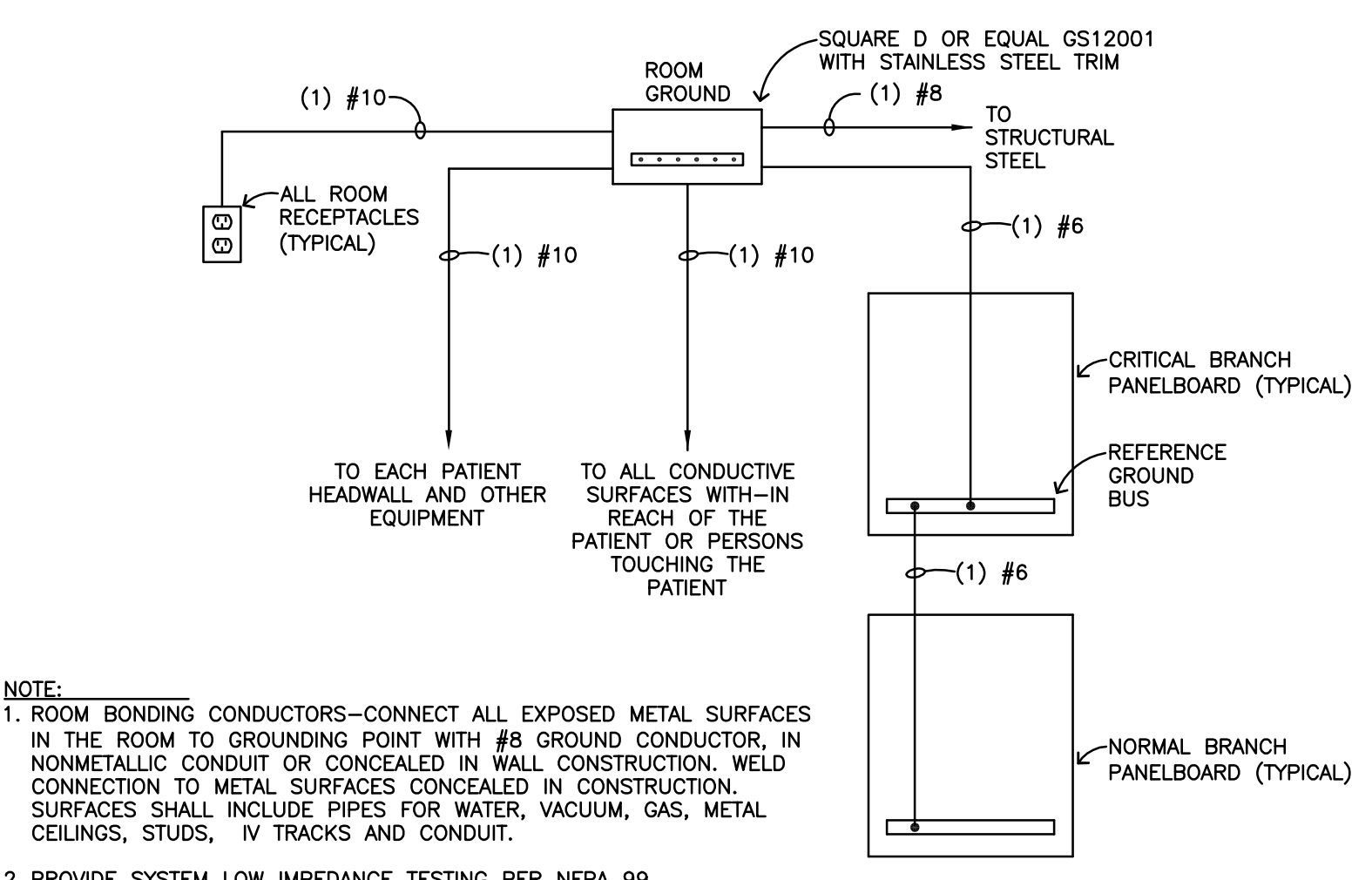
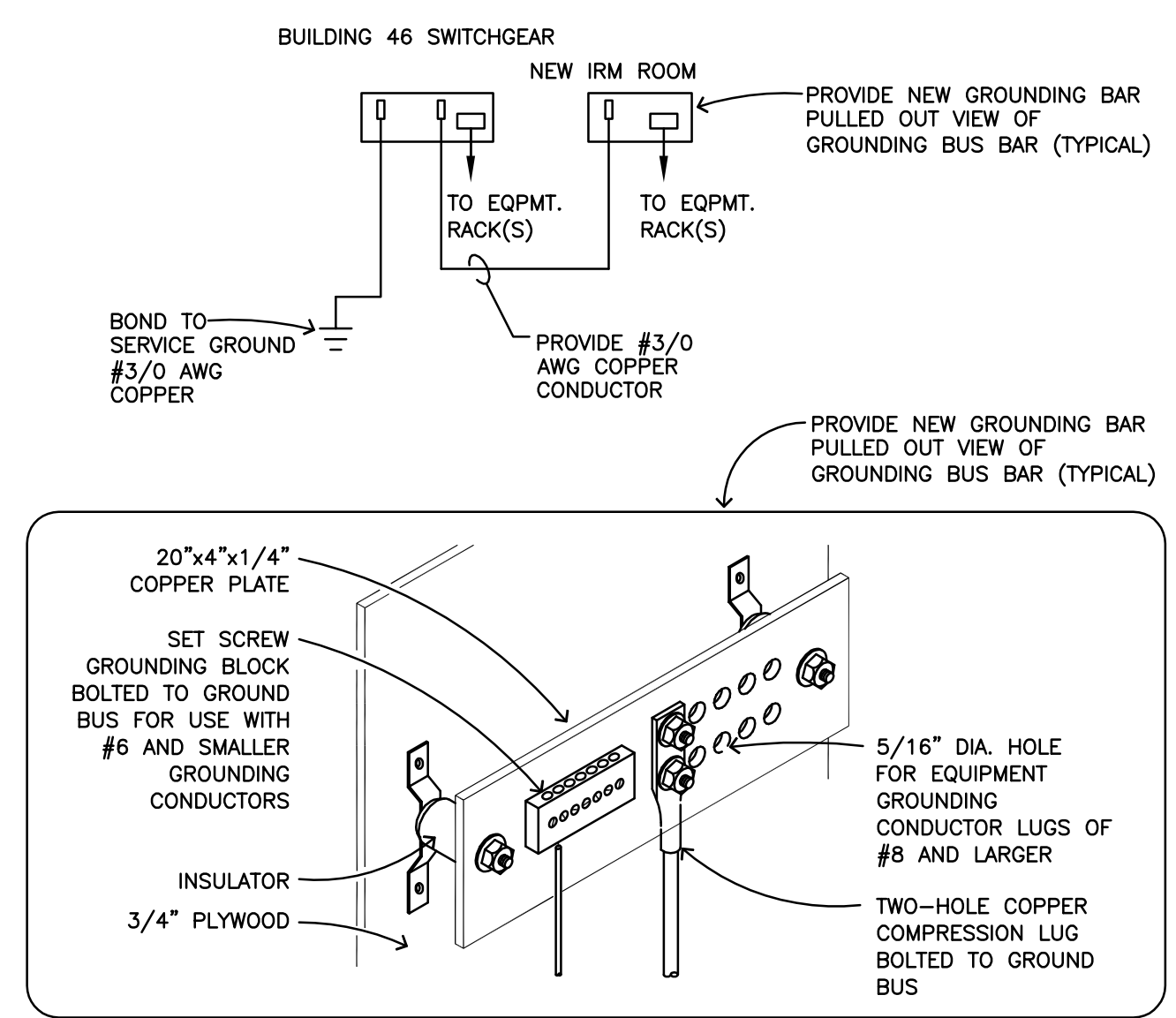


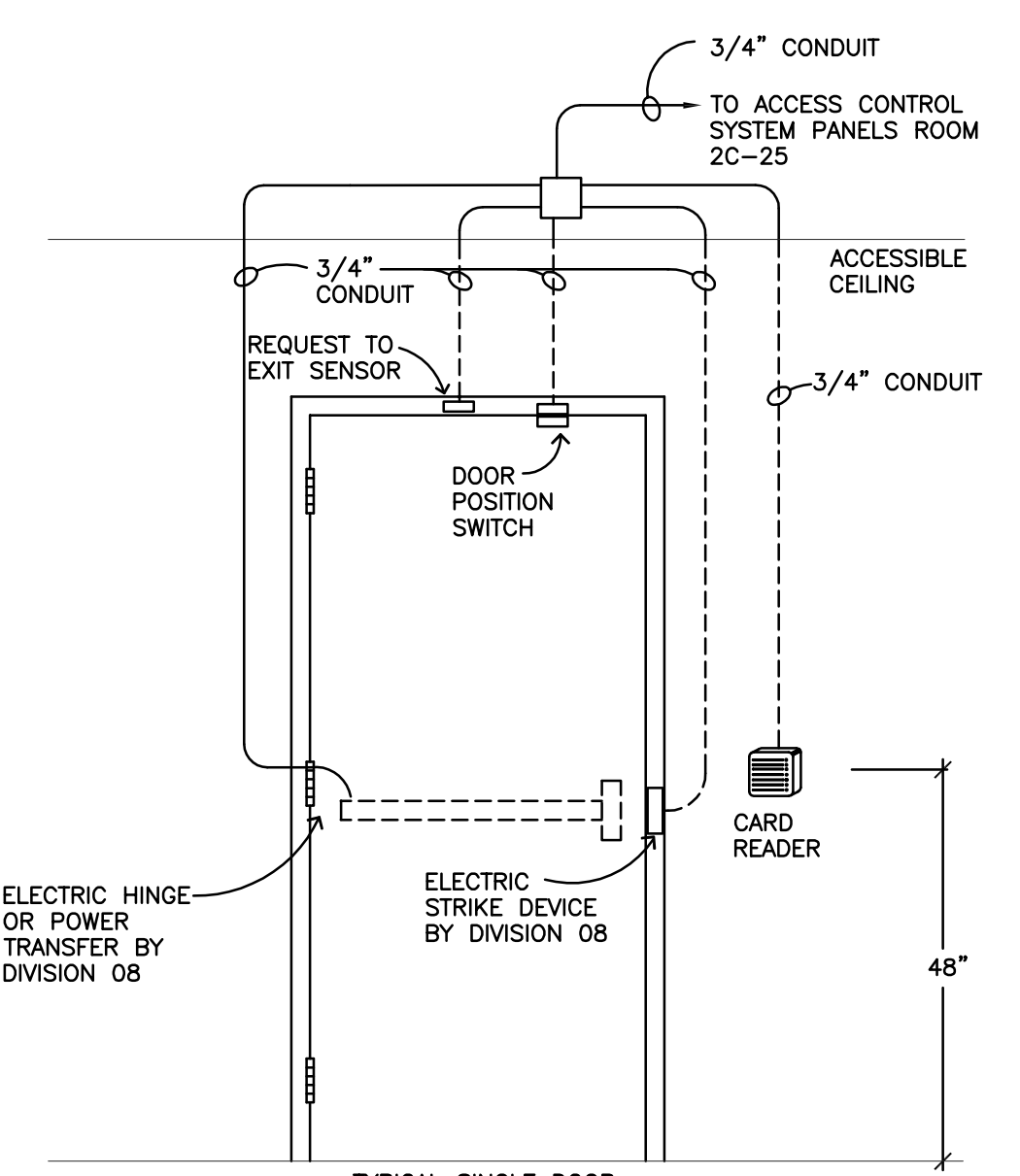
**1 DATA RISER DIAGRAM**  
E8 NO SCALE



**2 PATIENT ROOM EQUIPMENT GROUNDING DETAIL**  
E8 NO SCALE

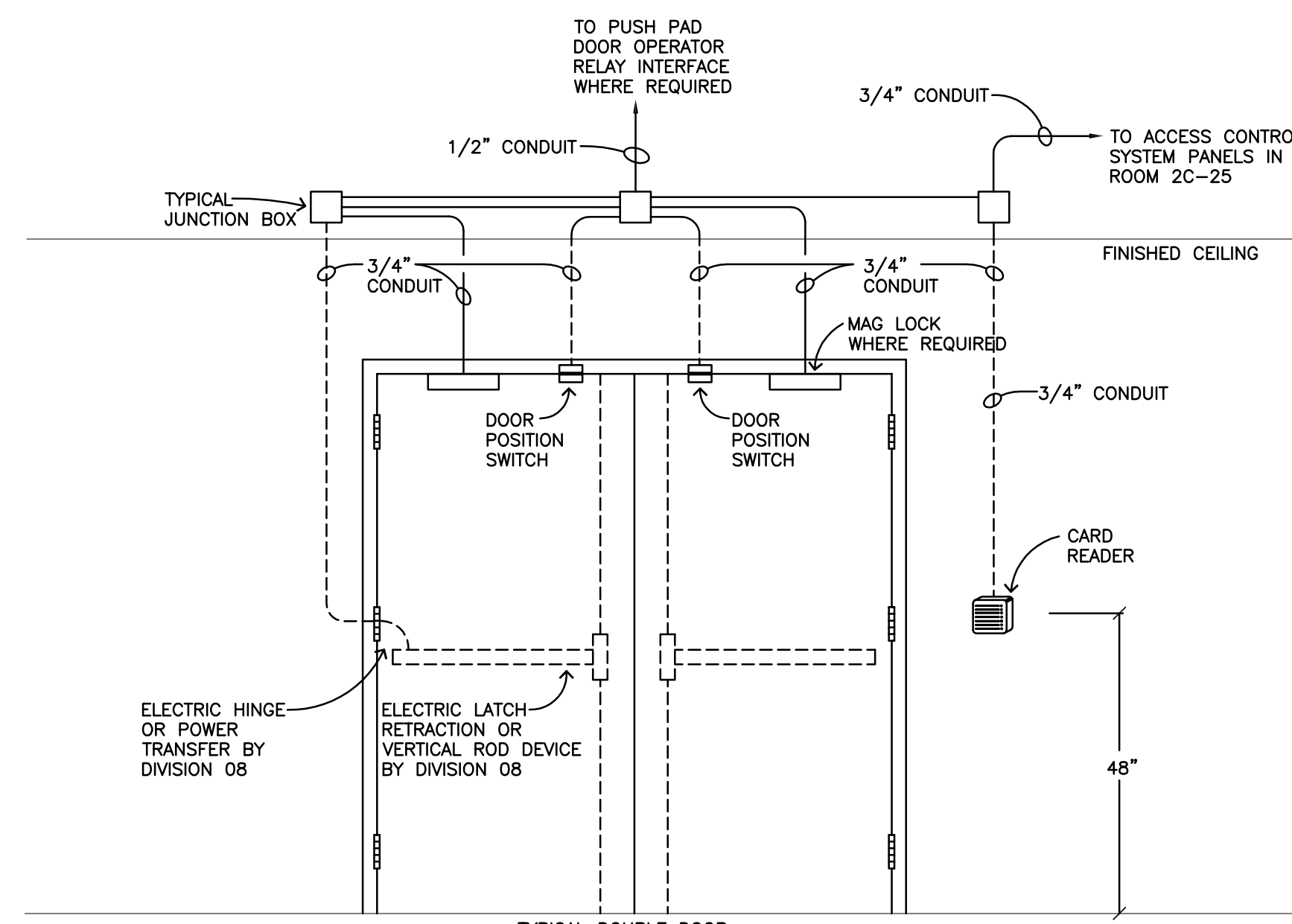


**3 GROUNDING RISER DETAIL**  
E8 NO SCALE



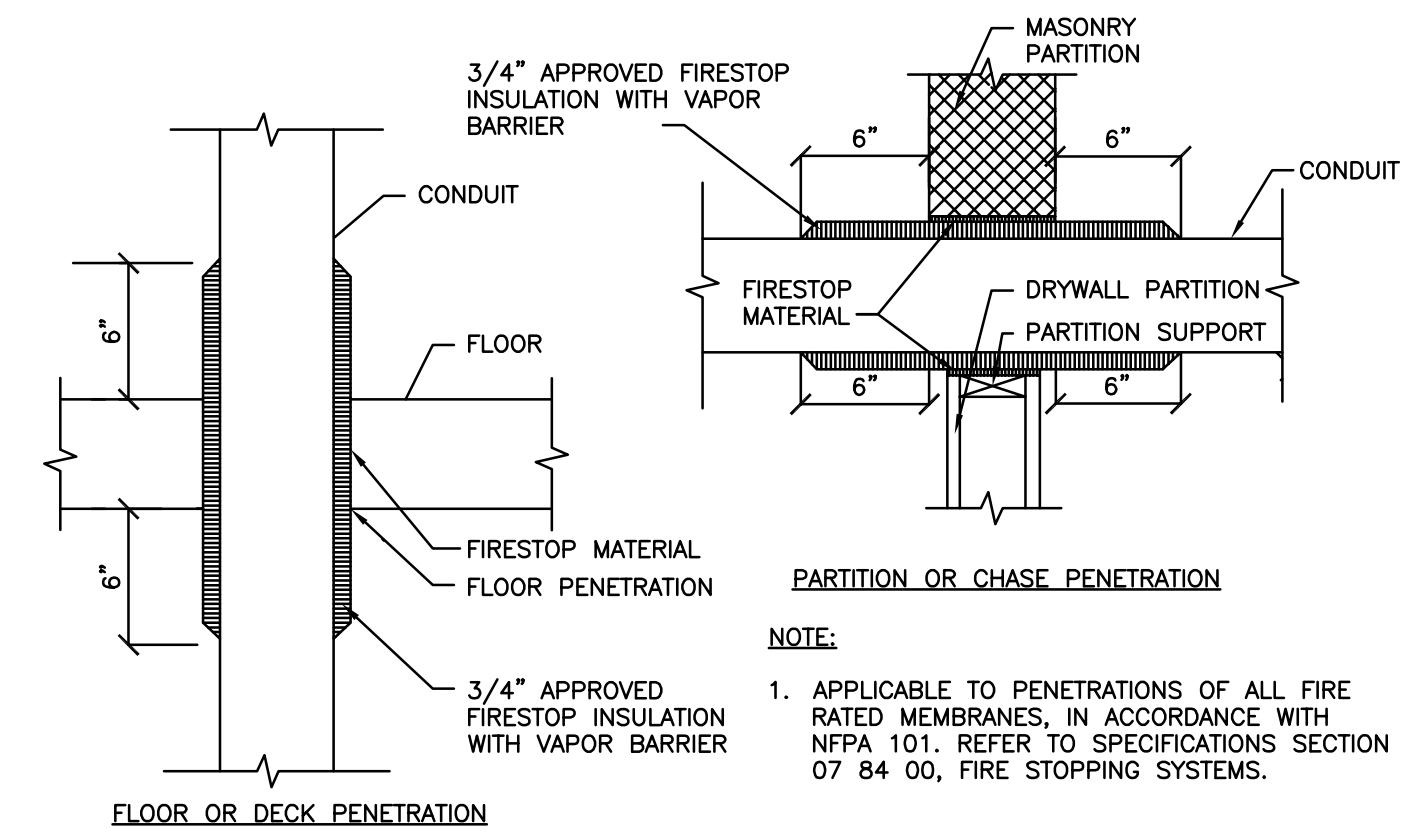
**NOTES:**  
1. ALL CONDUIT TO BE CONCEALED.  
2. THIS DETAIL IS A TYPICAL INSTALLATION, COORDINATE EXACT WIRING AND DOOR HARDWARE REQUIREMENTS WITH DIVISION 08 AND ACCESS CONTROL SYSTEM SUPPLIER.  
3. THE CARD READER SHALL BE CONFIGURED TO ACTIVATE THE DOOR OPERATOR ON THE ASSOCIATED SET OF DOORS.  
4. DOOR HARDWARE POWER SUPPLIES SHALL BE CENTRALLY LOCATED IN ELECTRICAL ROOM 2C-25, SEE POWER DRAWINGS FOR CIRCUIT REQUIREMENTS.

**4 TYPICAL CARD ACCESS WIRING**  
E8 NO SCALE

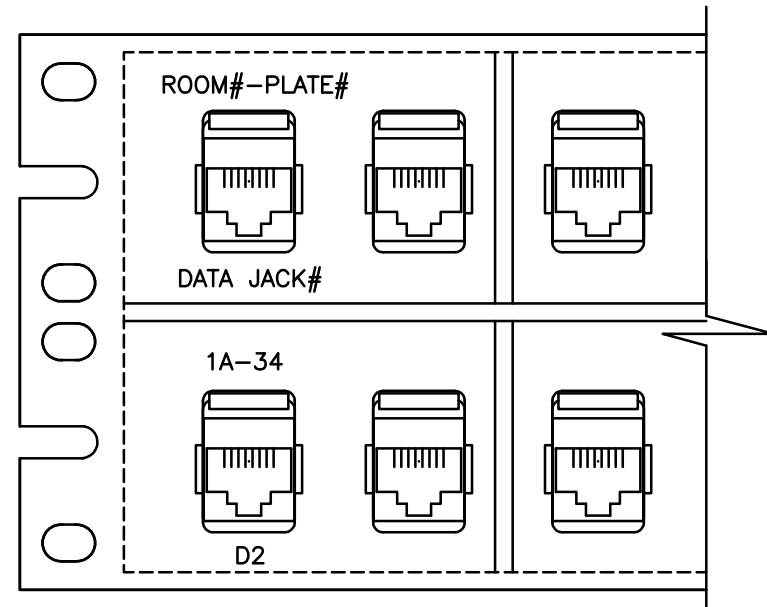


**NOTES:**  
1. ALL CONDUIT TO BE CONCEALED.  
2. THIS DETAIL IS A TYPICAL INSTALLATION, COORDINATE EXACT WIRING AND DOOR HARDWARE REQUIREMENTS WITH DIVISION 08 AND ACCESS CONTROL SYSTEM SUPPLIER.  
3. THE CARD READER SHALL BE CONFIGURED TO ACTIVATE THE DOOR OPERATOR ON THE ASSOCIATED SET OF DOORS.  
4. DOOR HARDWARE POWER SUPPLIES SHALL BE CENTRALLY LOCATED IN ELECTRICAL ROOM 2C-25, SEE POWER DRAWINGS FOR CIRCUIT REQUIREMENTS.

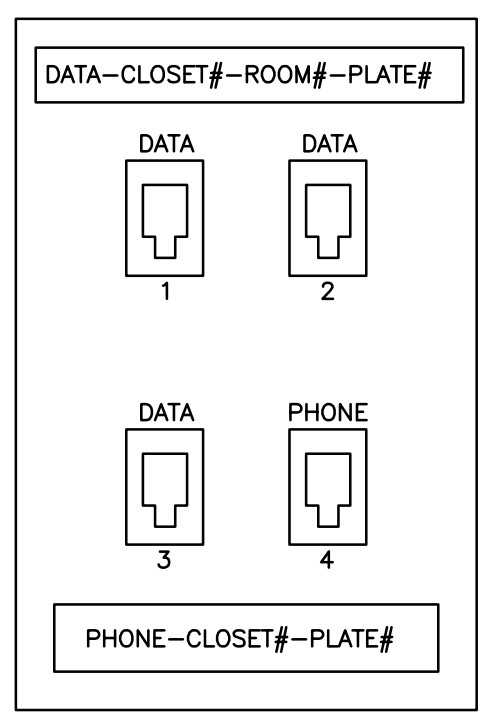
**5 MANUAL TRANSFER SWITCH ONE LINE**  
E8 NO SCALE



**6 CONDUIT PENETRATION OF SMOKE/FIRE BARRIERS**  
E8 NO SCALE

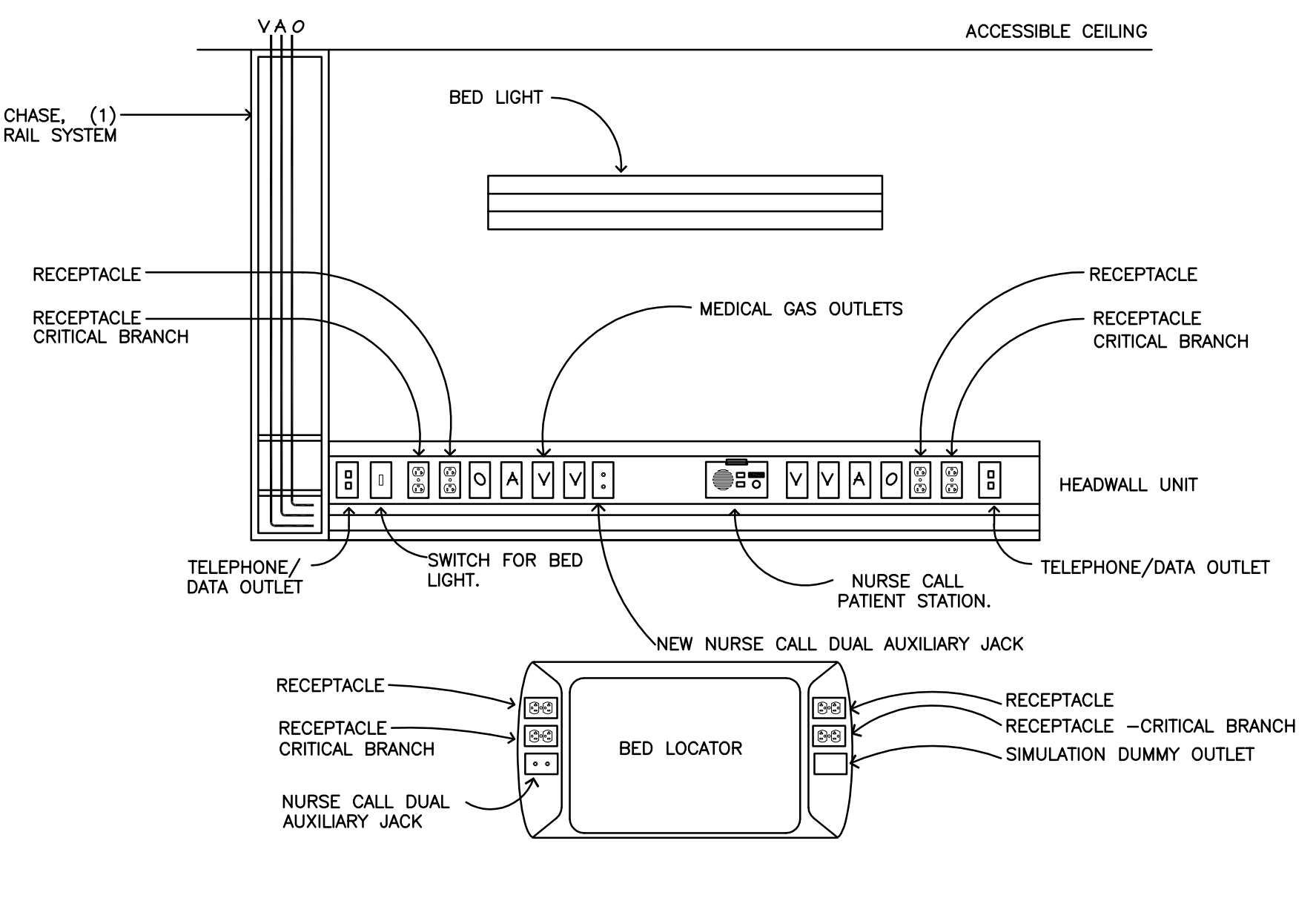


**7 PATCH PANEL SAMPLE LABELS**  
E8 NO SCALE



**8 TYPICAL COMMUNICATIONS DETAIL**  
E8 NO SCALE

**NOTES:**  
1. ( ) = (3) DATA, (1) PHONE JACK.  
2. SEE SECTION 27 10 05 FOR PLATE AND JACK REQUIREMENTS.  
3. DATA JACKS TO BE ORANGE COLOR, PHONE JACKS TO BE IVORY.  
4. PLATES ARE LABELED AS SHOWN, NUMBER PLATES ARE CLOCKWISE FROM THE DOOR.  
5. LABEL ALL VOICE AND DATA CABLES AT BOTH ENDS WITH "DATA CLOSET# - ROOM# - PLATE# - JACK#"  
6. ALL (4) JACKS TO BE CATEGORY 6e CABLES.  
7. DATA JACKS ARE NUMBERED LEFT TO RIGHT, TOP TO BOTTOM



**GENERAL NOTES:**  
1. HEAD WALL UNIT SHOWN IS TYPICAL, COORDINATE EXACT REQUIREMENTS FOR DEVICE INSTALLATION WITH EXISTING HEADWALL UNIT BEING RELOCATED TO THIS ROOM.  
2. PROVIDE BLANK PLATES FOR UNUSED OPENINGS THAT REMAIN AFTER INSTALLATION OF HEADWALL AND NEW DEVICES.

**9 TYPICAL HEADWALL DETAIL**  
E8 NO SCALE

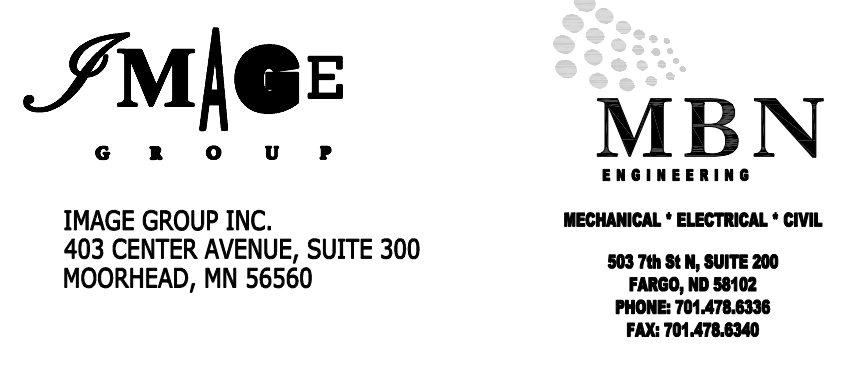
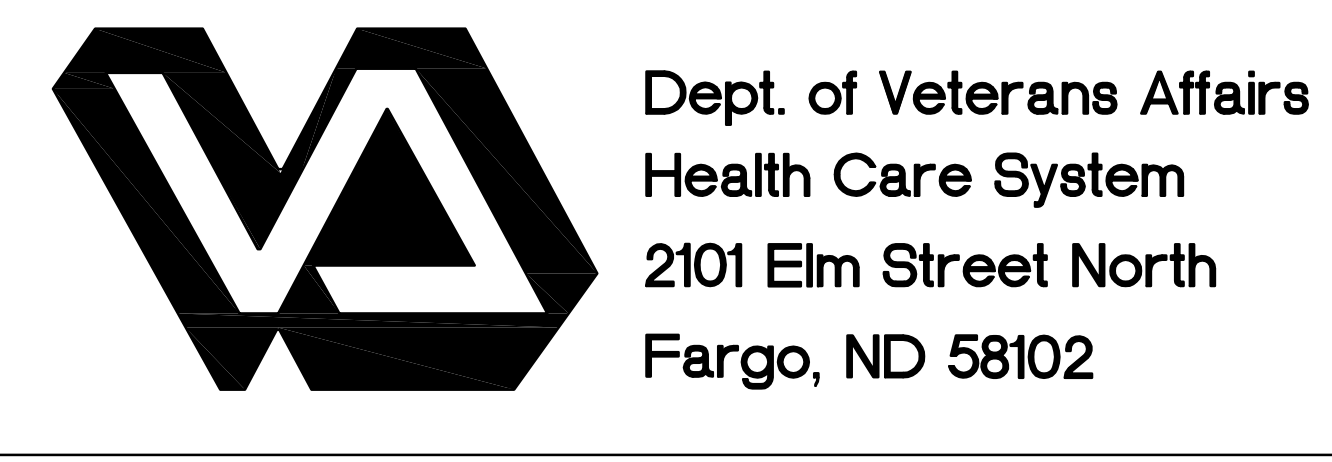


IMAGE GROUP INC., Architecture & Interiors  
OBERMILLER NELSON ENGINEERING, Mechanical Engineers  
MBN ENGINEERING, Electrical Engineers



<b>Drawing Title</b> ELECTRICAL DETAILS		<b>Project Title</b> RENOVATE 2ND FLOOR, BLDG 46 FOR MEDICAL SPECIALTIES		<b>Date</b> JULY 29, 2016
<b>VA Project No.</b> 437-14-110	<b>Contract No.</b> VA263-P-1217 VA263-C-	<b>Designed By</b> CH	<b>Checked By</b> MB	<b>Scale</b> AS NOTED
<b>Building No.</b> 46	<b>AutoCAD File Name</b> 14-256 E8.dwg	<b>Drawn By</b> CH	<b>Location</b> FARGO VA HEALTH CARE SYSTEM FARGO, ND	<b>Drawing No.</b> E8 Dwg. 38 of 38