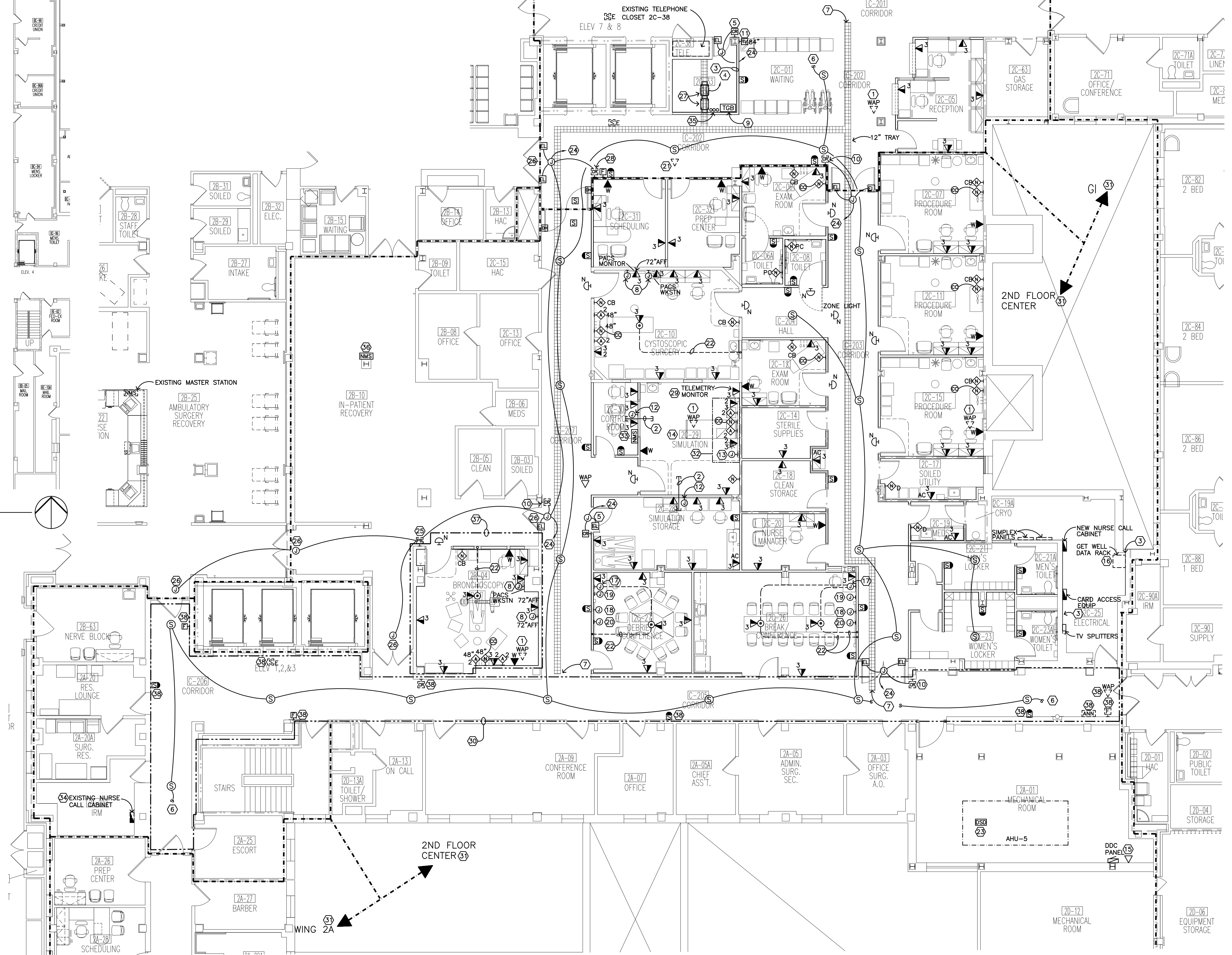


4 PARTIAL BASEMENT REFERENCE PLAN



1 SECOND FLOOR REMODELING PLAN - SYSTEMS

- GENERAL NOTES:
- ROUTE TELEVISION CABLING TO NEW ELECTRICAL ROOM 2C-25. PROVIDE SPLITTERS AND AMPLIFIERS AS NECESSARY AND CONNECT TO EXISTING TELEVISION DISTRIBUTION SYSTEM.
 - FLOORBOXES SHOWN ON THIS SHEET ARE SAME AS INDICATED ON POWER SHEETS. PROVIDE DEVICES FOR TERMINATION WITHIN BOX OR FURNITURE WHIPS AS REQUIRED.
 - TERMINATE NEW TELEPHONE CABLING IN EXISTING TELEPHONE CLOSET 2C-38. TERMINATE NEW DATA CABLING IN IRM 2C-33.

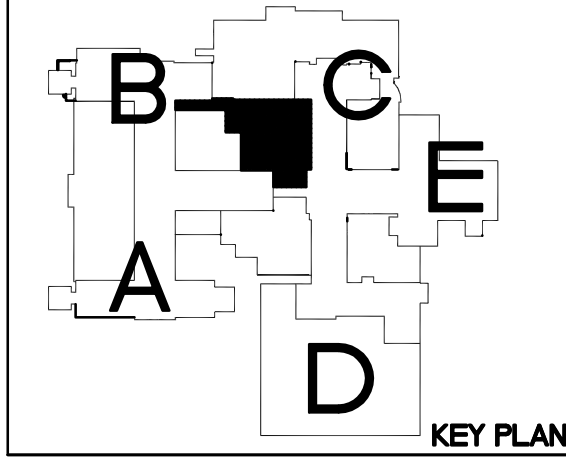
- PLAN NOTES:
- REINSTALL SALVAGED VA EMPLOYEE WIRELESS ACCESS POINT
 - PROVIDE (2) 2" CONDUITS THROUGH WALL IN ACCESSIBLE CEILING SPACE FOR TRAINING ROOM FOR OWNER PROVIDED TRAINING SYSTEM AUDIO/VISUAL CABLING.
 - 3/4" PLYWOOD FROM FLOOR TO 8" AFF ON ALL WALLS IN NEW IRM ROOM. PAINT WITH TWO COATS GRAY FIRE RETARDANT PAINT. DO NOT COVER PLYWOOD FIRE RATING LABEL.
 - SEE DETAIL 1/EB FOR TELECOMMUNICATIONS BACKBONE CABLING REQUIREMENTS.
 - PROVIDE CARD ACCESS AND DOOR SECURITY EQUIPMENT AND CONNECTIONS. SEE DETAIL 4/EB.
 - TO EXISTING CORRIDOR PAGING SPEAKER CIRCUIT.
 - CONNECT NEW TRAY TO EXISTING CABLE TRAY IN CORRIDOR. FIELD COORDINATE WITH EXISTING TRAY LAYOUT.
 - PROVIDE 4" SQUARE BOX WITH TWO GANG RING AND (1) 1" CONDUIT STUBBED TO ACCESSIBLE CEILING SPACE FOR OWNER PROVIDED MONITOR CABLING.
 - TELCOM GROUNDING BUSBAR. SEE DETAIL 3/EB.
 - INSTALL SALVAGED CARD READER AND CONNECT TO NEW ELECTRIC DOOR HARDWARE. SEE DETAIL 4/EB.
 - PROVIDE ROUGH IN AND R66 CABLING FOR WALL MOUNTED TELEVISION. PROVIDE 4" SQUARE BOX WITH SINGLE GANG RING WITH 3/4" INCH CONDUIT STUBBED TO ACCESSIBLE CEILING SPACE. MOUNT BOX ADJACENT TO WALL BRACKET.
 - PROVIDE 8"x8" J-BOX AT 18" AFF WITH (2) 2" CONDUITS STUBBED TO ACCESSIBLE CEILING SPACE FOR TRAINING MANNEQUIN SYSTEM CABLING. VIDEO CAMERA CABLING AND AUDIO CABLING. EQUIPMENT AND CABLING IS OWNER PROVIDED.
 - STUB EMPTY 1 1/4" INCH CONDUIT FROM BED LOCATOR TO ACCESSIBLE CEILING SPACE IN ROOM 2C-30 FOR OWNER PROVIDED TRAINING MANNEQUIN SYSTEM CABLING. SEE DETAIL 9/EB.
 - THE SIMULATION NURSE CALL DEVICES SHALL OPERATE AS A STAND ALONE SYSTEM AND SHALL ONLY ANNUNCIATE AT THE MASTER STATION IN THE SIMULATION ROOM.
 - PROVIDE DATA CONNECTION FOR DDC PANEL. COORDINATE EXACT LOCATION WITH MECHANICAL CONTRACTOR.
 - RELOCATED 'GET WELL NETWORK' DATA RACK.
 - PROVIDE 8 X 8 AV JUNCTION BOX WITH (2) 2" CONDUITS TO ACCESSIBLE CEILING SPACE AND (1) 2" CONDUIT TO FLOOR BOX(S) IN ROOM FOR OWNER FURNISHED AV CABLING.
 - PROVIDE ROUGH IN FOR OWNER FURNISHED SMARTBOARD. PROVIDE 1" CONDUIT TO AV J-BOX LOCATION AT COMPUTER CART.
 - PROVIDE 4" SQUARE J-BOX WITH TWO GANG RING AND 1" CONDUIT TO AV JUNCTION BOX FOR OWNER FURNISHED WALL MOUNTED MONITOR. COORDINATE EXACT MOUNTING HEIGHT WITH ARCHITECTURAL ELEVATIONS.
 - PROVIDE SINGLE GANG LOW VOLTAGE CUT-IN RING WITH 2" CONDUIT TO ACCESSIBLE CEILING SPACE FOR OWNER PROVIDED SHORT THROW PROJECTOR CABLING. COORDINATE EXACT MOUNTING HEIGHT WITH ARCHITECTURAL ELEVATIONS.
 - REINSTALL SALVAGED TELEMETRY ANTENNA IN NEW CEILING GRID.
 - PROVIDE (2) 1" CONDUITS TO FLOORBOX FOR DATA CABLING. ROUTE IN 1ST FLOOR CEILING SPACE BELOW AND STUB UP TO 2ND FLOOR ACCESSIBLE CEILING.
 - PROVIDE NEW DUCT SMOKE DETECTOR AND ASSOCIATED CONNECTIONS TO SHUT DOWN FAN UPON ALARM. FIELD COORDINATE EXACT MOUNTING LOCATION IN DUCTWORK SYSTEM.
 - TO CARD ACCESS CONTROL PANELS.
 - REINSTALL SALVAGED DOOR RELEASE PUSHBUTTON. RECONNECT TO DOORS NOTED FOR CONTROL OF ELECTRIC DOOR HARDWARE FROM RELEASE BUTTON. SEE PLAN NOTE #26 FOR DOOR LOCATIONS.
 - CONNECT ELECTRIC DOOR HARDWARE TO DOOR RELEASE PUSHBUTTON. SEE PLAN NOTE #25.
 - NEW DATA RACKS. SEE SECTION 27 10 05.
 - REINSTALL SALVAGED CARD READER. CONNECT TO ADJACENT POWERED DOOR SO VALID CREDENTIAL AUTOMATICALLY UNLOCKS DOOR AND ACTIVATES MOTORIZED DOOR OPERATOR.
 - INSTALL DATA JACK ADJACENT TO MONITOR MOUNTING BRACKET.
 - OMIT WORK WITHIN BOUNDARY UNDER CORRIDOR DUCT. ALTERNATE BID UNLESS OTHERWISE NOTED.
 - FIRE ALARM SYSTEM SHALL BE REZONED AS SHOWN. CONFIGURE VOICE ANNOUNCEMENTS AND REVISE ZONING OF DEVICES AS REQUIRED.
 - INSTALL DEVICES IN OWNER PROVIDED HEADWALL AND BED LOCATOR UNITS. SEE DETAIL 9/EB FOR TYPICAL REQUIREMENTS.
 - NURSE CALL MASTER STATION IN THIS ROOM SHALL RECEIVE SIGNALS FROM SIMULATION ROOM 2C-29 FOR STAFF TRAINING ONLY.
 - EXISTING NURSE CALL HEAD END TO BE EXPANDED AS REQUIRED FOR NEW DEVICES SHOWN. SEE SECTION 27 52 23 FOR EQUIPMENT REQUIREMENTS.
 - PROVIDE (3) 4" SLEEVES TO CEILING SPACE BELOW.
 - ADD MASTER STATION AT EXISTING NURSE DESK.
 - OMIT WORK WITHIN BOUNDARY UNDER BRONCHOSCOPY ROOM DUCT. ALTERNATE BID.
 - EXISTING DEVICE TO BE REINSTALLED IN SAME LOCATION AFTER COMPLETION OF NEW FINISHES IN CORRIDOR. SEE ALSO PLAN NOTE #30.

Dept. of Veterans Affairs
Health Care System
 2101 Elm Street North
 Fargo, ND 58102

IMAGE GROUP INC.
 403 CENTER AVENUE, SUITE 300
 MOORHEAD, MN 56560

MBN ENGINEERS
 MECHANICAL • ELECTRICAL • CIVIL
 503 7th St. N., Suite 200
 Fargo, ND 58102
 PHONE: 701.478.6200
 FAX: 701.478.6240

IMAGE GROUP INC., Architecture & Interiors
 OBERMILLER NELSON ENGINEERING, Mechanical Engineers
 MBN ENGINEERING, Electrical Engineers



Drawing Title
BASEMENT, FIRST, SECOND AND THIRD FLOOR REMODELING PLANS - SYSTEMS

VA Project No.
437-14-110

Contract No.
VA263-P-1217
VA263-C-

Building No.
46

AutoCAD File Name
14-256 E5.dwg

Project Title
RENOVATE 2ND FLOOR, BLDG 46 FOR MEDICAL SPECIALTIES

Designed By
CH

Checked By
MB

Drawn By
CH

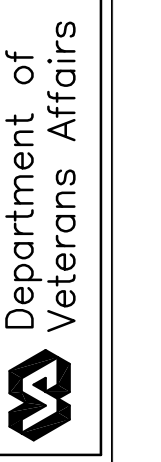
Location
FARGO VA HEALTH CARE SYSTEM FARGO, ND

Date
JULY 29, 2016

Scale
AS NOTED

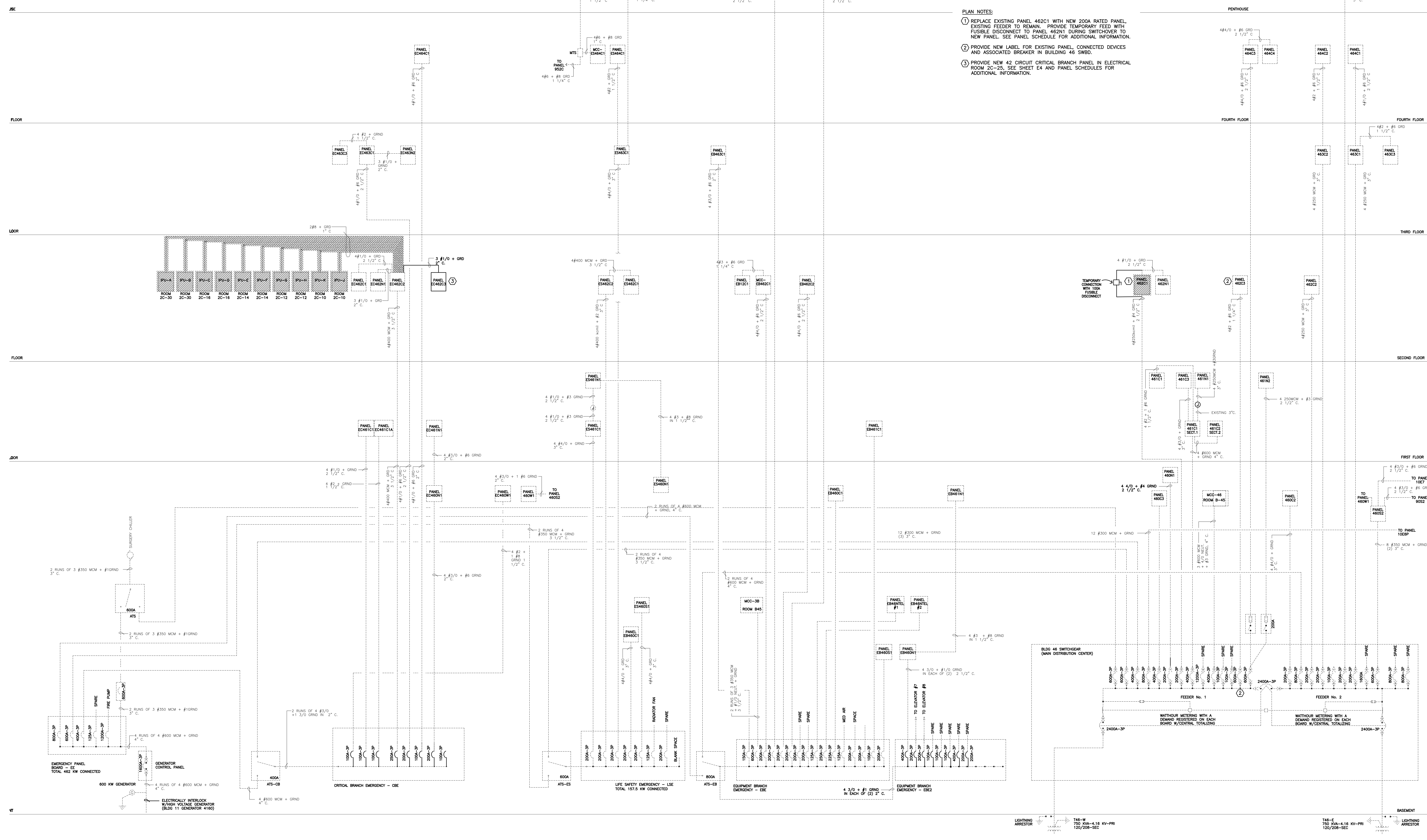
Drawing No.
E5

Dwg. 33 of 36



4/Project/2016/14-256/Drawn/14-256 E5.dwg Nov 29, 2016 - 8:10am

- GENERAL PROJECT NOTES:**
1. ALL WORK SHALL BE SCHEDULED WITH THE VA PROJECT ENGINEER IN ADVANCE. NO WORK MAY COMMENCE WITHOUT PERMISSION FROM THE VA PROJECT ENGINEER.
 2. ALL WORK SHALL BE PHASED TO CREATE MINIMAL ELECTRICAL SERVICE DISRUPTION TO DAILY OPERATIONS OF THE HOSPITAL. SWITCH OVERS WILL REQUIRE ADVANCE NOTICE AND OUTAGES WILL NEED TO OCCUR OUTSIDE NORMAL WORKING HOURS.
 3. PHASING FOR ELECTRICAL OUTAGES TO BE COORDINATED AT LEAST 2 WEEKS IN ADVANCE WITH THE VA PROJECT ENGINEER AND DOWN TIME SHALL BE MINIMIZED. TEMPORARY CONNECTIONS WILL BE REQUIRED FOR CRITICAL PIECES OF EQUIPMENT. SEE SPECIFICATION SECTION 26 05 12.
- PLAN NOTES:**
- ① REPLACE EXISTING PANEL 462C1 WITH NEW 200A RATED PANEL. EXISTING FEEDER TO REMAIN. PROVIDE TEMPORARY FEED WITH FUSIBLE DISCONNECT TO PANEL 462N1 DURING SWITCHOVER TO NEW PANEL. SEE PANEL SCHEDULE FOR ADDITIONAL INFORMATION.
 - ② PROVIDE NEW LABEL FOR EXISTING PANEL, CONNECTED DEVICES AND ASSOCIATED BREAKER IN BUILDING 46 SWBD.
 - ③ PROVIDE NEW 42 CIRCUIT CRITICAL BRANCH PANEL IN ELECTRICAL ROOM 2C-25. SEE SHEET E4 AND PANEL SCHEDULES FOR ADDITIONAL INFORMATION.



1
E6 BUILDING 46 ELECTRICAL ONE-LINE DIAGRAM REVISIONS
NO SCALE

4/29/2016 14-256 (Dwg) 14-256 E6.dwg Rev 29, 2016 - 8:10am

Revisions	Date



Dept. of Veterans Affairs
Health Care System
2101 Elm Street North
Fargo, ND 58102

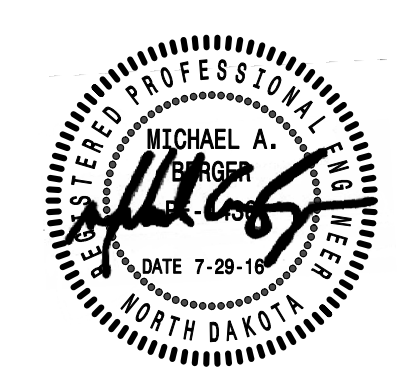


IMAGE GROUP INC.
403 CENTER AVENUE, SUITE 300
MOORHEAD, MN 56560



MECHANICAL * ELECTRICAL * CIVIL
903 7th St N, Suite 200
FARGO, ND 58103
PHONE: 701-774-8300
FAX: 701-774-8340

IMAGE GROUP INC., Architecture & Interiors
OBERMILLER NELSON ENGINEERING, Mechanical Engineers
MBN ENGINEERING, Electrical Engineers



Drawing Title BUILDING 46 ELECTRICAL ONE-LINE DIAGRAM REVISIONS		Project Title RENOVATE 2ND FLOOR, BLDG 46 FOR MEDICAL SPECIALTIES		Date JULY 29, 2016
VA Project No. 437-14-110	Contract No. VA263-P-1217 VA263-C-	Designed By CH	Checked By MB	Scale AS NOTED
Building No. 46	AutoCAD File Name 14-256 E6.dwg	Drawn By CH	Location FARGO VA HEALTH CARE SYSTEM FARGO, ND	Drawing No. E6
				Dwg. 34 of 36

