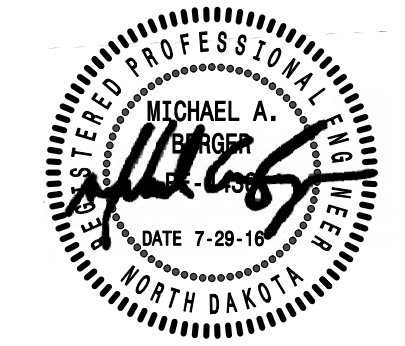
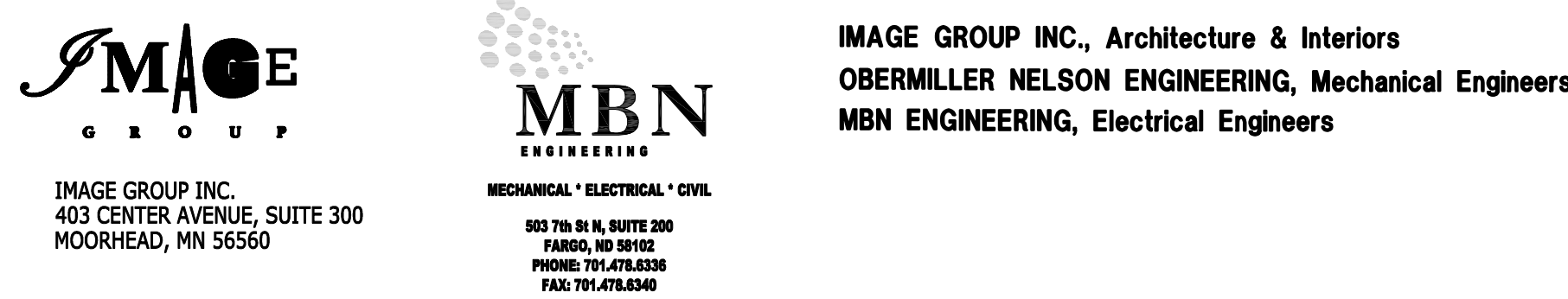


ELECTRICAL SYMBOLS LEGEND

LIGHTING			POWER			SYSTEMS			FIRE ALARM			MISC/ABBREVIATIONS		
SYMBOLS	DESCRIPTION	MOUNTING HEIGHT	SYMBOLS	DESCRIPTION	MOUNTING HEIGHT	SYMBOLS	DESCRIPTION	MOUNTING HEIGHT	SYMBOLS	DESCRIPTION	MOUNTING HEIGHT	SYMBOLS	DESCRIPTION	MOUNTING HEIGHT
A	CEILING SURFACE MOUNTED LIGHT FIXTURE, CAPITAL LETTER INDICATES FIXTURE TYPE, SMALL LETTER INDICATES SWITCHING.		⊖	DUPLEX RECEPTACLE ("C" INDICATES EMERGENCY CRITICAL BRANCH POWER)	18 INCHES	⊖	CEILING MOUNTED RECESSED SPEAKER		H[F]	MANUAL STATION	48 INCHES	⊖	CEILING-MOUNTED JUNCTION BOX	
⊖	RECESSED CEILING MOUNTED LIGHT FIXTURE		A	DOUBLE DUPLEX RECEPTACLE ("C" INDICATES EMERGENCY CRITICAL BRANCH POWER)	18 INCHES	⊖	CEILING SURFACE MOUNTED SPEAKER		⊖	DUCT PHOTOELECTRIC DETECTOR		⊖	WALL JUNCTION BOX	18 INCHES
⊖	WALL MOUNTED INCAND. OR H.I.D. LIGHT FIXTURE, SURFACE OR, RECESSED MOUNTED		A	TYPE L14-30 RECEPTACLE	18 INCHES	⊖	WALL MOUNTED SPEAKER	90 INCHES	⊖	PHOTOELECTRIC DETECTOR ("S" INDICATES SLEEPING ROOM WITH AUX. CONTACT, "G" INDICATES WITH GUARD, "E" INDICATES FOR ELEVATOR RECALL)		⊖	DASHED LINES INDICATE EXISTING FIXTURES, DEVICES, OR EQUIPMENT	
⊖	CEILING EXIT SIGN, SHADED SIDE INDICATES LIGHTED FACE, ARROWS INSTALLED AS SHOWN		B	TYPE L14-50 RECEPTACLE	18 INCHES	⊖	MICROPHONE OUTLET	18 INCHES	⊖	SPEAKER HORN WITH STROBE		⊖	HASH MARKS INDICATE ITEM NOTED TO BE REMOVED	
⊖	WALL EXIT SIGN	6 INCHES ABOVE DOOR FRAME TO BOTTOM	G	GFCI TYPE RECEPTACLE	18 INCHES	⊖	MICROPHONE FLOOR OUTLET	48 INCHES	⊖	STROBE LIGHT		⊖	CONDUIT CONCEALED IN WALL OR CEILING, QUANTITY OF CONDUCTORS NOT SHOWN, PROVIDE AS REQUIRED FOR DEVICE/CIRCUIT NUMBERS SHOWN.	
⊖	SUSPENDED FIXTURE		⊖	MULTI-OUTLET ASSEMBLY - M.O.A., PROVIDE DEVICES AS SHOWN ON PLANS	18 INCHES	⊖	VOLUME CONTROL	48 INCHES	⊖	FIRE ALARM SPEAKER		⊖	CONDUIT CONCEALED IN FLOOR	
⊖	SURFACE FLUORESCENT		⊖	DUPLEX RECEPTACLE, HALF SWITCHED	18 INCHES	⊖	COMPUTER OUTLET (NUMBER INDICATES QUANTITY OF CABLES AND JACKS, NO NUMBER INDICATES ONE)	18 INCHES	⊖	FIRE ALARM MODULE/RELAY		⊖	UNDERGROUND ELECTRICAL CONDUIT AT 24 INCHES MINIMUM	
⊖	RECESSED FLUORESCENT		⊖	FLOOR OUTLET, "R" INDICATES RECESSED, "F" INDICATES FLUSH, "S" INDICATES SURFACE MOUNT	18 INCHES	⊖	COMBINATION COMPUTER/TELEPHONE OUTLET IN SINGLE GANG OPENING (NUMBER INDICATES QUANTITY OF CABLES AND JACKS, NO NUMBER INDICATES ONE)	18 INCHES	⊖	MAGNETIC DOOR HOLD OPEN		⊖	UNDERGROUND TELECOMMUNICATIONS CONDUIT AT 24 INCHES MINIMUM	
⊖	FIXTURE CONNECTED TO EMERGENCY LIFE SAFETY POWER		⊖	TIME SWITCH	48 INCHES	⊖	TELEPHONE OUTLET ("W" INDICATES WALL MOUNTED AT 48 INCHES)	18 INCHES	⊖	TAMPER (SUPERVISORY) SWITCH (NUMBER INDICATES NUMBER OF DEVICES AT THIS LOCATION)		⊖	HOME RUN TO PANELBOARD, QUANTITY OF CONDUCTORS REQUIRED NOT INDICATED, PROVIDE QUANTITY AS REQUIRED FOR CIRCUIT NUMBERS SHOWN, SWITCHING ARRANGEMENT, OR NUMBER OF HOME RUNS SHOWN. #10 INDICATES WIRE SIZE, NO NUMBERS INDICATES #12, 3/4 INCH CONDUIT MINIMUM.	
⊖	FIXTURE CONNECTED TO EMERGENCY CRITICAL BRANCH POWER		⊖	DRY TYPE TRANSFORMER	42 INCHES	⊖	WIRELESS ACCESS POINT	18 INCHES	⊖	PRESSURE SWITCH		⊖	ONE HOUR FIRE BARRIER	
⊖	TRACK MOUNTED MEDICAL FIXTURE		⊖	PUSH BUTTON DOOR OPERATOR	42 INCHES	⊖	RTLS WIRELESS ACCESS POINT	18 INCHES	⊖	FLOW SWITCH		⊖	TWO HOUR FIRE BARRIER	
⊖	EMERGENCY BATTERY LIGHT	7 FOOT 6 INCHES	⊖	POWER DOOR HANDICAP PUSH PAD	42 INCHES	⊖	RTLS TRACKING VIRTUAL WALL	48 INCHES	⊖	FIRE ALARM CONTROL PANEL		⊖	ONE HOUR FIRE/SMOKE BARRIER	
⊖	EMERGENCY REMOTE LAMP	7 FOOT 6 INCHES	⊖	EMERGENCY BOILER SHUTDOWN PUSH BUTTON	48 INCHES	⊖	RTLS TRACKING MONITOR DEVICE	48 INCHES	⊖	FIRE ALARM ANNUNCIATOR		⊖	TWO HOUR FIRE/SMOKE BARRIER	
⊖	PHOTO CELL	9 FOOT	⊖	THERMOSTAT - PROVIDE BY DIVISION 26	48 INCHES	⊖	RTLS TRACKING - WALL MOUNT LF EXCITER	48 INCHES	⊖	NURSE CALL		⊖	NOTE IDENTIFICATION	
⊖	LINE VOLTAGE CEILING MOUNTED MOTION SENSOR SWITCH		⊖	THERMOSTAT - FURNISHED BY DIVISION 23, INSTALLED BY DIVISION 26	48 INCHES	⊖	FLOOR MOUNTED COMMUNICATIONS OUTLET	48 INCHES	⊖	MASTER STATION	DESKTOP	⊖	WIRE BASKET TYPE CABLE TRAY	
⊖	LOW VOLTAGE CEILING MOUNTED MOTION SENSOR SWITCH	84 INCHES	⊖	THERMAL SWITCH (MOTOR OVERLOAD TYPE)	48 INCHES	⊖	TELEVISION OUTLET	48 INCHES	⊖	NURSE CALL DOME LIGHT		⊖	AMPERE	
⊖	MOTION SENSOR SWITCH POWER PACK		⊖	POWER POLE		⊖	REQUEST TO EXIT DEVICE	48 INCHES	⊖	NURSE CALL DOME LIGHT - WALL MOUNTED		⊖	AC	
⊖	WALL MOUNTED MOTION SENSOR SWITCH		⊖	MOTOR (NUMBER REFERS TO MOTOR AND EQUIPMENT SCHEDULE SEE SCHEDULE FOR WIRING AND CONTROLLER REQUIREMENTS)		⊖	DOOR POSITION SWITCH, RECESSED	48 INCHES	⊖	NURSE CALL EMERGENCY PULL CORD STATION WITH CALL BUTTON AND TWO WAY AUDIO	48 INCHES	⊖	AHU	
⊖	CONTACTOR (NUMBER INDICATES NUMBER OF POLES)		⊖	SURFACE LIGHTING AND APPLIANCE PANELBOARD		⊖	DOOR POSITION SWITCH, SURFACE MOUNT	48 INCHES	⊖	NURSE CALL EMERGENCY STATION	48 INCHES	⊖	C	
⊖	SINGLE POLE (HORSEPOWER RATED WHEN USED AS MOTOR DISCONNECT)	48 INCHES	⊖	EXISTING SURFACE LIGHTING AND APPLIANCE PANELBOARD		⊖	CARD READER	48 INCHES	⊖	NURSE CALL DUTY STATION	48 INCHES	⊖	CONDUIT	
⊖	DOUBLE POLE	48 INCHES	⊖	RECESSED LIGHTING AND APPLIANCE PANELBOARD		⊖	CARD READER WITH INTEGRAL KEYPAD	48 INCHES	⊖	NURSE CALL 4 BUTTON STAFF REGISTRATION STATION	48 INCHES	⊖	EF	
⊖	3-WAY	48 INCHES	⊖	SWITCHBOARD OR MOTOR CONTROL CENTER AS NOTED		⊖	ELECTRIC DOOR LOCK (BY DIVISION 08)	48 INCHES	⊖	NURSE CALL STAFF ASSIST STATION WITH TWO WAY AUDIO	48 INCHES	⊖	EWC	
⊖	4-WAY	48 INCHES	⊖	SPECIAL EQUIPMENT CABINET AS NOTED		⊖	DOOR BUZZER	48 INCHES	⊖	NURSE CALL -CALL STATION WITH TWO WAY AUDIO	48 INCHES	⊖	FA	
⊖	OCCUPANCY SENSOR SWITCH	48 INCHES	⊖	ENCLOSED MOLDED CASE CIRCUIT BREAKER		⊖	SURVEILLANCE CAMERA	48 INCHES	⊖	NURSE CALL -PATIENT STATION W/ PUSH BUTTON CORD	48 INCHES	⊖	GFCI	
⊖	KEY OPERATED	48 INCHES	⊖	VARIABLE FREQUENCY CONTROLLER WITH DISCONNECT		⊖	BLUE ALARM LIGHT		⊖	NURSE CALL CODE BLUE STATION	48 INCHES	⊖	GR	
⊖	WITH PILOT LIGHT (CAN BE USED WITH OTHER SWITCH TYPES)	48 INCHES	⊖	NON-FUSED DISCONNECT		⊖			⊖	NURSE CALL STAFF ASSIST, CODE BLUE WITH CANCEL FUNCTIONALITY	48 INCHES	⊖	PH	
⊖	FLUORESCENT DIMMER	48 INCHES	⊖	FUSED DISCONNECT		⊖			⊖	PILLOW SPEAKER, WITH CALL BUTTON, TWO WAY AUDIO, "T" INDICATES WITH TV CONTROL, "L" INDICATES WITH LIGHTING CONTROL.		⊖	TV	
⊖	DIMMER (600 WATT UNLESS OTHERWISE NOTED)	48 INCHES	⊖	MAGNETIC STARTER		⊖			⊖	NURSE CALL ZONE LIGHT	CLG	⊖	WP	
⊖	3-WAY DIMMER (600 WATT UNLESS OTHERWISE NOTED)	48 INCHES	⊖	COMBINATION STARTER-DISCONNECT		⊖			⊖	NURSE CALL CALL CORD	18 INCHES			
⊖	LOW VOLTAGE SWITCH	48 INCHES	⊖	JUNCTION BOX WITH BLANK COVER		⊖			⊖	NURSE CALL AUXILIARY JACK, NUMBER INDICATES QUANTITY OF JACKS				

NOTES:
 1. THIS IS A COMPREHENSIVE SYMBOL SCHEDULE. NOT ALL SYMBOLS ARE APPLICABLE TO THESE DRAWINGS.
 2. MOUNTING HEIGHT IS TO THE CENTER OF DEVICE UNLESS OTHERWISE INDICATED.
 3. FOR DEVICES SHOWN AS 48 INCHES MOUNTING HEIGHT, WHEN INSTALLED IN MASONRY BLOCK WALLS, MOUNTING AT 48 INCHES TO THE TOP OF THE OUTLET BOX IS ACCEPTABLE.

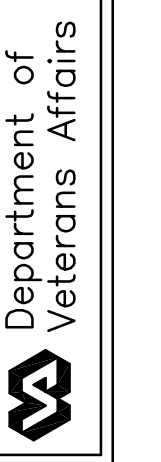
LUMINAIRE SCHEDULE											
TYPE	MANUFACTURERS	CATALOG INFORMATION	FIXTURE DESCRIPTION	LAMP DATA		BALLAST DATA		INPUT WATTS	VOLTAGE	MOUNTING	REMARKS
				NO.	TYPE	NO.	TYPE				
A1	METALUX OR EQUAL	2GR SERIES	2' X 4' RECESSED LED TROFFER, REGRESSED ALUMINUM DOOR FRAME HINGED AND LATCHED WITH 0.125 INCH THICK PATTERN #12 DIFFUSER. 3800 LUMENS, 1% DIMMING.		LED		0-10V DIMMING DRIVER	38	120	RECESSED	
A2	METALUX OR EQUAL	2GR SERIES	2' X 2' RECESSED LED TROFFER, REGRESSED ALUMINUM DOOR FRAME HINGED AND LATCHED WITH 0.125 INCH THICK PATTERN #12 DIFFUSER. 2400 LUMENS, 1% DIMMING.		LED		0-10V DIMMING DRIVER	24	120	RECESSED	
B1	COOPER OR EQUAL	ENCOUNTER LED SERIES	2' X 4' RECESSED LED TROFFER, EXTRUDED ALUMINUM HOUSING, VOLUMETRIC FIXTURE. 4000K CRI, 3400 LUMENS, 1% DIMMING.		LED		0-10V DIMMING DRIVER	35	120	RECESSED	
B2	COOPER OR EQUAL	ENCOUNTER LED SERIES	2' X 2' RECESSED LED TROFFER, EXTRUDED ALUMINUM HOUSING, VOLUMETRIC FIXTURE. 4000K CRI, 2500 LUMENS, 1% DIMMING.		LED		0-10V DIMMING DRIVER	25	120	RECESSED	
E1	LITHONIA OR EQUAL	LE SERIES	SOLID, DIE-CAST ALUMINUM HOUSING, WHITE ALUMINUM FACING WITH WHITE HOUSING, UNIVERSAL MOUNTING. AC ONLY.		LED			1.5	120	UNIVERSAL	
E2	LITHONIA OR EQUAL	LE SERIES	SAME AS 'E1', DUAL FACED.		LED			1.5	120	UNIVERSAL	
F1	LITHONIA OR EQUAL	VW SERIES	1' X 4' ROUGH SERVICE LINEAR FLUORESCENT WRAP AROUND FIXTURE. ONE PIECE COLD ROLLED STEEL HOUSING, WHITE POLYESTER POWDER COAT PAINT ON ALL METAL PARTS, CORROSION RESISTANT FINISH.	2	32W-T8	1	ELECTRONIC	58	120	SUSPENDED	
H1	PHILIPS OR EQUAL	H2N SERIES	4', (4) FUNCTION PATIENT LIGHT, EXTRUDED ALUMINUM HOUSING, DIE CAST ALUMINUM END CAPS, UPLIGHT AND DOWNLIGHT CONFIGURATION, POLYCARBONATE LENS. SOLID STATE LOW VOLTAGE CONTROLLER, LED NIGHTLIGHT.	1	LED	1	LED DRIVER	40	120	WALL	
M1	BOVIE MEDICAL OR EQUAL	MI 1000 SERIES	SINGLE POINT MOUNTED, STERILIZABLE AUTOCLAVABLE HANDLE, 92 CRI, 4100 FC AT 1 METER, 4300K.	1	LED	1	LED DRIVER	40	120	SURFACE	
N1	PHILIPS OR EQUAL	WQ2H SERIES	HORIZONTAL RECTANGLE FACEPLATE, FLUSH MOUNTED LED NIGHT LIGHT. SOFT WHITE FACE PLATE WITH AMBER LED S. ANTIMICROBIAL FINISH.		LED			3	120	WALL	
U1	FAIL SAFE OR EQUAL	UCL SERIES	2 FOOT LED UNDERCABINET FIXTURE, SOLID FACE, ACRYLIC LENS, WHITE FINISH, 3500K, 750 LUMENS/FT.		LED		LED DRIVER	9	120	SURFACE	
V1	TERON OR EQUAL	VICEROY SERIES	2 FOOT LED VANITY FIXTURE WITH (2) 6W LED STRIPS, SOLID FACE, ACRYLIC LENS, UP/DOWNLIGHT HOUSING, STEEL TEXTURED WHITE HOUSING, 4000K.		LED		LED DRIVER	20	120	SURFACE	



Drawing Title ELECTRICAL SYMBOLS LEGEND AND LUMINAIRE SCHEDULE		Project Title RENOVATE 2ND FLOOR, BLDG 46 FOR MEDICAL SPECIALTIES		Date JULY 29, 2016
VA Project No. 437-14-110	Contract No. VA263-P-1217	Designed By CH	Checked By MB	Drawn By CH
Building No. 46	AutoCAD File Name 14-256 E1.dwg	Location FARGO VA HEALTH CARE SYSTEM FARGO, ND	Drawing No. E1	Dwg. 29 of 36

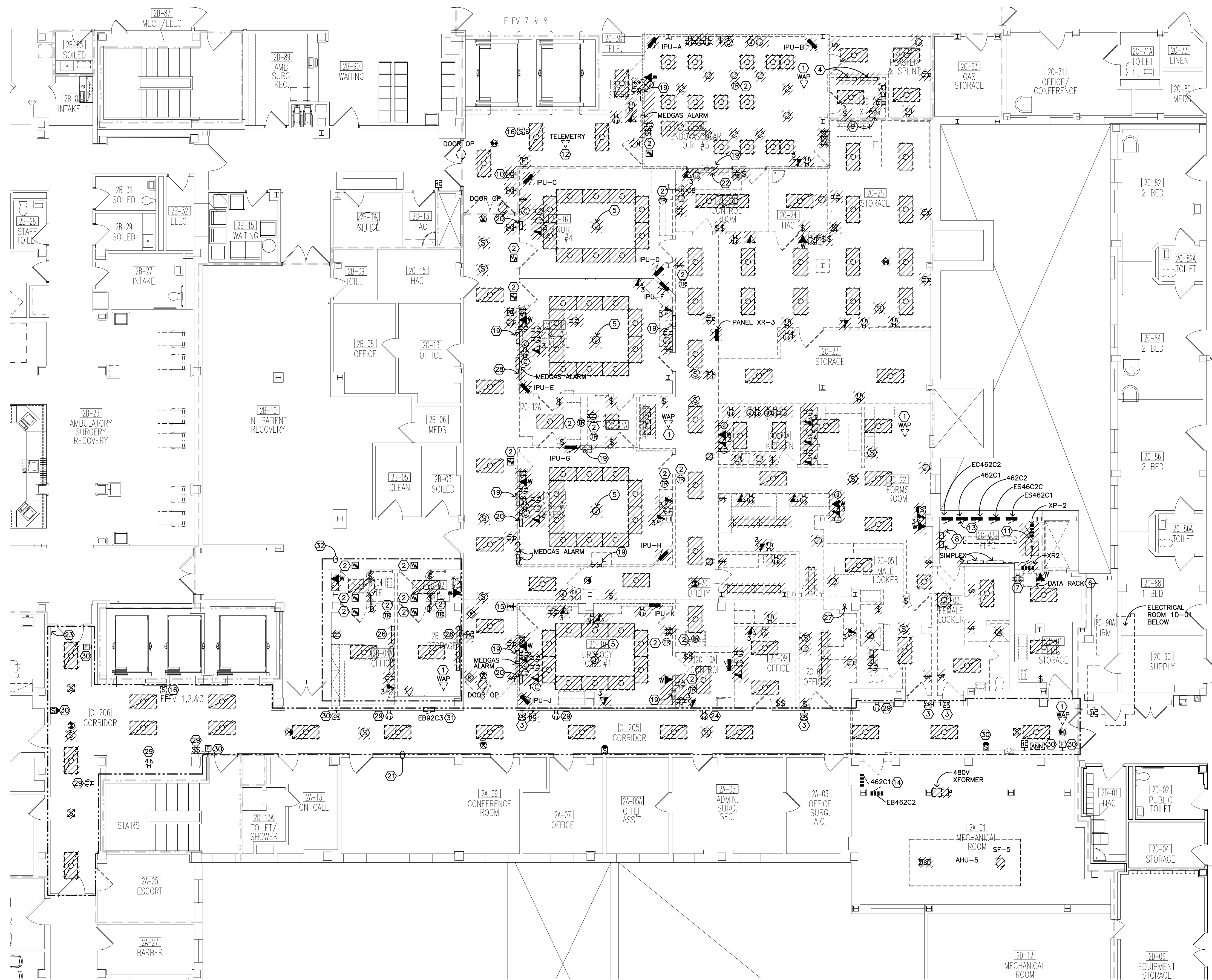
4:\projects\2014\14-256\dwg\14-256 E1.dwg Nov 29, 2016 8:17am

Revisions	Date



3 FIRST FLOOR DEMOLITION PLAN - ELECTRICAL

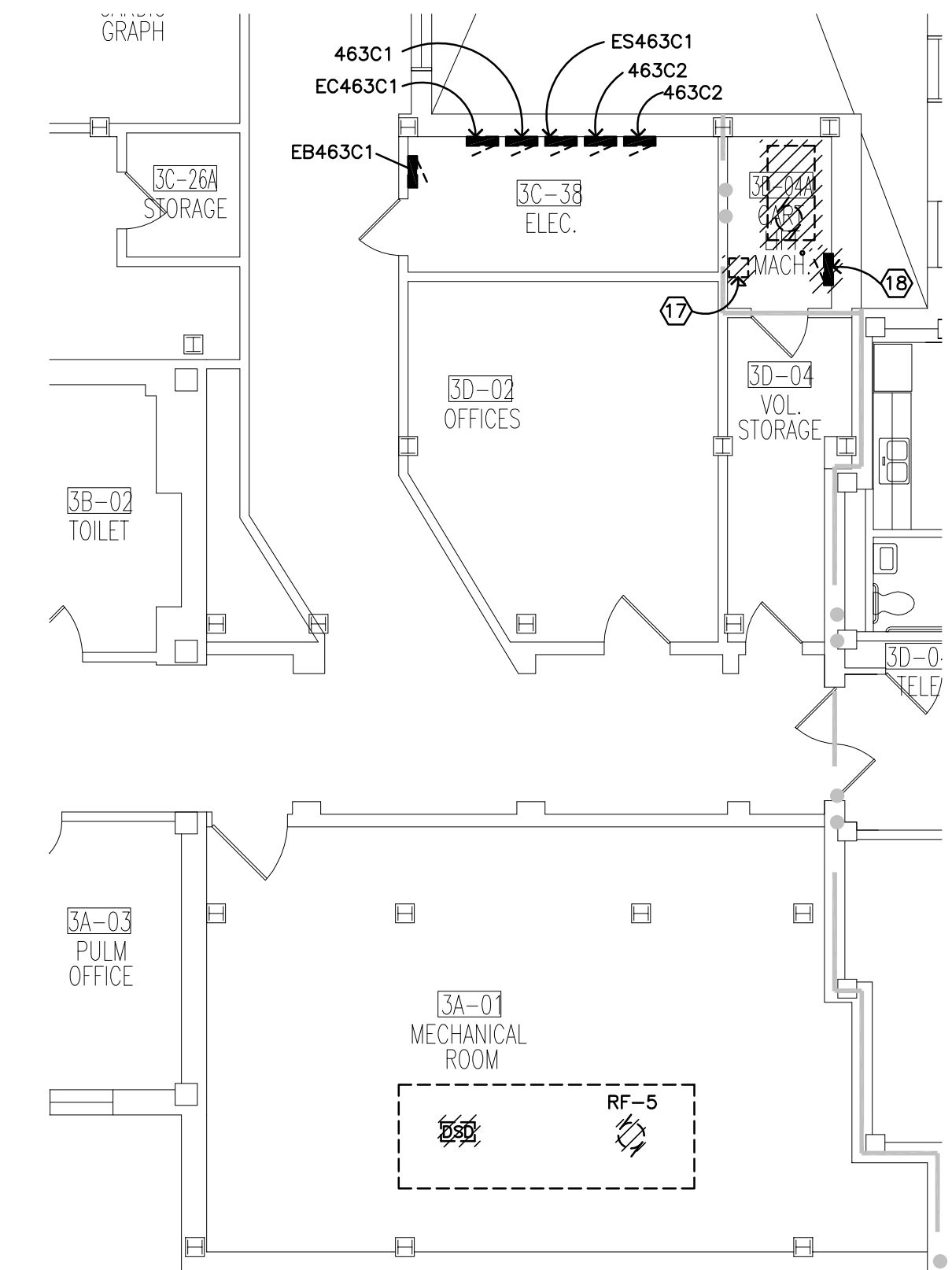
4 PARTIAL THIRD FLOOR DEMOLITION PLAN - ELECTRICAL



1 SECOND FLOOR DEMOLITION PLAN - ELECTRICAL

2 PARTIAL THIRD FLOOR DEMOLITION PLAN - ELECTRICAL

- PLAN NOTES:**
- SALVAGE EXISTING EMPLOYEE WIRELESS ACCESS ROUTER FOR REINSTALLATION, SEE SHEET E5. WIRING TO REMAIN.
 - REMOVE EXISTING WIRELESS CENTRAK RTLS DETECTION DEVICE AND TURN OVER TO OWNER.
 - REMOVE CARD READER AND ASSOCIATED WIRING, SALVAGE CARD READER FOR INSTALLATION AT NEW LOCATION, SEE SHEET E5. DO NOT OMIT THIS WORK UNDER DEDUCT ALTERNATE NOTED IN PLAN NOTE #21.
 - REMOVE EXISTING WALL MOUNTED PULLBOX AND RACEWAY SYSTEM.
 - REMOVE CONNECTIONS TO EXISTING SURGICAL LIGHT.
 - RELOCATE EXISTING WALL MOUNTED 'GET WELL NETWORK' DATA RACK FOR DEMOLITION OF EXISTING WALL. EXISTING CATEGORY 6 DATA CABLING AND EXISTING FIBER BACKBONE CABLING TO BE REROUTED TO REVISED RACK LOCATION, APPROXIMATELY 40 CATEGORY 6 CABLES TOTAL. DOWNTIME ON 'GETWELL NETWORK' EQUIPMENT TO BE MINIMIZED AND COORDINATED WITH OWNER PRIOR TO RELOCATION OF RACK.
 - REMOVE EXISTING RECEPTACLE AND CONDUIT, EXTEND EXISTING EMERGENCY CIRCUIT TO REVISED 'GET WELL NETWORK' RACK LOCATION.
 - REMOVE EXISTING INTERCOM EQUIPMENT.
 - REMOVE EXISTING DISCONNECT AND ASSOCIATED WIRING AND CONDUIT.
 - REMOVE EXISTING DOOR OPERATOR PUSH PAD, DOOR OPERATOR TO REMAIN AND SHALL BE CONTROLLED BY NEW CARD READER EQUIPMENT, SEE SHEET E5.
 - REROUTE EXISTING FIRE ALARM CONDUIT AND ASSOCIATED FIRE ALARM WIRING TO NEAREST WALL AND STUB THROUGH FLOOR TO THE MAIN FIRE ALARM PANEL IN ROOM 1D-01 BELOW.
 - REMOVE AND REINSTALL EXISTING TELEMETRY ANTENNA IN NEW CEILING.
 - REMOVE EXISTING PANEL 462C1 AND REPLACE WITH NEW 200A PANEL. RECONNECT TO EXISTING 200A FEEDER AND (17) EXISTING 20A/1P CIRCUITS, AND (1) 100A/3P FEEDER FOR PANEL 462N1. EXTEND EXISTING WIRING AS REQUIRED. COORDINATE REMOVAL OF EXISTING PANEL WITH OWNER. WORK WILL BE REQUIRED TO BE COMPLETED AFTER REGULAR OPERATING HOURS.
 - PROVIDE NEW LABEL '462C3' FOR EXISTING PANEL AND FOR THE ASSOCIATED CIRCUIT BREAKER IN BUILDING 46 SWIMCHANGAR. PROVIDE NEW LABELS FOR (7) EXISTING MECHANICAL LOADS AND THE ASSOCIATED DISCONNECTS/VFDS.
 - DOOR RELEASE PUSHBUTTON TO BE SALVAGED AND RELOCATED, SEE SHEET E5 FOR REVISED LOCATION.
 - SALVAGE AND REINSTALL EXISTING SMOKE DETECTOR. EXTEND WIRING AND CONDUIT AS NECESSARY FOR INSTALLATION IN NEW CEILING.
 - REMOVE EXISTING 208V PHASE CONNECTION TO CART LIFT TO ITS SOURCE IN PANEL EB462C2. REMOVE EXISTING DISCONNECTS, CONDUIT, WIRING AND CONNECTIONS AS REQUIRED.
 - REMOVE EXISTING ELEVATOR CONTROL PANEL AND ASSOCIATED WIRING, CONDUIT AND CONNECTIONS.
 - REMOVE EXISTING POWER/GROUND MODULE PANEL - (4) DUPLEX RECEPTACLES, AND (4) GROUNDING CONNECTIONS.
 - REMOVE EXISTING SURGICAL LIGHT CONTROL PANEL.
 - EXISTING LIGHT SWITCHES, RECEPTACLES, AND ASSOCIATED COVER PLATES TO BE REPLACED WITH NEW DEVICES. REMOVE AS NECESSARY TO ACCOMMODATE NEW WALL FINISHES AND INSTALL NEW WIRING AND BACKBOXES TO REMAIN. EXISTING LIGHT FIXTURES AND SPEAKERS SHALL BE REMOVED AND NEW DEVICES PROVIDED FOR INSTALLATION IN NEW CEILING GRID. SEE SHEETS E3 AND E5. EXISTING FIRE ALARM DEVICES AND WIRELESS ACCESS POINTS TO BE REMOVED AND REINSTALLED TO ACCOMMODATE NEW CEILING FINISHES. OMIT CORRIDOR WORK ASSOCIATED WITH NEW FINISHES AND CEILING UNDER DEDUCT ALTERNATE UNLESS OTHERWISE NOTED.
 - REMOVE EXISTING RACEWAY.
 - REMOVE EXISTING SURFACE RACEWAY AND WIRING FOR ABANDONED MAGNETIC DOOR HOLDER, DO NOT OMIT THIS WORK UNDER THE CORRIDOR DEDUCT ALTERNATE.
 - REMOVE EXISTING RECEPTACLE, RECIRCUIT CORRIDOR RECEPTACLES AS REQUIRED TO MAINTAIN OPERATION OF THE REMAINING DEVICES.
 - REMOVE EXISTING OUTLET AND RELOCATE EAST APPROXIMATELY 12" TO ACCOMMODATE NEW WALL FURRING FOR NEW EXHAUST FAN. EXTEND EXISTING WIRING AND CONDUIT AS REQUIRED, REINSTALL AND DETERMINE OUTLET. MATCH EXISTING MOUNTING HEIGHT, SEE SHEET E4 FOR REVISED LOCATION.
 - EXISTING VERTICAL HEADWALL TO BE REMOVED, DISCONNECT AND REMOVE ALL EXISTING NURSE CALL, COMMUNICATIONS, AND POWER CIRCUITING/CONDUITS TO THEIR SOURCE.
 - REMOVE EXISTING ABANDONED 2" RIGID ELECTRICAL CONDUIT IN EXISTING CHASE.
 - SALVAGE EXISTING SURGICAL LIGHT CONTROL PANEL FOR REINSTALLATION, SEE SHEET E3.
 - REMOVE DEVICE/COVER AND PROVIDE NEW TO ACCOMMODATE NEW WALL FINISHES, OMIT WORK UNDER DEDUCT ALTERNATE, SEE PLAN NOTE #21.
 - REMOVE DEVICE AND REINSTALL TO ACCOMMODATE NEW WALL FINISHES, OMIT WORK UNDER DEDUCT ALTERNATE, SEE PLAN NOTE #21.
 - REMOVE PANEL COVER AS NECESSARY TO ACCOMMODATE NEW WALL FINISHES, PROVIDE TEMPORARY COVER AS NECESSARY TO ALLOW NEW FINISHES.
 - OMIT WORK UNDER BRONCHOSCOPY ROOM DEDUCT ALTERNATE.

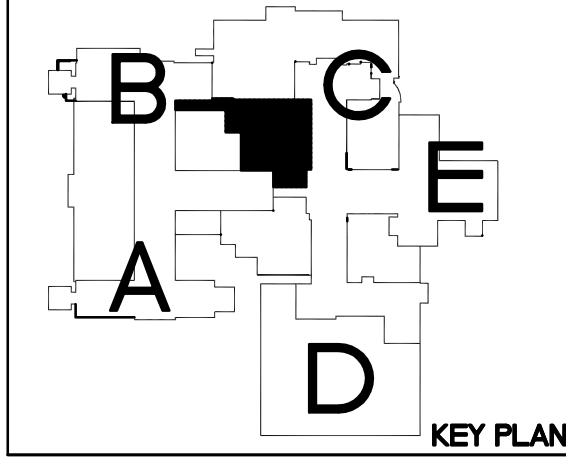


Dept. of Veterans Affairs
Health Care System
 2101 Elm Street North
 Fargo, ND 58102

IMAGE GROUP INC.
 403 CENTER AVENUE, SUITE 300
 MOORHEAD, MN 56560

MBN ENGINEERING
 MECHANICAL * ELECTRICAL * CIVIL
 503 7th St. N. Suite 200
 Fargo, ND 58102
 PHONE: 701.478.6200
 FAX: 701.478.6240

IMAGE GROUP INC., Architecture & Interiors
 OBERMILLER NELSON ENGINEERING, Mechanical Engineers
 MBN ENGINEERING, Electrical Engineers



Drawing Title FIRST, SECOND AND THIRD FLOOR DEMOLITION PLANS - ELECTRICAL		Project Title RENOVATE 2ND FLOOR, BLDG 46 FOR MEDICAL SPECIALTIES		Date JULY 29, 2016
VA Project No. 437-14-110	Contract No. VA263-P-1217	Designed By CH	Checked By MB	Scale AS NOTED
Building No. 46	AutoCAD File Name 14-256 E2.dwg	Drawn By CH	Location FARGO VA HEALTH CARE SYSTEM FARGO, ND	Drawing No. E2
				Dwg. 30 of 36

Department of Veterans Affairs

4:\projects\2014\14-256\Drawings\14-256 E2.dwg Nov 29, 2016 8:17am