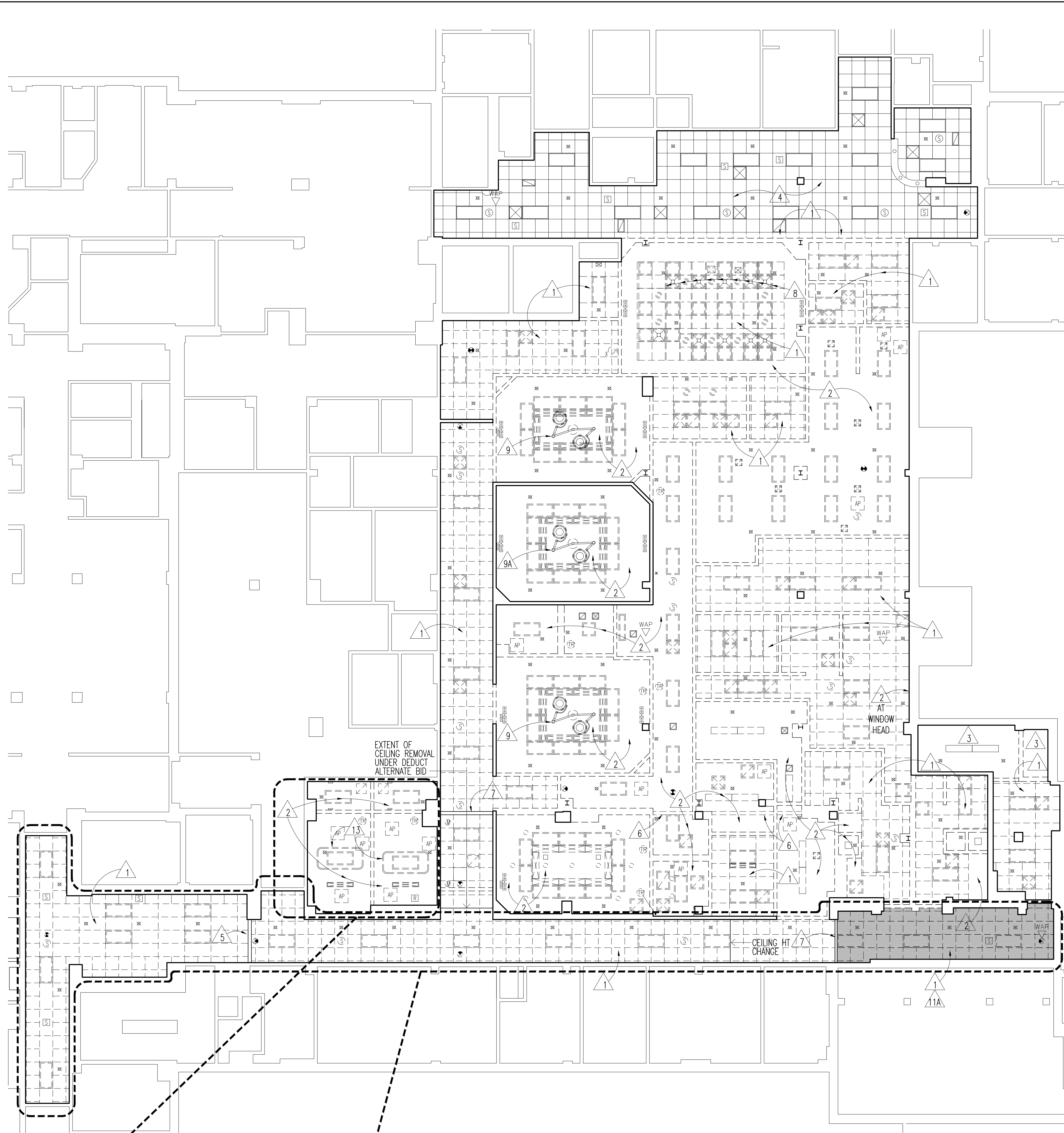


FIRST FLOOR REFLECTED CEILING DEMOLITION PLAN
1/8"=1'-0"

COORDINATE AND SCHEDULE
FIRST FLOOR WORK WITH
PHARMACY AND CLINIC HOURS



SECOND FLOOR REFLECTED CEILING DEMOLITION PLAN
1/8"=1'-0"

OMIT CEILING
DEMOLITION UNDER
DEDUCT ALTERNATE BID

OMIT CORRIDOR CEILING
DEMOLITION UNDER
DEDUCT ALTERNATE BID

CEILING DEMOLITION NOTES

GENERAL

1. REFER TO MECHANICAL DRAWINGS FOR RELATED MECHANICAL DEMOLITION.
2. REFER TO ELECTRICAL DRAWINGS FOR RELATED ELECTRICAL DEMOLITION.
3. REMOVE WALLS, PARTITIONS OR FURRING AS INDICATED. SEE DEMOLITION PLAN.
4. PATCH TO MATCH SPRAY-ON FIREPROOFING DAMAGED OR REMOVED FROM STRUCTURAL MEMBERS DURING DEMOLITION.
5. CEILING WORK IN SPACES OPEN TO PUBLIC (I.E. CORRIDORS) SHOULD BE SCHEDULED AFTER BUSINESS HOURS/ON WEEKENDS; AND/OR CORRIDORS SHOULD BE SUBDIVIDED TO MAINTAIN CIRCULATION.

NOTE SYMBOLS LEGEND

- 1 REMOVE SUSPENDED CEILING GRID & ACOUSTICAL TILE AS INDICATED.
- 2 REMOVE GWB CEILING OR SOFFIT.
- 3 EXPOSED STRUCTURE.
- 4 EXISTING CEILING TO REMAIN; PATCH TO MATCH.
- 5 EXISTING SOFFIT TO REMAIN.
- 6 REMOVE EXPANSION JOINT COVER.
- 7 REMOVE EXPANSION JOINT COVER; SALVAGE FOR REINSTALLATION.
- 8 REMOVE UNISTRUT AND SUPPORT STRUCTURE.
- 9 EMPLOY SERVICES OF MANUFACTURER OR APPROVED REPRESENTATIVE TO REMOVE SURGICAL LIGHT, INCLUDING SUPPORT STRUCTURE; TURN OVER TO OWNER.
- 9A EMPLOY SERVICES OF MANUFACTURER OR APPROVED REPRESENTATIVE TO REMOVE AND REINSTALL SURGICAL LIGHT.
- 10 PATCH TO MATCH EXISTING PARTITION AT REMOVED PIPE.
- 11 REMOVE AND REINSTALL SUSPENDED A.T. CEILING AND FIXTURES AS REQUIRED FOR MECHANICAL WORK AS INDICATED BY HATCH.
- 11A DEDUCT ALTERNATE BID: REMOVE AND REINSTALL SUSPENDED A.T. CEILING AND FIXTURES AS REQUIRED FOR MECHANICAL WORK AS INDICATED BY HATCH.
- 12 CUT OPENING IN GWB PARTITION AS REQUIRED FOR MECHANICAL WORK; PATCH TO MATCH EXISTING FINISH.
- 13 REMOVE L.V. TRACK.

CEILING SYMBOLS LEGEND

- CEILING DEMOLITION AS INDICATED
- 2'-0" x 2'-0" CEILING GRID
- 2'-0" x 4'-0" CEILING GRID
- RECESSED FLUORESCENT LIGHT FIXTURE
- SURFACE MOUNTED FLUORESCENT LIGHT FIXTURE
- DOWN LIGHT FIXTURE
- SPRINKLER
- PHOTOELECTRIC DETECTOR
- SPEAKER
- WAP WIRELESS ACCESS POINT; SEE ELEC. FOR IDENTIFICATION OF FACILITY VERSUS PATIENT DEVICES.
- RTLS RTLS DEVICE; SEE ELEC.
- EXIT
- SUPPLY GRILLE, CEILING DIFFUSER
- RETURN AIR GRILLE; 'E' DENOTES EXHAUST
- AP ACCESS PANEL
- MED GAS OUTLET
- MISC ELEC OUTLET; SEE ELEC.
- X-RAY LIGHT
- MOTION SENSOR

I:\Server\Project\Draw\1304_Fargo_VA_Health_Care_System\10_Bldg_46_2nd_Floor\2016\Plan_Second.dwg, Nov 22, 2016 - 10:14am

	<p>Dept. of Veterans Affairs Health Care System 2101 Elm Street North Fargo, ND 58102</p>	<p>IMAGE GROUP INC. 403 CENTER AVENUE, SUITE 300 MOORHEAD, MN 56560</p>	<p>IMAGE GROUP INC., Architecture & Interiors TRIO ENVIRONMENTAL, Environmental Consultants OSBERMILLER NELSON ENGINEERING, Mechanical Engineers MEN ENGINEERING, Electrical Engineers</p>	<p>I hereby certify that this plan specification, or report was prepared by me or under my direct supervision, and that I am duly Registered Architect under the laws of the State of North Dakota. <i>Russ Meyer</i> Date 07/29/16 Reg. No. 378</p>		<p>Drawing Title FIRST AND SECOND FLOOR REFLECTED CEILING DEMOLITION PLANS</p> <p>VA Project No. 437-14-110 Contract No. VA263-P-1217 VA263-C- AutocAD File Name: Plan_Second.dwg</p>	<p>Project Title RENOVATE 2ND FLOOR, BLDG 46 FOR MEDICAL SPECIALTIES</p> <p>Designed By: RM Checked By: RM Drawn By: AH</p>	<p>Date JULY 29, 2016</p> <p>Scale 1/8"=1'-0"</p> <p>Drawing No. A6</p> <p>Dwg. 9 of 36</p>	
--	---	---	--	--	--	--	--	---	--

CEILING REMODELING NOTES

GENERAL

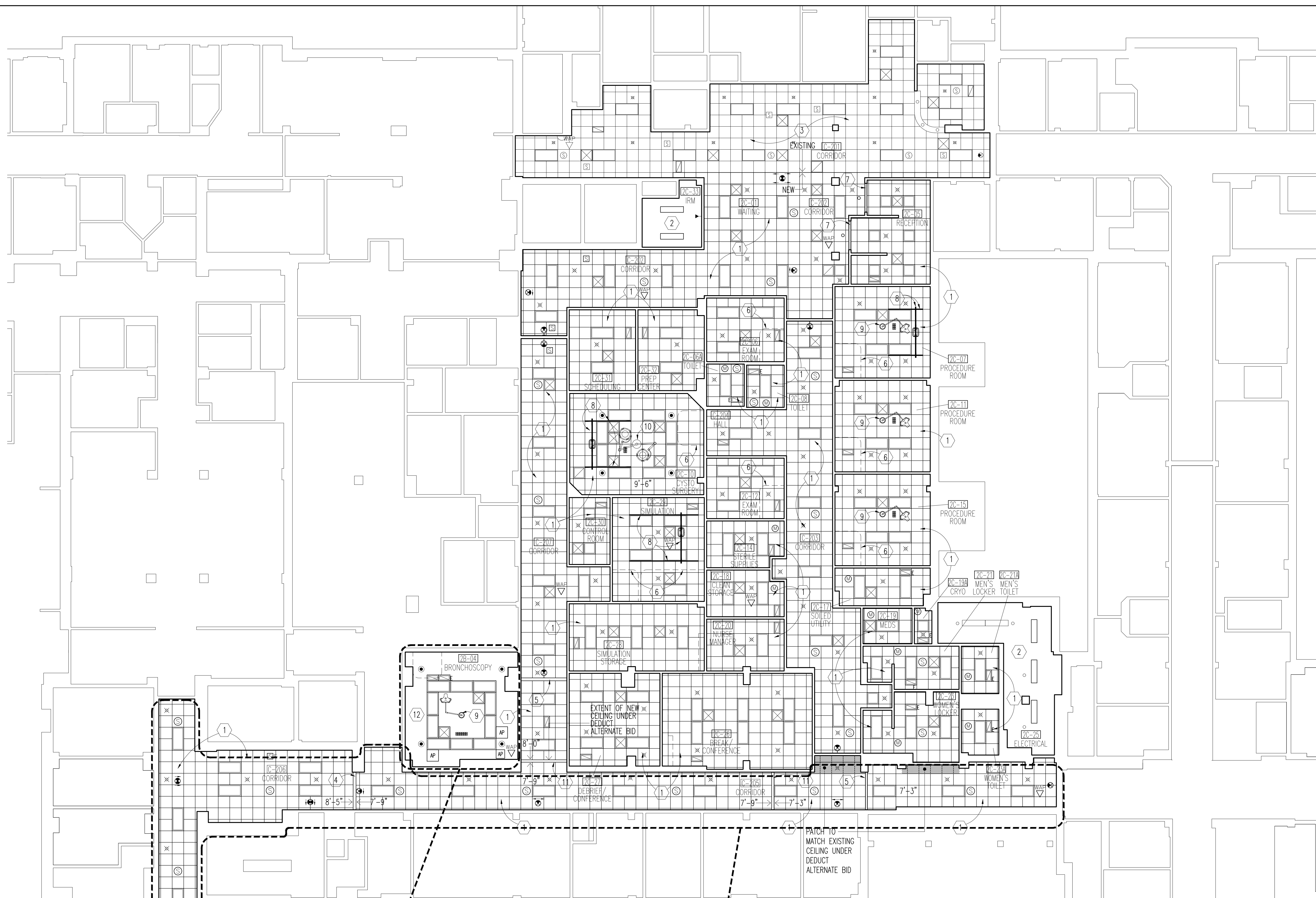
- REFER TO MECHANICAL DRAWINGS FOR RELATED MECHANICAL WORK
- REFER TO ELECTRICAL DRAWINGS FOR RELATED ELECTRICAL WORK
- CEILING WORK IN SPACES OPEN TO PUBLIC (I.E. CORRIDORS) SHOULD BE SCHEDULED AFTER BUSINESS HOURS/ON WEEKENDS; AND/OR CORRIDORS SHOULD BE SUBDIVIDED TO MAINTAIN CIRCULATION.
- CEILING HEIGHT IS 8'-0" AFF UNLESS NOTED OTHERWISE.

NOTE SYMBOLS LEGEND

- NEW SUSPENDED ACOUSTICAL TILE AND GRID CEILING
- EXPOSED STRUCTURE
- EXISTING CEILING REMAINS. PATCH TO MATCH AS REQUIRED.
- EXISTING GWB SOFFIT REMAINS. PATCH TO MATCH AS REQUIRED.
- REINSTALL EXISTING EXPANSION JOINT COVER SALVAGED FROM DEMOLITION.
- CURTAIN TRACK (CC)
- MOTORIZED COILING COUNTER SHUTTER OPENING; SEE DETAILS 15/A5, 16/A5, AND 17/A5.
- CEILING-MOUNTED PATIENT LIFT (CC). PROVIDE SUPPORT STRUCTURE; SEE DETAIL 2/A7.
- EXAM LIGHT (CC). PROVIDE SUPPORT STRUCTURE; SEE DETAIL 1/A7.
- REINSTALL EXISTING SURGICAL LIGHT SALVAGED FROM DEMOLITION.
- GWB SOFFIT; SEE DETAIL 3/A7.
- GWB CEILING.

CEILING SYMBOLS LEGEND

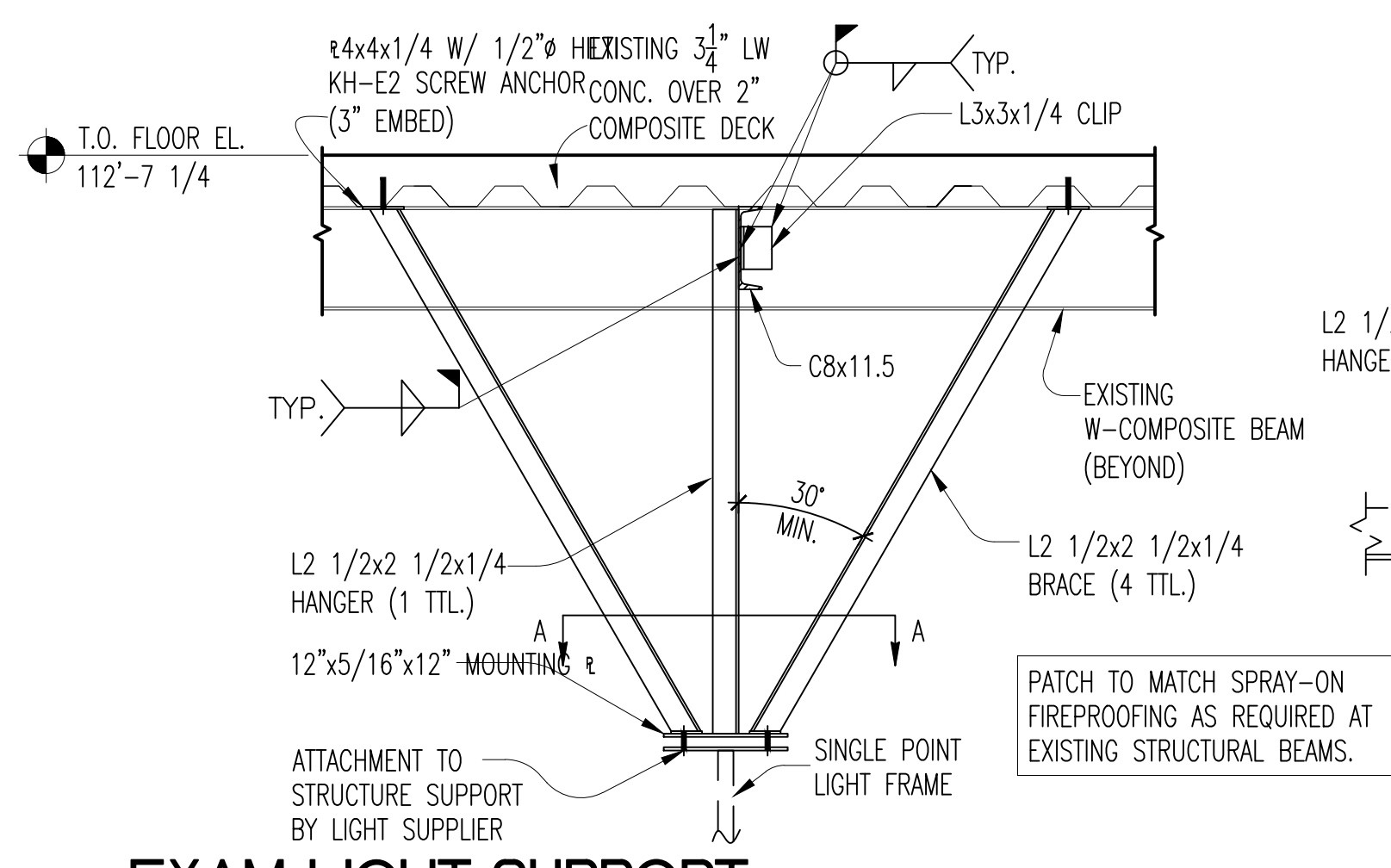
- 2'-0" x 2'-0" CEILING GRID
- RECESSED FLUORESCENT LIGHT FIXTURE
- SURFACE MOUNTED FLUORESCENT LIGHT FIXTURE
- DOWN LIGHT FIXTURE
- SPRINKLER
- PHOTOELECTRIC DETECTOR
- SPEAKER
- WIRELESS ACCESS POINT; SEE ELEC. FOR IDENTIFICATION OF FACILITY VERSUS PATIENT DEVICES.
- RTLS DEVICE; SEE ELEC.
- MOTION SENSOR
- EXIT
- SUPPLY GRILLE, CEILING DIFFUSER
- RETURN AIR GRILLE; 'E' DENOTES EXHAUST
- DASHED LINE INDICATES OUTLINE OF UPPER CABINET BELOW
- MED GAS OUTLET
- EXAM LIGHT (CC)
- ACCESS PANEL



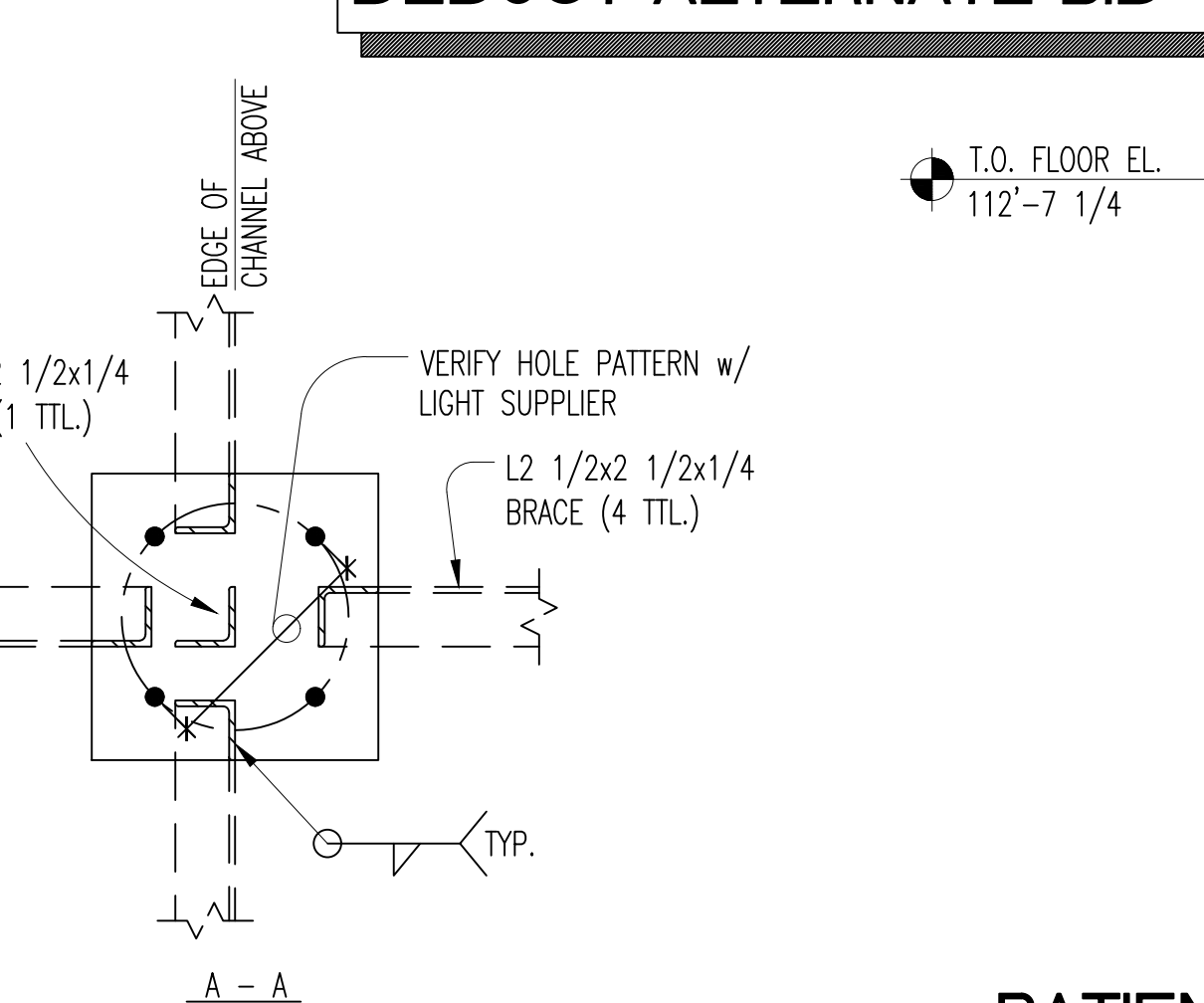
OMIT BRONCHOSCOPY CEILING REMODEL UNDER DEDUCT ALTERNATE BID

OMIT CORRIDOR CEILING REMODEL UNDER DEDUCT ALTERNATE BID

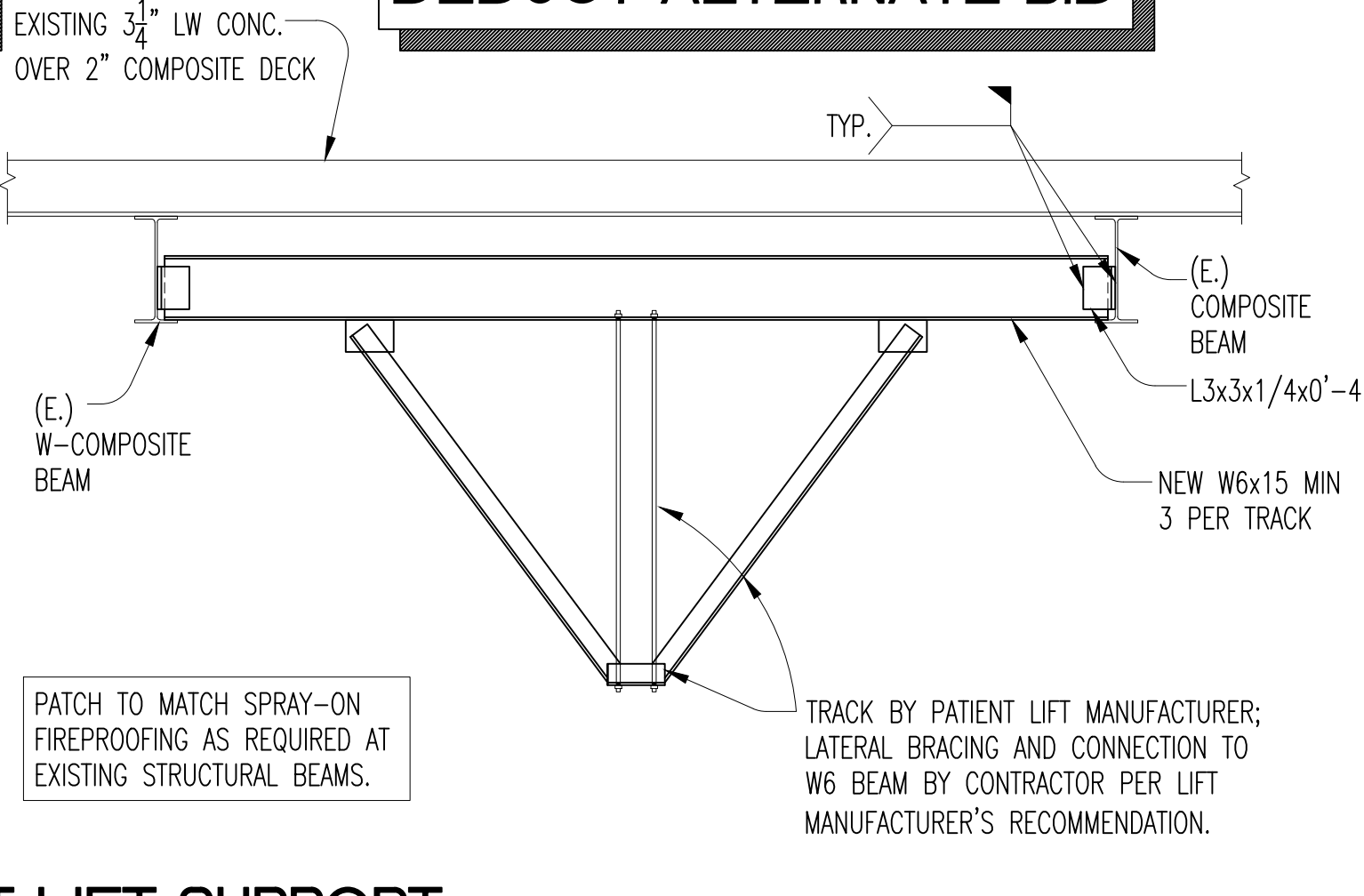
SECOND FLOOR REFLECTED CEILING PLAN
1/8"=1'-0"



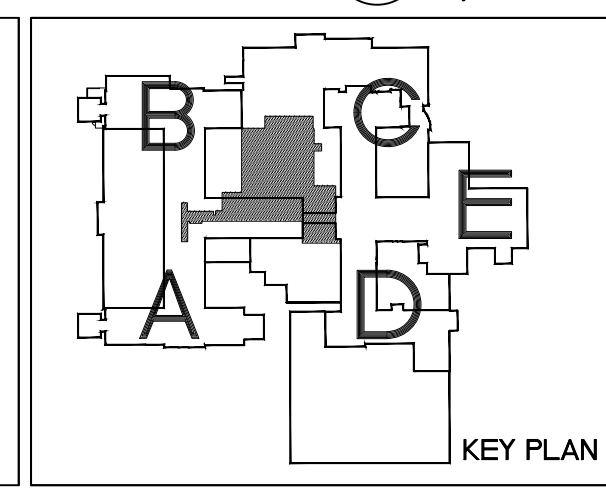
1 EXAM LIGHT SUPPORT
A7 3/4"-1'-0"



2 PATIENT LIFT SUPPORT
A7 3/4"-1'-0"



3 SOFFIT DETAIL
A7 1 1/2"-1'-0"



Drawing Title SECOND FLOOR REFLECTED CEILING PLAN		Project Title RENOVATE 2ND FLOOR, BLDG 46 FOR MEDICAL SPECIALTIES		Date JULY 29, 2016	Department of Veterans Affairs
VA Project No. 437-14-110	Contract No. VA263-P-1217 VA263-C-	Designed By RM	Checked By RM	Drawn By AH	
Building No. 46	AutocAD File Name Plan_Second.dwg	Localn FARGO VA HEALTH CARE SYSTEM FARGO, ND	Drawing No. A7		
Scale 1/8"=1'-0"		Dwg. 10 of 36			

Dept. of Veterans Affairs
Health Care System
2101 Elm Street North
Fargo, ND 58102

IMAGE GROUP INC.
403 CENTER AVENUE, SUITE 300
MOORHEAD, MN 56560

MAGE GROUP INC., Architecture & Interiors
TTRIO ENVIRONMENTAL, Environmental Consultants
OSBERILLER NELSON ENGINEERING, Mechanical Engineers
MEN ENGINEERING, Electrical Engineers

I hereby certify that this plan specification, or report was prepared by me or under my direct supervision, and that I am duly Registered Architect under the laws of the State of North Dakota.
Russell Murray
Date 07/29/16 Reg. No. 378

I:\Server Project Data\13361_Fargo_VA_Health_Care_System\10_Bldg_46_2nd_Floor_Ceiling\Plan_Second.dwg, No. 22, 2016 - 10:14am