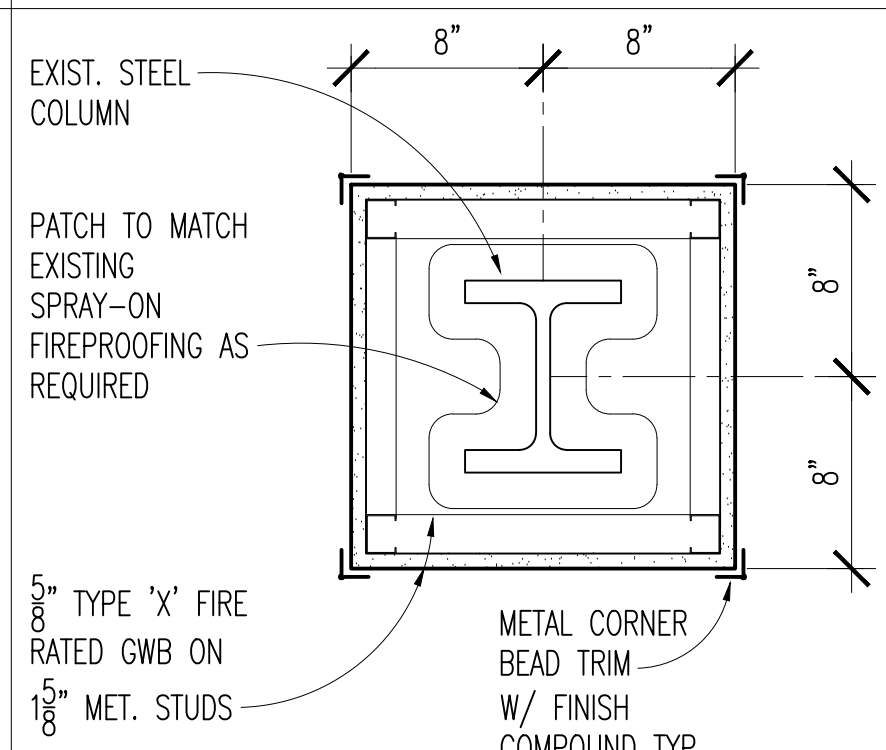
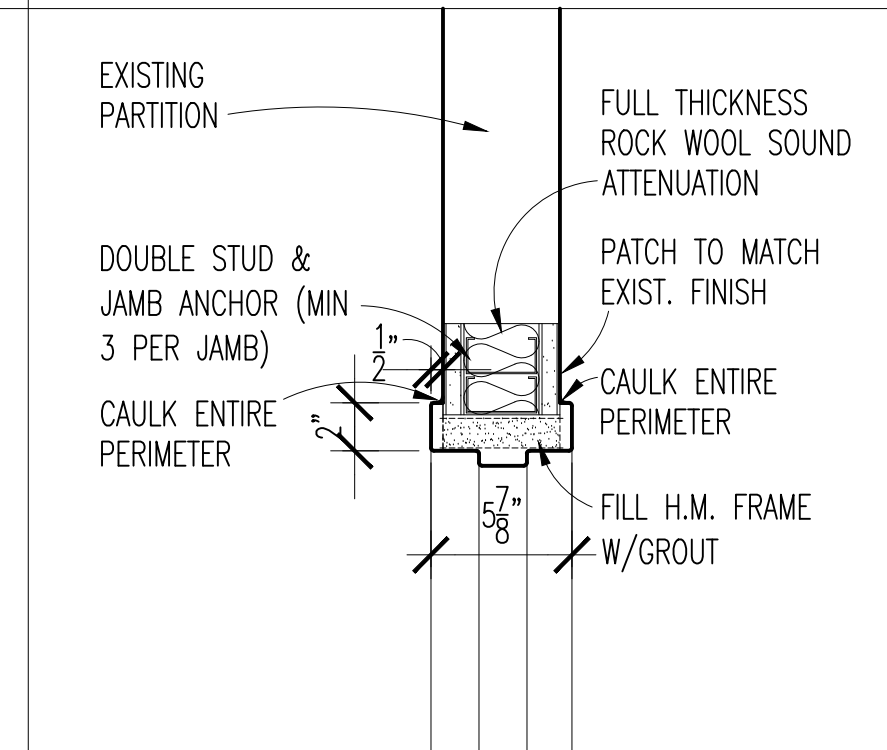
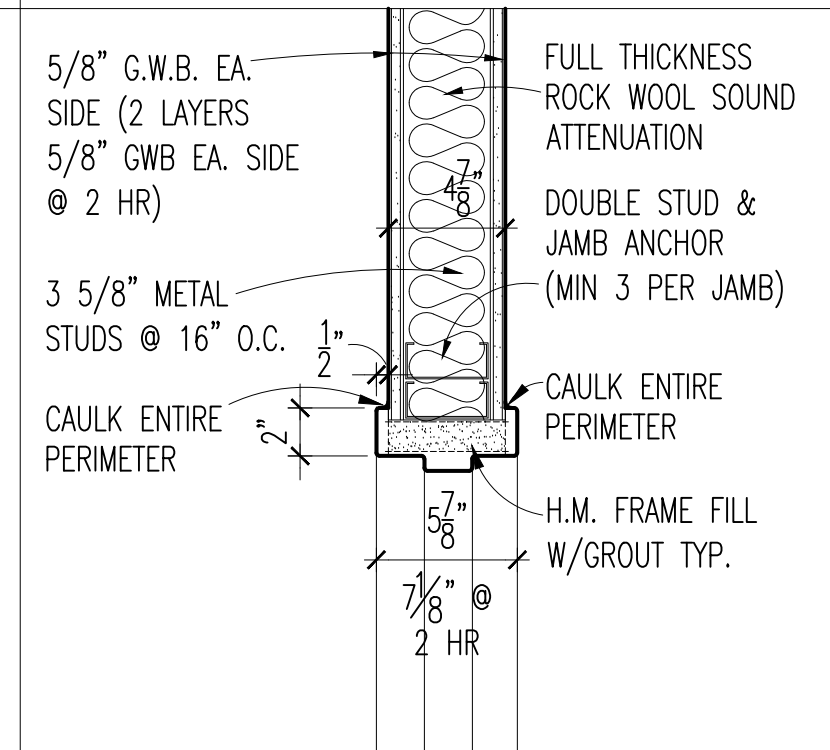


1 HAND/GUARD RAILS  
A4 NO SCALE

2 CORNER GUARD  
A4 NO SCALE

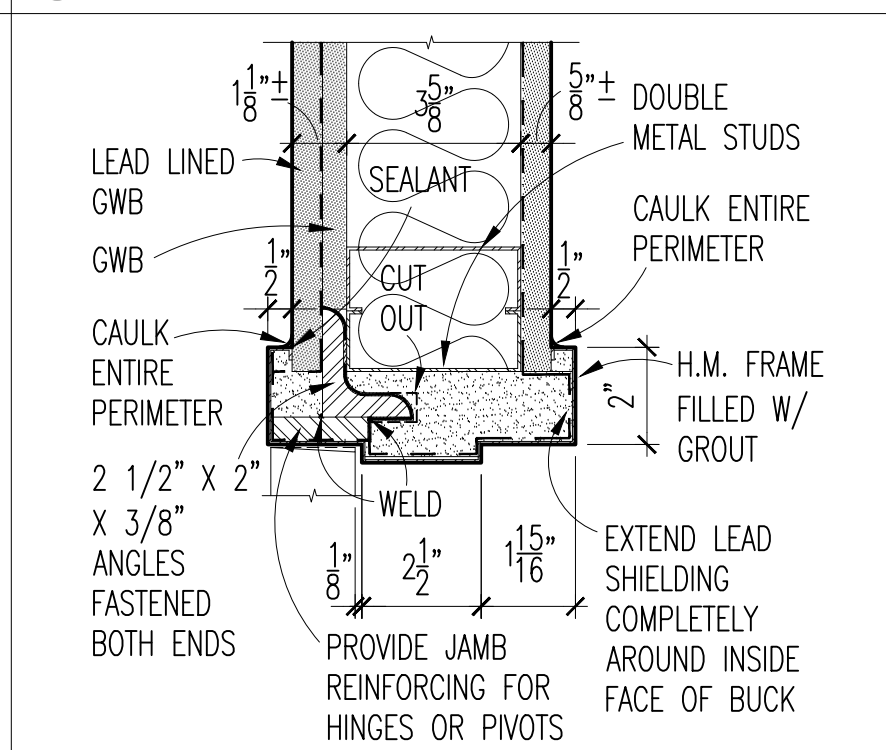
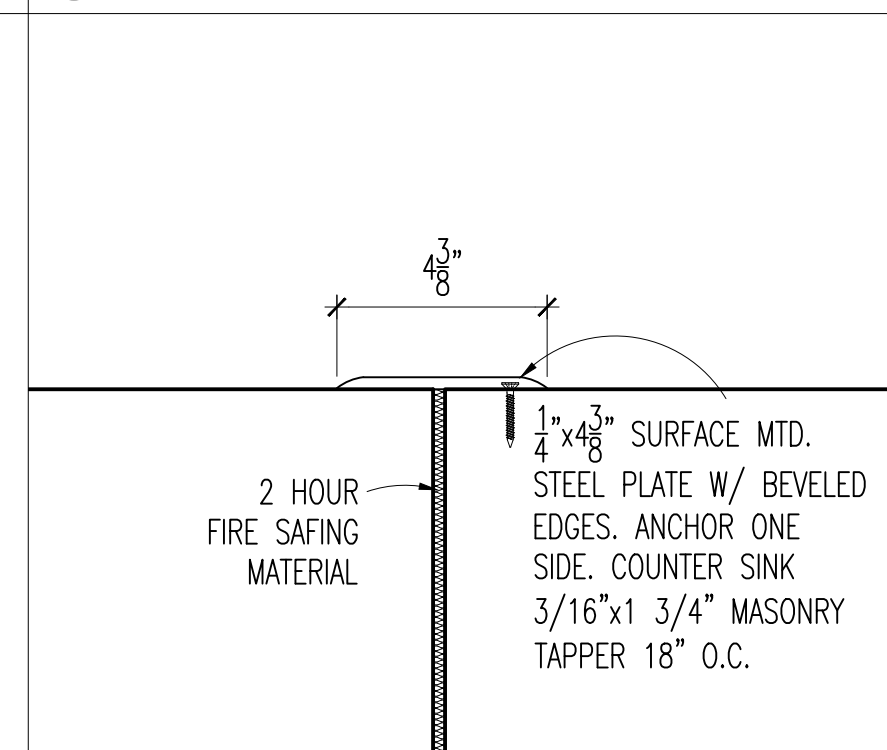
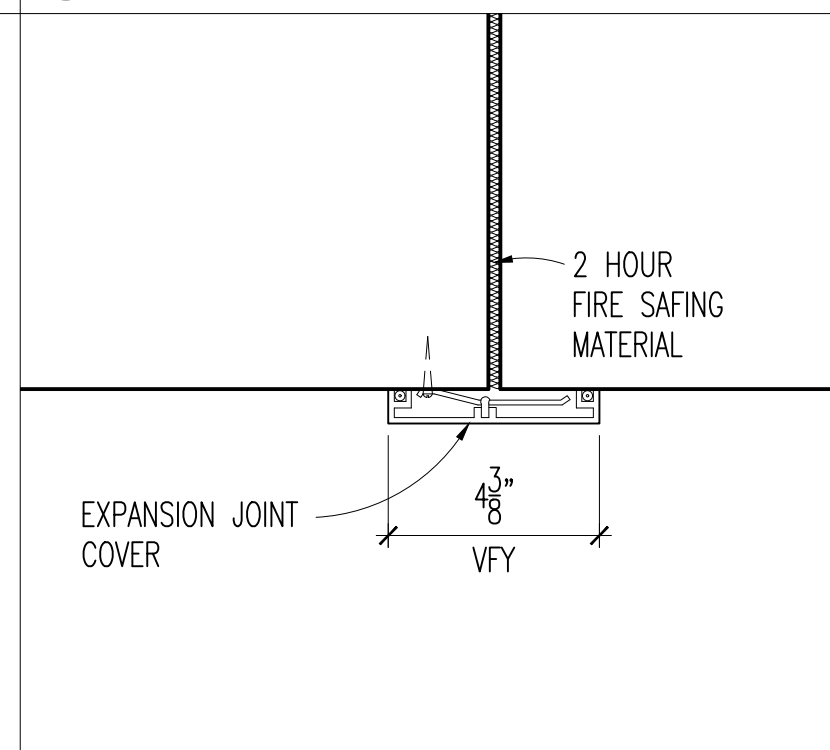
3 FLOORING TRANSITION  
A4 NO SCALE



4 H.M. FRAME/TYP. INT. DOOR  
A4 1/2"-1'-0" JAMB SIM.

5 HEAD OF EXIST. INT. PART.  
A4 1/2"-1'-0" JAMB SIM.

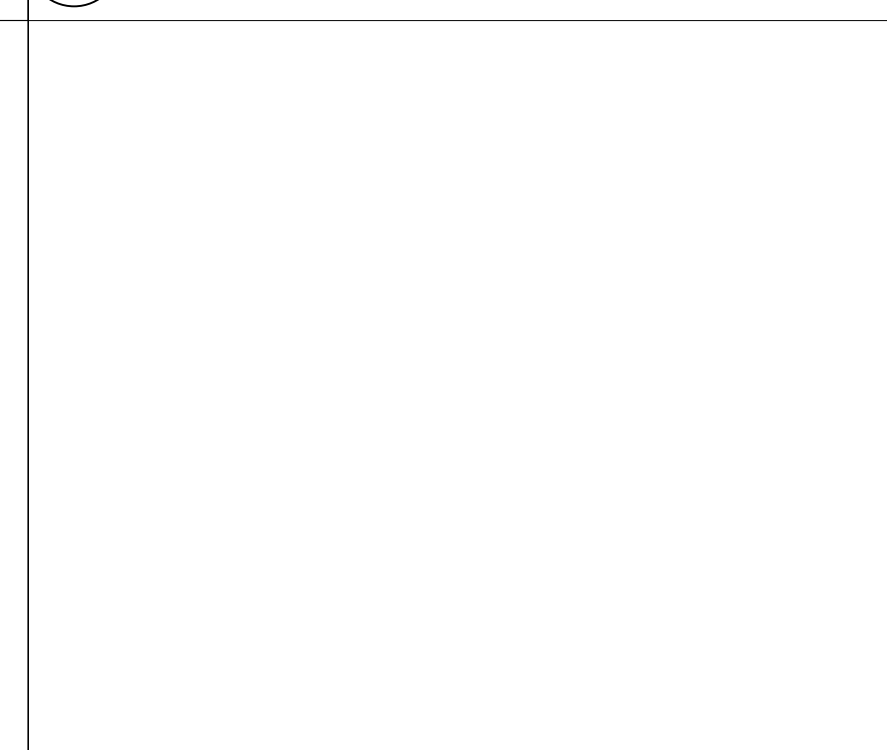
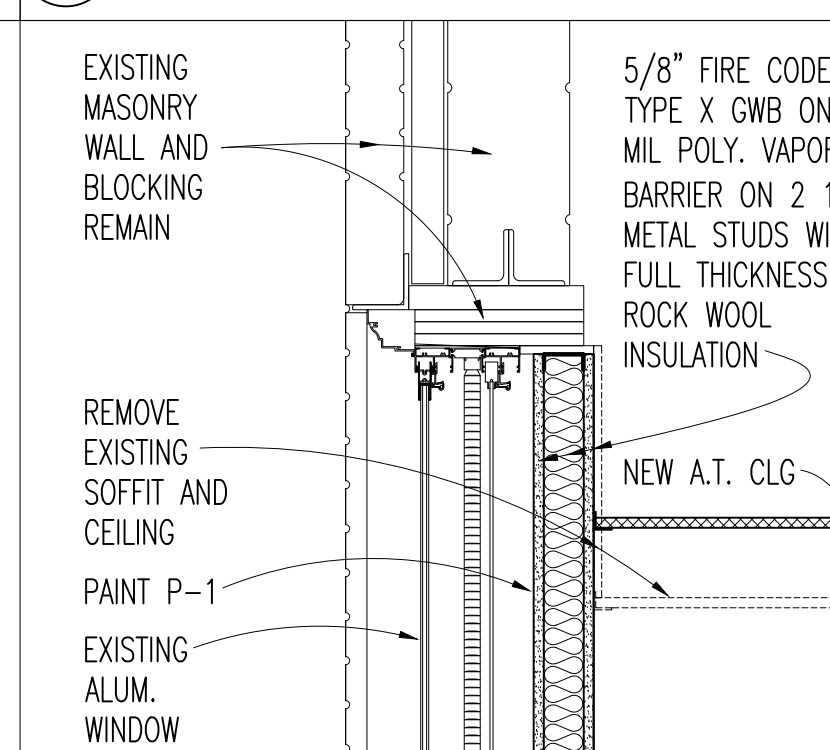
6 TYP. COLUMN COVER  
A4 1/2"-1'-0" (UL DESIGN NO. X527)



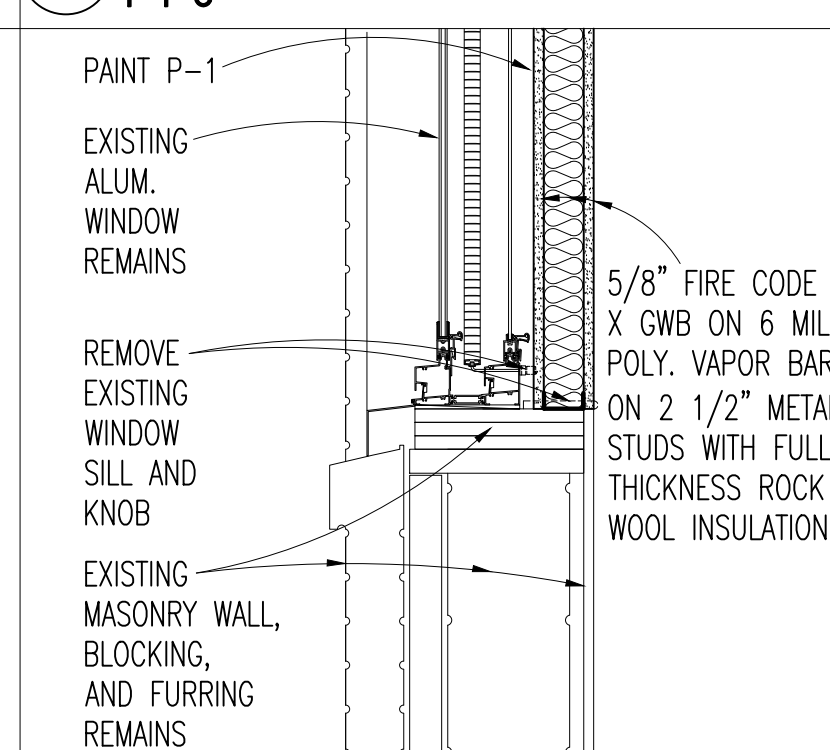
7 WALL EXP. JT. COVER  
A4 3'-1'-0"

8 FLOOR EXP. JT. COVER  
A4 3'-1'-0"

9 LEAD LINED H.M. FRAME  
A4 3'-1'-0"



10 SPANDREL WDW HEAD  
A4 1'-1'-0"

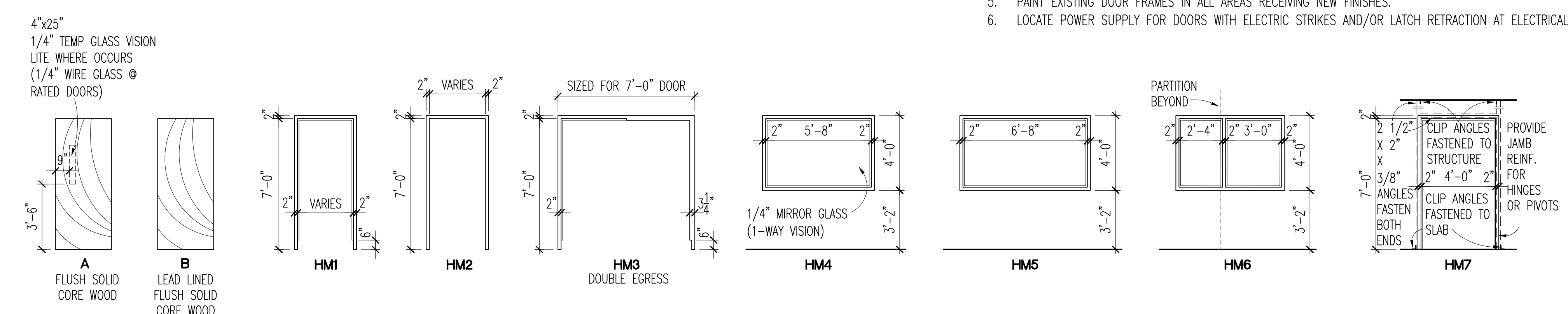


11 SPANDREL WDW SILL  
A4 1'-1'-0"

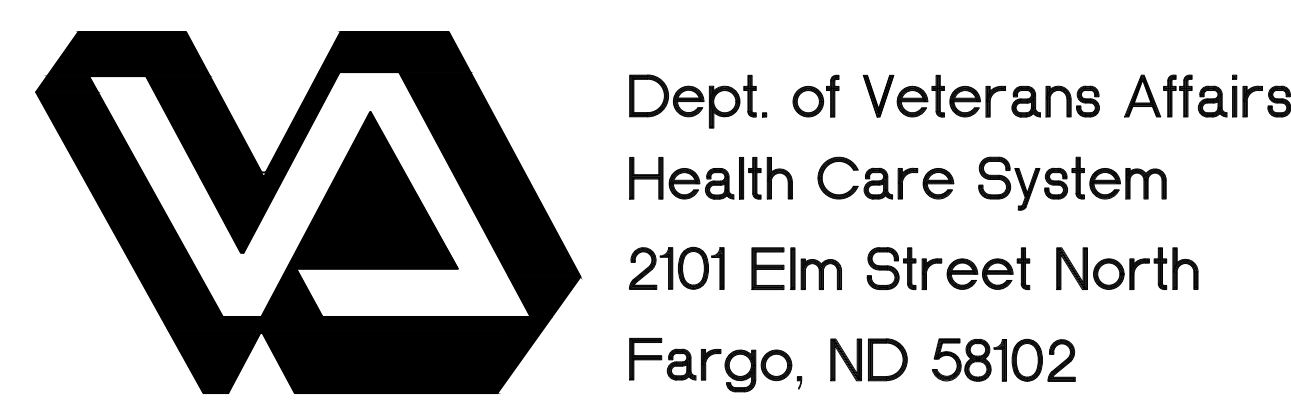
ROOM FINISH SCHEDULE											DOOR SCHEDULE									
NO.	NAME	FLOOR		BASE		WALLS		CEILING		REMARKS	ROOM	NO.	DOOR		TYPE	FRAME ELEV.	DETAIL	HWRP GROUP	LABEL	REMARKS
		CARPET	VCT	SHEET VINYL	CERAMIC TILE	VINYL	SHEET VINYL	CERAMIC TILE	PANT				GLAZED COATING	CERAMIC TILE						
C-201	CORRIDOR	●								SEE NOTE 1	Mechanical	2A-01	4'-0" X 7'-0" X 1 3/4"	A	HM1	4/A4	34			
C-202	CORRIDOR	●								SEE NOTE 1										
C-203	CORRIDOR	●																		
C-204	HALL	●																		
C-205	CORRIDOR	●								SEE NOTE 1										
C-206	CORRIDOR	●								SEE NOTE 1										
C-207	CORRIDOR	●								SEE NOTE 1										
C-208	CORRIDOR	●								SEE NOTE 1										
2B-04	BRONCHOSCOPY		●																	
2C-01	WAITING		●							SEE NOTE 1										
2C-05	RECEPTION		●																	
2C-06	EXAM ROOM		●																	
2C-07	PROCEDURE ROOM		●																	
2C-08	EXAM ROOM		●																	
2C-10	CYSTOSCOPIC SURGERY		●																	
2C-11	WOMEN'S TOILET		●																	
2C-12	MEN'S TOILET		●																	
2C-13	PROCEDURE ROOM		●																	
2C-14	STERILE SUPPLIES		●																	
2C-15	PROCEDURE ROOM		●																	
2C-17	SOILED UTILITY		●																	
2C-18	CLEAN STORAGE		●																	
2C-19	MEDS		●																	
2C-19A	CRYOGENIC STORAGE		●																	
2C-20	NURSE MANAGER		●																	
2C-21	MEN'S LOCKER		●																	
2C-21A	MEN'S TOILET		●																	
2C-23	WOMEN'S LOCKER		●																	
2C-23A	WOMEN'S TOILET		●																	
2C-25	ELECTRICAL		●																	
2C-26	BREAK ROOM		●																	
2C-27	DEBRIEF/CONFERENCE		●																	
2C-28	SIMULATION STORAGE		●																	
2C-29	SIMULATION		●																	
2C-30	CONTROL ROOM		●																	
2C-31	SCHEDULING		●																	
2C-32	PREP CENTER		●																	
2C-33	IRM		●																	
3C-13	CARDIOLOGY READING ROOM		○							SEE NOTE 2										

ROOM FINISH SCHEDULE NOTES:  
1. SEE SHEET AS FOR VINYL WALL COVERING COLOR LOCATIONS.  
2. EXISTING FINISHES REMAIN. EXISTING CERAMIC TILE IS WAINSCOT ONLY. NEW FURRED WALL TO BE PAINTED GWB WITH VINYL BASE.

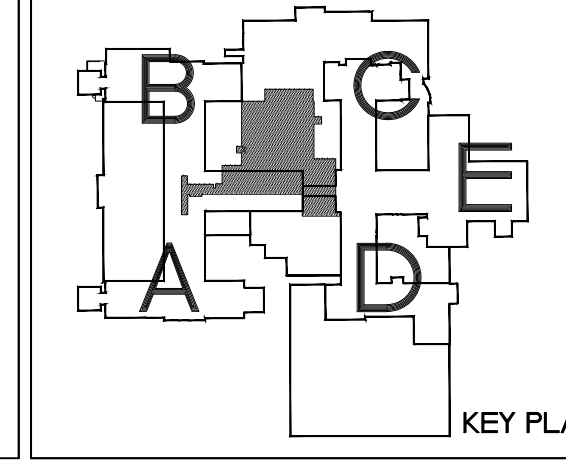
DOOR SCHEDULE NOTES:  
1. RETAIN EXISTING DOOR AND FRAME; REPLACE EXISTING HARDWARE AS REQUIRED TO PROVIDE INDICATED HARDWARE GROUP FUNCTION.  
2. RETAIN EXISTING DOOR OPERATOR.  
3. RETAIN EXISTING CARD READER.  
4. RETAIN EXISTING FRAME; PROVIDE NEW DOOR AND HARDWARE.  
5. PAINT EXISTING DOOR FRAMES IN ALL AREAS RECEIVING NEW FINISHES.  
6. LOCATE POWER SUPPLY FOR DOORS WITH ELECTRIC STRIKES AND/OR LATCH RETRACTION AT ELECTRICAL ROOM 2C-25.



DOOR, H.M. FRAME AND WINDOW ELEVATIONS  
1/4"-1'-0"



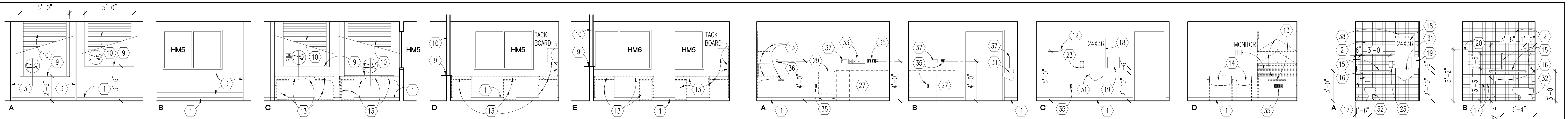
I hereby certify that this plan specification, or report was prepared by me or under my direct supervision, and that I am duly Registered Architect under the laws of the State of North Dakota.  
Date 07/29/16 Reg. No. 378



Drawing Title <b>SCHEDULES AND DETAILS</b>		Project Title <b>RENOVATE 2ND FLOOR, BLDG 46 FOR MEDICAL SPECIALTIES</b>		Date <b>JULY 29, 2016</b>
VA Project No. <b>437-14-110</b>	Contract No. <b>VA263-P-1217</b>	Designed By <b>RM</b>	Checked By <b>RM</b>	Scale <b>AS SHOWN</b>
Building No. <b>46</b>	AutocAD File Name <b>Schedules.dwg</b>	Drawn By <b>AH</b>	Localn <b>FARGO VA HEALTH CARE SYSTEM FARGO, ND</b>	Drawing No. <b>A4</b>



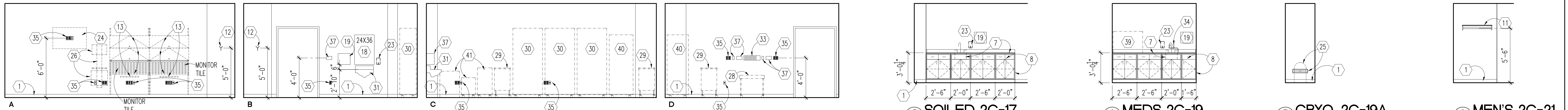
I:\Server\Project\2016\13001\_Empg\_Mt\_Health\_Care\_System\10\_Bldg\_46\_2nd\_Floor\0001\PM\0001\Schedules.dwg Rev. 22, 2016 - 10:13am



1 RECEPTION 2C-05  
A5 1/4"-1'-0"

2 EXAM 2C-06  
A5 1/4"-1'-0"

3 TOILET 2C-06A  
A5 1/4"-1'-0" TLT 2C-08 SAME



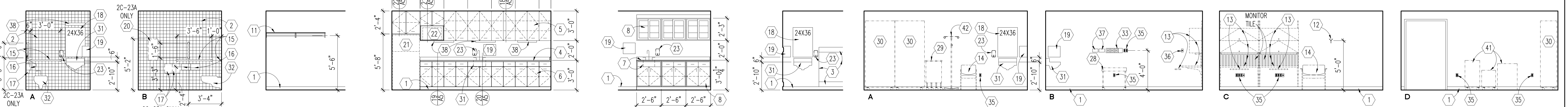
4 CYSTOSCOPIC SURGERY 2C-10  
A5 1/4"-1'-0"

5 SOILED 2C-17  
A4 1/4"-1'-0"

6 MEDS 2C-19  
A5 1/4"-1'-0"

7 CRYO. 2C-19A  
A5 1/4"-1'-0"

8 MEN'S 2C-21  
A5 1/4"-1'-0"



9 MEN'S TOILET 2C-21A  
A5 1/4"-1'-0" WOMEN'S TOILET 2C-23A REV./SIM.

10 WOMEN'S 2C-23  
A5 1/4"-1'-0"

11 BREAK/CONFERENCE 2C-26  
A5 1/4"-1'-0"

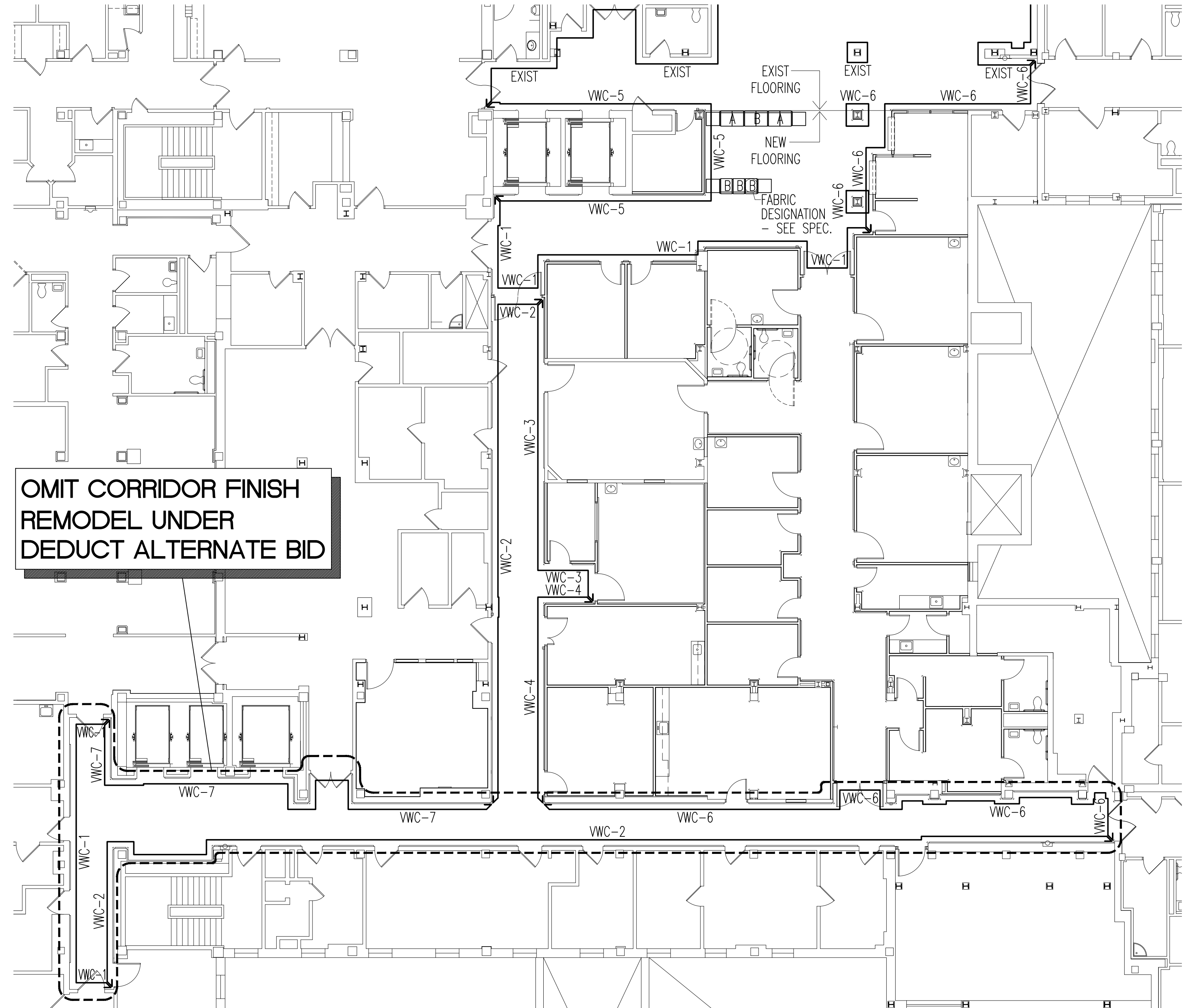
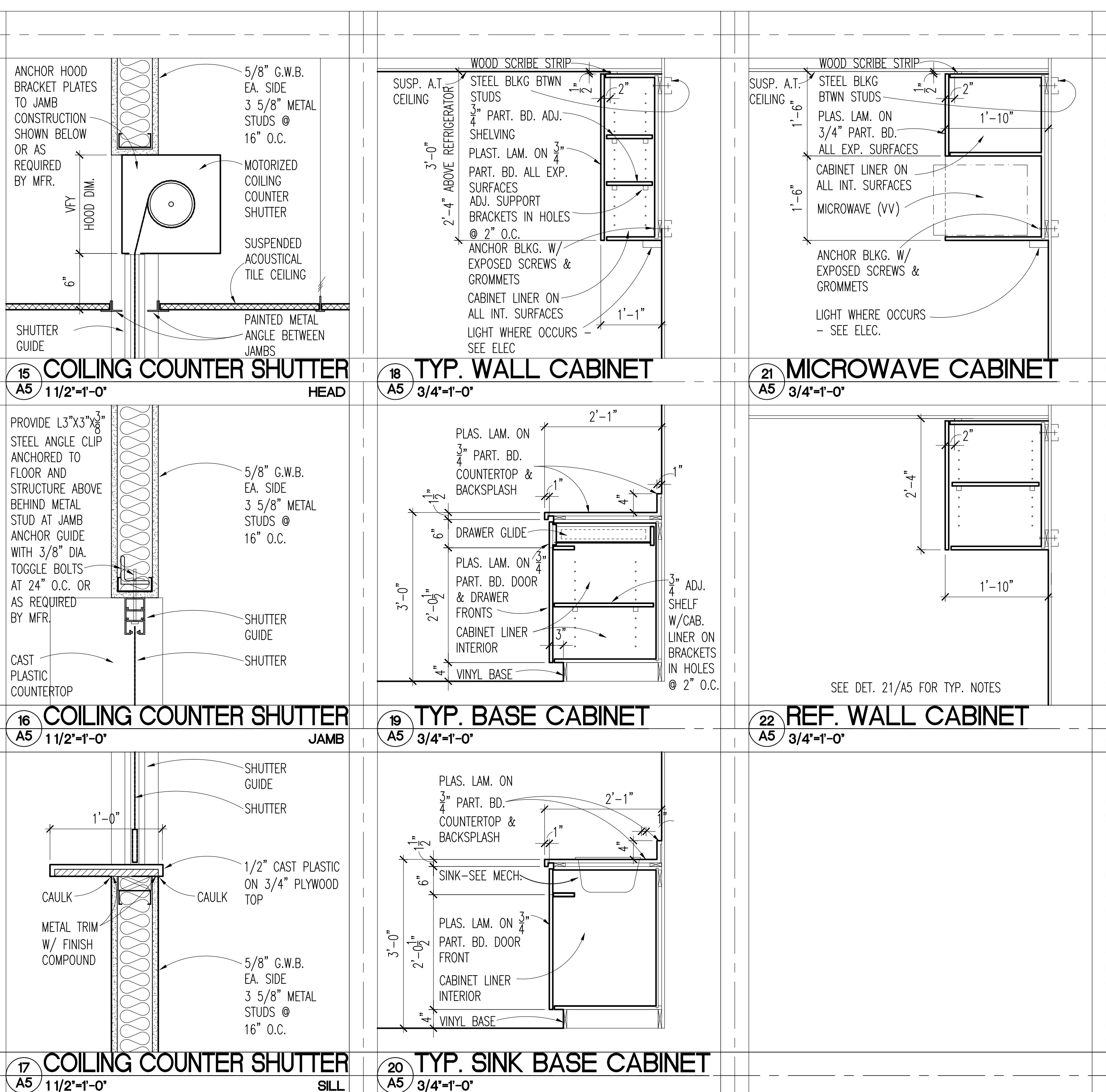
12 SIM. STOR. 2C-28  
A5 1/4"-1'-0"

13 SIM. 2C-29  
A5 1/4"-1'-0"

14 TYPICAL PROCEDURE  
A5 1/4"-1'-0"

**ELEVATION NOTES LEGEND**

- NOTE: PROVIDE BACKING AS REQUIRED FOR ALL WALL MOUNTED ITEMS.
- 1 BASE. SEE ROOM FINISH SCHEDULE.
  - 2 CERAMIC WALL TILE.
  - 3 WALL PROTECTION. TERMINATE AT LOCATIONS ON PLAN AND ELEV.
  - 4 PLASTIC LAMINATE COUNTERTOP (CC)
  - 5 PLASTIC LAMINATE WALL CABINET (CC)
  - 6 PLASTIC LAMINATE BASE CABINET (CC)
  - 7 STAINLESS STEEL COUNTERTOP; INTEGRAL SINK WHERE OCCURS (CC)
  - 8 STAINLESS STEEL CABINET UNIT; PROVIDE FILLERS AS REQ'D (CC)
  - 9 1/2" CAST PLASTIC TOP (CC)
  - 10 MOTORIZED COILING COUNTER SHUTTER (CC) SEE DETAILS 15/A5, 16/A5, AND 17/A5.
  - 11 METAL COAT RACK (CC)
  - 12 COAT HOOK (CC)
  - 13 MODULAR FURNISHINGS (VV)
  - 14 SEATING (VV)
  - 15 GRAB BAR, SIZE AS INDICATED (CC)
  - 16 TOILET PAPER DISPENSER (CC)
  - 17 SANITARY WASTE RECEPTACLE (CC)
  - 18 MIRROR, SIZE AS INDICATED (CC)
  - 19 PAPER TOWEL DISPENSER (CC)
  - 20 FEMINE PRODUCT DISPENSER (CC)
  - 21 REFRIGERATOR (VV)
  - 22 MICROWAVE (VV)
  - 23 SOAP DISPENSER (VC)
  - 24 MONITOR (VV) AND BRACKET (CC)
  - 25 GAS CYLINDER (VV) AND WALL BRACKET ANCHORED TO STUDS WITH 3/16" BY 5/8" SELF-TAPPING SCREWS (CC)
  - 26 COMPUTER AND WALL BRACKET (VV)
  - 27 EXAM TABLE (VV)
  - 28 STRETCHER (VV)
  - 29 SUPPLY CART (VV)
  - 30 MOBILE CABINET (VV)
  - 31 SINK; SEE MECHANICAL DRAWINGS.
  - 32 WATER CLOSET; SEE MECHANICAL DRAWINGS.
  - 33 MEDICAL GAS OUTLET; SEE MECHANICAL DRAWINGS.
  - 34 EYE WASH; SEE MECHANICAL DRAWINGS.
  - 35 POWER/DATA OUTLET; SEE ELECTRICAL DRAWINGS.
  - 36 PHONE OUTLET; SEE ELECTRICAL DRAWINGS.
  - 37 NURSE CALL; SEE ELECTRICAL DRAWINGS.
  - 38 LIGHT FIXTURE; SEE ELECTRICAL DRAWINGS.
  - 39 OMNICELL (VV)
  - 40 CYSTO TOWER (VV)
  - 41 HAMPER OR WASTE CONTAINER (VV)
  - 42 I.V. POLE (VV)



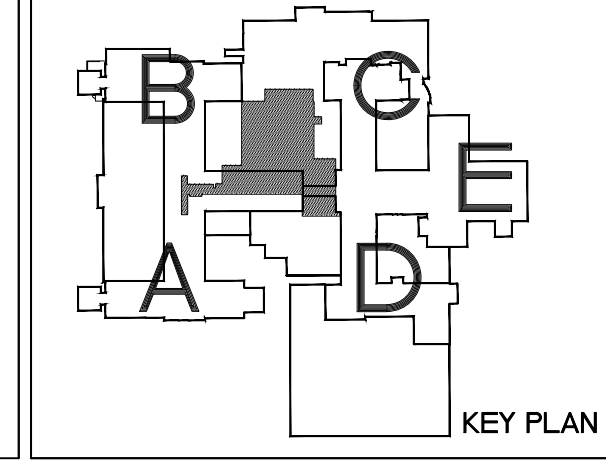
SECOND FLOOR COLOR LOCATION PLAN  
NO SCALE

**VA**  
Dept. of Veterans Affairs  
Health Care System  
2101 Elm Street North  
Fargo, ND 58102

**MAGE GROUP**  
MAGE GROUP INC.  
403 CENTER AVENUE, SUITE 300  
MOORHEAD, MN 56560

**TRIO ENVIRONMENTAL, Environmental Consultants**  
**OSBERMILLER NELSON ENGINEERING, Mechanical Engineers**  
**MEN ENGINEERING, Electrical Engineers**

I hereby certify that this plan specification, or report was prepared by me or under my direct supervision, and that I am duly Registered Architect under the laws of the State of North Dakota.  
*Russell Murray*  
Date: 07/29/16 Reg. No. 378



Drawing Title <b>INTERIOR ELEVATIONS, DETAILS, AND COLOR LOCATION PLAN</b>		Project Title <b>RENOVATE 2ND FLOOR, BLDG 46 FOR MEDICAL SPECIALTIES</b>		Date <b>JULY 29, 2016</b>
VA Project No. <b>437-14-110</b>	Contract No. <b>VA263-P-1217</b>	Designed By <b>RM</b>	Checked By <b>RM</b>	Scale <b>AS SHOWN</b>
Building No. <b>46</b>	AutocAD File Name <b>Interior_Elevations.dwg</b>	Drawn By <b>AH</b>	Location <b>FARGO VA HEALTH CARE SYSTEM FARGO, ND</b>	Drawing No. <b>A5</b>
				Dwg. 8 of 36

