

DEMOLITION NOTES

GENERAL

- REFER TO MECHANICAL DRAWINGS FOR RELATED DEMOLITION OF MECHANICAL CONSTRUCTION.
- REFER TO ELECTRICAL DRAWINGS FOR RELATED DEMOLITION OF ELECTRICAL CONSTRUCTION.
- MAINTAIN ACCESS TO ALL EXITS DURING CONSTRUCTION.
- PATCH TO MATCH SPRAY-ON FIREPROOFING DAMAGED OR REMOVED FROM STRUCTURAL MEMBERS DURING DEMOLITION.
- PATCH ABANDONED PARTITION AND FURRING OPENINGS AND PENETRATIONS RELATED TO MECHANICAL AND ELECTRICAL DEMOLITION.
- PROTECT SURROUNDING ROOMS NOT UNDER CONSTRUCTION FROM DUST AND DEBRIS. THESE ROOMS ARE NOT TO BE USED BY ANY CONTRACTOR FOR ANY PURPOSE.
- FURNISHINGS OR EQUIPMENT IN AREA OF WORK ARE TO BE REMOVED AND TURNED OVER TO OWNER, UNLESS NOTED OTHERWISE. DISPOSE OF ALL ITEMS NOT WANTED BY OWNER.
- WORK TIME RESTRICTIONS:
 - A PART OF CORRIDOR TO REMAIN OPEN AT ALL TIMES.
 - ACCESS TO ROOMS MUST BE MAINTAINED AT ALL TIMES (EXCEPT POSSIBLY OUTSIDE BUSINESS HOURS WHEN WORK COULD BE COORDINATED AND COMPLETED).
 - WORK MUST BE COORDINATED WITH THE IMMEDIATE REINSTALLATION OF FINISHES SO CORRIDOR DOES NOT REMAIN IN AN UNFINISHED STATE.
- MAINTAIN NEGATIVE AIR PRESSURE IN AREAS OF WORK DURING DEMOLITION.

NOTE SYMBOLS LEGEND

- 1 DEMOLITION AS INDICATED
- 2 REMOVE PARTITION OR FURRING AS INDICATED; LEAD-LINED WHERE INDICATED WITH RATING SYMBOL, SEE RATING LEGEND.
- 3 REMOVE DOOR, FRAME AND HARDWARE. LEAD-LINED WHERE INDICATED WITH RATING SYMBOL, SEE RATING LEGEND.
- 4 REMOVE HOLLOW METAL FRAME AND GLAZING. LEAD-LINED WHERE INDICATED WITH RATING SYMBOL, SEE RATING LEGEND.
- 5 REMOVE WALL PROTECTION.
- 6 REMOVE MILLWORK.
- 7 REMOVE PLUMBING ACCESSORIES.
- 8 REMOVE EXPANSION JOINT COVER.
- 9 REMOVE CART LIFT SYSTEM IN ITS ENTIRETY. SEE NOTE ON SHEET A2 FOR INSTALLATION OF INFILL FLOOR PRIOR TO DEMOLITION OF 2-HOUR WALL OR PROVIDE 2-HOUR CONSTRUCTION BARRIER.
- 10 REMOVE TOILET PARTITION.
- 11 REMOVE FURNISHINGS, STORAGE OR EQUIPMENT; TURN OVER TO OWNER. DISPOSE OF ALL ITEMS NOT WANTED BY OWNER.
- 12 REMOVE INTERIOR WINDOW SILL.

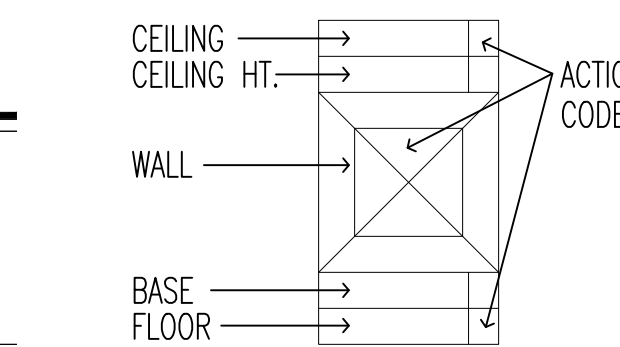
FINISH ABBREVIATIONS

ACT - ACOUSTIC CEILING TILE	P - PAINT
CPT - CARPET	PL - PLASTER
CT - CERAMIC TILE	PT - PORCELAIN TILE
CMU - CONCRETE MASONRY UNIT	RES - RESINOUS
CONC - EXPOSED CONCRETE	SV - SHEET VINYL
EXPS - EXPOSED STRUCTURE	TER - TERRAZZO
GWB - GYPSUM WALL BOARD	VIN - VINYL BASE
LAM - LAMINATE	VCT - VINYL COMPOSITE TILE
MOD - MODULAR WALL	WVC - VINYL WALL COVERING
MS - METAL SLAT	

NOTE: REMOVE ANY TERRAZZO COVE BASE WHERE PARTITION, FURRING OR FLOORING IS BEING REMOVED; MAY BE HIDDEN UNDERNEATH FLOOR COVERING OR WALL BASE. PATCH VOID LEFT BY REMOVAL.

ACTION CODE

- EXISTING FINISH REMAINS - PATCH TO MATCH WHERE DAMAGED BY DEMOLITION.
- REMOVE WALL FINISH ONLY. EXISTING PARTITION REMAINS.
- EXISTING PARTITION OR FURRING TO BE REMOVED AT AREAS DESIGNATED AS DASHED LINES.
- REMOVE EXISTING FINISH.

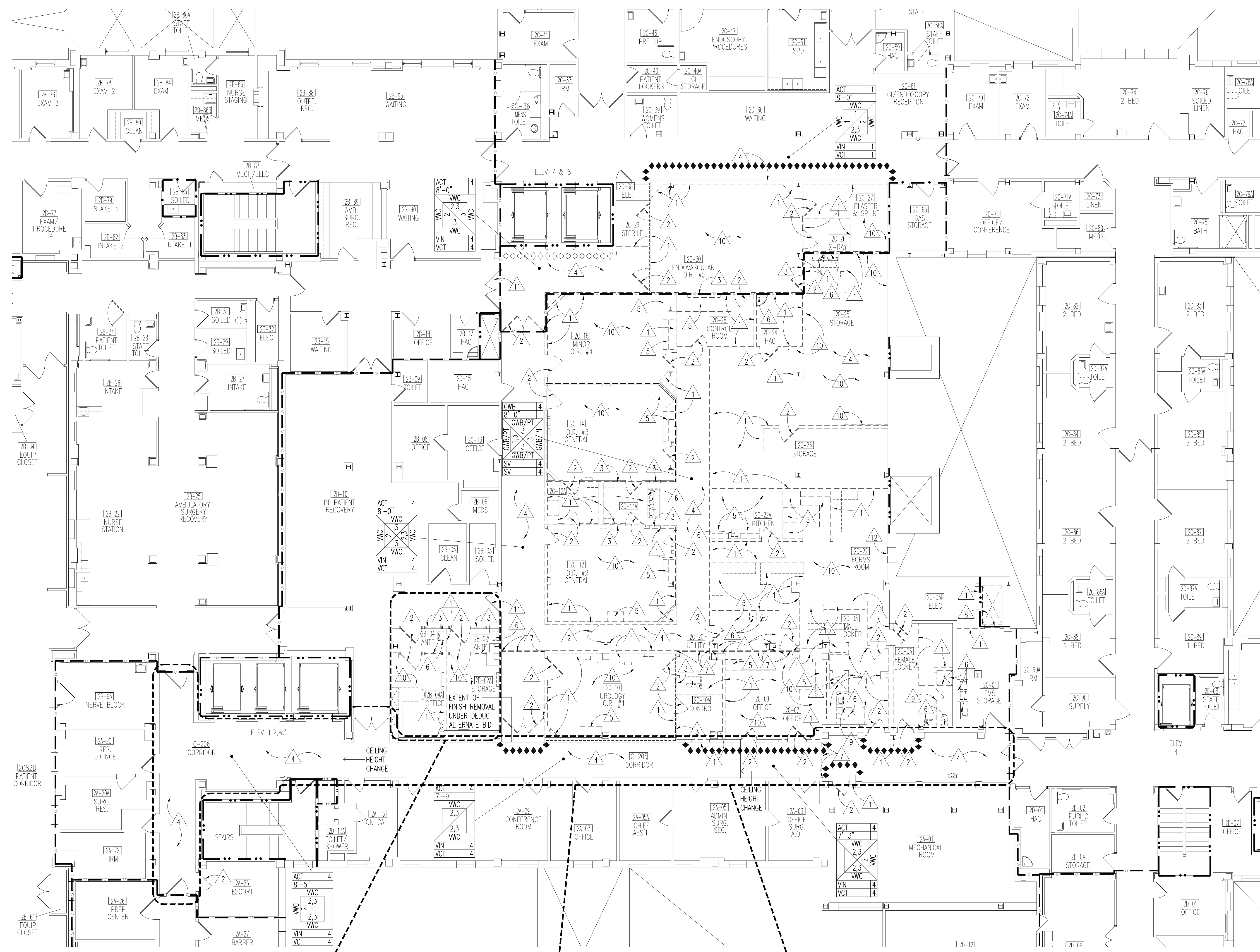


RATING LEGEND

GENERAL

- PROVIDE INDICATED RATING AT NEW PARTITIONS.
- UPGRADE EXISTING PARTITIONS TO PROVIDE INDICATED RATING.
- CONFIRM & MAINTAIN INDICATED RATING AT EXISTING PARTITIONS AFFECTED BY REMODELING.

- ONE HOUR FIRE
- TWO HOUR FIRE
- ONE HOUR FIRE/SMOKE
- TWO HOUR FIRE/SMOKE
- NON-COMBUSTIBLE TEMPORARY CONSTRUCTION BARRIER. PROVIDE CONSTRUCTION ACCESS DOORS IN BARRIER AT LOCATIONS TO BE DETERMINED BY VA AND CONTRACTOR.
- ◊◊◊◊◊◊◊◊ CONSTRUCTION DUST BARRIER
- LEAD RADIATION SHIELDING



OMIT DEMOLITION UNDER DEDUCT ALTERNATE BID

COORDINATE WITH VA TO MAINTAIN STAFF ACCESS AND INFECTION CONTROL AT ALL TIMES DURING CORRIDOR WORK

OMIT CORRIDOR FINISHES REMOVAL UNDER DEDUCT ALTERNATE BID

SECOND FLOOR DEMOLITION PLAN
1/8"=1'-0"

2B-02 GWB 7-11 1/2 GWB/P 4 SV 4 VCT 4	2B-02A GWB 7-11 1/2 GWB/P 4 SV 4 VCT 4	2B-04 GWB 8-0 GWB/P 4 SV 4 VCT 4	2B-04A GWB 7-11 1/2 GWB/P 4 SV 4 VCT 4
2C-01 ACT 8-0 GWB/P 4 VIN 4 VCT 4	2C-03 ACT/GWB 7-6 CT/GWB/P 4 VIN 4 VCT 4	2C-03B EXPS GWB/P 4 VIN 4 VCT 4	2C-05 ACT/GWB 7-6 CT/GWB/P 4 VIN 4 VCT 4
2C-07 GWB 7-9 GWB/P 4 VIN 4 VCT 4	2C-09 ACT 8-0 GWB/P 4 VIN 4 VCT 4	2C-10 GWB 9-3 GWB/P 4 VIN 4 VCT 4	2C-10A GWB 8-0 GWB/P 4 RES 4 VCT 4
2C-12 GWB 9-4 GWB/P 4 RES 4 VCT 4	2C-12A GWB 9-4 GWB/P 4 RES 4 VCT 4	2C-14 GWB 9-4 GWB/P 4 RES 4 VCT 4	2C-14A GWB 9-4 GWB/P 4 RES 4 VCT 4
2C-16 GWB 9-4 GWB/P 4 RES 4 VCT 4	2C-20 GWB 9-4 GWB/P 4 RES 4 VCT 4	2C-22 ACT 8-0 GWB/P 4 VIN 4 VCT 4	2C-22A ACT 8-0 GWB/P 4 VIN 4 VCT 4
2C-23 ACT 8-0 GWB/P 4 SV 4 VCT 4	2C-24 ACT 8-0 GWB/P 4 SV 4 VCT 4	2C-25 ACT 8-0 GWB/P 4 SV 4 VCT 4	2C-26 ACT 8-0 GWB/P 4 SV 4 VCT 4
2C-27 ACT 8-0 GWB/P 4 RES 4 VCT 4	2C-28 ACT 8-0 GWB/P 4 RES 4 VCT 4	2C-29 ACT 8-0 GWB/P 4 RES 4 VCT 4	2C-30 GWB/ACT 9-0 9-6 GWB/P 4 RES 4 VCT 4

I:\Server Project Data\1304_Frago VA Health Care System\10_Bldg_46_2nd_Floor\2001\Plan_Second.dwg, No. 22, 2016 - 10:13am

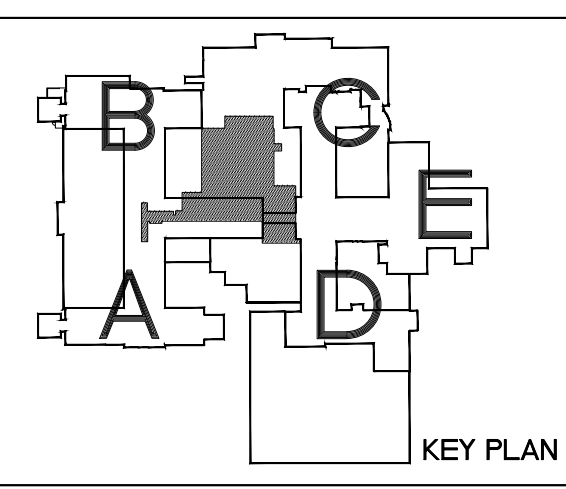
Dept. of Veterans Affairs
Health Care System
2101 Elm Street North
Fargo, ND 58102

MAGE GROUP INC.
403 CENTER AVENUE, SUITE 300
MOORHEAD, MN 56560

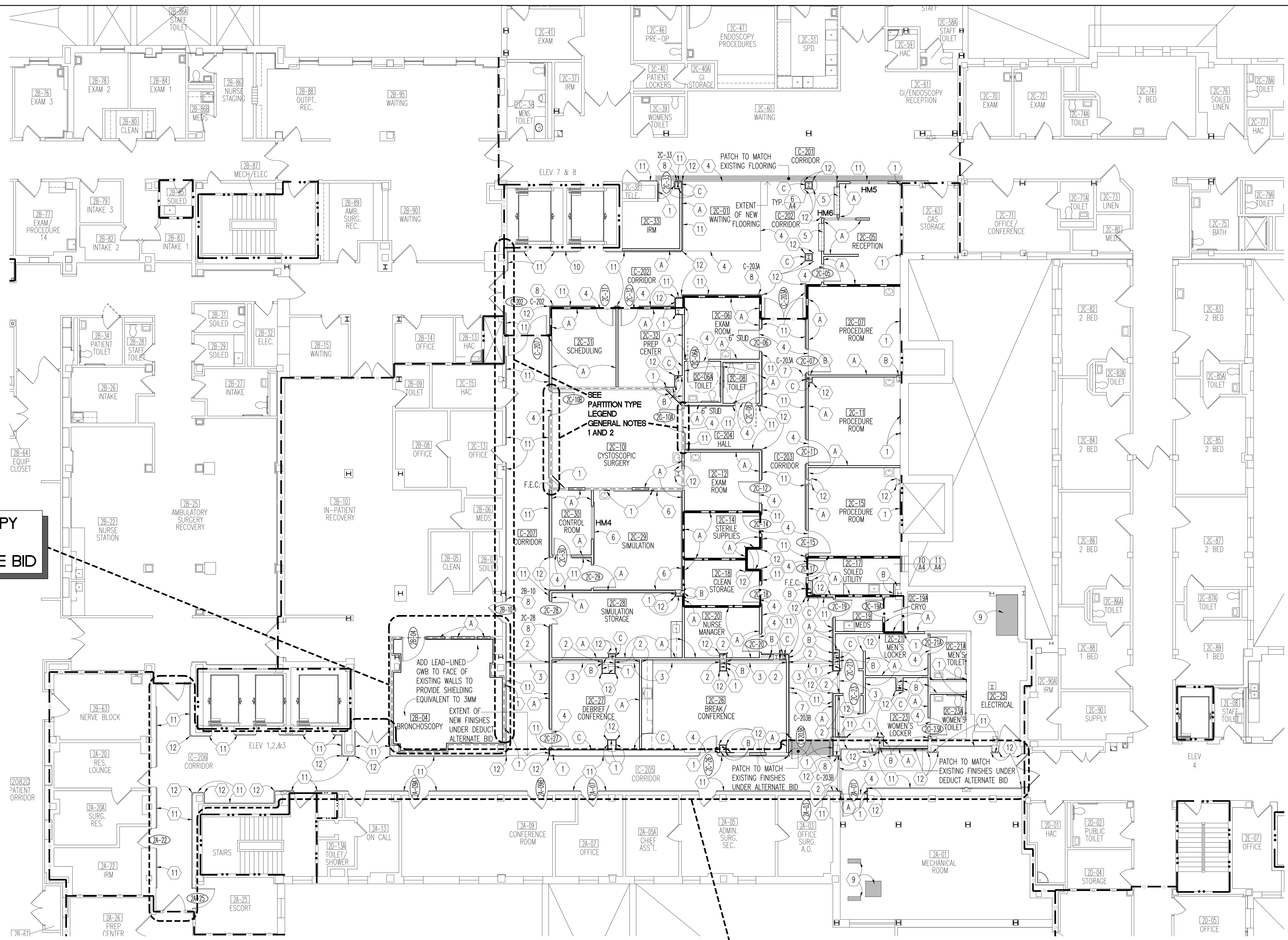
MAGE GROUP INC. Architecture & Interiors
TRIO ENVIRONMENTAL, Environmental Consultants
OSBERMILLER NELSON ENGINEERING, Mechanical Engineers
MEN ENGINEERING, Electrical Engineers

I hereby certify that this plan specification, or report was prepared by me or under my direct supervision, and that I am duly Registered Architect under the laws of the State of North Dakota.

Russell Murray
Date: 07/29/16 Reg. No. 378



Drawing Title SECOND FLOOR DEMOLITION PLAN		Project Title RENOVATE 2ND FLOOR, BLDG 46 FOR MEDICAL SPECIALTIES		Date JULY 29, 2016
VA Project No. 437-14-110	Contract No. VA263-P-1217 VA263-C	Designed By RM	Checked By RM	Drawn By AH
Building No. 46	AutocAD File Name Plan_Second.dwg	Location FARGO VA HEALTH CARE SYSTEM FARGO, ND	Scale 1/8"=1'-0"	Drawing No. A1
Dwg. 3 of 36				Department of Veterans Affairs



- ### REMODELING NOTES
- GENERAL
- REFER TO MECHANICAL DRAWINGS FOR RELATED MECHANICAL CONSTRUCTION.
 - REFER TO ELECTRICAL DRAWINGS FOR RELATED ELECTRICAL CONSTRUCTION.
 - PATCH TO MATCH SPRAY-ON FIREPROOFING DAMAGED OR REMOVED FROM STRUCTURAL MEMBERS DURING REMODELING.
 - PATCH EXISTING FINISHES AS REQUIRED AT INTERSECTIONS OF NEW AND EXISTING FINISHES.
 - WORK TIME RESTRICTIONS:
 - PART OF CORRIDOR TO REMAIN OPEN AT ALL TIMES.
 - ACCESS TO ROOMS MUST BE MAINTAINED AT ALL TIMES (EXCEPT POSSIBLY OUTSIDE BUSINESS HOURS WHEN WORK COULD BE COORDINATED AND COMPLETED).
 - WORK MUST BE COORDINATED WITH THE IMMEDIATE REINSTALLATION OF FINISHES SO CORRIDOR DOES NOT REMAIN IN AN UNFINISHED STATE.
 - MAINTAIN NEGATIVE AIR PRESSURE IN AREAS OF WORK DURING REMODELING.

- ### NOTE SYMBOLS LEGEND
- PATCH EXISTING WALL OR COLUMN AS REQUIRED TO RECEIVE NEW FINISH.
 - WALL EXPANSION JOINT COVER; SEE DETAIL 7/A4.
 - FLOOR EXPANSION JOINT COVER; SEE DETAIL 8/A4.
 - FLOORING TRANSITION; SEE DETAIL 3/A4.
 - MOTORIZED OVERHEAD COILING COUNTER SHUTTER ABOVE; SEE DETAILS 15/A5, 16/A5, AND 17/A5.
 - PVC SHEET WALL PROTECTION MAINSCOT WITH CRASH RAIL TOP AND BOTTOM; 4'-4" AFF TO TOP OF TOP RAIL.
 - DOOR OPERATOR ACTIVATION TAP PLATE; DOOR BEING OPERATED INDICATED BY DOOR NUMBER. SEE ELECTRICAL.
 - CARD READER (ACTIVATES DOOR OPERATOR WHERE OCCURS; DOOR NUMBER AS INDICATED). SEE ELECTRICAL.
 - INFILL FLOOR AT ABANDONED OPENING; SEE DETAILS 1/A2 AND 2/A2. INSTALL INFILL FLOOR PRIOR TO REMOVAL OF 2-HOUR RATED PARTITION OR PROVIDE 2-HOUR CONSTRUCTION BARRIER.
 - SEE SPECIFICATIONS FOR REPLACEMENT OF ENTRANCE KEY SWITCH WITH PUSH BUTTONS.
 - HANDRAIL & GUARDRAIL; SEE DETAIL 1/A4.
 - CORNERGUARD; SEE DETAIL 2/A4.

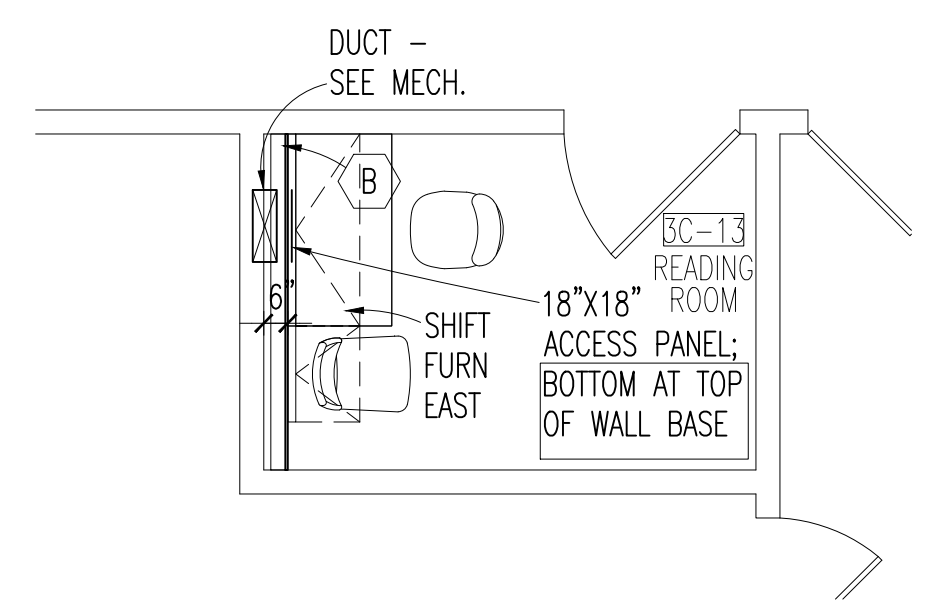
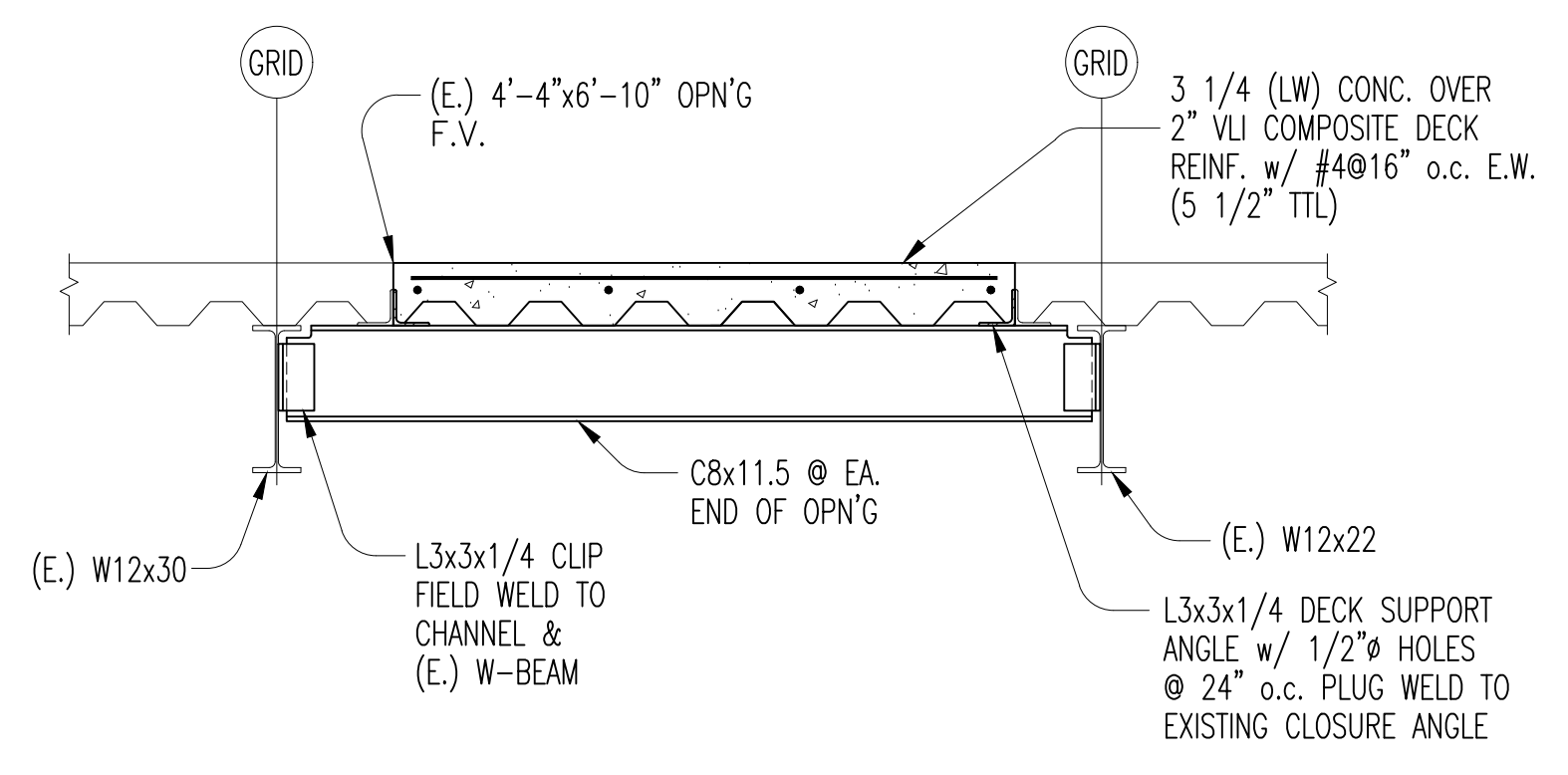
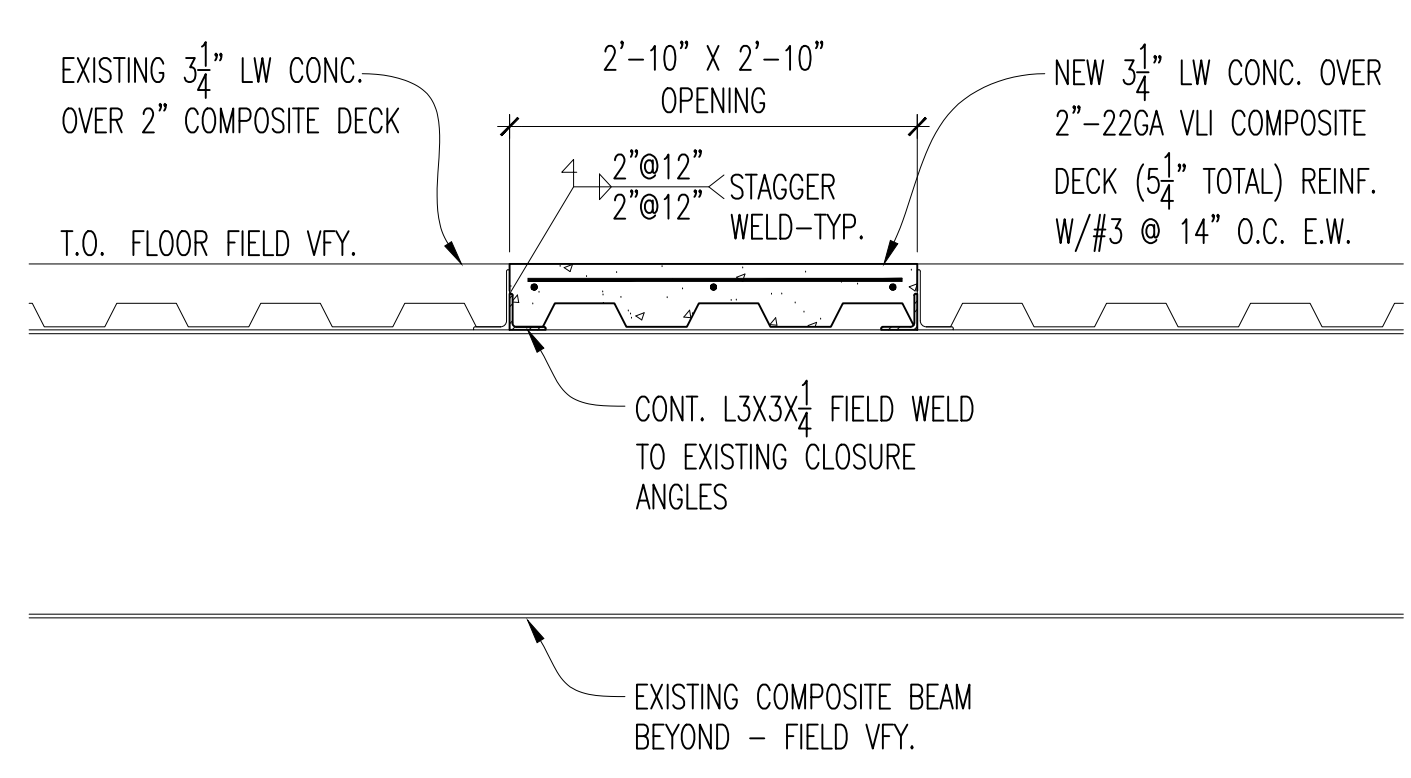
- ### PARTITION TYPE LEGEND
- GENERAL
- FIELD VERIFY RETAINED EXISTING CORRIDOR WALLS AND EXISTING WALLS BECOMING CORRIDOR WALLS; EXTEND ANY FOUND NOT EXTENDING TO DECK ABOVE.
 - PROVIDE FIRE/SMOKE SEAL (PERIMETER & PENETRATIONS) WHERE RATED WALLS ARE INDICATED; AND AT CORRIDOR WALLS, INCLUDING RETAINED EXISTING CORRIDOR WALLS AND EXISTING WALLS BECOMING CORRIDOR WALLS. PROVIDE TWO 5/8" TYPE 'X' LAYERS GWB EA. SIDE WHERE 2 HOUR RATING IS INDICATED.
 - PROVIDE ACOUSTICAL SEAL AT INTERSECTION WITH DECK OR WALLS, AND DUCT, PIPE & CONDUIT PENETRATIONS, TYPICAL.
 - PROVIDE 6" STUD WHERE INDICATED.
 - CERAMIC WALL TILE: PROVIDE CEMENT BACKER BOARD IN LIEU OF SPECIFIED GWB AT ALL CERAMIC WALL TILE.
 - PLUMBING WALL/WET LOCATIONS: WATER RESISTANT GWB IN LIEU OF SPECIFIED GWB ENTIRE ROOM WHERE WET CONDITIONS EXIST.
- A) GWB/METAL STUD PARTITION, 4-7/8" THICK; TYPICAL UNLESS INDICATED OTHERWISE. 5/8" TYPE 'X' GWB EA. SIDE OF 3-5/8" METAL STUD AT 16" O.C. WITH FULL THICKNESS ROCK WOOL SOUND ATTENUATION IN CAVITY. EXTEND TO UNDERSIDE OF DECK ABOVE.
- B) CHASE OR FURRED WALL, 5/8" TYPE 'X' GWB ON EXPOSED FACE OF 3-5/8" METAL STUDS AT 16" O.C. WITH FULL THICKNESS ROCK WOOL SOUND ATTENUATION/INSULATION IN CAVITY. EXTEND TO UNDERSIDE OF DECK OR GWB SOFFIT ABOVE. PROVIDE VAPOR BARRIER BEHIND GWB AND 1" MINERAL WOOL PANEL APPLIED TO MASONRY OR CONCRETE BEHIND STUDS AT EXTERIOR WALLS.
- C) FURRED WALL OR COLUMN, 5/8" TYPE 'X' FIRE RATED GYPSUM BOARD ON EXPOSED FACE OF 1-5/8" METAL STUDS AT 16" O.C. EXTEND TO UNDERSIDE OF DECK OR GWB SOFFIT ABOVE.

- ### RATING LEGEND
- GENERAL
- PROVIDE INDICATED RATING AT NEW PARTITIONS.
 - UPGRADE EXISTING PARTITIONS TO PROVIDE INDICATED RATING.
 - CONFIRM & MAINTAIN INDICATED RATING AT EXISTING PARTITIONS AFFECTED BY REMODELING.
- • — ONE HOUR FIRE
 — • • — TWO HOUR FIRE
 — ○ — ONE HOUR FIRE/SMOKE
 — ○ • — TWO HOUR FIRE/SMOKE
 - - - - - 3MM LEAD RADIATION SHIELDING OR EQUIVALENT AT WALLS OR OPENINGS TO 7'-0" A.F.F. PROVIDE TESTING AND CERTIFICATION BY A REGISTERED MEDICAL PHYSICIST.

OMIT BRONCHOSCOPY REMODEL UNDER DEDUCT ALTERNATE BID

OMIT CORRIDOR FINISHES REMODEL UNDER DEDUCT ALTERNATE BID

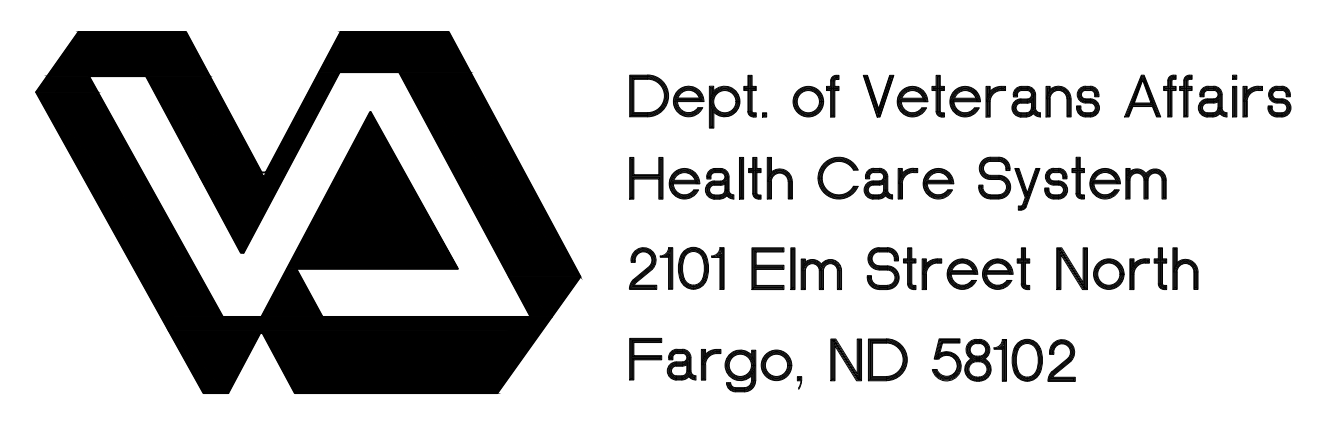
SECOND FLOOR REMODELING PLAN
1/8"-1'-0"



1 MECHANICAL OPENING FLOOR INFILL
3/4"-1'-0"

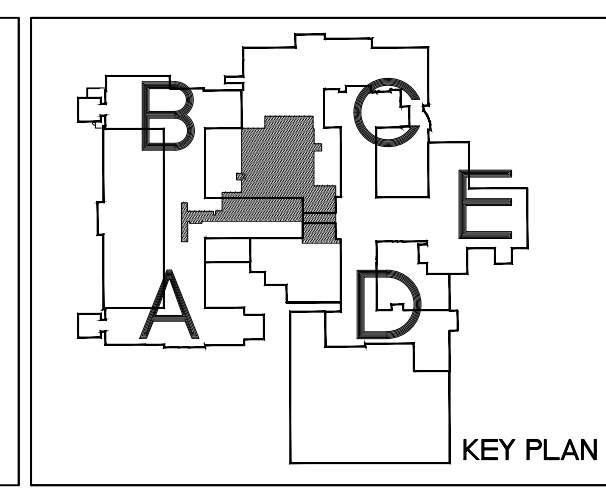
2 CART LIFT OPENING FLOOR INFILL
3/4"-1'-0"

READING ROOM 3C-13
1/4"-1'-0" OMIT UNDER DEDUCT ALT. BID



MAGE GROUP INC. Architecture & Interiors
 TRIO ENVIRONMENTAL, Environmental Consultants
 OBERMILLER NELSON ENGINEERING, Mechanical Engineers
 MEN ENGINEERING, Electrical Engineers

I hereby certify that this plan specification, or report was prepared by me or under my direct supervision, and that I am duly Registered Architect under the laws of the State of North Dakota.
Russ Meyer
 Date: 07/29/16 Reg. No. 378



Drawing Title SECOND FLOOR AND READING ROOM 3C-13 REMODELING PLANS		Project Title RENOVATE 2ND FLOOR, BLDG 46 FOR MEDICAL SPECIALTIES		Date JULY 29, 2016
VA Project No. 437-14-110	Contract No. VA263-P-1217	Designed By RM	Checked By RM	Scale AS SHOWN
Building No. 46	AutoCAD File Name Plan_Second.dwg	Drawn By AH	Localize FARGO VA HEALTH CARE SYSTEM FARGO, ND	Drawing No. A2
				Dwg. 4 of 36

I:\Server\Project\Draw\13041\Fargo_VA_Health_Care_System\10_Bldg_46_2nd_Floor\02001\Plan_Second.dwg, Nov 22, 2016 - 10:13am