

GENERAL NOTES

1. ALL PENETRATIONS THROUGH FIRE-RATED WALLS OR FLOORS TO PRESERVE RATING.
2. ALL COMMUNICATIONS CABLING INSTALLED IN AREAS WITH HARD CEILINGS SHALL BE INSTALLED IN CONDUIT.
3. ANY NEW DEVICE LOCATIONS ON EXISTING MASONRY WALLS WHICH ARE NOT BEING FURRED OUT SHALL BE SERVED USING DECORATIVE METALLIC SURFACE RACEWAY. PAINTED TO MATCH WALLS.
4. PROVIDE TOUCH-UP PAINTING TO MATCH EXISTING WALL AT ANY EXISTING COMMUNICATIONS JACK LOCATIONS WHERE SURFACE RACEWAY IS REMOVED IN THE PROCESS OF REPLACING CABLING.

KEYED NOTES

301. PROVIDE (3) 4" EMT CONDUITS FROM EXISTING IT ROOM BELOW 349B TO EXISTING CABLETRAY FOR REPLACEMENT RESPIRATORY CARE CABLES AND 4TH FLOOR CABLES. PROVIDE PULLSTRING IN EMPTY CONDUIT. COORDINATE CORE-DRILLING FOR CONDUITS WITH EXISTING STRUCTURE AND CONDITIONS.
302. EXISTING ROBOTIC DELIVERY SYSTEM ANTENNA TO BE REINSTALLED IN NEW CEILING.
303. DURESS ALARM ANTENNA TO BE REINSTALLED BY VA.
304. EXISTING PA SYSTEM SPEAKER TO BE CLEANED AND RE-INSTALLED IN NEW CEILING.
305. FIRE-RATED POKE THROUGH COMBINATION POWER AND COMMUNICATIONS UNIT. SERVE FROM 2ND FLOOR.
306. PROVIDE (3) 4" EMT CONDUITS FROM EXISTING IT ROOM BELOW 349B TO NEW CABLETRAY FOR RENOVATED AREA. PROVIDE PULLSTRING IN EMPTY CONDUIT. COORDINATE CORE-DRILLING FOR CONDUITS WITH EXISTING STRUCTURE AND CONDITIONS.
307. PROVIDE 12" WIDE X 2" DEEP WIRE BASKET TYPE CABLETRAY. COORDINATE ROUTE WITH MECHANICAL AND PLUMBING EQUIPMENT WHICH HAS RIGHT-OF-WAY.
308. PROVIDE DATA JACK ON WALL FOR CAMERA AS DIRECTED BY SMARTBOARD SERVICE CONTRACTOR. PROVIDE JUNCTION BOXES AND CONDUIT IN WALL BEHIND SMARTBOARD AND AT CONTROL TERMINAL AS DIRECTED BY SMARTBOARD SERVICE CONTRACTOR FOR ALL SMARTBOARD, MICROPHONE, AND SPEAKER INSTALLATION TO BE BY SUBCONTRACTOR BETWEEN ELECTRICAL CONTRACTOR AND OWNER'S CURRENT SMARTBOARD SERVICE CONTRACTOR.
309. REINSTALL WALL MOUNTED DATA RACK AND PATCH PANELS REMOVED FROM OLD IT CLOSET IN EXISTING IT CLOSET ON 2ND FLOOR. PROVIDE ADDITIONAL PATCH PANELS TO ACCOMMODATE NEW COMMUNICATIONS CABLING.
310. REPLACE ALL PHONE AND DATA CABLING IN RESPIRATORY CARE AREA IN KIND Routed to 2ND FLOOR IT CLOSET. UTILIZING NEW 4" CONDUIT PATHS. COORDINATE WITH VA IT DEPARTMENT. PROVIDE TERMINATIONS AT BOTH ENDS AND TESTING. ALL CABLES REPLACEMENT WORK IS TO BE DONE DURING NON-BUSINESS HOURS TO ALLOW AREA TO REMAIN IN OPERATION. COORDINATE WITH VA. NEW CABLE COUNTS SHOWN MAY VARY COMPARED TO EXISTING WORK. PROVIDE FILLER PLUGS TO MATCH FACEPLATE FOR LOCATIONS WITH DECREASED COUNTS.
311. PROVIDE NEW JBL STUDIO 281C RECESSED SPEAKER WITH BACKBOX AND WHITE GRILLE FOR CHAPEL SOUND SYSTEM. PROVIDE #16 SPEAKER WIRE BACK TO AV EQUIPMENT ROOM WITH 15' SLACK CABLE FOR CONNECTION BY OWNER TO OWNER-PROVIDED AMPLIFIER.
312. PROVIDE SINGLE FEMALE XLR MICROPHONE JACK IN WALL WITH 2-CONDUCTOR #22 STRANDED TWISTED SHIELDED COPPER SOUND CABLE BACK TO AV EQUIPMENT ROOM WITH 15' SLACK CABLE FOR CONNECTION BY OWNER TO OWNER-PROVIDED EQUIPMENT. TERMINATE CABLE WITH MALE XLR CONNECTOR.
313. PROVIDE JUNCTION BOX WITH 1" CONDUIT TO ROUTE EXISTING SIGNAL CABLING FOR CHAPEL TV BROADCAST FROM CEILING SPACE TO AV EQUIPMENT. INSTALL EXISTING CABLING INTO CONDUIT AND BOX. OWNER TO PROVIDE CONNECTION TO AV EQUIPMENT.
314. PROVIDE NURSE CALL SWITCH WITH CABLING TO EXISTING NURSE CALL SYSTEM IN 3 SOUTH. CABLING AND SWITCH TO MATCH AND BE COMPATIBLE WITH EXISTING RAULAND SYSTEM. COORDINATE EXISTING SYSTEM CONNECTION WITH OWNER.
315. PROVIDE (2) JUNCTION BOXES IN WALL EACH WITH 1" CONDUIT TO CEILING SPACE FOR AV SYSTEM CABLING BY OWNER.
316. ALL EXISTING DATA AND PHONE CABLING WITHIN BORDERED AREA TO BE REPLACED AND REROUTED TO 2ND FLOOR IT CLOSET. REPLACE CABLING WITH 4 CABLES PER JACK LOCATION PER VA STANDARDS EVEN THOUGH EXISTING LOCATIONS MAY HAVE FEWER CABLES. PROVIDE NEW JACKS AND FACEPLATES TO SUIT. PROVIDE TERMINATIONS AT BOTH ENDS AND TESTING.
317. IN ADDITION TO EXISTING CONDUIT TO 3RD FLOOR CEILING SPACE, PROVIDE (1) NEW 4" CONDUIT TO 3RD FLOOR CEILING SPACE ALONG BACK WALL OF STORAGE ROOM. COORDINATE LOCATIONS WITH EXISTING CONDITIONS AND EQUIPMENT IN 3RD FLOOR CEILING. PROVIDE VERTICAL CABLE MANAGEMENT UP STORAGE ROOM WALL FROM FLOOR SLEEVE TO WALL SLEEVE.
318. PROVIDE SINGLE DATA CABLE TO WIRELESS ACCESS POINT FROM 2ND FLOOR IT CLOSET.
319. PROVIDE BOX ON WALL ADJACENT TO PODIUM AT 48" AFF. WITH CONDUIT AND USB CABLE BACK TO AV EQUIPMENT ROOM. PROVIDE USB JACK IN COVERPLATE OF BOX AND USB TERMINATION AT OTHER END WITH 15' SLACK CABLE.
320. PROVIDE EMPTY JUNCTION BOX HIGH IN WALL WITH 1" TO AV ROOM FOR SIGNAL CABLING BY VA.
321. PROVIDE 4" CONDUIT SLEEVE THROUGH WALL ABOVE CEILING FOR NEW CABLING.
322. EXISTING AND NEW CONDUITS FOR CABLING TO FOURTH FLOOR.
323. NEW COMMUNICATIONS JACK LOCATION TO BE SERVED WITH DECORATIVE SURFACE RACEWAY OR FISHED THROUGH WALL AT CONTRACTOR'S CHOICE.
324. REMOVE EXISTING THROUGH-FLOOR COMMUNICATIONS SERVICE AND BOX AND CUT OFF CONDUIT FLUSH WITH FLOOR.
325. TV SERVICE THROUGH DATA JACK. VERIFY SOURCE AND REPLACE IF SERVED FROM DATA CLOSET BEING DEMOLISHED.
326. PROVIDE NEW 100-PAIR TELEPHONE TRUNK CABLE BETWEEN THIS ROOM AND ROOM 423. APPROXIMATELY 400'. REPLACE EXISTING CABLE. COORDINATE REPLACEMENT WITH VA IT DEPARTMENT. TERMINATE CABLE AT BOTH ENDS PER IT DEPARTMENT. REPLACEMENT WORK TO BE PERFORMED DURING "OFF" HOURS.
327. PULL BACK EXISTING 12-STRAND FIBEROPTIC CABLE SERVING COMMUNICATIONS CLOSET ON THIRD FLOOR AND RETERMINATE CABLE.
328. PROVIDE NEW 7" OPEN FLOOR MOUNTED DATA RACK TO REPLACE EXISTING WALL MOUNTED RACK AND ACCOMMODATE CABLING FROM THIRD AND FOURTH FLOORS. PROVIDE 12" LADDER CABLETRAY ALONG SOUTH WALL OF ROOM.
329. PROVIDE NEW RECESSED PA SYSTEM SPEAKER, BACKBOX, AND CABLING TO MATCH EXISTING SYSTEM. CONNECT TO OTHER SPEAKERS IN THE WING.
330. EXISTING CABLETRAY TO REMAIN AND BE REUSED FOR RESPIRATORY CARE CABLING AND CORRIDOR WIRELESS ACCESS POINTS.

SECOND FLOOR SYSTEMS PLAN
1/8" = 1'-0"

THIRD FLOOR SYSTEMS PLAN
1/8" = 1'-0"

FOURTH FLOOR SYSTEMS PLAN
1/8" = 1'-0"

ENGINEERS/CONSULTANTS:

WOOLPERT, INC.
343 FOUNTAINS PARKWAY
SUITE 100
FAIRVIEW HEIGHTS, IL 62208
314-436-0865
314-436-0884 fax

SCI ENGINEERING, INC
130 POINT WEST BLVD.
ST. CHARLES, MO 63301
636-949-8200
636-949-8269 fax



ARCHITECT:

Chiodini
ARCHITECTS
Architecture / Interior Design / Graphics
1401 S. Brentwood Blvd. / Suite 075 / St. Louis, Missouri 63144
314-725-5588 / arch@chiodini.com

Drawing Title
SECOND, THIRD & FOURTH FLOOR SYSTEMS PLANS

Approved: Project Director
Approver

Project Title
VA HEALTH CARE SYSTEM

Location
VAS 438-16-104 BLDG. 5 CHAPEL
SIOUX FALLS, SD 57105

Project Number
438-16-104 2016.052

Building Number
5

Drawing Number
E-301

Scale: As indicated

Owner

Date
2017.03.13

Checked
Author



3/13/2017 8:40:09 AM
 C:\Revit Local Files\709666_Shouf Falls VA
 Change Set: C:\Revit Local Files\709666_Shouf Falls VA

Revisions: _____ Date _____

VA FORM 08-6231

GENERAL NOTES

- FIRESTOP ALL PENETRATIONS THROUGH FIRE-RATED WALLS OR FLOORS TO PRESERVE RATING.
- SYNCHRONIZE STROBES IN ALL AREAS IN ACCORDANCE WITH NFPA 72.
- THESE WORK PLANS ARE TO BE CONSIDERED DIAGRAMMATIC AND REFLECT GENERAL ORDER OF MAGNITUDE. FINAL DESIGN, CALCULATIONS, AND ALL ELEMENTS NECESSARY FOR A COMPLETE SYSTEM ARE THE RESPONSIBILITY OF THE CONTRACTOR. QUANTITIES OF COMPONENTS AND FINAL WIRING SHALL BE VERIFIED WITH THE FIRE ALARM SYSTEM SUPPLIER. THE CONTRACTOR SHALL BE RESPONSIBLE FOR ANY AND ALL ADDITIONAL POWER SUPPLIES, CONTROL MODULES, MONITOR MODULES, WIRE SIZE, WIRE QUANTITY, ETC., FOR A COMPLETE SYSTEM IN ACCORDANCE WITH THE APPLICABLE CODES, DESIGN DOCUMENTS, AND SPECIFICATIONS.
- ALL WORK SHALL CONFORM TO THE NATIONAL FIRE CODE (NFC), NFPA 70, NFPA 72, NFPA 101, THE VA FIRE PROTECTION DESIGN MANUAL, AND ADDITIONAL REFERENCED CODES AND STANDARDS.
- FINALIZED DUCT DETECTOR LOCATIONS SHALL BE COORDINATED WITH THE MECHANICAL CONTRACTOR.
- WHERE A DUCT SMOKE DETECTOR IS LOCATED ABOVE A CEILING OR IN A DIFFICULT TO REACH LOCATION, PROVIDE A REMOTE INDICATING LAMP AND A TEST KEY SWITCH ON NEARBY WALL AT 7 FEET ABOVE THE FINISHED FLOOR TO FACILITATE TESTING.
- SPRINKLER FLOW AND TAMPER SWITCHES SHALL HAVE REMOTE INDICATOR LIGHTS WITH LABELED IDENTIFICATIONS LOCATED IN NEAREST CEILING ACCESSIBLE TO THE PUBLIC OR AS DIRECTED BY OWNER.
- CONTROL MODULES AND MONITOR MODULES ARE NOT ALL SHOWN ON FLOOR PLANS. PROVIDE FINAL LOCATIONS AND QUANTITIES WITH SHOP DRAWINGS.
- CONTRACTOR SHALL BE RESPONSIBLE FOR PROVIDING MONITOR MODULES FOR ALL TAMPER AND FLOW SWITCHES. COORDINATE EXACT QUANTITY WITH SPRINKLER CONTRACTOR.
- ALL FIRE ALARM WIRING SHALL BE INSTALLED IN METAL RACEWAY SEPARATE FROM ALL OTHER SYSTEMS IN ACCORDANCE WITH VA FIRE PROTECTION DESIGN MANUAL, PARAGRAPH 7.2.D.
- CIRCUITS IN THE RENOVATED AREA SHALL MATCH THE EXISTING SYSTEM. WIRING FOR FIRE ALARM SYSTEM SHALL BE SPECIFIED AND DEFINED IN NFPA 72 AS FOLLOWS: INITIATING DEVICE CIRCUITS (IDCI), CLASS B; SIGNALING LINE CIRCUITS (SLC), CLASS B; NOTIFICATION APPLIANCE CIRCUITS (NAC), CLASS B.
- NOTIFICATION APPLIANCES SHALL BE MOUNTED IN ACCORDANCE WITH NFPA 72 AND ACCESSIBILITY REQUIREMENTS. WALL MOUNTED VISUAL APPLIANCES (STROBES) SHALL BE MOUNTED SO THAT THE LENS IS A MINIMUM OF 80 INCHES ABOVE THE FLOOR OR A MINIMUM OF 8 INCHES FROM THE CEILING. WHICHEVER IS LOWER, CEILING MOUNTED VISUAL APPLIANCES SHALL COMPLY WITH NFPA 72.
- MANUAL PULL STATIONS SHALL BE MOUNTED SO THAT THE OPERATING MECHANISM IS LOCATED 42" TO 48" AFF.
- PROVIDE END OF LINE RESISTORS AS REQUIRED PER NFPA 70, NFPA 72, AND MANUFACTURER REQUIREMENTS.
- SEE SHEET E-301 FOR FIRE ALARM SYSTEM DETAILS.
- THE EXISTING FIRE ALARM CONTROL PANEL (NOTIFIER 303 VOICE SYSTEM) SHALL REMAIN IN SERVICE AND THE COMPONENTS IN THE RENOVATED AREA SHALL BE CONNECTED TO THE EXISTING FACP.
- CONTRACTOR SHALL INCLUDE A MATRIX ON THE SHOP DRAWINGS INDICATING THE INTENDED OPERATION OF THE SYSTEM. THE PROGRAMMING OF THE EXISTING FIRE ALARM CONTROL PANEL (NOTIFIER 303 VOICE SYSTEM) SHALL BE MODIFIED AS NEEDED TO ACCOMMODATE THE CHANGES TO THE SYSTEM IN THE RENOVATED AREA. CONTRACTOR SHALL MATCH THE GENERAL OPERATIONAL FEATURES AND REPORTING ZONES OF THE EXISTING SYSTEM.
- ANY NEW DEVICE LOCATIONS ON EXISTING MASONRY WALLS WHICH ARE NOT BEING FURRED OUT SHALL BE SERVED USING DECORATIVE METALLIC SURFACE RACEWAY, PAINTED TO MATCH WALLS.

APPLICABLE CODES AND STANDARDS

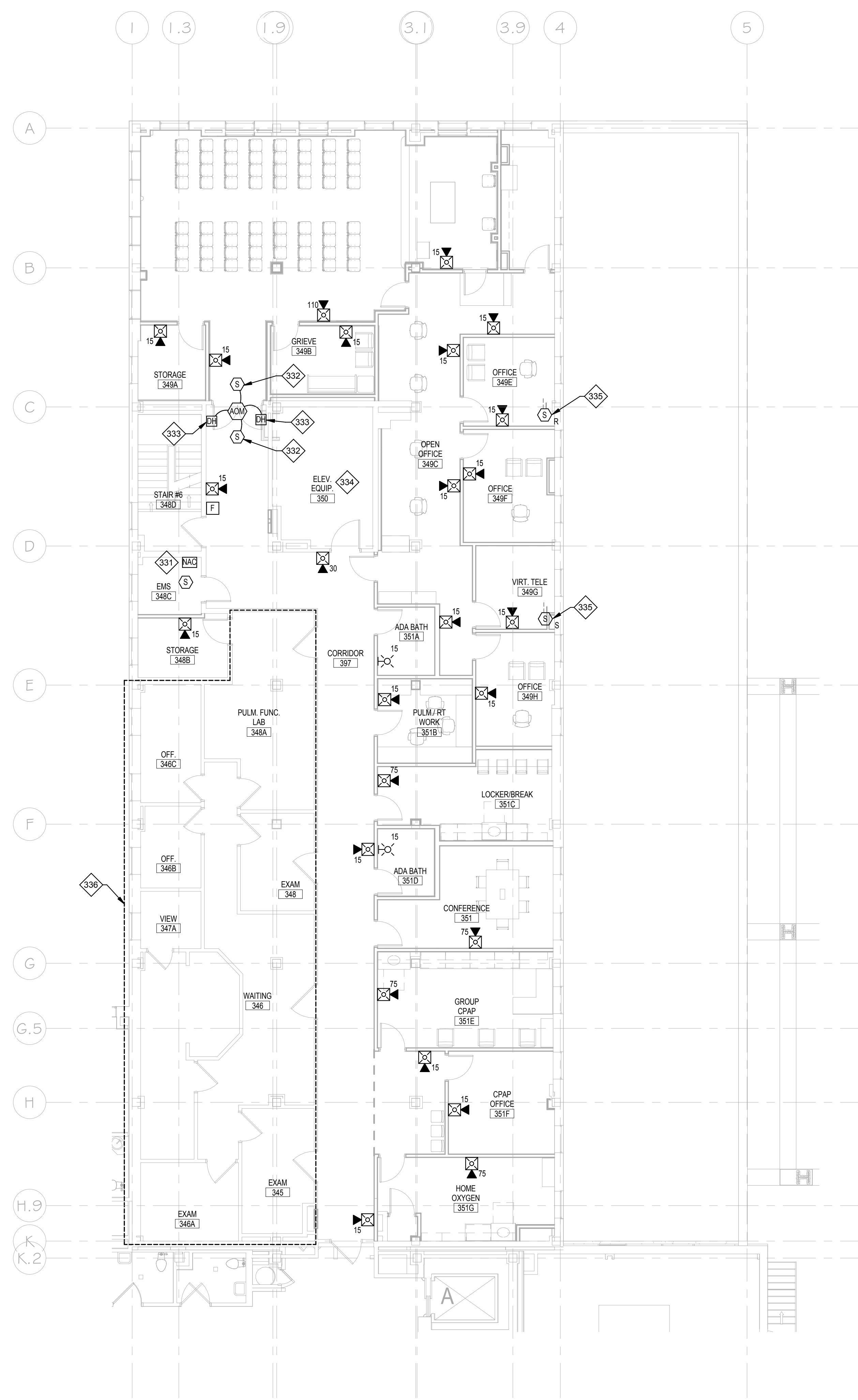
VA FIRE PROTECTION DESIGN MANUAL - U.S. DEPARTMENT OF VETERANS AFFAIRS, SEVENTH EDITION (DECEMBER 2015)
 NFC - NATIONAL FIRE CODES, PUBLISHED BY NATIONAL FIRE PROTECTION ASSOCIATION (NFPA)
 NFPA 70 - NATIONAL ELECTRICAL CODE (2017 EDITION)
 NFPA 72 - NATIONAL FIRE ALARM AND SIGNALING CODE (2016 EDITION)
 NFPA 101 - LIFE SAFETY CODE (2015 EDITION)
 NFPA 110 - STANDARD FOR FIRE SAFETY AND EMERGENCY SYMBOLS (2015 EDITION)

NOTE 1: FOR DESIGN FEATURES THAT ARE ADDRESSED BY BOTH THE IBC AS WELL AS BY NFPA 101 OR THE NFC, THE DOCUMENT REFERENCED BY NFPA 101 OR THE NFC SHALL BE USED EXCLUSIVELY.

NOTE 2: FIRE PROTECTION FEATURES NOT ADDRESSED BY THE NFC OR OTHERWISE ADDRESSED IN THE VA FIRE PROTECTION DESIGN MANUAL SHALL BE DESIGNED TO COMPLY WITH THE REQUIREMENTS OF THE LATEST EDITION OF THE INTERNATIONAL BUILDING CODE (IBC).

FIRE ALARM LEGEND

(S)	ADDRESSABLE SMOKE DETECTOR
(S)	ADDRESSABLE DUCT DETECTOR
(F)	FIRE ALARM MANUAL PULL STATION
15	VISUAL STROBE UNIT NUMBER DENOTES CD RATING
15	AUDIBLE/VISUAL ALARM SPEAKER/STROBE UNIT NUMBER DENOTES CD RATING
(NAC)	REMOTE POWER SUPPLY
(ADM)	FIRE ALARM CONTROL OR MONITOR MODULE
(DH)	MAGNETIC DOOR HOLD OPEN



PLAN NORTH
THIRD FLOOR FIRE ALARM SYSTEMS PLAN
 1/8" = 1'-0"
 0 4' 8' 16'

KEYED NOTES

- PROVIDE NEW REMOTE POWER SUPPLY IN ROOM 348C.
- PROVIDE SMOKE DETECTION FOR RELEASE OF MAGNETIC DOOR HOLD-OPEN DEVICES IN ACCORDANCE WITH NFPA 72.
- COORDINATE 120VAC POWER FOR DOOR HOLD-OPEN DEVICES WITH ELECTRICAL CONTRACTOR.
- NO FIRE ALARM WORK IN ELEVATOR EQUIPMENT ROOM.
- COORDINATE LOCATIONS AND INSTALLATION OF DUCT DETECTORS WITH MECHANICAL CONTRACTOR.
- NO FIRE ALARM WORK IN RESPIRATORY CARE AREA.

Scale: As indicated

one eighth inch = one foot
 one quarter inch = one foot
 one half inch = one foot
 three eighths inch = one foot
 three quarters inch = one foot
 one inch = one foot
 one and one half inches = one foot
 two inches = one foot
 three inches = one foot
 four inches = one foot
 five inches = one foot
 six inches = one foot
 seven inches = one foot
 eight inches = one foot
 nine inches = one foot
 ten inches = one foot
 eleven inches = one foot
 twelve inches = one foot

ENGINEERS/CONSULTANTS:

WOOLPERT, INC.
 343 FOUNTAINS PARKWAY
 SUITE 100
 FAIRVIEW HEIGHTS, IL 62208
 314-436-0865
 314-436-0884 fax

SCI ENGINEERING, INC
 130 POINT WEST BLVD.
 ST. CHARLES, MO 63301
 636-949-8200
 636-949-8269 fax

SEAL

ARCHITECT:

Chiodini
ARCHITECTS
 Architecture / Interior Design / Graphics
 1401 S. Brentwood Blvd. / Suite 075 / St. Louis, Missouri 63144
 314-725-5588 / arch@chiodini.com

THE ARCHITECT EXPRESSLY RESERVES HIS COPYRIGHT AND STATUTORY AND OTHER PROPERTY RIGHTS IN THESE ARCHITECTURAL WORKS AND TECHNICAL DRAWINGS AND ANY DERIVATIVES THEREOF. THESE DRAWINGS AND DOCUMENTS ARE NOT TO BE REPRODUCED, CHANGED OR COPIED IN ANY MANNER WITHOUT THE EXPRESS WRITTEN CONSENT OF LOUIS & CHARLES CHIODINI ARCHITECTS. NOT ABLE TO BE ASSIGNED TO ANY PARTY WITHOUT FIRST OBTAINING WRITTEN PERMISSION AND CONSENT.

© COPYRIGHT PENDING

Drawing Title
THIRD FLOOR FIRE ALARM PLAN

Approved: Project Director
 Approver

Project Title
VA HEALTH CARE SYSTEM

Location
 VAS 438-16-104 BLDG. 5 CHAPEL
 SIOUX FALLS, SD 57105

Date
 2017.03.13

Checked
 Checker

Drawn
 Author

Project Number
 438-16-104 2016.052

Building Number
 5

Drawing Number
E-310

Owner

