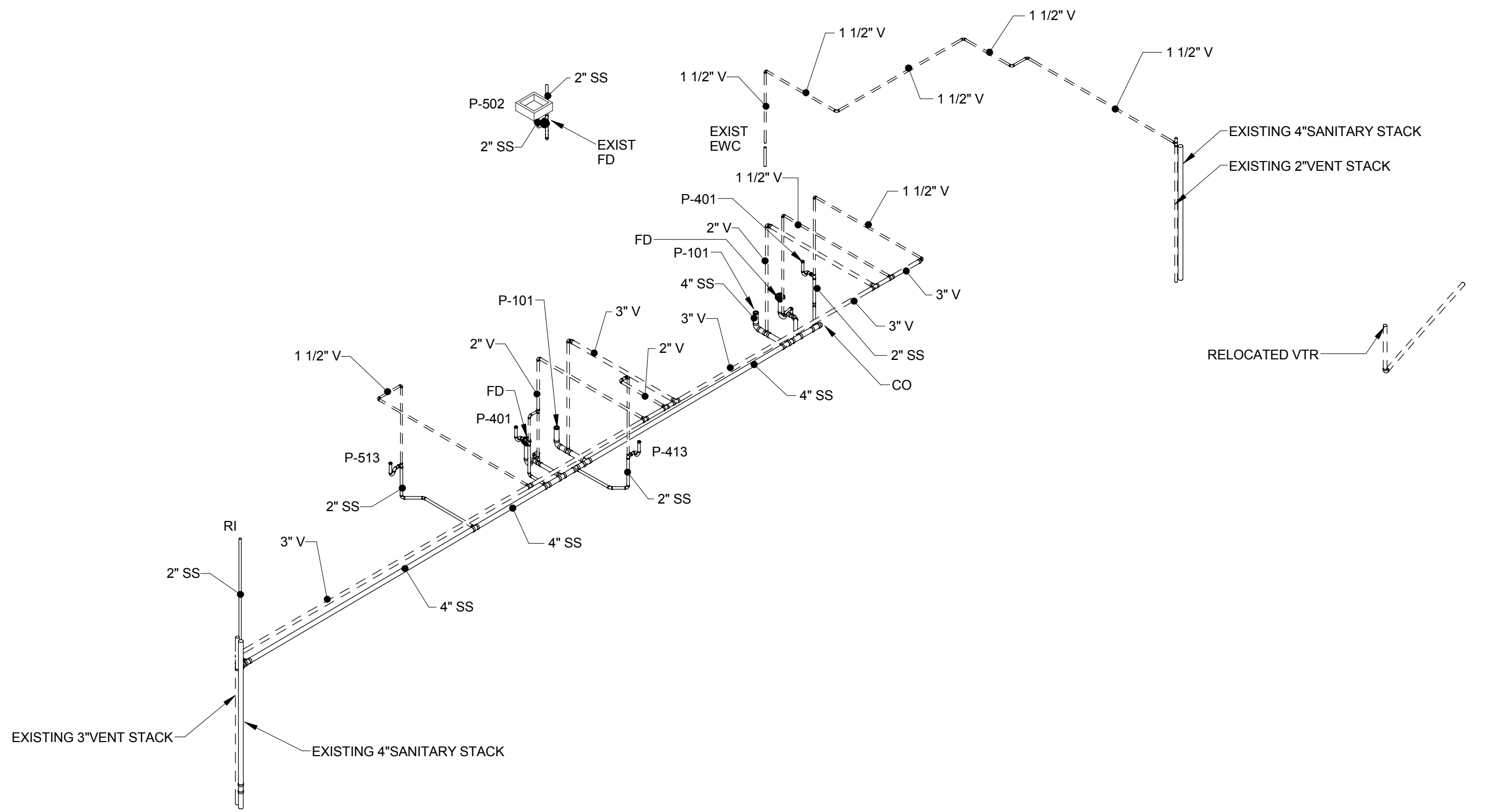
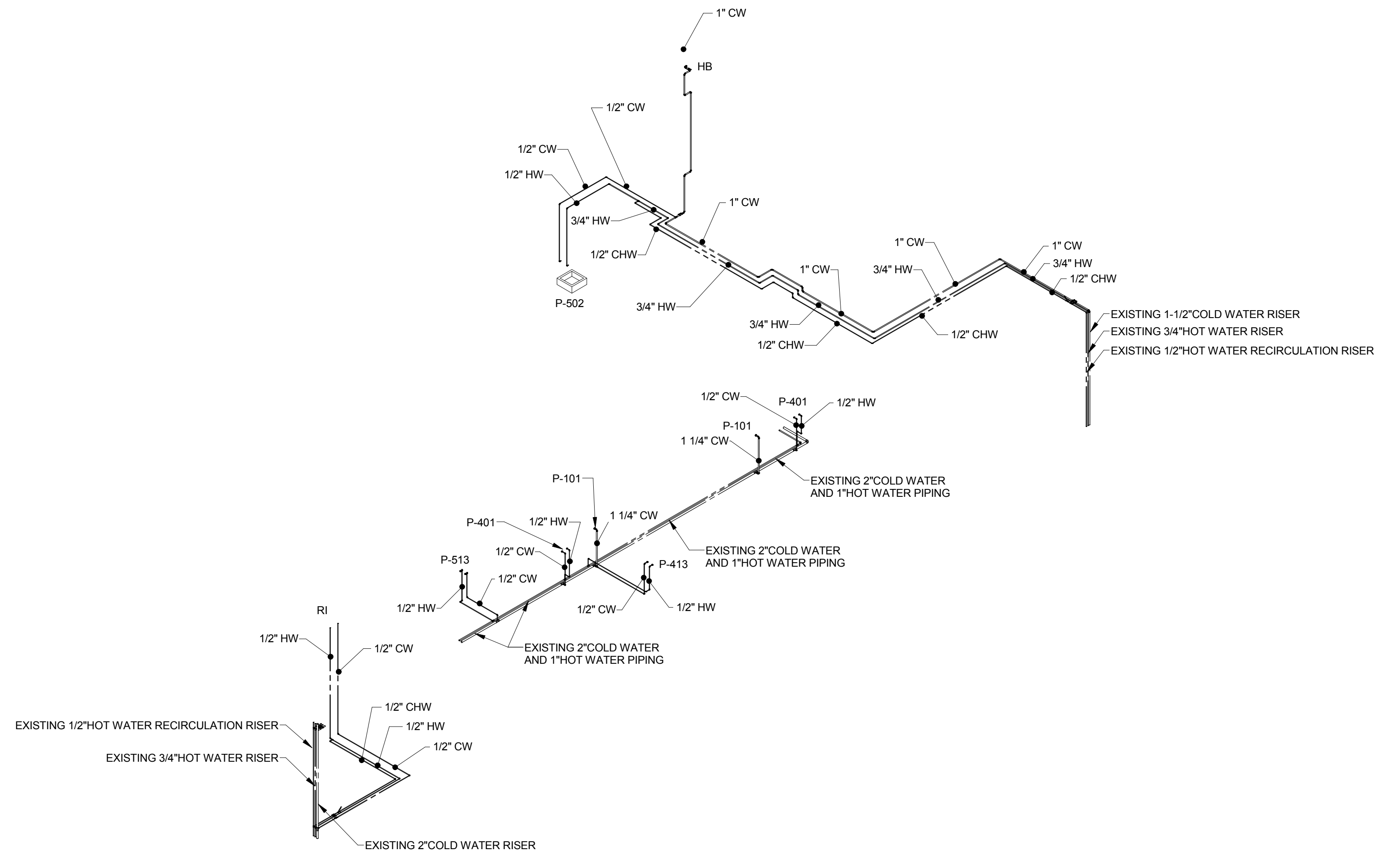


three inches = one foot
one and one half inches = one foot
one inch = one foot
three quarters inch = one foot
one half inch = one foot
three eighths inch = one foot
one quarter inch = one foot
one eighth inch = one foot



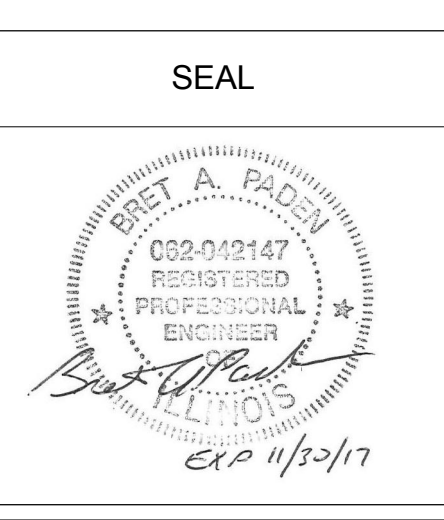
1 WASTE & VENT RISER DIAGRAM
0 4 8 16'



2 DOMESTIC WATER RISER DIAGRAM
0 4 8 16'

ENGINEERS/CONSULTANTS:
WOOLPERT, INC.
343 FOUNTAINS PARKWAY
SUITE 100
FAIRVIEW HEIGHTS, IL 62208
314-436-0865
314-436-0884 fax
SCI ENGINEERING, INC
130 POINT WEST BLVD.
ST. CHARLES, MO 63301
636-949-8200
636-949-8269 fax

SEAL
FINAL SUBMITTAL
FOR CONSTRUCTION



ARCHITECT:
Chiodini
ARCHITECTS
Architecture / Interior Design / Graphics
1401 S. Brentwood Blvd. / Suite 575 / St. Louis, Missouri 63144
314-725-5588 / arch@chiodini.com

Drawing Title
PLUMBING RISER DIAGRAMS
Approved: Project Director
Approver

Project Title
VA HEALTH CARE SYSTEM
Location
VAS 438-16-104 BLDG. 5 CHAPEL
SIOUX FALLS, SD 57105
Date
2017.03.13
Checked
VAA
Drawn
MFB

Project Number
438-16-104 2016.052
Building Number
5
Drawing Number
P901

OWNER

LEGEND

Table with columns: POWER, SPECIAL SYSTEMS, ABBREVIATIONS. Includes symbols for duplex receptacle, quad receptacle, telephone outlet, etc.

DEMOLITION NOTES:

- 1. THE DEMOLITION DRAWINGS ARE DERIVED FROM FIELD OBSERVATIONS AND EXISTING DRAWINGS. THIS CONTRACTOR SHALL BE RESPONSIBLE FOR ALL ELECTRICAL DEMOLITION WORK REQUIRED FOR THE INSTALLATION OF NEW ELECTRICAL WORK AND WORK REQUIRED BY OTHER TRADES.

MOUNTING HEIGHT - TO TOP OF DEVICE (UNLESS NOTED):

- COORDINATE MOUNTING HEIGHTS WITH ARCHITECTURAL PLANS AND ELEVATIONS.
1. RECEPTACLES MOUNTED AT 18" AFF, UNLESS NOTED.
2. SWITCHES MOUNTED AT 48" AFF, UNLESS NOTED.

GENERAL NOTES:

- 1. INSTALL ELECTRICAL SYSTEM IN ACCORDANCE WITH ALL STATE CODES, LOCAL CODES AND N.E.C. 2014 AND ITS APPENDICES, UNLESS OTHERWISE DIRECTED SPECIFICALLY BY THESE PLANS.
2. FOR CLARITY, ONLY EXISTING LIGHT FIXTURES, SWITCHES, RECEPTACLES, ETC. ARE SHOWN WHICH ARE PERTINENT TO THIS WORK.

LIGHTING AND POWER NOTES:

- 1. LIGHT FIXTURES DESIGNATED AS "NIGHT LIGHTS" SHALL BE ON UNSWITCHED CIRCUIT, UNLESS NOTED.
2. LIGHT FIXTURES DESIGNATED AS "EMERGENCY LIGHTS" SHALL BE SWITCHED AND PROVIDED WITH EMERGENCY BALLAST ON UNSWITCHED CIRCUIT (SAME CIRCUIT AS SWITCH LEG), UNLESS NOTED.

Table with columns: LIGHTING, EXISTING DEVICES, DEMOLITION. Includes symbols for LED light fixture, existing duplex receptacle, existing light switch, etc.

Vertical scale markings on the left side of the page, including 'three inches = one foot', 'one and one half inches = one foot', etc.

Scale: 12" = 1'-0"

ENGINEERS/CONSULTANTS: WOOLPERT, INC. 343 FOUNTAINS PARKWAY SUITE 100 FAIRVIEW HEIGHTS, IL 62208 314-436-0865 314-436-0884 fax

SEAL: ARCHITECT: CHIODINI ARCHITECTS. Includes professional seal and contact information.

ARCHITECT: CHIODINI ARCHITECTS. Includes logo and contact information for the architect.

Drawing Title: LEGEND AND GENERAL NOTES. Includes project director and approver information.

Project Title: VA HEALTH CARE SYSTEM. Includes project number, building number, location, and drawing number E-001.

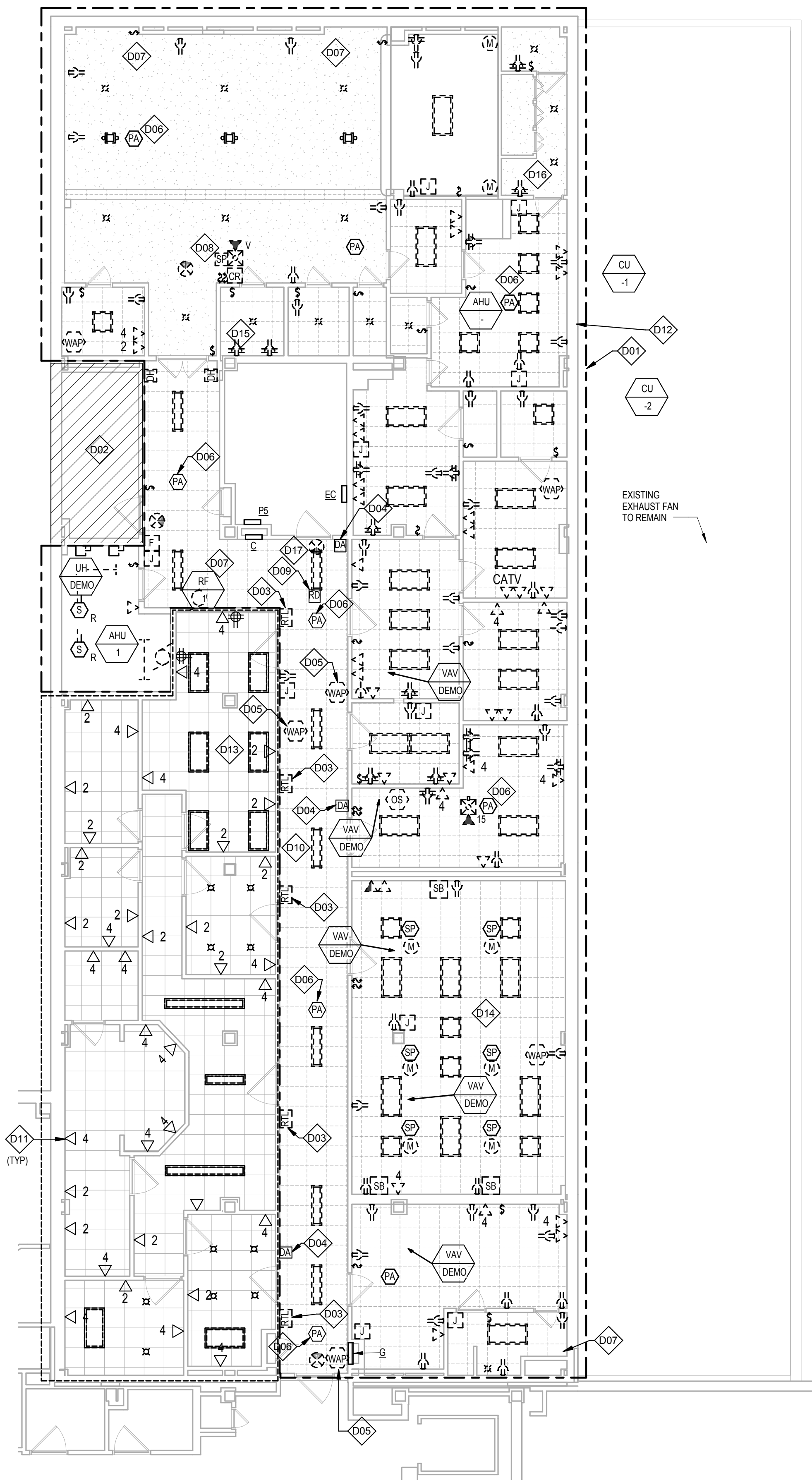
Owner: Includes logo and name of the project owner.

GENERAL NOTES

- CUT OFF 1" BELOW FLOOR SURFACE AND GROUT IN ANY EXISTING CONDUIT PENETRATIONS THROUGH FLOORS WHERE WALLS ARE REMOVED. REFER TO THE GENERAL CONTRACTOR'S DEMOLITION PLAN FOR PROCESS AND PROCEDURES RELATED TO DEMOLITION, SAFETY, AND EMERGENCY PROCEDURES.
- REFER TO MECHANICAL DEMOLITION PLANS FOR EQUIPMENT TO BE DISCONNECTED AND MADE SAFE BY ELECTRICAL CONTRACTOR. FOR REMOVAL BY MECHANICAL CONTRACTOR OR DEMOLITION CONTRACTOR.
- EXISTING MECHANICAL, ELECTRICAL, AND PLUMBING SYSTEMS WHICH SERVE PORTIONS OF THE BUILDING WHICH ARE OUTSIDE THE SCOPE OF WORK OF THIS CONTRACT SHALL REMAIN ACTIVE AT ALL TIMES. IF IT IS DEEMED NECESSARY TO TEMPORARILY DISRUPT ANY ELECTRICAL, PLUMBING, OR MECHANICAL SERVICES, IT SHALL BE THE CONTRACTOR'S RESPONSIBILITY TO COORDINATE THE SCHEDULE FOR DISRUPTION OF SERVICES WITH THE OWNER. THE OWNER'S SCHEDULES WILL DICTATE THE CONTRACTOR'S SCHEDULE FOR SYSTEMS SHUT-DOWN.
- THE BUILDING'S FIRE ALARM SYSTEM SHALL REMAIN OPERATIONAL THROUGHOUT THE PROJECT. COORDINATE WITH OWNER FOR BRIEF PERIODS WHEN REQUIRED MODIFICATIONS REQUIRE DEACTIVATION OF THE SYSTEM UPON REMOVAL OF FIRE ALARM DEVICES. PROVIDE MODIFICATION OF FIRE ALARM SYSTEM PROGRAMMING TO REFLECT CHANGES.
- ALL EXISTING LAMPS AND BALLASTS ARE TO BE REMOVED AND DISPOSED OF PROPERLY PER EPA REQUIREMENTS FOR MERCURY AND PCB'S.
- ALL EXISTING ELECTRICAL PANELS ARE TO REMAIN UNLESS OTHERWISE NOTED. EVEN WITH WALLS RECEIVING NEW FINISHES.

KEYED NOTES

- D01 ALL ELECTRICAL ITEMS WITHIN BORDERED AREA TO BE REMOVED IN THEIR ENTIRETY AND CIRCUITRY REMOVED BACK TO SOURCE UNLESS NOTED OTHERWISE. POWER AND VARIOUS LOW VOLTAGE CABLING WHICH SERVES FLOOR ABOVE OR SPACE OTHERWISE OUTSIDE THE AREA MAY BE REMOVED IN THE AREA AND MUST REMAIN IN SERVICE AND PROTECTED AT ALL TIMES DURING CONSTRUCTION.
- D02 NO WORK IN HATCHED AREA UNLESS CIRCUITRY OR CABLING SERVING DEMOLISHED AREA PASSES THROUGH IT. REMOVE SUCH CIRCUITRY WITH CARE TO NOT CAUSE DISTURBANCE OF THE FINISHED SPACE.
- D03 EXISTING REAL TIME LOCATOR ANTENNA. REMOVE AND RETURN TO OWNER.
- D04 EXISTING DURESS SYSTEM ANTENNA TO BE REMOVED BY VA. COORDINATE WITH VA.
- D05 EXISTING WIRELESS ACCESS POINT. REMOVE FROM CEILING AND TEMPORARILY SUPPORT IN CEILING SPACE DURING CONSTRUCTION. PROTECT CABLING SERVING IT.
- D06 EXISTING PA SYSTEM SPEAKER TO BE TIED UP IN CEILING SPACE DURING CONSTRUCTION FOR REINSTALLATION IN NEW CEILING.
- D07 DISCONNECT EXISTING MECHANICAL EQUIPMENT AND REMOVE CIRCUITRY BACK TO SOURCE.
- D08 REMOVE EXISTING CARD READER AND REQUEST TO EXIT DEVICE WITHIN CLOSET AND RETURN TO OWNER.
- D09 EXISTING ROBOTIC DELIVERY ANTENNA SYSTEM. REMOVE FROM WALL AND TEMPORARILY SUPPORT IN CEILING SPACE DURING CONSTRUCTION. PROTECT CABLING SERVING IT.
- D10 EXISTING 12"x4" CABLETRAY IN CORRIDOR CEILING TO REMAIN. CABLING WITHIN TO BE REPLACED PER NOTE D11. CABLETRAY NOT SHOWN FOR CLARITY PURPOSES.
- D11 EXISTING DATA AND TELEPHONE CABLING SERVING RESPIRATORY CARE CLINIC TO BE REPLACED AND REROUTED TO EXISTING 2ND FLOOR IT ROOM. SEE SHEET E-301.
- D12 COORDINATE REPAIR OF EXTERIOR WALL WHERE CONDUITS AND DISCONNECTS SERVING CONDENSING UNITS ARE REMOVED.
- D13 REMOVE EXISTING LIGHTING FIXTURES FROM CEILING AS REQUIRED FOR VAV HEATING COIL REPLACEMENT. REINSTALL LIGHTS.
- D14 EXISTING SMARTBOARD SYSTEM, SPEAKERS, AND MICROPHONES TO BE REMOVED IN ITS ENTIRETY BY OWNER'S CURRENT SMARTBOARD SERVICE CONTRACTOR AS A SUBCONTRACT TO ELECTRICAL CONTRACTOR. TURN ALL COMPONENTS OVER TO VA FOR STORAGE.
- D15 EXISTING COMMUNICATIONS CABLING AND EQUIPMENT TO BE REMOVED AND RELOCATED/RE-ROUTED TO EXISTING IT ROOM ON FLOOR BELOW. COORDINATE RE-ROUTING AND RELOCATING WITH VA IT DEPARTMENT.
- D16 IDENTIFY AND TRACE EXISTING CABLING WHICH TRANSMITS THE CHAPEL BROADCAST TO THE VA FACILITY - WIDE TV DISTRIBUTION SYSTEM UP TO WHERE IT LEAVES THE THIRD FLOOR WEST WING. PROTECT THE CABLING THROUGHOUT THE CONSTRUCTION PROCESS FOR REUSE WITH NEW A/V EQUIPMENT. REARRANGE/RE-ROUTE CABLING AS NEEDED TO ACCOMMODATE DEMOLITION AND NEW EQUIPMENT INSTALLATION.
- D17 POWER CONNECTION FOR ELECTRIC WATER COOLER TO REMAIN.



PLAN NORTH
THIRD FLOOR ELECTRICAL DEMOLITION PLAN
 1/8" = 1'-0"
 0 4' 8' 16'

three inches = one foot
 one and one half inches = one foot
 one inch = one foot
 three quarters inch = one foot
 one half inch = one foot
 one quarter inch = one foot
 one eighth inch = one foot
 one sixteenth inch = one foot

ENGINEERS/CONSULTANTS:
 WOOLPERT, INC.
 343 FOUNTAINS PARKWAY
 SUITE 100
 FAIRVIEW HEIGHTS, IL 62208
 314-436-0865
 314-436-0884 fax

SCI ENGINEERING, INC
 130 POINT WEST BLVD.
 ST. CHARLES, MO 63301
 636-949-8200
 636-949-8269 fax

SEAL

 KIRK M. WOLF
 PROFESSIONAL ENGINEER
 STATE OF ILLINOIS
 LICENSE NO. 036-056225
 SIGNED: 3/13/2017
 EXPIRES: 11-30-2017

ARCHITECT:

 ARCHITECTURE / Interior Design / Graphics
 1401 S. Brentwood Blvd. / Suite 375 / St. Louis, Missouri 63144
 314-725-5588 / arch@chiodini.com

THE ARCHITECT EXPRESSLY RESERVES HIS COMMON LAW AND STATUTORY LAW COPYRIGHTS AND OTHER PROPERTY RIGHTS IN THESE ARCHITECTURAL WORKS AND TECHNICAL DRAWINGS AND ANY DERIVATIVES THEREOF. THESE DRAWINGS AND DOCUMENTS ARE NOT TO BE REPRODUCED, CHANGED OR COPIED IN ANY MANNER WITHOUT THE EXPRESS WRITTEN CONSENT OF LOUIS & CLARK PETERSON ARCHITECTS. NOR ARE THEY TO BE ASSIGNED TO ANY PARTY WITHOUT FIRST OBTAINING WRITTEN PERMISSION AND CONSENT.
 © COPYRIGHT PENDING

Drawing Title
THIRD FLOOR ELECTRICAL DEMOLITION PLAN

Approved: Project Director
 Approver

Project Title
VA HEALTH CARE SYSTEM

Location
 VAS 438-16-104 BLDG. 5 CHAPEL
 SIOUX FALLS, SD 57105

Date
 2017.03.13

Checked
 KMM

Drawn
 LK

Project Number
 438-16-104 2016.052

Building Number
 5

Drawing Number
ED-001

Owner

Scale: As indicated

