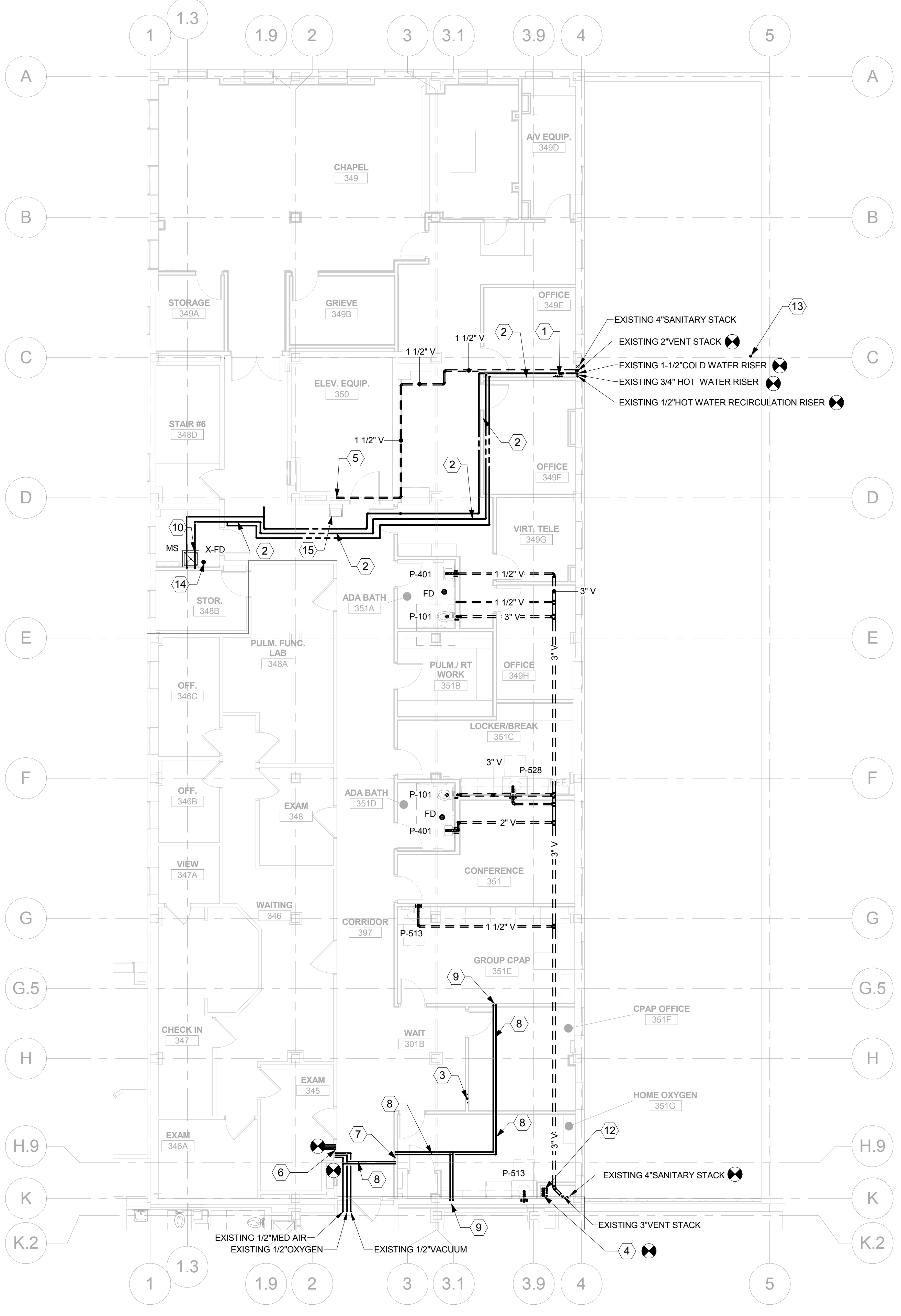


Scale: 1/8" = 1'-0"
one eighth inch = one foot
one quarter inch = one foot
one half inch = one foot
three eighths inch = one foot
one inch = one foot
one and one half inches = one foot
two inches = one foot
three inches = one foot
four inches = one foot
five inches = one foot
six inches = one foot
seven inches = one foot
eight inches = one foot
nine inches = one foot
ten inches = one foot
eleven inches = one foot
twelve inches = one foot
thirteen inches = one foot
fourteen inches = one foot
fifteen inches = one foot
sixteen inches = one foot
seventeen inches = one foot
eighteen inches = one foot
nineteen inches = one foot
twenty inches = one foot
twenty one inches = one foot
twenty two inches = one foot
twenty three inches = one foot
twenty four inches = one foot
twenty five inches = one foot
twenty six inches = one foot
twenty seven inches = one foot
twenty eight inches = one foot
twenty nine inches = one foot
thirty inches = one foot
thirty one inches = one foot
thirty two inches = one foot
thirty three inches = one foot
thirty four inches = one foot
thirty five inches = one foot
thirty six inches = one foot
thirty seven inches = one foot
thirty eight inches = one foot
thirty nine inches = one foot
forty inches = one foot
forty one inches = one foot
forty two inches = one foot
forty three inches = one foot
forty four inches = one foot
forty five inches = one foot
forty six inches = one foot
forty seven inches = one foot
forty eight inches = one foot
forty nine inches = one foot
fifty inches = one foot
fifty one inches = one foot
fifty two inches = one foot
fifty three inches = one foot
fifty four inches = one foot
fifty five inches = one foot
fifty six inches = one foot
fifty seven inches = one foot
fifty eight inches = one foot
fifty nine inches = one foot
sixty inches = one foot
sixty one inches = one foot
sixty two inches = one foot
sixty three inches = one foot
sixty four inches = one foot
sixty five inches = one foot
sixty six inches = one foot
sixty seven inches = one foot
sixty eight inches = one foot
sixty nine inches = one foot
seventy inches = one foot
seventy one inches = one foot
seventy two inches = one foot
seventy three inches = one foot
seventy four inches = one foot
seventy five inches = one foot
seventy six inches = one foot
seventy seven inches = one foot
seventy eight inches = one foot
seventy nine inches = one foot
eighty inches = one foot
eighty one inches = one foot
eighty two inches = one foot
eighty three inches = one foot
eighty four inches = one foot
eighty five inches = one foot
eighty six inches = one foot
eighty seven inches = one foot
eighty eight inches = one foot
eighty nine inches = one foot
ninety inches = one foot
ninety one inches = one foot
ninety two inches = one foot
ninety three inches = one foot
ninety four inches = one foot
ninety five inches = one foot
ninety six inches = one foot
ninety seven inches = one foot
ninety eight inches = one foot
ninety nine inches = one foot
one hundred inches = one foot



- ### GENERAL NOTES
- SEE DRAWING P001 FOR PROJECT NOTES AND SPECIFICATIONS FOR ADDITIONAL CONTRACTOR INFORMATION.
 - IN GENERAL, COLD AND HOT WATER PIPING AND SANITARY PIPING ARE LOCATED ABOVE CEILING ON THE SECOND FLOOR AND IN CHASE/WALL CAVITIES. VENT PIPING IN GENERAL IS LOCATED ABOVE CEILING ON THE THIRD FLOOR AND IN CHASE/WALL CAVITIES. EXCEPTIONS AS NOTED IN PLANS.
 - SEE ARCHITECTURAL DRAWINGS FOR ELEVATIONS AND FIXTURE HEIGHT REQUIREMENTS.
 - THIS CONTRACTOR SHALL BE RESPONSIBLE FOR ALL WALL/FLOOR/CEILING ROOF CUTTING AND PATCHING AS REQUIRED FOR THIS TRADE (PLUMBING) WORK.
 - FINAL FINISHES SHALL BE THE RESPONSIBILITY OF THE GENERAL CONTRACTOR.
 - WHERE EXISTING PLUMBING SYSTEMS ARE MODIFIED OR WHERE NEW PLUMBING SYSTEMS INTERFACE WITH EXISTING SYSTEMS, THE PLUMBING CONTRACTOR SHALL CLEAN AND FLUSH THE EXISTING PLUMBING LINES AS REQUIRED TO ENSURE PROPER FLOWS AND/OR LINE CARRY.
 - DURING THE COURSE OF DEMOLITION WORK, THE CONTRACTOR SHALL KEEP IN MIND THE POSSIBILITY OF FUTURE RECONNECTION OR EXTENSION OF THE EXISTING PLUMBING SYSTEMS AND ITS COMPONENTS.
 - COORDINATE WITH THE MECHANICAL CONTRACTOR, ELECTRICAL CONTRACTOR AND SPRINKLER CONTRACTOR PRIOR TO AND DURING THE DEMOLITION OF PLUMBING SYSTEMS AND COMPONENTS THAT MAY HAVE APPLICATIONS INVOLVING THESE TRADES.

- ### KEYED NOTES
- INSTALL NEW ISOLATION BALL VALVES WITHIN 24" OF THE EXISTING RISERS. INSTALL NEW CIRCUIT SETTER SET TO 5 GPM IN NEW 1/2" HOT WATER RECIRCULATION PIPING.
 - ROUTE NEW 1" COLD WATER, 3/4" HOT WATER AND 1/2" HOT WATER RECIRCULATION PIPING FROM EXISTING RISERS TO MECHANICAL ROOM.
 - PROVIDE ROUGH-IN FOR FUTURE SINK. ROUTE 1/2" HOT AND COLD WATER UP FROM SECOND FLOOR AND 2" SANITARY DOWN TO SECOND FLOOR.
 - EXISTING 2" COLD WATER RISER, 3/4" HOT WATER RISER AND 1/2" HOT WATER RECIRCULATION RISER.
 - INSTALL NEW 1-1/2" VENT PIPING OFF OF EXISTING SANITARY CONNECTION FOR EXISTING ELECTRIC WATER COOLER. CONNECT SANITARY PIPE FROM ELECTRIC WATER COOLER INTO EXISTING 2" COPPER SANITARY STACK.
 - EXISTING MEDICAL AIR, OXYGEN AND VACUUM PIPING DROP TO EXISTING BEACON MEDS CONTROL VALVE BOX IN CORRIDOR THEN GO UP INTO MEDICAL SUITE ABOVE EXISTING CEILING.
 - INSTALL NEW BEACON MEDS CONTROL VALVE BOX IN CORRIDOR ACROSS FROM EXISTING CONTROL VALVE BOX.
 - NEW 1/2" MEDICAL AIR AND OXYGEN
 - MEDICAL AIR AND OXYGEN DROP IN WALL TO BEACON MEDS CONNECTION PANEL SIMILAR TO CONNECTION BOXES IN MEDICAL SUITE ACROSS HALL.
 - INSTALL NEW MOP SINK AND ANCILLARY TRIM AS SCHEDULED. MOP SINK SHALL HAVE HIGH QUALITY BASKET STRAINER. CLEAN AND ROD EXISTING SANITARY PIPING PRIOR TO CONNECTING MOP SINK INTO EXISTING SYSTEM.
 - 1" COLD WATER UP FROM THIRD FLOOR TO FIFTH FLOOR. 1" COLD WATER PIPING TO FOLLOW THE ROUTING OF HOT WATER PIPING FROM FIFTH FLOOR TO THIRD FLOOR. KEEP COLD WATER PIPING TIGHT TO THE WALL ON THE FOURTH FLOOR.
 - AFTER DEMOLISHING ALL COLD WATER, HOT WATER AND HOT WATER RECIRCULATING PIPING BACK TO RISERS, INSTALL 24" LENGTH OF 1" COLD WATER, 3/4" HOT WATER AND 1/2" HOT WATER RECIRCULATION PIPING OF THE RISERS FOR FUTURE PLUMBING FIXTURE CONNECTION. ENSURE ALL THREE PIPE HAVE SHUT-OFF VALVES INSTALLED.
 - NEW ROOF TOP UNIT WILL BE INSTALLED. ANY VENT THROUGH ROOFS WILL NEED TO BE RELOCATED. COORDINATE WITH MECHANICAL CONTRACTOR AND ENSURE THE NEW LOCATIONS ARE GREATER THAN 12 FOOT FROM SUPPLY AIR OPENING ON THE UNIT.
 - CONDENSATE LINES FOR AIR HANDLING UNITS BELOW NEED TO STAY ROUTED TO EXISTING FLOOR DRAIN. RELOCATE DRAIN LINES IF NEW WALL DISRUPTS EXISTING ROUTING.
 - REINSTALL EXISTING ELECTRIC WATER COOLER. RECONNECT SUPPLY AND DWV PIPING.

1 P103 PLUMBING THIRD FLOOR PLAN
1/8" = 1'-0"

ENGINEERS/CONSULTANTS:

WOOLPERT, INC.
343 FOUNTAINS PARKWAY
SUITE 100
FAIRVIEW HEIGHTS, IL 62208
314-436-0865
314-436-0884 fax

SCI ENGINEERING, INC
130 POINT WEST BLVD.
ST. CHARLES, MO 63301
636-949-8200
636-949-8269 fax

SEAL

FINAL SUBMITTAL FOR CONSTRUCTION

PROFESSIONAL ENGINEER
STATE OF MISSOURI
No. 012147
Date 11/12/17

ARCHITECT:

Chiodini
ARCHITECTS
Architecture / Interior Design / Graphics
1401 S. Brentwood Blvd. / Suite 575 / St. Louis, Missouri 63144
314-725-5088 / arch@chiodini.com

THE ARCHITECT EXPRESSLY RESERVES HIS/HER/CORBORAL AND STATUTORY LAW COPYRIGHTS AND OTHER PROPERTY RIGHTS FOR THESE ARCHITECTURAL PLANS AND TECHNICAL DOCUMENTS AND ANY DERIVATIVES THEREOF. THESE DRAWINGS AND DOCUMENTS ARE NOT TO BE REPRODUCED, CHANGED OR USED IN ANY MANNER WITHOUT THE EXPRESS WRITTEN CONSENT OF CHIODINI ARCHITECTS. NO PART OF THESE DRAWINGS OR ANY PART THEREOF ARE TO BE ASSIGNED TO ANY PARTY WITHOUT FIRST OBTAINING THE WRITTEN PERMISSION AND CONSENT OF CHIODINI ARCHITECTS.

© COPYRIGHT PENDING

Drawing Title
PLUMBING THIRD FLOOR PLAN

Approved: Project Director
Approver

Project Title
VA HEALTH CARE SYSTEM

Project Number
438-16-104 2016.052

Building Number
5

Drawing Number
P103

Location
VAS 438-16-104 BLDG. 5 CHAPEL
SIOUX FALLS, SD 57105

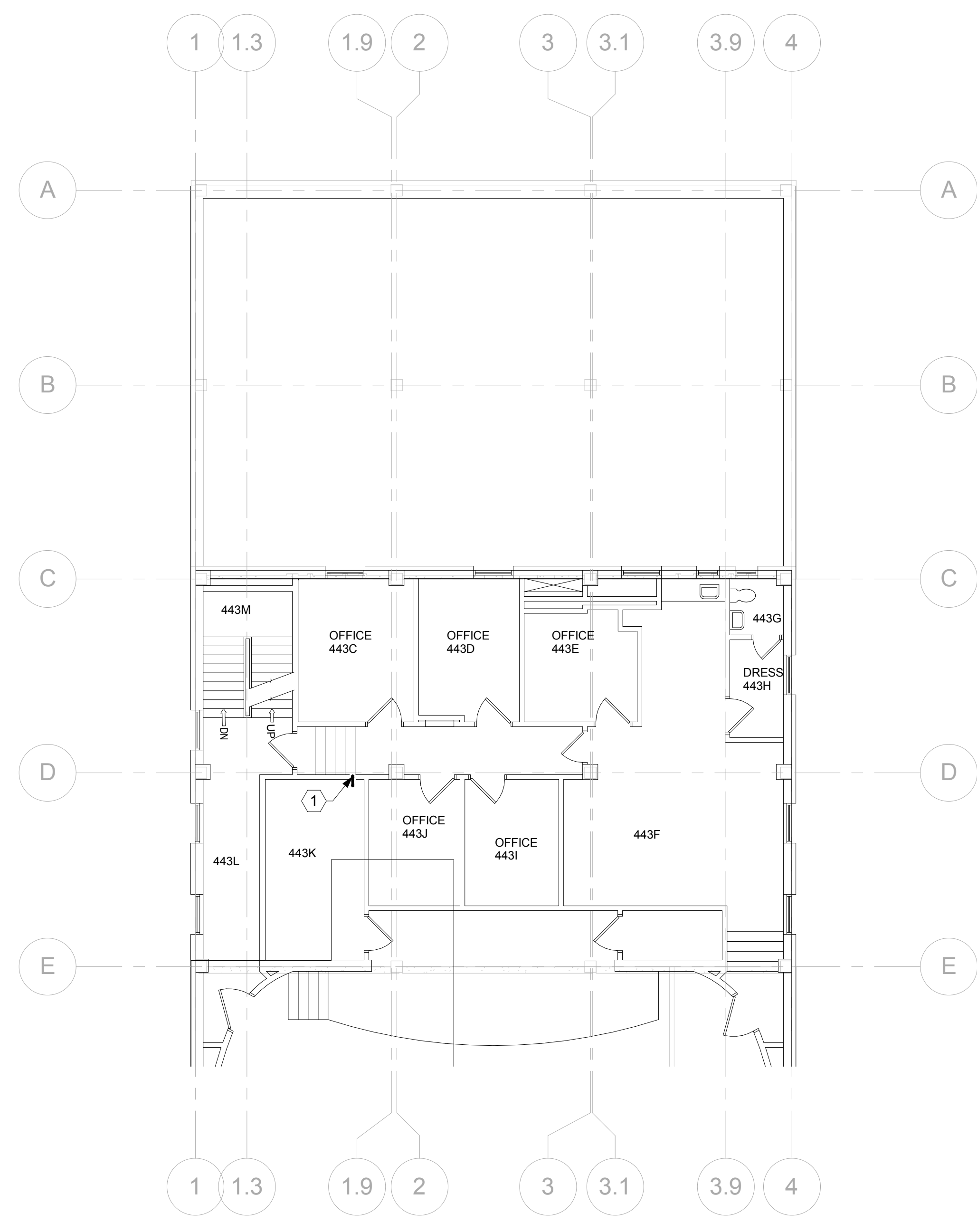
Date
2017.03.13

Checked
VAA

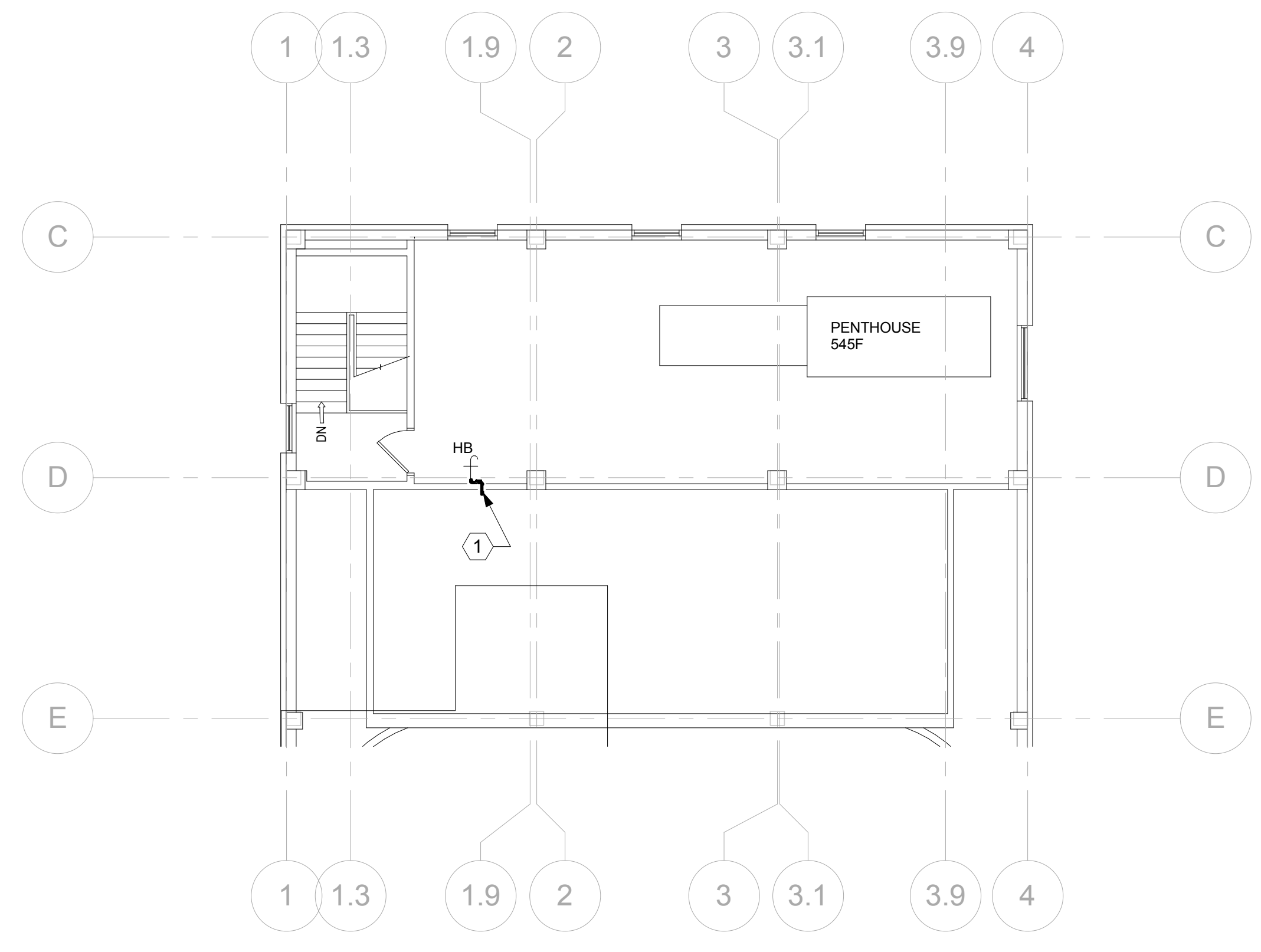
Drawn
MFB

OWNER

KEYED NOTES	
1	1" COLD WATER UP FROM THIRD FLOOR TO FIFTH FLOOR. 1" COLD WATER PIPING TO FOLLOW THE ROUTING OF HOT WATER PIPING FROM FIFTH FLOOR TO THIRD FLOOR. KEEP COLD WATER PIPING TIGHT TO THE WALL ON THE FOURTH FLOOR.



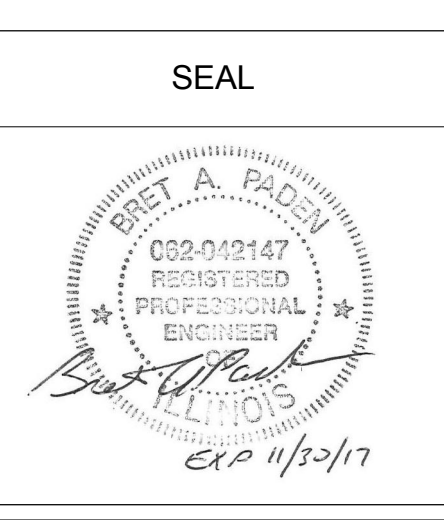
2 LEVEL 4 OVERALL PLUMBING PLAN
P401 1/8" = 1'-0" 0 4 8 16'



1 LEVEL 5 OVERALL PLUMBING PLAN
P401 1/8" = 1'-0" 0 4 8 16'

three inches = one foot
 one and one half inches = one foot
 one inch = one foot
 three quarters inch = one foot
 three eighths inch = one foot
 one half inch = one foot
 one quarter inch = one foot
 one eighth inch = one foot
 3/13/2017 8:32:25 AM
 C:\Local Revit Files\76966_Sioux Falls_VA_Chapel_545F_Penthouse.rvt
 User: jmc
 VA FORM 08-6231

ENGINEERS/CONSULTANTS:	
WOOLPERT, INC. 343 FOUNTAINS PARKWAY SUITE 100 FAIRVIEW HEIGHTS, IL 62208 314-436-0865 314-436-0884 fax	SCI ENGINEERING, INC 130 POINT WEST BLVD. ST. CHARLES, MO 63301 636-949-8200 636-949-8269 fax
FINAL SUBMITTAL FOR CONSTRUCTION	



ARCHITECT:

Chiodini
ARCHITECTS

Architecture / Interior Design / Graphics
1401 S. Brentwood Blvd. / Suite 575 / St. Louis, Missouri 63144
314-725-5588 / arch@chiodini.com

THE ARCHITECT EXPRESSLY RESERVES HIS COMMON LAW AND STATUTORY LAW COPYRIGHTS AND OTHER PROPERTY RIGHTS FOR THESE ARCHITECTURAL WORKS AND TECHNICAL DRAWINGS AND ANY DERIVATIVES THEREOF. THESE DRAWINGS AND DOCUMENTS ARE NOT TO BE REPRODUCED, CHANGED OR COPIED IN ANY MANNER WITHOUT THE EXPRESS WRITTEN CONSENT OF CHIODINI ARCHITECTS. FOR ANY USE WITHOUT FIRST OBTAINING THE EXPRESS WRITTEN CONSENT OF CHIODINI ARCHITECTS, NO PART ARE THEY TO BE ASSIGNED TO ANY PARTY WITHOUT FIRST OBTAINING THE WRITTEN PERMISSION AND CONSENT.

© COPYRIGHT PENDING

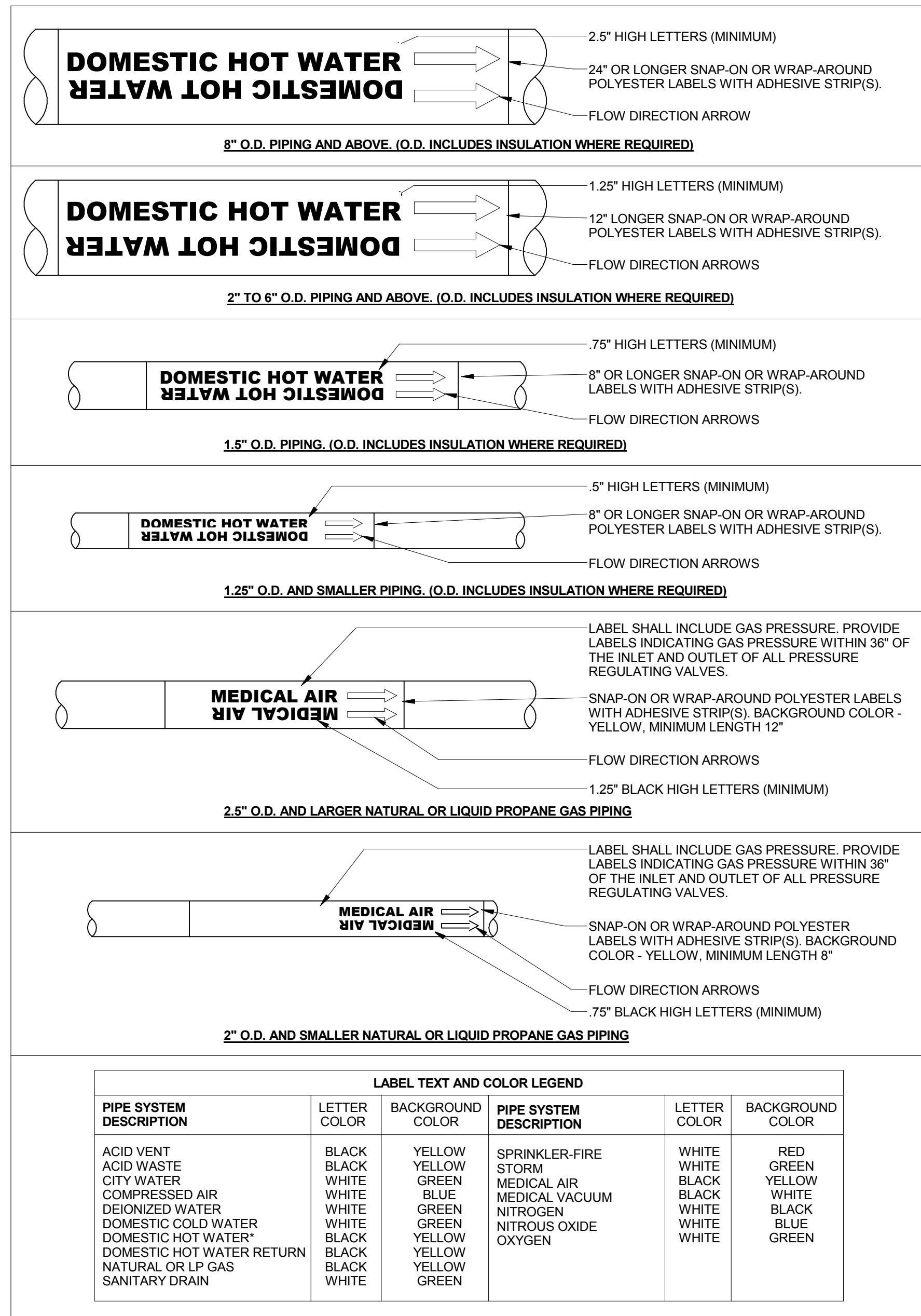
Drawing Title	ENLARGED PLUMBING PLANS
Approved: Project Director	Approver

Project Title	VA HEALTH CARE SYSTEM	Project Number	438-16-104 2016.052
Location	VAS 438-16-104 BLDG. 5 CHAPEL SIOUX FALLS, SD 57105	Building Number	5
Date	2017.03.13	Checked	VAA
		Drawn	MFB
Drawing Number	P401		

OWNER

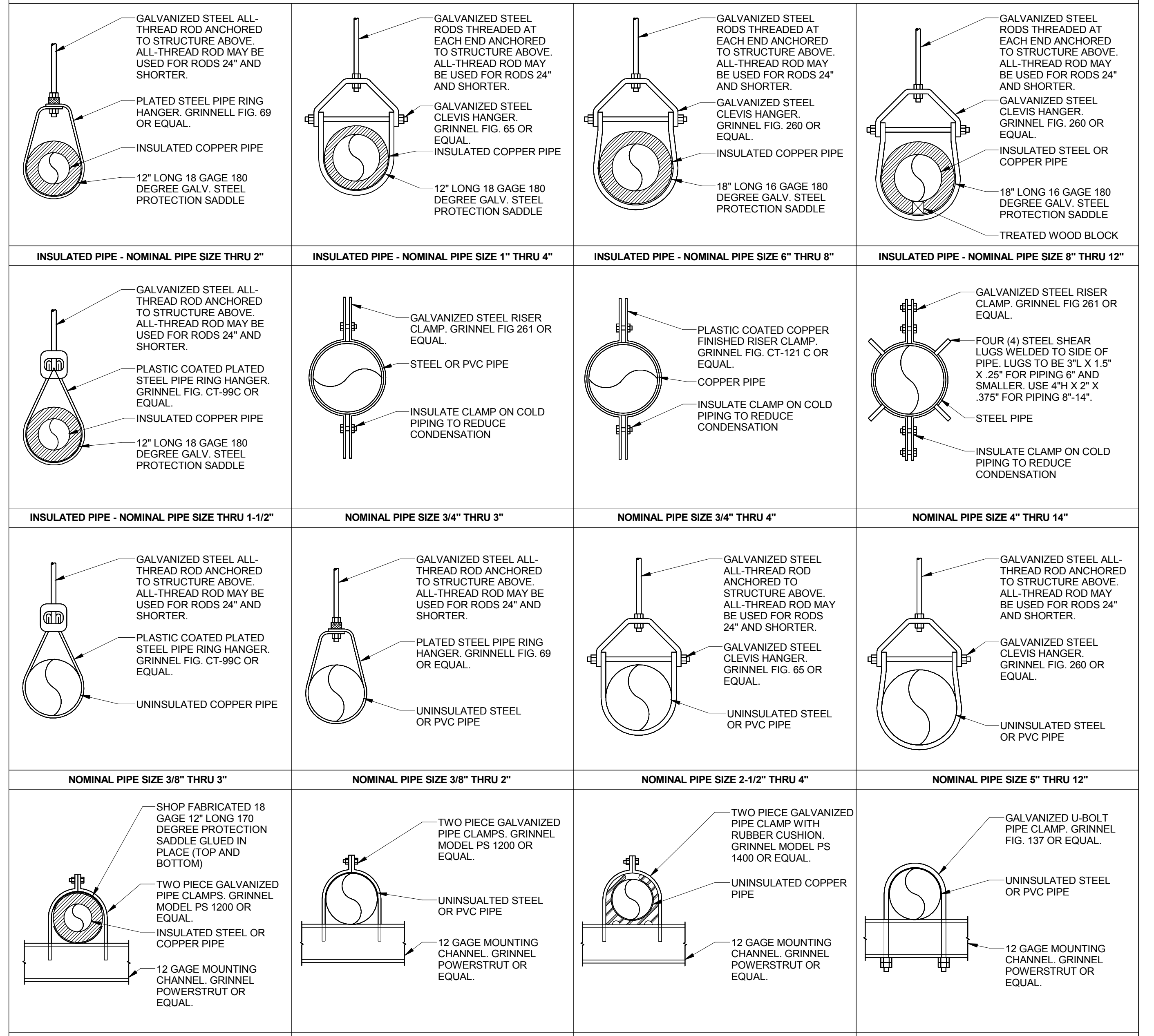
Scale: 1/8" = 1'-0"

these inches = one foot
 one and one half inches = one foot
 one inch = one foot
 three quarters inch = one foot
 one half inch = one foot
 three eighths inch = one foot
 one quarter inch = one foot
 one eighth inch = one foot



LABEL TEXT AND COLOR LEGEND					
PIPE SYSTEM DESCRIPTION	LETTER COLOR	BACKGROUND COLOR	PIPE SYSTEM DESCRIPTION	LETTER COLOR	BACKGROUND COLOR
ACID VENT	BLACK	YELLOW	SPRINKLER-FIRE	WHITE	RED
ACID WASTE	BLACK	YELLOW	STORM	WHITE	GREEN
CITY WATER	WHITE	GREEN	MEDICAL AIR	BLACK	YELLOW
COMPRESSED AIR	WHITE	BLUE	MEDICAL VACUUM	BLACK	WHITE
DEIONIZED WATER	WHITE	GREEN	NITROGEN	WHITE	BLACK
DOMESTIC COLD WATER	WHITE	GREEN	NITROUS OXIDE	WHITE	BLUE
DOMESTIC HOT WATER	BLACK	YELLOW	OXYGEN	WHITE	GREEN
DOMESTIC HOT WATER RETURN	BLACK	YELLOW			
NATURAL OR LP GAS	BLACK	YELLOW			
SANITARY DRAIN	WHITE	GREEN			

PIPE HANGERS AND PIPE CLAMP DETAILS AND NOTES



VERTICAL PIPING ALL TYPES AND SIZES		HORIZONTAL SCHEDULE 40 AND 80 STEEL PIPING			HORIZONTAL SCHEDULE 40 AND 80 PVC OR ABS PIPING		
PIPE SIZE	SUPPORT SPACING	PIPE SIZE	HANGER SPACING	HANGER ROD DIAMETER	PIPE SIZE	HANGER SPACING	HANGER ROD DIAMETER
3/8"	4'	1-1/4"	8'	3/8"	1/2"-2"	4'	3/8"
1/2" - 3/4"	6'	1-1/2"	9'	3/8"	2-1/2"-3"	4'	1/2"
1" - 1-1/2"	8'	2"	10'	3/8"	4"	4'	1/2"-5/8"
2" - 2-1/2"	10'	2-1/2"	11'	1/2"	6"-8"	4'	3/4"
3"	12'	4"-5"	12'	5/8"	10"-12"	12'	7/8"
4" - 14"	15'	6"-8"	12'	3/4"	14"	12'	1"
10"-12"	12'	14"	12'	1"			

PIPE HANGER AND SUPPORT NOTES

- PIPE HANGERS, SUPPORTS AND COMPONENTS SHALL BE MSS SP-58, FACTORY FABRICATED COMPONENTS.
 - POWER-ACTUATED DRIVE-PIN FASTENERS SHALL HAVE PULL-OUT AND SHEAR CAPACITIES APPROPRIATE FOR THE SUPPORTED LOADS AND BUILDING MATERIALS WHERE USED.
 - MECHANICAL ANCHOR FASTENERS SHALL BE INSERT TYPE WITH PULL-OUT AND SHEAR CAPACITIES APPROPRIATE FOR THE SUPPORTED LOADS AND BUILDING MATERIALS WHERE USED. STRUCTURAL STEEL CROSS MEMBERS, SUPPORTS AND BRACING SHALL BE ASTM A36/A 36M, STEEL PLATES, SHAPES AND BARS, STEEL MEMBERS SHALL BE PAINTED OR GALVANIZED.
 - CHANNEL SUPPORT SYSTEMS SHALL BE MFMA-2 FACTORY-FABRICATED COMPONENTS FOR FIELD ASSEMBLY AS MANUFACTURED BY GRINNELL, B-LINE OR EQUAL.
 - TOP BEAM C-CLAMPS SHALL BE MSS TYPE 19. SIDE BEAM OR CHANNEL CLAMPS SHALL BE MSS TYPE 20.
 - CENTER-BEAM CLAMPS SHALL BE MSS TYPE 21. C-CLAMPS SHALL BE MSS-23.
 - WELDED STEEL BRACKETS SHALL BE MSS TYPE 31 FOR UP TO 750 LB LOADS, MSS TYPE 32 FOR UP TO 1500 LBS AND MSS TYPE 33 FOR LOADS UP TO 3000 LBS.
 - SIDE-BEAM BRACKETS SHALL BE MSS TYPE 34.
 - PLATE LUGS SHALL BE MSS TYPE 57.
 - ALL RIGID ROD HANGERS SHALL HAVE A MEANS FOR VERTICAL ADJUSTMENT AFTER ERECTION.
 - HANGER INSPECTIONS SHALL BE PERFORMED IN ACCORDANCE WITH MSS-SP-99 (SECTION 7.7) AND ASME B31.1 (APPENDIX V).
- NOTE: PIPE INSULATION TO BE CONTINUOUS THRU PIPE HANGERS/BRACKETS.

ENGINEERS/CONSULTANTS:
 WOOLPERT, INC.
 343 FOUNTAINS PARKWAY
 SUITE 100
 FAIRVIEW HEIGHTS, IL 62208
 314-436-0865
 314-436-0884 fax

SCI ENGINEERING, INC
 130 POINT WEST BLVD.
 ST. CHARLES, MO 63301
 636-949-8200
 636-949-8269 fax

SEAL
 ARCHITECT:
Chiodini
 ARCHITECTS
 Architecture / Interior Design / Graphics
 1401 S. Brentwood Blvd. / Suite 075 / St. Louis, Missouri 63144
 314-725-5588 / arch@chiodini.com

Drawing Title
PLUMBING DETAILS

Approved: Project Director
 Approver

Project Title
VA HEALTH CARE SYSTEM

Location
 VAS 438-16-104 BLDG. 5 CHAPEL
 SIOUX FALLS, SD 57105

Date
 2017.03.13

Checked
 VAA

Drawn
 MFB

Project Number
 438-16-104 2016.052

Building Number
 5

Drawing Number
P501

OWNER

one and one half inches = one foot
one inch = one foot
three quarters inch = one foot
three eighths inch = one foot
one quarter inch = one foot
one eighth inch = one foot
3/13/2017 8:32:25 AM
C:\Local\Revit\Files\78966_Sioux Falls_VA...
CHANGING..._Drawing.plt
VA FORM 08-6231

FIXTURE ROUGH-IN SCHEDULE						
PLAN MARK	FIXTURE	HOT WATER	COLD WATER	WASTE	VENT	NOTES
WC	WATER CLOSET	-	1-1/4"	4"	2"	
LAV	LAVATORY	1/2"	1/2"	1-1/2"	1-1/2"	
SK	SINK	1/2"	1/2"	1-1/2"	1-1/2"	
FD	FLOOR DRAIN	-	-	3"	1-1/2"	1
MS	MOP SINK	1/2"	1/2"	2"	1-1/2"	
HB	HOSE BIBB	-	3/4"	-	-	

NOTES:
1.) FLOOR DRAINS SHALL HAVE TRAP SEAL INSTALLED SIMILAR TO SURE SEAL. TRAP SEAL INSERT WILL PREVENT SEWER GASES FROM ESCAPING TO OCCUPIED SPACES.

* SEE "ADA" GUIDELINES FOR ADDITIONAL INFORMATION, IN REGARDS TO ACCESSIBLE REQUIREMENTS WHERE APPLICABLE.

WALL HYDRANT/HOSE BIBB SCHEDULE									
PLAN MARK	MANUFACTURER	MODEL	TYPE	MOUNTING	OPERATION	FINISH	ACCESSORIES	NOTES	
HB	WOODFORD	26CP	CC	PROJ	WH	BR	VB-T	1	

LEGEND:
HB - HOSE BIBB
WHB - WALL HYDRANT BIBB

MOUNTING:
FL - FLUSH
PROJ - PROJECTING
REC - RECESSED

FINISH:
BR - ROUGH BRASS
CH - CHROME PLATE

OPERATION:
K - KEYS
WH - WHEEL HANDLE

ACCESSORIES:
CC - CLOSE COUPLED
FP - FREEZEPROOF
HC - HOT & COLD MIXER
LC - LOCKING COVER
VB - NON-REMOVABLE VACUUM BREAKER
VB-T - VACUUM BREAKER, FIELD TESTABLE

EQUIPMENT/FITTING SCHEDULE										
PLAN MARK	DESCRIPTION	MANUFACTURER	MODEL	SERVING	ADA COMPLIANT (YES/NO)	SENSOR (YES/NO)	OUTLET TYPE	FINISH	ACCESSORIES	NOTES
FV-1	FLUSH VALVE	ZURN	ZER6000AV-CPM	P-101	YES	YES	-	STD	A	1,2
FA-1	FAUCET	CHICAGO FAUCETS	116.975 AB.1	P-401	YES	YES	A	STD	B	1,3,4
FA-2	FAUCET	ZURN	Z831C4-XL-CT-18F	P-528	YES	NO	A	STD	-	1
FA-3	FAUCET	ZURN	Z831B4-XL-18F	P-513	YES	NO	A	STD	-	1
FA-4	FAUCET	CHICAGO FAUCETS	897-RC	P-502	NO	YES	A	STD	D	1

NOTES:
1.) SEE SPECIFICATIONS FOR ADDITIONAL REQUIREMENTS.
2.) BATTERY POWER.
3.) SELF-SUSTAINING POWER SYSTEM. WATER TURBINE GENERATES NECESSARY POWER.
4.) FAUCET COMES WITH EXTERNAL THERMOSTATIC MIXING VALVE.

PLAN MARK:
FA - FAUCET
FV - FLUSHMETER (VALVE)
SV - SHOWER MIXING VALVE
TMV - THERMOSTATIC MIXING VALVE
WSB - WASHER SERVICE BOX
USB - UTILITY SERVICE BOX

FINISH:
STD - MANUFACTURER'S STANDARD
P/P - PRIME (PAINT GRIP) AND EPOXY
PAINT FACE PLATE TO MATCH SURROUNDING SURFACE.

ACCESSORIES:
A - MANUAL PUSH BUTTON OVERRIDE
D - DEFLECTOR
B - METAL COVER
C - SYNTHETIC DIAPHRAGM ASSEMBLY
D - CHECK STOPS
E - SHOCK ARRESTOR
F - TRAP

OUTLET TYPE:
A - MANUFACTURER'S STANDARD
B - QUARTER TURN BALL VALVE

PLUMBING PIPING SCHEDULE																	
PIPING SYSTEM	LOCATION	PIPE MATERIALS						JOINING METHOD			HEAT TRACE	INSULATION		LABELS	NOTES		
		<SIZE	MAT.	T/S	>SIZE	MAT.	T/S	<SIZE	METHOD	>SIZE		METHOD	TH			TYPE	JACKET
POTABLE WATER	ABOVE GRADE	4"	CJ	1"	6"	-	-	2-1/2"	SW	3"	SWIGRV	-	1"	FGFE	ASJ	Y	1,2,3,4
WASTE & VENT	ABOVE FLOOR	8"	CI	SERV	8"	CI	SERV	8"	NHHS	8"	NHHS	-	-	-	-	-	1,2,4
MEDICAL AIR	ABOVE GRADE	4"	CJ	1"	6"	-	-	2-1/2"	SW	3"	SWIGRV	-	-	-	-	Y	2,4
OXYGEN	ABOVE GRADE	4"	CJ	1"	6"	-	-	2-1/2"	SW	3"	SWIGRV	-	-	-	-	Y	2,4

SCHEDULE NOTES:
1.) SEE SPECIFICATIONS FOR ADDITIONAL INFORMATION.
2.) PROVIDE IDENTIFICATION PER SPECIFICATIONS AND PIPE LABEL DETAIL.
3.) PROVIDE PLENUM RATED PVC FITTING COVERS ON FIBERGLASS INSTALLATIONS.
4.) SET SIZING ESCUTCHEONS ARE REQUIRED AT ALL PIPE ESCUTCHEON LOCATIONS WHERE EXPOSED TO VIEW. SEE SPECIFICATIONS FOR ADDITIONAL INFORMATION.

LEGEND:
ASJ ALL SERVICE JACKET
BR BRAZED W/SL FOS 15
CPCV CHLORINATED POLYVINYL CHLORIDE
CS CARBON STEEL
CI CAST IRON (CISPI 301)
CU COPPER
DI DUCTILE IRON
FE FLEXIBLE ELASTOMERIC (NITRILE)
FG FIBERGLASS
FW FUSION WELDED
GRV RIGID, GROOVED
GS GALVANIZED STEEL
HF HEAT FUSION
HT HIGH TEMPERATURE (PLENUM RATED)

HVY HEAVY DUTY
HS HUB & SPOUT
MECH MECHANICAL
NH NO-HUB W/ HEAVY DUTY COUPLINGS
PE HIGH DENSITY POLYETHYLENE
PP POLYPROPYLENE
PVC POLYVINYL CHLORIDE
SCR SCREWED
SOL SOLVENT WELDED
SS STAINLESS STEEL
SERV SERVICE WEIGHT
SW SWEAT
TIS TYPE OR SCHEDULE
WLD WELDED

GENERAL NOTES:
1.) ALL COLD PIPING SYSTEMS, COMPONENTS AND DWV SYSTEMS RECEIVING COLD DISCHARGE SHALL BE INSULATED (MINIMUM 1" THICK) WHETHER OR NOT SPECIFICALLY LISTED ABOVE. "COLD" SHALL BE DEFINED AS ANY SYSTEM THAT HAS THE POTENTIAL TO CONDENSE MOISTURE UNDER NORMAL OPERATING CONDITIONS. SEE SPECIFICATIONS FOR ADDITIONAL INFORMATION.

PLUMBING FIXTURE SCHEDULE														
PLAN MARK	FIXTURE	MANUFACTURER	MAKE	MODEL	MATERIAL	FINISH	ADA COMPLIANT (YES/NO)	TYPE	MOUNTING	DIMENSIONS	CARRIER/SUPPORT	EQUIPMENT/FITTING (SEE SCHEDULE)	TRIM	NOTES
P-101	WATER CLOSET	KOHLER	HIGHLINE	K-4405	VC	WH	YES	-	FLOOR MOUNTED	-	-	FV-1	AB	1,3,4
P-401	LAVATORY	KOHLER	KINGSTON	K-2007	VC	WH	YES	D	WALL HUNG	18"x17"	C	D FA-1	B,C,F(1-1/2")	1,2,4,5
P-502	MOP SINK	FIAT	-	MSB-2424	MS	STD	NO	-	FLOOR	24"x24"	-	FA-4	E,F(2")	1,4,6
P-513	SINK	ELKAY	ASANA	ELUH12	SS	STD	YES	D	UNDERMOUNT	12" DIA	-	D FA-3	B,C,F(1-1/2")	1,2,4
P-528	SINK	ELKAY	GOURMET	LR2222	SS	STD	YES	D	COUNTERTOP	22"x22"x7.5"	-	D FA-2	B,E,F(1-1/2")	1,4

NOTES:
1.) THE ABOVE MODELS ARE BASIS OF DESIGN ONLY. ALTERNATE MANUFACTURERS WITH EQUAL PRODUCTS WILL BE ALLOWED. SEE SPECIFICATIONS FOR ADDITIONAL INFORMATION AND REQUIREMENTS.
2.) SEE ARCHITECTURAL DRAWINGS FOR FIXTURE HEIGHTS AND ACCESSIBILITY REQUIREMENTS.
3.) BATTERY POWERED OPERATION. WATER CLOSET WITH MANUAL OVER-RIDE FEATURE.
4.) CAULK/SEAL AROUND PERIMETER OF FIXTURE UNIT.
5.) LAVATORY MUST BE MOUNTED WITH TOP OF RIM AT 34" IN ORDER TO COMPLY WITH ADA REQUIREMENTS FOR PROPER KNEE CLEARANCE.
6.) MOP SINK SHALL HAVE A HIGH QUALITY BASKET STRAINER INSTALLED.

MATERIALS:
AC - ACRYLIC FIBERGLASS
CH - CHROME PLATED BRASS
ES - ENAMELED STEEL
FG - FIBERGLASS GELCOAT
MS - MOLDED POLYMERSTONE
SS - STAINLESS STEEL
STD - STANDARD MATERIALS
STL - STEEL (WELDED)
VC - VITREOUS CHINA

FINISH:
AL - BRUSHED ALUMINUM
BR - BRONZE
CR - CHROME
OPT - OPTIONAL
PB - POLISHED BRASS
SPEC - SPECIAL FINISH
STD - MANUFACTURER'S STANDARD
WH - WHITE

TYPE:
A - SIPHON JET, ELONGATED
B - WASHOUT
C - WALL HUNG, B/L LEVEL
D - INSULATION, PREMOULDED VINYL JACKETING ON SUPPLY AND WASTE
E - DOUBLE COMPARTMENT
F - SUB-GRADE INSTALLATION

EQUIPMENT/FITTING:
A - FLUSH TANK
B - CANE BEZEL APPROX
C - GARBAGE DISPOSER
D - INSULATION, PREMOULDED VINYL JACKETING ON SUPPLY AND WASTE
E - CURTAIN WITH RODS AND HOOKS
F - GRAB BARS, FOLDING SEAT, HAND HELD SHOWER W/INLINE VACUUM BREAKER, 80'S S. HOSE, WALL BRACKET, STATIONARY SHOWER HEAD, SUPPLY ELBOW, DIVERTER & RECESSED SOAP DISH
G - HOSE WITH BRACKET & MOP HANGER
H - STAINLESS STEEL WALL GUARD
I - CONNECTION DEVICES, END CAPS & INSTALLATION CHAIRS
J - WALL REINFORCEMENT FOR HANGER ATTACHMENT
K - MANUFACTURER'S STD
L - GRAB BARS, FOLDING SEAT
M - FLUSHMETER (SEE SCHEDULE)
N - FIELD FABRICATED
O - MFR'S INSTALLATION CHAIRS
P - RECESS IN SUB-FLOOR

CARRIER/SUPPORT:
A - WATER CLOSET CARRIER
B - CHAIR CARRIER
C - CHAIR CARRIER WITH CONSOLIDATED ARMS
D - WALL REINFORCEMENT FOR HANGER ATTACHMENT
E - MANUFACTURER'S STD
F - FIELD FABRICATED
G - MFR'S INSTALLATION CHAIRS
H - RECESS IN SUB-FLOOR

TRIM:
A - TOILET SEAT (ANTI-MICROBIAL)
B - SUPPLIES WITH SCREWDRIVER STOPS
C - STRAINER/DRAIN GRID
D - STRAINER/DRAIN, POP-UP
E - STRAINER/DRAIN, BASKET TYPE
F - TRAP, 11 GAUGE, 1-1/4", 1-1/2", 2", 3" NPS, WITH CLEANOUT PLUG
G - OFFSET WASTE
H - CONTINUOUS WASTE
I - NO-SEEP #9 URETHANE/WAX RING
J - SHOCK ARRESTOR (A,B,C,D)
K - DURAGUARD TRANSVERSE GRATE
L - TRAFFIC DUTY FRAME WITH 3/2 ACCESS COVER
M - HEAVY DUTY REINFORCED LID
N - CAST IRON SOLID COVER & GALVANIZED TRASH BASKET

ENGINEERS/CONSULTANTS:
WOOLPERT, INC.
343 FOUNTAINS PARKWAY
SUITE 100
FAIRVIEW HEIGHTS, IL 62208
314-436-0865
314-436-0884 fax

SCI ENGINEERING, INC
130 POINT WEST BLVD.
ST. CHARLES, MO 63301
636-949-8200
636-949-8269 fax

SEAL

FINAL SUBMITTAL FOR CONSTRUCTION

3/13/2017
2017

ARCHITECT:
Chiodini
ARCHITECTS
Architecture / Interior Design / Graphics
1401 S. Brentwood Blvd. / Suite 575 / St. Louis, Missouri 63144
314-725-5588 / arch@chiodini.com

THE ARCHITECT EXPRESSLY RESERVES HIS/HER/CORB/LAW AND STATUTORY LAW COPYRIGHTS AND OTHER PROPERTY RIGHTS FOR THESE ARCHITECTURAL PLANS AND TECHNICAL DRAWINGS AND ANY DERIVATIVES THEREOF. THESE DRAWINGS AND DOCUMENTS ARE NOT TO BE REPRODUCED, CHANGED OR COPIED IN ANY MANNER WITHOUT THE EXPRESS WRITTEN CONSENT OF THE ARCHITECT. THE ARCHITECT'S NEGLIGENCE OR CARELESSNESS SHALL NOT BE A BASIS FOR LIABILITY WITHOUT FIRST OBTAINING WRITTEN PERMISSION AND CONSENT.

© COPYRIGHT PENDING

Drawing Title
PLUMBING SCHEDULES

Approved: Project Director
Approver

Project Title
VA HEALTH CARE SYSTEM

Project Number
438-16-104 2016.052

Building Number
5

Drawing Number
P601

Date
2017.03.13

Checked
VAA

Drawn
MFB

OWNER