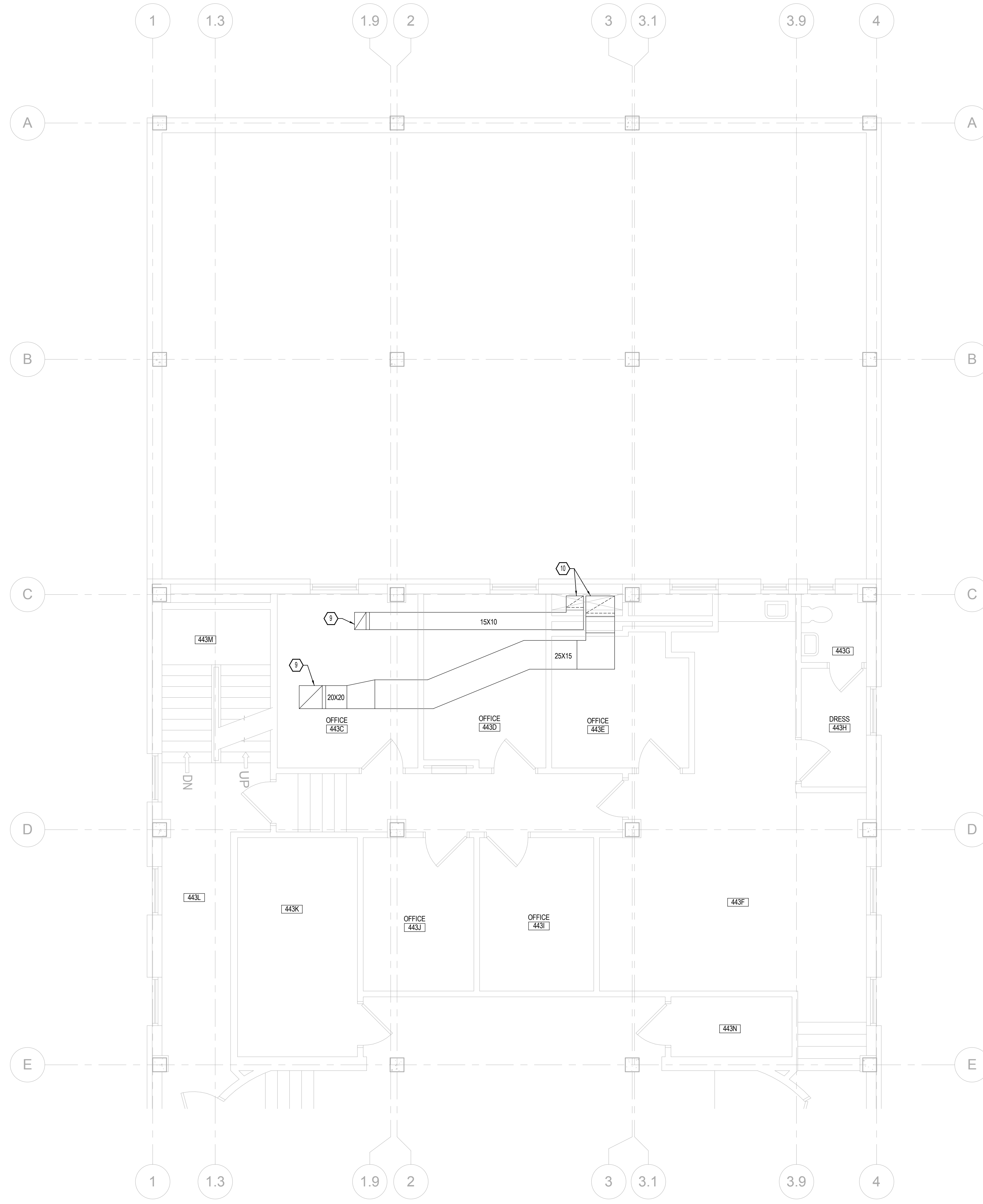


KEYED NOTES

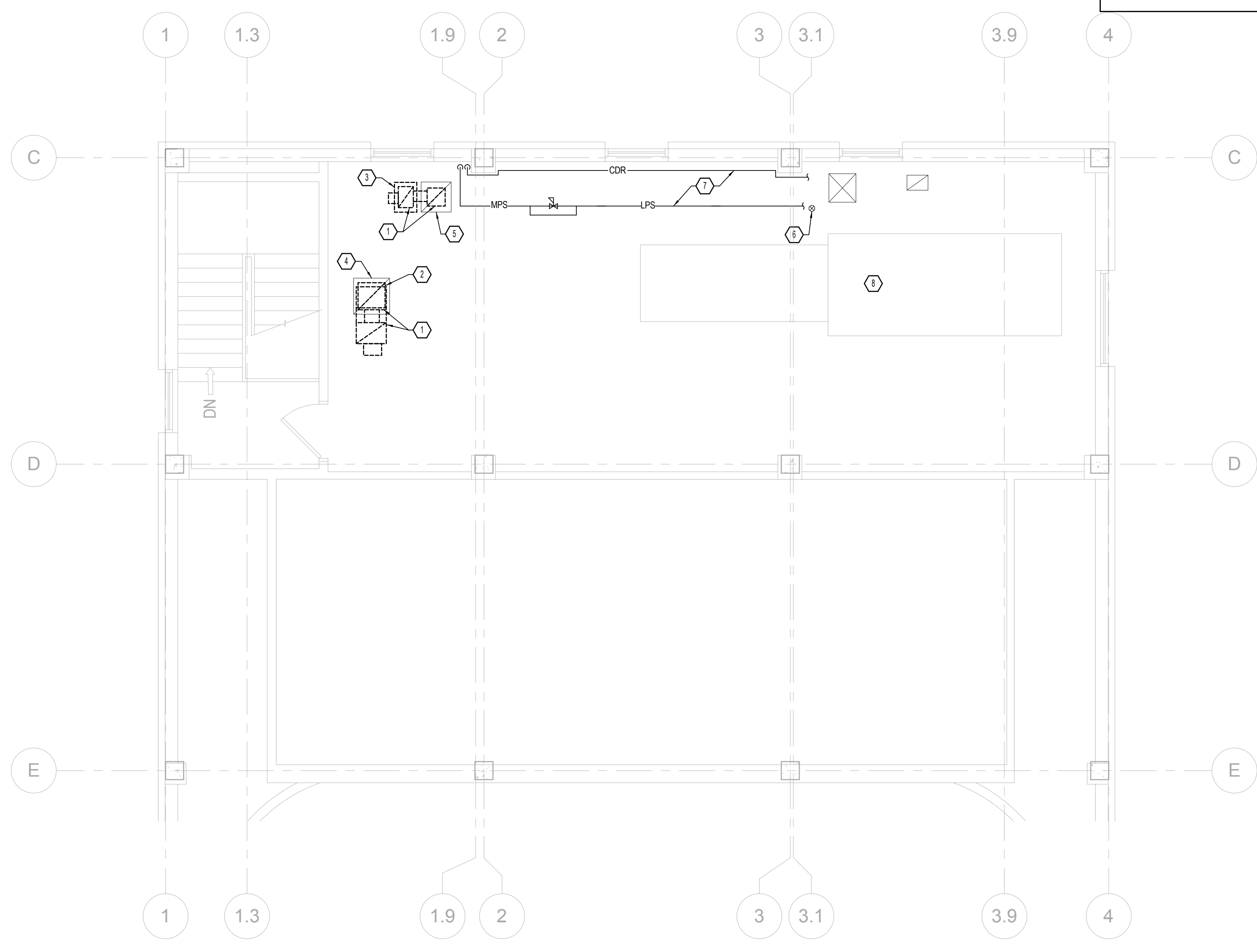
1. REMOVE EXISTING FLOOR MOUNTED EXHAUST FAN AND ASSOCIATED INTAKE AND DISCHARGE DUCTWORK.
2. EXISTING EXHAUST PENETRATION AND HOOD ON ROOF TO REMAIN AND BE REUSED.
3. EXISTING HOOD ON ROOF TO BE REMOVED AND ROOF OPENING PATCHED. SEE ARCHITECTURAL PLANS.
4. 2ND FLOOR OPENING AND DUCTWORK BELOW TO REMAIN FOR TIE IN TO NEW EXHAUST DUCTWORK AS INDICATED ON M-401.
5. 20X20 FLOOR OPENING AND DUCTWORK BELOW TO REMAIN FOR TIE IN TO NEW EXHAUST DUCTWORK AS INDICATED ON M-401.
6. EXISTING FLOOR DRAIN TO REMAIN.
7. EXISTING STEAM AND CONDENSATE RETURN PIPING TO REMAIN FOR TIE IN TO NEW PIPING AS INDICATED ON M-401.
8. EXISTING AIR HANDLING UNIT AND ALL ASSOCIATED DUCTWORK AND PIPING TO REMAIN.
9. EXISTING EXHAUST DUCTWORK UP TO 5TH FLOOR TO REMAIN.
10. EXISTING EXHAUST DUCTWORK DOWN TO THIRD FLOOR TO REMAIN.

GENERAL DEMO NOTES

1. REMOVE ALL ASSOCIATED CONTROLS, THERMOSTATS, CONDUIT, WIRING ASSOCIATED WITH THE HVAC SYSTEMS BEING DEMOLISHED. REMOVE ALL ABANDONED PNEUMATIC PIPING BACK TO THE DISTRIBUTION PANEL AND CAP AND SEAL. ALL AS REQUIRED TO ALLOW EXISTING PNEUMATIC SYSTEM TO REMAIN OPERATIONAL.
2. ALL REFRIGERANT SHALL BE RECLAIMED PER STATE AND FEDERAL CODES AND EPA REGULATIONS.
3. PROVIDE TEMPORARY FILTER ELEMENTS OVER ACTIVE RETURN GRILLES OF THE PULMONARY WING TO PREVENT CONSTRUCTION DEBRIS FROM ENTERING THE MAIN HVAC SYSTEM.
4. CONSTRUCTION PHASING PLANS SHALL BE CLEARLY DOCUMENTED TO ALLOW THE RESPIRATORY WING TO BE ACTIVE FOR AS LONG AS POSSIBLE.



1 ENLARGED MECHANICAL HVAC AND PIPING FOURTH FLOOR DEMO PLAN
 MD401 1/4" = 1'-0" 0 4' 8' 16'



2 ENLARGED MECHANICAL HVAC AND PIPING FIFTH FLOOR DEMO PLAN
 MD401 1/4" = 1'-0" 0 4' 8' 16'

Scale: As indicated

ENGINEERS/CONSULTANTS:	
WOOLPERT, INC. 343 FOUNTAINS PARKWAY SUITE 100 FAIRVIEW HEIGHTS, IL 62208 314-436-0865 314-436-0884 fax	SCI ENGINEERING, INC 130 POINT WEST BLVD. ST. CHARLES, MO 63301 636-949-8200 636-949-8269 fax
FINAL SUBMITTAL FOR CONSTRUCTION	



ARCHITECT:

Chiodini
 ARCHITECTS

Architecture / Interior Design / Graphics
 1401 S. Brentwood Blvd. / Suite 575 / St. Louis, Missouri 63144
 314-725-5588 / arch@chiodini.com

THE ARCHITECT EXPRESSLY RESERVES HIS COMMON LAW AND STATUTORY LAW COPYRIGHTS AND OTHER PROPERTY RIGHTS FOR THESE ARCHITECTURAL, ENGINEERING, MECHANICAL, ELECTRICAL AND TECHNICAL DOCUMENTS AND ANY DERIVATIVES THEREOF. THESE DRAWINGS AND DOCUMENTS ARE NOT TO BE REPRODUCED, CHANGED OR COPIED IN ANY MANNER WITHOUT THE EXPRESS WRITTEN CONSENT OF LEADS OR CHANGES. THESE DOCUMENTS ARE NOT TO BE ASSIGNED TO ANY PARTY WITHOUT FIRST OBTAINING THE ARCHITECT'S WRITTEN PERMISSION AND CONSENT.

© COPYRIGHT PENDING

Drawing Title	ENLARGED MECH. FOURTH & FIFTH FLR. DEMO PLANS
Approved: Project Director	Approver

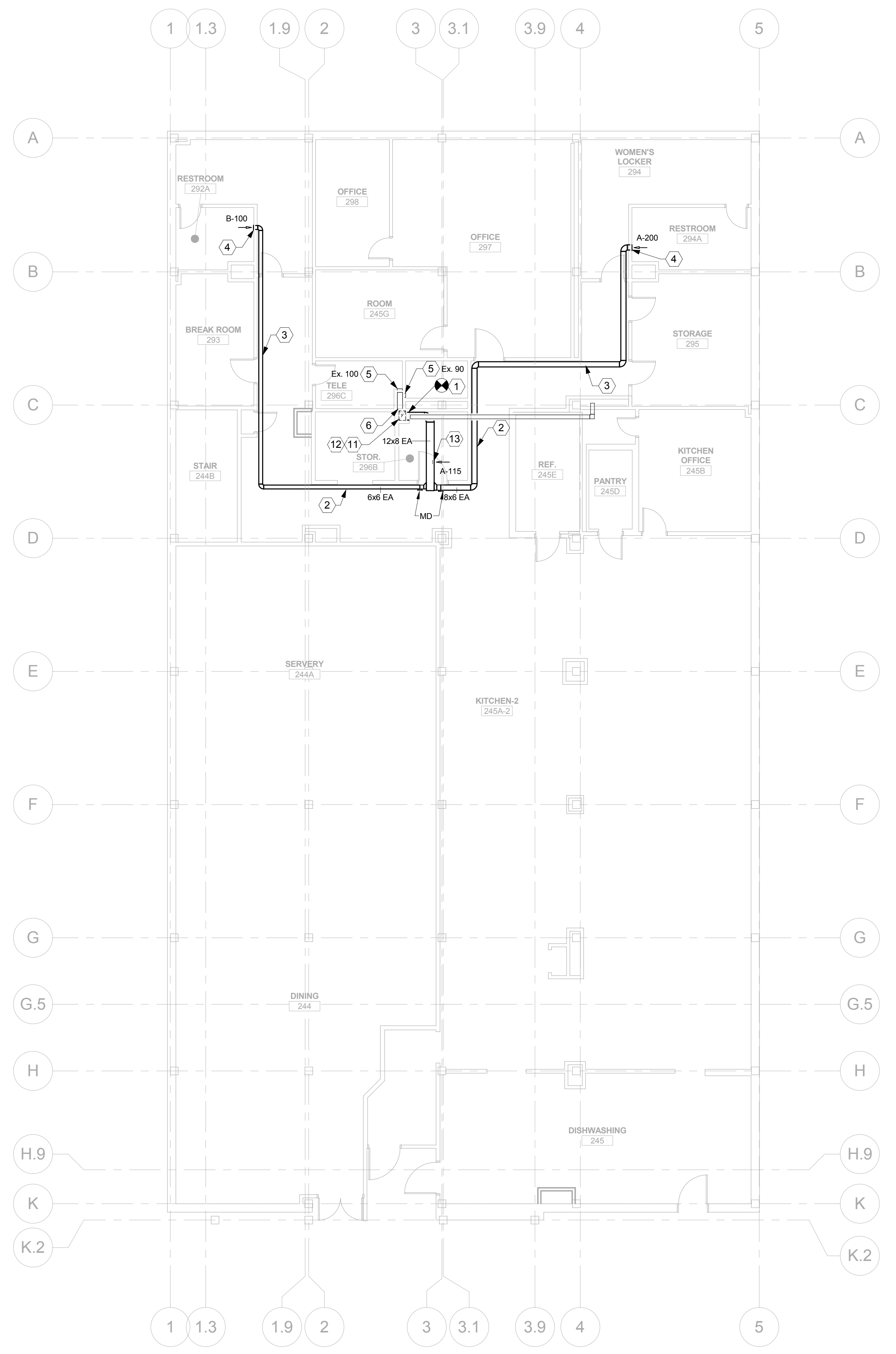
Project Title	VA HEALTH CARE SYSTEM
Project Number	438-16-104 2016.052
Building Number	5
Drawing Number	MD401
Date	2017.03.13
Checked	AWS
Drawn	MCB



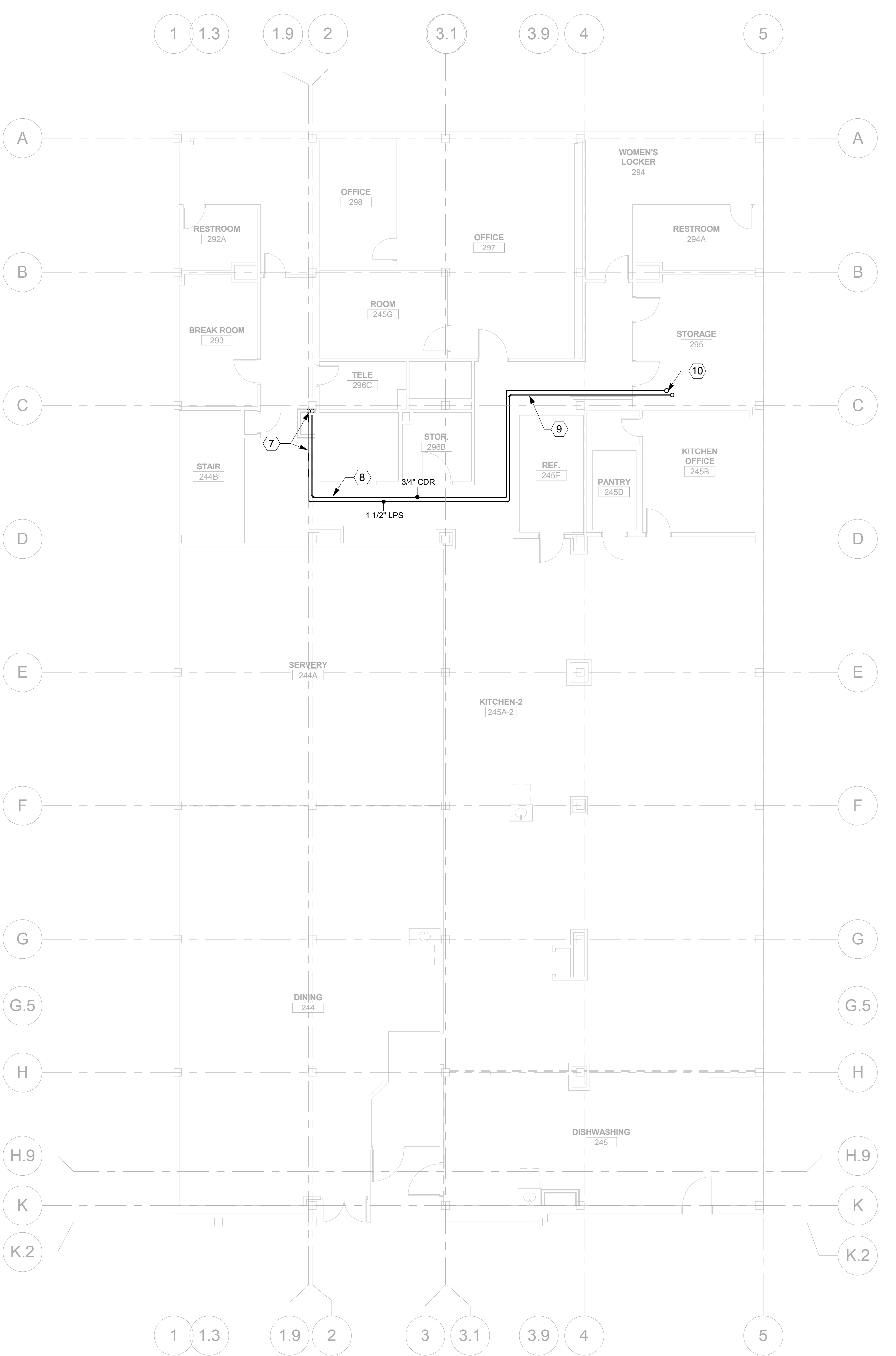
Revisions:	Date

VA FORM 08-6231

three inches = one foot
one and one half inches = one foot
one inch = one foot
three quarters inch = one foot
one half inch = one foot
three eighths inch = one foot
one quarter inch = one foot
one eighth inch = one foot
3/13/2017 4:26:49 PM
C:\Local Rent Files\7696_Sioux Falls VA Chapel_MP_Central_2016_mbehlmann.rvt
VA FORM 08-6231



1 MECHANICAL HVAC SECOND FLOOR PLAN
1/8" = 1'-0" 0 4 8 16



2 MECHANICAL PIPING SECOND FLOOR PLAN
1/8" = 1'-0" 0 4 8 16

- KEYED NOTES**
- CONNECT TO EXISTING EXHAUST DUCT IN CHASE AND EXTEND EXPOSED DUCTWORK TIGHT TO CEILING ACROSS STORAGE ROOM INTO CORRIDOR.
 - DUCTWORK TO BE RUN EXPOSED TIGHT TO WALL AS HIGH AS POSSIBLE. PROVIDE OFFSETS AS NECESSARY TO AVOID CONFLICTS.
 - OFFSET DUCTWORK AS NECESSARY TO AVOID EXISTING DUCTWORK AND OBSTRUCTIONS IN CORRIDOR.
 - EXTEND DUCT TO SIDEWALL GRILL AS INDICATED INTO RESTROOM.
 - BALANCE EXISTING GRILLES AS INDICATED.
 - BALANCE EXISTING GRILLES IN RESTROOMS ON FIRST FLOOR BELOW TO 75 CFM EACH (2 TOTAL).
 - CONNECT TO EXISTING 3" MPS LINE AND 1-1/4" CDR LINE IN CHASE. PROVIDE NEW PRESSURE REDUCING STATION IN CORRIDOR AS SHOWN ON M701.
 - EXTEND STEAM AND CONDENSATE RETURN PIPING EXPOSED IN CORRIDOR AS HIGH AS POSSIBLE.
 - STEAM AND CONDENSATE RETURN PIPING TO BE ROUTED ABOVE CEILING OF KITCHEN AREA. REMOVE AND REINSTALL CEILING TILES AS NECESSARY.
 - STEAM AND CONDENSATE RETURN UP TO ROOFTOP UNIT. LOCATE STEAM AND CONDENSATE VALVING INCLUDING CONTROLS VALVES ABOVE CEILING IN STORAGE ROOM.
 - PROVIDE FIRE DAMPER AT FLOOR SLAB DUCT PENETRATION ABOVE AND AT FLOOR PENETRATION BELOW.
 - CLEAN EXISTING DUCTWORK AND GRILLES ASSOCIATED WITH EXHAUST SYSTEM (EF-1).
 - MOUNT GRILLE TO SIDE OF DUCT. GRILLE TO HAVE OPPOSED BLADE BALANCING DAMPER.

- GENERAL NOTES**
- PROVIDE MANUAL BALANCING DAMPERS IN RUNOUTS TO ALL DIFFUSERS OR GRILLES UNLESS LOCATED ABOVE A HARD CEILING. IN WHICH CASE, OPPOSED BLADE BALANCING DAMPERS ARE PROVIDED AT THE DIFFUSER OR GRILLE AND INDICATED ON THE AIR DEVICE SCHEDULE.
 - SEE MECHANICAL PIPING AND CONTROL DIAGRAMS ON M701 AND M702 FOR STEAM, CONDENSATE RETURN AND HOT WATER BRANCH PIPE SIZES, VALVING AND APPURTENANCES.
 - ALL WORK ASSOCIATED WITH THE SECOND FLOOR KITCHEN AREA AND THIRD FLOOR RESPIRATORY CARE/PULMONARY AREA MUST BE COMPLETED DURING THE EVENING, NIGHTS OR ON THE WEEKENDS. SEE DIV 1 SPECIFICATIONS FOR SPECIFIC REQUIREMENTS.

Scale: 1/8" = 1'-0"

ENGINEERS/CONSULTANTS:

WOOLPERT, INC.
343 FOUNTAINS PARKWAY
SUITE 100
FAIRVIEW HEIGHTS, IL 62208
314-436-0865
314-436-0884 fax

SCI ENGINEERING, INC
130 POINT WEST BLVD.
ST. CHARLES, MO 63301
636-949-8200
636-949-8269 fax

FINAL SUBMITTAL FOR CONSTRUCTION



ARCHITECT:

Chiodini
ARCHITECTS
Architecture / Interior Design / Graphics
1401 S. Brentwood Blvd. / Suite 575 / St. Louis, Missouri 63144
314-725-5588 / arch@chiodini.com

THE ARCHITECT EXPRESSLY RESERVES HIS/HER/CORPORATE/LAW AND STATUTORY LAW COPYRIGHTS AND OTHER PROPERTY RIGHTS FOR THESE ARCHITECTURAL, ENGINEERING, TECHNICAL, DESIGN AND ANY DERIVATIVES THEREOF. THESE DRAWINGS AND DOCUMENTS ARE NOT TO BE REPRODUCED, CHANGED OR COPIED IN ANY MANNER WITHOUT THE EXPRESS WRITTEN CONSENT OF CHIODINI ARCHITECTS. NO PART OF THESE DRAWINGS OR ANY PART THEREOF SHALL BE LOANED, REPRODUCED, COPIED, OR IN ANY MANNER USED WITHOUT THE WRITTEN PERMISSION AND CONSENT OF CHIODINI ARCHITECTS.

© COPYRIGHT PENDING

Drawing Title
MECHANICAL SECOND FLOOR PLAN

Approved: Project Director
Approver

Project Title
VA HEALTH CARE SYSTEM

Project Number
438-16-104 2016.052

Building Number
5

Drawing Number
M102

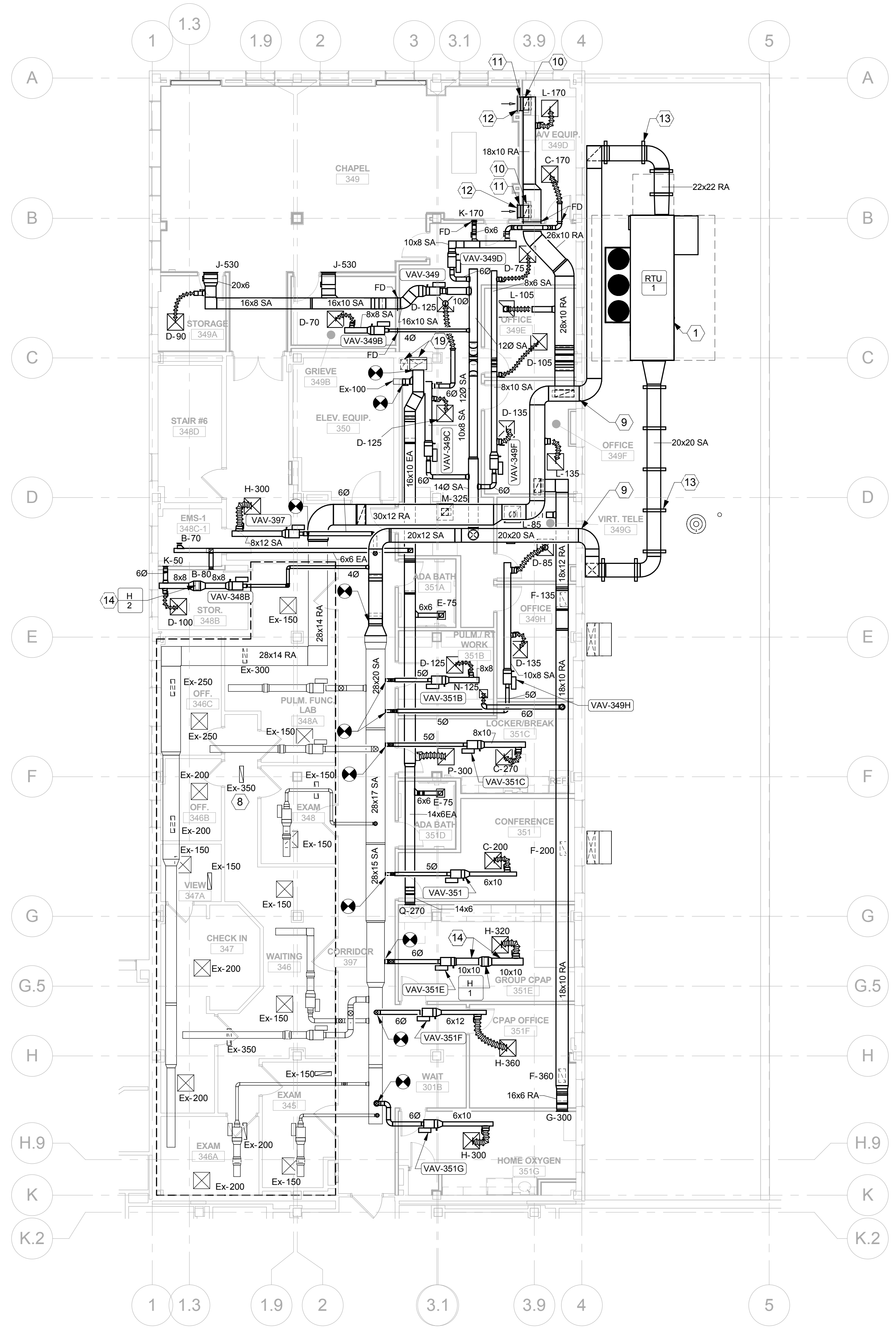
Location
VAS 438-16-104 BLDG. 5 CHAPEL
SIOUX FALLS, SD 57105

Date
2017.03.13

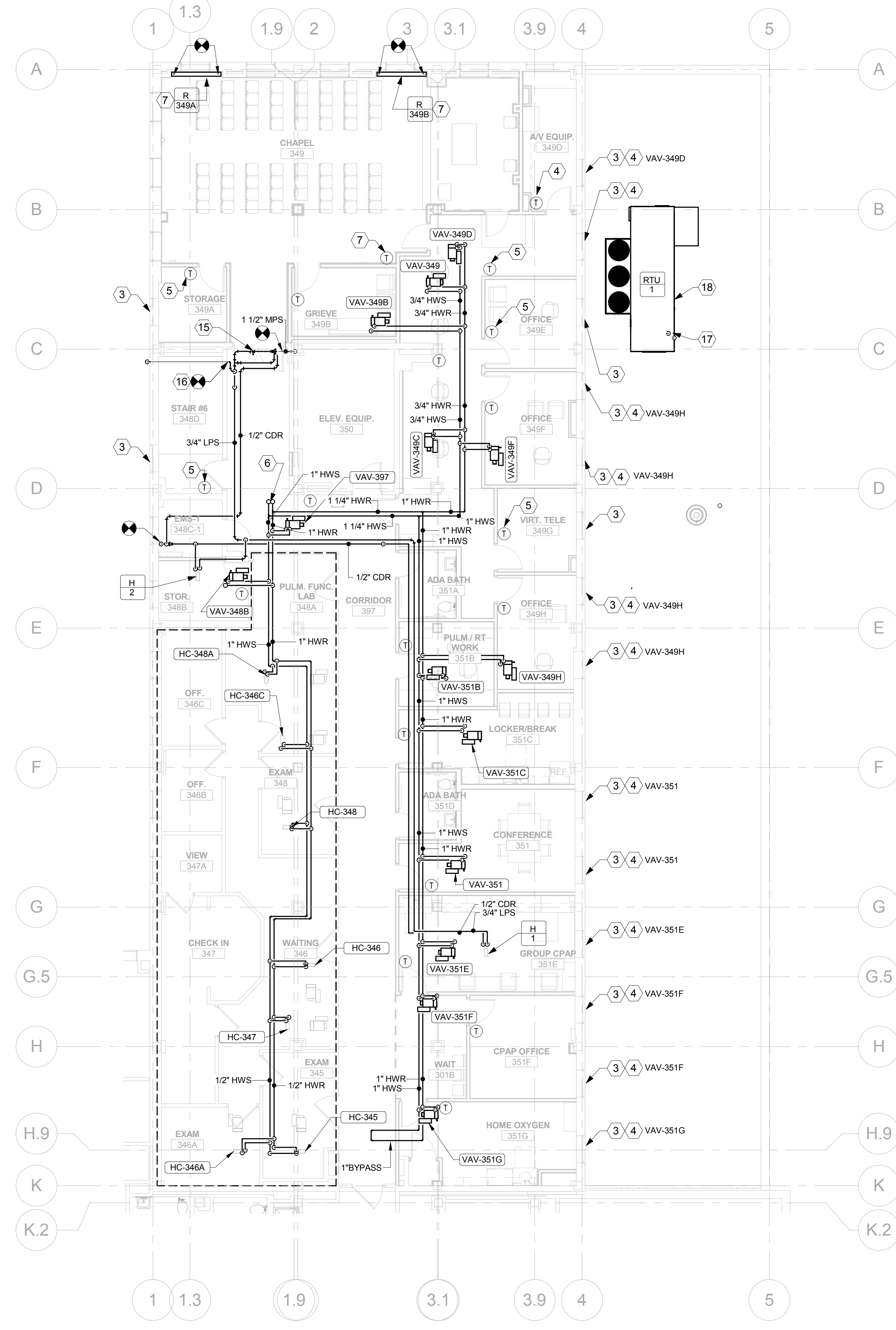
Checked
AWS

Drawn
MCB

OWNER



1 MECHANICAL HVAC THIRD FLOOR PLAN
M103 1/8" = 1'-0" 0 4 8 16'



2 MECHANICAL PIPING THIRD FLOOR PLAN
M103 1/8" = 1'-0" 0 4 8 16'

- KEYED NOTES**
- SEE ARCHITECTURAL AND STRUCTURAL PLAN FOR ROOF TOP UNIT SUPPORT REQUIREMENTS. UNIT SHALL BE ELEVATED A MIN OF 24" ABOVE THE ROOF. UNIT CLEARANCE REQUIREMENTS.
 - INTERLOCK STEAM CONVECTOR CONTROL VALVE(S) WITH ASSOCIATED VAV TERMINAL UNIT DDC THERMOSTAT. TERMINAL UNIT NUMBER IS LISTED NEXT TO KEYED NOTE.
 - PROVIDE HEATING ONLY DDC THERMOSTAT INTERLOCKED WITH ASSOCIATED STEAM CONVECTOR CONTROL VALVE. LABEL THERMOSTAT "HEATING ONLY."
 - 1-1/2" HWS/R DOWN FROM 5TH FLOOR MECHANICAL ROOM.
 - PROVIDE DDC CONTROL VALVE FOR NEW STEAM RADIATORS AND INTERLOCK WITH VAV-348 DDC THERMOSTAT.
 - BALANCE EXISTING SUPPLY AND RETURN GRILLES IN THE RESPIRATORY/PULMONARY WING TO THE AIRFLOWS INDICATED. AIR DEVICE INDICATED WITH "EX" (TYPICAL).
 - ROUTE DUCTWORK ALONG WALL ABOVE WINDOWS AND PENETRATE THRU EXTERIOR WALL APPROXIMATELY 2'-4" ABOVE THE TOP OF THE WINDOW. DUCTWORK TO BE CENTERED ABOVE WINDOW OPENING.
 - 20X8 RETURN DUCT THRU CHASE. PROVIDE MANUAL BALANCING DAMPER AT 20X8 RUNOUT BELOW RETURN MAIN ACCESSIBLE ABOVE LAY-IN CEILING.
 - 20X20 DUCT IN HORIZONTAL NEAR FLOOR LEVEL CONNECTED TO 20X8 VERTICAL RUN. DUCT TO CONNECT TO DECORATIVE RETURN GRILLE. COORDINATE REQUIREMENTS WITH ARCHITECTURAL PLANS. CONNECTED DUCT SIZE MAY BE SMALLER THAN ACTUAL GRILLE SIZE.
 - DECORATIVE WALL RETURN GRILLES NEAR FLOOR LEVEL PROVIDED BY ARCHITECTURAL. AIRFLOWS AT EACH GRILLE TO BE BALANCED TO 685 CFM.
 - PROVIDE DUCT MOUNTING PEDESTALS ON ROOF. MOUNTING PEDESTALS TO BE GALVANIZED STEEL SLIDE CHANNEL WITH CONTINUOUSLY THREADED RODS AND GALVANIZED STEEL DUCT SLIDE ASSEMBLY BY ROOF PRODUCTS AND SYSTEMS (RPS) OR APPROVED EQUAL. THE DUCT SUPPORTS SHALL BE SECURED DIRECTLY TO A STANDARD EQUIPMENT RAIL BASE. RAIL TO BE A MINIMUM OF 12 INCH HIGH. INSTALL DUCTWORK AT AN ELEVATION TO ALLOW A MINIMUM OF 3 FEET BELOW DUCT FOR ACCESS TO BACK SIDE OF ROOF TOP UNIT. SEE ARCHITECTURAL PLANS FOR EQUIPMENT RAIL FLASHING DETAILS.
 - PROVIDE A MINIMUM OF 3 FEET OF STRAIGHT DUCT UPSTREAM OF HUMIDIFIER AND 3 FEET OF STRAIGHT DUCT DOWNSTREAM OF HUMIDIFIER.
 - PROVIDE NEW PRESSURE REDUCING STATION AND ASSOCIATED VALVING AS INDICATED ON M702.
 - CONNECT TO EXISTING VENT AT POINT INDICATED.
 - EXTEND STEAM AND CONDENSATE RETURN PIPING UP THROUGH ROOF TO STEAM OIL CONNECTION ON UNIT. PROVIDE PIPE BOOT PER DETAIL ON M501.
 - PROVIDE CONDENSATE DRAIN P-TRAP PER DETAIL ON M501 AND EXTEND TO NEAREST ROOF DRAIN.
 - PROVIDE FIRE DAMPER AT FLOOR SLAB DUCT PENETRATION ABOVE BETWEEN THE THIRD AND FOURTH FLOOR.

- GENERAL NOTES**
- PROVIDE MANUAL BALANCING DAMPERS IN RUNOUTS TO ALL DIFFUSERS OR GRILLES UNLESS LOCATED ABOVE A HARD CEILING. IN WHICH CASE, OPPOSED BLADE BALANCING DAMPERS ARE PROVIDED AT THE DIFFUSER OR GRILLE AND INDICATED ON THE AIR DEVICE SCHEDULE.
 - SEE MECHANICAL PIPING AND CONTROL DIAGRAMS ON M701 AND M702 FOR STEAM, CONDENSATE RETURN AND HOT WATER BRANCH PIPE SIZES, VALVING AND APPURTENANCES.
 - ALL WORK ASSOCIATED WITH THE SECOND FLOOR KITCHEN AREA AND THIRD FLOOR RESPIRATORY CARE/PULMONARY AREA MUST BE COMPLETED DURING THE EVENING, NIGHTS OR ON THE WEEKENDS. SEE DIV 1 SPECIFICATIONS FOR SPECIFIC REQUIREMENTS.

three eighths inch = one foot
one half inch = one foot
one quarter inch = one foot
one eighth inch = one foot

C:\Local\rent\Files\7696_Sioux Falls VA Chapel_MP_Central_2016_mblm\m103.dwg
3/14/2017 10:51:45 AM

ENGINEERS/CONSULTANTS:

WOOLPERT, INC. 343 FOUNTAINS PARKWAY SUITE 100 FAIRVIEW HEIGHTS, IL 62208 314-436-0865 314-436-0884 fax	SCI ENGINEERING, INC 130 POINT WEST BLVD. ST. CHARLES, MO 63301 636-949-8200 636-949-8269 fax
--	---

FINAL SUBMITTAL FOR CONSTRUCTION



ARCHITECT:

Chiodini ARCHITECTS
Architecture / Interior Design / Graphics
1401 S. Brentwood Blvd. / Suite 575 / St. Louis, Missouri 63144
314-725-5588 / arch@chiodini.com

THE ARCHITECT EXPRESSLY RESERVES HIS COMMON LAW AND STATUTORY LAW COPYRIGHTS AND OTHER PROPERTY RIGHTS FOR THESE ARCHITECTURAL, ENGINEERING, TECHNICAL, DOCUMENTS AND ANY DERIVATIVES THEREOF. THESE DRAWINGS AND DOCUMENTS ARE NOT TO BE REPRODUCED, CHANGED OR COPIED IN ANY MANNER WITHOUT THE EXPRESS WRITTEN CONSENT OF CHIODINI ARCHITECTS. CHIODINI ARCHITECTS AND ITS REPRESENTATIVES SHALL NOT BE LIABLE FOR ANY DAMAGES, INCLUDING REASONABLE ATTORNEY'S FEES, ARISING FROM ANY SUCH REPRODUCTION OR USE WITHOUT THE EXPRESS WRITTEN PERMISSION AND CONSENT OF CHIODINI ARCHITECTS.

© COPYRIGHT PENDING

Drawing Title
MECHANICAL THIRD FLOOR PLAN

Approved: Project Director
Approver

Project Title VA HEALTH CARE SYSTEM	Project Number 438-16-104 2016.052	OWNER
Location VAS 438-16-104 BLDG. 5 CHAPEL SIOUX FALLS, SD 57105	Building Number 5	
Date 2017.03.13	Checked AWS	Drawn MCB
Drawing Number M103		

Scale: 1/8" = 1'-0"