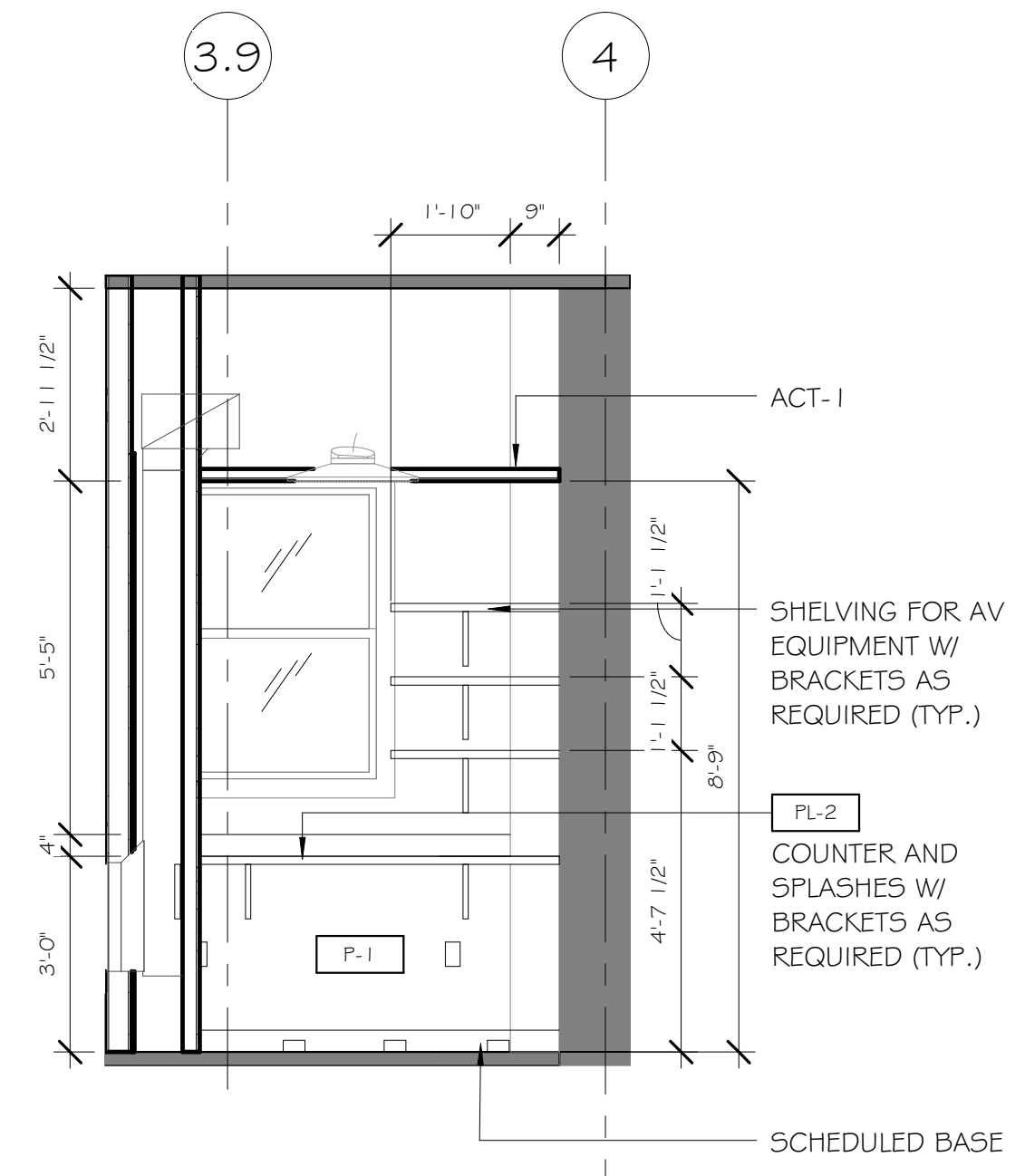
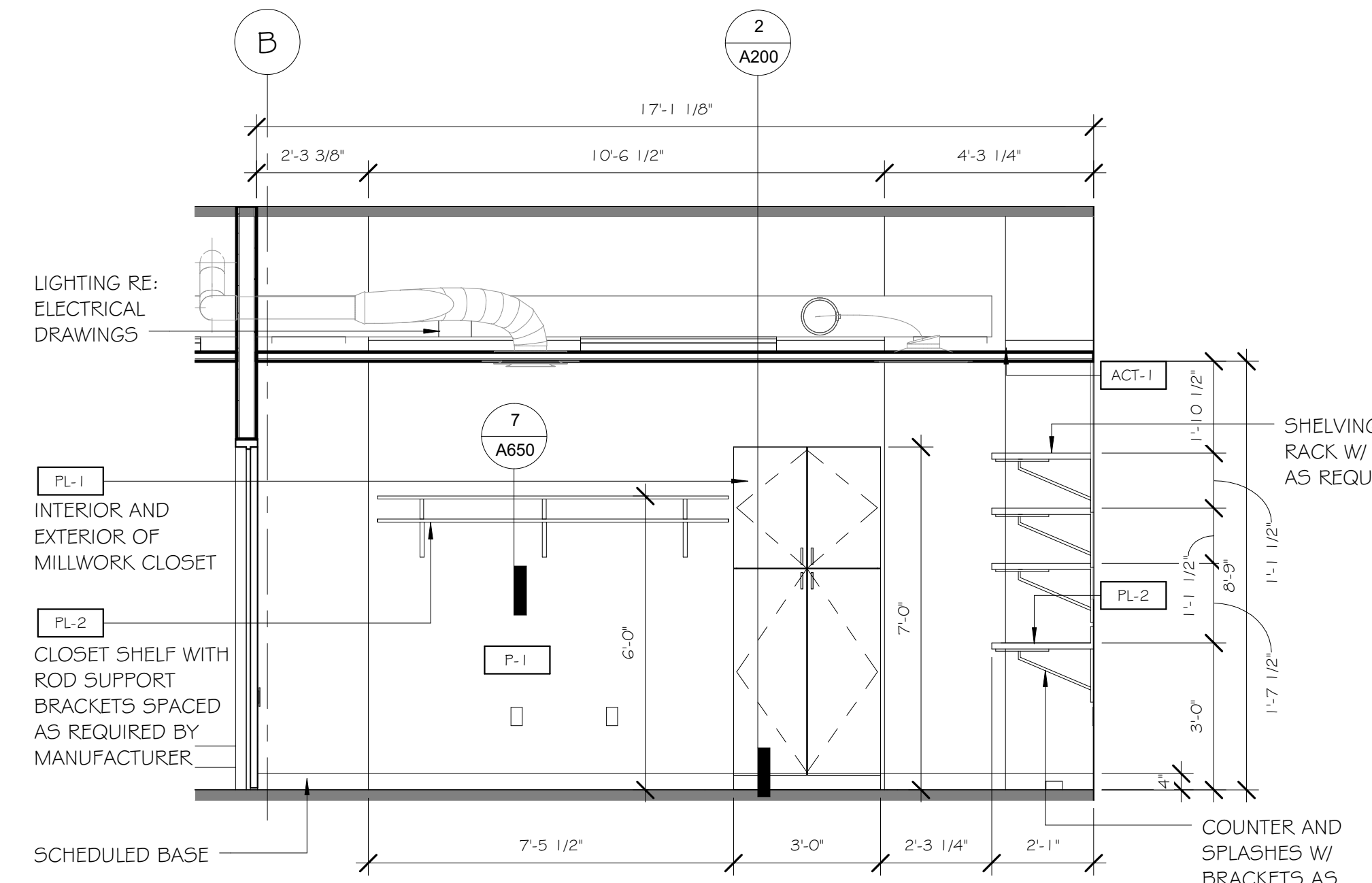


**INTERIOR ELEVATION NOTES:**

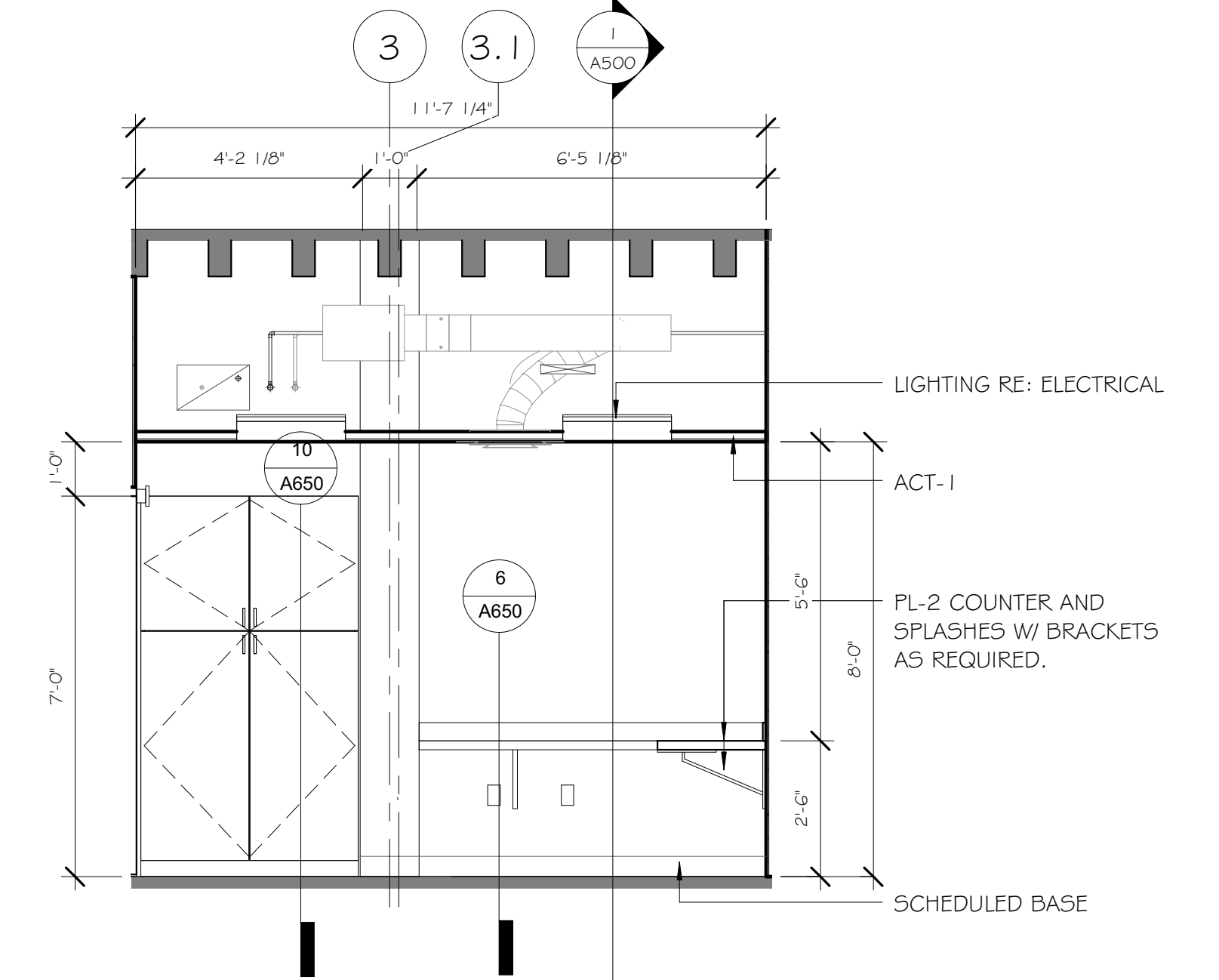
1. PROVIDE REQUIRED FIRE RETARDANT TREATED WOOD BLOCKING AT CASEWORK, COUNTERTOPS, T.V. AND ALL OTHER ITEMS ATTACHING OR ANCHORED TO THE WALL.
2. ALL WOOD VENEER CABINETS TO HAVE VERTICAL GRAIN AND BOOK MATCH DOORS.



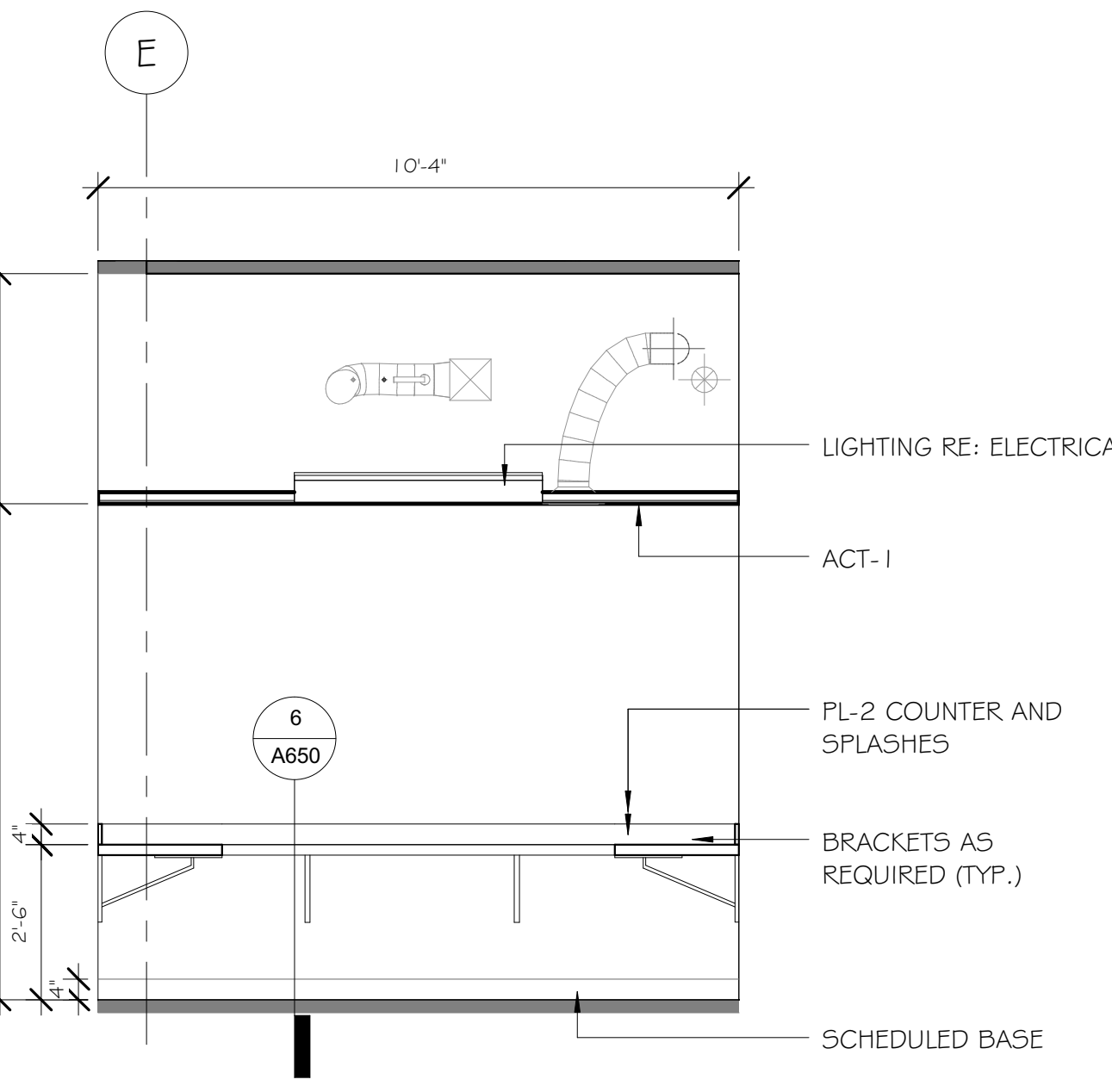
1 AV ROOM - NORTH INTERIOR ELEVATION  
A603 3/8" = 1'-0"



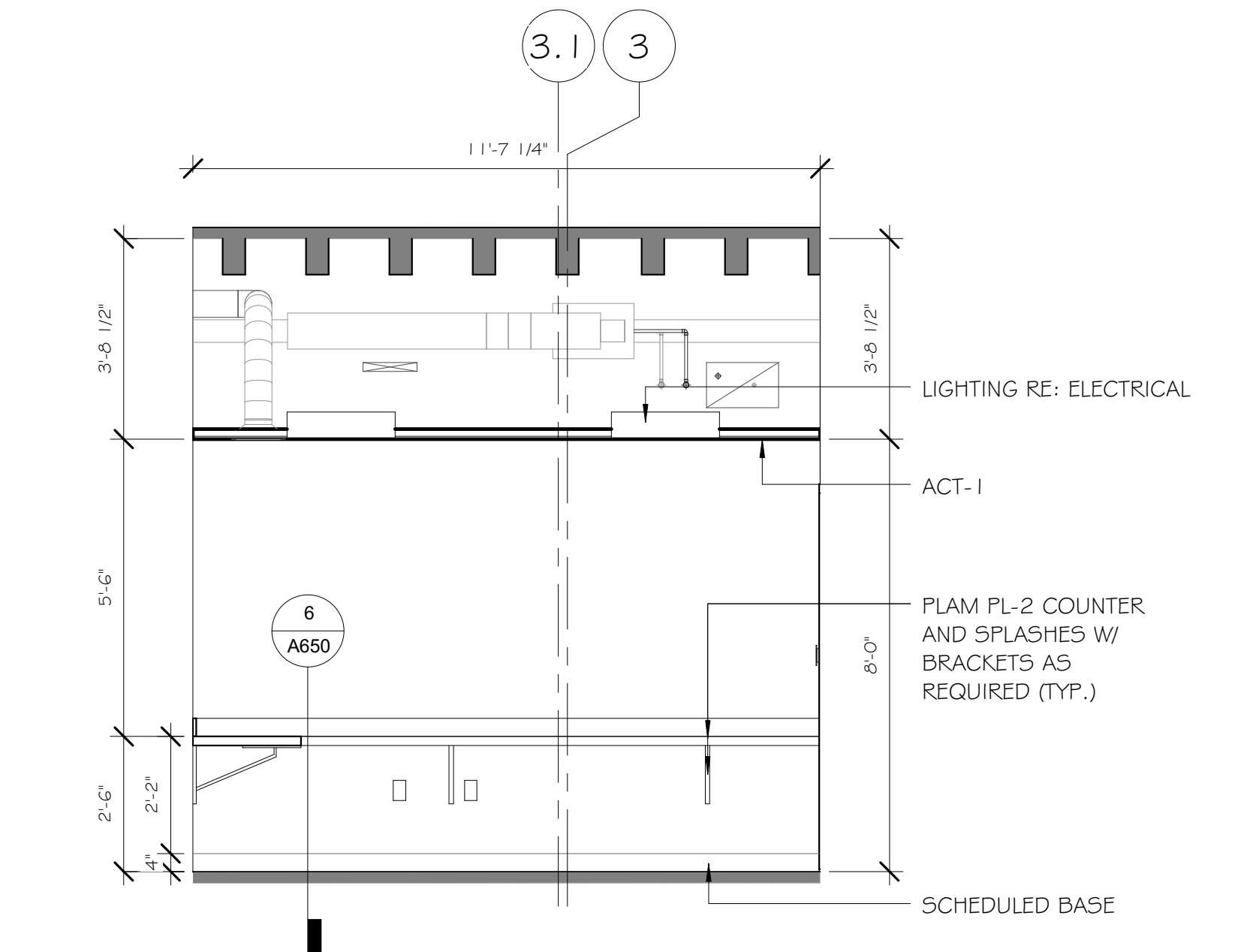
2 AV ROOM - WEST INTERIOR ELEVATION  
A603 3/8" = 1'-0"



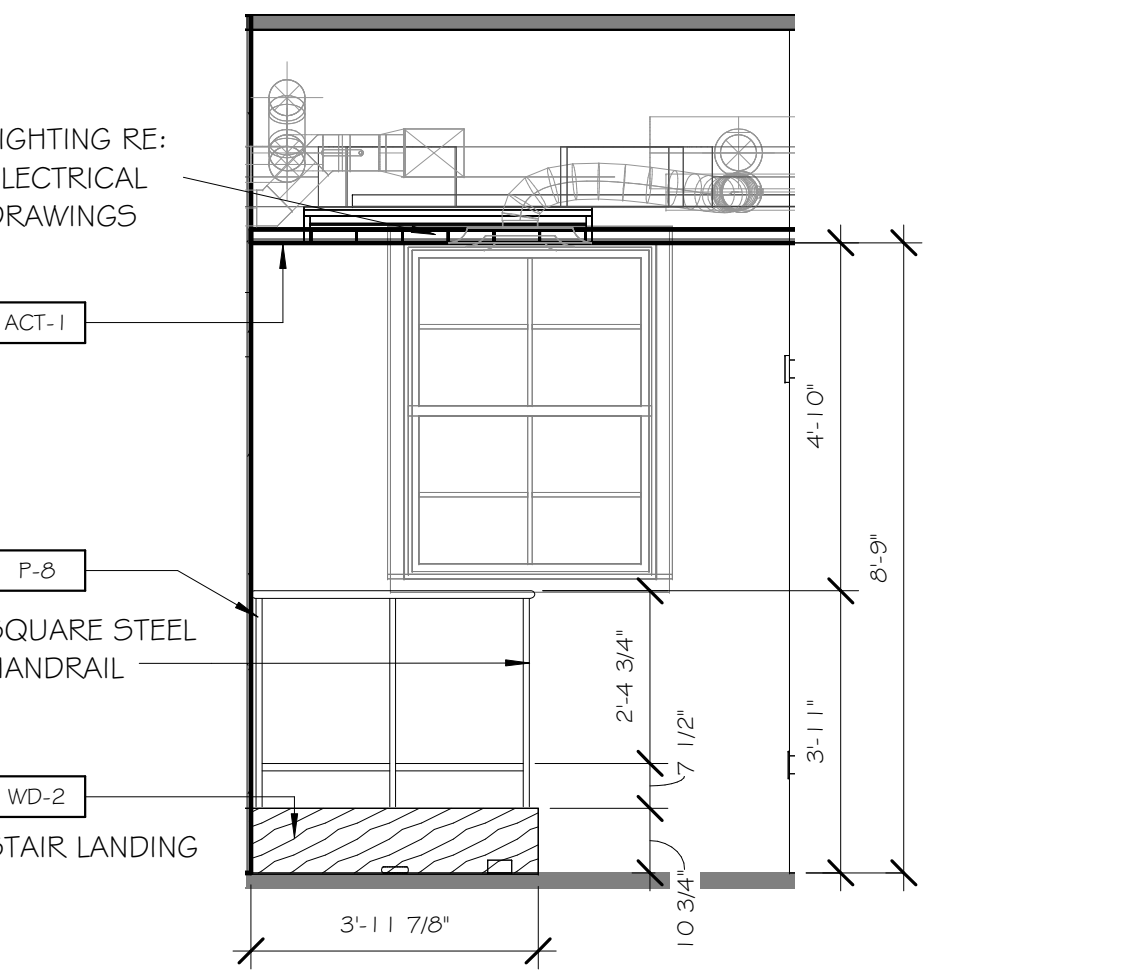
3 PULM. WORK RM. NORTH INTERIOR ELE.  
A603 3/8" = 1'-0"



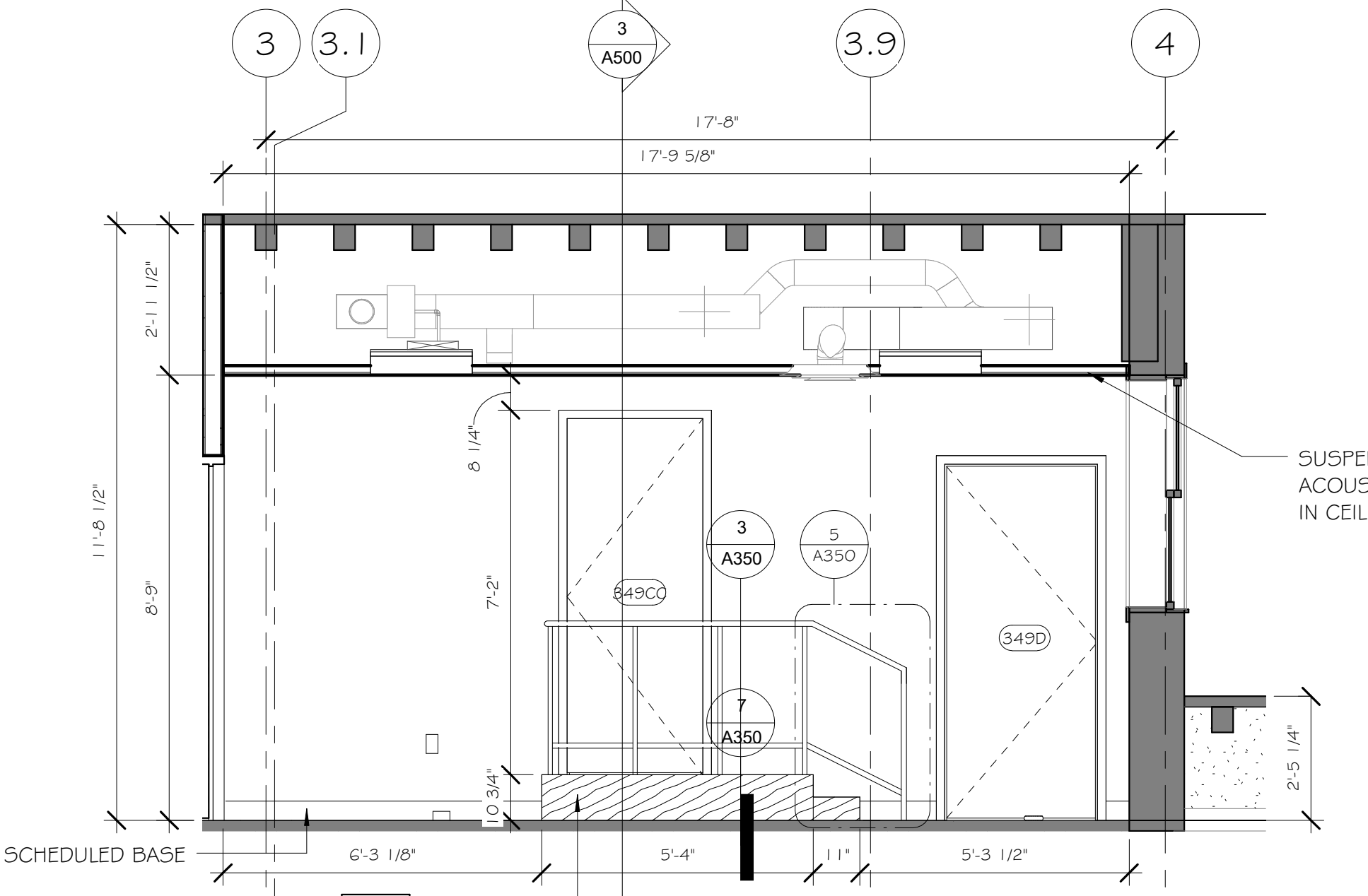
4 PULM. WORK RM. EAST INTERIOR ELE.  
A603 3/8" = 1'-0"



5 PULM. WORK RM. WEST INTERIOR ELE.  
A603 3/8" = 1'-0"



6 OPEN OFFICE - NORTH INTERIOR ELEVATION  
A603 3/8" = 1'-0"



7 OPEN OFFICE - WEST INTERIOR ELEVATION  
A603 3/8" = 1'-0"

three inches = one foot  
one and one half inches = one foot  
one inch = one foot  
three quarters inch = one foot  
one half inch = one foot  
three eighths inch = one foot  
one quarter inch = one foot  
one eighth inch = one foot

3/13/2017 3:52:07 PM C:\Users\cnewcomb\Documents\Revit\_2016\2016.052\_VA Show Falls Chapel\_01newcomb.rvt

**ENGINEERS/CONSULTANTS:**

WOOLPERT, INC.  
343 FOUNTAINS PARKWAY  
SUITE 100  
FAIRVIEW HEIGHTS, IL 62208  
314-436-0865  
314-436-0884 fax

SCI ENGINEERING, INC  
130 POINT WEST BLVD.  
ST. CHARLES, MO 63301  
636-949-8200  
636-949-8269 fax

FINAL SUBMITTAL  
FOR CONSTRUCTION

3/13/17

**ARCHITECT:**

*Chiodini*  
ARCHITECTS

Architecture / Interior Design / Graphics  
1401 S. Brentwood Blvd. / Suite 575 / St. Louis, Missouri 63144  
314-725-5088 / arch@chiodini.com

THE ARCHITECT EXPRESSLY RESERVES HIS COPYRIGHT AND STATUTORY AND COMMON LAW AND OTHER PROPERTY RIGHTS FOR THESE ARCHITECTURAL WORKS AND TECHNICAL DOCUMENTS AND ANY DERIVATIVES THEREOF. THESE DRAWINGS AND DOCUMENTS ARE NOT TO BE REPRODUCED, CHANGED OR COPIED IN ANY MANNER WITHOUT THE EXPRESS WRITTEN CONSENT OF LOUIS & CLARENDON ARCHITECTS, NOR ARE THEY TO BE ASSIGNED TO ANY PARTY WITHOUT FIRST OBTAINING OUR WRITTEN PERMISSION AND CONSENT.

© COPYRIGHT PENDING

Drawing Title  
**INTERIOR ELEVATIONS**

Approved: Project Director  
Approver

Project Title  
**VA HEALTH CARE SYSTEM**

Location  
VAS 438-16-104 BLDG. 5 CHAPEL  
SIOUX FALLS, SD 57105

Date  
2017.03.13

Checked  
RLK

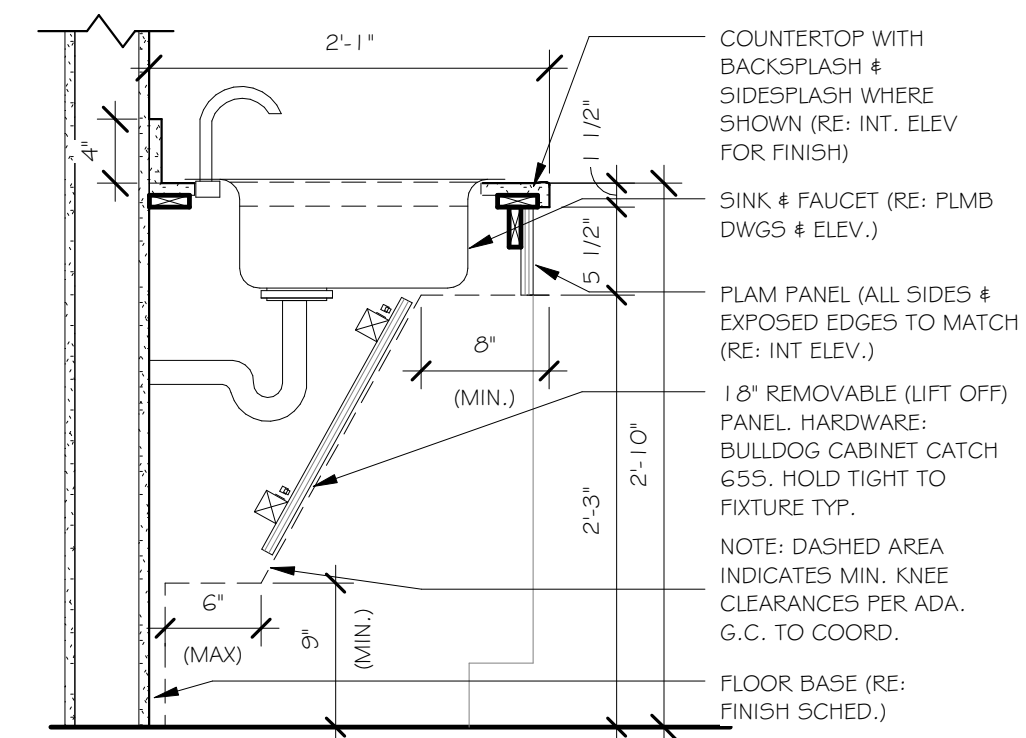
Drawn  
C.J.N

Project Number  
438-16-104 2016.052

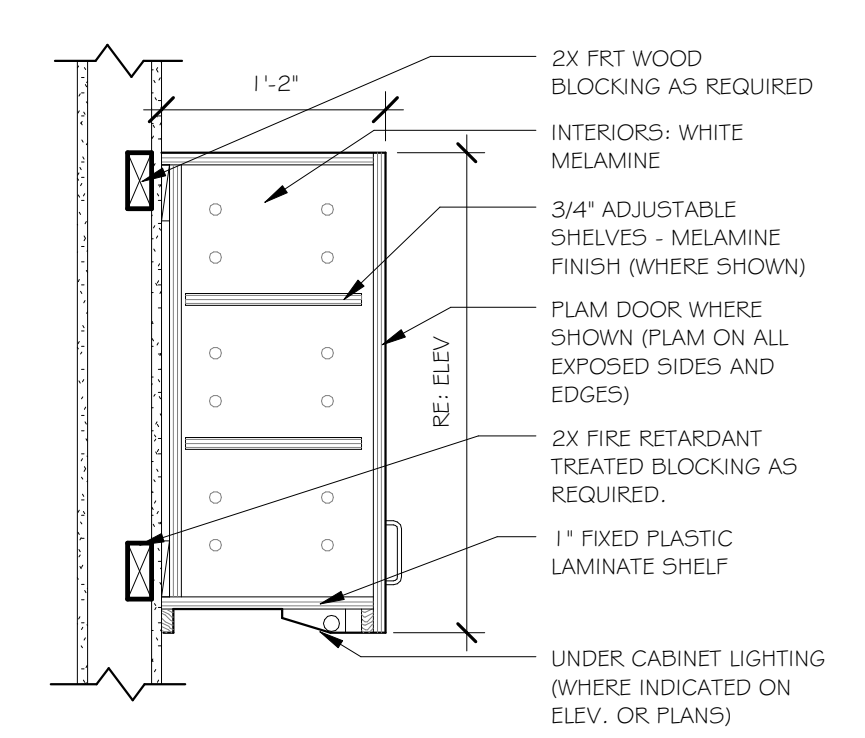
Building Number  
5

Drawing Number  
**A603**

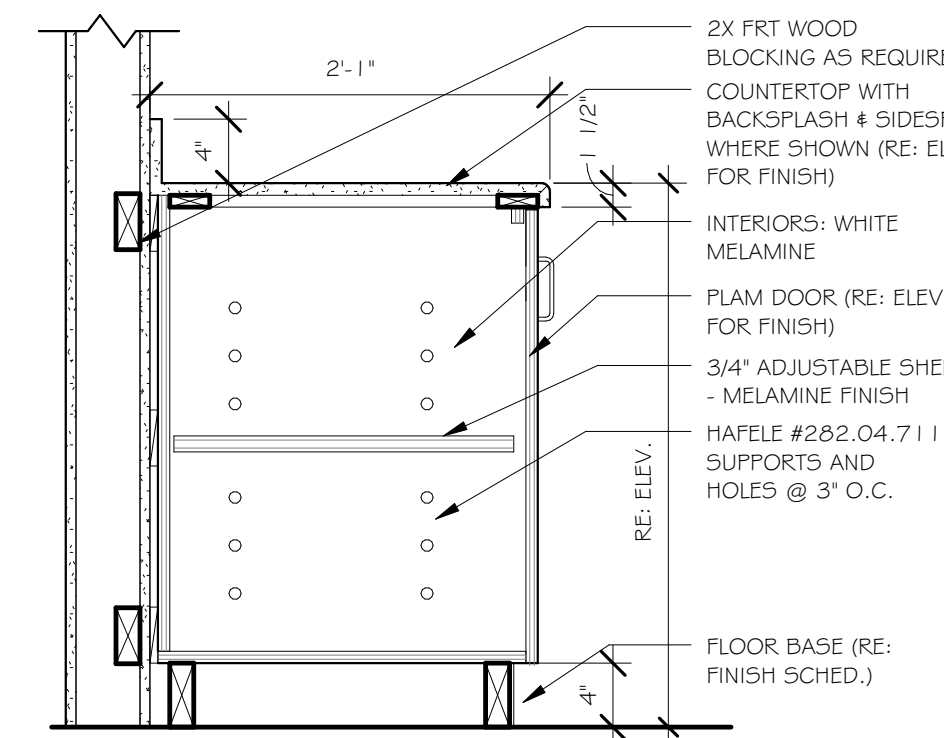
Owner  
**Department of Veterans Affairs**



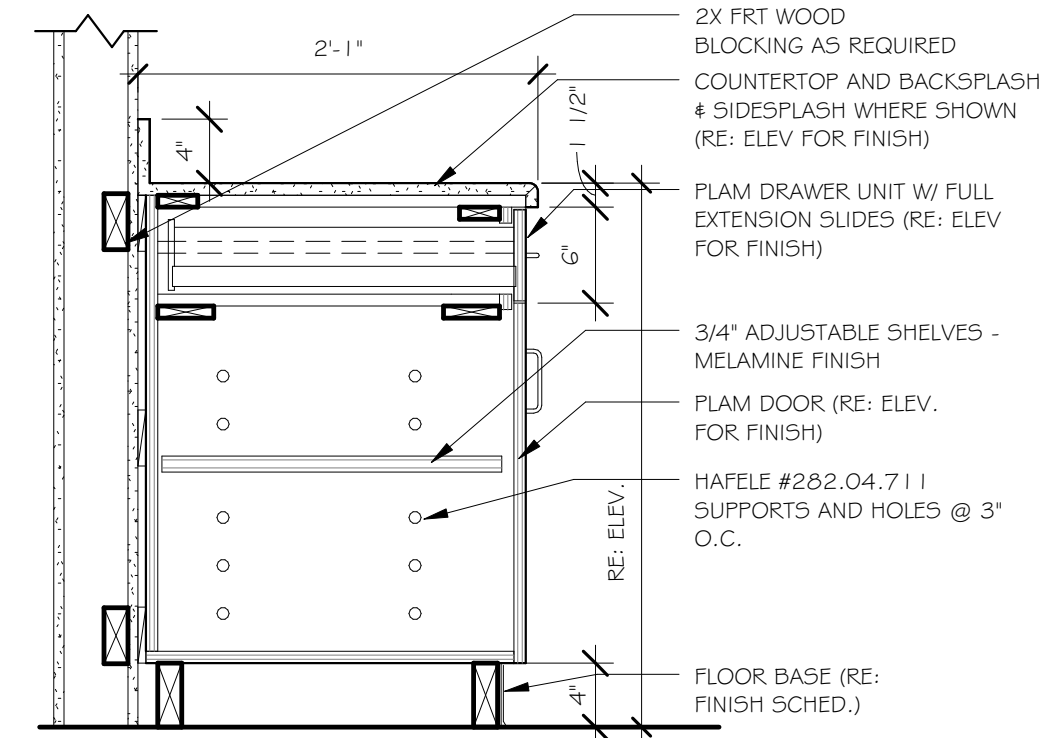
1 BASE CABINET - ADA SINK  
A650 / 1" = 1'-0"



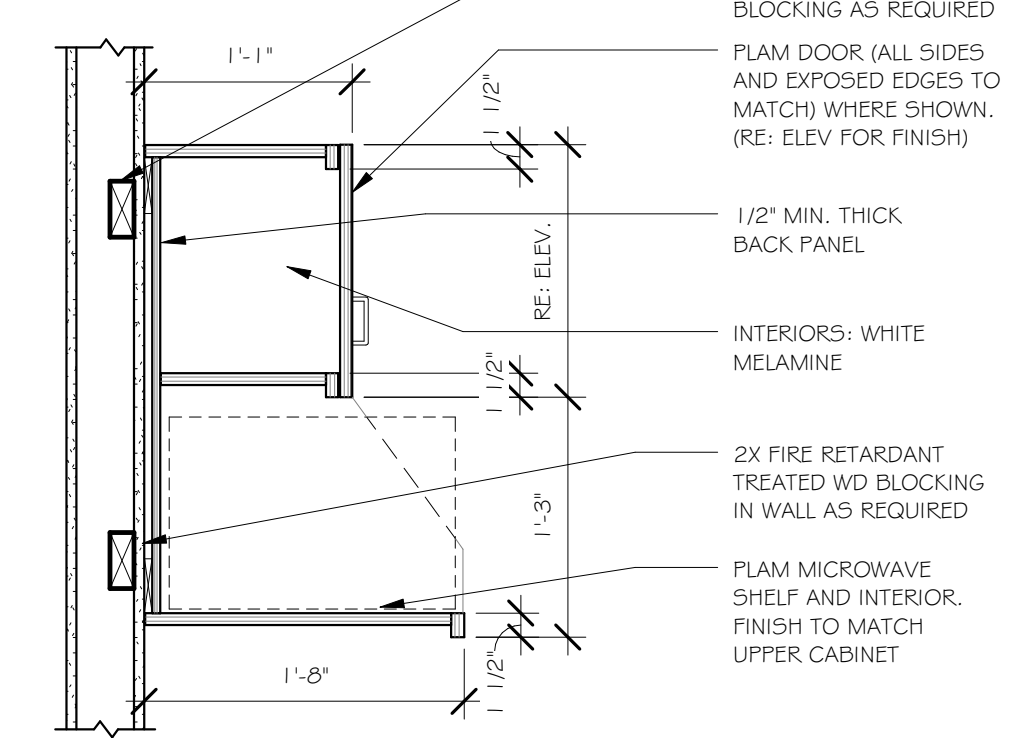
2 WALL CABINET SECTION  
A650 / 1" = 1'-0"



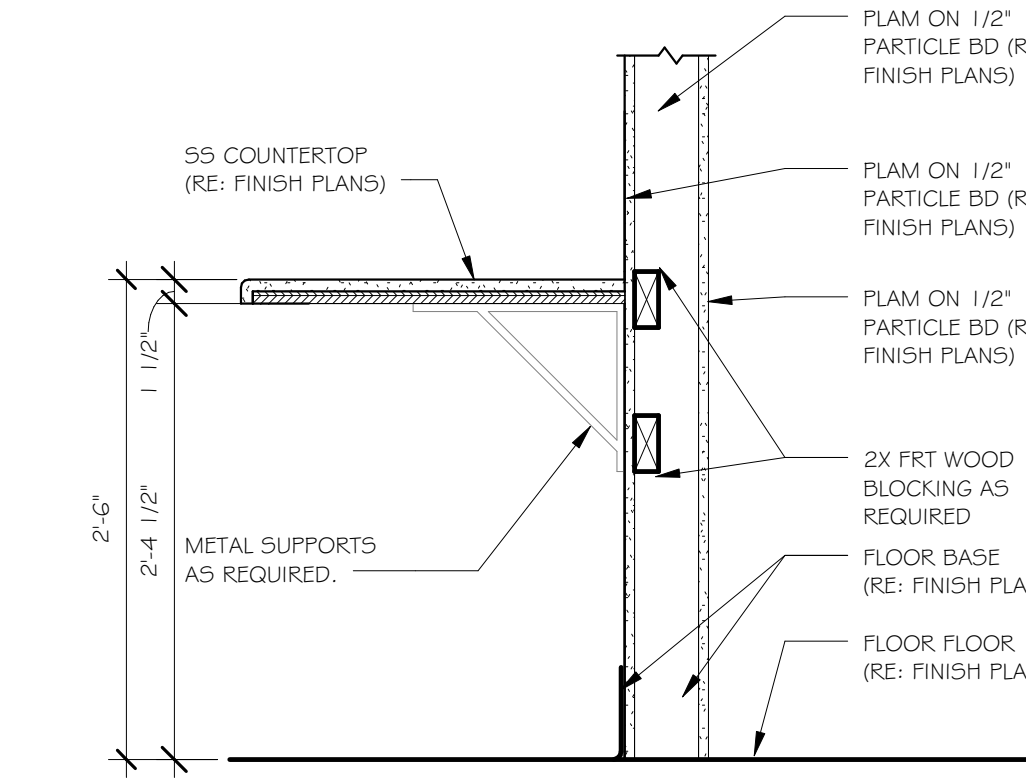
3 BASE CABINET WITH DOOR  
A650 / 1" = 1'-0"



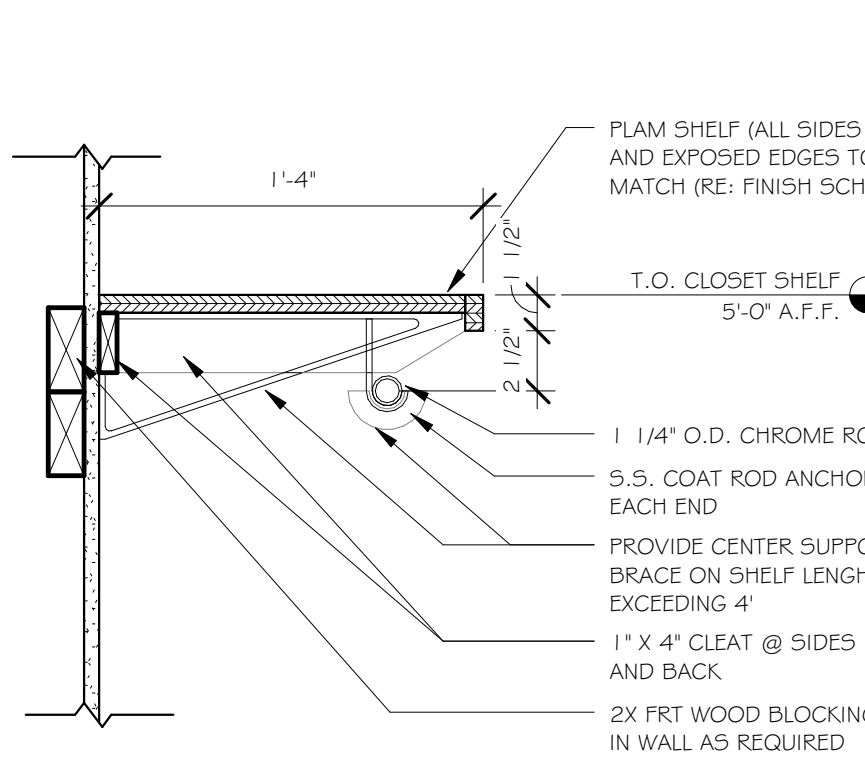
4 BASE CABINET WITH DRAWER  
A650 / 1" = 1'-0"



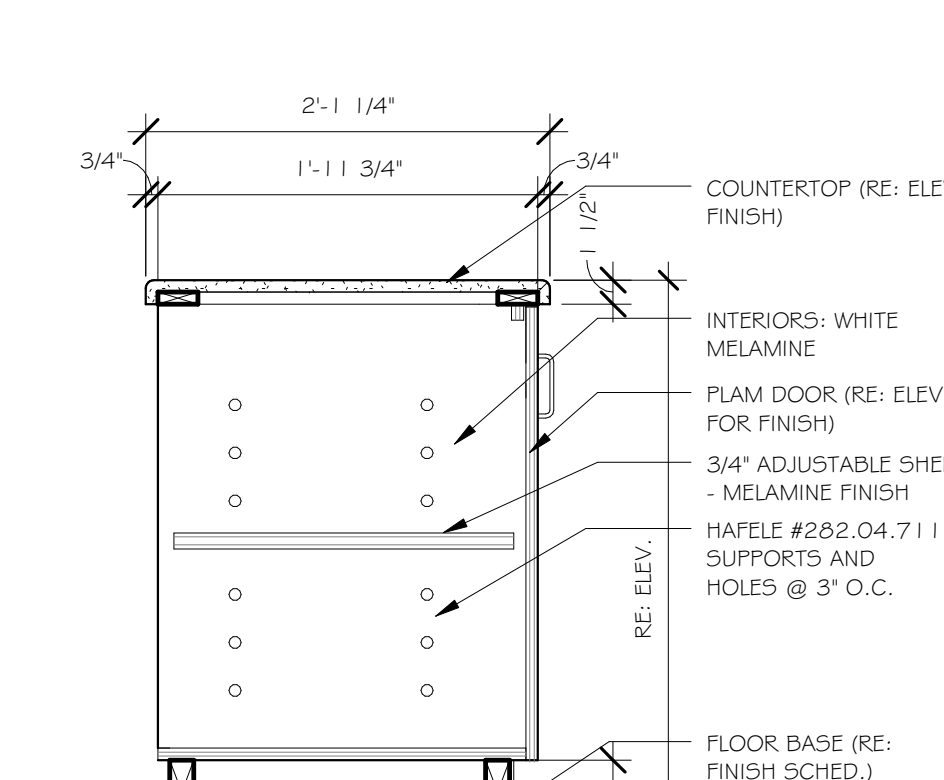
5 UPPER WALL CABINET - MICROWAVE  
A650 / 1" = 1'-0"



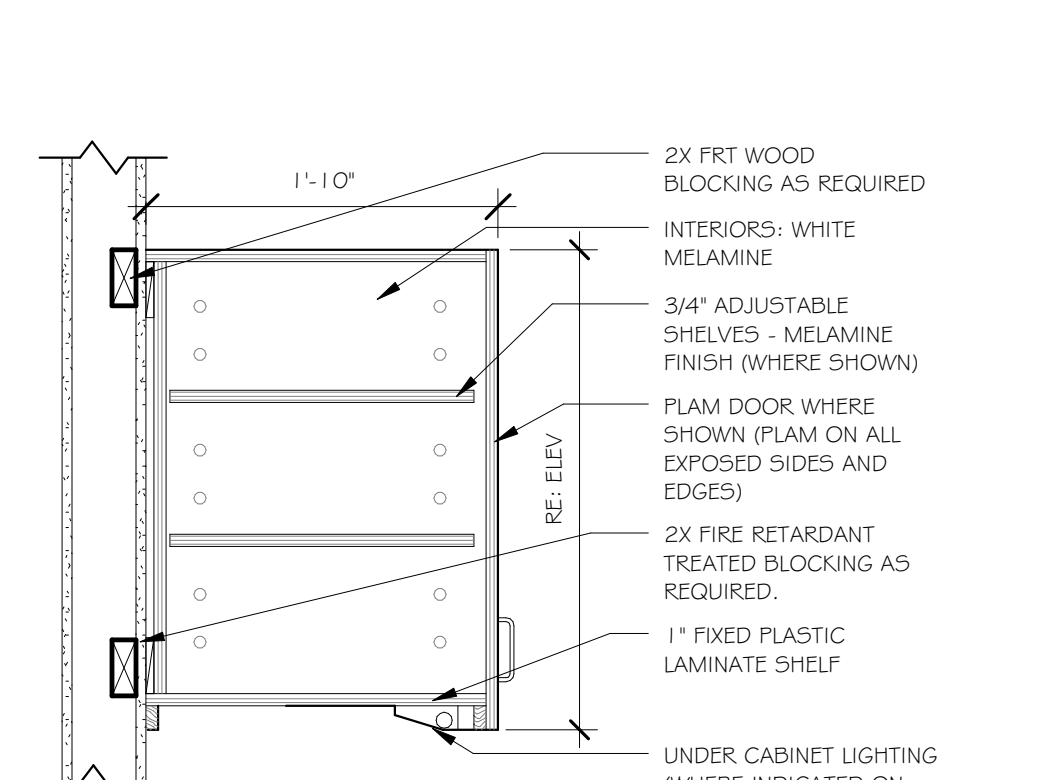
6 WORK COUNTER  
A650 / 1" = 1'-0"



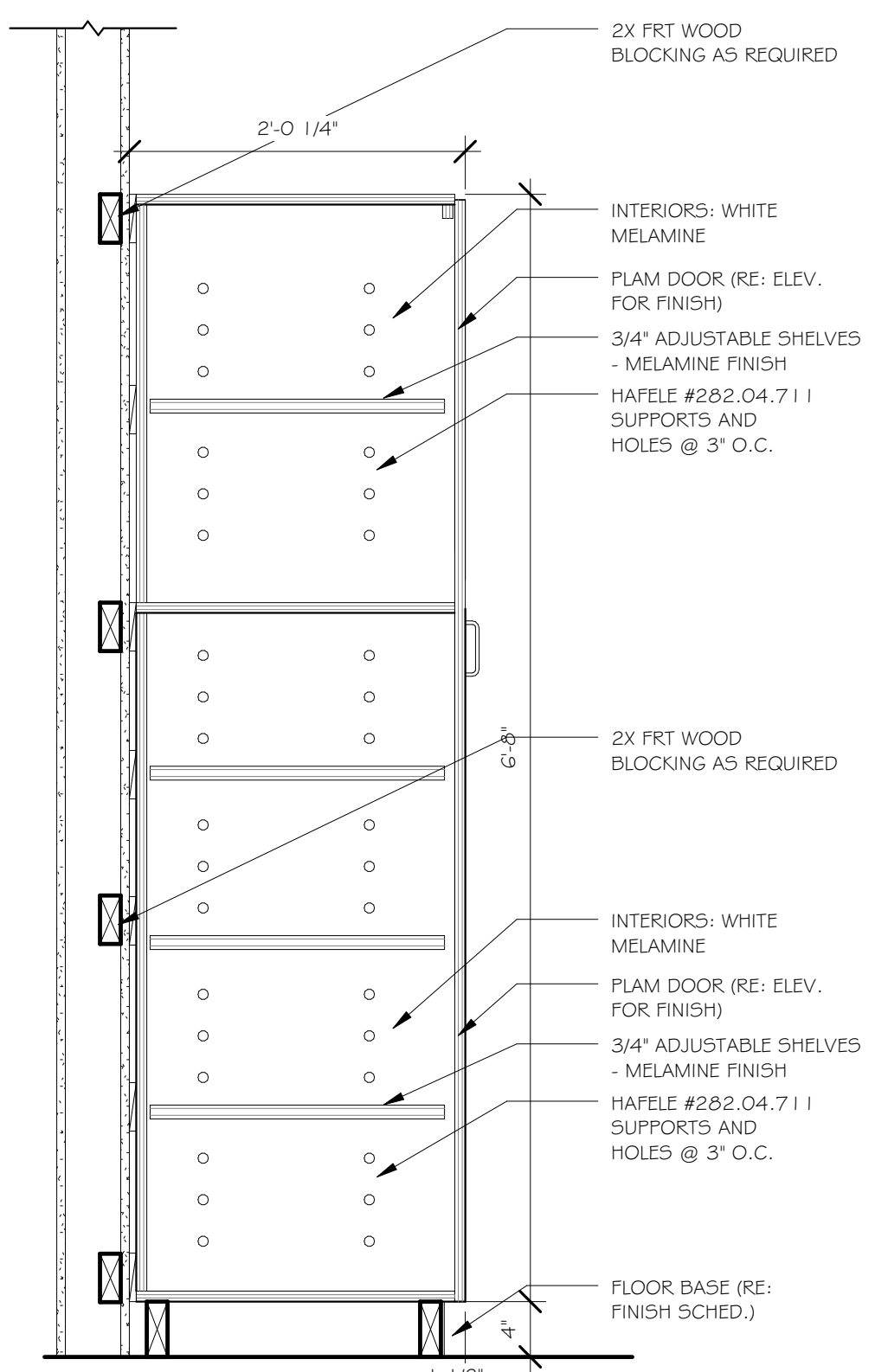
7 CLOSET - SHELF AND ROD - SECTION  
A650 / 1 1/2" = 1'-0"



8 BASE CABINET WITH DOOR @ OPEN OFFICE  
A650 / 1" = 1'-0"



9 WALL CABINET SECTION BRONCHOSCOPE  
A650 / 1" = 1'-0"



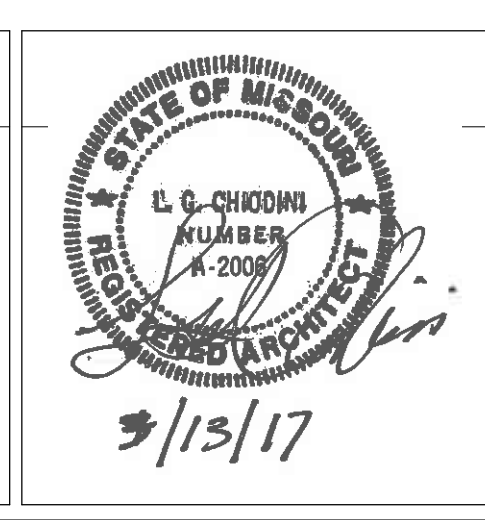
10 TALL CABINET WITH DOOR  
A650 / 1" = 1'-0"

GENERAL NOTES: CASEWORK  
ALL CABINETS TO BE LOCKABLE.  
ALL CABINETS TO RECEIVE KEYING CUT ON ONE SIDE ONLY.

**ENGINEERS/CONSULTANTS:**  
WOOLPERT, INC.  
343 FOUNTAINS PARKWAY  
SUITE 100  
FAIRVIEW HEIGHTS, IL 62208  
314-436-0865  
314-436-0884 fax

SCI ENGINEERING, INC  
130 POINT WEST BLVD.  
ST. CHARLES, MO 63301  
636-949-8200  
636-949-8269 fax

FINAL SUBMITTAL  
FOR CONSTRUCTION



**ARCHITECT:**  
*Chiodini*  
ARCHITECTS  
Architecture / Interior Design / Graphics  
1401 S. Brentwood Blvd. / Suite 575 / St. Louis, Missouri 63144  
314-725-5088 / arch@chiodini.com

THE ARCHITECT EXPRESSLY RESERVES HIS/HER/CORPORATE AND STATUTORY LAW COPYRIGHTS AND OTHER PROPERTY RIGHTS FOR THESE ARCHITECTURAL DRAWINGS AND DOCUMENTS AND ANY DERIVATIVES THEREOF. THESE DRAWINGS AND DOCUMENTS ARE NOT TO BE REPRODUCED, CHANGED OR COPIED IN ANY MANNER WITHOUT THE EXPRESS WRITTEN CONSENT OF LUIS & CHIODINI ARCHITECTS, NOR ARE THEY TO BE ASSIGNED TO ANY PARTY WITHOUT FIRST OBTAINING THE WRITTEN PERMISSION AND CONSENT.  
© COPYRIGHT PENDING

Drawing Title  
**MILLWORK DETAILS**

Approved: Project Director  
Approver

Project Title  
VA HEALTH CARE SYSTEM

Project Number  
438-16-104 2016.052

Building Number  
5

Drawing Number  
**A650**

Location  
VAS 438-16-104 BLDG. 5 CHAPEL  
SIOUX FALLS, SD 57105

Date  
2017.03.13

Checked  
RLK

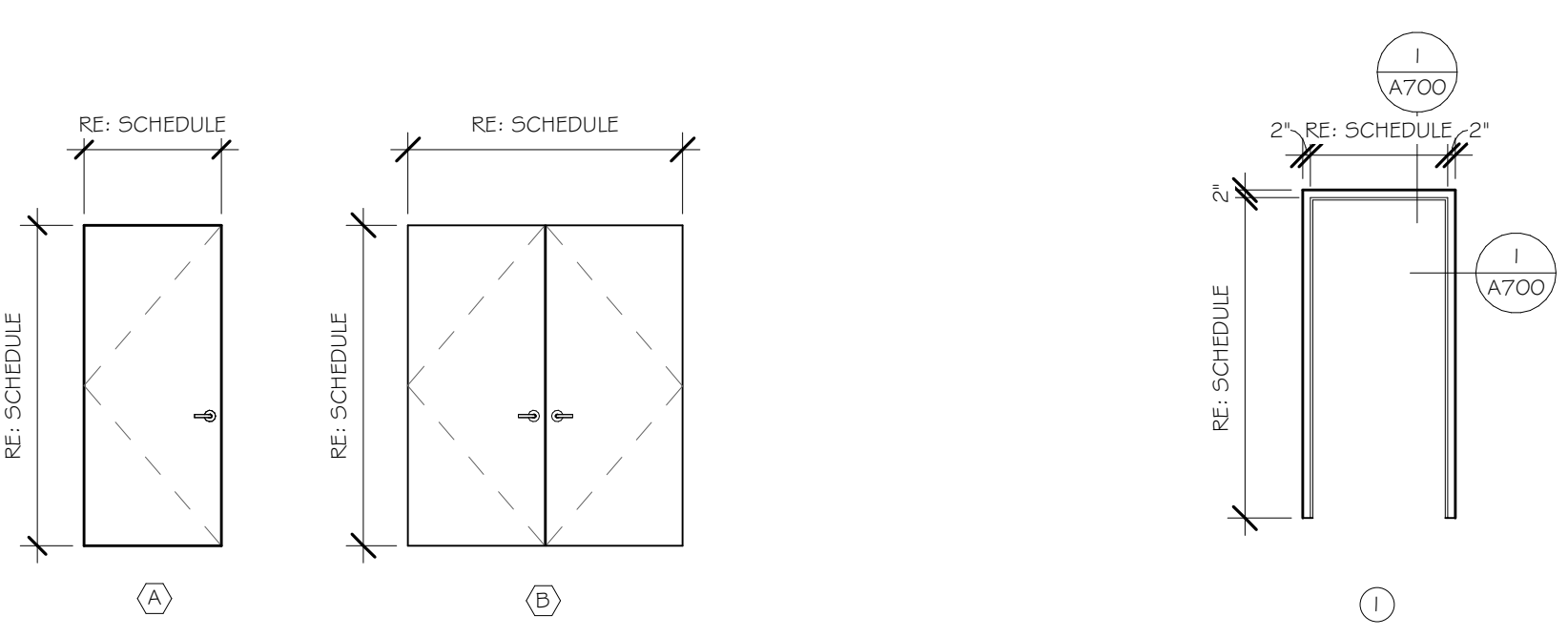
Drawn  
C.J.N.

Scale: As indicated

Owner  
Department of Veterans Affairs

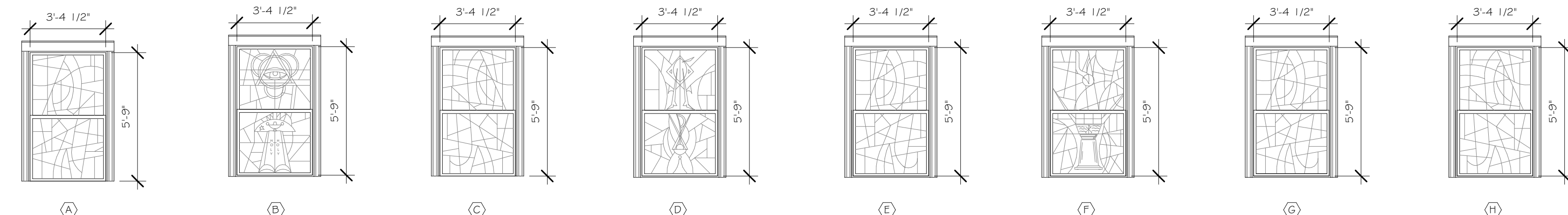
three inches = one foot  
one and one half inches = one foot  
one inch = one foot  
three quarters inch = one foot  
one quarter inch = one foot  
three eighths inch = one foot  
one eighth inch = one foot  
one sixteenth inch = one foot

3/13/2017 3:52:08 PM  
C:\Users\cnewcombe\Documents\Revit\_2016\2016.052\_VA Sioux Falls Chapel\_millwork.rvt



**DOOR TYPES**  
1/4" = 1'-0"

**DOOR FRAMES**  
1/4" = 1'-0"

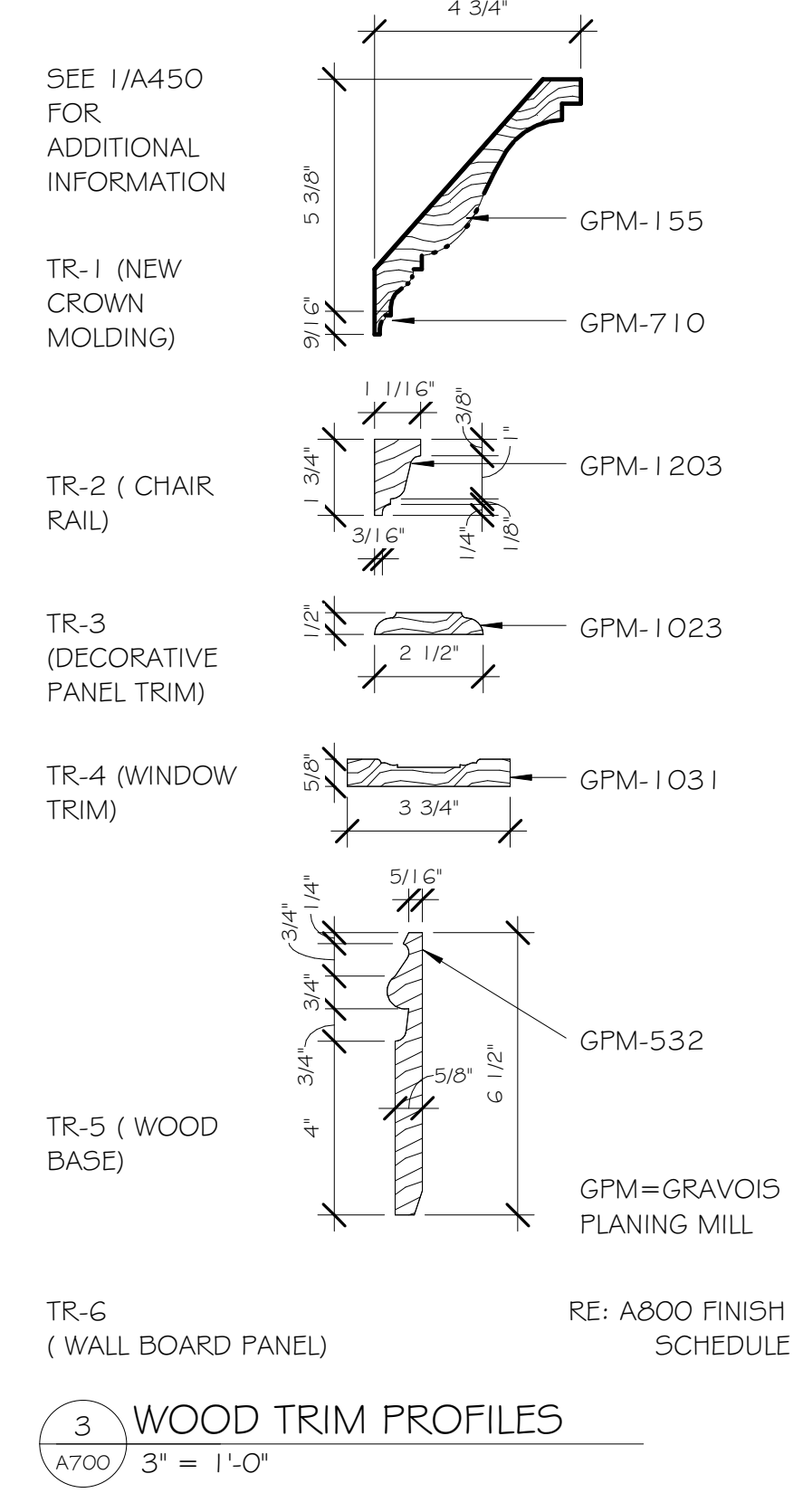


**WINDOW TYPES**  
1/4" = 1'-0"

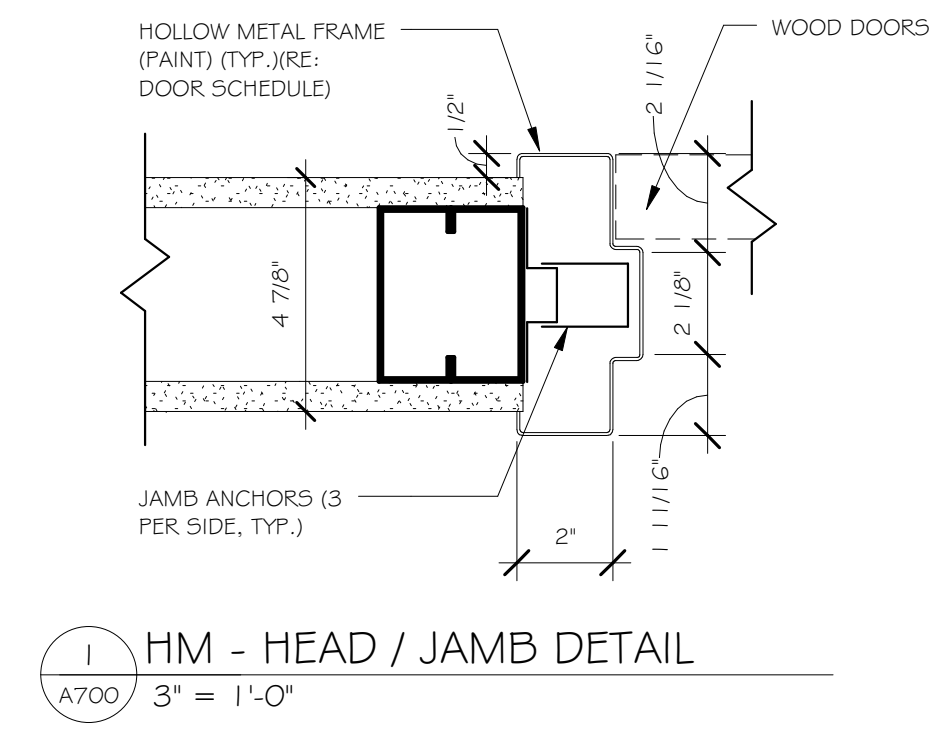
FOR RELOCATION OF STAIN GLASS WINDOWS RE: A120

Door Number	Door						Frame					Comments
	Type	Material	Finish	Width	Height	Thickness	Type	Material	Finish	Jamb	Head	
348B	A	WD	WD-1	3'-0"	7'-0"	0'-1 3/4"	HM	P-2	1/A700	1/A700	HW-2	
348C	A	WD	WD-1	3'-0"	7'-0"	0'-1 3/4"	HM	P-2	1/A700	1/A700	HW-2	
349	B	WD	WD-1	6'-0"	7'-0"	0'-1 3/4"	HM	P-2	1/A700	1/A700	HW-4	1-HR RATED DOOR 4 1-HR RATED WALL
349A	A	WD	WD-1	3'-0"	7'-0"	0'-1 3/4"	HM	P-2	2/A700	1/A700	HW-2	
349B	A	WD	WD-1	3'-0"	7'-0"	0'-1 3/4"	HM	P-2	2/A700	1/A700	HW-1	STC 40
349C	A	WD	WD-1	3'-0"	7'-0"	0'-1 3/4"	HM	P-2	2/A700	1/A700	HW-1	45-MIN RATED DOOR 4 1-HR RATED WALL
349CC	A	WD	WD-1	2'-6"	7'-0"	0'-1 3/4"	HM	P-2	2/A700	1/A700	HW-1	45-MIN RATED DOOR 4 1-HR RATED WALL
349D	A	WD	WD-1	3'-0"	7'-0"	0'-1 3/4"	HM	P-2	1/A700	1/A700	HW-2	45-MIN RATED DOOR 4 1-HR RATED WALL
349E	A	WD	WD-1	3'-0"	7'-0"	0'-1 3/4"	HM	P-2	1/A700	1/A700	HW-1	
349F	A	WD	WD-1	3'-0"	7'-0"	0'-1 3/4"	HM	P-2	1/A700	1/A700	HW-1	
349G	A	WD	WD-1	3'-0"	7'-0"	0'-1 3/4"	HM	P-2	1/A700	1/A700	HW-1	
349H	A	WD	WD-1	3'-0"	7'-0"	0'-1 3/4"	HM	P-2	1/A700	1/A700	HW-1	
350	A	WD	WD-1	3'-6"	7'-0"	0'-1 3/4"	HM	P-2	1/A700	1/A700	HW-2	
351	A	WD	WD-1	3'-0"	7'-0"	0'-1 3/4"	HM	P-2	1/A700	1/A700	HW-1	
351A	A	WD	WD-1	3'-0"	7'-0"	0'-1 3/4"	HM	P-2	1/A700	1/A700	HW-3	
351B	A	WD	WD-1	3'-0"	7'-0"	0'-1 3/4"	HM	P-2	1/A700	1/A700	HW-1	
351C	A	WD	WD-1	3'-0"	7'-0"	0'-1 3/4"	HM	P-2	1/A700	1/A700	HW-1	
351D	A	WD	WD-1	3'-0"	7'-0"	0'-1 3/4"	HM	P-2	1/A700	1/A700	HW-3	
351E	A	WD	WD-1	3'-0"	7'-0"	0'-1 3/4"	HM	P-2	1/A700	1/A700	HW-1	
351F	A	WD	WD-1	3'-0"	7'-0"	0'-1 3/4"	HM	P-2	1/A700	1/A700	HW-1	
351G	A	WD	WD-1	3'-0"	7'-0"	0'-1 3/4"	HM	P-2	1/A700	1/A700	HW-1	
351H	A	WD	WD-1	3'-0"	7'-0"	0'-1 3/4"	HM	P-2	1/A700	1/A700	HW-1	
351J	C	HM	P-6	2'-11 1/2"	4'-9 3/4"	0'-1 3/4"	HM	P-2	1/A700	1/A700	HW-5	45-MIN RATED DOOR
397	A	WD	WD-1	3'-0"	7'-0"	0'-1 3/4"	HM	P-2	1/A700	1/A700	HW-1	

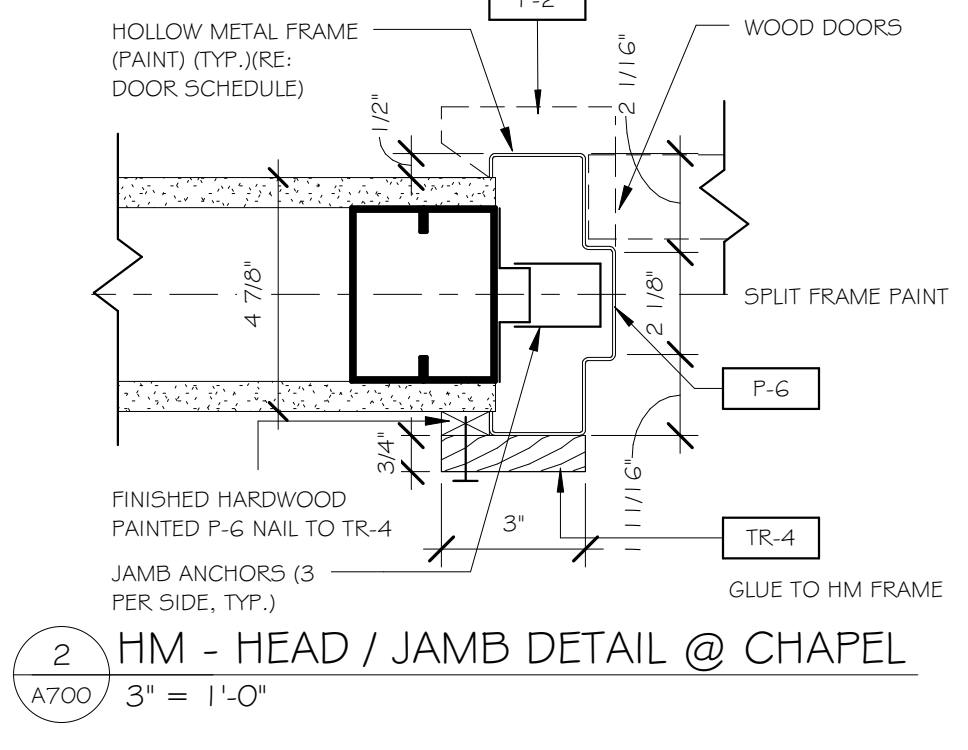
\*NOTE: SEE FINISH/MATERIAL LEGEND AND SPECIFICATIONS FOR ADDITIONAL INFORMATION ON FINISH.



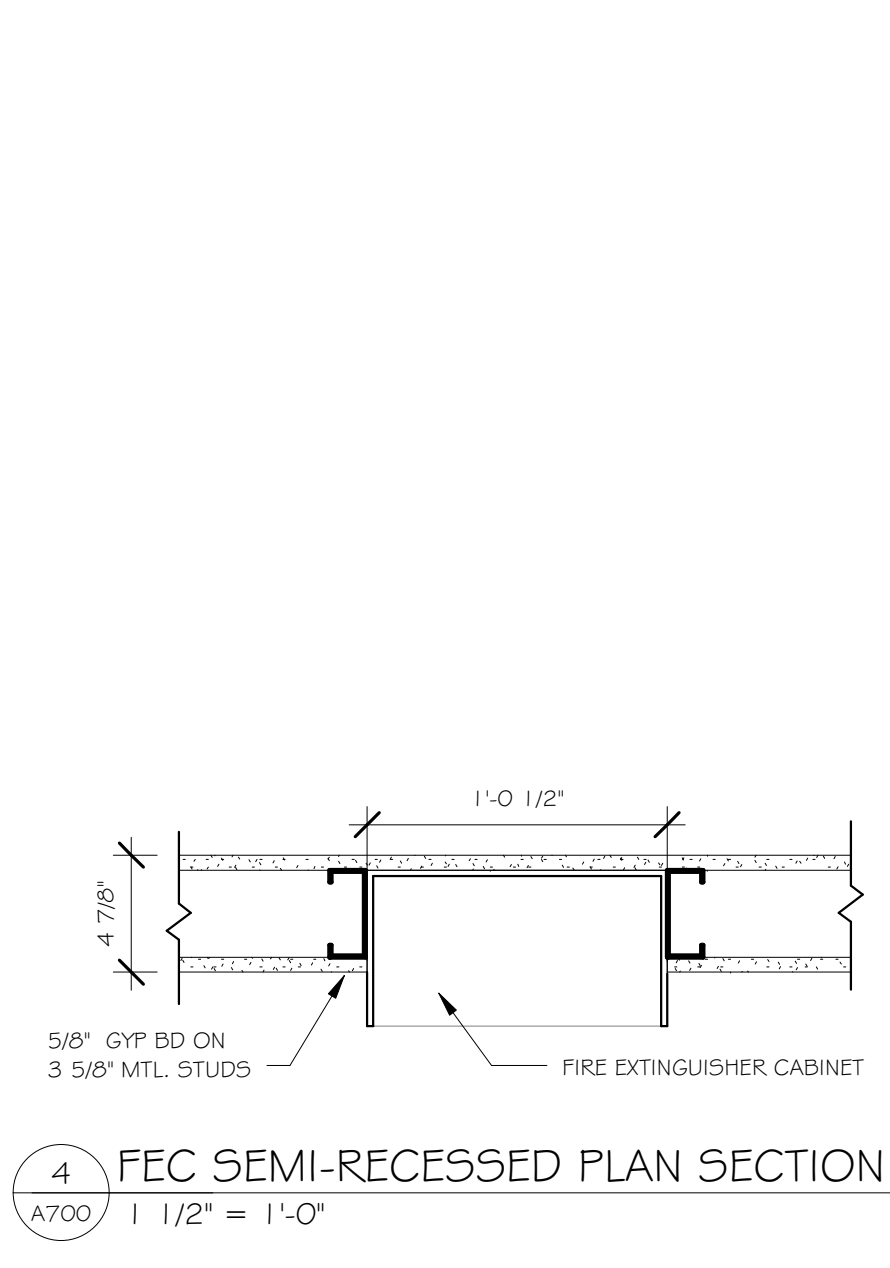
**WOOD TRIM PROFILES**  
1/4" = 1'-0"



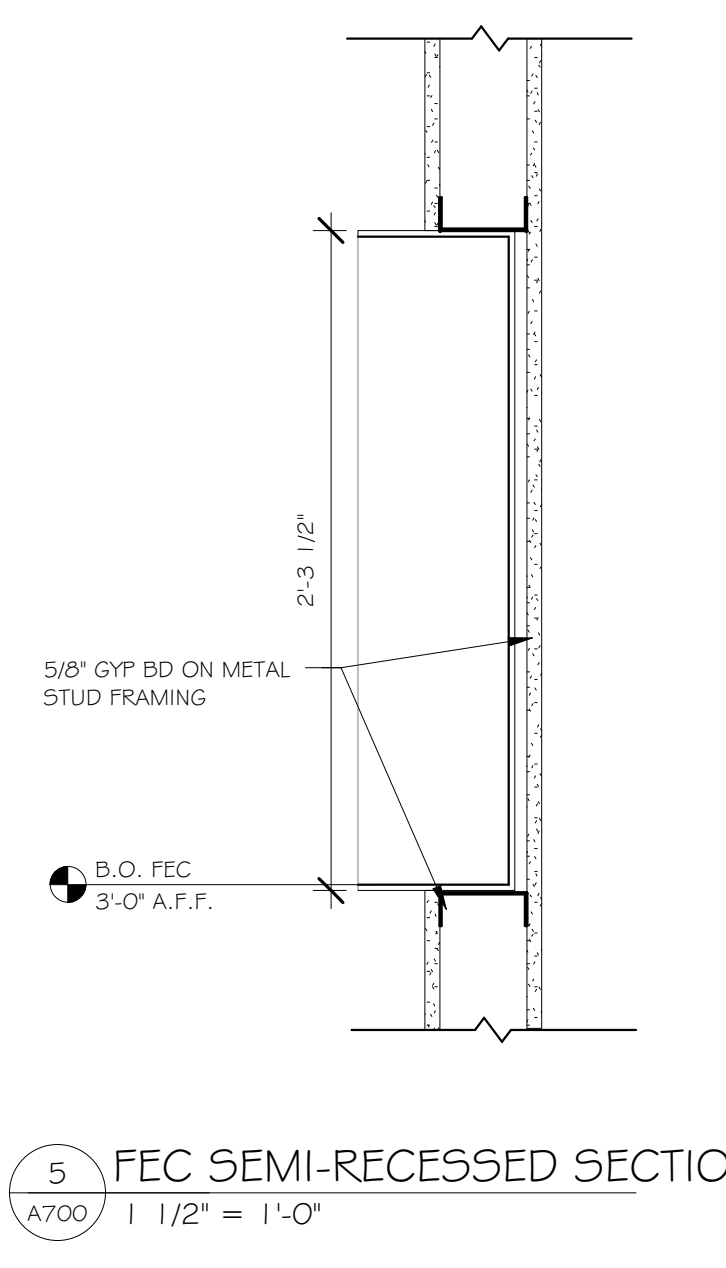
**1 HM - HEAD / JAMB DETAIL**  
A700 3" = 1'-0"



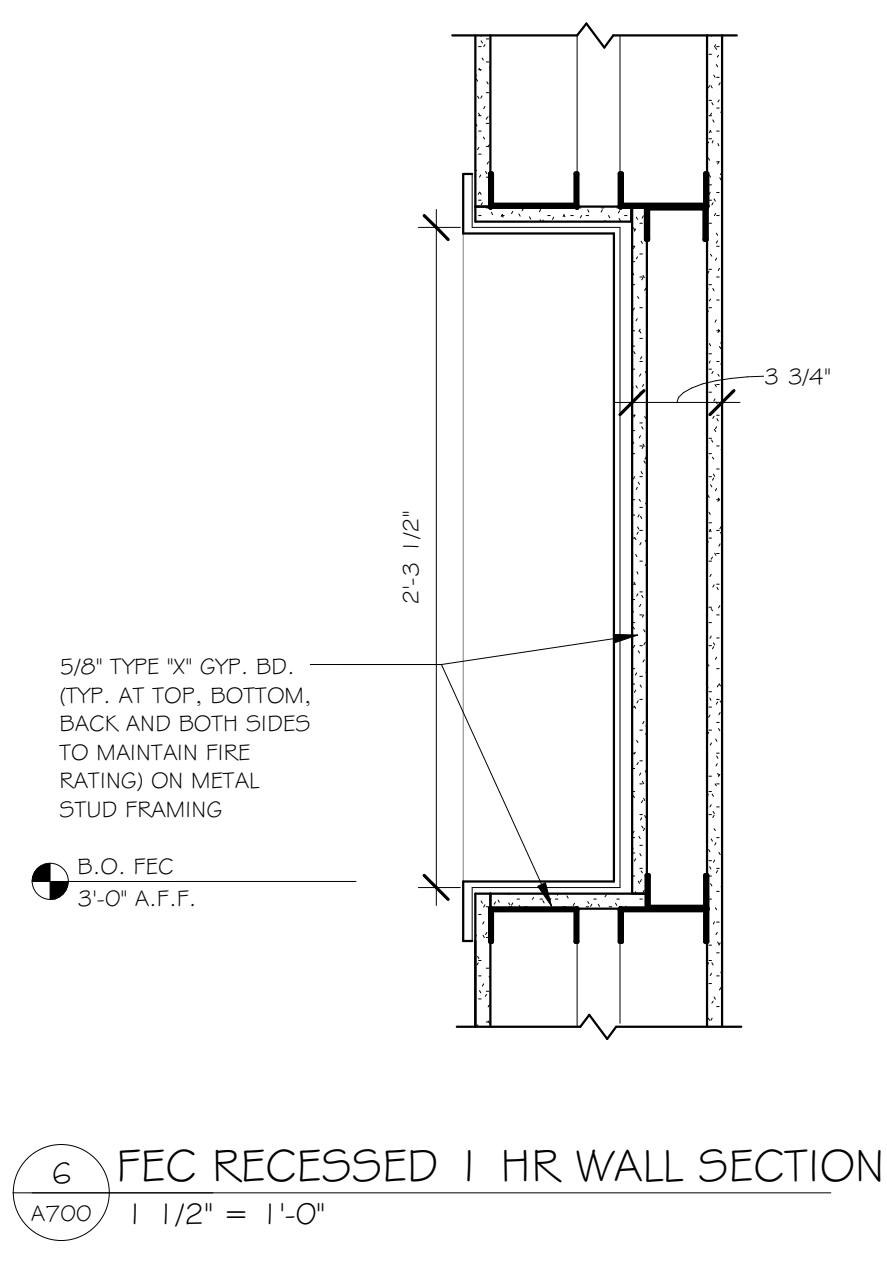
**2 HM - HEAD / JAMB DETAIL @ CHAPEL**  
A700 3" = 1'-0"



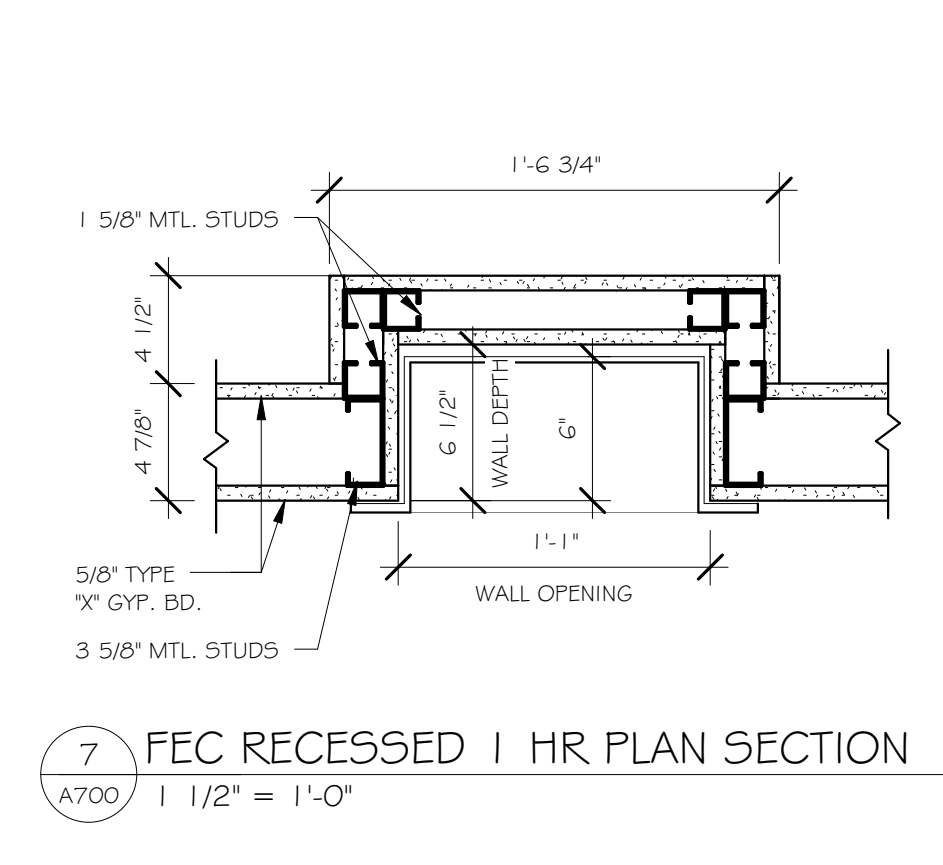
**4 FEC SEMI-RECESSED PLAN SECTION**  
A700 1 1/2" = 1'-0"



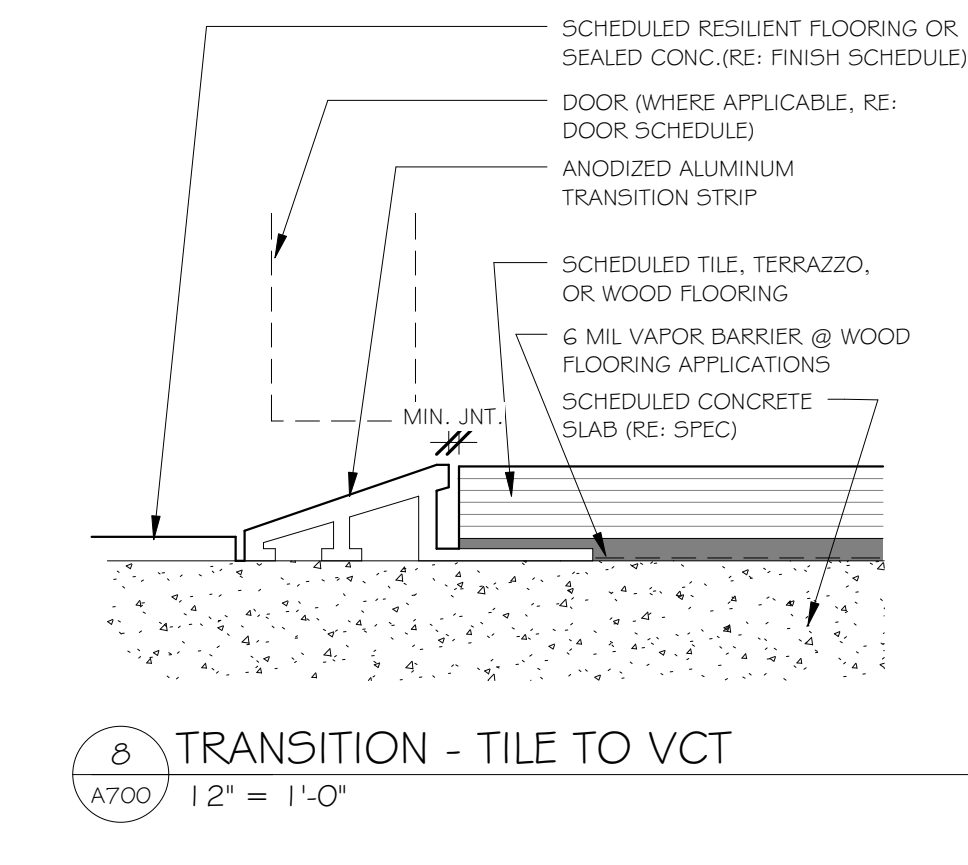
**5 FEC SEMI-RECESSED SECTION**  
A700 1 1/2" = 1'-0"



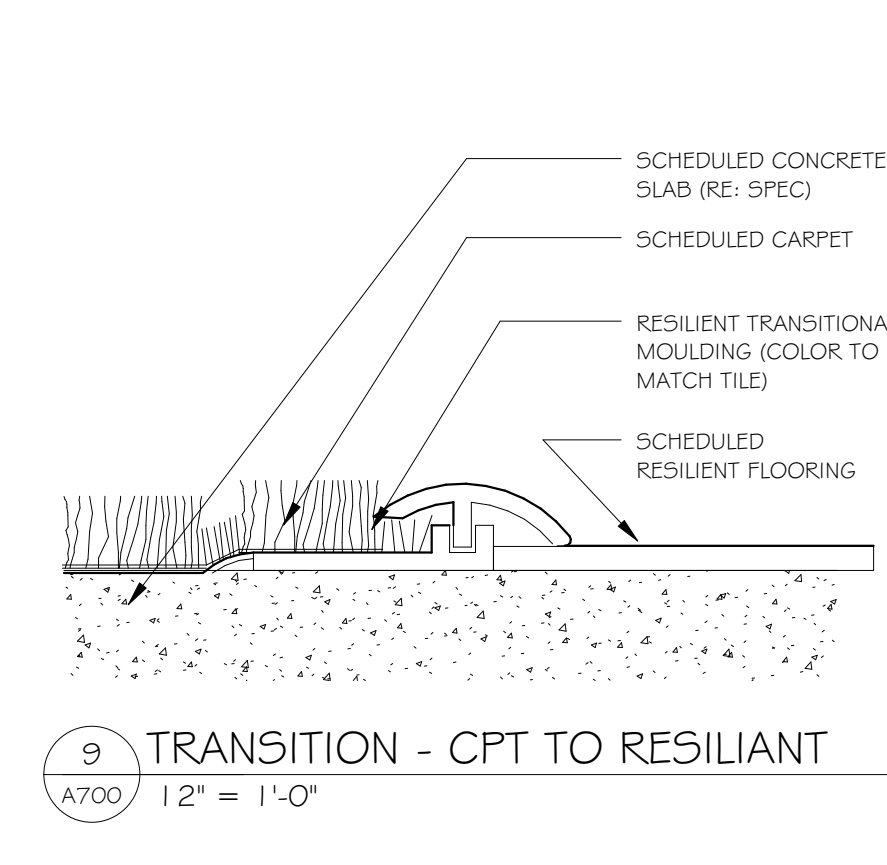
**6 FEC RECESSED 1 HR WALL SECTION**  
A700 1 1/2" = 1'-0"



**7 FEC RECESSED 1 HR PLAN SECTION**  
A700 1 1/2" = 1'-0"



**8 TRANSITION - TILE TO VCT**  
A700 1/2" = 1'-0"



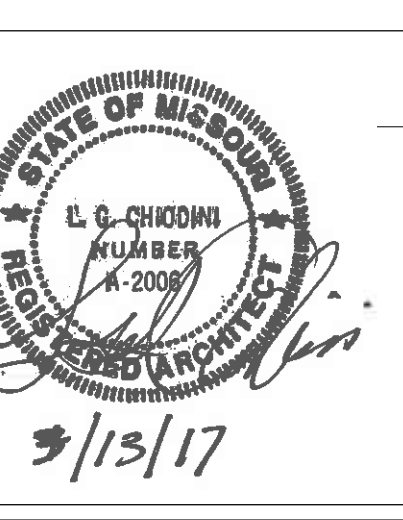
**9 TRANSITION - CPT TO RESILIENT**  
A700 1/2" = 1'-0"

**ENGINEERS/CONSULTANTS:**

WOOLPERT, INC.  
343 FOUNTAINS PARKWAY  
SUITE 100  
FAIRVIEW HEIGHTS, IL 62208  
314-436-0865  
314-436-0884 fax

SCI ENGINEERING, INC  
130 POINT WEST BLVD.  
ST. CHARLES, MO 63301  
636-949-8200  
636-949-8269 fax

FINAL SUBMITTAL FOR CONSTRUCTION



**ARCHITECT:**

**Chiodini ARCHITECTS**  
Architecture / Interior Design / Graphics  
1401 S. Brentwood Blvd. / Suite 575 / St. Louis, Missouri 63144  
314-725-5588 / arch@chiodini.com

THE ARCHITECT EXPRESSLY RESERVES HIS/HER/CHE/IT/LAW AND STATUTORY AND COPYRIGHTS AND OTHER PROPERTY RIGHTS FOR THESE ARCHITECTURAL WORKS AND TECHNICAL DRAWINGS AND ANY DERIVATIVES THEREOF. THESE DRAWINGS AND DOCUMENTS ARE NOT TO BE REPRODUCED, CHANGED OR COPIED IN ANY MANNER WITHOUT THE EXPRESS WRITTEN CONSENT OF LUIS & CHARLES CHIODINI ASSOCIATES. NOR ARE THEY TO BE ASSIGNED TO ANY PARTY WITHOUT FIRST OBTAINING WRITTEN PERMISSION AND CONSENT.

3/13/17

Drawing Title  
**DOOR AND WINDOW SCHEDULE**

Approved: Project Director  
Approver

Project Title  
**VA HEALTH CARE SYSTEM**

Project Number  
438-16-104 2016.052

Building Number  
5

Drawing Number  
**A700**

Location  
VAS 438-16-104 BLDG. 5 CHAPEL  
SIOUX FALLS, SD 57105

Date  
2017.03.13

Checked  
RLK

Drawn  
C.J.N.

Owner  
**Department of Veterans Affairs**

three eighths inch = one foot  
one quarter inch = one foot  
one eighth inch = one foot  
one half inch = one foot  
three quarters inch = one foot  
one inch = one foot  
one and one half inches = one foot  
two inches = one foot  
three inches = one foot  
four inches = one foot  
five inches = one foot  
six inches = one foot  
seven inches = one foot  
eight inches = one foot  
nine inches = one foot  
ten inches = one foot  
eleven inches = one foot  
twelve inches = one foot

C:\Users\cnewcomb\Documents\Revit\_2016\2016.052\_VA Sioux Falls Chapel.dwg  
3/13/2017 3:52:10 PM  
VA FORM 08-6231

