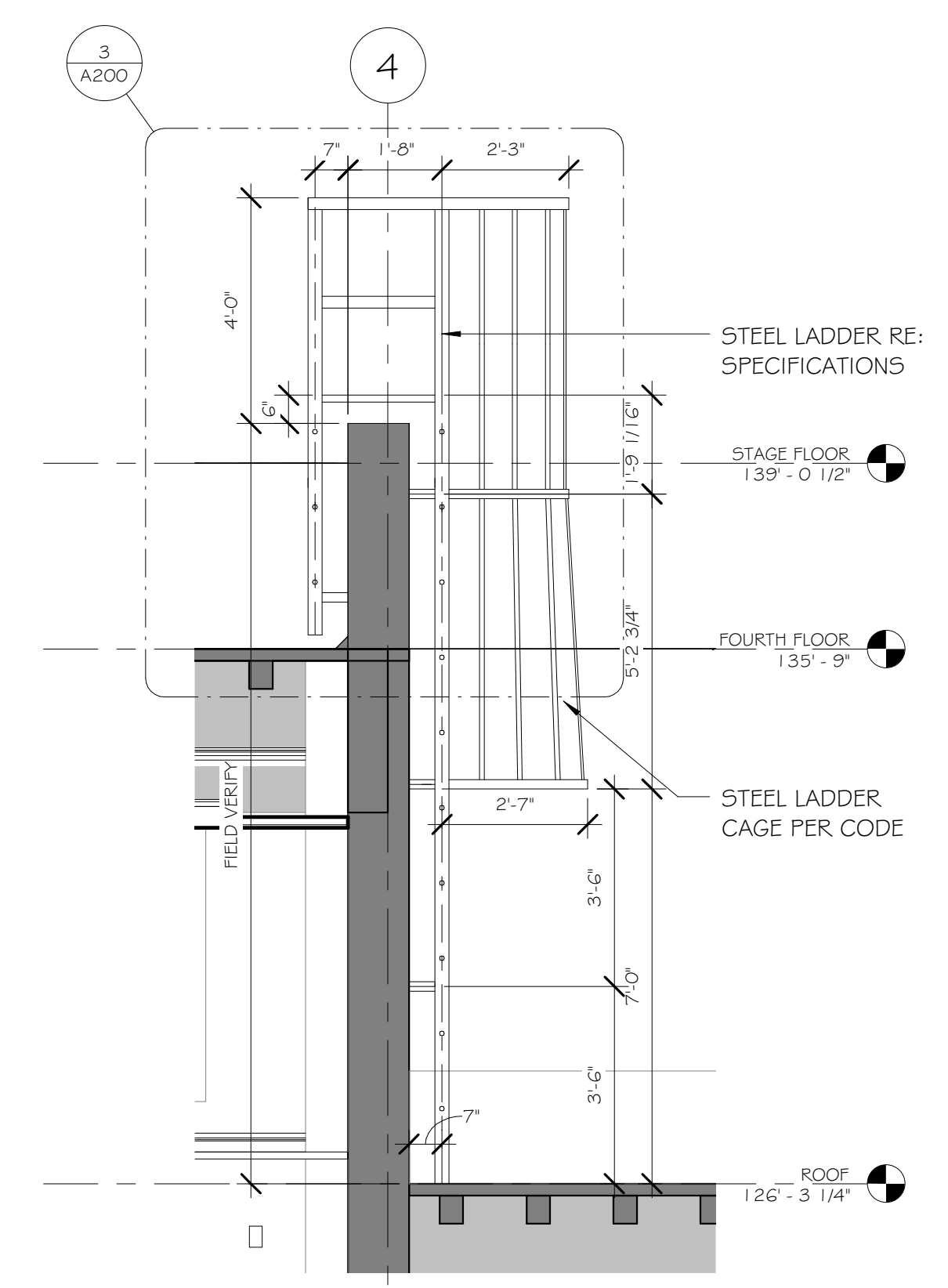
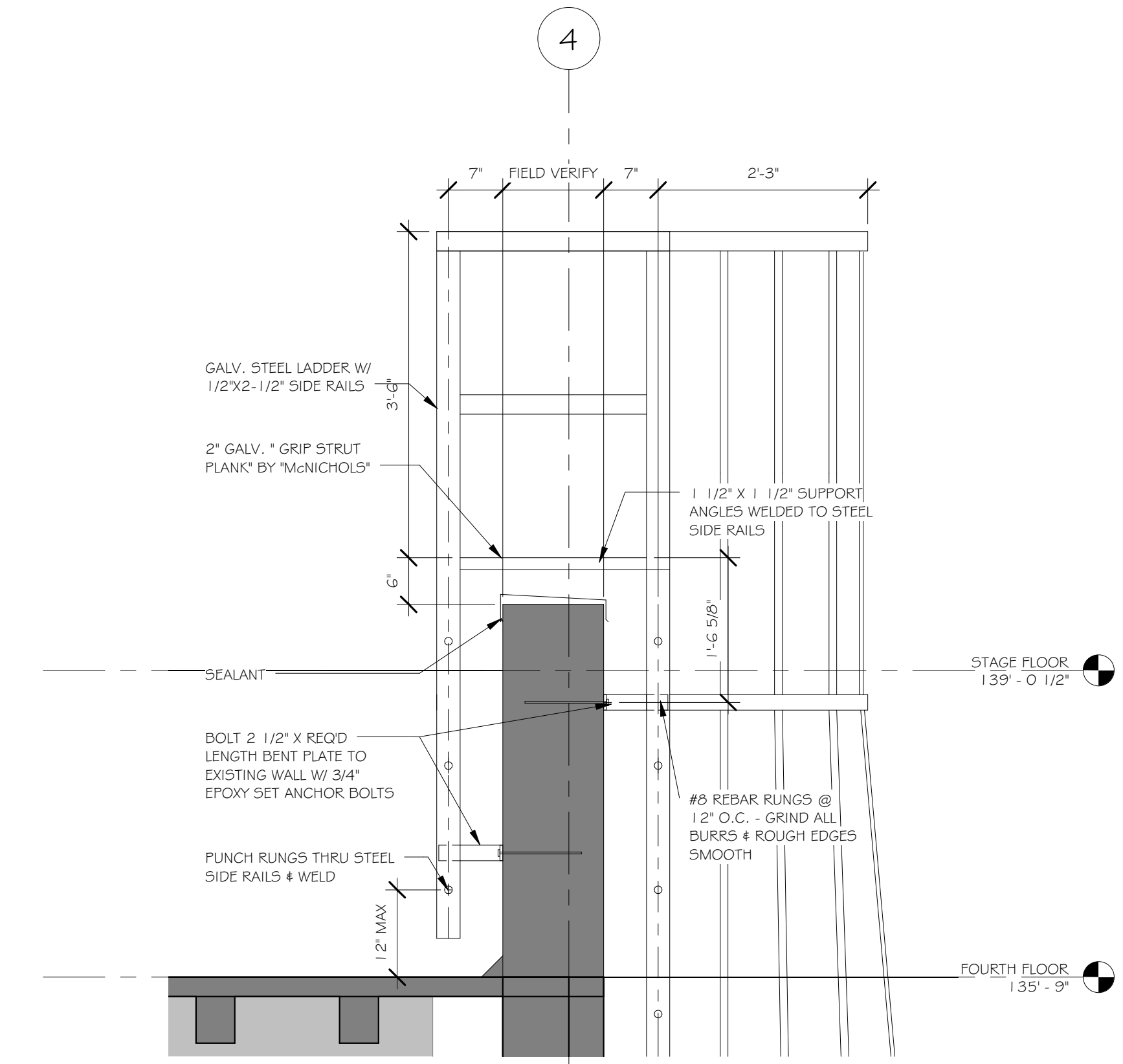


EXTERIOR ELEVATION NOTES:

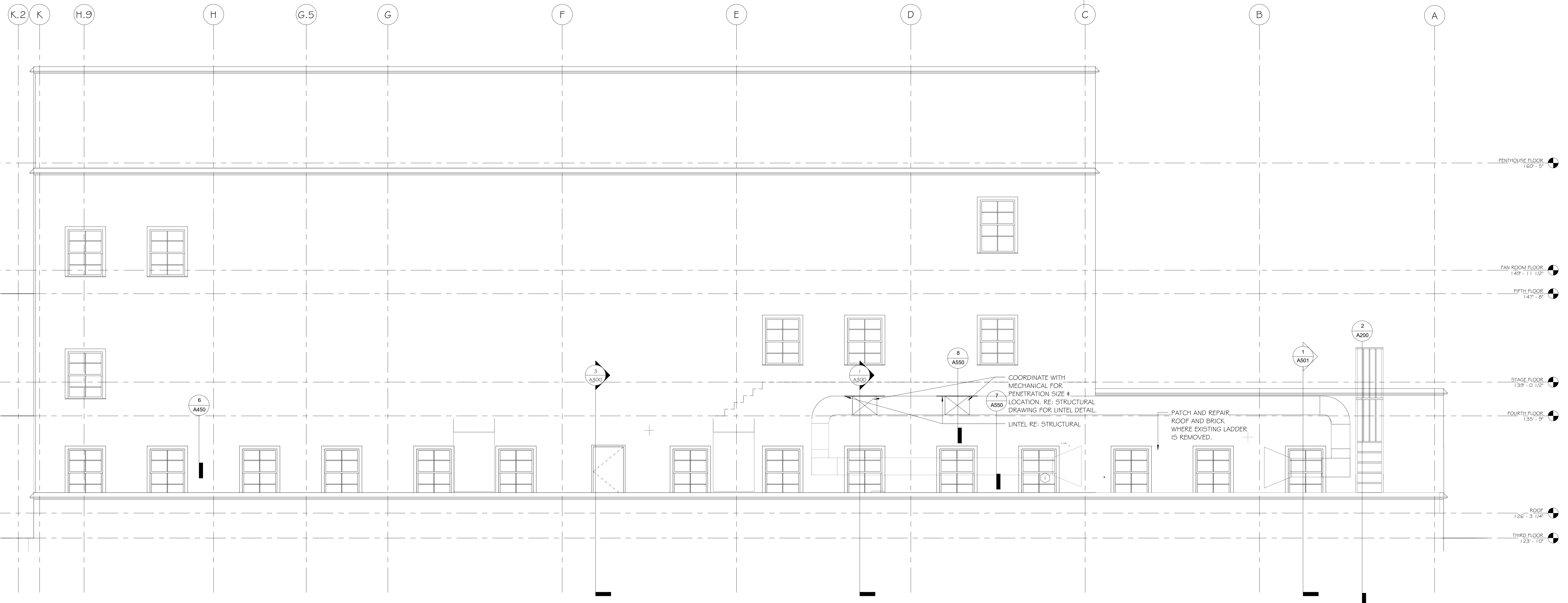
- COORDINATE ALL GRADES WITH CIVIL DRAWINGS. NO CONCRETE FOUNDATIONS ARE TO BE VISIBLE ABOVE FINISH GRADE. ONLY FINISH MATERIALS. G.C. TO FIELD VERIFY ALL GRADES AT BUILDING AND BRICK SHELF ELEVATION.
- "SP" INDICATES SPANDREL GLASS PANELS.
- "T" INDICATES TEMPERED GLASS PANEL.



2 LADDER DETAIL
A200 3/8" = 1'-0"

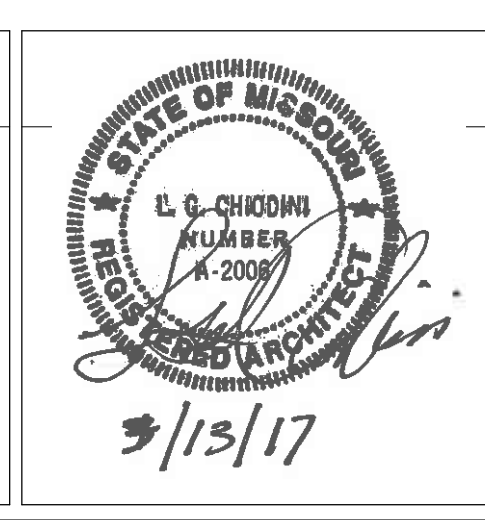


3 ENLARGED LADDER DETAIL
A200 3/4" = 1'-0"



1 NORTH EXTERIOR ELEVATION
A200 1/4" = 1'-0"

ENGINEERS/CONSULTANTS:	
WOOLPERT, INC. 343 FOUNTAINS PARKWAY SUITE 100 FAIRVIEW HEIGHTS, IL 62208 314-436-0865 314-436-0884 fax	SCI ENGINEERING, INC 130 POINT WEST BLVD. ST. CHARLES, MO 63301 636-949-8200 636-949-8269 fax
FINAL SUBMITTAL FOR CONSTRUCTION	



ARCHITECT:

Chiodini
ARCHITECTS

Architecture / Interior Design / Graphics
1401 S. Brentwood Blvd. / Suite 575 / St. Louis, Missouri 63144
314-725-5588 / arch@chiodini.com

THE ARCHITECT EXPRESSLY RESERVES HIS COMMON LAW AND STATUTORY LAW COPYRIGHTS AND OTHER PROPERTY RIGHTS FOR THESE ARCHITECTURAL WORKS AND TECHNICAL DRAWINGS AND ANY DERIVATIVES THEREOF. THESE DRAWINGS AND DOCUMENTS ARE NOT TO BE REPRODUCED, CHANGED OR COPIED IN ANY MANNER WITHOUT THE EXPRESS WRITTEN CONSENT OF THIS OFFICE. THE CONTRACTOR SHALL NOT BE HELD RESPONSIBLE FOR ANY ERRORS OR OMISSIONS WHICH MAY BE DISCOVERED IN THESE DRAWINGS WITHOUT FIRST OBTAINING WRITTEN PERMISSION AND CONSENT.

© COPYRIGHT PENDING

Drawing Title EXTERIOR ELEVATIONS
Approved: Project Director Approver

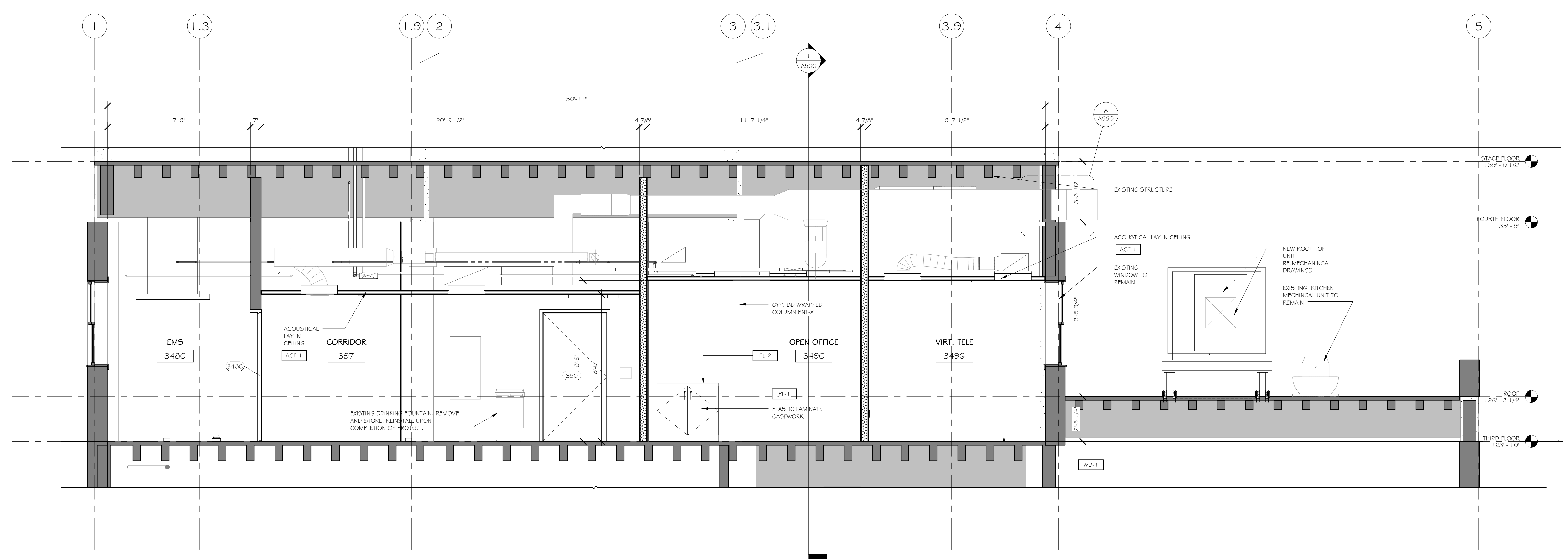
Project Title VA HEALTH CARE SYSTEM	Project Number 438-16-104 2016.052
Location VAS 438-16-104 BLDG. 5 CHAPEL SIOUX FALLS, SD 57105	Building Number 5
Date 2017.03.13	Drawing Number A200
Checked RLK	Drawn Author

Owner

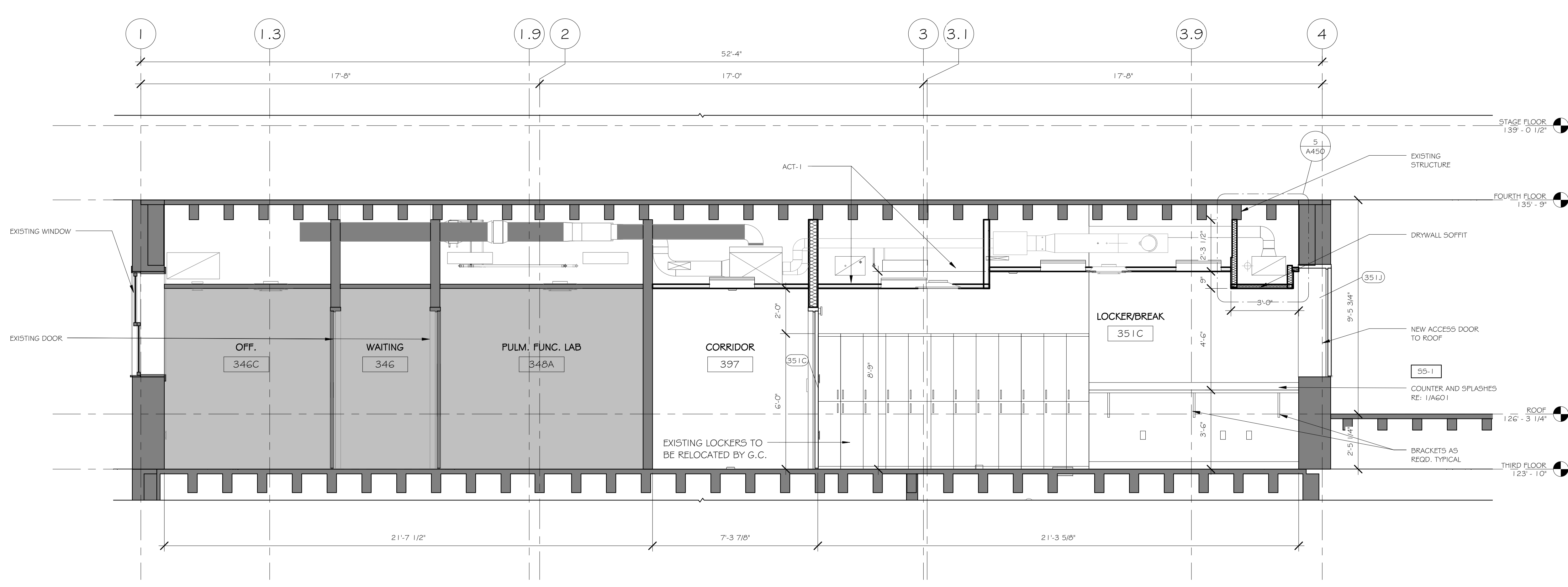
Department of Veterans Affairs

three eighths inch = one foot
 one quarter inch = one foot
 one eighth inch = one foot
 one half inch = one foot
 three quarters inch = one foot
 one inch = one foot
 one and one half inches = one foot
 three inches = one foot
 six inches = one foot
 one foot = one foot
 one and one half feet = one foot
 two feet = one foot
 three feet = one foot
 four feet = one foot
 five feet = one foot
 six feet = one foot
 seven feet = one foot
 eight feet = one foot
 nine feet = one foot
 ten feet = one foot
 eleven feet = one foot
 twelve feet = one foot
 thirteen feet = one foot
 fourteen feet = one foot
 fifteen feet = one foot
 sixteen feet = one foot
 C:\Users\cnewcomb\Documents\Revit_2016\2016.052_VA Sioux Falls Chapel_17mwevcom.rvt
 3/13/2017 3:51:45 PM
 VA FORM 08-6231

three inches = one foot
 one and one half inches = one foot
 one inch = one foot
 three quarters inch = one foot
 one half inch = one foot
 three eighths inch = one foot
 one quarter inch = one foot
 one eighth inch = one foot



SECTION THROUGH ROOF
 A300 3/8" = 1'-0"

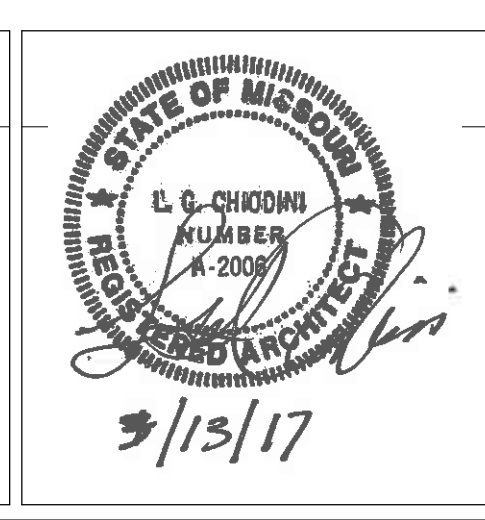


SECTION - THIRD LEVEL
 A300 3/8" = 1'-0"

ENGINEERS/CONSULTANTS:
 WOOLPERT, INC.
 343 FOUNTAINS PARKWAY
 SUITE 100
 FAIRVIEW HEIGHTS, IL 62208
 314-436-0865
 314-436-0884 fax

SCI ENGINEERING, INC
 130 POINT WEST BLVD.
 ST. CHARLES, MO 63301
 636-949-8200
 636-949-8269 fax

FINAL SUBMITTAL
 FOR CONSTRUCTION



ARCHITECT:
Chiodini
 ARCHITECTS
 Architecture / Interior Design / Graphics
 1401 S. Brentwood Blvd. / Suite 575 / St. Louis, Missouri 63144
 314-725-5088 / arch@chiodini.com

THE ARCHITECT EXPRESSLY RESERVES HIS COMMON LAW AND STATUTORY LAW COPYRIGHTS AND OTHER PROPERTY RIGHTS FOR THESE ARCHITECTURAL WORKS AND TECHNICAL DOCUMENTS AND ANY DERIVATIVES THEREOF. THESE DRAWINGS AND DOCUMENTS ARE NOT TO BE REPRODUCED, CHANGED OR COPIED IN ANY MANNER WITHOUT THE EXPRESS WRITTEN CONSENT OF LUIS & CHIODINI ARCHITECTS. NOR ARE THEY TO BE ASSIGNED TO ANY PARTY WITHOUT FIRST OBTAINING WRITTEN PERMISSION AND CONSENT.

© COPYRIGHT PENDING

Drawing Title
BUILDING SECTIONS

Approved: Project Director
 Approver

Project Title
VA HEALTH CARE SYSTEM

Location
 VAS 438-16-104 BLDG. 5 CHAPEL
 SIOUX FALLS, SD 57105

Date
 2017.03.13

Checked
 RLK

Drawn
 C.J.N

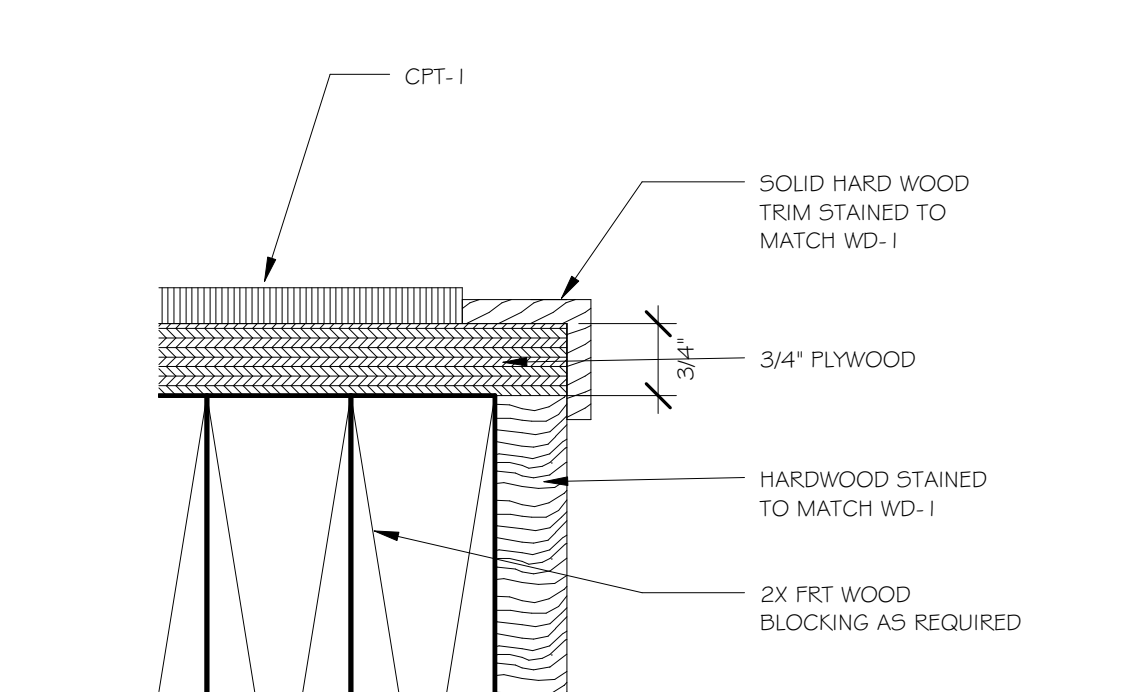
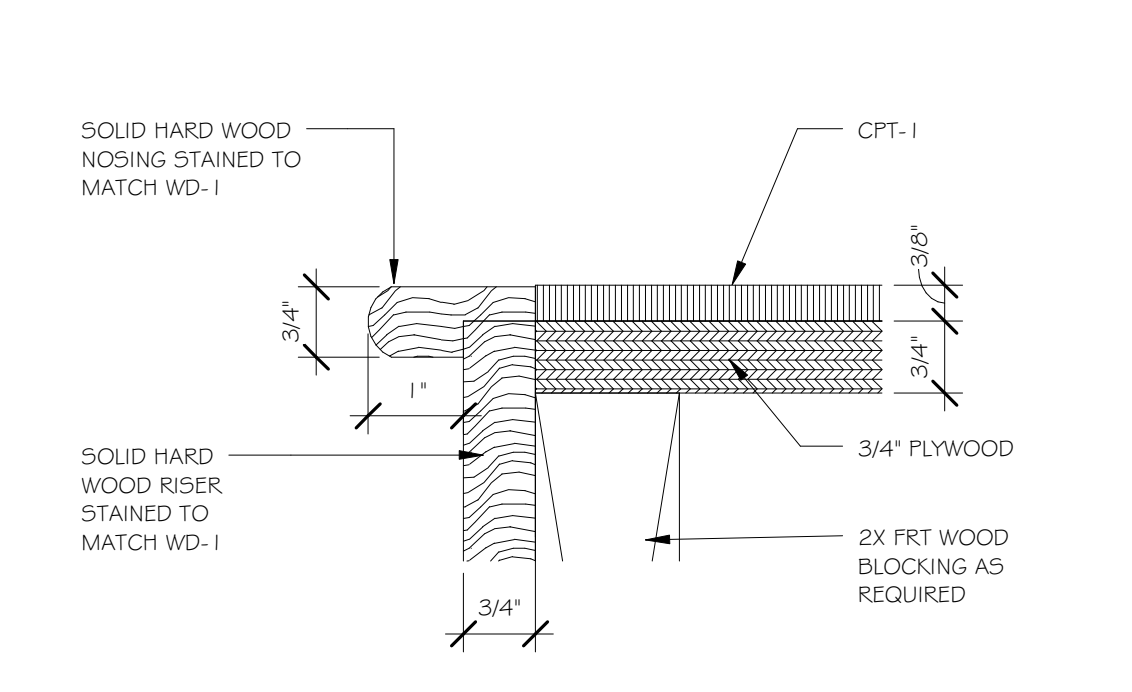
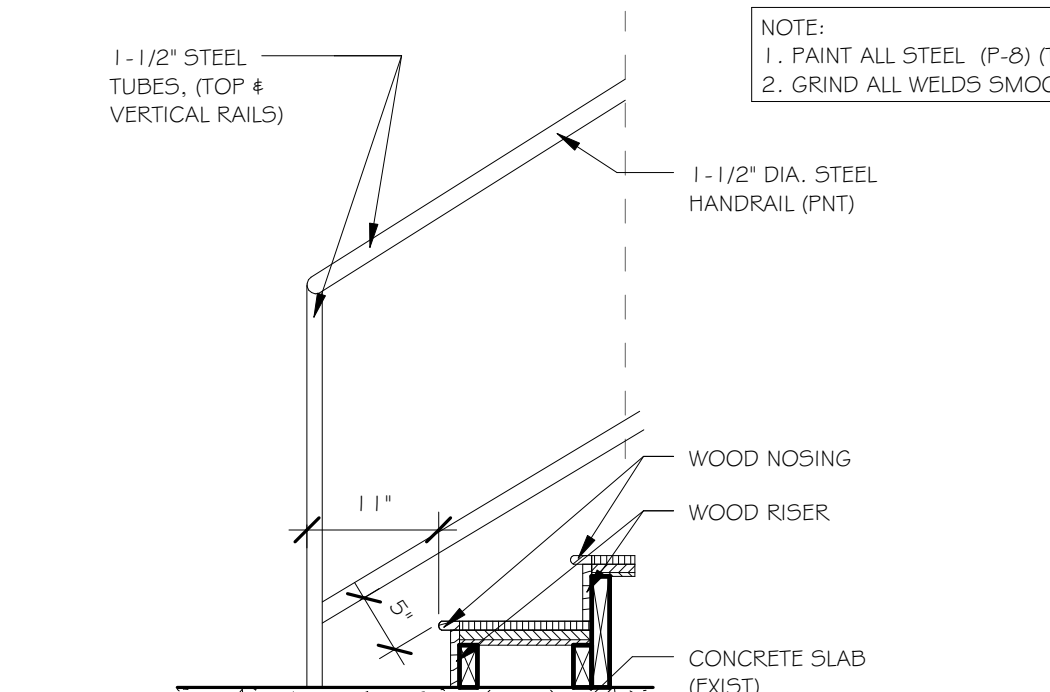
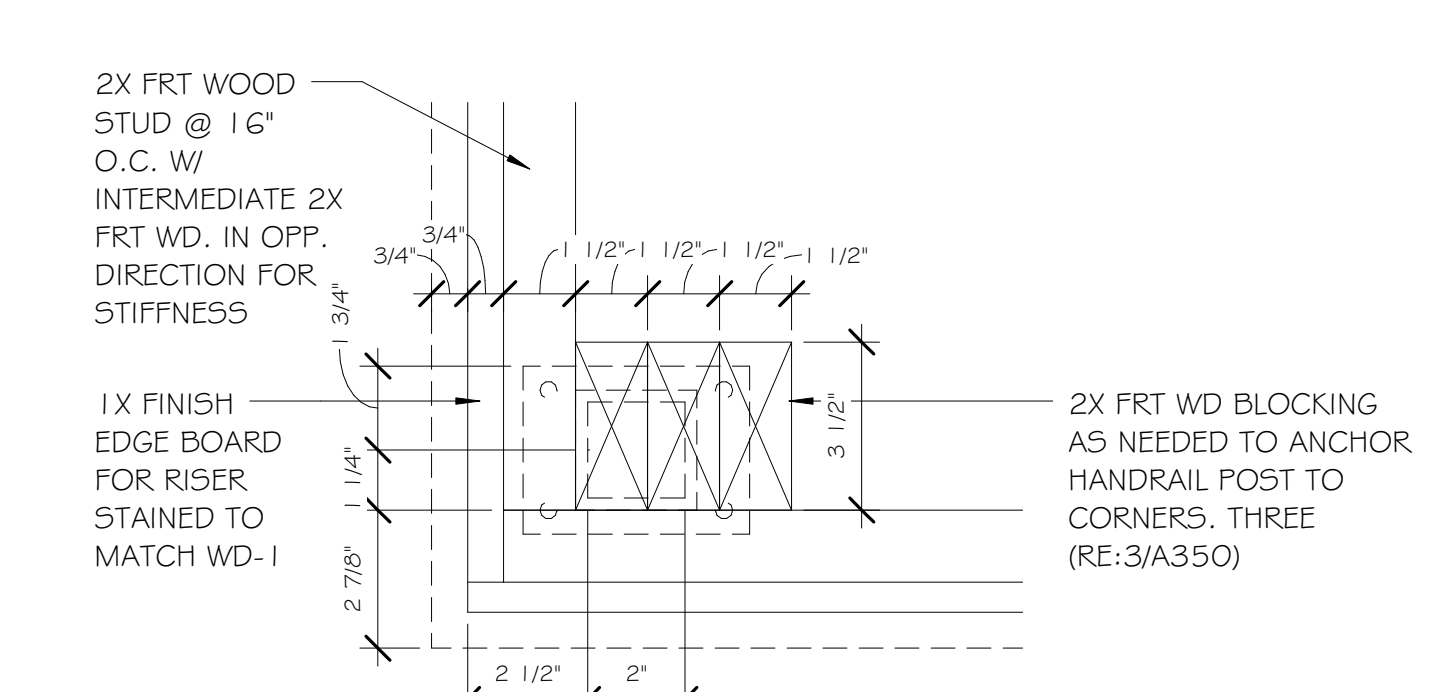
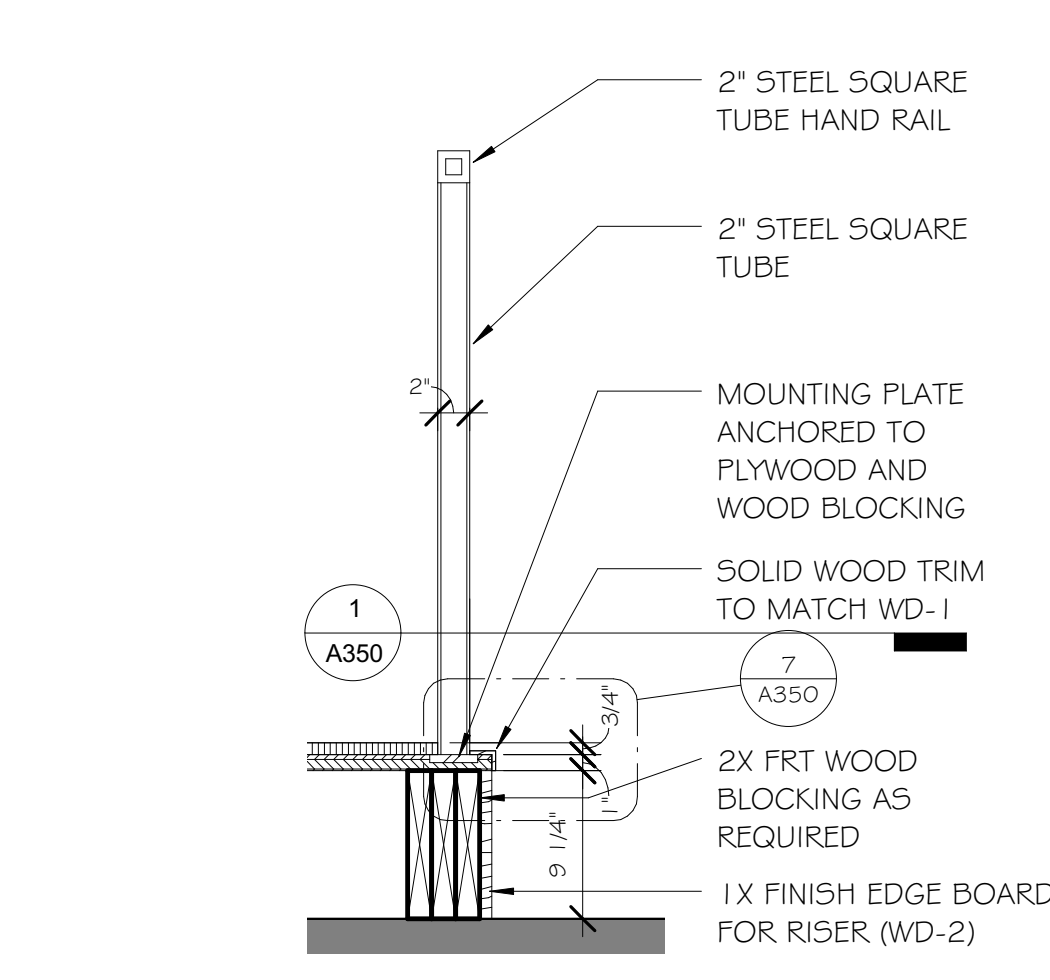
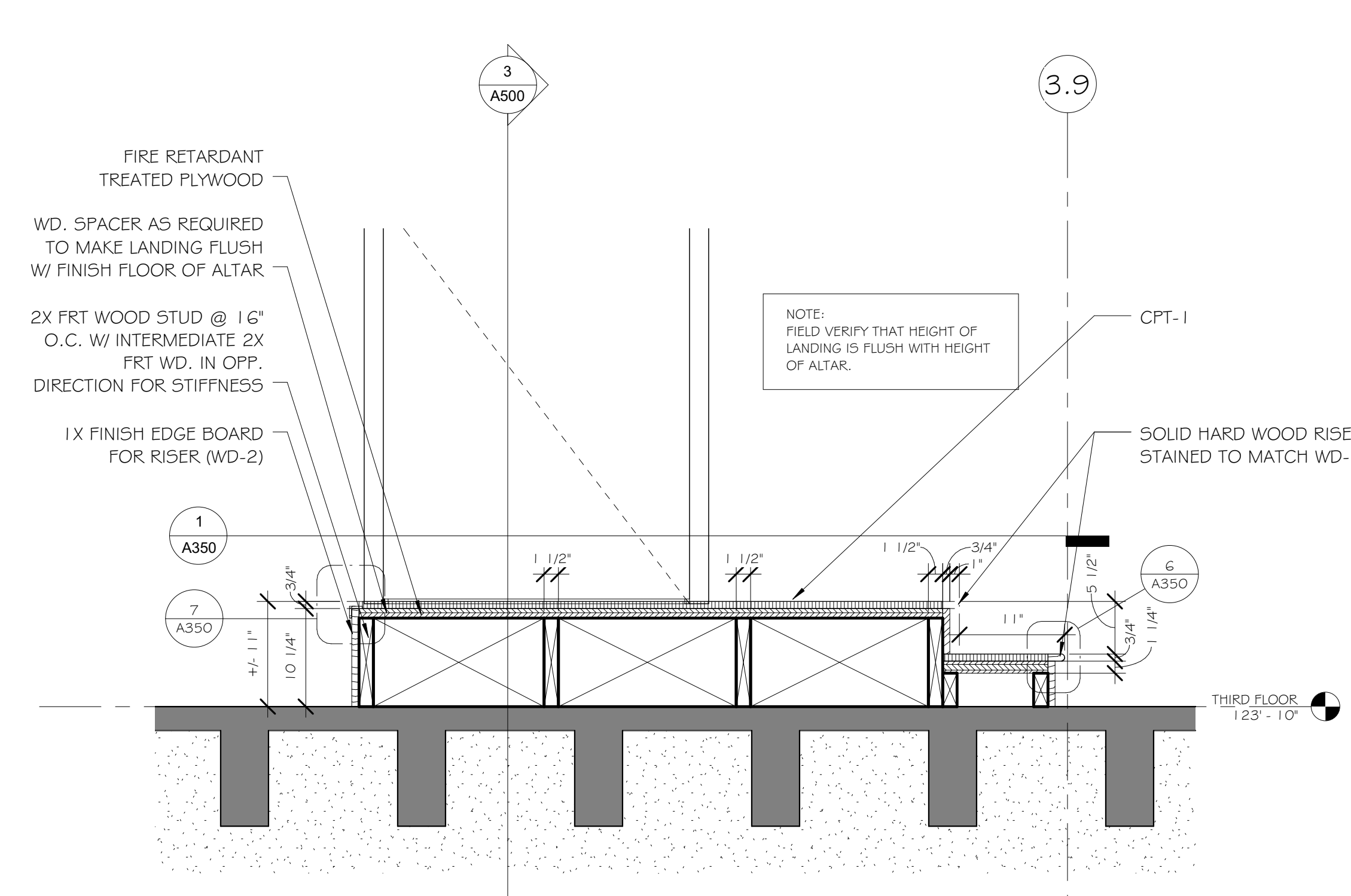
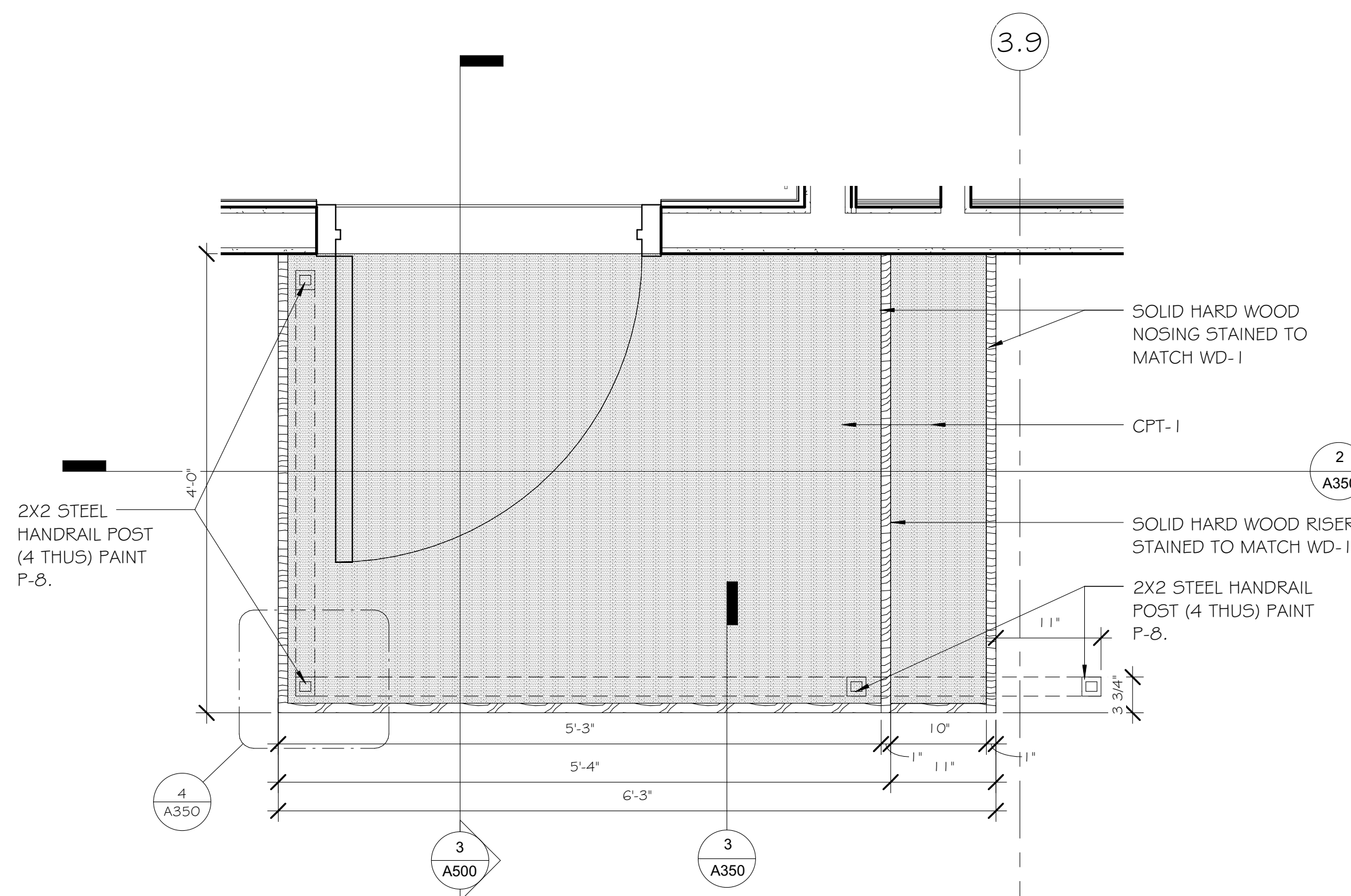
Project Number
 438-16-104 2016.052

Building Number
 5

Drawing Number
A300

Owner
Department of Veterans Affairs

three inches = one foot
 one and one half inches = one foot
 one inch = one foot
 three quarters inch = one foot
 one half inch = one foot
 three eighths inch = one foot
 one quarter inch = one foot
 one eighth inch = one foot
 one sixteenth inch = one foot
 3/13/2017 3:51:49 PM C:\Users\cnewcombe\Documents\Revit_2016\2016.052_VA Sioux Falls Chapel.dwg



ENGINEERS/CONSULTANTS:
 WOOLPERT, INC. 343 FOUNTAINS PARKWAY SUITE 100 FAIRVIEW HEIGHTS, IL 62208 314-436-0865 314-436-0884 fax
 SCI ENGINEERING, INC 130 POINT WEST BLVD. ST. CHARLES, MO 63301 636-949-8200 636-949-8269 fax

FINAL SUBMITTAL FOR CONSTRUCTION

 L.S. CHIODINI
 3/13/17

ARCHITECT:
Chiodini ARCHITECTS
 Architecture / Interior Design / Graphics
 1401 S. Brentwood Blvd. / Suite 575 / St. Louis, Missouri 63144 314-725-5588 / arch@chiodini.com

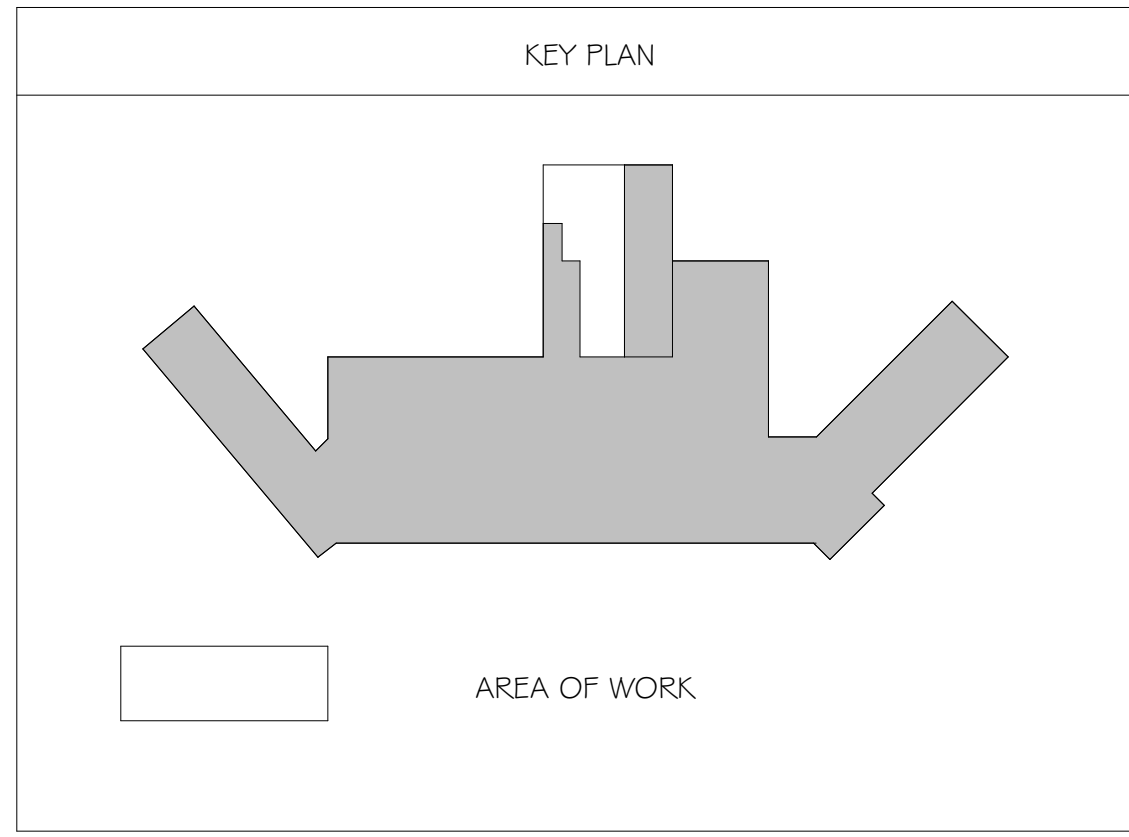
Drawing Title
STAIR SECTIONS AND DETAILS
 Approved: Project Director
 Approver

Project Title
VA HEALTH CARE SYSTEM
 Location
 VAS 438-16-104 BLDG. 5 CHAPEL
 SIOUX FALLS, SD 57105
 Date 2017.03.13
 Checked RLK
 Drawn C.J.N.

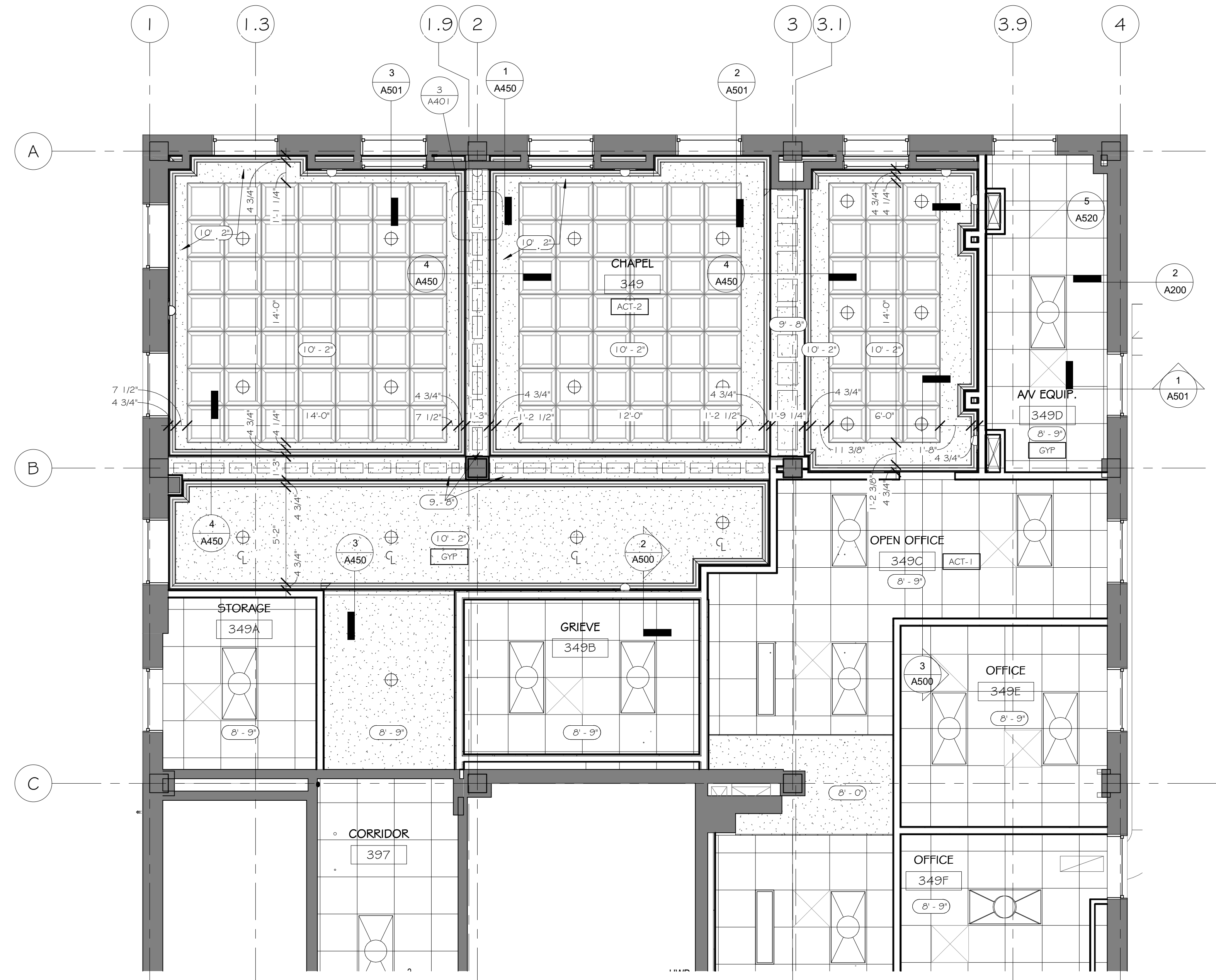
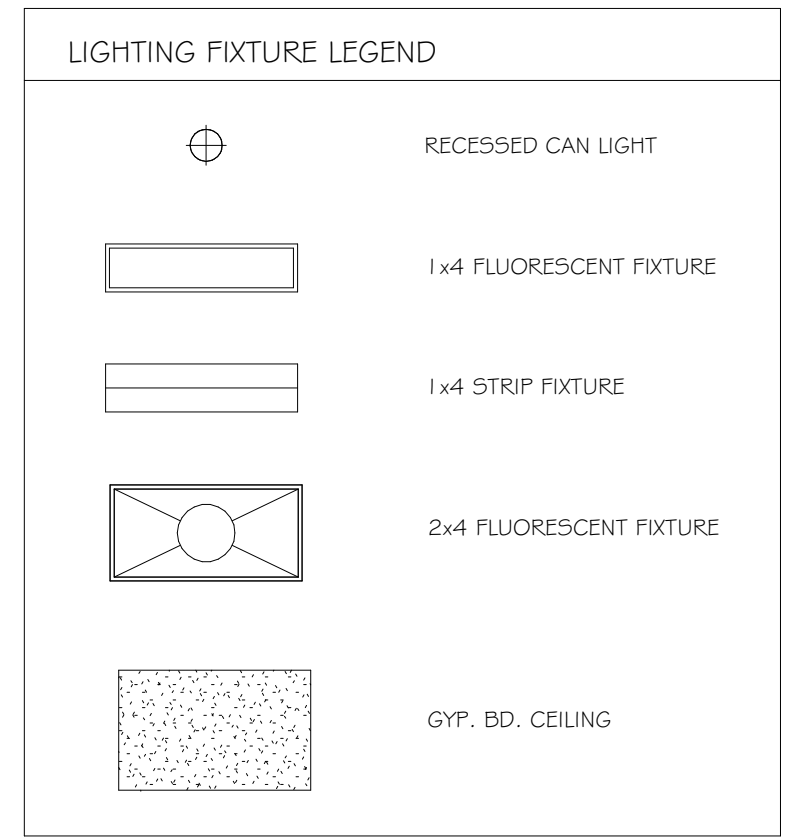
Project Number
 438-16-104 2016.052
 Building Number
 5
 Drawing Number
A350

Owner
 Department of Veterans Affairs

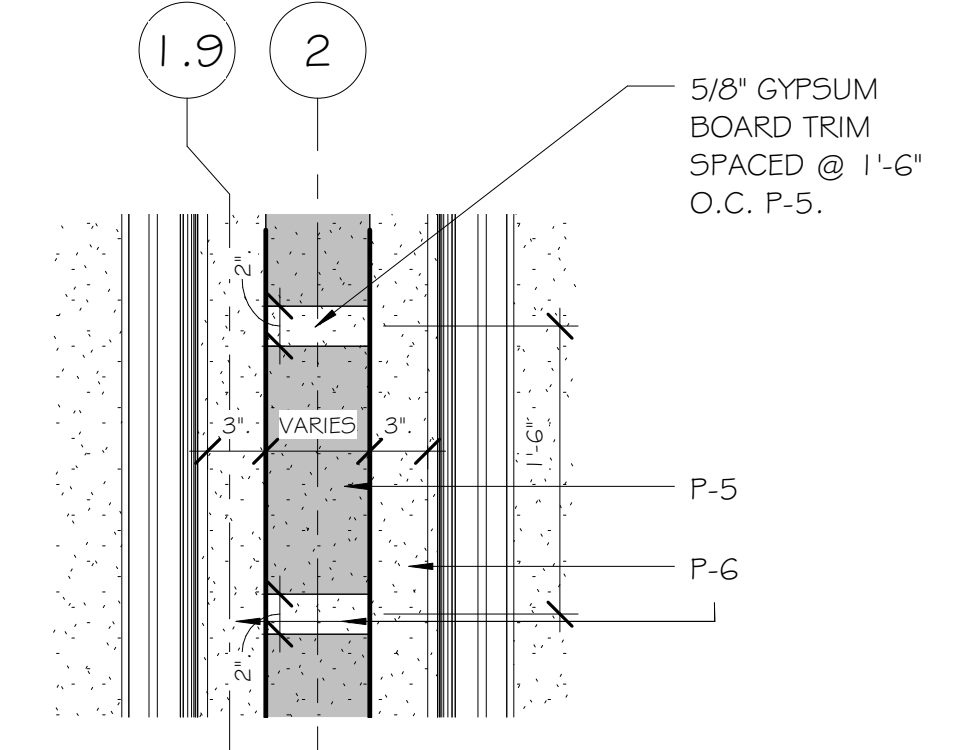
three inches = one foot
 one and one half inches = one foot
 one inch = one foot
 one half inch = one foot
 three quarters inch = one foot
 one quarter inch = one foot
 one eighth inch = one foot
 one sixteenth inch = one foot



- GENERAL CEILING NOTES:**
- ALL CEILING HEIGHTS ARE TO FACE OF TILE UNLESS NOTED OTHERWISE.
 - SHADDED PORTIONS ARE TO RECEIVE SOUND BATT INSULATION (INCLUDING FULL HEIGHT OF PARTITIONS ABOVE WINDOW AND DOOR HEADS).
 - COORDINATE ALL LIGHTING FIXTURE LOCATIONS WITH ELECTRICAL DRAWINGS - REPORT ANY DISCREPANCIES TO ARCHITECT PRIOR TO CONSTRUCTION.
 - ALL EXPOSED METAL DECK, STEEL BAR JOISTS, BEAMS, ANGLES, CONDUITS, JUNCTION BOXES, DUCTWORK, ETC. ARE TO BE PAINTED.
 - ALL LIGHT FIXTURE LOCATIONS ARE TO BE COORDINATED WITH FINAL FURNITURE PLANS. COORDINATE WITH ARCHITECT.
 - ALL HVAC ROUTING IS TO BE COORDINATED WITH ARCHITECT.
 - ALL LIGHTING PHOTOMETRICS AND EXACT FIXTURE QUANTITIES ARE THE RESPONSIBILITY OF THE DESIGN / BUILD CONTRACTOR AND TO COORDINATE WITH ARCHITECT.
 - ALL CEILING GRID MAINS TO RUN IN THE LONG DIRECTION OF THE LIGHTS.
 - ALL GYP. CEILINGS SHALL BE PAINTED P-7 UNLESS OTHERWISE NOTED.
 - ACT-1 PERIMETER TRIM SHALL FOLLOW FORM OF WINDOW FRAME. FRAME SHALL NOT BE CUT.
 - ALL CEILINGS SHALL BE ACT-1 UNLESS OTHERWISE NOTED ON PLANS.
 - ACT-1 PERIMETER TRIM SHALL FOLLOW FORM OF WINDOW FRAME. FRAME SHALL NOT BE CUT.



2 ENLARGED THIRD FLOOR RCP
 1/4" = 1'-0"



3 ENLARGED CHAPEL SOFFIT DETAIL
 1" = 1'-0"

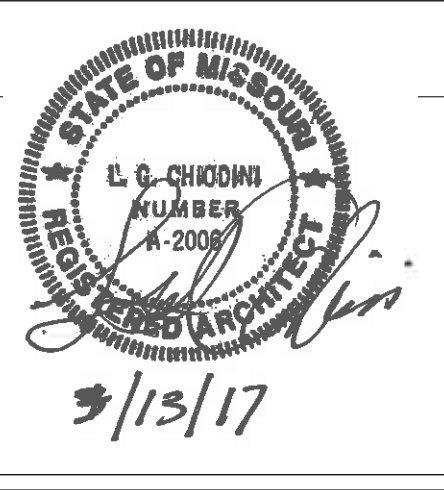
1 THIRD FLOOR RCP
 1/8" = 1'-0"

ENGINEERS/CONSULTANTS:

WOOLPERT, INC.
 130 POINT WEST BLVD.
 SUITE 100
 FAIRVIEW HEIGHTS, IL 62208
 314-436-0865
 314-436-0884 fax

SCI ENGINEERING, INC
 130 POINT WEST BLVD.
 ST. CHARLES, MO 63301
 636-949-8200
 636-949-8269 fax

FINAL SUBMITTAL FOR CONSTRUCTION



ARCHITECT:

Chiodini
ARCHITECTS

Architecture / Interior Design / Graphics
 1401 S. Brentwood Blvd. / Suite 575 / St. Louis, Missouri 63144
 314-725-5088 / arch@chiodini.com

Drawing Title
THIRD FLOOR RCP

Approved: Project Director
 Approver

Project Title
VA HEALTH CARE SYSTEM

Location
 VAS 438-16-104 BLDG. 5 CHAPEL
 SIOUX FALLS, SD 57105

Date
 2017.03.13

Checked
 RLK

Drawn
 C.J.N

Project Number
 438-16-104 2016.052

Building Number
 5

Drawing Number
A401

Owner
Department of Veterans Affairs

Scale: As indicated