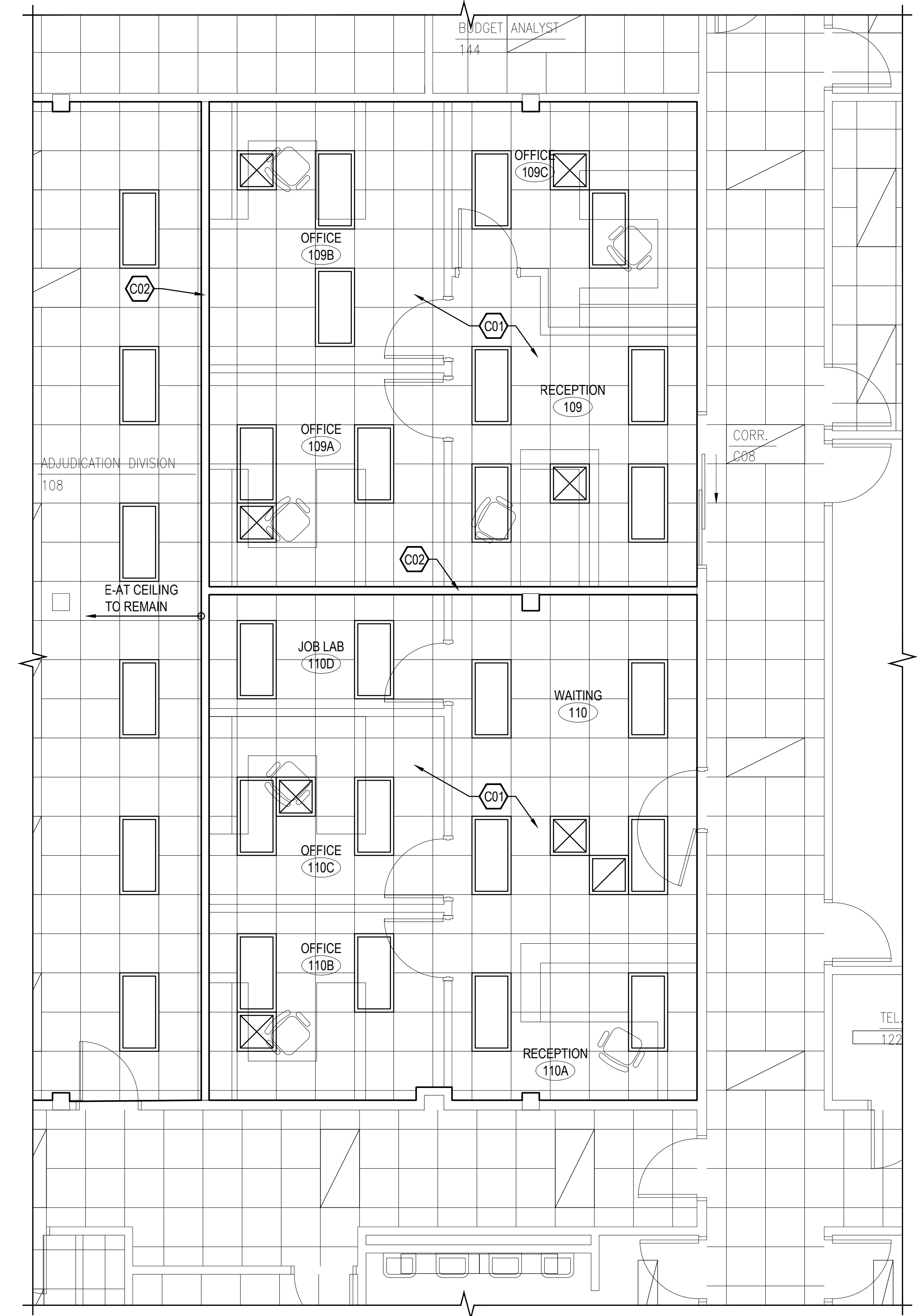


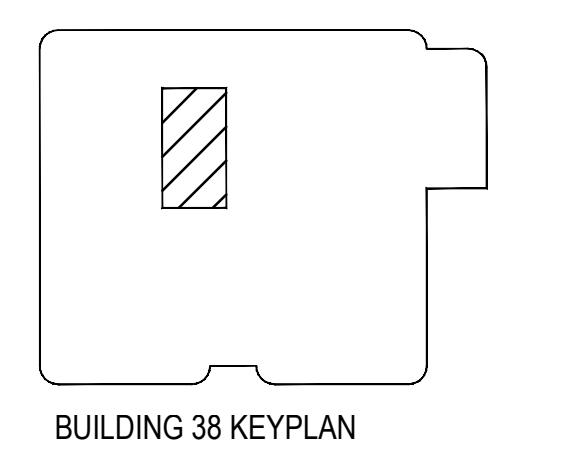
one eighth inch = one foot
 one quarter inch = one foot
 three eighths inch = one foot
 one half inch = one foot
 three quarters inch = one foot
 one inch = one foot
 one and one half inches = one foot
 three inches = one foot

REFLECTED CEILING PLAN KEY NOTES

- (C01) EXISTING CEILING AND GRID TO REMAIN. REMOVE AND REPAIR GRID AS REQUIRED AT RELOCATED LIGHTS.
- C02 REMOVE CEILING GRID AT WALLS EXTENDING TO STRUCTURE. PROVIDE NEW WALL ANGLE EACH SIDE OF NEW WALL.



1 REFLECTED CEILING PLAN
 SCALE: 1/4" = 1'-0" N



FINAL CONSTRUCTION DOCUMENTS
 FULLY SPRINKLERED

Revisions	Date

CONSULTANTS:

KHA
 Kenneth Hahn
 Architects

FARRIS ENGINEERING
 OMAHA | LINCOLN | DES MOINES | COLORADO SPRINGS
 farris-usa.com
 COPYRIGHT FEI #164008
 This document and the information contained may not be reproduced or excerpted from without the express written permission of Farris Engineering, Inc. Unauthorized copying, disclosure or construction use are prohibited by the copyright law.

ARCHITECT/ENGINEERS:

21 Delta Engineers, LLC
 14216 Dayton Cir - Suite #5
 Omaha, Nebraska 68137-5566
 PH: (402) 496-4115
 Fax: (402) 384-8900

Drawing Title
REFLECTED CEILING PLAN - BUILDING 38

Approved Project Director

Project Title
CT SCANNER SITE PREP DESIGN

Location
SIoux FALLS, SD VAMC

Date
 JANUARY 20, 2017

Checked
 KJH

Drawn
 DJK

Project Number
438-15-100

Building Number
38

Drawing Number
A-801

Dwg. 9 of 37

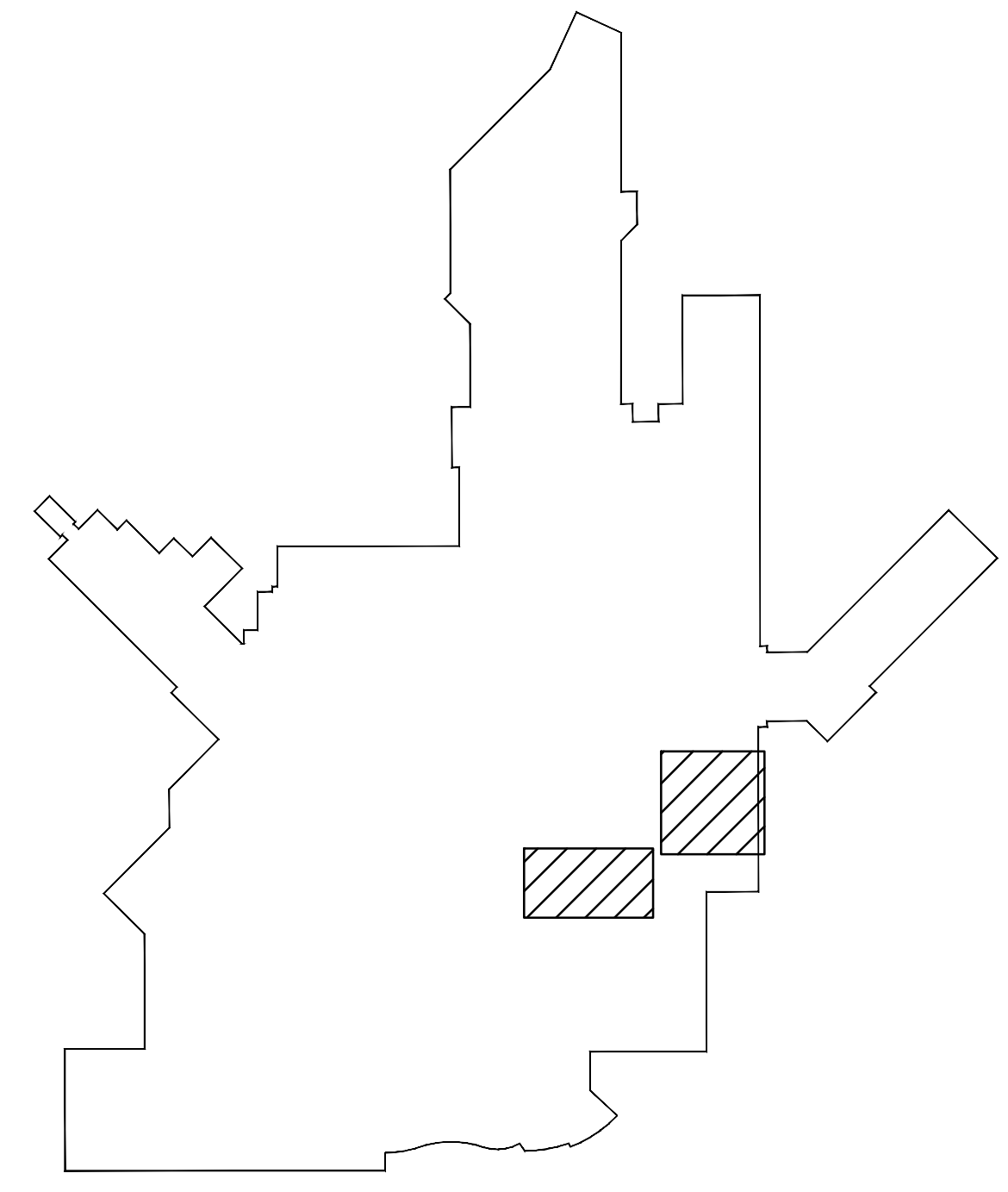
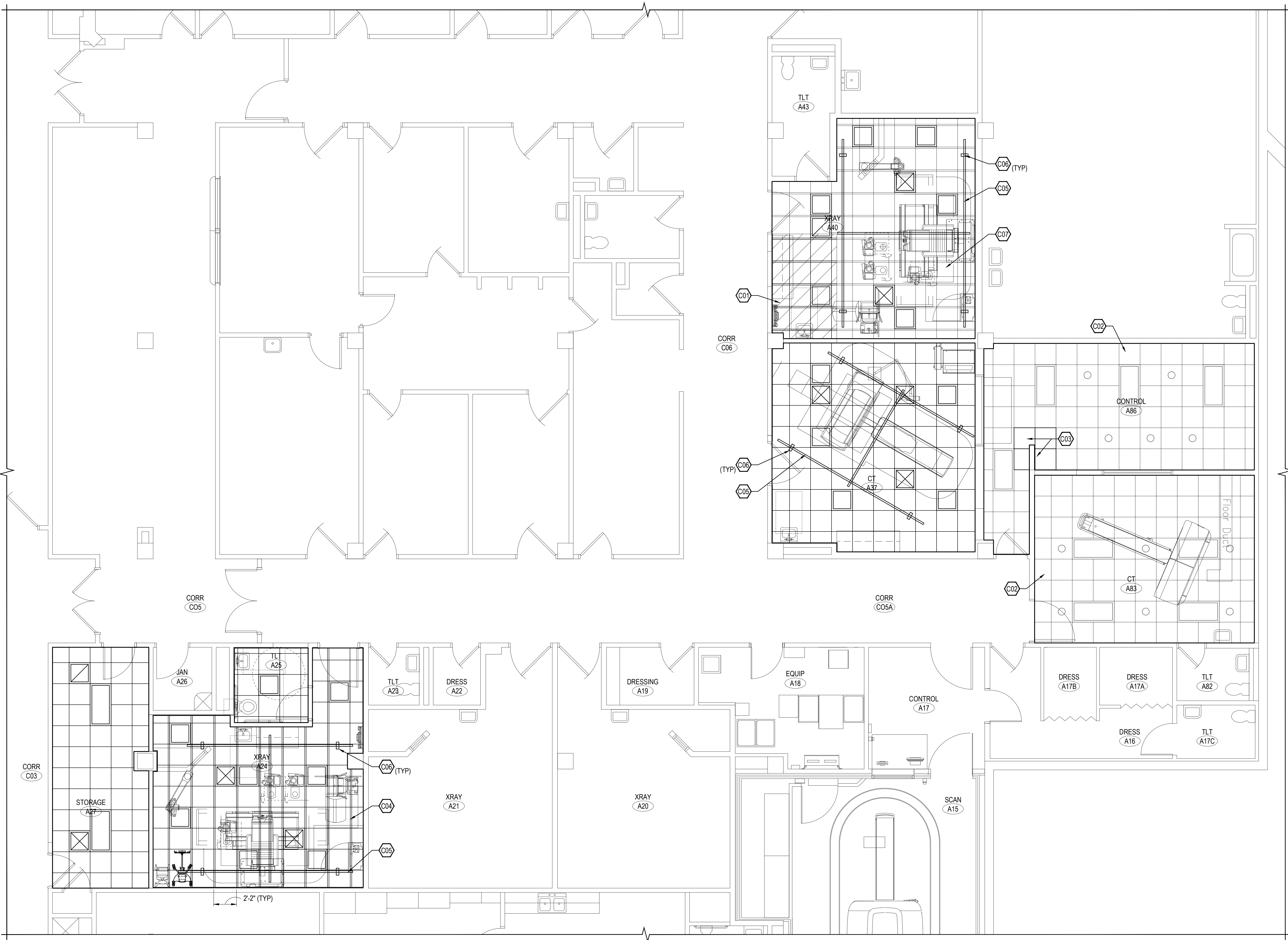
Office of
 Construction
 and Facilities
 Management

Department of
 Veterans Affairs

three inches = one foot
one and one half inches = one foot
one inch = one foot
three quarters inch = one foot
one half inch = one foot
three eighths inch = one foot
one quarter inch = one foot
one eighth inch = one foot


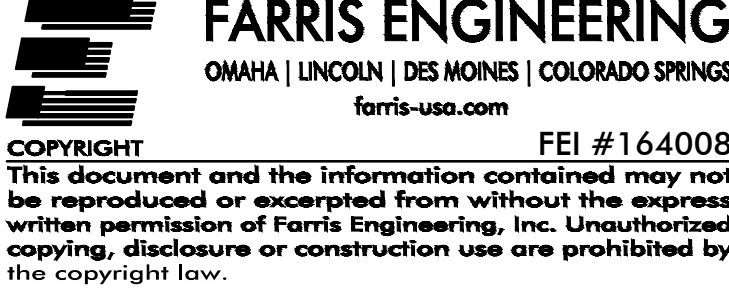
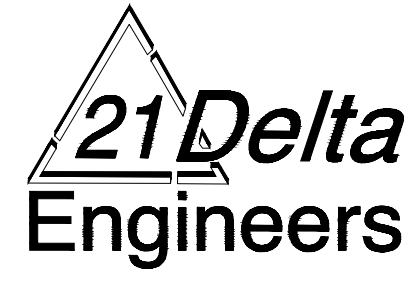

REFLECTED CEILING PLAN KEY NOTES

- C01 EXTEND EXISTING CEILING GRID AND UNISTRUT IN AREA SHOWN HATCHED.
- C02 EXISTING CEILING TO REMAIN.
- C03 PATCH CEILING AS REQUIRED DUE TO REMOVAL OF WALL.
- C04 UNISTRUT AT 2'-2" O.C. - SEE DETAIL 10/A-401.
- C05 LIFT MOTOR BY OTHERS (N.I.C.)
- C06 LIFT SUPPORT POINT. SEE DETAILS 7, 9, AND 11 ON SHEET A-401.
- C07 PROVIDE NEW CEILING TILES IN EXISTING GRID.



1 REFLECTED CEILING PLAN
SCALE: 1/4" = 1'-0"

BUILDING 5 KEYPLAN
FINAL CONSTRUCTION DOCUMENTS
FULLY SPRINKLERED

Revisions: _____ Date: _____	CONSULTANTS:  Kenneth Hahn Architects	 FARRIS ENGINEERING <small>OMAHA LINCOLN DES MOINES COLORADO SPRINGS farris-usa.com</small> <small>COPYRIGHT FEI #164008 This document and the information contained may not be reproduced or excerpted from without the express written permission of Farris Engineering, Inc. Unauthorized copying, disclosure or construction use are prohibited by the copyright law.</small>	ARCHITECT/ENGINEERS:  21 Delta Engineers 21 Delta Engineers, LLC 14216 Dayton Cir - Suite #5 Omaha, Nebraska 68137-5566 PH: (402) 496-4115 Fax: (402) 384-8900	Drawing Title REFLECTED CEILING PLAN - BUILDING 5 Approved Project Director _____	Project Title CT SCANNER SITE PREP DESIGN Location SIoux FALLS, SD VAMC Date JANUARY 20, 2017	Project Number 438-15-100 Building Number 5 Drawing Number A-802 Dwg. 10 of 37	Office of Construction and Facilities Management 
	<small>VA FORM 08-6231</small>						