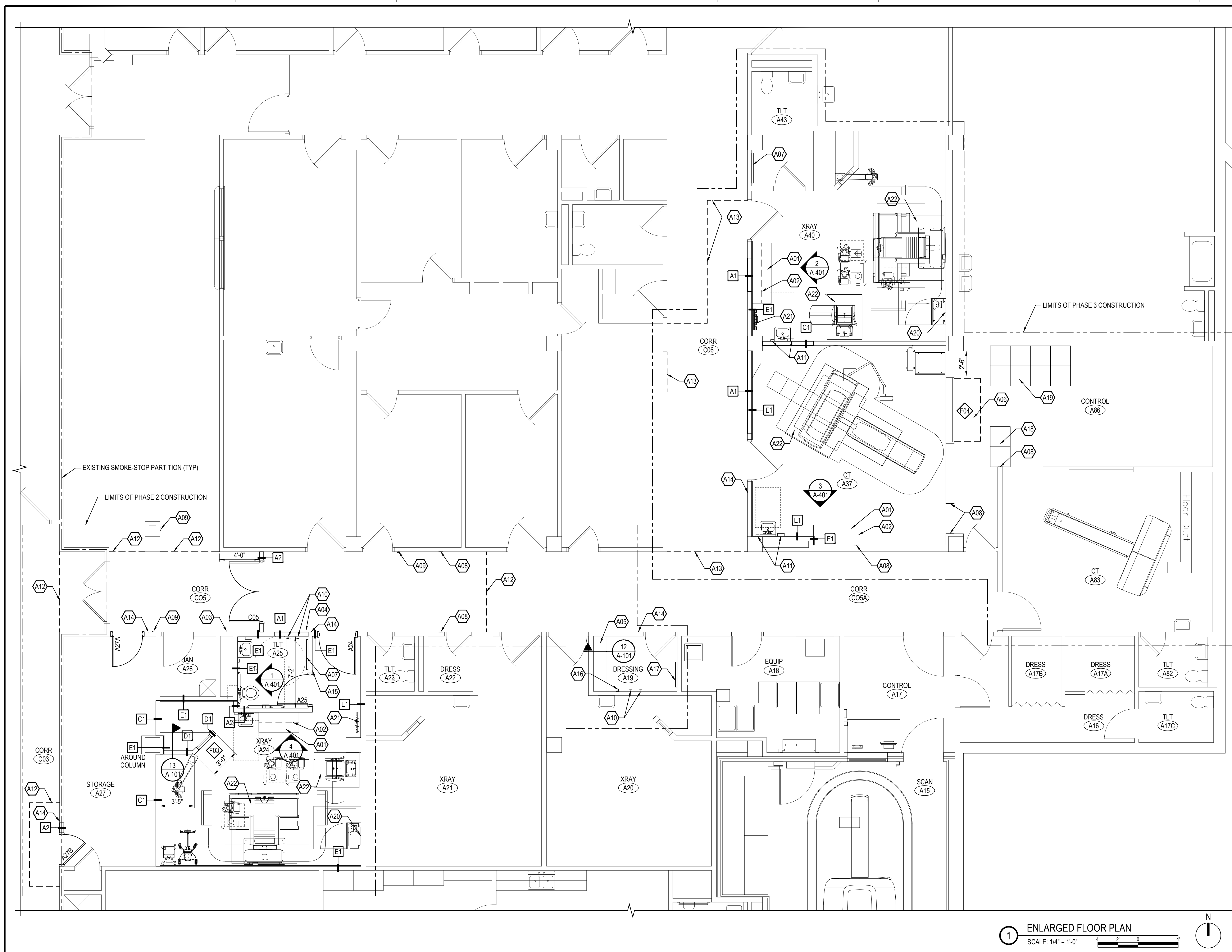


FLOOR PLAN KEY NOTES

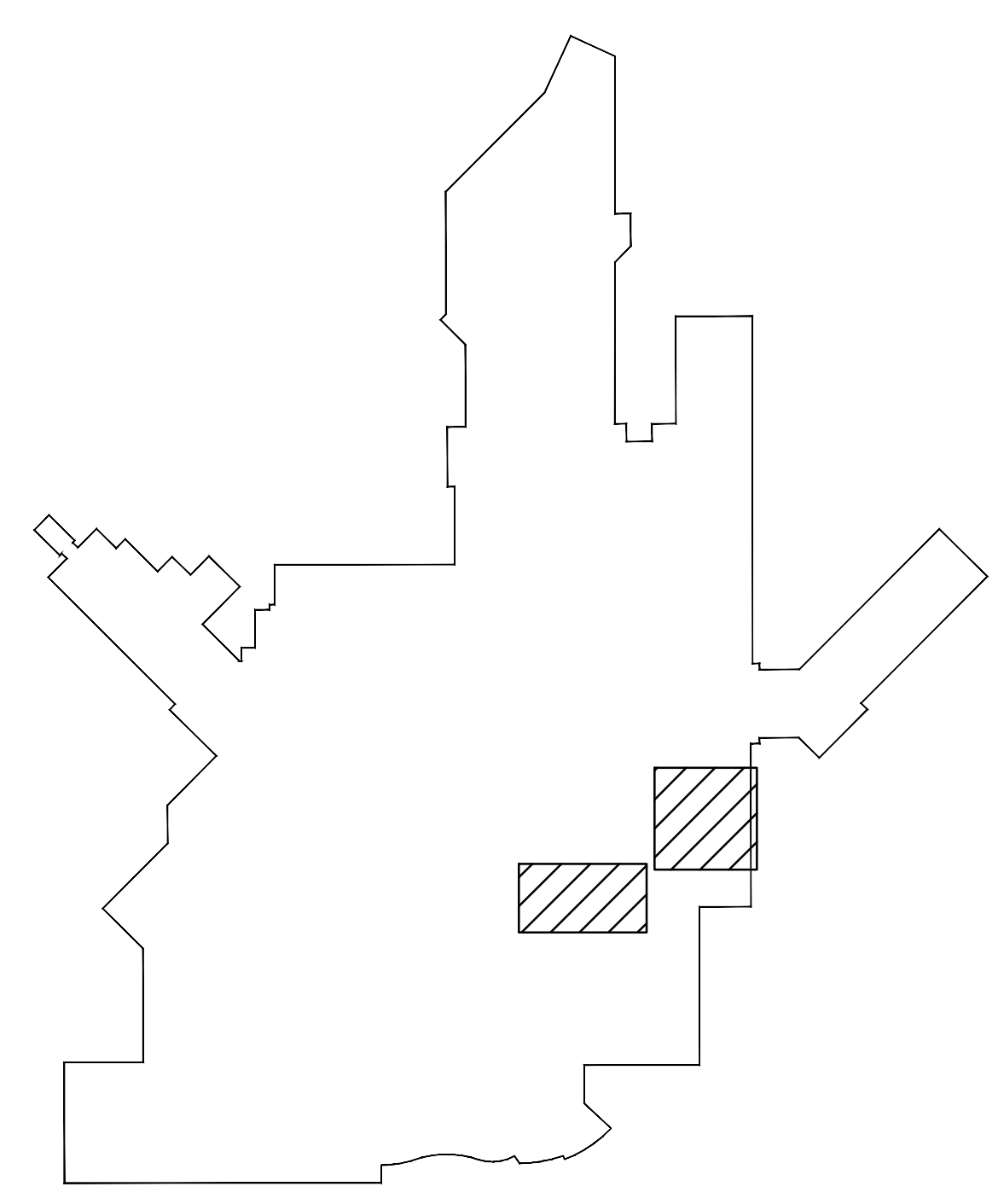
- A01 NEW BASE CABINETS WITH NEW COUNTERTOP.
- A02 NEW UPPER CABINETS.
- A03 CUT SALVAGED CHAIR RAIL TO LENGTH AND RE-INSTALL.
- A04 NEW CHAIR RAIL TO MATCH EXISTING.
- A05 FULL-LENGTH BENCH PROVIDED AND INSTALLED BY CONTRACTOR.
- A06 DESK BY OTHERS (N.I.C.)
- A07 FOLDING SEAT FS-1. PROVIDE 2x WOOD BLOCKING WITHIN WALL FOR ATTACHMENT.
- A08 PATCH WALL WHERE ADJACENT WALL HAS BEEN REMOVED. SURFACE SHALL BE FLUSH WITH ADJACENT WALL SURFACES.
- A09 AUTOMATIC DOOR OPERATOR - SEE ELECTRICAL.
- A10 ROBE HOOK RH-1 MOUNTED AT 48" A.F.F. PROVIDED AND INSTALLED BY CONTRACTOR.
- A11 RELOCATED PAPER TOWEL DISPENSER AND SOAP DISPENSER.
- A12 PHASE 2 TEMPORARY PARTITION; COORDINATE WITH MECHANICAL AND ELECTRICAL WORK.
- A13 PHASE 3 TEMPORARY PARTITION; COORDINATE WITH MECHANICAL AND ELECTRICAL WORK.
- A14 SIGN TYPE A - SEE DETAIL 14/A-101. COORDINATE ROOM NAME AND NUMBER WITH VA.
- A15 RELOCATED EXISTING SIGN.
- A16 GRAB BAR GB-3 PROVIDED AND INSTALLED BY CONTRACTOR; REMOVE GWB AS REQUIRED AND PROVIDE 2x WOOD BLOCKING WITHIN WALL. PATCH GWB TO BE FLUSH WITH ADJACENT WALL SURFACE.
- A17 MIRROR M-1 PROVIDED AND INSTALLED BY CONTRACTOR.
- A18 REPLACE ACCESS FLOOR PANELS TO MATCH EXISTING AT REMOVED WALL.
- A19 REPLACE ACCESS FLOOR PANELS TO MATCH EXISTING AT REMOVED HVAC UNIT.
- A20 PROVIDE BLOCKING IN WALL FOR X-RAY EQUIPMENT BY OTHERS; SEE DETAIL 15/A-101.
- A21 PROVIDE BLOCKING IN WALL FOR X-RAY EQUIPMENT BY OTHERS; SEE DETAIL 16/A-101.
- A22 NEW CONCRETE SLAB - SEE DETAILS SHEET A-401.

FLOOR PLAN GENERAL NOTES

1. CONTRACTOR TO PROVIDE AND INSTALL ROOM PLACARD FOR ALL X-RAY ROOMS WITH SHIELDING INFORMATION TO MATCH EXISTING PLACARDS.
2. DO NOT DISTURB INTEGRITY OF EXISTING LEAD-LINED WALLS TO REMAIN (TYP).



1 ENLARGED FLOOR PLAN
SCALE: 1/4" = 1'-0"
N



BUILDING 5 KEYPLAN

**FINAL CONSTRUCTION DOCUMENTS
FULLY SPRINKLERED**

Revisions	Date

CONSULTANTS:

Kenneth Hahn Architects

FARRIS ENGINEERING
OMAHA | LINCOLN | DES MOINES | COLORADO SPRINGS
farris-usa.com

Farris Engineering logo

FEI #164008
This document and the information contained may not be reproduced or excerpted from without the express written permission of Farris Engineering, Inc. Unauthorized copying, disclosure or construction use are prohibited by the copyright law.

ARCHITECT/ENGINEERS:

21Delta Engineers

21 Delta Engineers, LLC
14216 Dayton Cir - Suite #5
Omaha, Nebraska 68137-5566
PH: (402) 496-4115
Fax: (402) 384-8900

Drawing Title
FLOOR PLAN - BUILDING 5

Approved Project Director

Project Title CT SCANNER SITE PREP DESIGN			Project Number 438-15-100		
			Building Number 5		
Location SIOUX FALLS, SD VAMC			Drawing Number A-102		
Date JANUARY 20, 2017	Checked KJH	Drawn DJK	Dwg. 7 of 37		

Office of Construction and Facilities Management

Department of Veterans Affairs

NO.	DESCRIPTION	FLOOR	BASE	NORTH WALL		EAST WALL		SOUTH WALL		WEST WALL		CEILING		NOTES
				MAT.	FIN.	MAT.	FIN.	MAT.	FIN.	MAT.	FIN.	MAT.	FIN.	
C08	CORRIDOR	E-QT	E-QT	--	--	E	E	--	--	E	E	E-AT	--	NOTE 1 2, 3
108	ADJUDICATION DIVISION	E-CPT	RB-1	E	E	GWB	P-1	E	E	--	--	E-AT	--	NOTE 1 4
109	RECEPTION	CPT-1	RB-1	GWB	P-1	GWB	P-1	GWB	P-1	GWB	P-1	E-AT	--	NOTE 1 --
109A	OFFICE	CPT-1	RB-1	GWB	P-1	GWB	P-1	GWB	P-1	GWB	P-1	E-AT	--	NOTE 1 --
109B	OFFICE	CPT-1	RB-1	GWB	P-1	GWB	P-1	GWB	P-1	GWB	P-1	E-AT	--	NOTE 1 --
109C	OFFICE	CPT-1	RB-1	GWB	P-1	GWB	P-1	GWB	P-1	GWB	P-1	E-AT	--	NOTE 1 --
110	WAITING	CPT-1	RB-1	GWB	P-1	GWB	P-1	GWB	P-1	GWB	P-1	E-AT	--	NOTE 1 --
110A	RECEPTION	CPT-1	RB-1	GWB	P-1	GWB	P-1	GWB	P-1	GWB	P-1	E-AT	--	NOTE 1 --
110B	OFFICE	CPT-1	RB-1	GWB	P-1	GWB	P-1	GWB	P-1	GWB	P-1	E-AT	--	NOTE 1 --
110C	OFFICE	CPT-1	RB-1	GWB	P-1	GWB	P-1	GWB	P-1	GWB	P-1	E-AT	--	NOTE 1 --
110D	JOB LAB	CPT-1	RB-1	GWB	P-1	GWB	P-1	GWB	P-1	GWB	P-1	E-AT	--	NOTE 1 --
C03	CORRIDOR	E-PT	E-RB	--	--	GWB	EC-1	--	--	--	--	E-AT	--	NOTE 1 5, 6
C05	CORRIDOR	E-RSF	E-RB	GWB	EC-1	GWB	EC-1	GWB	EC-1	GWB	EC-1	E-AT	--	NOTE 1 --
C05A	CORRIDOR	E-RSF	E-RB	GWB	EC-1	GWB	EC-1	GWB	EC-1	GWB	EC-1	E-AT	--	NOTE 1 7
C06	CORRIDOR	E-RSF	E-RB	--	--	GWB	EC-1	--	--	GWB	EC-1	E-AT	--	NOTE 1 7
A19	DRESSING	E-VTC	E-RB	GWB	EC-1	GWB	EC-1	GWB	EC-1	GWB	EC-1	E-AT	--	NOTE 1 --
A20	XRAY	--	--	--	--	--	--	--	--	--	--	--	--	8
A21	XRAY	--	--	--	--	--	--	--	--	--	--	--	--	8
A22	DRESSING	--	--	--	--	--	--	--	--	--	--	--	--	8
A23	TOILET	--	--	--	--	--	--	--	--	--	--	--	--	8
A24	XRAY	RSF-1	RB-1	GWB	EC-1	GWB	EC-1	GWB	EC-1	GWB	EC-1	AT-1	--	NOTE 1 --
A25	TOILET	FT-1	CT-1	GWB	CT-1/EC-1	GWB	CT-1/EC-1	GWB	CT-1/EC-1	GWB	CT-1/EC-1	AT-1	--	NOTE 1 9
A26	JANITOR	--	--	--	--	--	--	--	--	--	--	--	--	8
A27	STORAGE	RSF-1	RB-1	GWB	EC-1	GWB	EC-1	GWB	EC-1	GWB	EC-1	AT-1	--	NOTE 1 --
A37	CT	RSF-1	RB-1	GWB	EC-1	GWB	EC-1	GWB	EC-1	GWB	EC-1	AT-1	--	NOTE 1 --
A40	XRAY	RSF-1	RB-1	GWB	EC-1	GWB	EC-1	GWB	EC-1	GWB	EC-1	AT-1	--	NOTE 1 --
A43	TOILET	--	--	--	--	--	--	--	--	--	--	--	--	8
A86	CONTROL	--	--	GWB	--	GWB	--	GWB	--	GWB	EC-1	AT-1	--	NOTE 1 10

NOTE: ALL OTHER ROOMS SHOWN ON FLOOR PLAN BUT NOT LISTED ON THIS SCHEDULE ARE EXISTING TO REMAIN.

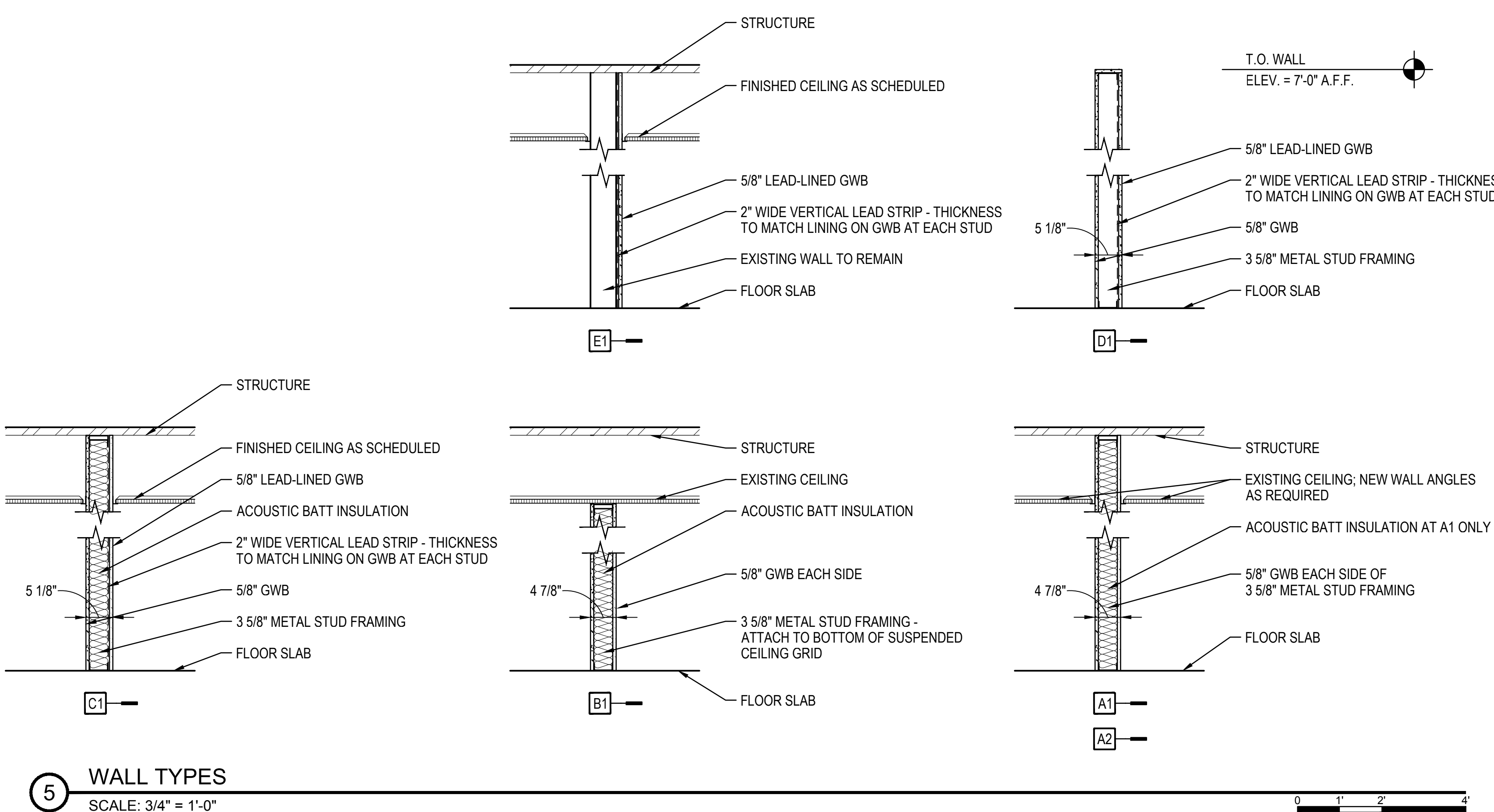
ROOM FINISH SCHEDULE LEGEND

NOTE: REFER TO SCHEDULE OF FINISHES FOR ALL INTERIOR FINISHES

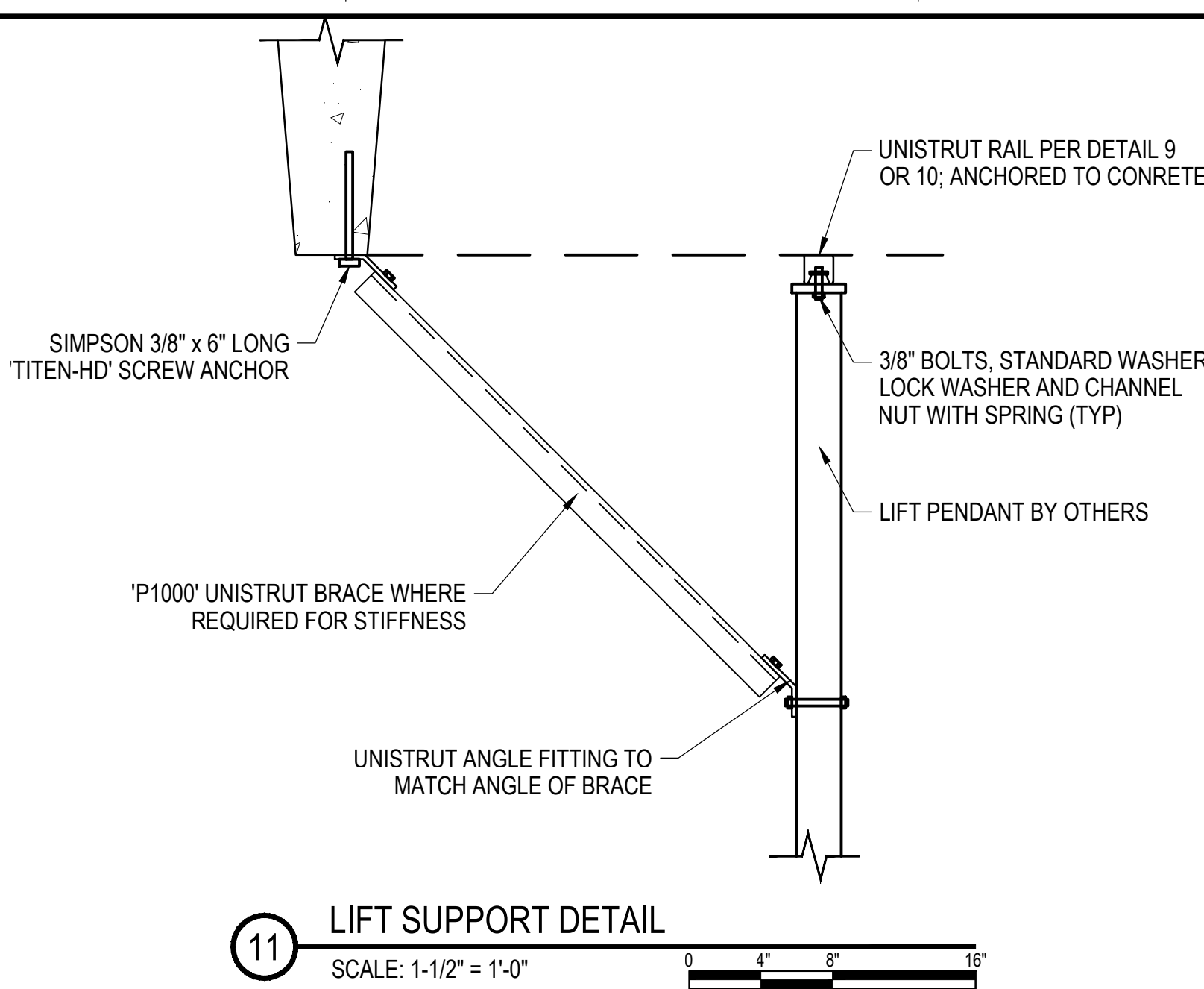
AT	ACOUSTICAL CEILING	P	PAINT
CPT	CARPET MODULE TILE	PT	PORCELAIN TILE
CT	CERAMIC TILE	QT	QUARRY TILE
EC	EPOXY COATING	RB	RUBBER BASE
E	EXISTING	ST	STAIN
FT	FLOOR TILE, MOSAIC	RSF	RESILIENT SHEET FLOORING
GWB	GYPSUM WALLBOARD	WD	WOOD
		VCT	VINYL COMPOSITION TILE

ROOM FINISH SCHEDULE NOTES

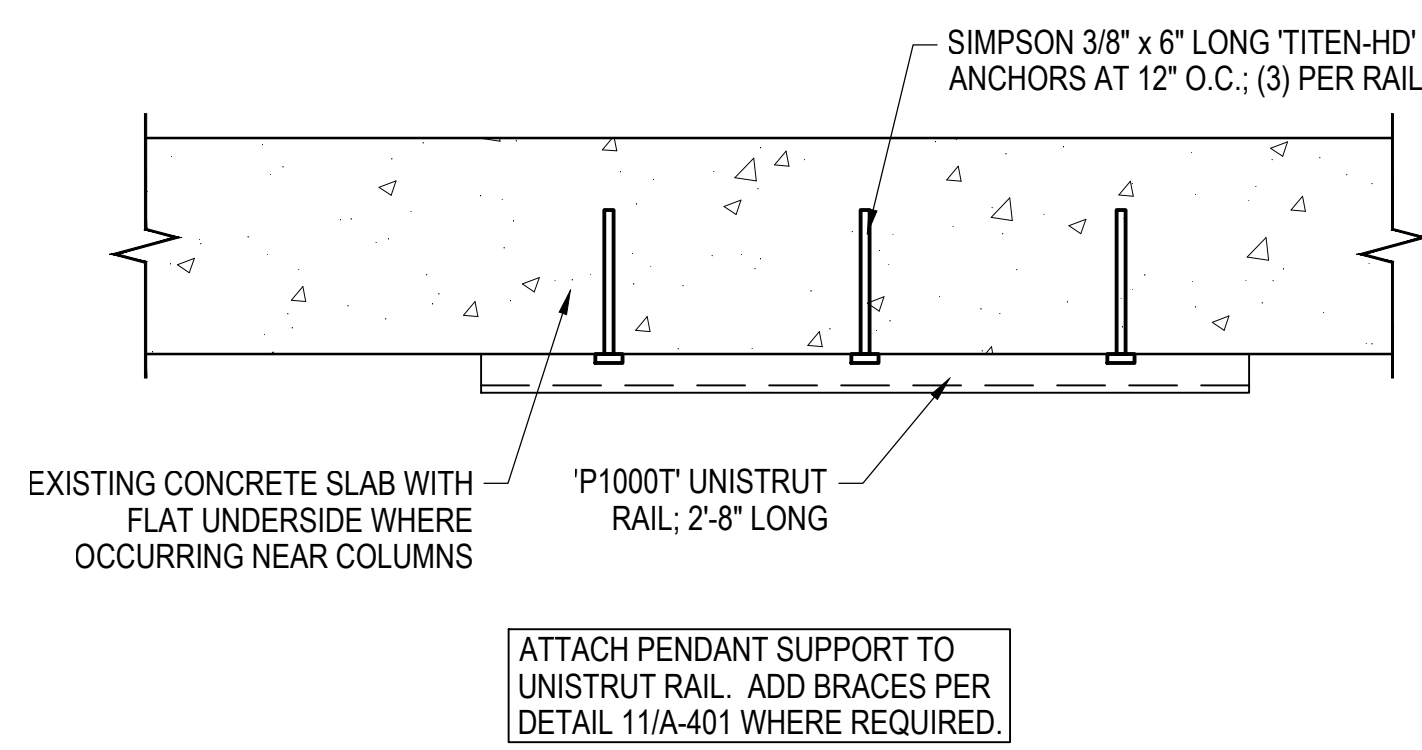
- FIELD VERIFY AND MATCH EXISTING CEILING HEIGHT.
- PATCH EXISTING QUARRY TILE FLOOR AND BASE TO MATCH EXISTING AT NEW DOOR LOCATIONS.
- PROTECT EXISTING VINYL WALLCOVERING TO REMAIN AT NEW DOOR LOCATIONS.
- PROVIDE RESILIENT BASE AT NEW WALL.
- PATCH EXISTING PORCELAIN TILE FLOOR AND RESILIENT BASE TO MATCH EXISTING AT INFILLED DOOR LOCATION.
- PAINT NEW GYPSUM BOARD AT INFILLED DOOR LOCATION TO MATCH ADJACENT WALL.
- PATCH EXISTING RESILIENT SHEET VINYL FLOOR AND RESILIENT BASE TO MATCH EXISTING AT INFILLED DOOR LOCATIONS.
- NO WORK.
- PROVIDE CERAMIC TILE WAINSCOT TO 48" AFF.
- PAINT PATCHED WALLS TO MATCH ADJACENT EXISTING.



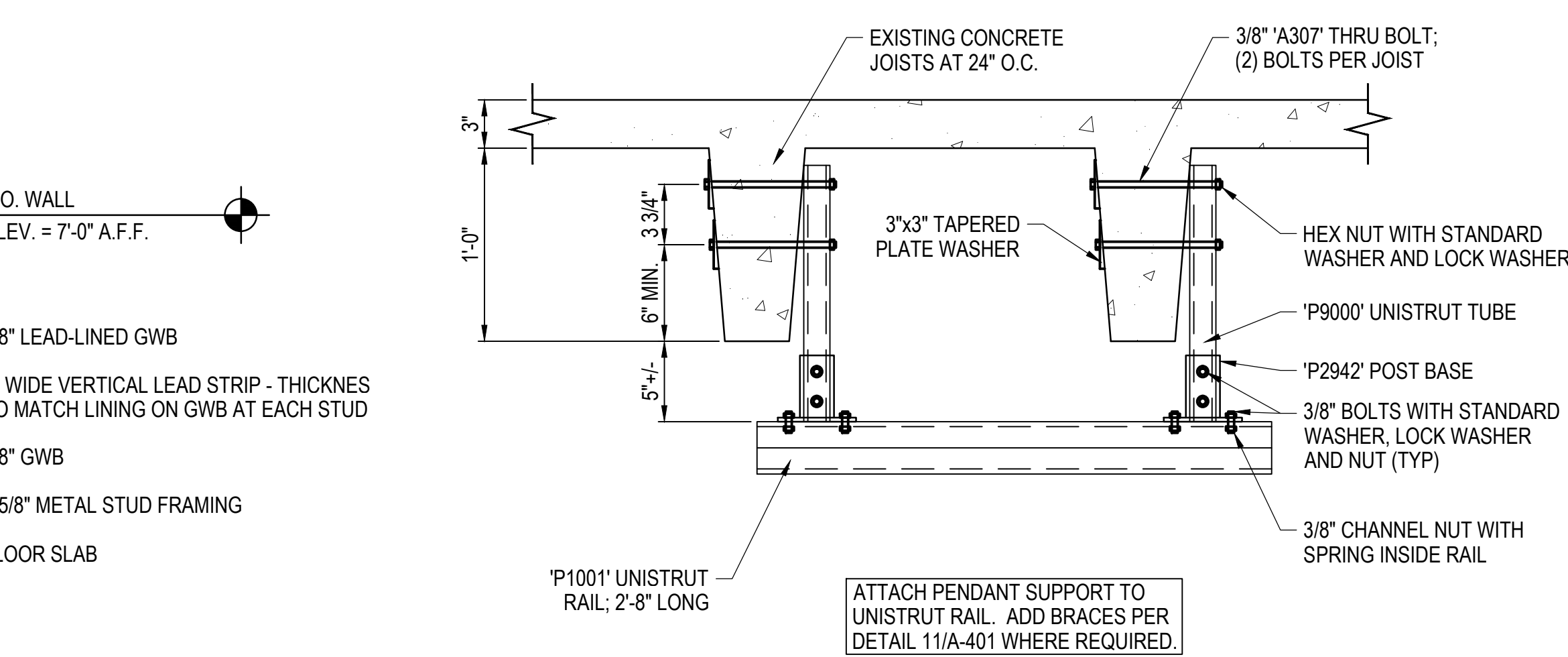
5 WALL TYPES
SCALE: 3/4" = 1'-0"



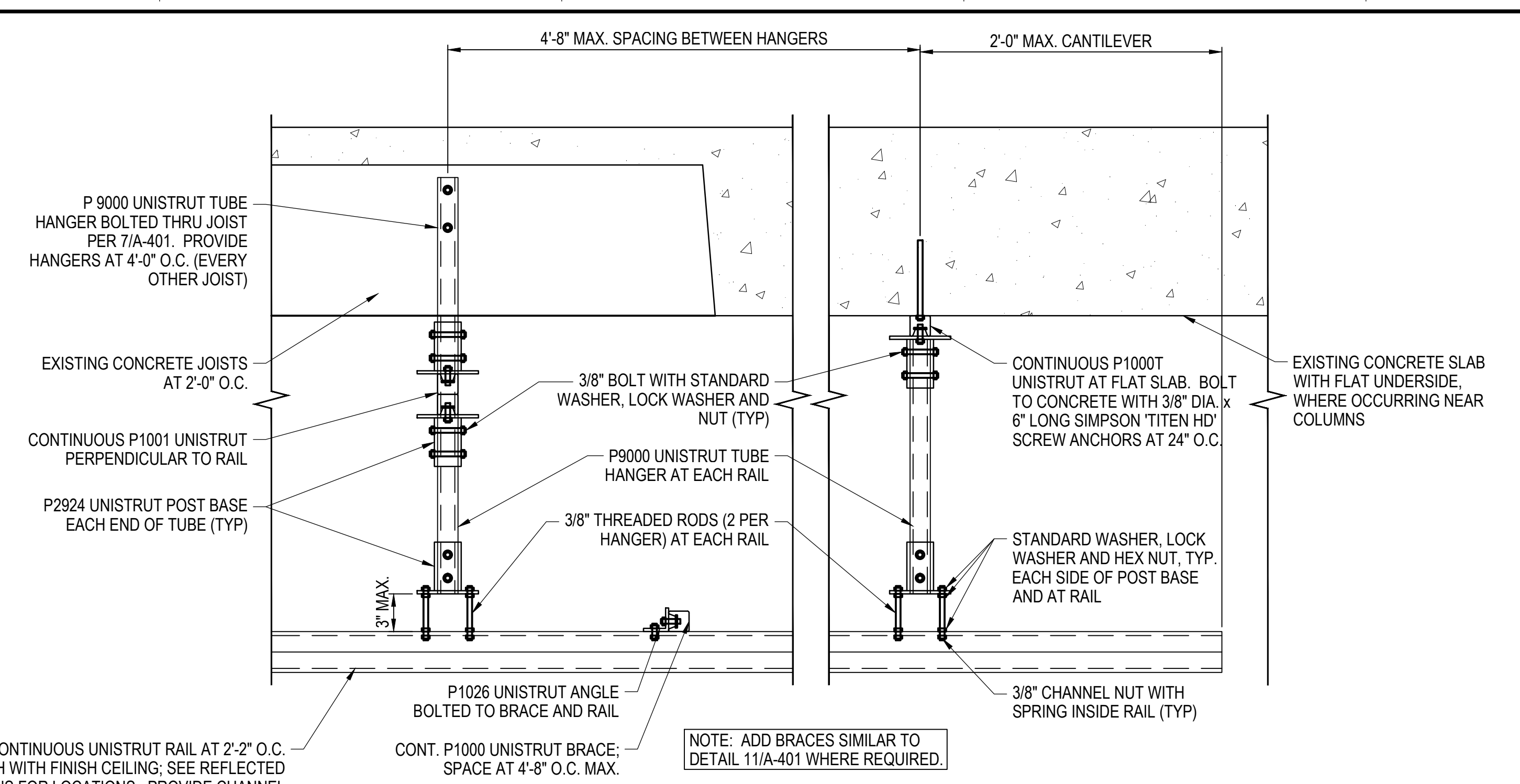
11 LIFT SUPPORT DETAIL
SCALE: 1-1/2" = 1'-0"



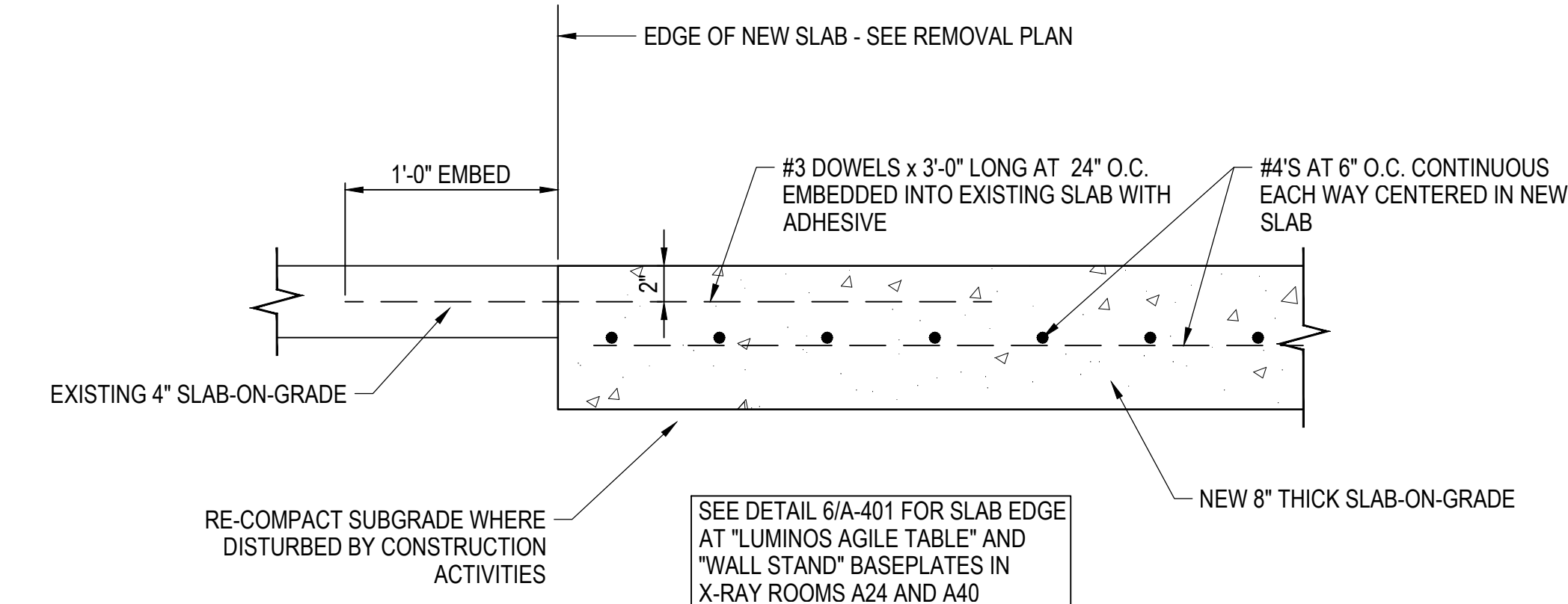
9 LIFT SUPPORT DETAIL
SCALE: 1-1/2" = 1'-0"



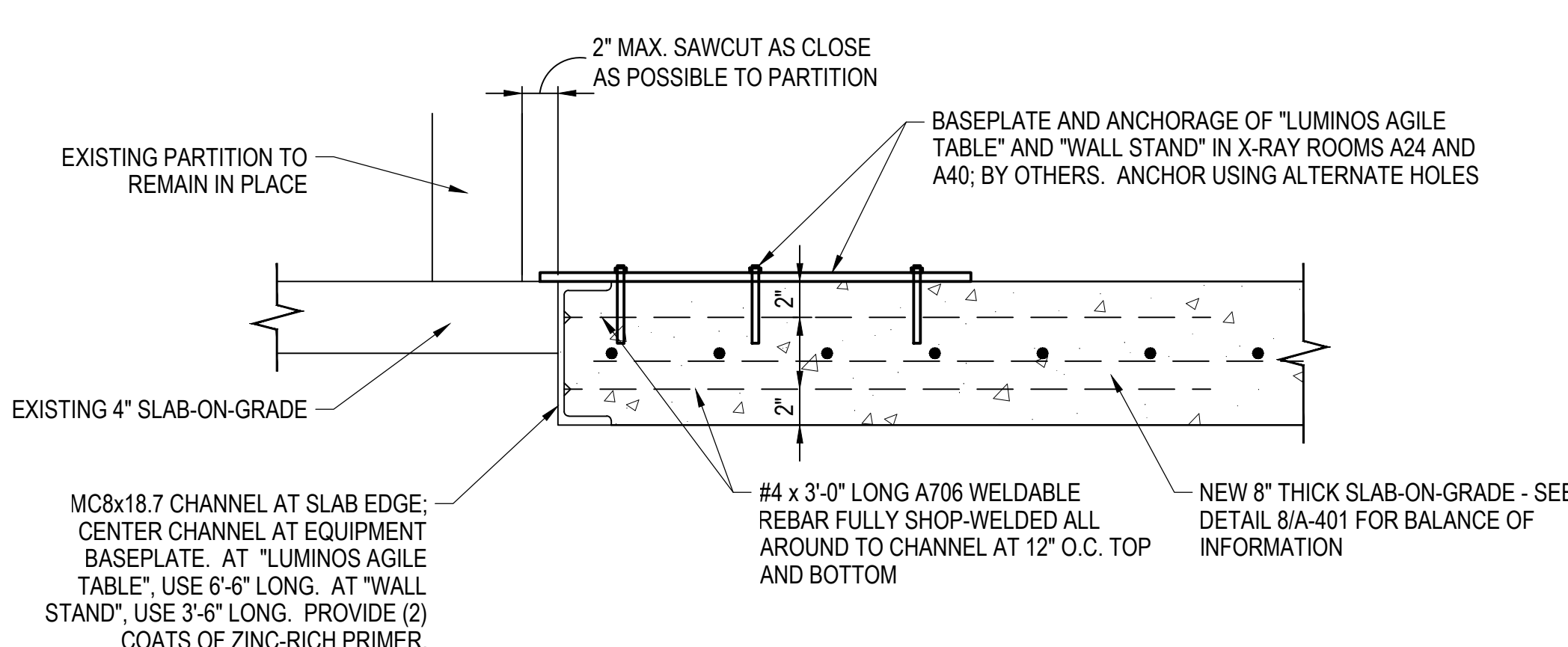
7 LIFT SUPPORT DETAIL
SCALE: 1-1/2" = 1'-0"



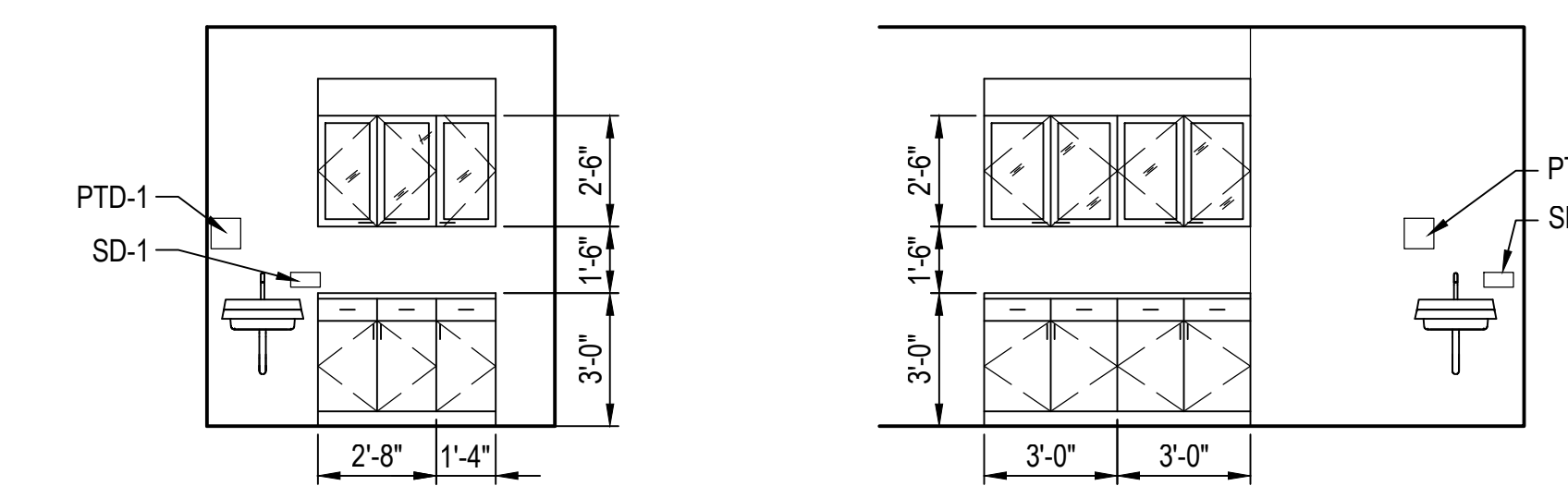
10 UNISTRUT RAILS AT CEILING IN X-RAY ROOMS
SCALE: 1-1/2" = 1'-0"



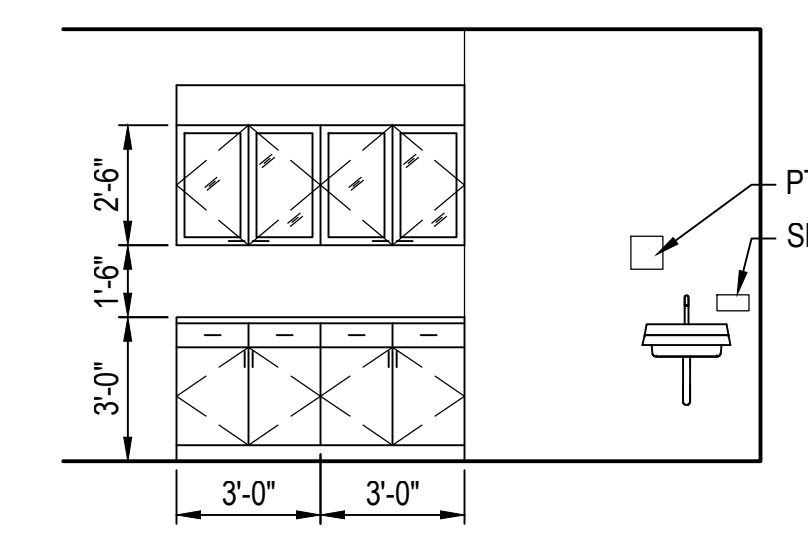
8 TYP NEW SLAB EDGE DETAIL
SCALE: 1-1/2" = 1'-0"



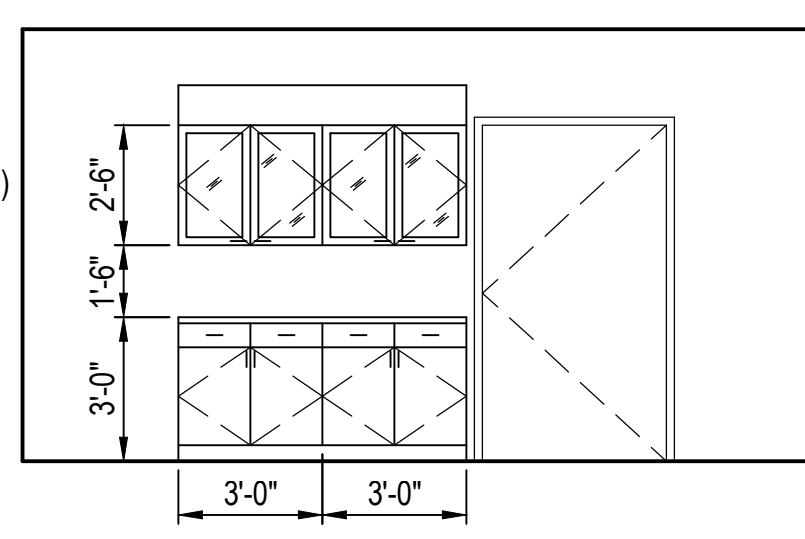
6 CHANNEL AT SLAB EDGE IN X-RAY
SCALE: 1-1/2" = 1'-0"



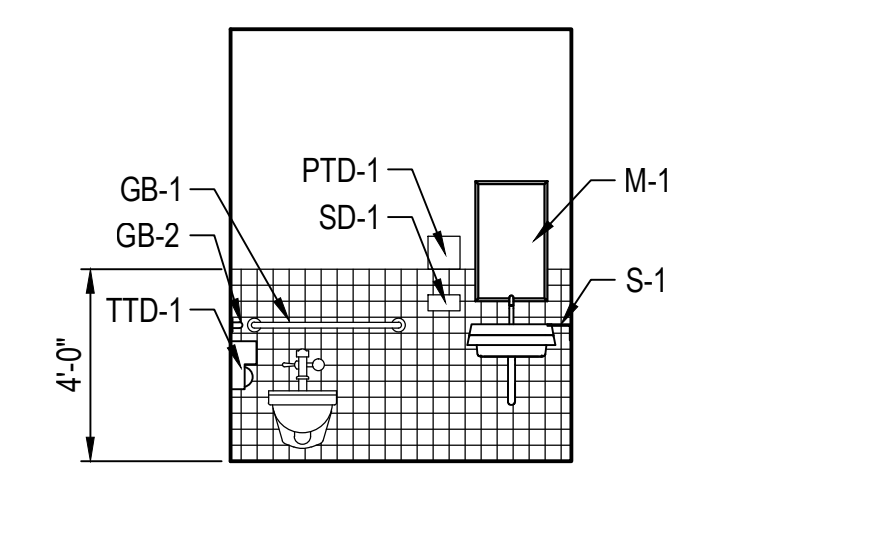
4 INTERIOR ELEVATION
SCALE: 1/4" = 1'-0"



3 INTERIOR ELEVATION
SCALE: 1/4" = 1'-0"



2 INTERIOR ELEVATION
SCALE: 1/4" = 1'-0"



1 INTERIOR ELEVATION
SCALE: 1/4" = 1'-0"

**FINAL CONSTRUCTION DOCUMENTS
FULLY SPRINKLERED**

CONSULTANTS: Kenneth Hahn Architects FARRIS ENGINEERING <small>OMAHA LINCOLN DES MOINES COLORADO SPRINGS</small> <small>FEI #164008</small> <small>Copyright and the information contained may not be reproduced or excerpted from without the express written permission of Farris Engineering, Inc. Unauthorized copying, disclosure or construction use are prohibited by the copyright law.</small>		ARCHITECT/ENGINEERS: 21 Delta Engineers 21 Delta Engineers, LLC 14216 Dayton Cir - Suite #5 Omaha, Nebraska 68137-5566 PH: (402) 496-4115 Fax: (402) 384-8900		Drawing Title: ROOM FINISH SCHEDULE, WALL TYPES, AND DETAILS Project Title: CT SCANNER SITE PREP DESIGN Project Number: 438-15-100 Building Number: 5 AND 38 Location: SIOUX FALLS, SD VAMC Date: JANUARY 20, 2017 Checked: KJH Drawn: DJK Dwg. # of 37		Office of Construction and Facilities Management Department of Veterans Affairs	
---	--	--	--	---	--	---	--