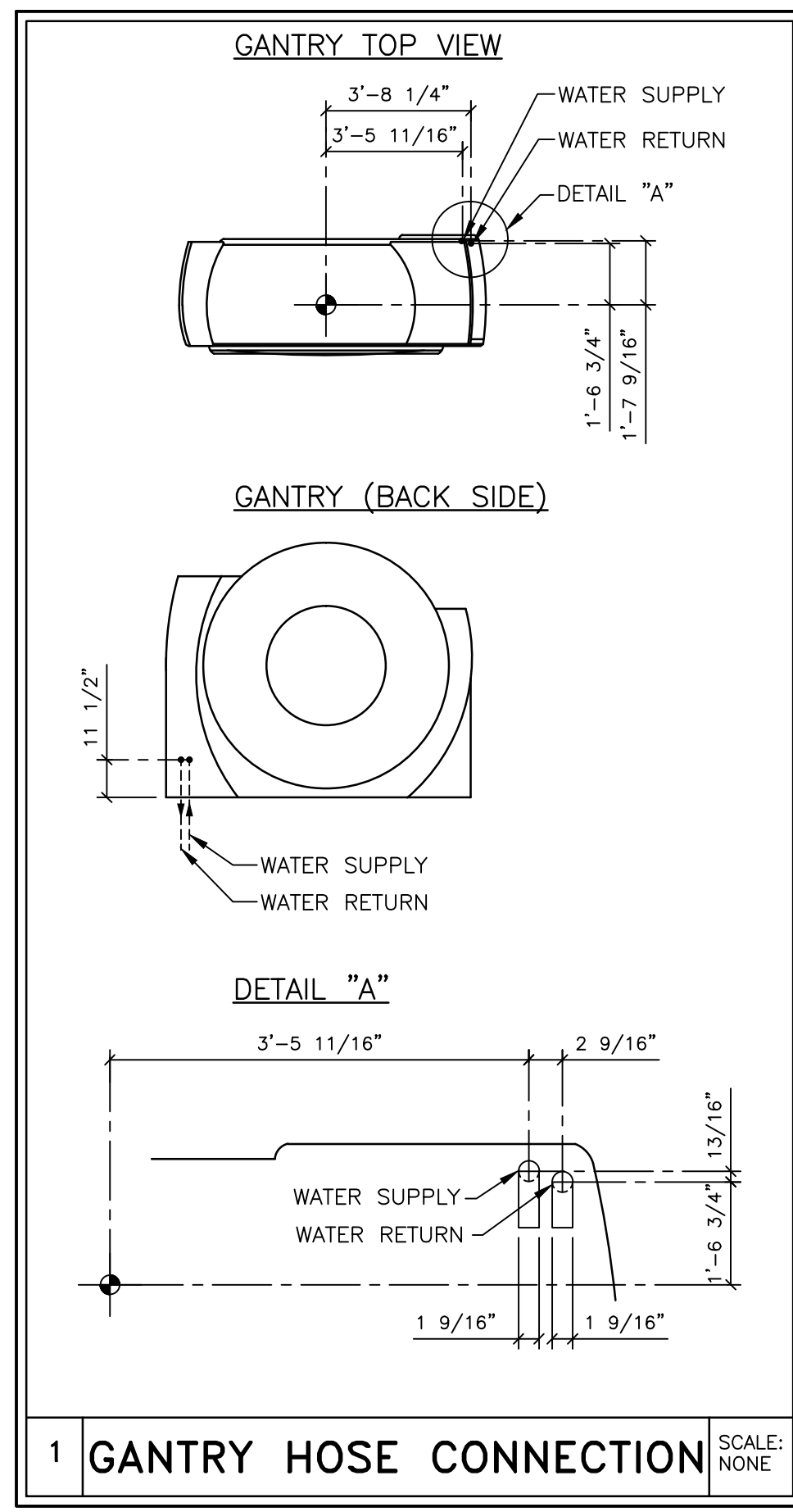
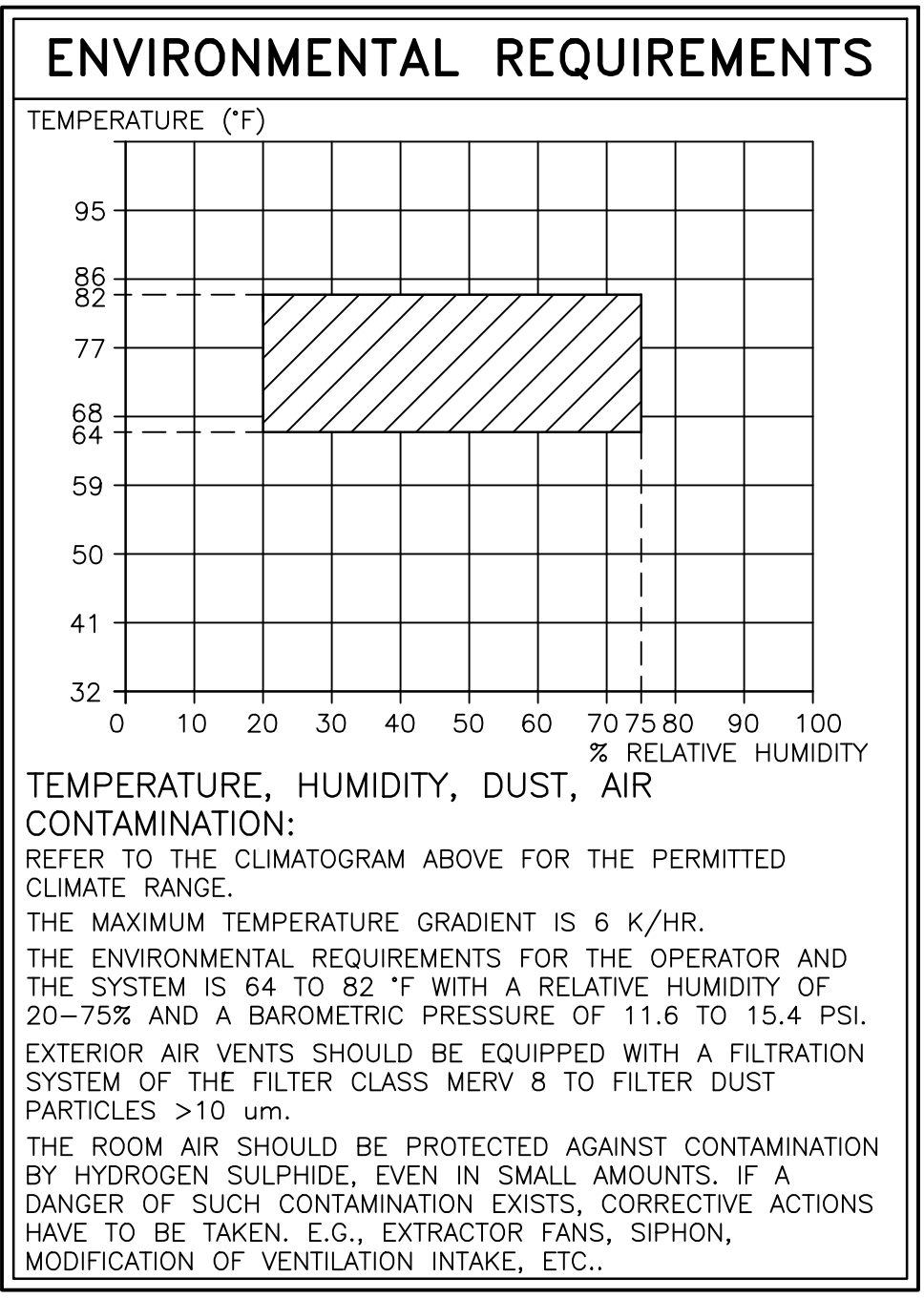


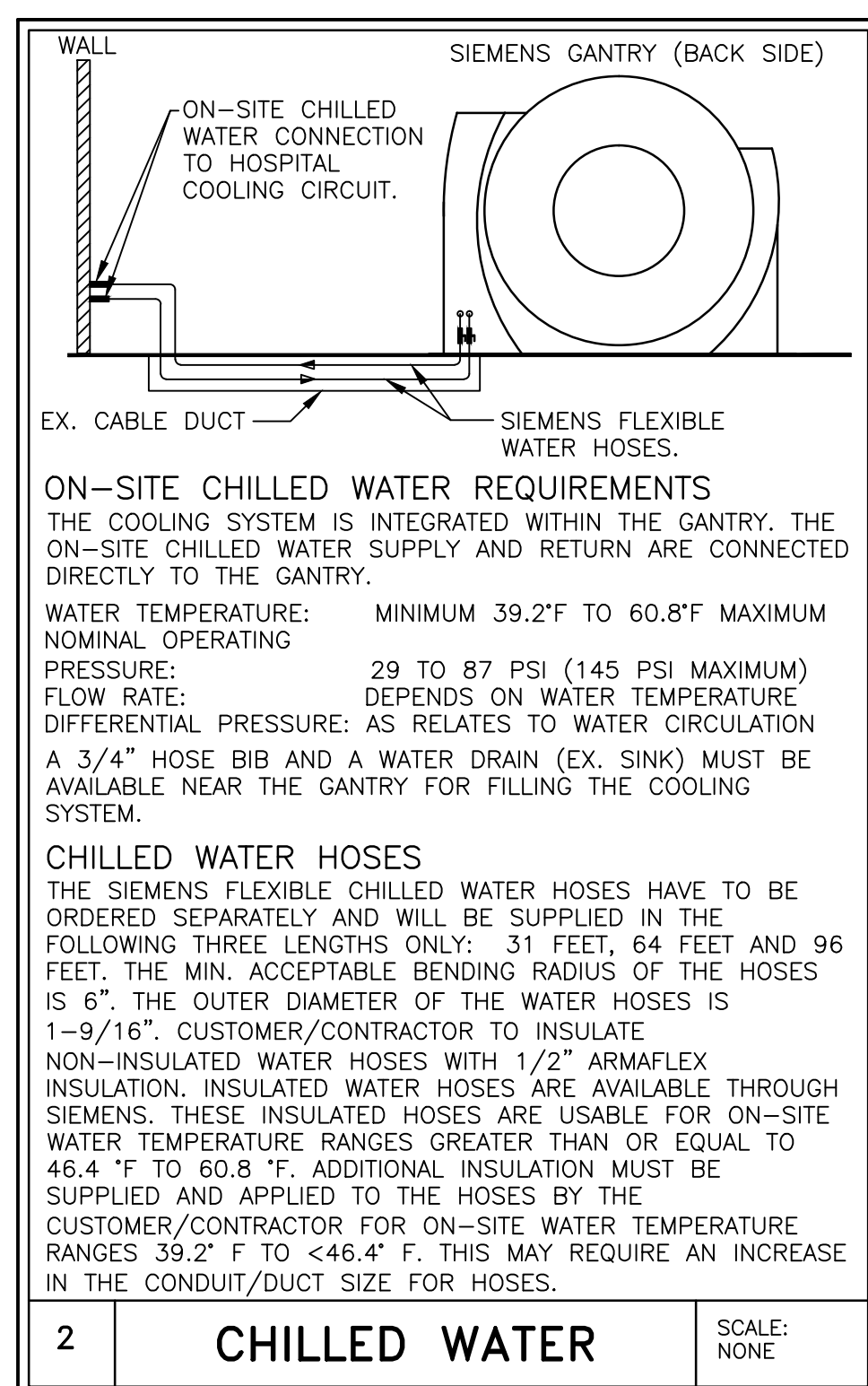
MECHANICAL PLAN

SCALE: 1/4" = 1'-0"

TECHNICAL DATA	
WATER SUPPLY RATE	SEE WATER FLOW RATE DIAGRAM
TEMPERATURE RANGE OF WATER	MINIMUM 39.2°F TO 60.8°F MAXIMUM
TEMPERATURE GRADIENT OF WATER	MAXIMUM 1 K/MINUTE
BTU DISCHARGE TO THE WATER	40,946 BTU/HR
NOMINAL OPERATING PRESSURE	29 TO 87 PSI (145 PSI MAXIMUM) (1)
FILTRATION	200 MICRONS
DIFFERENTIAL PRESSURE	SEE DIFFERENTIAL PRESSURE DIAGRAM
WATER QUALITY	
THE WATER MUST BE OF DRINKABLE QUALITY. IF THE WATER IS OF LESSER QUALITY A FILTER WITH A MESH OF 200 MICRONS IS REQUIRED IN THE ON-SITE INLET.	
ANTIFREEZE	
AN ANTIFREEZE AGENT MAY BE ADDED, BY THE TECHNICIAN WHO WILL START THE SYSTEM, TO THE ON-SITE CIRCUIT TO PROVIDE PROTECTION FOR TEMPERATURES TO -33°F WITH A MIXTURE OF 40% ANTIFREEZE. TO COMPENSATE FOR THE RESULTING REDUCTION IN COOLING CAPACITY, THE WATER FLOW RATE WILL HAVE TO BE INCREASED. WATER WITH ANTIFREEZE FROM THE ON-SITE CHILLED WATER MUST BE BETWEEN 39.2°F AND 57.2°F. ONLY WATER AT THIS TEMPERATURE MAY FLOW THROUGH THE WATER/WATER COOLING SYSTEM. ANTIFREEZE TO BE SUPPLIED BY THE CUSTOMER/CONTRACTOR. CHILLER MANUFACTURER'S SPECIFICATIONS MAY DIFFER, VERIFY WITH SIEMENS PROJECT MANAGER.	
1) TO GUARANTEE THE LIMIT OF THE MAXIMUM WATER PRESSURE OF 145 PSI, THE ON-SITE COOLING WATER SYSTEM MUST PROVIDE A SUITABLE SAFETY DEVICE, EX. PRESSURE RELIEF VALVE.	

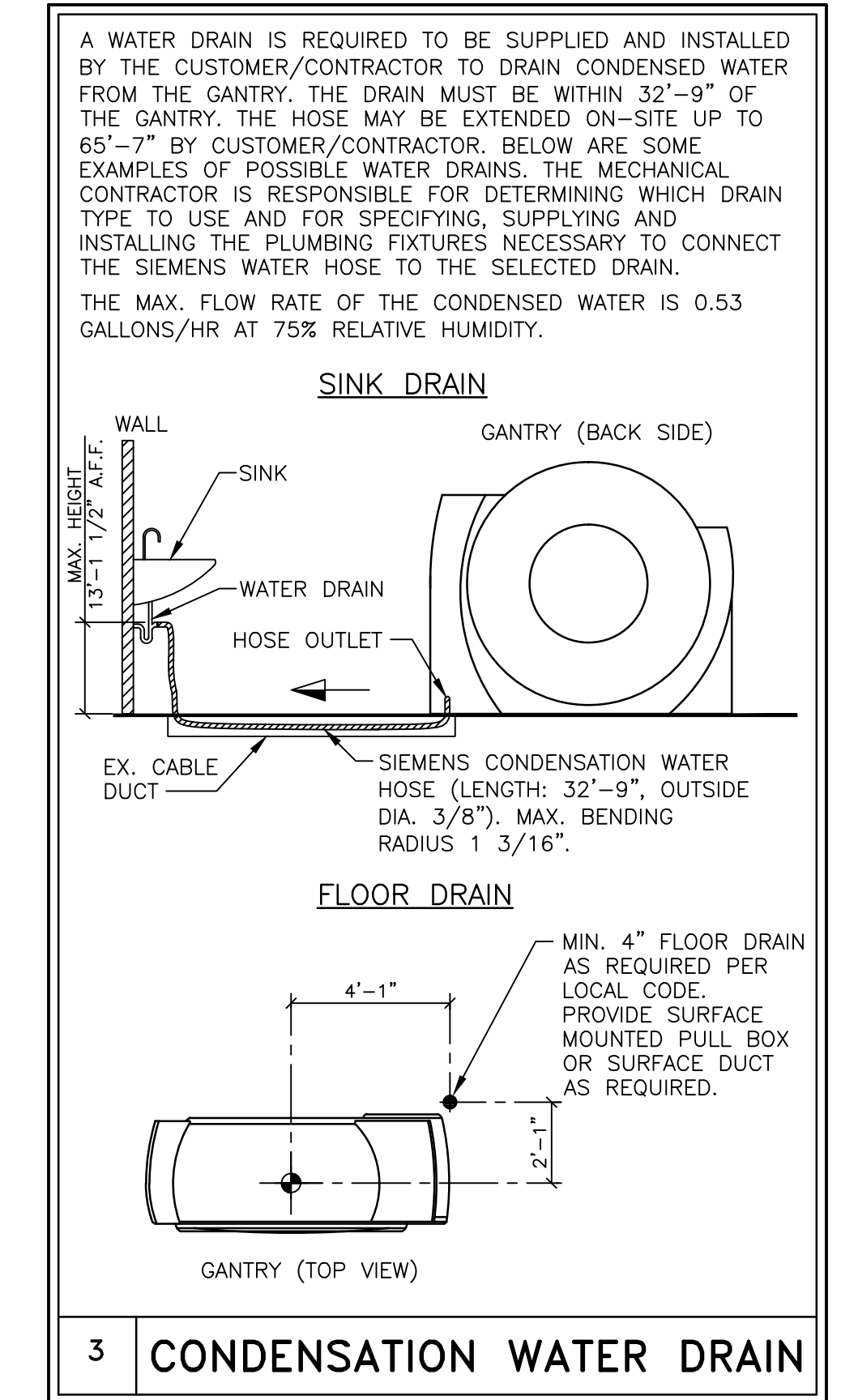
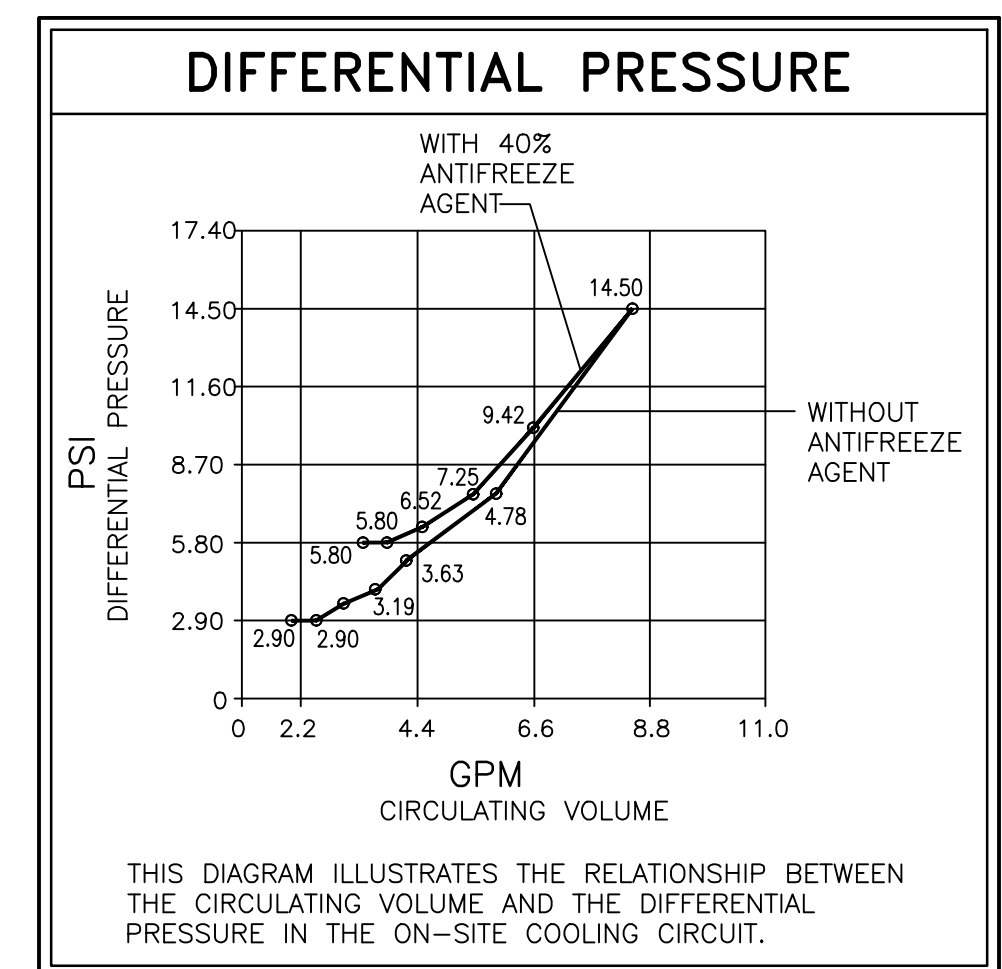
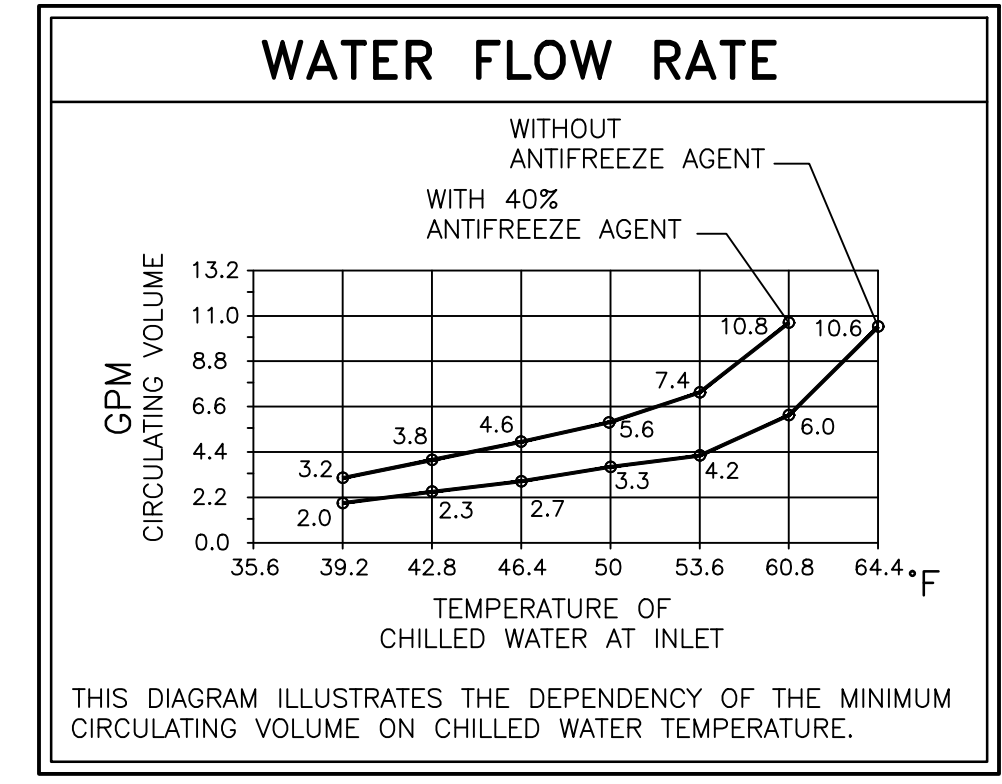
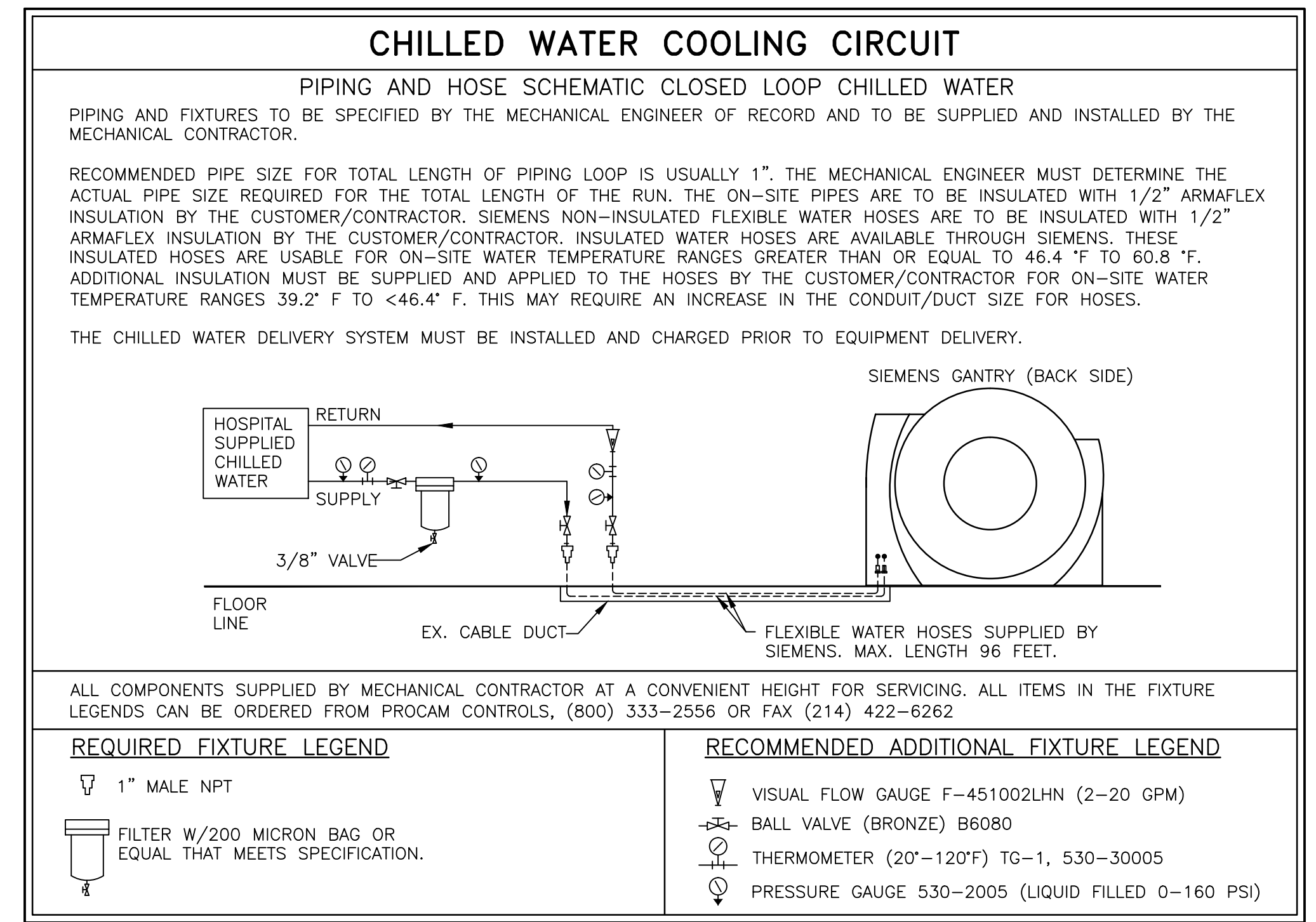


1 GANTRY HOSE CONNECTION SCALE: NONE



2 CHILLED WATER SCALE: NONE

FINISHED ROOM HEIGHT	
FOR CT GANTRY ONLY	MINIMUM 7'-6 9/16"
CAREVISION MONITOR/CEILING MOUNT	MIN. 8'-6 3/8" MAX. 12'-1 11/16"



3 CONDENSATION WATER DRAIN

FOR INFO ONLY

ATTENTION:

- THIS DRAWING IS DESIGNED TO CONFORM TO FEATURES AND EQUIPMENT REQUIREMENTS PRESENTED AT THE TIME OF THEIR PREPARATION.
- MODIFICATION, THEY ARE NOT TO BE USED FOR CONSTRUCTION PURPOSES.
- THIS SET OF PLANS REPRESENTS A COMPLETE SET OF DETAILS AND SHOULD NOT BE SEPARATED.

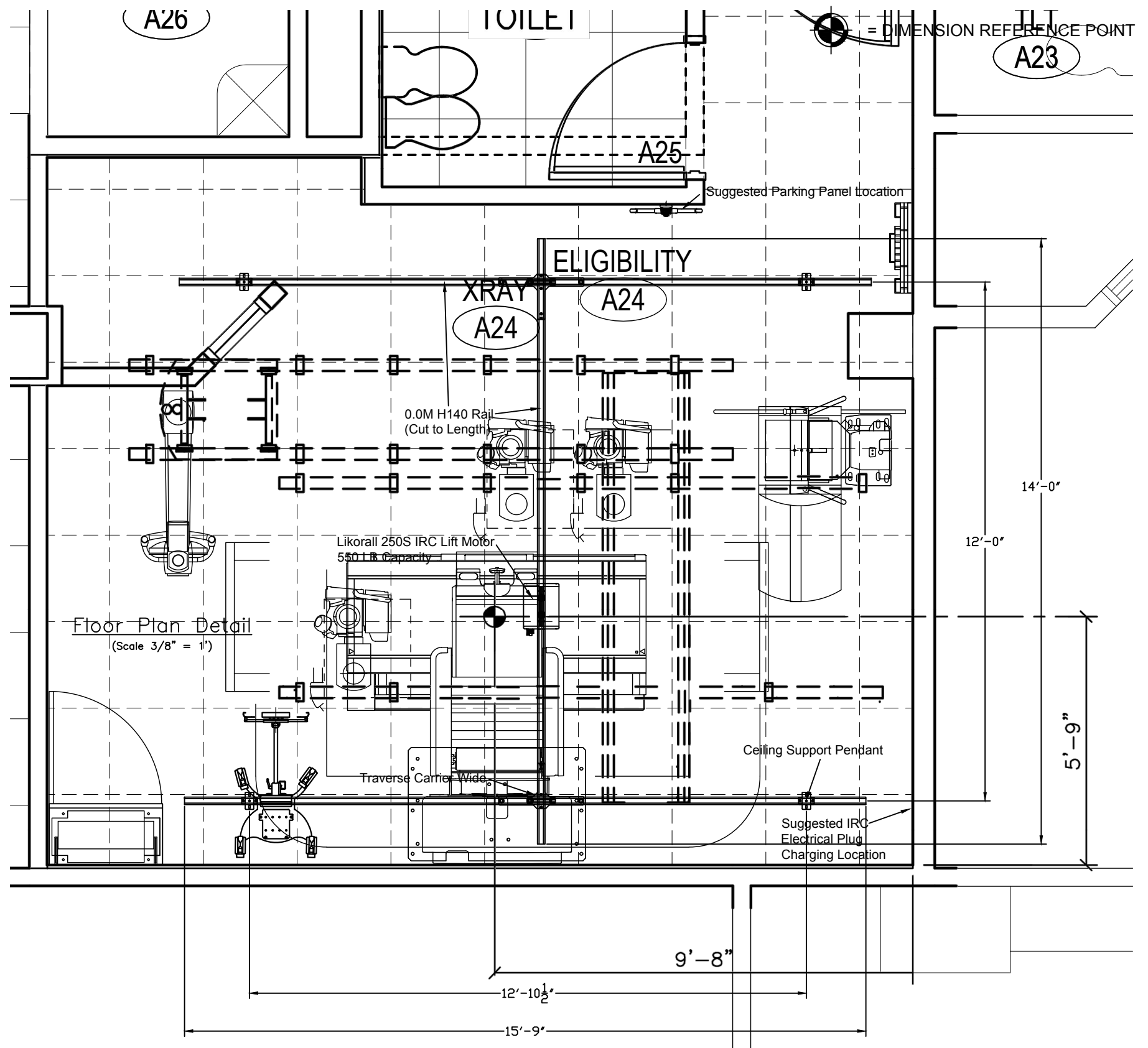
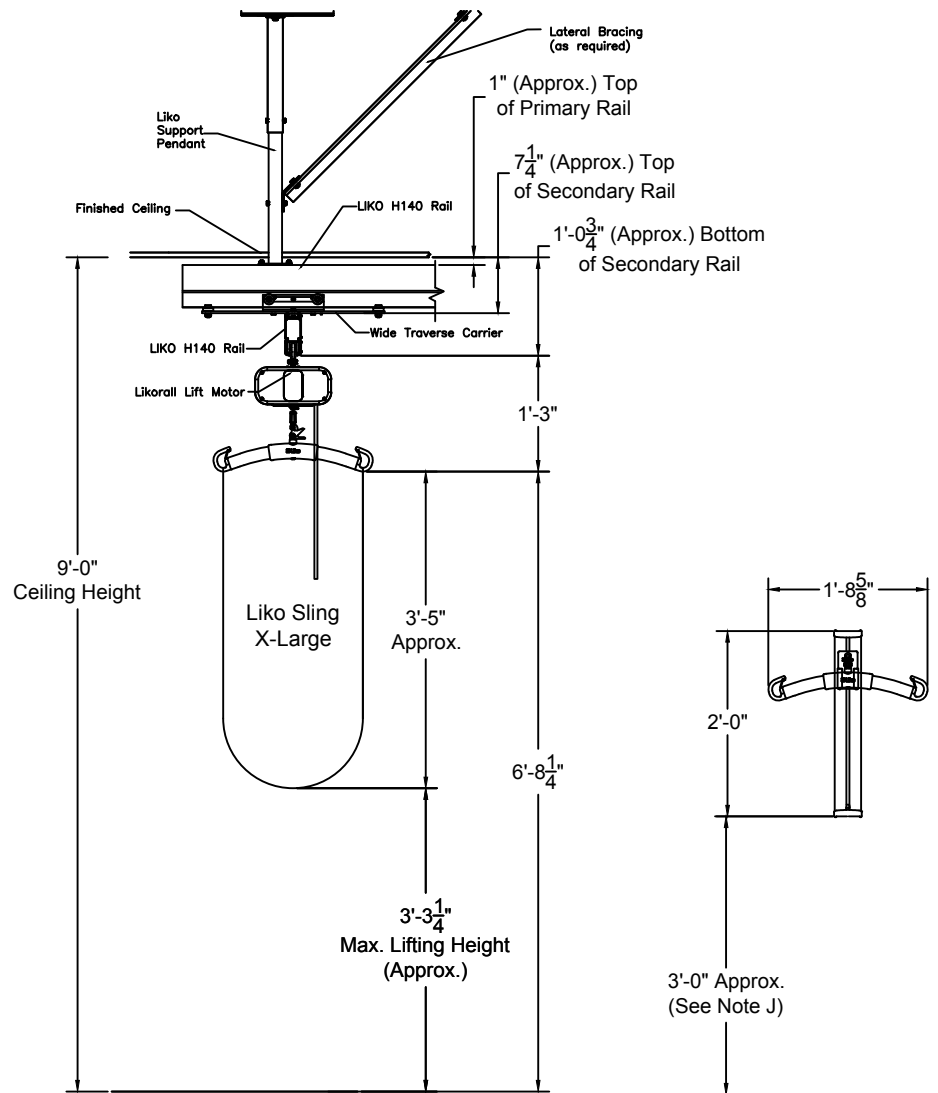
- IT IS RECOMMENDED THAT THE SIEMENS DRAWINGS BE INCORPORATED WITH THE CONSTRUCTION DOCUMENTS FOR REFERENCE.

- ALL DIMENSIONS SHOWN ON THIS DRAWING ARE FROM FINISHED SURFACES.
- THIS DRAWING DOES NOT PROVIDE RADIATION SHIELDING REQUIREMENTS FOR X-RAY AND ASSOCIATED EQUIPMENT. THE CUSTOMER IS RESPONSIBLE FOR CONSULTING WITH A REGISTERED RADIATION PHYSICIST TO SPECIFY RADIATION PROTECTION.

PROJECT MANAGER: JIM WITHROW TEL: (402) 960-7654 FAX: (402) 502-3001 EMAIL: JWITHROW@CASSELLING.COM		SIEMENS	
		SIoux FALLS VAMC	
		2501 W 22ND ST, SIOUX FALLS, SD 57117 CT SCAN ROOM - SOMATOM DEFINITION AS 64	
PROJECT #: 1603123		SHEET: M-101	
THE USE OR REPRODUCTION OF THIS TITLE BLOCK WITHOUT SIEMENS AUTHORIZATION WILL RESULT IN PROSECUTION UNDER FULL EXTENT OF THE LAW.		DATE: 12/27/16	
ALL RIGHTS ARE RESERVED.		DRAWN BY: J. DRAMIS	
SCALE: AS NOTED		REF. # 30175141	

VERTICAL DIMENSION(S) OF INTERSTITIAL WILL NOT REQUIRE DIAGONAL BRACING IF SUPPORT LENGTH IS EQUAL TO OR LESS THAN 31 1/2".

Note: Method of attachment to building structure to be confirmed.



*SEE NOTES PAGE FOR IMPORTANT INSTALLATION AND COORDINATION DETAILS

FOR INFORMATION ONLY

Version	Revision Description	Date	Initials
1			
2			
3			
4			
5			
6			
7			

	SIOUX FALLS VA HEALTH CARE SYSTEM 2501 W 22ND ST SIOUX FALLS, SD 57117-5046	ROOM NUMBER A24 CEILING MOUNTED TRAVERSE IN-RAIL CHARGING APPLICATION 550 LBS MAX LIFTING CAPACITY	
	DRAWN BY: <i>Stirn</i>	DATE: 11/15/16	SCALE: AS NOTED
THIS DRAWING IS NOT TO BE USED AS A CONSTRUCTION DRAWING, UNLESS NOTED AS SUCH. ACCURACY OF THIS DRAWING IS BASED UPON INFORMATION PROVIDED TO HILL-ROM. OPTIMAL ARRANGEMENT TO BE DETERMINED AT TIME OF INSTALLATION.		PROJECT #	