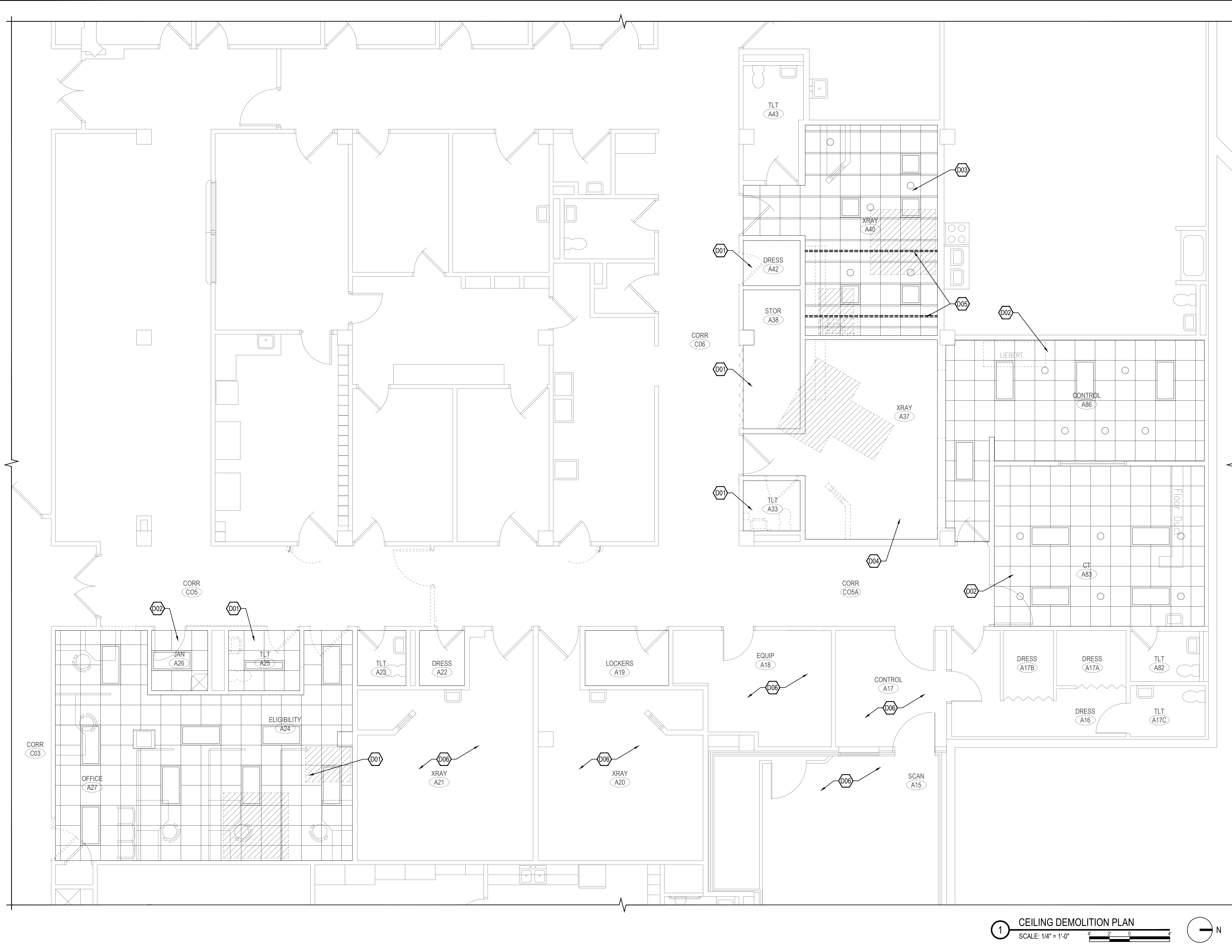


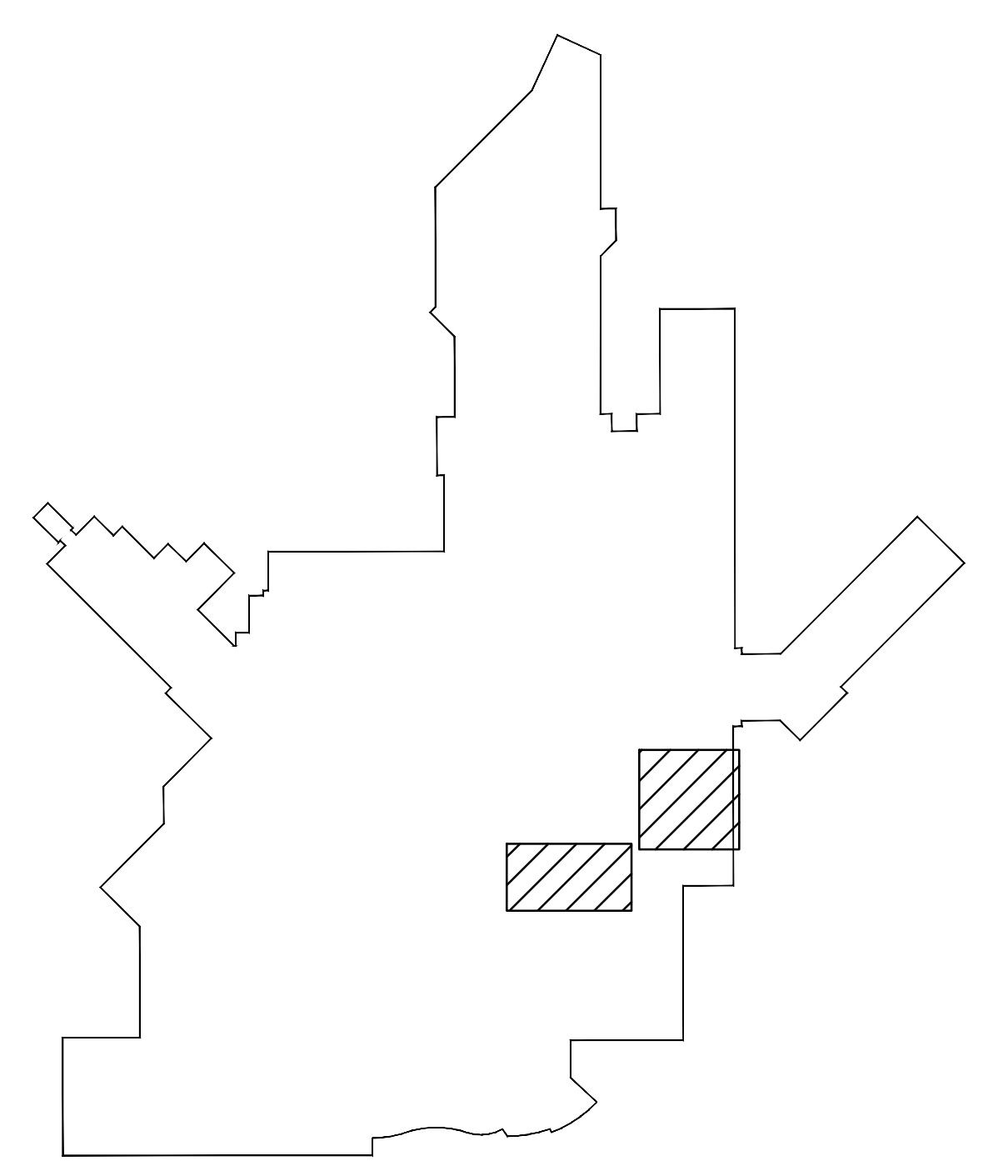
three eighths inch = one foot
one quarter inch = one foot
one eighth inch = one foot
three quarters inch = one foot
one half inch = one foot
one inch = one foot
one and one half inches = one foot
three inches = one foot



DEMOLITION PLAN KEY NOTES

- D01 REMOVE ACOUSTICAL TILE CEILING AND GRID THIS ROOM COMPLETE. COORDINATE WITH MECHANICAL AND ELECTRICAL WORK.
- D02 EXISTING CEILING THIS ROOM TO REMAIN. PATCH CEILING AT REMOVED WALLS AS REQUIRED.
- D03 REMOVE ACOUSTICAL TILE CEILING PADS THIS ROOM COMPLETE. EXISTING GRID AND UNISTRUT TO REMAIN. EXTEND GRID AND UNISTRUT INTO EXPANDED ROOM AREA AS SHOWN ON CEILING PLANS. COORDINATE WITH MECHANICAL AND ELECTRICAL WORK.
- D04 REMOVE ACOUSTICAL TILE CEILING, GRID, AND UNISTRUT THIS ROOM COMPLETE. COORDINATE WITH MECHANICAL AND ELECTRICAL WORK.
- D05 REMOVE CEILING MOUNTED UNISTRUT COMPLETE SHOWN BOLD AND DASHED. COORDINATE WITH MECHANICAL AND ELECTRICAL WORK.
- D06 NO TRADES SHALL INSTALL NEW WORK ACROSS EXISTING X-RAY ROOMS A15, A17, A18, A20 AND A21.

1 CEILING DEMOLITION PLAN
SCALE: 1/4" = 1'-0"
N



BUILDING 5 KEYPLAN
FINAL CONSTRUCTION DOCUMENTS
FULLY SPRINKLERED

Revisions:

Revisions:	Date

CONSULTANTS:
KHA
Kenneth Hahn Architects

FARRIS ENGINEERING
OMAHA | LINCOLN | DES MOINES | COLORADO SPRINGS
farris-usa.com
COPYRIGHT FEI #164008
This document and the information contained may not be reproduced or excerpted from without the express written permission of Farris Engineering, Inc. Unauthorized copying, disclosure or construction use are prohibited by the copyright law.

ARCHITECT/ENGINEERS:

21Delta Engineers

21 Delta Engineers, LLC
14216 Dayton Cir - Suite #5
Omaha, Nebraska 68137-5566
PH: (402) 496-4115
Fax: (402) 384-8900

Drawing Title
CEILING DEMOLITION PLAN - BUILDING 5
Approved Project Director

Project Title
CT SCANNER SITE PREP DESIGN
Location
SIOUX FALLS, SD VAMC
Date
JANUARY 20, 2017

Project Number
438-15-100
Building Number
5
Drawing Number
AD103
Dwg. 5 of 37

Office of Construction and Facilities Management
Department of Veterans Affairs

DOOR AND FRAME SCHEDULE														
NO.	SIZE	DOOR	TYPE	MAT.	TYPE	FRAME	DEPTH	DETAILS	SHEET	DOOR GLASS	KEY TYPE	HDWR SET	FIRE RATING	NOTES
109	SLIDING 8'-0" x 7'-0"	DC	AL	F01	AL	4"	5, 6, 7	A-101	CTG	-	3			
109A	3'-0" x 7'-0" x 1-3/4"	DB	WD	F02	HM	5-3/4"	4	A-101	CTG	-	1			
109B	3'-0" x 7'-0" x 1-3/4"	DB	WD	F02	HM	5-3/4"	4	A-101	CTG	-	1			
109C	3'-0" x 7'-0" x 1-3/4"	DB	WD	F02	HM	5-3/4"	4	A-101	CTG	-	1			
110	3'-0" x 7'-0" x 1-3/4"	DD	WD	F02	HM	5-3/4" F.V.	4	A-101	CTG	-	2			
110B	3'-0" x 7'-0" x 1-3/4"	DB	WD	F02	HM	5-3/4"	4	A-101	CTG	-	1			
110C	3'-0" x 7'-0" x 1-3/4"	DB	WD	F02	HM	5-3/4"	4	A-101	CTG	-	1			
110D	3'-0" x 7'-0" x 1-3/4"	DB	WD	F02	HM	5-3/4"	4	A-101	CTG	-	1			
C05	PR 3'-0" x 7'-0" x 1-3/4"	DA	WD	F02	HM	5-3/4"	4	A-101	CTG	-	8			
A24	3'-8" x 7'-0" x 1-3/4"	DA	WD	F02	HM	5-3/4"	3, 8	A-101	-	-	7			1
A25	3'-0" x 7'-0" x 1-3/4"	DA	WD	F02	HM	5-3/4"	4	A-101	-	-	6			
A27A	3'-0" x 7'-0" x 1-3/4"	DA	WD	F02	HM	5-3/4"	4	A-101	-	-	4			
A27B	3'-0" x 7'-0" x 1-3/4"	DA	WD	F02	HM	5-3/4"	4	A-101	-	-	5	20 MIN.		

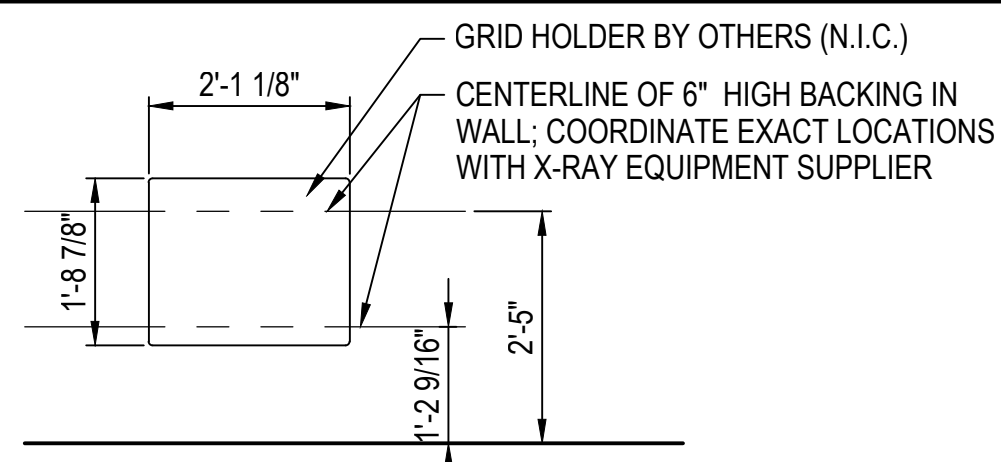
NOTE: ALL OTHER DOORS SHOWN ON FLOOR PLAN BUT NOT LISTED ON THIS SCHEDULE ARE EXISTING TO REMAIN.

DOOR AND FRAME SCHEDULE LEGEND

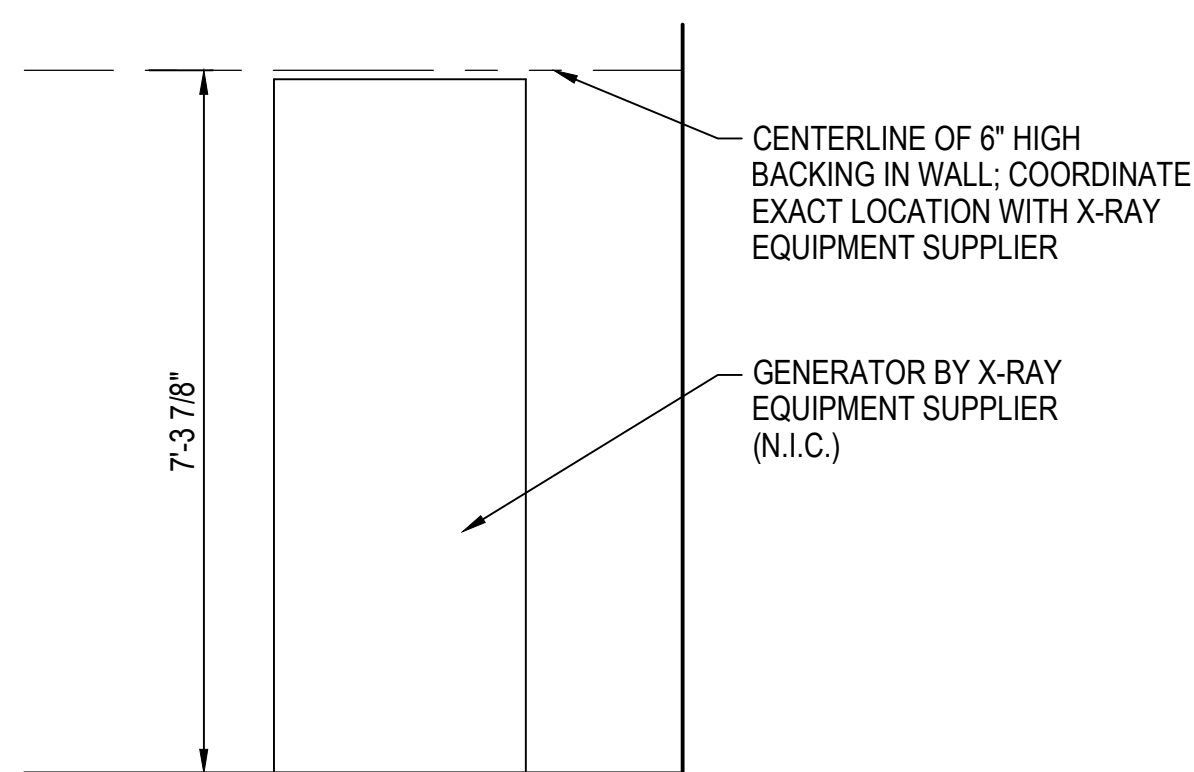
- WD WOOD
- HM HOLLOW METAL
- AL ALUMINUM
- LG LEADED GLASS

DOOR AND FRAME SCHEDULE NOTES

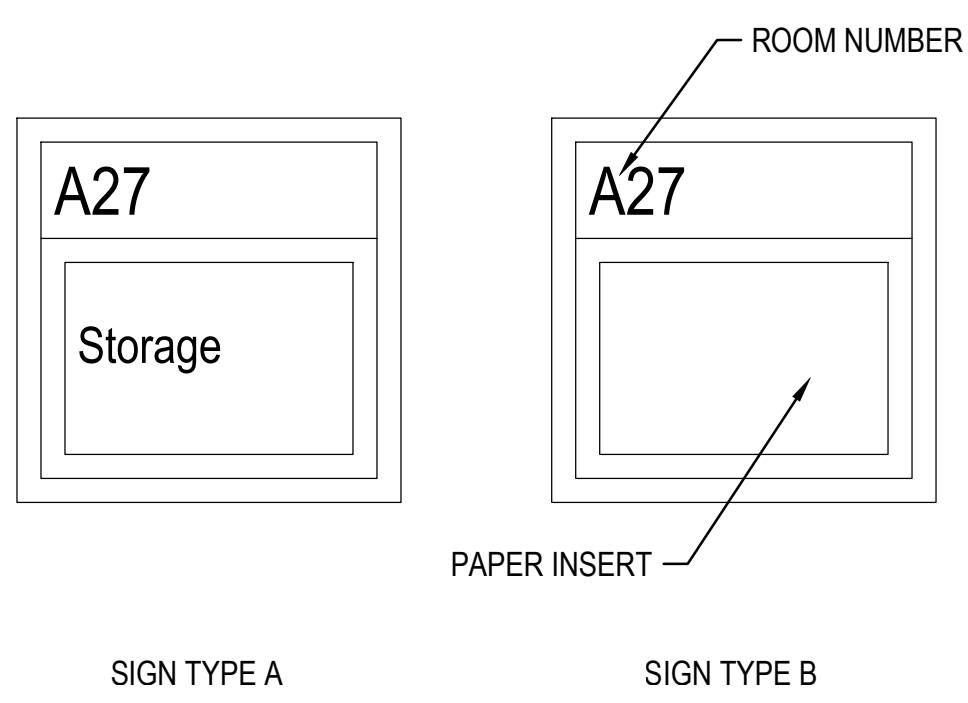
- 1. LEAD LINED DOOR.



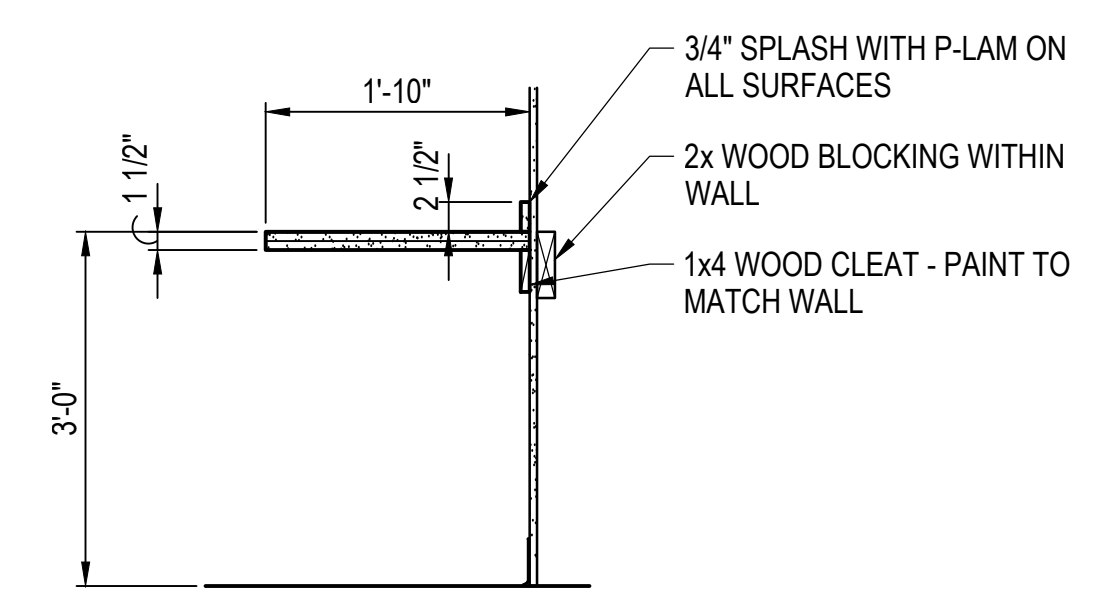
16 BLOCKING
SCALE: 1/2" = 1'-0"



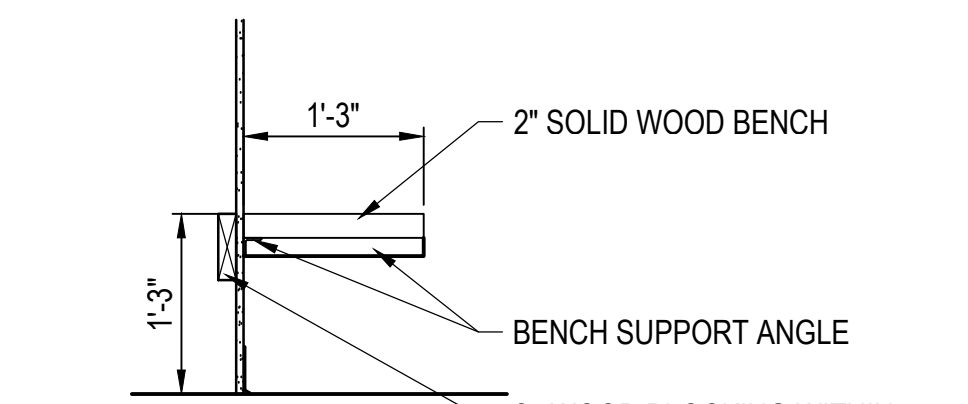
15 BLOCKING
SCALE: 1/2" = 1'-0"



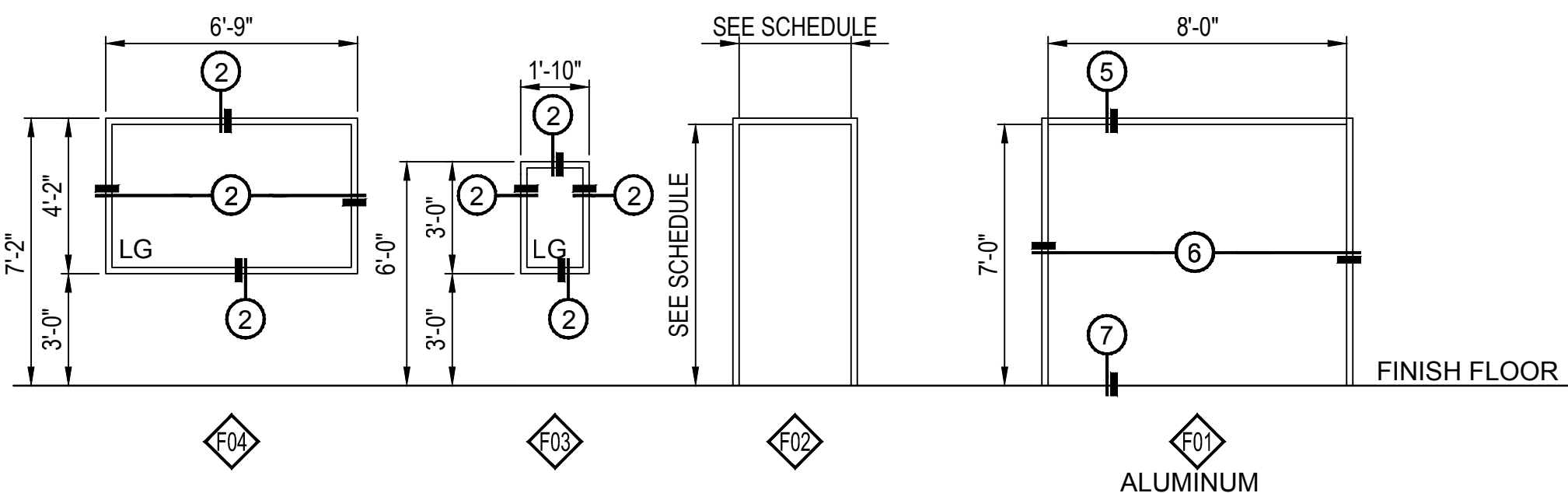
14 SIGN ELEVATIONS
SCALE: 3" = 1'-0"



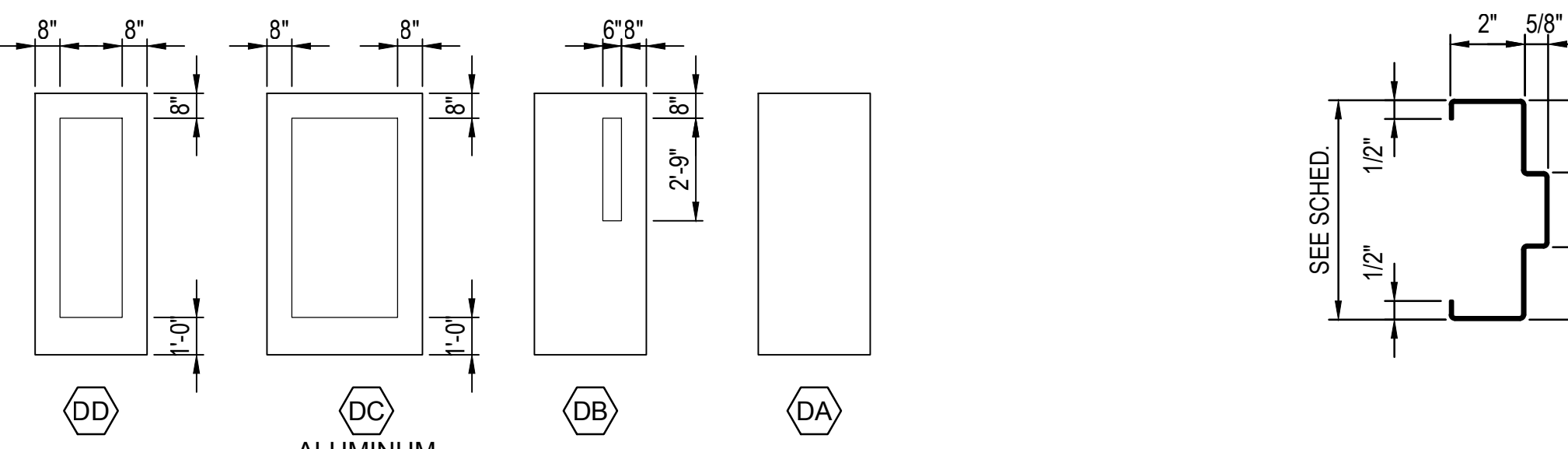
13 COUNTERTOP
SCALE: 3/4" = 1'-0"



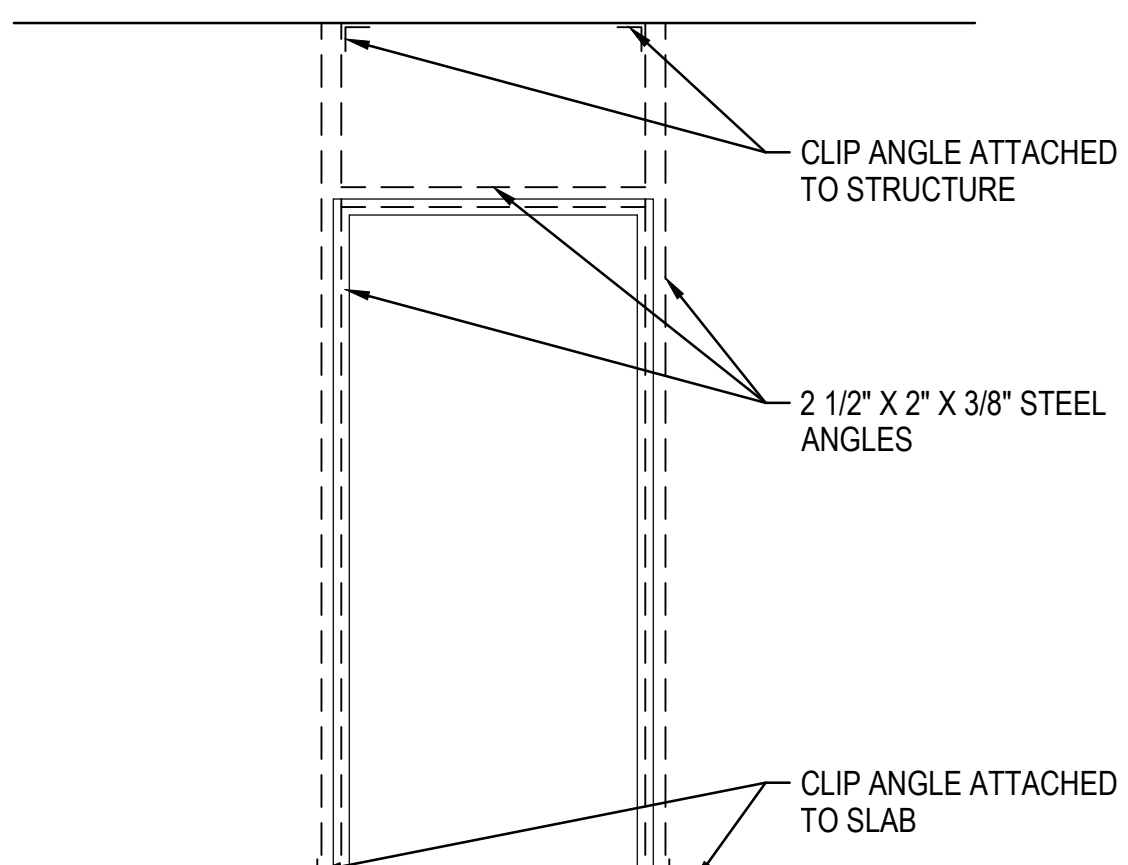
12 BENCH
SCALE: 3/4" = 1'-0"



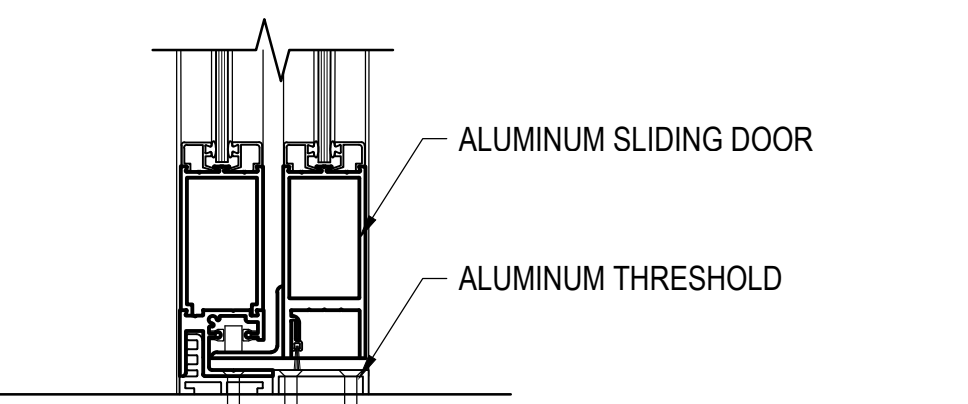
11 FRAME TYPES
SCALE: 1/4" = 1'-0"



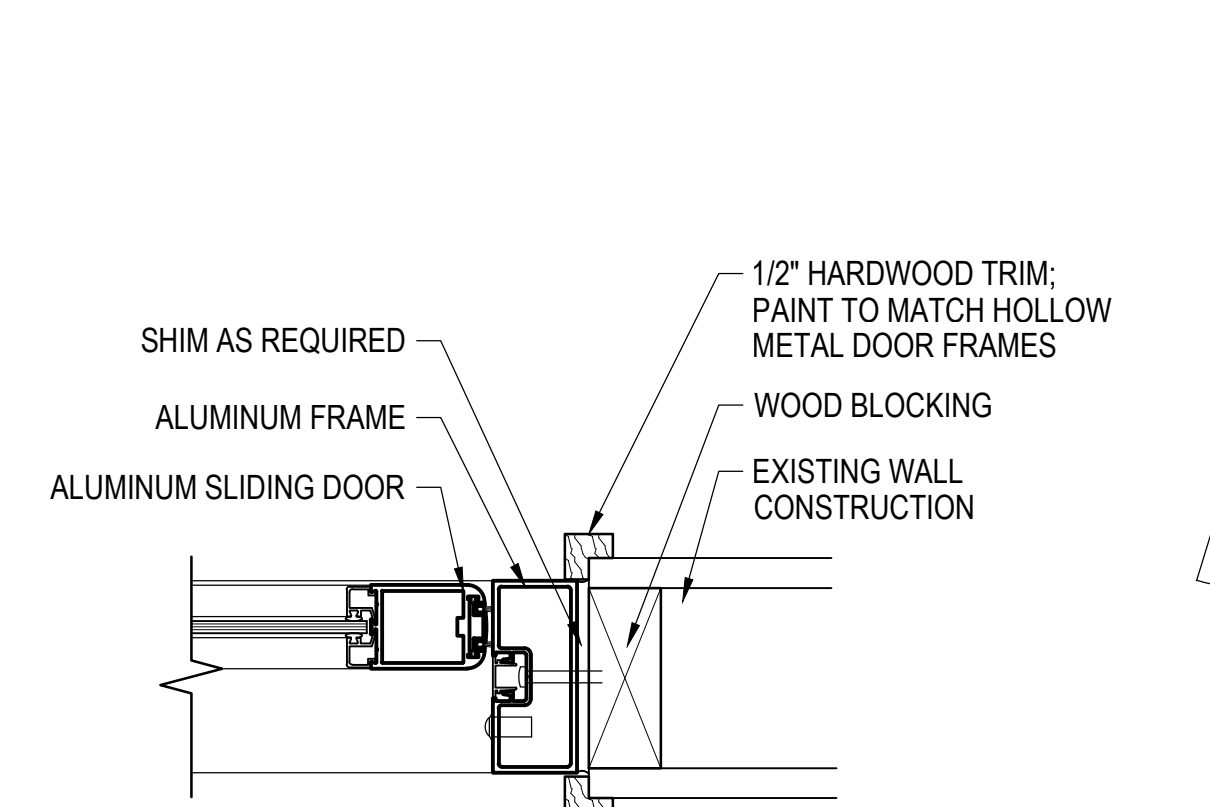
10 DOOR TYPES
SCALE: 1/4" = 1'-0"



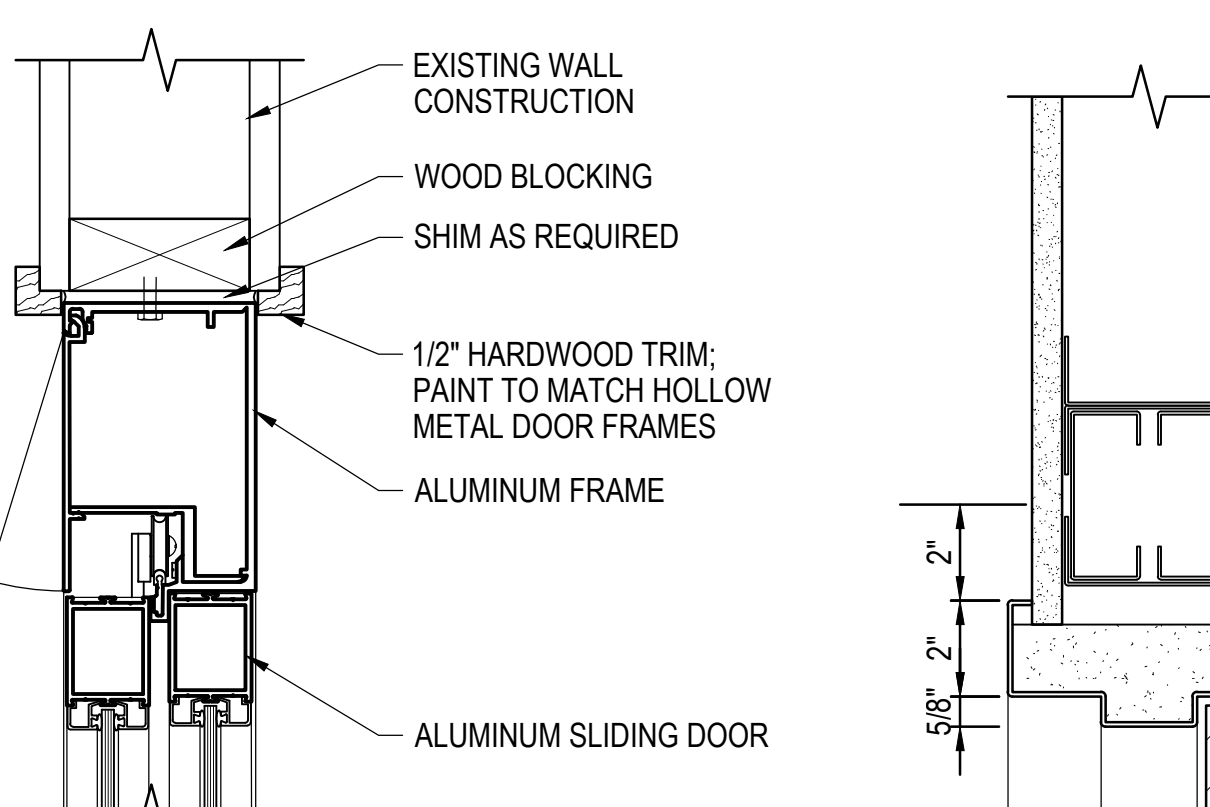
9 HOLLOW METAL FRAME PROFILE
SCALE: 1/4" = 1'-0"



8 LEAD LINED DOOR FRAME ELEVATION
SCALE: 1/2" = 1'-0"



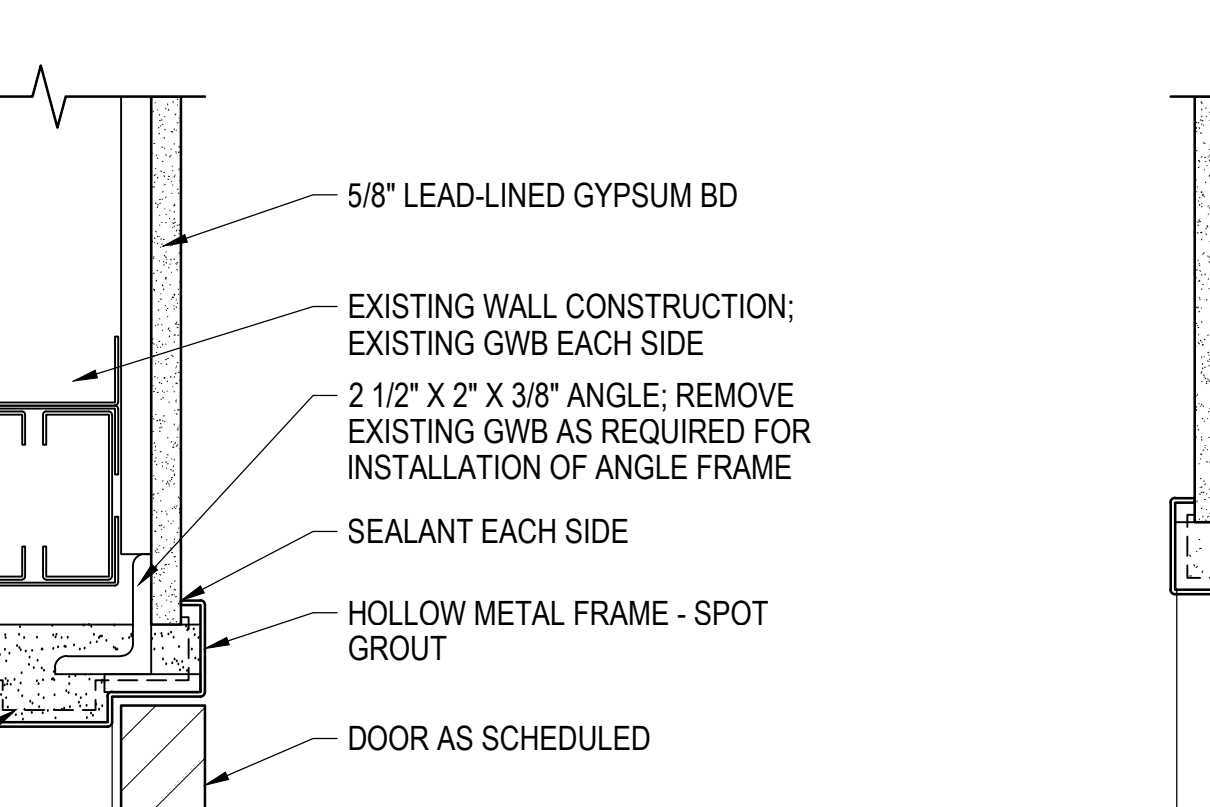
7 ALUMINUM FRAME - SILL
SCALE: 3" = 1'-0"



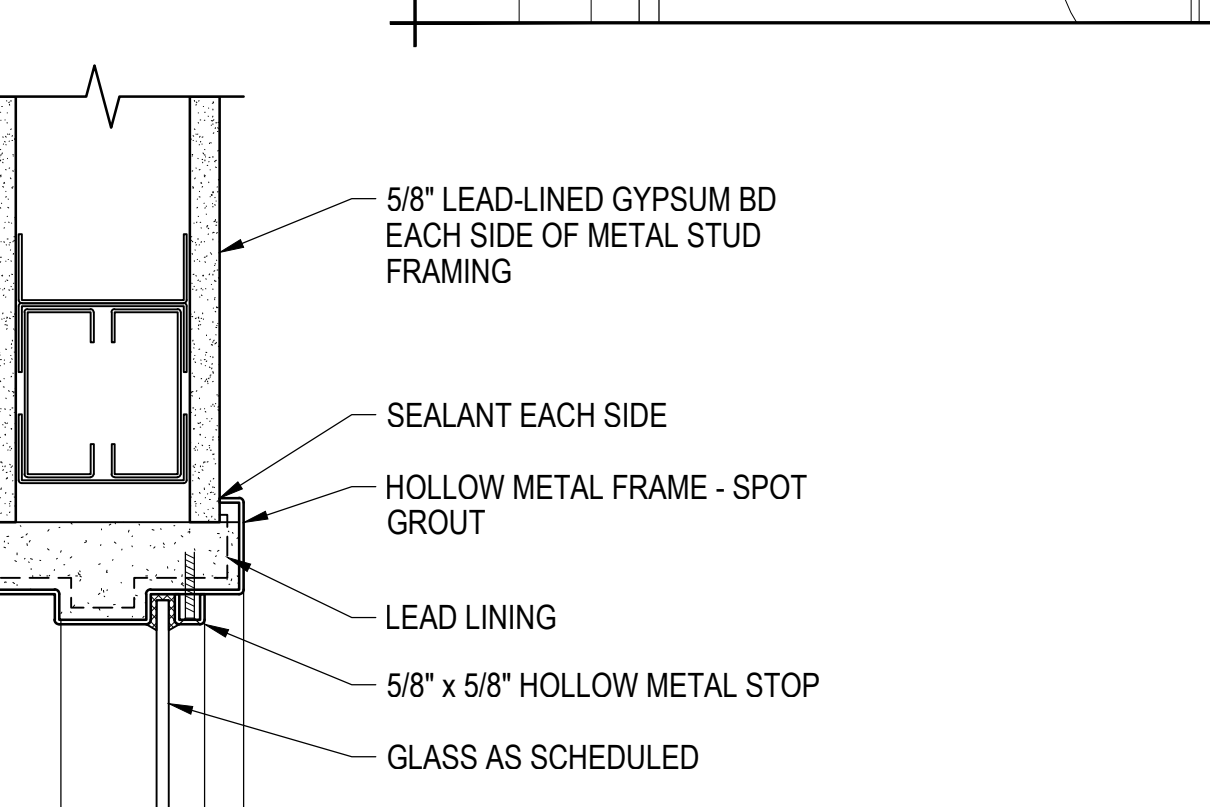
6 ALUMINUM FRAME - JAMB
SCALE: 3" = 1'-0"



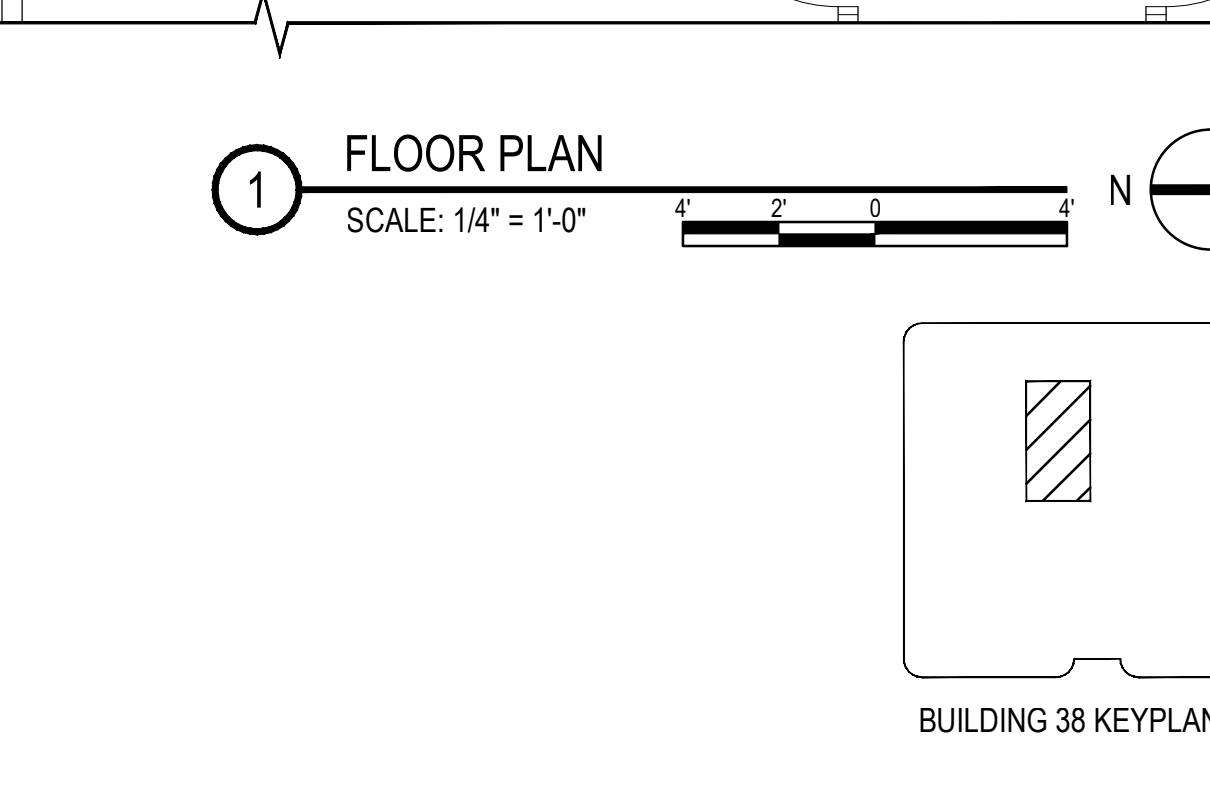
5 ALUMINUM FRAME - HEAD
SCALE: 3" = 1'-0"



4 HOLLOW METAL FRAME - HEAD/JAMB SIM.
SCALE: 3" = 1'-0"



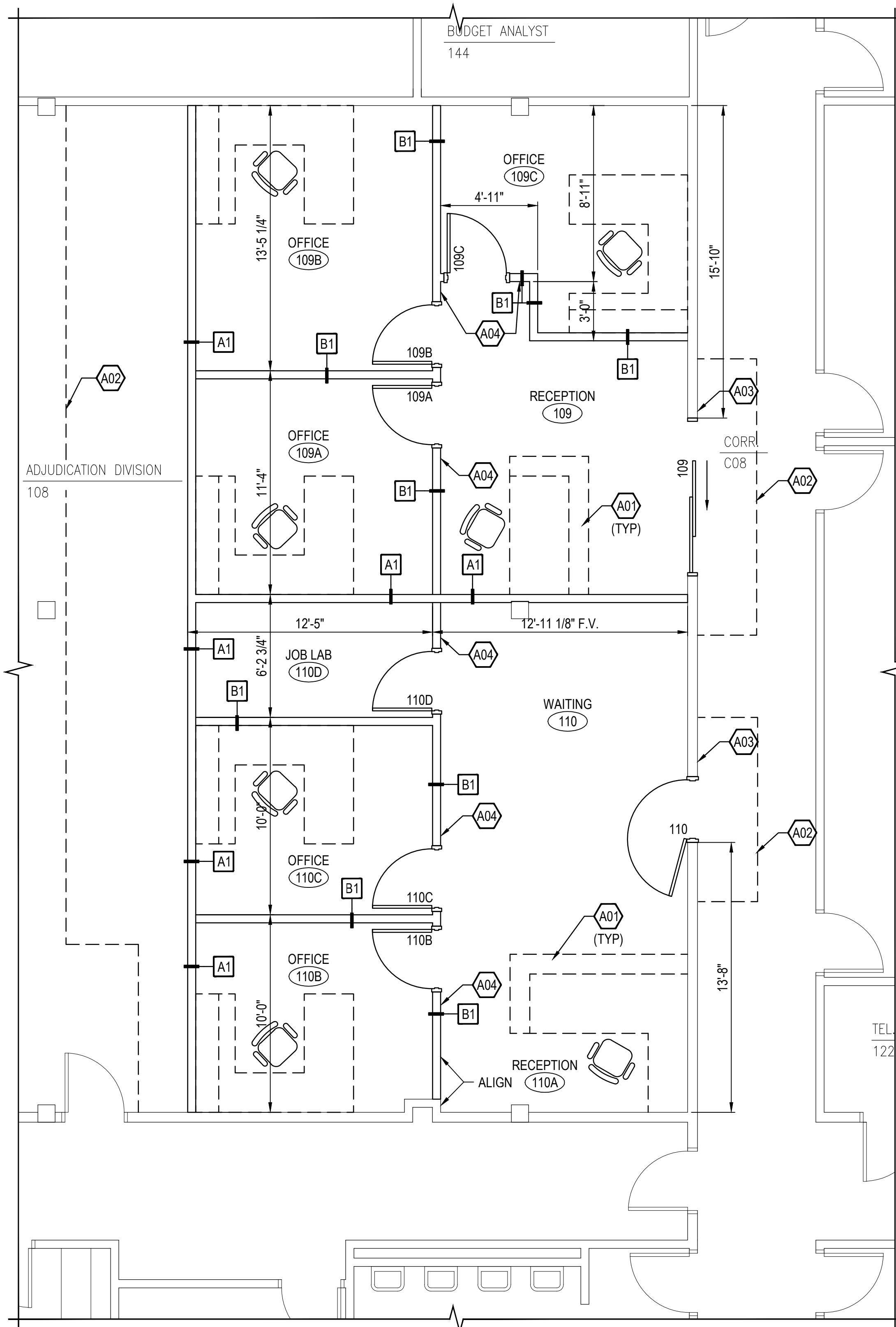
3 HOLLOW METAL FRAME - HEAD/JAMB SIM.
SCALE: 3" = 1'-0"



2 HOLLOW METAL FRAME - HEAD/JAMB SIM.
SCALE: 3" = 1'-0"

FLOOR PLAN KEY NOTES

- A01 FURNITURE SHOWN DASHED BY OTHERS, N.I.C.
- A02 PHASE 1 TEMPORARY PARTITION, COORDINATE WITH MECHANICAL AND ELECTRICAL WORK.
- A03 SIGN TYPE B; SEE DETAIL 14/A-101.
- A04 SIGN TYPE A; SEE DETAIL 14/A-101.



1 FLOOR PLAN
SCALE: 1/4" = 1'-0"

NO.	REVISIONS	DATE

CONSULTANTS:

KHA
Kenneth Hahn Architects

FARRIS ENGINEERING
OMAHA | LINCOLN | DES MOINES | COLORADO SPRINGS
farris-usa.com
FEI #164008
This document and the information contained may not be reproduced or excerpted from without the express written permission of Farris Engineering, Inc. Unauthorized copying, disclosure or construction use are prohibited by the copyright law.

ARCHITECT/ENGINEERS:

21 Delta Engineers

21 Delta Engineers, LLC
14216 Dayton Cir - Suite #5
Omaha, Nebraska 68137-5566
PH: (402) 496-4115
Fax: (402) 384-8900

Drawing Title
FLOOR PLAN-BUILDING 38, DOOR AND FRAME SCHEDULE, AND DETAILS

Approved Project Director

Project Title
CT SCANNER SITE PREP DESIGN

Project Number
438-15-100

Building Number
5 AND 38

Location
SIOUX FALLS, SD VAMC

Date
JANUARY 20, 2017

Checked
KJH

Drawn
DJK

Drawing Number
A-101

Dwg 6 of 37

Office of Construction and Facilities Management

Department of Veterans Affairs