

SIGNOFF / APPROVAL NOTES



Guldmann Inc.
14401 McCormick Drive
Tampa FL, 33626 Unit A
Toll Free: 1(800)-664-8834
Fax: 1(813)-880-9538
Email: info@Guldmann.net

NOTES

- 1. HOIST = 770 LBS
- 2. FLUSHED RECESSED / TYPE - P
- 3. CEILING HEIGHT = 8' - 0"
AFF TO DECK = 11' - 11"
- 4. ATTACHMENT TYPE =
CONCRETE BEAM
SPAN = 2' - 0"

- 1. The facility structure capacity must be able to support the load specified on the installation drawing.
- 2. Electrical power source provided by the facility, position to be verified in the field.
- 3. Guldmann Inc. reserves the right to slightly modify the track layout if necessary without Facility approval.
This includes lowering the system to avoid ceiling objects.
- 4. Guldmann Inc. will not be held responsible for any damages, inconvenience, resulting from hitting any non visible conduits during our installation process of which we have not been advised.
- 5. Modifications of door headers by the facility.
- 6. Signed drawings are required prior to ordering and installation of ceiling lifts.
This signature of each drawing confirms agreement of all the conditions listed above.
- 7. Systems are tested at 1.5 times capacity.
550 lbs. tested at 825 lbs.; 770 lbs. tested at 1155 lbs.; 825 lbs. tested at 1238 lbs.; 1100 lbs. tested at 1650 lbs.

MY SIGNATURE BELOW VERIFIES THAT I HAVE:

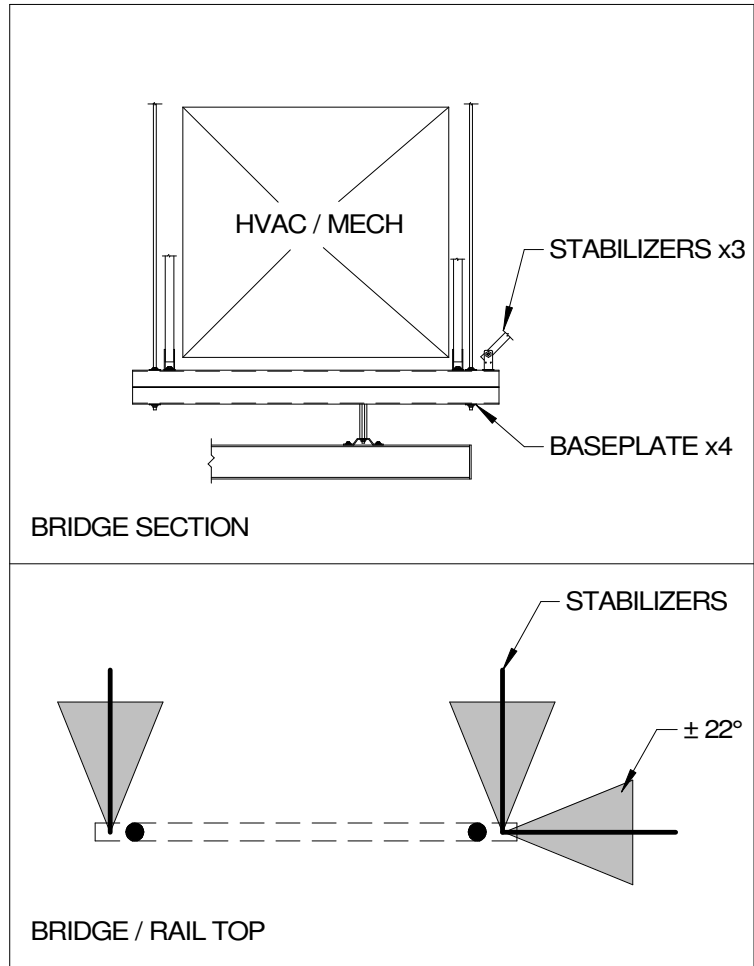
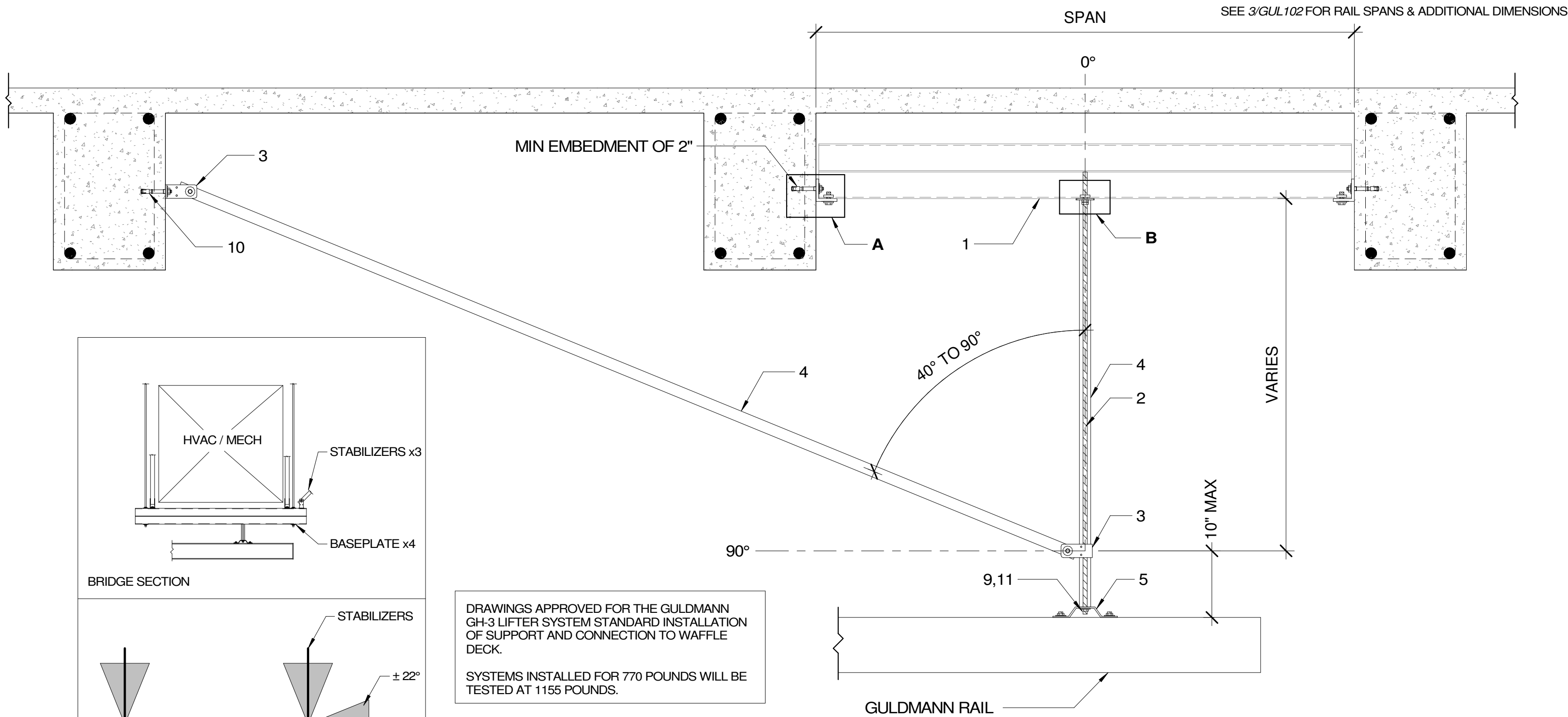
Reviewed all 8 pages, with a total quantity of 5 room(s), 5 system(s) for the approbation of layout for each room and the approbation of structure for each room.

CUSTOMER APPROVAL: DATE:

St. Cloud VA Healthcare
St. Cloud VA Bldg. 51 L1 East
4801 Veteran Dr.
St. Cloud, MN 56303
PROJECT ID:103896

Revision Schedule			
Date	Issued by	Letter	Description
06/02/2024	TRC	A	UPDATED BACKGROUNDS, MINOR ADJUSTMENTS TOP RAILS FOR WALL,DOOR CHANGES
06/17/2024	MGE	B	EXTENDED LIFTS RM 111, RM 117, RM 127. UPDATED CHART. MATERIAL

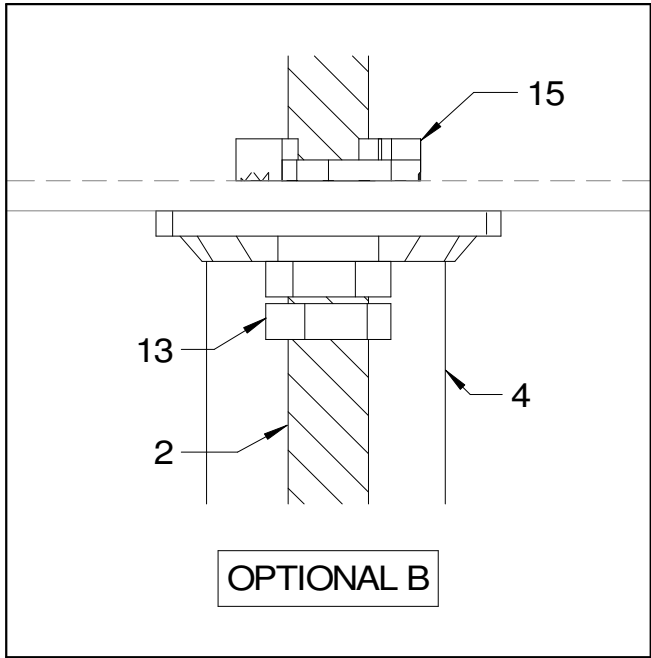
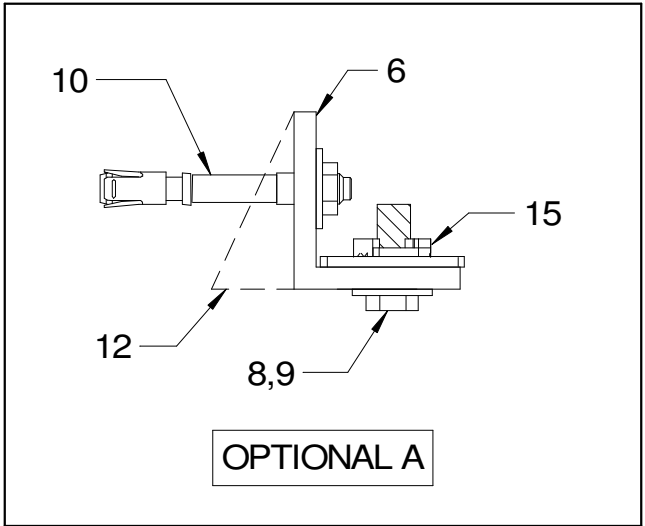
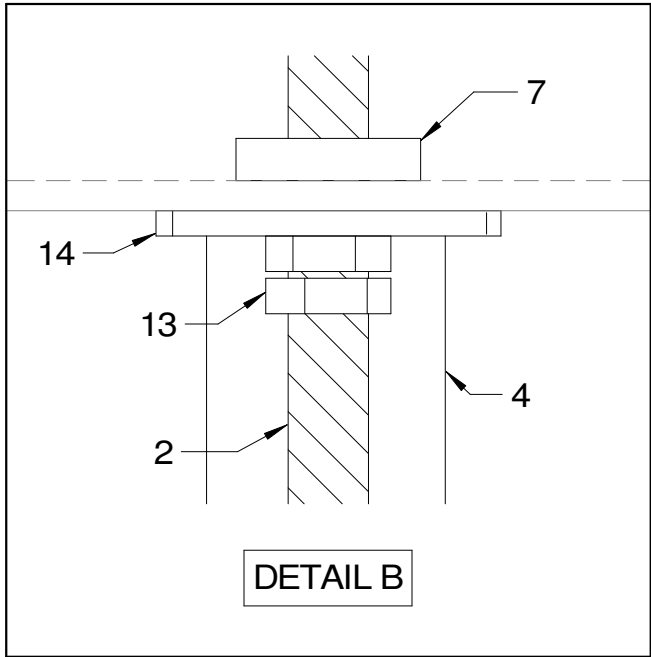
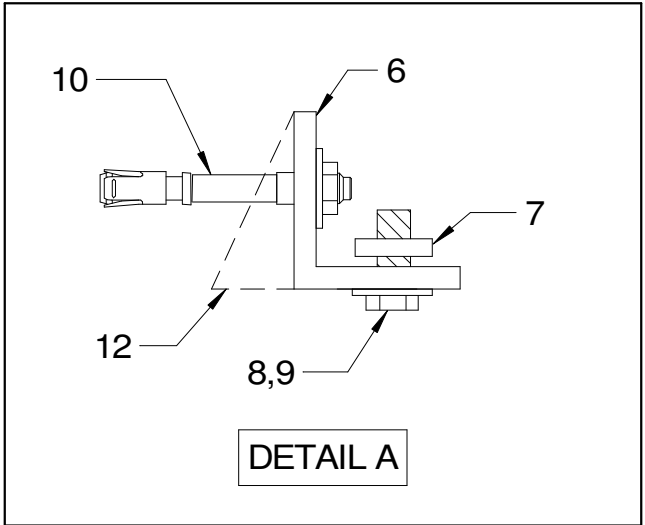
ACCURATE TO 4" BASED ON PDF CONVERSION	
DATE: 01/24/2024	DRAWN BY: MGE
APPROVED BY:	
PROJECT NAME: St. Cloud VA Bldg. 51 L1 East	
SHEET DESCRIPTION: FACILITY SIGNOFF	
SHEET NO: GUL101	



DRAWINGS APPROVED FOR THE GULDANN GH-3 LIFTER SYSTEM STANDARD INSTALLATION OF SUPPORT AND CONNECTION TO WAFFLE DECK.

SYSTEMS INSTALLED FOR 770 POUNDS WILL BE TESTED AT 1155 POUNDS.

WAFFLE DECK / CONCRETE BEAM		
TAG	ITEM NUMBER	DESCRIPTION
1	P5501-T	2-7/16" X 10' B2B STRUT SLOTTED
2	123460	3/8" B7 THREADED ROD
3	550439	STABILIZER BRACKET KIT - GULDANN
4	550481-US	1" Ø-6013-T6 AL TUBE - GULDANN
5	550435	CEILING BRACKET KIT - GULDANN
6	P1026	2 HOLE 90 DEG. BRACKET
7	377882	MQM-F WINGNUT 3/8"
8	411764	3/8" X 1-1/4" HEX BOLT
9	11101273	3/8" X 1-1/4" X 1/8" WASHER (THICK)
10	2231456	3/8" X 3-3/4" KB-TZ2 ANCHOR
11	1137024	3/8" NYLOCK NUT
12	33873	3/8" BEVELLED WASHER (USED AS NEEDED)
13	411752	3/8" HEX NUT
14	370632	MQZ-L BASEPLATE 3/8"
15	377885	MQA-F SADDLE NUT 3/8" (OPTIONAL)





Guldann Inc.
14401 McCormick Drive
Tampa FL, 33626 Unit A
Toll Free: 1(800)-664-8834
Fax: 1(813)-880-9558
Email: info@Guldann.net

- NOTES
- HOIST = 770 LBS
 - FLUSHED RECESSED / TYPE - P
 - CEILING HEIGHT = 8' - 0"
AFF TO DECK = 11' - 11"
 - ATTACHMENT TYPE =
CONCRETE BEAM
SPAN = 2' - 0"

Revision Schedule		
Date	Issued by	Number
06/02/2024	TRC	A
DATE:	DRAWN BY:	
01/24/2024	MGE	
APPROVED BY:		
PROJECT NAME:	St. Cloud VA Bldg. 51 L1 East	
SHEET DESCRIPTION:	ATTACHMENT	
SHEET NO:	GUL103	

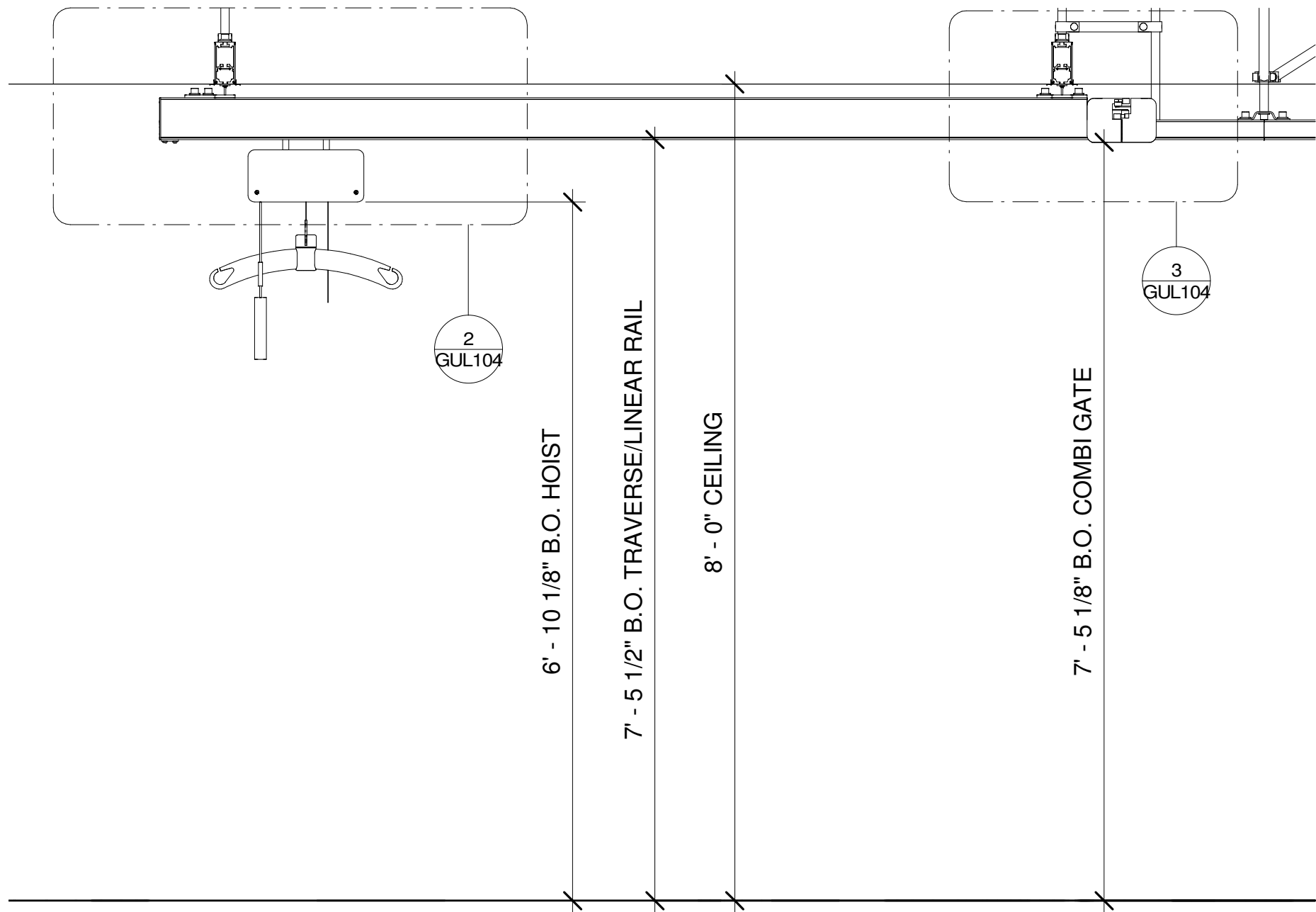
SEE 3/GUL102 FOR RAIL SPANS & ADDITIONAL DIMENSIONS



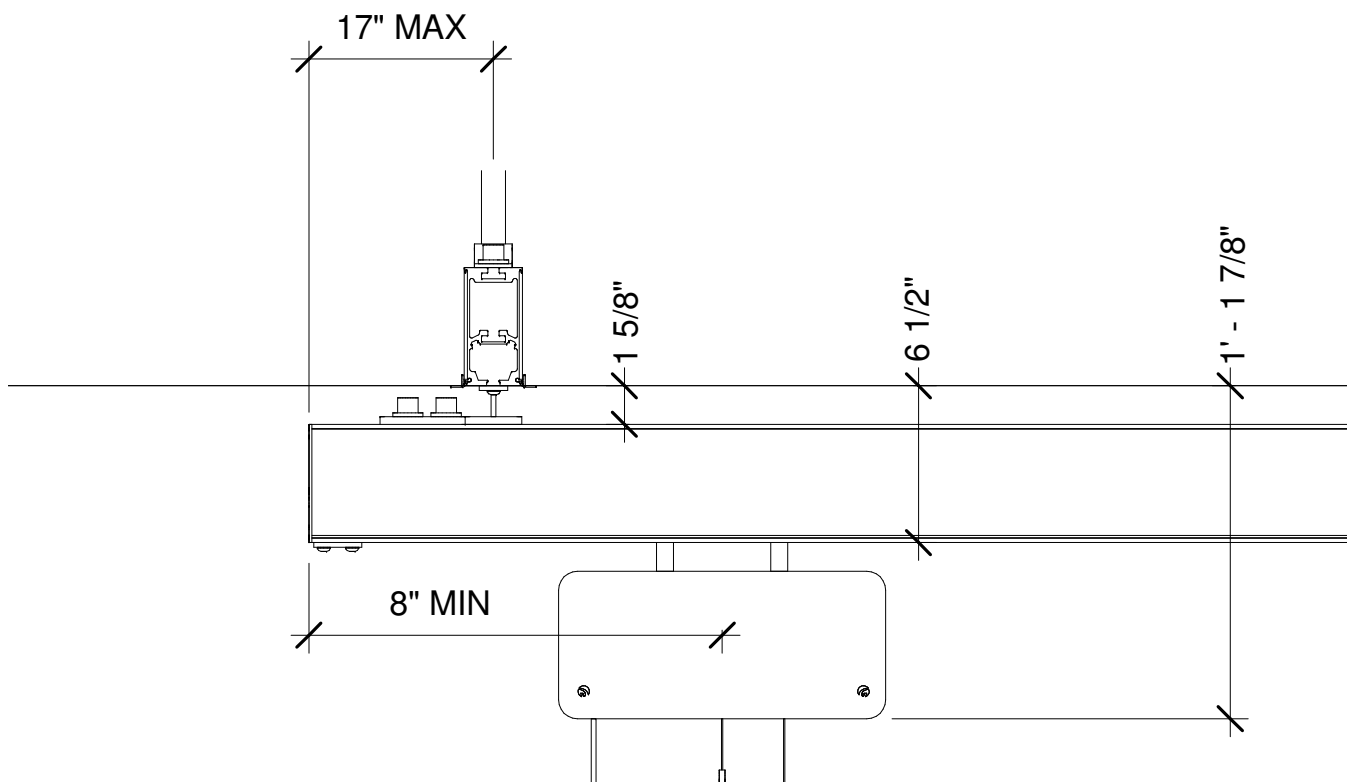
Guldmann Inc.
14401 McCormick Drive
Tampa FL, 33626 Unit A
Toll Free: 1(800)-664-8834
Fax: 1(813)-880-9558
Email: info@Guldmann.net

NOTES

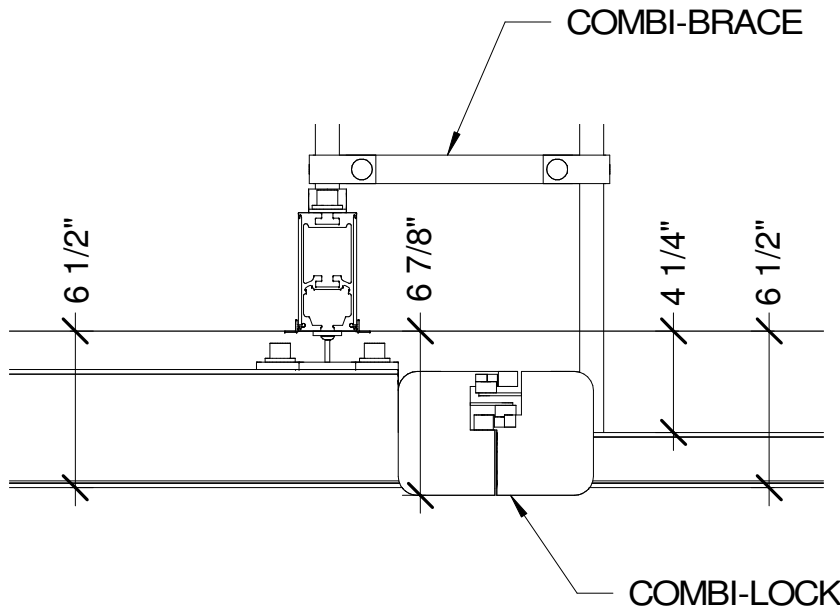
1. HOIST = 770 LBS
2. FLUSHED RECESSED / TYPE - P
3. CEILING HEIGHT = 8' - 0"
AFF TO DECK = 11' - 11"
4. ATTACHMENT TYPE =
CONCRETE BEAM
SPAN = 2' - 0"



1 TYP ELEVATION
3/4" = 1'-0"



2 CEILING / HOIST DETAIL
1 1/2" = 1'-0"



3 CEILING / COMBI-LOCK DETAIL
1 1/2" = 1'-0"

Revision Schedule		
Date	Issued by	Number
06/02/2024	TRC	A
DATE: 01/24/2024		DRAWN BY: MGE
APPROVED BY:		
PROJECT NAME: St. Cloud VA Bldg. 51 L1 East		
SHEET DESCRIPTION: PROJECT DETAILS		
SHEET NO: GUL104		

VERIFY SIZE AND LOCATION IN FIELD.

SEE 3/GUL102 FOR RAIL SPANS & ADDITIONAL DIMENSIONS



Guldmann Inc.
14401 McCormick Drive
Tampa FL, 33626 Unit A
Toll Free: 1(800)-664-8834
Fax: 1(813)-880-9558
Email: info@Guldmann.net

NOTES

- 1. HOIST = 770 LBS
- 2. FLUSHED RECESSED / TYPE - P
- 3. CEILING HEIGHT = 8' - 0"
AFF TO DECK = 11' - 11"
- 4. ATTACHMENT TYPE =
CONCRETE BEAM
SPAN = 2' - 0"

KEY

- Hoist Transformer
- Ceiling bracket, Extended
- Stabilizers
- B rail
- Hoist

ACCURATE TO 4" BASED
ON PDF CONVERSION

Revision Schedule

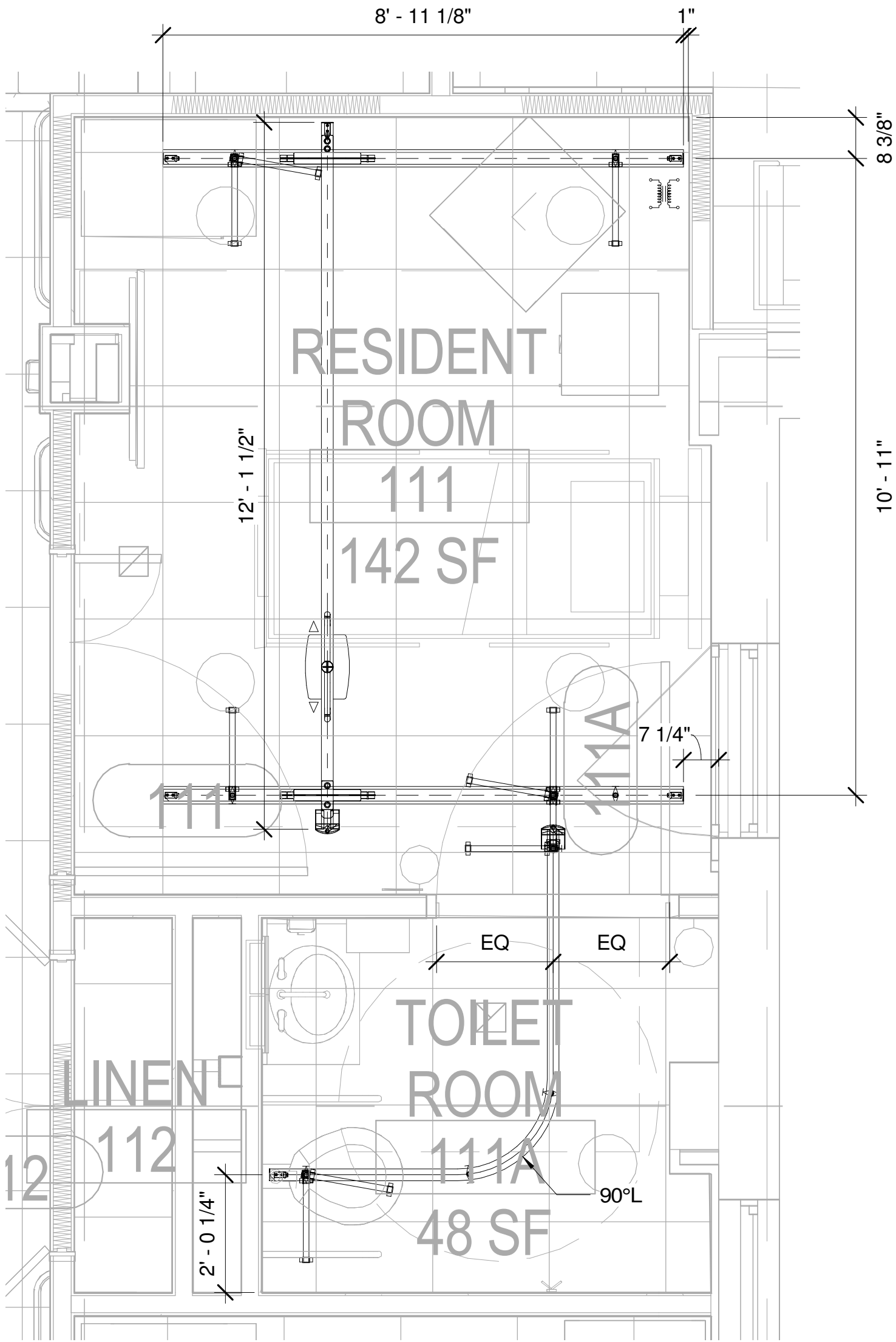
Date	Issued by	Number
06/02/2024	TRC	A
06/17/2024	MGE	B

DATE: 01/24/2024
DRAWN BY: MGE

APPROVED BY:
PROJECT NAME:
St. Cloud VA Bldg. 51 L1 East

SHEET DESCRIPTION:
RM 111

SHEET NO:
GUL105



1 RM 111
1/2" = 1'-0"

VERIFY SIZE AND LOCATION IN FIELD.

SEE 3/GUL102 FOR RAIL SPANS & ADDITIONAL DIMENSIONS



Guldmann Inc.
14401 McCormick Drive
Tampa FL, 33626 Unit A
Toll Free: 1(800)-664-8834
Fax: 1(813)-880-9558
Email: info@Guldmann.net

NOTES

- 1. HOIST = 770 LBS
- 2. FLUSHED RECESSED / TYPE - P
- 3. CEILING HEIGHT = 8' - 0"
AFF TO DECK = 11' - 11"
- 4. ATTACHMENT TYPE =
CONCRETE BEAM
SPAN = 2' - 0"

KEY

- Hoist Transformer
- Ceiling bracket, Extended
- Stabilizers
- B rail
- Hoist

ACCURATE TO 4" BASED
ON PDF CONVERSION

Revision Schedule

Date	Issued by	Number
06/02/2024	TRC	A
06/17/2024	MGE	B

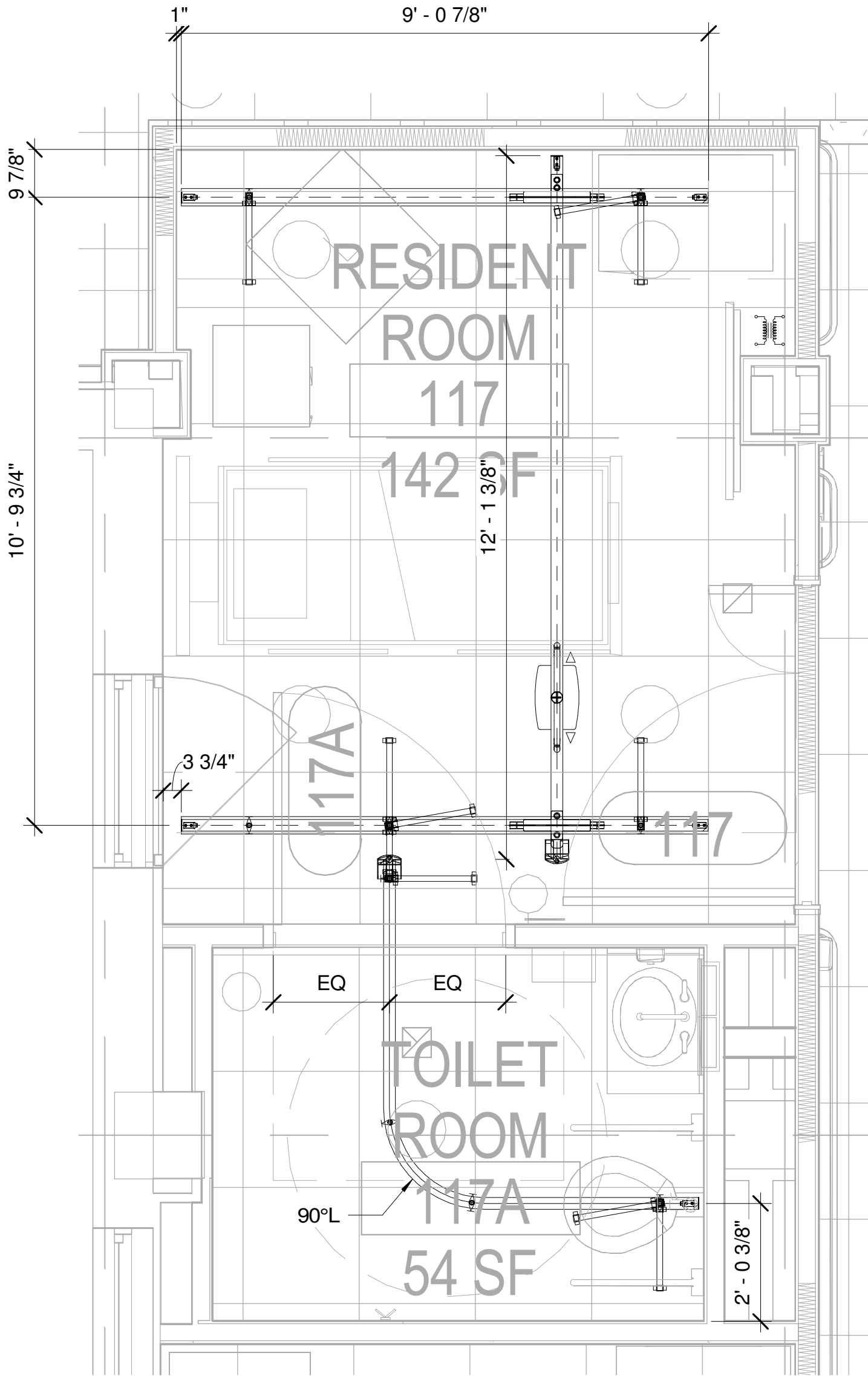
DATE:	DRAWN BY:
01/24/2024	MGE

APPROVED BY:

PROJECT NAME:
St. Cloud VA Bldg. 51 L1 East

SHEET DESCRIPTION:
RM 117

SHEET NO:
GUL106



1 RM 117
1/2" = 1'-0"

VERIFY SIZE AND LOCATION IN FIELD.

SEE 3/GUL102 FOR RAIL SPANS & ADDITIONAL DIMENSIONS



Guldmann Inc.
14401 McCormick Drive
Tampa FL, 33626 Unit A
Toll Free: 1(800)-664-8834
Fax: 1(813)-880-9558
Email: info@Guldmann.net

NOTES

1. HOIST = 770 LBS
2. FLUSHED RECESSED / TYPE - P
3. CEILING HEIGHT = 8' - 0"
AFF TO DECK = 11' - 11"
4. ATTACHMENT TYPE =
CONCRETE BEAM
SPAN = 2' - 0"

KEY

- Hoist Transformer
- Ceiling bracket, Extended
- Stabilizers
- B rail
- Hoist

ACCURATE TO 4" BASED
ON PDF CONVERSION

Revision Schedule

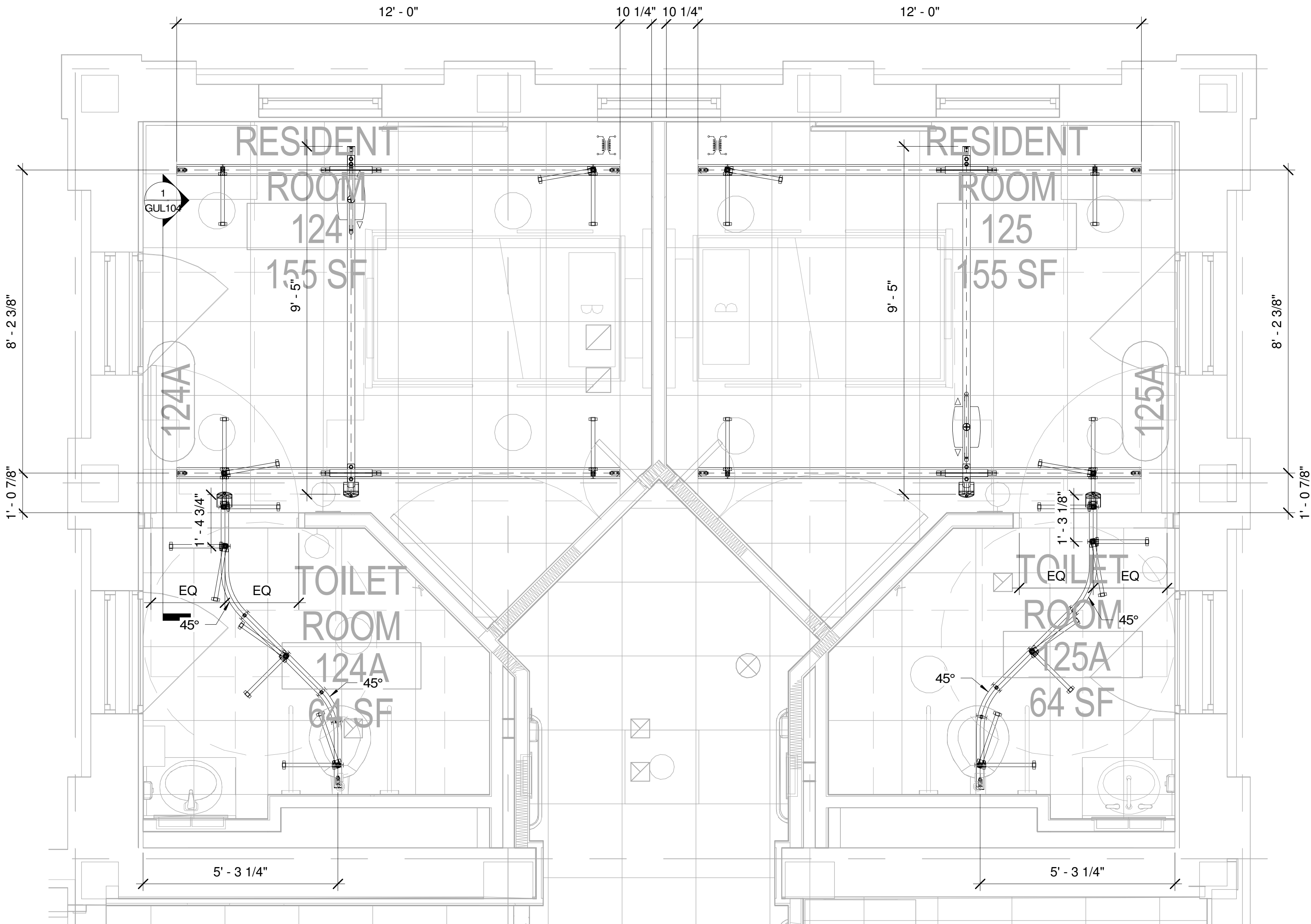
Date	Issued by	Number
06/02/2024	TRC	A

DATE: 01/24/2024
DRAWN BY: MGE

APPROVED BY:
PROJECT NAME:
St. Cloud VA Bldg. 51 L1 East

SHEET DESCRIPTION:
RM 124 & 125

SHEET NO:
GUL107



1 RM 124 & 125
1/2" = 1'-0"

VERIFY SIZE AND LOCATION IN FIELD.

SEE 3/GUL102 FOR RAIL SPANS & ADDITIONAL DIMENSIONS



Guldmann Inc.
14401 McCormick Drive
Tampa FL, 33626 Unit A
Toll Free: 1(800)-664-8834
Fax: 1(813)-880-9558
Email: info@Guldmann.net

NOTES

- 1. HOIST = 770 LBS
- 2. FLUSHED RECESSED / TYPE - P
- 3. CEILING HEIGHT =
AFF TO DECK = UNKNOWN
- 4. ATTACHMENT TYPE = UNKNOWN
CONCRETE BEAM
SPAN = 2' - 0"
- 5. CURTAIN TO BE SPLIT OR
WALLMOUNTED SWING AWAY

KEY

- Hoist Transformer
- Ceiling bracket, Extended
- Stabilizers
- B rail
- Hoist

ACCURATE TO 4" BASED
ON PDF CONVERSION

Revision Schedule

Date	Issued by	Number
06/02/2024	TRC	A
06/17/2024	MGE	B

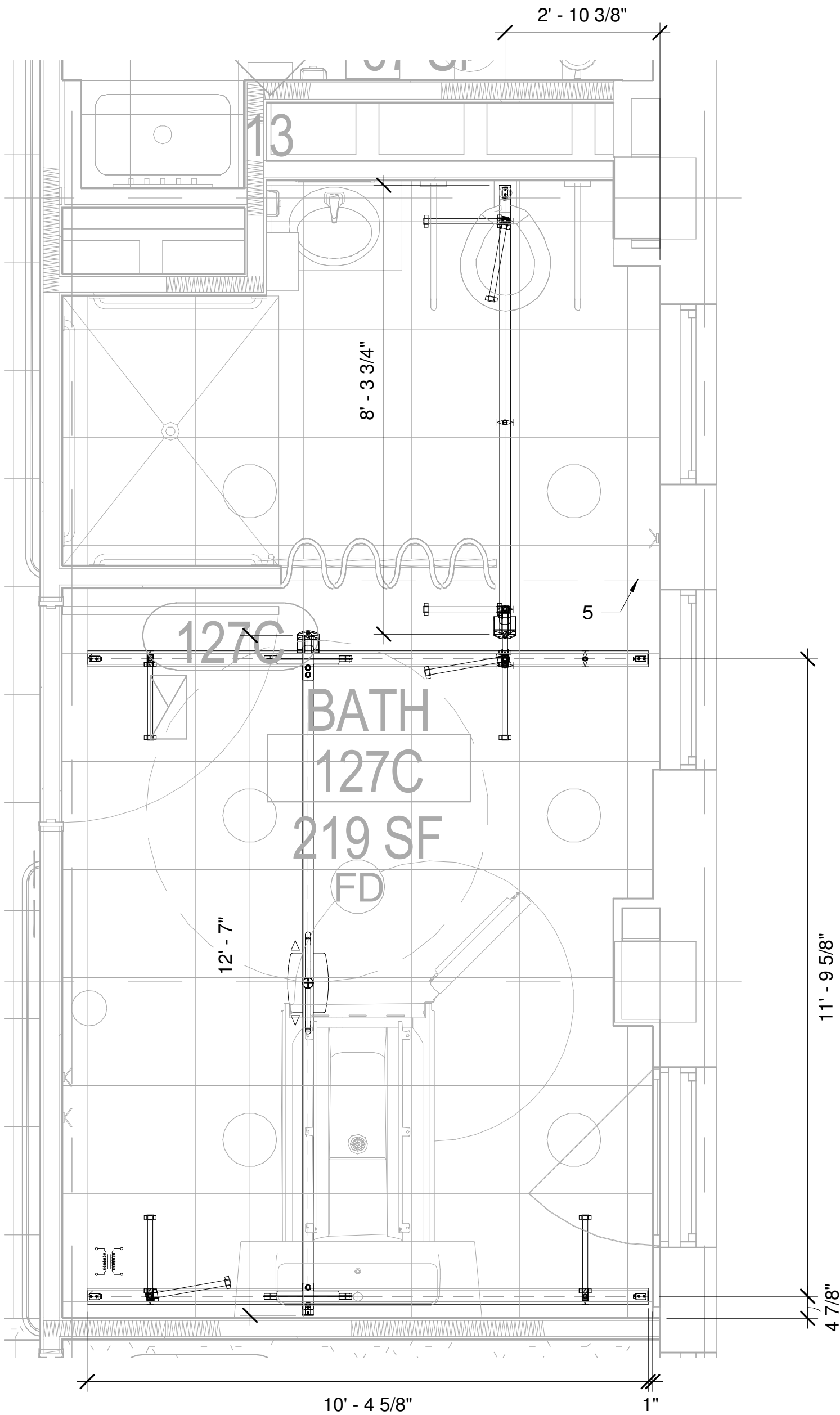
DATE: 01/24/2024
DRAWN BY: MGE

APPROVED BY:

PROJECT NAME:
St. Cloud VA Bldg. 51 L1 East

SHEET DESCRIPTION:
RM 127

SHEET NO:
GUL108



1 RM 127
1/2" = 1'-0"