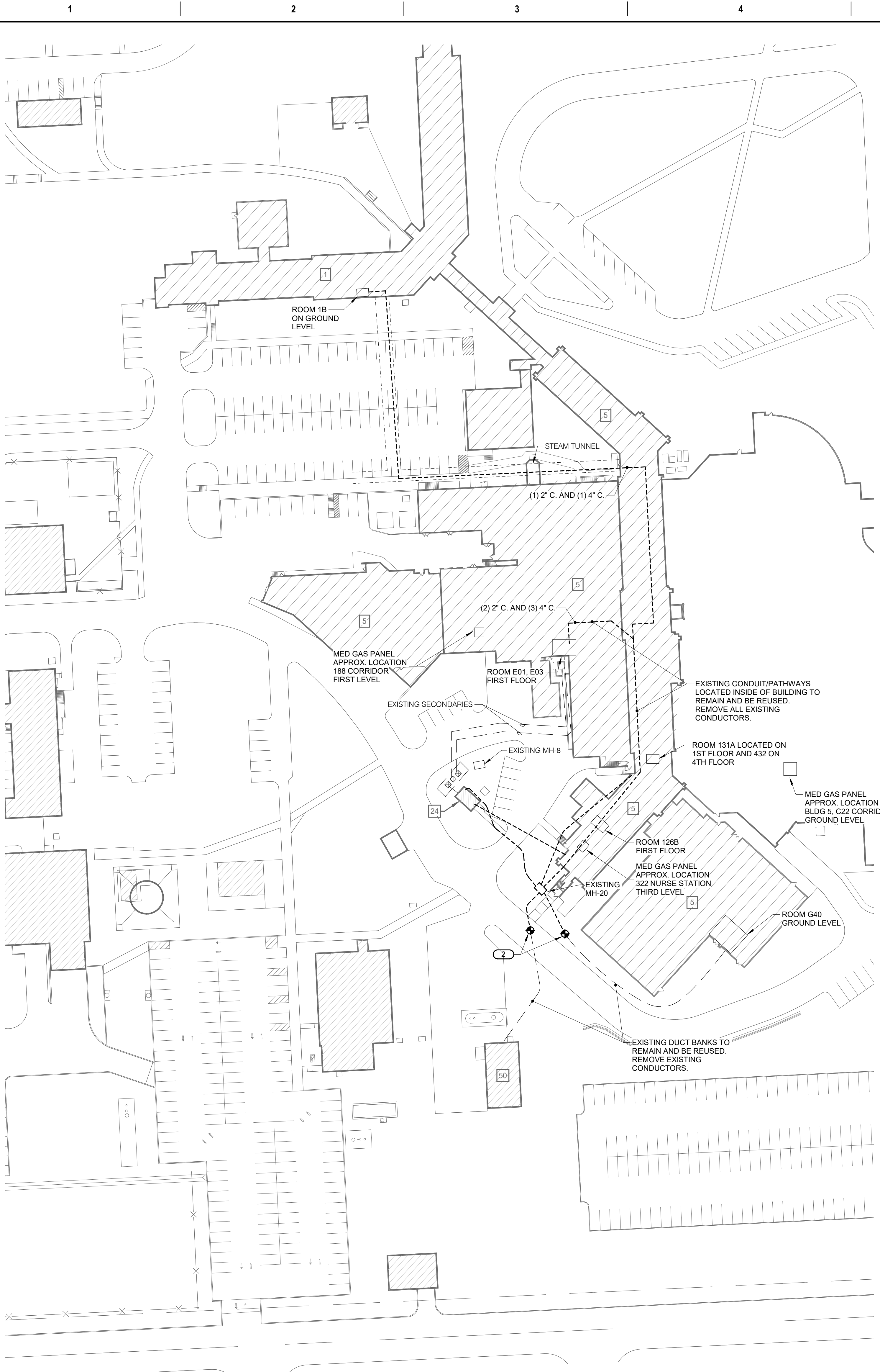
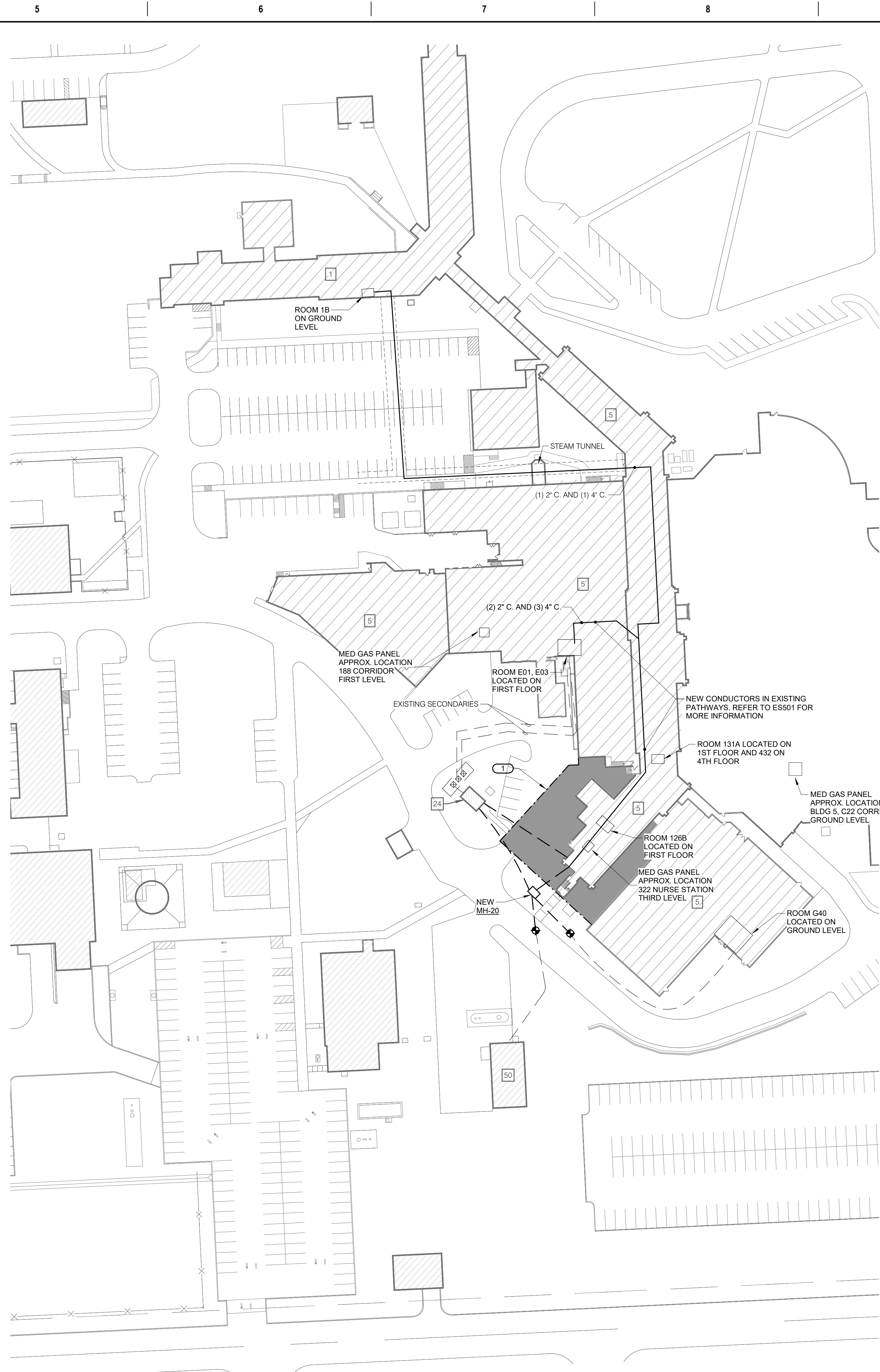


5/20/2025 12:53:35 PM  
B:\36071904249.04\_VA-Wash DC-VA Sioux Falls New SPS\MEP\T21\_1904249.04\_16584\_VA-Wash DC-VA Sioux Falls New SPS\_C.rvt  
VA FORM 08 - 6231



**1 CAMPUS SITE PLAN - ELECTRICAL DEMO**  
1" = 50'-0"



**2 CAMPUS SITE PLAN - ELECTRICAL**  
1" = 50'-0"

- SHEET NOTES:**
- ALL NEW CONDUCTORS MUST BE RAN FOR ALL BRANCHES OF EMERGENCY POWER. NO SPLICING WILL BE ALLOWED.
  - ALL NEW CONDUCTORS MUST BE RAN FOR CONTROL WIRING SERVING EQUIPMENT ON EMERGENCY POWER. NO SPLICING WILL BE ALLOWED.
  - THIS SHEET SERVES TO PROVIDE APPROXIMATE LOCATION OF CONDUIT, CONDUCTORS, AND DUCT BANKS. REFER TO ES100, ES400, ES401, ES500, AND ES501 FOR MORE INFORMATION ON SIZES AND QUANTITIES.
- KEYNOTES:** **(1)**
- APPROXIMATE LOCATION OF NEW ADDITION FOOTPRINT.
  - SUGGESTED LOCATION OF WHERE TO STOP REMOVAL OF EXISTING DUCTBANK. COORDINATE EXACT LOCATION WITH CIVIL, STRUCTURAL, AND ARCHITECTURAL PLANS.

<b>CONSULTANT</b> <b>IMEG</b> 2802 10TH STREET DES MOINES, IA 50322 515.334.9900 FAX: 515.334.9988 www.imegcorp.com PROJECT # 1904249.04 IMEG CORP. RESERVES PROPRIETARY RIGHTS, INCLUDING COPYRIGHTS, TO THIS DRAWING AND THE DATA SHOWN THEREON. NO DRAWING OR DATA ARE THE EXCLUSIVE PROPERTY OF IMEG CORP. AND SHALL NOT BE USED OR REPRODUCED FOR ANY OTHER PROJECT WITHOUT THE EXPRESS WRITTEN APPROVAL AND PARTICIPATION OF IMEG CORP. © 2025 IMEG CORP.		<b>ARCHITECT/ENGINEER OF RECORD</b> <b>ANDERSON</b> 13605 1st Ave. N. #100 Plymouth, MN 55441 P 763.412.4000   F 763.412.4090   ae-mn.com Anderson Engineering of Minnesota, LLC   Proj # 16584		<b>STAMP</b> KRISTEN L. SPINA 2108 IOWA 5/20/2025	<b>Office of Construction and Facilities Management</b> <b>VA</b> U.S. Department of Veterans Affairs	<b>Drawing Title</b> CAMPUS SITE PLAN - ELECTRICAL <b>Approved:</b>	<b>Phase</b> BID DOCUMENTS  FULLY SPRINKLERED	<b>Project Title</b> CONSTRUCT NEW SPS <b>Location</b> Sioux Falls, SD. <b>Issue Date</b> 05/13/2025 <b>Checked</b> KLS <b>Drawn</b> AWU	<b>Project Number</b> 438-460 <b>Building Number</b> 5 <b>Drawing Number</b> ES099
--	--	---	--	---	--	---	--	---	---