

THIS DRAWING HAS BEEN PREPARED BASED ON INFORMATION PROVIDED TO ADS UNDER THE DIRECTION OF THE SITE DESIGN ENGINEER OR OTHER PROJECT REPRESENTATIVE. THE SITE DESIGN ENGINEER TO ENSURE THAT THE PRODUCTION (S) DESIGNED AND ASSOCIATED DETAILS MEET ALL APPLICABLE LOCAL, STATE, AND FEDERAL REQUIREMENTS. IT IS THE ULTIMATE RESPONSIBILITY OF THE SITE DESIGN ENGINEER TO ENSURE THAT THE PRODUCTION (S) DESIGNED AND ASSOCIATED DETAILS MEET ALL APPLICABLE LOCAL, STATE, AND FEDERAL REQUIREMENTS.

DATE: 06/22/20
DRAWN: NRR
CHECKED: JFR

PROJECT # S18961
VA PARKING LOT
STOX FALLS - SD

DATE: 07/13/20
NRR
DESCRIPTION: REVERSED SOUTH BED LAYOUT

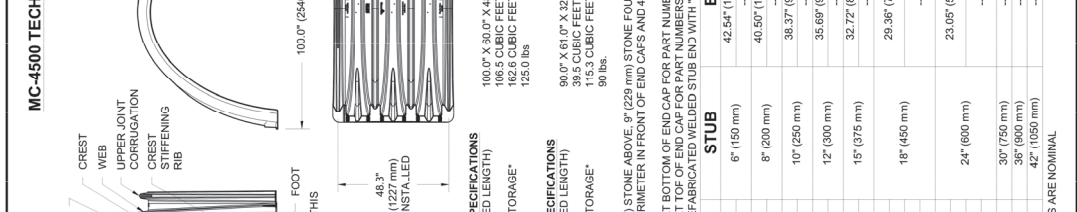
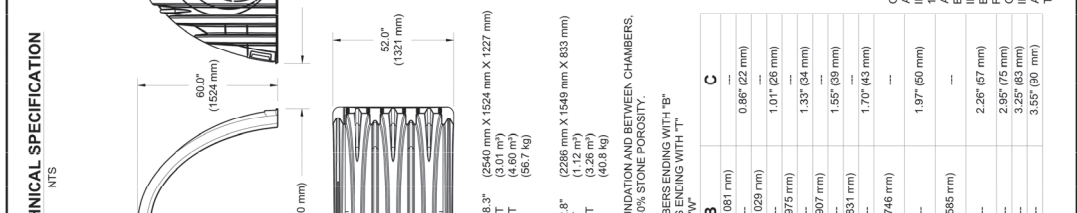
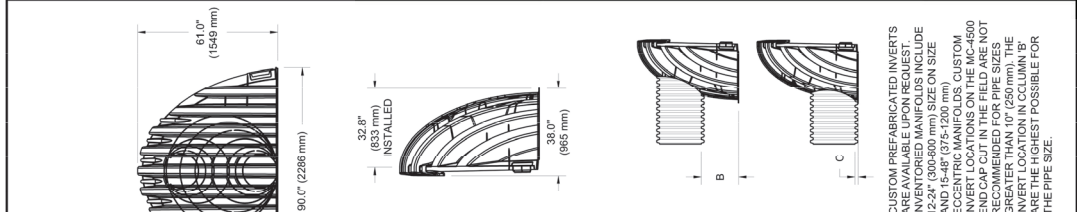
DATE: 08/22/20
NRR
DESCRIPTION: REVERSED SOUTH BED LAYOUT

DESIGNED BY: J. W. STORMECH
10000 N. HILL CT | COVINGTON, LA 70026
850-938-1888 | 850-292-9841 | WWW.STORMTECH.COM

StormTech
CORPORATION
10000 N. HILL CT | COVINGTON, LA 70026
850-938-1888 | 850-292-9841 | WWW.STORMTECH.COM

1640 TRUMAN BLVD
HILLIARD, OH 43026
DESIGNED BY: J. W. STORMECH
10000 N. HILL CT | COVINGTON, LA 70026
850-938-1888 | 850-292-9841 | WWW.STORMTECH.COM

7 OF 7
SHEET



NOMINAL CHAMBER SPECIFICATIONS

SIZE (W X H X INSTALLED LENGTH)
CHAMBER STORAGE
MINIMUM INSTALLED STORAGE*
WEIGHT (NOMINAL)

100.0" X 30.0" X 48.3"
(2540 mm X 1524 mm X 1227 mm)
166.5 CUBIC FEET (4.60 m³)
162.6 CUBIC FEET (4.60 m³)
125.0 lbs (56.7 kg)

NOMINAL END CAP SPECIFICATIONS

SIZE (W X H X INSTALLED LENGTH)
END CAP STORAGE
MINIMUM INSTALLED STORAGE*
WEIGHT (NOMINAL)

98.0" X 61.0" X 32.8"
(2286 mm X 1549 mm X 833 mm)
39.5 CUBIC FEET (1.12 m³)
15.3 CUBIC FEET (4.26 m³)
99 lbs (45.8 kg)

*ASSUMES 12" (305 mm) STONE ABOVE, 9" (229 mm) STONE FOUNDATION AND BETWEEN CHAMBERS, 12" (305 mm) STONE PERIMETER IN FRONT OF END CAPS AND 40% AND 40% STONE POROSITY.

PART #

PART #	STUB	B	C
MC4500IEPP06T	6" (150 mm)	42.54" (1081 mm)	0.86" (22 mm)
MC4500IEPP06B	6" (150 mm)	40.50" (1029 mm)	1.01" (26 mm)
MC4500IEPP08T	8" (200 mm)	38.37" (975 mm)	1.33" (34 mm)
MC4500IEPP10T	10" (250 mm)	35.68" (907 mm)	1.55" (39 mm)
MC4500IEPP12T	12" (300 mm)	32.72" (831 mm)	1.70" (43 mm)
MC4500IEPP15T	15" (375 mm)	29.38" (746 mm)	1.97" (50 mm)
MC4500IEPP18T	18" (450 mm)	23.05" (585 mm)	2.26" (57 mm)
MC4500IEPP24T	24" (600 mm)	39" (750 mm)	2.95" (75 mm)
MC4500IEPP28W	36" (900 mm)	36" (900 mm)	3.25" (83 mm)
MC4500IEPP32BW	42" (1050 mm)	42" (1050 mm)	3.55" (90 mm)

NOTE: ALL DIMENSIONS ARE NOMINAL

CUSTOM PREFABRICATED INSERTS ARE AVAILABLE UPON REQUEST. INVENTORIED MANIFOLDS INCLUDE 12-24" (300-600 mm) SIZE ON SIZE AND 15-48" (375-1200 mm) CUSTOM MANIFOLDS. CUSTOM INVERT LOCATIONS ON THE MC-4500 END CAP CUT IN THE FIELD ARE NOT RECOMMENDED FOR PIPE SIZES GREATER THAN 10" (250 mm). THE MAXIMUM INVERT DEPTH IN CC'S ARE THE HIGHEST POSSIBLE FOR THE PIPE SIZE.

NOTE: MANIFOLD STUB MUST BE LAID HORIZONTAL FOR A PROPER FIT IN END CAP OPENING.

NUMBER AND SIZE OF UNDERDRAINS PER SITE DESIGN ENGINEER
4" (100 mm) TYP FOR SC-310 & SC-160LP SYSTEMS
6" (150 mm) TYP FOR SC-740, DC-700, MC-3500 & MC-4500 SYSTEMS

ARCHITECT/ENGINEER OF RECORD
SES SPECIALIZED ENGINEERING SOLUTIONS
1800 N. 10th Street, Suite 200, Lincoln, NE 68502 | 402-234-6100
Lincoln, NE 68502 | 402-234-6100

CONSULTANT
CJH CONSULTANTS, INC.
1800 N. 10th Street, Suite 200, Lincoln, NE 68502 | 402-234-6100

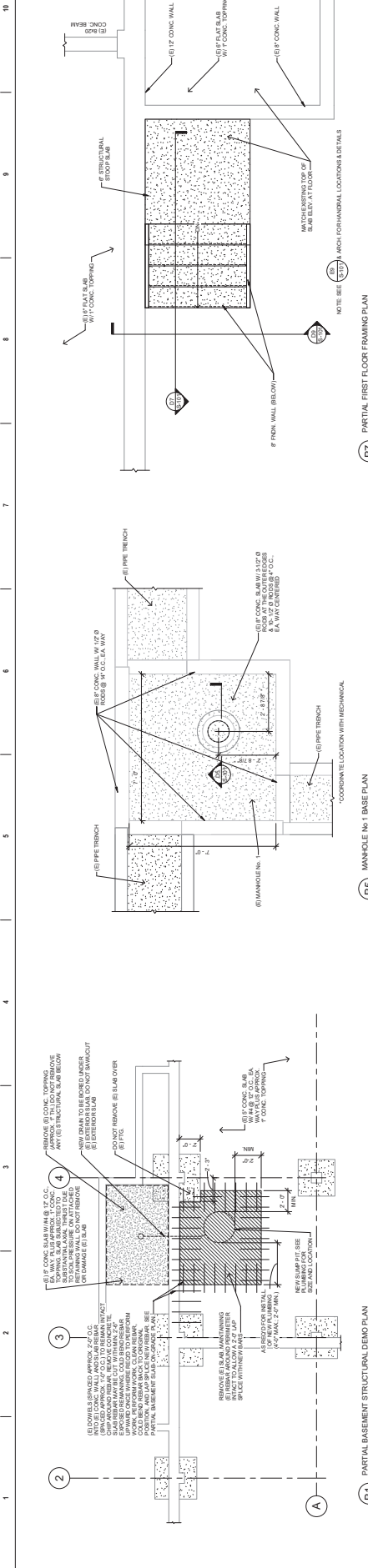
CONTRACTOR
Shaffer & Stevens
1800 N. 10th Street, Suite 200, Lincoln, NE 68502 | 402-234-6100

STAMP
Professional Engineer
J. W. STORMECH
No. 0000000000
Professional Engineer
J. W. STORMECH
No. 0000000000

Office of Construction and Facilities Management
U.S. Department of Veterans Affairs

Project Title: MITIGATE CAMPUS DRAINAGE
Project Number: 438-18-107
Drawing Number: C-138

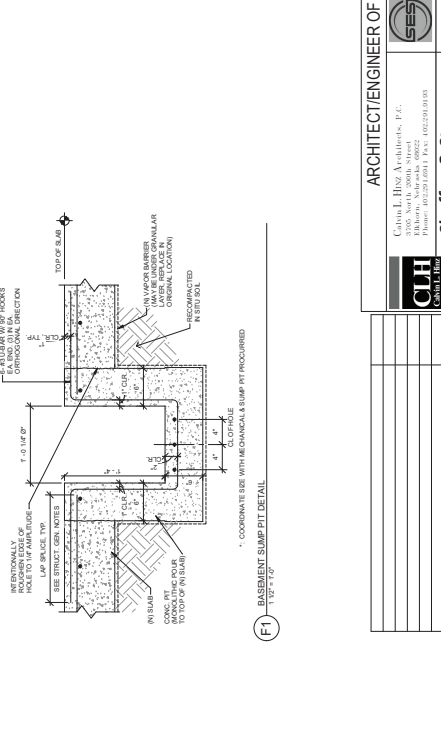
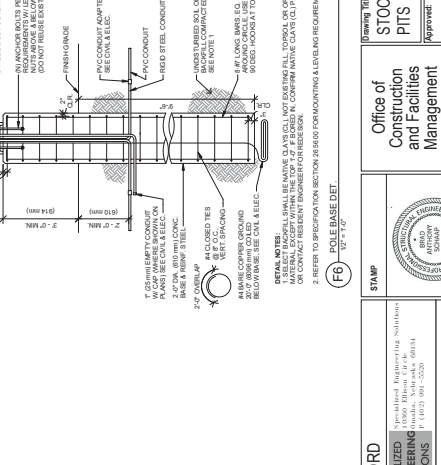
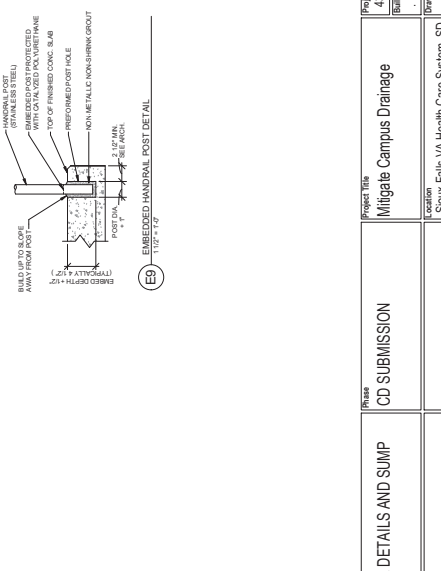
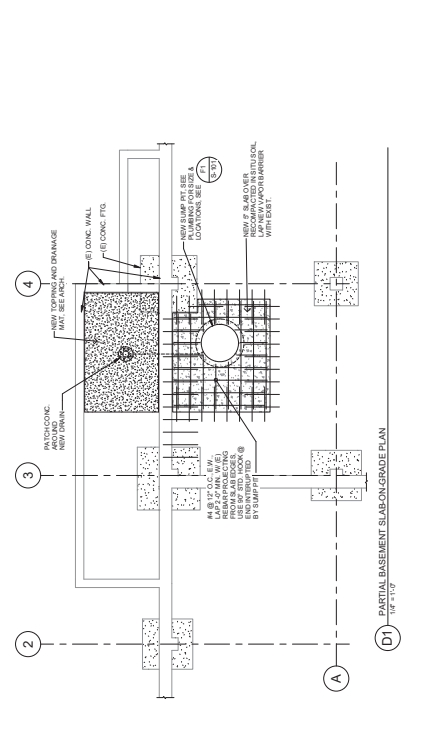
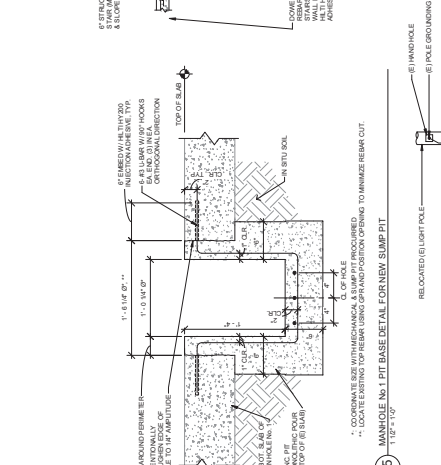
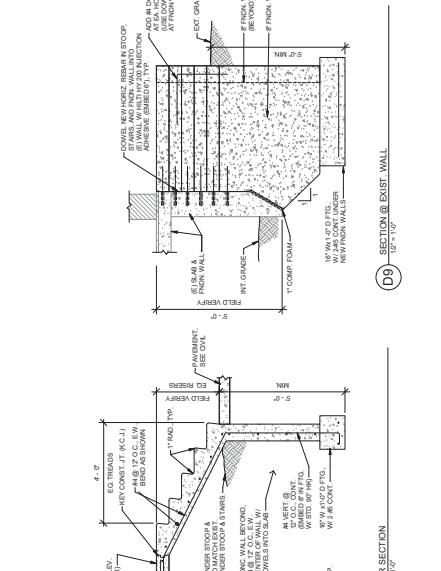
Issue Date: FEBRUARY 26, 2021
Checked: ETG
Drawn: RLB



67 PARTIAL FIRST FLOOR FRAMING PLAN
1/2" = 1'-0"

68 MANHOLE No. 1 BASE PLAN
1/2" = 1'-0"

69 PARTIAL BASEMENT STRUCTURAL DEMO PLAN
1/2" = 1'-0"



<p>PROJECT TITLE Mitigate Campus Drainage</p> <p>PROJECT NUMBER 438-18-107</p>		<p>DATE February 28, 2021</p> <p>SCALE AS SHOWN</p>	
<p>ISSUED FOR CD SUBMISSION</p>		<p>PROJECT LOCATION Scout Falls VA Health Care System, SD</p>	
<p>DESIGNED BY SES ENGINEERING SOLUTIONS</p>		<p>CHECKED BY BAS</p>	
<p>APPROVED BY Office of Construction and Facilities Management</p>		<p>DATE February 28, 2021</p>	
<p>STAMP SES ENGINEERING SOLUTIONS</p>		<p>U.S. Department of Veterans Affairs</p>	
<p>ARCHITECT/ENGINEER OF RECORD Shaffer & Stevens</p>		<p>PROJECT NUMBER S-101</p>	

