

**CONTROL INFO:**

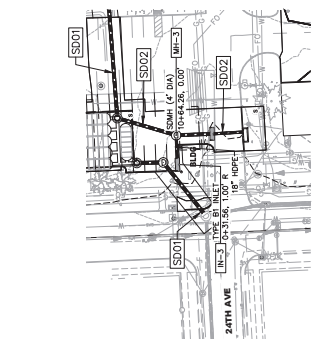
1. BASE OF BENCH MARK SOUTH DAKOTA STATE PLANE SOUTH ZONE.
2. BENCHMARK FOR THIS SITE IS LOCATED ON THE SOUTH SIDE OF 24TH AVE, APPROXIMATELY 100' EAST OF 5th GARFIELD AVE. (NAD83) (NAD83) (NAD83)

**LEGEND**

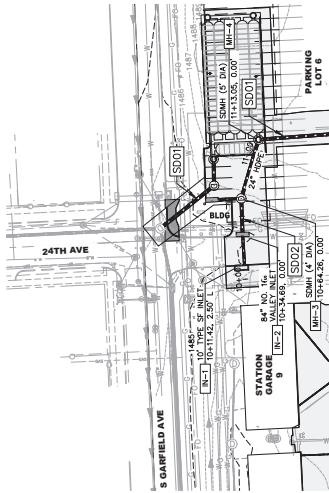
- ROW/PROPERTY LINE
- CENTRELINE
- PROPERTY BOUNDARY
- EASEMENT
- NEW WATER MAIN
- NEW WATER VALVE
- NEW FIRE HYDRANT
- NEW SANITARY SEWER MAIN
- NEW STORM DRAIN
- NEW STORM DRAIN INLET
- SANITARY SEWER MANHOLE NUMBER
- STORM DRAINAGE MANHOLE NUMBER
- EX. GAS MAIN
- EX. WATER MAIN
- EX. WATER VALVE
- EX. FIRE HYDRANT
- EX. SANITARY SEWER
- EX. STORM DRAIN
- EX. STORM DRAIN INLET
- EX. POWER POLE
- EX. UNDERGROUND ELECTRIC
- EX. UNDERGROUND TELEPHONE
- EX. FENCE



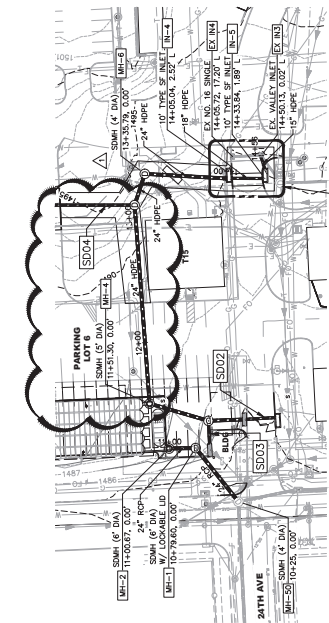
Utility Notification  
Center of South Dakota



**STORM 3**

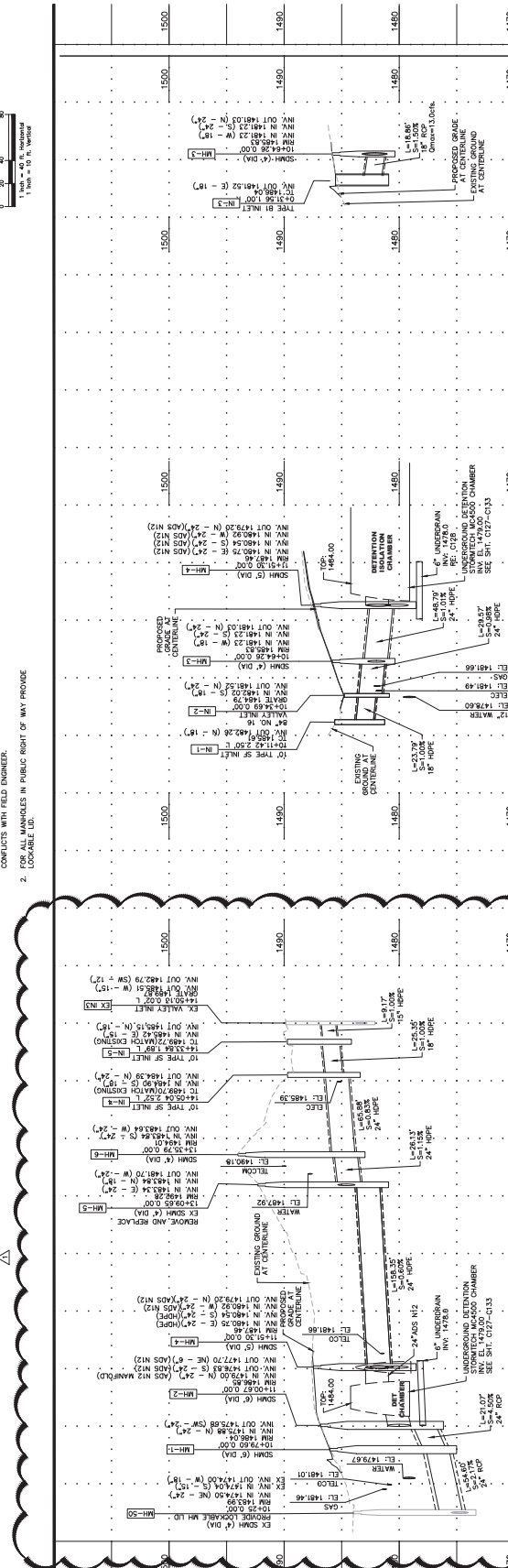


**STORM 2**

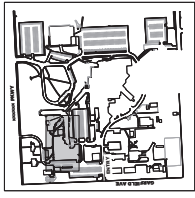


**STORM 1**

- NOTE:**
1. VERIFY ALL EXISTING UTILITIES BEFORE ANY CONSTRUCTION. VERIFY ALL UTILITIES PRIOR TO OBTAINING ANY PERMITS AND REPORTS.
  2. CONFLICTS WITH FIELD ENGINEER.
- FOR ALL MANHOLES IN PUBLIC RIGHT OF WAY PROVIDE:  
1. LOCABLE ID.



Project Title <b>MITIGATE CAMPUS DRAINAGE</b>		Project Number 438-18-107
Drawing Title <b>STORM PLAN AND PROFILE</b>		Sheet Number CD SUBMISSION
Office of Construction and Facilities Management		Approved Project Director
ARCHITECT/ENGINEER OF RECORD <b>SES ENGINEERING SOLUTIONS</b>		VA U.S. Department of Veterans Affairs
<b>Calibre</b>		VA U.S. Department of Veterans Affairs
<b>Shaffer &amp; Stevens</b>		VA U.S. Department of Veterans Affairs
CONSULTANT <b>CUH CONSULTANTS</b>		VA U.S. Department of Veterans Affairs
DATE 07/05/2021		DATE 07/05/2021
DRAWING NUMBER		DRAWING NUMBER
PROJECT NUMBER		PROJECT NUMBER
SHEET NUMBER		SHEET NUMBER
SCALE		SCALE
DATE		DATE
PROJECT NUMBER		PROJECT NUMBER
SHEET NUMBER		SHEET NUMBER
SCALE		SCALE
DATE		DATE



**CONTROL INFO:**

1. BASE OF BENCH MARK SOUTH DAKOTA STATE PLANE SOUTH ZONE.
2. BENCHMARK FOR THIS SITE IS LOCATED ON THE SOUTH SIDE OF WEST 10TH STREET, APPROXIMATELY 100' EAST OF S. GARFIELD AVE. (NEAR INTERSECTION OF WEST 10TH STREET AND S. GARFIELD AVE.)

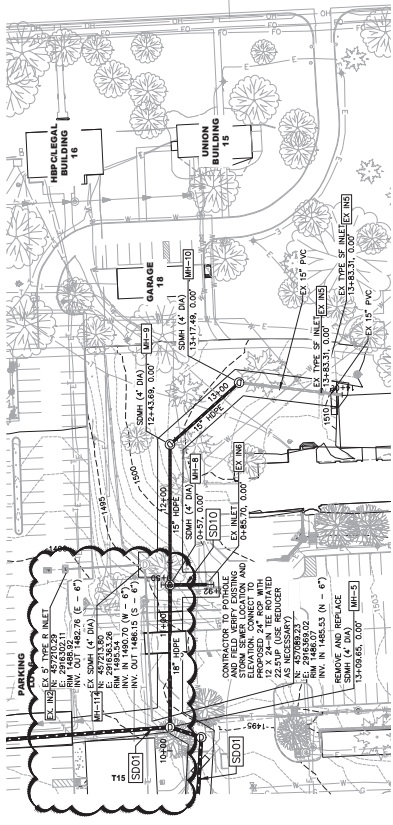
PROPOSED SANITATION: 18" S.M. (N.A.S.)

**LEGEND**

- ROW/PROPERTY LINE
- CENTERLINE
- PROPERTY BOUNDARY
- ELEMENT
- NEW WATER MAIN
- NEW WATER VALVE
- NEW FIRE HYDRANT
- NEW SANITARY SEWER MAIN
- NEW STORM DRAIN
- NEW STORM DRAIN INLET
- SANITARY SEWER MANHOLE NUMBER
- STORM DRAINAGE MANHOLE NUMBER
- EX. GAS MAIN
- EX. WATER MAIN
- EX. WATER VALVE
- EX. FIRE HYDRANT
- EX. SANITARY SEWER
- EX. STORM DRAIN
- EX. STORM DRAIN INLET
- EX. POWER POLE
- EX. UNDERGROUND ELECTRIC
- EX. UNDERGROUND TELEPHONE
- EX. FENCE

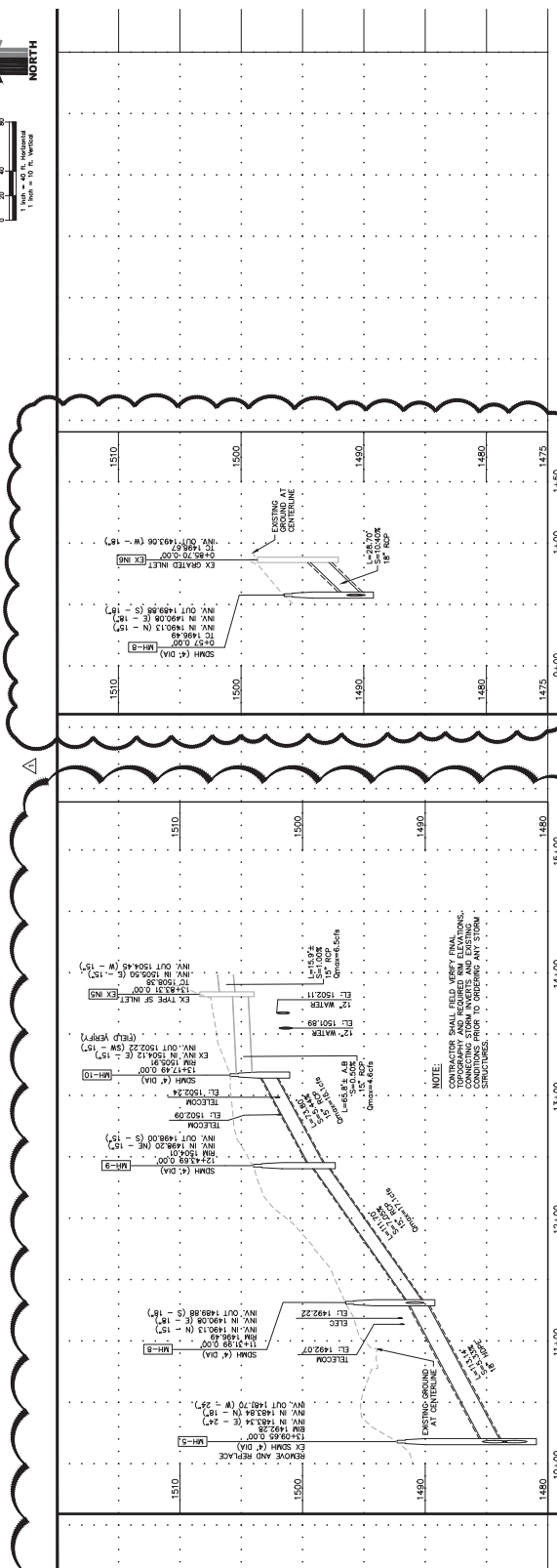
**811** CALL BEFORE YOU DIG OR 811  
 1-800-781-7474  
 Utility Notification  
 Center of South Dakota

Project Name	MITTGATE CAMPUS DRAINAGE
Project Number	438-18-107
Issue	CD SUBMISSION
Approval	Approved Project Director
Section	Storm Drain and Profile
Client	Office of Construction and Facilities Management
Prepared By	VA U.S. Department of Veterans Affairs
Checked By	
Date	FEBRUARY 26, 2021
ETG	ETG
FLB	FLB
Drawn Number	C-123



**STORM 4**

**STORM 10**



NOTE:  
 CONTRACTOR SHALL FIELD VERIFY FINAL TOPOGRAPHY AND REQUIRED RM ELEVATIONS. CONDITIONS PRIOR TO ORDER ANY STORM STRUCTURES.

**ARCHITECT/ENGINEER OF RECORD**  
**Shaffer & Stevens**  
 3000 W. 10th Street, Suite 200  
 Rapid City, SD 57701  
 Phone: 605.342.7000 Fax: 605.342.7009

**CONSULTANT**  
**CUH**  
 CONSULTANTS  
 3000 W. 10th Street, Suite 200  
 Rapid City, SD 57701  
 Phone: 605.342.7000 Fax: 605.342.7009

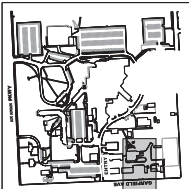
**ARCHITECT/ENGINEER OF RECORD**  
**SES**  
 SPECIALIZED ENGINEERING SOLUTIONS  
 3000 W. 10th Street, Suite 200  
 Rapid City, SD 57701  
 Phone: 605.342.7000 Fax: 605.342.7009

**Calibre**  
 ENGINEERING  
 3000 W. 10th Street, Suite 200  
 Rapid City, SD 57701  
 Phone: 605.342.7000 Fax: 605.342.7009

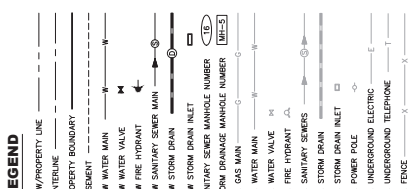
**VA U.S. Department of Veterans Affairs**

Office of Construction and Facilities Management  
 Approved Project Director

Revision	Date



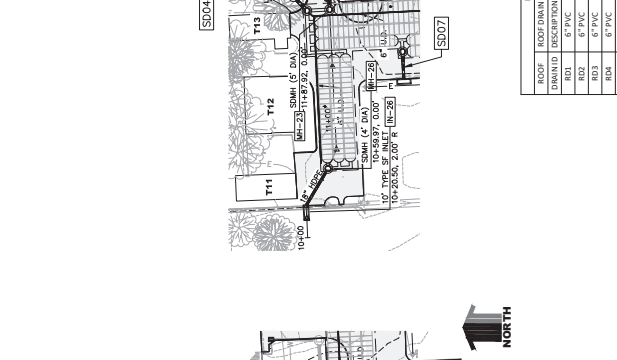
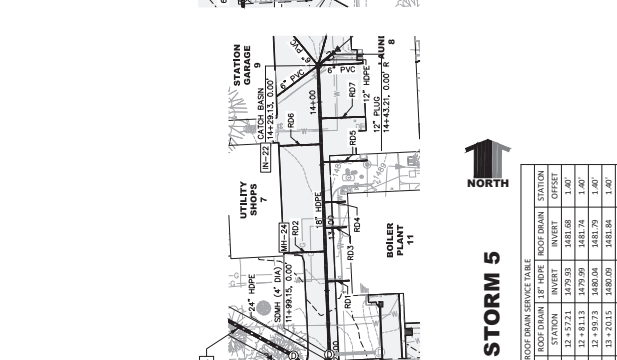
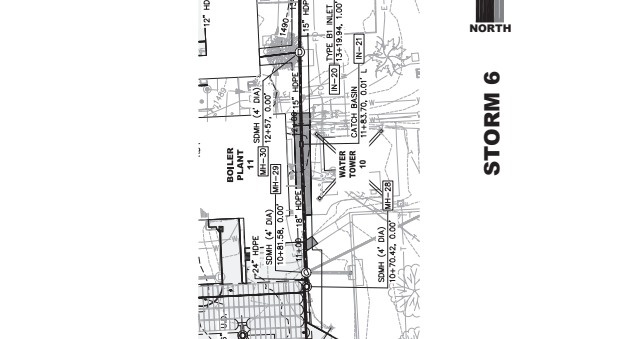
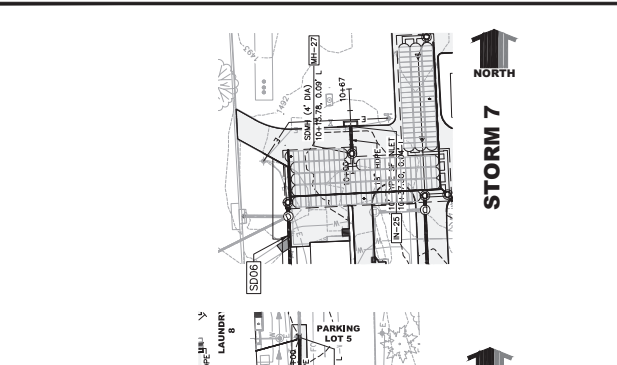
**BENCHMARK:**



CALL BEFORE YOU DIG  
**811**

1-800-781-7474  
Utility Notification  
Center of South Dakota

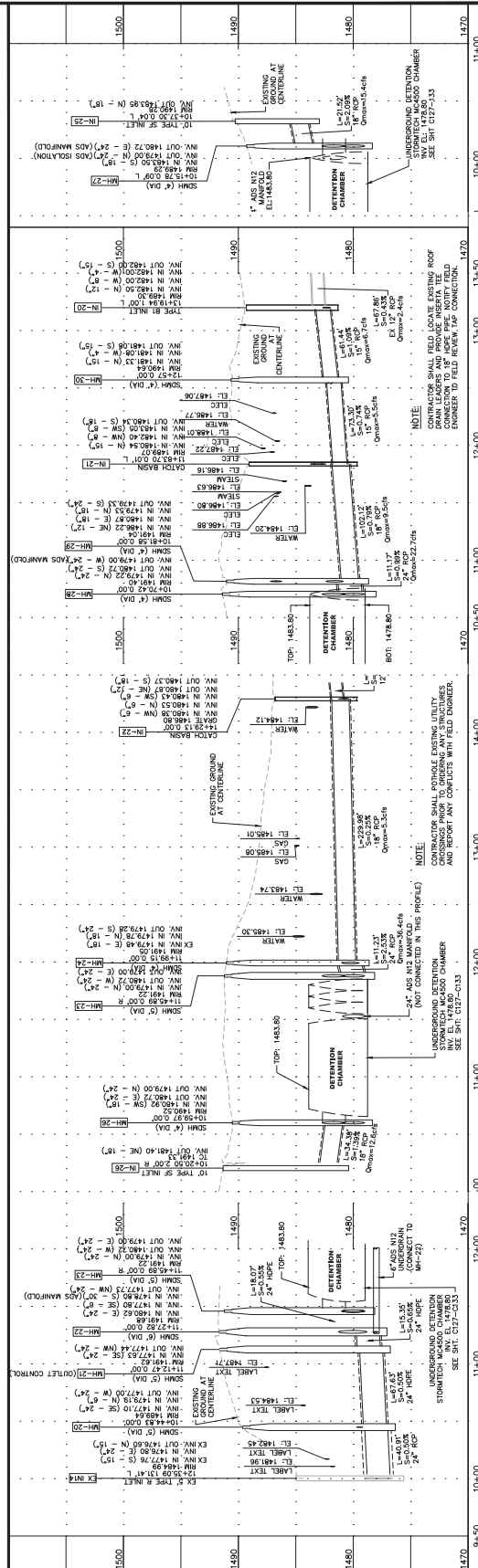
Project Number <b>438-18-107</b>	Planning Number <b>438-18-107</b>
Contractor <b>Stauff &amp; Stevens</b>	Planning Number <b>C-124</b>
Approval Date <b>FEBRUARY 26, 2021</b>	ETG <b>ETG</b>



ROOT DRAIN SERVICE TABLE

ROOT	ROOT DRAIN	1" HOPE	ROOT DRAIN	STATION	INVERT
R01	6" PVC	12+522.1	1279.30	1481.68	1.40'
R02	6" PVC	12+411.3	1279.50	1481.74	1.40'
R03	6" PVC	12+392.7	1480.04	1481.79	1.40'
R04	6" PVC	12+261.5	1480.09	1481.84	1.40'
R05	6" PVC	12+521.3	1480.37	1481.91	1.40'
R06	6" PVC	12+521.3	1480.38	1481.92	1.40'
R07	6" PVC	12+462.7	1480.26	1481.91	1.40'

NOTES:  
1. 6" SDP 36 PVC ROOF DRAIN SHALL CONNECT TO 18" ABS N-12 STORM SEWER WITH A RESERVA TEE PIPE CONNECTION, USE PART NUMBER 2618393-2A1Z.  
2. ALL NEW ROOF DRAINS SHALL BE 6" N-12 SDP36 PVC PIPE.



**Phase**  
CD SUBMISSION

**Project Title**  
MITIGATE CAMPUS DRAINAGE

**CD SUBMISSION**

**STORM PLAN AND PROFILE**

**ARCHITECT/ENGINEER OF RECORD STAMP**  
SES ENGINEERING SOLUTIONS

**Office of Construction and Facilities Management**  
U.S. Department of Veterans Affairs

**Calibre**  
CALIBRE ENGINEERING ARCHITECTURE

**Shaffer & Stevens**  
CONSULTANT

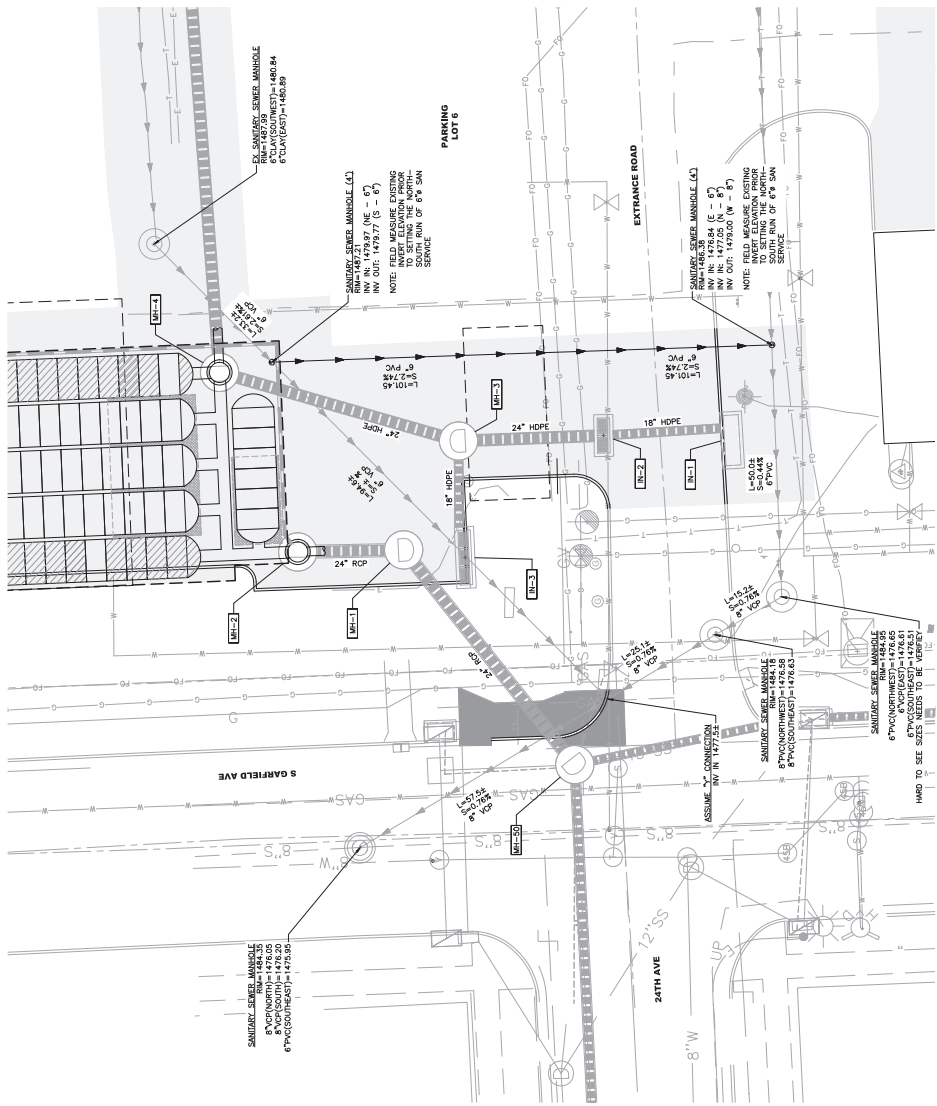
**Calibre Engineering Architects, P.C.**  
1810 W. 5th Street, Suite 100, Rapid City, SD 57701  
P: 605-261-5100 F: 605-261-6031  
www.calibre-engineers.com

**Stauff & Stevens**  
1007 S. 17th Street, Rapid City, SD 57701  
P: 605-261-6000 F: 605-261-6031  
www.stauff-stevens.com

**CONTRACTOR**  
Stauff & Stevens

**DATE:**

**REVISIONS:**

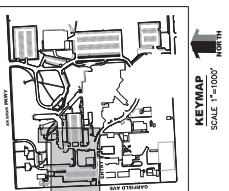


**CONTROL INFO:**

- BASE OF RECORD: CITY OF SIOUX FALLS, SOUTH DAKOTA STATE PLANS SOUTH ZONE.
- BENCHMARK FOR THIS SITE IS 6724M(SOUTHWEST)=1460.84 LOCATED ON THE SOUTH SIDE OF GARFIELD AVENUE APPROXIMATELY 100' EAST OF 5. CORNER AXEL. HORIZONTAL DATUM: NAD83 (NA83). VERTICAL DATUM: MSLM (NA83).

- LEGEND**
- ROW/PROPERTY LINE
  - CENTERLINE
  - PROPERTY BOUNDARY
  - EASEMENT
  - NEW WATER MAIN
  - NEW WATER VALVE
  - NEW FIRE HYDRANT
  - NEW SANITARY SEWER MAIN
  - NEW STORM DRAIN
  - NEW STORM DRAIN INLET
  - SANITARY SEWER MANHOLE NUMBER
  - STORM DRAINAGE MANHOLE NUMBER
  - EX. GAS MAIN
  - EX. WATER MAIN
  - EX. WATER VALVE
  - EX. FIRE HYDRANT
  - EX. SANITARY SEWER
  - EX. STORM DRAIN
  - EX. STORM DRAIN INLET
  - EX. POWER POLE
  - EX. UNDERGROUND ELECTRIC
  - EX. UNDERGROUND TELEPHONE
  - EX. FENCE

CALL BEFORE YOU DIG  
**811**  
 OR  
 1-800-781-7474  
 Utility Notification  
 Center of South Dakota



<b>ARCHITECT/ENGINEER OF RECORD</b>  <b>Calibre</b> <small>Specialized Engineering Solutions</small> 1400 W. 10th St., Suite 100 Sioux Falls, SD 57105 P (605) 991-2529 F (605) 991-2528 L (605) 991-2529 E info@calibre-engineering.com W www.calibre-engineering.com	<b>CONSULTANT</b>  <b>Shaffer &amp; Stevens</b> 1000 W. 10th St., Suite 100 Sioux Falls, SD 57105 P (605) 991-2529 F (605) 991-2528 L (605) 991-2529 E info@shaffer-stevens.com W www.shaffer-stevens.com	<b>STAMP</b> 	<b>Office of Construction and Facilities Management</b> 	<b>Project Title</b> MITIGATE CAMPUS DRAINAGE	<b>Project Number</b> 438-18-107
				<b>Phase</b> CD SUBMISSION	<b>Planning Number</b> Planning Number
<b>Sanitary Sewer Plan</b> Approved Project Director		<b>Sheet Title</b> Sanitary Sewer Plan	<b>Sheet Number</b> C-125	<b>Revision</b> 1 DATE	<b>Revision</b> 1 DATE





<div data-bbox="227 105 487 525"> <p>This drawing shows a cross-section of a concrete keyway. The top surface is labeled "Top of pavement" and is 15 inches wide. The keyway depth is 4 inches. The concrete on either side of the keyway is 12 inches wide. The drawing is labeled "Keyway Longitudinal Joint Without Tie Bars".</p> </div>	<div data-bbox="227 630 406 945"> <p>This drawing shows a cross-section of a concrete keyway with tie bars. The top surface is labeled "Top of pavement" and is 15 inches wide. The keyway depth is 4 inches. The concrete on either side is 12 inches wide. Tie bars are shown at the bottom of the keyway. The drawing is labeled "Keyway Longitudinal Joint With Tie Bars".</p> </div>	<div data-bbox="227 945 406 1155"> <p>This drawing shows a cross-section of a sawed longitudinal joint. The top surface is labeled "Top of pavement" and is 15 inches wide. The joint is 15 inches deep. The drawing is labeled "Sawed Longitudinal Joint".</p> </div>	<div data-bbox="227 1155 406 1365"> <p>This drawing shows a cross-section of a transverse construction joint with tie bars. The top surface is labeled "Top of pavement" and is 4 feet wide. The joint is 15 inches deep. Tie bars are shown at the bottom of the joint. The drawing is labeled "Transverse Construction Joint With Tie Bars".</p> </div>	<div data-bbox="227 1365 406 1575"> <p>This drawing shows a cross-section of a transverse construction joint without tie bars. The top surface is labeled "Top of slab" and is 4 feet wide. The joint is 15 inches deep. The drawing is labeled "Transverse Construction Joint Without Tie Bars".</p> </div>
--	---	--	---	--

City of Snow Falls Public Works  
 Project Number: 380.04  
 Specification Reference: No. 380

Revision: September 2012

Project Title: MITIGATE CAMPUS DRAINAGE  
 Project Number: 438-18-107

Phase: CD SUBMISSION

Office of Construction and Facilities Management  
 Approved Project Director  
 U.S. Department of Veterans Affairs

Project Title: DETAILS

Project Title: MITIGATE CAMPUS DRAINAGE  
 Project Number: 438-18-107

Phase: CD SUBMISSION

Office of Construction and Facilities Management  
 Approved Project Director  
 U.S. Department of Veterans Affairs

Project Title: DETAILS

Project Title: MITIGATE CAMPUS DRAINAGE  
 Project Number: 438-18-107

Phase: CD SUBMISSION

Office of Construction and Facilities Management  
 Approved Project Director  
 U.S. Department of Veterans Affairs

Project Title: DETAILS

Project Title: MITIGATE CAMPUS DRAINAGE  
 Project Number: 438-18-107

City of Snow Falls Public Works  
 Project Number: 380.06  
 Specification Reference: No. 380

Revision: September 2012

Project Title: MITIGATE CAMPUS DRAINAGE  
 Project Number: 438-18-107

Phase: CD SUBMISSION

Office of Construction and Facilities Management  
 Approved Project Director  
 U.S. Department of Veterans Affairs

Project Title: DETAILS

Project Title: MITIGATE CAMPUS DRAINAGE  
 Project Number: 438-18-107

Phase: CD SUBMISSION

Office of Construction and Facilities Management  
 Approved Project Director  
 U.S. Department of Veterans Affairs

Project Title: DETAILS

Project Title: MITIGATE CAMPUS DRAINAGE  
 Project Number: 438-18-107

Phase: CD SUBMISSION

Office of Construction and Facilities Management  
 Approved Project Director  
 U.S. Department of Veterans Affairs

Project Title: DETAILS

Project Title: MITIGATE CAMPUS DRAINAGE  
 Project Number: 438-18-107

City of Snow Falls Public Works  
 Project Number: 380.05  
 Specification Reference: No. 380

Revision: September 2012

Project Title: MITIGATE CAMPUS DRAINAGE  
 Project Number: 438-18-107

Phase: CD SUBMISSION

Office of Construction and Facilities Management  
 Approved Project Director  
 U.S. Department of Veterans Affairs

Project Title: DETAILS

Project Title: MITIGATE CAMPUS DRAINAGE  
 Project Number: 438-18-107

Phase: CD SUBMISSION

Office of Construction and Facilities Management  
 Approved Project Director  
 U.S. Department of Veterans Affairs

Project Title: DETAILS

Project Title: MITIGATE CAMPUS DRAINAGE  
 Project Number: 438-18-107

Phase: CD SUBMISSION

Office of Construction and Facilities Management  
 Approved Project Director  
 U.S. Department of Veterans Affairs

Project Title: DETAILS

Project Title: MITIGATE CAMPUS DRAINAGE  
 Project Number: 438-18-107

City of Snow Falls Public Works  
 Project Number: 380.07  
 Specification Reference: No. 380

Revision: September 2012

Project Title: MITIGATE CAMPUS DRAINAGE  
 Project Number: 438-18-107

Phase: CD SUBMISSION

Office of Construction and Facilities Management  
 Approved Project Director  
 U.S. Department of Veterans Affairs

Project Title: DETAILS

Project Title: MITIGATE CAMPUS DRAINAGE  
 Project Number: 438-18-107

Phase: CD SUBMISSION

Office of Construction and Facilities Management  
 Approved Project Director  
 U.S. Department of Veterans Affairs

Project Title: DETAILS

Project Title: MITIGATE CAMPUS DRAINAGE  
 Project Number: 438-18-107

Phase: CD SUBMISSION

Office of Construction and Facilities Management  
 Approved Project Director  
 U.S. Department of Veterans Affairs

Project Title: DETAILS

Project Title: MITIGATE CAMPUS DRAINAGE  
 Project Number: 438-18-107

City of Snow Falls Public Works  
 Project Number: 380.08  
 Specification Reference: No. 380

Revision: September 2012

Project Title: MITIGATE CAMPUS DRAINAGE  
 Project Number: 438-18-107

Phase: CD SUBMISSION

Office of Construction and Facilities Management  
 Approved Project Director  
 U.S. Department of Veterans Affairs

Project Title: DETAILS

Project Title: MITIGATE CAMPUS DRAINAGE  
 Project Number: 438-18-107

Phase: CD SUBMISSION

Office of Construction and Facilities Management  
 Approved Project Director  
 U.S. Department of Veterans Affairs

Project Title: DETAILS

Project Title: MITIGATE CAMPUS DRAINAGE  
 Project Number: 438-18-107

Phase: CD SUBMISSION

Office of Construction and Facilities Management  
 Approved Project Director  
 U.S. Department of Veterans Affairs

Project Title: DETAILS

Project Title: MITIGATE CAMPUS DRAINAGE  
 Project Number: 438-18-107

1

2

3

4

5

6

7

8

9

10

<b>CITY OF WASHINGTON PUBLIC WORKS</b> <small>Division of Construction Services</small>	Revision: November 2020	Plate Number <b>380.10</b>
<b>Manhole Structure Joining</b>	Specification Reference No. 380	Revision: September 2012 Plate Number <b>380.14</b>

**General Notes:**  
 1. Known joints to be used in new construction of manhole structures shall be cast in place with 4x4 bars. Detail 380.27.  
 2. If manhole reinforcement is done in an existing construction of manhole structures, reinforcement bar shall be used as shown in detail 380.11.  
 3. Keyways for bars shall be used in new construction of manhole structures. Keyways shall be cast in place with 4x4 bars. Detail 380.27.  
 4. Manhole structures shall be cast in place with 4x4 bars. Detail 380.27.  
 5. Manhole structures shall be cast in place with 4x4 bars. Detail 380.27.

1

2

3

4

5

6

7

8

9

10

<b>CITY OF WASHINGTON PUBLIC WORKS</b> <small>Division of Construction Services</small>	Revision: May 2020	Plate Number <b>380.11</b>
<b>Full Depth Patch</b>	Specification Reference No. 380	Revision: September 2012 Plate Number <b>380.13</b>

**\*THIS DETAIL HAS BEEN EDITED BY CALBRE ENGINEERING 12/21/2020**

**General Notes:**  
 1. Full depth patch shall be 18 inches wide and 12 inches deep.  
 2. Patch shall be placed in existing pavement structure.  
 3. Patch shall be compacted to 98% relative density.  
 4. Patch shall be finished to match existing pavement.

1

2

3

4

5

6

7

8

9

10

<b>CITY OF WASHINGTON PUBLIC WORKS</b> <small>Division of Construction Services</small>	Revision: September 2012	Plate Number <b>380.13</b>
<b>Construction Joint Adjacent to Existing Pavement</b>	Specification Reference No. 380	Revision: September 2012 Plate Number <b>380.14</b>

**General Notes:**  
 The down bar is to be embedded a minimum depth of 8 inches into the existing pavement by cutting an epoxy resin groove.  
 The remaining 8" of down bar shall be placed.

1

2

3

4

5

6

7

8

9

10

<b>CITY OF WASHINGTON PUBLIC WORKS</b> <small>Division of Construction Services</small>	Revision: September 2012	Plate Number <b>380.14</b>
<b>T-bar Installation in Concrete Joint</b>	Specification Reference No. 380	Revision: September 2012 Plate Number <b>380.14</b>

**General Notes:**  
 The down bar is to be embedded a minimum depth of 8 inches into the existing pavement by cutting an epoxy resin groove.  
 The remaining 8" of down bar shall be placed.

1

2

3

4

5

6

7

8

9

10

<b>CITY OF WASHINGTON PUBLIC WORKS</b> <small>Division of Construction Services</small>	Revision: March 2014	Plate Number <b>400.D4</b>
<b>Non-Perforated Pipe As Sump Pump Collector</b>	Specification Reference Special	Revision: May 2019 Plate Number <b>400.09</b>

**Material:**  
 1. Non-perforated pipe shall be made of heavy-duty polyethylene (HDPE) or non-perforated PVC pipe meeting manufacturer's specifications.  
 2. Annual quantity shall be installed at the end of collector pipes discharging directly into a public conveyance.  
 3. Annual quantity shall be installed at the end of collector pipes discharging directly into a public conveyance.

Type of Material	Grate	Grate	Pipe	Building
(1/2 Section)	(1/2 Section)	(1/2 Section)	(1/2 Section)	(1/2 Section)
6	30	18	3.33	0.20
8	30	18	3.75	0.45
10	30	18	4.50	0.71

1

2

3

4

5

6

7

8

9

10

<b>CITY OF WASHINGTON PUBLIC WORKS</b> <small>Division of Construction Services</small>	Revision: May 2019	Plate Number <b>400.09</b>
<b>Bedding and Backfill for 12\"/&gt; </b>	Specification Reference Special	Revision: May 2019 Plate Number <b>400.10</b>

**Material:**  
 Class 1: Crushed stone, 100% passing 1.18" sieve  
 Class 2: Crushed stone, 100% passing 4.75" sieve  
 Class 3: Crushed stone, 100% passing 9.5" sieve  
 Class 4: Crushed stone, 100% passing 19.0" sieve

**Quantity Estimate Table:**

Excavated (1) Material	(2) Class 1	(3) Class 2	(4) Class 3	(5) Class 4
12"	0.28	0.28	0.28	0.28
18"	0.42	0.42	0.42	0.42
24"	0.56	0.56	0.56	0.56
30"	0.70	0.70	0.70	0.70

1

2

3

4

5

6

7

8

9

10

<b>CITY OF WASHINGTON PUBLIC WORKS</b> <small>Division of Construction Services</small>	Revision: May 2019	Plate Number <b>400.10</b>
<b>Bedding and Backfill for 12\"/&gt; </b>	Specification Reference Special	Revision: May 2019 Plate Number <b>400.10</b>

**Material:**  
 Class 1: Crushed stone, 100% passing 1.18" sieve  
 Class 2: Crushed stone, 100% passing 4.75" sieve  
 Class 3: Crushed stone, 100% passing 9.5" sieve  
 Class 4: Crushed stone, 100% passing 19.0" sieve

**Quantity Estimate Table:**

Excavated (1) Material	(2) Class 1	(3) Class 2	(4) Class 3	(5) Class 4
12"	0.28	0.28	0.28	0.28
18"	0.42	0.42	0.42	0.42
24"	0.56	0.56	0.56	0.56
30"	0.70	0.70	0.70	0.70

1

2

3

4

5

6

7

8

9

10

<b>CITY OF WASHINGTON PUBLIC WORKS</b> <small>Division of Construction Services</small>	Revision: May 2019	Plate Number <b>400.10</b>
<b>CD SUBMISSION</b>	Specification Reference Special	Revision: May 2019 Plate Number <b>400.10</b>

**General Notes:**  
 1. CD SUBMISSION shall be installed in existing pavement structure.  
 2. CD SUBMISSION shall be compacted to 98% relative density.  
 3. CD SUBMISSION shall be finished to match existing pavement.

1

2

3

4

5

6

7

8

9

10

<b>CITY OF WASHINGTON PUBLIC WORKS</b> <small>Division of Construction Services</small>	Revision: May 2019	Plate Number <b>400.09</b>
<b>ARCHITECT/ENGINEER OF RECORD</b>	Specification Reference Special	Revision: May 2019 Plate Number <b>400.09</b>

1

2

3

4

5

6

7

8

9

10

<b>CITY OF WASHINGTON PUBLIC WORKS</b> <small>Division of Construction Services</small>	Revision: May 2019	Plate Number <b>400.09</b>
<b>Office of Construction and Facilities Management</b>	Specification Reference Special	Revision: May 2019 Plate Number <b>400.09</b>

1

2

3

4

5

6

7

8

9

10

<b>CITY OF WASHINGTON PUBLIC WORKS</b> <small>Division of Construction Services</small>	Revision: May 2019	Plate Number <b>400.10</b>
<b>DETAILS</b>	Specification Reference Special	Revision: May 2019 Plate Number <b>400.10</b>

1

2

3

4

5

6

7

8

9

10

<b>CITY OF WASHINGTON PUBLIC WORKS</b> <small>Division of Construction Services</small>	Revision: May 2021	Plate Number <b>C-127</b>
<b>MITIGATE CAMPUS DRAINAGE</b>	Specification Reference Special	Revision: May 2021 Plate Number <b>C-127</b>

**CONSULTANT**

**Calibre**  
 Calibre Engineering, Inc.  
 1800 North 20th Street, Suite 200  
 Arlington, VA 22209  
 Phone: (703) 455-2000 Fax: (703) 455-2009

**ARCHITECT/ENGINEER OF RECORD**

**SES ENGINEERING SOLUTIONS**  
 1800 North 20th Street, Suite 200  
 Arlington, VA 22209  
 Phone: (703) 455-2000 Fax: (703) 455-2009

**Office of Construction and Facilities Management**

**U.S. Department of Veterans Affairs**

**CD SUBMISSION**

**MITIGATE CAMPUS DRAINAGE**

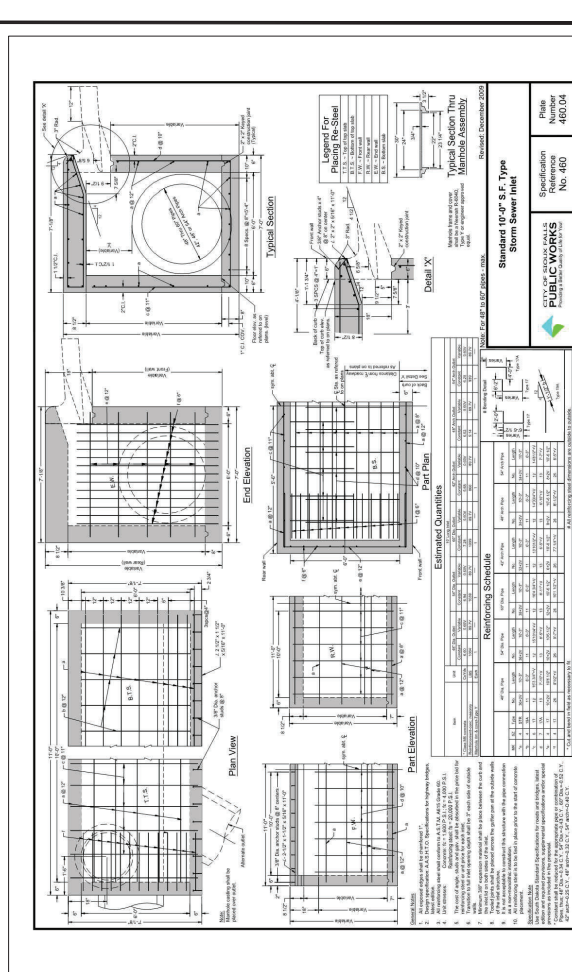
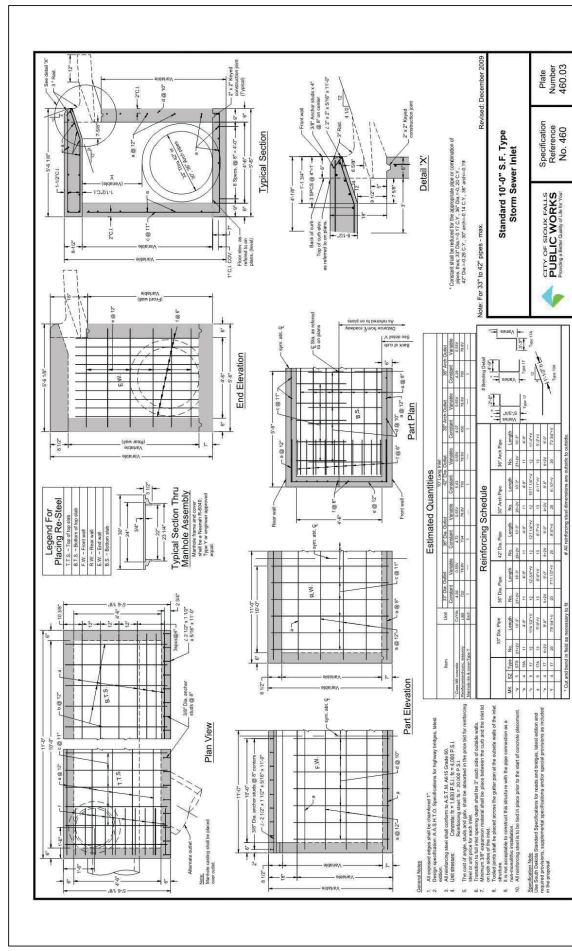
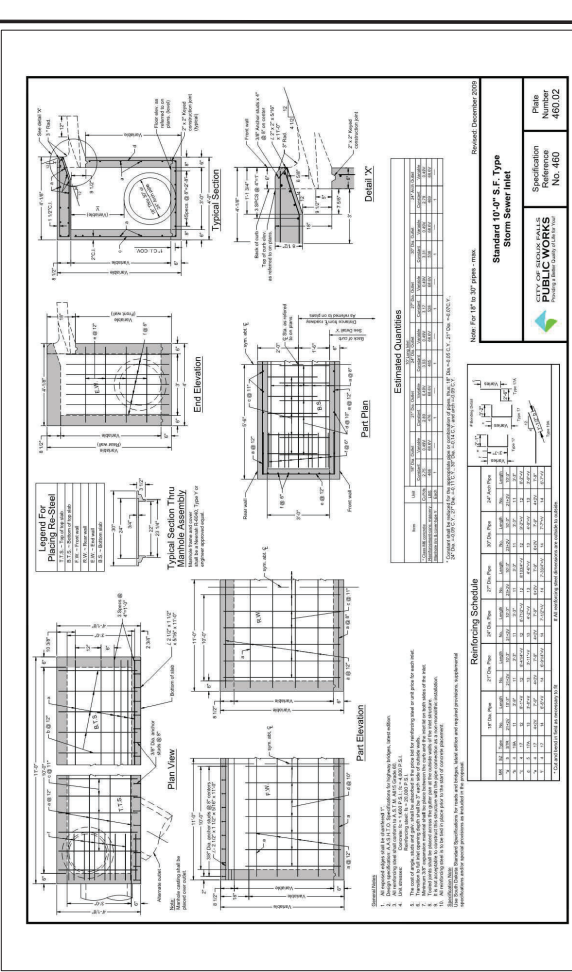
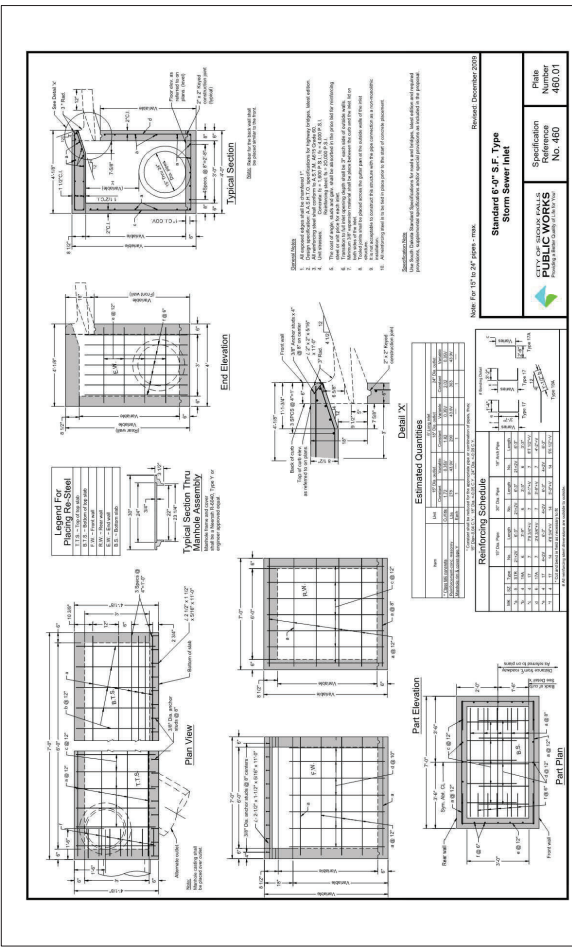
**Project Number: 438-18-107**

**Revision: FEBRUARY 26, 2021**

**Drawn: RLB**

**Checked: ETG**

**Approved: Project Director**



**ARCHITECT/ENGINEER OF RECORD**

SES ENGINEERING SOLUTIONS  
 1000 14th St, Suite 1000  
 St. Paul, MN 55102-3229  
 Phone: (612) 991-2529

**Calibre**  
 Calibre Engineering & Construction  
 1000 14th St, Suite 1000  
 St. Paul, MN 55102-3229  
 Phone: (612) 991-2529

**CONSULTANT**

CUH CONSULTANTS  
 1000 14th St, Suite 1000  
 St. Paul, MN 55102-3229  
 Phone: (612) 991-2529

**Shaffer & Stevens**  
 1000 14th St, Suite 1000  
 St. Paul, MN 55102-3229  
 Phone: (612) 991-2529

DATE: \_\_\_\_\_

**STAMP**

Office of Construction and Facilities Management  
 U.S. Department of Veterans Affairs

Approved Project Director

**Project Title**  
MITIGATE CAMPUS DRAINAGE

**Project Number**  
438-18-107

**Planing Number**  
C-128

**Phase**  
CD SUBMISSION

**Revision**  
0



