

**CONTROL INFO:**

1. BASES OF RECORDING: COUNTY OF DAKOTA STATE PLANE SOUTH ZONE.
2. BENCHMARK FOR THIS SITE IS A CONCRETE MONUMENT BENCHMARK LOCATED ON THE SOUTH SIDE OF GARFIELD AVENUE, APPROXIMATELY 100' EAST OF THE INTERSECTION WITH W 26TH STREET. MONUMENT IDENTIFICATION: TMSKLM (NAD83).

**KEYNOTES**

1. LOCATION OF THE SANITARY ELEVATION WITH GRADE ENGINEER REFLECTED WITH THIS PROJECT WILL BE REFLECTED WITH THIS PROJECT. SITE: STELLEBANPAK.COM 200.836.2310

**LEGEND**

- ROW/PROPERTY LINE
- CENTERLINE
- PROPERTY BOUNDARY
- EASEMENT
- NEW WATER MAIN
- NEW WATER VALVE
- NEW FIRE HYDRANT
- NEW SANITARY SEWER MAIN
- NEW STORM DRAIN
- NEW STORM DRAIN INLET
- SANITARY SEWER MANHOLE NUMBER
- STORM DRAINAGE MANHOLE NUMBER
- EX. GAS MAIN
- EX. WATER MAIN
- EX. WATER VALVE
- EX. FIRE HYDRANT
- EX. SANITARY SEWER
- EX. STORM DRAIN
- EX. STORM DRAIN INLET
- EX. POWER POLE
- EX. UNDERGROUND TELEPHONE
- EX. FENCE

**EROSION CONTROL LEGEND**

- 4" OR GRADE INLET PROTECTION
- 6" OR GRADE INLET PROTECTION
- 8" OR GRADE INLET PROTECTION BAG
- 6" SILT FENCE
- 12" SILT FENCE
- LIMITS OF CONSTRUCTION

**SITE PLAN**

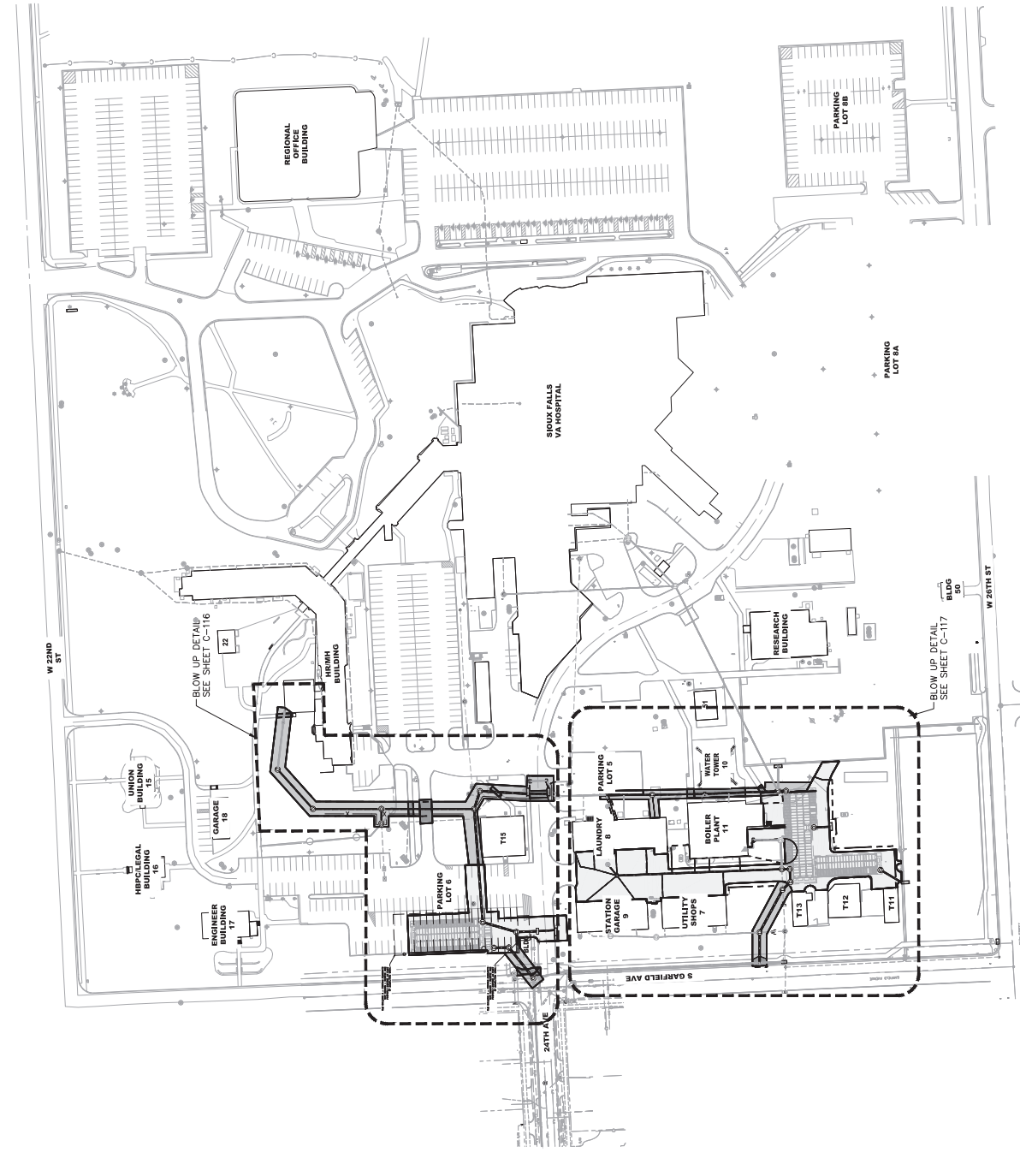
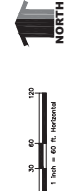
- PROPOSED CONTOURS
- EXISTING CONTOURS
- PROPOSED STORM DRAIN MANHOLE
- PROPOSED STORM DRAIN INLET
- FLOW ARROW
- 4225
- 4225

**ENGINEER NOTES:**

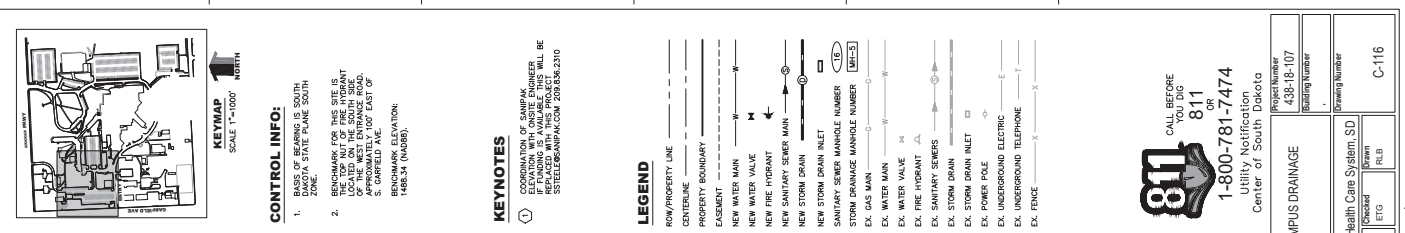
1. EXISTING STEAM TRENCH SHALL BE CLEARED OUT AND CONTRACTOR SHALL REPAIR EXISTING STEAM TRENCH AND INCLUDE IN CONTRACT PRICES TO COMPLETE CLEANING WORK.
2. ALL EXISTING CONDUITS SHALL BE REPAIRED OR REPLACED AND STRIPPED PLACED IN A DESIGNATED STACK PILE FOR REUSE AS PROCESSED TOP SOIL.
3. PAVEMENT SURFACES SHALL BE REPAIRED, CONCRETE SHALL BE REPAIRED, AND CURBS SHALL BE REPAIRED IN CONFORMANCE WITH THE RECOMMENDATIONS PROVIDED WITH THIS PROJECT. ALL REPAIRS SHALL BE COMPLETED PRIOR TO 2016 CONSTRUCTION.
4. RESTORE ALL LANDSCAPING TO ITS ORIGINAL CONDITION. FIBER MULCH SHALL BE USED TO RESTORE GRASS. CORNERED SEED MIXTURE WITH VA MAINTENANCE.
5. TO CONSTRUCTION. 'S' SHALL BE DEFINED IN THE FIELD PRIOR TO CONSTRUCTION.



1-800-781-7474  
Utility Notification  
Center of South Dakota



<b>ARCHITECT/ENGINEER OF RECORD</b> SES SPECIALIZED ENGINEERING SOLUTIONS 1800 N. STATE ST. SUITE 200 LINCOLN, NE 68503 P: (402) 391-2520 F: (402) 391-2529		<b>STAMP</b> Michael J. Stevens Project Director FEBRUARY 26, 2021	<b>Office of Construction and Facilities Management</b> U.S. Department of Veterans Affairs	<b>Overall Erosion Control</b>	<b>CD SUBMISSION</b>	<b>Project Title:</b> MITIGATE CAMPUS DRAINAGE	<b>Project Number:</b> 438-18-107 <b>Drawing Number:</b> 1
		<b>CONSULTANT</b> C.J.H. CONSULTANTS, P.C. 1800 N. STATE ST. SUITE 200 LINCOLN, NE 68503 P: (402) 241-8100 F: (402) 241-8101 www.cjh-engineers.com	<b>Shaffer &amp; Stevens</b> 1800 N. STATE ST. SUITE 200 LINCOLN, NE 68503 P: (402) 391-2520 F: (402) 391-2529	<b>Project Number:</b> 438-18-107 <b>Drawing Number:</b> 1	<b>Client:</b> Sioux Falls VA Health Care System, SD <b>Project Name:</b> MITIGATE CAMPUS DRAINAGE <b>DATE:</b> FEBRUARY 26, 2021 <b>ETG:</b> RLB	<b>Project Number:</b> 438-18-107 <b>Drawing Number:</b> 1	<b>Project Number:</b> 438-18-107 <b>Drawing Number:</b> 1



**CONTROL INFO:**

1. BASE OF BENCHMARK SOUTH DAKOTA STATE PLANE SOUTH ZONE.
2. BENCHMARK FOR THIS SITE IS LOCATED ON THE SOUTH SIDE OF THE ROAD AND IS APPROXIMATELY 100' EAST OF S. GARFIELD AVE. INTERSECTION (NAD83).

**KEYNOTES**

1. LOCATION OF STORM DRAINAGE MANHOLE NUMBER WILL BE PROVIDED BY THE OWNER. SEE SITE PLAN FOR LOCATION. CONTACT: STIBELER@NAP.COM 209.836.2310

- LEGEND**
- ROW/PROPERTY LINE
  - CENTERLINE
  - PROPERTY BOUNDARY
  - EASEMENT
  - NEW WATER MAIN
  - NEW WATER VALVE
  - NEW FIRE HYDRANT
  - NEW SANITARY SEWER MAIN
  - NEW STORM DRAIN
  - NEW STORM DRAIN INLET
  - SANITARY SEWER MANHOLE NUMBER
  - STORM DRAINAGE MANHOLE NUMBER
  - EX. GAS MAIN
  - EX. WATER MAIN
  - EX. WATER VALVE
  - EX. FIRE HYDRANT
  - EX. SANITARY SEWER
  - EX. STORM DRAIN
  - EX. STORM DRAIN INLET
  - EX. POWER POLE
  - EX. UNDERGROUND ELECTRIC
  - EX. UNDERGROUND TELEPHONE
  - EX. FENCE

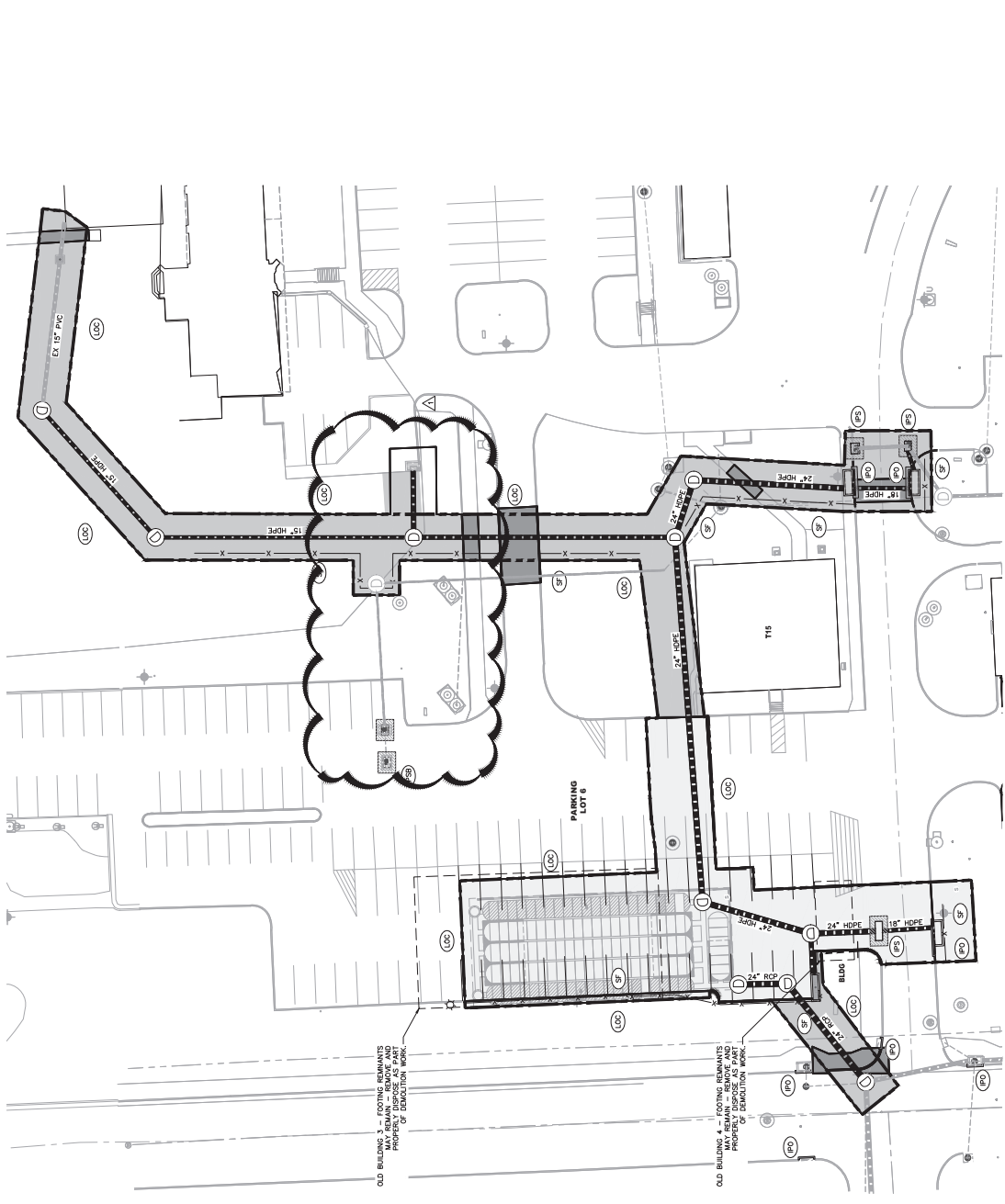
**811** CALL BEFORE YOU DIG **811** OR **1-800-781-7474**  
 Utility Notification Center of South Dakota

- EROSION CONTROL LEGEND**
- (S) 24" HDPE INLET PROTECTION
  - (S) 18" HDPE INLET PROTECTION
  - (S) 15" HDPE INLET PROTECTION BAG
  - (S) SILT FENCE
  - (S) LIMITS OF CONSTRUCTION

- SITE PLAN**
- PROPOSED DRAINAGE
  - PROPOSED STORM DRAIN MANHOLE
  - PROPOSED STORM DRAIN INLET
  - PROPOSED STORM DRAIN
  - FLOW ARROW

**ENGINEER NOTES:**

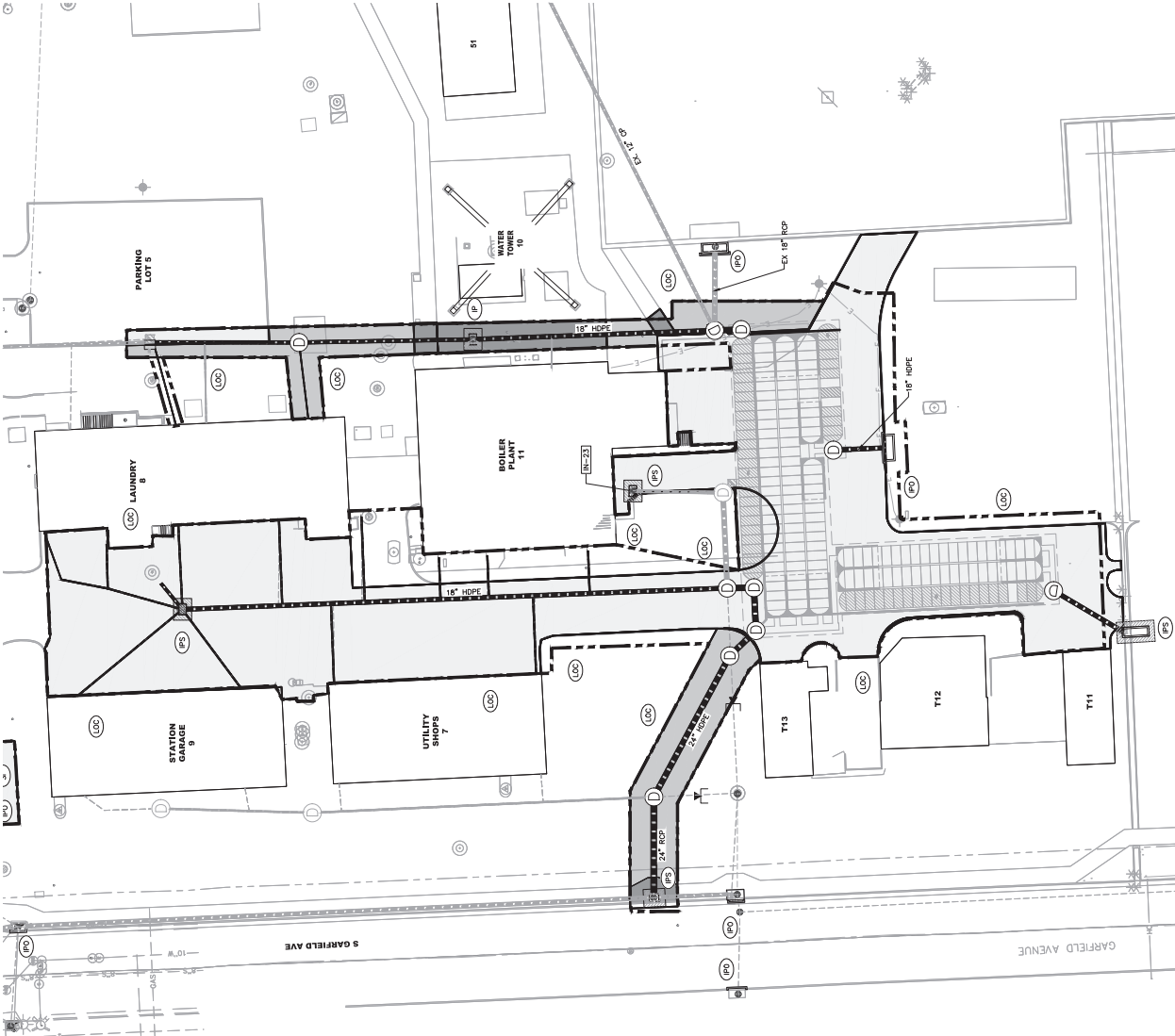
1. EXISTING STORM TRENCH SHALL BE CLEANED OUT AND REGRADED TO ORIGINAL FINISH. ALL EXISTING TRENCHES AND CURBS SHALL BE REGRADED TO ORIGINAL FINISH. CONTRACTOR SHALL VERIFY EXISTING SEAM TRENCH AND INCLUDE IN CONTRACT PRODD TO COMPLETE CLEANING WORK.
2. DISTURBED AREAS OF JOBS SHALL BE STRIPPED 4-INCHES DEEP AND RESEED WITH SEED MIXTURE 5:1:1:1:1:1:1:1:1:1 FOR REUSE AS PROCESSED TOP SOIL.
3. PAVEMENT SURFACES SHALL BE PROCESSED, CONCRETE SHALL BE REPAIRED TO ORIGINAL FINISH. CONTRACTOR SHALL REPAIR AND REFINISH ALL DAMAGE TO EXISTING PAVEMENT TO ORIGINAL FINISH IN CONFORMANCE WITH THE RECOMMENDATIONS PROVIDED WITH THIS REPORT. A GEOTECHNICAL REPORT DATED NOV. 20TH 2018. CONTRACTOR SHALL VERIFY ALL EXISTING FOUNDATION. FRESH WATERS SHALL BE USED TO RESTORE GRASS. CONTRACTOR SHALL VERIFY ALL EXISTING FOUNDATION. CONTRACTOR SHALL VERIFY ALL EXISTING FOUNDATION TO CONSTRUCTION.



OLD BUILDING 3 - FOOTING REMNANTS TO BE REMOVED AND PROVIDE REUSE AS FILL PROVIDED PURPOSE AS PART OF DEMOLITION WORK.

OLD BUILDING 4 - FOOTING REMNANTS TO BE REMOVED AND PROVIDE REUSE AS FILL PROVIDED PURPOSE AS PART OF DEMOLITION WORK.

<p><b>CONTRACT</b></p> <p>7/19/2021 2:09 PM</p> <p>PL14 VA BULLS DRAINAGE/CD/EROSION CONTROL PLAN</p> <p>DATE:</p>	<p><b>CONSULTANT</b></p> <p>07/15/2021</p> <p>Calvin L. Heinz Architects, P.C.        1415 North 14th Street, Suite 100        Lincoln, Nebraska 68502   402.234.4510        Fax: 402.234.4511   www.calvinheinz.com</p> <p><b>Shaffer &amp; Stevens</b>        5000 S. 10th Street, Suite 200        Lincoln, Nebraska 68504   402.455.2297        Fax: 402.455.2298</p>	<p><b>ARCHITECT/ENGINEER OF RECORD</b></p> <p>SPECIALIZED ENGINEERING SOLUTIONS        3400 Rte 400 E, Suite 100        Lincoln, Nebraska 68503        Phone: 402.455.2297   Fax: 402.455.2298</p> <p><b>Calibre</b>        Calibre Engineering Inc.        1001 G Street, Suite 100        Lincoln, Nebraska 68502        Phone: 402.455.2297   Fax: 402.455.2298</p>	<p><b>STAMP</b></p> <p>Professional Engineer Seal        Calvin L. Heinz        License No. 00107        State of Nebraska</p>	<p><b>Office of Construction and Facilities Management</b></p> <p>VA U.S. Department of Veterans Affairs</p>	<p><b>Approved Project Director</b></p>	<p><b>Drawing Title</b></p> <p>EROSION CONTROL PLAN</p>	<p><b>Phase</b></p> <p>CD SUBMISSION</p>	<p><b>Project Title</b></p> <p>MITIGATE CAMPUS DRAINAGE</p>	<p><b>Project Number</b></p> <p>438-18-107</p>	<p><b>Building Number</b></p>	<p><b>Drawing Number</b></p> <p>C-116</p>
--	---	--	--	--	---	---	--	---	--	-------------------------------	---



**CONTROL INFO:**

- BASE OF BEARING IS SOUTH DAKOTA STATE PLANE SOUTH ZONE.
- BENCHMARK FOR THIS SITE IS A BENCHMARK POINT LOCATED ON THE SOUTH SIDE OF THE PROPERTY, APPROXIMATELY 100' EAST OF THE PROPERTY, WITH AN APPROXIMATE ELEVATION OF 1456.84 (NAD83).

**KEYNOTES**

- CONTRACTOR SHALL VERIFY ELEVATION WITH AN ELEVATION POINT LOCATED WITHIN THE PROJECT BOUNDARY. ELEVATION WILL BE RECORDED WITH THIS PROJECT. SEE STIHELLEBANK.COM 209.836.2310

**EROSION CONTROL LEGEND**

- (PC) NEW GRADE INLET PROTECTION
- (PS) SUMP INLET PROTECTION
- (PUB) SUMP INLET PROTECTION BAG
- (S) SILT FENCE
- (OS) LIMITS OF CONSTRUCTION

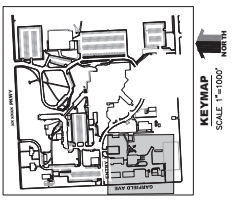
**SITE PLAN**

- PROPOSED CONTOURS
- EXISTING CONTOURS
- PROPOSED STORM DRAIN MANHOLE
- PROPOSED STORM DRAIN INLET
- FLOW ARROW

**ENGINEER NOTES:**

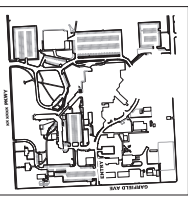
- EXISTING STEAM TRENCH SHALL BE CLEANED OUT AND REPAIRED. CONTRACTOR SHALL REPAIR EXISTING SEAM TRENCH AND INCLUDE IN CONTRACT PRICES TO COMPLETE CLEANING WORK.
- CONTRACTOR SHALL VERIFY ELEVATION WITHIN THE PROJECT BOUNDARY. ELEVATION WILL BE RECORDED WITH THIS PROJECT. SEE STIHELLEBANK.COM 209.836.2310
- PAVEMENT SURFACES SHALL BE REFINISHED, CONCRETE SHALL BE REPAIRED, AND CURBS SHALL BE REPAIRED TO CONFORM WITH THE RECOMMENDATIONS PROVIDED WITH THIS PLAN. CONTRACTOR SHALL VERIFY ELEVATION WITHIN THE PROJECT BOUNDARY. ELEVATION WILL BE RECORDED WITH THIS PROJECT. SEE STIHELLEBANK.COM 209.836.2310
- RESTORE ALL LANDSCAPING TO ITS ORIGINAL CONDITION. FIBER MULCH SHALL BE USED TO RESTORE GRASS. COMMERCE SEED MIXTURE WITH VA MAINTENANCE.
- CONSTRUCTION SHALL BE DEFINED IN THE FIELD PRIOR TO CONSTRUCTION.

- LEGEND**
- ROW/PROPERTY LINE
  - CENTERLINE
  - PROPERTY BOUNDARY
  - EASEMENT
  - NEW WATER MAIN
  - NEW WATER VALVE
  - NEW FIRE HYDRANT
  - NEW SANITARY SEWER MAIN
  - NEW STORM DRAIN
  - NEW STORM DRAIN INLET
  - NEW STORM DRAIN MANHOLE
  - SANITARY SEWER MANHOLE NUMBER
  - STORM DRAINAGE MANHOLE NUMBER
  - EX. GAS MAIN
  - EX. WATER MAIN
  - EX. WATER VALVE
  - EX. FIRE HYDRANT
  - EX. SANITARY SEWER
  - EX. STORM DRAIN
  - EX. STORM DRAIN INLET
  - EX. POWER POLE
  - EX. UNDERGROUND ELECTRIC
  - EX. UNDERGROUND TELEPHONE
  - EX. FENCE



**811**  
CALL BEFORE YOU DIG  
811  
1-800-781-7474  
Utility Notification  
Center of South Dakota

<b>ARCHITECT/ENGINEER OF RECORD</b> <b>SES ENGINEERING SOLUTIONS</b> 1000 E. 14th St., Suite 200 Pierre, SD 57501 P: 605.791.2529 F: 605.791.2528 www.ses-engineering.com		<b>STAMP</b> 	
<b>CONSULTANT</b> <b>Calibre</b> Robert J. Stevens, P.E. 1818 W. 34th Street, Suite 200 Pierre, SD 57501 P: 605.791.2529 F: 605.791.2528 www.calibre-engineers.com		<b>Office of Construction and Facilities Management</b> U.S. Department of Veterans Affairs	
<b>CONTRACTOR</b> <b>Shaffer &amp; Stevens</b> 1000 E. 14th St., Suite 200 Pierre, SD 57501 P: 605.791.2529 F: 605.791.2528 www.shaffer-stevens.com		<b>APPROVED PROJECT DIRECTOR</b> [Signature]	
<b>EROSION CONTROL PLAN</b>		<b>MITIGATE CAMPUS DRAINAGE</b>	
<b>CD SUBMISSION</b>		<b>Project Number</b> 438-18-1107 <b>Planning Number</b>	
<b>Project Title</b> EROSION CONTROL PLAN		<b>Project Title</b> MITIGATE CAMPUS DRAINAGE	
<b>Scale</b> AS SHOWN		<b>Scale</b> AS SHOWN	
<b>Issue Date</b> FEBRUARY 26, 2021		<b>Issue Date</b> FEBRUARY 26, 2021	
<b>Author</b> ETG		<b>Author</b> ETG	
<b>Checker</b> RLB		<b>Checker</b> RLB	
<b>Reviewer</b> C-117		<b>Reviewer</b> C-117	



**CONTROL INFO:**

1. BASE OF RECORD IS COUNTY DAKOTA STATE PLANS SOUTH ZONE.
2. BENCHMARK FOR THIS SITE IS A 1" X 1" X 1" BENCH MARK LOCATED ON THE SOUTH SIDE OF THE SOUTH SIDE OF APPROXIMATELY 100' EAST OF S. GARFIELD AVE. THE BENCHMARK IS IDENTIFIED BY THE FOLLOWING DATA: 1483.6X (NAD83).

**KEYNOTES**

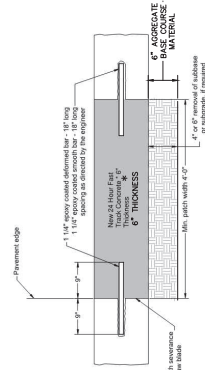
1. DESIGN BY: J. S. SWEET, CIVIL ENGINEER, LICENSE NO. 100001. LOCATION: 1000 S. GARFIELD AVE., SIOUX FALLS, SD 57105. PROJECT NO.: 200.836.2310. SITE PLAN NO.: 200.836.2310.

**LEGEND**

- ROW/PROPERTY LINE
- CENTERLINE
- PROPERTY BOUNDARY
- EASEMENT
- NEW WATER MAIN
- NEW WATER VALVE
- NEW FIRE HYDRANT
- NEW SANITARY SEWER MAIN
- NEW STORM DRAIN
- NEW STORM DRAIN INLET
- SANITARY SEWER MANHOLE NUMBER
- STORM DRAIN MANHOLE NUMBER
- EX. GAS MAIN
- EX. WATER MAIN
- EX. WATER VALVE
- EX. FIRE HYDRANT
- EX. SANITARY SEWER
- EX. STORM DRAIN
- EX. STORM DRAIN INLET
- EX. POWER POLE
- EX. UNDERGROUND TELEPHONE
- EX. UNDERGROUND TELEPHONE
- EX. FENCE

**811** CALL BEFORE YOU DIG  
 811  
 1-800-781-7474  
 Utility Notification  
 Center of South Dakota

Project Name	MITIGATE CAMPUS DRAINAGE
Project Number	438-18-107
Revision Number	
Client	Sioux Falls VA Health Care System, SD
Issue Date	FEBRUARY 26, 2021
Drawn	ETG
Checked	RLB
Project Number	C-118



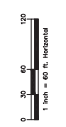
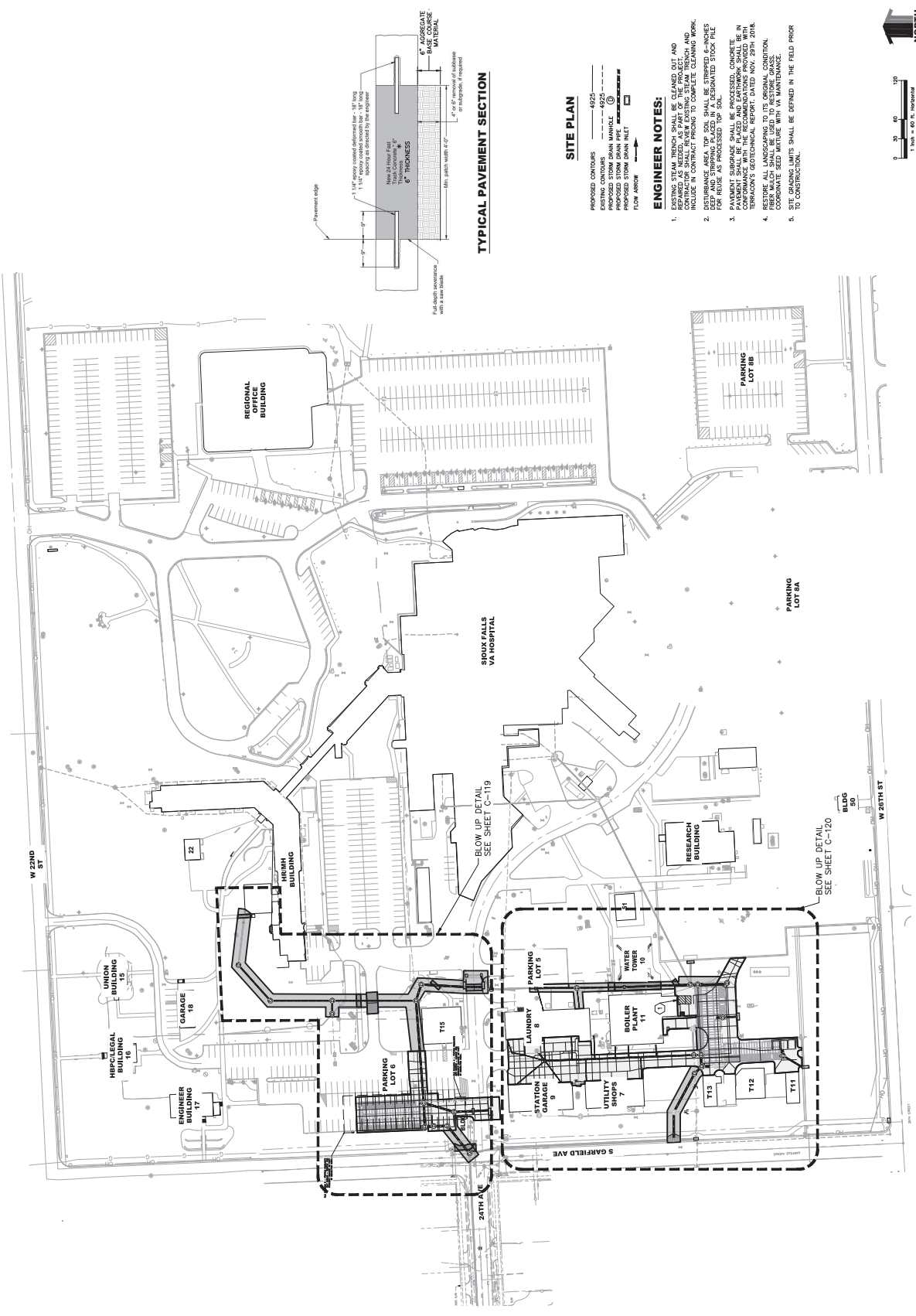
**TYPICAL PAVEMENT SECTION**

**SITE PLAN**

- PROPOSED CONTAINERS
- EXISTING CONTOURS
- PROPOSED STORM DRAIN MANHOLE
- PROPOSED STORM DRAIN INLET
- FLOW ARROW

**ENGINEER NOTES:**

1. EXISTING STEAM TRENCH SHALL BE CLEANED OUT AND CONTRACTOR SHALL REPAIR EXISTING SEAM TRENCH AND INCLUDE IN CONTRACT PRICES TO COMPLETE CLEANING WORK.
2. ALL EXISTING UTILITY TRENCHES SHALL BE REPAIRED TO ORIGINAL CONDITION AND SHALL BE REINFORCED WITH A REINFORCED CONCRETE TOP SOIL FOR REUSE AS PROCESSED TOP SOIL.
3. ALL EXISTING UTILITY TRENCHES SHALL BE REPAIRED TO ORIGINAL CONDITION AND SHALL BE REINFORCED WITH A REINFORCED CONCRETE TOP SOIL FOR REUSE AS PROCESSED TOP SOIL.
4. RESTORE ALL LANDSCAPING TO ITS ORIGINAL CONDITION. CORNERED SEED MIXTURE WITH VA MAINTENANCE.
5. TO CONSTRUCTION SHALL BE DEFINED IN THE FIELD PRIOR TO CONSTRUCTION.



Phase	CD SUBMISSION
Drawing Title	OVERALL GRADING PLAN
Project Name	MITIGATE CAMPUS DRAINAGE
Project Number	438-18-107
Revision Number	
Client	Sioux Falls VA Health Care System, SD
Issue Date	FEBRUARY 26, 2021
Drawn	ETG
Checked	RLB
Project Number	C-118

Office of Construction and Facilities Management	U.S. Department of Veterans Affairs
Approved Project Director	

ARCHITECT/ENGINEER OF RECORD

SES SPECIALIZED ENGINEERING SOLUTIONS

Calibre

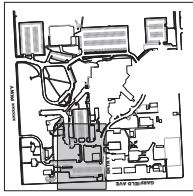
CONSULTANT

CUH CONSULTANTS

Shaffer & Stevens

DATE: \_\_\_\_\_





**CONTROL INFO:**

1. BASE OF BEARING IS SOUTH DAKOTA STATE PLANE SOUTH ZONE.
2. BENCHMARK FOR THIS SITE IS THE CORNER OF THE BUILDING LOCATED ON THE SOUTH SIDE OF 24TH AVE. APPROXIMATELY 100' EAST OF S GARFIELD AVE. (NAD83) (NAD83) (NAD83)

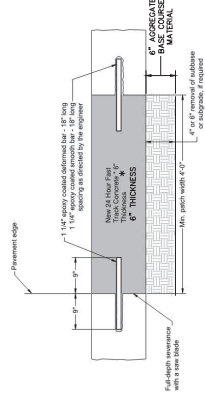
**KEYNOTES**

1. CONSULT WITH CIVIL ENGINEER FOR FUNDING AS AVAILABLE. THIS WILL BE STI@ELLENPA.COM 209.836.2310

**LEGEND**

- ROW/PROPERTY LINE
- CENTERLINE
- PROPERTY BOUNDARY
- EASEMENT
- NEW WATER MAIN
- NEW WATER VALVE
- NEW FIRE HYDRANT
- NEW SANITARY SEWER MAIN
- NEW STORM DRAIN
- NEW STORM DRAIN INLET
- SANITARY SEWER MANHOLE NUMBER
- STORM DRAINAGE MANHOLE NUMBER
- EL GAS MAIN
- EL WATER MAIN
- EL WATER VALVE
- EL FIRE HYDRANT
- EL SANITARY SEWER
- EL STORM DRAIN
- EL STORM DRAIN INLET
- EL POWER POLE
- EL UNDERGROUND ELECTRIC
- EL UNDERGROUND TELEPHONE
- EL FENCE

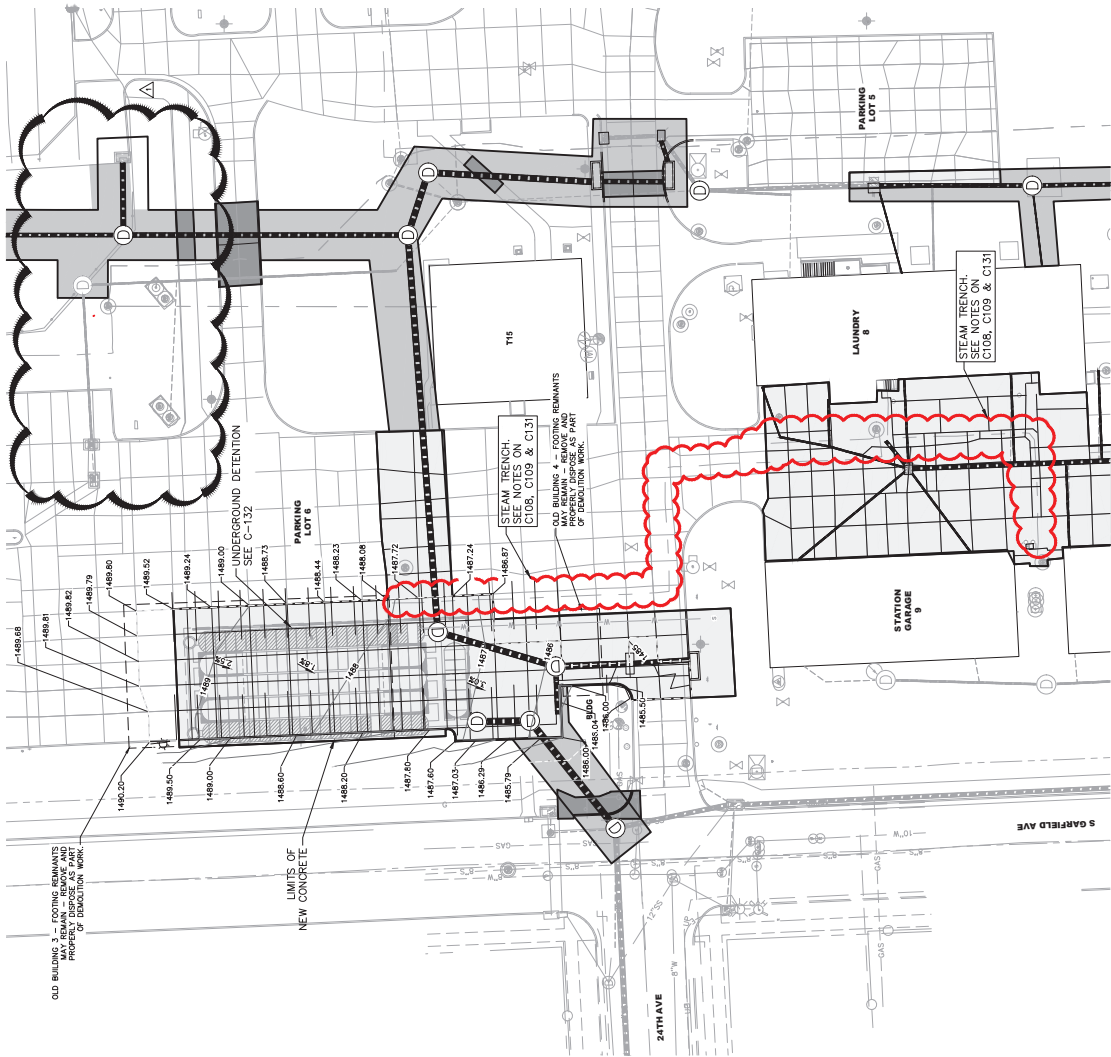
**811** CALL BEFORE YOU DIG  
**811** OR  
**1-800-781-7474**  
 Utility Notification  
 Center of South Dakota



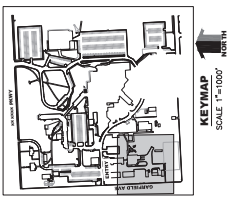
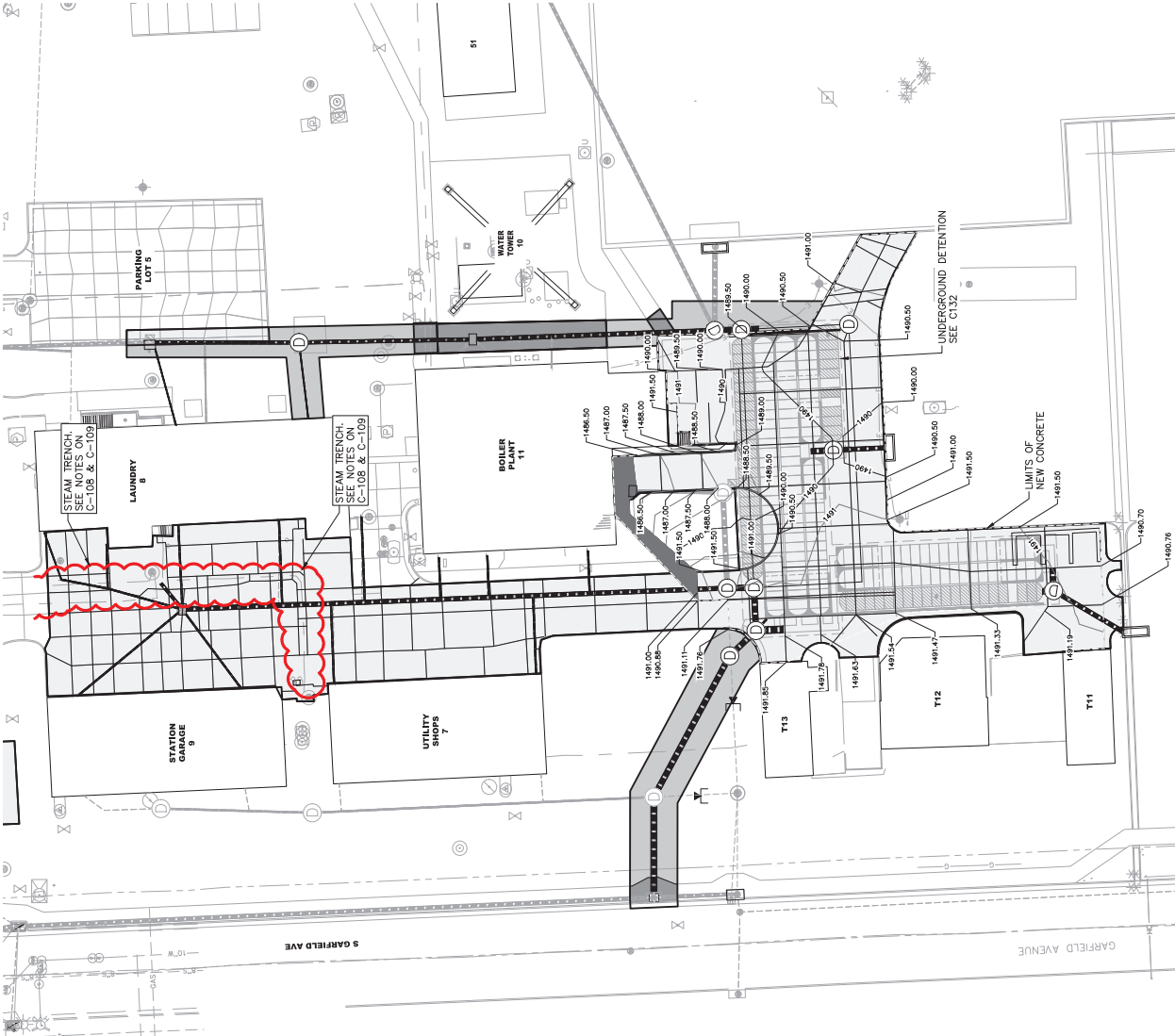
**TYPICAL PAVEMENT SECTION**

**SITE PLAN**

- PROPOSED CENTERLINE  
 PROPOSED STORM DRAIN MANHOLE  
 PROPOSED SANITARY SEWER MANHOLE  
 PROPOSED STORM DRAIN INLET  
 FLOW ARROW
- ENGINEER NOTES:**
1. EXISTING STEAM TRENCH SHALL BE CLEANED OUT AND REGRADED TO ORIGINAL FINISH. CONTRACTOR SHALL VERIFY EXISTING STEAM TRENCH AND INCLUDE IN CONTRACT PROLOG TO COMPLETE CLEANING WORK.
  2. DISTURBED AREAS OF JOBS SHALL BE STRIPPED 6-INCHES DEEP AND RESEED WITH PERMANENT TURF SEED FOR REUSE AS PROCESSED TOP SOIL.
  3. PAVEMENT SURFACES SHALL BE PROCESSED CONCRETE TO MEET THE REQUIREMENTS OF THE SPECIFICATIONS PROVIDED IN CONFORMANCE WITH THE RECOMMENDATIONS PROVIDED IN PARAGRAPH 1.1.1 OF THE TECHNICAL REPORT DATED NOV. 20TH 2016.
  4. FRESH MAJOR SHALL BE USED TO RESTORE GRASS.
  5. COORDINATE SEED MATURE WITH VA MAINTENANCE TO CONSTRUCTION.



<b>CONTRACTOR</b> Calibre 2000 N. 10th, Suite 101 Rapid City, SD 57701 Phone: 605.342.7008 Fax: 605.342.7009	<b>CONSULTANT</b> 07/05/2021 Shaffer & Stevens 2000 N. 10th, Suite 101 Rapid City, SD 57701 Phone: 605.342.7008 Fax: 605.342.7009	<b>ARCHITECT/ENGINEER OF RECORD</b> SPECIALIZED ENGINEERING SOLUTIONS 2000 N. 10th, Suite 101 Rapid City, SD 57701 Phone: 605.342.7008 Fax: 605.342.7009	<b>STAMP</b> 	<b>Office of Construction and Facilities Management</b> VA U.S. Department of Veterans Affairs	<b>Approved Project Director</b>	<b>GRADING PLAN</b>	<b>Phase</b> CD SUBMISSION	<b>Project Title</b> MITTGATE CAMPUS DRAINAGE	<b>Project Number</b> 438-18-107
						<b>Drawing Number</b> C-119	<b>Section</b> Falls VA Health Care System, SD	<b>Revision</b> 01/2021 ETOG	<b>Revision</b> 01/2021 RLB



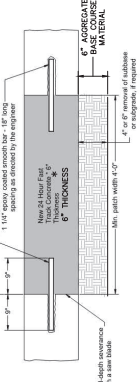
**CONTROL INFO:**

1. BASE OF BEARING IS SOUTH DAKOTA STATE PLANE SOUTH ZONE.
2. BENCHMARK FOR THIS SITE IS A 1/4" IRON ROD BENCHMARK LOCATED ON THE SOUTH SIDE OF GARFIELD AVENUE APPROXIMATELY 100' EAST OF THE PROPERTY LINES WITH AN ELEVATION OF 1483.4 (NAVD83).

**KEYNOTES**

1. DESIGNATED BY SANITARY ELEVATION WITH AN ELEVATION RECORDED WITH THIS PROJECT WILL BE RECORDED WITH THIS PROJECT. SEE STITELER@PAK.COM 209.836.2310

**TYPICAL PAVEMENT SECTION**



- LEGEND**
- ROW/PROPERTY LINE
  - CENTRELINE
  - PROPERTY BOUNDARY
  - EASEMENT
  - NEW WATER MAIN
  - NEW WATER VALVE
  - NEW FIRE HYDRANT
  - NEW SANITARY SEWER MAIN
  - NEW STORM DRAIN
  - NEW STORM DRAIN INLET
  - SANITARY SODAS MANHOLE NUMBER
  - STORM DRAINAGE MANHOLE NUMBER
  - EX. GAS MAIN
  - EX. WATER MAIN
  - EX. WATER VALVE
  - EX. FIRE HYDRANT
  - EX. SANITARY SEWER
  - EX. STORM DRAIN
  - EX. STORM DRAIN INLET
  - EX. POWER POLE
  - EX. UNDERGROUND TELEPHONE
  - EX. UNDERGROUND TELEPHONE
  - EX. FENCE

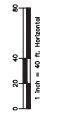
**SITE PLAN**

- PROPOSED CONTOURS
- EXISTING CONTOURS
- PROPOSED STORM DRAIN MANHOLE
- PROPOSED SANITARY SEWER MANHOLE
- PROPOSED STORM DRAIN INLET
- FLOW ARROW

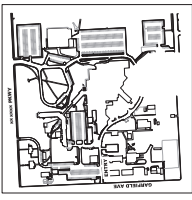
**ENGINEER NOTES:**

1. EXISTING STEAM TRENCH SHALL BE CLEARED OUT AND CONTRACTOR SHALL RE-USE EXISTING STEAM TRENCH AND INCLUDE IN CONTRACT PRICES TO COMPLETE CLEANING WORK.
2. ALL EXISTING UTILITY MANHOLES SHALL BE RE-USE AS PROVIDED IN THE FIELD PRIOR TO CONSTRUCTION.
3. PAVEMENT SURFACE SHALL BE REFINISHED, CONCRETE SHALL BE REFINISHED TO MATCH EXISTING SURFACE AND SHALL BE REFINISHED TO MATCH EXISTING SURFACE.
4. RESTORE ALL LANDSCAPING TO ITS ORIGINAL CONDITION. REPAIR MULCH SHALL BE USED TO RESTORE GRASS. CORNERED SEED MIXTURE WITH MAINTENANCE.
5. ALL CONSTRUCTION SHALL BE DEFINED IN THE FIELD PRIOR TO CONSTRUCTION.

**811**  
CALL BEFORE YOU DIG  
811  
1-800-781-7474  
Utility Notification  
Center of South Dakota



<p><b>ARCHITECT/ENGINEER OF RECORD</b></p> <p>SES ENGINEERING SOLUTIONS 1400 S. GARDEN AVENUE, SUITE 200 SIOUX FALLS, SD 57105 P: 605.336.2200 F: 605.336.2201 www.ses-engineering.com</p>	<p><b>ARCHITECT/ENGINEER OF RECORD</b></p> <p>Calibre 1400 S. GARDEN AVENUE, SUITE 200 SIOUX FALLS, SD 57105 P: 605.336.2200 F: 605.336.2201 www.calibre-engineers.com</p>	<p><b>CONSULTANT</b></p> <p>CUH CONSULTANTS 1400 S. GARDEN AVENUE, SUITE 200 SIOUX FALLS, SD 57105 P: 605.336.2200 F: 605.336.2201 www.cuh-engineers.com</p>	<p><b>CONSULTANT</b></p> <p>Shaffer &amp; Stevens 1400 S. GARDEN AVENUE, SUITE 200 SIOUX FALLS, SD 57105 P: 605.336.2200 F: 605.336.2201 www.shafferandstevens.com</p>	<p><b>Office of Construction and Facilities Management</b></p> <p>U.S. Department of Veterans Affairs</p>	<p><b>STAMP</b></p>	<p><b>Project Title</b></p> <p>MITIGATE CAMPUS DRAINAGE</p>	<p><b>Project Number</b></p> <p>438-18-107</p>
						<p><b>Phase</b></p> <p>CD SUBMISSION</p>	<p><b>Drawing Title</b></p> <p>DETAILED GRADING PLAN</p>



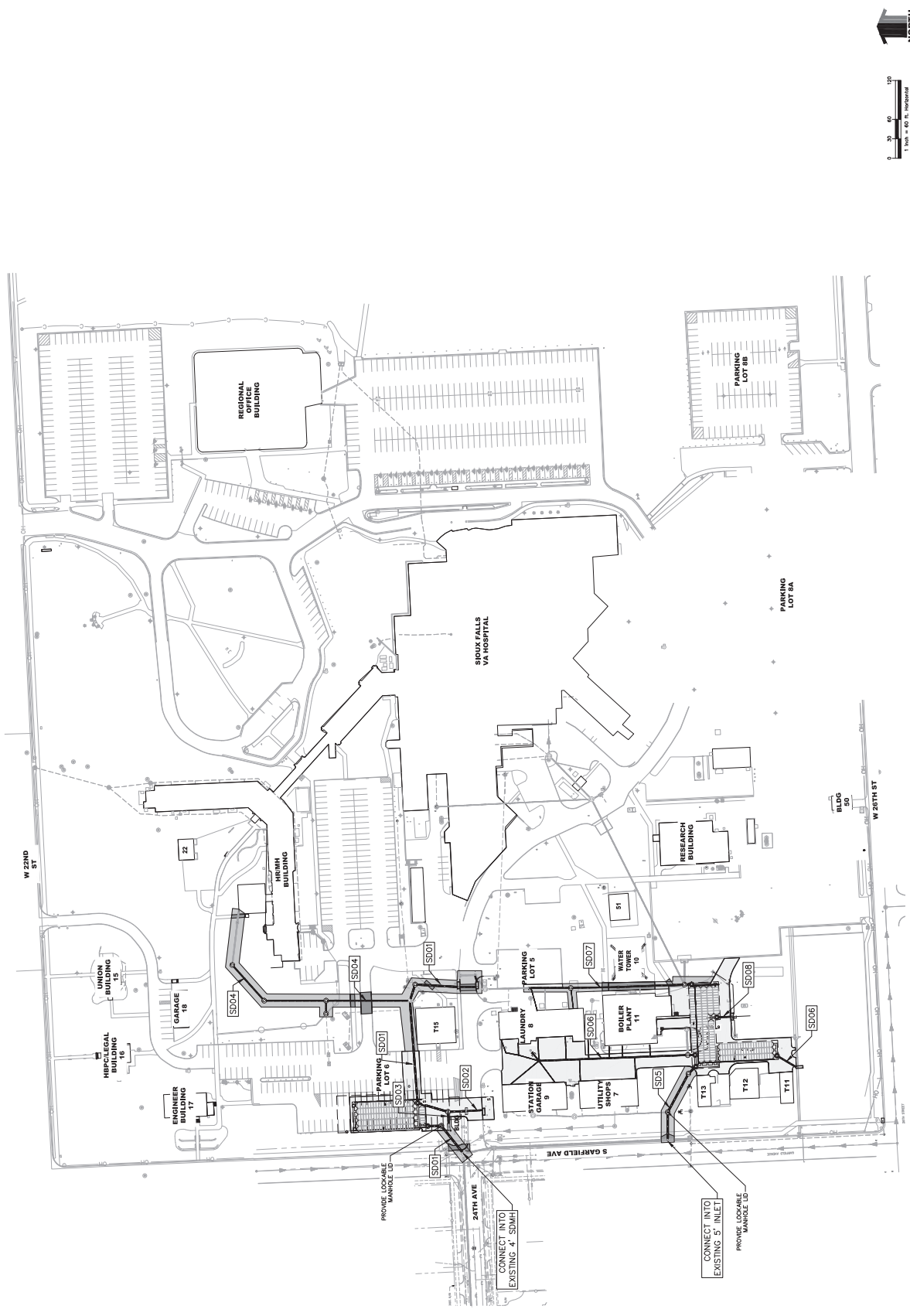
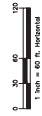
**CONTROL INFO:**

1. BASES OF BEARING: COUNTY, DAKOTA STATE PLANE, SOUTH ZONE.
2. BENCHMARK FOR THIS SITE IS LOCATED ON THE SOUTH SIDE, APPROXIMATELY 100' EAST OF S. GARFIELD AVE. NEAREST ADJACENT UTILITY: TRASH & WASTE; TRASH & WASTE.

**LEGEND**

- ROW/PROPERTY LINE
- CENTERLINE
- PROPERTY BOUNDARY
- EASEMENT
- NEW WATER MAIN
- NEW WATER VALVE
- NEW FIRE HYDRANT
- NEW SANITARY SEWER MAIN
- NEW STORM DRAIN
- NEW STORM DRAIN INLET
- SANITARY SEWER MANHOLE NUMBER
- STORM DRAINAGE MANHOLE NUMBER
- EX. GAS MAIN
- EX. WATER MAIN
- EX. WATER VALVE
- EX. FIRE HYDRANT
- EX. SANITARY SEWER
- EX. STORM DRAIN
- EX. STORM DRAIN INLET
- EX. POWER POLE
- EX. UNDERGROUND ELECTRIC
- EX. UNDERGROUND TELEPHONE
- EX. FENCE

CALL BEFORE YOU DIG  
**811**  
OR  
1-800-781-7474  
Utility Notification  
Center of South Dakota



Project Title <b>MITIGATE CAMPUS DRAINAGE</b>	Project Number <b>438-18-107</b>
Phase <b>CD SUBMISSION</b>	Planning Number <b>438-18-107</b>
Planning Title <b>STORM INDEX MAP</b>	Planning Number <b>C-121</b>
Office of Construction and Facilities Management U.S. Department of Veterans Affairs	Client <b>Sioux Falls VA Health Care System, SD</b>
ARCHITECT/ENGINEER OF RECORD SES SPECIALIZED ENGINEERING SOLUTIONS 1800 W. 14th St., Suite 100 Sioux Falls, SD 57105 P: 605.336.4000 F: 605.336.4001 www.ses-engineering.com	Approval DATE: FEBRUARY 26, 2021 BY: ETG R.L.B.
CONSULTANT CJH CONSULTANTS, INC. 1800 W. 14th St., Suite 100 Sioux Falls, SD 57105 P: 605.336.4000 F: 605.336.4001 www.cjh-engineers.com	DATE: _____
Shaffer & Stevens 1800 W. 14th St., Suite 100 Sioux Falls, SD 57105 P: 605.336.4000 F: 605.336.4001 www.shafferandstevens.com	DATE: _____
Calibre 1800 W. 14th St., Suite 100 Sioux Falls, SD 57105 P: 605.336.4000 F: 605.336.4001 www.calibre-engineers.com	DATE: _____