

Questions/Answers

Solicitation 36C26323R00001

Upgrade Mental Health Lock Ward

NO.	QUESTIONS	ANSWERS
1	<p>Safety Padding Room D-129</p> <p>The Demolition plan note 2.21 calls for removing all rubber surface material on the walls and floors. "DEMO EXISTING RUBBERIZED WALL COATING. PREP WALLS AND FLOOR FOR NEW RUBBERIZED COATING APPLICATION"</p> <p>The Room finish schedule calls for the repair of the existing rubber materials, "REPAIR AND EXTEND RUBBER AS INDICATED ON PLAN"- yet there is no scope of work. Is the padding to be reused and extended or install new?</p>	<p>AE: Remove all existing padding material and install new padding materials on floor and walls.</p>
2	<p>DIV 21</p> <p>Is the ceiling in the patient waiting room going to be higher when all construction is done or is it staying the same height?</p>	<p>VA: The sally port and intake room ceilings shall be installed at 9 feet or higher. All other rooms are noted sheet AE-110.</p>
3	<p>Alarm system is a Simplex. IS the VA wanting to keep Simplex panel, or install new?</p>	<p>AE: Maintain the Simplex panel.</p>
4	<p>DIV 21</p> <p>In one of the male bathrooms there are a couple of institutional sprinkler heads missing, will the VA want these added before construction or add them after demo?</p>	<p>VA: The VA does not want work to occur while the ward is occupied. Coordinate trades and maintain appropriate sprinkler head coverage when ceilings are removed per the VA Fire design manual 1.4.</p>
5	<p>DIV 26-28</p> <p>Given the number of new PACS readers to be added, a PACS panel/subpanel will be required. With the information provided, the nearest PACS panel is believed to be located in Building 148B Room ATC1; please confirm that this is the desired location for the additional subpanel and if there is sufficient wall space available (30"W x 36"H)? An alternate PACS panel location closer to the field points may be a good recommendation.</p>	<p>VA: For bidding purposes assume ATC1.</p>
6	<p>DIV 8/28</p> <p>Power supplies appear to be furnished within Div 08 for each PACS door. The traditional campus standard has been to furnish electronic locking power from the PACS panel, please confirm if the intent is to change this?</p>	<p>AE: Locking power should be furnished from the PACS panel.</p>

7	DIV 12 Please confirm the specs 12 36 00 are referring to window sills and not countertops. Please confirm what window types are to receive window sills. Please confirm Material, Colors, and edging.	AE: Yes, Division 12 is included for solid surface window sills. Windows getting sills are noted by keynote 6.60C on Sheet AE-101.
8	Period of Performance Does the PoP account for long lead times certain Divisions have when procuring material/equipment?	No - we have run into this issue on several of our contracts. If you feel that there are several long lead items, we can provide a limited NTP at the Pre-Construction meeting. When the submittals are approved and the items are expected, we can issue the Notice to proceed.
9	DIV 8 Please confirm that the only new storefront windows will be the (3) type C2 windows.	AE: yes the only fully new aluminum windows are the ones noted C2.
10	DIV 8 Per glass manufacturer the type D, D2, and D6 door lites are too small to be tempered laminated glass. They can be annealed lami but not tempered lami. Please advise	AE: we confirmed with a manufacturer that the size of the glass is not available as tempered laminated. Please provided annealed laminated glass for these lite only.
11	DIV 8 Fire rated door lites type D5 in door pair CC105A must be 5/16" thick not 7/16" as listed. 7/16" not available. Please advise.	AE: 5/16" glass is acceptable at fire rated door CC105A.
12	DIV 8 For the aluminum storefront manufacturer warranty there would be a maximum 10 years. 20 years as stated in the specs is not available. Is this acceptable	AE: the 10 years maximum warranty is in line with industry standard and acceptable.
13	CMU Lintels Drawing Sheet Ad-201. Keynote 2.09E. Are Lintels required above new window openings? If so please provide details on material and requirements.	AE: Lintels to be TS8x4 as per detail 4 on sheet 148-8 of existing drawing set. Detail flashing similar. Sheet 148-8 attached at end of question response.
14	Commissioning Please clarify if the Contractor is to provide Commissioning services or if the VA provided Commissioning Agent is to cover all responsibilities.	AE: The VA has employed a Commissioning agent, contractor to supply commissioning coordination for all disciplines covered and will work with VA Commissioning agent to complete all testing and resolutions.
15	Working Hours Please clarify quiet working hours next to sleep lab.	Sleep lab operates from about 8pm to 9am. Contractor shall plan activities to avoid loud activities and activities that cause vibration through the building during these hours.

- D. For design features that are addressed by both the IBC as well as by NFPA 101 or a document referenced by NFPA 101, the requirements of NFPA 101 or the document referenced by NFPA 101 must be used exclusively (this applies even if the IBC requirements are different).

Note: VA buildings must meet the requirements of NFPA 101, and documents referenced by NFPA 101 in order to comply with the accreditation requirements of the Joint Commission. It is intended that life safety and fire protection features will be designed in accordance with the requirements of NFPA 101 and documents referenced by NFPA 101. Other building features (including, but not limited to, structural strength, stability, sanitation, adequate light and ventilation, and energy conservation) will be designed in accordance with the IBC and documents referenced by the IBC or as identified in VA Program Guide [PG-18-3](#), Topic 1 – Codes, Standards, and Executive Orders.

- E. Strict compliance to codes and standards is mandatory for new construction.

1.4 Fire Protection During Construction:

- A. Coordinate with the facility prior to and concurrent with design.
- B. Fire protection during construction must comply with VA Master Construction Specifications. (Note: Specification Section 01 35 26 , Safety Requirements, addresses NFPA 241, Joint Commission Interim Life Safety Measures, Hot Work Permits, etc..)
- C. Separate all occupied areas from demolition, rehabilitation, or construction activities by temporary smoke-tight construction partitions of gypsum board or other approved non-combustible or limited-combustible material. Partitions must be full height, extending through suspended ceilings to the floor slab or roof deck above and must be one-hour fire rated, unless sprinklers are installed and are operational on both sides of the temporary partition whereupon the partition may be permitted to terminate at the ceiling in accordance with NFPA 241. Where the ceiling on one side of the temporary construction barrier has been removed, the temporary partition must extend to the deck above.

Note: This requirement is due to the inherently greater potential for fire or hazardous materials incidents associated with the combustibles and operations of demolition/construction. This risk is made worse by the likelihood of compromised fire protection systems and fire or smoke resistant construction. This does not obviate the need to provide other protective measures to contain dust and debris as specified by VA Master Specification Section 01 35 26 1.14 (D). Sprinklers are considered to be operational when they are installed in accordance with NFPA 13 (spacing, protection, distance from the ceiling, etc.) and there is a sufficient automatic water supply. If the ceiling was removed and the sprinklers remain at the original ceiling level, they would likely not be considered operational. A change to the 2021 edition of NFPA 101 (18/19.7.9.3) addresses separation requirements for short duration nonhazardous construction activities. The change permits the use of fire-retardant plastic as a temporary barrier.

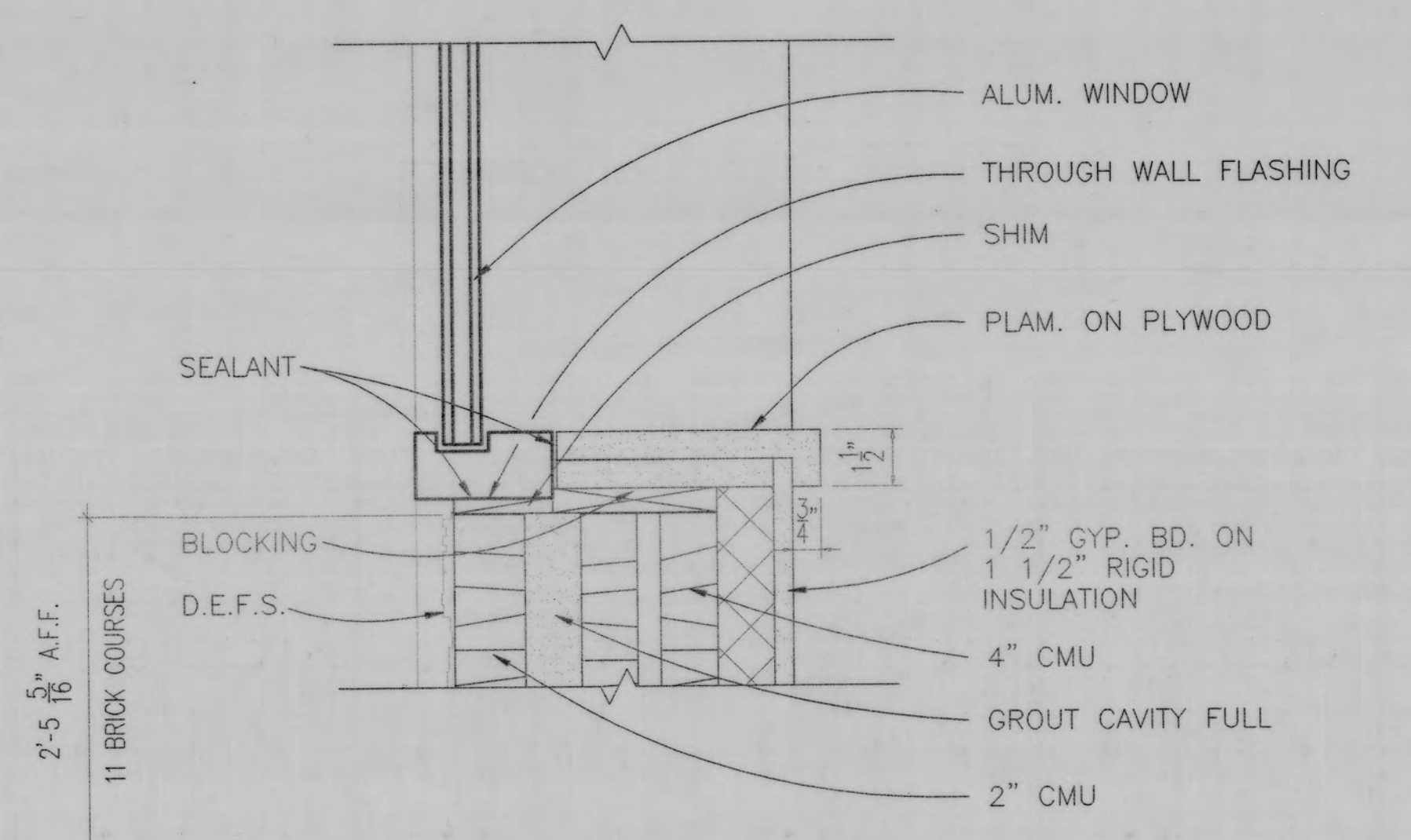
- D. Phase construction as necessary to ensure that obstruction of exits is minimized or avoided. If exits are obstructed during construction, provide alternate exit routes during each phase of construction and identify the alternate routes on the construction drawings.
- E. Minimize or avoid disruptions to fire alarm and sprinkler systems. Delineate phasing of construction to ensure that installations of new systems are expedited, and where possible, maintain existing systems in service until the replacement system is operational. If fire protection systems are to be disrupted, ensure procedures are incorporated to maintain



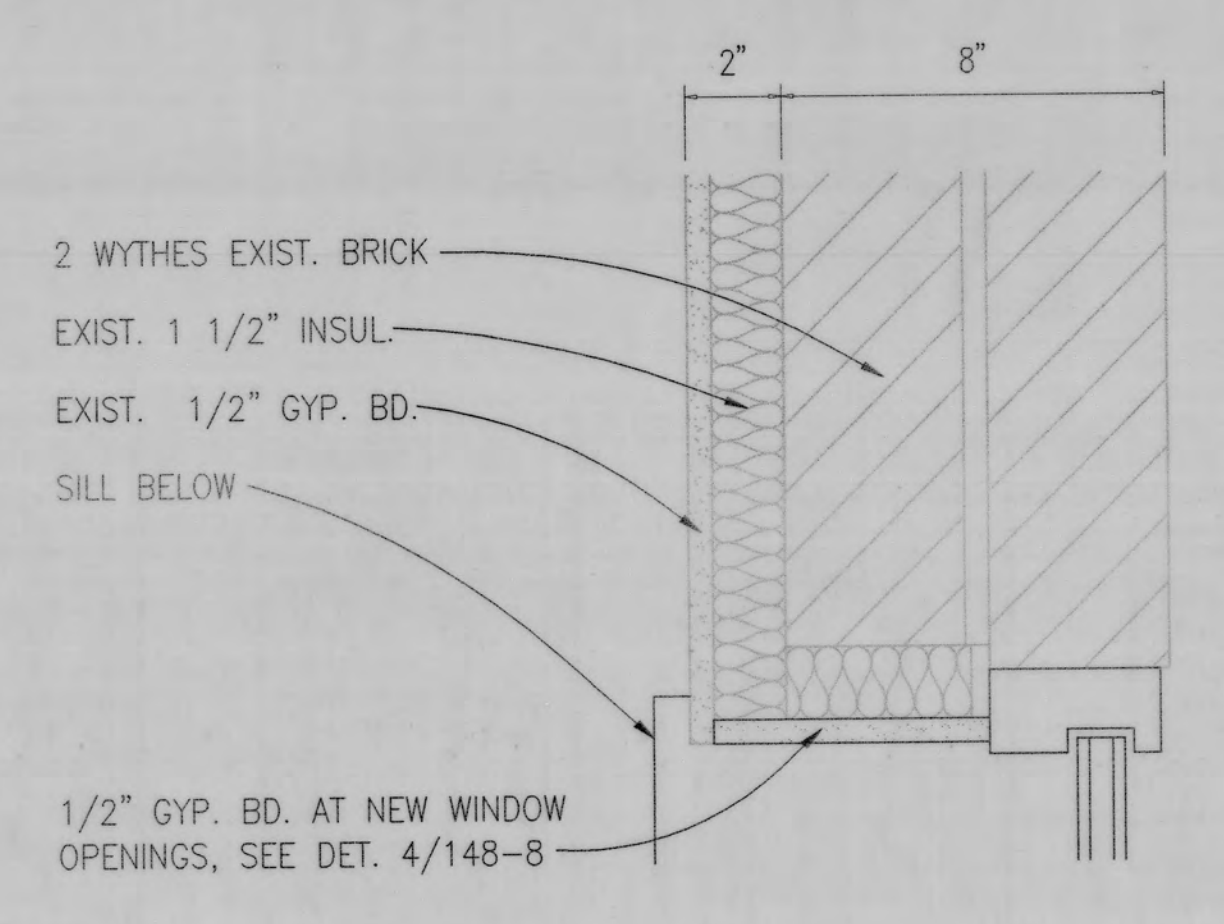
equivalent levels of fire protection and provide formal notification to the facility while systems are down.

1.5 Americans with Disabilities Act (ADA): Fire Protection requirements of ADA do not apply to federal agencies. VA is required to comply with the Architectural Barriers Act Accessibility Standard (ABAAS) for Federal Facilities. In addition, VA uses the Barrier Free Design Standard to meet the needs of the Department of Veterans Affairs in its health care facilities.

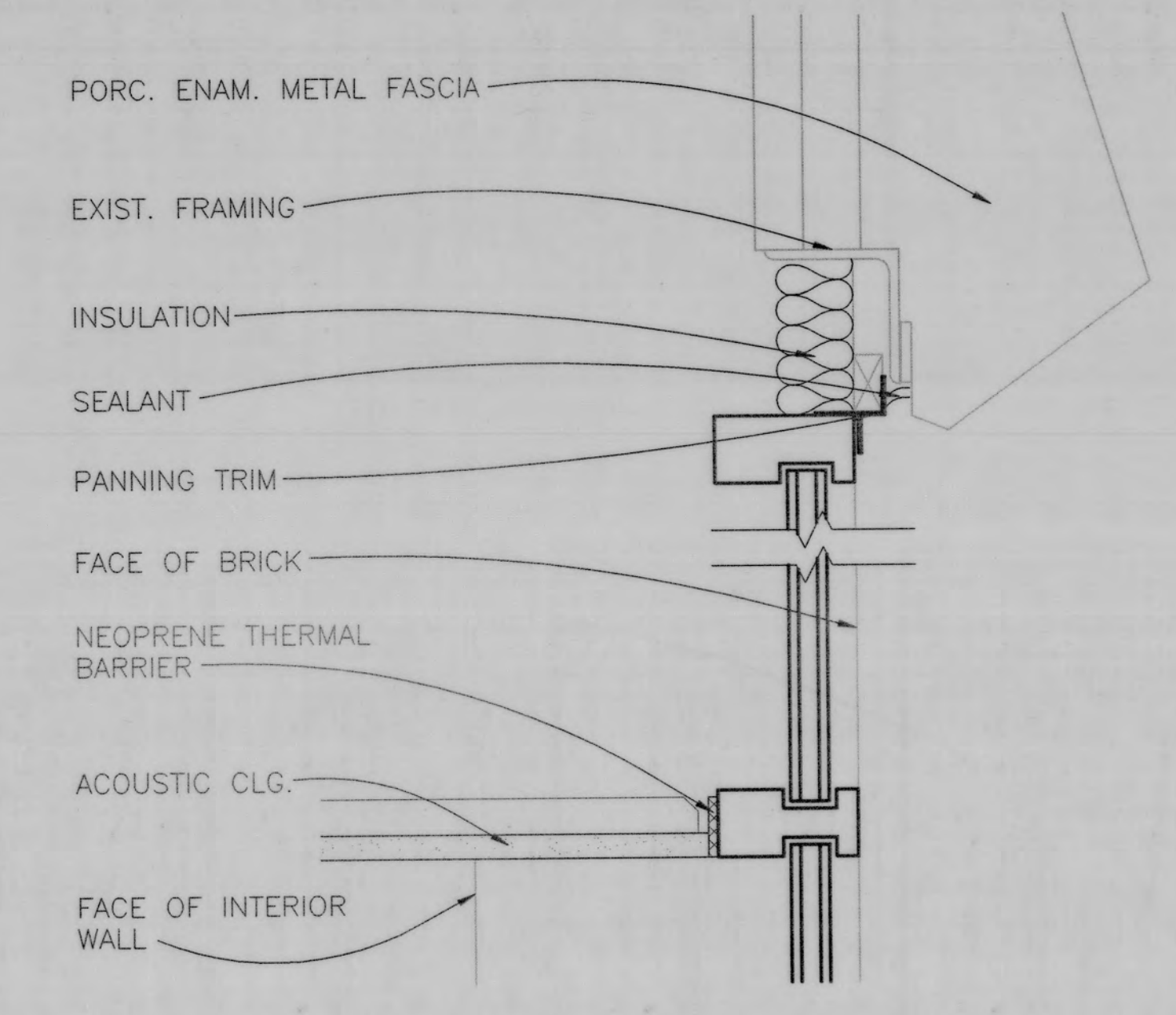




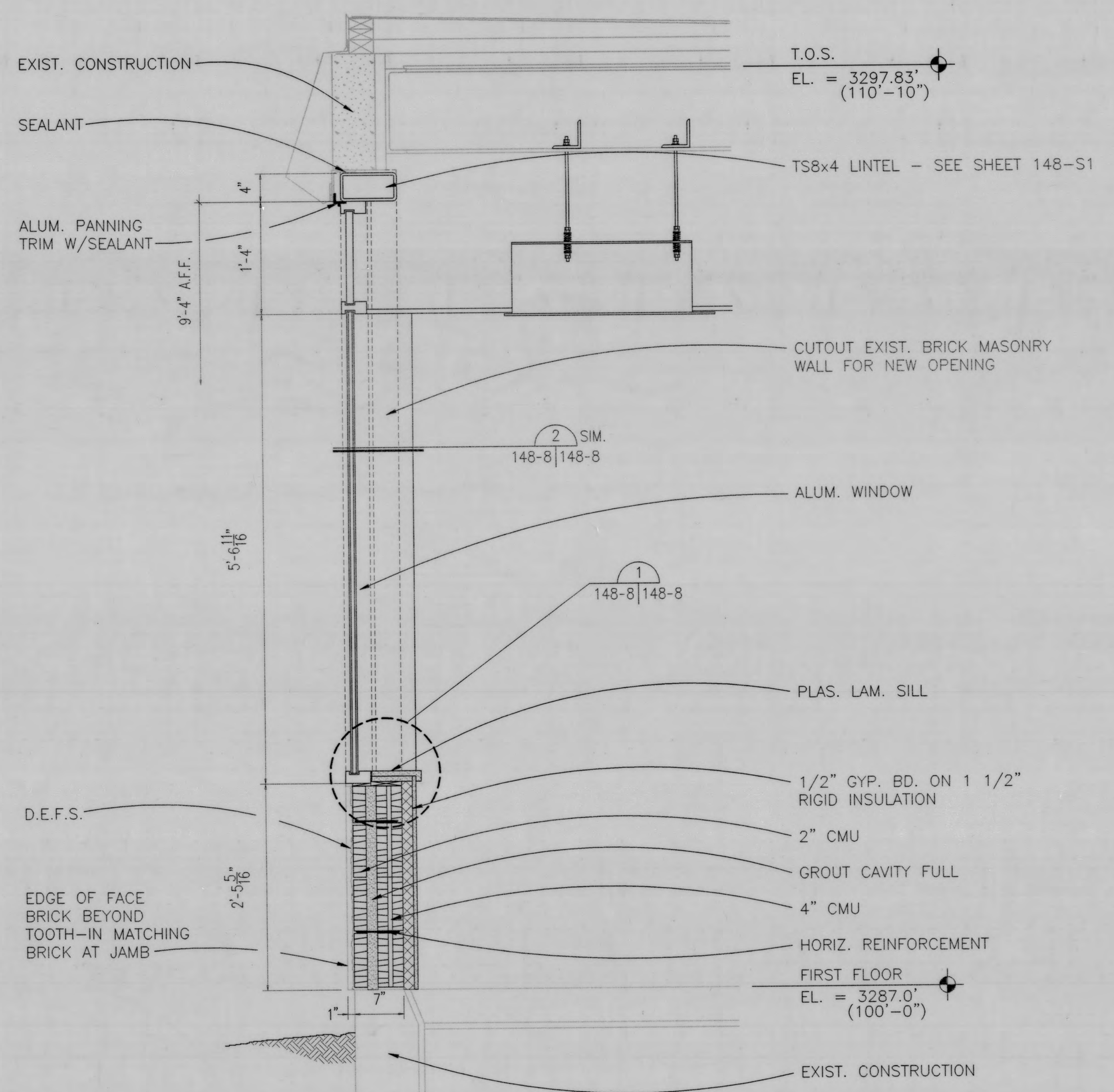
1 SILL DETAIL
148-8|148-8 SCALE: 3" = 1'-0"



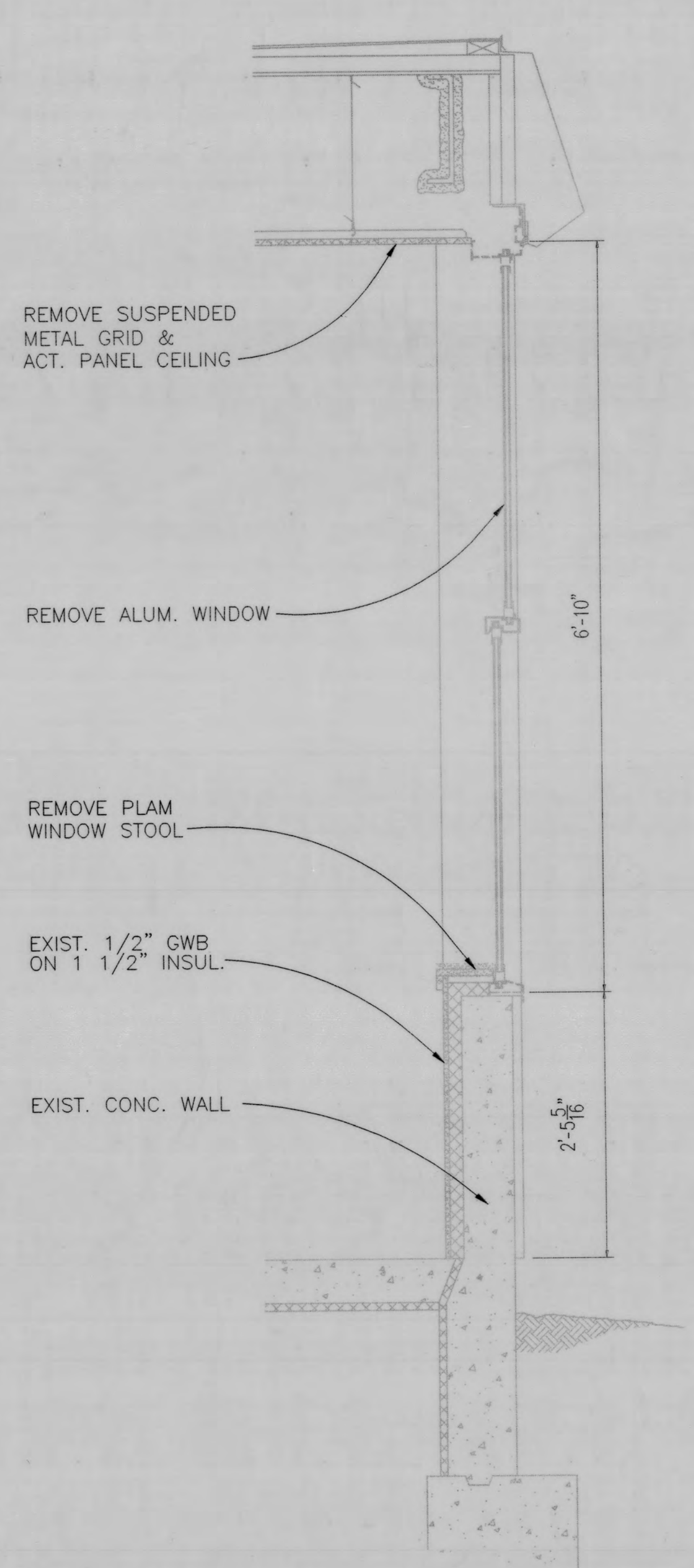
2 JAMB DETAIL
148-8|148-8 SCALE: 3" = 1'-0"



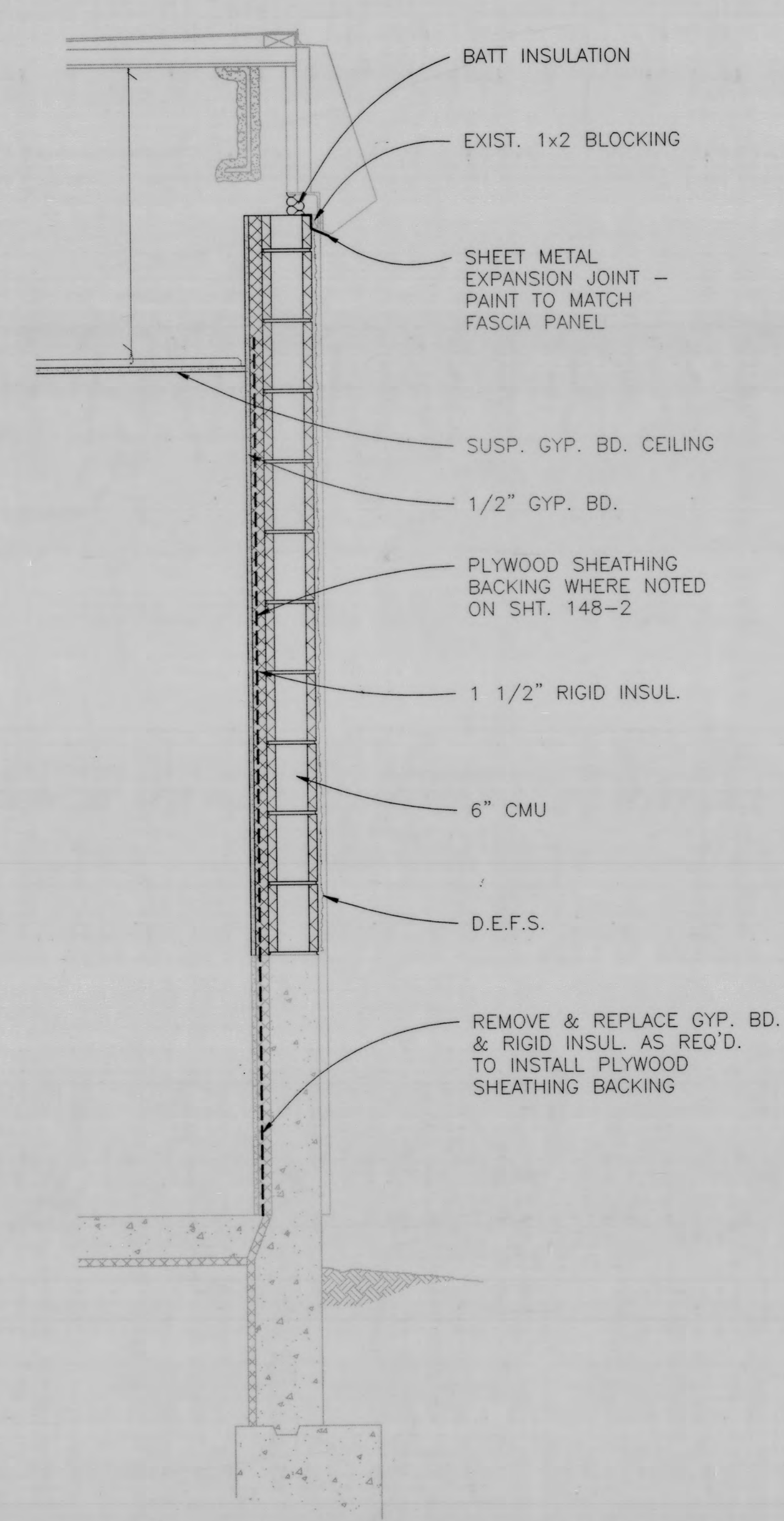
3 HEAD DETAIL
148-8|148-8 SCALE: 3" = 1'-0"



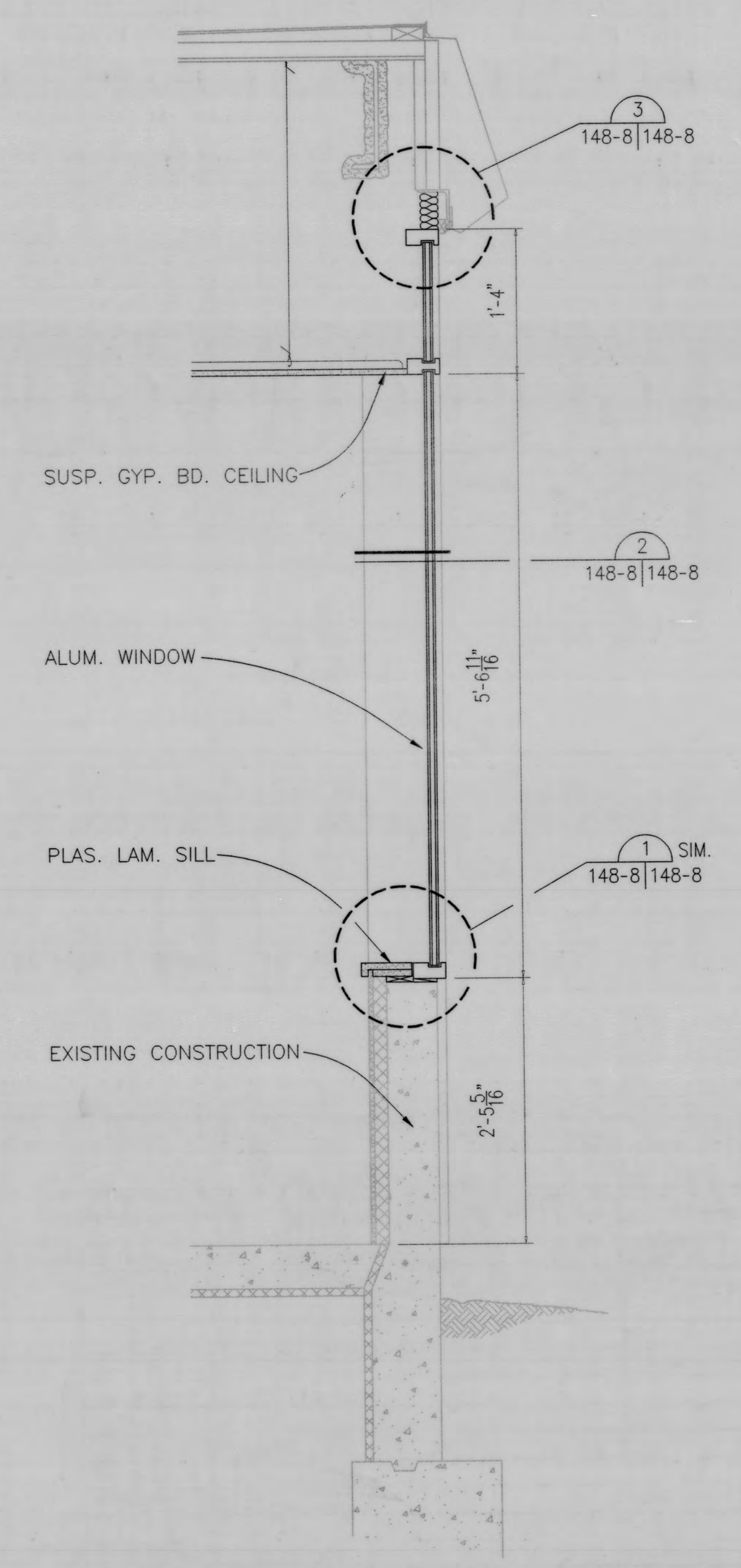
4 WALL SECTION @ NEW WINDOW
148-2|148-8 SCALE: 1" = 1'-0"



A. EXISTING WINDOW



B. WINDOW IN-FILL



C. WINDOW REPLACEMENT

5 WALL SECTION @ EXISTING WINDOW
148-2|148-8 SCALE: 1" = 1'-0"

Record Drawings	11/01
Revisions	Date

THE SCHEMMER ASSOCIATES
Architects Engineers
TSA PROJECT NO. 403202

Approved: Chief Engineering Services
Approved: Associate Director
Approved: Chief of Staff
Approved: Medical Center Director

Drawing Title	WALL SECTIONS
Approved Project Director	

Project title	CONSOLIDATE MHBS
Date	11/29/99
Project No.	568-305
Building Number	148
Checked	MJH
Drawn	ZPB
Location	FORT MEADE, SD
DRAWING NO.	148-8
Dwg. of	

Veterans Affairs

VAMC148-8.dwg 103101 111731

Date: October 25, 2022	Project: VA FM Upgrade Mental Health Lock Ward
To: Stone Group Architects	Project #: VAMC 68-20-102 WPE: BR21045
From: West Plains Engineering 1750 Rand Road Rapid City, SD 57702	Project Location: Ft. Meade, SD Addendum #: Addendum 0001

To: All prime contract bidders and all others to whom Drawings and Specifications have been issued by the Engineer. Acknowledge receipt of the Addendum by inserting its number and date on the Bid Form. Failure to do so may subject bidder to disqualification. This Addendum forms a part of the Contract Documents. It modifies them as follows:

Drawings

Sheet MJ503:

1. For Comment #5 under the Air Handling Unit Schedule, the steam humidifier shall be provided with 5 psi LPS steam at a load of 133 lbs/h. EAT= -20/-20 DEG F, LAT=55/52 DEG F. Humidifier shall be installed on the supply ductwork leaving the unit. Ductwork shall be stainless steel for 1 ft before and 4 ft after the humidifier, pitched to a drain, with a 3/4" condensate drain piped to the nearest floor drain.

Sheet MJ504:

1. Refer to attached revised Sheet MJ504 for inclusion of Air Separator Schedule.

END OF DOCUMENT – MSH/MKV

UNIT HEATER SCHEDULE

UNIT TYPE	UNIT NUMBER	MANUFACTURER	MODEL	LOCATION	CFM	HEATING						MOTOR			COMMENTS		
						BTU/H OUTPUT	GPM	EWT	LWT	WPD	EAT	% GLYCOL	HP	RPM		VOLTAGE	PHASES
UH	1	TRANE	S-204	PENTHOUSE	2900	62600	8.8	140 F	110 F	0.32 RH2O	70 F	30	0.33 hp	1140	120	1	1
UH	2	TRANE	S-204	PENTHOUSE	2900	62600	8.8	140 F	110 F	0.32 RH2O	70 F	30	0.33 hp	1140	120	1	1
UH	3	TRANE	S-204	PENTHOUSE	2900	62600	8.8	140 F	110 F	0.32 RH2O	70 F	30	0.33 hp	1140	120	1	1

COMMENTS:
1 SELECTED AT 3200 FT ELEVATION.

LOUVER SCHEDULE

UNIT TYPE	UNIT NUMBER	MANUFACTURER	MODEL	LOCATION	FUNCTION	SIZE		CFM	S.P.	FREE AIR VELOCITY	COMMENTS
						WIDTH	HEIGHT				
L	1	RUSKIN	ELF6375DX	PENTHOUSE	EXHAUST	36"	24"	2530	0.10 in-wg	870 FPM	1,2,3

COMMENTS:
1 PROVIDE WITH BIRD SCREEN.
2 ARCHITECT TO SELECT COLOR.
3 ALUMINUM CONSTRUCTION WITH BAKED ENAMEL FINISH.

VOLUME FLOW LIMITER SCHEDULE

UNIT TYPE	UNIT NUMBER	MANUFACTURER	MODEL	SIZE	INLET DUCT SIZE	CFM	CFM MAXIMUM	CFM MINIMUM	COMMENTS
VFE	05	RUSKIN	ABD	4	4 in	50	125	30	
VFE	06	RUSKIN	ABD	4	4 in	50	125	30	
VFE	07	RUSKIN	ABD	4	4 in	50	125	30	
VFE	08	RUSKIN	ABD	4	4 in	50	125	30	
VFE	09	RUSKIN	ABD	4	4 in	50	125	30	
VFE	10A	RUSKIN	ABD	6	6 in	100	240	60	
VFE	10B	RUSKIN	ABD	6	6 in	100	240	60	
VFE	11AA	RUSKIN	ABD	6	6 in	240	240	60	
VFE	11AB	RUSKIN	ABD	6	6 in	240	240	60	
VFE	11BA	RUSKIN	ABD	6	6 in	200	240	60	
VFE	11BB	RUSKIN	ABD	6	6 in	175	240	60	
VFE	11BC	RUSKIN	ABD	6	6 in	175	240	60	
VFE	12	RUSKIN	ABD	6	6 in	100	240	60	
VFE	13	RUSKIN	ABD	6	6 in	100	240	60	
VFE	14	RUSKIN	ABD	6	6 in	100	240	60	
VFE	15	RUSKIN	ABD	6	6 in	100	240	60	
VFE	16	RUSKIN	ABD	6	6 in	100	240	60	
VFE	17	RUSKIN	ABD	6	6 in	100	240	60	
VFE	18	RUSKIN	ABD	6	6 in	100	240	60	
VFE	19	RUSKIN	ABD	6	6 in	150	240	60	
VFS	01	RUSKIN	ABD	6	6 in	220	240	60	
VFS	02	RUSKIN	ABD	6	6 in	205	240	60	
VFS	03	RUSKIN	ABD	4	4 in	50	125	30	
VFS	04	RUSKIN	ABD	4	4 in	50	125	30	
VFS	05	RUSKIN	ABD	4	4 in	50	125	30	
VFS	06	RUSKIN	ABD	4	4 in	50	125	30	
VFS	07	RUSKIN	ABD	4	4 in	50	125	30	
VFS	08	RUSKIN	ABD	4	4 in	50	125	30	
VFS	09	RUSKIN	ABD	4	4 in	50	125	30	
VFS	10A	RUSKIN	ABD	6	6 in	100	240	60	
VFS	10B	RUSKIN	ABD	6	6 in	100	240	60	
VFS	11AA	RUSKIN	ABD	6	6 in	200	240	60	
VFS	11AB	RUSKIN	ABD	6	6 in	200	240	60	
VFS	11BA	RUSKIN	ABD	6	6 in	200	240	60	
VFS	11BB	RUSKIN	ABD	6	6 in	200	240	60	
VFS	12	RUSKIN	ABD	6	6 in	100	240	60	
VFS	13	RUSKIN	ABD	6	6 in	100	240	60	
VFS	14	RUSKIN	ABD	6	6 in	100	240	60	
VFS	15	RUSKIN	ABD	6	6 in	100	240	60	
VFS	16	RUSKIN	ABD	6	6 in	100	240	60	
VFS	17	RUSKIN	ABD	6	6 in	100	240	60	
VFS	18	RUSKIN	ABD	6	6 in	100	240	60	
VFS	19	RUSKIN	ABD	6	6 in	75	240	60	
VFS	20	RUSKIN	ABD	6	6 in	75	240	60	
VFS	21	RUSKIN	ABD	6	6 in	75	240	60	
VFS	22	RUSKIN	ABD	6	6 in	75	240	60	
VFS	37	RUSKIN	ABD	6	6 in	230	240	60	

COMMENTS:
1 EACH VOLUME FLOW LIMITER TO BE PROVIDED WITH MOTORIZED DAMPER (BY TEMPERATURE CONTROL).

PUMP SCHEDULE

UNIT TYPE	UNIT NUMBER	MANUFACTURER	MODEL	SERVICE	GPM	HEAD	IMPELLER SIZE	% GLYCOL	HP	VOLTAGE	PHASES	RPM	COMMENTS
CWP	1B	ARMSTRONG	4280 4X3X6	CHILLED WATER	240	30 RH2O	6.06	30	3	208	3	1750	1,2,3,4,5
CWP	2A	ARMSTRONG	4030 3X2X10	CHILLED WATER	250	70 RH2O	9.02	30	7.5	208	3	1750	1,2,3,4,5
CWP	2B	ARMSTRONG	4030 3X2X10	CHILLED WATER	250	70 RH2O	9.02	30	7.5	208	3	1750	1,2,3,4,5
HWP	1	ARMSTRONG	3X2 5X8	HEATING WATER	185	50 RH2O	7.52	30	5	208	3	1750	1,2,3,4,5
HWP	2	ARMSTRONG	3X2 5X8	HEATING WATER	185	50 RH2O	7.52	30	5	208	3	1750	1,2,3,4,5

COMMENTS:
1 PROVIDE WITH SHAFT GROUNDING KITS.
2 NON-OVERLOADING, PREMIUM EFFICIENCY MOTOR.
3 MOTOR-RATED PER NEMA MG-1, PART 31 FOR INVERTER DUTY.
4 PROVIDE STRUCTURAL/INERTIAL BSE FOR ALL BASE-MOUNTED PUMPS.
5 VFD BY TEMPERATURE CONTROL CONTRACTOR.

EXPANSION TANK SCHEDULE

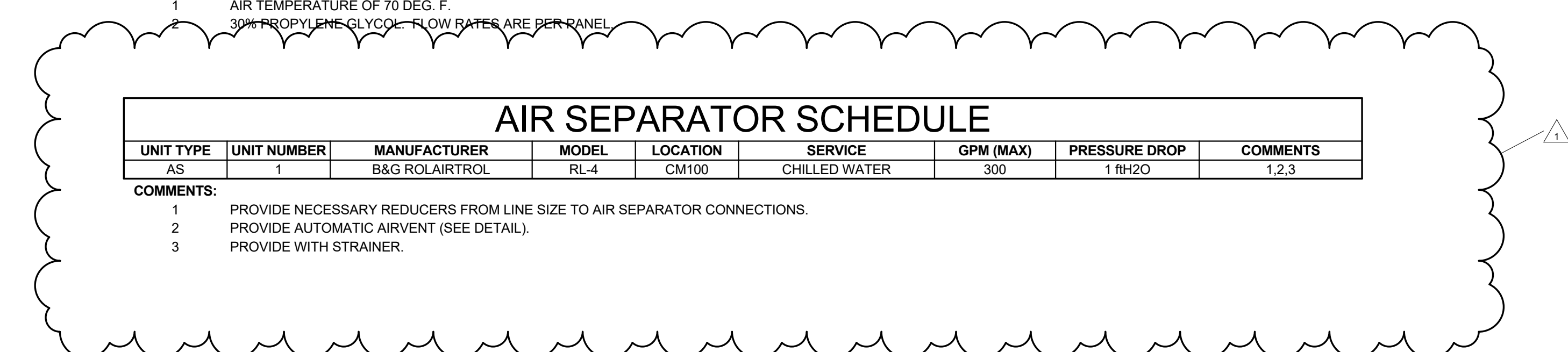
UNIT TYPE	UNIT NUMBER	MANUFACTURER	MODEL	LOCATION	SERVICE	GALLONS		LENGTH	DIAMETER	COMMENTS
						TOTAL	ACCEPT			
ET	1	WESSELS CO.	NLA 85	MECH MEZZANINE	HEATING WATER	23	23	37	16	
ET	2	WESSELS CO.	NLA 200	MECH MEZZANINE	CHILLED WATER	53	53	43	24	1,2,3

COMMENTS:
1 INITIAL FACTORY PRECHARGED SETTING SHALL BE 12 PSI.
2 INCLUDE AIR CHARGING VALVE.
3 PROVIDE AUTOMATIC AIRVENT (SEE DETAIL).

RADIANT PANEL SCHEDULE

UNIT TYPE	UNIT NUMBER	MANUFACTURER	MODEL	BTUH	GPM	AVERAGE WATER TEMPERATURE	AIR TEMPERATURE	PANEL LENGTH	PANEL WIDTH	COMMENTS

COMMENTS:
1 AIR TEMPERATURE OF 70 DEG. F.
2 30% PROPYLENE GLYCOL - FLOW RATES ARE PER PANEL.



AIR SEPARATOR SCHEDULE

UNIT TYPE	UNIT NUMBER	MANUFACTURER	MODEL	LOCATION	SERVICE	GPM (MAX)	PRESSURE DROP	COMMENTS
AS	1	B&G ROLAIRTROL	RL-4	CM100	CHILLED WATER	300	1 RH2O	1,2,3

COMMENTS:
1 PROVIDE NECESSARY REDUCERS FROM LINE SIZE TO AIR SEPARATOR CONNECTIONS.
2 PROVIDE AUTOMATIC AIRVENT (SEE DETAIL).
3 PROVIDE WITH STRAINER.

ROOF TOP UNIT SCHEDULE

UNIT TYPE	UNIT NUMBER	MANUFACTURER	MODEL	LOCATION	CFM	MIN O.A. CFM	E.S.P.	RPM	DX COOLING SECTION						ELECTRICAL			COMMENTS		
									EAT	LAT	CAP BTUH	AMB BTUH	SCRR	VOLTAGE	PHASES	MCA	DB		WB	DB
RTU	1	TRANE	HORIZON 8036	ROOF	1300	300	1.75 in-wg	1068	79 F	63 F	55 F	53 F	37600	95 F			460	3	18 A	1,2,3,4,5,6,7

COMMENTS:
1 SELECTED AT 3200 FT ELEVATION.
2 PROVIDE WITH ELECTRIC DISCONNECT.
3 PROVIDE WITH ECONOMIZER AND RELIEF EXHAUST FAN.
4 PROVIDE MERV 11 FILTER PRE-FILTER & BETWEEN MERV 8 PRE-FILTER A AND COIL.
5 PROVIDE WITH MERV 13 FILTER ROOF CURB.
6 ECM BACKWARD CURVED PLENUM SUPPLY FAN.

STEAM CONVERTER SCHEDULE

UNIT TYPE	UNIT NUMBER	MANUFACTURER	MODEL	LOCATION	SERVICE	GPM	WATER PRES. DROP	EWT	LWT	MBH	% GLYCOL	#NR STEAM PRES.	FOULING FACTOR	AREA (SF)	TRAP CAPACITY	COMMENTS	
HX	1	ARMSTRONG	WS-0802-200E-1-CSSSSNN-20	RM CM100	HEATING WATER	185	0.00 RH2O	110 F	140 F	2744	30	3009	50 psi	0.000015	18.2	6018	1,2,3,4
HX	2	ARMSTRONG	WS-0802-200E-1-CSSSSNN-20	RM CM100	HEATING WATER	185	0.00 RH2O	110 F	140 F	2744	30	3009	50 psi	0.000015	18.2	6018	1,2,3,4

COMMENTS:
1 HOT WATER SOLUTION BASED ON 30% PROPYLENE GLYCOL.
2 PROVIDE VACUUM BREAKER.
3 PROVIDE MOUNTING RACK(S) FOR CONVERTERS.
4 MAX WATER VELOCITY OF 4.5 FT/SEC.

TANK SCHEDULE

UNIT TYPE	UNIT NUMBER	MANUFACTURER	MODEL	LOCATION	SERVICE	SIZE		COMMENTS	
						TOTAL GALLONS	LENGTH		DIAMETER
ST		WESSELS	CBT-120	RM CM100	CHILLED WATER	120	60	24	1

COMMENTS:
1 PROVIDE WITH 4" FLANGE CONNECTIONS.



CONSULTANTS MECHANICAL / ELECTRICAL / PLUMBING: WPE West Plains Engineering, Inc. 1750 Rapid Road Rapid City, South Dakota 57702 Phone: 605-348-7455	STRUCTURAL: STONE GROUP ARCHITECTS Albertson Engineering, Inc. 3202 W. Main St. 4C Rapid City, South Dakota 57702 Phone: 605-343-9896	ARCHITECT OF RECORD A/E: STONE GROUP ARCHITECTS	STAMP 	Office of Construction and Facilities Management VA U.S. Department of Veterans Affairs	Drawing Title MECHANICAL SCHEDULES Approved:	Phase CONSTRUCTION DOCUMENTS FULLY SPRINKLERED	Project Title VA FM UPGRADE MENTAL HEALTH LOCK WARD Location FORT MEADE, SOUTH DAKOTA Issue Date 08/29/2022	Project Number VA #568-20-102 SGA #211937 Building Number #148 Drawing Number MJ-504
--	---	---	---------------	--	---	--	---	--

1 ADD#1 10-25-2022 Revision# Description Date:	
---	--