

# Division 22 | Plumbing

## Hydration Stations

### General Notes

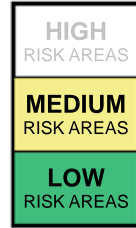
A remote cooler is required for chilled water dispensing and a drainage system is required for waste water.

Coordinate appropriate wall depth and location for remote chiller.

The top of the hydration station access door must be sloped.

### Installation Notes

Drain grilles must be securely fastened with tamper-resistant fasteners. Integral cup dispensers must be securely fastened to the filling station housing.



### Willoughby Industries, Inc.

[www.willoughby-ind.com](http://www.willoughby-ind.com)

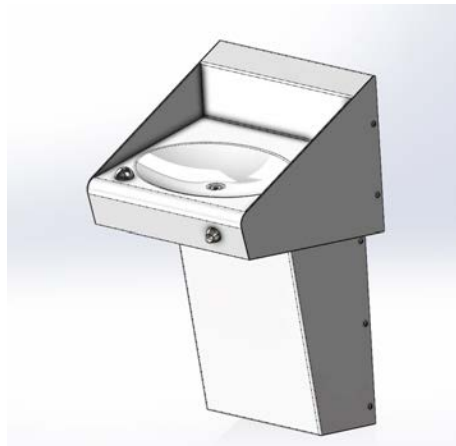
### WBDF-1519-HC Drinking Fountain with Shroud

#### Notes:

- Provide tamper-resistant sealant at joint between underside of lavatory and top edge of shroud where needed.

#### Cautions:

- Bubbler and Perforated drainage holes allow for wedging opportunities.
- A difficult but possible ligature opportunity may exist with this product. A series of shoelaces tied together may be looped over the drinking fountain and pulled back toward the support wall under the shroud.



# Division 22 | Plumbing

## Hydration Stations

### General Notes

A remote cooler is required for chilled water dispensing and a drainage system is required for waste water.



The top of the hydration station access door must be sloped.

### Installation Notes

Drain grilles must be securely fastened with tamper-resistant fasteners. Integral cup dispensers must be securely fastened to the filling station housing.

## Filtrine Manufacturing Company

[www.filtrine.com](http://www.filtrine.com)

### B103-C2-HR

16 gauge type 304 stainless steel with a satin finish. Hinged access door with a sloped top and keyed lock. Fits in 4" cavity wall.

**Note: Sharp corners and raw metal edges present opportunity for self-harm.**



# Division 22 | Plumbing

## Shower Heads



### Behavioral Safety Products

[www.besafeprod.com](http://www.besafeprod.com)

#### SH340 Ligature-Resistant Shower Head

Polished chrome-plated, wall mounted shower head with pivoting head, directing the water stream up or down to allow full coverage for patients of different heights. No side to side movement.



### Galvin Engineering

[www.galvinengineering.com](http://www.galvinengineering.com)

#### 40691 Shower Rose 65

Chrome plated Safe-Cell vandal resistant shower head.



### Chicago Faucets

[www.chicagofaucets.com](http://www.chicagofaucets.com)

#### 621-CP Institutional Shower Head

### Oddball Industries

[www.oddballindustries.com](http://www.oddballindustries.com)

#### SP-7 Shower Head



### Intersan

[www.aquadesignmfg.com/](http://www.aquadesignmfg.com/)

#### SNC01 Ceiling Mounted Shower Head



# Division 22 | Plumbing

## Shower Heads



**Moen**  
<http://pro.moen.com>

**M-Dura 8292**



**Speakman Company**  
[www.speakmancompany.com](http://www.speakmancompany.com)

**S-2460 Shower Head**



**Behavioral Safety Products**  
[www.besafeprod.com](http://www.besafeprod.com)

**SH330 Shower Head**



**Oddball Industries**  
[www.oddballindustries.com](http://www.oddballindustries.com)

**SP-7TF Tub Filler**



**Willoughby Industries, Inc.**  
[www.willoughby-ind.com](http://www.willoughby-ind.com)

**CSH Ligature-Resistant Head Assembly**



# Division 22 | Plumbing

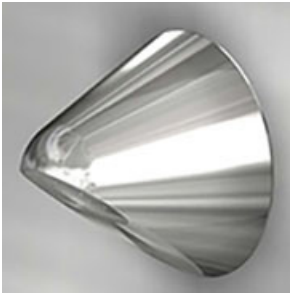
## Shower Heads



### Whitehall Manufacturing

[www.whitehall-mfg.com](http://www.whitehall-mfg.com)

#### CSH Conical Ligature-Resistant Shower Head



### Whitehall Manufacturing

[www.whitehall-mfg.com](http://www.whitehall-mfg.com)

#### WHD-SHD-W Conical Ligature-Resistant Wall Mounted Shower Head



### Whitehall Manufacturing

[www.whitehall-mfg.com](http://www.whitehall-mfg.com)

#### WHSHD-C Conical Ligature-Resistant Ceiling Mounted Shower Head



# Division 22 | Plumbing

## Shower Heads



### Symmons Industries, Inc.

[www.symmons.com](http://www.symmons.com)

#### 4-150 Shower Head (Institutional Type)

Note: Plastic Nozzle is easily removable and product does not fasten tightly to the wall, allowing ligature.



### Powers

[www.powerscontrols.com](http://www.powerscontrols.com)

#### 141 381 Institutional Shower Head

Note: Tie off ligature opportunity at end of shower head.

### Delta

[www.deltafaucet.com](http://www.deltafaucet.com)

#### 060793A Vandal Resistant Wall Mounting Shower Head

Note: Tie off ligature opportunity at end of shower head.



# Division 22 | Plumbing

## Hand Showers

### General Notes

Hand showers must be installed in addition to a primary ligature-resistant shower head at all ADA accessible showers.

### Code Notes

Only provide hand showers where required by code. Review and understand ANSI A117.1-2003, Section 608.6 exception, which allows a second fixed shower head in lieu of hand shower in specific situations.

### Installation Notes

When a fixed shower head and hand shower are both used, provide either a ligature-resistant diverter valve or separate ligature-resistant control system for each fixture.



### Intersan

[www.aquadesignmfg.com](http://www.aquadesignmfg.com)

#### 40707 Quick Release Handheld Shower

Hand held shower with ligature-resistant quick connect wall connection.



### Oddball Industries

[www.oddballindustries.com](http://www.oddballindustries.com)

#### SP-7WC Quick Connect Hand Shower

Hand held shower with quick disconnect adapter.

### Caution:

Tie-off ligature opportunity exists at hose bib. Install hand shower at the low end of the permitted reach range to minimize potential ligature risk from fixture.



# Division 22 | Plumbing

## Hand Showers

### General Notes

Hand showers must be installed in addition to a primary ligature-resistant shower head at all ADA accessible showers.



### Code Notes

Only provide hand showers where required by code. Review and understand ANSI A117.1-2003, Section 608.6 exception, which allows a second fixed shower head in lieu of hand shower in specific situations.



### Installation Notes

When a fixed shower head and hand shower are both used, provide either a ligature-resistant diverter valve or separate ligature-resistant control system for each fixture.

### Whitehall Manufacturing

[www.whitehall-mfg.com](http://www.whitehall-mfg.com)

### WHCHS Handheld Shower

Handheld shower with a ligature resistant adapter base.





# Division 22 | Plumbing

## Shower Controls & Activators

### General Notes

Best practice recommends controlled (limited) flow time. Various mechanisms and controllers can provide this option; some are factory set and some can be adjusted by staff. Review and select products accordingly.

Best practice recommends temperature control by resident. Several of the acceptable mechanisms don't provide this option. Review and select products accordingly.

### Installation Notes

When both shower heads and hand showers are provided, specify either a diverter valve or separate shower controls for both.



### Armstrong International, Inc.

[www.armstronginternational.com](http://www.armstronginternational.com)

**Sense DMV2 Water Temp Control**  
Stainless steel face plate is to be specified for all NYS-OMH facilities. Provide tamper-resistant sealant at perimeter of plate.

#### Cautions:

- Control buttons are plastic and have the potential to be damaged.
- Product can be specified with a plastic cover by facilities other than NYS-OMH, but should be used with caution due to the increased potential to be damage.



### Behavioral Safety Products

[www.besafeprod.com](http://www.besafeprod.com)

**SV230 Ligature-Resistant Shower Valve, Handle & Escutcheon Plate**



### Chicago Faucets

[www.chicagofaucets.com](http://www.chicagofaucets.com)

**1920-VOCLRCP Ligature-Resistant Shower Valve, Handle & Escutcheon Plate**



### Intersan

[www.aquadesignmfg.com](http://www.aquadesignmfg.com)

**50140 Ligature-Resistant Shower Diverter**



# Division 22 | Plumbing

## Shower Controls & Activators

### General Notes

Best practice recommends controlled (limited) flow time. Various mechanisms and controllers can provide this option; some are factory set and some can be adjusted by staff. Review and select products accordingly.

Best practice recommends temperature control by resident. Several of the acceptable mechanisms don't provide this option. Review and select products accordingly.

### Installation Notes

When both shower heads and hand showers are provided, specify either a diverter valve or separate shower controls for both.



### Leonard Valve Company

[www.leonardvalve.com](http://www.leonardvalve.com)

#### 4500 LR Series Aquatrol Pressure actuated mixing valve.

**Caution: This product does not meet ADA requirements for graspability.**



### Niekamp Tool Company

[www.niekampinc.com](http://www.niekampinc.com)

#### SSK-1022E Suicide Prevention Shower Handle

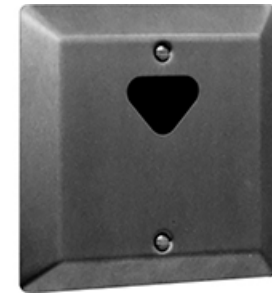


### Powers

[www.powerscontrols.com](http://www.powerscontrols.com)

#### 447 Infrared

HydroGuard ESP infrared sensor shower control.



### Powers

[www.powerscontrols.com](http://www.powerscontrols.com)

#### 447 Piezo

HydroGuard ESP pushbutton sensor shower control.



# Division 22 | Plumbing

## Shower Controls & Activators

### General Notes

Best practice recommends controlled (limited) flow time. Various mechanisms and controllers can provide this option; some are factory set and some can be adjusted by staff. Review and select products accordingly.

Best practice recommends temperature control by resident. Several of the acceptable mechanisms don't provide this option. Review and select products accordingly.

### Installation Notes

When both shower heads and hand showers are provided, specify either a diverter valve or separate shower controls for both.



### Oddball Industries

[www.oddballindustries.com](http://www.oddballindustries.com)

#### SP-10 Shower Mixing Valve

The SP-10 Mixing Valve is available with two different styles of ligature-resistant handles, designated A and B (shown).

#### Caution:

- A tamper-resistant fastener is not included and may be available for this product. A conventional fastener may be installed and filled with tamper-resistant sealant if tamper-resistant fastener is unavailable.



### Oddball Industries

[www.oddballindustries.com](http://www.oddballindustries.com)

#### SP-12 Diverter Valve

The SP-12 Diverter Valve is available with two different styles of ligature-resistant handles, designated A (shown) and B.

#### Cautions:

- This product (handle Style A) does not meet ADA requirements for graspability. May be difficult to operate when wet.
- A tamper-resistant fastener is not included and may be available for this product. A conventional fastener may be installed and filled with tamper-resistant sealant if tamper-resistant fastener is unavailable.



# Division 22 | Plumbing

## Shower Controls & Activators

### General Notes

Best practice recommends controlled (limited) flow time. Various mechanisms and controllers can provide this option; some are factory set and some can be adjusted by staff. Review and select products accordingly.

Best practice recommends temperature control by resident. Several of the acceptable mechanisms don't provide this option. Review and select products accordingly.

### Installation Notes

When both shower heads and hand showers are provided, specify either a diverter valve or separate shower controls for both.



### Symmons Industries, Inc.

[www.symmons.com](http://www.symmons.com)

#### 420 Series Showeroff Metering Showering System



### Whitehall Manufacturing

[www.whitehall-mfg.com](http://www.whitehall-mfg.com)

#### PBH Hemispherical Pushbutton

Specify with appropriate control valve assembly, one or two button options. Two buttons allows three preset temperatures (cold, warm & lukewarm).



### Whitehall Manufacturing

[www.whitehall-mfg.com](http://www.whitehall-mfg.com)

#### SV16 Tri-Lever Mixing Valve

Tri-lever handle, temperature/pressure balancing mixing valve.



### Whitehall Manufacturing

[www.whitehall-mfg.com](http://www.whitehall-mfg.com)

#### Ligature-Resistant Shower Diverter

Tri-lever handle diverter.



# Division 22 | Plumbing

## Shower Controls & Activators

**General Notes**

Best practice recommends controlled (limited) flow time. Various mechanisms and controllers can provide this option; some are factory set and some can be adjusted by staff. Review and select products accordingly.

Best practice recommends temperature control by resident. Several of the acceptable mechanisms don't provide this option. Review and select products accordingly.

**Installation Notes**

When both shower heads and hand showers are provided, specify either a diverter valve or separate shower controls for both.



**Willoughby**  
[www.willoughby-ind.com](http://www.willoughby-ind.com)

**TPLR Ligature-Resistant Shower Mixing Valve**



**Willoughby**  
[www.willoughby-ind.com](http://www.willoughby-ind.com)

**Electronic Piezo Switch**



**Willoughby**  
[www.willoughby-ind.com](http://www.willoughby-ind.com)

**DVLR Ligature-Resistant Shower Diverter Valve**



# Division 22 | Plumbing

## Shower Controls & Activators

### General Notes

Best practice recommends controlled (limited) flow time. Various mechanisms and controllers can provide this option; some are factory set and some can be adjusted by staff. Review and select products accordingly.

Best practice recommends temperature control by resident. Several of the acceptable mechanisms don't provide this option. Review and select products accordingly.

### Installation Notes

When both shower heads and hand showers are provided, specify either a diverter valve or separate shower controls for both.



### Bradley Corporation

[www.bradleycorp.com](http://www.bradleycorp.com)

#### HSC95 Ligature-Resistant Front-Mounted Panel Shower

**Note:** Looping ligature opportunity at the shower control knob.

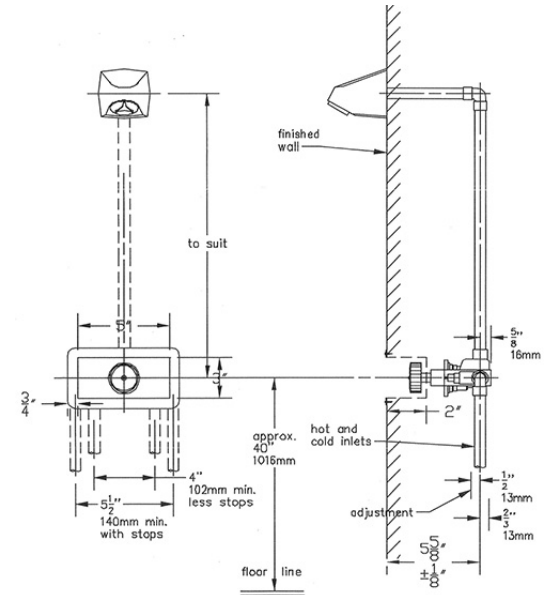


### Symmons Industries, Inc.

[www.symmons.com](http://www.symmons.com)

#### B-40904-1 Recessed Shower Activator

**Note:** Recessed shower activator is loopable and does not meet the ADA requirements for graspability.





# Division 23 | HVAC

## HVAC, General



### General Notes

Generally, ceiling mounted diffusers and grilles are more resistant to tampering, while wall-mounted elements provide more structural support for heavy and deep correction-grade assemblies.

### Diffusers & Grilles

The selection of diffusers and grilles must be carefully considered in light of all relevant patient risk criteria, mechanical performance requirements, and the installed substrate. Louver and grille opening size and spacing is a critical consideration for structural performance, air flow and ligature resistance. The most secure and ligature-resistant assemblies are typically very heavy, requiring careful consideration for structural support and the sequence of construction.

The selection of radiator covers must be carefully considered with respect to all relevant patient risk criteria, mechanical performance requirements, and the installed substrate. Perforated radiator covers pose a particular risk as they can be looped by a thin shoelace or similar object. Because these enclosures are typically surface-mounted, careful consideration must be given to the installation conditions at these covers to prevent wedging/looping opportunities at the installed substrate. Tamper-resistant sealant should be utilized to close all gaps at perimeter of enclosure.

Diffusers and grilles should be securely mounted in place using tamper-resistant fasteners. Diffusers and grilles, and all accessible elements of the housing should be attached to permanently affixed concealed back angles that are part of the assembly, or to wall or ceiling framing elements. Because of the inherent variations in the manufacturing process, specifiers should procure samples of diffusers prior to specifying. Variations in finish along with manufacturing tolerances have caused unsafe installations in some products where other instances of the same line have achieved safe installations.

It should be noted that all ligature-resistant diffusers and grilles reduce air flow. Evaluation of this reduction shall be performed prior to incorporation/replacement of these diffusers and grilles.

### Escape

Where escape is a primary risk criterion, diffusers and grilles should be reduced in size to the greatest extent possible. If diffusers and grilles are required to be large enough to allow passage, they should be securely mounted in place using welded joints and/or tamper-resistant fasteners. Diffusers and grilles, and all accessible elements of the housing should be attached to wall or ceiling framing elements and to the ductwork. Face plate construction should be thick enough to resist impact assaults and should not be removable, except with special tamper-resistant fastener tools. Passage restrictors should be permanently welded in the sleeve housing within the assemblies.

### Ligature Resistance

Where ligature resistance is a primary risk criterion, diffusers and grilles should be specifically designed with closely spaced welded deep "S" and "Z" shaped vanes that prevent looping, or they should be protected by heavy gauge metal face plates with small, tightly spaced, perforated holes. Perforated grilles with 11 ga. (1/8" thick) face plates with holes no larger than 1/8" in diameter on 3/16" staggered centers have been tested and tend to resist looping, however all perforated grilles should be reviewed prior to specification/installation as manufacturing tolerances and fabrication errors may result in conditions that allow looping.

Perforated diffusers, grilles and radiator covers utilizing the industry standard of 3/16" hole on 9/32" spacing pose a particular risk as they can be easily looped by a thin shoelace or similar object. Because these devices are prevalent in existing inpatient environments, they are identified in this document as ACCEPTED in medium risk environments and noted with specific USE WITH CAUTION language. It should be noted that smaller holes and tighter spacing of holes, and heavier gauge metal plate are also available from several manufacturers as standard options. OMH will continue to perform additional testing on perforated grilles and diffusers and is researching alternative solutions. The risk of utilizing these devices shall be noted and evaluated by each facility.

### Concealing Contraband

Where concealing contraband is a primary risk criterion, diffusers and grilles should be reduced in size to the greatest extent possible and securely mounted in place using tamper-resistant fasteners. Diffusers and grilles, and all accessible elements of the housing should be attached to wall or ceiling framing elements. Face plate construction should be thick enough to resist impact assaults and should not be removable, except with special tamper-resistant fastener tools.

### Additional Information

CO2 sensors are not currently available in any ligature-resistant form and should only be used where accessible to patients in low or medium risk areas. CO2 sensors may be installed within ducts in high risk areas, but this will not qualify for the USGBC's LEED credits for high occupancy mechanically ventilated spaces.



# Division 23 | HVAC

## Thermostats

**General Notes**  
Use covers and/or flat plate digital thermostats in high risk areas.



**Automated Logic Corporation**  
[www.automatedlogic.com](http://www.automatedlogic.com)

**Sensor Thermistor, Plate ALC/10K-2-SP with Logo**



**Kele**  
[www.kele.com](http://www.kele.com)

**KTP Series Stainless Steel Flush-Mount Thermistor and RTD Sensors**



# Division 23 | HVAC

## Diffusers & Grilles

### General Notes

The products listed in this section have been tested for patient safety on the patient accessible side only. Any concealed features of the products are incidental, and should not be assumed as "Accepted."

Perforated grilles and radiator covers utilizing the industry standard of 3/16" holes on 9/32" spacing are easily looped and may pose a ligature risk. Perforation patterns of 1/8" at 3/16" centers have been shown to resist looping but do not entirely eliminate this risk. The specifier must carefully review these products to determine whether the inherent risk of perforated products is appropriate for use prior to specification.

### Installation Notes

Careful detailing of diffusers and grilles with substrate is required.

Some of the diffusers included in this document have several options for mounting, installation, and overall configuration. Several of the mounting options may limit access resulting in inaccessible ductwork for cleaning and maintenance. The specifier must carefully review these conditions with owner's representative and maintenance personnel prior to specification and installation.

### Performance Criteria

The configuration of ligature-resistant grilles may offer significantly less free area than similarly-sized standard commercial grilles. Engineers shall size grilles appropriately to achieve the required free area.

### Finish

The metal finish of perforated and bladed diffusers affects their ligature-resistance. Specify a powder-coated paint finish.



### Anemostat

[www.anemostat.com](http://www.anemostat.com)

#### SSV22 Maximum Security Extra Heavy Duty Grille

With 3/16" x 3/16" Openings. White powder coat finish.

**Caution: Bladed diffusers pose a specific risk with the wedging of knotted cords, shoelaces, etc. Specifier must use caution when specifying these items**



### Anemostat

[www.anemostat.com](http://www.anemostat.com)

#### SSV26 Maximum Security Extra Heavy Duty Griller

With 2" (nom.) x 3/16" Openings. White powder coat finish.

**Caution: Bladed diffusers pose a specific risk with the wedging of knotted cords, shoelaces, etc. Specifier must use caution when specifying these items**



### Anemostat

[www.anemostat.com](http://www.anemostat.com)

#### SSV23 Maximum Security Extra Heavy Duty Grille

With 7/16" x 3/16" Openings. White powder coat finish.

**Caution: Bladed diffusers pose a specific risk with the wedging of knotted cords, shoelaces, etc. Specifier must use caution when specifying these items**



### Anemostat

[www.anemostat.com](http://www.anemostat.com)

#### SV432 Maximum Security Extra Heavy Duty Grille

With 2" (nom.) x 3/16" Openings. White powder coat finish.

**Caution: Bladed diffusers pose a specific risk with the wedging of knotted cords, shoelaces, etc. Specifier must use caution when specifying these items**



# Division 23 | HVAC

## Diffusers & Grilles

### General Notes

The products listed in this section have been tested for patient safety on the patient accessible side only. Any concealed features of the products are incidental, and should not be assumed as "Accepted."



Perforated grilles and radiator covers utilizing the industry standard of 3/16" holes on 9/32" spacing are easily looped and may pose a ligature risk. Perforation patterns of 1/8" at 3/16" centers have been shown to resist looping but do not entirely eliminate this risk. The specifier must carefully review these products to determine whether the inherent risk of perforated products is appropriate for use prior to specification.



### Installation Notes

Careful detailing of diffusers and grilles with substrate is required.



Some of the diffusers included in this document have several options for mounting, installation, and overall configuration. Several of the mounting options may limit access resulting in inaccessible ductwork for cleaning and maintenance. The specifier must carefully review these conditions with owner's representative and maintenance personnel prior to specification and installation.

### Performance Criteria

The configuration of ligature-resistant grilles may offer significantly less free area than similarly-sized standard commercial grilles. Engineers shall size grilles appropriately to achieve the required free area.

### Finish

The metal finish of perforated and bladed grilles affects their ligature-resistance. Specify a powder-coated paint finish.

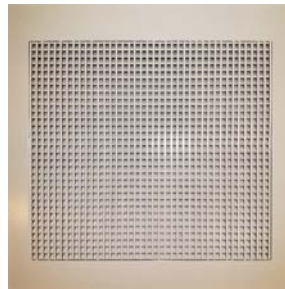
### Kees, Inc.

[www.kees.com](http://www.kees.com)

### SEG-13B Maximum Security Risk Resistant "V" Passageway Grille with Supports

With 12 gauge steel "V" Louvers with 3/16" openings and supports with 3/16" openings. 1" flange stitch welded. Sleeve continuously welded. Standard white finish.

**Caution: Bladed diffusers pose a specific risk with the wedging of knotted cords, shoelaces, etc. Specifier must use caution when specifying these items**



### Price

[www.priceindustries.com](http://www.priceindustries.com)

### MSRRC Maximum Security Risk Resistant Ceiling Diffuser

With 35 degree deflection blades at 5/16" blade spacing. B12 Standard White Finish.

**Caution: Bladed diffusers pose a specific risk with the wedging of knotted cords, shoelaces, etc. Specifier must use caution when specifying these items**



# Division 23 | HVAC

## Diffusers & Grilles

### General Notes

The products listed in this section have been tested for patient safety on the patient accessible side only. Any concealed features of the products are incidental, and should not be assumed as "Accepted."



Perforated grilles and radiator covers utilizing the industry standard of 3/16" holes on 9/32" spacing are easily looped and may pose a ligature risk. Perforation patterns of 1/8" at 3/16" centers have been shown to resist looping but do not entirely eliminate this risk. The specifier must carefully review these products to determine whether the inherent risk of perforated products is appropriate for use prior to specification.



### Installation Notes

Careful detailing of diffusers and grilles with substrate is required.



Some of the diffusers included in this document have several options for mounting, installation, and overall configuration. Several of the mounting options may limit access resulting in inaccessible ductwork for cleaning and maintenance. The specifier must carefully review these conditions with owner's representative and maintenance personnel prior to specification and installation.

### Performance Criteria

The configuration of ligature-resistant grilles may offer significantly less free area than similarly-sized standard commercial grilles. Engineers shall size grilles appropriately to achieve the required free area.

### Finish

The metal finish of perforated and bladed grilles affects their ligature-resistance. Specify a powder-coated paint finish.

### Behavioral Safety Products

[www.besafeprod.com](http://www.besafeprod.com)

#### EG450 Ligature Resistant Exhaust/Supply Grille

3/64" thick perforated face with 1/8" holes on staggered centers. White powder coat finish.

#### Cautions:

- Perforated diffusers, grilles and radiator covers pose a particular risk as they can be easily looped by a thin shoelace or similar object.
- Due to quality control inconsistencies, potential wedging ligature opportunity may exist at joint between perforated plate and frame.



### Price

[www.priceindustries.com](http://www.priceindustries.com)

#### MSPG with P5 Hole Pattern Perforated Face Security Grille

12 ga perforated face plate with 1/8" holes on 3/16" staggered centers. B12 Standard White Finish.

**Caution: Perforated diffusers, grilles and radiator covers pose a particular risk as they can be easily looped by a thin shoelace or similar object.**



# Division 23 | HVAC

## Diffusers & Grilles

**General Notes**

The products listed in this section have been tested for patient safety on the patient accessible side only. Any concealed features of the products are incidental, and should not be assumed as "Accepted."



Perforated grilles and radiator covers utilizing the industry standard of 3/16" holes on 9/32" spacing are easily looped and may pose a ligature risk. Perforation patterns of 1/8" at 3/16" centers have been shown to resist looping but do not entirely eliminate this risk. The specifier must carefully review these products to determine whether the inherent risk of perforated products is appropriate for use prior to specification.



**Installation Notes**

Careful detailing of diffusers and grilles with substrate is required.



Some of the diffusers included in this document have several options for mounting, installation, and overall configuration. Several of the mounting options may limit access resulting in inaccessible ductwork for cleaning and maintenance. The specifier must carefully review these conditions with owner's representative and maintenance personnel prior to specification and installation.

**Performance Criteria**

The configuration of ligature-resistant grilles may offer significantly less free area than similarly-sized standard commercial grilles. Engineers shall size grilles appropriately to achieve the required free area.

**Finish**

The metal finish of perforated and bladed grilles affects their ligature-resistance. Specify a powder-coated paint finish.

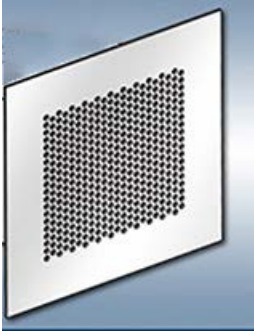
**Anemostat**

[www.anemostat.com](http://www.anemostat.com)

**ASSG Maximum Security Extra Heavy Duty Grille Steel Perforated Face**

With 3/16" diameter holes on 9/32" staggered centers. White powder coat finish.

**Caution: Perforated diffusers, grilles and radiator covers pose a particular risk as they can be easily looped by a thin shoelace or similar object.**



**Carnes Company**

[www.carnes.com](http://www.carnes.com)

**RSPA51 Suicide Deterrent Security R&G**

With 3/16" perforated face with 3/16" diameter holes on 9/32" staggered centers. White electrocoat acrylic baked enamel finish.

**Caution: Perforated diffusers, grilles and radiator covers pose a particular risk as they can be easily looped by a thin shoelace or similar object.**



# Division 23 | HVAC

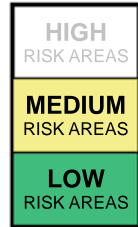
## Diffusers & Grilles

### General Notes

The products listed in this section have been tested for patient safety on the patient accessible side only. Any concealed features of the products are incidental, and should not be assumed as "Accepted."



Perforated grilles and radiator covers utilizing the industry standard of 3/16" holes on 9/32" spacing are easily looped and may pose a ligature risk. Perforation patterns of 1/8" at 3/16" centers have been shown to resist looping but do not entirely eliminate this risk. The specifier must carefully review these products to determine whether the inherent risk of perforated products is appropriate for use prior to specification.



### Installation Notes

Careful detailing of diffusers and grilles with substrate is required.



Some of the diffusers included in this document have several options for mounting, installation, and overall configuration. Several of the mounting options may limit access resulting in inaccessible ductwork for cleaning and maintenance. The specifier must carefully review these conditions with owner's representative and maintenance personnel prior to specification and installation.

### Performance Criteria

The configuration of ligature-resistant grilles may offer significantly less free area than similarly-sized standard commercial grilles. Engineers shall size grilles appropriately to achieve the required free area.

### Finish

The metal finish of perforated and bladed grilles affects their ligature-resistance. Specify a powder-coated paint finish.

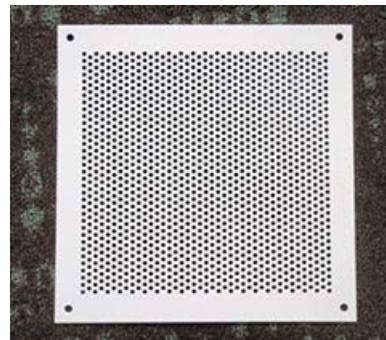
### Kees, Inc.

[www.kees.com](http://www.kees.com)

#### SEG-9SP3 Security Grille

14 ga steel perforated face with 3/16" diameter holes on 9/32" staggered centers. Two part polyurethane finish. White.

**Caution: Perforated diffusers, grilles and radiator covers pose a particular risk as they can be easily looped by a thin shoelace or similar object.**



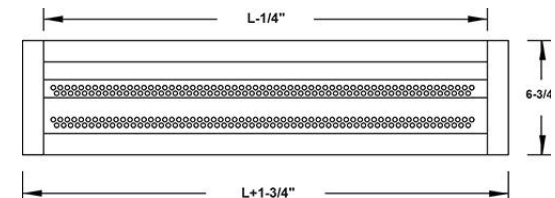
### Kees, Inc.

[www.kees.com](http://www.kees.com)

#### SEG-9LS3VH Security Diffuser

10 ga steel perforated face with 3/16" diameter holes on 9/32" staggered centers. Two part polyurethane finish. White.

**Caution: Perforated diffusers, grilles and radiator covers pose a particular risk as they can be easily looped by a thin shoelace or similar object.**



# Division 23 | HVAC

## Diffusers & Grilles

### General Notes

The products listed in this section have been tested for patient safety on the patient accessible side only. Any concealed features of the products are incidental, and should not be assumed as "Accepted."



Perforated grilles and radiator covers utilizing the industry standard of 3/16" holes on 9/32" spacing are easily looped and may pose a ligature risk. Perforation patterns of 1/8" at 3/16" centers have been shown to resist looping but do not entirely eliminate this risk. The specifier must carefully review these products to determine whether the inherent risk of perforated products is appropriate for use prior to specification.



### Installation Notes

Careful detailing of diffusers and grilles with substrate is required.



Some of the diffusers included in this document have several options for mounting, installation, and overall configuration. Several of the mounting options may limit access resulting in inaccessible ductwork for cleaning and maintenance. The specifier must carefully review these conditions with owner's representative and maintenance personnel prior to specification and installation.

### Performance Criteria

The configuration of ligature-resistant grilles may offer significantly less free area than similarly-sized standard commercial grilles. Engineers shall size grilles appropriately to achieve the required free area.

### Finish

The metal finish of perforated and bladed grilles affects their ligature-resistance. Specify a powder-coated paint finish.

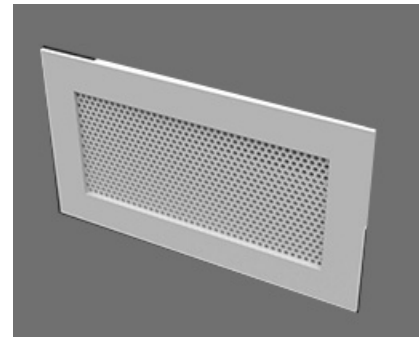
### Titus

[www.titus-hvac.com](http://www.titus-hvac.com)

#### SG-SD Maximum Security Grille

3/16" perforated face with 3/16" diameter holes on 9/32" staggered centers. #26 White Finish.

**Caution: Perforated diffusers, grilles and radiator covers pose a particular risk as they can be easily looped by a thin shoelace or similar object.**



### Carnes Company

[www.carnes.com](http://www.carnes.com)

#### RSPA41 Sleeved Security R&G Suicide Deterrent Supply Grille

12 ga hot rolled steel louvers installed at 3/8" centers. #11 Bright White finish.



# Division 26 | Electrical





# Division 26 | Electrical

## Receptacles & Cover Plates, General



### General Notes

Provide hospital grade, tamper-resistant receptacles with arc fault and ground fault interruption in all patient accessible areas of all psychiatric hospitals. When it is not feasible to provide dual protection at the receptacle location, provide dual protection circuit breakers for all circuits with devices in patient accessible areas. See descriptions below for details.

In new construction or substantial renovations, where arc fault and ground fault interruption are both provided at the receptacle, provide electrical cover plates that are either thermoplastic nylon or metal. In minor renovation projects, where providing arc fault and ground fault interruption are beyond the scope of the project, provide only metal electrical cover plates. In all cases, fasten cover plates to receptacle with tamper-resistant fasteners that are accepted in the NYS-OMH Patient Safety Standards. Two fasteners are recommended, though not required, for all cover plates.

### Hospital Grade Receptacles

Hospital grade receptacles are on emergency circuits and receive back-up power from a generator. Review applicable codes to identify areas Hospital Grade Receptacles are required.

### Tamper-resistant Receptacles

Tamper-resistant receptacles feature built in safety shutters that block foreign objects from being inserted into the receptacle. Shutters remain closed if an object is inserted into one side of the receptacle. The shutters open only when a two bladed or grounded plug is inserted. Excessive tampering may compromise the receptacle.

Provide tamper-resistant receptacles with arc fault and ground fault interruption in all patient accessible areas of all psychiatric hospitals.

### AFCI (Arc Fault Circuit Interrupter) Protection

AFCI protection guards against damage or fires which can result from arcing and sparking that can arise from deteriorated wires, poor connections and breaches in wire insulation. Arc fault self-harm can be induced by holding two insulated conductors (e.g. paper clips while holding them in flexible plastic or rubber as an insulator) and bending them close enough together to get an electrical current to arc between them, perhaps in an effort to create a cigarette lighter or start a fire.

### GFCI (Ground Fault Circuit Interrupter) Protection

GFCI protection guards against ground faults, and are an effective means of preventing electrical shocks. Ground fault self-harm can be induced by grounding oneself (e.g. to the floor) while holding one conductor (i.e., paper clips) in the hot side of the receptacle, causing the electrical current to flow through oneself to the ground.

# Division 26 | Electrical

## Receptacles & GFCI/AFCI Circuit Breakers

### General Notes

See comments on previous general notes page.

Provide tamper-resistant receptacles with arc fault and ground fault interruption in all patient accessible areas of all psychiatric hospitals.

Provide dual protection circuit breakers for all circuits with devices in patient accessible areas when it is not feasible to provide dual protection at the receptacle location.

Circuit breakers are located within secure electrical panels outside of the patient environment. They are included in this document because they enhance the patient safety of the built environment.



### Cooper Lighting Solutions

[www.cooperlighting.com](http://www.cooperlighting.com)

#### TR8200 Series Hospital Grade Receptacles

Tamper-resistant.

### Legrand

[www.legrand.us](http://www.legrand.us)

#### PTTR62HW Series Extra Heavy Duty Hospital Grade Receptacles

Tamper-resistant.

### Leviton

[www.leviton.com](http://www.leviton.com)

#### 8200-SG Series Tamper-resistant Receptacles



### Cooper Lighting Solutions

[www.cooperlighting.com](http://www.cooperlighting.com)

#### CHF Circuit Breaker

### General Electric

[www.ge.com](http://www.ge.com)

#### Dual Function Circuit Breaker

### Schneider Electric

[www.schneider-electric.com](http://www.schneider-electric.com)

#### QO Dual Function Circuit Breakers

### Siemens

[www.usa.siemens.com](http://www.usa.siemens.com)

#### Dual Function Circuit Breaker



# Division 26 | Electrical Wall Plates

**General Notes**

Thermoplastic nylon wall plates are recommended. They are more flexible than thermoset (urea) products and have a shinier, glossy finish. Molded thermoplastic nylon wall plates also perform for maximum resistance to impact, abrasion, fading and discoloration. Nylon is resistant to stresses associated with high abuse applications.

**Installation Notes**

Nylon is pliable so it should be installed in a bed of tamper resistant sealant.



**Legrand**  
[www.legrand.us](http://www.legrand.us)

**Unbreakable Nylon Wall Plates**

**Leviton**  
[www.leviton.com](http://www.leviton.com)

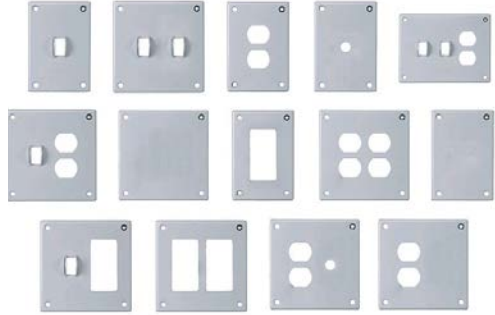
**Unbreakable Nylon Wall Plates**



**Hubbell**  
[www.hubbell-wiring.com](http://www.hubbell-wiring.com)

**Security Wall Plates (Metal)**

**Caution: Intended for use in OMH facilities only when other alternatives are considered unsuitable due to excessive tampering by patients.**



# Division 26 | Electrical Wall Plates

**General Notes**

Thermoplastic nylon wall plates are recommended. They are more flexible than thermoset (urea) products and have a shinier, glossy finish. Molded thermoplastic nylon wall plates also perform for maximum resistance to impact, abrasion, fading and discoloration. Nylon is resistant to stresses associated with high abuse applications.

Polycarbonate is a thermoset plastic, so doesn't perform as well in this application.

**Installation Notes**

Nylon is pliable so it should be installed in a bed of tamper resistant sealant.



**Cortech USA**  
[www.cortechusa.com](http://www.cortechusa.com)

**Tiger Plates**

**Caution: Intended for use in OMH facilities only when other alternatives are considered unsuitable due to excessive tampering by patients.**

**Installation Note: Not suitable for gypsum wallboard installations. Plates fasten directly to the wall in lieu of typical recessed back box. Recommended for concrete or masonry walls only.**



**Kenall Manufacturing**  
[www.kenall.com](http://www.kenall.com)

**Mighty Mac WSP/WPP Series Wall Plates**

**Caution: Intended for use in OMH facilities only when other alternatives are considered unsuitable due to excessive tampering by patients.**



# Division 26 | Electrical

## Light Fixtures, General



### Performance Criteria

Provide lighting that meets the following criteria:

- Lighting: High efficiency, maintaining visual performance where applicable. Provide dimmable ballasts as required.
- Lamps: NYS-OMH standard is LED due to its high efficiency, performance, reliability, and cost effectiveness.
- Diffuser|Lens: Provide 1/8" thick minimum polycarbonate prismatic or translucent lens. Lens frame requires enough edge bite in order to retain the lens during maximum deflection.
- Housing: Durable and indestructible.
- Exposed Fasteners: To be tamper-resistant with finish to match housing.
- Maintenance: Specify fixtures with standard replacement parts, lamps and ballasts. Consider the minimum number of security fasteners required for patient safety.
- Approvals: Underwriters Laboratories (UL) and others as applicable.

### Installation Notes

Install light fixtures flush with substrate. It is critical to ensure there are no gaps. Any remaining gaps shall be filled with tamper-resistant sealant.

Coordinate lighting fixture specifications with new/existing ceiling substrate prior to ordering. When installing light fixtures into a medium or high risk ceiling system, it is imperative that the installation of the light fixture does not diminish the patient safety of the ceiling system as a whole. Therefore, it is recommend to mechanically fasten light fixtures to the ceiling system in order to maintain the appropriate level of patient safety at the ceiling plane.

The following properties identified in the product descriptions of each fixture included in this section were present in the sample tested for patient safety:

- Size
- Required specification options
- Mounting configuration
- Inner lens thickness
- Outer lens thickness
- Housing
- Finish

Altering any of these properties may impact patient safety and therefore warrants additional testing of a sample fixture for patient safety evaluation.

### Additional Notes

Verify photometrics of light fixtures with polycarbonate lenses during the project design.

The Office of Mental Health Lighting Standards Handbook is intended for use by Plant Superintendents and Design Consultants as a reference guide when replacing light fixtures. The Handbook details which energy saving options may be best for each application. It is important to also reference the Office of Mental Health Patient Safety Standard Guidelines when replacing or specifying light fixtures in patient areas. OMH reinforces the importance of patient safety before energy efficiency in their facilities in all patient areas.

# Division 26 | Electrical

## Light Fixtures, Interior, General, Surface-mounted

**General Notes**

See comments on previous general notes page.

**Specification Notes**

Coordinate lighting fixture specifications with new/existing ceiling substrate prior to ordering.

Only those models listed have been tested. Models with different options in any category warrant additional testing of a sample fixture.



**Alva Lighting**

[www.alvalight.com](http://www.alvalight.com)

**Priscilla**

Size: 19"x8.5"  
 Required Options: BH (behavioral Health)  
 Mounting: drywall wall (vertical orientation only)  
 Outer Lens: 3.1mm vandal resistant architectural resin (by Alva)  
 Housing: 1.5mm stamped marine grade aluminum end caps  
 Finish: industrial grade powder coat.



**Kenall Manufacturing**

[www.kenall.com](http://www.kenall.com)

**Enviroseal ES5 Linear Wraparound**

Size: 2'  
 Mounting: drywall ceiling & wall (horizontal orientation only)  
 Inner Lens: prismatic polycarbonate  
 Outer Lens: 0.125" pearlescent polycarbonate  
 Housing: seam welded 20 gauge stainless steel  
 Finish: white powder coat



# Division 26 | Electrical

## Light Fixtures, Interior, General, Surface-mounted

**General Notes**

See comments on previous general notes page.

Quality control of lighting fixtures is known to vary. Pay close attention to exposed edges of metal housing and flanges for sharpness.

**Specification Notes**

Coordinate lighting fixture specifications with new/existing ceiling substrate prior to ordering.

Only those models listed have been tested. Models with different options in any category warrant additional testing of a sample fixture.



**Kenall Manufacturing**

[www.kenall.com](http://www.kenall.com)

**MedMaster Behavioral Health  
MMAC14, MMAC22, MMAC24**

Size: 1'x4', 2'x2', 2'x4'  
 Mounting: drywall ceiling only  
 Inner Lens: (standard) extruded high efficiency frosted DR acrylic  
 Outer Lens: 0.187" clear polycarbonate  
 Housing: 14 gauge cold rolled steel, spot welded.  
 Finish: TGIC polyester powder coat



**Kenall Manufacturing**

[www.kenall.com](http://www.kenall.com)

**WCBU Mighty Mac**

Size: 4'  
 Mounting: drywall ceiling & wall (horizontal orientation only)  
 Inner Lens: prismatic polycarbonate  
 Outer Lens: clear polycarbonate  
 Housing: 14 gauge cold rolled steel.  
 Finish: TGIC polyester powder coat



# Division 26 | Electrical

## Light Fixtures, Interior, General, Surface-mounted

**General Notes**  
See comments on previous general notes page.

**Specification Notes**  
Coordinate lighting fixture specifications with new/existing ceiling substrate prior to ordering.

Only those models listed have been tested. Models with different options in any category warrant additional testing of a sample fixture.



**Kenall Manufacturing**  
[www.kenall.com](http://www.kenall.com)

**MightyMac SSA**

Size: 1'x2'  
Required Options: must specify inner and outer lens  
Mounting: drywall ceiling & wall  
Inner Lens: prismatic polycarbonate  
Outer Lens: clear polycarbonate  
Housing: 16 gauge cold rolled steal.  
Clamshell housing with completely concealed internal dropslot piano hinge.  
Finish: white TGIC polyester powder coat



**L.C. Doane Company**  
[www.lcdoane.com](http://www.lcdoane.com)

**SJ LED**

Size: 2'  
Mounting: wall only (horizontal orientation only)  
Inner Lens: optic plus acrylic lens  
Outer Lens: 0.187 clear polycarbonate  
Housing: 16 gauge cold rolled steel  
Finish: polyester powder coat





# Division 26 | Electrical

## Light Fixtures, Interior, General, Surface-mounted



**General Notes**

See comments on previous general notes page.

**Specification Notes**

Coordinate lighting fixture specifications with new/existing ceiling substrate prior to ordering.

Only those models listed have been tested. Models with different options in any category warrant additional testing of a sample fixture.



**Luminaire LED, Inc.**

[www.luminairelighting.com](http://www.luminairelighting.com)

**VPF-43, VPF-83, VPF-123**

Size: 4.35" x 37.72", 8.75" x 37.72", 12.4" x 37.72"

Mounting: drywall ceiling & wall (horizontal orientation only)

Outer Lens: UV stabilized opal polycarbonate with infrared prisms.

Housing: marine grade heat treated extruded aluminum

Finish: polyester powder coat



**Luminaire LED, Inc.**

[www.luminairelighting.com](http://www.luminairelighting.com)

**Supermax Wall Mount WM11, WM12, WM13**

Size: 11"x15", 11"x26", 11"x37"

Mounting: drywall ceiling & wall (horizontal orientation only)

Inner Lens: prismatic polycarbonate

Outer Lens: 0.25" clear polycarbonate

Housing: one piece die formed 14 gauge cold rolled steel

Finish: polyester powder coat



# Division 26 | Electrical

## Light Fixtures, Interior, General, Surface-mounted

**General Notes**  
See comments on previous general notes page.

**Specification Notes**  
Coordinate lighting fixture specifications with new/existing ceiling substrate prior to ordering.

Only those models listed have been tested. Models with different options in any category warrant additional testing of a sample fixture.



**Luminaire LED, Inc.**  
[www.luminairelighting.com](http://www.luminairelighting.com)

### Supermax Corner Mount CM12, CM13, CM14

Size: 9"x21", 9"x35", 9"x49"  
Mounting: wall only (vertical orientation must be flush to ceiling)  
Inner Lens: prismatic polycarbonate  
Outer Lens: 0.25" clear polycarbonate  
Housing: One piece die formed 14 gauge cold rolled steel  
Finish: polyester powder coat



**Luminaire LED, Inc.**  
[www.luminairelighting.com](http://www.luminairelighting.com)

### Supermax Surface Mount SMP12, SMP13, SMP22, SMP23

Size: 11"x23", 11"x37", 17"x23", 17"x37"  
Required Options: must specify inner and outer lens  
Mounting: drywall ceiling & wall  
Inner Lens: prismatic polycarbonate  
Outer Lens: 0.25" clear polycarbonate  
Housing: 16 gauge cold rolled steel  
Finish: polyester powder coat



# Division 26 | Electrical

## Light Fixtures, Interior, General, Surface-mounted

**General Notes**  
See comments on previous general notes page.

**Specification Notes**  
Coordinate lighting fixture specifications with new/existing ceiling substrate prior to ordering.

Only those models listed have been tested. Models with different options in any category warrant additional testing of a sample fixture.



**New Star Lighting**  
[www.newstarlighting.com](http://www.newstarlighting.com)

**StarTile LED MAX (AGM11, AGM14, AGM22, AGM24)**

Size: 1'x1', 1'x4', 2'x2', 2'x4'  
Mounting: drywall ceiling only  
Inner Lens: polycarbonate  
Outer Lens: 0.25" clear polycarbonate  
Housing: extruded aluminum frame in 14 gauge cold rolled steel frame with beveled edges  
Finish: polyester powder coat



**Paco Lighting**  
[www.pacolighting.com](http://www.pacolighting.com)

**MURA 45"**

Size: 45"  
Required Options: heavy security level (H)  
Mounting: drywall (horizontal orientation only)  
Outer Lens: 3/8" clear polycarbonate (M5)  
Inner Lens: white opal underlay (H5)  
Housing: 14 gauge cold-rolled steel  
Finish: baked white enamel powder coat



# Division 26 | Electrical

## Light Fixtures, Interior, General, Surface-mounted

### General Notes

See comments on previous general notes page.

Only those models listed have been tested. Models with different options in any category warrant additional testing of a sample fixture.

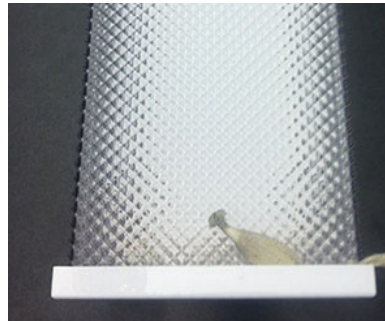


### Kenall Manufacturing

[www.kenall.com](http://www.kenall.com)

#### Ranger Strilight

**Note:** Wedging ligature opportunity at lens and housing.



### Kenall Manufacturing

[www.kenall.com](http://www.kenall.com)

#### Millenium Round MR13FL & MR17L Series, Ceiling & Wall Mount

**Note:** Presents opportunity for ligature in both mounting orientations.



### Kenall Manufacturing

[www.kenall.com](http://www.kenall.com)

#### Millenium Stretch MLHA8-R, MLHA12-R

**Note:** Manufacturer does not recommend fixture for use in Behavioral Health settings.

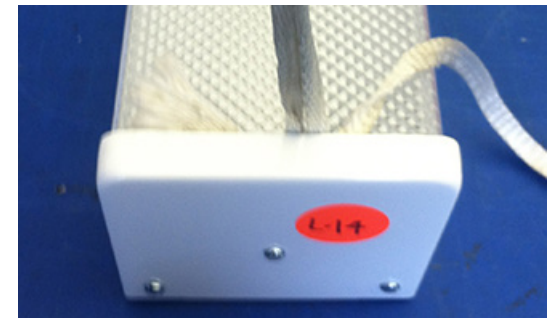


### Legion Lighting Co., Inc.

[www.legionlighting.com](http://www.legionlighting.com)

#### Vandalex Series 19

**Note:** Wedging ligature opportunity at lens and housing.



# Division 26 | Electrical

## Light Fixtures, Interior, General, Surface-mounted

### General Notes

See comments on previous general notes page.

### Specification Notes

Coordinate lighting fixture specifications with new/existing ceiling substrate prior to ordering.

Only those models listed have been tested. Models with different options in any category warrant additional testing of a sample fixture.



### Luminaire LED, Inc.

[www.luminairelighting.com](http://www.luminairelighting.com)

### Swoop 610 Series

**Note: Presents opportunity for downward ligature in both mounting orientations.**



# Division 26 | Electrical

## Light Fixtures, Interior, General, Recessed

**General Notes**  
See comments on previous general notes page.

**Specification Notes**  
Coordinate lighting fixture specifications with new/existing ceiling substrate prior to ordering.

Only those models listed have been tested. Models with different options in any category warrant additional testing of a sample fixture.



### Advantage Environmental Lighting

[www.aelnow.com/](http://www.aelnow.com/)

#### CLD24 Recessed LED Clean Room

Size: 2'x4'  
 Mounting: drywall and metal security ceiling  
 Outer Lens: 0.187" clear polycarbonate  
 Inner Lens: 0.125" prismatic polycarbonate  
 Housing: 0.063" aluminum and 18 gauge stainless steel door  
 Finish: white TGIC polyester powder coat

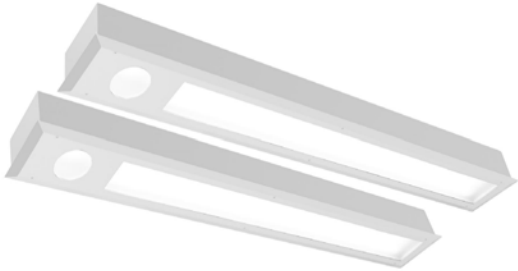


### Amico Lighting Solutions

[www.amico.com](http://www.amico.com)

#### Behavioral Solar Duo Med Multifunction LED

Size: 6"x48"  
 Required Options: VRA (vandal resistant; 0.118" clear polycarbonate)  
 Mounting: drywall and metal security ceiling  
 Outer Lens: 0.118" clear polycarbonate  
 Housing: 20 gauge cold rolled steel  
 Finish: white urethane powder coat finish, hospital grade



# Division 26 | Electrical

## Light Fixtures, Interior, General, Recessed

**General Notes**  
See comments on previous general notes page.

**Specification Notes**  
Coordinate lighting fixture specifications with new/existing ceiling substrate prior to ordering.

Only those models listed have been tested. Models with different options in any category warrant additional testing of a sample fixture.

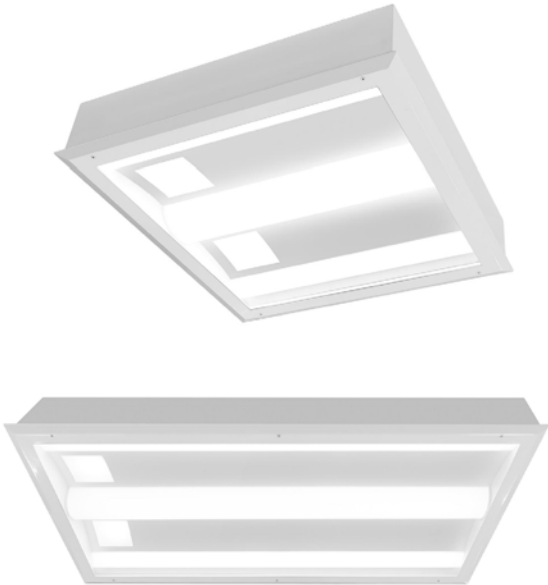


### Amico Lighting Solutions

[www.amico.com](http://www.amico.com)

#### Behavioral Solar Eclipse Multifunction LED

Size: 2'x2', 2'x4'  
 Required Options: VRA (vandal resistant; 0.118" clear polycarbonate)  
 Mounting: drywall and metal security ceiling  
 Outer Lens: 0.118" clear polycarbonate  
 Housing: 20 gauge cold rolled steel  
 Finish: white urethane powder coat finish, hospital grade



### Cooper Lighting Solutions

[www.cooperlighting.com](http://www.cooperlighting.com)

#### Fail-Safe FMR HS LED Recessed Flange Confinement

Size: 1'x1', 1'x2', 1'x4', 2'x2', 2'x4'  
 Required Options: HS (high security)  
 Mounting: drywall and metal security ceiling  
 Inner Lens: prismatic polycarbonate  
 Outer Lens: clear polycarbonate  
 Housing: 16 gauge die-formed cold rolled steel body with welded corners.  
 Finish: polyester powder coat



# Division 26 | Electrical

## Light Fixtures, Interior, General, Recessed

**General Notes**

See comments on previous general notes page.

**Specification Notes**

Coordinate lighting fixture specifications with new/existing ceiling substrate prior to ordering.

Only those models listed have been tested. Models with different options in any category warrant additional testing of a sample fixture.



**Hubbell Lighting**

[www.hubbellhealthcare.com](http://www.hubbellhealthcare.com)

**MediMode Behavioral**

Size: 2'x4'  
 Mounting: drywall and metal security ceiling  
 Outer Lens: 0.25" clear polycarbonate  
 Housing: 20 gauge seam welded cold rolled steel housing with 18 gauge cold rolled steel flange. 18 gauge cold rolled steel door frame  
 Finish: Polyester white powder coat with antimicrobial additive



**Kenall Manufacturing**

[www.kenall.com](http://www.kenall.com)

**MedMaster Behavioral Health  
 MMAC14, MMAC22, MMAC24**

Size: 1'x4', 2'x2', 2'x4'  
 Mounting: drywall and metal security ceiling  
 Inner Lens: (standard) extruded high efficiency frosted DR acrylic  
 Outer Lens: 0.187" clear polycarbonate  
 Housing: 14 gauge cold rolled steel, spot welded.  
 Finish: TGIC polyester powder coat





# Division 26 | Electrical

## Light Fixtures, Interior, General, Recessed

**General Notes**  
See comments on previous general notes page.

**Specification Notes**  
Coordinate lighting fixture specifications with new/existing ceiling substrate prior to ordering.

Only those models listed have been tested. Models with different options in any category warrant additional testing of a sample fixture.



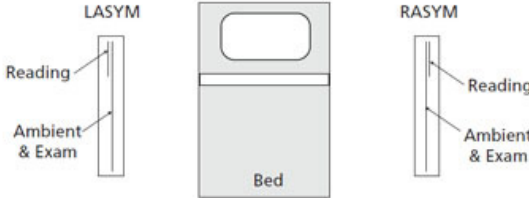
**Kenall Manufacturing**  
[www.kenall.com](http://www.kenall.com)

### MedMaster Behavioral Health SafeSlot Luminaire BHAERS4

Size: 4"x4' (2)  
Required Options: FL (Flange)  
Mounting: drywall and metal security ceiling  
Outer Lens: 0.187" clear polycarbonate  
Housing: extruded aluminum  
Finish: TGIC polyester powder coat



LUMINAIRE ORIENTATION / LAYOUT  
(must be specified in pairs)



**Kenall Manufacturing**  
[www.kenall.com](http://www.kenall.com)

### MedMaster Behavioral Health SafeSlot Luminaire BHRS4

Size: 2', 3', 4', 6', 8'  
Required Options: FL (flange)  
Mounting: drywall and metal security ceiling  
Outer Lens: 0.187" diffused polycarbonate  
Housing: extruded aluminum  
Finish: TGIC polyester powder coat



# Division 26 | Electrical

## Light Fixtures, Interior, General, Recessed

**General Notes**  
See comments on previous general notes page.

**Specification Notes**  
Coordinate lighting fixture specifications with new/existing ceiling substrate prior to ordering.

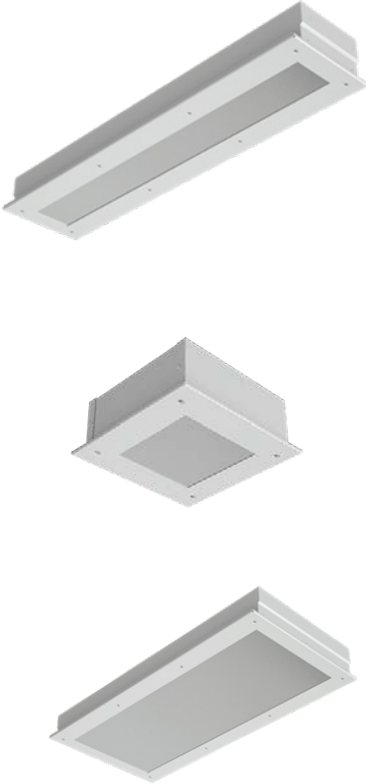
Only those models listed have been tested. Models with different options in any category warrant additional testing of a sample fixture.



**Kenall Manufacturing**  
[www.kenall.com](http://www.kenall.com)

### Mighty Mac RMCA, RMCD, RQCA Series

Size: 1'x2', 1'x4', 1'x1', 2'x2', 2'x4'  
Required Options: white fasteners  
Mounting: drywall and metal security ceiling  
Inner Lens: 0.125" prismatic polycarbonate  
Outer Lens: 0.125" clear polycarbonate  
Housing: 16 gauge cold rolled steel  
Finish: TGIC polyester powder coat



**Kurtzon**  
[www.kurtzon.com](http://www.kurtzon.com)

### VL-RB-LED

Size: 2'x2'  
Required Options: RB (recessed basket)  
Mounting: drywall and metal security ceiling  
Outer Lens: 0.125" clear flat polycarbonate  
Housing: 18 gauge cold rolled steel housing and door.  
Finish: polyester powder coat



# Division 26 | Electrical

## Light Fixtures, Interior, General, Recessed

**General Notes**

See comments on previous general notes page.

**Specification Notes**

Coordinate lighting fixture specifications with new/existing ceiling substrate prior to ordering.

Only those models listed have been tested. Models with different options in any category warrant additional testing of a sample fixture.



**Luminaire LED, Inc.**  
[www.luminairelighting.com](http://www.luminairelighting.com)

**Supermax Recessed Mount RM12, RM22**

Size: 1'x2', 2'x2'  
 Mounting: drywall and metal security ceiling  
 Inner Lens: 0.156" prismatic polycarbonate  
 Outer Lens: 0.25" clear polycarbonate  
 Housing: 16 gauge cold rolled steel housing and 14 gauge cold rolled steel door  
 Finish: polyester powder coat



**Lux Illuminaire**  
[www.luxilluminaire.com](http://www.luxilluminaire.com)

**EOS4.0-R-V Recessed Vandal**

Size: 5'  
 Required Options: FT flange trim  
 Mounting: drywall ceiling  
 Inner Lens: n/a  
 Outer Lens: frosted polycarbonate  
 Housing: extruded aluminum  
 Finish: white polyester powder coat

**Caution Note: Tamper resistant sealant shall be provided around entire perimeter of fixture for security against ceiling substrate.**



# Division 26 | Electrical

## Light Fixtures, Interior, General, Recessed

**General Notes**  
See comments on previous general notes page.

**Specification Notes**  
Coordinate lighting fixture specifications with new/existing ceiling substrate prior to ordering.

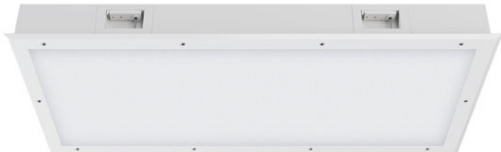
Only those models listed have been tested. Models with different options in any category warrant additional testing of a sample fixture.



**L.C. Doane Company**  
[www.lcdoane.com](http://www.lcdoane.com)

**CRC 2x2**

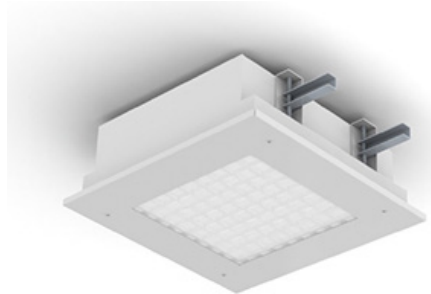
Size: 2'x2'  
Mounting: drywall and metal security ceiling  
Inner Lens: optic plus acrylic lens  
Outer Lens: 0.187 clear polycarbonate  
Housing: 18 ga cold rolled steel  
Finish: polyester powder coat



**New Star Lighting**  
[www.newstarlighting.com](http://www.newstarlighting.com)

**Confinement Series  
37M and 57M Models**

Size: 2'x2' (37M); 1'x1' (57M)  
Mounting: drywall and metal security ceiling  
Inner Lens: 0.125" prismatic polycarbonate  
Outer Lens: 0.25" clear polycarbonate  
Housing: Die formed 16gauge cold rolled steel, seam welded and ground smooth.  
Finish: polyester powder coat



# Division 26 | Electrical

## Light Fixtures, Interior, General, Recessed

**General Notes**  
See comments on previous general notes page.

**Specification Notes**  
Coordinate lighting fixture specifications with new/existing ceiling substrate prior to ordering.

Only those models listed have been tested. Models with different options in any category warrant additional testing of a sample fixture.



**New Star Lighting**  
[www.newstarlighting.com](http://www.newstarlighting.com)

**AuraMed AATB14, AATB22, AATB24**

Size: 1'x4', 2'x2', 2'x4'  
Required Options: O (overlapped door frame)  
Mounting: drywall and metal security ceiling  
Inner Lens: (standard) opal polycarbonate  
Outer Lens: 0.25" clear polycarbonate  
Housing: 16 gauge cold rolled steel  
Finish: polyester powder coat



**Paco Lighting**  
[www.pacolighting.com](http://www.pacolighting.com)

**MRPA4 Behavioral LED**

Size: 2'x2', 2'x4'  
Required Options: M security level; PB (perforated basket); F (flange)  
Mounting: drywall ceiling  
Inner lens: n/a  
Outer Lens: 0.25" clear polycarbonate (M4)  
Housing: 16 gauge with 14 gauge faceplate  
Finish: white polyester powder coat



# Division 26 | Electrical

## Light Fixtures, Interior, General, Recessed

**General Notes**  
See comments on previous general notes page.

**Specification Notes**  
Coordinate lighting fixture specifications with new/existing ceiling substrate prior to ordering.

Only those models listed have been tested. Models with different options in any category warrant additional testing of a sample fixture.



**Paco Lighting**  
[www.pacolighting.com](http://www.pacolighting.com)

**MRGA1 Behavioral Center Lens Recessed LED, 1x4, 2x2, 2x4**

Size: 1'x4', 2'x2', 2'x4'  
Mounting: drywall and metal security ceiling  
Outer Lens: 0.250" clear polycarbonate  
Housing: 16 gauge cold rolled steel with continuously welded end plates; 14 gauge die formed door frame with tamper resistant fasteners  
Finish: white antimicrobial paint



**Selux Corporation**  
[www.selux.com](http://www.selux.com)

**M125 LED Recessed (L125R1)**

Size: 3', 4'  
Mounting: drywall and metal security ceiling  
Outer Lens: prismatic polycarbonate  
Housing: Continuous extruded aluminum, Die cast aluminum end caps made from low copper marine grade aluminum alloy  
Finish: polyester powder coat



# Division 26 | Electrical

## Light Fixtures, Interior, General, Recessed

### General Notes

See comments on previous general notes page.

### Specification Notes

Coordinate lighting fixture specifications with new/existing ceiling substrate prior to ordering.

Only those models listed have been tested. Models with different options in any category warrant additional testing of a sample fixture.



### Visa Lighting

[www.visalighting.com](http://www.visalighting.com)

#### Serenity High Abuse CM1922, CM1924

Size: 2'x2', 2'x4'

Required Options: High Abuse

Mounting: drywall and metal security ceiling  
Inner Lens: 0.118" satin ice acrylic with vinyl laminate pattern diffuser

Outer Lens: 0.118" clear polycarbonate

Housing: steel housing and aluminum mud flange

Finish: antimicrobial powder coat



### Visa Lighting

[www.visalighting.com](http://www.visalighting.com)

#### Symmetry General Use Behavioral Health CM1988-W

Size: 24"

Mounting: drywall and metal security  
Outer Lens: 0.1875" high impact clear polycarbonate

Housing: steel housing and aluminum mud flange

Finish: antimicrobial powder coat



# Division 26 | Electrical

## Light Fixtures, Interior, General, Recessed

**General Notes**  
See comments on previous general notes page.

**Specification Notes**  
Coordinate lighting fixture specifications with new/existing ceiling substrate prior to ordering.

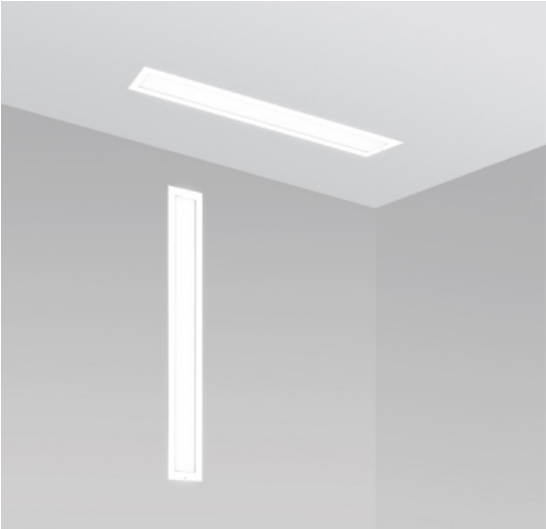
Only those models listed have been tested. Models with different options in any category warrant additional testing of a sample fixture.



**Visa Lighting**  
[www.visalighting.com](http://www.visalighting.com)

**Visage Behavioral Health Flush CV1680**

Size: 4.5" x 48"  
Required Options: TRS (tamper resistant fasteners)  
Mounting: drywall (ceiling & wall) and metal security ceiling  
Outer Lens: clear polycarbonate  
Housing: extruded aluminum  
Finish: antimicrobial powder coat



**Visa Lighting**  
[www.visalighting.com](http://www.visalighting.com)

**Lenga Behavioral Health Flush CM2062**

Size: 4.5" x 48"  
Required Options: FLGD (flanged drywall ceiling)  
Mounting: drywall and metal security ceiling  
Inner Lens: acrylic lens  
Outer Lens: clear polycarbonate  
Housing: extruded aluminum  
Finish: antimicrobial powder coat





# Division 26 | Electrical

## Light Fixtures, Interior, General, Recessed

**General Notes**  
See comments on previous general notes page.

**Specification Notes**  
Coordinate lighting fixture specifications with new/existing ceiling substrate prior to ordering.

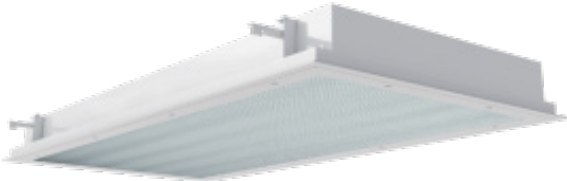
Only those models listed have been tested. Models with different options in any category warrant additional testing of a sample fixture.



**Viscor**  
[www.viscor.com](http://www.viscor.com)

**Certolux VRUO**

Size: 1'x4', 2'x2', 2'x4'  
Required Options: O (overlapping door)  
Mounting: drywall and metal security ceiling  
Inner Lens: may vary  
Outer Lens: .125 clear polycarbonate  
Housing: 16 gauge cold rolled steel  
Finish: polyester powder coat



**Viscor**  
[www.viscor.com](http://www.viscor.com)

**Certolux MBH1 2x2**

Size: 2'x2'  
Required Options: I (inset door)  
Mounting: drywall and metal security ceiling  
Inner Lens: contoured diffuse polycarbonate  
Outer Lens: .250 clear polycarbonate  
Housing: 20 gauge cold rolled steel with 18 gauge flange  
Finish: gloss white polyester powder coat



# Division 26 | Electrical

## Light Fixtures, Interior, General, Recessed

### General Notes

See comments on previous general notes page.

### Specification Notes

Coordinate lighting fixture specifications with new/existing ceiling substrate prior to ordering.

Only those models listed have been tested. Models with different options in any category warrant additional testing of a sample fixture.



### Viscor

[www.viscor.com](http://www.viscor.com)

### Circular Troffer, LTDCR

Size: 2'x2'

Required Options: C87; P02/P08 (polycarbonate lens); C03 (tamper resistant fasteners)

Mounting: drywall and metal security ceiling

Inner Lens: acrylic

Outer Lens: .25" polycarbonate

Housing: steel

Finish: white polyester powder coat



# Division 26 | Electrical

## Light Fixtures, Interior, General, Recessed

**General Notes**  
See comments on previous general notes page.

**Specification Notes**  
Coordinate lighting fixture specifications with new/existing ceiling substrate prior to ordering.

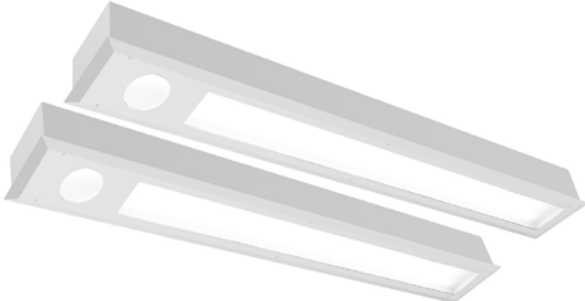
Only those models listed have been tested. Models with different options in any category warrant additional testing of a sample fixture.



**Amico Lighting Solutions**  
[www.amico.com](http://www.amico.com)

**Behavioral Solar Duo Med Multifunction LED**

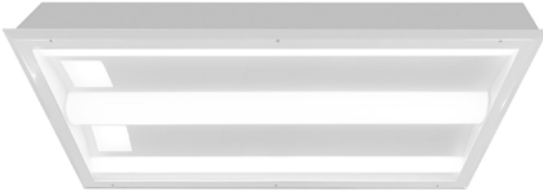
Size: 6"x48"  
Required Options: VRA (vandal resistant; 0.118" clear polycarbonate)  
Mounting: lay-in grid ceilings  
Outer Lens: 0.118" clear polycarbonate  
Housing: 20 gauge cold rolled steel  
Finish: white urethane powder coat finish, hospital grade



**Amico Lighting Solutions**  
[www.amico.com](http://www.amico.com)

**Behavioral Solar Eclipse Multifunction LED**

Size: 2'x2', 2'x4'  
Required Options: VRA (vandal resistant; 0.118" clear polycarbonate)  
Mounting: lay-in grid ceilings  
Outer Lens: 0.118" clear polycarbonate  
Housing: 20 gauge cold rolled steel  
Finish: white urethane powder coat finish, hospital grade



# Division 26 | Electrical

## Light Fixtures, Interior, General, Recessed

**General Notes**

See comments on previous general notes page.

**Specification Notes**

Coordinate lighting fixture specifications with new/existing ceiling substrate prior to ordering.

Only those models listed have been tested. Models with different options in any category warrant additional testing of a sample fixture.



**Cooper Lighting Solutions**

[www.cooperlighting.com](http://www.cooperlighting.com)

**FSP HS Shallow Plenum**

Size: 2'x4'  
 Required Options: HS (high security)  
 Mounting: lay-in grid ceilings  
 Outer Lens: 0.25" clear polycarbonate  
 Housing: aluminum & steel (above ceiling)

**Installation Note: Apply tamper-resistant sealant around perimeter, between ceiling opening and fixture edge.**



**Paco Lighting**

[www.pacolighting.com](http://www.pacolighting.com)

**MRGA1 Behavioral Center Lens Recessed LED, 1x4, 2x2, 2x4**

Size: 1'x4', 2'x2', 2'x4'  
 Mounting: lay-in grid ceilings  
 Outer Lens: 0.250" clear polycarbonate  
 Housing: 16 gauge cold rolled steel with continuously welded end plates; 14 gauge die formed door frame with tamper resistant fasteners  
 Finish: white antimicrobial paint



# Division 26 | Electrical

## Light Fixtures, Interior, General, Recessed

### General Notes

See comments on previous general notes page.

Only those models listed have been tested. Models with different options in any category warrant additional testing of a sample fixture.



### Cooper Lighting Solutions

[www.cooperlighting.com](http://www.cooperlighting.com)

### Fail-Safe ENV HS (DFVR)



# Division 26 | Electrical

## Light Fixtures, Interior, General, Recessed

### General Notes

See comments on previous general notes page.

Only those models listed have been tested. Models with different options in any category warrant additional testing of a sample fixture.



### Cooper Lighting Solutions

[www.cooperlighting.com](http://www.cooperlighting.com)

#### Failsafe SGI LED

**Note:** Light fixture housing construction at flange corners can be manipulated overtime. Gasket at lens and door comes out after repeated wedging and tampering.

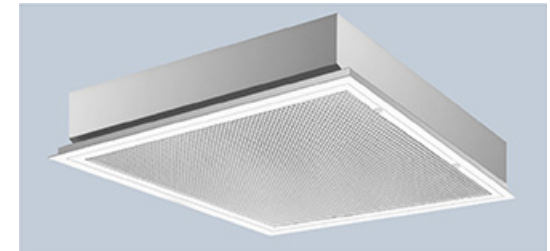


### Legion Lighting Co., Inc.

[www.legionlighting.com](http://www.legionlighting.com)

#### Securlume Series 672

**Note:** Fixture provides multiple ligature points and is not tamper-resistant.



# Division 26 | Electrical

## Light Fixtures, Interior, General, Recessed

### General Notes

See comments on previous general notes page.

Only those models listed have been tested. Models with different options in any category warrant additional testing of a sample fixture.



### Philips Day-Brite

[www.signify.com/en-us](http://www.signify.com/en-us)

#### Attune Series

**Note: A polycarbonate lens is no longer available as an option.**



### Pixi Lighting

[www.pixilighting.com](http://www.pixilighting.com)

#### Flatlight Luminaire

### Notes:

- Edges of housing allow for ligation.
- Gasketing material can be picked and removed.



# Division 26 | Electrical

## Light Fixtures, Interior, Task Lighting

### General Notes

See comments on previous general notes page.

### Specification Notes

Coordinate lighting fixture specifications with new/existing ceiling substrate prior to ordering.

Only those models listed have been tested. Models with different options in any category warrant additional testing of a sample fixture.



### Cooper Lighting Solutions

[www.cooperlighting.com](http://www.cooperlighting.com)

#### FLD6B HS LED Downlight

Size: 6"

Required Options: vandal resistant enclosed bottom trim ring; HS (high security)  
Mounting: drywall ceiling  
Inner Lens: 0.06" frosted polycarbonate  
Outer Lens: 0.125" clear polycarbonate  
Housing: cast aluminum  
Finish: matte white



### H.E. Williams

[www.hew.com](http://www.hew.com)

#### V6DR 6" Vandal-Resistant Downlight - Round

Size: 6"

Required Options: flush lens trim type (L); 1/2" standard flange type (OF)  
Mounting: drywall and metal security ceiling  
Inner Lens: polycarbonate  
Housing: textured white trim flange (MWT)  
Finish: clear semi-specular powder coat





# Division 26 | Electrical

## Light Fixtures, Interior, Task Lighting

**General Notes**

See comments on previous general notes page.

**Specification Notes**

Coordinate lighting fixture specifications with new/existing ceiling substrate prior to ordering.

Only those models listed have been tested. Models with different options in any category warrant additional testing of a sample fixture.



**H.E. Williams**

[www.hew.com](http://www.hew.com)

**4DR Tunable Color 4.5" Downlight, Round**

Size: 4.5"  
 Required Options: "tamper proof" regressed lens (R); standard flange (OR)  
 Mounting: drywall and metal security ceiling  
 Inner Lens: polycarbonate  
 Housing: low-iridescent anodized aluminum reflector; die-cast aluminum frame trim  
 Finish: clear semi-specular standard.

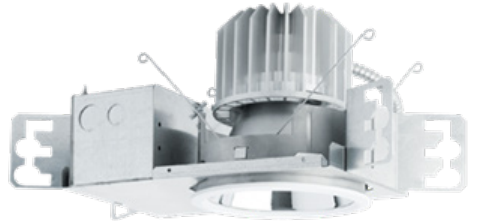


**Kenall Manufacturing**

[www.kenall.com](http://www.kenall.com)

**HADL6 & BHDL6 Millenium Downlight**

Size: 6"  
 Mounting: drywall ceilings  
 Inner Lens: diffused tempered-glass  
 Outer Lens: 0.125" clear polycarbonate  
 Housing: 18 gauge corrosion-resistant steel  
 Finish: flat powder coat.



# Division 26 | Electrical

## Light Fixtures, Interior, Task Lighting

**General Notes**

See comments on previous general notes page.

**Specification Notes**

Coordinate lighting fixture specifications with new/existing ceiling substrate prior to ordering.

Only those models listed have been tested. Models with different options in any category warrant additional testing of a sample fixture.



**The Kirlin Company**

[www.kirlinlighting.com](http://www.kirlinlighting.com)

**LRR-06020 6" LED Downlight**

Size: 6"  
 Required Options: -25 (vandal resistant trim, hardware and lensing)  
 Mounting: drywall ceilings  
 Inner Lens: high strength prismatic acrylic  
 Outer Lens: 0.125" clear flat polycarbonate  
 Housing: acrylic enameled aluminum housing; seamless tapered aluminum self-flanged rigid cast trim  
 Finish: standard white



**The Kirlin Company**

[www.kirlinlighting.com](http://www.kirlinlighting.com)

**Vandal Resistant Downlight, LRV-07469 (7") & LRV-08470 (8")**

Size: 7", 8" (shallow plenum applicable)  
 Mounting: drywall ceilings  
 Inner Lens: clear prismatic acrylic  
 Outer Lens: 0.125" clear flat polycarbonate  
 Housing: vandal resistant smooth white seamless tapered aluminum self-flanged flare trim  
 Finish: standard



# Division 26 | Electrical

## Light Fixtures, Interior, Task Lighting

### General Notes

See comments on previous general notes page.

### Specification Notes

Coordinate lighting fixture specifications with new/existing ceiling substrate prior to ordering.

Only those models listed have been tested. Models with different options in any category warrant additional testing of a sample fixture.



### Kurtzon

[www.kurtzon.com](http://www.kurtzon.com)

#### VL PBD 6" LED Behavioral Downlight

Size: 6"  
Required Options: tamper-resistant fasteners  
Mounting: drywall ceilings  
Outer Lens: clear non-prismatic 0.125" virgin polycarbonate silicone  
Housing: stainless steel body and spun aluminum housing and plaster frame. 16 gauge stainless steel formed door frame  
Finish: antimicrobial polyester powder coat



### Lightolier by Signify

[www.lightingproducts.signify.com](http://www.lightingproducts.signify.com)

#### Calculite LED 4" & 6" Gen3 Downlight

Size: 4", 6"  
Required Options: C4RVPWH/C6RVPWH (IP65 rated vandal proof matte white accessory); (F) flangeless trim  
Mounting: drywall ceilings  
Outer Lens: clear polycarbonate  
Housing: machine aluminum ring  
Finish: standard matte white



# Division 26 | Electrical

## Light Fixtures, Interior, Task Lighting

### General Notes

See comments on previous general notes page.

### Specification Notes

Coordinate lighting fixture specifications with new/existing ceiling substrate prior to ordering.

Only those models listed have been tested. Models with different options in any category warrant additional testing of a sample fixture.



### New Star Lighting

[www.newstarlighting.com](http://www.newstarlighting.com)

#### DLM6 Downlight StarMed Series

Size: 6"

Required Options: TH (torx head screws)

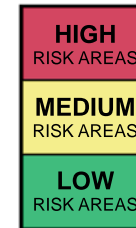
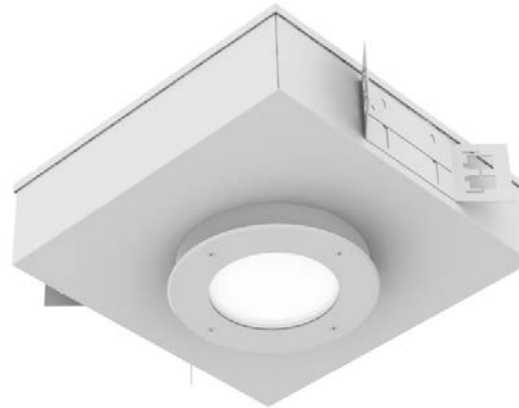
Mounting: drywall ceilings

Inner Lens: 0.125" prismatic acrylic

Outer Lens: 0.250" clear polycarbonate

Housing: 16 gauge painted steel housing and trim

Finish: standard white antimicrobial powder coat



### Visa Lighting

[www.visalighting.com/](http://www.visalighting.com/)

#### Gig Task Light CB1800-BH1

Size: 3.75"x6.75"

Required Options: BH1 (behavioral health high abuse mounting bracket)

Mounting: wall (downlight only)

Outer Lens: 0.25" polycarbonate lens with gel gasket

Housing: cast aluminum

Finish: powder coat



# Division 26 | Electrical

## Light Fixtures, Interior, Task Lighting

### General Notes

See comments on previous general notes page.

Only those models listed have been tested. Models with different options in any category warrant additional testing of a sample fixture.



### Kenall Manufacturing

[www.kenall.com](http://www.kenall.com)

#### Stratalume UC Series, UC SL

Size: 5"x12", 5"x24", 5"x36", 5"x48"  
Required Options: polycarbonate lens  
Mounting: drywall ceilings  
Outer Lens: 0.125" prismatic polycarbonate lens  
Housing: 1.1" profile, 20 gauge cold rolled steel.  
Finish: TGIC polyester powder coat

**Note: Ballast must be modified to fit.**



### Visa Lighting

[www.visalighting.com/](http://www.visalighting.com/)

#### Sole Recessed Illuminated Mirror, Oval & Rectangle

Size: 20"x30" (rectangle), 24"x34" (oval)  
Outer Lens: impact resistant 6mm polycarbonate mirror with abrasion resilient silicone hard coating for scratch resistance  
Housing: Stainless steel frame, heavy gauge fabricated aluminum back box  
Finish: powder coat



# Division 26 | Electrical

## Light Fixtures, Interior, Task Lighting

### General Notes

See comments on previous general notes page.

Only those models listed have been tested. Models with different options in any category warrant additional testing of a sample fixture.



### Designplan Lighting, Inc.

[www.designplan.com](http://www.designplan.com)

#### RDL/RHL Downlight

**Note: Installation may allow gasketing to be compromised.**



### Designplan Lighting, Inc.

[www.designplan.com](http://www.designplan.com)

#### Resistant Downlights RDD, RDO, RDP, & RDW Vandal

**Note: Installation may allow gasketing to be compromised.**



# Division 26 | Electrical

## Light Fixtures, Interior, Night Lighting

**General Notes**

See comments on previous general notes page.

Amber colored LEDs are recommended at patient bedrooms.

Night lights are recommended to be installed 12"-18" above finish floor for proper use and to minimize potential ligature risk.

Only those models listed have been tested. Models with different options in any category warrant additional testing of a sample fixture.



**Amico Lighting Solutions**

[www.amico.com](http://www.amico.com)

**Lunar Decorative Wall Mount LED Night Light**

Size: 4.5"x2.75"  
 Mounting: wall  
 Outer Lens: polycarbonate  
 Housing: die-cast aluminum  
 Finish: antimicrobial powder coat



**Cooper Lighting Solutions**

[www.cooperlighting.com](http://www.cooperlighting.com)

**Fail-Safe MSN Night Light**

Size: 3"x5"  
 Required Options: tamper-resistant fasteners  
 Outer Lens: acrylic  
 Housing: die cast aluminum face plate  
 Finish: standard painted

**Caution: Product has an acrylic lens, versus typical recommendation of polycarbonate. However, small sized lens resisted breakage during testing.**



# Division 26 | Electrical

## Light Fixtures, Interior, Night Lighting

### General Notes

See comments on previous general notes page.

Amber colored LEDs are recommended at patient bedrooms.

Night lights are recommended to be installed 12"-18" above finish floor for proper use and to minimize potential ligature risk.

Only those models listed have been tested. Models with different options in any category warrant additional testing of a sample fixture.



### Elcast Lighting

[www.elcastlgt.com](http://www.elcastlgt.com)

#### Series 1216-1-F

Size: 3.10"x7.10"

Required Options: tamper-resistant fasteners

Outer Lens: polycarbonate

Housing: cast aluminum housing and frame

Finish: polyester powder coating on zinc based primer



### Hubbell Lighting

[www.hubbellhealthcare.com](http://www.hubbellhealthcare.com)

#### NiteWay Night Light - Vertical, Horizontal

Size: 3"x5", 5"x3"

Required Options: tamper-resistant fasteners

Outer Lens: polycarbonate optical lens

Housing: die cast aluminum faceplate; 0.05 aluminum backplate

Finish: antimicrobial polyester powder coat





# Division 26 | Electrical

## Light Fixtures, Interior, Night Lighting

**General Notes**

See comments on previous general notes page.

Amber colored LEDs are recommended at patient bedrooms.

Night lights are recommended to be installed 12"-18" above finish floor for proper use and to minimize potential ligature risk.

Only those models listed have been tested. Models with different options in any category warrant additional testing of a sample fixture.



**Kenall Manufacturing**

[www.kenall.com](http://www.kenall.com)

**MedMaster SoftStep Contour Steplight, MCSL**

Size: varies  
 Outer Lens: pearlescent polycarbonate  
 Housing: die cast aluminum. Reflector is die cast aluminum with integral heat sink.  
 Finish: antimicrobial polyester powder coat



**Kenall Manufacturing**

[www.kenall.com](http://www.kenall.com)

**MedMaster SoftStep Steplight MSL**

Size: 4"x10"  
 Required Options: MSL (standard model); (L) Internal Louver; AL (anti-ligature lens)  
 Outer Lens: polycarbonate  
 Housing: 18 gauge cold rolled steel  
 Finish: polyester powder coat



# Division 26 | Electrical

## Light Fixtures, Interior, Night Lighting

### General Notes

See comments on previous general notes page.

Amber colored LEDs are recommended at patient bedrooms.

Night lights are recommended to be installed 12"-18" above finish floor for proper use and to minimize potential ligature risk.

Only those models listed have been tested. Models with different options in any category warrant additional testing of a sample fixture.



### The Kirlin Company

[www.kirlinlighting.com](http://www.kirlinlighting.com)

### MNS-05924-26 Square StepLight LED

Size: 5"x5"

Required Options: "26" (faceplate secured with tamperproof screws)

Outer Lens: 2" diameter translucent white 1/8" polycarbonate

Housing: 4" x 2-1/4" standard octagon galvanized steel outlet box with gasketed rustproof aluminum trim faceplate.

Finish: white standard



# Division 26 | Electrical

## Light Fixtures, Interior, Night Lighting

### General Notes

See comments on previous general notes page.

Amber colored LEDs are recommended at patient bedrooms.

Night lights are recommended to be installed 12"-18" above finish floor for proper use and to minimize potential ligature risk.

Only those models listed have been tested. Models with different options in any category warrant additional testing of a sample fixture.



### Philips Alkco

[www.lightingproducts.philips.com](http://www.lightingproducts.philips.com)

### WayGlo WG2H

**Note: Acrylic lens can be easily broken into small shards.**



# Division 26 | Electrical Light Fixtures, Exit Signage

### General Notes

See comments on previous general lighting fixtures page.

Must be positively and mechanically attached, not friction fit. Specify fully recessed housing when available.

Ceiling mounted exit lights shall be installed with mounting bracket that is full length of light box. No gaps shall be present between light box and mounting bracket or mounting bracket and ceiling.

Side mounted exit lights are prohibited.

### Specification Notes

Coordinate exit signage specifications with new/existing ceiling substrate prior to ordering.

Only those models listed have been tested. Models with different options in any category warrant additional testing of a sample fixture.



### Kenall Manufacturing

[www.kenall.com](http://www.kenall.com)

#### Millenium Metrex METSR Series Exit Light (Recessed)

Diffuser|Lens: .188" thick clear polycarbonate.  
Housing: 20 gauge Cold rolled steel one piece welded construction.  
Finish: painted white, black or brushed stainless steel.



### Kenall Manufacturing

[www.kenall.com](http://www.kenall.com)

#### Millenium Metrex METSW Series Exit Light (Wall Mount)

Diffuser|Lens: UV stabilized, high impact, .120" thick injection molded clear polycarbonate.  
Housing: High impact injection molded polycarbonate.



# Division 26 | Electrical

## Light Fixtures, Exit Signage

**General Notes**

See comments on previous general lighting fixtures page.

Must be positively and mechanically attached, not friction fit. Specify fully recessed housing when available.

Ceiling mounted exit lights shall be installed with mounting bracket that is full length of light box. No gaps shall be present between light box and mounting bracket or mounting bracket and ceiling.

Side mounted exit lights are prohibited.

**Specification Notes**

Coordinate exit signage specifications with new/existing ceiling substrate prior to ordering.

Only those models listed have been tested. Models with different options in any category warrant additional testing of a sample fixture.



**Kenall Manufacturing**

[www.kenall.com](http://www.kenall.com)

**Millenium Metrex METSS Exit Light (Wall Mount)**

Diffuser|Lens: 0.120" high impact polycarbonate  
 Housing: injection molded polycarbonate  
 Finish: painted white or black



**Kenall Manufacturing**

[www.kenall.com](http://www.kenall.com)

**Mighty Mac MMEX Series Exit Light (Wall and Ceiling Mount)**

Diffuser|Lens: .188" thick clear polycarbonate.  
 Housing: One piece die formed 14 gauge steel continuously seam welded.



# Division 26 | Electrical

## Light Fixtures, Exit Signage

### General Notes

See comments on previous general lighting fixtures page.

Must be positively and mechanically attached, not friction fit. Specify fully recessed housing when available.

Ceiling mounted exit lights shall be installed with mounting bracket that is full length of light box. No gaps shall be present between light box and mounting bracket or mounting bracket and ceiling.

Side mounted exit lights are prohibited.

### Specification Notes

Coordinate exit signage specifications with new/existing ceiling substrate prior to ordering.

Only those models listed have been tested. Models with different options in any category warrant additional testing of a sample fixture.



### Barron Lighting Group

[www.barronltg.com](http://www.barronltg.com)

#### S900 Series Edge-Lit Exit

Diffuser|Lens: Clear acrylic with leveled lettering for maximum light output. Exit letters are 6" high with 3/4" stroke.  
Housing: Extruded aluminum supplied with galvanized steel adjustable bar hanger assembly.

**Note: Pivoting feature creates looping ligature opportunity.**



### Philips Chloride

[www.lightingproducts.philips.com](http://www.lightingproducts.philips.com)

#### Caliber Series Edge Lit Exit

Diffuser|Lens: High impact acrylic, silk screened.  
Housing: Premium die cast aluminum with recessed mounting.

**Note: Lens is not mechanically fastened into housing. Fixture installation has inherit ligature risks.**



# Division 26 | Electrical Light Fixtures, Exit Signage

## General Notes

See comments on previous general lighting fixtures page.

Must be positively and mechanically attached, not friction fit. Specify fully recessed housing when available.

Ceiling mounted exit lights shall be installed with mounting bracket that is full length of light box. No gaps shall be present between light box and mounting bracket or mounting bracket and ceiling.

Side mounted exit lights are prohibited.

## Specification Notes

Coordinate exit signage specifications with new/existing ceiling substrate prior to ordering.

Only those models listed have been tested. Models with different options in any category warrant additional testing of a sample fixture.



## Philips Chloride

[www.lightingproducts.philips.com](http://www.lightingproducts.philips.com)

### CE-11500 SC Series Exit Light

Diffuser|Lens: No lens provided.

Housing: Two piece die cast aluminum with chevron cutouts.

Finish: Epoxy based powder coat or brushed aluminum.

**Note: Cutout letters/chevrons allow access to interior of fixture.**



## Philips Chloride

[www.lightingproducts.philips.com](http://www.lightingproducts.philips.com)

### CE-11500 SC Series Recessed Exit Light

Diffuser|Lens: Polycarbonate/Lens.

Housing: Two-piece die cast aluminum with 18 gauge recessed back box and vandal resistant lens.

Finish: Epoxy based powder coat or brushed aluminum.

**Note: Lens does not sit flush inside recessed back box for tight and secure fit.**







# Division 27 | Communications

## Wireless Routers

### General Notes

Wireless routers shall be mounted above the ceiling systems in medium and high risk areas when possible. It should be noted that functionality may be compromised when routers are installed above metal ceilings.

Wireless routers can be mounted below the ceiling systems in low risk areas.



### Oberon

[www.oberoninc.com](http://www.oberoninc.com)

### Model 1041-WA

11" single piece recessed ceiling Wi-Fi access point mount/white plastic dome



# Division 27 | Communications

## Clocks

### Installation Notes

It is recommended to specify recessed wall clocks with polycarbonate lenses.



### Sapling Synchronized Clock Systems

[www.sapling-inc.com](http://www.sapling-inc.com)

#### Flush Mount Housing Kit for an Analog 12" Square Clock (V1.0) (A-FLUSH-MNT-12S-KIT-1)

Frame for analog clocks within a synchronization system with built-in web interface, data received from preprogrammed third party NTP servers for reliability and redundancy, built-in self-diagnostics and email alerts for various functions, and ability for users to view, monitor, and send various commands to all IP clocks in the system. Provides automatic daylight saving time changes, and 12 or 24 hour display.

Compatible with SAL, SAP, SAW, and SAM Series clocks, providing different synchronization technologies.



### Sapling Synchronized Clock Systems

[www.sapling-inc.com](http://www.sapling-inc.com)

#### Digital Flush Mounted Polycarbonate Frame (V1.0) (D-XXX-FIL-XXX-F-KIT-1)

Frame for digital clocks within a synchronization system with built-in web interface, data received from preprogrammed third party NTP servers for reliability and redundancy, built-in self-diagnostics and email alerts for various functions, and ability for users to view, monitor, and send various commands to all IP clocks in the system.

Compatible with SBP and SBD Series clocks, providing different synchronization technologies.



# Division 27 | Communications

## Clocks

### Installation Notes

It is recommended to specify recessed wall clocks with polycarbonate lenses.



### Primex Wireless

[www.primexwireless.com](http://www.primexwireless.com)

### XR Digital Clock

Compatible with Primex XR Series Transmitters providing wireless synchronized timekeeping. Specify GPS.





# Division 28 | Electronic Safety & Security

## Fire Alarm Components, General



### General Notes

At this time, NYS-OMH is not aware of any patient-safe fire alarm components.

Device covers are susceptible to abuse and can be looped/weaponized. Careful consideration is required when specifying and locating devices associated with fire alarm and other electronic safety and security systems. It is therefore extremely important to locate these items in such a way to prevent patient access and interaction in high and medium risk areas.

Fire alarm notification devices are required to be ceiling mounted in high risk areas.

It is recommended that fire alarm notification devices be ceiling mounted in medium risk areas.