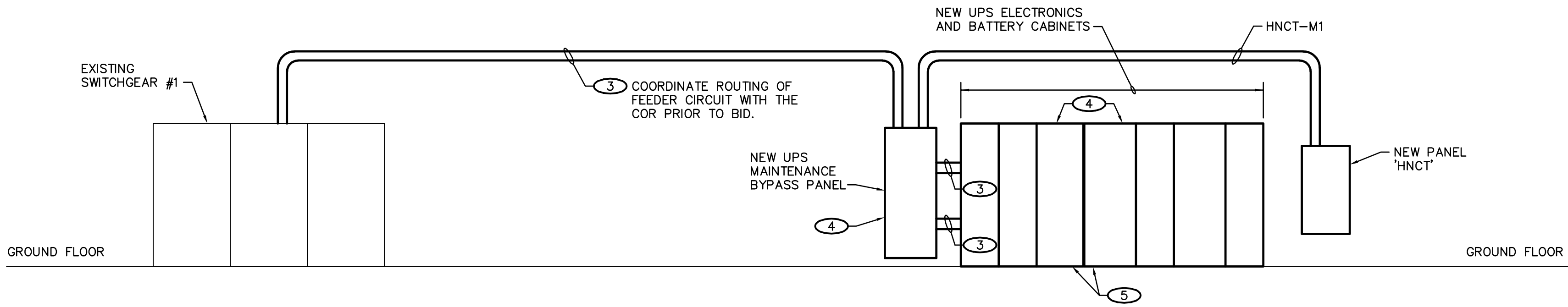


A
B
C
D
E
F

ELECTRICAL KEYNOTES: (○)

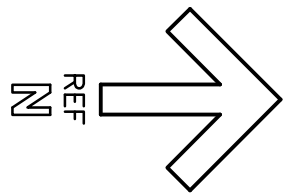
- 1 PROVIDE NEW 500 AMP, 3 POLE CIRCUIT BREAKER COMPATIBLE WITH EXISTING PANEL (SQUARE D, QED STYLE SWITCHBOARD) AND INSTALL IN AVAILABLE SPACE. PROVIDE CIRCUIT BREAKER WITH GROUND FAULT, LONG TIME, SHORT TIME AND INSTANTANEOUS ADJUSTMENTS. NEW CIRCUIT BREAKER AIC RATING SHALL MATCH EXISTING. CONNECT FEEDER FOR UPS MAINTENANCE BYPASS PANEL.
- 2 100 AMP CIRCUIT BREAKER (SERVING CT COMBINATION CONTROLLER/DISCONNECT) SHALL BECOME 'SPARE'. RE-LABEL CIRCUIT IDENTIFICATION INFORMATION ON FRONT OF SWITCH TO INDICATE 'SPARE'.
- 3 2 SETS: 4-250 KCMIL, 1-250 KCMIL GROUND IN 3" CONDUIT.
- 4 EQUIPMENT INDICATED IS OWNER FURNISHED AND CONTRACTOR INSTALLED. INSTALL AND MAKE CONNECTIONS PER THE RESPECTIVE EQUIPMENT MANUFACTURER'S INSTRUCTIONS/RECOMMENDATIONS.
- 5 CONTRACTOR SHALL PROVIDE CABLES AND CONDUIT BETWEEN THE UPS ELECTRONICS AND BATTERY CABINETS PER THE EQUIPMENT MANUFACTURER'S INSTRUCTIONS/RECOMMENDATIONS.
- 6 TERMINATION LOCATION FOR TELECOMMUNICATION CABLING INSTALLED FOR DEVICES IN ROOMS A83 AND A86. COORDINATE REQUIREMENT FOR PROVISION OF AN ADDITIONAL PATCH PANEL IN EXISTING DATA RACK WITH THE IT STAFF AND THE COR.
- 7 TERMINATION LOCATION FOR TELECOMMUNICATION CABLING INSTALLED FOR DEVICES IN ROOMS A02 THROUGH A08A. COORDINATE REQUIREMENT FOR PROVISION OF AN ADDITIONAL PATCH PANEL IN EXISTING DATA RACK WITH THE IT STAFF AND THE COR.
- 8 ALL WORK IN THIS ROOM WILL NEED TO BE COMPLETED WITH AN IT APPROVED ESCORT. ENTRY INTO THIS ROOM WITHOUT AND ESCORT IS NOT PERMITTED. RELATED WORK IN THIS SPACE SHALL BE COORDINATED IN ADVANCE WITH THE IT STAFF AND THE COR.



POWER RISER DIAGRAM
NO SCALE



2F GROUND FLOOR UPS FEEDER ROUTING PLAN
SCALE: 1/16" = 1'-0"



File Path

VA FORM 08 - 6231

| | |
|--|------------|
| | |
| | |
| BID DOCUMENTS | 10/10/2018 |
| CONSTRUCTION DOCUMENTS 100% SUBMITTAL - UPDATE | 9/28/2018 |
| CONSTRUCTION DOCUMENTS 100% SUBMITTAL | 9/7/2018 |
| DESIGN DEVELOPMENT 90% SUBMITTAL | 8/3/2018 |
| SCHEMATIC DESIGN 36% SUBMITTAL 2 | 7/5/2018 |
| SCHEMATIC DESIGN 35% SUBMITTAL | 6/6/2018 |
| Revisions: | Date: |

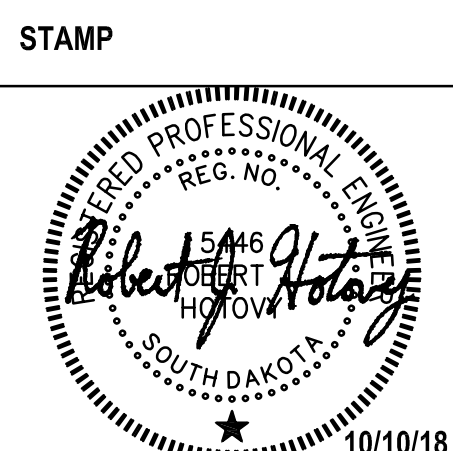
CONSULTANT

Mechanical / Electrical Engineering:
Farris Engineering
12700 W Dodge Road
Omaha, NE 68154
(402) 330-5900
Robert Hotovy

Structural Engineering:
Shaffer & Stevens, P.C.
9910 N 48th Street
Omaha, NE 68152
(402) 455-7698
Donn Shaffer

ARCHITECT/ENGINEER OF RECORD

A/E:
CLH Architects
3705 N 200th St
Elkhorn, NE 68022
(402) 291-6941
Tim Werner



Office of
Construction
and Facilities
Management

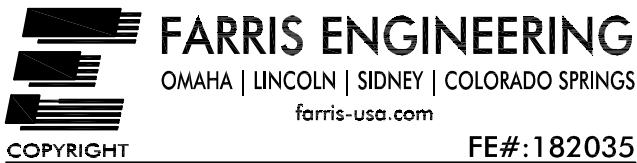


| |
|--------------------------------------|
| Drawing Title Feeder Routing Plan |
| Approved: Project Director |

| |
|------------------------|
| Phase BID DOCUMENTS |
| FULLY SPRINKLERED |

| |
|--|
| Project Title Second CT Scanner Site Prep Design |
| Location Sioux Falls, SD |
| Issue Date October 10, 2018 |
| Checked RJH |
| Drawn DMM |

| |
|------------------------------|
| Project Number 438-18-103 |
| Building Number 5 |
| Drawing Number EP102 |



| MARK | DESCRIPTION | MANUFACTURER/SERIES | CATALOG NO. | LIGHT SOURCE | | FINISH | MOUNTING | INPUT WATTS | VOLTS | ACCEPTABLE MANUFACTURERS | REMARKS |
|------|--|---------------------|---------------------------------|--------------|--------------------------|-----------------|----------|-------------|-------|--------------------------|---------|
| | | | | QTY | TYPE | | | | | | |
| A | 2'X4' PRISMATIC LENSED LED TROFFER - NOMINAL 5600 LUMENS | METALUX | 24GR-LD56-A125-UNV-L835-CD1-PAF | - | 5618 LUMEN 3500K LED | WHITE | RECESSED | 48 VA | 120 | REMARK 1 | - |
| B | 2'X4' VOLUMETRIC LED TROFFER - NOMINAL 6000 LUMENS 1%-100% DIMMING | METALUX | 24CZ-LD56-60-UNV-L835-CD1 | - | 6099 LUMEN 3500K LED | WHITE | RECESSED | 55 VA | 120 | REMARK 1 | - |
| BA | 2'X4' VOLUMETRIC LED TROFFER - NOMINAL 5500 LUMENS | METALUX | 24CZ-LD55-55-UNV-L835-CD1 | - | 5504 LUMEN 3500K LED | WHITE | RECESSED | 48 VA | 120 | REMARK 1 | - |
| BB | 2'X4' VOLUMETRIC LED TROFFER - NOMINAL 5000 LUMENS | METALUX | 24CZ-LD55-50-UNV-L835-CD1 | - | 4988 LUMEN 3500K LED | WHITE | RECESSED | 43 VA | 120 | REMARK 1 | - |
| C | NOMINAL 24" LONG UNDERCABINET LED WITH ON-OFF ROCKER SWITCH AND INTEGRAL OCC. SENSOR | HEALTHCARE LIGHTING | HUC523 120 LED3S 1 S1 OS | - | 1220 LUMEN 3500K LED | GLOSS WHITE | SURFACE | 13 VA | 120 | KENALL, FAIL-SAFE | - |
| CA | NOMINAL 36" LONG UNDERCABINET LED WITH ON-OFF ROCKER SWITCH AND INTEGRAL OCC. SENSOR | HEALTHCARE LIGHTING | HUC535 120 LED3S 1 S1 OS | - | 1930 LUMEN 3500K LED | GLOSS WHITE | SURFACE | 20 VA | 120 | KENALL, FAIL-SAFE | - |
| CB | NOMINAL 48" LONG UNDERCABINET LED WITH ON-OFF ROCKER SWITCH AND INTEGRAL OCC. SENSOR | HEALTHCARE LIGHTING | HUC548 120 LED3S 1 S1 OS | - | 2600 LUMEN 3500K LED | GLOSS WHITE | SURFACE | 28 VA | 120 | KENALL, FAIL-SAFE | - |
| D | 2'X2' VOLUMETRIC LED TROFFER - NOMINAL 3900 LUMENS 1%-100% DIMMING | METALUX | 22CZ-LD53-39-UNV-L835-CD1 | - | 3932 LUMEN 3500K LED | WHITE | RECESSED | 38 VA | 120 | REMARK 1 | - |
| F | LED 'X-RAY IN USE' SIGN | LITHONIA | LE P 1 R 120/27 SW16 | - | LED FURNISHED IN UNIT | BLACK/ ALUMINUM | REMARK 4 | 6 VA | 120 | REMARK 3 | - |

A. SUBMIT SHOP DRAWINGS FOR EACH LUMINAIRE, BALLAST, AND LAMP TYPE USED ON PROJECT.

B. ACCEPTABLE MANUFACTURERS LISTED ARE CAPABLE OF PROVIDING EQUIVALENT LUMINAIRES. SUBMIT PRODUCT AND ACCESSORIES EQUIVALENT OR SUPERIOR TO THE SPECIFIED LUMINAIRE IN PHOTOMETRIC PERFORMANCE, CONSTRUCTION QUALITY, INCLUDED ACCESSORIES, AND FINISH. ADDITIONAL MANUFACTURERS NOT LISTED MAY ALSO BE SUBMITTED FOR APPROVAL. APPROVAL WILL BE BASED ON AN ASSESSMENT OF THE PRODUCT'S QUALITY, PHOTOMETRIC PERFORMANCE, INCLUDED ACCESSORIES, AND AESTHETICS.

C. ALL LUMINAIRES SHALL HAVE A U.L. LABEL. ALL LUMINAIRES USED IN EXTERIOR APPLICATIONS SHALL HAVE A U.L. WET LABEL.

D. VERIFY MOUNTING COMPATIBILITY OF LUMINAIRES WITH CEILING SYSTEMS/MATERIALS PRIOR TO ORDERING LUMINAIRES. NOTIFY ENGINEER OF ANY CONFLICTS WITH THE PROPOSED INSTALLATION.

E. FOR ALL SUSPENDED LUMINAIRES PROVIDE MOUNTING TYPE INDICATED IN LUMINAIRE SCHEDULE. REFER TO PLANS FOR SUSPENSION LENGTH(S) REQUIRED.

F. RECESSED DOWNLIGHTS SHALL HAVE ALZAK FINISH SELF-TRIMMING REFLECTORS. DOWNLIGHTS SHALL HAVE HARDWARE MOUNTING FOR REFLECTOR. SPRING CLIPS ARE NOT ACCEPTABLE.

G. PHILIPS, OSRAM SYLVANIA, G.E., CREE, NICHIA, XIACATO, AND SAMSUNG ARE ACCEPTABLE LED MANUFACTURERS.

H. PROVIDE LED LUMINAIRES WITH MINIMUM 5-YEAR WARRANTY AND INTEGRAL SURGE PROTECTION. LED MODULES, DRIVERS, AND POWER SUPPLIES SHALL BE FIELD-REPLACEABLE.

1. COLUMBIA, DAY-BRITTE, H.E. WILLIAMS, LITHONIA AND METALUX ARE ACCEPTABLE MANUFACTURERS FOR LUMINAIRE TYPE INDICATED WHERE NOT LISTED AS BASE MANUFACTURER.
2. GOTHAM, H.E. WILLIAMS, LIGHTLOTER, PATHWAY COVENTRY, PORTFOLIO, AND PRESCOLITE ARE ACCEPTABLE MANUFACTURERS FOR LUMINAIRE TYPE INDICATED WHERE NOT LISTED AS BASE MANUFACTURER.
3. CHLORIDE, DUAL-LITE, EMERGLITE, HUBBELL, LITHONIA AND SURE-LITES ARE ACCEPTABLE MANUFACTURERS FOR LUMINAIRE TYPE INDICATED WHERE NOT LISTED AS BASE MANUFACTURER.
4. REFER TO DRAWINGS FOR MOUNTING REQUIREMENTS SUCH AS WALL MOUNT, END MOUNT, CEILING MOUNT AND PROVIDE LUMINAIRES ACCORDINGLY.



File Path