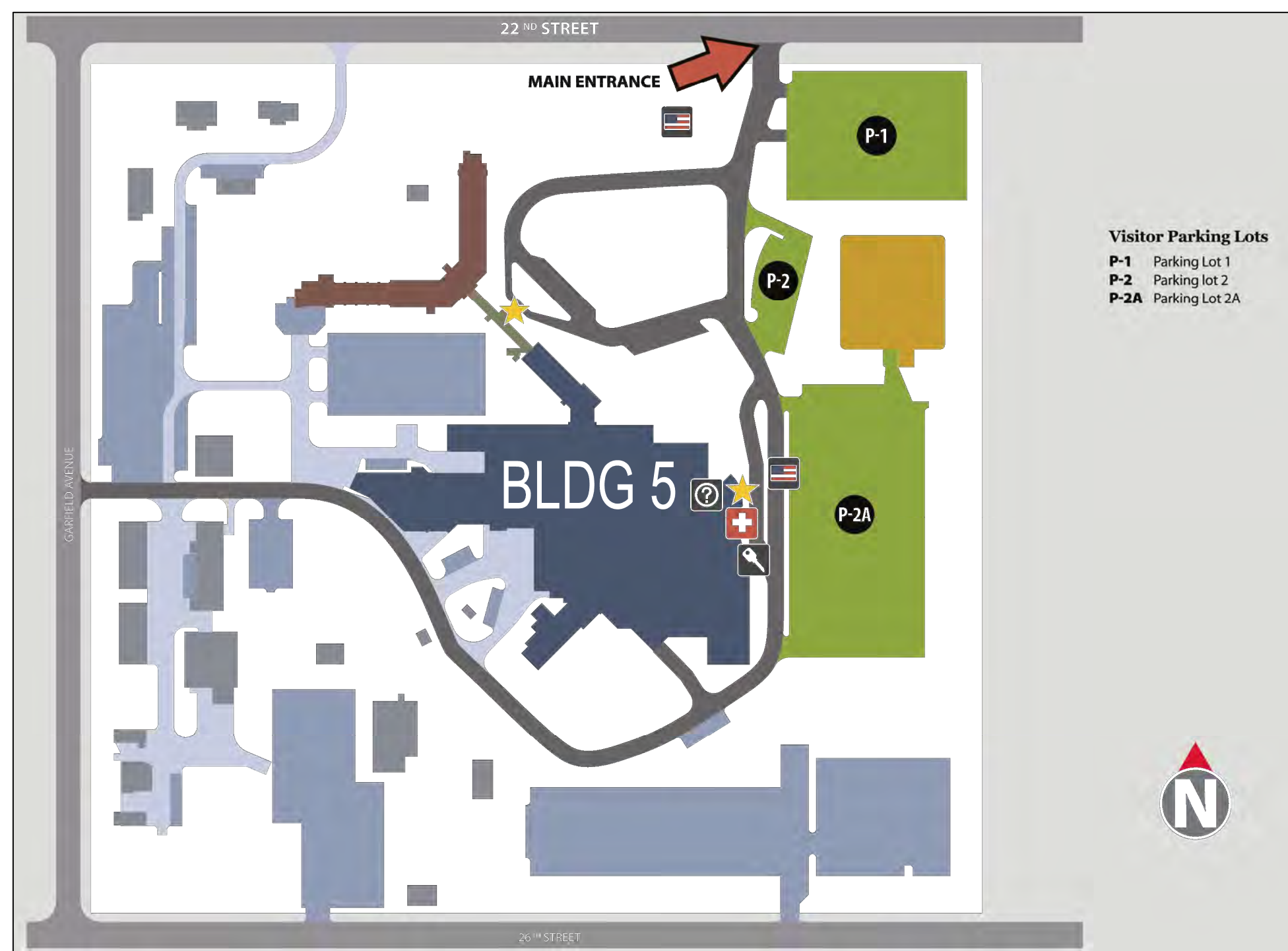


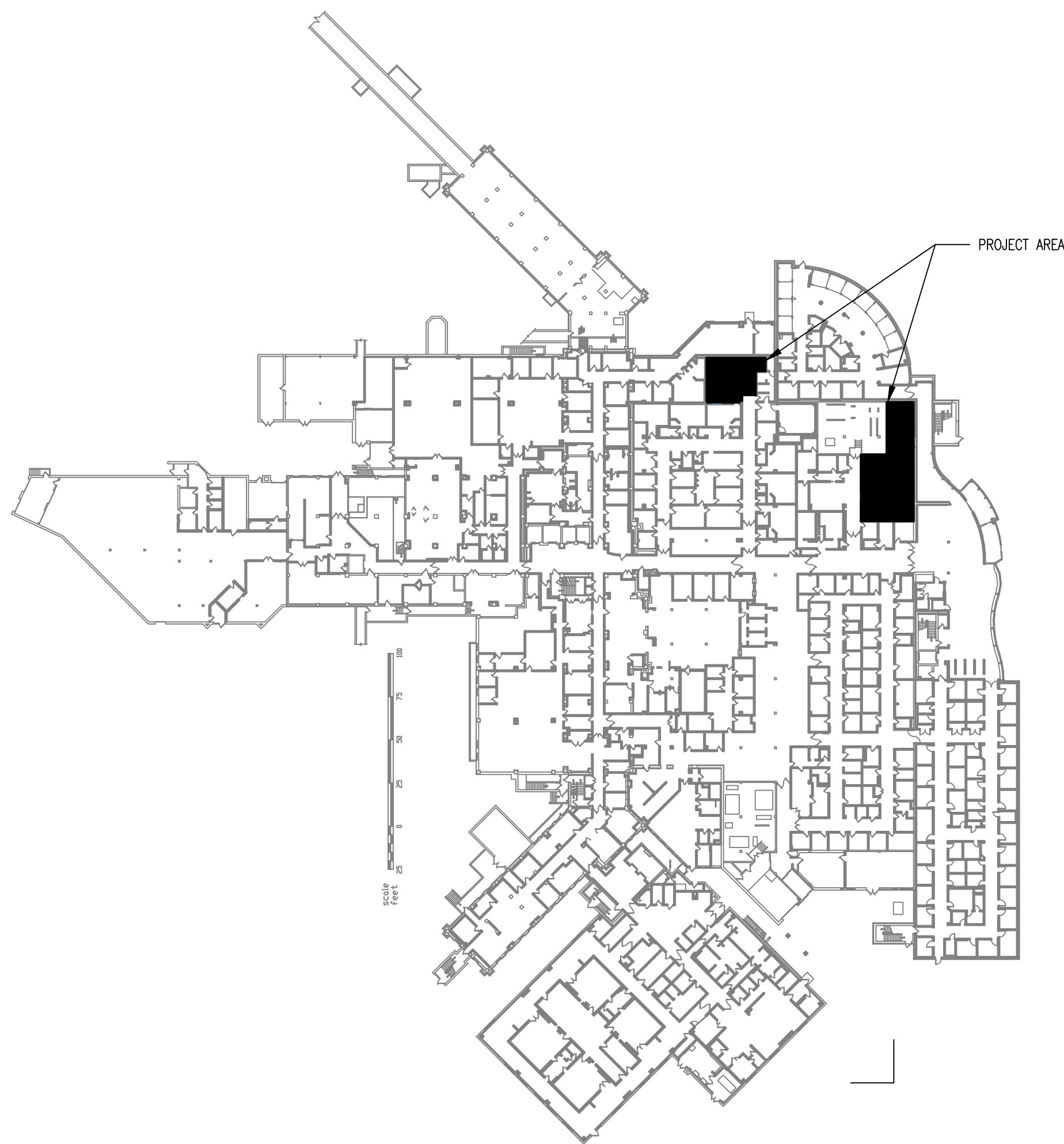
Sioux Falls VA Health Care System

Second CT Scanner Site Prep Design Project Number 438-18-103

2501 W. 22nd Street Sioux Falls, SD 57105



CAMPUS PLAN
NOT TO SCALE



BUILDING 5 PLAN
1/64" = 1'-0"

IMPORTANT CONTRACTOR NOTES:

- ALL CONTRACTORS ARE RESPONSIBLE FOR REVIEWING ENTIRE SET OF DOCUMENTS TO DETERMINE THEIR FULL SCOPE OF WORK. CONTRACTOR SHALL NOT BE ALLOWED EXTRA COSTS DUE TO FAILURE TO REVIEW ENTIRE SET OF DOCUMENTS.
- COVER AND PROTECT ALL VA EQUIPMENT AND FURNITURE SO THAT THE FUNCTION AND APPEARANCE IS NOT AFFECTED BY CONSTRUCTION. THE CONTRACTOR, THEIR EQUIPMENT, MATERIALS, OR ANY INVOLVED ACTIONS.
- A 1 HR MINIMUM FIRE-RATED SEPARATION IS REQUIRED BETWEEN ALL OCCUPIED SPACE AND CONSTRUCTION AREAS. THIS PROTECTION INCLUDES ANY EXISTING PENETRATIONS AND OPENINGS.

FIRE PROOFING GENERAL NOTES:

- MAINTAIN FIRE RATED CONSTRUCTION AT WALL PENETRATIONS. (CONSTRUCTION TO CONFORM TO MANUFACTURER'S FIRE RATED/TEST ASSEMBLIES.
- FIRE CAULK ALL SLEEVES AND PENETRATIONS AT FIRE WALLS/PARTITIONS AND FLOORS. CONFORM WITH THE TESTED/SUBMITTED FIRE RATED ASSEMBLY. USE RED FIRE CAULK AND LABEL WALL WITH U.L. DESIGN NUMBER AND ASTM. FIRE RATED WALLS SHOWN ON PLAN.
- PATCH AND REPAIR ALL EXISTING FIREPROOFING ON EXISTING STRUCTURAL MEMBERS, INCLUDING THAT WHICH IS UNCOVERED NEEDING REPAIR AND THAT WHICH IS DISTURBED DURING CONSTRUCTION.
- PATCH AND REPAIR ALL EXISTING FIRE CAULKING AT EXISTING RATED WALLS WHICH IS UNCOVERED NEEDING REPAIR AND THAT WHICH IS DISTURBED DURING CONSTRUCTION. RE-LABEL EXISTING WALL IF NECESSARY.

HAZARDOUS MATERIAL:

- IF THE CONTRACTOR ENCOUNTERS MATERIAL THAT COULD BE HAZARDOUS, THE CONTRACTOR SHALL STOP WORK AND NOTIFY THE OWNER IMMEDIATELY FOR DIRECTION.

Index of Drawings:

001	G001	COVER SHEET/INDEX OF DRAWINGS
002	G002	ABBREVIATIONS, SYMBOLS, GENERAL & PHASING NOTES

STRUCTURAL

003	S101	STRUCTURAL PLAN & NOTES
-----	------	-------------------------

ARCHITECTURAL

004	AD101	DEMOLITION PLAN
005	A101	FLOOR PLAN
006	AC101	CEILING PLANS
007	A201	INTERIOR ELEVATIONS / DETAILS
008	A601	SCHEDULES

MECHANICAL

009	MG101	MECHANICAL NOTES & SYMBOLS LEGEND
010	MD101	MECHANICAL DEMOLITION PLAN
011	MD102	MECHANICAL DEMOLITION PLAN
012	MH101	HVAC PLAN
013	MP101	MECHANICAL PIPING PLAN
014	M-301	MECHANICAL CONTROLS
015	M-501	MECHANICAL DETAILS
016	M-701	MECHANICAL SCHEDULES

ELECTRICAL

017	EG101	ELECTRICAL NOTES & SYMBOLS LEGEND
018	ED101	ELECTRICAL DEMOLITION PLAN
019	EL101	LIGHTING PLANS
020	EP101	POWER & SPECIAL SYSTEMS PLANS
021	EP102	FEEDER ROUTING PLAN
022	E-501	ELECTRICAL SCHEDULES & DETAILS

VENDOR DRAWINGS

023	VEG001	VENDOR DRAWINGS - GE
024	VEG002	VENDOR DRAWINGS - GE
025	VEG003	VENDOR DRAWINGS - GE
026	VEG004	VENDOR DRAWINGS - GE
027	VEG005	VENDOR DRAWINGS - GE
028	VEG006	VENDOR DRAWINGS - GE

029	VSM001	VENDOR DRAWINGS - SIEMENS
030	VSM002	VENDOR DRAWINGS - SIEMENS
031	VSM003	VENDOR DRAWINGS - SIEMENS
032	VSM004	VENDOR DRAWINGS - SIEMENS
033	VSM005	VENDOR DRAWINGS - SIEMENS
034	VSM006	VENDOR DRAWINGS - SIEMENS
035	VSM007	VENDOR DRAWINGS - SIEMENS
036	VSM008	VENDOR DRAWINGS - SIEMENS

BID DOCUMENTS	10/10/2018
CONSTRUCTION DOCUMENTS 100% SUBMITTAL - UPDATE	9/28/2018
CONSTRUCTION DOCUMENTS 100% SUBMITTAL	9/7/2018
DESIGN DEVELOPMENT 90% SUBMITTAL	8/3/2018
SCHEMATIC DESIGN 36% SUBMITTAL 2	7/5/2018
SCHEMATIC DESIGN 35% SUBMITTAL	6/6/2018
Revisions:	Date:

CONSULTANT

Mechanical / Electrical Engineering:
Farris Engineering
12700 W Dodge Road
Omaha, NE 68154
(402) 330-5900
Robert Hotovy

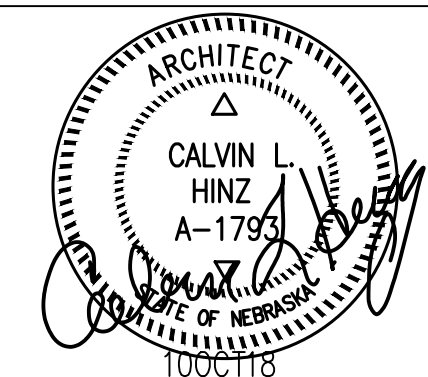
Structural Engineering:
Shaffer & Stevens, P.C.
9910 N 48th Street
Omaha, NE 68152
(402) 455-7698
Donn Shaffer

ARCHITECT/ENGINEER OF RECORD

A/E:
CLH Architects
3705 N 200th St
Elkhorn, NE 68022
(402) 291-6941
Tim Werner



STAMP



Office of
Construction
and Facilities
Management



U.S. Department
of Veterans Affairs

Drawing Title

Cover Sheet

Approved: Project Director

Phase

BID DOCUMENTS

FULLY SPRINKLERED

Project Title

Second CT Scanner
Site Prep Design

Location

Sioux Falls, SD

Issue Date

October 10, 2018

Checked

CLH

Drawn

TDW

Project Number

438-18-103

Building Number

5

Drawing Number

G001

6/14/2008 12:38:03 PM

File Path

VA FORM 08 - 6231

1

2

3

4

5

6

7

8

9

10

ABBREVIATIONS

AB	ANCHOR BOLT, AUGER BORING	FA	FIRE ALARM	R	RADIUS, RISER, RUBBER SHEATH
ACT	ACOUSTIC TILE	FD	FLOOR DRAIN, FIRE DAMPER	RA	RETURN AIR
ACST	ACOUSTIC	FDN	FOUNDATION	RAD	RADIUS
ADJ	ADJUSTABLE	FDR	FEEDER	RB	RESILIENT VINYL BASE
AFF	ABOVE FINISHED FLOOR	FE	FIRE EXTINGUISHER	RCP	REINFORCED CONCRETE PIPE, REFLECTED CEILING PLAN
AHU	AIR HANDLING UNIT	FEC	FIRE EXTINGUISHER CABINET	RECP	RECEPTACLE
ALT	ALTERNATE	FFE	FINISHED FLOOR ELEVATION	REINF	REINFORCEMENT
AL	ALUMINUM	FIG	FIGURE	REG	REGULATOR, REGISTER
ALC	ALCOVE	FIN	FINISH	REQD	REQUIRED
APPROX	APPROXIMATE	FL	FLOOR, FLASHING, FLOW LINE	REV	REVISION
ARCH	ARCHITECTURAL	FLUOR	FLUORESCENT	RF	ROOF, RETURN FAN
ATS	AUTOMATIC TRANSFER SWITCH	FR	FRAME	RHC	REHEAT COIL
BD	BOARD	FTG	FOOTING	RM	ROOM
BLDG	BUILDING	FXTR	FIXTURE	RPM	REVOLUTIONS PER MINUTE
BLK	BLOCK	GAGE	GAGE	RVT	RESILIENT VINYL TILE
BM	BEAM	GALV	GALVANIZED	SAN	SANITARY SEWER
B	BOTTOM	GFI	GROUND FAULT INTERRUPT	SCH	SCHEDULE
BRG	BEARING	GL	GLASS	SD	SPLITTER DAMPER, STORM DRAIN SECTION
BSMT	BASEMENT	GWB	GYPSTUM WALL BOARD	SECT	SECTION
C	CELSIUS	GYP	GYPSTUM	SG	SUPPLY GRILLE
CAP	CAPACITY	HGT,H	HEIGHT, HUMIDIFIER	SH	SHEET
CC	CENTER TO CENTER	HB	HOSE BIBB	SIM	SIMILAR
CD	CEILING DIFFUSER	1 PH	SINGLE PHASE	1 PH	SINGLE PHASE
CCT	CUBICAL CURTAIN TRACK	HC	HANDICAPPED	SL	SLOPE
CEM	CEMENT	HDW	HARDWARE	SP	STATIC PRESSURE, SINGLE POLE
CG	CORNER GUARD	HORIZ	HORIZONTAL	SPDT	SINGLE POLE, DOUBLE THROW
CH	CHILLER	HR	HOUR, HAND RAIL	SPEC	SPECIFICATION
CI	CAST IRON, COURTYARD INLET	HSKP	HOUSEKEEPING	SPST	SINGLE POLE, SINGLE THROW
CIP	CAST IRON PIPE	INT	INTERIOR	SQ	SQUARE
CIR	CIRCULATING	INSUL	INSULATION, INSULATED	SR	SUPPLY REGISTER
CJ	CONTROL JOINT	INV	INVERT	SS	SANITARY SEWER
CKT	CIRCUIT	JB	JUNCTION BOX	ST	STEAM, SINGLE THROW, STREET, STAFF
CL	CENTERLINE	JCT	JUNCTION	STA	STATION
CLN	CLEAN	JT	JOINT	STD	STANDARD
CLG	CEILING	KO	KNOCK OUT	STL	STEEL
CLR	CLEAR	KVA	KILOVOLT-AMPERE	STRUCT	STRUCTURAL
CMP	CORRUGATED METAL PIPE	KW	KILOWATT	SUP	SUPPORT
CMPA	CORRUGATED METAL PIPE ARCH	L	LOUVER, LENGTH, LENGTH OF CURVE	SUSP	SUSPENDED
CMU	CONCRETE MASONRY UNITS	LT	LIGHT	SV	SHEET VINYL
CND,C	CONDUIT	LAV	LAVATORY VERTICAL	SW	SWITCH, SIDEWALK
CNDS	CONDENSATE	M	METER, MEGA	SWBD	SWITCHBOARD
CO	CLEANOUT	MAS	MASONRY	SWGR	SWITCHGEAR
COL	COLUMN	MATL	MATERIAL	T	TILE,TOP,TANGENT
COMM	COMMUNICATION	MAX	MAXIMUM	T&B	TOP AND BOTTOM
CONC	CONCRETE	MECH	MECHANICAL	TEL	TELEPHONE
COND	CONDUCTOR	MET/MTL	METAL	TEMP	TEMPERATURE, TEMPORARY
CONN	CONNECTION	MH	MANHOLE	TERM	TERMINAL
CONST	CONSTRUCTION	MIN	MINIMUM, MINUTE	3/C	THREE CONDUCTOR
CONT	CONTINUOUS	MISC	MISCELLANEOUS	3/P	THREE POLE
CONV	CONVERTER	MM,mm	MILLIMETER	3 WAY	THREE WAY
CP	NONREINFORCED CONCRETE PIPE	MTD	MOUNTED	TO	TOP OF
CR	CHAIR OR CRASH RAIL	MTG	MOUNTING	TRANS	TRANSITION
CS	CONCRETE SEALER/SURFACE	MMP	MEMBRANE WATERPROOFING	TS	TOP OF STEEL, TOP OF STONE, TOP OF SLAB
CT	CERAMIC TILE, CURRENT TRANSFORMER, COOLING TOWER	MULL	MULLION	TV	TELEVISION
CTR	CENTER, COOLING TOWER RETURN	NA	NOT APPLICABLE	TW	TOP OF WALL
CTS	COOLING TOWER SUPPLY	NEC	NATIONAL ELECTRIC CODE	TYP	TYPICAL
CW	COLD WATER	NEG	NEGATIVE	UH	UNIT HEATER
CPT	CARPET	NEUT	NEUTRAL	V	VENT,VOLT,VALVE
DET, DTL	DETAIL	NIC	NOT IN CONTRACT	VA	VOLT AMPRE
DIA	DIAMETER	NOM	NOMINAL	VAC	VACUUM
DM	DIMENSION	NTS	NOT TO SCALE	VCT	VINYL COMPOSITION TILE
DMPR	DAMPER	OA	OUTSIDE AIR	VENT	VENTILATING
DN	DOWN	OC	ON CENTER	VERT	VERTICAL
DP	DISTRIBUTION PANEL	OD	OUTSIDE DIAMETER	VEST	VESTIBULE
DS	DOWNSPOUT, STORM DRAINAGE STRUCTURE	OF	OVERFLOW DRAIN	VS	VENT STACK
DW	DOMESTIC WATER	OPNG	OPENING	VTR	VENT THRU ROOF
DWG	DRAWING	OPP	OPPOSITE	VWC	VINYL WALL COVERING
EA	EACH	OVHD,OH	OVERHEAD	W	WIDTH, WASTE, WATER, WATT, WEST, WIRE, WATER LINE STRUCTURE
EF	EACH FACE, EXHAUST FAN	P	PIPE, POLE	WA	WATT
EG	EXHAUST GRILLE	PB	PULL BOX	W/	WITH
EJ	EXPANSION JOINT	PAF	POWDER ACTUATED FASTENER	W/O	WITHOUT
ELEV	ELEVATION	PIV	POST INDICATOR VALVE	WC	WATER CLOSET, WHEEL CHAIR
ELEC	ELECTRIC, ELECTRICAL CLOSET	PL	PLATE	WD	WIDTH, WINDOW DIMENSION
EMER	EMERGENCY	PLYWD	PLYWOOD	WG	WALL GUARD
EPDM	ROOF MEMBRANE	PNL	PANEL	WP	WATERPROOF, WEATHERPROOF
EQ	EQUAL	PNT	PANT	WS	WASTE STACK, WATER SURFACE, WATERSTOP
EQUIP	EQUIPMENT	PRELIM	PRELIMINARY	WT	WEIGHT
EW	EACH WAY	PRIM	PRIMARY	WWF	WELDED WIRE FABRIC
EWG	ELECTRIC WATER COOLER	PT	POINT, POINT OF TANGENT		
EXH	EXHAUST	PTN	PARTITION		
EXIST	EXISTING	PVC	POINT OF VERTICAL CURVE, POLY VINYL CHLORIDE PAVEMENT		
EXP	EXPANSION, EXPOSED				
EXP JT	EXPANSION JOINT				

CONSULTANT

Mechanical / Electrical Engineering:	Structural Engineering:
Farris Engineering	Shaffer & Stevens, P.C.
12700 N Dodge Road	3705 N 48th Street
Omaha, NE 68154	Omaha, NE 68152
(402) 330-5900	(402) 455-7698
Robert Hotovy	Donn Shaffer

ARCHITECT/ENGINEER OF RECORD

A/E:	CLH Architects
3705 N 48th St	Elkhorn, NE 68022
(402) 291-6941	Tim Werner

STAMP

CLH
Calvin L. Hinz
ARCHITECTS P.C.

CALVIN L. HINZ
A-1799
STATE OF NEBRASKA
1004-118

Office of Construction and Facilities Management

VA U.S. Department of Veterans Affairs

Drawing Title

Abbreviations and Notes

Phase

BID DOCUMENTS

Project Title

Second CT Scanner Site Prep Design

Project Number

438-18-103

Building Number

5

Drawing Number

G002

Location

Sioux Falls, SD

Issue Date

October 10, 2018

Checked

CLH

Drawn

TDW

ABBREVIATIONS

AB	ANCHOR BOLT, AUGER BORING	FA	FIRE ALARM	R	RADIUS, RISER, RUBBER SHEATH
ACT	ACOUSTIC TILE	FD	FLOOR DRAIN, FIRE DAMPER	RA	RETURN AIR
ACST	ACOUSTIC	FDN	FOUNDATION	RAD	RADIUS
ADJ	ADJUSTABLE	FDR	FEEDER	RB	RESILIENT VINYL BASE
AFF	ABOVE FINISHED FLOOR	FE	FIRE EXTINGUISHER	RCP	REINFORCED CONCRETE PIPE, REFLECTED CEILING PLAN
AHU	AIR HANDLING UNIT	FEC	FIRE EXTINGUISHER CABINET	RECP	RECEPTACLE
ALT	ALTERNATE	FFE	FINISHED FLOOR ELEVATION	REINF	REINFORCEMENT
AL	ALUMINUM	FIG	FIGURE	REG	REGULATOR, REGISTER
ALC	ALCOVE	FIN	FINISH	REQD	REQUIRED
APPROX	APPROXIMATE	FL	FLOOR, FLASHING, FLOW LINE	REV	REVISION
ARCH	ARCHITECTURAL	FLUOR	FLUORESCENT	RF	ROOF, RETURN FAN
ATS	AUTOMATIC TRANSFER SWITCH	FR	FRAME	RHC	REHEAT COIL
BD	BOARD	FTG	FOOTING	RM	ROOM
BLDG	BUILDING	FXTR	FIXTURE	RPM	REVOLUTIONS PER MINUTE
BLK	BLOCK	GAGE	GAGE	RVT	RESILIENT VINYL TILE
BM	BEAM	GALV	GALVANIZED	SAN	SANITARY SEWER
B	BOTTOM	GFI	GROUND FAULT INTERRUPT	SCH	SCHEDULE
BRG	BEARING	GL	GLASS	SD	SPLITTER DAMPER, STORM DRAIN SECTION
BSMT	BASEMENT	GWB	GYPSTUM WALL BOARD	SECT	SECTION
C	CELSIUS	GYP	GYPSTUM	SG	SUPPLY GRILLE
CAP	CAPACITY	HGT,H	HEIGHT, HUMIDIFIER	SH	SHEET
CC	CENTER TO CENTER	HB	HOSE BIBB	SIM	SIMILAR
CD	CEILING DIFFUSER	1 PH	SINGLE PHASE	1 PH	SINGLE PHASE
CCT	CUBICAL CURTAIN TRACK	HC	HANDICAPPED	SL	SLOPE
CEM	CEMENT	HDW	HARDWARE	SP	STATIC PRESSURE, SINGLE POLE
CG	CORNER GUARD	HORIZ	HORIZONTAL	SPDT	SINGLE POLE, DOUBLE THROW
CH	CHILLER	HR	HOUR, HAND RAIL	SPEC	SPECIFICATION
CI	CAST IRON, COURTYARD INLET	HSKP	HOUSEKEEPING	SPST	SINGLE POLE, SINGLE THROW
CIP	CAST IRON PIPE	INT	INTERIOR	SQ	SQUARE
CIR	CIRCULATING	INSUL	INSULATION, INSULATED	SR	SUPPLY REGISTER
CJ	CONTROL JOINT	INV	INVERT	SS	SANITARY SEWER
CKT	CIRCUIT	JB	JUNCTION BOX	ST	STEAM, SINGLE THROW, STREET, STAFF
CL	CENTERLINE	JCT	JUNCTION	STA	STATION
CLN	CLEAN	JT	JOINT	STD	STANDARD
CLG	CEILING	KO	KNOCK OUT	STL	STEEL
CLR	CLEAR	KVA	KILOVOLT-AMPERE	STRUCT	STRUCTURAL
CMP	CORRUGATED METAL PIPE	KW	KILOWATT	SUP	SUPPORT
CMPA	CORRUGATED METAL PIPE ARCH	L	LOUVER, LENGTH, LENGTH OF CURVE	SUSP	SUSPENDED
CMU	CONCRETE MASONRY UNITS	LT	LIGHT	SV	SHEET VINYL
CND,C	CONDUIT	LAV	LAVATORY VERTICAL	SW	SWITCH, SIDEWALK
CNDS	CONDENSATE	M	METER, MEGA	SWBD	SWITCHBOARD
CO	CLEANOUT	MAS	MASONRY	SWGR	SWITCHGEAR
COL	COLUMN	MATL	MATERIAL	T	TILE,TOP,TANGENT
COMM	COMMUNICATION	MAX	MAXIMUM	T&B	TOP AND BOTTOM
CONC	CONCRETE	MECH	MECHANICAL	TEL	TELEPHONE
COND	CONDUCTOR	MET/MTL	METAL	TEMP	TEMPERATURE, TEMPORARY
CONN	CONNECTION	MH	MANHOLE	TERM	TERMINAL
CONST	CONSTRUCTION	MIN	MINIMUM, MINUTE	3/C	THREE CONDUCTOR
CONT	CONTINUOUS	MISC	MISCELLANEOUS	3/P	THREE POLE
CONV	CONVERTER	MM,mm	MILLIMETER	3 WAY	THREE WAY
CP	NONREINFORCED CONCRETE PIPE	MTD	MOUNTED	TO	TOP OF
CR	CHAIR OR CRASH RAIL	MTG	MOUNTING	TRANS	TRANSITION
CS	CONCRETE SEALER/SURFACE	MMP	MEMBRANE WATERPROOFING	TS	TOP OF STEEL, TOP OF STONE, TOP OF SLAB
CT	CERAMIC TILE, CURRENT TRANSFORMER, COOLING TOWER	MULL	MULLION	TV	TELEVISION
CTR	CENTER, COOLING TOWER RETURN	NA	NOT APPLICABLE	TW	TOP OF WALL
CTS	COOLING TOWER SUPPLY	NEC	NATIONAL ELECTRIC CODE	TYP	TYPICAL
CW	COLD WATER	NEG	NEGATIVE	UH	UNIT HEATER
CPT	CARPET	NEUT	NEUTRAL	V	VENT,VOLT,VALVE
DET, DTL	DETAIL	NIC	NOT IN CONTRACT	VA	VOLT AMPRE
DIA	DIAMETER	NOM	NOMINAL	VAC	VACUUM
DM	DIMENSION	NTS	NOT TO SCALE	VCT	VINYL COMPOSITION TILE
DMPR	DAMPER	OA	OUTSIDE AIR	VENT	VENTILATING
DN	DOWN	OC	ON CENTER	VERT	VERTICAL
DP	DISTRIBUTION PANEL	OD	OUTSIDE DIAMETER	VEST	VESTIBULE
DS	DOWNSPOUT, STORM DRAINAGE STRUCTURE	OF	OVERFLOW DRAIN	VS	VENT STACK
DW	DOMESTIC WATER	OPNG	OPENING	VTR	VENT THRU ROOF
DWG	DRAWING	OPP	OPPOSITE	VWC	VINYL WALL COVERING
EA	EACH	OVHD,OH	OVERHEAD	W	WIDTH, WASTE, WATER, WATT, WEST, WIRE, WATER LINE STRUCTURE
EF	EACH FACE, EXHAUST FAN	P	PIPE, POLE	WA	WATT
EG	EXHAUST GRILLE	PB	PULL BOX	W/	WITH
EJ	EXPANSION JOINT	PAF	POWDER ACTUATED FASTENER	W/O	WITHOUT
ELEV	ELEVATION	PIV	POST INDICATOR VALVE	WC	WATER CLOSET, WHEEL CHAIR
ELEC	ELECTRIC, ELECTRICAL CLOSET	PL	PLATE	WD	WIDTH, WINDOW DIMENSION
EMER	EMERGENCY	PLYWD	PLYWOOD	WG	WALL GUARD
EPDM	ROOF MEMBRANE	PNL	PANEL	WP	WATERPROOF, WEATHERPROOF
EQ	EQUAL	PNT	PANT	WS	WASTE STACK, WATER SURFACE, WATERSTOP
EQUIP	EQUIPMENT	PRELIM	PRELIMINARY	WT	WEIGHT
EW	EACH WAY	PRIM	PRIMARY	WWF	WELDED WIRE FABRIC
EWG	ELECTRIC WATER COOLER	PT	POINT, POINT OF TANGENT		
EXH	EXHAUST	PTN	PARTITION		
EXIST	EXISTING	PVC	POINT OF VERTICAL CURVE, POLY VINYL CHLORIDE PAVEMENT		
EXP	EXPANSION, EXPOSED				
EXP JT	EXPANSION JOINT				

CONSULTANT

Mechanical / Electrical Engineering:	Structural Engineering:
Farris Engineering	Shaffer & Stevens, P.C.
12700 N Dodge Road	3705 N 48th Street
Omaha, NE 68154	Omaha, NE 68152
(402) 330-5900	(402) 455-7698
Robert Hotovy	Donn Shaffer

ARCHITECT/ENGINEER OF RECORD

A/E:	CLH Architects
3705 N 48th St	Elkhorn, NE 68022
(402) 291-6941	Tim Werner

STAMP

CLH
Calvin L. Hinz
ARCHITECTS P.C.

CALVIN L. HINZ
A-1799
STATE OF NEBRASKA
1004-118

Office of Construction and Facilities Management

VA U.S. Department of Veterans Affairs

Drawing Title

Abbreviations and Notes

Phase

BID DOCUMENTS

Project Title

Second CT Scanner Site Prep Design

Project Number

438-18-103

Building Number

5

Drawing Number

G002

Location

Sioux Falls, SD

Issue Date

October 10, 2018

Checked

CLH

Drawn

TDW

ABBREVIATIONS

AB	ANCHOR BOLT, AUGER BORING	FA	FIRE ALARM	R	RADIUS, RISER, RUBBER SHEATH
ACT	ACOUSTIC TILE	FD	FLOOR DRAIN, FIRE DAMPER	RA	RETURN AIR
ACST	ACOUSTIC	FDN	FOUNDATION	RAD	RADIUS
ADJ	ADJUSTABLE	FDR	FEEDER	RB	RESILIENT VINYL BASE
AFF	ABOVE FINISHED FLOOR	FE	FIRE EXTINGUISHER	RCP	REINFORCED CONCRETE PIPE, REFLECTED CEILING PLAN
AHU	AIR HANDLING UNIT	FEC	FIRE EXTINGUISHER CABINET	RECP	RECEPTACLE
ALT	ALTERNATE	FFE	FINISHED FLOOR ELEVATION	REINF	REINFORCEMENT
AL	ALUMINUM	FIG	FIGURE	REG	REGULATOR, REGISTER
ALC	ALCOVE	FIN	FINISH	REQD	REQUIRED
APPROX	APPROXIMATE	FL	FLOOR, FLASHING, FLOW LINE	REV	REVISION
ARCH	ARCHITECTURAL	FLUOR	FLUORESCENT	RF	ROOF, RETURN FAN
ATS	AUTOMATIC TRANSFER SWITCH	FR	FRAME	RHC	REHEAT COIL
BD	BOARD	FTG	FOOTING	RM	ROOM
BLDG	BUILDING	FXTR	FIXTURE	RPM	REVOLUTIONS PER MINUTE
BLK	BLOCK	GAGE	GAGE	RVT	RESILIENT VINYL TILE
BM	BEAM	GALV	GALVANIZED	SAN	SANITARY SEWER
B	BOTTOM	GFI	GROUND FAULT INTERRUPT	SCH	SCHEDULE
BRG	BEARING	GL	GLASS	SD	SPLITTER DAMPER, STORM DRAIN SECTION
BSMT	BASEMENT	GWB	GYPSTUM WALL BOARD	SECT	SECTION
C	CELSIUS	GYP	GYPSTUM	SG	SUPPLY GRILLE
CAP	CAPACITY	HGT,H	HEIGHT, HUMIDIFIER	SH	SHEET
CC	CENTER TO CENTER	HB	HOSE BIBB	SIM	SIMILAR
CD	CEILING DIFFUSER	1 PH	SINGLE PHASE	1 PH	SINGLE PHASE
CCT	CUBICAL CURTAIN TRACK	HC	HANDICAPPED	SL	SLOPE
CEM	CEMENT	HDW	HARDWARE	SP	STATIC PRESSURE, SINGLE POLE
CG	CORNER GUARD	HORIZ	HORIZONTAL	SPDT	SINGLE POLE, DOUBLE THROW
CH	CHILLER	HR	HOUR, HAND RAIL	SPEC	SPECIFICATION
CI	CAST IRON, COURTYARD INLET	HSKP	HOUSEKEEPING	SPST	SINGLE POLE, SINGLE THROW
CIP	CAST IRON PIPE	INT	INTERIOR	SQ	SQUARE
CIR	CIRCULATING	INSUL	INSULATION, INSULATED	SR	SUPPLY REGISTER
CJ	CONTROL JOINT	INV	INVERT	SS	SANITARY SEWER
CKT	CIRCUIT	JB	JUNCTION BOX	ST	STEAM, SINGLE THROW, STREET, STAFF
CL	CENTERLINE	JCT	JUNCTION	STA	STATION
CLN	CLEAN	JT	JOINT	STD	STANDARD
CLG	CEILING	KO	KNOCK OUT	STL	STEEL
CLR	CLEAR	KVA	KILOVOLT-AMPERE	STRUCT	STRUCTURAL
CMP	CORRUGATED METAL PIPE	KW	KILOWATT	SUP	SUPPORT
CMPA	CORRUGATED METAL PIPE ARCH	L	LOUVER, LENGTH, LENGTH OF CURVE	SUSP	SUSPENDED
CMU	CONCRETE MASONRY UNITS	LT	LIGHT	SV	SHEET VINYL
CND,C	CONDUIT	LAV	LAVATORY VERTICAL	SW	SWITCH, SIDEWALK
CNDS	CONDENSATE	M	METER, MEGA	SWBD	SWITCHBOARD
CO	CLEANOUT	MAS	MASONRY	SWGR	SWITCHGEAR
COL	COLUMN	MATL	MATERIAL	T	TILE,TOP,TANGENT
COMM	COMMUNICATION	MAX	MAXIMUM	T&B	TOP AND BOTTOM
CONC	CONCRETE	MECH	MECHANICAL	TEL	TELEPHONE
COND	CONDUCTOR	MET/MTL	METAL	TEMP	TEMPERATURE, TEMPORARY
CONN	CONNECTION	MH	MANHOLE	TERM	TERMINAL
CONST	CONSTRUCTION	MIN	MINIMUM, MINUTE	3/C	THREE CONDUCTOR
CONT	CONTINUOUS	MISC	MISCELLANEOUS	3/P	THREE POLE
CONV	CONVERTER	MM,mm	MILLIMETER	3 WAY	THREE WAY
CP	NONREINFORCED CONCRETE PIPE	MTD	MOUNTED	TO	TOP OF
CR	CHAIR OR CRASH RAIL	MTG	MOUNTING	TRANS	TRANSITION
CS	CONCRETE SEALER/SURFACE	MMP	MEMBRANE WATERPROOFING	TS	TOP OF STEEL, TOP OF STONE, TOP OF SLAB
CT	CERAMIC TILE, CURRENT TRANSFORMER, COOLING TOWER	MULL	MULLION	TV	TELEVISION
CTR	CENTER, COOLING TOWER RETURN	NA	NOT APPLICABLE	TW	TOP OF WALL
CTS	COOLING TOWER SUPPLY	NEC	NATIONAL ELECTRIC CODE	TYP	TYPICAL
CW	COLD WATER	NEG	NEGATIVE	UH	

A

B

C

D

E

F

A

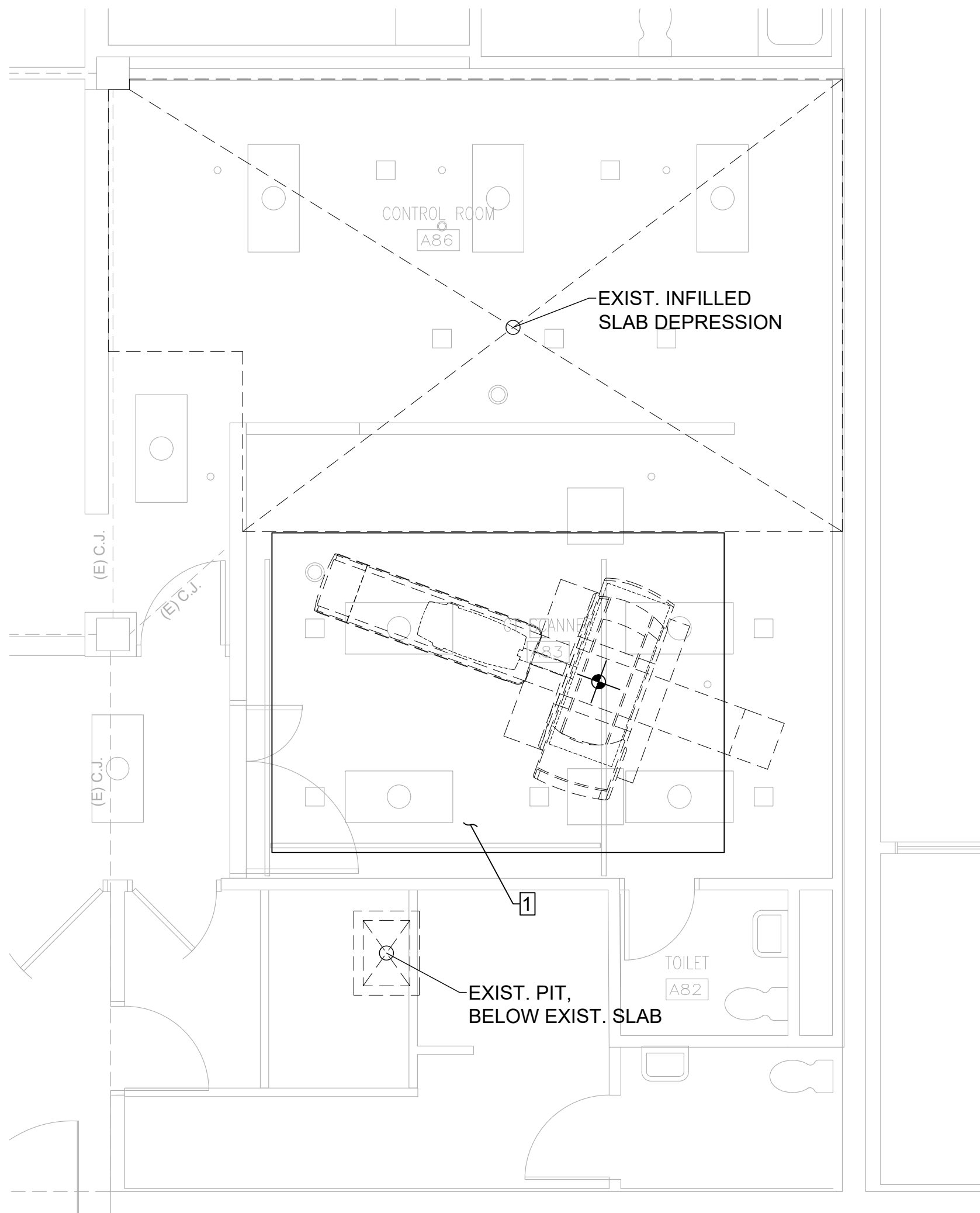
B

C

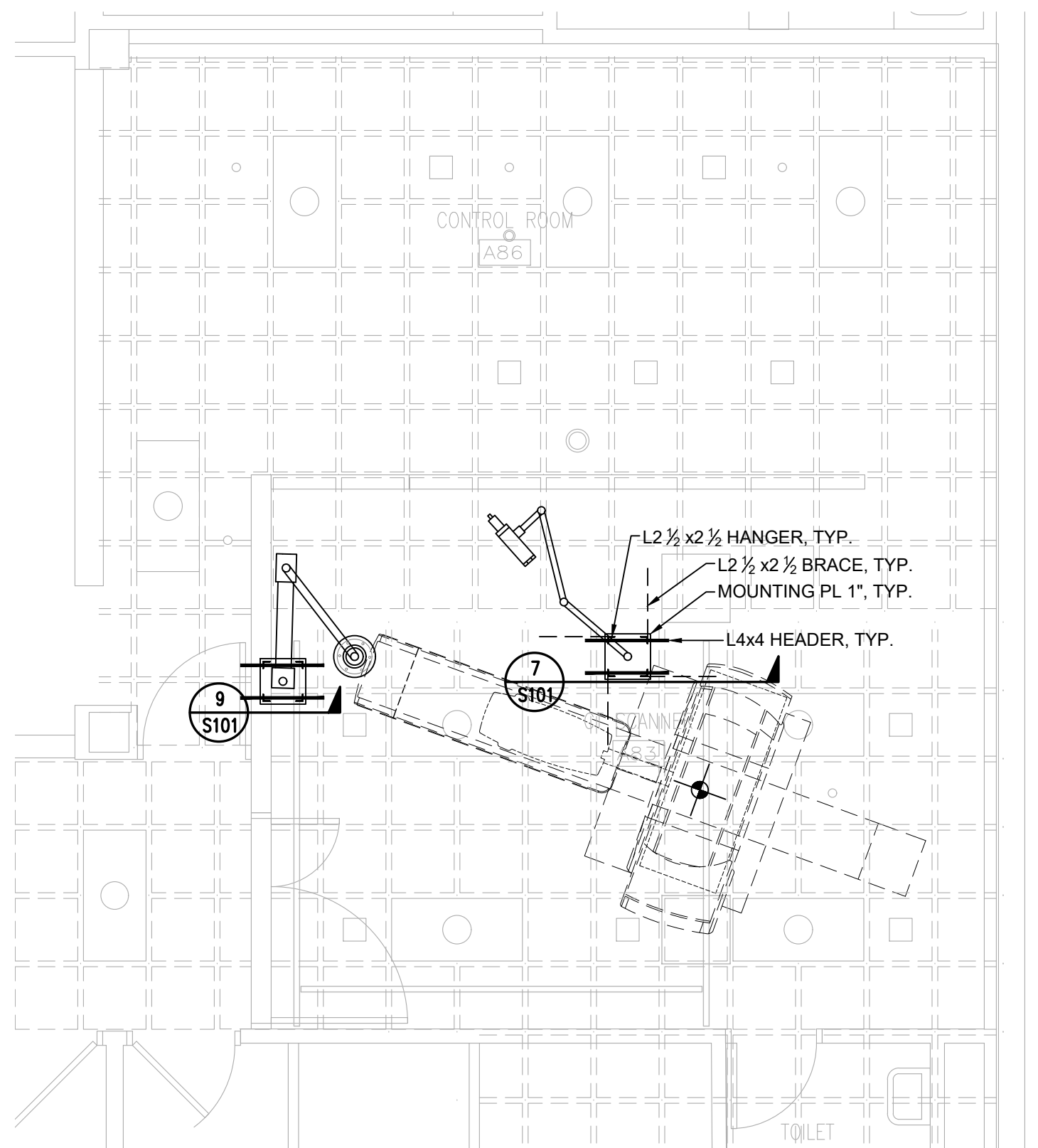
D

E

F



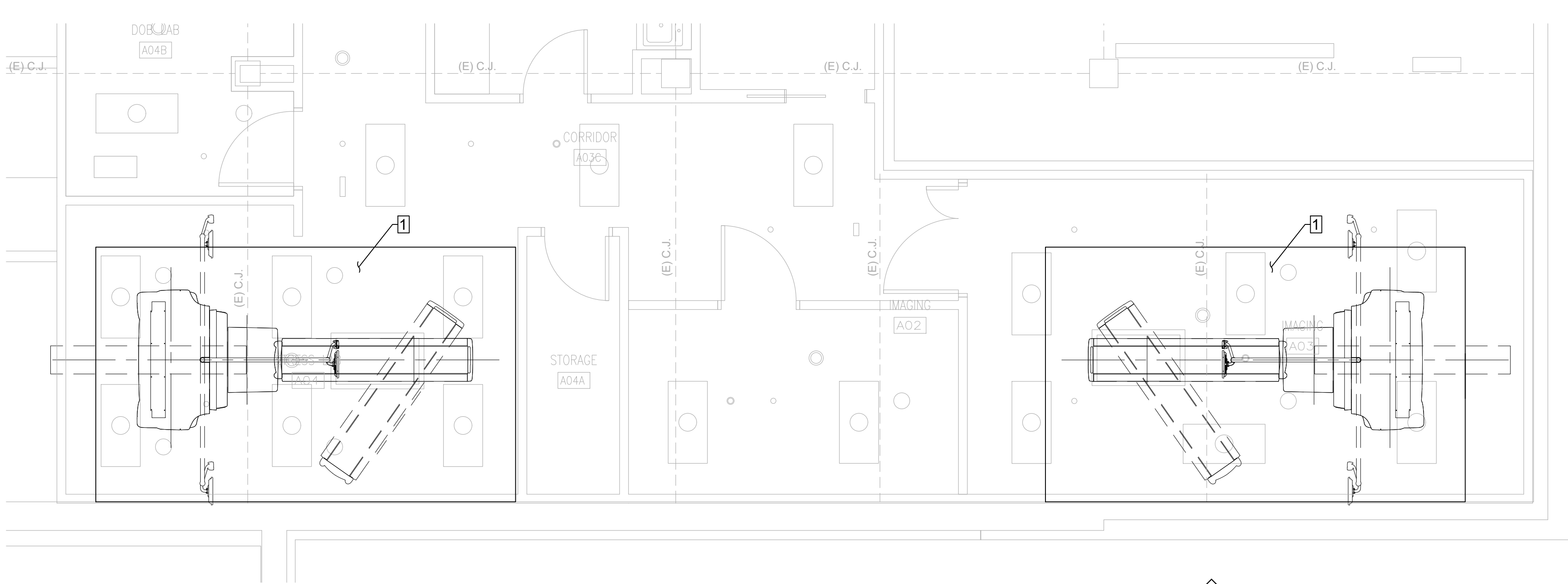
2 CT SCANNER AREA SLAB PLAN
1/4"=1'-0"



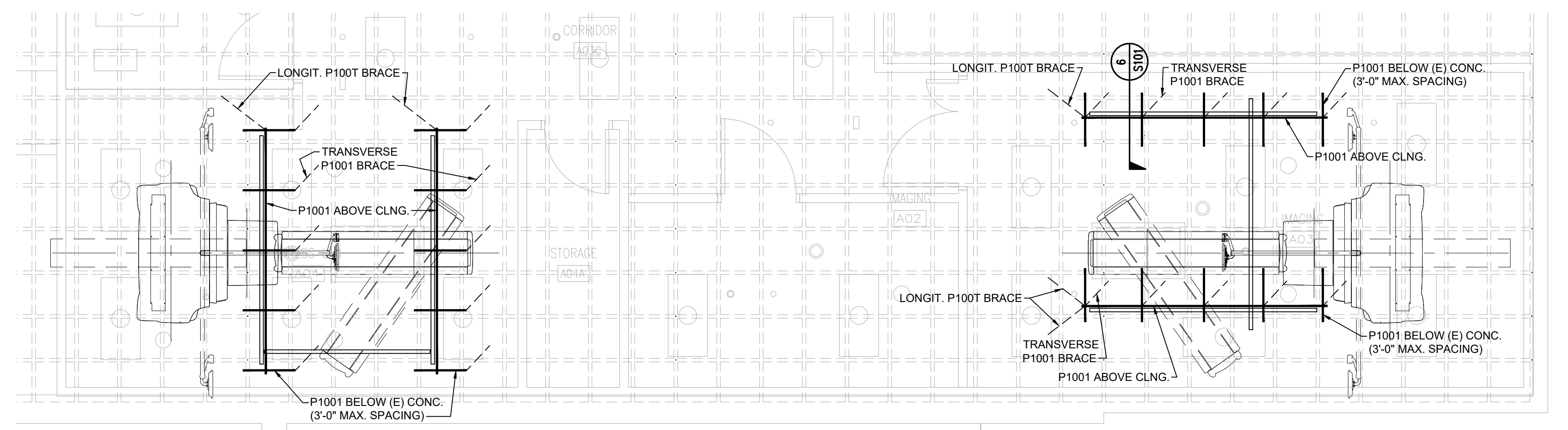
4 CT SCANNER AREA EXISTING ROOF
1/4"=1'-0"

STRUCTURAL PLAN NOTES

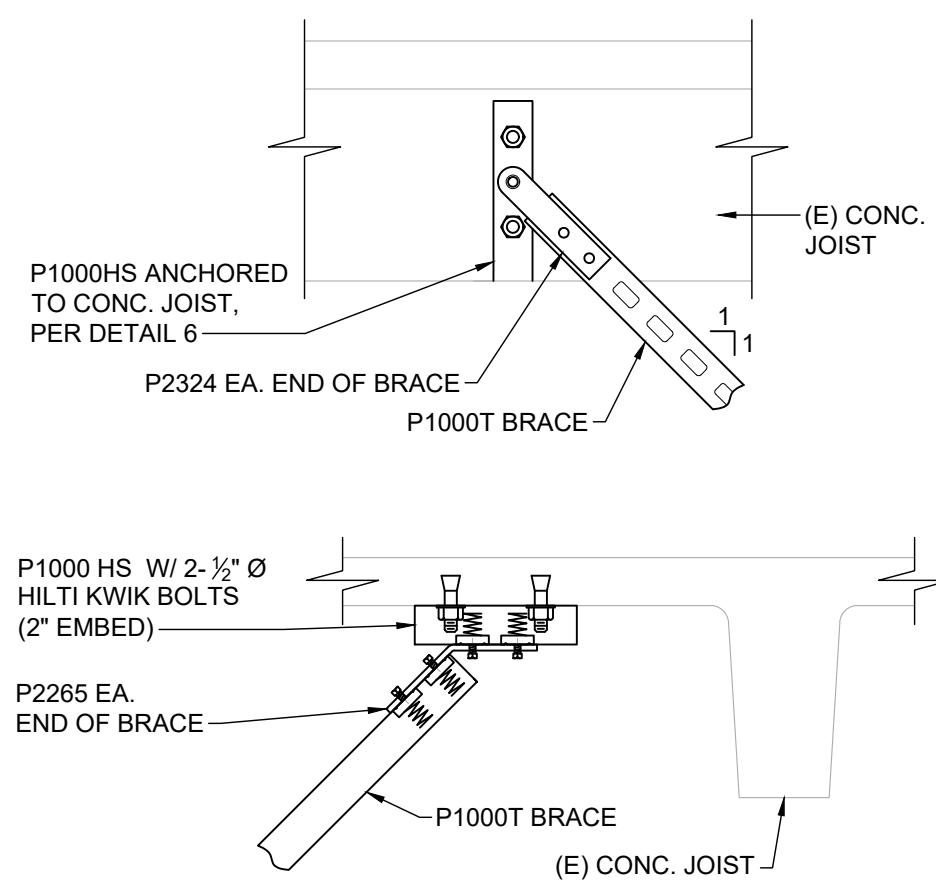
1. SAW CUT & REMOVE EXISTING 4" SLAB-ON-GRADE AND 1 1/2" OF EXISTING SUBGRADE. PROVIDE 5 1/2" NORMAL-WEIGHT CONCRETE SLAB-ON-GRADE WITH #3 @ 12" ON CENTER AT MID-DEPTH OF SLAB. MINIMUM 28-DAY CONCRETE COMPRESSIVE STRENGTH SHALL BE 5,000PSI. CONCRETE MIX DESIGN SUBMITTAL SHALL INCLUDE THE 30 MOST RECENT CYLINDER TEST RESULTS FOR THE PROPOSED MIX. NO MORE THAN THREE 28-DAY TEST RESULTS SHALL BE LESS THAN 5,000PSI, AND NO 28-DAY TEST RESULTS SHALL BE LESS THAN 4350PSI. DURING CONSTRUCTION, SAMPLE ONE SET OF 4 TEST CYLINDERS PER TRUCK; 2 CYLINDERS SHALL BE TESTED AT 7 DAYS AND 2 CYLINDERS SHALL BE TESTED AT 28 DAYS. SUBMIT THE TEST RESULTS TO THE ARCHITECT.



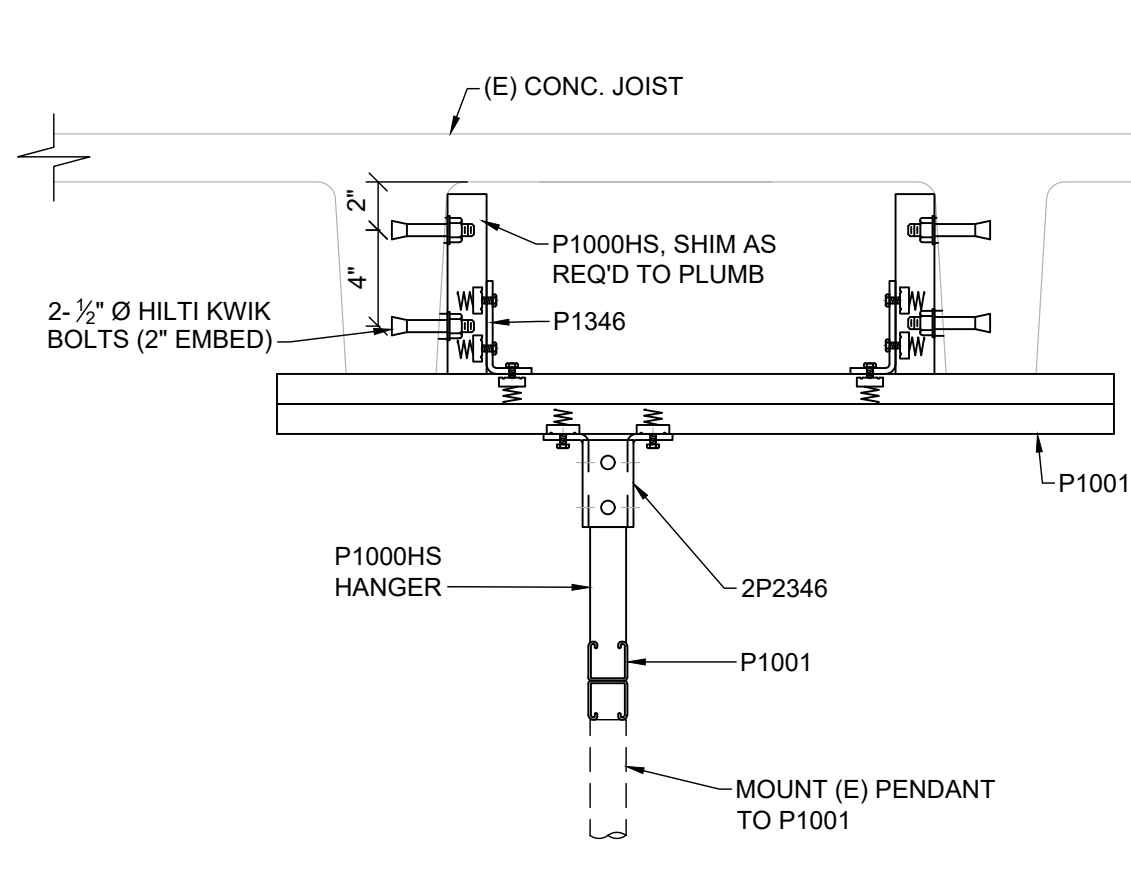
1 NUCLEAR MEDICINE AREA SLAB PLAN
1/4"=1'-0"



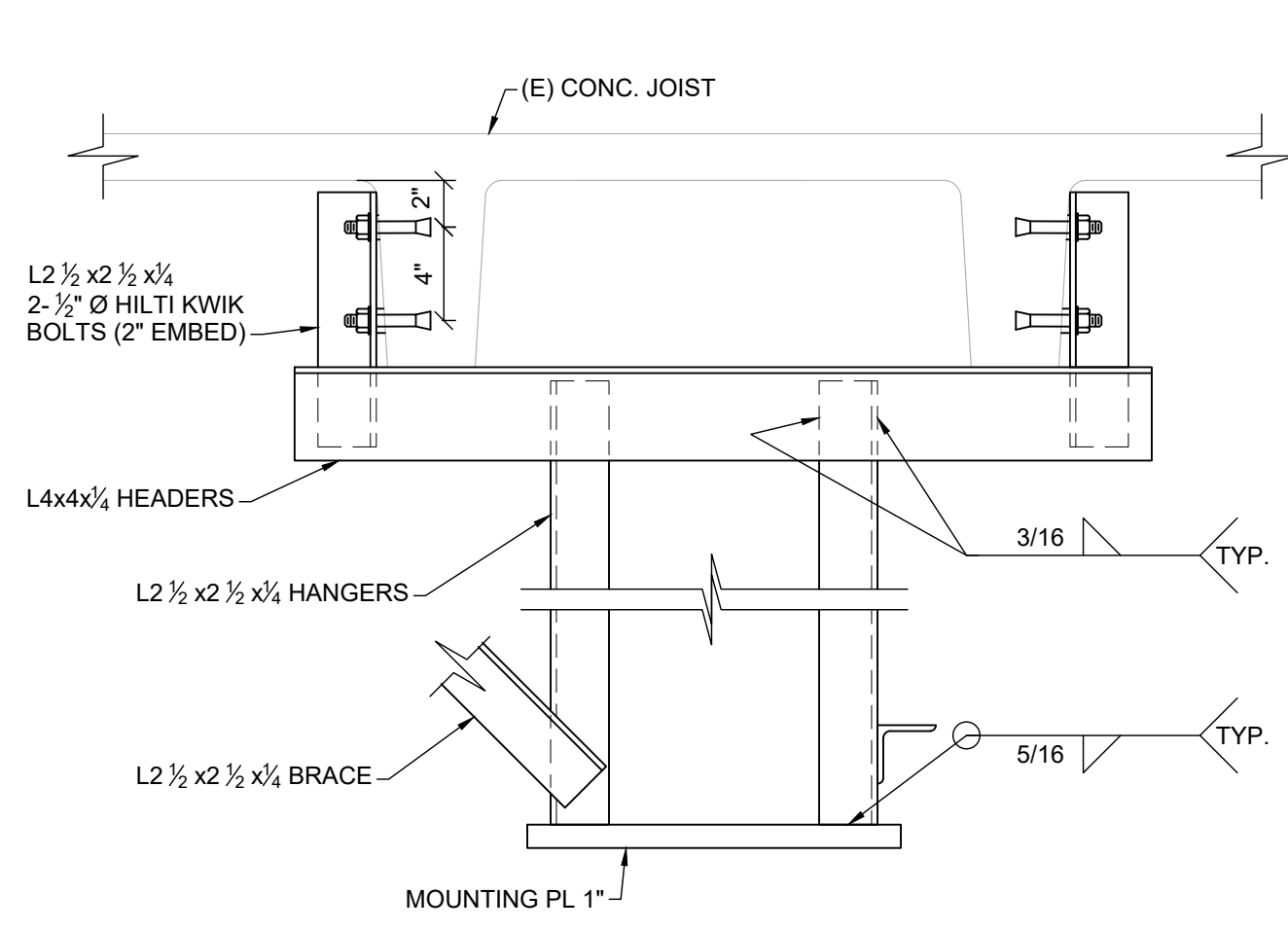
3 NUCLEAR MEDICINE AREA EXISTING ROOF FRAMING
1/4"=1'-0"



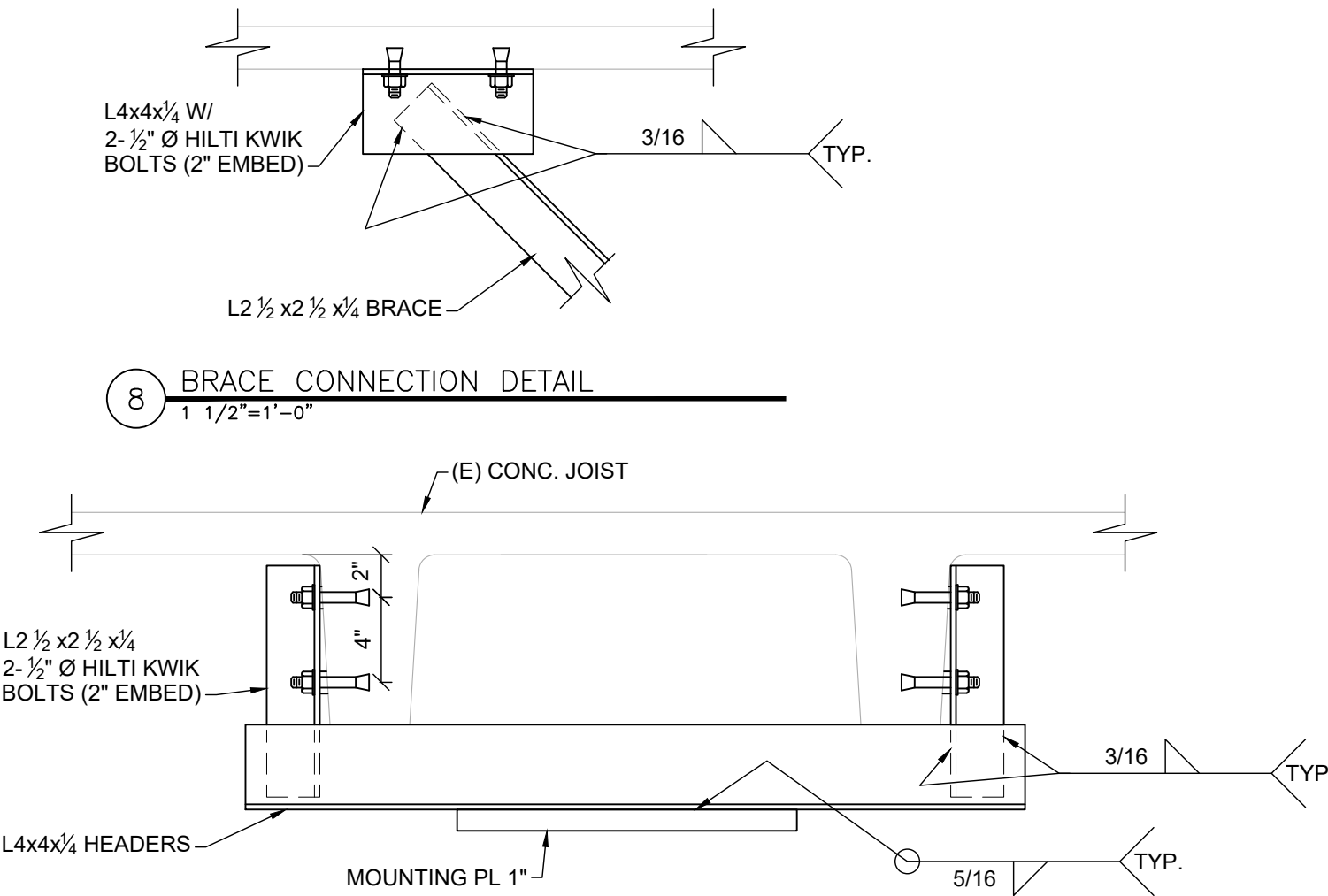
5 BRACE DETAILS
1 1/2"=1'-0"



6 PENDANT HANGING DETAIL
1 1/2"=1'-0"



7 MOUNTING PL HANGING DETAIL
1 1/2"=1'-0"



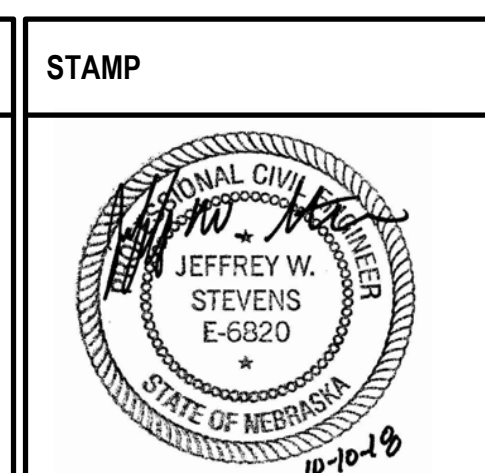
8 BRACE CONNECTION DETAIL
1 1/2"=1'-0"

9 MOUNTING PL HANGING DETAIL
1 1/2"=1'-0"

Revisions:	
BID DOCUMENTS	10/10/2018
CONSTRUCTION DOCUMENTS 100% SUBMITTAL - UPDATE	3/28/2018
CONSTRUCTION DOCUMENTS 100% SUBMITTAL	3/24/2018
DESIGN DEVELOPMENT 90% SUBMITTAL	3/3/2018
SCHEMATIC DESIGN 36% SUBMITTAL 2	1/9/2018
SCHEMATIC DESIGN 35% SUBMITTAL	3/6/2018

CONSULTANT	
Mechanical / Electrical Engineering:	Structural Engineering:
Farris Engineering	Shaffer & Stevens, P.C.
12700 W Dodge Road	9910 N 48th Street
Omaha, NE 68154	Omaha, NE 68152
(402) 330-5900	(402) 455-7698
Robert Hotovy	Donn Shaffer

ARCHITECT/ENGINEER OF RECORD	
A/E:	CLH Architects
3705 N 200th St	Elkhorn, NE 68022
(402) 291-6941	
Tim Werner	



Drawing Title
Plans & Details
Approved: Project Director

Phase
BID DOCUMENTS
FULLY SPRINKLERED

Project Title		Project Number
Second CT Scanner Site Prep Design		438-18-103
Location		Building Number
Sioux Falls, SD		5
Issue Date		Drawing Number
October 10, 2018		S101
Checked	Drawn	
JWS	MGJ	

A

B

C

D

E

F

6/14/2008 12:38:03 PM

File Path

VA FORM 08-6231

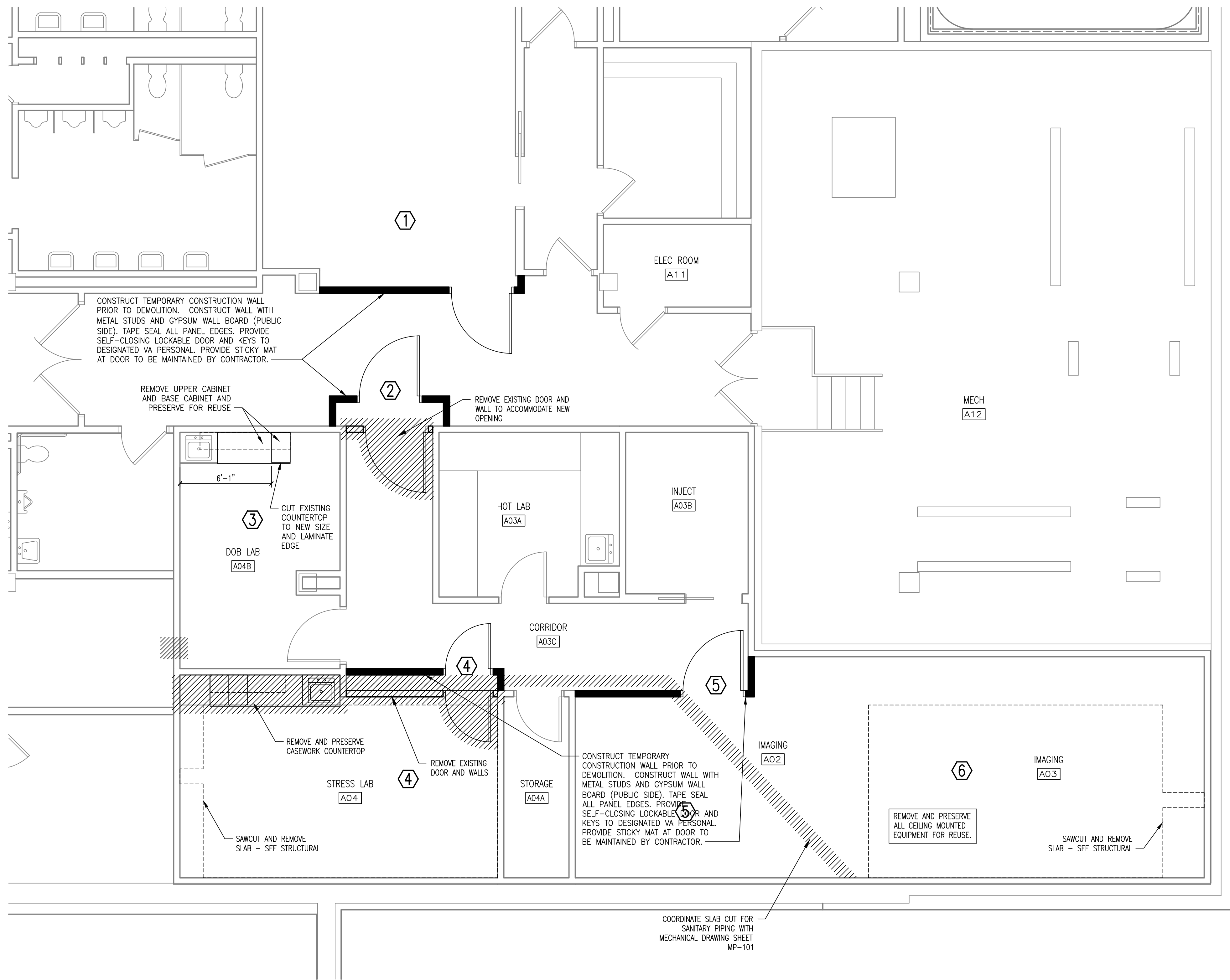
LEGEND:
EXISTING CONSTRUCTION TO REMAIN
EXISTING CONSTRUCTION TO BE REMOVED
TEMPORARY CONSTRUCTION WALL (METAL STUDS (25 GA. 24 OC)

INFECTION CONTROL NOTES:
INFECTION CONTROL WORK TO TAKE PLACE PRIOR TO DEMOLITION.
A. PROVIDE NEGATIVE AIR MACHINE WITH HEPA FILTER IN ALL DEMOLITION AREAS.
B. CONTRACTOR TO VERIFY WITH VA STAFF MINIMUM CORRIDOR WIDTH FOR THE PASSAGE OF BEDS AND OTHER EQUIPMENT.
C. CONTRACTOR IS RESPONSIBLE FOR THE CONTROL OF DUST DURING THE ENTIRE CONSTRUCTION SCHEDULE. SEE SPECIFICATIONS FOR ADDITIONAL DUST CONTROL MEASURES.

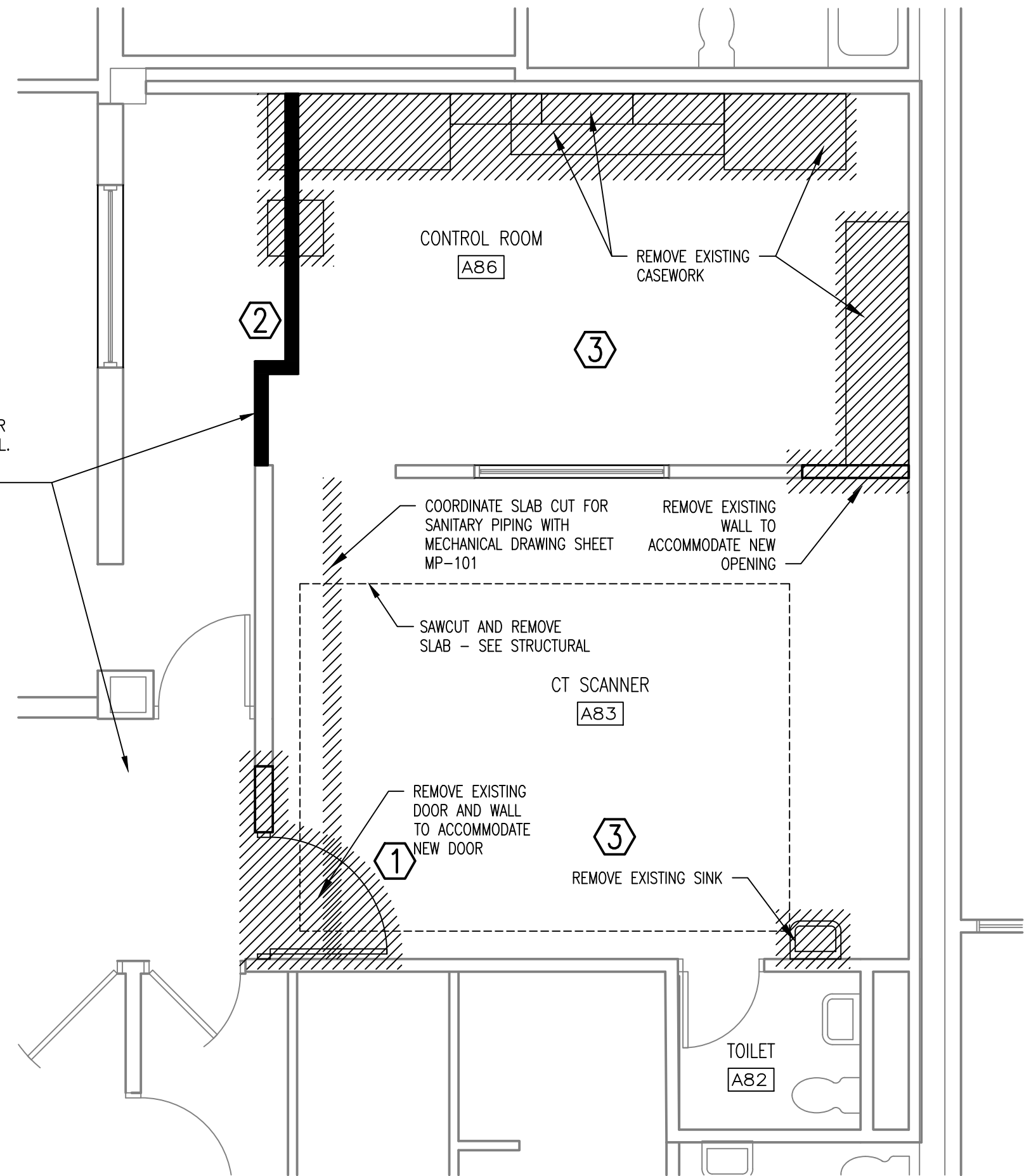
CONSTRUCTION NOISE RESTRICTED:
M-F 8:00A-4:30P
WEEKEND 8:00A-12:00P

PHASING -- NUCLEAR MEDICINE (X)
1. RECEPTION WAITING
1.1. INSTALL TEMPORARY CONSTRUCTION WALL
1.2. BUILD NEW SPACES
1.3. REMOVE CONSTRUCTION WALL
1.4. INSTALL ELECTRICAL EQUIPMENT
2. ENTRY DOOR
2.1. INSTALL TEMPORARY CONSTRUCTION WALL
2.2. DEMOLISH EXISTING DOOR AND INSTALL NEW DOOR. THIS WORK TO BE PERFORMED DURING NON-BUSINESS HOURS.
2.3. REMOVE CONSTRUCTION WALL
3. EXISTING DOB LAB
3.1. SEAL DOOR
3.1. RECONFIGURE CASEWORK. INSTALL NEW.
4. EXISTING STRESS LAB
4.1. INSTALL TEMPORARY CONSTRUCTION WALL
4.2. REMOVE WALL AND DOOR. CREATE BULKHEAD AT EXISTING WALL.
4.3. REMOVE AND PRESERVE EXISTING CASEWORK.
4.4. CONSTRUCT IMAGING A03 INTERIORS
4.5. REMOVE CONSTRUCTION WALL
4.6. INSTALL NEW SPECT/CT
5. EXISTING IMAGING A02 AND A03
5.1. INSTALL TEMPORARY CONSTRUCTION WALL
5.2. BUILD NEW WALLS FOR DOB LAB AND IMAGING
5.3. REMOVE CONSTRUCTION WALL
5.4. CONSTRUCT DOB LAB A04B INTERIORS
6. IMAGING A02
6.1. CONSTRUCT IMAGING A02 INTERIORS
6.2. INSTALL NEW SPECT/CT

PHASING -- CT SCANNER (X)
1. ENTRY DOOR
1.1. DEMOLISH EXISTING DOOR AND INSTALL NEW DOOR. THIS WORK TO BE PERFORMED DURING NON-BUSINESS HOURS. SEAL OPENING DURING BUSINESS HOURS.
2. EXISTING CONTROL ROOM
2.1. INSTALL TEMPORARY CONSTRUCTION WALL TO ISOLATE CONTROL ROOM
2.2. REMOVE EXISTING CASEWORK.
3. CT SCANNER AND CONTROL ROOM
3.1. CONSTRUCT CT SCANNER ROOM INTERIORS
3.2. CONSTRUCT CONTROL ROOM INTERIORS
3.3. INSTALL NEW SPECT/CT



2F NUCLEAR MEDICINE AREA DEMOLITION PLAN
SCALE: 1/4" = 1'-0"



8C CT SCANNER AREA DEMOLITION PLAN
SCALE: 1/4" = 1'-0"

GENERAL DEMOLITION NOTES:

- FOR REMOVAL OF ELECTRICAL FIXTURES, EQUIPMENT, ASSOCIATED WIRING CONDUITS, ETC. AND THE ASSOCIATED DEMOLITION AND RELATED BUILDING DEMOLITION REQUIRED FOR THE INSTALLATION OF NEW OR ALTERED ELECTRICAL FIXTURES, EQUIPMENT, WIRING, CONDUITS ETC. - SEE ELECTRICAL DRAWINGS, NOTES SPECIFICATIONS.
- DEMOLITION PLANS ARE GENERAL AND DIAGRAMMATIC. THE PLANS ARE NOT INTENDED TO REPRESENT THE TOTAL SCOPE OF THE WORK. THESE PLANS DO NOT PURPORT TO SHOW EACH ACTUAL CONDITION AS IT EXISTS IN THE FIELD. IT IS THE CONTRACTORS RESPONSIBILITY THROUGH SITE INSPECTION AND REVIEW OF THE DOCUMENTS TO DETERMINE AND COORDINATE REMOVAL AND DEMOLITION WORK AS REQUIRED TO ACHIEVE THE FINAL PRODUCT AS INDICATED IN THE DOCUMENTS.
- IT IS THE CONTRACTORS RESPONSIBILITY TO THOROUGHLY INSPECT THE SITE AND REVIEW THE DOCUMENTS TO DETERMINE AND COORDINATE REMOVAL AND DEMOLITION WORK AS REQUIRED TO ACHIEVE THE FINAL PRODUCT AS INDICATED IN THE DOCUMENTS.
- REFER TO ROOM FINISH/COLOR SCHEDULE FOR NEW FINISHES. REMOVE, CLEAN, PATCH/REPAIR EXISTING SURFACES/FINISHES AS REQUIRED FOR INSTALLATION OF NEW SCHEDULED FINISHES.
- THE OWNER AND HIS DESIGNATED REPRESENTATIVES HAVE FIRST RIGHT OF REFUSAL REGARDING SALVAGEABLE ITEMS. COORDINATE WITH OWNER OR OWNER'S REPRESENTATIVE PRIOR TO REMOVAL. ALL ITEMS NOT SALVAGED WILL BE REMOVED FROM THE SITE BY THE CONTRACTOR.
- EXISTING STRUCTURAL SYSTEM SHALL NOT BE REMOVED OR MODIFIED UNLESS APPROVED IN ADVANCE BY THE ARCHITECT. MODIFICATIONS TO THE FIRE PROTECTION AND FIRE RESISTIVE RATED WALL OR FLOOR SYSTEMS SHALL BE RESTORED TO MAINTAIN THE REQUIRED FIRE RATING AS PER APPROVAL OF THE ARCHITECT.
- REMOVE EXISTING ELEMENTS/FINISHES NOT REQUIRED IN THE COMPLETED PROJECT AND CONFLICTING WITH NEW FINISHES. REPAIR OR REPLACE ANY WALLS, FLOORS, CEILINGS, OR EQUIPMENT DAMAGED AS A RESULT OF CONSTRUCTION, TO MATCH EXISTING FINISH AND/OR CONDITIONS.
- SEE MECHANICAL AND ELECTRICAL DRAWINGS AND NOTES FOR FURTHER SEQUENCING AND SCOPE OF WORK.
- PROJECT SHALL BE COORDINATED WITH OWNER.
- THESE GENERAL NOTES SHALL APPLY TO ALL DEMOLITION SHEETS.
- HALF TONE AREAS REPRESENT EXISTING CONDITIONS TO REMAIN.
- HATCHED AREA INDICATES ITEMS/ AREA FOR DEMOLITION.
- CONTRACTOR SHALL MAINTAIN NEGATIVE PRESSURE WITH VENTING DIRECTLY TO OUTSIDE DURING DEMOLITION AND NEW CONSTRUCTION ACTIVITIES IN ORDER TO MINIMIZE THE CHANCE FOR AIR POLLUTION TO ENTER THE HOSPITAL VENTILATION SYSTEM. ALL EXISTING RETURN AND SUPPLY AIR DUCTWORK TO BE SECURELY CAPPED WITH SHEET METAL DURING THE CONSTRUCTION PERIOD. THIS REQUIREMENT APPLIES TO ALL WORK AREAS AND SHALL BE COORDINATED WITH THE OWNER.
- DEMOLITION WORK CAUSING VIBRATION AND / OR LOUD NOISE DISRUPTIVE TO HOSPITAL FUNCTIONS AS DEEMED BY THE OWNER SHALL BE DONE OUTSIDE THE HOURS SPECIFIED.
- NOTE THAT BUSINESS WILL BE CONDUCTED AS USUAL IN THE AREAS SURROUNDING THE WORK AREA DURING CONSTRUCTION. CONTRACTOR SHALL COORDINATE WORK WITH BUILDING OWNER AND STAFF TO AVOID DISRUPTION TO ADJACENT AREAS.

BID DOCUMENTS	10/10/2018
CONSTRUCTION DOCUMENTS 100% SUBMITTAL - UPDATE	9/28/2018
CONSTRUCTION DOCUMENTS 100% SUBMITTAL	9/7/2018
DESIGN DEVELOPMENT 90% SUBMITTAL	8/3/2018
SCHEMATIC DESIGN 36% SUBMITTAL 2	7/5/2018
SCHEMATIC DESIGN 35% SUBMITTAL	6/6/2018
Revisions:	Date:

CONSULTANT

Mechanical / Electrical Engineering:
Farris Engineering
12700 W Dodge Road
Omaha, NE 68154
(402) 330-5900
Robert Hotovy

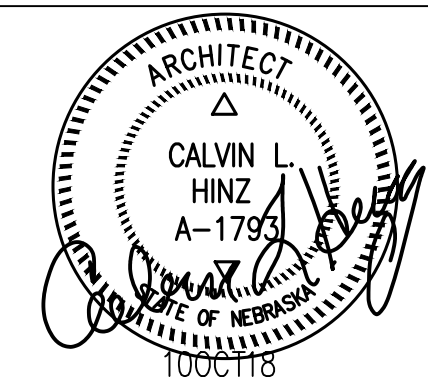
Structural Engineering:
Shaffer & Stevens, P.C.
9910 N 48th Street
Omaha, NE 68152
(402) 455-7698
Donn Shaffer

ARCHITECT/ENGINEER OF RECORD

A/E:
CLH Architects
3705 N 200th St
Elkhorn, NE 68022
(402) 291-6941
Tim Werner



STAMP



Office of
Construction
and Facilities
Management



U.S. Department
of Veterans Affairs

Drawing Title

Demolition Plan

Approved: Project Director

Phase

BID DOCUMENTS

FULLY SPRINKLERED

Project Title

Second CT Scanner
Site Prep Design

Location
Sioux Falls, SD

Issue Date
October 10, 2018

Checked
CLH

Drawn
TDW

Project Number

438-18-103

Building Number
5

Drawing Number

AD101