

**SIGNOFF / APPROVAL NOTES**

1. The facility structure capacity must be able to support the load specified on the installation drawing.
2. Electrical power source provided by the facility, position to be verified in the field.
3. Guldmann Inc. reserves the right to slightly modify the track layout if necessary without Facility approval. This includes lowering the system to avoid ceiling objects.
4. Guldmann Inc. will not be held responsible for any damages, inconvenience, resulting from hitting any non visible conduits during our installation process of which we have not been advised.
5. Modifications of door headers by the facility.
6. Signed drawings are required prior to ordering and installation of ceiling lifts.  
This signature of each drawing confirms agreement of all the conditions listed above.
7. Systems are tested at 1.5 times capacity.  
550 lbs. tested at 825 lbs.; 770 lbs. tested at 1155 lbs.; 825 lbs. tested at 1238 lbs.; 1100 lbs. tested at 1650 lbs.


MY SIGNATURE BELOW VERIFIES THAT I HAVE:

Reviewed all 8 pages, with a total quantity of 5 room(s), 5 system(s) for the approbation of layout for each room and the approbation of structure for each room.

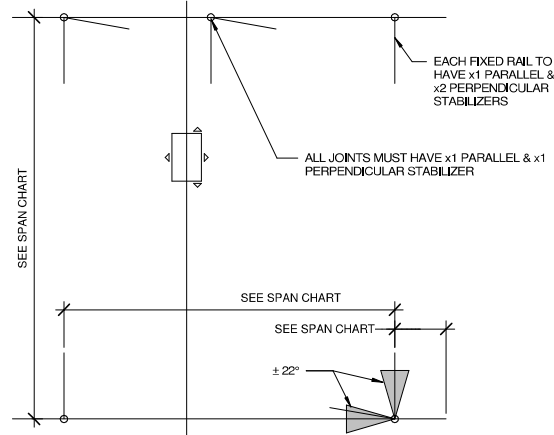
CUSTOMER  
APPROVAL: \_\_\_\_\_ DATE: \_\_\_\_\_

St. Cloud VA Healthcare  
St. Cloud VA Bldg. 51 L1 East  
4801 Veteran Dr.  
St. Cloud, MN 56303  
PROJECT ID:103896

Revision Schedule			
Date	Issued by	Letter	Description
06/02/2024	TRC	A	UPDATED BACKGROUNDS, MINOR ADJUSTMENTS TOP RAILS FOR WALL, DOOR CHANGES
06/17/2024	MGE	B	EXTENDED LIFTS RM 111, RM 117, RM 127. UPDATED CHART. MATERIAL

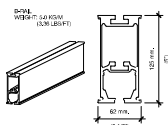
	<b>Guldmann Inc.</b> 14401 McCormick Drive Tampa FL 33638 Unit A Toll Free: 1 (800) 664-8834 Fax: 1 (813) 990-6558 Email: Info@Guldmann.net
<b>NOTES</b> 1. HOIST = 770 LBS 2. FLUSHED RECESSED / TYPE - P 3. CEILING HEIGHT = 8' - 0" AFF TO DECK = 11' - 11" 4. ATTACHMENT TYPE = CONCRETE BEAM SPAN = 2' - 0"	
ACCURATE TO 4" BASED ON PDF CONVERSION	
DATE: 01/24/2024	DRAWN BY: MGE
APPROVED BY:	
PROJECT NAME: St. Cloud VA Bldg. 51 L1 East	
SHEET DESCRIPTION: FACILITY SIGNOFF	
SHEET NO: GUL101	

STABILIZERS CAN BE ROTATED 180°



# 1 BRACING + SUPPORT NTS

SPAN CHART B-RAIL							
LOAD LIMIT		CANTILEVER (SINGL)		CANTILEVER (PAR)		SPAN (BETWEEN SUPPORTS)	
KG	LBS	MM	INCHES	MM	INCHES	MM	INCHES
175	385	565	22 1/4	715	28	5500	215
205	450	525	20 1/2	675	26 1/2	5250	205
255	560	485	19	635	25	4750	186
275	605	485	19	630	24 3/4	4500	176
300	660	455	17 3/4	605	23 3/4	4500	176
350	770	445	17 3/4	595	23 1/4	4000	157
375	825	425	16 1/2	575	22 1/2	4000	157
400	880	425	16 1/2	575	22 1/2	3750	147



# 3 B-RAIL SPAN CHART / WEIGHT / DIMS NTS

## Fixed rail systems

Fixed rail systems must be connected by Guldmann Service Team or by a qualified installer. A Guldmann class I transformer must be used. Installation to follow existing rules for authorized electricians and according to IEC UL 60601-1.

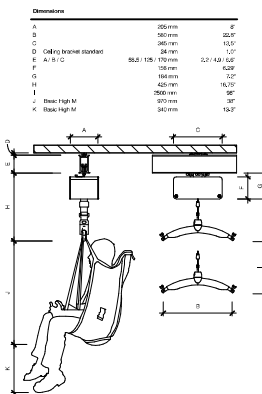
## Terminals on transformers Class I

Double-insulated UL approved cable must be used (Cable specification: UL category: AVL2, min,300V, min, 80° C, min, 18AWG (1 mm2 ))

## Transformer DK-13991

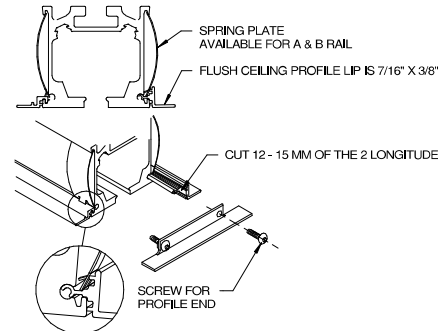
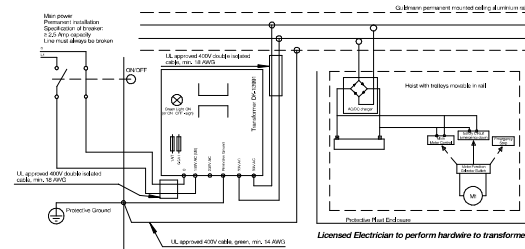
In:  
Terminal 1 = N  
Terminal 2 = 100-115V AC  
Terminal 3 = 230V AC  
Terminal 4 = Protective ground  
Out:  
Terminal 5 = 33V AC  
Terminal 6 = 33V AC

# 2 GH3 TRANSFORMER NTS



# 4 GH3 PATIENT SLING DIMS NTS

POWER TO BE WITHIN 15 FT OF END OF FIXED RAIL



# 5 FLUSH CEILING PROFILE NTS



Guldmann Inc.  
14401 McCormick Drive  
Tampa FL 33626 Unit A  
Tel: 813-944-8834  
Fax: 1-813-944-8858  
Email: info@guldmann.net

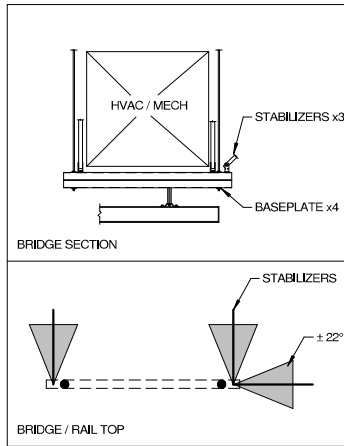
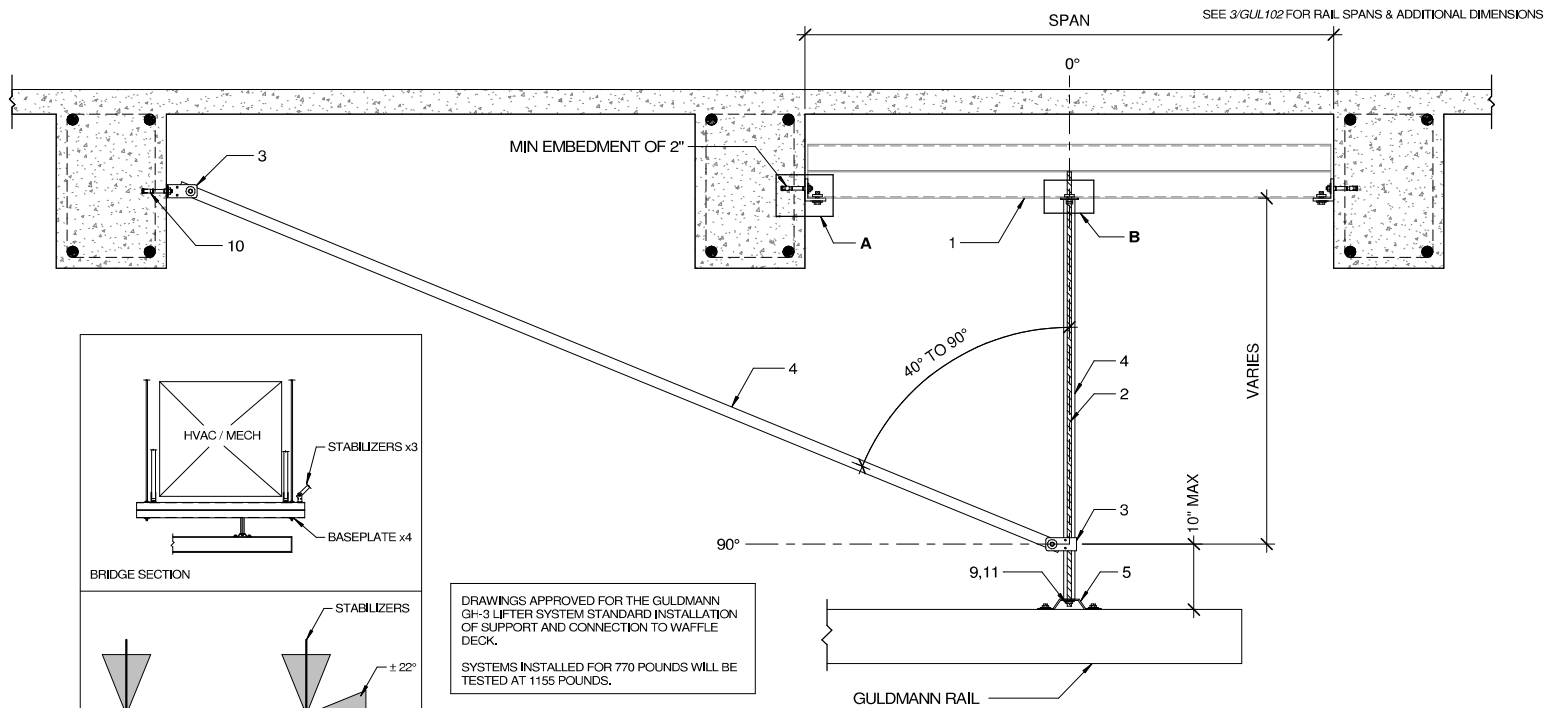
## NOTES

1. HOIST = 770 LBS
2. FLUSHED RECESSED / TYPE - P
3. CEILING HEIGHT = 8' - 0"  
AFF TO DECK = 11' - 11"
4. ATTACHMENT TYPE =  
CONCRETE BEAM  
SPAN = 2' - 0"

## Revision Schedule

Date	Issued by	Number
06/02/2024	TRC	A
06/17/2024	MGE	B

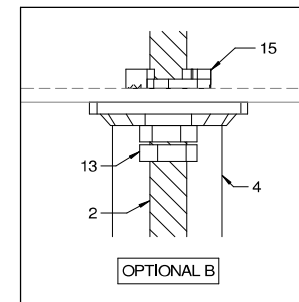
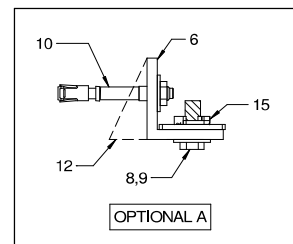
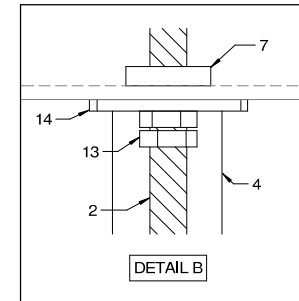
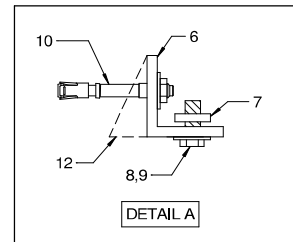
DATE:	01/24/2024	DRAWN BY:	MGE
APPROVED BY:			
PROJECT NAME:	St. Cloud VA Bldg, 51 L1 East		
SHEET DESCRIPTION:	GEN. INFO		
SHEET NO:	GUL102		



DRAWINGS APPROVED FOR THE GULDMANN GH-3 LIFTER SYSTEM STANDARD INSTALLATION OF SUPPORT AND CONNECTION TO WAFFLE DECK.

SYSTEMS INSTALLED FOR 770 POUNDS WILL BE TESTED AT 1155 POUNDS.

WAFFLE DECK / CONCRETE BEAM		
TAG	ITEM NUMBER	DESCRIPTION
1	P5501-T	2-7/16" X 10" B2B STRUT SLOTTED
2	123460	3/8" B7 THREADED ROD
3	550439	STABILIZER BRACKET KIT - GULDMANN
4	550481-US	1" Ø-6013-T6 AL TUBE - GULDMANN
5	550435	CEILING BRACKET KIT - GULDMANN
6	P1026	2 HOLE 90 DEG. BRACKET
7	377882	MQM-F WINGNUT 3/8"
8	411764	3/8" X 1-1/4" HEX BOLT
9	11101273	3/8" X 1-1/4" X 1/8" WASHER (THICK)
10	2231456	3/8" X 3-3/4" KB-T22 ANCHOR
11	1137024	3/8" NYLOCK NUT
12	33873	3/8" BEVELLED WASHER (USED AS NEEDED)
13	411752	3/8" HEX NUT
14	370632	MQZ-L BASEPLATE 3/8"
15	377885	MQA-F SADDLE NUT 3/8" (OPTIONAL)



#### NOTES

1. HOIST = 770 LBS
2. FLUSHED RECESSED / TYPE - P
3. CEILING HEIGHT = 8' - 0"  
AFF TO DECK = 11' - 11"
4. ATTACHMENT TYPE =  
CONCRETE BEAM  
SPAN = 2' - 0"

#### Revision Schedule

Date	Issued by	Number
06/02/2024	TRC	A

DATE:	01/24/2024
DRAWN BY:	MGE

APPROVED BY:

PROJECT NAME:  
St. Cloud Vldg. 51 L1 East

SHEET DESCRIPTION:  
ATTACHMENT

SHEET NO:  
GUL103

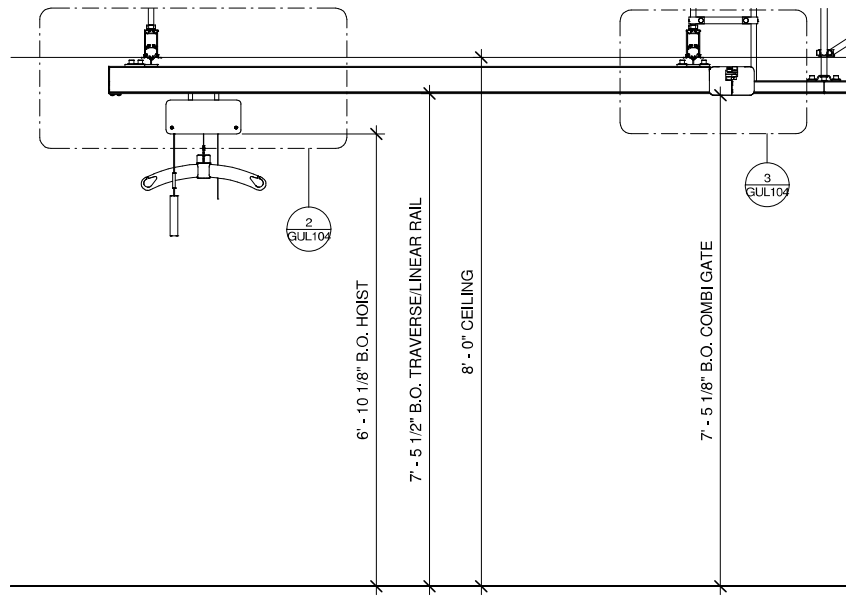
SEE 3/GUL102 FOR RAIL SPANS & ADDITIONAL DIMENSIONS



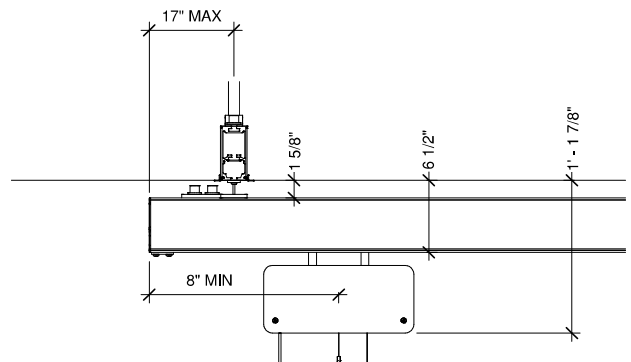
Gulmann Inc.  
14401 McCormick Drive  
Tampa, FL 33626, Unit A  
Tel: 813-986-3554  
Fax: 1-813-986-3558  
Email: info@gulmann.net

# NOTES

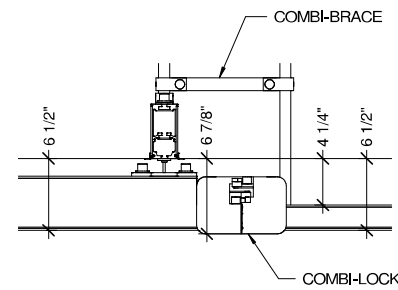
1. HOIST = 770 LBS
2. FLUSHED RECESSED / TYPE - P
3. CEILING HEIGHT = 8' - 0"  
AFF TO DECK = 11' - 11"
4. ATTACHMENT TYPE =  
CONCRETE BEAM  
SPAN = 2' - 0"



① TYP ELEVATION  
3/4" = 1'-0"



② CEILING / HOIST DETAIL  
1 1/2" = 1'-0"



③ CEILING / COMBI-LOCK DETAIL  
1 1/2" = 1'-0"

## Revision Schedule

Date	Issued by	Number
06/02/2024	TRC	A

DATE: 01/24/2024 DRAWN BY: MGE

APPROVED BY:

PROJECT NAME:  
St. Cloud VA Bldg. 51 L1 East

SHEET DESCRIPTION:  
PROJECT DETAILS

SHEET NO:  
GUL104

VERIFY SIZE AND LOCATION IN FIELD.

SEE 3/GUL102 FOR RAIL SPANS & ADDITIONAL DIMENSIONS



Guldmann Inc.  
14401 McCormick Drive  
Tampa FL 33626 Unit A  
Tel: 813-984-8834  
Fax: 1-813-984-8858  
Email: info@guldmann.net

NOTES

1. HOIST = 770 LBS
2. FLUSHED RECESSED / TYPE - P
3. CEILING HEIGHT = 8' - 0"  
AFF TO DECK = 11' - 11"
4. ATTACHMENT TYPE =  
CONCRETE BEAM  
SPAN = 2' - 0"

KEY

- Hoist Transformer
- Ceiling bracket, Extended
- Stabilizers
- B rail
- Hoist

ACCURATE TO 4" BASED  
ON PDF CONVERSION

Revision Schedule

Date	Issued by	Number
06/02/2024	TRC	A
06/17/2024	MGE	B

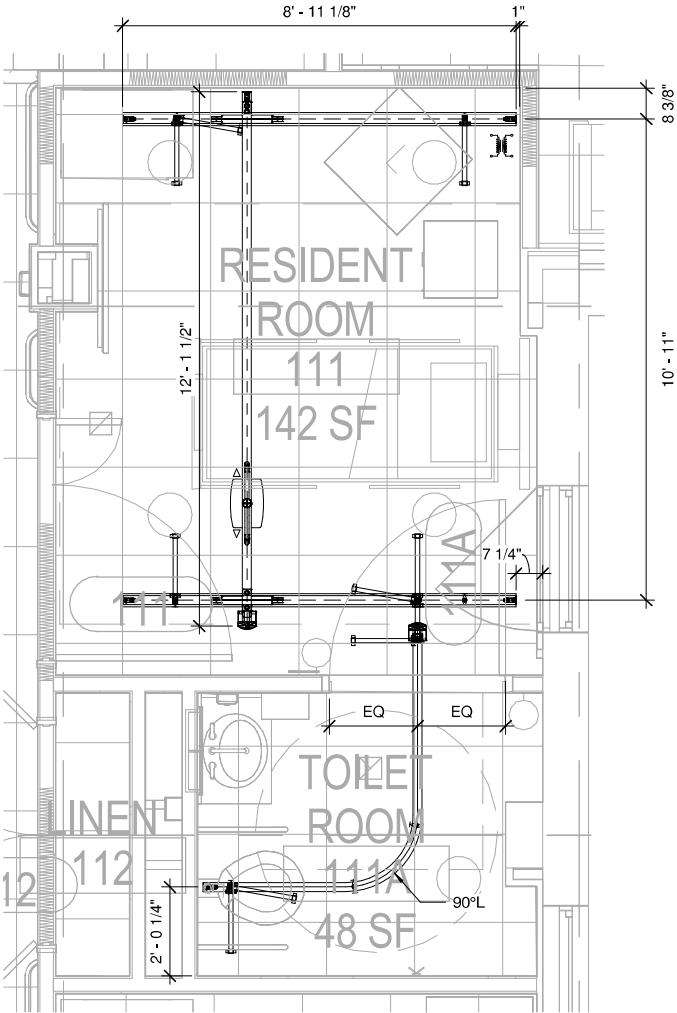
DATE: 01/24/2024 DRAWN BY: MGE

APPROVED BY:

PROJECT NAME:  
St. Cloud VA Bldg. 51 L1 East

SHEET DESCRIPTION:  
RM 111

SHEET NO:  
GUL105



① RM 111  
1/2" = 1'-0"

VERIFY SIZE AND LOCATION IN FIELD.

SEE 3/GUL102 FOR RAIL SPANS & ADDITIONAL DIMENSIONS



Guldmann Inc.  
14401 McCormick Drive  
Tampa, FL 33626 Unit A  
Tel: 813-944-8834  
Fax: 1 (813) 944-3658  
Email: info@Guldmann.net

NOTES

1. HOIST = 770 LBS
2. FLUSHED RECESSED / TYPE - P
3. CEILING HEIGHT = 8' - 0"  
AFF TO DECK = 11' - 11"
4. ATTACHMENT TYPE =  
CONCRETE BEAM  
SPAN = 2' - 0"

KEY

- Hoist Transformer
- Ceiling bracket, Extended
- Stabilizers
- B rail
- Hoist

ACCURATE TO 4" BASED  
ON PDF CONVERSION

Revision Schedule

Date	Issued by	Number
06/02/2024	TRC	A
06/17/2024	MGE	B

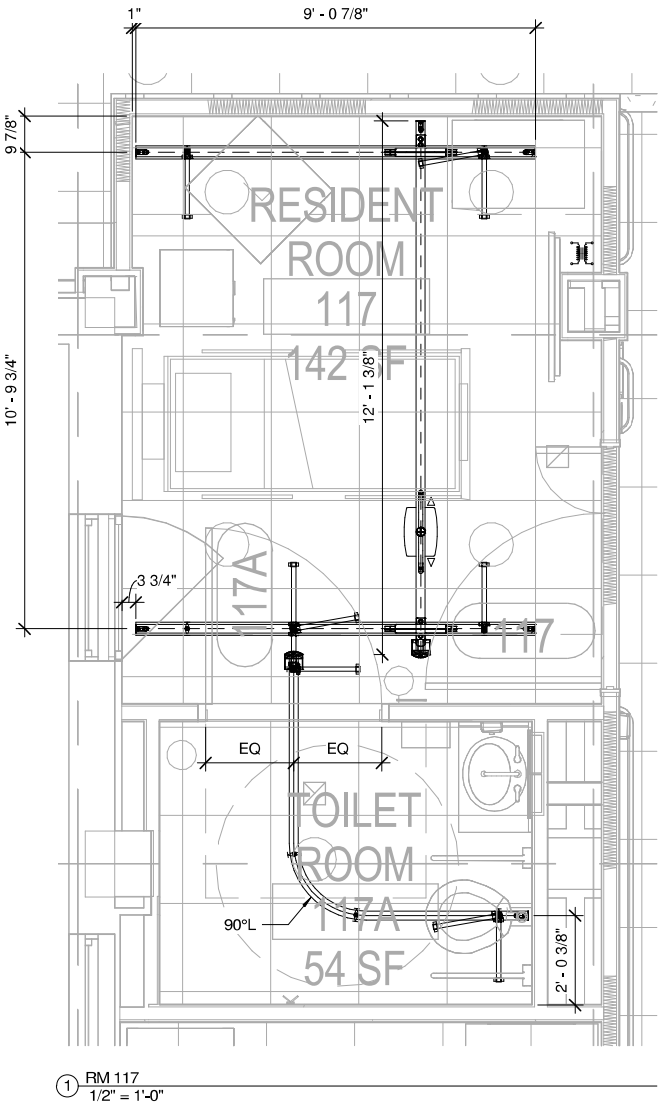
DATE: 01/24/2024 DRAWN BY: MGE

APPROVED BY:

PROJECT NAME:  
St. Cloud VA Bldg. 51 L1 East

SHEET DESCRIPTION:  
RM 117

SHEET NO:  
GUL106



VERIFY SIZE AND LOCATION IN FIELD.

SEE 3/GUL102 FOR RAIL SPANS & ADDITIONAL DIMENSIONS



Guldman Inc.  
14401 McCormick Drive  
Tampa, FL 33626, Unit A  
Tel: 813-984-8834  
Fax: 1(813)-984-8858  
Email: Info@Guldman.net

NOTES

1. HOIST = 770 LBS
2. FLUSHED RECESSED / TYPE - P
3. CEILING HEIGHT = 8' - 0"  
AFF TO DECK = 11' - 11"
4. ATTACHMENT TYPE =  
CONCRETE BEAM  
SPAN = 2' - 0"

KEY

- Hoist Transformer
- Ceiling bracket, Extended
- Stabilizers
- B rail
- Hoist

ACCURATE TO 4" BASED  
ON PDF CONVERSION

Revision Schedule

Date	Issued by	Number
06/02/2024	TRC	A

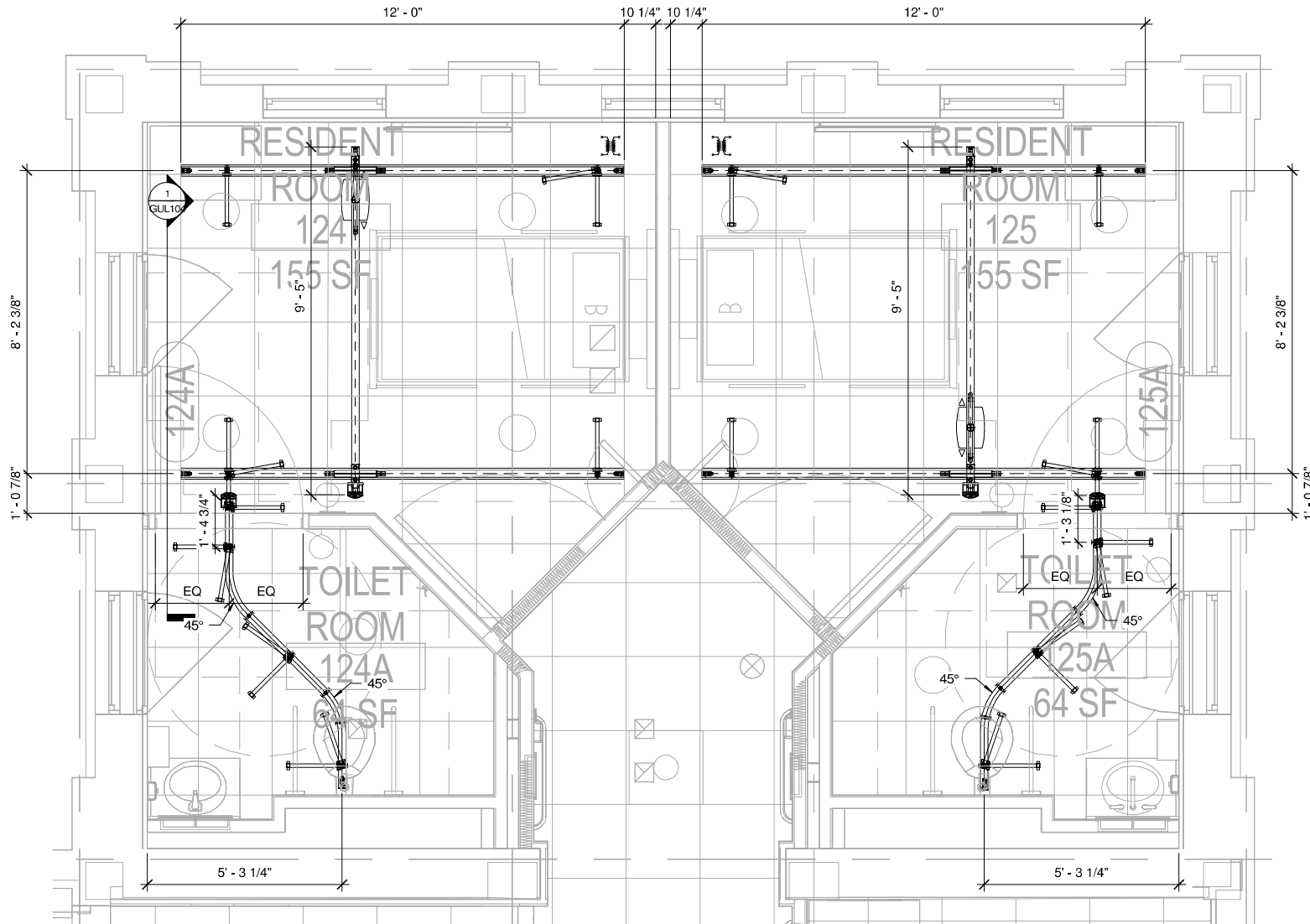
DATE: 01/24/2024 DRAWN BY: MGE

APPROVED BY:

PROJECT NAME:  
St. Cloud VA Bldg. 51 L1 East

SHEET DESCRIPTION:  
RM 124 & 125

SHEET NO:  
GUL107



① RM 124 & 125  
1/2" = 1'-0"

PROJECT ID:103896

VERIFY SIZE AND LOCATION IN FIELD.

SEE 3/GUL102 FOR RAIL SPANS & ADDITIONAL DIMENSIONS



Guldmann Inc.  
14401 McCormick Drive  
Tampa FL 33626 Unit A  
Tel: 813-944-8834  
Fax: 1(813)-944-8858  
Email: Info@Guldmann.net

NOTES

1. HOIST = 770 LBS
2. FLUSHED RECESSED / TYPE - P
3. CEILING HEIGHT =  
AFF TO DECK = UNKNOWN
4. ATTACHMENT TYPE = UNKNOWN  
CONCRETE BEAM  
SPAN = 2' - 0"
5. CURTAIN TO BE SPLIT OR  
WALLMOUNTED SWING AWAY

KEY

- Hoist Transformer
- Ceiling bracket, Extended
- Stabilizers
- B rail
- Hoist

ACCURATE TO 4" BASED  
ON PDF CONVERSION

Revision Schedule

Date	Issued by	Number
06/02/2024	TRC	A
06/17/2024	MGE	B

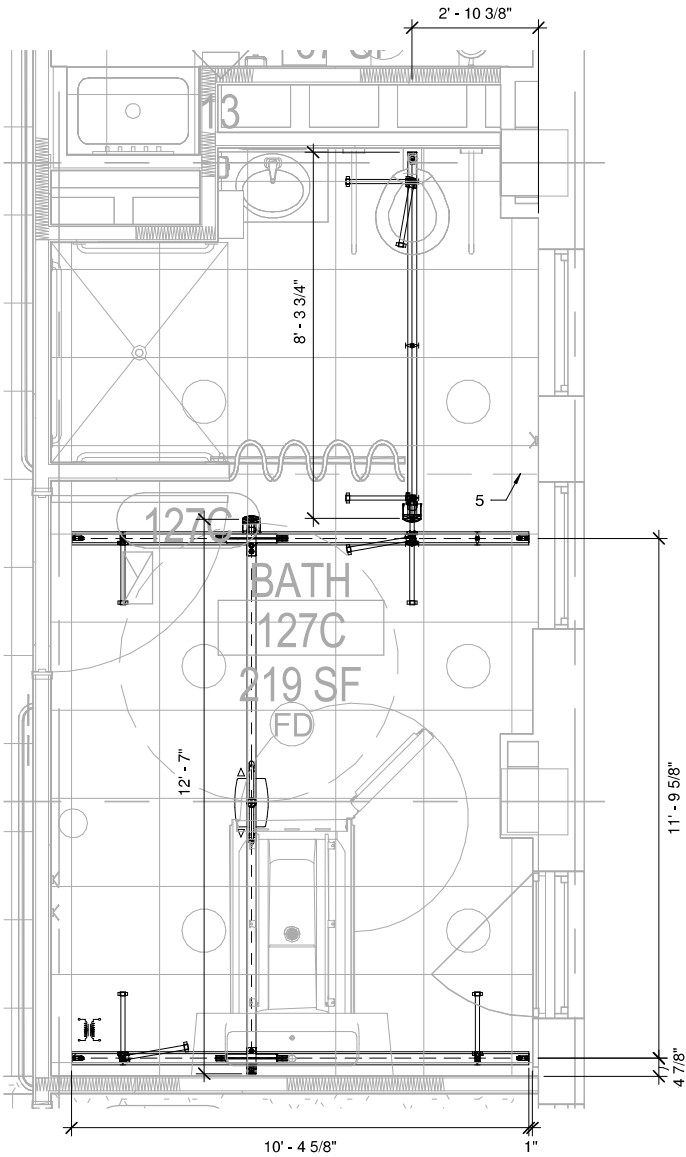
DATE: 01/24/2024 DRAWN BY: MGE

APPROVED BY:

PROJECT NAME:  
St. Cloud VA Bldg. 51 L1 East

SHEET DESCRIPTION:  
RM 127

SHEET NO:  
GUL108



① RM 127  
1/2" = 1'-0"