

<p>ARCHITECT/ENGINEER OF RECORD</p> <p>Calvin L. Hinz Architects, P.C. 3705 North 200th Street Bloomer, WI 54910 Phone: 402.291.6941 Fax: 402.291.9193</p>	<p>IMEG INCORPORATED</p> <p>Incandescence Life Safety, Inc. 2025 Douglas Court, #400, Denver, CO 80210 Phone: (314) 954-2534</p>	<p>STAMP</p> <p>ARCHITECT RICHARD JOSEPH/ONKEN A-6125 STATE OF MISSOURI 24 MAR 2021</p>	<p>Office of Construction and Facilities Management</p> <p>VA U.S. Department of Veterans Affairs</p>	<p>Drawing Title</p> <p>EXISTING CONDITIONS PLAN & EXTERIOR PHOTOS</p> <p>Approved: _____</p>	<p>Phase</p> <p>BID SET</p> <p>FULLY SPRINKLERED</p>	<p>Project Title</p> <p>RENOVATE WAREHOUSE FOR PANDEMIC PREPAREDNESS</p> <p>Location: HARRY S. TRUMAN MEM. VETERANS HOSPITAL 800 HOSPITAL DR., COLUMBIA MO 65201</p>	<p>Project Number</p> <p>589A4-20-158</p> <p>Building Number</p> <p>14</p> <p>Drawing Number</p> <p>RA101 Dwg. # 91 of 94</p>
<p>BID SET 03/24/2021</p> <p>Revisions: Date:</p>						<p>Issue Date Checked Drawn</p> <p>03/24/2021 AHT TJF</p>	

- EXIST PEMB FRAME TO REMOVE (TYP)
- EXIST GWBMTL STUD WALL INFILL BETWEEN PURLINS TO REMOVE (TYP)
- EXIST PURLINS TO REMOVE (TYP)
- EXIST VINYL SCRM-FACED INSULATION TO REMOVE (TYP)
- EXIST DUCTWORK TO REMOVE (TYP) - SEE MECH
- EXIST GWBMTL STUD WALL TO REMOVE (TYP)
- EXIST WIRE CAGE ENCLOSURE TO BE DISASSEMBLED, STORED AND REASSEMBLED BY CONTR. SEE ELECT/TECH FOR ACCESS CONTROLS
- EXIST ALARM AND ACCESS CONTROL BOXES (TYP) - SEE ELECT/TECH
- EXIST HM DOORFRAME TO REMOVE



A RM. W03A SE CORNER
NOT TO SCALE

- EXIST FIRE SPRINKLER PIPING TO REMOVE - SEE FIRE SUPPRESSION
- EXIST PEMB FRAME TO REMOVE
- PORTION OF EXIST CMU TO REMOVE FOR NEW UPPER EXTERIOR WALL - SEE EXTERIOR ELEV
- EXIST VINYL SCRM-FACED INSULATION TO REMOVE (TYP)
- EXIST PURLINS TO REMOVE (TYP)
- EXIST FANGUARD TO REMOVE (TYP) - INFILL W/ CMU - SEE MECH
- EXIST LIGHT FIXTURES TO REMOVE (TYP) - SEE ELECT
- EXIST PEMB FRAME TO REMOVE (TYP)



B RM. W03A WEST WALL
NOT TO SCALE

- EXIST PURLINS TO REMOVE (TYP)
- EXIST VINYL SCRM-FACED INSULATION TO REMOVE (TYP)
- EXIST LIGHT FIXTURES TO REMOVE (TYP) - SEE ELECT
- EXIST PEMB FRAME TO REMOVE
- PORTION OF EXIST CMU TO REMOVE FOR NEW UPPER EXTERIOR WALL - SEE EXTERIOR ELEV
- EXIST FANGUARD TO REMOVE (TYP) - INFILL W/ CMU - SEE MECH
- EXIST PEMB FRAME TO REMOVE (TYP)
- EXIST HM DOORFRAME (BEYOND) TO REMOVE - INFILL W/ CMU
- EXIST PALLET RACKS (TYP) - CONTR TO COORDINATE W/ VA FOR REMOVAL/REINSTALLATION BY VA DURING DEMOLITION / CONSTRUCTION
- EXIST FIXED AND MOVEABLE EQUIPMENT TO BE REMOVED BY VA PRIOR TO DEMO (TYP)



C RM. W03A SW CORNER
NOT TO SCALE

- EXIST PURLINS TO REMOVE (TYP)
- EXIST VINYL SCRM-FACED INSULATION TO REMOVE (TYP)
- EXIST PEMB FRAME TO REMOVE (TYP)
- EXIST UNIT HEATER TO REMOVE (TYP) - SEE MECH
- EXIST FIXED AND MOVEABLE EQUIPMENT TO BE REMOVED BY VA PRIOR TO DEMO (TYP)
- EXIST HVAC EQUIPMENT/DUCTWORK TO REMOVE (TYP) - SEE MECH



D RM. W03A NW CORNER
NOT TO SCALE

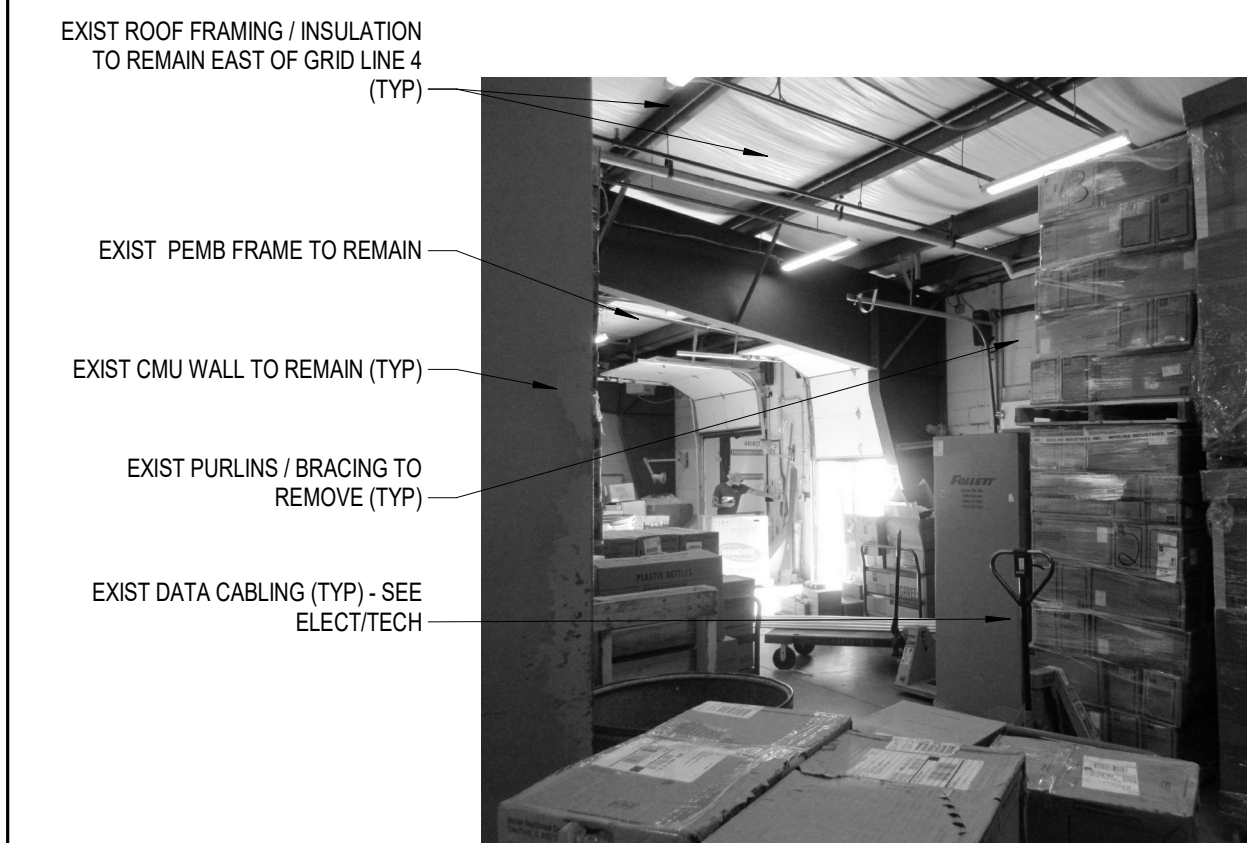
- EXIST PEMB FRAME TO REMOVE
- PORTION OF EXIST CMU TO REMOVE FOR NEW UPPER EXTERIOR WALL - SEE EXTERIOR ELEV
- EXIST VINYL SCRM-FACED INSULATION TO REMOVE (TYP)
- EXIST PURLINS TO REMOVE (TYP)
- EXIST 4" CMU TO REMOVE (TYP)
- EXIST PEMB FRAME TO REMOVE (TYP)
- EXIST PALLET RACKS (TYP) - CONTR TO COORDINATE W/ VA FOR REMOVAL/REINSTALLATION BY VA DURING DEMOLITION / CONSTRUCTION



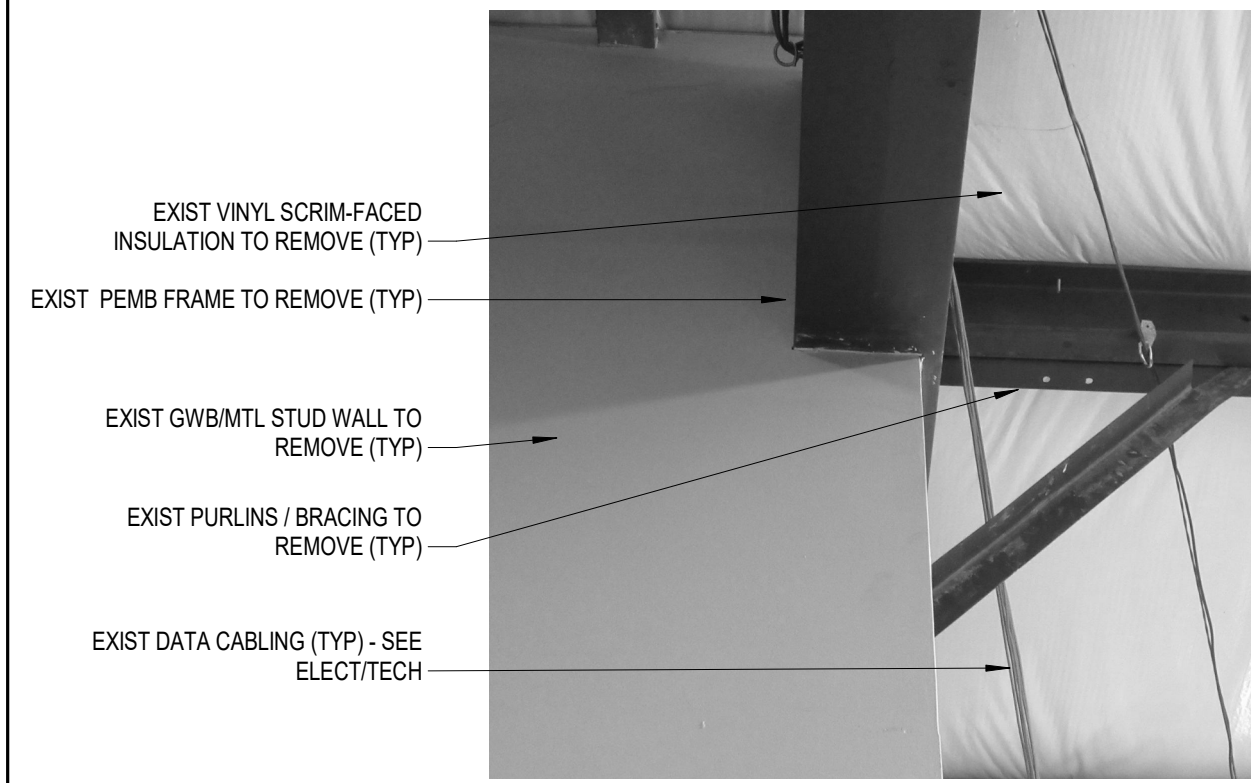
E RM. W03 NORTH WALL / BEAM
NOT TO SCALE



O RM. W02 EAST WALL
NOT TO SCALE



N RM. W02 RECEIVING DOCK
NOT TO SCALE



M RM. W03A-W03B CORNER @ BEAM
NOT TO SCALE

- EXIST PEMB FRAME TO REMOVE (TYP)
- EXIST LIGHT FIXTURES TO REMOVE (TYP) - SEE ELECT
- EXIST UNIT HEATER TO REMOVE (TYP) - SEE MECH
- EXIST FIRE ALARM PULLSTROBE/NOHM (TYP) - SEE FIRE ALARM PLAN / SPECIFICATIONS
- EXIST EXTERIOR DOOR TO REMAIN - SEE HW FOR NEW DOOR HARDWARE
- EXIST SHELVING (TYP) - CONTR TO COORDINATE W/ VA FOR REMOVAL/REINSTALLATION BY VA DURING DEMOLITION / CONSTRUCTION



L RM. W03B SOUTH WEST CORNER
NOT TO SCALE

- EXIST PURLINS / BRACING TO REMOVE (TYP)
- EXIST PEMB FRAME TO REMOVE (TYP)
- EXIST GWBMTL STUD WALL TO REMOVE (TYP)
- EXIST VINYL SCRM-FACED INSULATION TO REMOVE (TYP)
- EXIST FIRE SPRINKLER PIPING TO REMOVE - SEE FIRE SUPPRESSION
- EXIST LIGHT FIXTURES TO REMOVE (TYP) - SEE ELECT
- EXIST PALLET RACKS (TYP) - CONTR TO COORDINATE W/ VA FOR REMOVAL/REINSTALLATION BY VA DURING DEMOLITION / CONSTRUCTION
- EXIST FIXED AND MOVEABLE EQUIPMENT TO BE REMOVED BY VA PRIOR TO DEMO (TYP)



K RM. W03-W03A-W03B CORNER
NOT TO SCALE

- EXIST PALLET RACKS (TYP) - CONTR TO COORDINATE W/ VA FOR REMOVAL/REINSTALLATION BY VA DURING DEMOLITION / CONSTRUCTION
- EXIST GWBMTL STUD WALL TO REMOVE (TYP)
- EXIST ACCESS CONTROL DOOR TO REMOVE - SEE ARCH/ELECT/TECH
- EXIST ACCESS CONTROL & SECURITY EQUIPMENT (TYP) - SEE ELECT/TECH
- EXIST FIXED AND MOVEABLE EQUIPMENT TO BE REMOVED BY VA PRIOR TO DEMO (TYP)



J RM. W03B LOOKING NORTHWEST
NOT TO SCALE

- EXIST PURLINS / BRACING TO REMOVE (TYP)
- EXIST VINYL SCRM-FACED INSULATION TO REMOVE (TYP)
- EXIST LIGHT FIXTURES TO REMOVE (TYP) - SEE ELECT
- EXIST CMU WALL TO REMAIN - MODIFY AS REQ'D. FOR NEW UPPER WALL INSTALLATION
- EXIST FIRE SPRINKLER PIPING TO REMOVE - SEE FIRE SUPPRESSION
- EXIST PALLET RACKS (TYP) - CONTR TO COORDINATE W/ VA FOR REMOVAL/REINSTALLATION BY VA DURING DEMOLITION / CONSTRUCTION
- EXIST FIXED AND MOVEABLE EQUIPMENT TO BE REMOVED BY VA PRIOR TO DEMO (TYP)
- EXIST CONC FLOOR (TYP) - SEE STRUCT/ARCH/FINISH PLANS FOR DEMO/REPAIR/REFINISHING



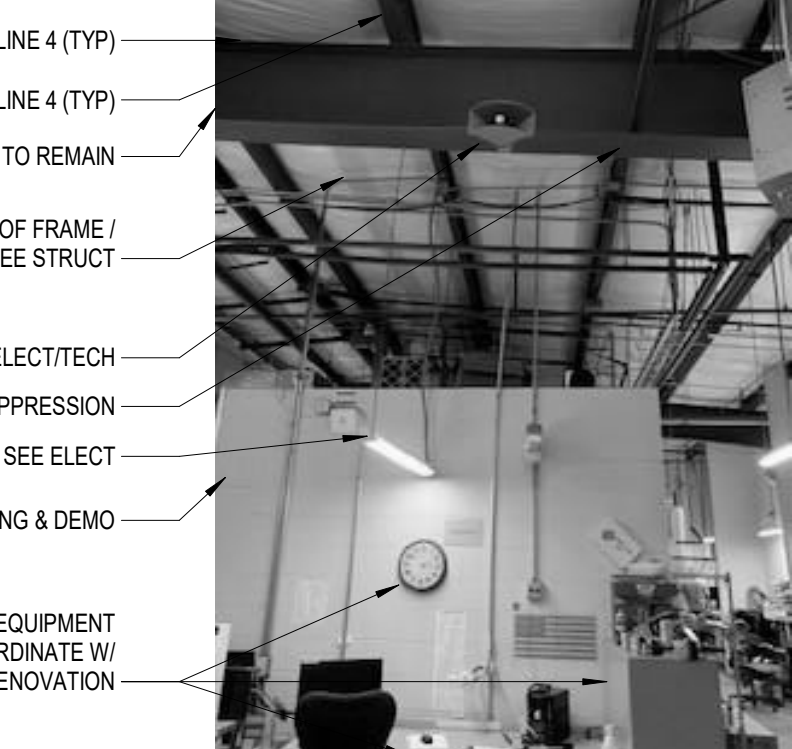
I RM. W03 LOOKING NORTH
NOT TO SCALE

- EXIST VINYL SCRM-FACED INSULATION TO REMOVE WEST OF GRID LINE 4 (TYP)
- EXIST PURLINS / BRACING TO REMOVE WEST OF GRID LINE 4 (TYP)
- EXIST FIRE SPRINKLER PIPING TO REMOVE - SEE FIRE SUPPRESSION
- EXIST LIGHT FIXTURES TO REMOVE (TYP) - SEE ELECT
- EXIST SPEAKER (TYP) - SEE ELECT/TECH
- EXIST PALLET RACKS (TYP) - CONTR TO COORDINATE W/ VA FOR REMOVAL/REINSTALLATION BY VA DURING DEMOLITION / CONSTRUCTION



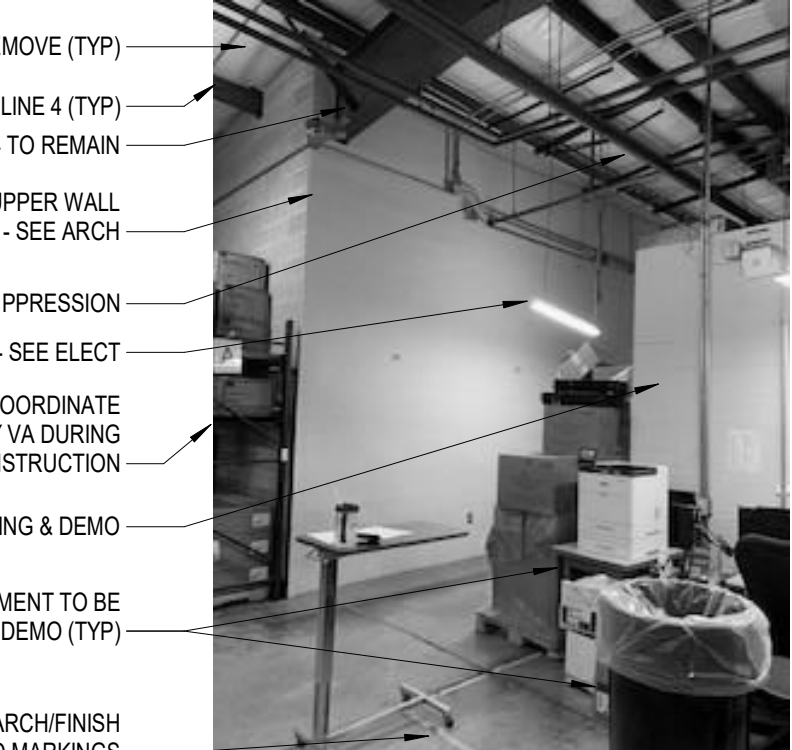
F RM. W03 CEILING LOOKING WEST
NOT TO SCALE

- EXIST VINYL SCRM-FACED INSULATION TO REMOVE WEST OF GRID LINE 4 (TYP)
- EXIST PURLINS / BRACING TO REMOVE WEST OF FRAME/GRID LINE 4 (TYP)
- EXIST PEMB FRAME-GRID LINE 4 TO REMAIN
- NEW PURLINS / BRACING TO BE INSERTED IN BAY EAST OF FRAME / GRID LINE 4-5 (TYP) - SEE STRUCT
- EXIST LOUD SPEAKER (TYP) - SEE ELECT/TECH
- EXIST FIRE SPRINKLER PIPING TO REMOVE - SEE FIRE SUPPRESSION
- EXIST LIGHT FIXTURES TO REMOVE (TYP) - SEE ELECT
- EXIST CMU WALL & CONC DECK TO REMOVE - SEE PHASING & DEMO
- EXIST FURNITURE, SHELVING, FIXED AND MOVEABLE EQUIPMENT TO BE REMOVED BY VA PRIOR TO DEMO (TYP) - COORDINATE W/ COR FOR STORAGE AND REUSE IN RENOVATION

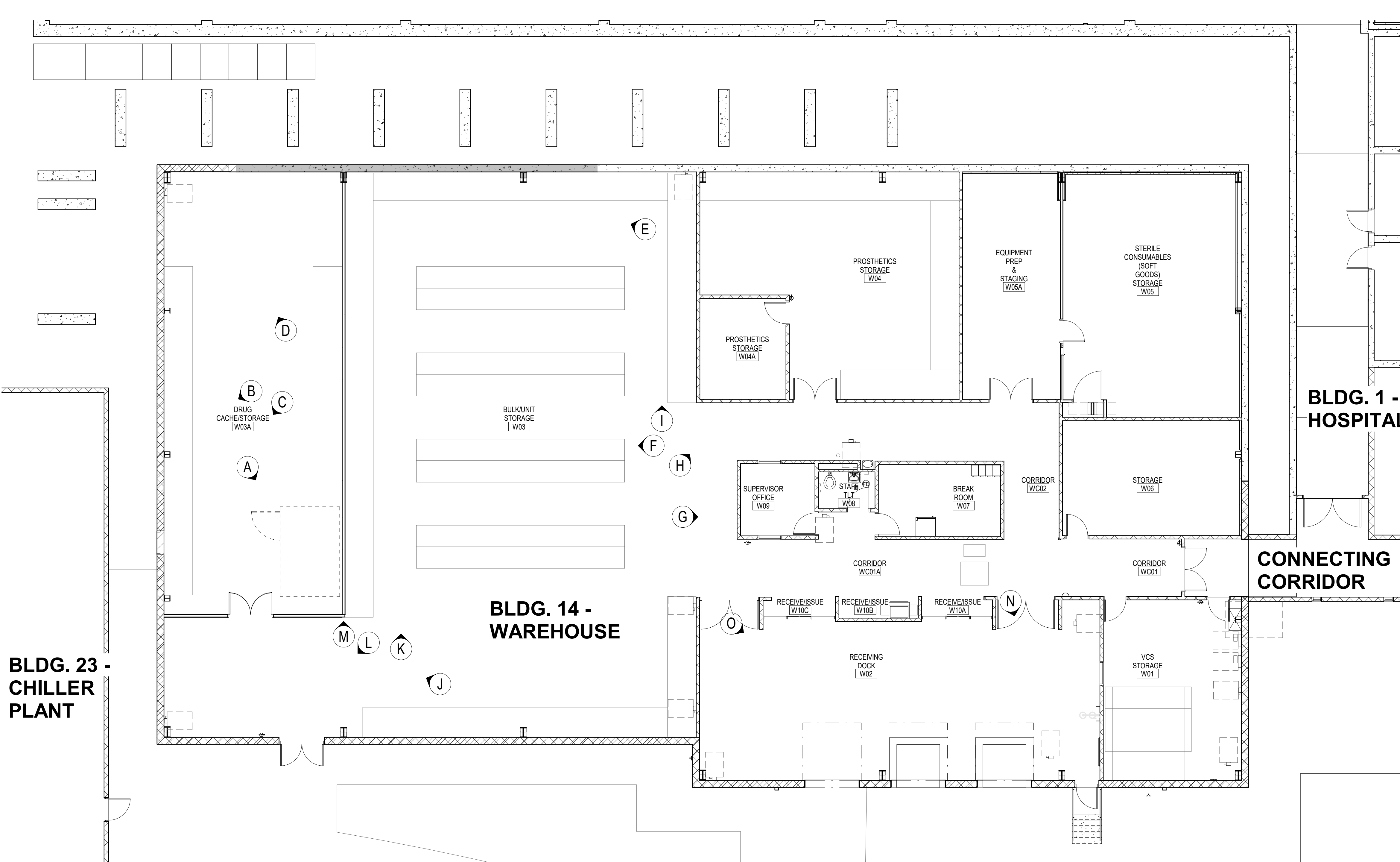


G RM. W03 LOOKING EAST
NOT TO SCALE

- EXIST VINYL SCRM-FACED INSULATION TO REMOVE (TYP)
- EXIST PURLINS / BRACING TO REMOVE WEST OF GRID LINE 4 (TYP)
- EXIST PEMB FRAME-GRID LINE 4 TO REMAIN
- EXIST CMU WALL TO REMAIN - MODIFY AS REQ'D. FOR NEW UPPER WALL INSTALLATION AND DOORS - SEE ARCH
- EXIST FIRE SPRINKLER PIPING TO REMOVE - SEE FIRE SUPPRESSION
- EXIST LIGHT FIXTURES TO REMOVE (TYP) - SEE ELECT
- EXIST PALLET RACKS (TYP) - CONTR TO COORDINATE W/ VA FOR REMOVAL/REINSTALLATION BY VA DURING DEMOLITION / CONSTRUCTION
- EXIST CMU WALL & CONC DECK TO REMOVE - SEE PHASING & DEMO
- EXIST FIXED AND MOVEABLE EQUIPMENT TO BE REMOVED BY VA PRIOR TO DEMO (TYP)
- EXIST CONC FLOOR (TYP) - SEE STRUCT/ARCH/FINISH PLANS FOR DEMO/REPAIR/REFINISHING AND MARKINGS



H RM. W03 LOOKING NORTH EAST
NOT TO SCALE



1 EXISTING CONDITION FLOOR PLAN
1/8" = 1'-0"

3/24/2021 8:41:56 AM I:\CL\CD\1\Home\resman\Rev\ Models\19-2020-21_589A\20-158_Renovate_Warehouse_Revman\CD\2\1.rvt

BID SET	03/24/2021
Revisions:	Date:

ARCHITECT/ENGINEER OF RECORD

Calvin L. Hinz Architects, P.C.
3705 North 200th Street
Bldg 100, Webster, MO 64092
Phone: 402.291.6941 Fax: 402.291.9193

IMEG IMEG Corp.
15 Sumner Drive, Suite 104
St. Louis, MO 63143
Phone: (314) 954-2534

incandescence life safety
a fire protection engineering firm

STAMP

ARCHITECT
RICHARD JOSEPH/OKEN
A-6125
STATE OF MISSOURI
24 MAR 2021

Office of Construction and Facilities Management

VA U.S. Department of Veterans Affairs

Drawing Title
EXISTING CONDITIONS PLAN & INT. PHOTOS - WEST WAREHOUSE

Approved:

Phase
BID SET

FULLY SPRINKLERED

Project Title RENOVATE WAREHOUSE FOR PANDEMIC PREPAREDNESS		Project Number 589A4-20-158
Location HARRY S. TRUMAN MEM. VETERANS HOSPITAL 800 HOSPITAL DR., COLUMBIA MO 65201		Building Number 14
Issue Date 03/24/2021	Checked AHT	Drawn TJF
Drawing Number RA102		Dwg. # 92 of 94