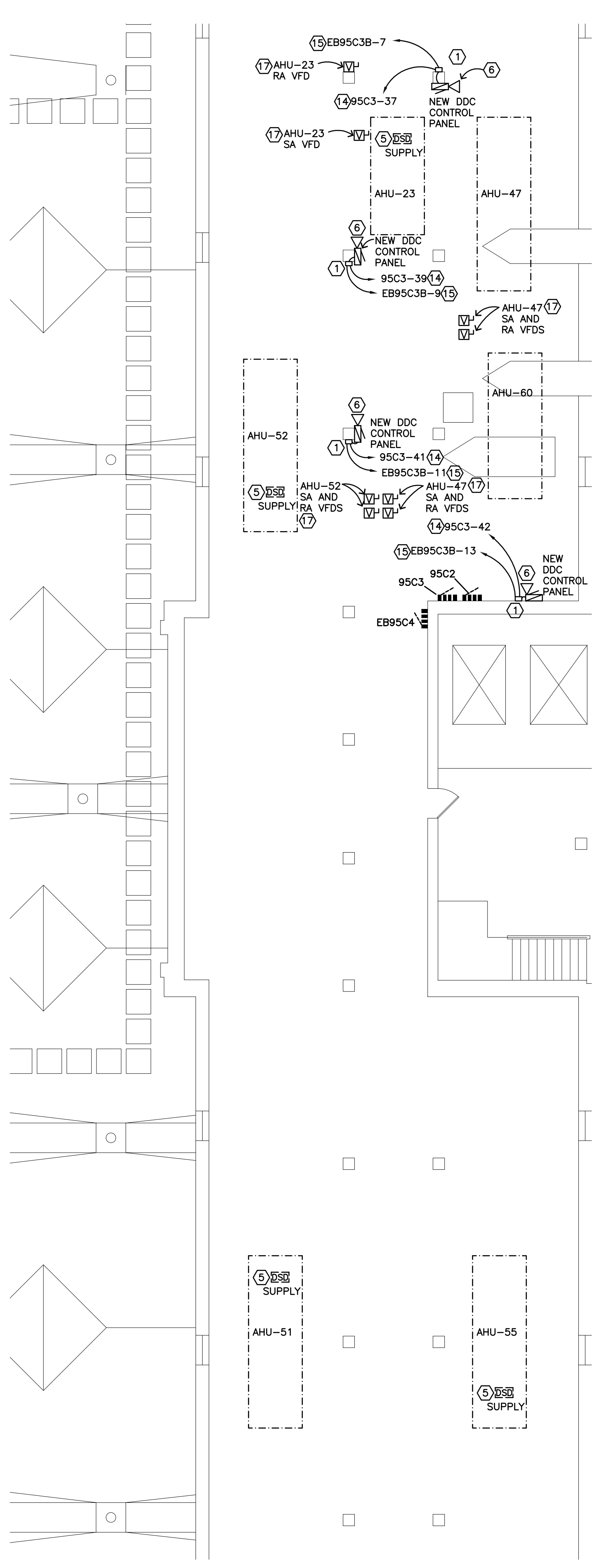


PLAN NOTES:

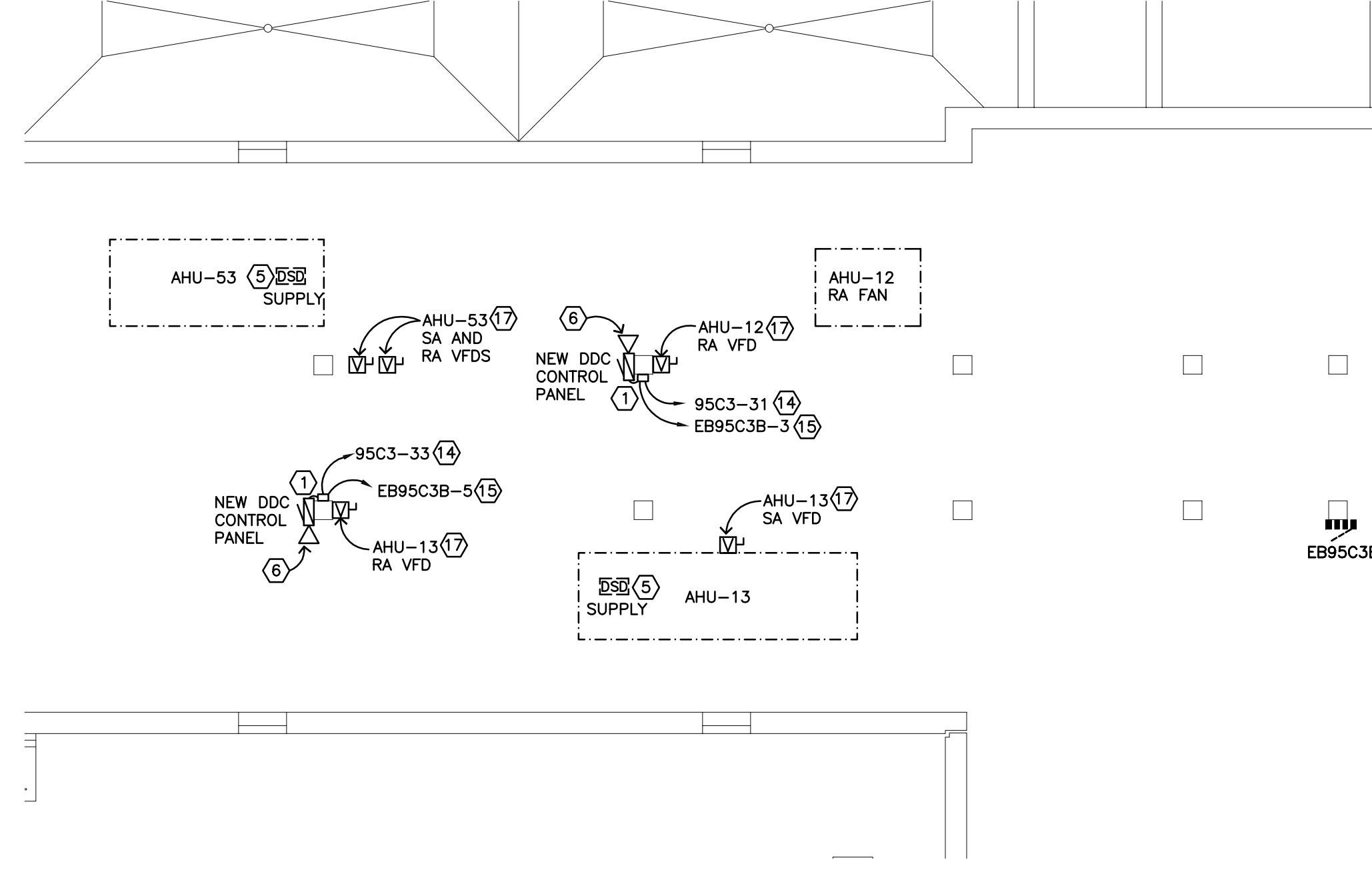
- PROVIDE MANUAL TRANSFER SWITCH WITH NORMAL AND EMERGENCY 120V CONNECTIONS TO DDC CONTROL PANEL. COORDINATE EXACT LOCATION OF DDC PANEL WITH MECHANICAL CONTRACTOR PRIOR TO ROUGH IN. SEE DETAIL 4/EB.1.
- EACH DACU UNIT WILL BE REMOVED AND REPLACED SEQUENTIALLY IN THE UPS AND SERVER ROOM TO MAINTAIN CONTINUOUS COOLING. COORDINATE PHASING OF THIS WORK WITH MECHANICAL CONTRACTOR.
- REMOVE EXISTING CONNECTIONS TO AHU AT THIS LOCATION.
- REMOVE EXISTING CONNECTIONS TO AC UNIT TO ITS SOURCE. PATCH EXISTING ROOF PENETRATIONS AS REQUIRED.
- DISCONNECT EXISTING DUCT SMOKE DETECTOR FOR INSTALLATION OF NEW SUPPLY DUCT BY MECHANICAL CONTRACTOR. SALVAGE DETECTOR AND REINSTALL IN NEW DUCT. EXTEND EXISTING WIRE AND CONDUIT AS REQUIRED.
- PROVIDE DATA CONNECTION TO DDC PANEL. ROUTE CABLEING IN 3/4" C. TO NEAREST DATA CABINET AND TERMINATE.
- REPLACE EXISTING PANEL EB465C3 AND REFEED AT 200A WITH (3) 3/0+866 IN EXISTING 2" CONDUIT TO PANEL. EBE IN BASEMENT. CONNECT TO EXISTING 200A BREAKER IN EBE. RECONNECT EXISTING LOADS AND EXTEND EXISTING WIRING AND CONDUIT AS REQUIRED. SEE PANEL SCHEDULE AND ELECTRICAL ONE LINE DIAGRAM.
- REMOVE EXISTING DUCT DETECTORS AND PROVIDE NEW DUCT SMOKE DETECTOR WITH FAN SHUTDOWN RELAY IN SUPPLY AND RETURN DUCT. FIELD COORDINATE EXACT MOUNTING LOCATION WITH MECHANICAL CONTRACTOR. EXTEND EXISTING FIRE ALARM WIRING AS REQUIRED FOR NEW DUCT DETECTOR INSTALLATION.
- REPLACE EXISTING 3 POLE MANUAL TRANSFER SWITCH WITH NEW 4 POLE MANUAL TRANSFER SWITCH. RECONNECT EXISTING 250A NORMAL FEED, EXISTING 250A EMERGENCY FEED, AND EXISTING 250A PANEL FEEDER TO EBB0N3. EXTEND EXISTING WIRING AND CONDUIT AS REQUIRED.
- EXISTING DACU FED FROM PANEL EB46TEL#2. REMOVE EXISTING WIRE AND CONDUIT.
- EXISTING DACU UNIT FED FROM PANEL EB10C4P. REMOVE EXISTING WIRE AND CONDUIT.
- EXISTING CONDENSING UNIT TO BE RELOCATED. INTERCEPT AND EXTEND EXISTING WIRING AND CONDUIT TO NEW LOCATION.
- ALL WORK ASSOCIATED WITH REMOVAL OF EXISTING AHU #4 AND INSTALLATION OF NEW AHU #4 SHALL BE DELETED UNDER DEDUCT ALTERNATE.
- ADD 20A/1P BREAKER TO EXISTING PANEL AS INDICATED FOR DDC POWER CIRCUIT.
- CONNECT TO EXISTING SPARE 20A/1P BREAKER AS INDICATED FOR DDC EQUIPMENT BRANCH CIRCUIT.
- REPLACE EXISTING PANEL EB465C3 AND REFEED AT 200A WITH (3) 3/0+866 IN EXISTING 2" CONDUIT TO PANEL. EBE IN BASEMENT. CONNECT TO EXISTING 200A BREAKER IN EBE. RECONNECT EXISTING LOADS AND EXTEND EXISTING WIRING AND CONDUIT AS REQUIRED. SEE PANEL SCHEDULE AND ELECTRICAL ONE LINE DIAGRAM.
- DISCONNECT EXISTING VFD AND INSTALL/RECONNECT NEW VFD IN SAME LOCATION FOR AHU INDICATED.
- RELOCATE EXISTING LIGHT EQUIPMENT ONE TILE SPACE TO ACCOMMODATE NEW DACU UNIT. EXTEND EXISTING WIRING AND CONDUIT AS REQUIRED.
- RELOCATED DACU-7 CONDENSING UNIT.
- REMOVE AND REINSTALL EXISTING LIGHTS, SPEAKERS, ACCESS POINTS, ETC FOR REMOVAL OF CEILING GRID AND INSTALLATION OF HVAC EQUIPMENT IN THIS AREA.
- EXTEND EXISTING SUPPLY FAN WIRING AND CONDUIT AS REQUIRED FOR TEMPORARY FAN CONNECTION DURING CONSTRUCTION. COORDINATE WITH MECHANICAL CONTRACTOR FOR EXACT PLACEMENT. REMOVE CONNECTION IN ITS ENTIRETY AFTER NEW UNIT IS INSTALLED.
- PROVIDE NEW 400A PANEL. SEE ONE LINE DIAGRAM AND PANEL SCHEDULES FOR ADDITIONAL INFORMATION.
- IF THE DEDUCT ALTERNATE TO OMIT REPLACEMENT OF AHU-4 IS TAKEN, THEN THE EXISTING SUPPLY FAN AND ASSOCIATED VFD IN AHU-4 WILL BE REPLACED. REMOVE THE EXISTING SUPPLY FAN CONNECTIONS AND PROVIDE NEW CONNECTIONS VIA NEW VFD. SEE MOTOR AND EQUIPMENT SCHEDULE FOR SUPPLY FAN SF-4A REQUIREMENTS.
- REMOVE AND REINSTALL EXISTING LIGHT FIXTURES, SPEAKERS, ETC TO ACCOMMODATE INSTALLATION OF NEW PIPING AND DUCTWORK IN THIS AREA. COORDINATE WITH MECHANICAL CONTRACTOR.
- RELOCATE EXISTING FIRE ALARM DEVICE APPROXIMATELY 3 FEET TO ACCOMMODATE NEW DACU UNIT.

GENERAL NOTES:

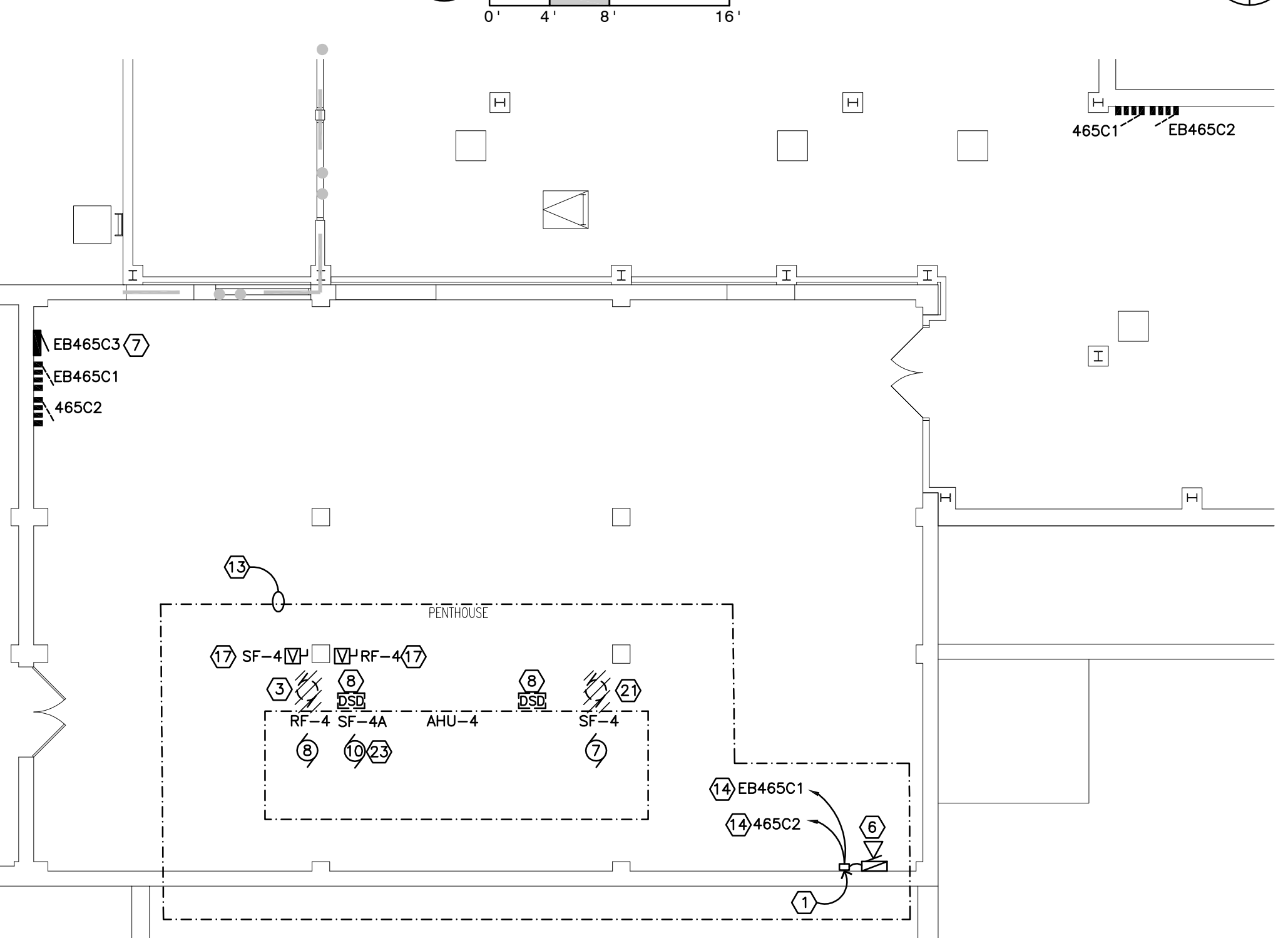
- PHASING OF DEMOLITION OF EXISTING EQUIPMENT AND INSTALLATION OF NEW EQUIPMENT SHALL BE CLOSELY COORDINATED WITH THE OWNER AND THE MECHANICAL CONTRACTOR PRIOR TO BEGINNING WORK. SHUTDOWN OF EXISTING MECHANICAL EQUIPMENT AND SWITCHOVER TO NEW EQUIPMENT WORK WILL OCCUR AFTER REGULAR OPERATING HOURS AND ON WEEKENDS.
- TEMPORARY FAN CONNECTIONS FOR AIR HANDLING UNITS WILL BE REQUIRED AS NOTED ON THE DRAWINGS. THE ELECTRICAL CONTRACTOR SHALL EXTEND EXISTING CIRCUITING OR PROVIDE NEW AS NECESSARY FOR TEMPORARY POWER. THEN REMOVE THE CONNECTION IN ITS ENTIRETY UPON INSTALLATION OF THE NEW EQUIPMENT.
- DEVICES SHOWN WITH HATCHING ON THIS PLAN SHALL BE DEMOLISHED AND WIRING REMOVED TO THEIR SOURCE UNLESS NOTED OTHERWISE. THIS INCLUDES ALL EXISTING WIRING, CONDUIT, STARTERS, DISCONNECTS, VFDs ETC.
- THE ELECTRICAL CONTRACTOR SHALL BE REQUIRED TO REMOVE AND REINSTALL EXISTING LIGHT FIXTURES, WIRELESS ACCESS POINTS, SPEAKERS, FIRE ALARM DEVICES, RTLS EQUIPMENT ETC WHERE CEILINGS ARE BEING REMOVED AND REINSTALLED TO ACCOMMODATE INSTALLATION OF NEW MECHANICAL AND ELECTRICAL PIPING, DUCTWORK, CONDUIT ETC. AREAS OF CEILING REMOVAL SHOWN ON THE DRAWINGS ARE BASED ON PLANNED ROUTING. ACTUAL ROUTING WILL BE COORDINATED WITH EXISTING FIELD CONDITIONS.
- PROVIDE TEMPORARY SUPPORT ANY WIRING SYSTEMS DISTURBED BY REMOVAL OF EXISTING CEILINGS.



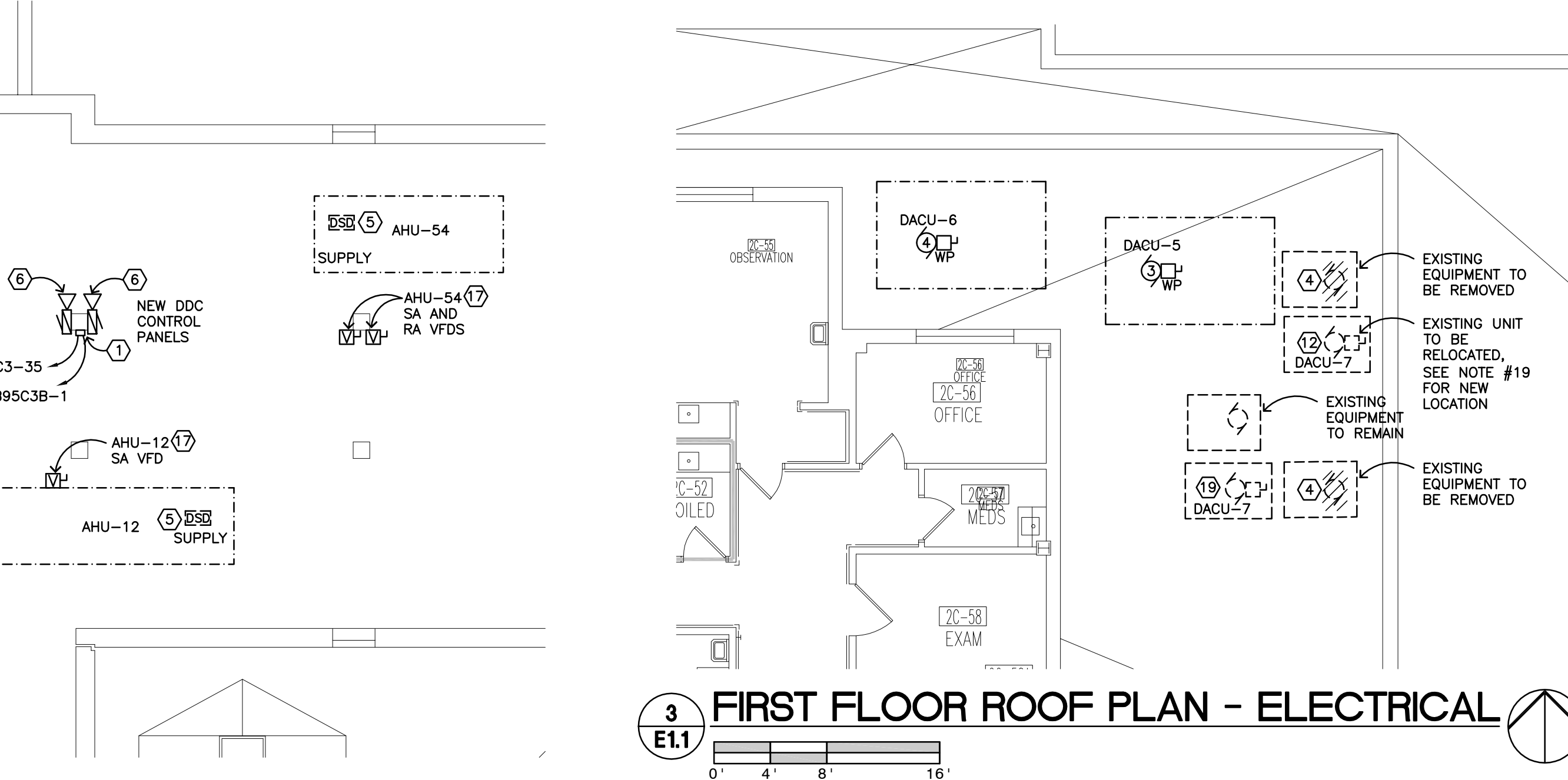
1 ATTIC FLOOR PLAN - ELECTRICAL
E11



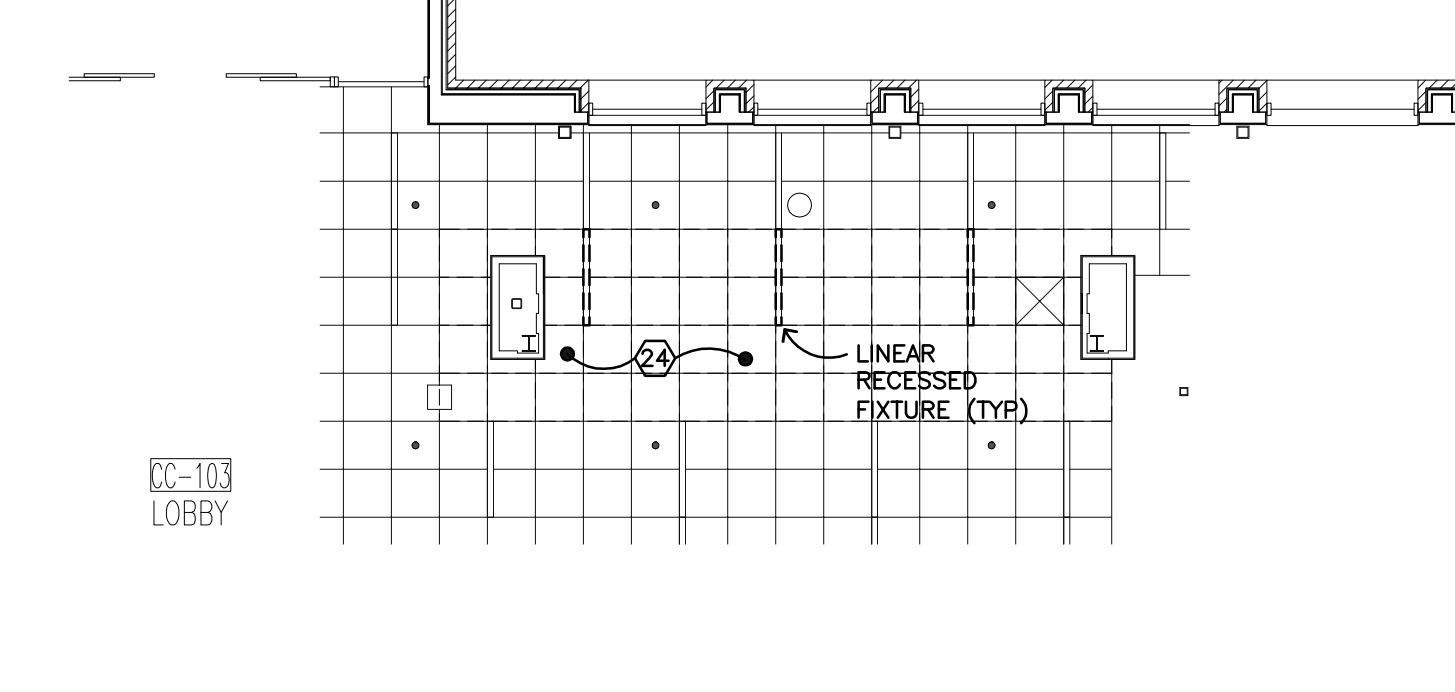
2 ATTIC FLOOR PLAN - ELECTRICAL
E11



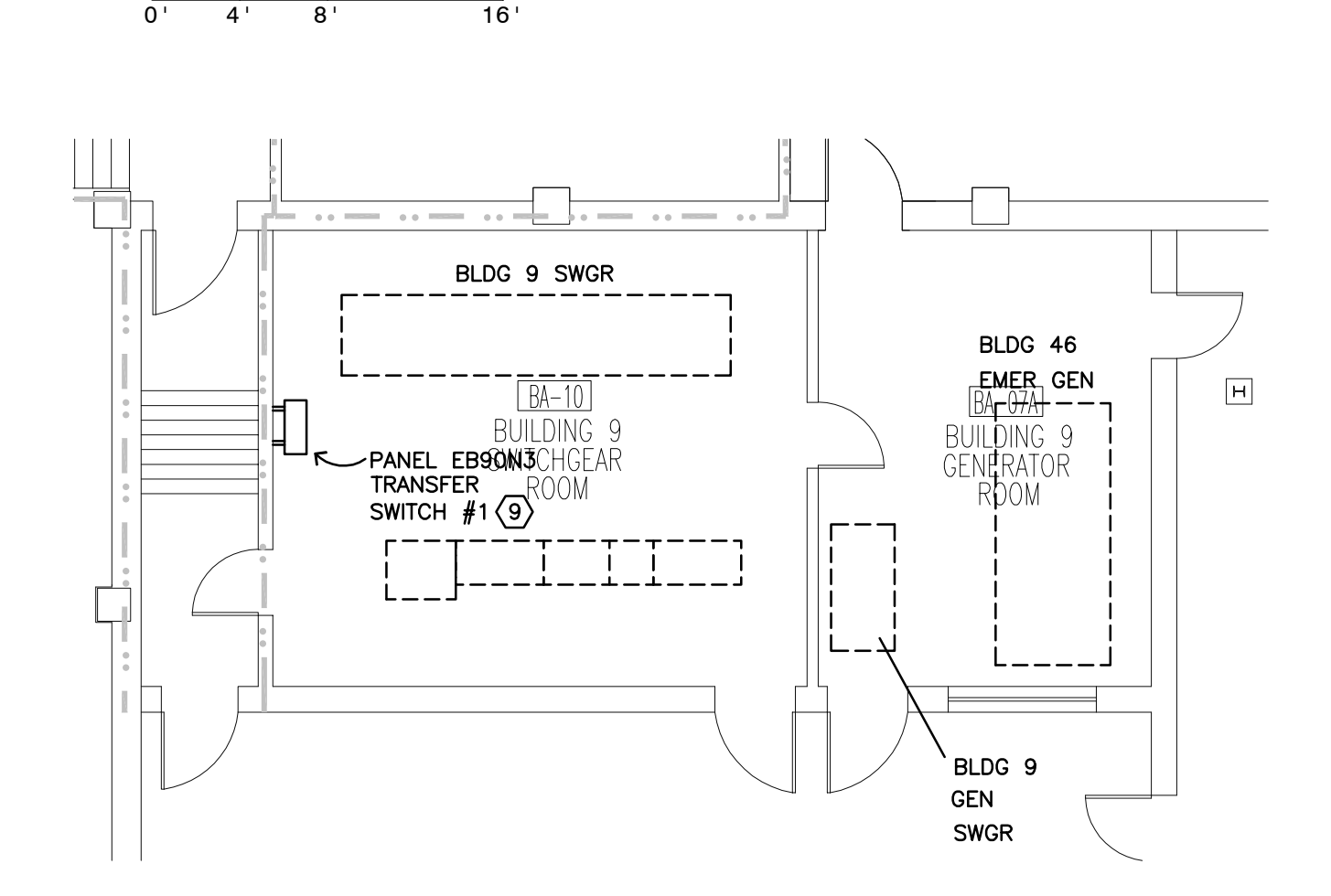
4 ATTIC FLOOR PLAN - ELECTRICAL
E11



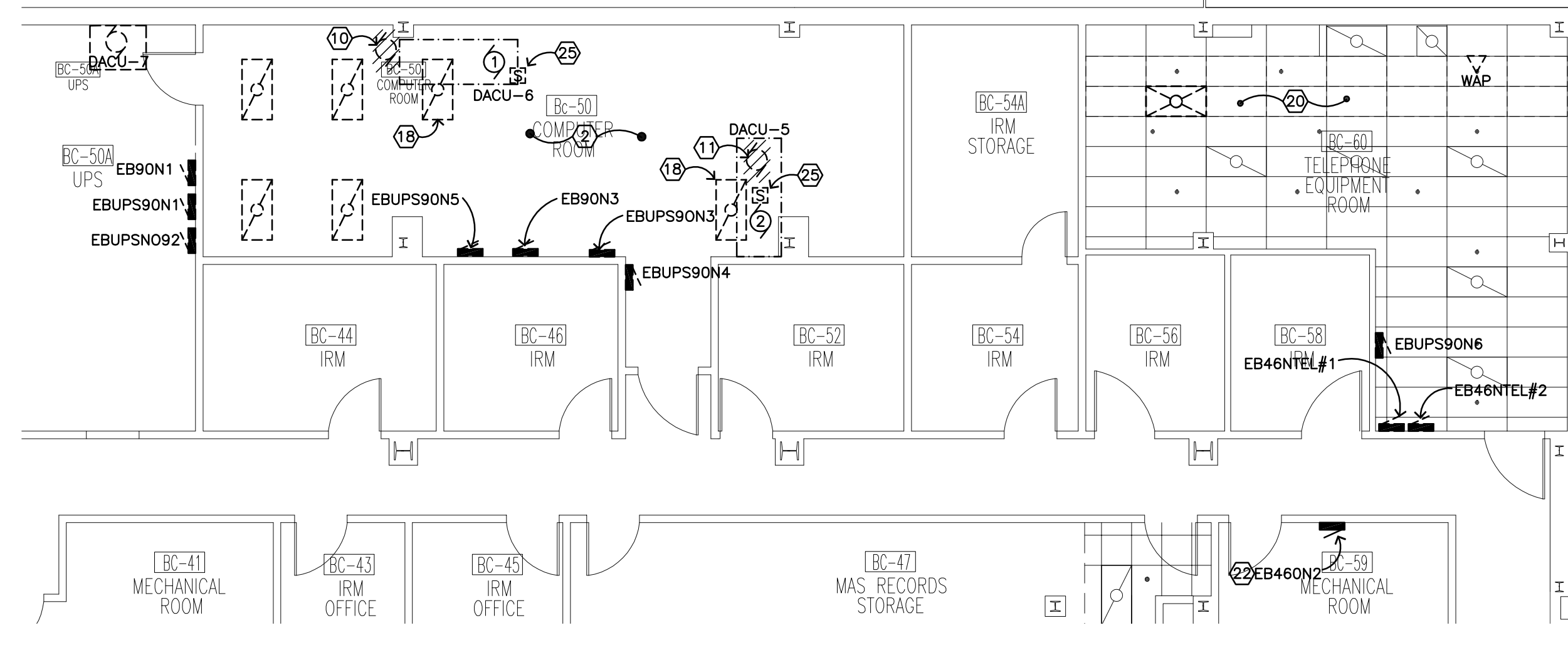
3 FIRST FLOOR ROOF PLAN - ELECTRICAL
E11



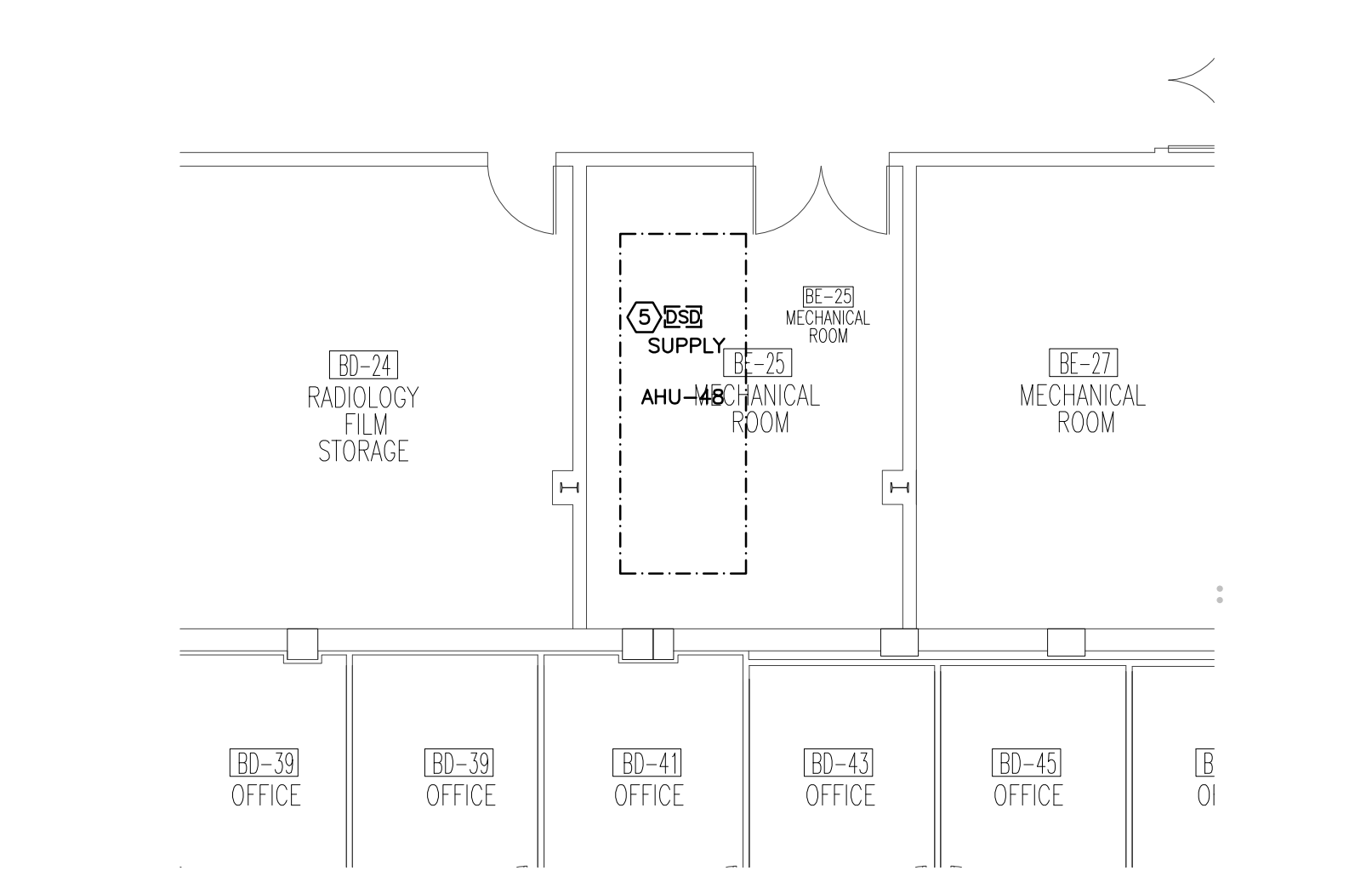
9 CC-103 FLOOR PLAN - ELECTRICAL
E11



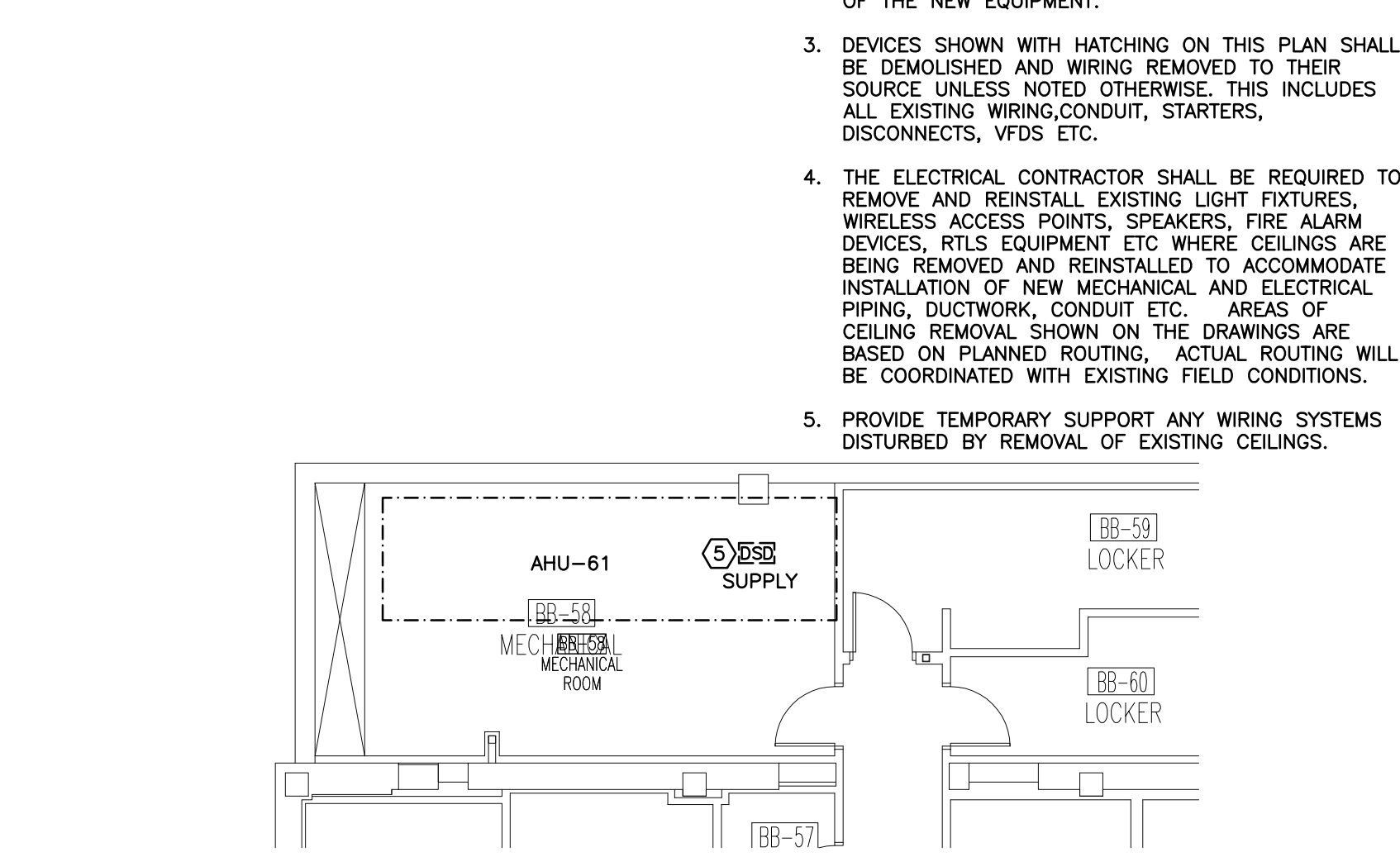
5 BA-10 FLOOR PLAN - ELECTRICAL
E11



6 BC-50A AND BC-50 FLOOR PLAN - ELECTRICAL
E11

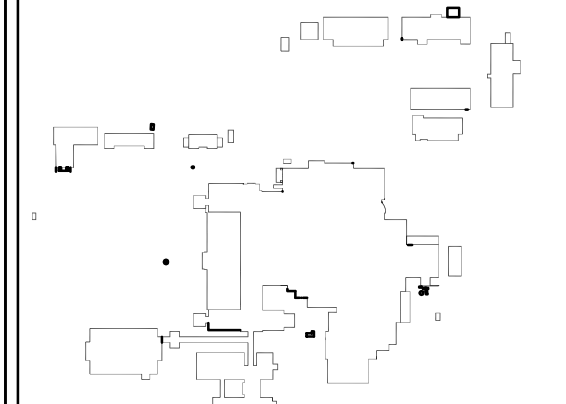


7 EXISTING LAYOUT BE-25 - ELECTRICAL
E11



8 EXISTING LAYOUT BB-58 - ELECTRICAL
E11

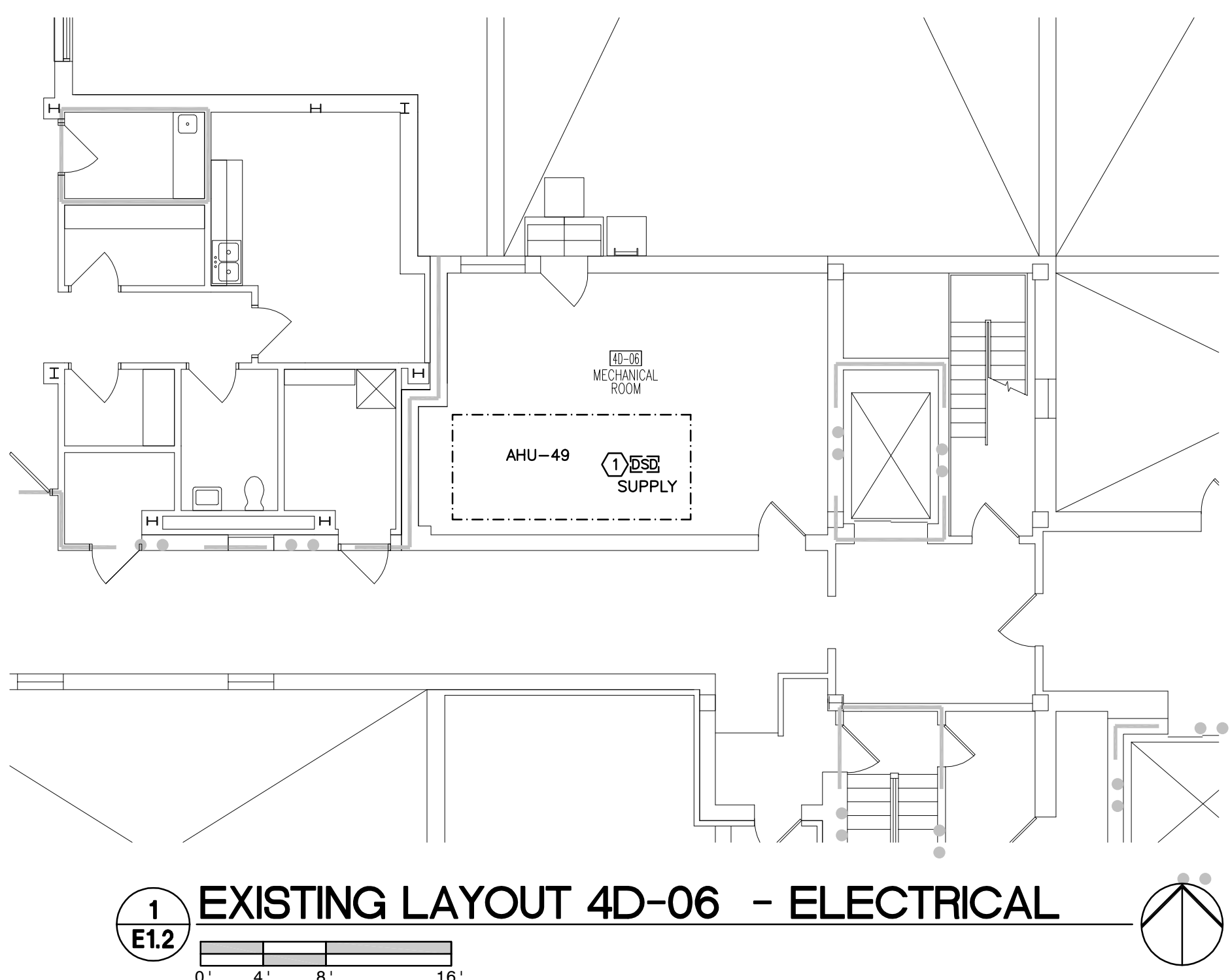
**Dept. of Veterans Affairs
Medical Center
2101 Elm Street
Fargo, ND 58102**



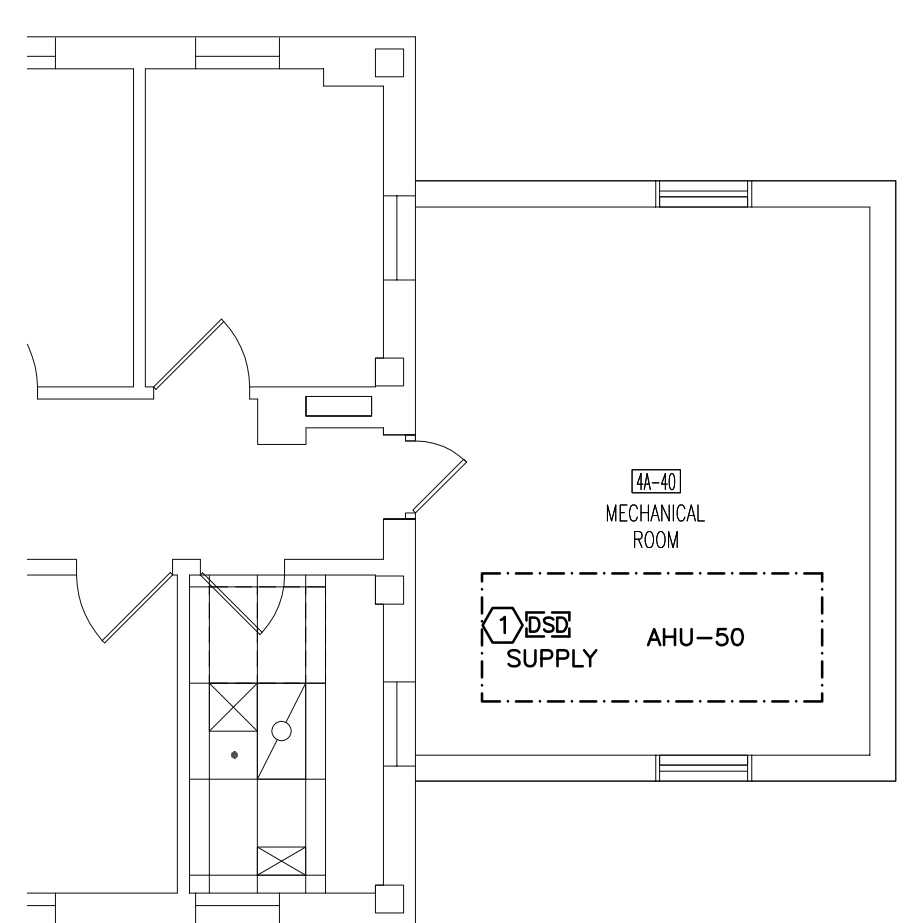
Drawing Title BASEMENT, 1ST, AND ATTIC FLOOR PLANS		Project Title REPLACE OR UPGRADE HVAC SYSTEM COMPONENTS		Date SEPT. 14, 2016
Project Phase PHASE 1		Contract No. VA263-P-1218		Scale AS NOTED
VA Project No. 437-13-111	Contract No. VA263-C-	Designed By CH	Checked By MB	Drawn By CH
Building No. VAMC CAMPUS	AutoCAD File Name 13-080.ELI.12_13.DWG	Location FARGO VA HEALTHCARE SYSTEM FARGO, NORTH DAKOTA		Drawing No. E11 Dwg. 56 of 66



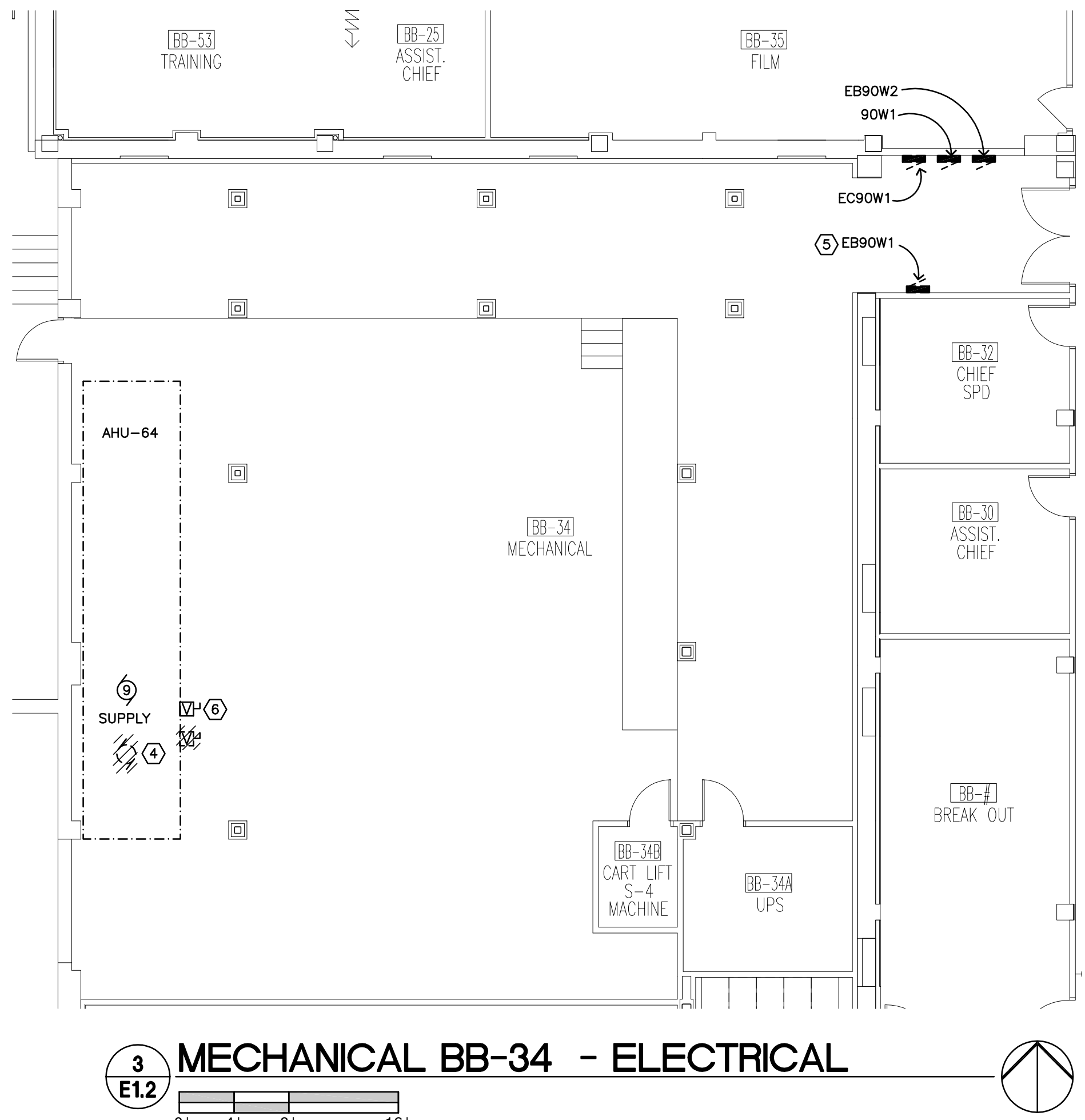
4:\Projects\2013\13-0932\Drawings\13-093_E11_12_13.dwg/14/2016 1:08 PM



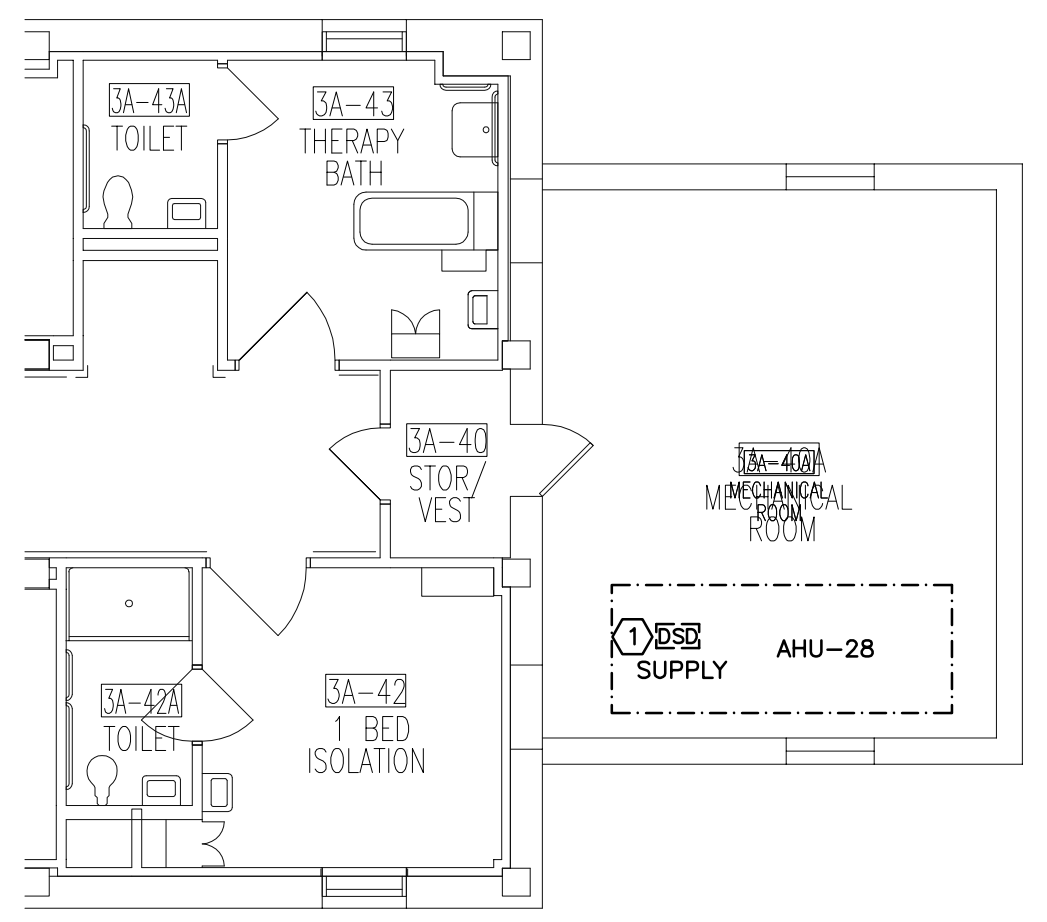
1 EXISTING LAYOUT 4D-06 - ELECTRICAL



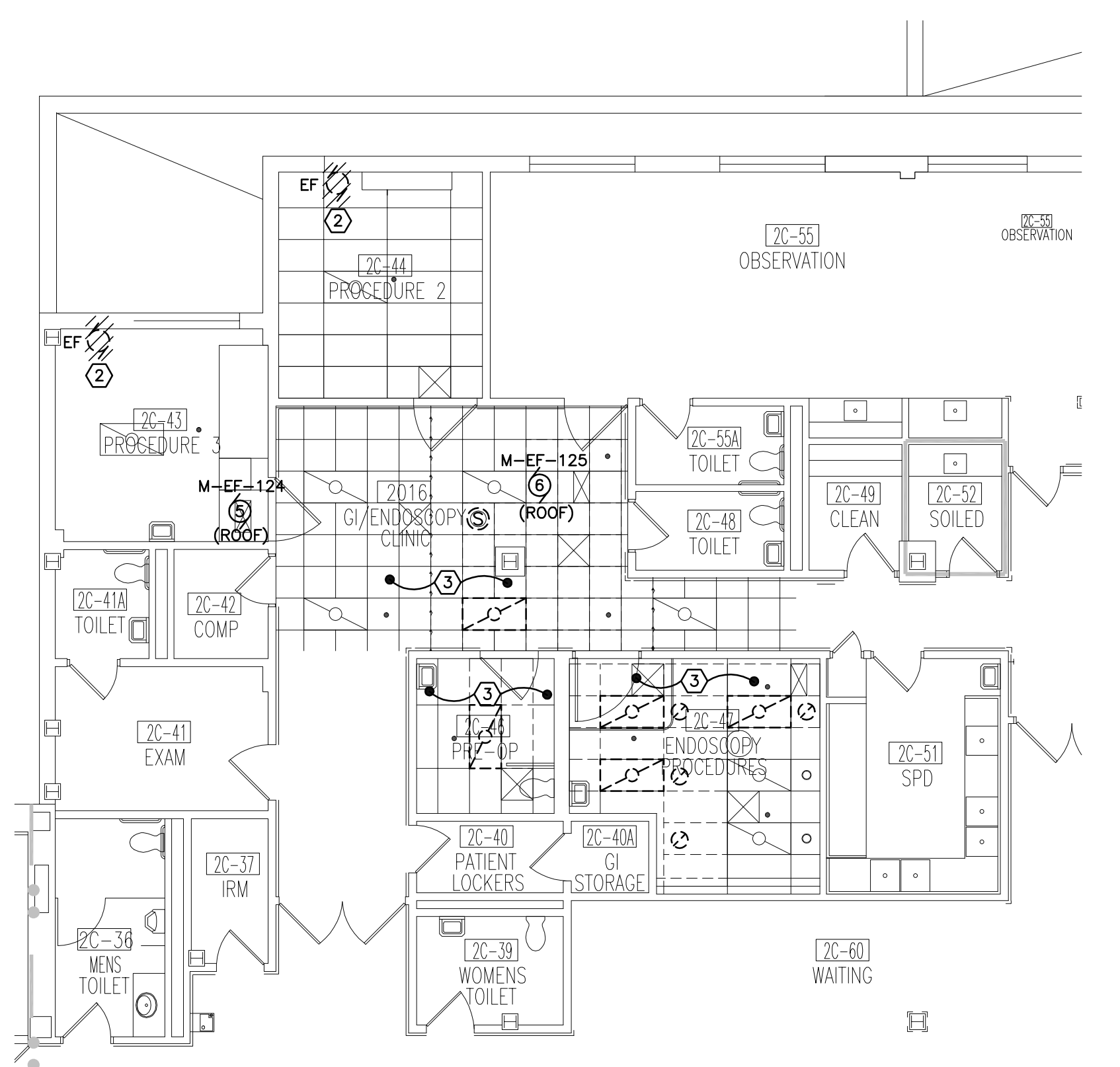
2 EXISTING LAYOUT 4A-40 - ELECTRICAL



3 MECHANICAL BB-34 - ELECTRICAL



4 EXISTING LAYOUT 3A-40A - ELECTRICAL



5 EXISTING GI CLINIC REMODELING PLAN- ELECTRICAL

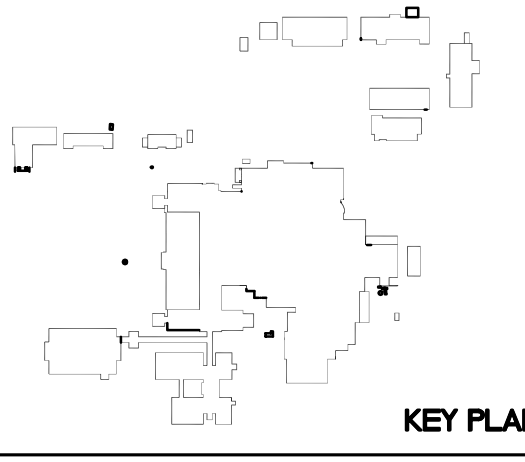
- PLAN NOTES:
- DISCONNECT EXISTING DUCT SMOKE DETECTOR FOR INSTALLATION OF NEW SUPPLY DUCT BY MECHANICAL CONTRACTOR. SALVAGE DETECTOR AND REINSTALL IN NEW DUCT, EXTEND EXISTING WIRE AND CONDUIT AS REQUIRED.
 - DISCONNECT EXISTING IN-WALL EXHAUST FAN AND REMOVE SURFACE CONDUIT. EXTEND EXISTING CIRCUIT TO NEW ROOF MOUNTED FANS, SEE M-EF-124 AND M-EF-125.
 - REMOVE AND REINSTALL EXISTING LIGHT FIXTURES, SPEAKERS, ETC TO ACCOMMODATE INSTALLATION OF NEW PIPING AND DUCTWORK IN THIS AREA, COORDINATE WITH MECHANICAL CONTRACTOR.
 - DISCONNECT EXISTING SUPPLY FAN AND ASSOCIATED VFDS, REMOVE EXISTING WIRING AND CONDUIT.
 - ADD 125A/3P BREAKER FOR NEW SUPPLY FAN IN AHU-64.
 - NEW SUPPLY FAN FURNISHED WITH FACTORY INSTALLED VFD AND FACTORY WIRING BETWEEN FAN AND VFD. ELECTRICAL CONTRACTOR SHALL PROVIDE SINGLE POINT CONNECTION TO UNIT.

- GENERAL NOTES:
- PHASING OF DEMOLITION OF EXISTING EQUIPMENT AND INSTALLATION OF NEW EQUIPMENT SHALL BE CLOSELY COORDINATED WITH THE OWNER AND THE MECHANICAL CONTRACTOR PRIOR TO BEGINNING WORK. SHUTDOWN OF EXISTING MECHANICAL EQUIPMENT AND SWITCHOVER TO NEW EQUIPMENT WORK WILL OCCUR AFTER REGULAR OPERATING HOURS AND ON WEEKENDS.
 - TEMPORARY FAN CONNECTIONS FOR AIR HANDLING UNITS WILL BE REQUIRED AS NOTED ON THE DRAWINGS. THE ELECTRICAL CONTRACTOR SHALL EXTEND EXISTING CIRCUITING OR PROVIDE NEW AS NECESSARY FOR TEMPORARY POWER, THEN REMOVE THE CONNECTION IN ITS ENTIRETY UPON INSTALLATION OF THE NEW EQUIPMENT.
 - DEVICES SHOWN WITH HATCHING ON THIS PLAN SHALL BE DEMOLISHED AND WIRING REMOVED TO THEIR SOURCE UNLESS NOTED OTHERWISE. THIS INCLUDES ALL EXISTING WIRING, CONDUIT, STARTERS, DISCONNECTS, VFDS ETC.
 - THE ELECTRICAL CONTRACTOR SHALL BE REQUIRED TO REMOVE AND REINSTALL EXISTING LIGHT FIXTURES, WIRELESS ACCESS POINTS, SPEAKERS, FIRE ALARM DEVICES, RTLS EQUIPMENT ETC WHERE CEILINGS ARE BEING REMOVED AND REINSTALLED TO ACCOMMODATE INSTALLATION OF NEW MECHANICAL AND ELECTRICAL PIPING, DUCTWORK, CONDUIT ETC. AREAS OF CEILING REMOVAL SHOWN ON THE DRAWINGS ARE BASED ON PLANNED ROUTING. ACTUAL ROUTING WILL BE COORDINATED WITH EXISTING FIELD CONDITIONS.
 - PROVIDE TEMPORARY SUPPORT ANY WIRING SYSTEMS DISTURBED BY REMOVAL OF EXISTING CEILINGS.

4:\Projects\2013\13-093\Draws\13-093_E1.1_12.13.dwg/14/2016 1:08 PM

Revisions	Date

Dept. of Veterans Affairs
Medical Center
 2101 Elm Street
 Fargo, ND 58102

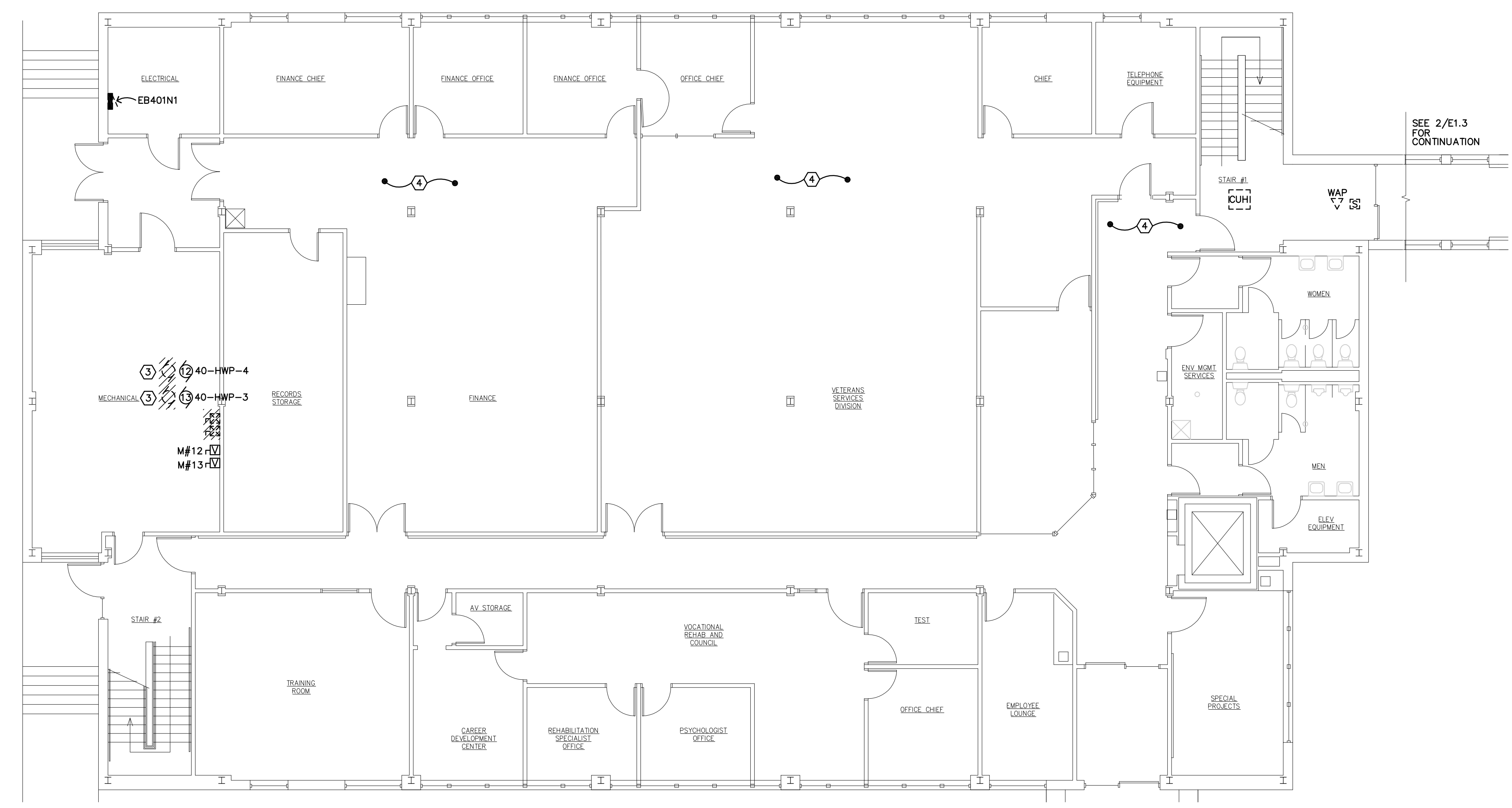


Drawing Title BASEMENT, 2ND, 3RD, AND 4TH FLOOR PLANS		Project Title REPLACE OR UPGRADE HVAC SYSTEM COMPONENTS		Date SEPT.14, 2016
Project Phase PHASE 1		Scale: AS NOTED		Drawing No. E1.2 Dwg. 57 of 66
VA Project No. 437-13-111	Contract No. VA263-P-1216	Designed By CH	Checked By MB	
Building No. VAMC CAMPUS	AutoCAD File Name 13-093 E1.12_13.DWG	Location FARGO VA HEALTHCARE SYSTEM	Drawn By CH	

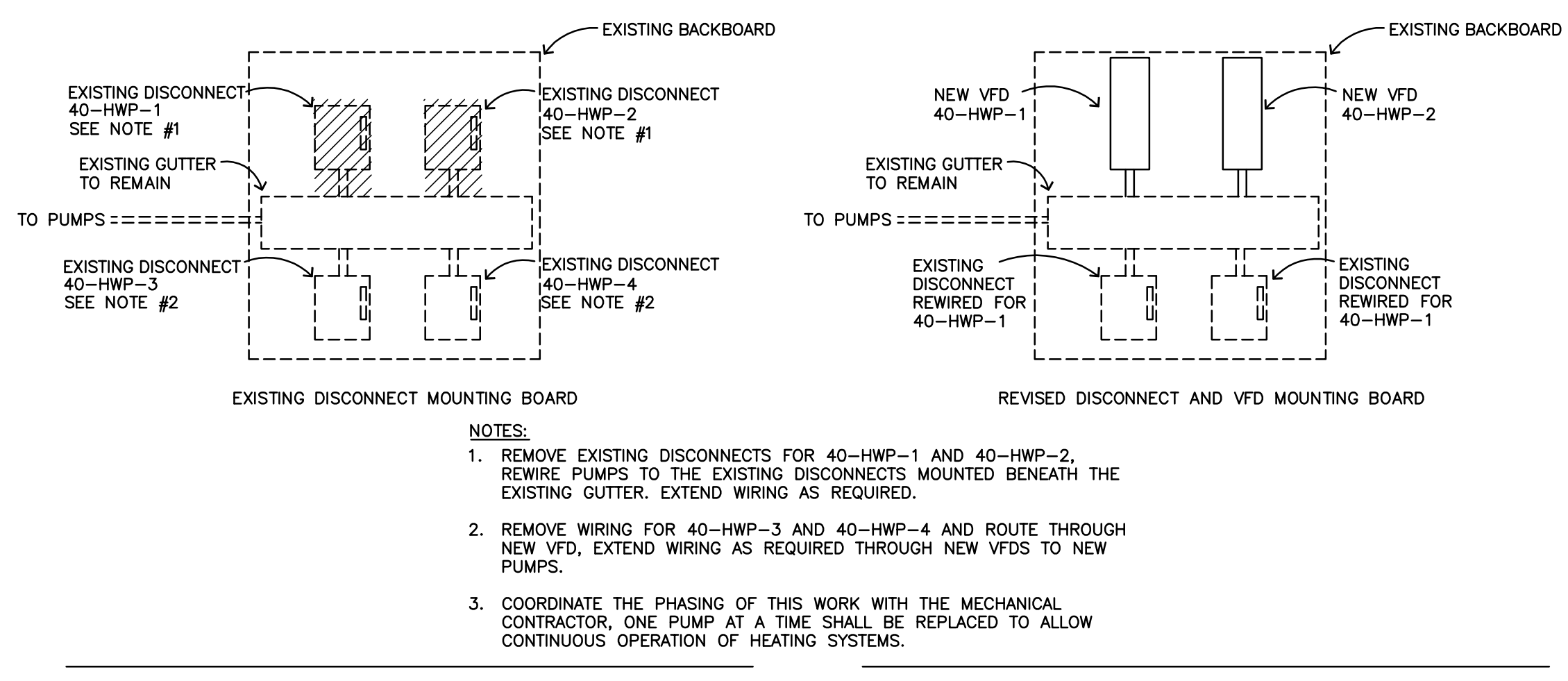
Department of Veterans Affairs

- PLAN NOTES:**
- CONNECT TO SPARE 20A/1P BREAKER IN PANEL EB401N1.
 - #8, #10G IN 3/4" CONDUIT TO PANEL EB401N1 IN BUILDING 40 MAIN LEVEL ELECTRICAL ROOM. ADD 20A/3P BREAKER IN EXISTING SQUARE D PANEL AND CONNECT. SEE 2/E1.3 FOR PANEL LOCATION.
 - REMOVE EXISTING PUMP AND ASSOCIATED DISCONNECT, REWIRE NEW PUMP TO EXISTING CIRCUIT VIA NEW VFD. SEE DETAIL 3/E1.3 AND MOTOR AND EQUIPMENT SCHEDULE FOR ADDITIONAL INFORMATION.
 - REMOVE/REPLACE EXISTING CEILING TILES, LIGHTS ETC FOR INSTALLATION OF NEW CONNECTING LINK HEATERS.

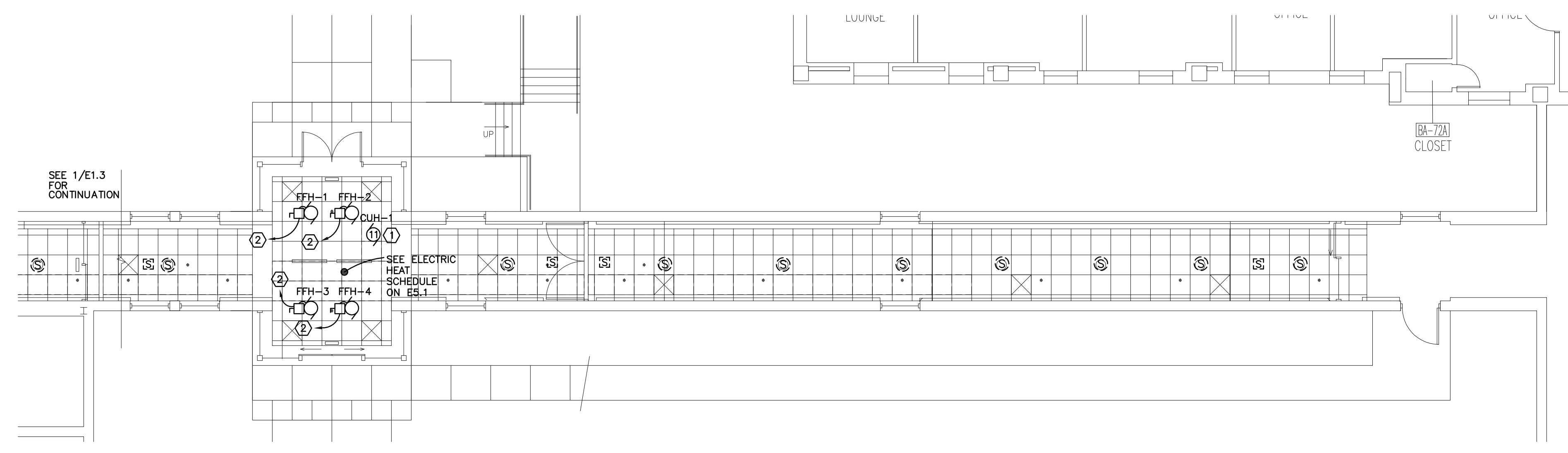
- GENERAL NOTES:**
- PHASING OF DEMOLITION OF EXISTING EQUIPMENT AND INSTALLATION OF NEW EQUIPMENT SHALL BE CLOSELY COORDINATED WITH THE OWNER AND THE MECHANICAL CONTRACTOR PRIOR TO BEGINNING WORK. SHUTDOWN OF EXISTING MECHANICAL EQUIPMENT AND SWITCHOVER TO NEW EQUIPMENT WORK WILL OCCUR AFTER REGULAR OPERATING HOURS AND ON WEEKENDS.
 - TEMPORARY FAN CONNECTIONS FOR AIR HANDLING UNITS WILL BE REQUIRED AS NOTED ON THE DRAWINGS. THE ELECTRICAL CONTRACTOR SHALL EXTEND EXISTING CIRCUITING OR PROVIDE NEW AS NECESSARY FOR TEMPORARY POWER. THEN REMOVE THE CONNECTION IN ITS ENTIRETY UPON INSTALLATION OF THE NEW EQUIPMENT.
 - DEVICES SHOWN WITH HATCHING ON THIS PLAN SHALL BE DEMOLISHED AND WIRING REMOVED TO THEIR SOURCE UNLESS NOTED OTHERWISE. THIS INCLUDES ALL EXISTING WIRING, CONDUIT, STARTERS, DISCONNECTS, VFDs ETC.
 - THE ELECTRICAL CONTRACTOR SHALL BE REQUIRED TO REMOVE AND REINSTALL EXISTING LIGHT FIXTURES, WIRELESS ACCESS POINTS, SPEAKERS, FIRE ALARM DEVICES, RTLS EQUIPMENT ETC WHERE CEILING ARE BEING REMOVED AND REINSTALLED TO ACCOMMODATE INSTALLATION OF NEW MECHANICAL AND ELECTRICAL PIPING, DUCTWORK, CONDUIT ETC. AREAS OF CEILING REMOVAL SHOWN ON THE DRAWINGS ARE BASED ON PLANNED ROUTING. ACTUAL ROUTING WILL BE COORDINATED WITH EXISTING FIELD CONDITIONS.
 - PROVIDE TEMPORARY SUPPORT ANY WIRING SYSTEMS DISTURBED BY REMOVAL OF EXISTING CEILING.



1 BUILDING 40 - ELECTRICAL
 E1.3
 0' 4' 8' 16'



3 BUILDING #40 PUMP REVISIONS
 E1.3 NO SCALE



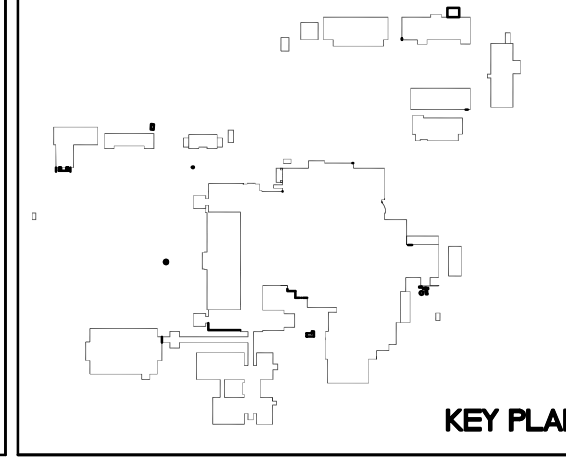
2 BUILDING 40 CONNECTING LINK FLOOR PLAN - ELECTRICAL
 E1.3
 0' 4' 8' 16'

J:\Projects\2013\13-093\Drawings\13-093 E1.1_12_13.dwg/14/2016 1:08 PM

Revisions	Date

Dept. of Veterans Affairs
Medical Center
 2101 Elm Street
 Fargo, ND 58102

MBN
 MECHANICAL • ELECTRICAL • CIVIL
 803 7th St N, Suite 200
 Fargo, ND 58102
 Phone: 701.478.0200
 Fax: 701.478.0204



Drawing Title BUILDING 40 FLOOR PLANS		Project Title REPLACE OR UPGRADE HVAC SYSTEM COMPONENTS		Date SEPT.14, 2016
Project Phase PHASE 1		Contract No. VA263-P-1216 VA263-C-		Scale: AS NOTED
VA Project No. 437-13-111	AutoCAD File Name 13-093 E1.12_13.DWG	Designed By CH	Checked By MB	Drawn By CH
Building No. VAMC CAMPUS		Location FARGO VA HEALTHCARE SYSTEM FARGO, NORTH DAKOTA		Drawing No. E13 Dwg. 58 of 66

Department of Veterans Affairs