



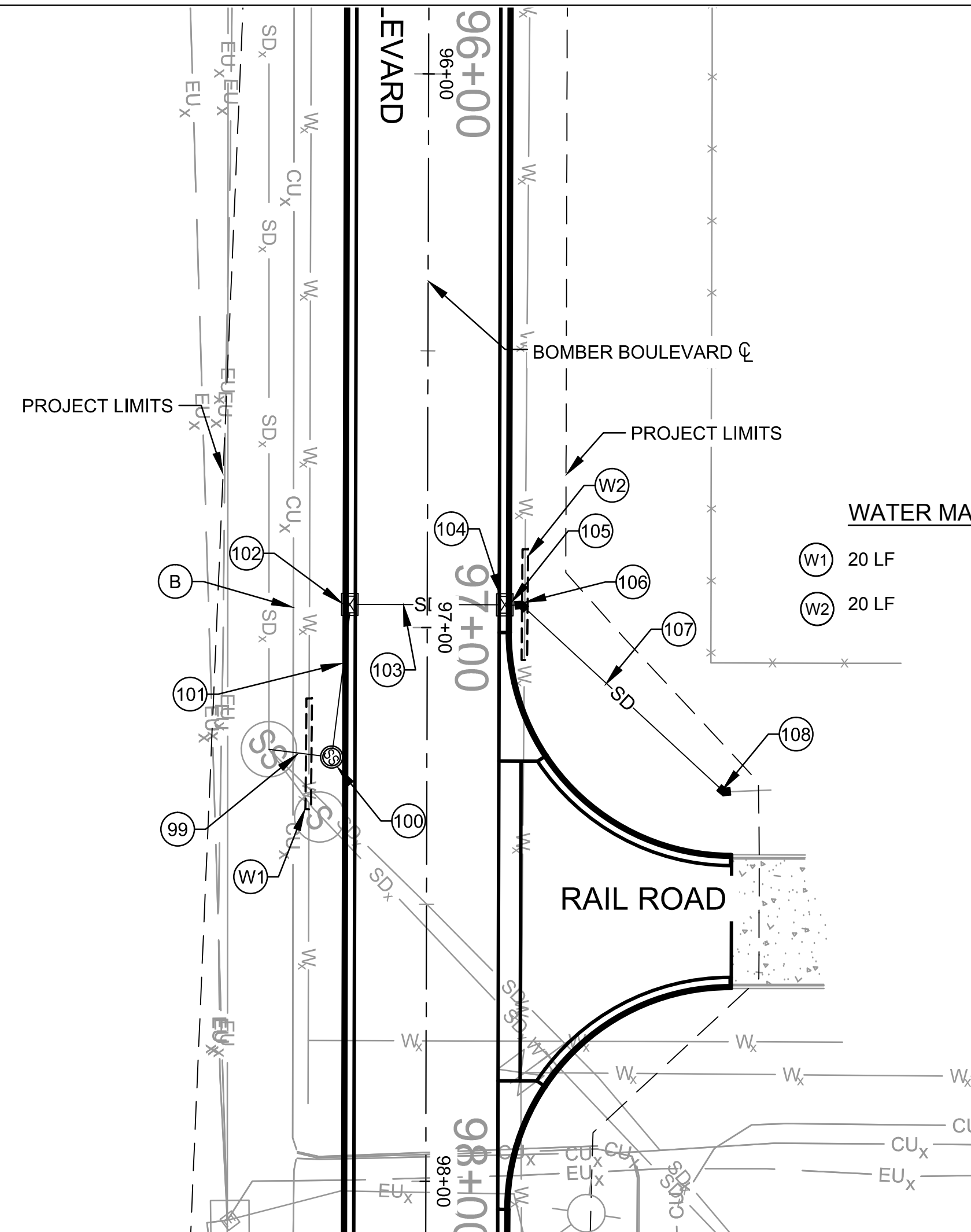
MARK	DESCRIPTION	DATE	APPR.

DATE:	05/18/2017
SOLICITATION NO.:	W9128F-14-R-008-0003
CONTRACT NO.:	W9128F-15-D-0018
FILE NUMBER:	AF851-10-01
DESIGNED BY:	SHANE MATT
CKD BY:	SMATT
DWN BY:	KM
SUBMITTED BY:	FOURFRONT DESIGN INC.
FOURFRONT DESIGN INC.	6/3/17
PLOT SCALE:	1" = 1'
FILE NAME:	CU107
SIZE:	3422

U.S. ARMY CORPS OF ENGINEERS	OMAHA DISTRICT	OMAHA, NEBRASKA
REPAIR BOMBER BOULEVARD	MINOT AFB	
BOMBER BOULEVARD	PLAN AND PROFILE	STORM SEWER

THIS DOCUMENT WAS ORIGINALLY ISSUED AND SEALED BY SHANE A. MATT, REGISTERED PROFESSIONAL ENGINEER IN SOUTH DAKOTA, LICENSE # 7899, ON 6/23/14. THIS MEDIA SHOULD NOT BE CONSIDERED A CERTIFIED DOCUMENT.

SHEET IDENTIFICATION
CU107
SHEET 135 OF 142

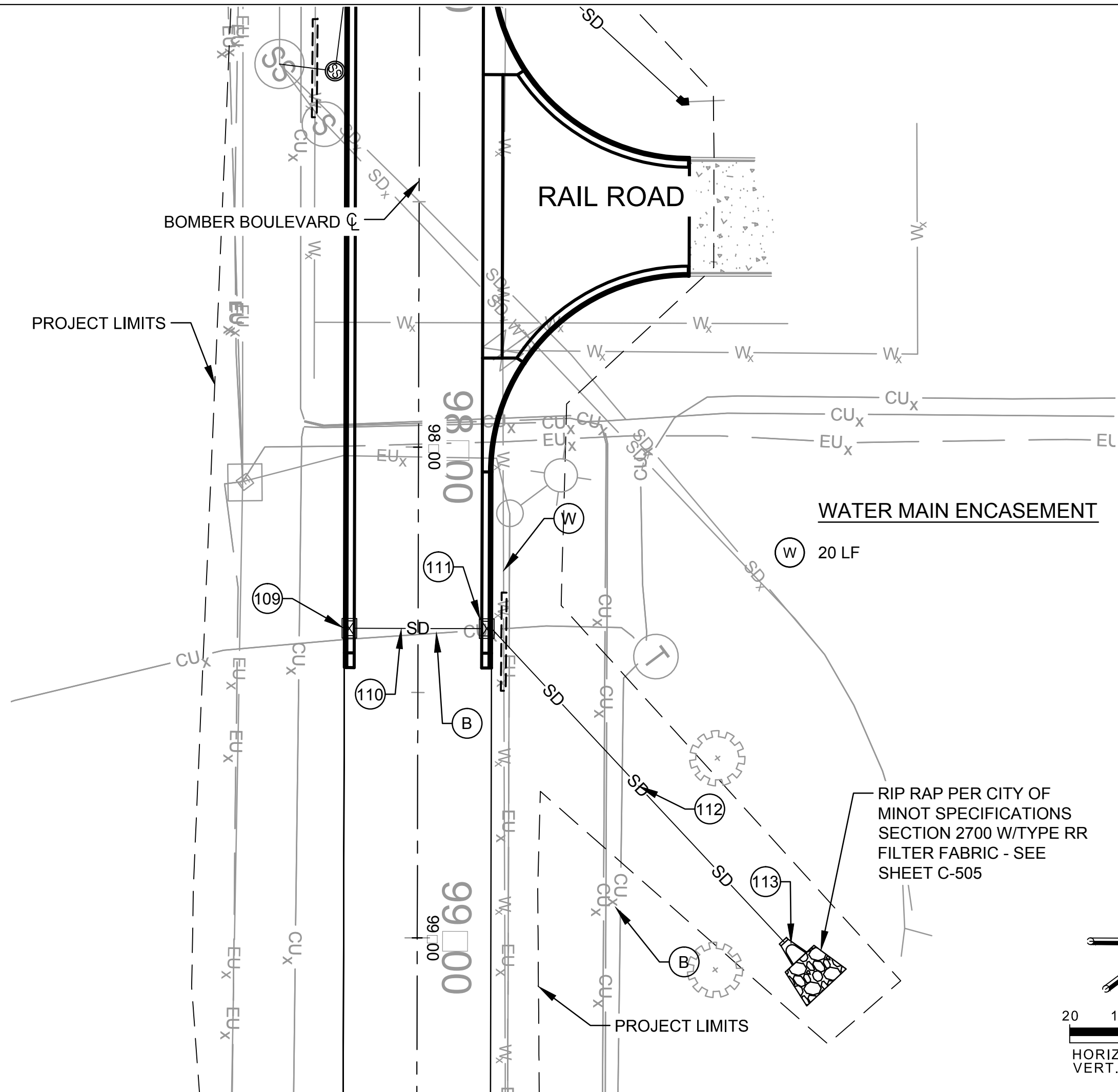


WATER MAIN ENCASEMENT

- (W1) 20 LF
- (W2) 20 LF

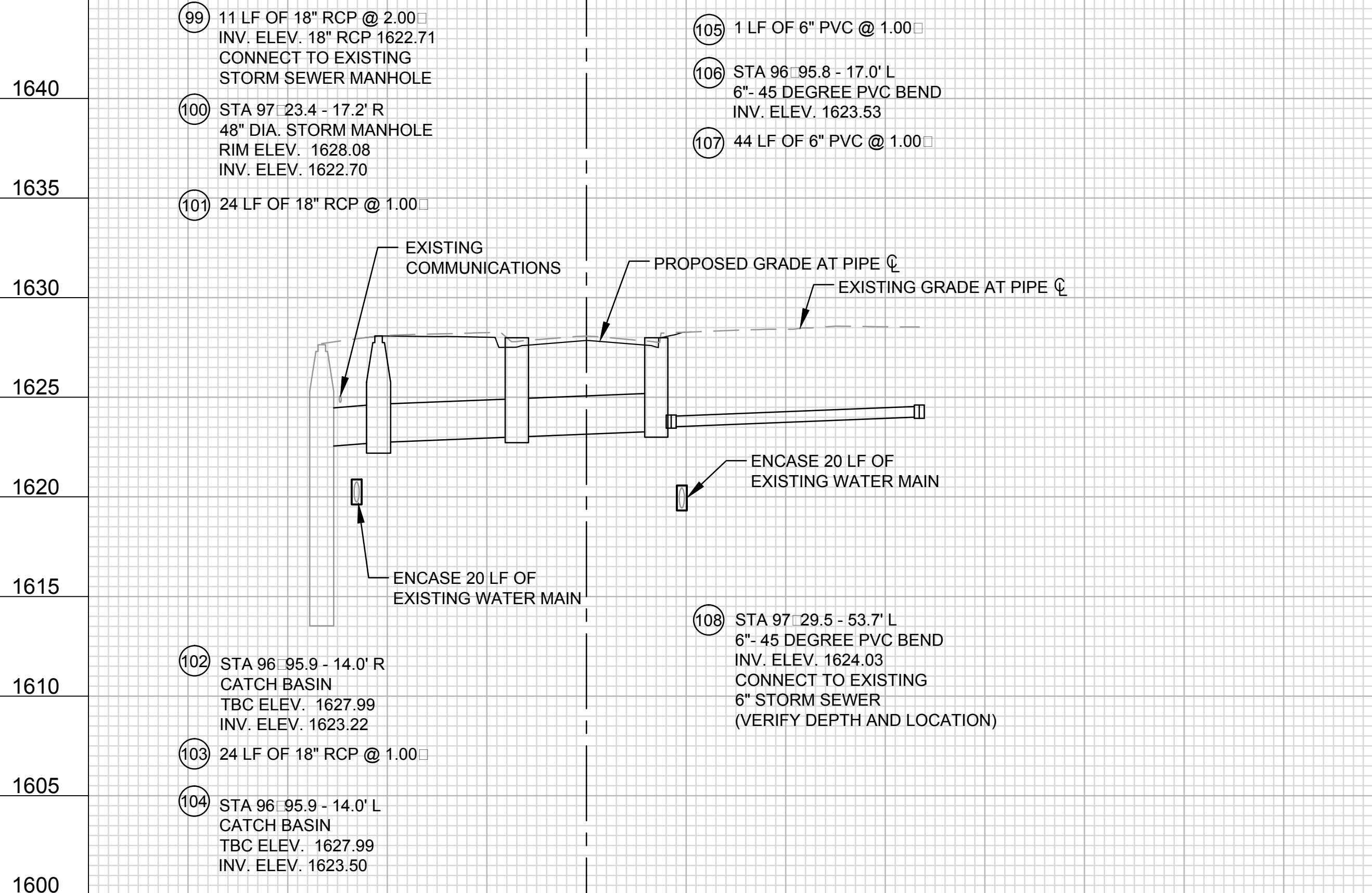
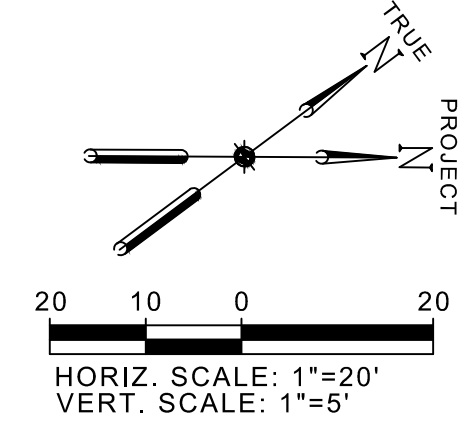
EXCAVATION HAZARDS

- (A) UNDERGROUND POWER LINE
VERIFY DEPTH AND LOCATION
- (B) UNDERGROUND COMMUNICATIONS LINE
VERIFY DEPTH AND LOCATION
- (C) UNDERGROUND GAS LINE
VERIFY DEPTH AND LOCATION



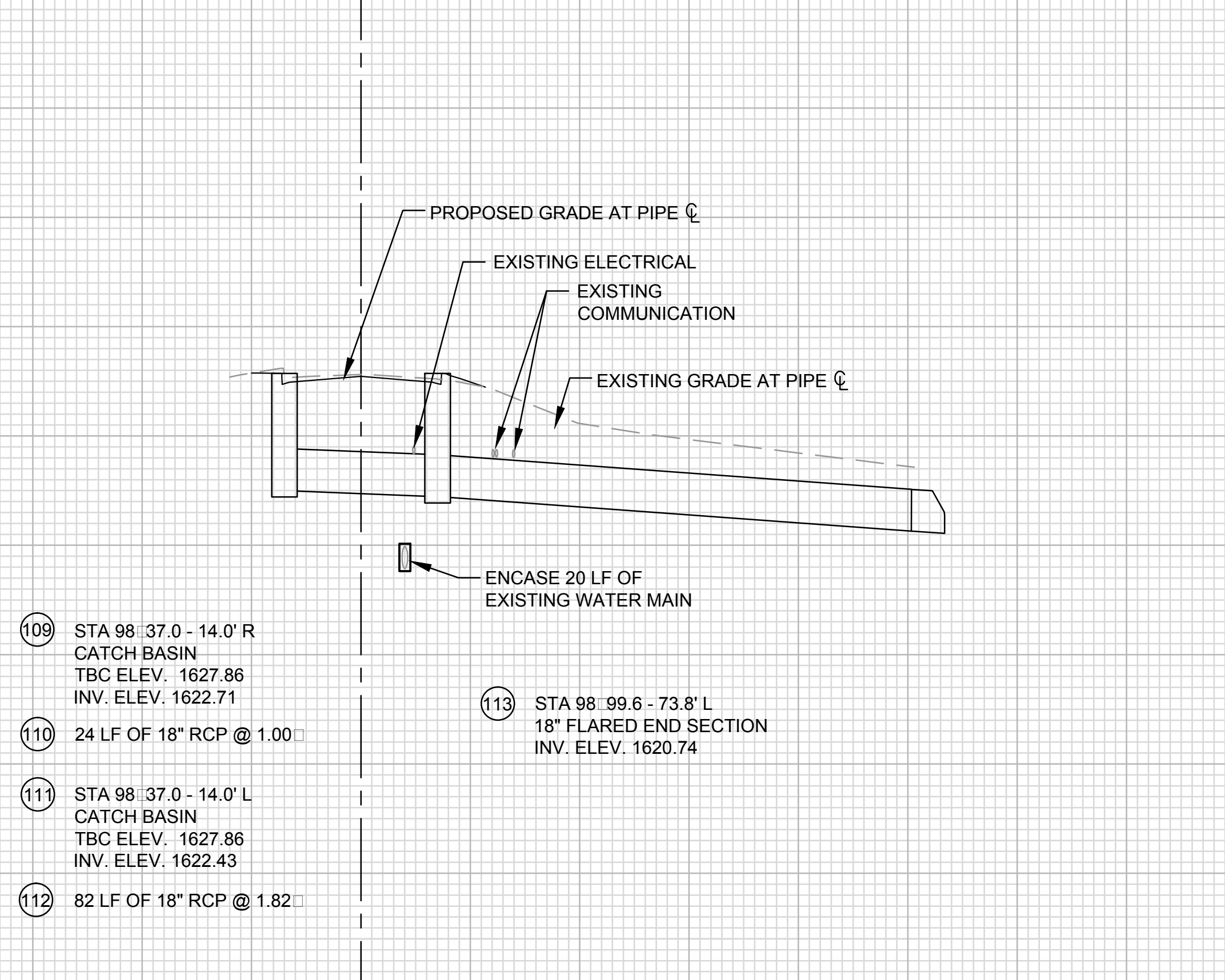
WATER MAIN ENCASEMENT

- (W) 20 LF



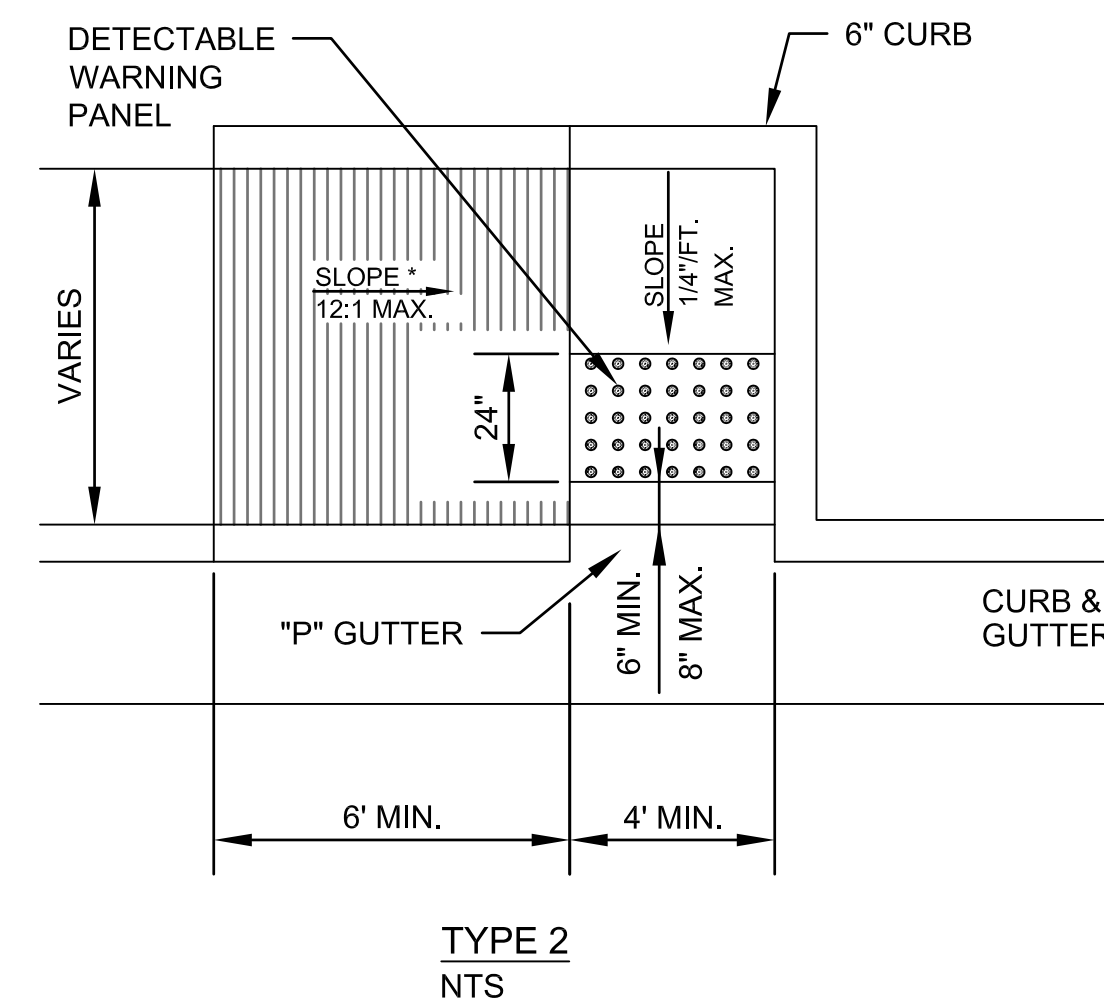
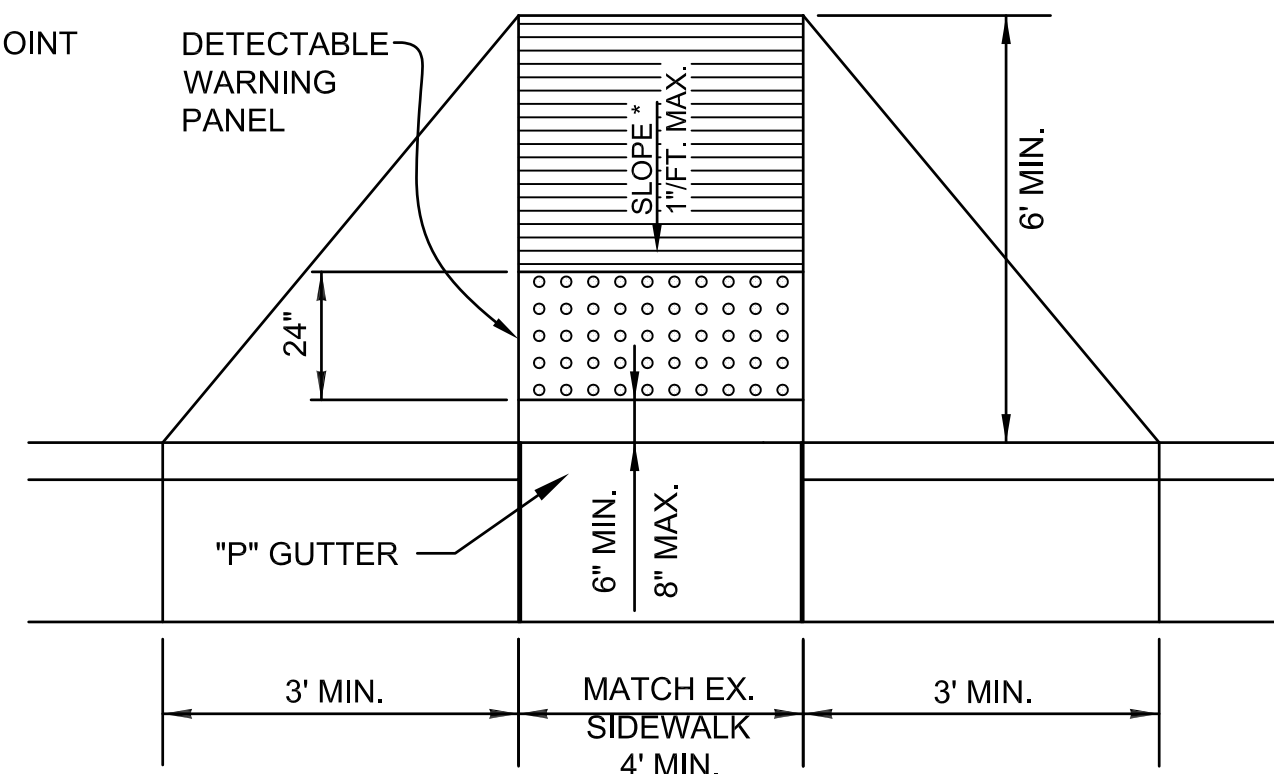
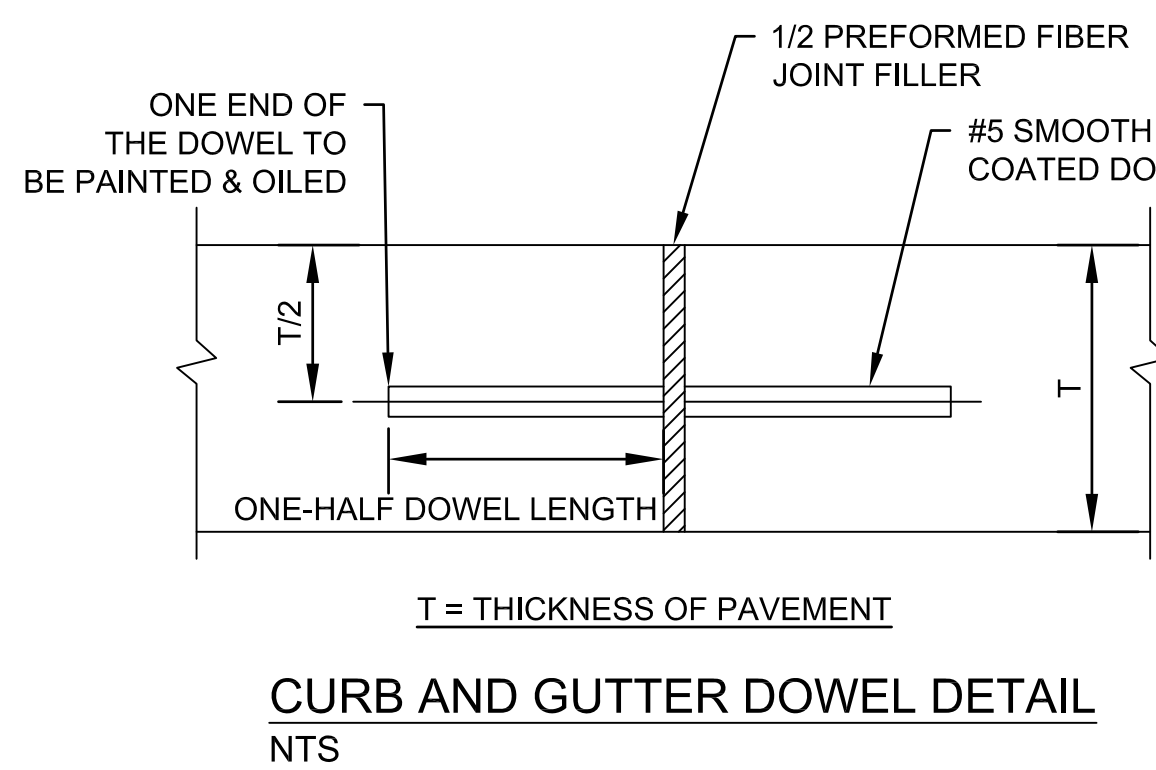
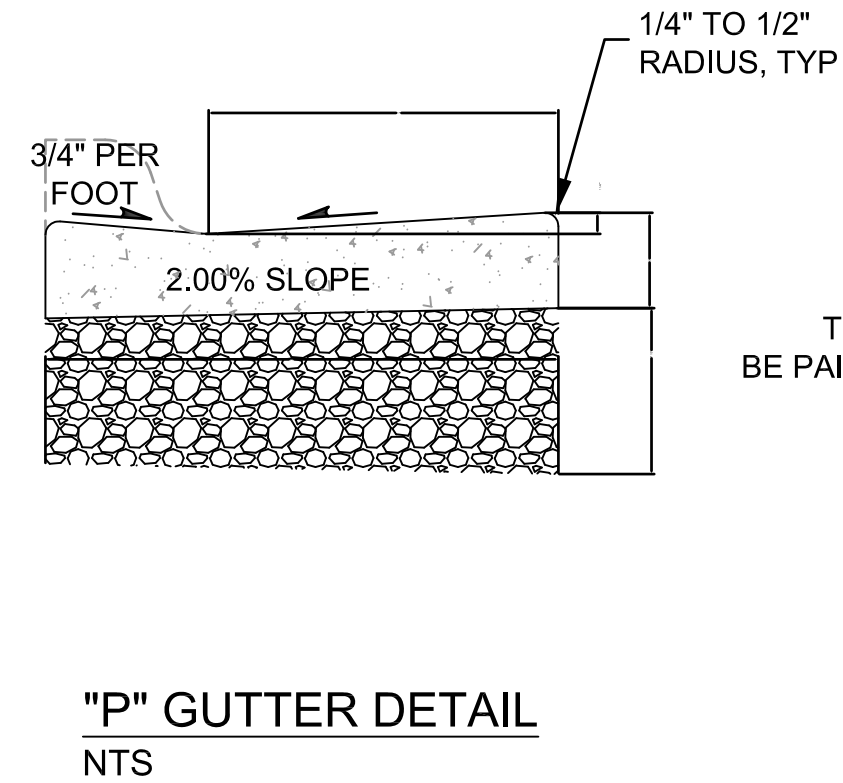
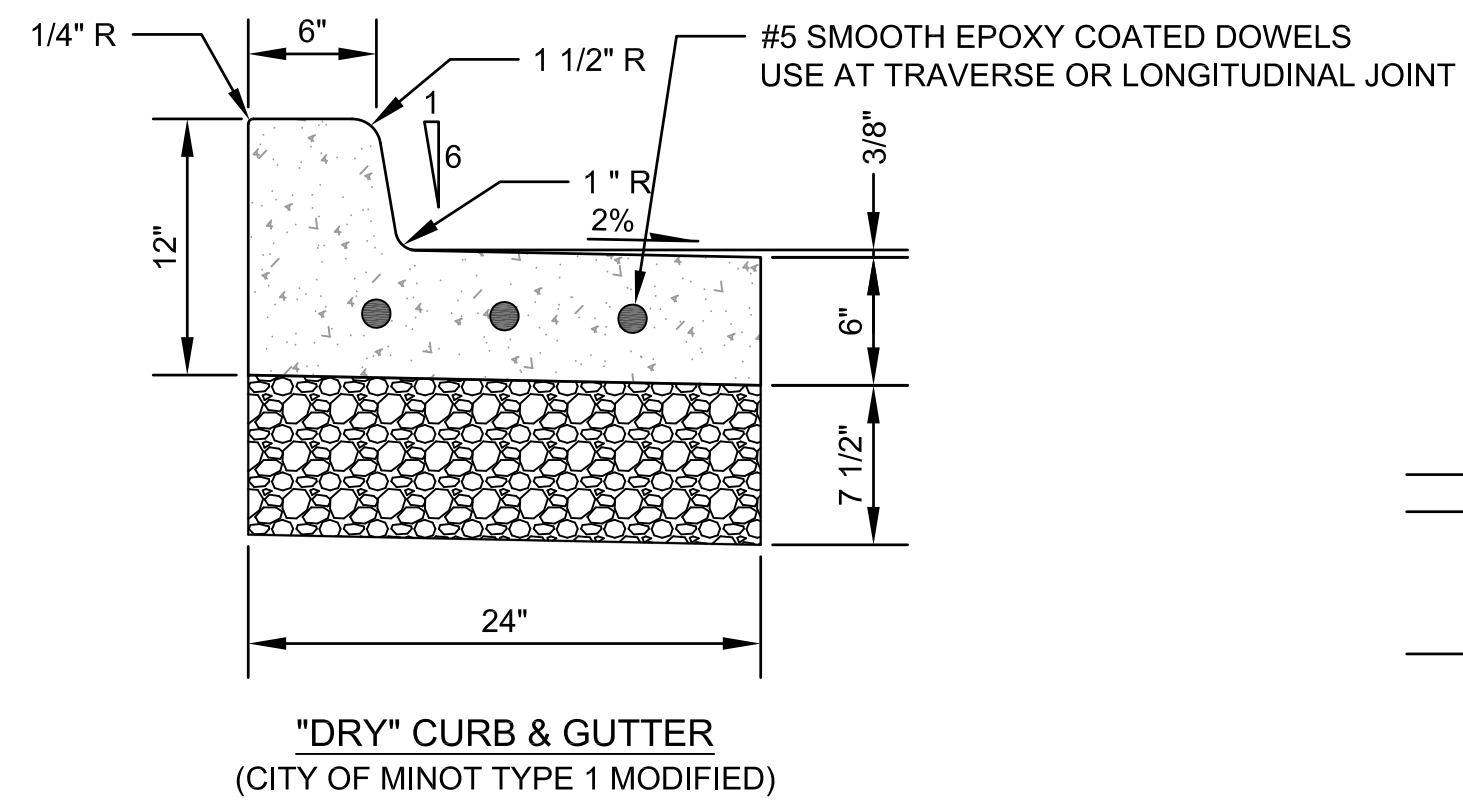
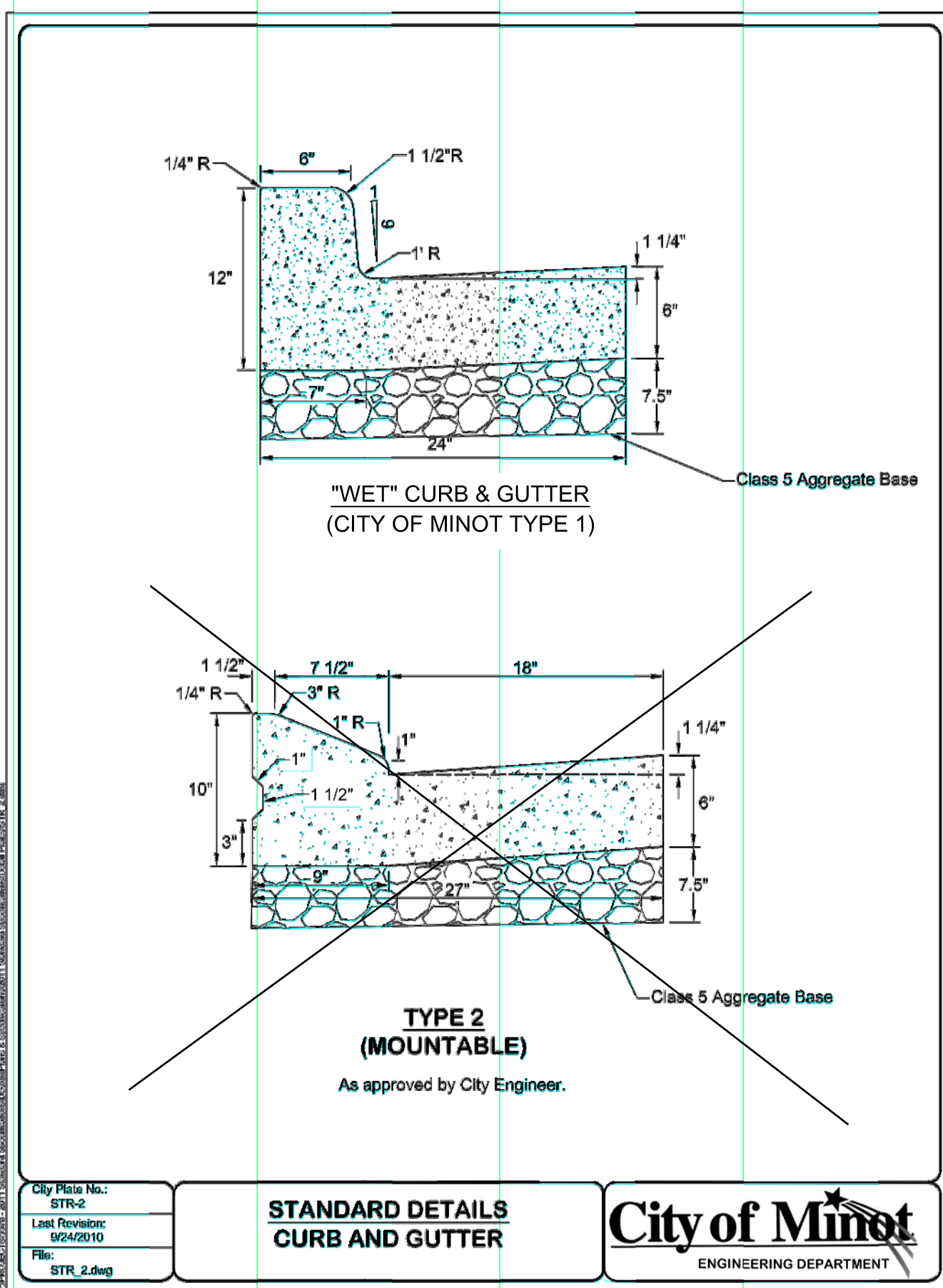
1640
1635
1630
1625
1620
1615
1610
1605
1600

- (99) 11 LF OF 18" RCP @ 2.00'
INV. ELEV. 18" RCP 1622.71
CONNECT TO EXISTING
STORM SEWER MANHOLE
- (100) STA 97 23.4 - 17.2' R
48" DIA. STORM MANHOLE
RIM ELEV. 1628.08
INV. ELEV. 1622.70
- (101) 24 LF OF 18" RCP @ 1.00'
- (102) STA 96 95.9 - 14.0' R
CATCH BASIN
TBC ELEV. 1627.99
INV. ELEV. 1623.22
- (103) 24 LF OF 18" RCP @ 1.00'
- (104) STA 96 95.9 - 14.0' L
CATCH BASIN
TBC ELEV. 1627.99
INV. ELEV. 1623.50
- (105) 1 LF OF 6" PVC @ 1.00'
- (106) STA 96 95.8 - 17.0' L
6"- 45 DEGREE PVC BEND
INV. ELEV. 1623.53
- (107) 44 LF OF 6" PVC @ 1.00'
- (108) STA 97 29.5 - 53.7' L
6"- 45 DEGREE PVC BEND
CONNECT TO EXISTING
6" STORM SEWER
(VERIFY DEPTH AND LOCATION)



- (109) STA 98 37.0 - 14.0' R
CATCH BASIN
TBC ELEV. 1627.86
INV. ELEV. 1622.71
- (110) 24 LF OF 18" RCP @ 1.00'
- (111) STA 98 37.0 - 14.0' L
CATCH BASIN
TBC ELEV. 1627.86
INV. ELEV. 1622.43
- (112) 82 LF OF 18" RCP @ 1.82'

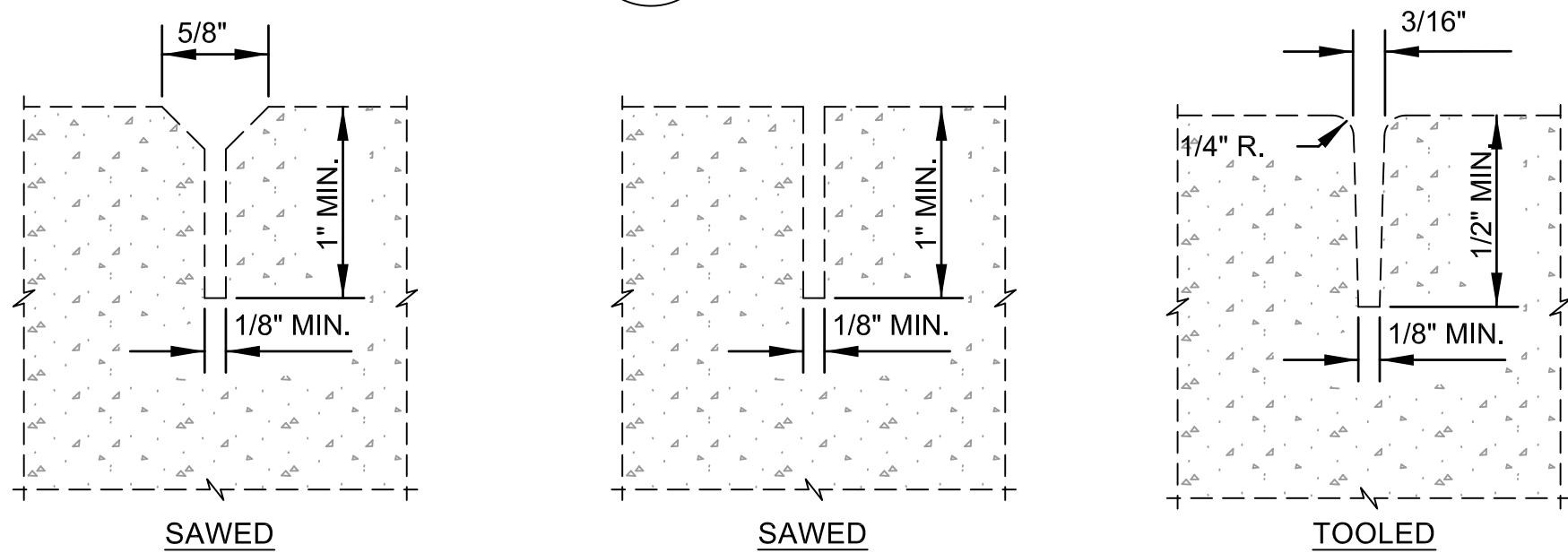
1640
1635
1630
1625
1620
1615
1610
1605
1600



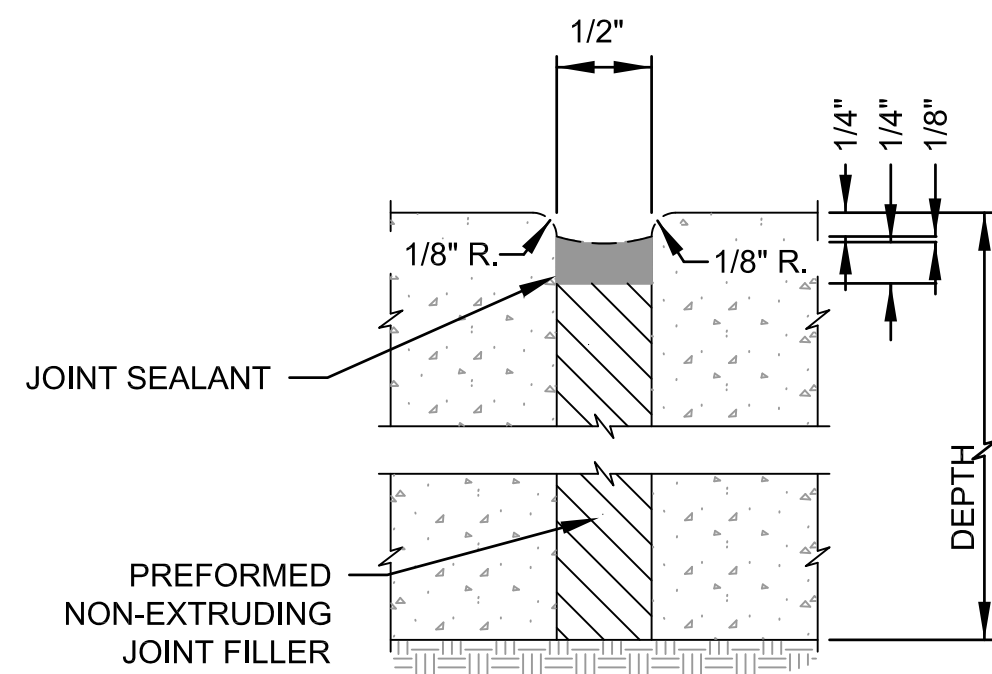
NOTES:

1. SURFACE TEXTURE OF THE RAMP SHALL BE OBTAINED BY A COARSE BROOMING AND TINGING, TRANSVERSE TO THE SLOPE OF THE RAMP.
2. DETECTABLE WARNING PANEL SHALL BE OF VITRIFIED POLYMER COMPOSITE CONSTRUCTION, CAST-IN-PLACE TYPE, MANUFACTURED BY ARMOR TILE TACTILE SYSTEMS, FEDERAL YELLOW IN COLOR, OR APPROVED EQUAL.
3. CARE SHALL BE TAKEN TO ASSURE A UNIFORM GRADE ON THE RAMP, FREE OF SAGS AND SHORT GRADE CHANGES.
4. THE NORMAL GUTTER LINE PROFILE SHALL BE MAINTAINED THROUGH THE AREA OF THE RAMP OPENING.
5. CROSS SLOPES SHALL NOT EXCEED 2%.

C1 CURB AND GUTTER
NTS

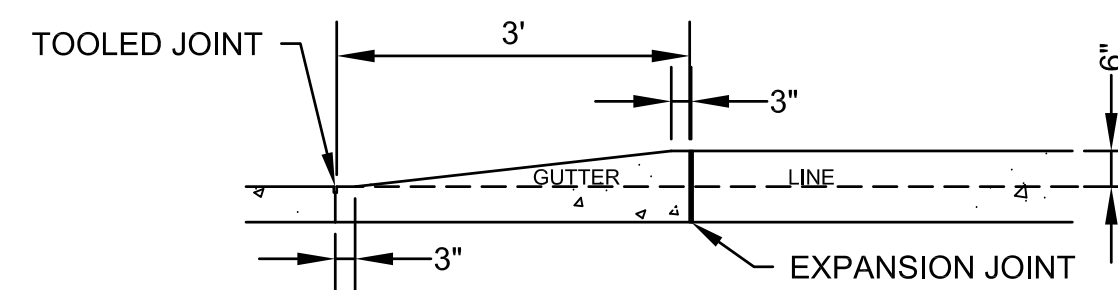


CONTRACTION JOINT

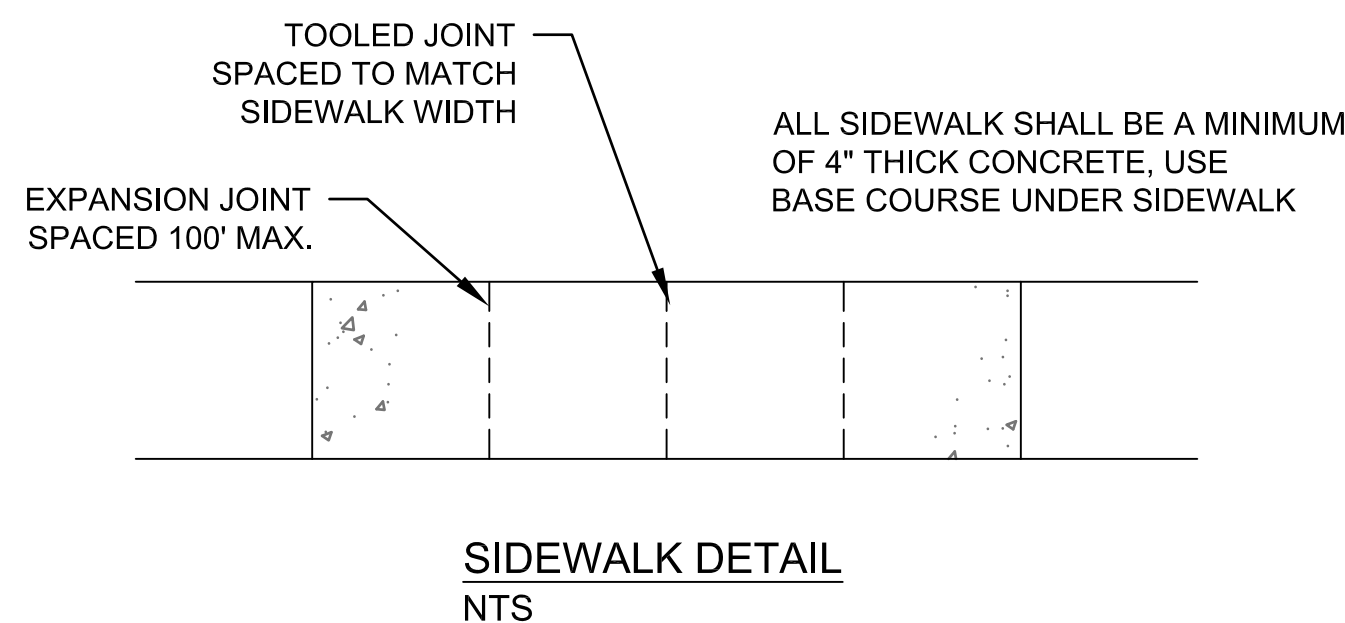


C5 SIDEWALK JOINT DETAILS
NTS

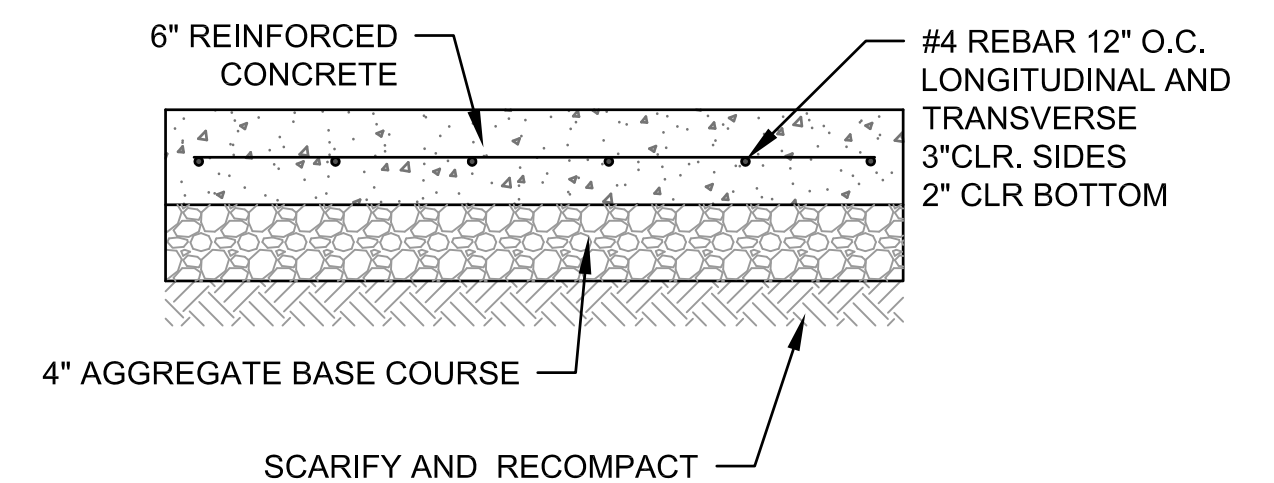
C2 ADA SIDEWALK RAMPS
NTS



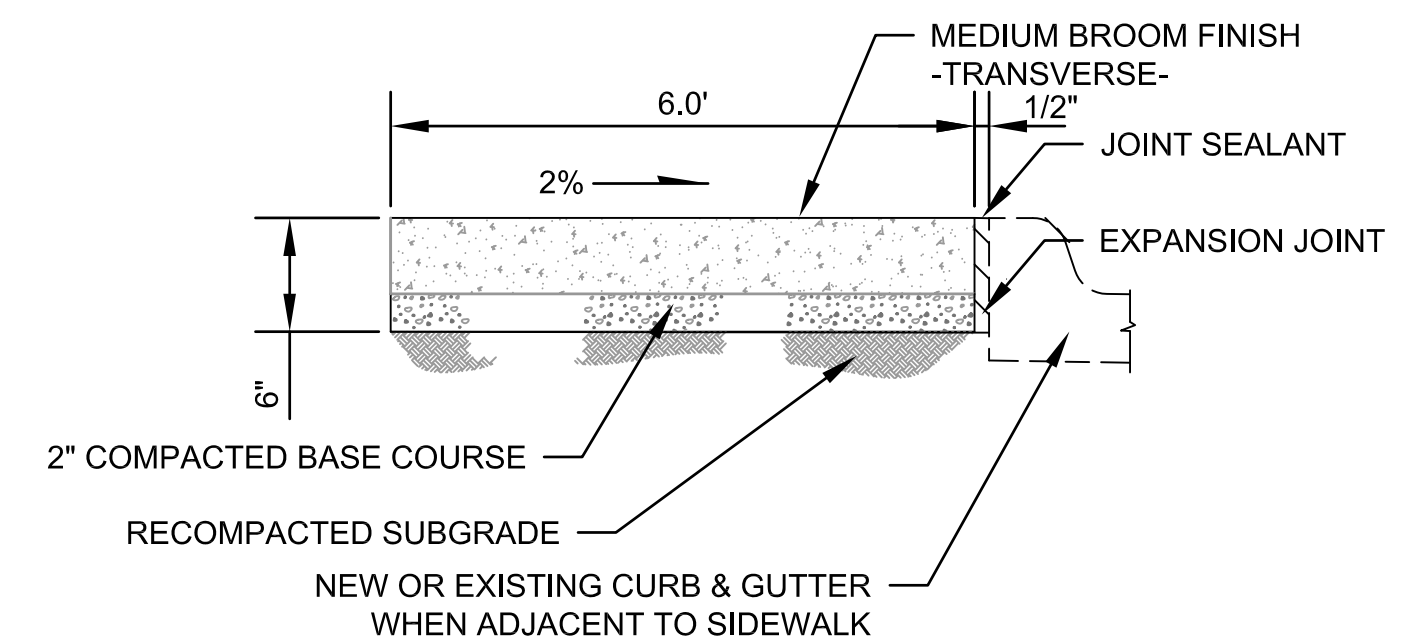
C3 TAPER DETAIL
NTS



C6 STANDARD SIDEWALK
NTS



C4 6" REINFORCED CONCRETE PAD
NTS



DATE	APPR.
DATE	DESCRIPTION
DATE	MARK

DATE: 08-15-2017	CONTRACT NO.: W9129F-15-0-0018
DESIGNED BY: SHANE MATT	FILE NUMBER: AR851-10-01
DRAWN BY: SMATT	FILE NAME: Q:\P\11-0144-C-501-C-807.DWG
CHECKED BY: KMM	SIZE: 34X22
DESIGNED BY: SHANE MATT	U.S. ARMY CORPS OF ENGINEERS
DRAWN BY: SMATT	OMAHA DISTRICT
CHECKED BY: KMM	OMAHA NEBRASKA
DATE: 08-15-2017	CONTRACT NO.: W9129F-15-0-0018
DESIGNED BY: SHANE MATT	FILE NUMBER: AR851-10-01
DRAWN BY: SMATT	FILE NAME: Q:\P\11-0144-C-501-C-807.DWG
CHECKED BY: KMM	SIZE: 34X22
DESIGNED BY: SHANE MATT	U.S. ARMY CORPS OF ENGINEERS
DRAWN BY: SMATT	OMAHA DISTRICT
CHECKED BY: KMM	OMAHA NEBRASKA
DATE: 08-15-2017	CONTRACT NO.: W9129F-15-0-0018
DESIGNED BY: SHANE MATT	FILE NUMBER: AR851-10-01
DRAWN BY: SMATT	FILE NAME: Q:\P\11-0144-C-501-C-807.DWG
CHECKED BY: KMM	SIZE: 34X22

REPAIR BOMBER BOULEVARD	MINOT AFB
DESIGNED BY: SHANE MATT	U.S. ARMY CORPS OF ENGINEERS
DRAWN BY: SMATT	OMAHA DISTRICT
CHECKED BY: KMM	OMAHA NEBRASKA
DATE: 08-15-2017	CONTRACT NO.: W9129F-15-0-0018
DESIGNED BY: SHANE MATT	FILE NUMBER: AR851-10-01
DRAWN BY: SMATT	FILE NAME: Q:\P\11-0144-C-501-C-807.DWG
CHECKED BY: KMM	SIZE: 34X22

THIS DOCUMENT WAS ORIGINALLY ISSUED AND SEALED BY SHANE A. MATT, REGISTERED PROFESSIONAL ENGINEER IN SOUTH DAKOTA, LICENSE # 7899, ON 02/14. THIS MEDIA SHOULD NOT BE CONSIDERED A CERTIFIED DOCUMENT.

SHEET IDENTIFICATION
C-501
SHEET 136 OF 142