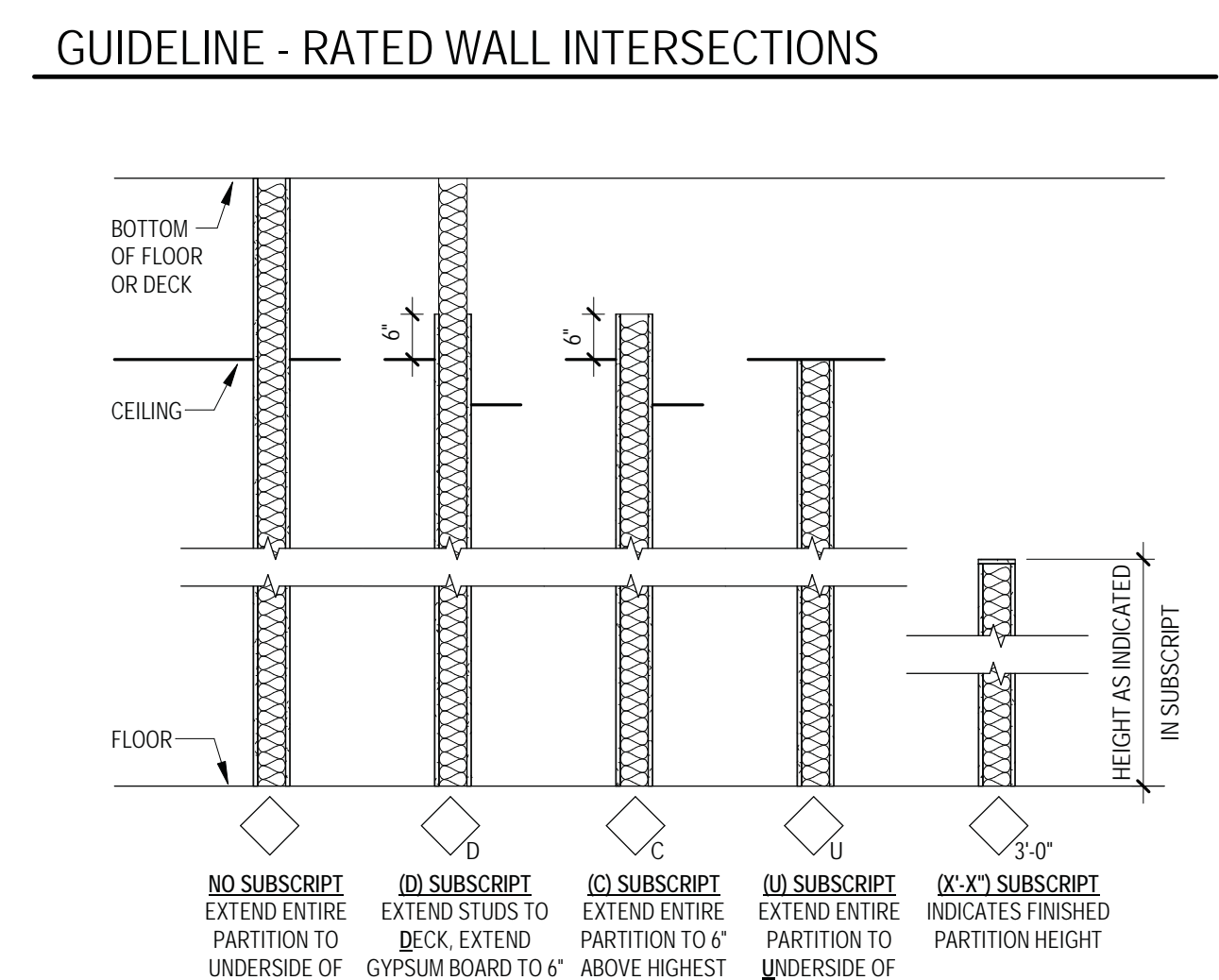
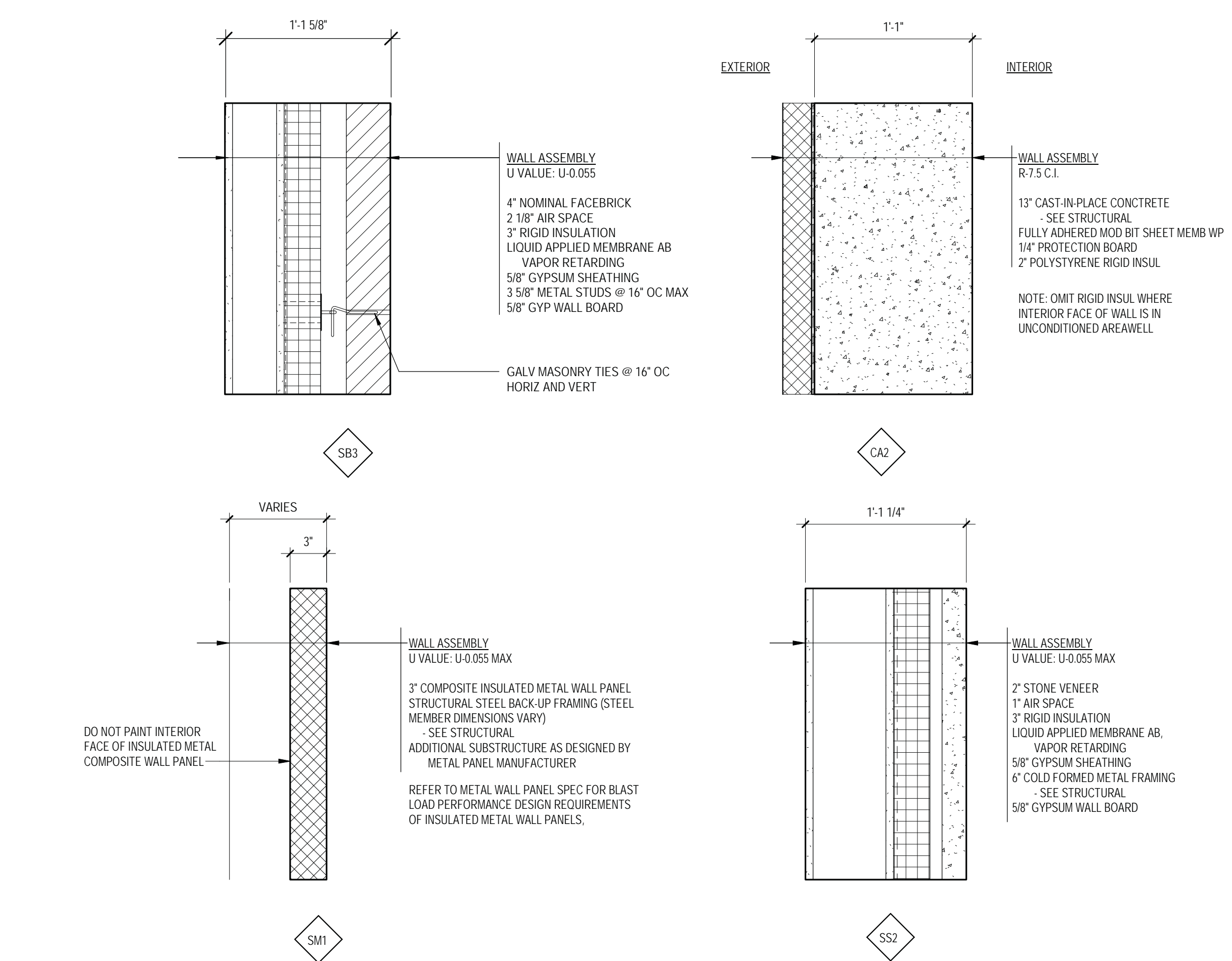


- PARTITION GENERAL NOTES:**
- SEE CODE PLANS FOR REQUIRED PARTITION FIRE RATINGS.
 - GYPSON BOARD AND METAL STUDS USED IN FIRE RATED SEPARATION PARTITIONS SHALL EXTEND FROM FLOOR TO UNDERSIDE OF STRUCTURE, UNLESS NOTED OTHERWISE.
 - WHERE SMOKE PARTITIONS ARE REQUIRED BY CODE PLANS, THE FOLLOWING APPLIES TO ALL ACoustICAL TYPE SMOKE PARTITIONS: EXTEND GYPSON BOARD ON BOTH SIDES TO STRUCTURE ABOVE, SEAL TOP AND BOTTOM OF PARTITION AND ALL PENETRATIONS THROUGH THE PARTITION ON THE CORRIDOR SIDE WITH A SMOKE SEALANT HAVING A MINIMUM WARM SMOKE TEMPERATURE RATING OF 400 DEGREES F AND NET I.T. PROVIDE REQUIRED ACOUSTIC SEALANT ON ROOM SIDE AT TOP AND BOTTOM OF PARTITION AND ALL PENETRATIONS THROUGH PARTITION.
 - CONTRACTORS TO VERIFY CONDITIONS ABOVE CEILING AT EXISTING PARTITIONS IDENTIFIED WITH FIRE/SMOKE PARTITION SYMBOLS. REPAIR CONDITIONS THAT DO NOT MEET REQUIREMENTS OF THE INDICATED FIRE/SMOKE RATING SHOWN, SUCH AS BUT NOT LIMITED TO OPENINGS IN PARTITIONS, GAPS AROUND DUCTWORK, PIPES AND CONDUIT, MISSING SMOKE DAMPERS, ETC.
 - DIMENSIONS TO METAL STUD PARTITION ARE MEASURED TO FINISH FACE OF PARTITION UNLESS NOTED OTHERWISE.
 - THE DIMENSION SHOWING THE LOCATION OF A DOOR FRAME IN GYPSON BOARD WALLS IS TO THE INSIDE OF THE DOOR FRAME (DOOR OPENING). PROVIDE 4" TYPICAL DIMENSION IF NO DIMENSION IS SHOWN.
 - SOUND ATTENUATING INSULATION MEANS GLASS FIBER OR MINERAL WOOL BATTS OR BLANKETS BEARING THE UL LABEL FOR FIRE RESISTANCE. VERIFY TYPE AND DENSITY (PCF) WITH FIRE TEST NUMBER SHOWN ON PARTITION TYPE.
 - FOR PARTITION HEIGHTS SEE PARTITION TAG LEGEND AND TAG SUBSCRIPTS ON PLANS.
 - ALL FURRING TO BE PARTITION TYPE XN3. ALL PARTITIONS ARE TO BE PARTITION TYPE B3, UNLESS NOTED OTHERWISE.
 - FOR PARTITION TYPES WITH GYPSON BOARD ON ONE SIDE ONLY, INSTALL GYPSON BOARD ON ROOM SIDE, UNLESS NOTED OR DETAILED OTHERWISE. FOR SHAFT WALL PARTITION TYPES, INSTALL LINER PANEL ON NON-ACCESSIBLE SIDE, UNLESS NOTED OR DETAILED OTHERWISE.
 - PROVIDE 1/2" DEFLECTION SPACE AT THE TOP OF STUDS AT ALL PARTITIONS EXTENDING TO STRUCTURE, UNLESS NOTED OTHERWISE.
 - WHEN GYPSON BOARD PARTITIONS ARE LOCATED BELOW STRUCTURE THAT HAS A VERTICAL DEFLECTION MOVEMENT MORE THAN 1/2", PROVIDE PARTITION HEADS WITH VERTICAL MOVEMENT CAPABILITY TO MATCH THAT DEGREE OF MOVEMENT. MAINTAIN THE REQUIRED FIRE RATING OF FIRE RATED PARTITIONS FROM FLOOR TO STRUCTURE ABOVE WITH FIRE TESTED HEAD CONSTRUCTION.
 - WHEN PARTITION FRAMING RUNS HIGHER THAN 12" ABOVE FINISH FLOOR, BRACE PARTITION BACK TO STRUCTURE ABOVE WITH METAL STUDS EVERY 4' ON CENTER MINIMUM.
 - BULKHEAD FRAMING SHALL EXTEND TO UNDERSIDE OF STRUCTURE WITH DIAGONAL STUD BRACING BRACES AT 4' ON CENTER (2 BRACES MINIMUM) WITH GYPSON BOARD EXTENDING 6" ABOVE CEILING MINIMUM, UNLESS NOTED OTHERWISE.
 - GENERAL CONTRACTOR SHALL PROVIDE AND COORDINATE ALL IN-WALL BLOCKING FOR WALL MOUNTED CASEWORK AND EQUIPMENT SUPPLIED BY THE CONTRACTOR, OWNER FURNISHED OR BY VENDORS. CONTRACTORS OPTION TO PROVIDE 3/4" FIRE TREATED PLYWOOD (PRESSURIZED) TREATED ON EXTERIOR WALLS OR SHEET METAL BLOCKING FOR WALL MOUNTED EQUIPMENT, CASEWORK, DOOR STOPS, ACCESSORIES, ETC., UNLESS NOTED OTHERWISE.
 - IN WET AREAS SUCH AS SOILED UTILITY ROOMS, JANITOR CLOSETS, ETC., USE 5/8" WATER RESISTANT GYPSON BOARD OR 5/8" FR WATER RESISTANT GYPSON BOARD.
 - FOR ALL REMODELING PROJECTS, ALL PARTITIONS NOTED AT INFILLS WITHIN OR EXTENSIONS ONTO EXISTING PARTITIONS, ARE NOTED AS SUCH FOR INTENT ONLY. ALL EXPOSED PARTITION FACES ARE TO ALIGN.



- GENERAL NOTES:**
- FOR PARTITIONS WITH UNEQUAL LAYERS OF GYPSON BOARD ON EACH SIDE, THE SIDE OF THE PARTITION WITH THE TAG INDICATES WHERE THE EXTRA LAYERS OF GYPSON BOARD ARE TO BE INSTALLED. REFER TO PARTITION TYPES FOR MORE INFORMATION.
 - AT INFILL WITHIN OR EXTENSIONS ONTO EXISTING PARTITIONS, THE PARTITION TAG NOTED IS FOR INTENT ONLY. FINISHED PARTITION FACES ARE TO ALIGN WITH ADJACENT EXISTING PARTITION FACES.
 - SUBSCRIPTS MAY BE USED WITH ANY PARTITION TYPE.

TYPES - PARTITION

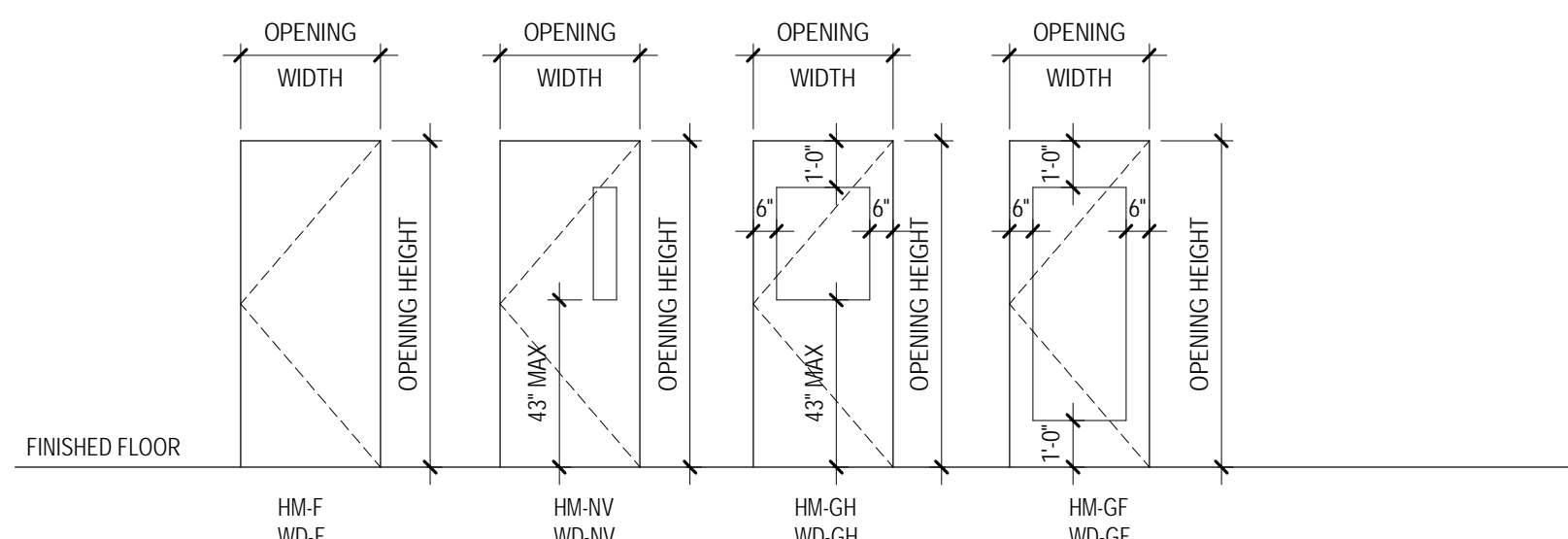


TYPES - WALL

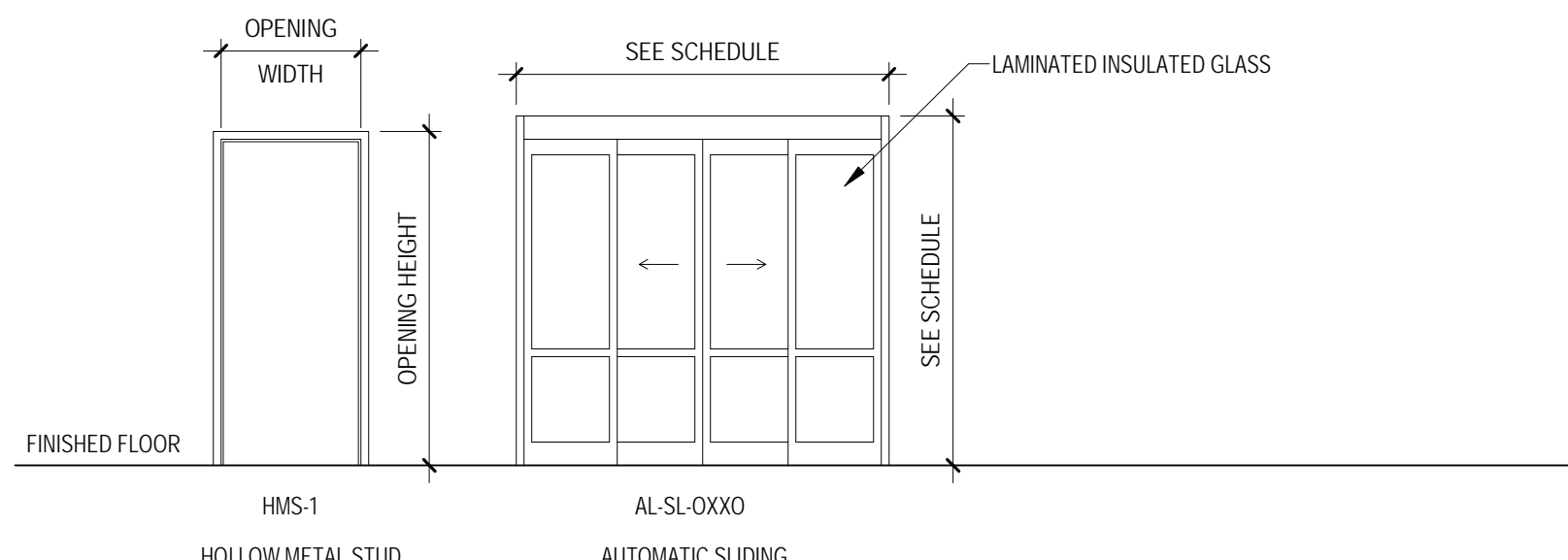
BID SET

Revisions: _____ Date: _____	CONSULTANT 	ARCHITECT/ENGINEER OF RECORD 13605 1st Ave. N. #300 Plymouth, MN 55441 P 763.412.4000 F 763.412.4090 ae-mn.com Anderson Engineering of Minnesota, LLC Proj # 15744	I. THOMAS OLESAK, AM THE COORDINATING PROFESSIONAL ON THE CONSTRUCT AIR HANDLING TOWER PROJECT. 	Office of Construction and Facilities Management U.S. Department of Veterans Affairs	Drawing Title CONSTRUCTION TYPES AND DETAILS Approved: _____	Phase 100% CONSTRUCTION DOCUMENTS FULLY SPRINKLERED	Project Title NWIHCS - CONSTRUCT AIR HANDLING TOWER	Project Number 636-18-303 Building Number 1 Drawing Number AE601
	Location OMAHA, NE Issue Date 05/28/21 Checked LA Drawn CM							

OPENING SCHEDULE													
ROOM NAME	NUMBER	OPENING		PANEL INFORMATION			FRAME INFORMATION				COMMENTS		
		WIDTH	HEIGHT	2ND PANEL TYPE	PANEL TYPE	PANEL GLAZING	FRAME TYPE	JAMB DETAIL	HEAD DETAIL	SILL DETAIL		HW GROUP	
FUTURE MECHANICAL CORRIDOR	1104A	3'-6"	7'-0"	WD-F	AL-G2	LAMINATED	HMS-1	2/AE602	1/AE602	1/AE602	HW-SJ	45	IMPACT RESISTANT
FUTURE MECHANICAL	1104B	8'-6"	7'-0"	WD-F	AL-G2	LAMINATED	HMS-1	2/AE602	1/AE602	1/AE602	HW-SJ	45	
FUTURE MECHANICAL	1104C	3'-6"	7'-0"	WD-F	NONE	NONE	HMS-1	2/AE602	1/AE602	5/AE602	HW-SJ	45	
FUTURE MECHANICAL	2090A	3'-0"	7'-0"	WD-F	NONE	NONE	HMS-1	2/AE602	1/AE602	1/AE602	HW-SJ	45	
EXIST STORAGE	3063C	3'-0"	7'-0"	WD-F	NONE	NONE	HMS-1	2/AE602	1/AE602	1/AE602	HW-SJ	45	
EXIST STORAGE	3063D	3'-0"	7'-0"	WD-F	NONE	NONE	HMS-1	2/AE602	1/AE602	1/AE602	HW-SJ	45	
FUTURE MECHANICAL	3064A	3'-6"	7'-0"	WD-F	NONE	NONE	HMS-1	10/AE602	1/AE602	13/AE602	HW-SJ	45	
FUTURE MECHANICAL	3064B	3'-6"	7'-0"	WD-F	NONE	NONE	HMS-1	2/AE602	1/AE602	5/AE602	HW-SJ	45	
FUTURE MECHANICAL	4087A	3'-0"	7'-0"	WD-F	NONE	NONE	HMS-1	2/AE602	1/AE602	7/AE602	HW-SJ	45	
FUTURE MECHANICAL	5012A	3'-0"	7'-0"	WD-F	NONE	NONE	HMS-1	2/AE602	1/AE602	7/AE602	HW-SJ	45	
FUTURE MECHANICAL	6012A	3'-0"	7'-0"	WD-F	NONE	NONE	HMS-1	2/AE602	1/AE602	7/AE602	HW-SJ	45	
FUTURE MECHANICAL	7012A	3'-0"	7'-0"	WD-F	NONE	NONE	HMS-1	2/AE602	1/AE602	7/AE602	HW-SJ	45	
EXIST LOBBY	8012A	3'-0"	5'-0"	HMF	NONE	NONE	HMS-1	9/AE602	4/AE602	11/AE602	HW-EA	45	
FUTURE MECHANICAL	8092A	4'-0"	7'-0"	WD-F	NONE	NONE	HMS-1	8/AE602	3/AE602	11/AE602	HW-SJ	180	
FUTURE MECHANICAL	8092B	4'-0"	7'-0"	WD-F	NONE	NONE	HMS-1	8/AE602	3/AE602	12/AE602	HW-SJ	180	



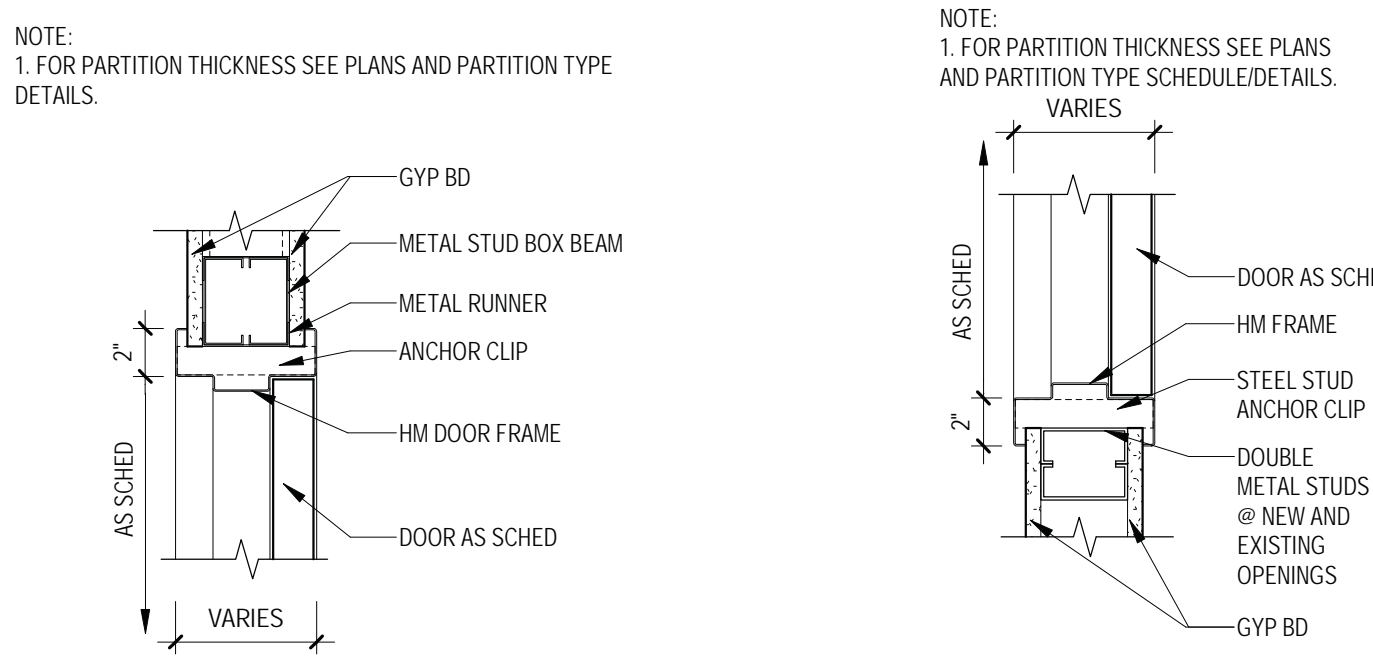
TYPES - PANELS



TYPES - DOOR FRAMES AND ASSEMBLIES

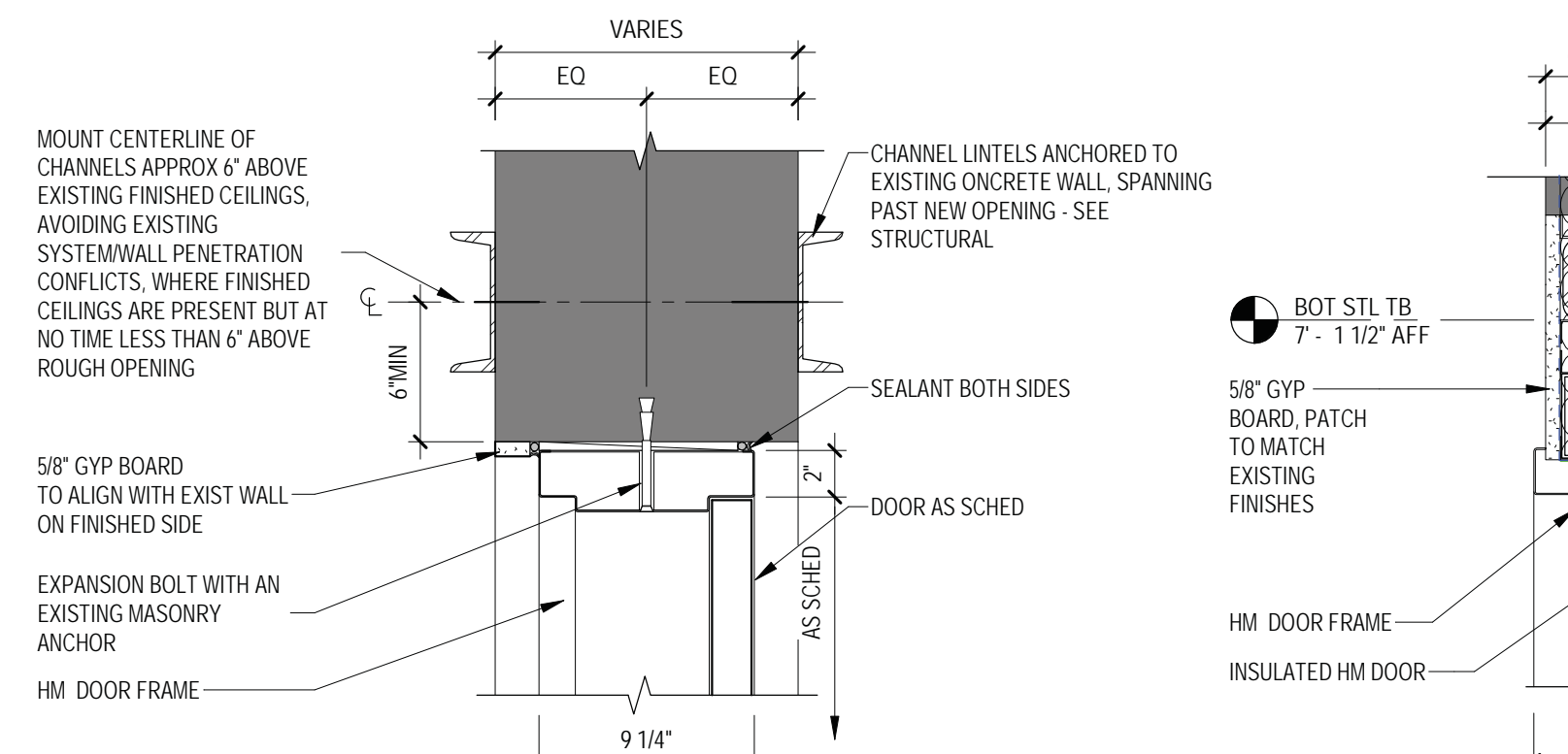
DOOR PANEL NAMING		
PANEL PREFIXES	PANEL SUFFIXES	
AL - ALUMINUM CG - COILING GRILLE BF - BIFOLD BG - BIFOLD GLASS D - DUTCH HM - HOLLOW METAL OS - OVERHEAD SECTIONAL RD3 - REVOLVING DOOR 3 PANEL RD4 - REVOLVING DOOR 4 PANEL VL - VERTICAL LIFT WB - WOOD	AG - ALL GLASS NF - NARROW VISION NV2 - NARROW VISION 2 LIGHT NV3 - NARROW VISION 3 LIGHT NV4 - NARROW VISION 4 LIGHT DS - DUTCH GLASS G2 - GLASS 2 LIGHT G3 - GLASS 3 LIGHT GF - GLASS FULL GH - GLASS HALF LF - LOUVER FULL LGH - LOUVER GLASS HALF LH - LOUVER HALF	LNW - LOUVER NARROW VISION NV - NARROW VISION NV2 - NARROW VISION 2 LIGHT NV3 - NARROW VISION 3 LIGHT NV4 - NARROW VISION 4 LIGHT RP2 - RAISED PANEL 2 PANEL RP4 - RAISED PANEL 4 PANEL RP6 - RAISED PANEL 6 PANEL V - VISION W - WINDOWS (1 ROW) WT - WINDOWS THROUGHOUT

DOOR FRAME NAMING		
FRAME PREFIXES	FRAME SUFFIXES	
AL - ALUMINUM AL-BL - ALUMINUM BORROWED LIGHT AL-SL - ALUMINUM SLIDING AL-R - ALUMINUM REVOLVING CW/F - CURTAIN WALL HM-M - HOLLOW METAL MASONRY HM-BL - HMM BORROWED LIGHT HM-DE - HMM DOUBLE EGRESS HM-S - HOLLOW METAL STUD HMS-BL - HMS BORROWED LIGHT HMS-DE - HMS DOUBLE EGRESS OC - OVERHEAD COILING OS - OVERHEAD SECTIONAL VL - VERTICAL LIFT WB-L - WOOD BORROWED LIGHT WB-P - WOOD POCKET	0 - FRAMED OPENING 1 - DOOR ONLY 2 - SIDELIGHT(S) 1 SIDE 3 - SIDELIGHT(S) SIDE WHORHORIZONTAL 4 - SIDELIGHT(S) BOTH SIDES 5 - SIDELIGHT(S) BOTH SIDES WHORHORIZONTAL 6 - DOOR WITH TRANSOM 7 - DOOR WITH TRANSOM WISDELIGHT(S) 1 SIDE 8 - TRANSOM WISDELIGHT(S) 1 SIDE WHORHORIZONTAL 9 - TRANSOM WISDELIGHT(S) BOTH SIDES 10 - TRANSOM WISDELIGHT(S) BOTH SIDES WHORHORIZONTAL 11 - FULL WIDTH TRANSOM WISDELIGHT(S) 1 SIDE 1X1 - 1 LIGHT WIDE AND 1 LIGHT HIGH 2X2 - 2 LIGHTS WIDE AND 2 LIGHTS HIGH 3X3 - 3 LIGHTS WIDE AND 3 LIGHTS HIGH (NOTE: OTHER COMBINATIONS POSSIBLE)	OX - FIXED PANEL, ACTIVE PANEL, FIXED PANEL OXX - FIXED ACTIVE, ACTIVE, FIXED OXXX - FIXED ACTIVE, ACTIVE, ACTIVE, FIXED

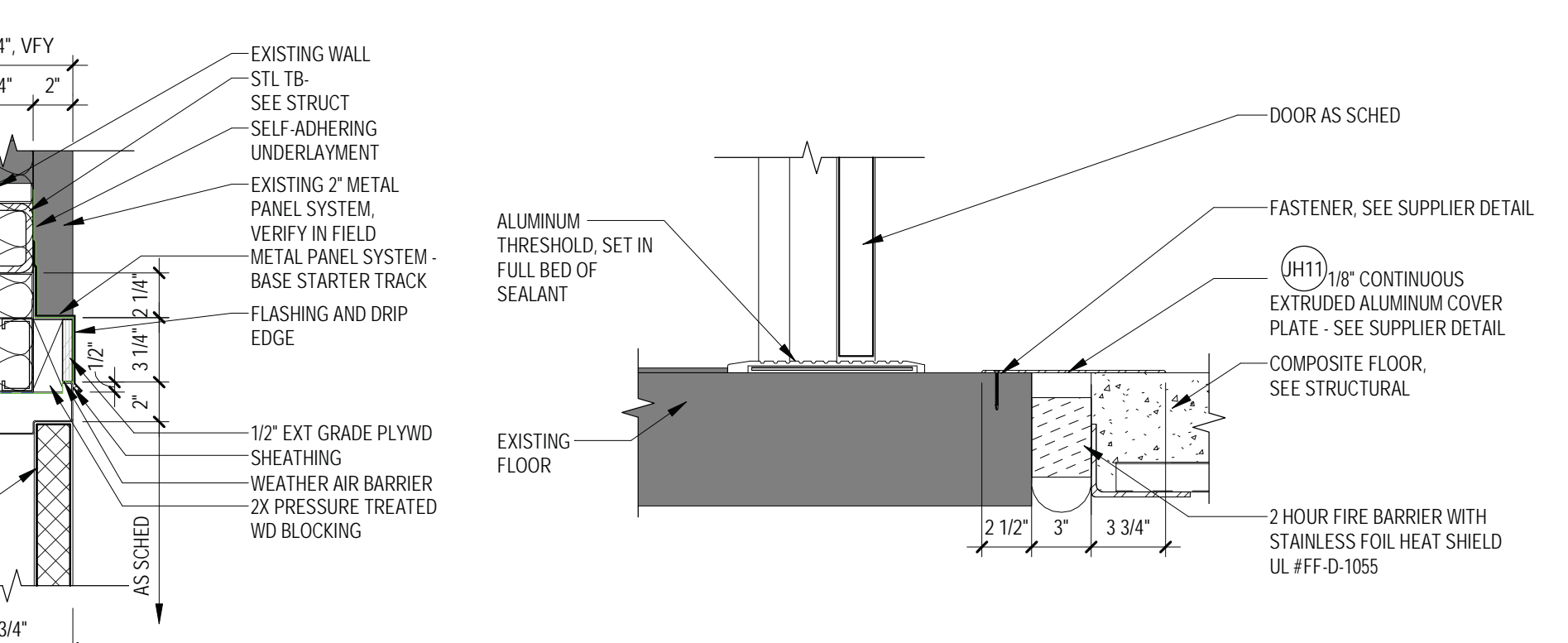


1 HM DOOR FRAME - HEAD
1 1/2" = 1'-0"

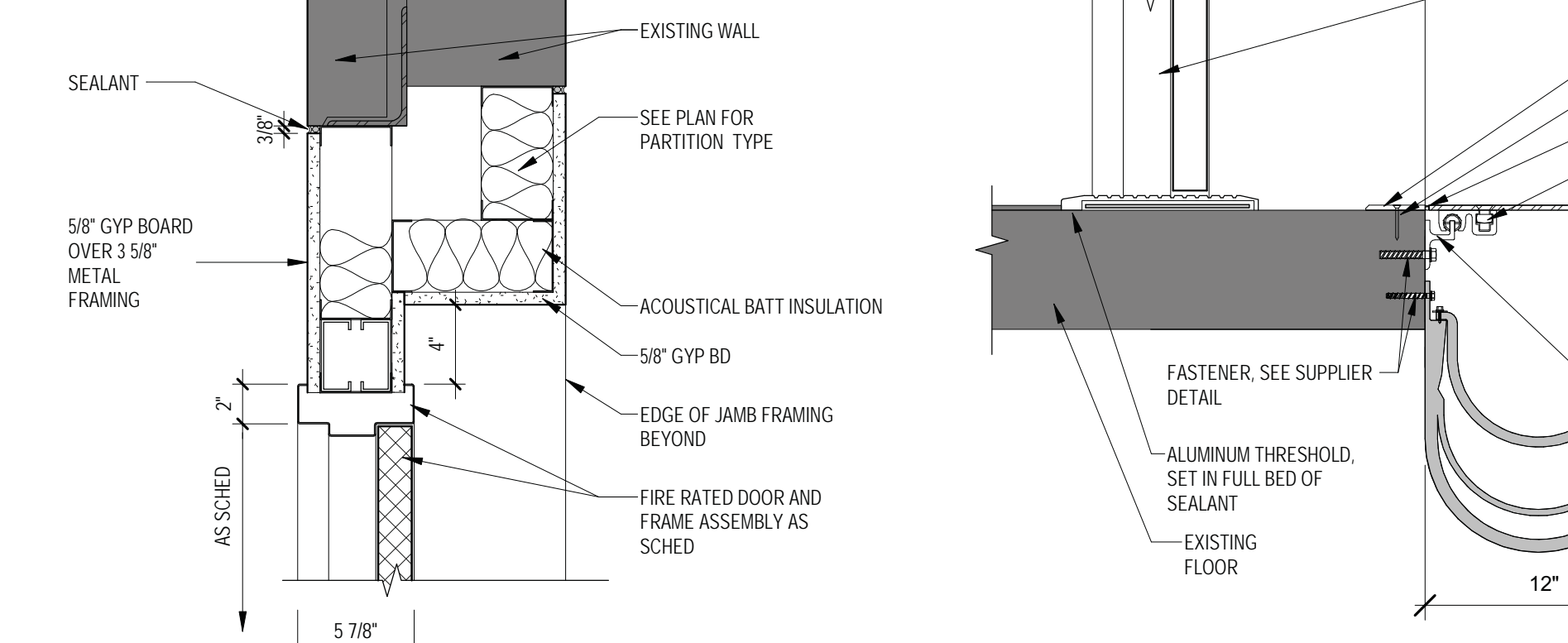
2 HM DOOR FRAME - JAMB
1 1/2" = 1'-0"



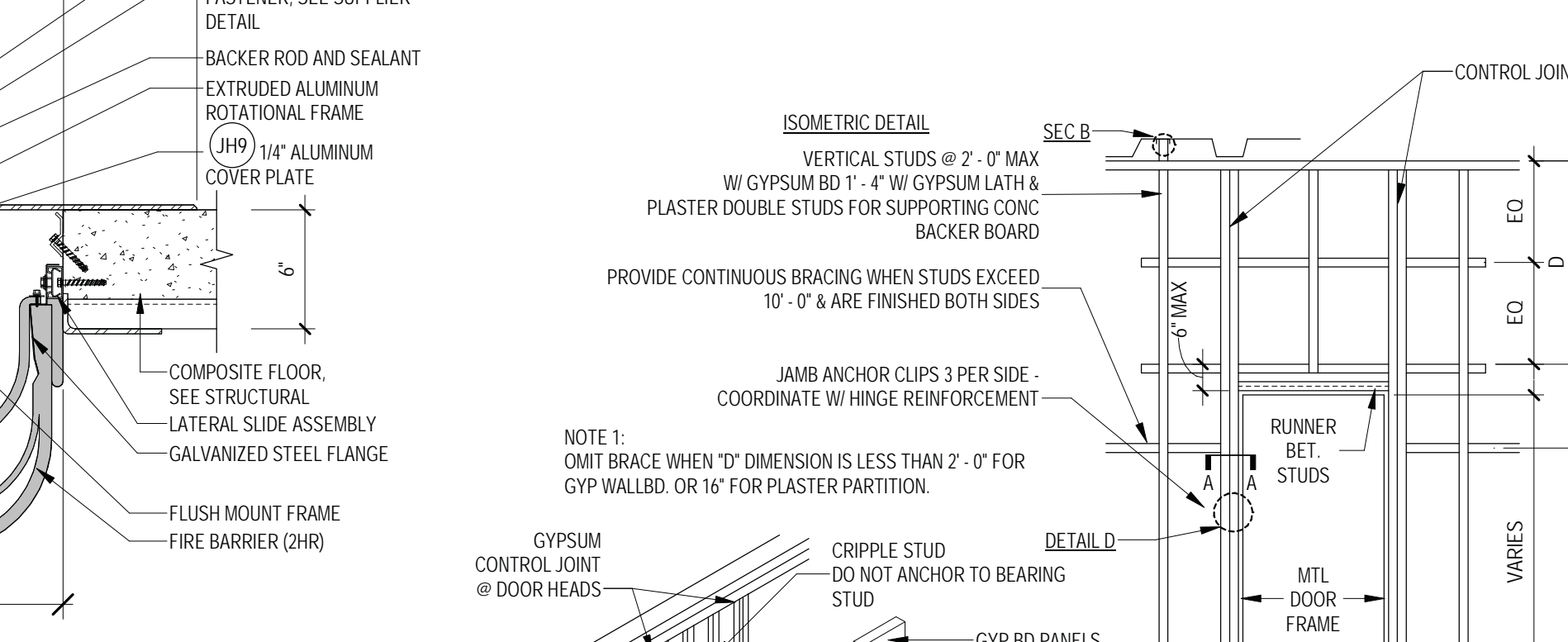
3 HM DOOR FRAME @ EXISTING CONC - HEAD
1 1/2" = 1'-0"



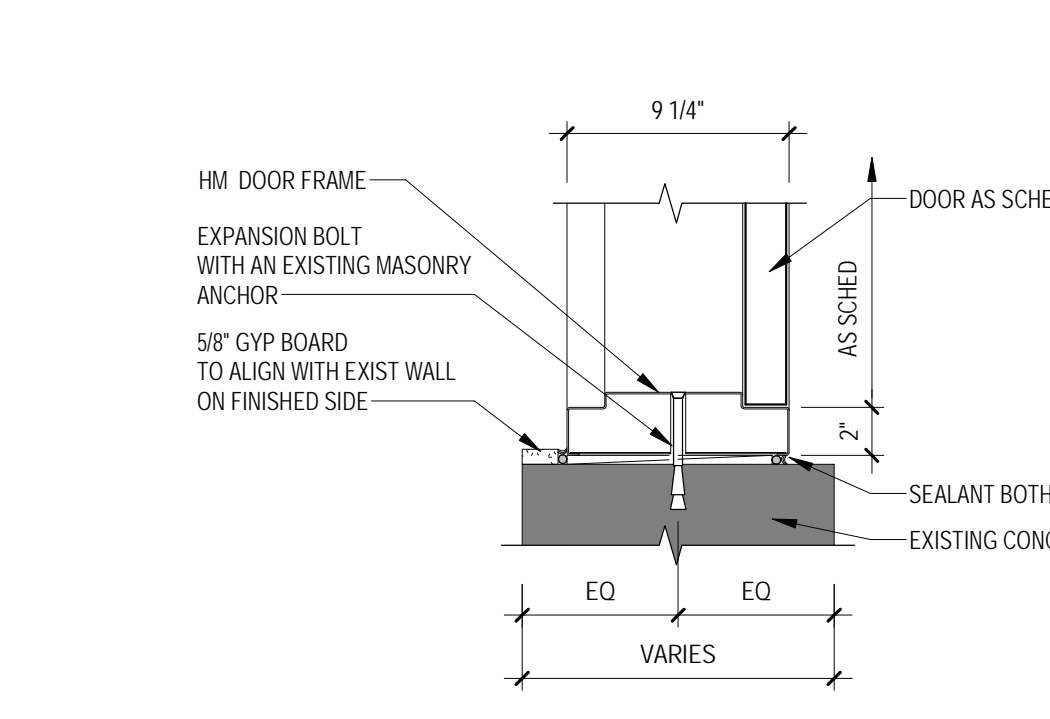
4 HM DOOR FRAME @ DOOR 8012A - HEAD
1 1/2" = 1'-0"



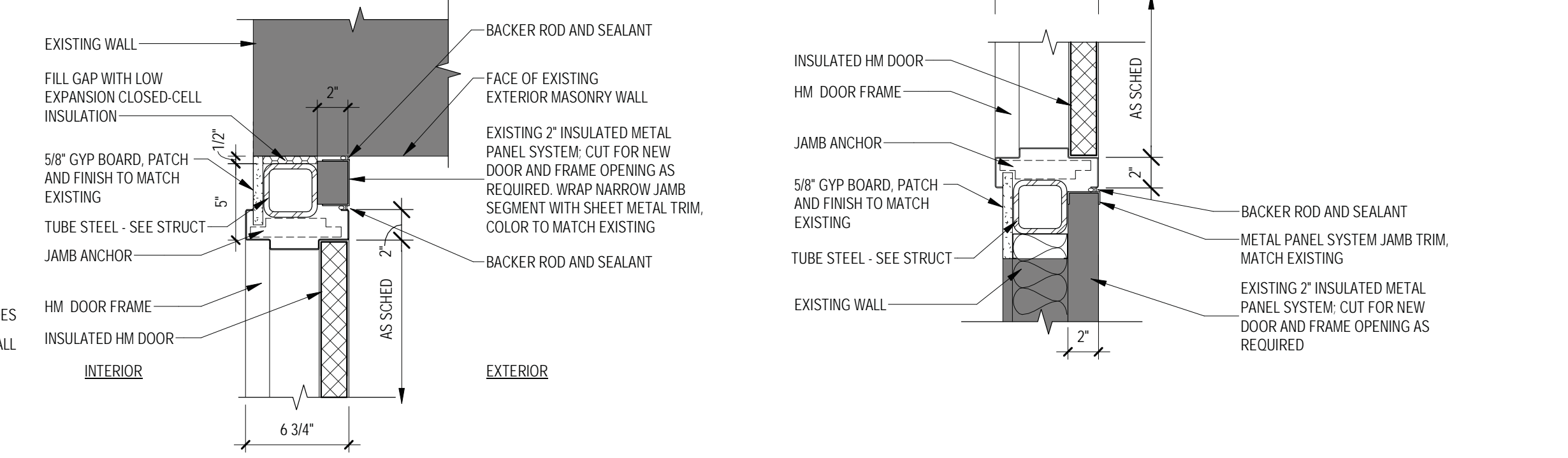
5 HM DOOR FRAME @ DOOR 2090A AND 3064B - SILL
1 1/2" = 1'-0"



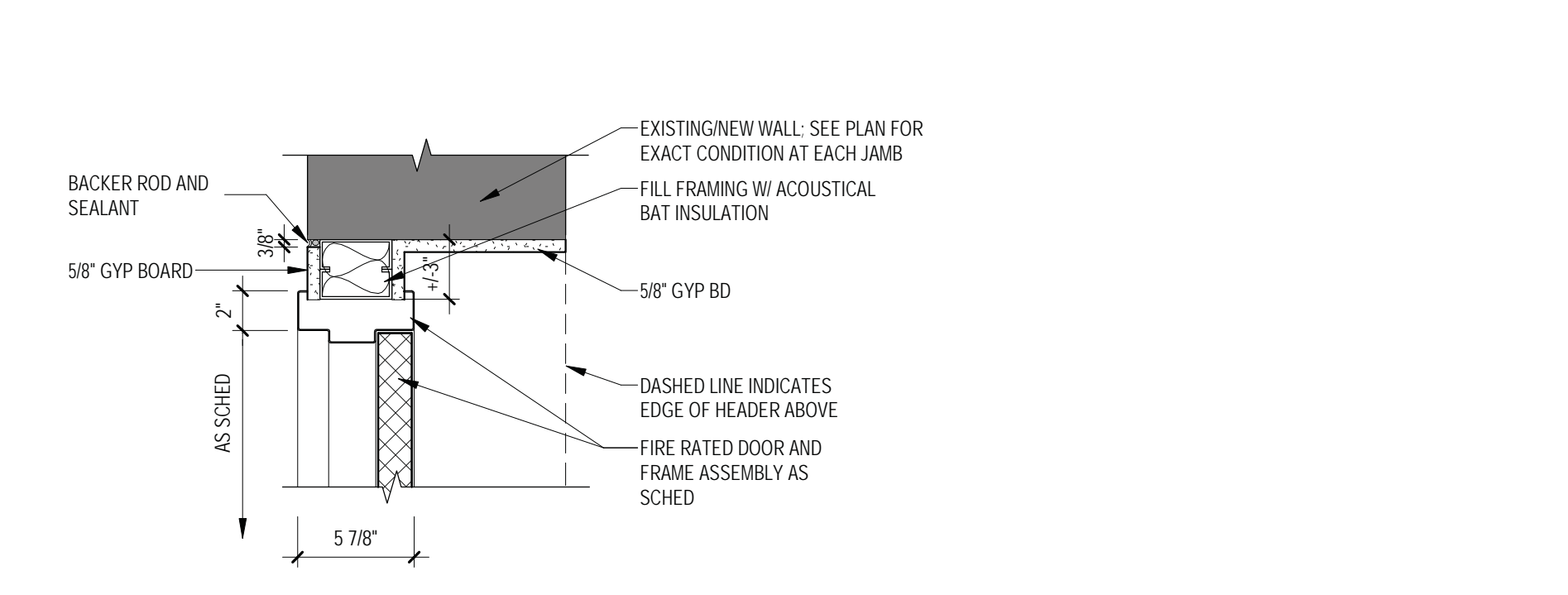
7 HM DOOR FRAME @ 12" SEISMIC JOINT - SILL
1 1/2" = 1'-0"



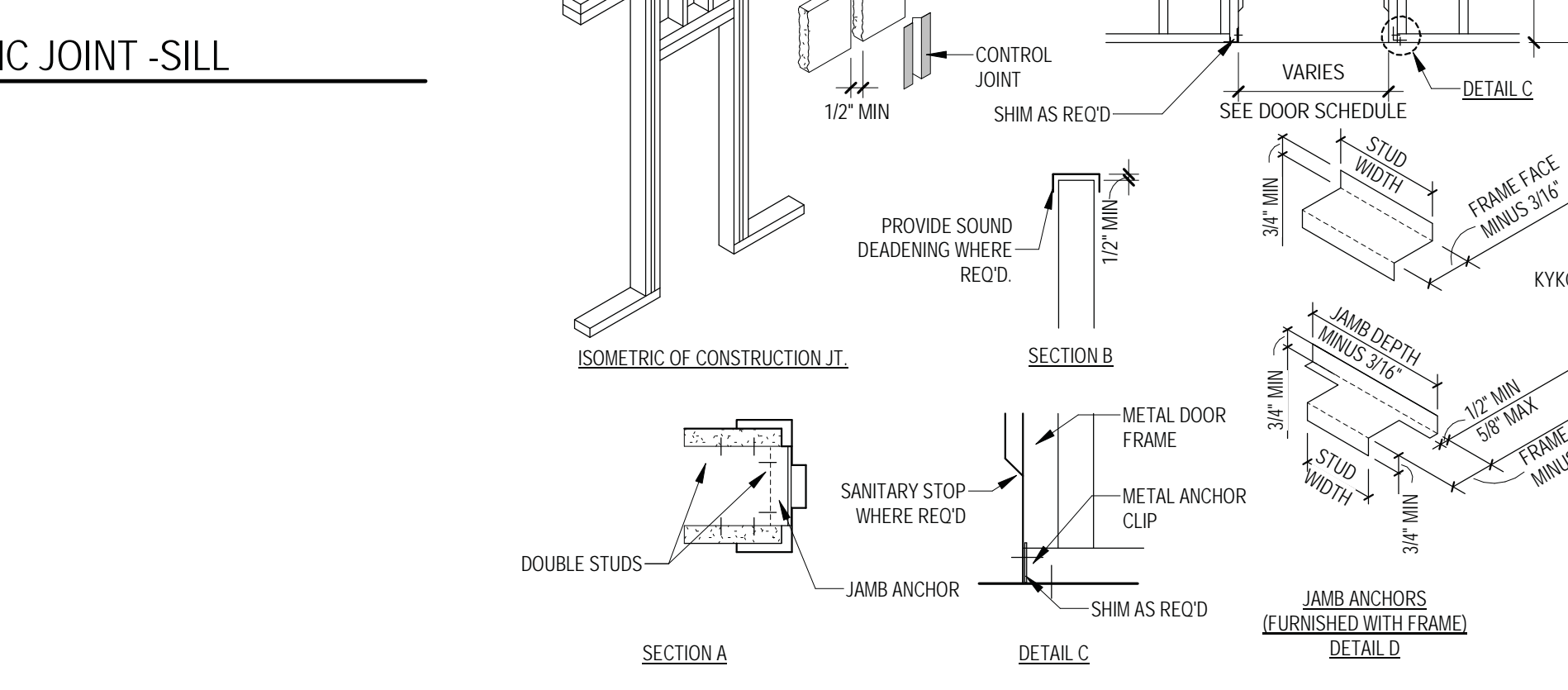
8 HM DOOR FRAME @ EXISTING CONC - JAMB
1 1/2" = 1'-0"



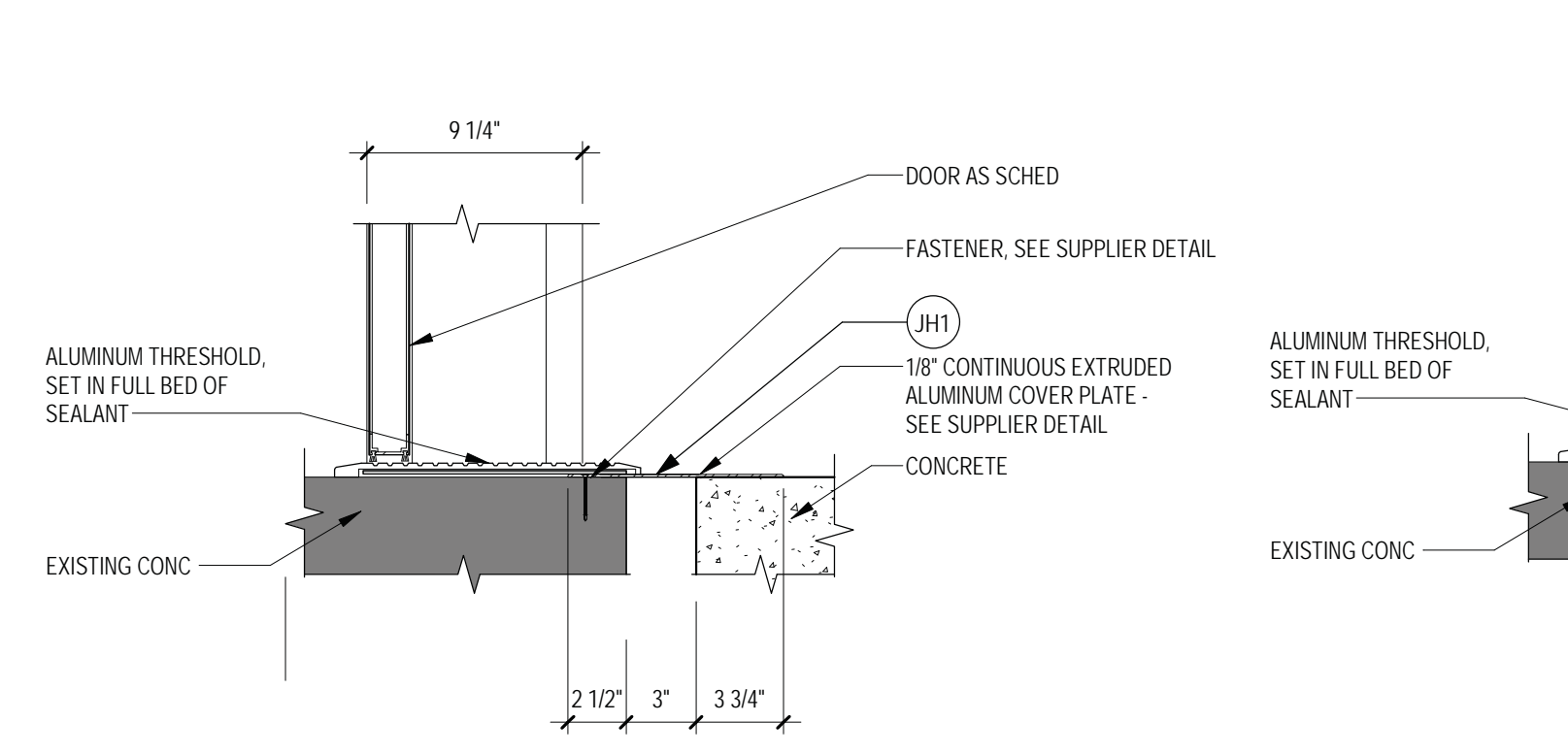
9 HM DOOR FRAME @ DOOR 8012A - JAMBS
1 1/2" = 1'-0"



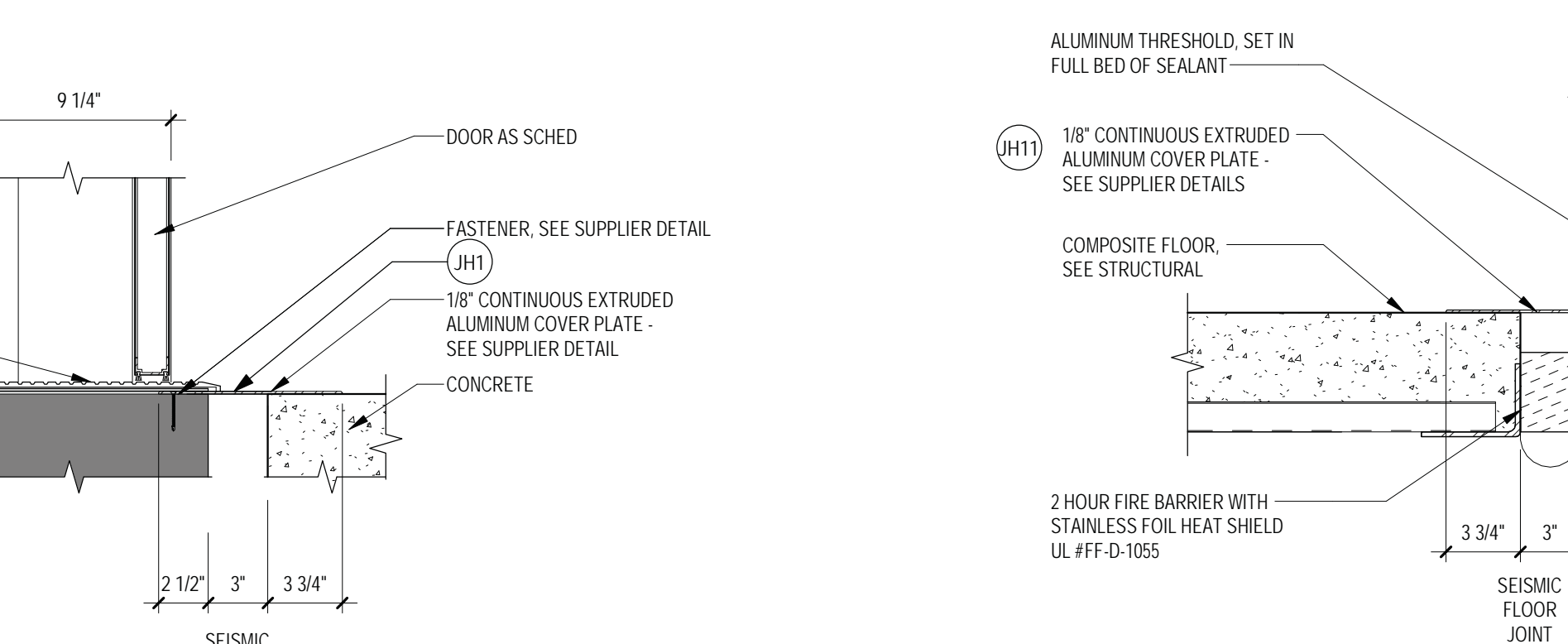
10 HM DOOR FRAME @ DOOR 3064A - JAMB
1 1/2" = 1'-0"



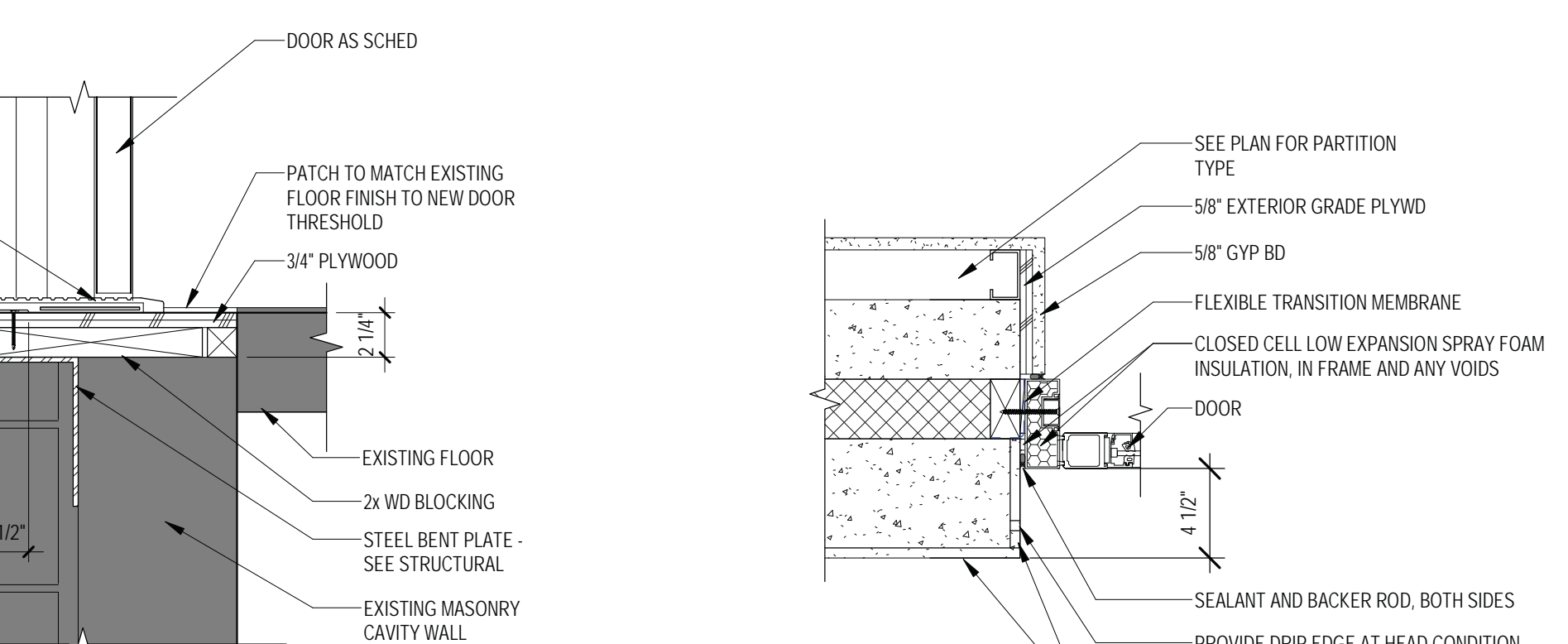
TYPICAL PARTITION CONTROL JOINT FRAMING AT DOORS



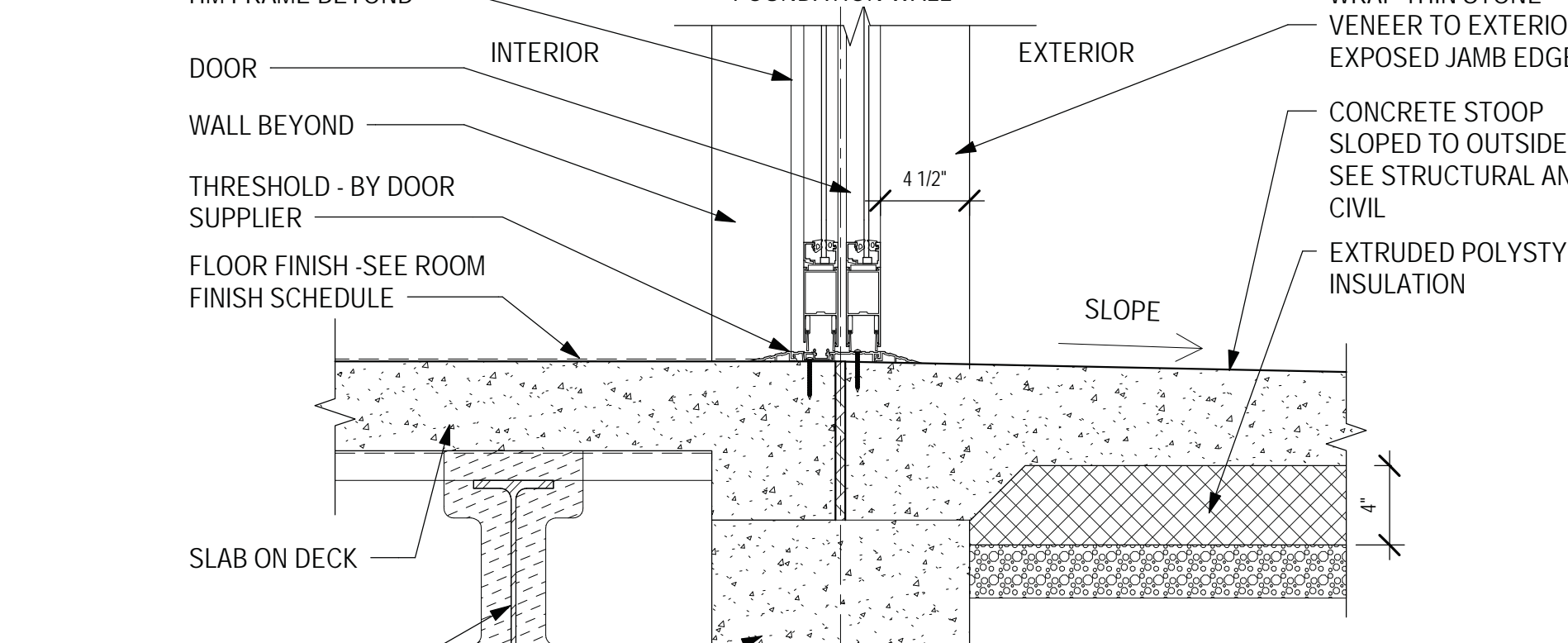
11 HM DOOR FRAME @ DOOR B092A - SILL
1 1/2" = 1'-0"



12 HM DOOR FRAME @ DOOR B092B - SILL
1 1/2" = 1'-0"



14 SLIDING DOOR JAMB (HEAD SIM) @ DOOR 1104B
1 1/2" = 1'-0"



15 SLIDING DOOR SILL @ DOOR 1104B
1 1/2" = 1'-0"

Revisions:	Date:

CONSULTANT

ARCHITECT/ENGINEER OF RECORD

13605 1st Ave. N. #100 Plymouth, MN 55441
P 763.412.4000 | F 763.412.4090 | ae-mn.com
Anderson Engineering of Minnesota, LLC | Proj # 15744

I. THOMAS OLESAK, AM THE COORDINATING PROFESSIONAL ON THE CONSTRUCT AIR HANDLING TOWER PROJECT.

Office of Construction and Facilities Management

U.S. Department of Veterans Affairs

Drawing Title
DOOR SCHEDULE AND ELEVATIONS

Approved:

Phase
100% CONSTRUCTION DOCUMENTS

FULLY SPRINKLERED

Project Title
NWIHCS - CONSTRUCT AIR HANDLING TOWER

Location
OMAHA, NE

Issue Date
05/28/21

Checked
LA

Drawn
CM

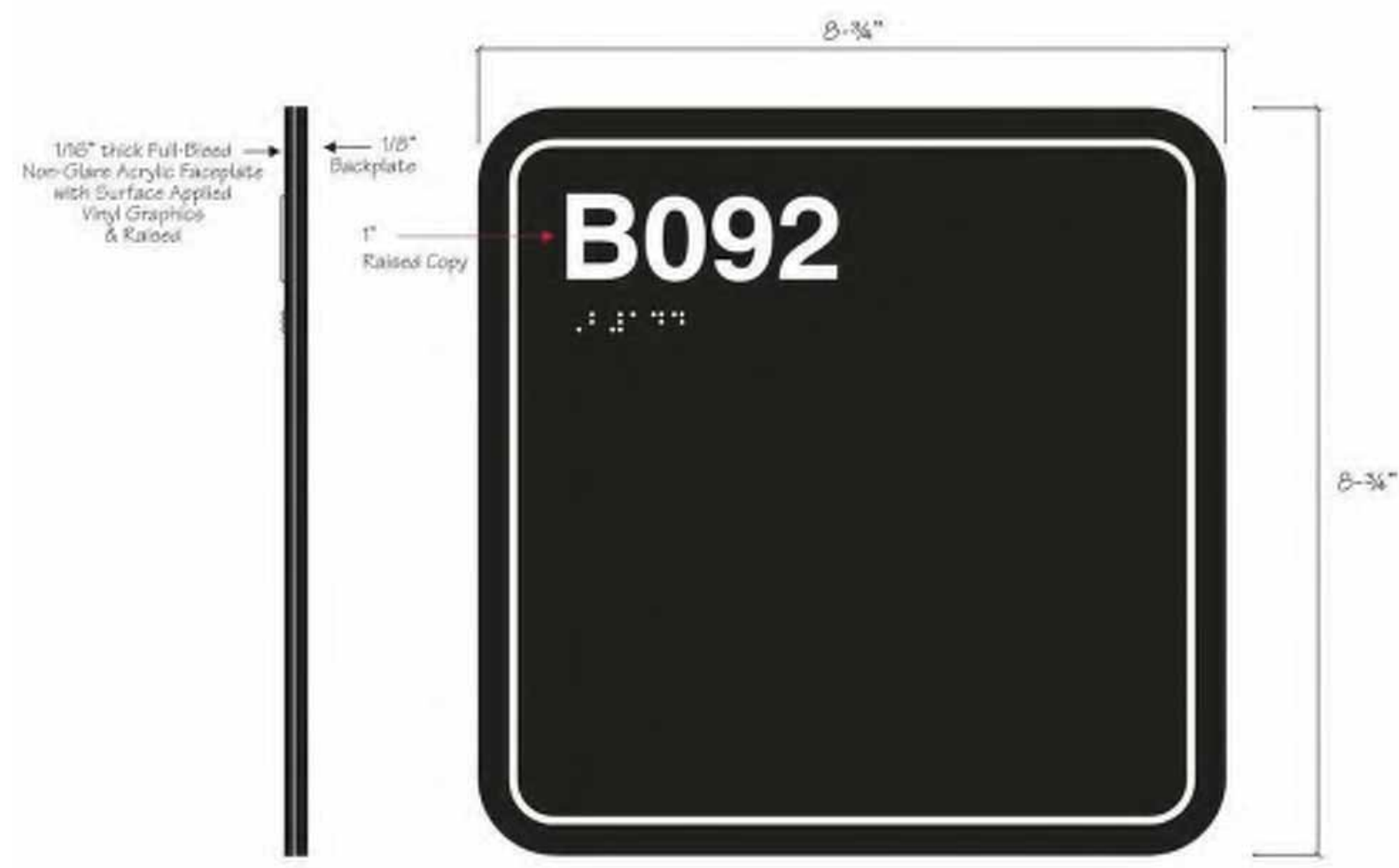
BID SET

Project Number
636-18-303

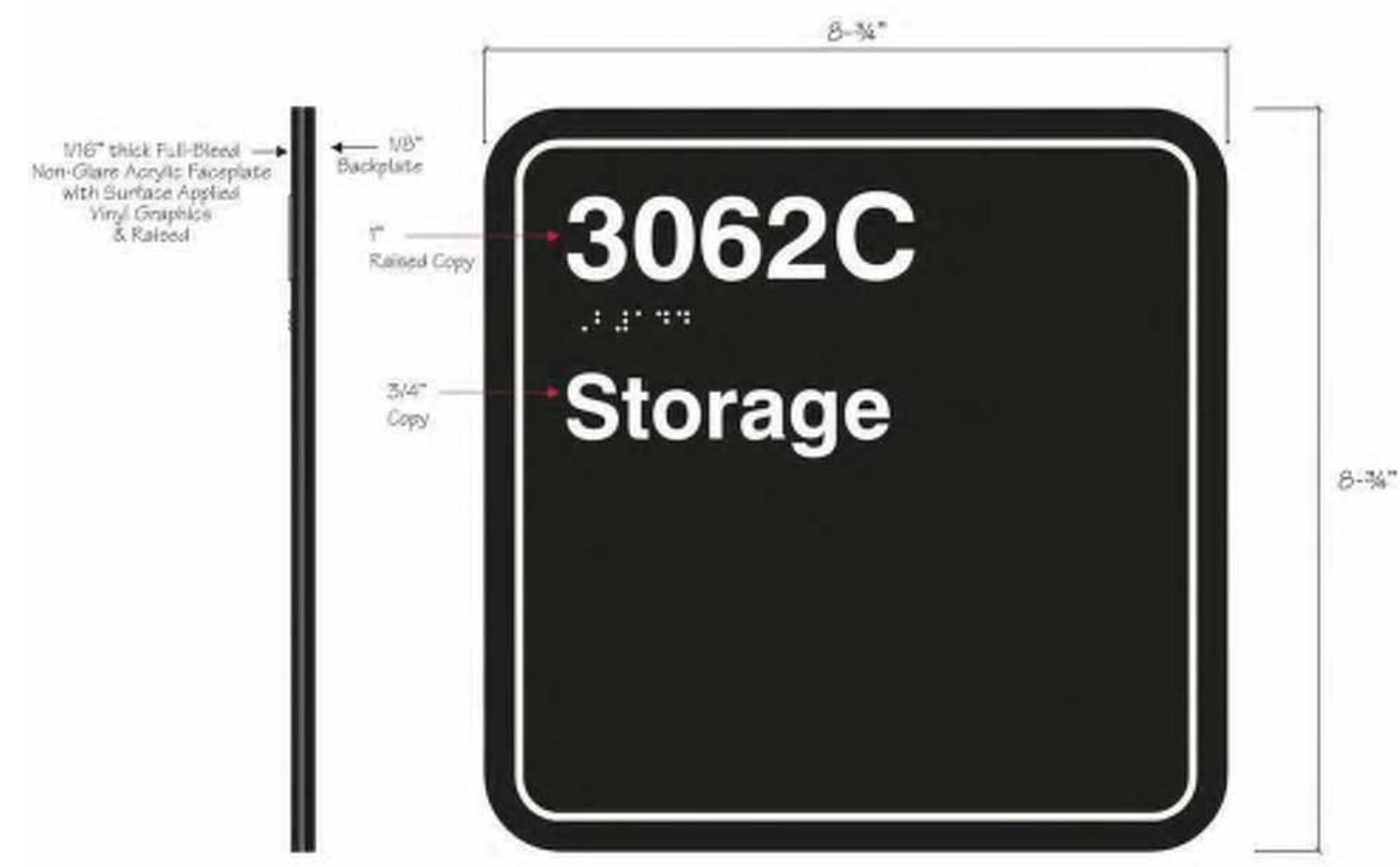
Building Number
1

Drawing Number
AE602

5/27/2021 10:26:06 AM C:\Users\Public\Documents\Revit Projects\15744-R19_juchteming@ae-mn.com.rvt



1 IN-03.01 ROOM NUMBER ID
6" - 1'-0"



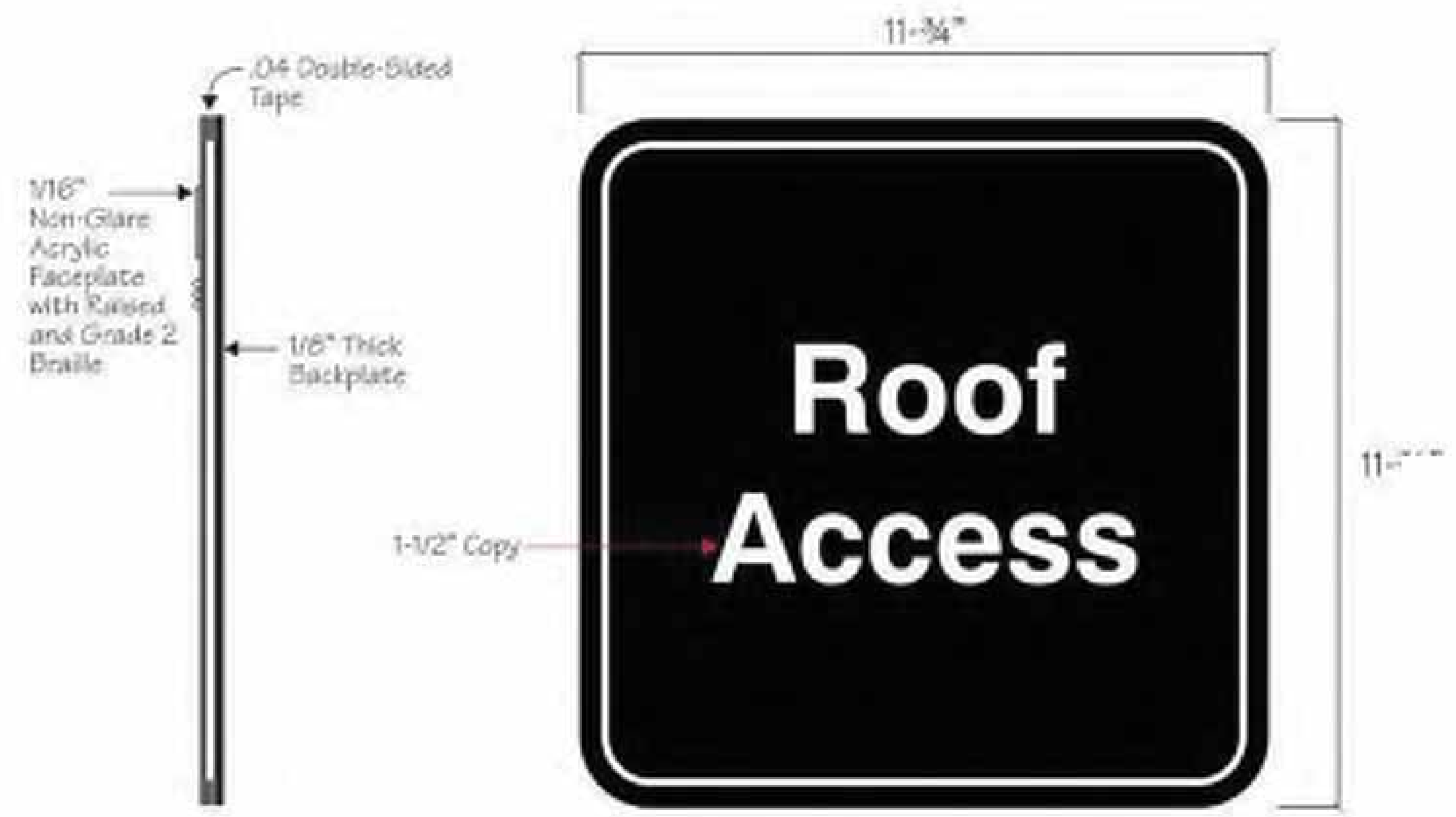
2 IN-04.01 PRIMARY ROOM ID
6" - 1'-0"

ROOM #	SIGN MESSAGE	SIGN TYPE	REMARKS
1104A		IN-03.01	
1104A		IN-03.01	
1104A	FIRE EQUIPMENT	IN-01.31	
1104B	BUILDING 1 STAFF ENTRANCE	EN-06.06	
2090A		IN-03.01	
2090A	FIRE EQUIPMENT	IN-01.31	
3062C	STORAGE	IN-04.01	
3062D	STORAGE	IN-04.01	
3064		IN-03.01	
3064		IN-03.01	
3064	FIRE EQUIPMENT	IN-01.31	
4087A		IN-03.01	
4087A	FIRE EQUIPMENT	IN-01.31	
5012A		IN-03.01	
5012A	FIRE EQUIPMENT	IN-01.31	
6012A		IN-03.01	
6012A	FIRE EQUIPMENT	IN-01.31	
7012A		IN-03.01	
7012A	FIRE EQUIPMENT	IN-01.31	
8014		IN-11.01	
8092		IN-03.01	
8092	FIRE EQUIPMENT	IN-01.31	
8092	FIRE EQUIPMENT	IN-01.31	

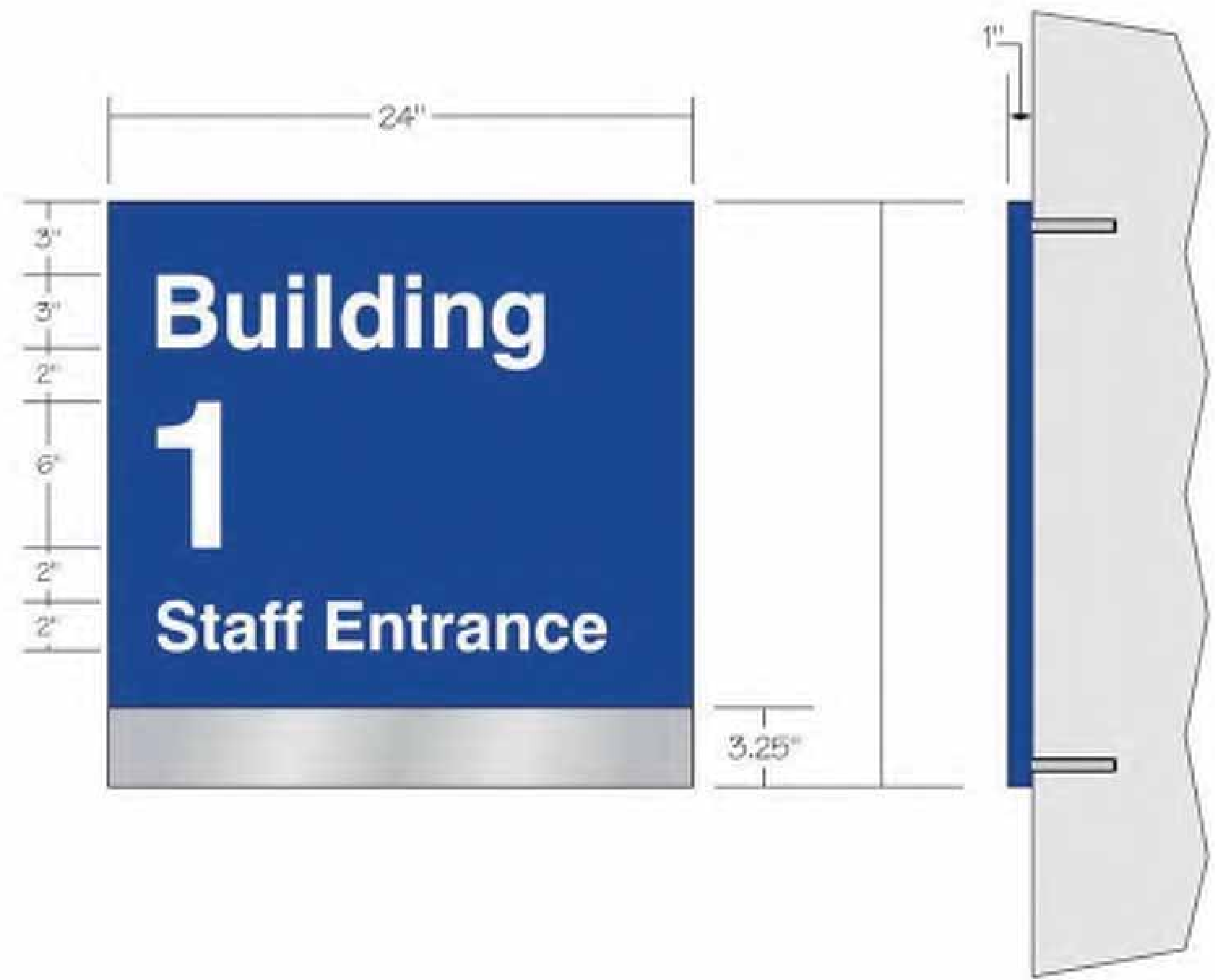
- ### SIGNAGE NOTES
1. ALL SIGNAGE IDENTIFYING PERMANENT ROOMS SHALL COMPLY WITH 2010 STANDARD FOR ACCESSIBLE DESIGN.
 2. ALL PERMANENT ROOM SIGNAGE TO HAVE TOP SECTION RAISED TEXT AND LOWER SECTION BRAILLE. BRAILLE TO BE GRADE 2, DOMED OR ROUNDED.
 3. STANDARD FONT TO BE HELVETICA BOLD, OVERHEAD SIGNS TO BE HELVETICA BOLD CONDENSED. SECONDARY LANGUAGE OF MULTILINGUAL SIGNS TO BE HELVETICA REGULAR.
 4. ALL RAISED LETTERING TO AND NUMBERING TO BE 1/32" MIN ABOVE THEIR BACKGROUND.
 5. ALL SIGNS TO BE MOUNTED ON LATCH SIDE OF DOOR. IF NO SPACE EXISTS ON LATCH SIDE, MOUNT SIGN TO THE NEAREST ADJACENT WALL. SIGNS MUST BE 2" FROM DOOR JAMB WITH 18" CLEAR FLOOR SPACE FROM CENTER OF SIGN.
 6. WALL MOUNTED SIGNS TO HAVE 72" MIN (VA STANDARD) CLEARANCE BETWEEN BOTTOM OF SIGN & FINISHED FLOOR.
 7. SIGN MESSAGE SCHEDULE SUBJECT TO FINAL APPROVAL BY OWNER.
 8. ALL SIGNS TO MEET FACILITY SIGN STANDARD. REFER TO SECTION 10 14 00 FOR SPECIFICATION.



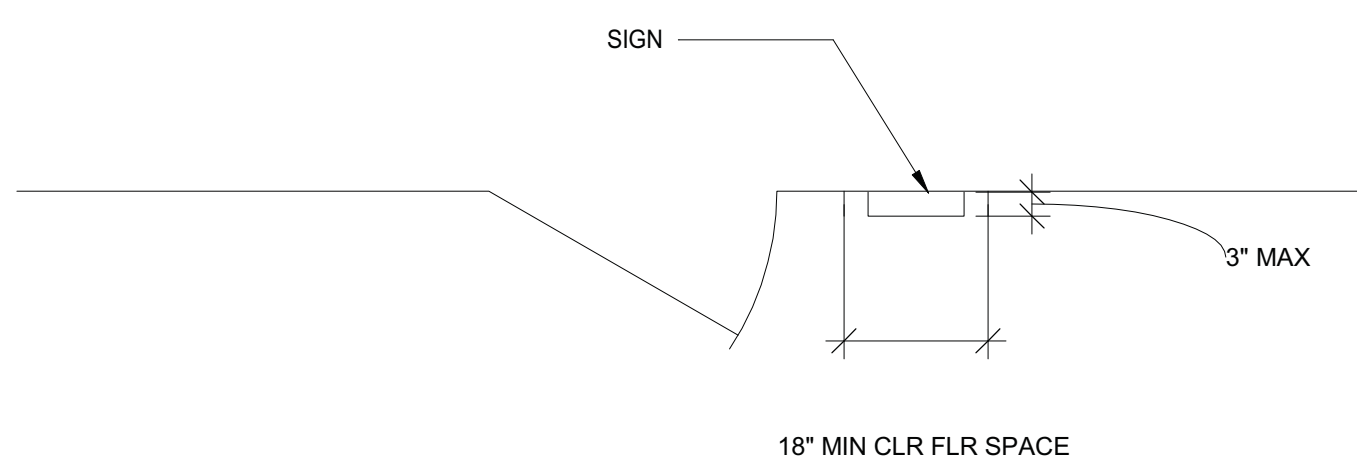
3 IN-01.31 FIRE EQUIPMENT FLAG
6" - 1'-0"



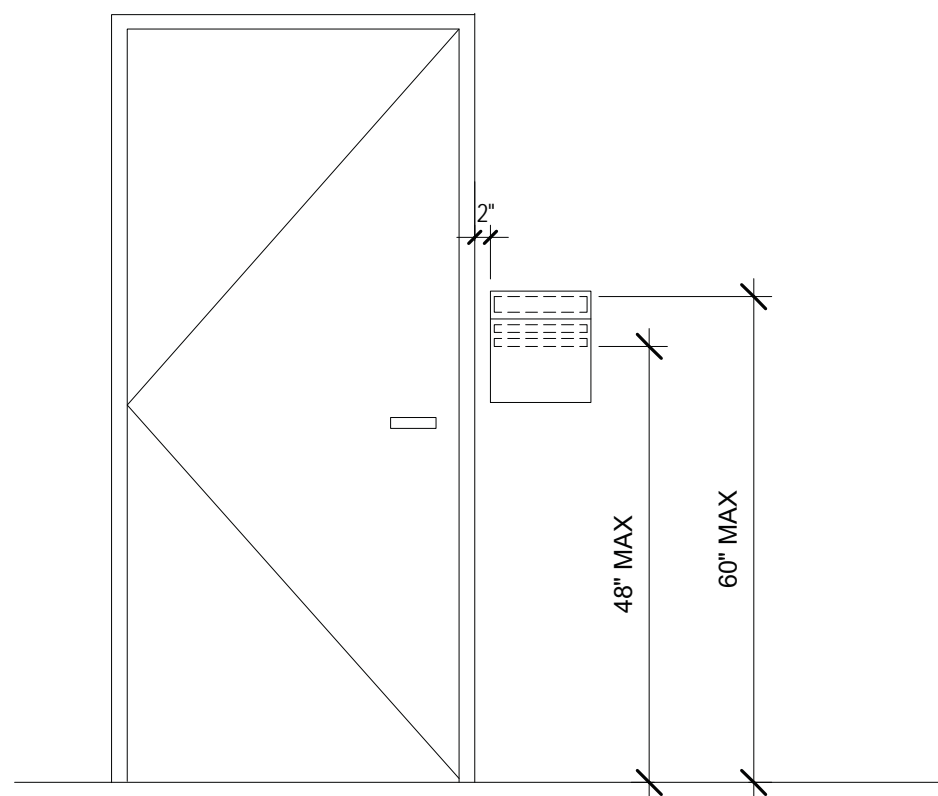
4 IN-11.01 - ROOF ACCESS SIGN
6" - 1'-0"



7 EN-06.06 - WALL MOUNTED BUILDING IDENTIFICATION SIGN
3" - 1'-0"



5 PLAN VIEW
1/2" - 1'-0"



6 INTERIOR WALL ELEVATION
1/2" - 1'-0"

BID SET

Revisions:	CONSULTANT	ARCHITECT/ENGINEER OF RECORD	I. THOMAS OLESAK, AM THE COORDINATING PROFESSIONAL ON THE CONSTRUCT AIR HANDLING TOWER PROJECT.	Office of Construction and Facilities Management VA U.S. Department of Veterans Affairs	Drawing Title	Phase	Project Title	Project Number
	Date:					WAYFINDING BLDG MESSAGE SCHEDULES & SIGNAGE DETAILS	100% CONSTRUCTION DOCUMENTS	NWIHCS - CONSTRUCT AIR HANDLING TOWER
		13605 1st Ave. N. #100 Plymouth, MN 55441 P 763.412.4000 F 763.412.4090 ae-mn.com Anderson Engineering of Minnesota, LLC Proj # 15744			Approved:	FULLY SPRINKLERED	Location	Building Number
							OMAHA, NE	1
							Issue Date	Drawing Number
							05/28/21	AW601
							Checked	Drawn
							LA	MP