

KEYNOTES

- ① CONSTRUCTION ACCESS. REPAIR ALL DAMAGED PAVEMENT AT COMPLETION OF PROJECT
- ② REMOVE AND DISPOSE OF TREE FOR ACCESS ROUTE
- ③ CONSTRUCTION ACCESS ROCK ENTRANCE FOR TRUCK WHEEL DEBRIS
- ④ CONSTRUCTION LAY DOWN AREA
- ⑤ VAMC TO CONFIRM USE OF PARKING AREA/LOT

SITE ACCESS & STAGING NOTES

1. CONTRACTOR SHALL UTILIZE EXISTING PARKING AREAS FOR STAGING OF MATERIALS AND EQUIPMENT. NO STAGING IS ALLOWED OUTSIDE OF CONSTRUCTION LIMITS. COORDINATE EACH STAGING LOCATION WITH COR AND MEDICAL CENTER DIRECTOR.
2. CONFIRM MAXIMUM DURATION WITH CONSTRUCTION CONTRACT. CONTRACTOR SHALL COORDINATE PHASING SCHEDULE ACCORDINGLY.
3. CONTRACTOR TO PROVIDE TEMPORARY DIRECTIONAL SIGNAGE THROUGH MEDICAL CENTER AS NEEDED. MAINTAIN ACCESS TO ALL AREAS EXCEPT THOSE UNDER CONSTRUCTION.
4. MAINTAIN ALL ROADS IN CLEAR, SAFE CONDITION. ONGOING STREET SWEEPING OF MEDICAL CENTER AND PUBLIC STREETS SHALL BE COMPLETED DAILY.
5. DUE TO LIMITED STAGING ZONES AND TIGHT SITE CONSTRAINTS, MATERIAL MAY NEED TO BE EXPORTED OFF-SITE AND MATERIAL WILL BE RE-IMPORTED. CONTRACTOR SHOULD SCHEDULE DELIVERY OF MATERIALS IN A WAY TO MINIMIZE THE NEED TO STORE ONSITE.
6. SCHEDULE EQUIPMENT OF PROPER HEIGHT AND WIDTH TO ACCOMMODATE ACCESS THROUGH EXISTING MEDICAL CENTER GATES. CONSTRUCT ACCESS BY PASS AT EXISTING GATE.
7. ADHERE TO ALL LOCAL ROAD WEIGHT LIMIT RESTRICTIONS.
8. INDIVIDUAL PHASED WORK SHALL BE COMPLETED WITHIN ALLOTTED CALENDAR DAYS PER COMPLETION SCHEDULE. CONTRACTOR SHALL NOT BEGIN DEMOLITION ON OTHER PHASES UNTIL THE PREVIOUS PHASE IS OPEN TO TRAFFIC. SEE TABLE ON THIS PLAN SHEET. SITE MOBILIZATION AND START UP DO NOT COUNT TOWARDS CONSTRUCTION DURATION OF PHASED WORK. DURATION OF PHASED WORK LISTED IS MAXIMUM. IF EARLY COMPLETION IN ONE PHASE OCCURS, WORK CAN BEGIN IMMEDIATELY IN THE NEXT PHASE. CONTRACTOR ALLOWED TO REORDER PHASES.
9. VAMC TO COORDINATE OFF SITE SHUTTLE FOR STAFF.

PHASING & ACCESS LEGEND

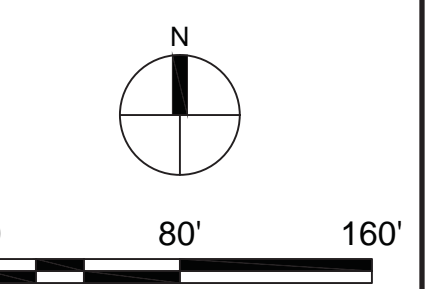
- CONSTRUCTION TRAFFIC DIRECTIONS
- APPROXIMATE CONSTRUCTION LIMITS AND LAYOUT (COINCIDES WITH TEMPORARY CONSTRUCTION FENCE W/SCREENING)

PHASE COMPLETION SCHEDULE

CONTRACTOR TO PROVIDE PROPOSED PHASING SCHEDULE

GENERAL CONSTRUCTION NOTES

1. CONTRACTOR SHALL PROVIDE INLET PROTECTION AT ALL INDIVIDUAL STORM DRAIN INLETS. SEE TESC AND SWPPP PLANS.
2. EXISTING CONCRETE CURB TO REMAIN IN PLACE AT PAVEMENT REHABILITATION AREAS.
3. NEW CURB/STREET PAVING TO MATCH EXISTING PAVEMENT ELEVATIONS AT PARKING LOT EDGE.



BID SET

Revisions:	Date:

CONSULTANT

ARCHITECT/ENGINEER OF RECORD

13605 1st Ave. N. #100 Plymouth, MN 55441
P 763.412.4000 | F 763.412.4090 | ae-mn.com
Anderson Engineering of Minnesota, LLC | Proj # 15744

STAMP

HEREBY CERTIFY THAT THIS PLAN, SPECIFICATION, OR REPORT WAS PREPARED BY ME OR UNDER MY DIRECT SUPERVISION AND THAT I AM A duly LICENSED PROFESSIONAL ENGINEER UNDER THE LAWS OF THE STATE OF MINNESOTA.

PRINT NAME: MICHAEL B. BRANDVOLD, PE
SIGNATURE:

DATE: 05/28/2021 ENGINEER LICENSE # 41258

Office of Construction and Facilities Management

Drawing Title: ACCESS AND LOGISTICS PLAN

Approved: _____

Phase: 100% CONSTRUCTION DOCUMENTS

FULLY SPRINKLERED

Project Title: NWHCS - CONSTRUCT AIR HANDLING TOWER

Location: OMAHA, NE

Issue Date: 05/28/21

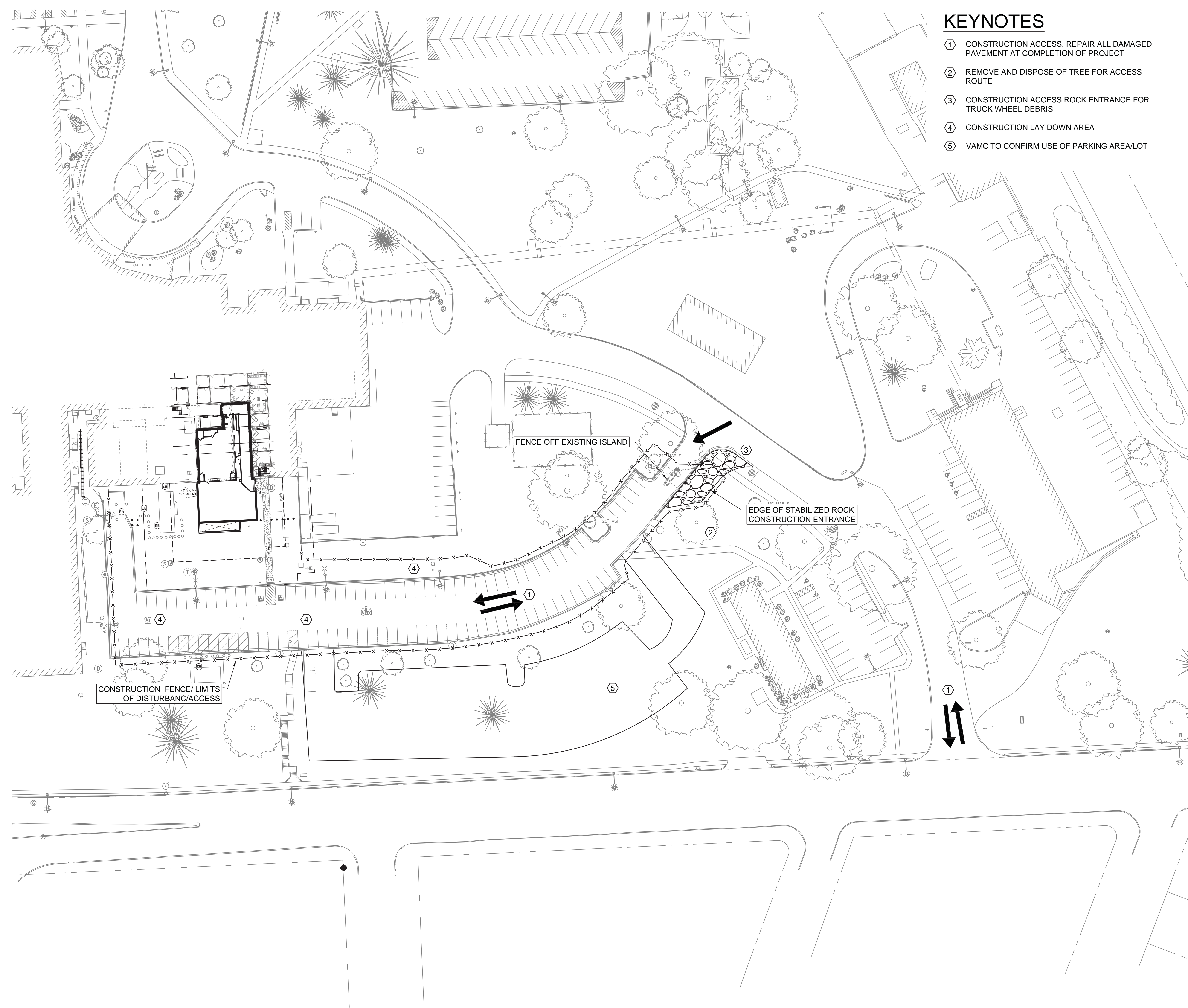
Checked: MB

Drawn: EF

Project Number: 636-18-303

Building Number: 1

Drawing Number: CL101



- ### KEYNOTES
- ① CONSTRUCTION ACCESS. REPAIR ALL DAMAGED PAVEMENT AT COMPLETION OF PROJECT
 - ② REMOVE AND DISPOSE OF TREE FOR ACCESS ROUTE
 - ③ CONSTRUCTION ACCESS ROCK ENTRANCE FOR TRUCK WHEEL DEBRIS
 - ④ CONSTRUCTION LAY DOWN AREA
 - ⑤ VAMC TO CONFIRM USE OF PARKING AREA/LOT

SITE ACCESS & STAGING NOTES

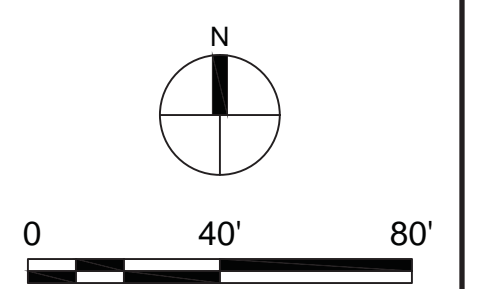
SEE CL101 FOR NOTES

- ### PHASING & ACCESS LEGEND
- CONSTRUCTION TRAFFIC DIRECTIONS
 - APPROXIMATE CONSTRUCTION LIMITS AND LAYDOWN (COINCIDES WITH TEMPORARY CONSTRUCTION FENCE W/SCREENING)

PHASE COMPLETION SCHEDULE

CONTRACTOR TO PROVIDE PROPOSED PHASING SCHEDULE

- ### GENERAL CONSTRUCTION NOTES
1. CONTRACTOR SHALL PROVIDE INLET PROTECTION AT ALL INDIVIDUAL STORM DRAIN INLETS. SEE TESC AND SWPPP PLANS.
 2. EXISTING CONCRETE CURB TO REMAIN IN PLACE AT PAVEMENT REHABILITATION AREAS.
 3. NEW CURB/STREET PAVING TO MATCH EXISTING PAVEMENT ELEVATIONS AT PARKING LOT EDGE.



BID SET

Revisions:	Date:

CONSULTANT

ARCHITECT/ENGINEER OF RECORD

13605 1st Ave. N. #100 Plymouth, MN 55441
P 763.412.4000 | F 763.412.4090 | ae-mn.com
Anderson Engineering of Minnesota, LLC | Proj # 15744

STAMP

HEREBY CERTIFY THAT THIS PLAN, SPECIFICATION, OR REPORT WAS PREPARED BY ME OR UNDER MY DIRECT SUPERVISION AND THAT I AM A DULY LICENSED PROFESSIONAL ENGINEER UNDER THE LAWS OF THE STATE OF MINNESOTA.

PRINT NAME: MICHAEL B. BRANDVOLD, PE
SIGNATURE:

DATE: 05/28/2021 ENGINEER LICENSE # 41258

Office of Construction and Facilities Management

Drawing Title

ACCESS AND LOGISTICS PLAN

Approved:

Phase

100% CONSTRUCTION DOCUMENTS

FULLY SPRINKLERED

Project Title

NWIHCS - CONSTRUCT AIR HANDLING TOWER

Location

OMAHA, NE

Issue Date

05/28/21

Checked

MB

Drawn

EF

Project Number

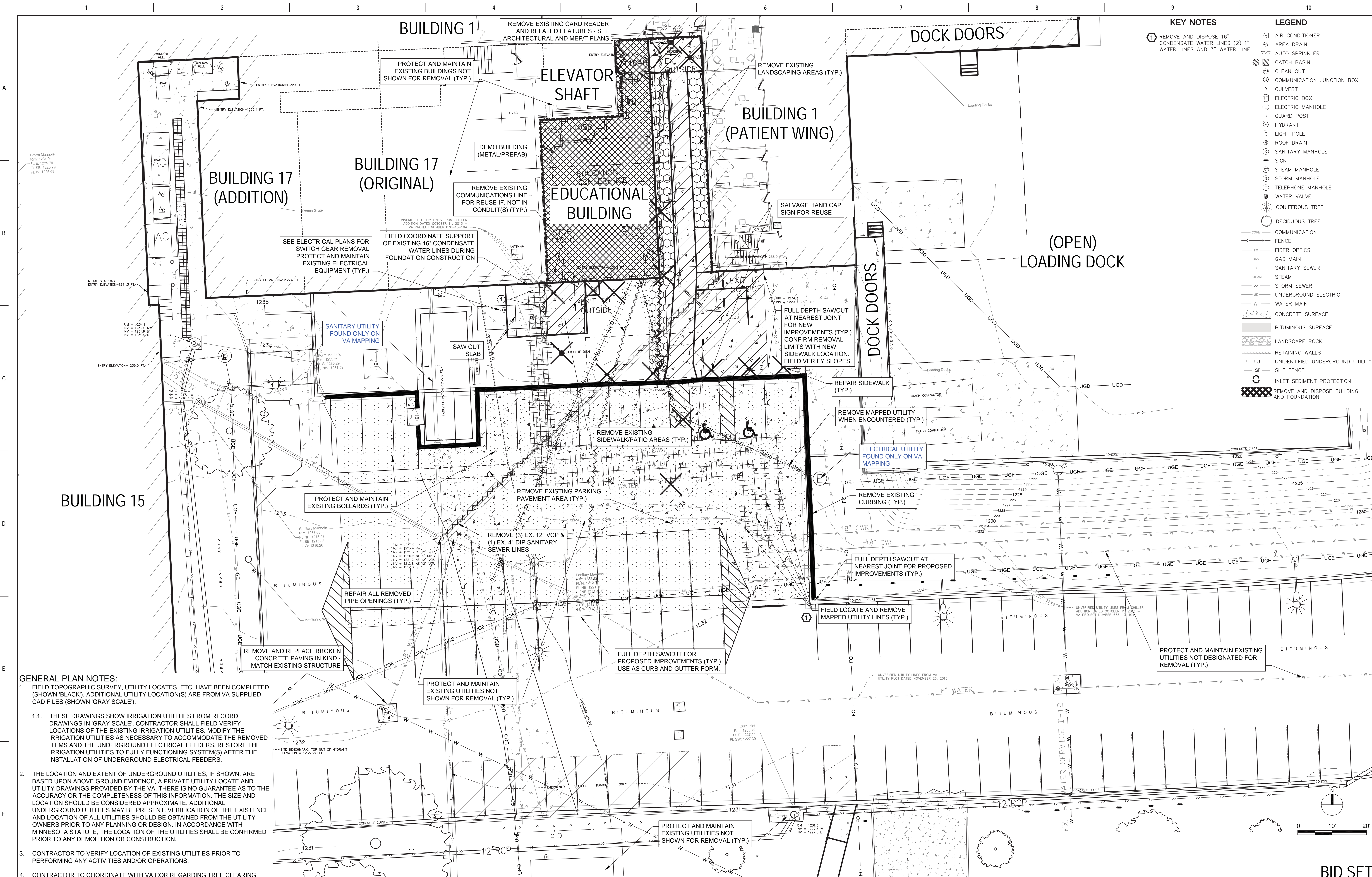
636-18-303

Building Number

1

Drawing Number

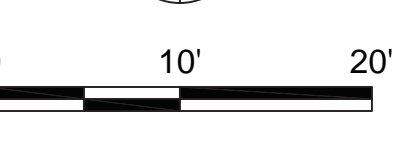
CL102



KEY NOTES	LEGEND
1 REMOVE AND DISPOSE 16" CONDENSATE WATER LINES (2) 1" WATER LINES AND 3" WATER LINE	AIR CONDITIONER
	AREA DRAIN
	AUTO SPRINKLER
	CATCH BASIN
	CLEAN OUT
	COMMUNICATION JUNCTION BOX
	CULVERT
	ELECTRIC BOX
	ELECTRIC MANHOLE
	GUARD POST
	HYDRANT
	LIGHT POLE
	ROOF DRAIN
	SANITARY MANHOLE
	SIGN
	STEAM MANHOLE
	STORM MANHOLE
	TELEPHONE MANHOLE
	WATER VALVE
	CONIFEROUS TREE
	DECIDUOUS TREE
	COMMUNICATION
	FENCE
	FIBER OPTICS
	GAS MAIN
	SANITARY SEWER
	STEAM
	STORM SEWER
	UNDERGROUND ELECTRIC
	WATER MAIN
	CONCRETE SURFACE
	BITUMINOUS SURFACE
	LANDSCAPE ROCK
	RETAINING WALLS
	UNIDENTIFIED UNDERGROUND UTILITY
	SILT FENCE
	INLET SEDIMENT PROTECTION
	REMOVE AND DISPOSE BUILDING AND FOUNDATION

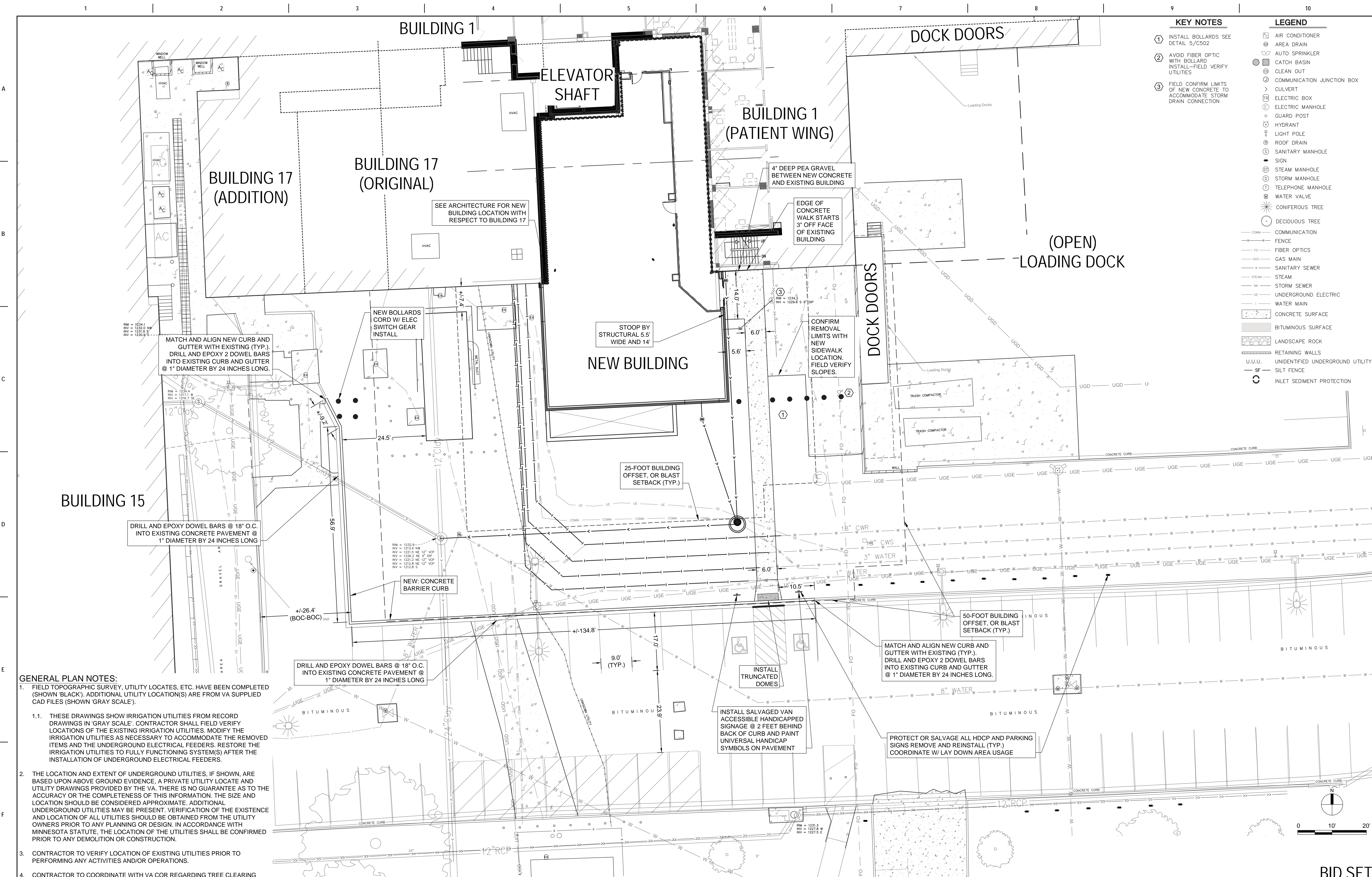
GENERAL PLAN NOTES:

- FIELD TOPOGRAPHIC SURVEY, UTILITY LOCATES, ETC. HAVE BEEN COMPLETED (SHOWN 'BLACK'). ADDITIONAL UTILITY LOCATION(S) ARE FROM VA SUPPLIED CAD FILES (SHOWN 'GRAY SCALE').
- THESE DRAWINGS SHOW IRRIGATION UTILITIES FROM RECORD DRAWINGS IN 'GRAY SCALE'. CONTRACTOR SHALL FIELD VERIFY LOCATIONS OF THE EXISTING IRRIGATION UTILITIES. MODIFY THE IRRIGATION UTILITIES AS NECESSARY TO ACCOMMODATE THE REMOVED ITEMS AND THE UNDERGROUND ELECTRICAL FEEDERS. RESTORE THE IRRIGATION UTILITIES TO FULLY FUNCTIONING SYSTEM(S) AFTER THE INSTALLATION OF UNDERGROUND ELECTRICAL FEEDERS.
- THE LOCATION AND EXTENT OF UNDERGROUND UTILITIES, IF SHOWN, ARE BASED UPON ABOVE GROUND EVIDENCE, A PRIVATE UTILITY LOCATE AND UTILITY DRAWINGS PROVIDED BY THE VA. THERE IS NO GUARANTEE AS TO THE ACCURACY OR THE COMPLETENESS OF THIS INFORMATION. THE SIZE AND LOCATION SHOULD BE CONSIDERED APPROXIMATE. ADDITIONAL UNDERGROUND UTILITIES MAY BE PRESENT. VERIFICATION OF THE EXISTENCE AND LOCATION OF ALL UTILITIES SHOULD BE OBTAINED FROM THE UTILITY OWNERS PRIOR TO ANY PLANNING OR DESIGN. IN ACCORDANCE WITH MINNESOTA STATUTE, THE LOCATION OF THE UTILITIES SHALL BE CONFIRMED PRIOR TO ANY DEMOLITION OR CONSTRUCTION.
- CONTRACTOR TO VERIFY LOCATION OF EXISTING UTILITIES PRIOR TO PERFORMING ANY ACTIVITIES AND/OR OPERATIONS.
- CONTRACTOR TO COORDINATE WITH VA COR REGARDING TREE CLEARING THREATENED AND ENDANGERED SPECIES CALENDAR RESTRICTIONS.



BID SET

CONSULTANT 	ARCHITECT/ENGINEER OF RECORD 13605 1st Ave. N. #100 Plymouth, MN 55441 P 763.412.4000 F 763.412.4090 ae-mn.com Anderson Engineering of Minnesota, LLC Proj # 15744	STAMP I HEREBY CERTIFY THAT THE DESIGN SPECIFICATION OR REPORT WAS PREPARED BY ME OR UNDER MY DIRECT SUPERVISION AND THAT I AM A LICENSED PROFESSIONAL ENGINEER UNDER THE LAWS OF THE STATE OF MINNESOTA. PRINT NAME: MICHAEL B. BRANDVOLD, PE SIGNATURE: ENGINEER DATE: 05/28/2021 LICENSE # 41298	Office of Construction and Facilities Management VA U.S. Department of Veterans Affairs	Drawing Title DEMOLITION PLAN	Phase 100% CONSTRUCTION DOCUMENTS	Project Title NWVHCS - CONSTRUCT AIR HANDLING TOWER	Project Number 636-18-303		
Revisions:	Date:	Approved:	Fully Sprinklered FULLY SPRINKLERED	Location OMAHA, NE	Issue Date 05/28/21	Checked MB	Drawn EF	Building Number 1	Drawing Number CD101



KEY NOTES	LEGEND
1. INSTALL BOLLARDS SEE DETAIL 5/C502	AIR CONDITIONER
2. AVOID FIBER OPTIC WITH BOLLARD INSTALL-FIELD VERIFY UTILITIES	AREA DRAIN
3. FIELD CONFIRM LIMITS OF NEW CONCRETE TO ACCOMMODATE STORM DRAIN CONNECTION	AUTO SPRINKLER
	CATCH BASIN
	CLEAN OUT
	COMMUNICATION JUNCTION BOX
	CULVERT
	ELECTRIC BOX
	ELECTRIC MANHOLE
	GUARD POST
	HYDRANT
	LIGHT POLE
	ROOF DRAIN
	SANITARY MANHOLE
	SIGN
	STEAM MANHOLE
	STORM MANHOLE
	TELEPHONE MANHOLE
	WATER VALVE
	CONFEROUS TREE
	DECIDUOUS TREE
	COMMUNICATION
	FENCE
	FIBER OPTICS
	GAS MAIN
	SANITARY SEWER
	STEAM
	STEAM SEWER
	UNDERGROUND ELECTRIC
	WATER MAIN
	CONCRETE SURFACE
	BITUMINOUS SURFACE
	LANDSCAPE ROCK
	RETAINING WALLS
	UNIDENTIFIED UNDERGROUND UTILITY
	SILT FENCE
	INLET SEDIMENT PROTECTION

- GENERAL PLAN NOTES:**
- FIELD TOPOGRAPHIC SURVEY, UTILITY LOCATES, ETC. HAVE BEEN COMPLETED (SHOWN 'BLACK'). ADDITIONAL UTILITY LOCATION(S) ARE FROM VA SUPPLIED CAD FILES (SHOWN 'GRAY SCALE').
 - THESE DRAWINGS SHOW IRRIGATION UTILITIES FROM RECORD DRAWINGS IN 'GRAY SCALE'. CONTRACTOR SHALL FIELD VERIFY LOCATIONS OF THE EXISTING IRRIGATION UTILITIES. MODIFY THE IRRIGATION UTILITIES AS NECESSARY TO ACCOMMODATE THE REMOVED ITEMS AND THE UNDERGROUND ELECTRICAL FEEDERS. RESTORE THE IRRIGATION UTILITIES TO FULLY FUNCTIONING SYSTEM(S) AFTER THE INSTALLATION OF UNDERGROUND ELECTRICAL FEEDERS.
 - THE LOCATION AND EXTENT OF UNDERGROUND UTILITIES, IF SHOWN, ARE BASED UPON ABOVE GROUND EVIDENCE, A PRIVATE UTILITY LOCATE AND UTILITY DRAWINGS PROVIDED BY THE VA. THERE IS NO GUARANTEE AS TO THE ACCURACY OR THE COMPLETENESS OF THIS INFORMATION. THE SIZE AND LOCATION SHOULD BE CONSIDERED APPROXIMATE. ADDITIONAL UNDERGROUND UTILITIES MAY BE PRESENT. VERIFICATION OF THE EXISTENCE AND LOCATION OF ALL UTILITIES SHOULD BE OBTAINED FROM THE UTILITY OWNERS PRIOR TO ANY PLANNING OR DESIGN. IN ACCORDANCE WITH MINNESOTA STATUTE, THE LOCATION OF THE UTILITIES SHALL BE CONFIRMED PRIOR TO ANY DEMOLITION OR CONSTRUCTION.
 - CONTRACTOR TO VERIFY LOCATION OF EXISTING UTILITIES PRIOR TO PERFORMING ANY ACTIVITIES AND/OR OPERATIONS.
 - CONTRACTOR TO COORDINATE WITH VA COR REGARDING TREE CLEARING THREATENED AND ENDANGERED SPECIES CALENDAR RESTRICTIONS.

Revisions:	Date:

CONSULTANT

ARCHITECT/ENGINEER OF RECORD

13605 1st Ave. N. #100 Plymouth, MN 55441
 P 763.412.4000 | F 763.412.4090 | ae-mn.com
 Anderson Engineering of Minnesota, LLC | Proj # 15744

STAMP

HEREBY CERTIFY THAT THIS PLAN SPECIFICATION OR REPORT WAS PREPARED BY ME OR UNDER MY DIRECT SUPERVISION AND THAT I AM A LICENSED PROFESSIONAL ENGINEER UNDER THE LAWS OF THE STATE OF MINNESOTA.

PRINT NAME: MICHAEL B. BRANDVOLD, PE
 SIGNATURE: *Michael B. Brandvold*
 ENGINEER
 DATE: 05/28/2021 LICENSE # 41258

Office of Construction and Facilities Management

VA U.S. Department of Veterans Affairs

Drawing Title

SITE PLAN

Approved:

Phase

100% CONSTRUCTION DOCUMENTS

FULLY SPRINKLERED

Project Title

NWIHCS - CONSTRUCT AIR HANDLING TOWER

Location

OMAHA, NE

Issue Date

05/28/21

Checked

MB

Drawn

EF

BID SET

Project Number

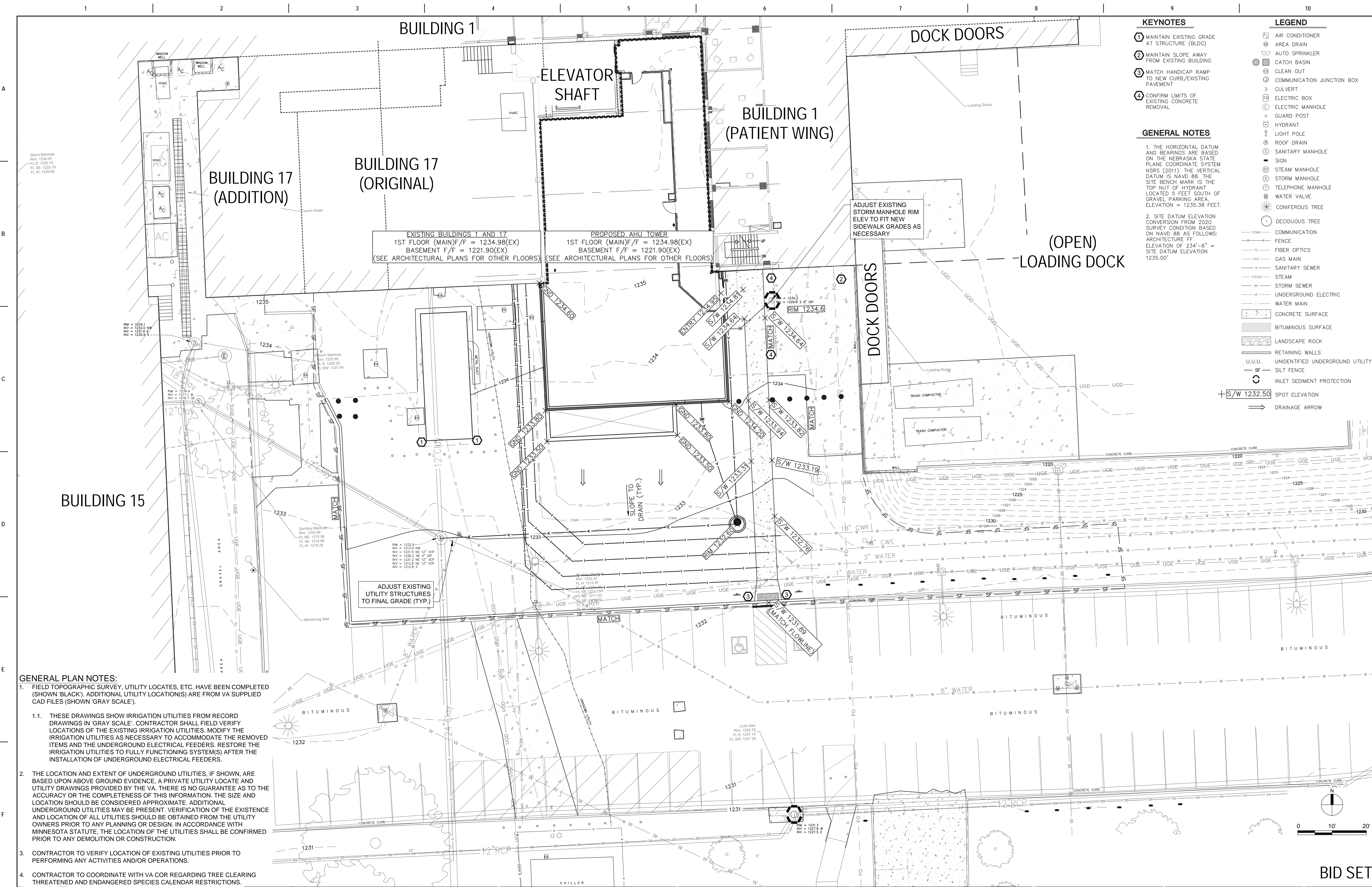
636-18-303

Building Number

1

Drawing Number

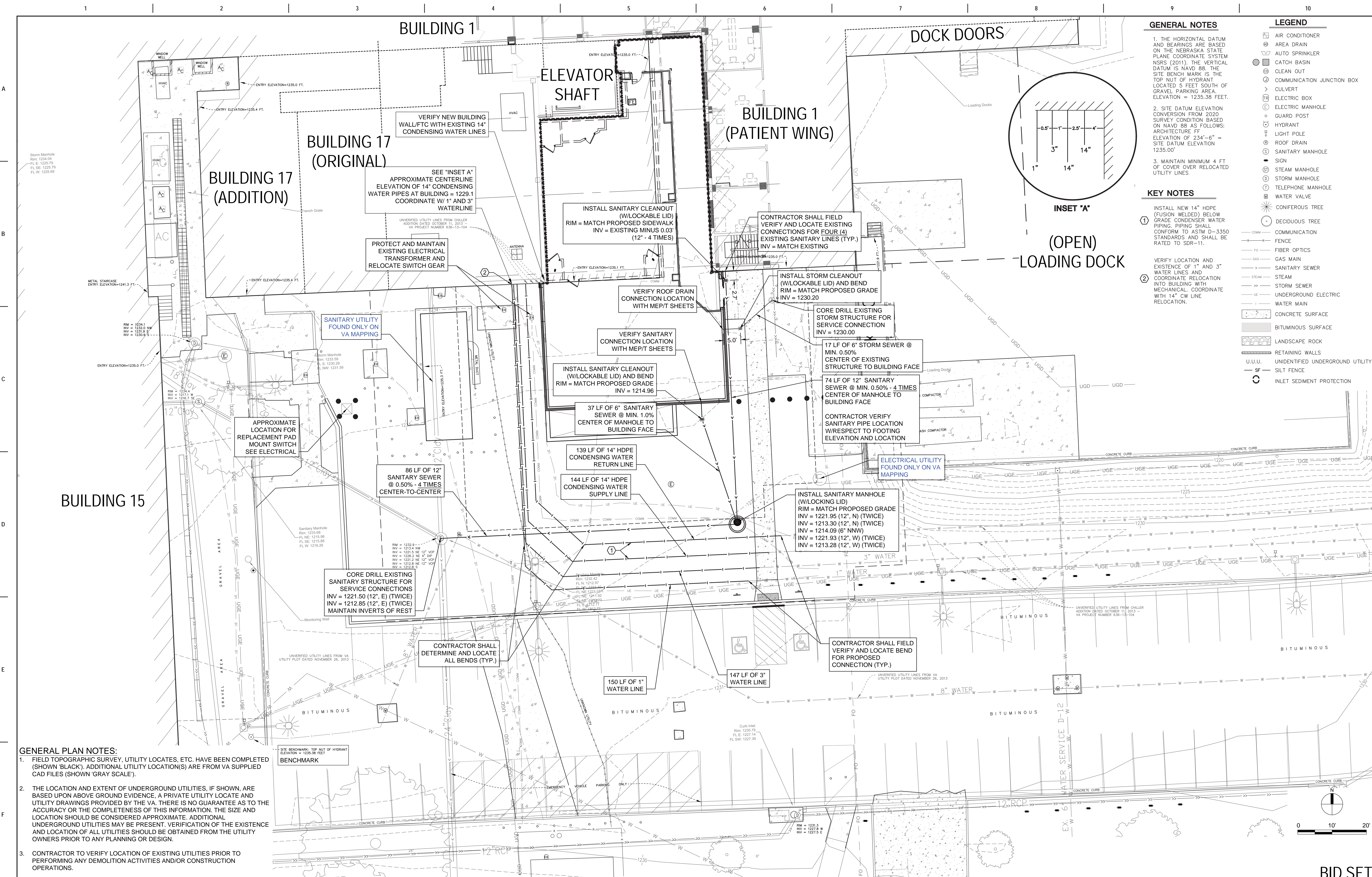
CS101



GENERAL PLAN NOTES:

- FIELD TOPOGRAPHIC SURVEY, UTILITY LOCATES, ETC. HAVE BEEN COMPLETED (SHOWN 'BLACK'). ADDITIONAL UTILITY LOCATION(S) ARE FROM VA SUPPLIED CAD FILES (SHOWN 'GRAY SCALE').
- THESE DRAWINGS SHOW IRRIGATION UTILITIES FROM RECORD DRAWINGS IN 'GRAY SCALE'. CONTRACTOR SHALL FIELD VERIFY LOCATIONS OF THE EXISTING IRRIGATION UTILITIES. MODIFY THE IRRIGATION UTILITIES AS NECESSARY TO ACCOMMODATE THE REMOVED ITEMS AND THE UNDERGROUND ELECTRICAL FEEDERS. RESTORE THE IRRIGATION UTILITIES TO FULLY FUNCTIONING SYSTEM(S) AFTER THE INSTALLATION OF UNDERGROUND ELECTRICAL FEEDERS.
- THE LOCATION AND EXTENT OF UNDERGROUND UTILITIES, IF SHOWN, ARE BASED UPON ABOVE GROUND EVIDENCE. A PRIVATE UTILITY LOCATE AND UTILITY DRAWINGS PROVIDED BY THE VA. THERE IS NO GUARANTEE AS TO THE ACCURACY OR THE COMPLETENESS OF THIS INFORMATION. THE SIZE AND LOCATION SHOULD BE CONSIDERED APPROXIMATE. ADDITIONAL UNDERGROUND UTILITIES MAY BE PRESENT. VERIFICATION OF THE EXISTENCE AND LOCATION OF ALL UTILITIES SHOULD BE OBTAINED FROM THE UTILITY OWNERS PRIOR TO ANY PLANNING OR DESIGN. IN ACCORDANCE WITH MINNESOTA STATUTE, THE LOCATION OF THE UTILITIES SHALL BE CONFIRMED PRIOR TO ANY DEMOLITION OR CONSTRUCTION.
- CONTRACTOR TO VERIFY LOCATION OF EXISTING UTILITIES PRIOR TO PERFORMING ANY ACTIVITIES AND/OR OPERATIONS.
- CONTRACTOR TO COORDINATE WITH VA COR REGARDING TREE CLEARING THREATENED AND ENDANGERED SPECIES CALENDAR RESTRICTIONS.

Revisions: Date:	CONSULTANT 	ARCHITECT/ENGINEER OF RECORD 13605 1st Ave. N. #100 Plymouth, MN 55441 P 763.412.4000 F 763.412.4090 ae-mn.com Anderson Engineering of Minnesota, LLC Proj # 15744	STAMP I HEREBY CERTIFY THAT THIS PLAN, SPECIFICATION, OR REPORT WAS PREPARED BY ME OR UNDER MY DIRECT SUPERVISION AND THAT I AM A duly LICENSED PROFESSIONAL ENGINEER UNDER THE LAWS OF THE STATE OF MINNESOTA. PRINT NAME: MICHAEL B. BRANDVOLD, PE SIGNATURE: DATE: 06/28/2021 ENGINEER LICENSE # 41258	Office of Construction and Facilities Management U.S. Department of Veterans Affairs	Drawing Title GRADING AND EROSION CONTROL PLAN Approved:	Phase 100% CONSTRUCTION DOCUMENTS FULLY SPRINKLERED	Project Title NWIHCS - CONSTRUCT AIR HANDLING TOWER Location OMAHA, NE Issue Date 05/28/21 Checked MB Drawn EF	Project Number 636-18-303 Building Number 1 Drawing Number CG101
-------------------------	-----------------------	--	--	---	---	---	---	--



GENERAL NOTES

1. THE HORIZONTAL DATUM AND BEARINGS ARE BASED ON THE NEBRASKA STATE PLANE COORDINATE SYSTEM NSRS (2011). THE VERTICAL DATUM IS NAVD 88. THE SITE BENCHMARK IS THE TOP NUT OF HYDRANT LOCATED 5 FEET SOUTH OF GRAVEL PARKING AREA. ELEVATION = 1235.38 FEET.
2. SITE DATUM ELEVATION CONVERSION FROM 2020 SURVEY CONDITION BASED ON NAVD 88 AS FOLLOWS: ARCHITECTURE FF ELEVATION OF 234'-6" = SITE DATUM ELEVATION 1235.00'
3. MAINTAIN MINIMUM 4 FT. OF COVER OVER RELOCATED UTILITY LINES

KEY NOTES

1. INSTALL NEW 14" HDPE (FUSION WELDED) BELOW GRADE CONDENSER WATER PIPING. PIPING SHALL CONFORM TO ASTM D-3350 STANDARDS AND SHALL BE RATED TO SDR-11.
2. VERIFY LOCATION AND EXISTENCE OF 1" AND 3" WATER LINES AND COORDINATE RELOCATION INTO BUILDING WITH MECHANICAL. COORDINATE WITH 14" CW LINE RELOCATION.

GENERAL PLAN NOTES:

1. FIELD TOPOGRAPHIC SURVEY, UTILITY LOCATES, ETC. HAVE BEEN COMPLETED (SHOWN 'BLACK'). ADDITIONAL UTILITY LOCATION(S) ARE FROM VA SUPPLIED CAD FILES (SHOWN 'GRAY SCALE').
2. THE LOCATION AND EXTENT OF UNDERGROUND UTILITIES, IF SHOWN, ARE BASED UPON ABOVE GROUND EVIDENCE, A PRIVATE UTILITY LOCATE AND UTILITY DRAWINGS PROVIDED BY THE VA. THERE IS NO GUARANTEE AS TO THE ACCURACY OR THE COMPLETENESS OF THIS INFORMATION. THE SIZE AND LOCATION SHOULD BE CONSIDERED APPROXIMATE. ADDITIONAL UNDERGROUND UTILITIES MAY BE PRESENT. VERIFICATION OF THE EXISTENCE AND LOCATION OF ALL UTILITIES SHOULD BE OBTAINED FROM THE UTILITY OWNERS PRIOR TO ANY PLANNING OR DESIGN.
3. CONTRACTOR TO VERIFY LOCATION OF EXISTING UTILITIES PRIOR TO PERFORMING ANY DEMOLITION ACTIVITIES AND/OR CONSTRUCTION OPERATIONS.
4. CONTRACTOR TO COORDINATE WITH VA COR REGARDING TREE CLEARING.

Revisions:	Date:

CONSULTANT

ARCHITECT/ENGINEER OF RECORD

13605 1st Ave. N. #100 Plymouth, MN 55441
P 763.412.4000 | F 763.412.4090 | ae-mn.com
Anderson Engineering of Minnesota, LLC | Proj # 15744

STAMP

HEREBY CERTIFY THAT THIS PLAN, SPECIFICATION, OR REPORT WAS PREPARED BY ME OR UNDER MY DIRECT SUPERVISION AND THAT I AM A LICENSED PROFESSIONAL ENGINEER UNDER THE LAWS OF THE STATE OF MINNESOTA.

PRINT NAME: MICHAEL B. BRANDVOLD, PE
SIGNATURE: *Michael B. Brandvold*
DATE: 05/28/2021 ENGINEER LICENSE # 41258

Office of Construction and Facilities Management

Drawing Title: **UTILITY PLAN**

Approved: _____

Phase: **100% CONSTRUCTION DOCUMENTS**

FULLY SPRINKLERED

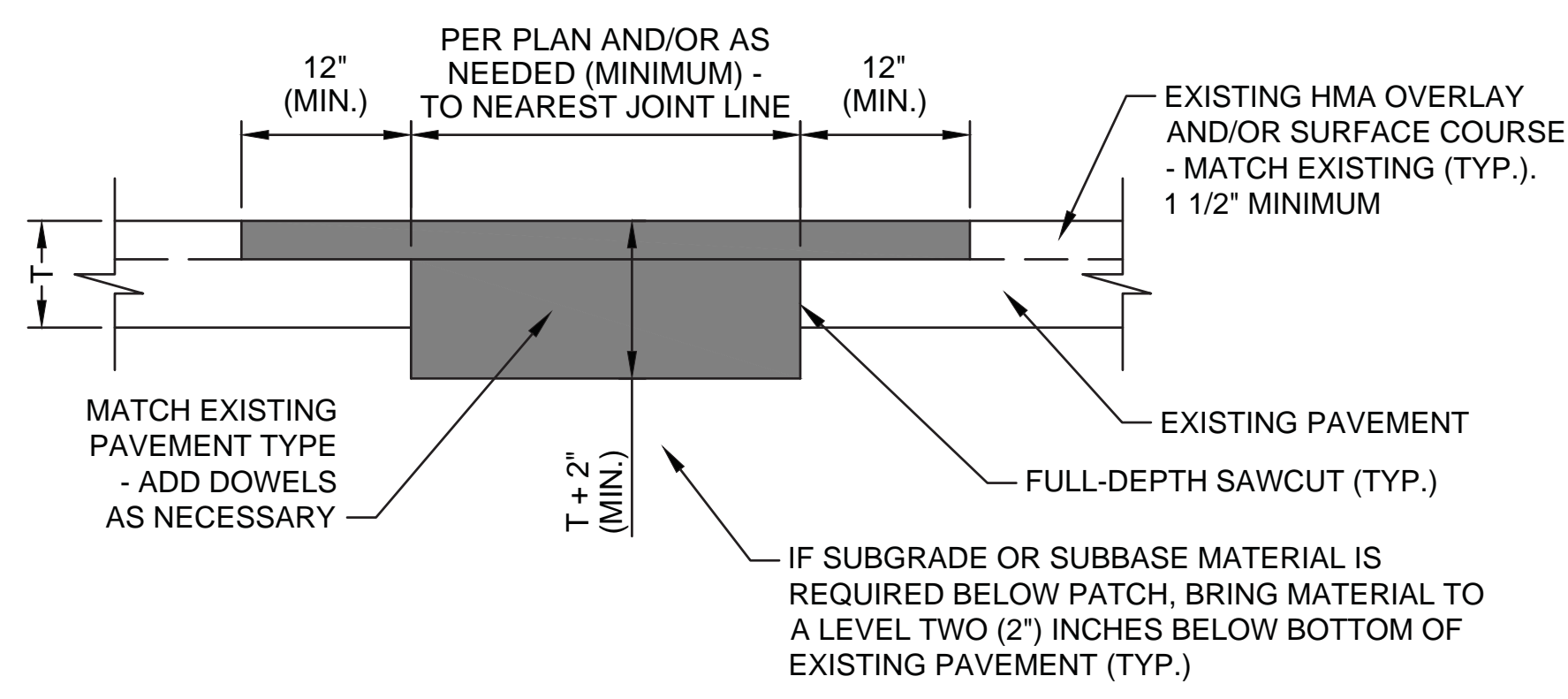
Project Title: **NWIHCS - CONSTRUCT AIR HANDLING TOWER**

Location: **OMAHA, NE**

Issue Date: 05/28/21
Checked: MB
Drawn: EF

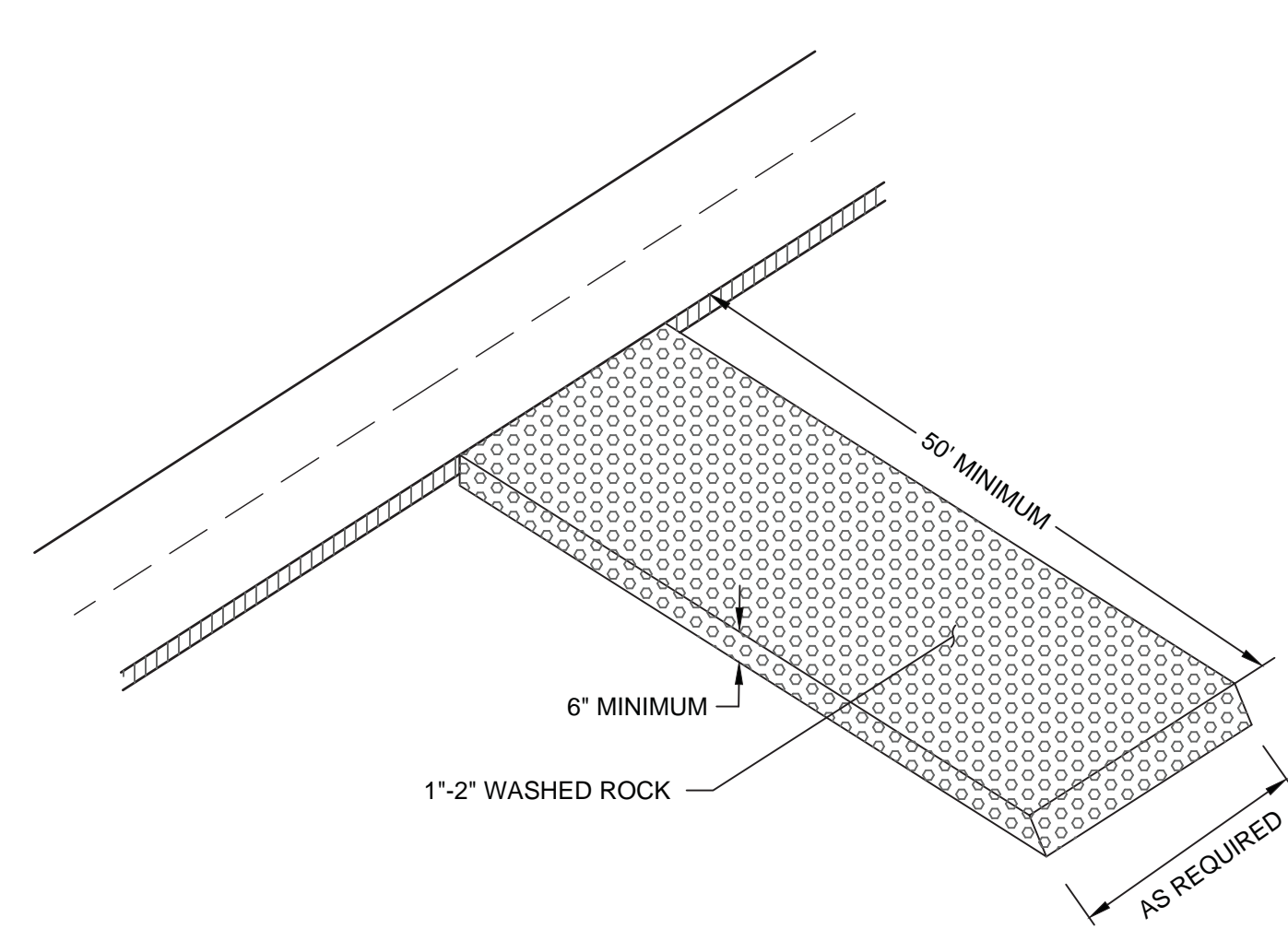
BID SET

Project Number: 636-18-303
Building Number: 1
Drawing Number: CU101



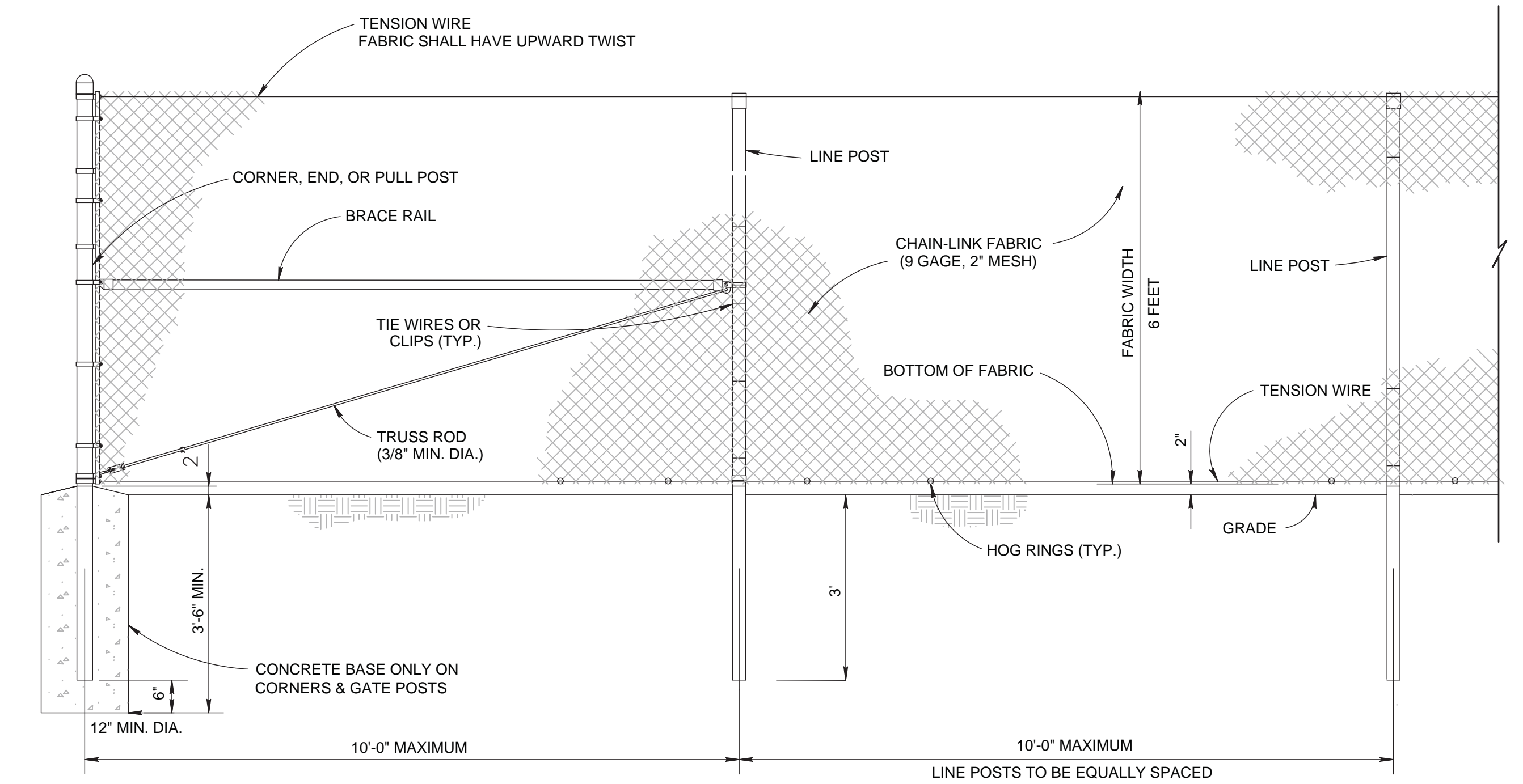
1 PAVEMENT PATCH DETAIL

SCALE: NTS



2 ROCK CONSTRUCTION ENTRANCE DETAIL

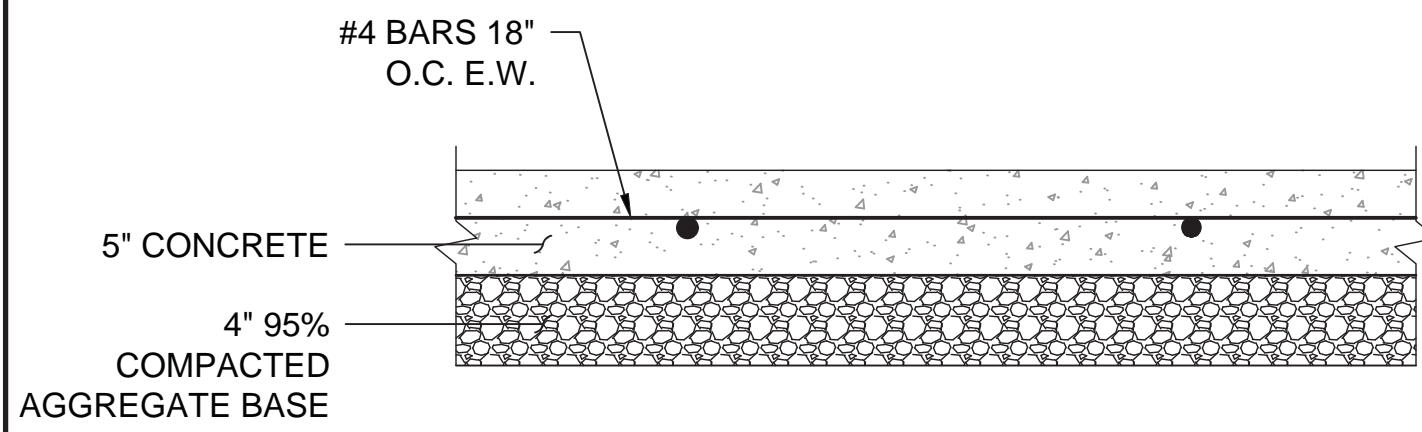
SCALE: NTS



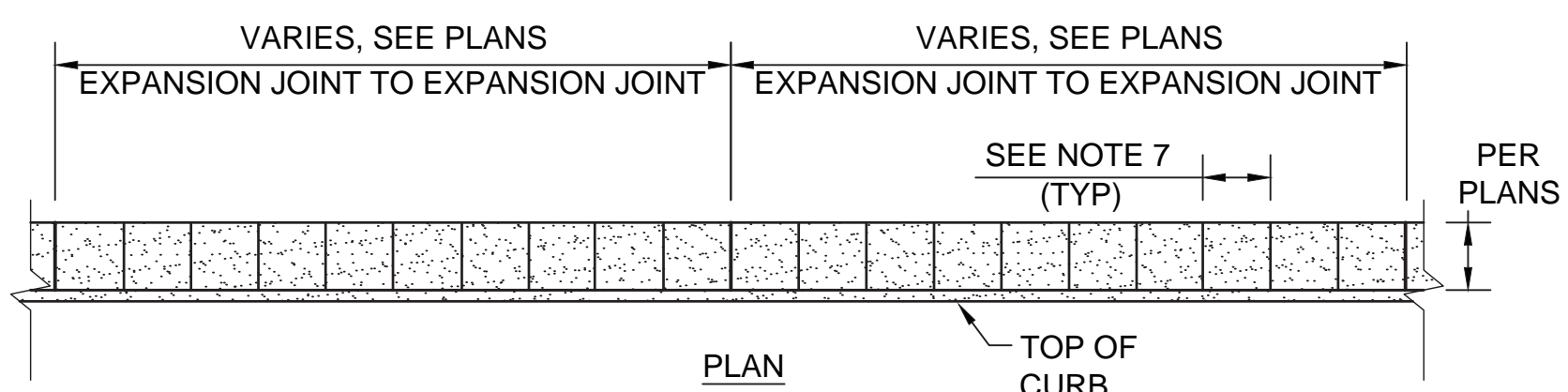
3 CONSTRUCTION FENCE DETAIL

SCALE: NTS

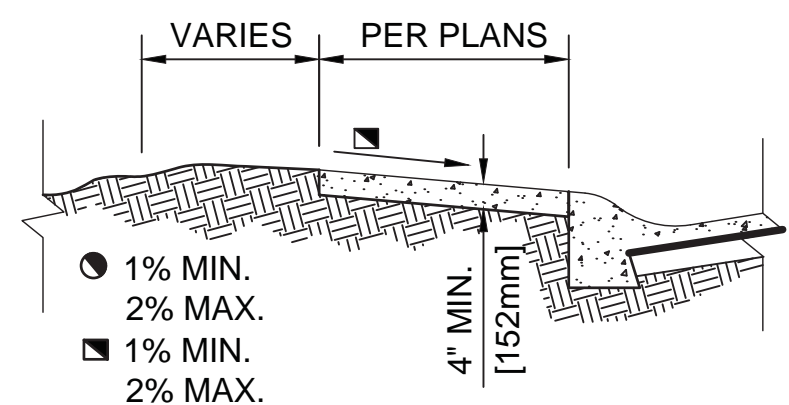
NOTE:
1. PROVIDE GREEN VISUAL SCREEN. SCREEN TO BE WIND PERMEABLE FABRIC, SECURED WITH SUFFICIENT NON-MARKING FASTNERS TO REMAIN SOUNDLY IN PLACE.



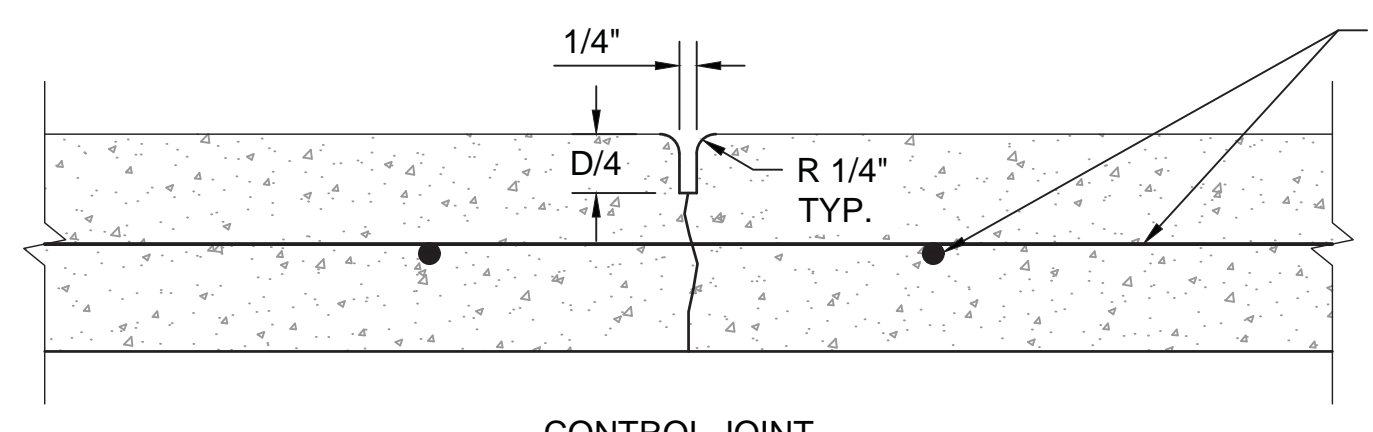
CONCRETE PAVEMENT SECTION



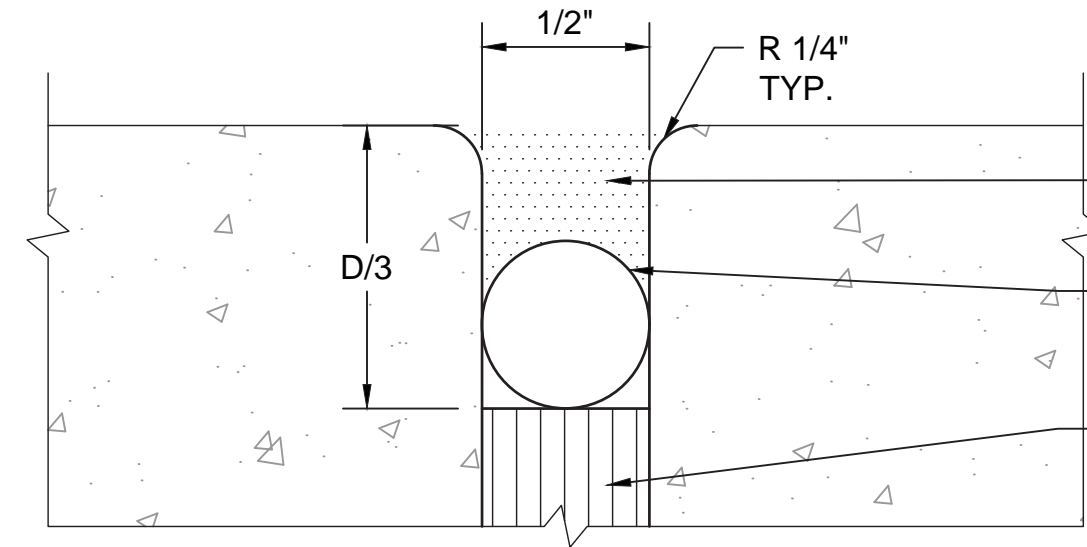
- NOTES:
- EXPANSION JOINTS SHALL BE LOCATED WHERE SIDEWALK ABUTS CONCRETE DRIVEWAYS, CURB OR OTHER ADJACENT STRUCTURES.
 - ONE-HALF INCH BITUMINOUS JOINT FILLER SHALL BE INSTALLED AT EXPANSION JOINT LOCATIONS AND SHALL EXTEND THE FULL DEPTH OF THE CONCRETE.
 - 1/2 DEPTH OF CONCRETE THICKNESS CONTRACTION JOINTS SHALL BE PLACED AT INTERVALS OF APPROXIMATELY 60' (4572mm) OR AT A SPACING THAT MATCHES THE ADJACENT CURB.
 - FORMED CONTRACTION JOINTS SHALL BE FINISHED WITH A TOOL HAVING A 1/4" RADIUS.
 - SCORED JOINTS SHALL BE 1/2 DEPTH OF CONCRETE THICKNESS AND PLACED AT THE SPACING INDICATED FOR THE WIDTH OF SIDEWALK OR MATCH SCORED JOINTS OF ADJACENT CURB.
 - CONCRETE SHALL BE FINISHED BY MEANS OF A FLOAT, STEEL TROWELLED AND BROOMED WITH A FINE BRUSH IN A TRANSVERSE DIRECTION.
 - SCORED CONTROL JOINTS (TYP) SPACED AS SHOWN ON THE PLANS.



TYPICAL SECTION



CONTROL JOINT



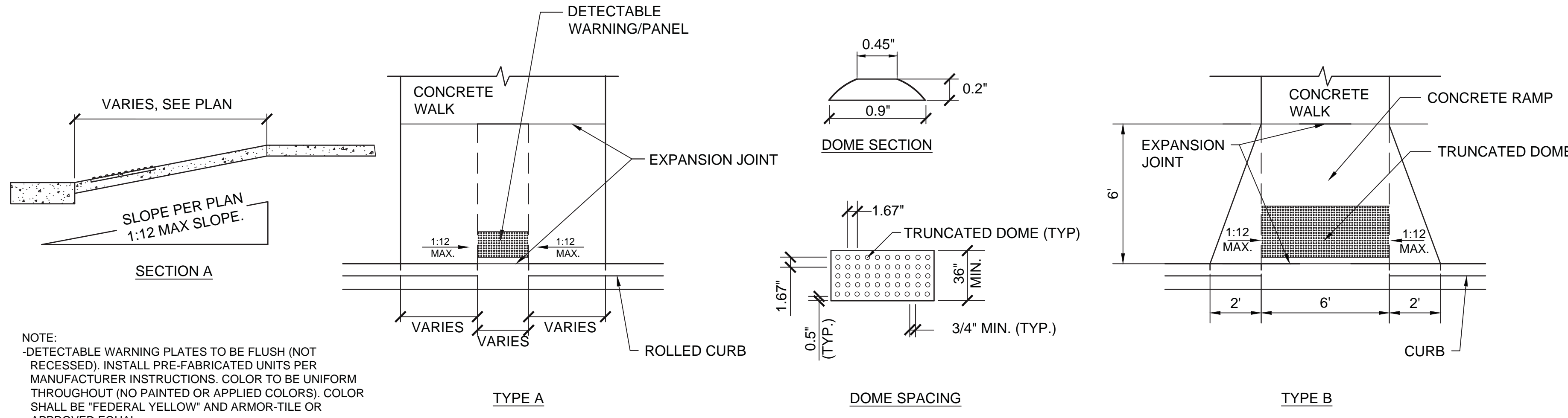
EXPANSION JOINT

CONCRETE REINFORCEMENT PER ASSOCIATED PAVEMENT SECTION (TYP.)

JOINT SEALER CONFORMING TO ASTM D1850
BACKER ROD, 12 IN LONG #4 REBAR DOWELS @ 24" O.C. LOCATED HORIZONTALLY IN THE CENTER OF SLAB.
PREMOULDED EXPANSION JOINT FILLER CONFORMING TO ASTM D1751 OR D1752 (FULL DEPTH)

5 CONCRETE JOINTING TYPES

SCALE: NTS



NOTE:
DETECTABLE WARNING PLATES TO BE FLUSH (NOT RECESSED). INSTALL PRE-FABRICATED UNITS PER MANUFACTURER INSTRUCTIONS. COLOR TO BE UNIFORM THROUGHOUT (NO PAINTED OR APPLIED COLORS). COLOR SHALL BE "FEDERAL YELLOW" AND ARMOR-TILE OR APPROVED EQUAL.

6 PEDESTRIAN CURB RAMP

SCALE: NTS

BID SET

Revisions:	Date:

CONSULTANT

ARCHITECT/ENGINEER OF RECORD

13605 1st Ave. N, #100 Plymouth, MN 55441
P 763.412.4000 | F 763.412.4090 | ae-mn.com
Anderson Engineering of Minnesota, LLC | Proj # 15744

STAMP

I HEREBY CERTIFY THAT THE SEAL, SPECIFICATION, OR REPORT WAS PREPARED BY ME OR UNDER MY DIRECT SUPERVISION AND THAT I AM A DULY LICENSED PROFESSIONAL ENGINEER UNDER THE LAWS OF THE STATE OF MINNESOTA.

PRINT NAME: MICHAEL B. BRANDVOLD, PE
SIGNATURE: *Michael B. Brandvold*
DATE: 05/28/2021
ENGINEER LICENSE # 41258

Office of Construction and Facilities Management

VA U.S. Department of Veterans Affairs

Drawing Title: DETAILS 1

Approved:

Phase: 100% CONSTRUCTION DOCUMENTS

FULLY SPRINKLERED

Project Title: NWIHCs - CONSTRUCT AIR HANDLING TOWER

Location: OMAHA, NE

Issue Date: 05/28/21

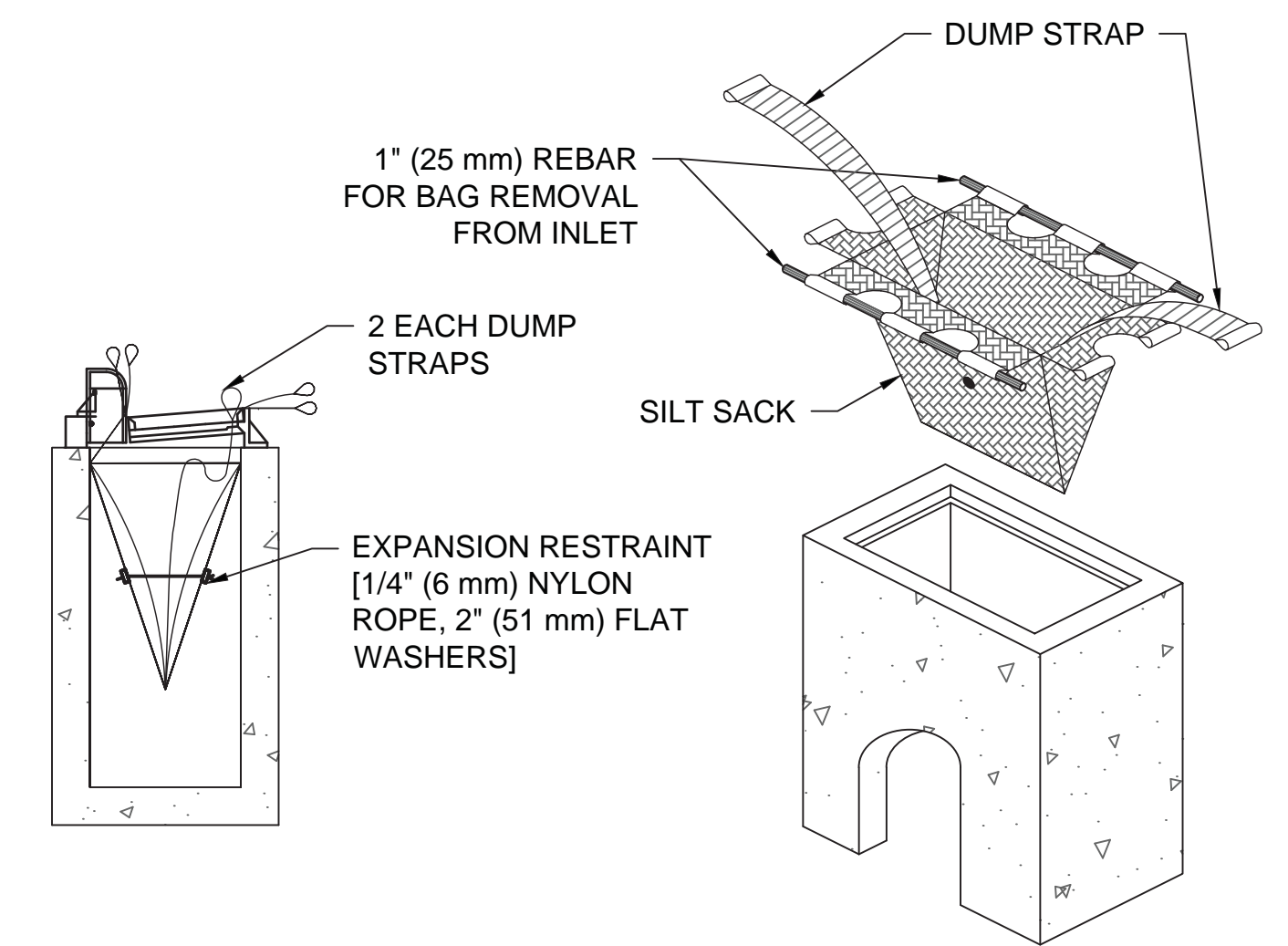
Checked: MB

Drawn: EF

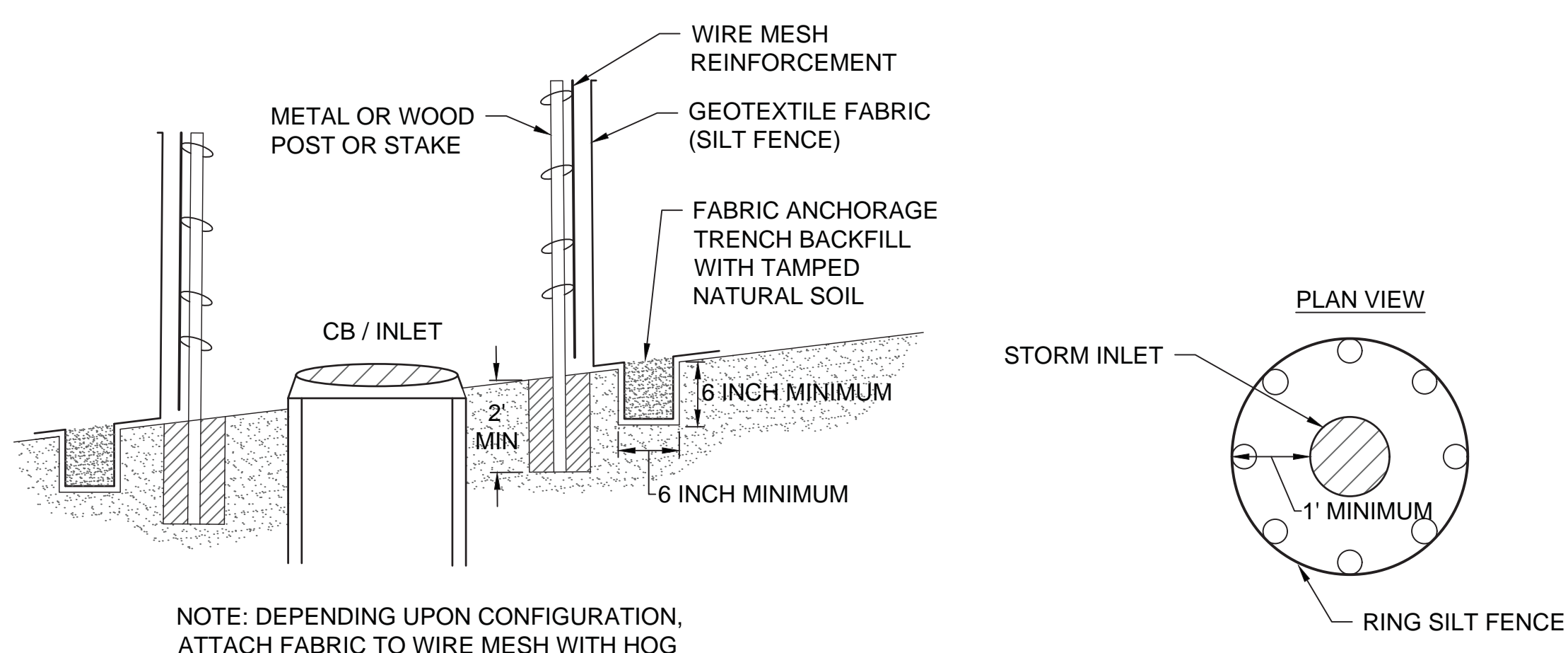
Project Number: 636-18-303

Building Number: 1

Drawing Number: C501



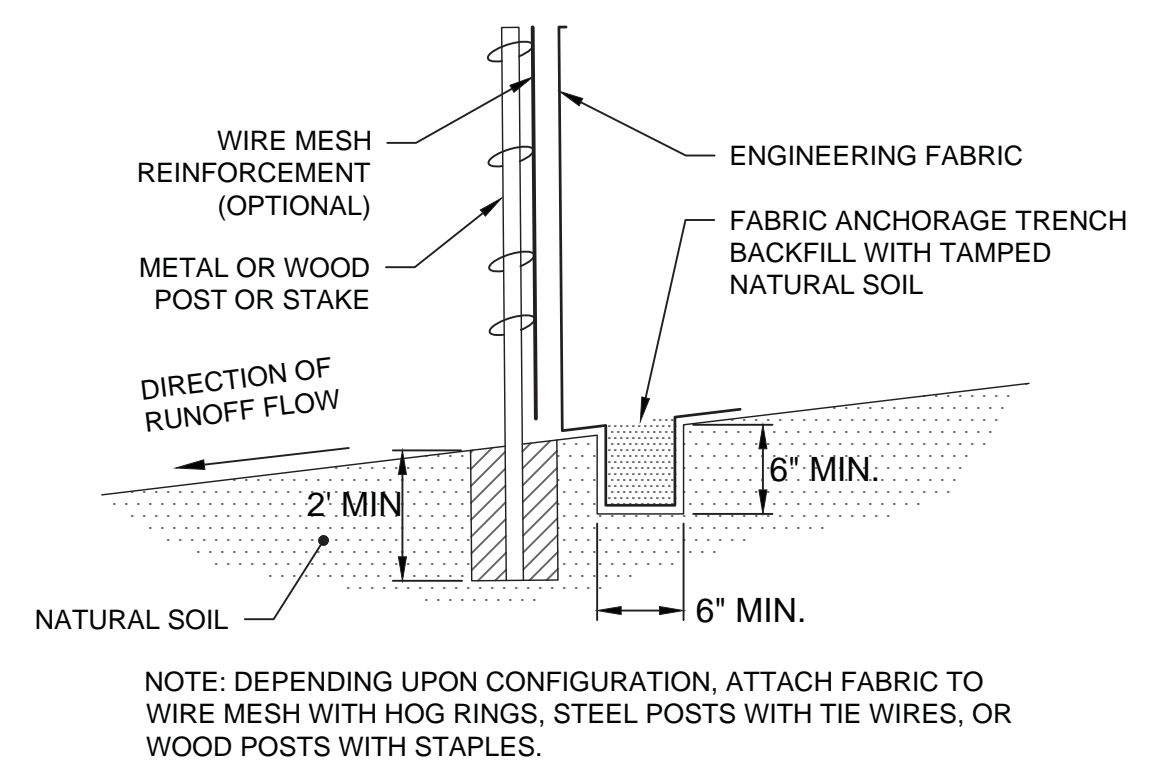
1 INLET PROTECTION SEDIMENT FILTER SACK
SCALE: NOT TO SCALE



NOTE: DEPENDING UPON CONFIGURATION, ATTACH FABRIC TO WIRE MESH WITH HOG RINGS, STEEL POSTS WITH TIE WIRES, OR WOOD POSTS WITH STAPLES.

TYPICAL INSTALLATION

2 STORM DRAIN INLET PROTECTION - SILT FENCE
SCALE: NOT TO SCALE



NOTE: DEPENDING UPON CONFIGURATION, ATTACH FABRIC TO WIRE MESH WITH HOG RINGS, STEEL POSTS WITH TIE WIRES, OR WOOD POSTS WITH STAPLES.

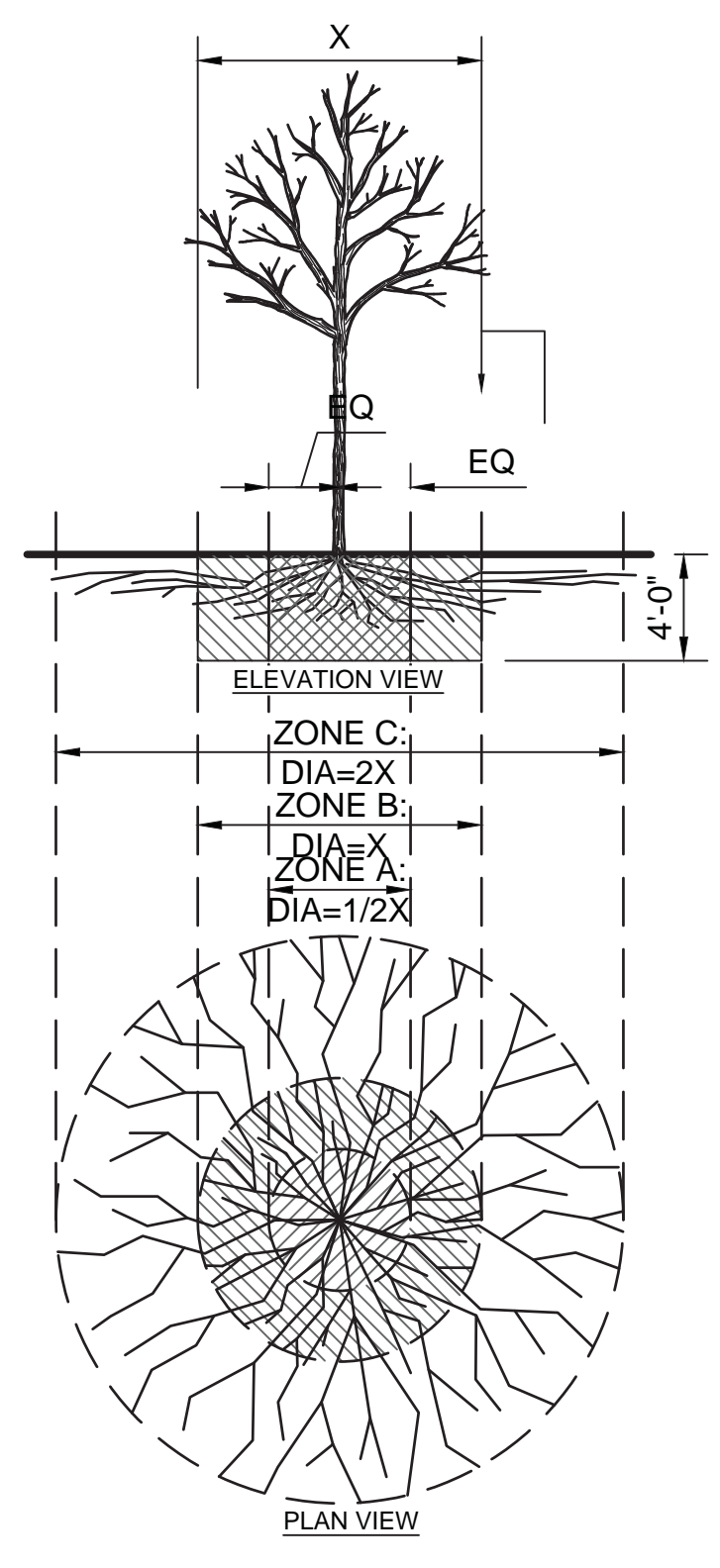
TYPICAL INSTALLATION

3 SILT FENCE / EROSION CONTROL FENCE
SCALE: NOT TO SCALE

FENCING/ROOT PROTECTION
48\"/>

THE ENGINEER'S APPROVAL IS REQUIRED FOR USE/ACCESS WITHIN ZONE B. PERMISSION FOR USE/ACCESS REQUIRES SURFACE PROTECTION FOR ALL UNFENCED, UNPAVED SURFACES WITHIN ZONE B AT ALL TIMES.

* SURFACE PROTECTION MEASURES
1. MULCH LAYER, @ 6\"/>



4 TREE PROTECTION DETAIL
SCALE: NOT TO SCALE

TRENCHING / EXCAVATION

ZONE A (CRITICAL ROOT ZONE)
[DEFINED AS DRIPLINE DIAMETER MULTIPLIED BY 0.5]

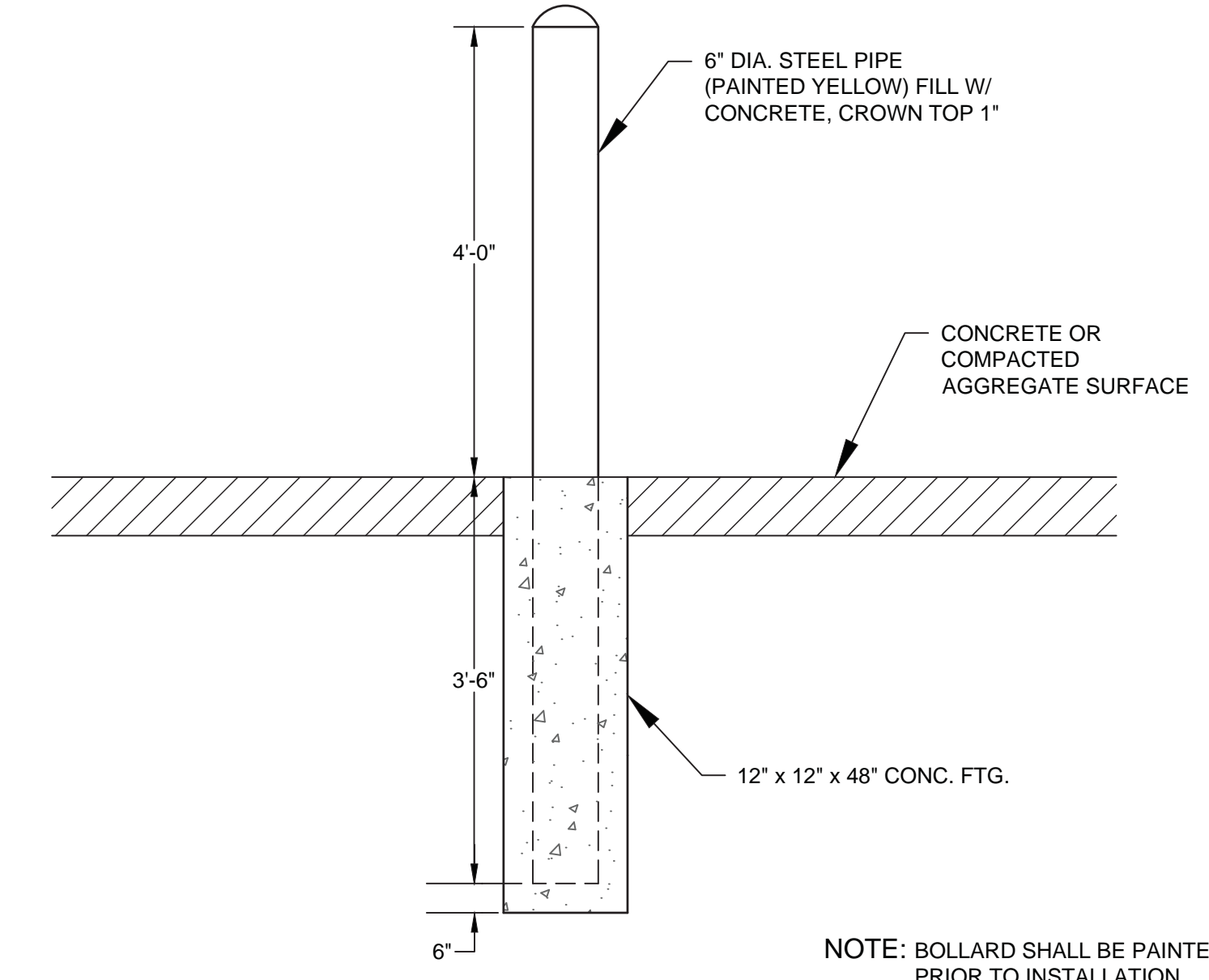
- NO DISTURBANCE ALLOWED WITHOUT SITE-SPECIFIC INSPECTION AND APPROVAL OF METHODS TO MINIMIZE ROOT DAMAGE
- SEVERANCE OF ROOTS LARGER THAN 2 INCHES IN DIAMETER REQUIRES AN ENGINEER'S APPROVAL
- TUNNELING REQUIRED TO INSTALL LINES 3 FEET BELOW GRADE OR DEEPER

ZONE B (DRIPLINE (DEFINE))
[MAXIMUM WIDTH OF BRANCH EXTENSION ON TREE]

- OPERATION OF HEAVY EQUIPMENT AND/OR STOCKPILING OF MATERIALS SUBJECT TO (SPECIFY INDIVIDUAL) APPROVAL
- SURFACE PROTECTION MEASURES REQUIRED TRENCHING ALLOWED AS FOLLOWS:
- EXCAVATION BY HAND OR WITH HAND-DRIVEN TRENCHER MAY BE REQUIRED
- LIMIT TRENCH WIDTH, DO NOT DISTURB ZONE A (CRITICAL ROOT ZONE) MAINTAIN 2/3 OR MORE OF ZONE B (DRIPLINE) IN UNDISTURBED CONDITION
- TUNNELING MAY BE REQUIRED FOR TRENCHES DEEPER THAN 3 FOOT
- USE OF PNEUMATIC AIR WAND AND EXCAVATION MAY BE CONSIDERED WHERE THE TRENCH DEPTH DOES NOT EXCEED 4 FEET

ZONE C (ABSORBING ROOT ZONE)
[DEFINED AS DRIPLINE DIAMETER MULTIPLIED BY 2.0]

- OPERATION OF HEAVY EQUIPMENT AND OR STOCKPILING OF MATERIALS SUBJECT TO (SPECIFY INDIVIDUAL) APPROVAL
- SURFACE PROTECTION MEASURES MAY BE REQUIRED AND IS TO BE DETERMINED BY (SPECIFY INDIVIDUAL) TRENCHING WITH HEAVY EQUIPMENT ALLOWED AS FOLLOWS:
- MINIMIZE TRENCH WIDTH
- MAINTAIN 2/3 OR MORE OF ZONE C IN UNDISTURBED CONDITION
- OR AS SPECIFIED BY (SPECIFY INDIVIDUAL)



NOTE: BOLLARD SHALL BE PAINTED PRIOR TO INSTALLATION

5 BOLLARDS DETAIL
SCALE: NOT TO SCALE

Revisions:	Date:

CONSULTANT

ARCHITECT/ENGINEER OF RECORD

13605 1st Ave. N. #100 Plymouth, MN 55441
P 763.412.4000 | F 763.412.4090 | ae-mn.com
Anderson Engineering of Minnesota, LLC | Proj # 15744

STAMP

HEREBY CERTIFY THAT THIS PLAN, SPECIFICATION OR REPORT WAS PREPARED BY ME OR UNDER MY DIRECT SUPERVISION AND THAT I AM A LICENSED PROFESSIONAL ENGINEER UNDER THE LAWS OF THE STATE OF MINNESOTA.

PRINT NAME: MICHAEL B. BRANDVOLD, PE
SIGNATURE: *Michael B. Brandvold*
DATE: 05/28/2021
ENGINEER LICENSE # 41256

Office of Construction and Facilities Management

Drawing Title: DETAILS 2

Approved: _____

Phase: 100% CONSTRUCTION DOCUMENTS

FULLY SPRINKLERED

Project Title: NWIHCS - CONSTRUCT AIR HANDLING TOWER

Location: OMAHA, NE

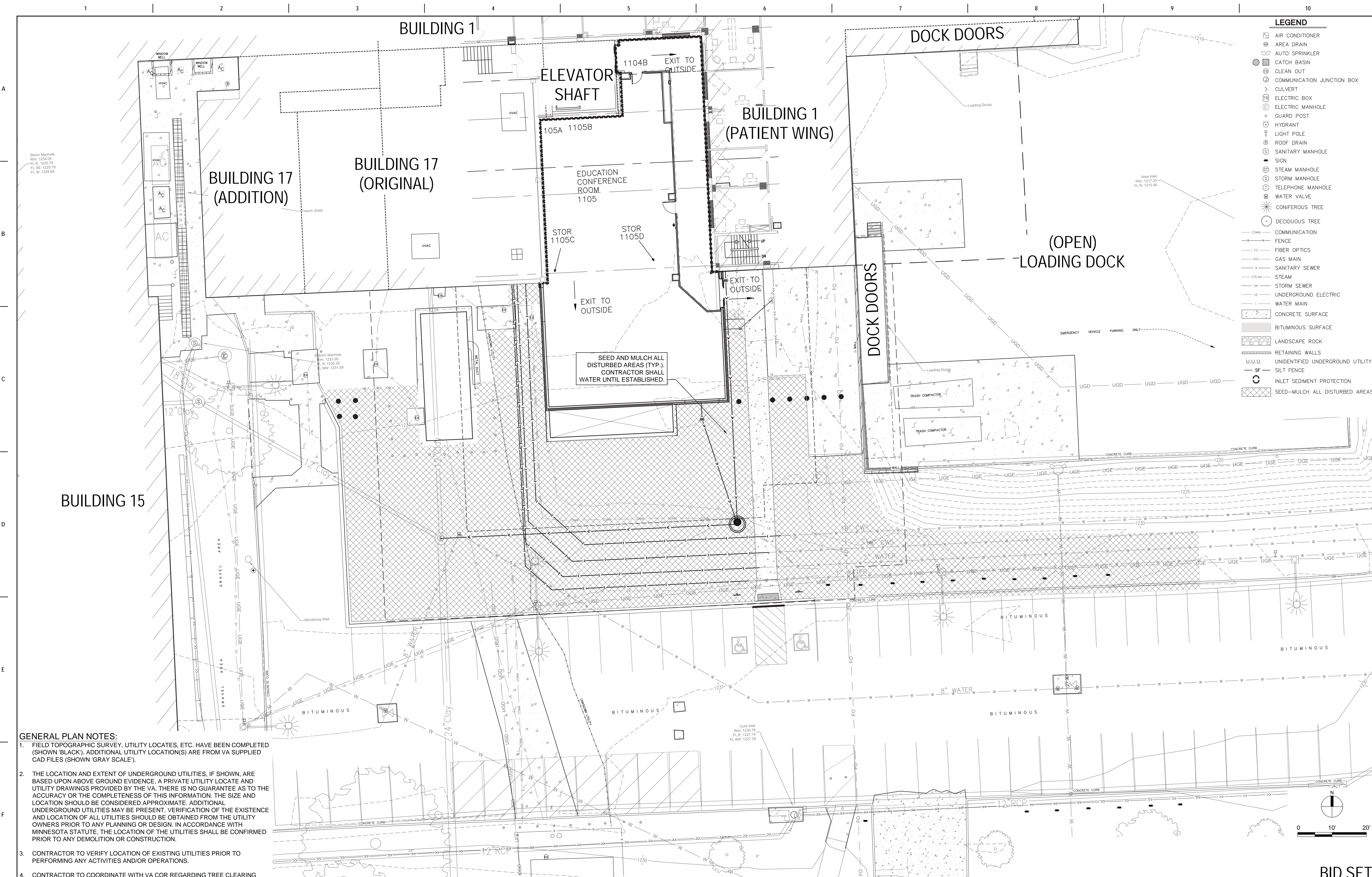
Issue Date: 05/28/21	Checked: MB	Drawn: EF
----------------------	-------------	-----------

Project Number: 636-18-303

Building Number: 1

Drawing Number: C502

BID SET



- GENERAL PLAN NOTES:**
1. FIELD TOPOGRAPHIC SURVEY, UTILITY LOCATES, ETC. HAVE BEEN COMPLETED (SHOWN 'BLACK'). ADDITIONAL UTILITY LOCATION(S) ARE FROM VA SUPPLIED CAD FILES (SHOWN 'GRAY SCALE').
 2. THE LOCATION AND EXTENT OF UNDERGROUND UTILITIES, IF SHOWN, ARE BASED UPON ABOVE GROUND EVIDENCE, A PRIVATE UTILITY LOCATE AND UTILITY DRAWINGS PROVIDED BY THE VA. THERE IS NO GUARANTEE AS TO THE ACCURACY OR THE COMPLETENESS OF THIS INFORMATION. THE SIZE AND LOCATION SHOULD BE CONSIDERED APPROXIMATE. ADDITIONAL UNDERGROUND UTILITIES MAY BE PRESENT. VERIFICATION OF THE EXISTENCE AND LOCATION OF ALL UTILITIES SHOULD BE OBTAINED FROM THE UTILITY OWNERS PRIOR TO ANY PLANNING OR DESIGN. IN ACCORDANCE WITH MINNESOTA STATUTE, THE LOCATION OF THE UTILITIES SHALL BE CONFIRMED PRIOR TO ANY DEMOLITION OR CONSTRUCTION.
 3. CONTRACTOR TO VERIFY LOCATION OF EXISTING UTILITIES PRIOR TO PERFORMING ANY ACTIVITIES AND/OR OPERATIONS.
 4. CONTRACTOR TO COORDINATE WITH VA COR REGARDING TREE CLEARING THREATENED AND ENDANGERED SPECIES CALENDAR RESTRICTIONS.

Revisions:	Date:

CONSULTANT

ARCHITECT/ENGINEER OF RECORD

13605 1st Ave. N. #100 Plymouth, MN 55441
 P 763.412.4000 | F 763.412.4090 | ae-mn.com
 Anderson Engineering of Minnesota, LLC | Proj # 15744

STAMP

HEREBY CERTIFY THAT THIS PLAN, SPECIFICATION, OR REPORT WAS PREPARED BY ME OR UNDER MY DIRECT SUPERVISION AND THAT I AM A LICENSED PROFESSIONAL ENGINEER UNDER THE LAWS OF THE STATE OF MINNESOTA.

PRINT NAME: MICHAEL B. BRANDVOLD, PE
 SIGNATURE: *Michael B. Brandvold*
 DATE: 05/28/2021 ENGINEER LICENSE # 41258

Office of Construction and Facilities Management
 VA U.S. Department of Veterans Affairs

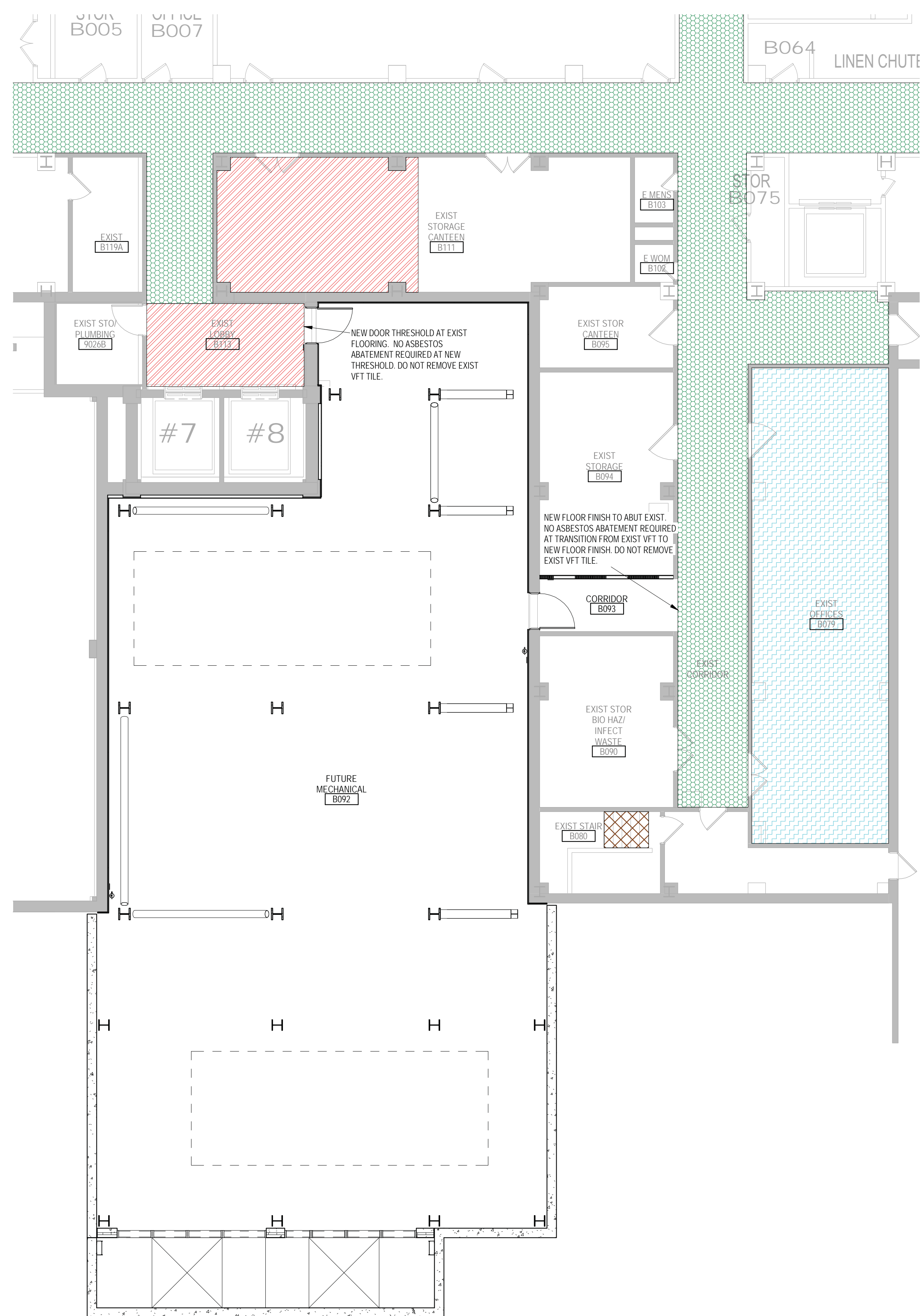
Drawing Title
LANDSCAPING PLAN
 Approved:

Phase
100% CONSTRUCTION DOCUMENTS
FULLY SPRINKLERED

Project Title
NWIHCS - CONSTRUCT AIR HANDLING TOWER
 Location
OMAHA, NE
 Issue Date
05/28/21
 Checked
MB
 Drawn
EF

BID SET

Project Number
636-18-303
 Building Number
1
 Drawing Number
L101



1 BASEMENT LEVEL ASBESTOS ID AND ABATEMENT PLAN
1/8" = 1'-0"



2 SECOND LEVEL ASBESTOS ID AND ABATEMENT PLAN
1/8" = 1'-0"

GENERAL NOTES - HAZ MATERIALS

- THE INTENT OF THE HAZARDOUS MATERIAL ASBESTOS PLANS IS TO IDENTIFY LOCATIONS OF KNOWN ASBESTOS CONTAINING MATERIALS WITHIN OR IMMEDIATELY ADJACENT TO AREAS OF WORK FOR THIS PROJECT AND NOTED AREAS THAT WILL REQUIRE ABATEMENT.
- REFER TO THE VA PROVIDED FACILITY WIDE ASBESTOS PLANS, PROVIDED TO ANDERSON ENGINEERING ON SEPTEMBER 13TH, 2020 INCLUDED AS AN ATTACHMENT TO THE SPECIFICATIONS.
- REFER TO SPECIFICATION SECTION 02833.13 GLOVEBAG ASBESTOS ABATEMENT AND 02833.13 LEAD-BASED PAINT REMOVAL AND DISPOSAL.
- NO LEAD CONTAINING MATERIALS HAVE BEEN IDENTIFIED BY THE OWNER OR ARCHITECT AT THE TIME THESE DOCUMENTS WERE CREATED. NO KNOWN LEAD CONTAINING MATERIALS ARE PRESENT OR ANTICIPATED TO REQUIRE REMOVAL/DISPOSAL AT THIS TIME. CONTRACTOR TO NOTIFY THE VA IF ANY DISCOVERIES OF LEAD CONTAINING MATERIALS ARE IDENTIFIED IN THE FIELD. SPECIFICATION 02833.13 HAS BEEN PROVIDED IN THE EVENT SUCH MATERIAL IS DISCOVERED DUE TO THE AGE OF THE ORIGINAL BUILDING.
- NO KNOWN HAZARDOUS MATERIAL PROJECT VICINITY ON LEVELS ONE, FOUR, FIVE, SIX, SEVEN, AND TEN INTERACTION WITH OR ASBESTOS ABATEMENT EFFORTS ARE NOT ANTICIPATED ON THESE LEVELS. NO HAZARDOUS PLANS PROVIDED FOR THESE LEVELS FOR THIS REASON.

HAZARDOUS MATERIALS LEGEND

	ASBESTOS CONTAINING THERMAL INSUL MAY EXIST ON MECH LINES INSIDE FINISHED INTERIOR WALLS AND CEILINGS
	ASBESTOS CONTAINING, NON-FRABLE, CATEGORY 1, RESIDUAL BLACK HALLWAY FLOORING MASTIC
	ASBESTOS CONTAINING, NON-FRABLE, CATEGORY 1, 12"X12" VFT & MASTIC, WHITE W/ BLACK & RED SPOTTED
	ASBESTOS CONTAINING, NON-FRABLE, CATEGORY 1, 12"X12" VFT, WHITE W/ YELLOW SPOTTED (MASTIC ONLY)
	ASBESTOS CONTAINING, NON-FRABLE, CATEGORY 1, 12"X12" VFT, GRAY (MASTIC ONLY)
	ASBESTOS CONTAINING, NON-FRABLE, CATEGORY 1, 9" X 9" VFT & MASTIC, WHITE W/ DARK BROWN
	ASBESTOS CONTAINING, NON-FRABLE, CATEGORY 1, 9" X 9" VFT & MASTIC
	AREA REQUIRES ASBESTOS ABATEMENT

NOTE: NOT ALL SYMBOLS MAY BE USED ON EACH PLAN

C:\Users\Public\Documents\Revit\Projects\15744-R19_juchtemingm@ae-mn.com.rvt 5/27/2021 10:28:18 AM

Revisions:	Date:

CONSULTANT 	ARCHITECT/ENGINEER OF RECORD 13605 1st Ave. N. #100 Plymouth, MN 55441 P 763.412.4000 F 763.412.4090 ae-mn.com Anderson Engineering of Minnesota, LLC Proj # 15744		Office of Construction and Facilities Management U.S. Department of Veterans Affairs	Drawing Title BASEMENT AND SECOND LEVEL HAZ MAT ASBESTOS	Phase 100% CONSTRUCTION DOCUMENTS	Project Title NWHCS - CONSTRUCT AIR HANDLING TOWER	Project Number 636-18-303
				Approved:	FULLY SPRINKLERED	Location OMAHA, NE	Building Number 1

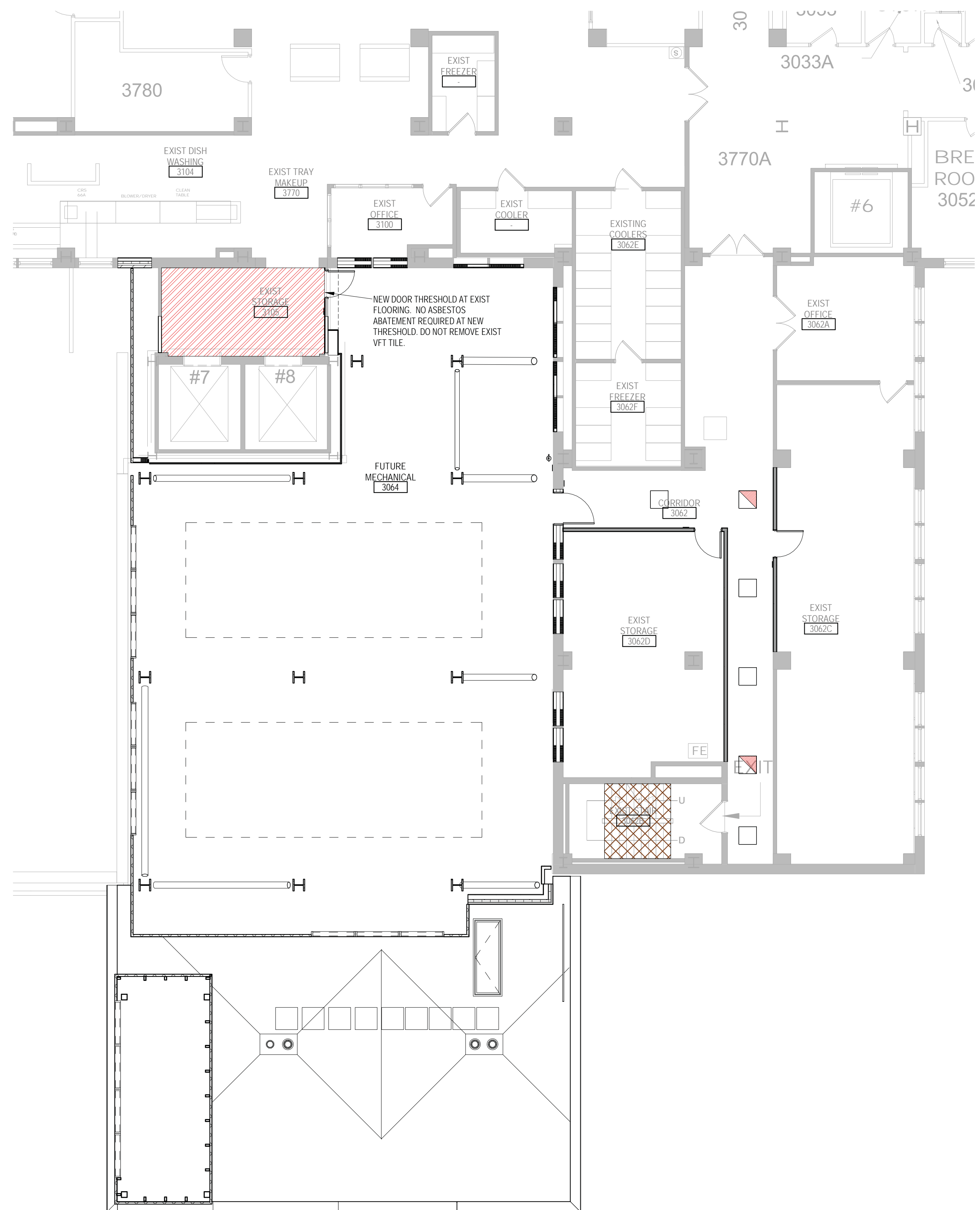
BID SET

- ### GENERAL NOTES - HAZ MATERIALS
1. THE INTENT OF THE HAZARDOUS MATERIAL ASBESTOS PLANS IS TO IDENTIFY LOCATIONS OF KNOWN ASBESTOS CONTAINING MATERIALS WITHIN OR IMMEDIATELY ADJACENT TO AREAS OF WORK FOR THIS PROJECT AND NOTED AREAS THAT WILL REQUIRE ABATEMENT.
 2. REFER TO THE VA PROVIDED FACILITY WIDE ASBESTOS PLANS. PROVIDED TO ANDERSON ENGINEERING ON SEPTEMBER 13TH, 2020 INCLUDED AS AN ATTACHMENT TO THE SPECIFICATIONS.
 3. REFER TO SPECIFICATION SECTION 020213.13 GLOVE BAG ASBESTOS ABATEMENT AND 02833.13 LEAD-BASED PAINT REMOVAL AND DISPOSAL.
 4. NO LEAD CONTAINING MATERIALS HAVE BEEN IDENTIFIED BY THE OWNER OR ARCHITECT AT THE TIME THESE DOCUMENTS WERE CREATED. NO KNOWN LEAD CONTAINING MATERIALS ARE PRESENT OR ANTICIPATED TO REQUIRE REMOVAL/DISPOSAL AT THIS TIME. CONTRACTOR TO NOTIFY THE VA IF ANY DISCOVERIES OF LEAD CONTAINING MATERIALS ARE IDENTIFIED IN THE FIELD. SPECIFICATION 02833.13 HAS BEEN PROVIDED IN THE EVENT SUCH MATERIAL IS DISCOVERED DUE TO THE AGE OF THE ORIGINAL BUILDING.
 5. NO KNOWN HAZARDOUS MATERIAL IN PROJECT VICINITY ON LEVELS ONE, FOUR, FIVE, SIX, SEVEN, AND TEN. INTERACTION WITH OR ASBESTOS ABATEMENT EFFORTS ARE NOT ANTICIPATED ON THESE LEVELS. NO HAZARDOUS PLANS PROVIDED FOR THESE LEVELS FOR THIS REASON.

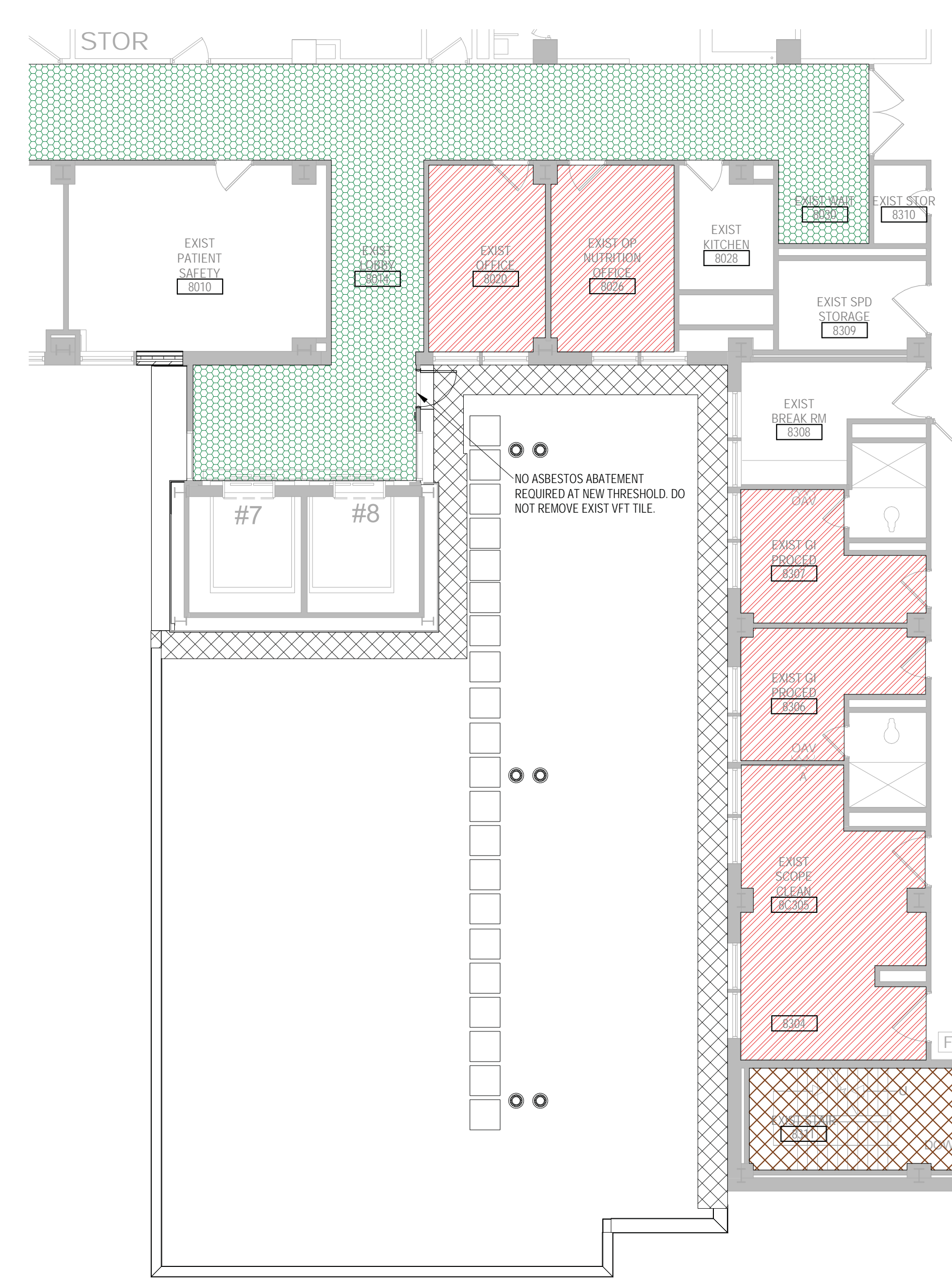
HAZARDOUS MATERIALS LEGEND

	ASBESTOS CONTAINING THERMAL INSUL MAY EXIST ON MECH LINES INSIDE FINISHED INTERIOR WALLS AND CEILINGS
	ASBESTOS CONTAINING, NON-FRIBBLE, CATEGORY 1, RESIDUAL BLACK WALL/WAY FLOORING/MASTIC
	ASBESTOS CONTAINING, NON-FRIBBLE, CATEGORY 1, 12'X12' VFT & MASTIC, WHITE W/ BLACK & RED SPOTTED
	ASBESTOS CONTAINING, NON-FRIBBLE, CATEGORY 1, 12'X12' VFT, WHITE W/ YELLOW SPOTTED (MASTIC ONLY)
	ASBESTOS CONTAINING, NON-FRIBBLE, CATEGORY 1, 12'X12' VFT, GRAY (MASTIC ONLY)
	ASBESTOS CONTAINING, NON-FRIBBLE, CATEGORY 1, 9' X 9' VFT & MASTIC, WHITE W/ DARK BROWN
	ASBESTOS CONTAINING, NON-FRIBBLE, CATEGORY 1, 9' X 9' VFT & MASTIC
	AREA REQUIRES ASBESTOS ABATEMENT

NOTE: NOT ALL SYMBOLS MAY BE USED ON EACH PLAN



1 THIRD LEVEL ASBESTOS ID AND ABATEMENT PLAN
1/8" = 1'-0"



ALT DEDUCT #1:
OMIT CONSTRUCTION OF THE SEVENTH FLOOR. ROOF LEVEL AT SEVENTH FLOOR. REFER TO AE208 FOR THE REVISED SCOPE OF WORK APPLICABLE TO THE SEVENTH FLOOR LEVEL. THE SCOPE OF WORK FOR THE FIFTH AND SIXTH FLOOR REMAINS UNCHANGED. NO PROJECT SCOPE OF WORK REQUIRED ON THE EIGHTH FLOOR.

ALT DEDUCT #2:
OMIT CONSTRUCTION OF THE SIXTH AND SEVENTH FLOORS. ROOF LEVEL AT SIXTH FLOOR. REFER TO AE208 FOR THE REVISED SCOPE OF WORK APPLICABLE TO THE SIXTH FLOOR LEVEL. NO PROJECT SCOPE OF WORK REQUIRED ON THE SEVENTH OR EIGHTH FLOOR.

ALT DEDUCT #3:
OMIT CONSTRUCTION OF THE FIFTH, SIXTH AND SEVENTH FLOORS. ROOF LEVEL AT FIFTH FLOOR. REFER TO AE208 FOR THE REVISED SCOPE OF WORK APPLICABLE TO THE FIFTH FLOOR LEVEL. NO PROJECT SCOPE OF WORK REQUIRED ON THE SIXTH, SEVENTH OR EIGHTH FLOOR.

2 EIGHTH LEVEL ASBESTOS ID AND ABATEMENT PLAN
1/8" = 1'-0"

C:\Users\Public\Documents\Revit Projects\1744-R19_Juchemhagen@aem.com.rvt 5/27/2021 10:28:51 AM

Revisions:	Date:

CONSULTANT 	ARCHITECT/ENGINEER OF RECORD 13605 1st Ave. N. #100 Plymouth, MN 55441 P 763.412.4000 F 763.412.4090 ae-mn.com Anderson Engineering of Minnesota, LLC Proj # 15744		Office of Construction and Facilities Management U.S. Department of Veterans Affairs	Drawing Title THIRD AND EIGHTH LEVEL HAZ MAT ASBESTOS	Phase 100% CONSTRUCTION DOCUMENTS	Project Title NWIHCS - CONSTRUCT AIR HANDLING TOWER	Project Number 636-18-303
				Approved:	Fully Sprinklered FULLY SPRINKLERED	Location OMAHA, NE	Building Number 1
						Issue Date 05/28/21	Drawing Number HA103
						Checked LA	
						Drawn CM	

BID SET