



U.S. Department of Veterans Affairs
Veterans Health Administration

PROJECT NAME:

NWIHCS - CONSTRUCT AIR HANDLING TOWER

SITE ADDRESS:

4101 WOOLWORTH AVE, OMAHA, NE 68105

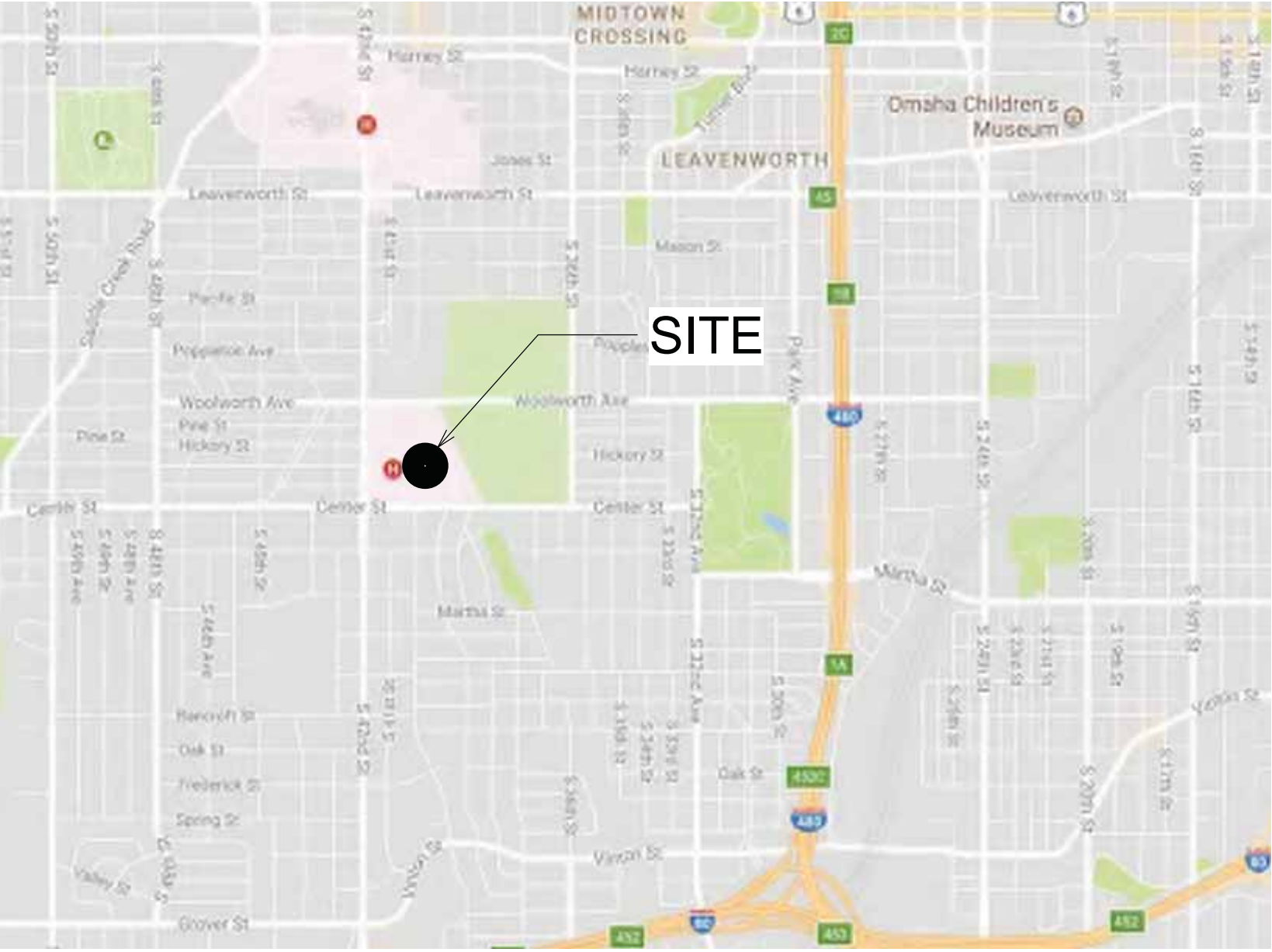
VA PROJECT NUMBER:

636-18-303

OWNER AND CONSULTANTS:

VA COR	STRUCTURAL ENGINEER:	TECHNOLOGY ENGINEER:
CONTACT: AMANDA HOMAN	NAME: IMEG CORP.	NAME: IMEG CORP.
ADDRESS: 4101 WOOLWORTH AVE OMAHA, NE 68105	ADDRESS: 2882 106TH STREET DES MOINES, IA 50322	ADDRESS: 2882 106TH STREET DES MOINES, IA 50322
PHONE: (402) 995-5971	CONTACT: ALEX CARNAHAN	CONTACT: DAMON DEEN
	PHONE: 515-334-7936	PHONE: 515-334-4329
ARCHITECT AND COORDINATING PROFESSIONAL:	MECHANICAL/PLUMBING/FIRE PROTECTION ENGINEER:	
NAME: ANDERSON ENGINEERING OF MN, LLC	NAME: IMEG CORP.	
ADDRESS: 13605 1ST AVE NORTH, SUITE 100 PLYMOUTH, MN 55441	ADDRESS: 2882 106TH STREET DES MOINES, IA 50322	
CONTACT: THOMAS OLESAK	CONTACT: ERIC HENDERSON	
PHONE: 763-412-4000	PHONE: 630-717-2433	
CIVIL ENGINEER:	ELECTRICAL ENGINEER:	
NAME: ANDERSON ENGINEERING OF MN, LLC	NAME: IMEG CORP.	
ADDRESS: 13605 1ST AVE NORTH, SUITE 100 PLYMOUTH, MN 55441	ADDRESS: 2882 106TH STREET DES MOINES, IA 50322	
CONTACT: MIKE BRANDVOLD	CONTACT: KRISTEN SPINA	
PHONE: 763-412-4000	PHONE: 515-629-3041	

VICINITY MAP:

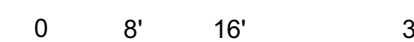


BID SET

<div>Revisions:</div> <div>Date:</div>	CONSULTANT	ARCHITECT/ENGINEER OF RECORD	<div>THOMAS OLESAK, AM THE COORDINATING PROFESSIONAL ON THE CONSTRUCT AIR HANDLING TOWER PROJECT.</div> <div>ARCHITECT</div> <div>THOMAS OLESAK</div> <div>5/28/21</div> <div>STATE OF NEBRASKA</div>	<div>Office of Construction and Facilities Management</div> <div>VA U.S. Department of Veterans Affairs</div>	Drawing Title	Phase	Project Title		Project Number
					COVER SHEET	100% CONSTRUCTION DOCUMENTS	NWIHCS - CONSTRUCT AIR HANDLING TOWER		636-18-303
		13605 1st Ave. N. #100 Plymouth, MN 55441 P 763.412.4000 F 763.412.4090 ae-mn.com Anderson Engineering of Minnesota, LLC Proj # 15744			Approved:	FULLY SPRINKLERED	Location OMAHA, NE		Building Number 1
							Issue Date 05/28/21	Checked LA	Drawn CM
									Drawing Number G1000

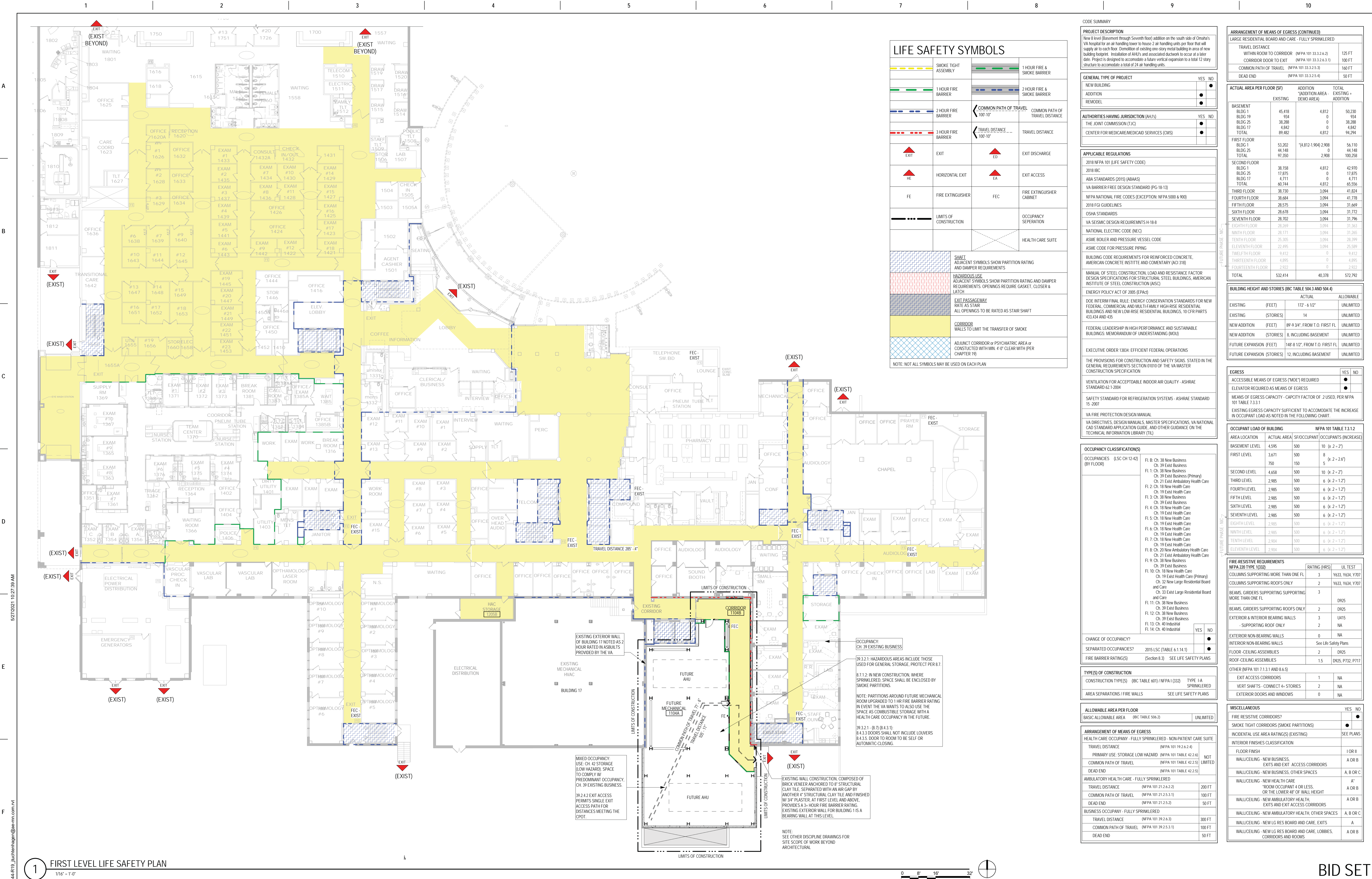
Drawing Number	GI001
----------------	-------

</



NOTE: NOT ALL SYMBOLS MAY BE USED ON EACH PLAN

BID SET



1

FIRST LEVEL LIFE SAFETY PLAN

1/16" = 1'-0"

CONSULTANT

Revisions:

Date:

ARCHITECT/ENGINEER OF RECORD

13605 1st Ave. N. #100 Plymouth, MN 55441
P 763.412.4000 | F 763.412.4090 | ae-mn.com
Anderson Engineering of Minnesota, LLC | Proj # 15744

Office of Construction and Facilities Management

U.S. Department of Veterans Affairs

Drawing Title

FIRST LEVEL LIFE SAFETY PLAN AND CODE SUMMARY

Approved:

Phase

100% CONSTRUCTION DOCUMENTS

FULLY SPRINKLERED

Project Title

NWIHCS - CONSTRUCT AIR HANDLING TOWER

Location

OMAHA, NE

Issue Date

05/28/21

Checked

LA

Drawn

CM

Project Number

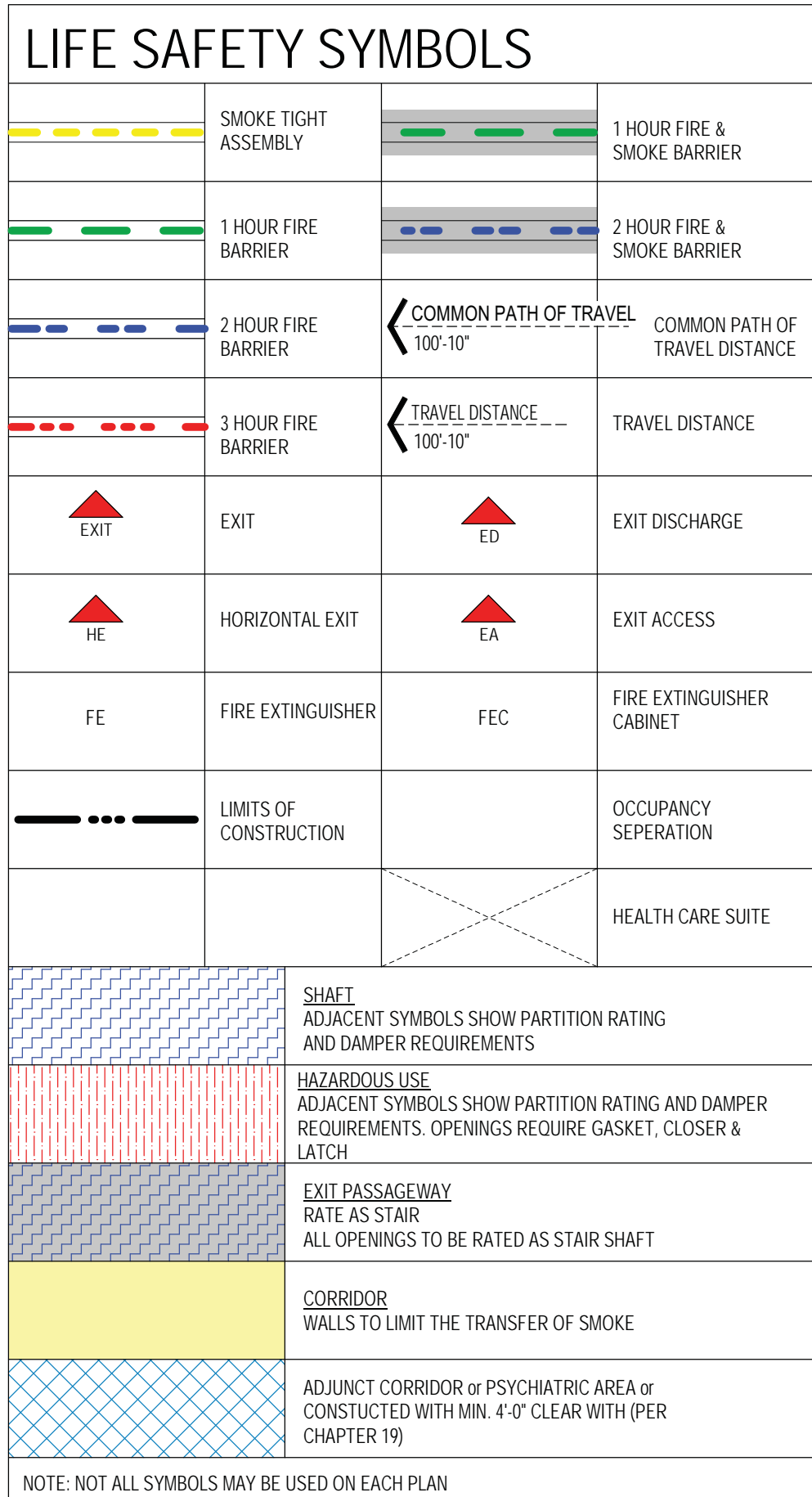
636-18-303

Building Number

1

Drawing Number

G1011



A graphic scale bar is shown below the plan view, with markings for 0, 8', 16', and 32'. To the right of the scale bar is a north arrow pointing upwards, represented by a circle with a vertical line through the center and a small arrowhead at the top.

Project Number	636-18-303
Building Number	1
Drawing Number	GI012

A

B

C

D

F

F

A

B

C

D

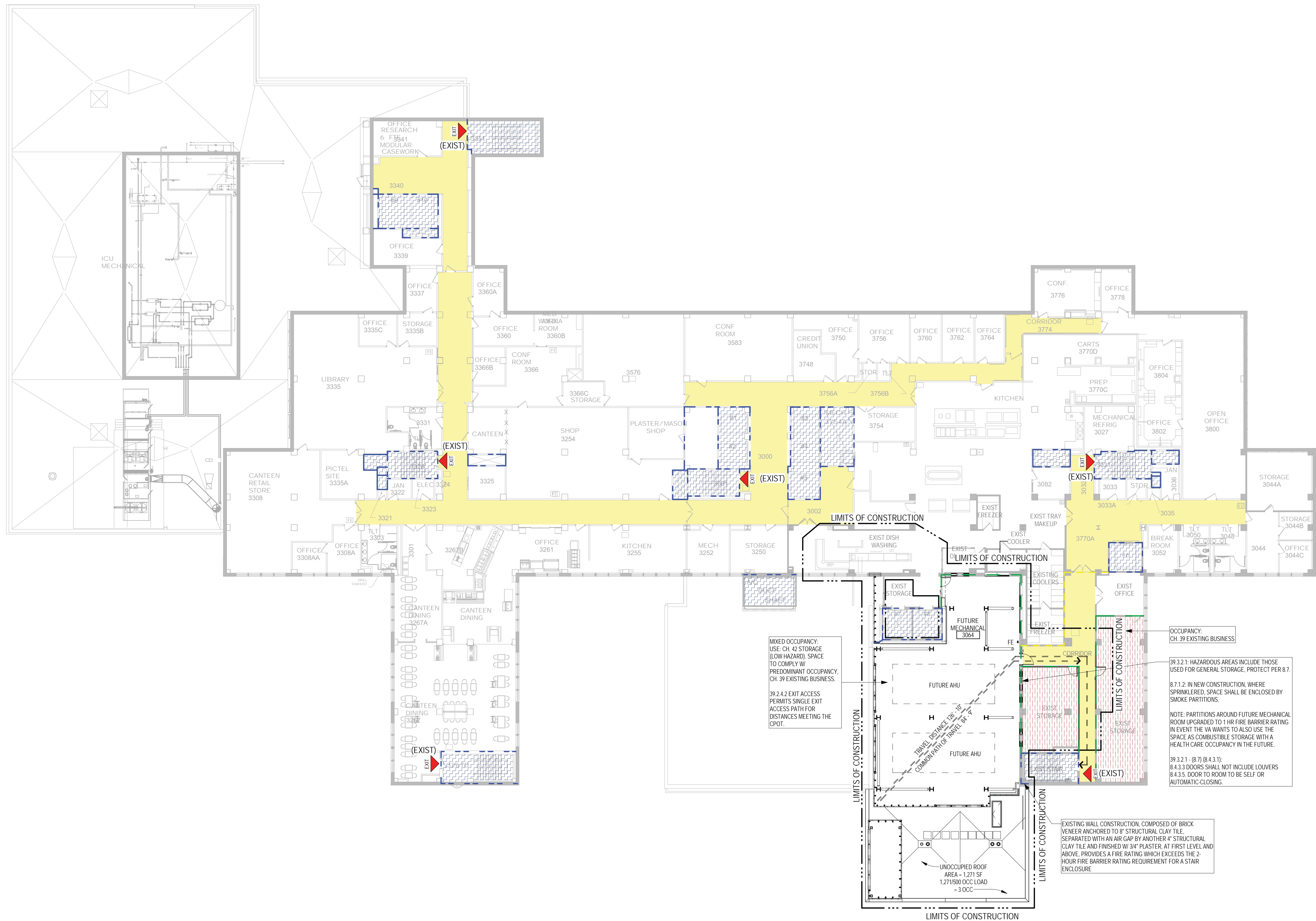
E

F

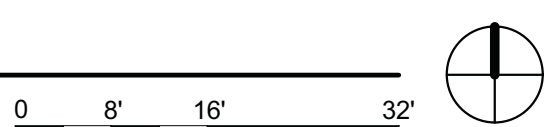
LIFE SAFETY SYMBOLS

	SMOKE TIGHT ASSEMBLY		1 HOUR FIRE & SMOKE BARRIER
	1 HOUR FIRE BARRIER		2 HOUR FIRE & SMOKE BARRIER
	2 HOUR FIRE BARRIER		COMMON PATH OF TRAVEL
	3 HOUR FIRE BARRIER		TRAVEL DISTANCE
	EXIT		EXIT DISCHARGE
	HORIZONTAL EXIT		EXIT ACCESS
	FIRE EXTINGUISHER		FIRE EXTINGUISHER CABINET
	LIMITS OF CONSTRUCTION		OCCUPANCY SEPARATION
			HEALTH CARE SUITE
	SHAFT		HAZARDOUS USE
	EXIT PASSAGE		CORRIDOR
	ADJUNCT CORRIDOR		ADJUNCT CORRIDOR

NOTE: NOT ALL SYMBOLS MAY BE USED ON EACH PLAN



1 THIRD LEVEL LIFE SAFETY PLAN
1/16" = 1'-0"



C:\Users\Public\Documents\Revit Projects\15744-R19_juchentmagn@ae-mn.com.rvt
5/27/2021 10:27:58 AM

Revisions:	Date:

CONSULTANT	ARCHITECT/ENGINEER OF RECORD	Drawing Title	Phase	Project Title	Project Number
		THIRD LEVEL LIFE SAFETY PLAN	100% CONSTRUCTION DOCUMENTS	NWIHCS - CONSTRUCT AIR HANDLING TOWER	636-18-303
		Approved:	FULLY SPRINKLERED	Location OMAHA, NE	Building Number 1
				Issue Date 05/28/21	Drawing Number GI013
				Checked LA	
				Drawn CM	

BID SET

A

B

C

D

E

F

5/27/2021 10:27:36 AM

C:\Users\Public\Documents\Revit Projects\1744-R19_juchentagm@aem.com.rvt

A

B

C

D

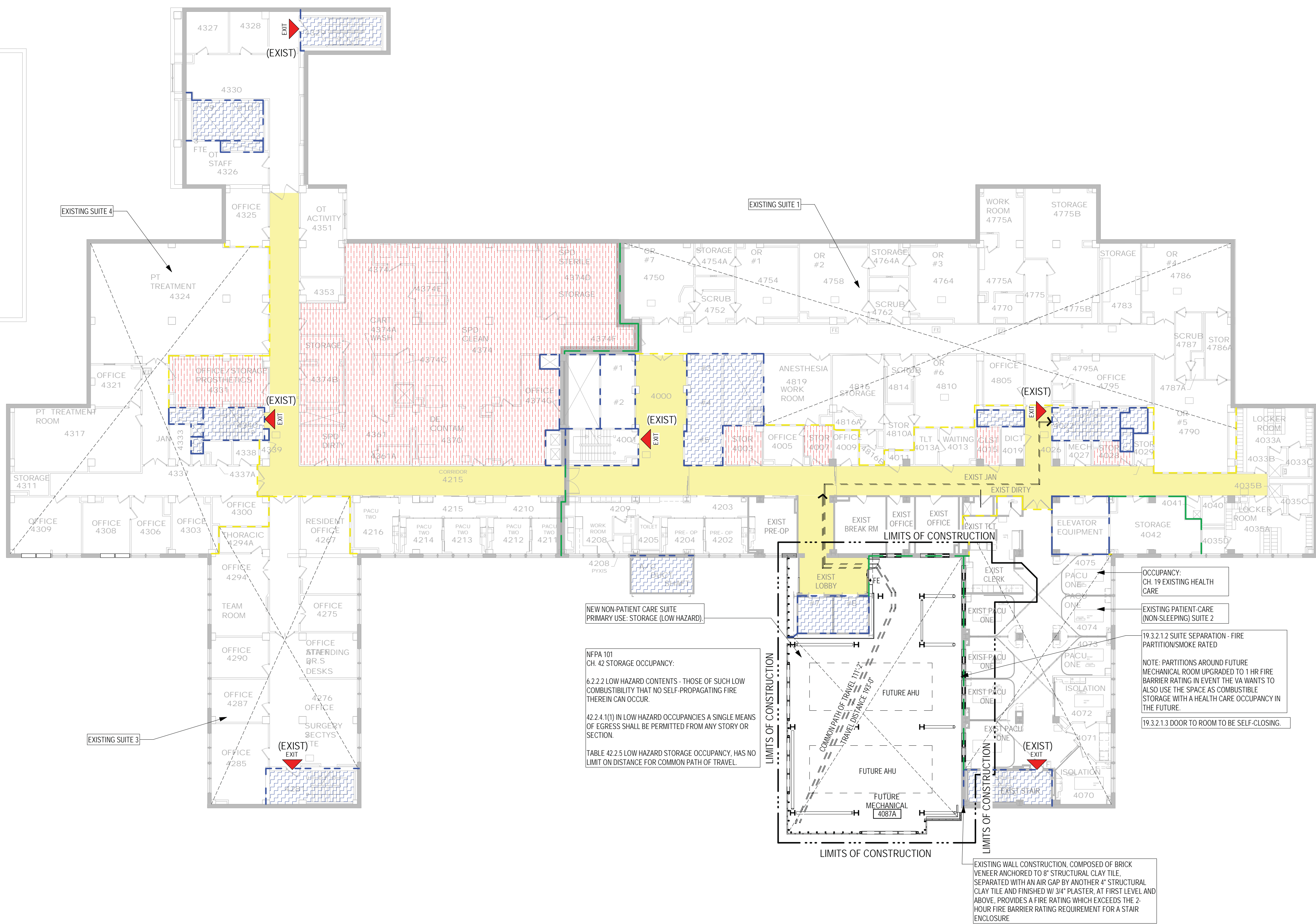
E

F

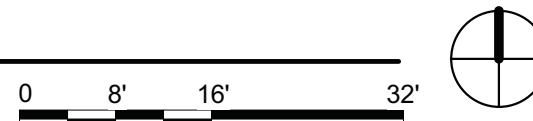
LIFE SAFETY SYMBOLS

	SMOKE TIGHT ASSEMBLY		1 HOUR FIRE & SMOKE BARRIER
	1 HOUR FIRE BARRIER		2 HOUR FIRE & SMOKE BARRIER
	2 HOUR FIRE BARRIER		COMMON PATH OF TRAVEL 100'-10'
	3 HOUR FIRE BARRIER		TRAVEL DISTANCE 100'-10'
	EXIT		EXIT DISCHARGE
	HORIZONTAL EXIT		EXIT ACCESS
	FIRE EXTINGUISHER		FIRE EXTINGUISHER CABINET
	LIMITS OF CONSTRUCTION		OCCUPANCY SEPERATION
	HEALTH CARE SUITE		
	SHAFT		ADJACENT SYMBOLS SHOW PARTITION RATING AND DAMPER REQUIREMENTS
	HAZARDOUS USE		ADJACENT SYMBOLS SHOW PARTITION RATING AND DAMPER REQUIREMENTS. OPENINGS REQUIRE GASKET, CLOSER & LATCH
	EXIT PASSAGEWAY		RATE AS STAIR
	CORRIDOR WALLS TO LIMIT THE TRANSFER OF SMOKE		
	ADJUNCT CORRIDOR or PSYCHIATRIC AREA or CONSTRUCTED WITH MIN. 4'-0" CLEAR WITH (PER CHAPTER 19)		

NOTE: NOT ALL SYMBOLS MAY BE USED ON EACH PLAN



1 FOURTH LEVEL LIFE SAFETY PLAN
1/16" = 1'-0"



Revisions:	Date:

CONSULTANT

ARCHITECT/ENGINEER OF RECORD

13605 1st Ave. N. #100 Plymouth, MN 55441
P 763.412.4000 | F 763.412.4090 | ae-mn.com
Anderson Engineering of Minnesota, LLC | Proj # 15744

I. THOMAS OLESAK, AM THE COORDINATING PROFESSIONAL ON THE CONSTRUCT AIR HANDLING TOWER PROJECT.

Office of Construction and Facilities Management

U.S. Department of Veterans Affairs

Drawing Title

FOURTH LEVEL LIFE SAFETY PLAN

Approved:

Phase

100% CONSTRUCTION DOCUMENTS

FULLY SPRINKLERED

Project Title

NWIHCS - CONSTRUCT AIR HANDLING TOWER

Location

OMAHA, NE

Issue Date

05/28/21

Checked

LA

Drawn

CM

Project Number

636-18-303

Building Number

1

Drawing Number

GI014

BID SET

A

B

C

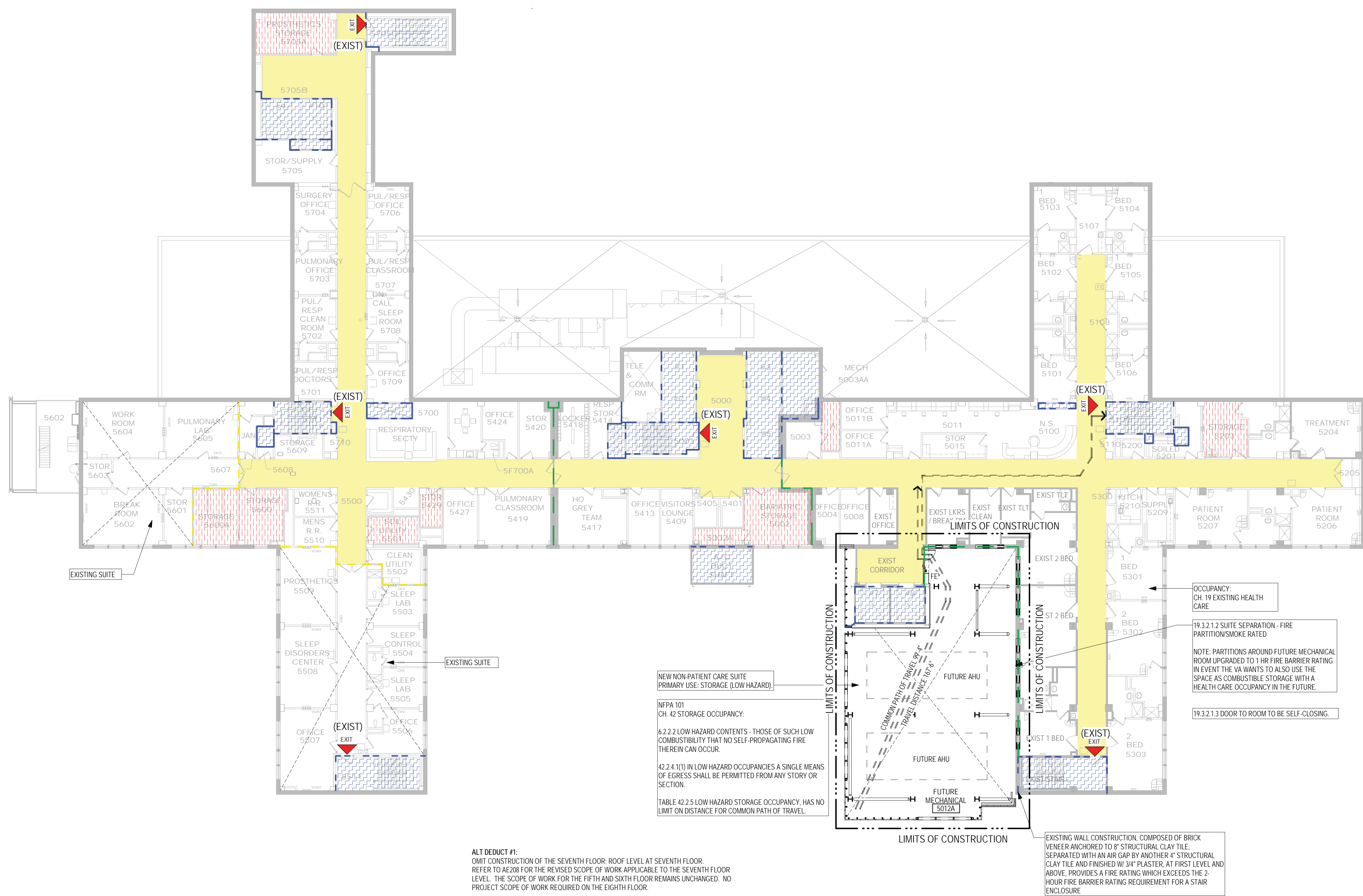
D

E

F

5/27/2024 10:28:01 AM

C:\Users\Public\Documents\Revit Projects\1744-R19_juchentmagn@ae-mn.com.rvt



LIFE SAFETY SYMBOLS			
	SMOKE TIGHT ASSEMBLY		1 HOUR FIRE & SMOKE BARRIER
	1 HOUR FIRE BARRIER		2 HOUR FIRE & SMOKE BARRIER
	2 HOUR FIRE BARRIER		COMMON PATH OF TRAVEL
	3 HOUR FIRE BARRIER		TRAVEL DISTANCE
	EXIT		EXIT DISCHARGE
	HORIZONTAL EXIT		EXIT ACCESS
	FIRE EXTINGUISHER		FIRE EXTINGUISHER CABINET
	LIMITS OF CONSTRUCTION		OCCUPANCY SEPERATION
			HEALTH CARE SUITE
	SUBJ. ADJACENT SYMBOLS SHOW PARTITION RATING AND DAMPER REQUIREMENTS		
	HAZARDOUS USE ADJACENT SYMBOLS SHOW PARTITION RATING AND DAMPER REQUIREMENTS. OPENINGS REQUIRE GASKET, CLOSER & LATCH		
	EXIT PASSAGEWAY RATE AS STAIR. ALL OPENINGS TO BE RATED AS STAIR SHAFT		
	CORRIDOR WALLS TO LIMIT THE TRANSFER OF SMOKE		
	ADJUNCT CORRIDOR or PSYCHIATRIC AREA or CONSTRUCTED WITH MIN. 4'-0" CLEAR WITH (PER CHAPTER 19)		
NOTE: NOT ALL SYMBOLS MAY BE USED ON EACH PLAN			

1 FIFTH LEVEL LIFE SAFETY PLAN
1/16" = 1'-0"



ALT DEDUCT #1:
OMIT CONSTRUCTION OF THE SEVENTH FLOOR; ROOF LEVEL AT SEVENTH FLOOR.
REFER TO A208 FOR THE REVISED SCOPE OF WORK APPLICABLE TO THE SEVENTH FLOOR LEVEL. THE SCOPE OF WORK FOR THE FIFTH AND SIXTH FLOOR REMAINS UNCHANGED. NO PROJECT SCOPE OF WORK REQUIRED ON THE EIGHTH FLOOR.

ALT DEDUCT #2:
OMIT CONSTRUCTION OF THE SIXTH AND SEVENTH FLOORS; ROOF LEVEL AT SIXTH FLOOR.
REFER TO A208 FOR THE REVISED SCOPE OF WORK APPLICABLE TO THE SIXTH FLOOR LEVEL. NO PROJECT SCOPE OF WORK REQUIRED ON THE SEVENTH OR EIGHTH FLOOR.

ALT DEDUCT #3:
OMIT CONSTRUCTION OF THE FIFTH, SIXTH AND SEVENTH FLOORS; ROOF LEVEL AT FIFTH FLOOR. REFER TO A208 FOR THE REVISED SCOPE OF WORK APPLICABLE TO THE FIFTH FLOOR LEVEL. NO PROJECT SCOPE OF WORK REQUIRED ON THE SIXTH, SEVENTH OR EIGHTH FLOOR.

Revisions:	Date:

CONSULTANT

ARCHITECT/ENGINEER OF RECORD

13605 1st Ave. N. #100 Plymouth, MN 55441
P 763.412.4000 | F 763.412.4090 | ae-mn.com
Anderson Engineering of Minnesota, LLC | Proj # 15744

I. THOMAS OLESAK, AM THE COORDINATING PROFESSIONAL ON THE CONSTRUCT AIR HANDLING TOWER PROJECT.

Office of Construction and Facilities Management

U.S. Department of Veterans Affairs

Drawing Title

FIFTH LEVEL LIFE SAFETY PLAN

Approved:

Phase

100% CONSTRUCTION DOCUMENTS

FULLY SPRINKLERED

Project Title

NWIHCS - CONSTRUCT AIR HANDLING TOWER

Location

OMAHA, NE

Issue Date

05/28/21

Checked

LA

Drawn

CM

Project Number

636-18-303

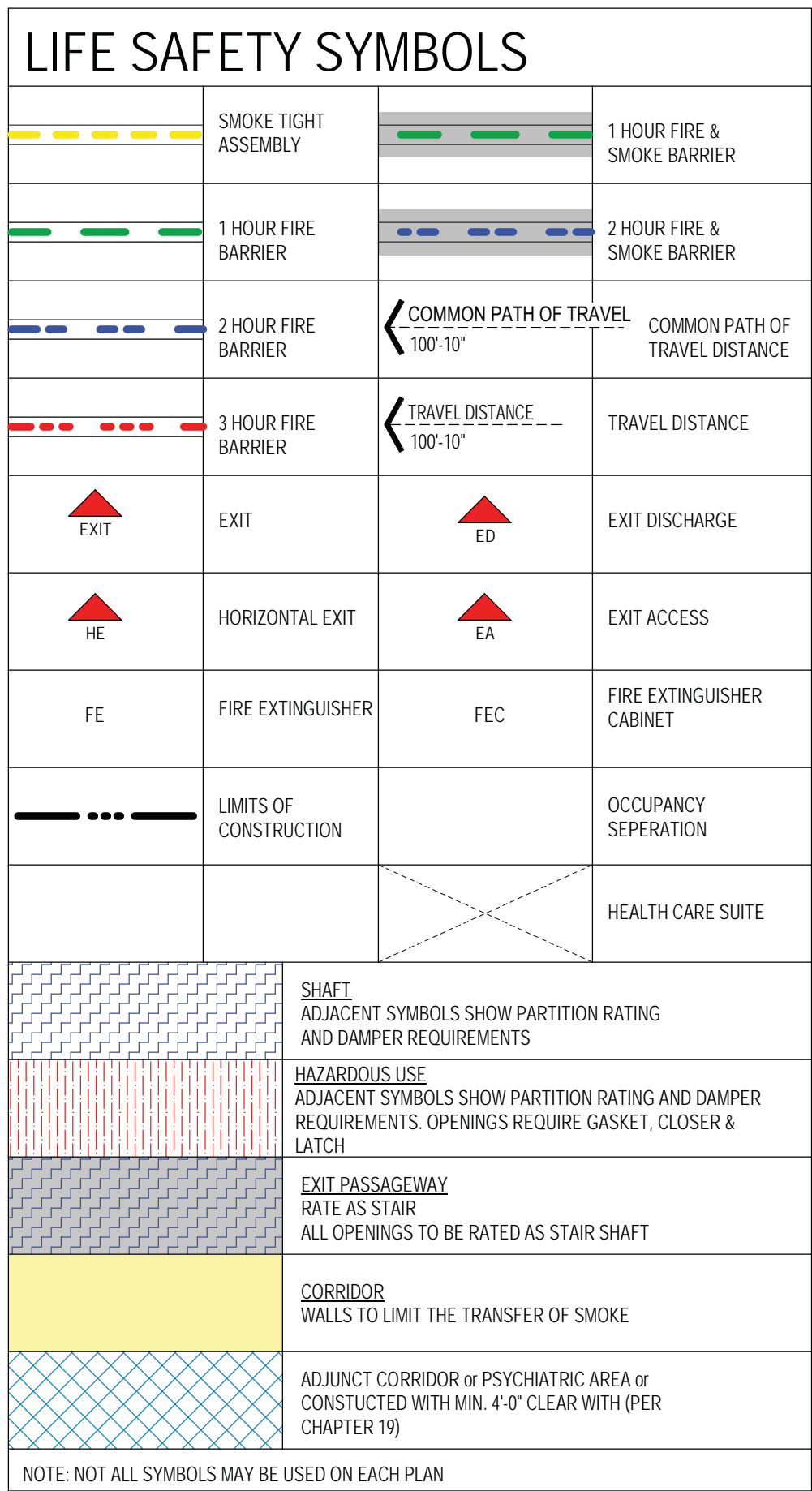
Building Number

1

Drawing Number

GI015

BID SET



A graphic scale bar is shown with markings at 0, 8', 16', and 32'. To the right of the scale bar is a north arrow pointing upwards, consisting of a circle with a vertical line through the center and a small arrowhead at the top.

<p>CONSULTANT</p> 		<p>ARCHITECT/ENGINEER OF RECORD</p>  <p>13605 1st Ave. N. #100 Plymouth, MN 55441 P 763.412.4000 F 763.412.4090 ae-mn.com Anderson Engineering of Minnesota, LLC Proj# 15744</p>		 <p>Office of Construction and Facilities Management</p> <p>VA U.S. Department of Veterans Affairs</p>		<p>Drawing Title</p> <p>SEVENTH LEVEL LIFE SAFETY PLAN</p> <p>Approved:</p>		<p>Phase</p> <p>100% CONSTRUCTION DOCUMENTS</p> <p>FULLY SPRINKLERED</p>		<p>Project Title</p> <p>NWHCS - CONSTRUCT AIR HANDLING TOWER</p> <p>Location OMAHA, NE</p> <p>Issue Date 05/28/21</p> <p>Checked LA</p> <p>Drawn CM</p>			<p>Project Number 636-18-303</p> <p>Building Number 1</p> <p>Drawing Number GI017</p>	
---	--	--	--	--	--	---	--	--	--	---	--	--	---	--

A

B

C

D

E

F

5/27/2024 12:42:11 PM

C:\Users\Public\Documents\Revit Projects\15744-R19_juchtemhagen@aem.com.rvt

A

B

C

D

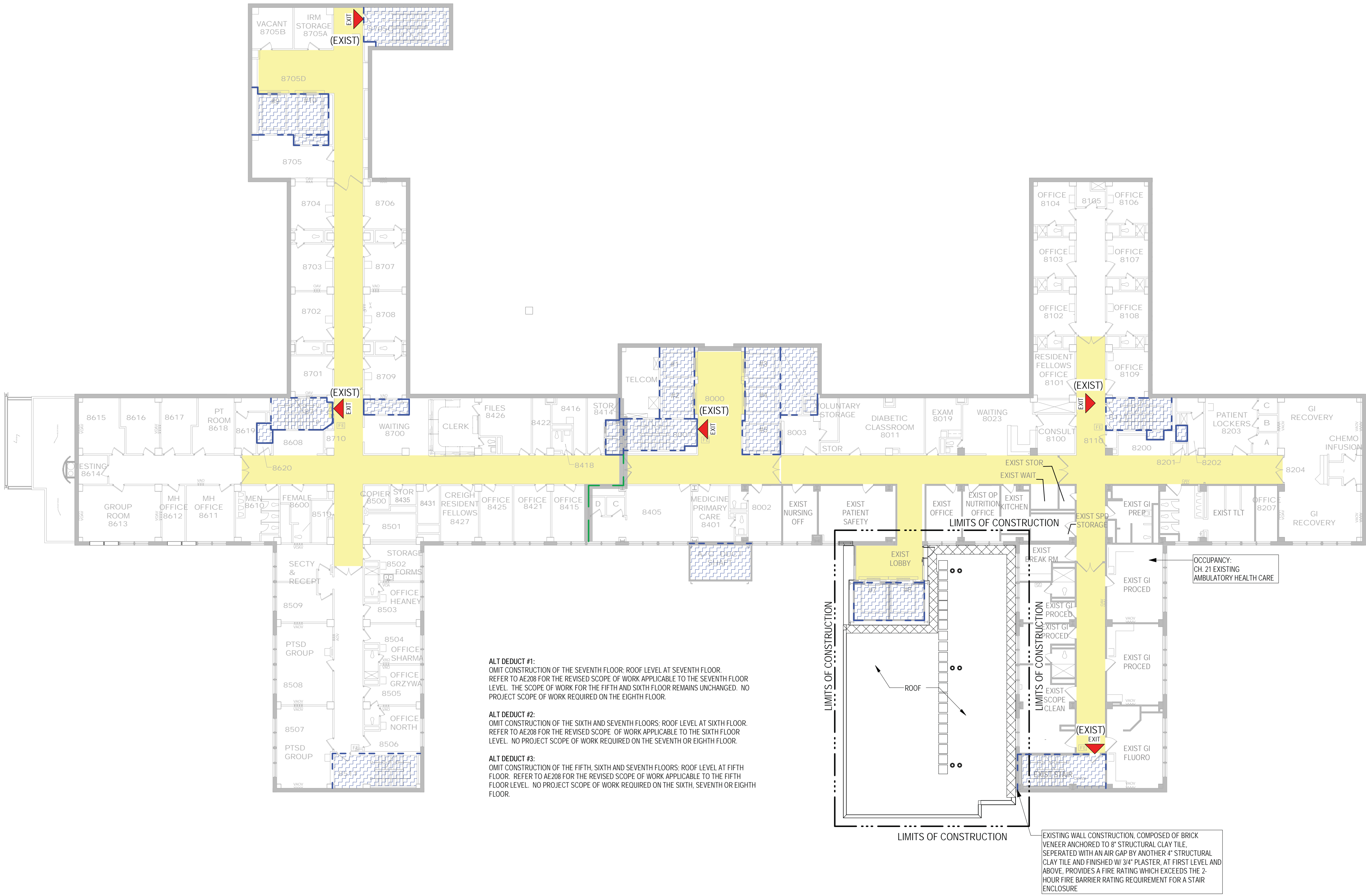
E

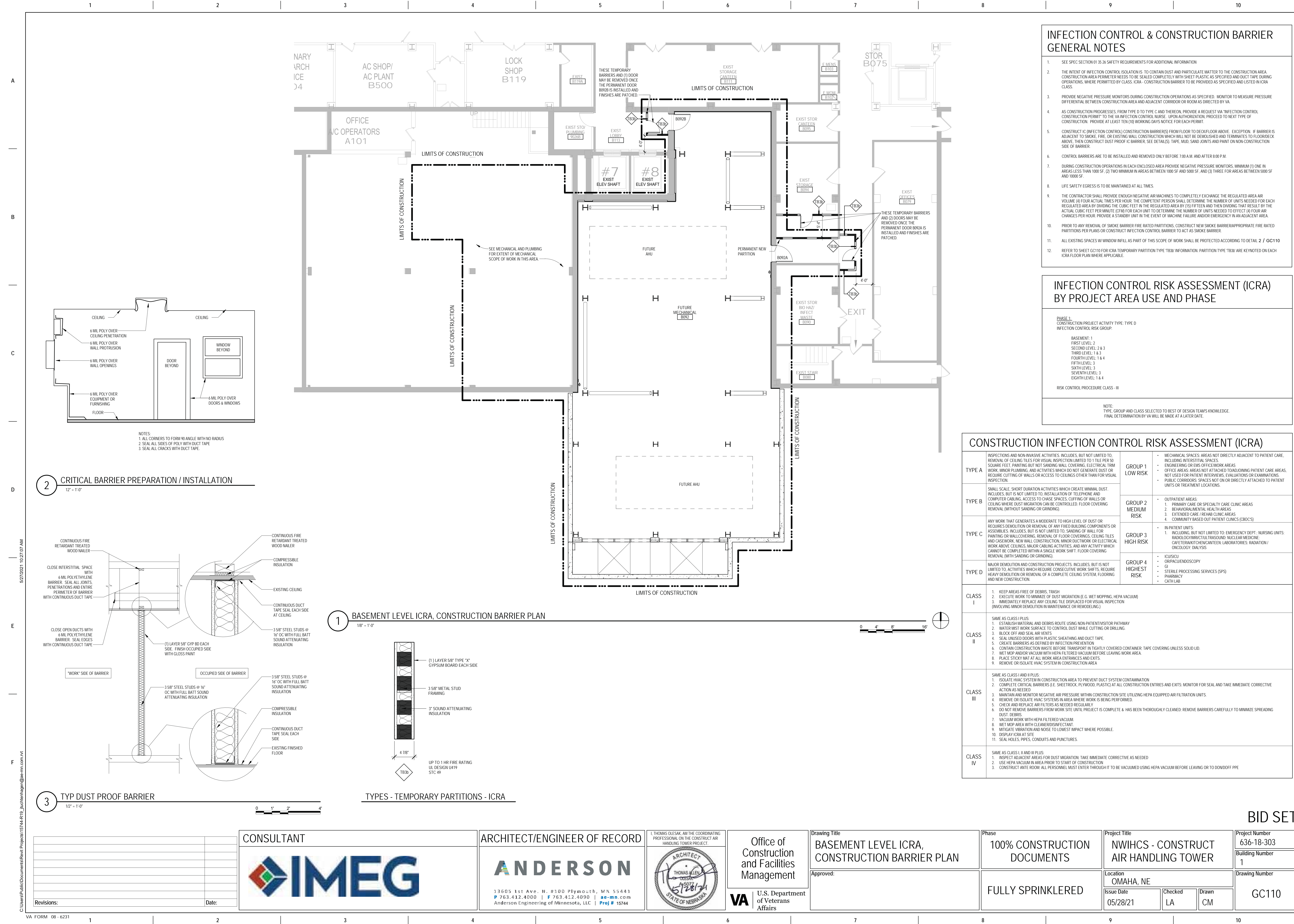
F

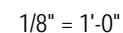
LIFE SAFETY SYMBOLS

	SMOKE TIGHT ASSEMBLY		1 HOUR FIRE & SMOKE BARRIER
	1 HOUR FIRE BARRIER		2 HOUR FIRE & SMOKE BARRIER
	2 HOUR FIRE BARRIER		COMMON PATH OF TRAVEL 100'-10'
	3 HOUR FIRE BARRIER		TRAVEL DISTANCE 100'-10'
	EXIT		EXIT DISCHARGE
	HORIZONTAL EXIT		EXIT ACCESS
	FIRE EXTINGUISHER		FIRE EXTINGUISHER CABINET
	LIMITS OF CONSTRUCTION		OCCUPANCY SEPARATION
			HEALTH CARE SUITE
	SHAFT		ADJACENT SYMBOLS SHOW PARTITION RATING AND DAMPER REQUIREMENTS
	HAZARDOUS USE		ADJACENT SYMBOLS SHOW PARTITION RATING AND DAMPER REQUIREMENTS. OPENINGS REQUIRE GASKET, CLOSER & LATCH
	EXIT PASSAGEWAY		RATE AS STAIR. ALL OPENINGS TO BE RATED AS STAIR SHAFT
	CORRIDOR		WALLS TO LIMIT THE TRANSFER OF SMOKE
	ADJUNCT CORRIDOR or PSYCHIATRIC AREA or CONSTRUCTED WITH MIN. 4'-0" CLEAR WITH (PER CHAPTER 19)		

NOTE: NOT ALL SYMBOLS MAY BE USED ON EACH PLAN







Drawing Number

GC111

A

B

C

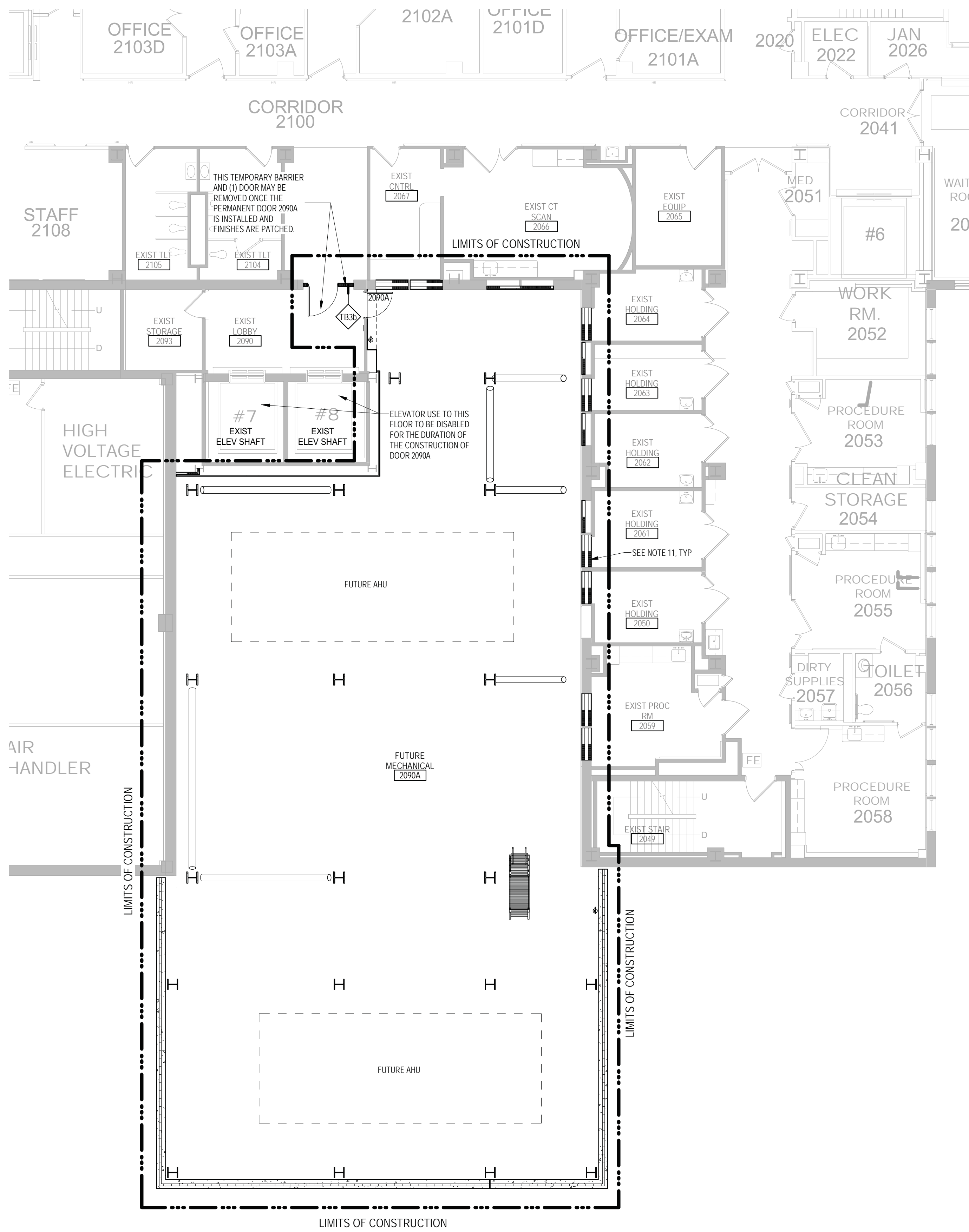
D

E

F

5/27/2021 10:27:12 AM

C:\Users\Public\Documents\Revit Projects\1744-R19_juchentmagn@ae-m.com.rvt



1 SECOND LEVEL ICRA & CONSTRUCTION BARRIER PLAN
1/8" = 1'-0"

INFECTION CONTROL & CONSTRUCTION BARRIER GENERAL NOTES

- SEE SPEC SECTION 01 35 26 SAFETY REQUIREMENTS FOR ADDITIONAL INFORMATION
- THE INTENT OF INFECTION CONTROL ISOLATION IS TO CONTAIN DUST AND PARTICULATE MATTER TO THE CONSTRUCTION AREA. CONSTRUCTION AREA PERIMETER NEEDS TO BE SEALED COMPLETELY WITH SHEET PLASTIC AS SPECIFIED AND DUCT TAPE DURING OPERATIONS, WHERE PERMITTED BY CLASS. ICRA - CONSTRUCTION BARRIER TO BE PROVIDED AS SPECIFIED AND LISTED IN ICRA CLASS.
- PROVIDE NEGATIVE PRESSURE MONITORS DURING CONSTRUCTION OPERATIONS AS SPECIFIED. MONITOR TO MEASURE PRESSURE DIFFERENTIAL BETWEEN CONSTRUCTION AREA AND ADJACENT CORRIDOR OR ROOM AS DIRECTED BY VA.
- AS CONSTRUCTION PROGRESSES, FROM TYPE D TO TYPE C AND THEREON, PROVIDE A REQUEST VIA "INFECTION CONTROL CONSTRUCTION PERMIT" TO THE VA INFECTION CONTROL NURSE. UPON AUTHORIZATION, PROCEED TO NEXT TYPE OF CONSTRUCTION. PROVIDE AT LEAST TEN (10) WORKING DAYS NOTICE FOR EACH PERMIT.
- CONSTRUCT IC (INFECTION CONTROL) CONSTRUCTION BARRIERS FROM FLOOR TO DECK/FLOOR ABOVE. EXCEPTION: IF BARRIER IS ADJACENT TO SMOKE, FIRE, OR EXISTING WALL CONSTRUCTION WHICH WILL NOT BE DEMOLISHED AND TERMINATES TO FLOOR/DECK ABOVE, THEN CONSTRUCT DUST PROOF IC BARRIER. SEE DETAILS). TAPE, MILD, SAND JOINTS AND PAINT ON NON-CONSTRUCTION SIDE OF BARRIER.
- CONTROL BARRIERS ARE TO BE INSTALLED AND REMOVED ONLY BEFORE 7:00 A.M. AND AFTER 8:00 P.M.
- DURING CONSTRUCTION OPERATIONS IN EACH ENCLOSED AREA PROVIDE NEGATIVE PRESSURE MONITORS, MINIMUM (1) ONE IN AREAS LESS THAN 1000 SF, (2) TWO MINIMUM IN AREAS BETWEEN 1000 SF AND 5000 SF, AND (3) THREE FOR AREAS BETWEEN 5000 SF AND 10000 SF.
- LIFE SAFETY EGRESS IS TO BE MAINTAINED AT ALL TIMES.
- THE CONTRACTOR SHALL PROVIDE ENOUGH NEGATIVE AIR MACHINES TO COMPLETELY EXCHANGE THE REGULATED AREA AIR VOLUME (4) FOUR ACTUAL TIMES PER HOUR. THE COMPETENT PERSON SHALL DETERMINE THE NUMBER OF UNITS NEEDED FOR EACH REGULATED AREA BY DIVIDING THE CUBIC FEET IN THE REGULATED AREA BY (15) FIFTEEN AND THEN DIVIDING THAT RESULT BY THE ACTUAL CUBIC FEET PER MINUTE (CFM) FOR EACH UNIT TO DETERMINE THE NUMBER OF UNITS NEEDED TO EFFECT (4) FOUR AIR CHANGES PER HOUR. PROVIDE A STANDBY UNIT IN THE EVENT OF MACHINE FAILURE AND/OR EMERGENCY IN AN ADJACENT AREA.
- PRIOR TO ANY REMOVAL OF SMOKE BARRIER FIRE RATED PARTITIONS, CONSTRUCT NEW SMOKE BARRIER APPROPRIATE FIRE RATED PARTITIONS PER PLANS OR CONSTRUCT INFECTION CONTROL BARRIER TO ACT AS SMOKE BARRIER.
- ALL EXISTING SPACES W/ WINDOW INFILL AS PART OF THIS SCOPE OF WORK SHALL BE PROTECTED ACCORDING TO DETAIL 2 / GC110
- REFER TO SHEET GC110 FOR ICRA TEMPORARY PARTITION TYPE 'TBS' INFORMATION. PARTITION TYPE 'TBS' ARE KEYNOTED ON EACH ICRA FLOOR PLAN WHERE APPLICABLE.

INFECTION CONTROL RISK ASSESSMENT (ICRA) BY PROJECT AREA USE AND PHASE

PHASE 1: CONSTRUCTION PROJECT ACTIVITY TYPE: TYPE D INFECTION CONTROL RISK GROUP:	
BASEMENT: 1 FIRST LEVEL: 2 SECOND LEVEL: 2 & 3 THIRD LEVEL: 1 & 2 FOURTH LEVEL: 1 & 4 FIFTH LEVEL: 3 SIXTH LEVEL: 3 SEVENTH LEVEL: 3 EIGHTH LEVEL: 1 & 4	
RISK CONTROL PROCEDURE CLASS - III	
NOTE: TYPE, GROUP AND CLASS SELECTED TO BEST OF DESIGN TEAM'S KNOWLEDGE. FINAL DETERMINATION BY VA WILL BE MADE AT A LATER DATE.	

CONSTRUCTION INFECTION CONTROL RISK ASSESSMENT (ICRA)

TYPE A	INSPECTIONS AND NON-INVASIVE ACTIVITIES INCLUDES, BUT NOT LIMITED TO, REMOVAL OF CEILING TILES FOR VISUAL INSPECTION LIMITED TO 1 TILE PER 50 SQUARE FEET. PAINTING BUT NOT SANDING WALL COVERING, ELECTRICAL TRIM WORK, MINOR PLUMBING, AND ACTIVITY WHICH DOES NOT GENERATE DUST OR REQUIRE CUTTING OF WALLS OR ACCESS TO CEILINGS OTHER THAN FOR VISUAL INSPECTION.	GROUP 1 LOW RISK	<ul style="list-style-type: none">MECHANICAL SPACES: AREAS NOT DIRECTLY ADJACENT TO PATIENT CARE, INCLUDING INTERSTITIAL SPACES.ENGINEERING OR EMS OFFICE/WORK AREASOFFICE AREAS: AREAS NOT ATTACHED TO/ADJACENT TO PATIENT CARE AREAS, NOT USED FOR PATIENT INTERVIEWS, EVALUATIONS OR EXAMINATIONS.PUBLIC CORRIDORS: SPACES NOT ON OR DIRECTLY ATTACHED TO PATIENT UNITS OR TREATMENT LOCATIONS.
TYPE B	SMALL SCALE, SHORT DURATION ACTIVITIES WHICH CREATE MINIMAL DUST INCLUDES, BUT IS NOT LIMITED TO, INSTALLATION OF TELEPHONE AND COMPUTER CABLES, ACCESS TO CHASE SPACES, CHIPPING OF WALLS OR CEILING WHERE DUST MIGRATION CAN BE CONTROLLED, FLOOR COVERING REMOVAL (WITHOUT SANDING OR GRINDING).	GROUP 2 MEDIUM RISK	<ul style="list-style-type: none">OUTPATIENT AREAS:<ul style="list-style-type: none">1. PRIMARY CARE OR SPECIALTY CARE CLINIC AREAS2. BEHAVIORAL/MENTAL HEALTH AREAS3. EXTENDED CARE / REHAB CLINIC AREAS4. COMMUNITY BASED OUTPATIENT CLINICS (CBCCS)
TYPE C	ANY WORK THAT GENERATES A MODERATE TO HIGH LEVEL OF DUST OR REQUIRES DEMOLITION OR REMOVAL OF ANY FIXED BUILDING COMPONENTS OR ASSEMBLIES INCLUDES, BUT IS NOT LIMITED TO, SANDING OF WALL FOR PAINTING OR WALL COVERING, REMOVAL OF FLOOR COVERINGS, CEILING TILES AND CASEWORK, NEW WALL CONSTRUCTION, MINOR DUCTWORK OR ELECTRICAL WORK ABOVE CEILINGS, MAJOR CABLE ACTIVITY, AND ANY ACTIVITY WHICH CANNOT BE COMPLETED WITHIN A SINGLE WORK SHIFT. FLOOR COVERING REMOVAL (WITH SANDING OR GRINDING).	GROUP 3 HIGH RISK	<ul style="list-style-type: none">IN-PATIENT UNITS:<ul style="list-style-type: none">1. INCLUDING, BUT NOT LIMITED TO: EMERGENCY DEPT. / NURSING UNITS: RADIOLOGY/IMR/CUTL/TRASOUND/NUCLEAR MEDICINE, CHEMOTHERAPY/CHEM/CAWTEEN, LABORATORIES, RADIATION / ONCOLOGY / DIALYSIS
TYPE D	MAJOR DEMOLITION AND CONSTRUCTION PROJECTS, INCLUDES, BUT IS NOT LIMITED TO, ACTIVITIES WHICH REQUIRE CONSECUTIVE WORK SHIFTS, REQUIRE HEAVY DEMOLITION OR REMOVAL OF A COMPLETE CEILING SYSTEM, FLOORING AND NEW CONSTRUCTION.	GROUP 4 HIGHEST RISK	<ul style="list-style-type: none">ICUS/ICUORIPACU/ENDOSCOPYGISTERILE PROCESSING SERVICES (SPS)PHARMACYCATH LAB
CLASS I	<ol style="list-style-type: none">KEEP AREAS FREE OF DEBRIS, TRASHEXECUTE WORK TO MINIMIZE OF DUST MIGRATION (E.G. WET MOPPING, HEPA VACUUM)IMMEDIATELY REPLACE ANY CEILING TILE DISPLACED FOR VISUAL INSPECTION (INVOLVING MINOR DEMOLITION IN MAINTENANCE OR REMODELING)		
CLASS II	SAME AS CLASS I PLUS: <ol style="list-style-type: none">ESTABLISH MATERIAL AND DEBRIS ROUTE USING NON-PATIENT/VISITOR PATHWAYWATER MIST WORK SURFACE TO CONTROL DUST WHILE CUTTING OR DRILLINGFLOOR OFF AND SEAL AIR VENTSSEAL UNUSED DOORS WITH PLASTIC SHEATHING AND DUCT TAPECREATE BARRIERS AS DEFINED BY INFECTION PREVENTIONCONTAIN CONSTRUCTION WASTE BEFORE TRANSPORT IN TIGHTLY COVERED CONTAINER TAPE COVERING UNLESS SOLID LIDWET MOP AND/OR VACUUM WITH HEPA FILTERED VACUUM BEFORE LEAVING WORK AREAPLACE STICKY MAT AT ALL WORK AREA ENTRANCES AND EXITSREMOVE OR ISOLATE HVAC SYSTEM IN CONSTRUCTION AREA		
CLASS III	SAME AS CLASS I AND II PLUS: <ol style="list-style-type: none">ISOLATE HVAC SYSTEM IN CONSTRUCTION AREA TO PREVENT DUCT SYSTEM CONTAMINATIONCOMPLETE CRITICAL BARRIERS (I.E. SHEETROCK, PLYWOOD, PLASTIC) AT ALL CONSTRUCTION ENTRIES AND EXITS. MONITOR FOR SEAL AND TAKE IMMEDIATE CORRECTIVE ACTION AS NEEDEDMAINTAIN AND MONITOR NEGATIVE AIR PRESSURE WITHIN CONSTRUCTION SITE UTILIZING HEPA EQUIPPED AIR FILTRATION UNITSREMOVE OR ISOLATE HVAC SYSTEMS IN AREA WHERE WORK IS BEING PERFORMEDCHECK AND REPLACE AIR FILTERS AS NEEDED REGULARLYDO NOT REMOVE BARRIERS FROM WORK SITE UNTIL PROJECT IS COMPLETE & HAS BEEN THOROUGHLY CLEANED; REMOVE BARRIERS CAREFULLY TO MINIMIZE SPREADING DUST/DEBRISVACUUM WORK WITH HEPA FILTERED VACUUMWET MOP AREA WITH CLEANER/DISINFECTANTMITIGATE VIBRATION AND NOISE TO LOWEST IMPACT WHERE POSSIBLEDISPLAY ICRA AT SITESEAL HOLES, PIPES, CONDUITS AND PUNCTURES		
CLASS IV	SAME AS CLASS I, II AND III PLUS: <ol style="list-style-type: none">INSPECT ADJACENT AREAS FOR DUST MIGRATION; TAKE IMMEDIATE CORRECTIVE AS NEEDEDUSE HEPA VACUUM IN AREA PRIOR TO START OF CONSTRUCTIONCONSTRUCT ANTE ROOM: ALL PERSONNEL MUST ENTER THROUGH IT TO BE VACUUMED USING HEPA VACUUM BEFORE LEAVING OR TO DON/DOFF PPE		

BID SET

Revisions:	Date:

CONSULTANT



ARCHITECT/ENGINEER OF RECORD



13605 1st Ave. N. #100 Plymouth, MN 55441
P 763.412.4000 | F 763.412.4090 | ae-mn.com
Anderson Engineering of Minnesota, LLC | Proj # 15744

I, THOMAS OLESAK, AM THE COORDINATING PROFESSIONAL ON THE CONSTRUCT AIR HANDLING TOWER PROJECT.



Office of
Construction
and Facilities
Management



U.S. Department
of Veterans
Affairs

Drawing Title

SECOND LEVEL ICRA,
CONSTRUCTION BARRIER PLAN

Approved:

Phase

100% CONSTRUCTION
DOCUMENTS

FULLY SPRINKLERED

Project Title

NWIHCS - CONSTRUCT
AIR HANDLING TOWER

Location
OMAHA, NE

Issue Date

05/28/21

Checked

LA

Drawn

CM

Project Number

636-18-303

Building Number

1

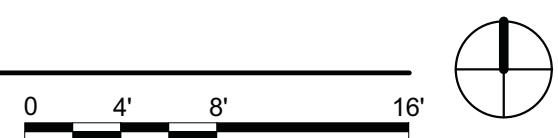
Drawing Number

GC112

VA FORM 08-6231

1/8" - 1'-0"

Project Number	636-18-303
Building Number	1
Drawing Number	GC113



2 FIFTH LEVEL ICRA, CONSTRUCTION BARRIER PLAN
1/8" = 1'-0"



GC114

A

B

C

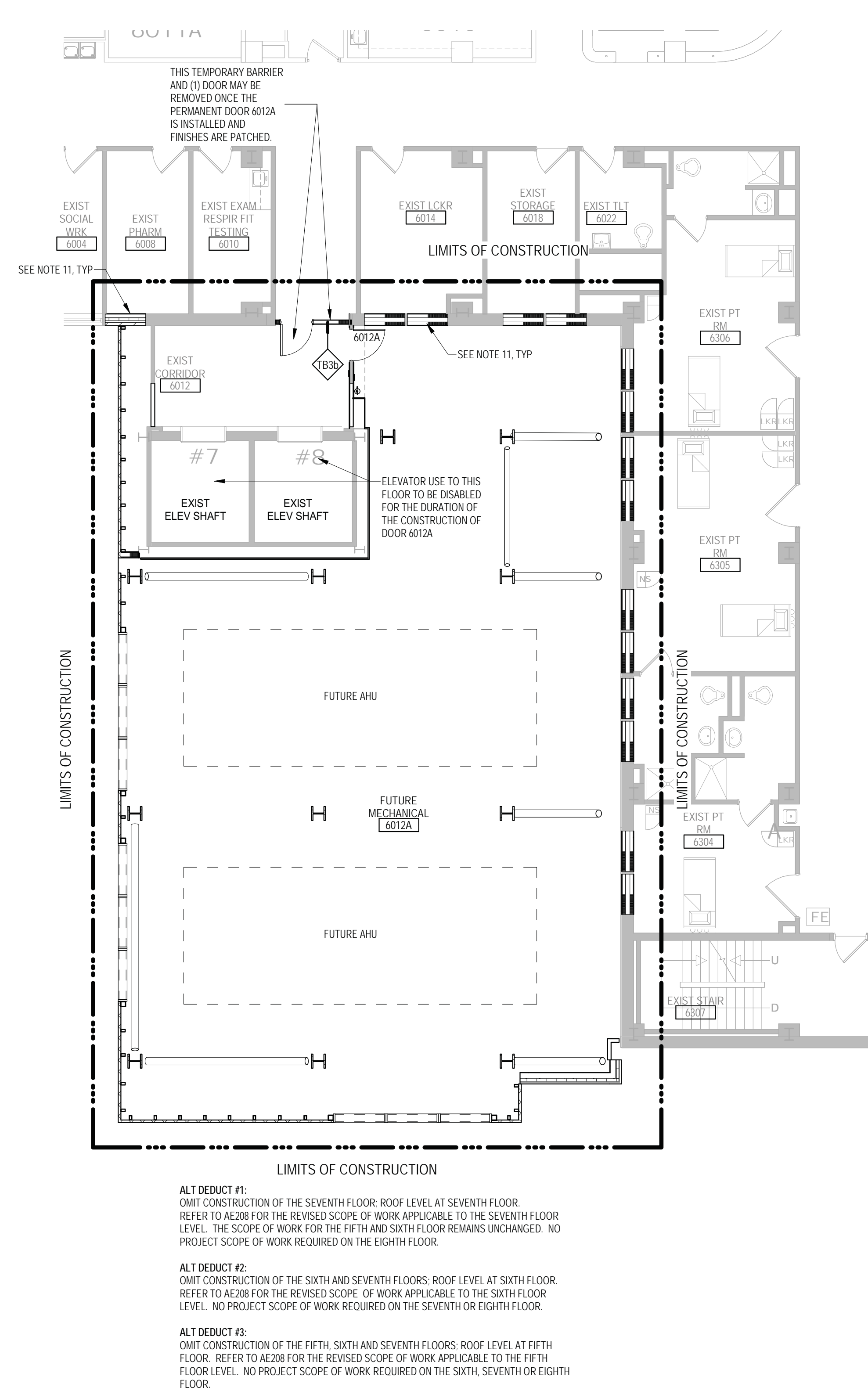
D

E

F

5/27/2021 10:27:22 AM

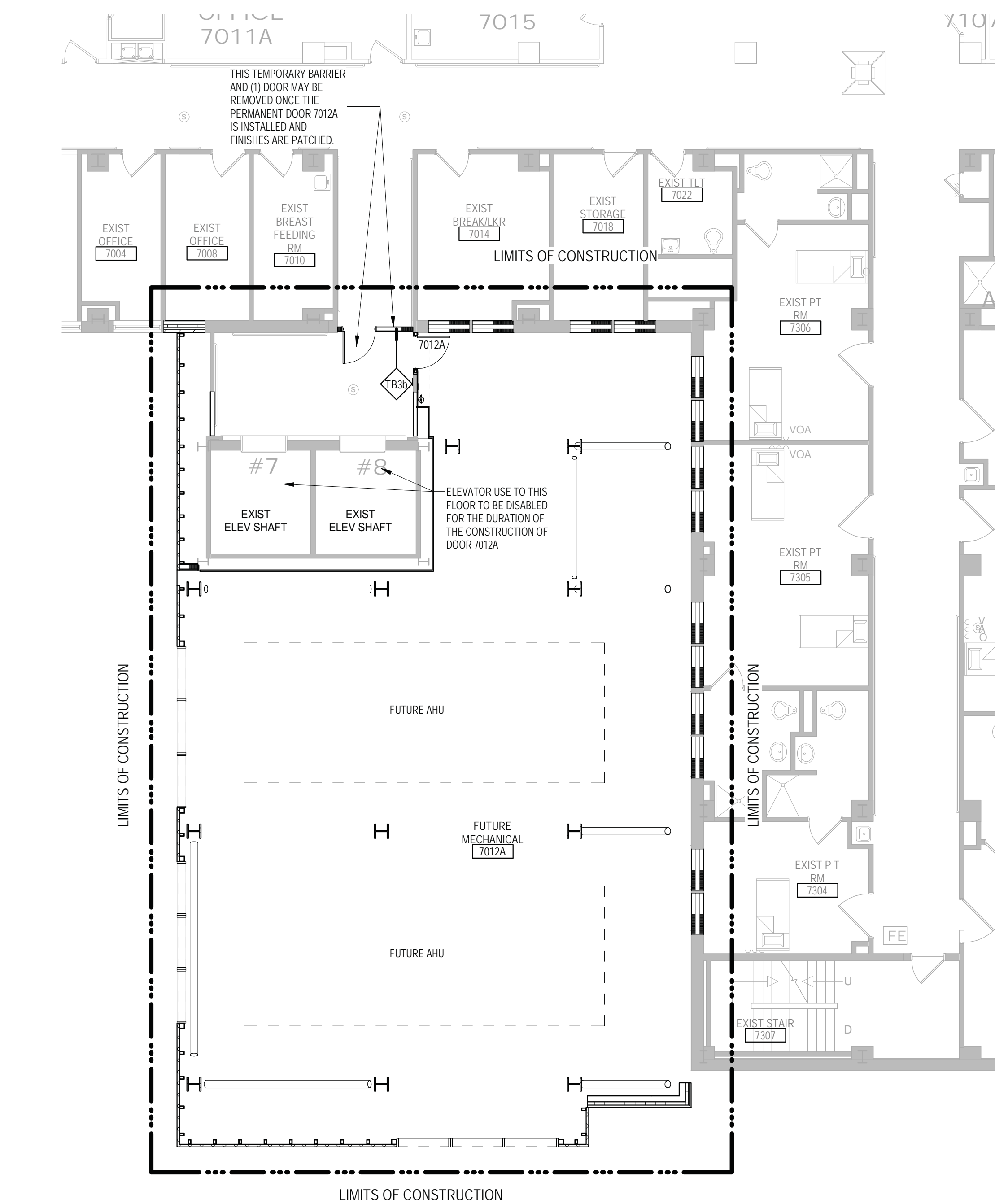
C:\Users\Public\Documents\Revit Projects\1744-R19_Juchemhagen@ae-m.com.rvt



1 SIXTH LEVEL ICRA, CONSTRUCTION BARRIER PLAN

1/8" = 1'-0"

0 4' 8' 16'



2 SEVENTH LEVEL ICRA, CONSTRUCTION BARRIER PLAN

1/8" = 1'-0"

0 4' 8' 16'



INFECTION CONTROL & CONSTRUCTION BARRIER GENERAL NOTES

- SEE SPEC SECTION 01 35 26 SAFETY REQUIREMENTS FOR ADDITIONAL INFORMATION.
- THE INTENT OF INFECTION CONTROL ISOLATION IS TO CONTAIN DUST AND PARTICULATE MATTER TO THE CONSTRUCTION AREA. CONSTRUCTION AREA PERIMETER NEEDS TO BE SEALED COMPLETELY WITH SHEET PLASTIC AS SPECIFIED AND DUCT TAPE DURING OPERATIONS, WHERE PERMITTED BY CLASS. ICRA - CONSTRUCTION BARRIER TO BE PROVIDED AS SPECIFIED AND LISTED IN ICRA CLASS.
- PROVIDE NEGATIVE PRESSURE MONITORS DURING CONSTRUCTION OPERATIONS AS SPECIFIED. MONITOR TO MEASURE PRESSURE DIFFERENTIAL BETWEEN CONSTRUCTION AREA AND ADJACENT CORRIDOR OR ROOM AS DIRECTED BY VA.
- AS CONSTRUCTION PROGRESSES, FROM TYPE D TO TYPE C AND THEREON, PROVIDE A REQUEST VIA INFECTION CONTROL CONSTRUCTION PERMIT TO THE VA INFECTION CONTROL NURSE. UPON AUTHORIZATION, PROCEED TO NEXT TYPE OF CONSTRUCTION. PROVIDE AT LEAST TEN (10) WORKING DAYS NOTICE FOR EACH PERMIT.
- CONSTRUCT IC (INFECTION CONTROL) CONSTRUCTION BARRIER(S) FROM FLOOR TO DECK/FLOOR ABOVE. EXCEPTION: IF BARRIER IS ADJACENT TO SMOKE, FIRE, OR EXISTING WALL CONSTRUCTION WHICH WILL NOT BE DEMOLISHED AND TERMINATES TO FLOOR/DECK ABOVE, THEN CONSTRUCT DUST PROOF IC BARRIER. SEE DETAILS. TAPE, MUD, SAND JOINTS AND PAINT ON NON-CONSTRUCTION SIDE OF BARRIER.
- CONTROL BARRIERS ARE TO BE INSTALLED AND REMOVED ONLY BEFORE 7:00 A.M. AND AFTER 6:00 P.M.
- DURING CONSTRUCTION OPERATIONS IN EACH ENCLOSED AREA PROVIDE NEGATIVE PRESSURE MONITORS, MINIMUM (1) ONE IN AREAS LESS THAN 1000 SF, (2) TWO MINIMUM IN AREAS BETWEEN 1000 SF AND 5000 SF, AND (3) THREE FOR AREAS BETWEEN 5000 SF AND 10000 SF.
- LIFE SAFETY EGRESS IS TO BE MAINTAINED AT ALL TIMES.
- THE CONTRACTOR SHALL PROVIDE ENOUGH NEGATIVE AIR MACHINES TO COMPLETELY EXCHANGE THE REGULATED AREA AIR VOLUME (4) FOUR ACTUAL TIMES PER HOUR. THE COMPETENT PERSON SHALL DETERMINE THE NUMBER OF UNITS NEEDED FOR EACH REGULATED AREA BY DIVIDING THE CUBIC FEET IN THE REGULATED AREA BY (15) FIFTEEN AND THEN DIVIDING THAT RESULT BY THE ACTUAL CUBIC FEET PER MINUTE (CFM) FOR EACH UNIT TO DETERMINE THE NUMBER OF UNITS NEEDED TO EFFECT (4) FOUR AIR CHANGES PER HOUR. PROVIDE A STANDBY UNIT IN THE EVENT OF MACHINE FAILURE AND/OR EMERGENCY IN AN ADJACENT AREA.
- PRIOR TO ANY REMOVAL OF SMOKE BARRIER FIRE RATED PARTITIONS, CONSTRUCT NEW SMOKE BARRIER APPROPRIATE FIRE RATED PARTITIONS PER PLANS OR CONSTRUCT INFECTION CONTROL BARRIER TO ACT AS SMOKE BARRIER.
- ALL EXISTING SPACES WITH WINDOW INFILL AS PART OF THIS SCOPE OF WORK SHALL BE PROTECTED ACCORDING TO DETAIL 2 / GC110.
- REFER TO SHEET GC110 FOR ICRA TEMPORARY PARTITION TYPE 'TBS' INFORMATION. PARTITION TYPE 'TBS' ARE KEYNOTED ON EACH ICRA FLOOR PLAN WHERE APPLICABLE.

INFECTION CONTROL RISK ASSESSMENT (ICRA) BY PROJECT AREA USE AND PHASE

PHASE 1: CONSTRUCTION PROJECT ACTIVITY TYPE: TYPE D INFECTION CONTROL RISK GROUP:
BASEMENT: 1 FIRST LEVEL: 2 SECOND LEVEL: 2 & 3 THIRD LEVEL: 1 & 3 FOURTH LEVEL: 1 & 4 FIFTH LEVEL: 3 SIXTH LEVEL: 3 SEVENTH LEVEL: 3 EIGHTH LEVEL: 1 & 4
RISK CONTROL PROCEDURE CLASS - III
NOTE: TYPE, GROUP AND CLASS SELECTED TO BEST OF DESIGN TEAM'S KNOWLEDGE. FINAL DETERMINATION BY VA WILL BE MADE AT A LATER DATE.

CONSTRUCTION INFECTION CONTROL RISK ASSESSMENT (ICRA)

TYPE A	INSPECTIONS AND NON-INVASIVE ACTIVITIES, INCLUDES, BUT NOT LIMITED TO, REMOVAL OF CEILING TILES FOR VISUAL INSPECTION LIMITED TO 1 TILE PER 50 SQUARE FEET, PAINTING BUT NOT SANDING WALL COVERING, ELECTRICAL TOWN WORK, MINOR PLUMBING, AND ACTIVITIES WHICH DO NOT GENERATE DUST OR REQUIRE CUTTING OF WALLS OR ACCESS TO CEILINGS OTHER THAN FOR VISUAL INSPECTION.	GROUP 1 LOW RISK	<ul style="list-style-type: none">MECHANICAL SPACES: AREAS NOT DIRECTLY ADJACENT TO PATIENT CARE, INCLUDING INTERSTITIAL SPACES.ENGINEERING OR BUS OFFICE WORK AREASOFFICE AREAS: AREAS NOT ATTACHED TO ADJOINING PATIENT CARE AREAS, NOT USED FOR PATIENT INTERVIEWS, EVALUATIONS OR EXAMINATIONS.PUBLIC CORRIDORS: SPACES NOT ON OR DIRECTLY ATTACHED TO PATIENT UNITS OR TREATMENT LOCATIONS.
TYPE B	SMALL SCALE, SHORT DURATION ACTIVITIES WHICH CREATE MINIMAL DUST, INCLUDES, BUT IS NOT LIMITED TO, INSTALLATION OF TELEPHONE AND COMPUTER CABLES, ACCESS TO CHASE SPACES, CURFING OF WALLS OR CEILING WHERE DUST MIGRATION CAN BE CONTROLLED, FLOOR COVERING REMOVAL (WITHOUT SANDING OR GRINDING).	GROUP 2 MEDIUM RISK	<ul style="list-style-type: none">OUTPATIENT AREAS:1. PRIMARY CARE OR SPECIALTY CARE CLINIC AREAS2. BEHAVIORAL/MENTAL HEALTH AREAS3. EXTENDED CARE / REHAB CLINIC AREAS4. COMMUNITY BASED OUTPATIENT CLINICS (CBOS)
TYPE C	ANY WORK THAT GENERATES A MODERATE TO HIGH LEVEL OF DUST OR REQUIRES DEMOLITION OR REMOVAL OF ANY FIXED BUILDING COMPONENTS OR ASSEMBLIES, INCLUDES, BUT IS NOT LIMITED TO, SANDING OF WALL FOR PAINTING OR WALLCOVERING, REMOVAL OF FLOOR COVERINGS, CEILING TILES AND CASEWORK, NEW WALL CONSTRUCTION, MINOR DUCTWORK OR ELECTRICAL WORK ABOVE CEILINGS, MAJOR CABLEING ACTIVITIES, AND ANY ACTIVITY WHICH CANNOT BE COMPLETED WITHIN A SINGLE WORK SHIFT, FLOOR COVERING REMOVAL (WITH SANDING OR GRINDING).	GROUP 3 HIGH RISK	<ul style="list-style-type: none">IN-PATIENT UNITS:1. INCLUDING, BUT NOT LIMITED TO: EMERGENCY DEPT., NURSING UNITS: RADIOLOGY/IMR/CT/ULTRASOUND, NUCLEAR MEDICINE, CAFETERIA/KITCHEN/CANTEEN, LABORATORIES, RADIATION / ONCOLOGY, DIALYSIS
TYPE D	MAJOR DEMOLITION AND CONSTRUCTION PROJECTS, INCLUDES, BUT IS NOT LIMITED TO, ACTIVITIES WHICH REQUIRE CONSECUTIVE WORK SHIFTS, REQUIRE HEAVY DEMOLITION OR REMOVAL OF A COMPLETE CEILING SYSTEM, FLOORING AND NEW CONSTRUCTION.	GROUP 4 HIGHEST RISK	<ul style="list-style-type: none">ICUS/ICUORIPACU/ENDOSCOPYGISTERILE PROCESSING SERVICES (SPS)PHARMACYCATH LAB
CLASS I	1. KEEP AREAS FREE OF DEBRIS, TRASH 2. EXECUTE WORK TO MINIMIZE OF DUST MIGRATION (E.G. WET MOPPING, HEPA VACUUM) 3. IMMEDIATELY REPLACE ANY CEILING TILE DISPLACED FOR VISUAL INSPECTION (INVOLVING MINOR DEMOLITION IN MAINTENANCE OR REMODELING.)		
CLASS II	SAME AS CLASS I PLUS: 1. ESTABLISH MATERIAL AND DEBRIS ROUTE USING NON-PATIENT/VISITOR PATHWAY 2. WATER MIST WORK SURFACE TO CONTROL DUST WHILE CUTTING OR DRILLING. 3. BLOCK OFF AND SEAL AIR VENTS 4. SEAL UNUSED DOORS WITH PLASTIC SHEATHING AND DUCT TAPE. 5. CREATE BARRIERS AS DEFINED BY INFECTION PREVENTION 6. CONTAIN CONSTRUCTION WASTE BEFORE TRANSPORT IN TIGHTLY COVERED CONTAINER. TAPE COVERING UNLESS SOLID LID. 7. WET MOP AND/OR VACUUM WITH HEPA FILTERED VACUUM BEFORE LEAVING WORK AREA. 8. PLACE STICKY MAT AT ALL WORK AREA ENTRANCES AND EXITS. 9. REMOVE OR ISOLATE HVAC SYSTEM IN CONSTRUCTION AREA.		
CLASS III	SAME AS CLASS I AND II PLUS: 1. ISOLATE HVAC SYSTEM IN CONSTRUCTION AREA TO PREVENT DUCT SYSTEM CONTAMINATION 2. COMPLETE CRITICAL BARRIERS (E.G. SHEETROCK, PLYWOOD, PLASTIC) AT ALL CONSTRUCTION ENTRIES AND EXITS. MONITOR FOR SEAL AND TAKE IMMEDIATE CORRECTIVE ACTION AS NEEDED 3. MAINTAIN AND MONITOR NEGATIVE AIR PRESSURE WITHIN CONSTRUCTION SITE UTILIZING HEPA EQUIPPED AIR FILTRATION UNITS. 4. REMOVE OR ISOLATE HVAC SYSTEMS IN AREA WHERE WORK IS BEING PERFORMED. 5. CHECK AND REPLACE AIR FILTERS AS NEEDED REGULARLY. 6. DO NOT REMOVE BARRIERS FROM WORK SITE UNTIL PROJECT IS COMPLETE & HAS BEEN THOROUGHLY CLEANED. REMOVE BARRIERS CAREFULLY TO MINIMIZE SPREADING DUST/DEBRIS. 7. VACUUM WORK WITH HEPA FILTERED VACUUM. 8. WET MOP AREA WITH CLEANER/DISINFECTANT. 9. MITIGATE VIBRATION AND NOISE TO LOWEST IMPACT WHERE POSSIBLE. 10. DISPLAY ICRA AT SITE. 11. SEAL HOLES, PIPES, CONDUCITS AND PUNCTURES.		
CLASS IV	SAME AS CLASS I, II AND III PLUS: 1. INSPECT ADJACENT AREAS FOR DUST MIGRATION; TAKE IMMEDIATE CORRECTIVE AS NEEDED 2. USE HEPA VACUUM IN AREA PRIOR TO START OF CONSTRUCTION 3. CONSTRUCT ANTE ROOM: ALL PERSONNEL MUST ENTER THROUGH IT TO BE VACUUMED USING HEPA VACUUM BEFORE LEAVING OR TO DON/DOFF PPE.		

BID SET

Revisions:	CONSULTANT IMEG	ARCHITECT/ENGINEER OF RECORD ANDERSON 13605 1st Ave. N. #100 Plymouth, MN 55441 P 763.412.4000 F 763.412.4090 ae-mn.com Anderson Engineering of Minnesota, LLC Proj # 15744	I, THOMAS OLESAK, AM THE COORDINATING PROFESSIONAL ON THE CONSTRUCT AIR HANDLING TOWER PROJECT. 	Office of Construction and Facilities Management VA U.S. Department of Veterans Affairs	Drawing Title SIXTH AND SEVENTH LEVEL ICRA, CONSTRUCTION BARRIER PLAN Approved:	Phase 100% CONSTRUCTION DOCUMENTS FULLY SPRINKLERED	Project Title NWIHCS - CONSTRUCT AIR HANDLING TOWER Location OMAHA, NE Issue Date 05/28/21 Checked LA Drawn CM	Project Number 636-18-303 Building Number 1 Drawing Number GC116
------------	---------------------------	--	---	---	--	---	--	--



SEE SECTION 01.36.25 SAFETY REQUIREMENTS FOR ADDITIONAL INFORMATION.

2. THE INTENT OF INFECTION CONTROL ISOLATIONS IS TO CONTAIN AND PARTICULATE MATTER TO THE CONSTRUCTION AREA. CONSTRUCTION AREA PERMITTEE NEEDS TO BE SEALED COMPLETELY WITH SHEET PILES AS SPECIFIED AND DUCT TAPE DURING OPERATIONS. WHERE PERMITTED BY CLASS, ICRA CONSTRUCTION BARRIER IS TO BE PROVIDED AS SPECIFIED AND LISTED IN ICRA CLASS.

3. PROVIDE NEGATIVE PRESSURE MONITORS DURING CONSTRUCTION OPERATIONS AS SPECIFIED. MONITOR TO MEASURE PRESSURE DIFFERENTIAL BETWEEN CONSTRUCTION AREA AND ADJACENT CORRIDOR OR ROOM AS REQUESTED BY VA.

4. AS CONSTRUCTION PROGRESSES, FROM TYPE D TO TYPE C AND THEREON, PROVIDE A REQUEST VIA "INFECTION CONTROL CONSTRUCTION PERMIT" TO THE VA INFECTION CONTROL NOTICE. UPON AUTHORIZATION, PROCEED TO NEXT TYPE OF CONSTRUCTION. PROVIDE AT LEAST TEN (10) WORKING DAYS NOTICE FOR EACH PERMIT.

5. CONSTRUCT IC (INFECTION CONTROL) CONSTRUCTION BARRIERS FROM FLOORS TO DECK/CEILING ABOVE. EXCEPTION, IF BARRIER IS TO BE USED TO SMOKE, FIRE, OR EXISTING WALL CONSTRUCTION WHICH WILL NOT BE DEMOLISHED AND TERMINATES TO FLOOR/CEILING ABOVE, THEN CONSTRUCT DUST PROOF IC BARRIER. SEE DETAILS (S). TAPE, MOULD, SAND JOINTS AND PAINT ON NON-CONSTRUCTION SIDE OF BARRIER.

6. CONTROL BARRIERS ARE TO BE INSTALLED AND REMOVED ONLY BEFORE 7:00 A.M. AND AFTER 8:00 P.M.

7. DURING CONSTRUCTION OPERATIONS IN EACH ENCLOSED AREA PROVIDE NEGATIVE PRESSURE MONITORS. MINIMUM (1) ONE IN AREAS LESS THAN 1000 SF, (2) TWO MINIMUM IN AREAS BETWEEN 1000 SF AND 5000 SF, AND (3) THREE AREAS BETWEEN 5000 SF AND 10000 SF.

8. LIFE SAFETY EGRESS IS TO BE MAINTAINED AT ALL TIMES.

9. THE CONTRACTOR SHALL PROVIDE ENOUGH NEGATIVE AIR MACHINES TO COMPLETELY EXCHANGE THE REGULATED AREA AIR VOLUME (4 FOUR ACTUAL TIMES PER HOUR). THE CONTRACTOR SHALL DETERMINE THE NUMBER OF UNITS NEEDED FOR EACH REGULATED AREA BY DIVIDING THE CFM/FTE IN THE REGULATED AREA BY (15) FIFTEEN AND THEN DIVIDING THAT RESULT BY THE ACTUAL CUBIC FEET PER MINUTE (CFM) FOR EACH UNIT TO DETERMINE THE NUMBER OF UNITS NEEDED TO EFFECT (4) FOUR AIR CHANGES PER HOUR. PROVIDE A STANDBY UNIT IN THE EVENT OF MACHINE FAILURE AND EMERGENCY IN AN ADJACENT AREA.

10. PRIOR TO ANY REMOVAL OF SMOKE BARRIER FIRE RATED PARTITIONS, CONSTRUCT NEW SMOKE BARRIER/ADAPPROPRIATE FIRE RATED PARTITIONS PER PLANS OR CONSTRUCT INFECTION CONTROL BARRIER TO ACT AS SMOKE BARRIER.

11. ALL EXISTING SPACES IN WINDOW INFILL AS PART OF THIS SCOPE OF WORK SHALL BE PROTECTED ACCORDING TO DETAIL 2 / GC.

12. REFER TO SHEET GC110 FOR ICRA TEMPORARY PARTITION TYPE "T33" INFORMATION. PARTITION TYPE "T33s" ARE KEYNOTED ON EACH ICRA FLOOR PLAN WHERE APPLICABLE.

PHASE 1:
CONSTRUCTION PROJECT ACTIVITY TYPE: TYPE D
INFECTION CONTROL RISK GROUP:

BASMENT: 1
FIRST LEVEL: 2
SECOND LEVEL: 2 & 3
THIRD LEVEL: 1 & 3
FOURTH LEVEL: 1 & 4
FIFTH LEVEL: 3
SIXTH LEVEL: 3
SEVENTH LEVEL: 3
EIGHTH LEVEL: 1 & 4

RISK CONTROL PROCEDURE CLASS - III

NOTE:
TYPE, GROUP AND CLASS SELECTED TO BEST OF DESIGN TEAM'S KNOWLEDGE.
FINAL DETERMINATION BY VA WILL BE MADE AT A LATER DATE.

BID SET