



U.S. Department of Veterans Affairs
Veterans Health Administration

PROJECT NAME:

PERFORM SITE PREP FOR SPS EQUIPMENT

SITE ADDRESS:

2101 ELM STREET NORTH; FARGO, ND 58102

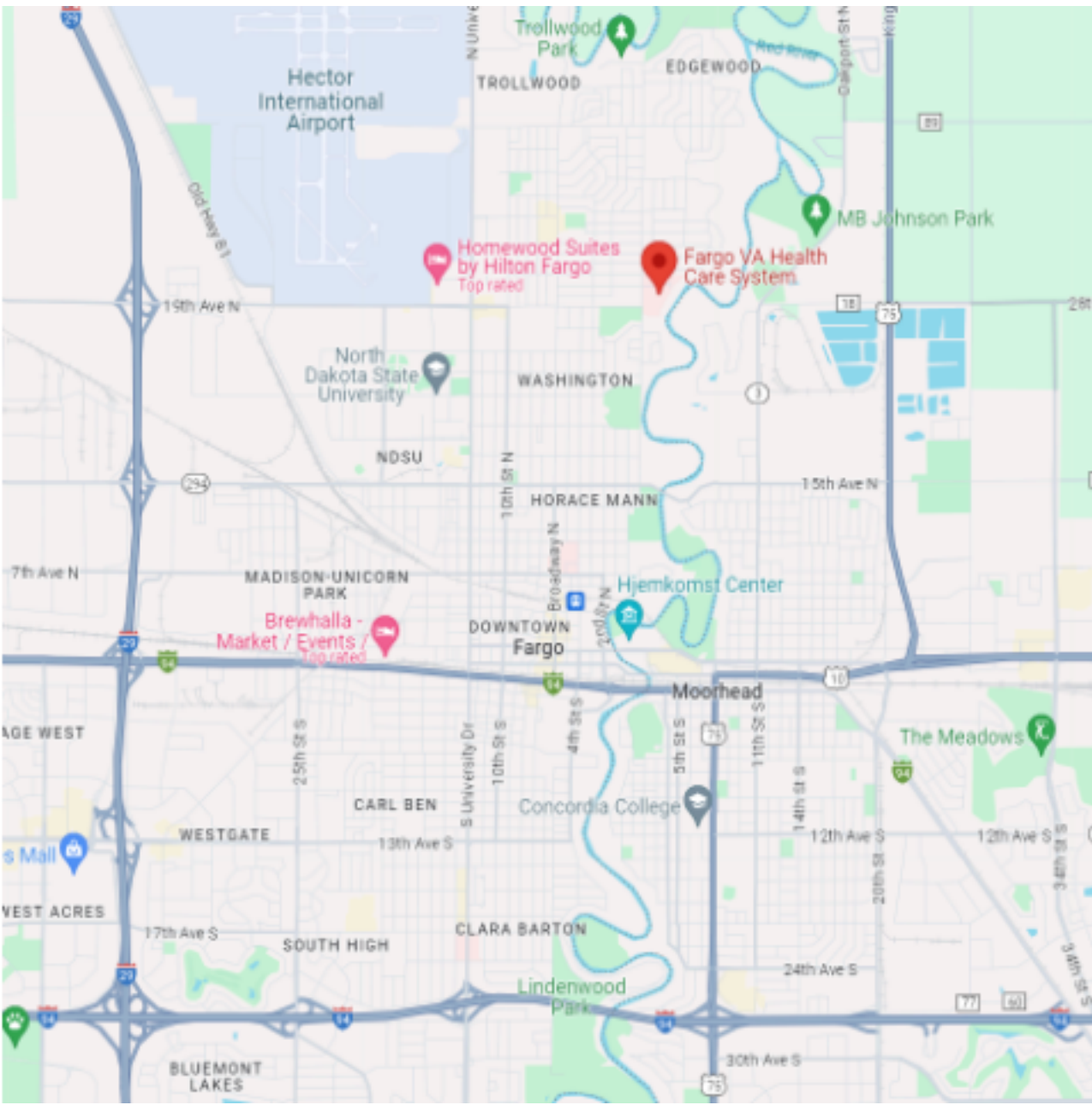
VA PROJECT NUMBER:

437-CSI-241

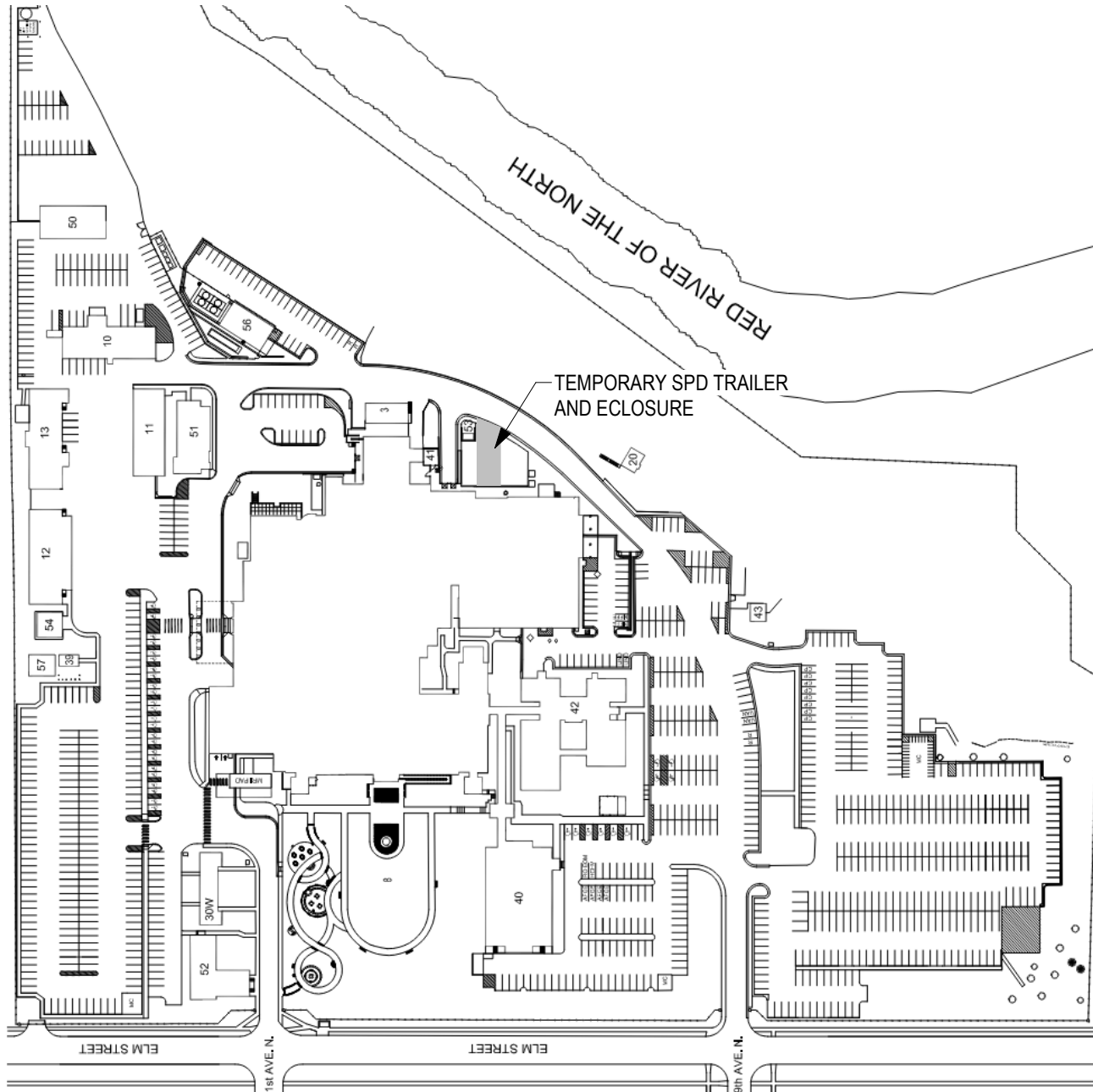
OWNER AND CONSULTANTS:

VA COR:	ARCHITECT:	ELECTRICAL ENGINEER:	FIRE PROTECTION ENGINEER
CONTACT: ROONEY VILLEGAS	NAME: ANDERSON ENGINEERING OF MN, LLC	NAME: ANDERSON ENGINEERING OF MN, LLC	NAME: IMEG
ADDRESS: 2101 ELM STREET NORTH FARGO, ND 58102	ADDRESS: 13605 1ST AVE NORTH, SUITE 100 PLYMOUTH, MN 55441	ADDRESS: 13605 1ST AVE NORTH, SUITE 100 PLYMOUTH, MN 55441	ADDRESS: 2882 106TH STREET DES MOINES, IA 50322
PHONE: 701-232-3241	CONTACT: JESSE ULLAND	CONTACT: WILLIAM HAAS	CONTACT: DELLAN LLEWELLYN
	PHONE: 763-412-4000	PHONE: 330-518-0474	PHONE: 515-334-7921
	STRUCTURAL ENGINEER:	MECHANICAL ENGINEER:	TECHNOLOGY DESIGNER
	NAME: ANDERSON ENGINEERING OF MN, LLC	NAME: ANDERSON ENGINEERING OF MN, LLC	NAME: IMEG
	ADDRESS: 13605 1ST AVE NORTH, SUITE 100 PLYMOUTH, MN 55441	ADDRESS: 13605 1ST AVE NORTH, SUITE 100 PLYMOUTH, MN 55441	ADDRESS: 855 GRANDVIEW AVENUE, SUITE 300 COLUMBUS, OH 43215
	CONTACT: ADAM ADAMS	CONTACT: KEITH HOMSTAD	CONTACT: CRAIG BUCHHOLZ
	PHONE: 701-850-8901	PHONE: 701-850-8902	PHONE: 614-443-1178 EX 223
	CIVIL ENGINEER:		
	NAME: ANDERSON ENGINEERING OF MN, LLC		
	ADDRESS: 13605 1ST AVE NORTH, SUITE 100 PLYMOUTH, MN 55441		
	CONTACT: ERIC SAUTBINE		
	PHONE: 763-412-4062		

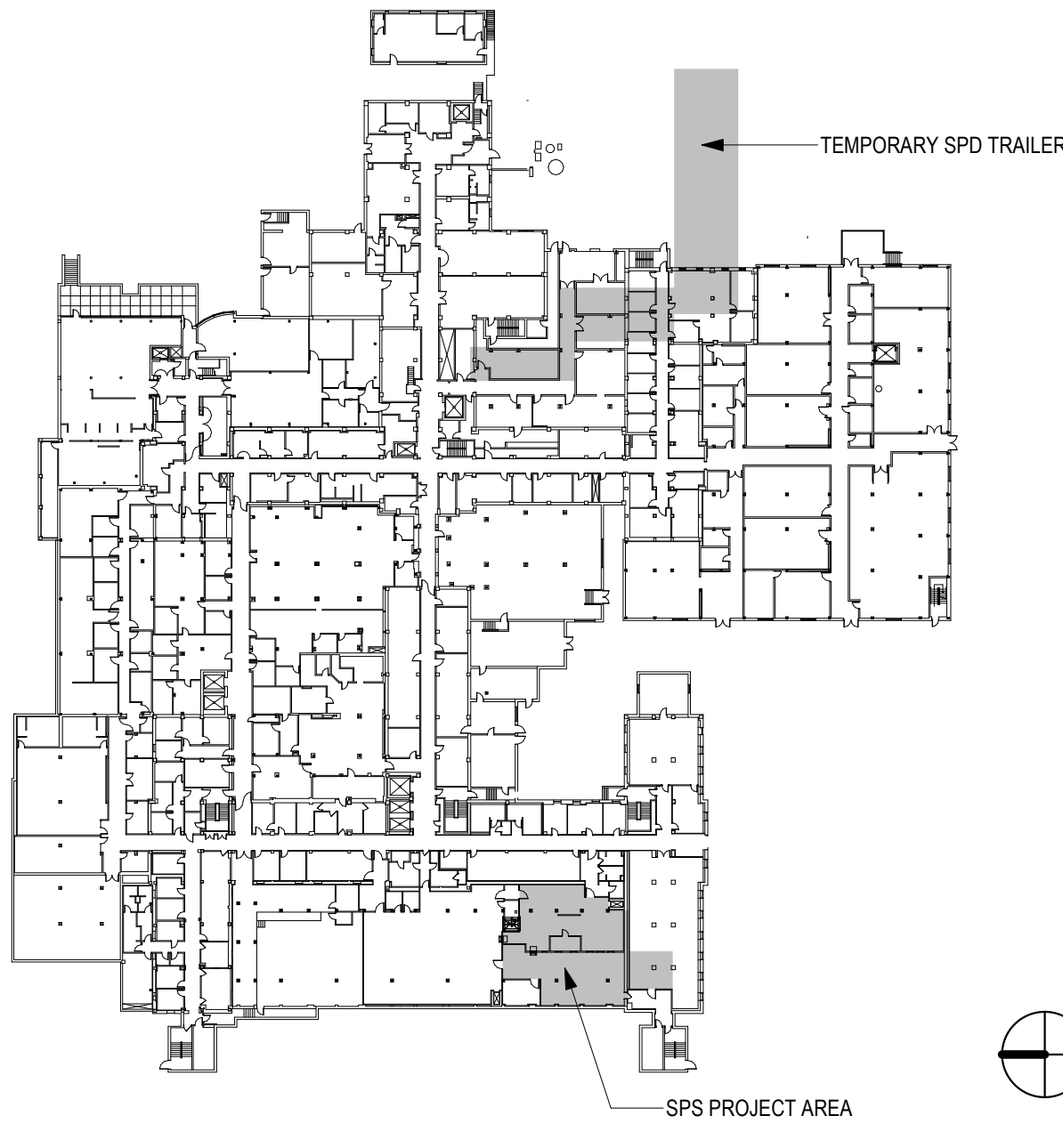
VICINITY MAP:



SITE MAP:



PROJECT AREA:



BID DOCUMENT SUBMISSION

<div>Revisions:</div> <div>Date:</div>	<div>CONSULTANT</div> <div>IMEG</div> <div>2882 106TH STREET DES MOINES IA 50322</div>	<div>DESIGNER OF RECORD</div> <div>ANDERSON</div> <div>13605 1st Ave. N. #100 Plymouth, MN 55441 P 763.412.4000 F 763.412.4090 ae-mn.com Anderson Engineering of Minnesota, LLC Proj # 17639</div>	<div>STAMP</div> <div>TOM OLESAK 2908 1/22/2025 STATE OF NORTH DAKOTA</div>	<div>Office of Construction and Facilities Management</div> <div>VA U.S. Department of Veterans Affairs</div>	Drawing Title	Phase	Project Title	Project Number
					COVER SHEET	BID DOCUMENTS	PERFORM SITE PREP FOR SPS EQUIPMENT	437-CSI-241
					Approved:	FULLY SPRINKLERED	Location FARGO, ND	Building Number 9
							Issue Date 1/22/2025	Checked JLU
							Drawn GJB	Drawing Number GI000

SHEET ABBREVIATION AND NUMBERING

DISCIPLINE DESIGNATOR SHEET TYPE DESIGNATOR FLOOR LEVEL SHEET GROUPING AREA	AS 1 1 1 - A AE 111-01 ARCHITECTURAL ELEMENTS, PLAN, FIRST LEVEL, FLOOR PLAN, ZONE 1	DISCIPLINE DESIGNATOR SHEET TYPE DESIGNATOR FLOOR LEVEL SHEET GROUPING AREA	AF 6 7 0 AF 670 ARCHITECTURAL FINISHES, FINISH SCHEDULE
DISCIPLINE DESIGNATOR SHEET TYPE DESIGNATOR FLOOR LEVEL SHEET GROUPING AREA	QH 1 1 0 - B QH110-01 EQUIPMENT HOSPITAL, PLAN, FIRST LEVEL, ZONE 1	DISCIPLINE DESIGNATOR SHEET TYPE DESIGNATOR FLOOR LEVEL SHEET GROUPING AREA	AE 5 0 1 AE 501 ARCHITECTURAL ELEMENTS, EXTERIOR PLAN DETAILS

DISCIPLINE DESIGNATOR	SHEET TYPE DESIGNATOR	FLOOR LEVEL	SHEET GROUPING
PLANS ONLY			
GC - GENERAL CONTRACT GI - GENERAL INFORMATION AC - ARCHITECTURAL RCP AD - ARCHITECTURAL DEMOLITION AS - ARCHITECTURAL AF - ARCHITECTURAL FINISHES IF - INTERIOR FURNISHINGS IN - INTERIOR DESIGN QC - EQUIPMENT LAUNDRY QF - EQUIPMENT FOOD SERVICE QH - EQUIPMENT HOSPITAL QL - EQUIPMENT LABORATORY	0 - GENERAL 1 - PLANS 2 - ELEVATIONS 3 - SECTIONS 4 - LARGE SCALE VIEWS 5 - DETAILS 6 - SCHEDULES & DIAGRAMS	0 - LOWER LEVEL 1 - FIRST LEVEL 2 - SECOND LEVEL 3 - THIRD LEVEL 4 - FOURTH LEVEL	GENERAL: 00-10 - TITLE SHEET, NOTES, ABBREVIATIONS, SYMBOLS, SCHEDULES PLANS: 1 - LEVEL FLOOR PLAN 2 - DIMENSION PLAN ELEVATIONS: 01-10 - EXTERIOR ELEVATIONS 11-19 - INTERIOR ELEVATION SECTIONS: 01-10 - BUILDING SECTIONS 11-19 - WALL SECTIONS 20-29 - STAIR SECTIONS & PLANS DETAILS: 01-19 - EXTERIOR PLAN DETAILS 20-29 - EXTERIOR SECTION DETAILS 30-39 - ROOF DETAILS 40-49 - INTERIOR PLAN DETAILS 50-59 - INTERIOR SECTION DETAILS 60-69 - CEILING DETAILS

PLAN & SECTION		SECTION	
EXISTING			EARTH
NEW CONSTRUCTION			GRAVEL / FILL
BRICK			METAL
BATT INSULATION			MORTAR NET
CMU			SOLID SURFACE
CONCRETE			
GYPSUM BOARD			
		ELEVATION	
PLYWOOD			BRICK
RIGID INSULATION			CMU
SPRAY FOAM			CONCRETE
STONE			STONE
FIRE PROOFING			WOOD - HORIZONTAL
			WOOD - VERTICAL
NOTE: NOT ALL SYMBOLS MAY BE USED ON EACH PLAN			

NOT ISSUED
ISSUED
ISSUED FOR REFERENCE ONLY
ISSUED AS NOTED

SHEET INDEX - GENERAL

SHEET NO.	COVER SHEET	SHEET TITLE	BID DOCUMENTS 01/22/2025
G000	COVER SHEET		
G001	SHEET INDEX		
G002	ABBREVIATIONS		
G101	LOWER LEVEL LIFE SAFETY PLAN - AREA A		
G102	LOWER LEVEL LIFE SAFETY PLAN - AREA B		
G103	ICRA & PCRA NOTES AND CATEGORIES		
G201	LOWER LEVEL PHASING PLAN - OVERALL		
G202-A	LOWER LEVEL INFECTION CONTROL PLAN - AREA A		
G202-B	LOWER LEVEL INFECTION CONTROL PLAN - AREA B		

SHEET INDEX - CIVIL

SHEET NO.	EXISTING SURVEY	SHEET TITLE	BID DOCUMENTS 01/22/2025
V-101	EXISTING SURVEY		
CD101	DEMO PLAN		
CS101	SITE PLAN		
CD101	GRADING, UTILITY & EROSION CONTROL PLAN		
C-101	SITE DETAILS		

SHEET INDEX - STRUCTURAL

SHEET NO.	STRUCTURAL NOTE SHEET	SHEET TITLE	BID DOCUMENTS 01/22/2025
S001	STRUCTURAL NOTE SHEET		
S101	FOOTING & FOUNDATION PLAN		
S102	SLAB CUTTING PLAN		
S201	SECOND FLOOR FRAMING PLAN		
S202	ROOF FRAMING PLAN		
S301	FOOTING & FOUNDATION DETAILS		
S401	FRAMING DETAILS		
S402	FRAMING DETAILS		

SHEET INDEX - ARCHITECTURAL

SHEET NO.	LOWER LEVEL DEMOLITION PLAN - AREA A	SHEET TITLE	BID DOCUMENTS 01/22/2025
AD101-A	LOWER LEVEL DEMOLITION PLAN - AREA A		
AD101-B	LOWER LEVEL DEMOLITION PLAN - AREA B		
AD101-R	LOWER LEVEL DEMOLITION PLAN - AREA B RESTORATION		
AS100	LOWER LEVEL FLOOR PLAN-OVERALL		
AS101-A	LOWER LEVEL FLOOR PLAN - AREA A		
AS102-A	LOWER LEVEL DIMENSION PLAN - AREA A		
AS101-B	LOWER LEVEL FLOOR PLAN - AREA B		
AC101-A	LOWER LEVEL REFLECTED CEILING PLAN - AREA A		
AC101-B	LOWER LEVEL REFLECTED CEILING PLAN - AREA B		
AS101-R	LOWER LEVEL PLAN - AREA B RESTORATION		
AS103	ROOF PLAN - AREA B		
AS201	EXTERIOR ELEVATIONS		
AS211	INTERIOR ELEVATIONS		
AS212	INTERIOR ELEVATIONS		
AS301	BUILDING SECTIONS - TEMP TRAILER ENCLOSURE		
AS311	WALL SECTIONS - TEMP ENCLOSURE		
AS312	WALL SECTIONS - TEMP ENCLOSURE		
AS501	EXTERIOR PLAN DETAILS		
AS520	EXTERIOR SECTION DETAILS		
AS530	ROOF DETAILS		
AS540	INTERIOR PLAN DETAILS		
AS550	INTERIOR SECTION DETAILS		
AS601	WALL & PARTITION TYPES AND DETAILS		
AS602	DOOR SCHEDULE AND ELEVATIONS		
AS840	MOUNTING HEIGHTS		

SHEET INDEX - INTERIOR

SHEET NO.	LOWER LEVEL FINISH PLAN	SHEET TITLE	BID DOCUMENTS 01/22/2025
AF101	LOWER LEVEL FINISH PLAN		
AF102	LOWER LEVEL FINISH PLAN - TEMP TRAILER		
AF600	MATERIAL AND ROOM FINISH SCHEDULE AND DETAILS		
AW111	LOWER LEVEL WAYFINDING PLAN - AREA A		
AW112	LOWER LEVEL WAYFINDING PLAN - TEMP TRAILER - AREA B		
AW601	SIGNAGE DETAILS		

SHEET INDEX - EQUIPMENT

SHEET NO.	LOWER LEVEL EQUIPMENT PLAN - AREA A	SHEET TITLE	BID DOCUMENTS 01/22/2025
QH101-A	LOWER LEVEL EQUIPMENT PLAN - AREA A		

SHEET INDEX - FIRE ALARM & PROTECTION

SHEET NO.	FIRE PROTECTION COVERSHEET	SHEET TITLE	BID DOCUMENTS 01/22/2025
FS 000	FIRE PROTECTION COVERSHEET		
FSD 101	LOWER LEVEL DEMOLITION PLAN - FIRE PROTECTION		
FS 001	SPS TRAILER FLOOR PLAN - FIRE PROTECTION		
FS 101	LOWER LEVEL FLOOR PLAN - FIRE PROTECTION		
FS 500	FIRE PROTECTION DETAILS		
FA000	ELECTRICAL SYSTEMS COVERSHEET		
FA101	SPS TRAILER FLOOR PLAN - FIRE ALARM		
FA102	LOWER LEVEL FLOOR PLAN - FIRE ALARM		

SHEET INDEX - MECHANICAL

SHEET NO.	MECHANICAL SYMBOLS, ABBREVIATIONS, GENERAL NOTES	SHEET TITLE	BID DOCUMENTS 01/22/2025
M-001	MECHANICAL SYMBOLS, ABBREVIATIONS, GENERAL NOTES		
MD-101	MECHANICAL LOWER LEVEL - HVAC DEMO PLAN		
MD-102	MECHANICAL LOWER LEVEL - STEAM DEMO PLAN		
MH-101	MECHANICAL LOWER LEVEL - HVAC PLAN		
MH-102	MECHANICAL LOWER LEVEL - HVAC PRESSURE PLAN		
MH-103	MECHANICAL LOWER LEVEL - HVAC - SURROUNDING TAB		
MP-101	MECHANICAL PLAN - LOWER LEVEL STEAM PIPING		
M-301	MECHANICAL PIPING - STEAM FLOW DIAGRAM		
M-501	MECHANICAL DETAILS		
M-601	MECHANICAL SCHEDULES		

SHEET INDEX - PLUMBING

SHEET NO.	PLUMBING SYMBOLS, ABBREVIATIONS, GENERAL NOTES	SHEET TITLE	BID DOCUMENTS 01/22/2025
P-001	PLUMBING SYMBOLS, ABBREVIATIONS, GENERAL NOTES		
P-002	PLUMBING RO PHASING PLAN		
PD-101	PLUMBING UNDERGROUND - SANITARY DEMOLITION PLAN		
PD-102	PLUMBING LOWER LEVEL - RO AND DOMESTIC WATER DEMO PLANS		
PD-103	PLUMBING LOWER LEVEL - VENT AND AIR DEMO PLAN		
PL-101	PLUMBING LOWER LEVEL - UNDERGROUND SANITARY PLAN		
PL-102	PLUMBING LOWER LEVEL - DOMESTIC WATER PLANS		
PL-103	PLUMBING LOWER LEVEL - VENT AND AIR PLAN		
PP-101	PLUMBING PLANS - PROCESS PIPING - LOWER LEVEL RO - SPS		
PP-102	PLUMBING PLAN - PROCESS PIPING - LOWER LEVEL RO CORRIDOR		
PP-103	PLUMBING PLAN - PROCESS PIPING - LOWER LEVEL RO TEMPORARY TRAILER		
P-301	PLUMBING RO FLOW DIAGRAM		
P-501	PLUMBING DETAILS		
P-701	SANITARY WASTE AND VENT RISER DIAGRAMS		
P-702	DOMESTIC WATER RISER DIAGRAMS		



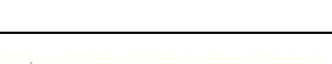

SHEET INDEX - ELECTRICAL

SHEET NO.	ELECTRICAL SYMBOLS, ABBREVIATIONS, GENERAL NOTES	SHEET TITLE	BID DOCUMENTS 01/22/2025
E-001	ELECTRICAL SYMBOLS, ABBREVIATIONS, GENERAL NOTES		
ES-101	ELECTRICAL SITE PLAN		
ESR-101	ELECTRICAL SITE RESTORATION PLAN		
ED-101	LOWER LEVEL - LIGHTING DEMOLITION PLAN		
ED-102	LOWER LEVEL - POWER DEMOLITION PLAN		
EL-101	LOWER LEVEL - LIGHTING PLAN		
EP-101	LOWER LEVEL - POWER PLAN		
EQ-101	LOWER LEVEL - EQUIPMENT POWER PLAN		
E-501	ONE-LINE DIAGRAM & ELECTRICAL DETAILS		
E-601	ELECTRICAL SCHEDULES		
E-602	ELECTRICAL SCHEDULES		

SHEET INDEX - TECHNOLOGY

SHEET NO.	TECHNOLOGY COVERSHEET	SHEET TITLE	BID DOCUMENTS 01/22/2025
T000	TECHNOLOGY COVERSHEET		
TD101	LOWER LEVEL DEMOLITION PLAN - TECHNOLOGY		
T001	SITE PLAN - TECHNOLOGY		
T101	LOWER LEVEL FLOOR PLAN - TECHNOLOGY		
T200	TECHNOLOGY ENLARGEMENT PLANS		
T500	TECHNOLOGY SCHEDULES		

BID DOCUMENT SUBMISSION

		<div>CONSULTANT</div> <div></div> <div>2882 106TH STREET DES MOINES IA 50322</div>	<div>DESIGNER OF RECORD</div> <div></div> <div>13605 1st Ave. N. #100 Plymouth, MN 55441 P 763.412.4000 F 763.412.4090 ae-mn.com Anderson Engineering of Minnesota, LLC Proj # 17639</div>	<div>STAMP</div> <div></div>	<div>Office of Construction and Facilities Management</div> <div> U.S. Department of Veterans Affairs</div>	Drawing Title	Phase	Project Title	Project Number
SHEET INDEX	BID DOCUMENTS					PERFORM SITE PREP FOR SPS EQUIPMENT	437-CSI-241		
Approved:						Location	Building Number		
	FULLY SPRINKLERED					FARGO, ND	9		
						Issue Date	Drawing Number		
						1/22/2025	GI001		
Revisions:	Date:								

1/21/2025 12:55:26 PM

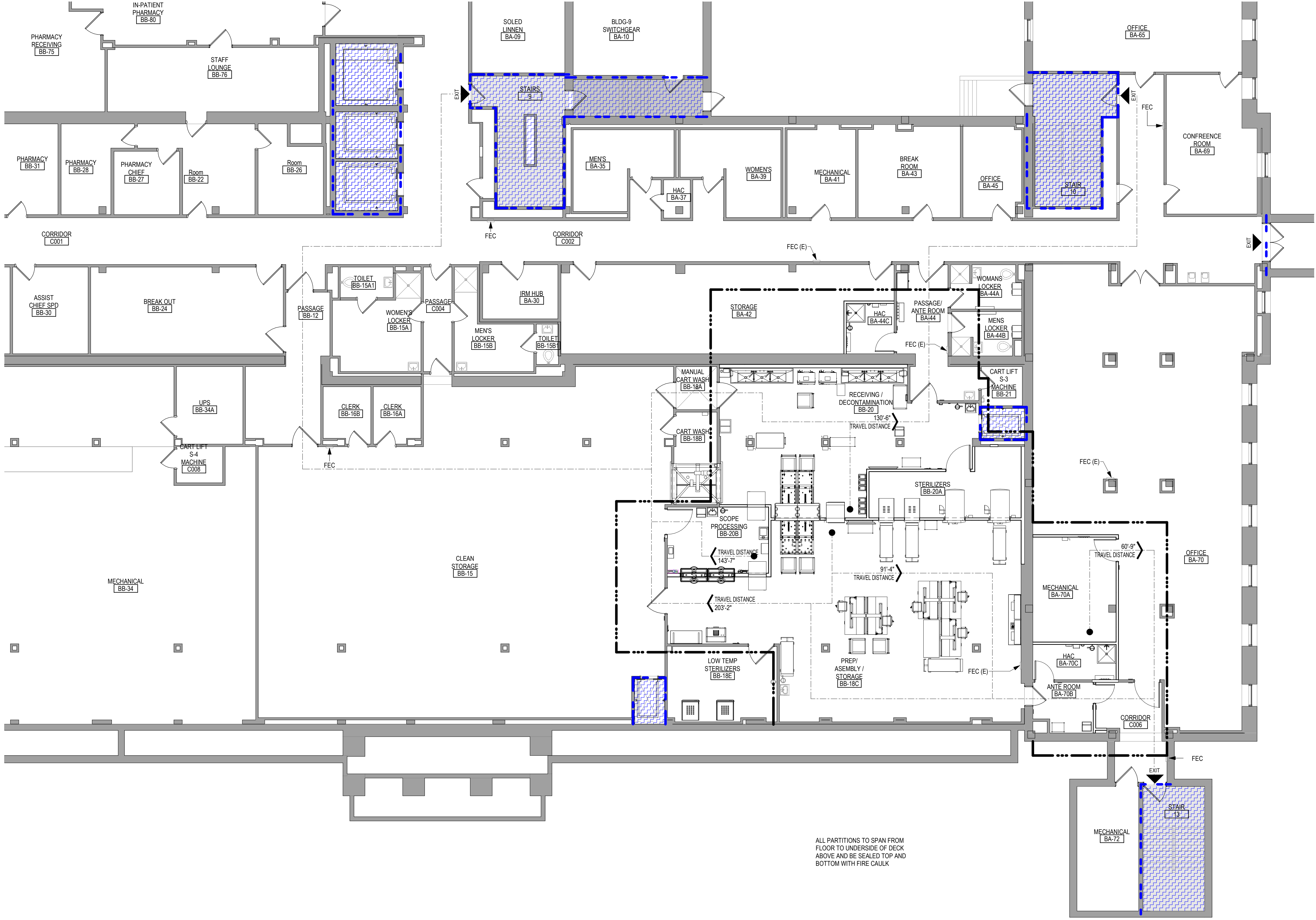
zqgmjAMEX.v4

ARCHITECTURAL ABBREVIATIONS														
A/C	AIR CONDITION	CNR	CORNER	F	FAHRENHEIT OR FEMALE	HST	HOIST	N	NORTH	RC	REMOTE CONTROL	T	TREAD OR THERMOSTAT	
A/C UNIT	AIR CONDITIONING UNIT	CNTR	COUNTER	FA	FIRE ALARM	HSS	HOLLOW STRUCTURAL STEEL	NA	NOT APPLICABLE	RCP	REFLECTED CEILING PLAN	T&M	TIME AND MATERIALS	
A/E	ARCHITECT/ENGINEER	CRTP	COUNTERTOP	FAB	FABRIC	HT	HEIGHT	NAT	NATURAL	RCVR	RECEIVER	TB	TOWEL BAR	
A/MA	AMERICAN ARCHITECTURAL MANUFACTURERS ASSN	CO	CARBON MONOXIDE	FAC	FACTORY	HVAC	HEATING, VENTILATING, AND AIR CONDITIONING	NATL	NATIONAL	RD	ROAD OR ROOF DRAIN	TBD	TACK BOARD	
AAP	ALARM ANNUNCIATOR PANEL	CO2	CARBON DIOXIDE	FACIL	FACILITY	HVY	HEAVY	NC	NOISE CRITERIA OR NURSE CALL	REC	RECESSED	TECH	TECHNICAL	
AB	ANCHOR BOLT	COL	COLUMN	FAS	FASCIA	HW	HOT WATER	NCOMBL	NONCOMBUSTIBLE	RECD	RECEIVED	TEL	TELEPHONE	
ABC	AGGREGATE BASE COURSE	COM	COMMON	FAS BD	FASCIA BOARD	HYD	HYDRANT	NEC	NATIONAL ELECTRICAL CODE	RECPT	RECEPTACLE	TEMP	TEMPERATURE OR TEMPORARY	
ACC	ACCESSIBLE	COMB	COMBINATION, COMBINED	FCU	FAN COIL UNIT	HYDR	HYDRAULIC	NEG	NEGATIVE	RECT	RECTANGLE	THERM	THERMAL	
ACI	AMERICAN CONCRETE INSTITUTE	COMM	COMMUNICATION	FCO	FLOOR CLEANOUT	IAQ	INDOOR AIR QUALITY	NEMA	NATIONAL ELECTRICAL MANUFACTURERS ASSN	REF	REFERENCE OR REFRIGERATOR	THK	THICKNESS	
ACT	ACOUSTICAL CEILING TILE	COMP	COMPONENT	FCTY	FACTORY	IBC	INTERNATIONAL BUILDING CODE	NEUT	NEUTRAL	REFR	REFRACTORY, REFRIGERATION	THRES	THRESHOLD	
ACS DR	ACCESS DOOR	CONC	CONCRETE	FD	FLOOR DRAIN	IC	INFECTION CONTROL	NFC	NATIONAL FIRE CODE	REG	REGISTER	THRU	THROUGH	
ACS FLR	ACCESS FLOOR	CONC FLR	CONCRETE FLOOR	FDC	FIRE DEPARTMENT CONNECTION	ICW	INFECTION CONTROL WALL	NFPA	NATIONAL FIRE PROTECTION ASSOCIATION	REINF	REINFORCE	THRUOUT	THROUGHOUT	
ACS PNL	ACCESS PANEL	COND	CONDENSER OR CONDITION	FDTN	FOUNDATION	ID	INSIDE DIAMETER	NIC	NOT IN CONTRACT	REPL	REPAIR	TMPD	TEMPERED	
ACST	ACOUSTIC	CONF	CONFERENCE	FE	FIRE EXTINGUISHER	ID NO	IDENTIFICATION NUMBER	NO	NUMBER	REPL	REPLACE	TMPD GL	TEMPERED GLASS	
AD	AREA DRAIN	CONN	CONNECT	FEC	FIRE EXTINGUISHER CABINET	ILLUM	ILLUMINATION	NOM	NOMINAL	REQ	REQUIRE	TN	TRUE NORTH	
ADA	AMERICANS WITH DISABILITIES ACT	CONSTR	CONSTRUCTION	FF	FINISH FACE	INCL	INCLUDED	NR	NOISE REDUCTION	REQD	REQUIRED	TO	TOP OF	
ADC	AUTOMATIC DOOR CLOSER	CONT	CONTINUE	FF EL	FINISH FLOOR ELEVATION	IND	INDEPENDENT OR INDUSTRIAL	NRC	NOISE REDUCTION COEFFICIENT	RET	RETURN	TO FDN	TOP OF FOUNDATION	
ADDL	ADDITIONAL	CONTR	CONTRACTOR	FF&E	FURNITURE, FIXTURE, AND EQUIPMENT	INFO	INFORMATION	NRCA	NATIONAL ROOFING CONTRACTORS ASSOCIATION	REV	REVISION	TOB	TOP OF BEAM	
ADDN	ADDITION	COORD	COORDINATE	FHC	FIRE HOSE CABINET	INSUL	INSULATION	NRP	NONREMOVABLE	RFG	ROOFING	TOM	TOP OF MASONRY	
ADH	ADHESIVE	CORR	CORRIDOR	FHP	FULL HEIGHT PARTITION	INT	INTERIOR	NS	NARROW STYLE	RFI	REQUEST FOR INFORMATION	COP	TOP OF PARAPET	
ADJ	ADJACENT, ADJOINING, OR ADJUSTABLE	CPM	CRITICAL PATH METHOD	FIG	FIGURE	INTL	INTERNATIONAL	NUM	NUMERAL	RFP	REQUEST FOR PROPOSAL	TOS	TOP OF STEEL	
ADMIN	ADMINISTRATION	CPRS	COMPRESSIBLE	FIL	FILL	INH	INSTANTANEOUS WATER HEATER	O/O	OUT TO OUT	RFS	ROOM FINISH SCHEDULE	TOW	TOP OF WALL	
AFF	ABOVE FINISHED FLOOR	CR	CARD READER	FIN	FINISH	JAN	JANITOR	O	OXYGEN	RL	ROOF LEADER	TPD	TOILET PAPER DISPENSER	
AFG	ABOVE FINISHED GRADE	CRS	COLD ROLLED STEEL	FIN FLR	FINISH FLOOR	KD	KILN DRIED OR KNOCKED DOWN	OA	OUTSIDE AIR OR OVERALL	RLG	RAILING	TRANS	TRANSOM	
AFS	ABOVE FINISHED SLAB	CRSI	CONCRETE REINFORCING STEEL INSTITUTE	FIN GR	FINISH GRADE	KIT	KITCHEN	OC	ON CENTER	RM	ROOM	TRTD	TREATED	
AGC	ASSOCIATED GENERAL CONTRACTORS	CSB	CONCRETE SPLASH BLOCK	FIN WD	FINISH WOOD	KO	KNOCKOUT	OCC	OCCUPY	RM LT	NURSE CALL LIGHT/ROOM LIGHT	TS	TUBE STEEL	
AGGR	AGGREGATE	CSG	CASING	FIXT	FIXTURE	KPL	KICKPLATE	OCT	OCTAGON	RND	ROUND	TSTAT	THERMOSTAT	
AHJ	AUTHORITY HAVING JURISDICTION	CSI	CONSTRUCTION SPECIFICATIONS INSTITUTE	FL	FLOORLINE	L	ANGLE	OD	OUTSIDE DIAMETER, OUTSIDE DIMENSION	RO	ROUGH OPENING	TV	TELEVISION	
AHR	ANCHOR	CSK	COUNTER SUNK	FLASH	FLASHING	LAB	LABORATORY	OD	OUTSIDE DIAMETER/OUTSIDE DIMENSION	ROW	RIGHT OF WAY	TYP	TYPICAL	
AHU	AIR HANDLING UNIT	CSMT	CASEMENT	FLDG	FOLDING	LAD	LADDER	OF/CI	OWNER FURNISHED/CONTRACTOR INSTALLED	RS	ROUGH SAWN	U	HEAT TRANSFER COEFFICIENT	
AIA	AMERICAN INSTITUTE OF ARCHITECTS	CSWK	CASEWORK	FLEX	FLEXIBLE	LAM	LAMINATE	OFD	OVERFLOW DRAIN	RSV	RESILIENT SHEET VINYL	UC	UNDERCUT	
AISC	AMERICAN INSTITUTE OF STEEL CONSTRUCTION	CTG	COATING	FLG	FLOORING	LAM GL	LAMINATED GLASS	OFD	OVERFLOW DRAIN	RT	RIGHT	UGND	UNDERGROUND	
ALT	ALTERNATE	CTR	CENTER	FLR	FLOOR	LAU	LAUNDRY	OFF	OFFICE	RV	ROOF VENT	UL	UNDERWRITERS LABORATORIES	
ALT NO	ALTERNATE NUMBER	CTRL	CONTROL	FLR FIN	FLOOR FINISH	LAV	LAVATORY	OFFO	OWNER FURNISHED/OWNER INSTALLED	RVS	REVERSE	ULT	ULTIMATE	
ALUM	ALUMINUM	CTV	CABLE TELEVISION	FLR SK	FLOOR SINK	LBR	LUMBER	OH DR	OVERHEAD (COILING) DOOR	RWL	RAIN WATER LEADER	UNFIN	UNFINISH	
AMT	AMOUNT	CU FT	CUBIC FEET	FLUR	FLOURESCENT	LBS	POUND	OPH	OPPOSITE HAND	SA	SOLID SURFACE	UNO	UNLESS NOTED OTHERWISE	
ANOD	ANODIZE	CU IN	CUBIC INCH	FLUR FIX	FLOURESCENT FIXTURE	LCS	LOCKABLE CHARTING STATION/MED CABINET	OPNG	OPENING	S	SUPPLY AIR	UPS	UNINTERRUPTIBLE POWER SUPPLY	
ANSI	AMERICAN NATIONAL STANDARDS INSTITUTE	CU YD	CUBIC YARD	FM	FACTORY MUTUAL	LD BRG	LOAD-BEARING	OPP	OPPOSITE	SALV	SALVAGE	URN	URN	
ANT	ANTENNA	CURT	CURTAIN	FM-G	FACTORY MUTUAL GLOBAL	LDR	LEADER	OPR	OPERABLE	SAMP	SAMPLE	UTIL	UTILITY	
AP	ACCESS PANEL	CYL	CYLINDER	FO	FINISHED OPENING	LED	LIGHT EMITTING DIODE	OPR	OPERABLE	SAN	SANITARY	UV	ULTRAVIOLET	
APA	AMERICAN PLYWOOD ASSOCIATION	CYL L	CYLINDER LOCK	FOC	FACE OF CONCRETE OR FACE OF CURB	LF	LINEAR FEET (FOOT)	OPT	OPTIONAL	SB	SPLASH BLOCK	VAC	VACUUM	
APC	ARCHITECTURAL PRECAST CONCRETE	D	DEPTH OR PENNY (NAIL)	FOB	FACE OF FINISH	LIB	LIBRARY	OR	OPERATING ROOM OR OUTSIDE RADIUS	SBS	STYRENE BUTADIEN STYRENE	VAR	VARIES	
APPD	APPROVED	DAT	DATUM	FOM	FACE OF MASONRY	LIN	LINEAR	ORD	ORDNANCE OR OVERFLOW ROOF DRAIN	SBSTR	SUBSTRATE	VEH	VEHICLE	
APPROX	APPROXIMATE	DBL	DOUBLE	FOS	FACE OF SLAB OR FACE OF STUD	LIQ	LIQUID	ORG	ORGANIC	SC	SHARPS CONTAINER	VENT	VENTILATION	
AR	ARCHITECT	DBL GLZ	DOUBLE GLAZE	FOUNT	FOUNTAIN	LKR	LOCKER	ORIG	ORIGINAL	SCH	SCHOOL	VERT	VERTICAL	
ASB	ASBESTOS	DCS	DIAPER CHANGING STATION	FOV	FACE OF WALL	LKR RM	LOCKER ROOM	ORN	ORNAMENTAL	SCHED	SCHEDULE	VEST	VESTIBULE	
ASI	ARCHITECT'S SUPPLEMENTAL INSTRUCTION	DP	DECORATIVE PANEL	FR	FIRE PROTECTION OR FIREPROOF	LL	LEAD LINED	OSHA	OCCUPATIONAL SAFETY AND HEALTH ADMINISTRATION	SCHEM	SCHEMATIC	VFD	VARIABLE FREQUENCY DRIVE	
ASKLR	AUTOMATIC SPRINKLER	DEG	DEGREE	FR	FIRE RATING, FIRE RESISTANT, OR FRAME	LMST	LIMESTONE	OUT	OUTLET	SCP	SCUPPER	VIC	VICINITY	
ASPH	ASPHALT	DEL	DELETE	FR SNK	FLUSHING RIM SINK	LRG	LARGE	OZ	OUNCE	SCRN	SCREEN	VID	VIDEO	
ASSN	ASSOCIATION	DEMO	DEMOLITION	FREQ	FREQUENCY	LRV	LOUVERED ROOF VENT	P	PAINT	SCT	SHOWER CURTAIN TRACK	VIF	VERIFY IN FIELD	
ASTM	AMERICAN SOCIETY FOR TESTING AND MATERIALS	DEPT	DEPARTMENT	FRMG	FRAMING	LS	LIGHT SWITCH	PARA	PARAGRAPH	SCWD	SOLID CORE WOOD DOOR	VNR	VENEER	
ATCH	ATTACHMENT	DET	DETAIL	FRZ	FREEZER	LT	LIGHT	PART	PARTIAL	SD	SMOKE DETECTOR/SOAP DISPENSER	VOC	VOLATILE ORGANIC COMPOUND	
ATM	AUTOMATIC TELLER MACHINE	DF	DRINKING FOUNTAIN	FRZ	FREEZER	LT GA	LIGHT GAGE	PAT	PATTERN	SDG	SIDING	VOL	VOLUME	
AUTO	AUTOMATIC	DIA	DIAMETER	FS	FEDERAL SPECIFICATION	LTG	LIGHTING	PB	PUSHBUTTON	SECT	SECTION	VIA	VAPOR RETARDER	
AUX	AUXILIARY	DIAG	DIAGONAL	FSB	FOLDING SHOWER BENCH	LTG	LIGHTING	PBD	PARTICLEBOARD	SEG	SEGMENT	VTR	VENT THROUGH ROOF	
AV	AUDIO VISUAL	DIFF	DIFFERENCE OR DIFFUSER	FSTNR	FASTENER	LTVG	LOUVERED	PC	PIECE, POLYCARBONATE OR PORTLAND CEMENT	SEL	SELECT	W	WITH	
AVG	AVERAGE	DIM	DIMENSION	FT	FEET OR FOOT	LVD	LOUVERED	PCA	PORTLAND CEMENT ASSOCIATION	SEP	SEPARATE	W/O	WITHOUT	
AW	ACID WASTE	DIR	DIRECTION	FTG	FOOTING	LVR	LOUVER	PCB	PRECAST CONCRETE	SF	SQUARE FOOT (FEET)	WBL	WOOD BLOCKING	
AWI	ARCHITECTURAL WOODWORKING INSTITUTE	DISP	DISPENSER	FURG	FURRING	LWC	LIGHTWEIGHT CONCRETE	PCCP	CONCRETE PAVEMENT	SFTWD	SOFTWOOD	WC	WATER CLOSET	
AWPA	AMERICAN WOOD PRESERVERS' ASSOCIATION	DIST	DISTANCE	FURN	FURNISH OR FURNITURE	LWIC	LIGHTWEIGHT INSULATING CONCRETE	PCD	PAPER CUP DISPENSER	SGD	SLIDING GLASS DOOR	WD	WOOD	
AWG	AMERICAN WELDING SOCIETY	DIV	DIVIDE OR DIVISION	FUT	FUTURE	LVR	LAYER	PCF	POUNDS PER CUBIC FOOT	SGL	SINGLE	WDF	WINDOW	
B PL	BASE PLATE	DL	DEAD LOAD	FVC	FIRE VALVE CABINET	MACH	MACHINE	PCP	PORTLAND CEMENT PLASTER	SHR	SHOWER	WF	WIDE FLANGE	
BAT	BATTEN	DOC	DOCUMENT	GA	GAGE OR GYPSUM ASSOCIATION	MACH RM	MACHINE ROOM	PCT	PORTLAND CEMENT PLASTER	SHR HD	SHOWER HEAD	WFR	WOOD FRAME	
BD	BOARD	DR	DOOR, DRAIN, DRESSING ROOM, OR DRIVE	GAL	GALLON	MAINT	MAINTENANCE	PEDESTAL	PRVACY CURTAIN TRACK	SHRD	SHOWER DRAIN	WFS	WOOD FURRING STRIPS	
BD FT	BOARD FEET (FOOT)	DR CL	DOOR CLOSER	GALV	GALVANIC OR GALVANIZED	MAN	MANUAL	PED	PEDESTAL	SHT	SHEET	WH	WATER HEATER	
BEV	BEVEL	DR FR	DOOR FRAME	GALV STL	GALVANIZED STEEL	MAT	MATERIAL	PEN	PENETRATE	SHTG	SHEATHING	WHSE	WAREHOUSE	
BHMA	BUILDER'S HARDWARE MANUFACTURER'S ASSOCIATION	DR OPNG	DOOR OPENING	GB	GRAB BAR	MATV	MASTER ANTENNA TELEVISION SYSTEM	PERF	PERFORATED	SHV	SHELVING	WP	WATERPROOFING	
BI FLD DR	BIFOLDING DOORS	DS	DOWNSPOUT	GC	GENERAL CONTRACTOR	MAX	MAXIMUM	PERIM	PERIMETER	SIM	SIMILAR	WPM	WATERPROOF MEMBRANE	
BITUM	BITUMINOUS	DSGN	DESIGN	GD	GUARD	MBD	MARKER BOARD	PERP	PERPENDICULAR	SJ	SCORED JOINT	WR	WEATHER RESISTANT	
BKG	BACKING	DW	DISHWASHER	GDR	GUARD RAIL	ME	M							

NOTE:
• MOBILE ICRA CONTAINMENT SYSTEMS WILL NEED TO BE USED IN AREAS OF WORK THAT ARE OUTSIDE OF THE INDICATED ICRA / CONSTRUCTION BARRIER LOCATIONS. SEE MEPT DRAWINGS FOR ADDITIONAL AREAS OF WORK.
• SEE SHEET GC100 FOR INFECTION CONTROL RISK ASSESSMENT & PRE-CONSTRUCTION RISK ASSESSMENT NOTES AND CATEGORIES
• SEE SHEET GC101 FOR PHASING INFORMATION
• CEILING TILE MUST BE REPLACED AT THE END OF EACH SHIFT FOR WORK OUTSIDE OF CONSTRUCTION BARRIERS. IF TILES CAN BE REPLACED THE SPRINKLER SYSTEM MAY BE CONSIDERED OUT OF SERVICE IN THSES AREAS AND A 1 HOUR RATED CONSTRUCTION BARRIER WILL BE REQUIRED.

DOOR

ICRA / 1 HOUR - CONSTRUCTION BARRIER LOCATION



ALL PARTITIONS TO SPAN FROM FLOOR TO UNDERSIDE OF DECK ABOVE AND BE SEALED TOP AND BOTTOM WITH FIRE CAULK

PROJECT DESCRIPTION	
REMODELING AND SITE PREP FOR EQUIPMENT REPLACEMENT IN THE STERILE PROCESSING DEPARTMENT. SITE PREPARATION FOR TEMPORARY STERILE PROCESSING DEPARTMENT TRAILER AND CONNECTING ENCLOSURE FROM TRAILER TO BUILDING.	
GENERAL TYPE OF PROJECT	
NEW BUILDING	YES NO
ADDITION	YES NO
REMODEL	YES NO
AUTHORITIES HAVING JURISDICTION (AHJ's)	
THE JOINT COMMISSION (JC)	YES NO
U.S. DEPARTMENT OF VETERANS AFFAIRS (VA)	YES NO
APPLICABLE REGULATIONS	
2024 NFPA 101 (LIFE SAFETY CODE)	
2024 IBC	
VA PHYSICAL SECURITY AND RESILIENCE DESIGN MANUAL (PSRDM)	
ABA STANDARDS (2015) (ABAAS)	
VA BARRIER FREE DESIGN STANDARD (PG-18-13)	
NFPA NATIONAL FIRE CODES (EXCEPTION: NFPA 5000 & 900)	
2022 FGI GUIDELINES	
OSHA STANDARDS	
VA SEISMIC DESIGN REQUIREMENTS H-18-8	
NATIONAL ELECTRIC CODE (NEC)	
ASME BOILER AND PRESSURE VESSEL CODE	
ASME CODE FOR PRESSURE PIPING	
BUILDING CODE REQUIREMENTS FOR REINFORCED CONCRETE, AMERICAN CONCRETE INSTITUTE AND CONEMARY (ACI 318)	
MANUAL OF STEEL CONSTRUCTION, LOAD AND RESISTANCE FACTOR DESIGN SPECIFICATIONS FOR STRUCTURAL STEEL BUILDINGS, AMERICAN INSTITUTE OF STEEL CONSTRUCTION (AISC)	
ENERGY POLICY ACT OF 2005 (EPACT)	
DOE INTERIM FINAL RULE: ENERGY CONSERVATION STANDARDS FOR NEW FEDERAL, COMMERCIAL AND MULTI-FAMILY HIGH-RISE RESIDENTIAL BUILDINGS AND NEW LOW-RISE RESIDENTIAL BUILDINGS, 10 CFR PARTS 431.434 AND 435	
FEDERAL LEADERSHIP IN HIGH PERFORMANCE AND SUSTAINABLE BUILDINGS, MEMORANDUM OF UNDERSTANDING (MOU)	
EXECUTIVE ORDER 14057	
THE PROVISIONS FOR CONSTRUCTION AND SAFETY SIGNS, STATED IN THE GENERAL REQUIREMENTS SECTION 01010 OF THE VA MASTER CONSTRUCTION SPECIFICATION	
VENTILATION FOR ACCEPTABLE INDOOR AIR QUALITY - ASHRAE STANDARD 62.1-2004	
SAFETY STANDARD FOR REFRIGERATION SYSTEMS - ASHRAE STANDARD 15 -2007	
VA FIRE PROTECTION DESIGN MANUAL	
VA DIRECTIVES, DESIGN MANUALS, MASTER SPECIFICATIONS, VA NATIONAL CAD STANDARD APPLICATION GUIDE, AND OTHER GUIDANCE ON THE TECHNICAL INFORMATION LIBRARY (TIL)	

OCCUPANCY CLASSIFICATION(S)				
OCCUPANCIES (LSC CH 12-42)	BUSINESS	YES	NO	
CHANGE OF OCCUPANCY? (If Remodeling)				
SEPARATED OCCUPANCIES?	2018 LSC (TABLE 6.1.14.1)			
FIRE BARRIER RATING(S)	(Section 8.3) SEE LIFE SAFETY PLANS			
TYPE(S) OF CONSTRUCTION				
CONSTRUCTION TYPE(S)	SPS AREA AND MAIN HOSPITAL (NAPA 220 TABLE 4.1.1) II (222) TEMPORARY TRAILER CONNECTOR (NAPA 220 TABLE 4.1.1) V (000)			
AREA SEPARATIONS / FIRE WALLS		SEE LIFE SAFETY PLANS		
EGRESS			YES	NO
AREAS OF REFUGE REQUIRED				
ACCESSIBLE MEANS OF EGRESS ("MOE") REQUIRED				
ELEVATOR REQUIRED AS MEANS OF EGRESS				
MEANS OF EGRESS CAPACITY (width in inches)			34"	
FIRE-RESISTIVE REQUIREMENTS				
SPS & MAIN HOSPITAL II(222)		RATING (HRS)	TEST	
STRUCTURAL FRAME				
COLUMNS	2	ASTM E136		
GIRDERS	2	ASTM E136		
TRUSSES	2	ASTM E136		
BEARING WALLS				
EXTERIOR BEARING WALLS	2	ASTM E136		
INTERIOR BEARING WALLS	2	ASTM E136		
NON-BEARING WALLS AND PARTITIONS				
EXTERIOR	0	NA		
INTERIOR	See Life Safety Plans			
FLOOR CONSTRUCTION				
FLOOR/CEILING ASSEMBLY	2	ASTM E136		
PRIME & SEC. FLOOR BEAMS, JOISTS	2	ASTM E136		
ROOF CONSTRUCTION				
ROOF/CEILING ASSEMBLY	1	ASTM E136		
OTHER				
SHAFTS AND EXIT PASSAGEWAYS	2	ASTM E136		
EXTERIOR DOORS AND WINDOWS	0	NA		

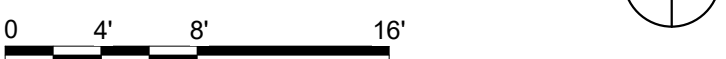
FIRE-RESISTIVE REQUIREMENTS			
TEMP TRAILER CONNECTOR V(000)	RATING (HRS)	TEST	
STRUCTURAL FRAME			
COLUMNS	0	NA	
GIRDERS	0	NA	
TRUSSES	0	NA	
BEARING WALLS			
EXTERIOR BEARING WALLS	0	NA	
INTERIOR BEARING WALLS	0	NA	
NON-BEARING WALLS AND PARTITIONS			
EXTERIOR	0	See Life Safety Plans	
INTERIOR	See Life Safety Plans		
FLOOR CONSTRUCTION			
FLOOR/CEILING ASSEMBLY	0	NA	
PRIME & SEC. FLOOR BEAMS, JOISTS	0	NA	
ROOF CONSTRUCTION			
ROOF/CEILING ASSEMBLY	0	NA	
OTHER			
SHAFTS AND EXIT PASSAGEWAYS	0	NA	
EXTERIOR DOORS AND WINDOWS	0	NA	

LIFE SAFETY SYMBOLS

SMOKE TIGHT ASSEMBLY	1 HOUR FIRE & SMOKE BARRIER
1 HOUR FIRE BARRIER	2 HOUR FIRE & SMOKE BARRIER
2 HOUR FIRE BARRIER	3 HOUR FIRE & SMOKE BARRIER
3 HOUR FIRE BARRIER	TRAVEL DISTANCE
EXIT	EXIT DISCHARGE
HORIZONTAL EXIT	EXIT ACCESS
FE	FIRE EXTINGUISHER
LIMITS OF CONSTRUCTION	OCCUPANCY SEPARATION
SMOKE COMPARTMENT BOUNDARY	HEALTH CARE SUITE
SHAFT	ADJACENT SYMBOLS SHOW PARTITION RATING AND DAMPER REQUIREMENTS
HAZARDOUS USE	ADJACENT SYMBOLS SHOW PARTITION RATING. OPENINGS REQUIRE CLOSER & LATCH
EXIT PASSAGEWAY	RATE AS STAIR ALL OPENINGS TO BE RATED AS STAIR SHAFT
CORRIDOR	WALLS TO LIMIT THE TRANSFER OF SMOKE
ADJUNCT CORRIDOR or PSYCHIATRIC AREA	or CONSTRUCTED WITH MIN. 4'-0" CLEAR WITH (PER CHAPTER 19)

NOTE: NOT ALL SYMBOLS MAY BE USED ON EACH PLAN

1 LOWER LEVEL LIFE SAFETY PLAN
1/8" = 1'-0"



CONSULTANT 2882 106TH STREET DES MOINES IA 50322	DESIGNER OF RECORD 13605 1st Ave. N. #100 Plymouth, MN 55441 P 763.412.4000 F 763.412.4090 ae-mn.com Anderson Engineering of Minnesota, LLC Proj # 17639	STAMP 	Office of Construction and Facilities Management U.S. Department of Veterans Affairs	Drawing Title LOWER LEVEL LIFE SAFETY PLAN - AREA A Approved:	Phase BID DOCUMENTS FULLY SPRINKLERED	Project Title PERFORM SITE PREP FOR SPS EQUIPMENT Location FARGO, ND Issue Date 1/22/2025 Checked Drawn GJB	Project Number 437-CSI-241 Building Number 9 Drawing Number G1101
---	---	------------------	--	---	--	--	---

BID DOCUMENT SUBMISSION

ICRA / 1 HOUR - CONSTRUCTION
BARRIER LOCATION

TRAILER CONNECTION			
T-01			

PHARMACY
STORAGE

— TYPE V(000)

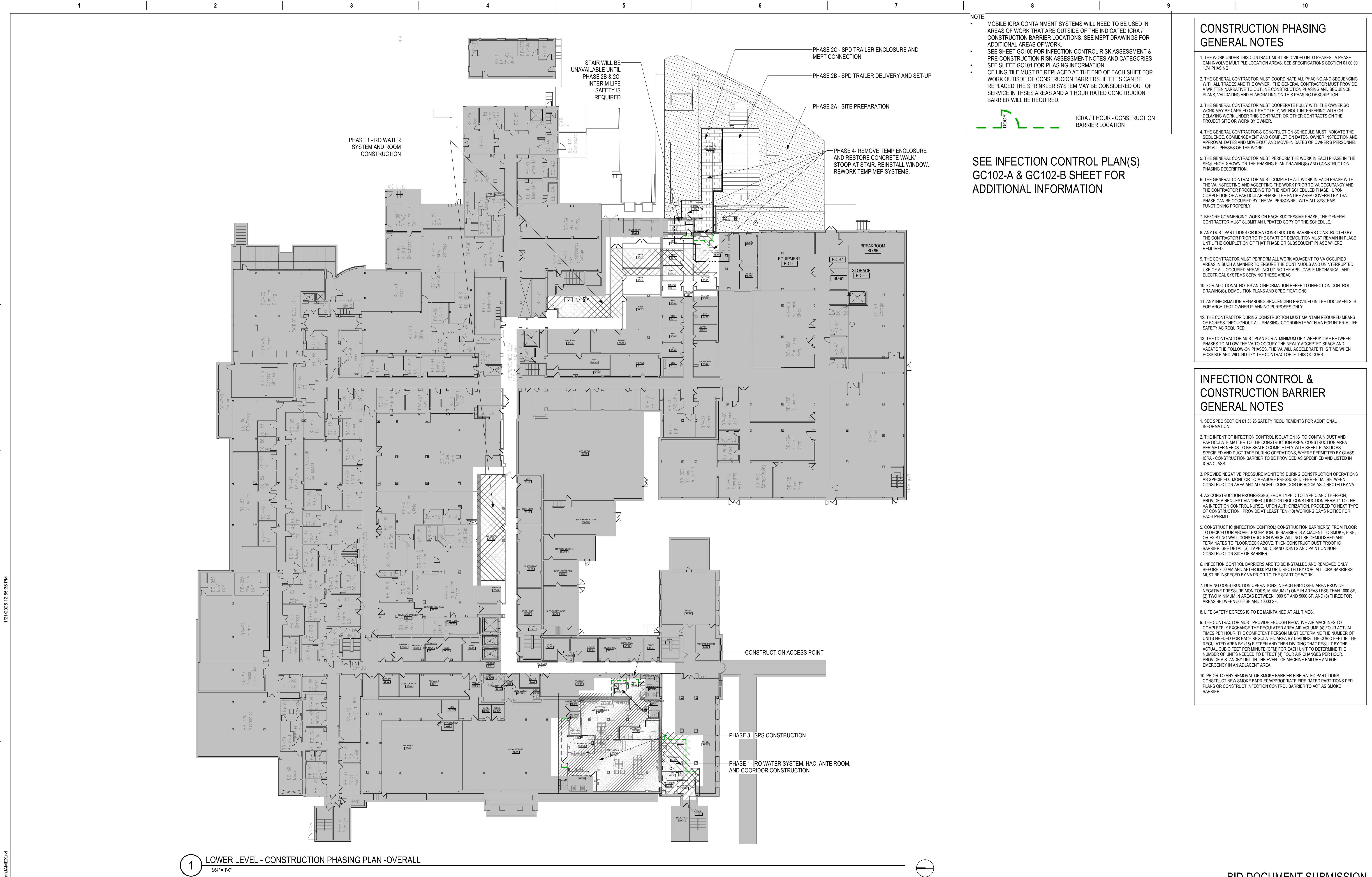
— EXISTING BUSINESS
OCCUPANCY

NOTE: NOT ALL SYMBOLS MAY BE USED ON EACH PLAN

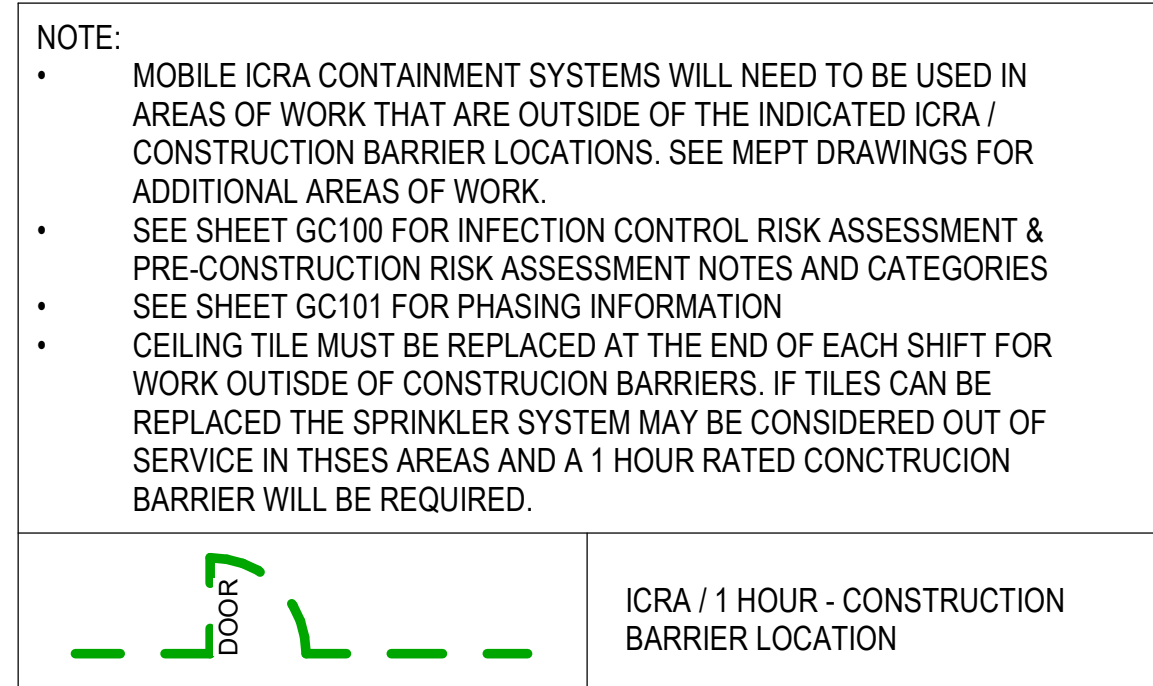
FIRE-RESISTIVE REQUIREMENTS			
TEMP. TRAILER CONNECTOR V(000)	RATING (HRS)	TEST	
STRUCTURAL FRAME			
COLUMNS	0	NA	
GIRDERS	0	NA	
TRUSSES	0	NA	
BEARING WALLS			
EXTERIOR BEARING WALLS	0	NA	
INTERIOR BEARING WALLS	0	NA	
NON-BEARING WALLS AND PARTITIONS			
EXTERIOR	0	NA	
INTERIOR	See Life Safety Plans		
FLOOR CONSTRUCTION			
FLOOR/CEILING ASSEMBLY	0	NA	
PRIME & SEC. FLOOR BEAMS, JOISTS	0	NA	
ROOF CONSTRUCTION			
ROOF/CEILING ASSEMBLY	0	NA	
OTHER			
SHAFTS AND ELEV. PASSAGeways	0		
EXTERIOR DOORS AND WINDOWS	0	NA	

$$1/8^{\circ} = 1'-0''$$

GI102



<div>Revisions:</div> <div>Date:</div>		<div>CONSULTANT</div> <div>IMEG</div> <div>2882 106TH STREET DES MOINES IA 50322</div>		<div>DESIGNER OF RECORD</div> <div>ANDERSON</div> <div>13605 1st Ave. N. #100 Plymouth, MN 55441 P 763.412.4000 F 763.412.4090 ae-mn.com Anderson Engineering of Minnesota, LLC Proj # 17639</div>		<div>STAMP</div> <div>TOM OLESAK 2908 ARCHITECT STATE OF MINNESOTA</div>	<div>Office of Construction and Facilities Management</div> <div>VA U.S. Department of Veterans Affairs</div>	<div>Drawing Title</div> <div>LOWER LEVEL PHASING PLAN - OVERALL</div> <div>Approved:</div>	<div>Phase</div> <div>BID DOCUMENTS</div> <div>FULLY SPRINKLERED</div>	<div>Project Title</div> <div>PERFORM SITE PREP FOR SPS EQUIPMENT</div> <div>Location FARGO, ND</div> <div>Issue Date 1/22/2025</div> <div>Checked JLU</div> <div>Drawn GJB</div>	<div>Project Number</div> <div>437-CSI-241</div> <div>Building Number</div> <div>9</div> <div>Drawing Number</div> <div>GC101</div>
--	--	--	--	--	--	--	---	---	--	---	---



1. THE WORK UNDER THIS CONTRACT MUST BE DIVIDED INTO PHASES. A PHASE CAN INVOLVE MULTIPLE LOCATION AREAS. SEE SPECIFICATIONS SECTION 01 00 00 1.71 PHASING.
2. THE GENERAL CONTRACTOR MUST COORDINATE ALL PHASING AND SEQUENCING WITH ALL TRADES AND THE OWNER. THE GENERAL CONTRACTOR MUST PROVIDE A DETAILED SCHEDULEATIVE TO OUTLINE THE CONTRACT PHASING AND SEQUENCE PLANS, VALIDATING AND ELABORATING ON THIS PHASING DESCRIPTION.
3. THE GENERAL CONTRACTOR MUST COOPERATE FULLY WITH THE OWNER SO WORK MAY BE CARRIED OUT SMOOTHLY, WITHOUT INTERFERING WITH OR DELAYING THE OWNER'S OPERATION OF THE FACILITY OR OTHER CONTRACTS ON THE PROJECT SITE OR WORK BY OWNER.
4. THE GENERAL CONTRACTOR'S CONSTRUCTION SCHEDULE MUST NOTICATE THE SEQUENCE, COMMENCEMENT AND COMPLETION DATES, OWNER INSPECTION AND APPROVAL DATES AND MOVE-OUT AND MOVE-IN DATES OF OWNERS PERSONNEL FOR ALL PHASES OF THE WORK.
5. THE GENERAL CONTRACTOR MUST PERFORM THE WORK IN EACH PHASE IN THE SEQUENCE SHOWN ON THE PHASING PLAN (DRAWINGS) AND CONSTRUCTION PHASING DESCRIPTION.
6. THE GENERAL CONTRACTOR MUST COMPLETE ALL WORK IN EACH PHASE WITH THE VA INSPECTING AND ACCEPTING THE WORK PRIOR TO VA OCCUPANCY AND THE CONTRACTOR PROCEEDING TO THE NEXT SCHEDULED PHASE. UPON COMPLETION OF EACH PHASE, THE ENTIRE AREA COVERED BY THAT PHASE CAN BE OCCUPIED BY THE VA PERSONNEL WITH ALL SYSTEMS FUNCTIONING PROPERLY.
7. BEFORE COMMENCING WORK ON EACH SUCCESSIVE PHASE, THE GENERAL CONTRACTOR MUST SUBMIT AN UPDATED COPY OF THE SCHEDULE.
8. ANY JUST PARTITIONS OR IGA-CONSTRUCTION BARRIERS RESTRICTED BY THE CONTRACTOR PRIOR TO THE START OF DEMOLITION MUST BE REMOVED IN PLACE UPON COMPLETION OF THAT PHASE OR SUBSEQUENT PHASE WHERE REQUIRED.
9. THE CONTRACTOR MUST PERFORM ALL WORK ADJACENT TO VA OCCUPIED AREAS IN SUCH A MANNER TO ENSURE THE CONTINUOUS AND UNINTERRUPTED USE OF ALL OCCUPIED AREAS, INCLUDING THE APPLICABLE MECHANICAL AND ELECTRICAL SYSTEMS SERVICING THESE AREAS.
10. FOR ADDITIONAL NOTES AND INFORMATION REFER TO INFECTION CONTROL DRAWINGS, DEMOLITION PLANS AND SPECIFICATIONS.
11. ANY INFORMATION REGARDING SCHEDULES PROVIDED IN THE DOCUMENTS IS FOR ARCHITECT OWNER PLANNING PURPOSES ONLY.
12. THE CONTRACTOR DURING CONSTRUCTION MUST MAINTAIN REQUIRED MEANS OF EGRESS THROUGHOUT ALL PHASING. COORDINATE WITH VA FOR INTERIM LIFE SAFETY AS REQUIRED.
13. THE CONTRACTOR MUST PLAN FOR A MINIMUM OF 4 WEEKS TIME BETWEEN PHASES TO ALLOW THE VA TO OCCUPY THE NEWLY ACCEPTED SPACE AND FOR THE CONTRACTOR TO REWORK OR REPAIR ANY DAMAGE TO THE BUILDING DURING THAT TIME WHEN POSSIBLE AND WILL NOTIFY THE CONTRACTOR IF THIS OCCURS.

1. SEE SPEC SECTION 01 35 26 SAFETY REQUIREMENTS FOR ADDITIONAL INFORMATION
2. THE INTENT OF INFECTION CONTROL ISOLATION IS TO CONTAIN DUST AND PARTICULATE MATTER TO THE CONSTRUCTION AREA, CONSTRUCTION AREA PERIMETER NEEDS TO BE SEALED COMPLETELY WITH SHEET PLASTIC AS WELL AS CONSTRUCTION DUST TAPE DURING OPERATIONS, WHENES PERMITTED BY CLASS IORA - CONSTRUCTION BARRIER TO BE PROVIDED AS SPECIFIED AND LISTED IN IORA CLASSIFICATION
3. PROVIDE NEGATIVE PRESSURE MONITORS DURING CONSTRUCTION OPERATIONS AS SPECIFIED. MONITOR TO MEASURE PRESSURE DIFFERENTIAL BETWEEN CONSTRUCTION AREA AND ADJACENT CORRIDOR OR ROOM AS DIRECTED BY VA.
4. AS CONSTRUCTION PROGRESSES FROM TYPE D TO TYPE C AND THEREON, PROVIDE A SMALL CONSTRUCTION BARRIER (CONSTRUCTION BARRIER) TO THE VA CORRIDOR CONTROL NURSE. UPON AUTHORIZATION, PROCEED TO NEXT TYPE OF CONSTRUCTION. PROVIDE AT LEAST TEN (10) WORKING DAYS NOTICE FOR EACH PERMIT.
5. CONSTRUCTIVE (INFECTION CONTROL CONSTRUCTION BARRIERS) FROM FLOOR TO DECK/ROOF ABOVE. EXCEPTION: IF BARRIER IS ADJACENT TO SMOKE, FIRE, OR HAZARDOUS MATERIAL, BARRIER WILL NOT BE REMOVED AND TERMINATES TO FLOOR/CEILING ABOVE, THEN CONSTRUCT DUST PROOF IC BARRIER (SEE DETAILS). TAPE, MUD, SAND JOINTS AND PAINT ON CONSTRUCTION SIDE OF BARRIER.
6. INFECTION CONTROL BARRIERS ARE TO BE INSTALLED AND REMOVED ONLY BY VA CORRIDOR CONTROL NURSE AND AFTER 8:00 PM OR DIRECTED BY CORP. ALL IORA BARRIERS MUST BE INSPECTED BY VA PRIOR TO THE START OF WORK.
7. DURING CONSTRUCTION OPERATIONS IN EACH ENCLOSED AREA PROVIDE NEGATIVE PRESSURE MONITORS, MINIMUM (1) ONE IN AREA LESS THAN 5000 SF, (2) TWO MINIMUM IN AREAS BETWEEN 5000 SF AND 5000 SF, AND (3) THREE FOR AREAS BETWEEN 5000 SF AND 10000 SF.
8. LIFE SAFETY EGRESS IS TO BE MAINTAINED AT ALL TIMES.
9. THE CONTRACTOR MUST PROVIDE ENOUGH NEGATIVE AIR FLOWS TO COMPLETELY EXCHANGE THE REGULATED AREA AIR VOLUME (4) EACH ACTUAL TIMES PER HOUR. THE COMPETENT PERSON MUST DETERMINE THE NUMBER OF FLOWS REQUIRED FOR EACH ACTUAL TIME PER HOUR (4) FLOWS PER HOUR IN THE REGULATED AREA BY (1) FIFTEEN (15) TIMES AND THEN DIVIDING THAT RESULT BY THE ACTUAL CUBIC FEET PER MINUTE (CFM) FOR EACH UNIT TO DETERMINE THE NUMBER OF FLOWS REQUIRED (4) FLOWS PER HOUR CHANGES PER HOUR. PROVIDE A STANDBY UNIT IN THE EVENT OF MACHINE FAILURE AND/OR EMERGENCY IN AN ADJACENT AREA.
10. PRIOR TO ANY REMOVAL OF SMOKE BARRIER FIRE RATED PARTITIONS, CONSTRUCT SMOKE BARRIER/APPROPRIATE FIRE RATED PARTITIONS PER PERMITS. CONSTRUCT INFECTION CONTROL BARRIER TO ACT AS SMOKE BARRIER.

C:\Users\czupan\Documents\17639-A-R23_czupanJAMEX.mt

A

B

C

D

E

F

A

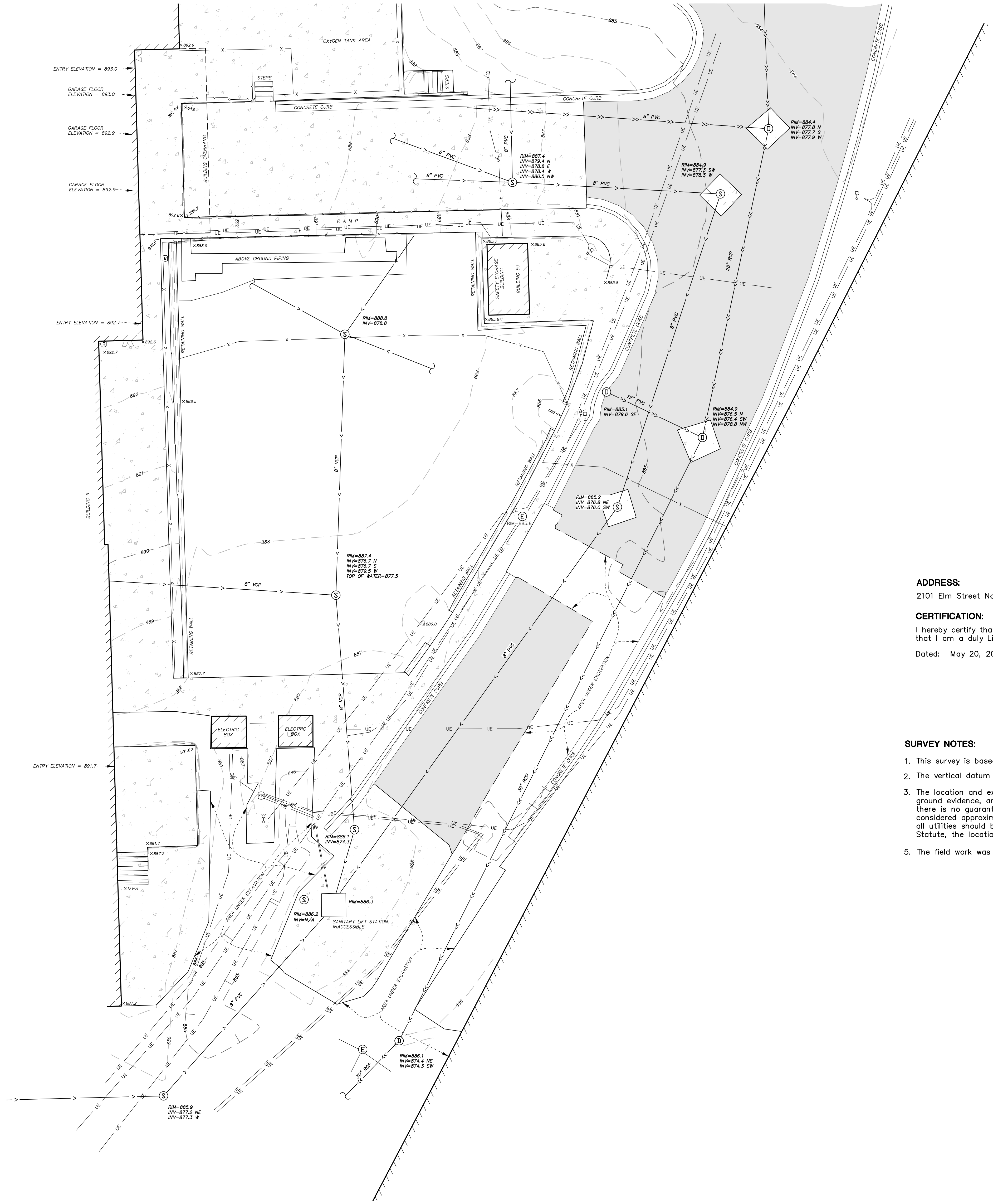
B

C

D

E

F



ADDRESS:
2101 Elm Street Northeast, Fargo, North Dakota, 58102

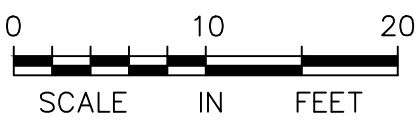
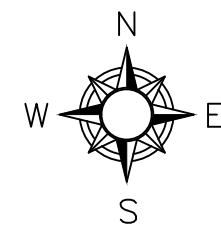
CERTIFICATION:
I hereby certify that this survey was prepared by me or under my direct supervision and that I am a duly Licensed Land Surveyor under the laws of the State of North Dakota.
Dated: May 20, 2024

Anderson Engineering of Minnesota, LLC

by: Nicholas Hillmer
Nicholas Hillmer
North Dakota License No. 6123

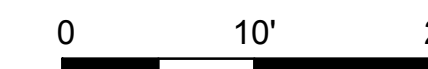
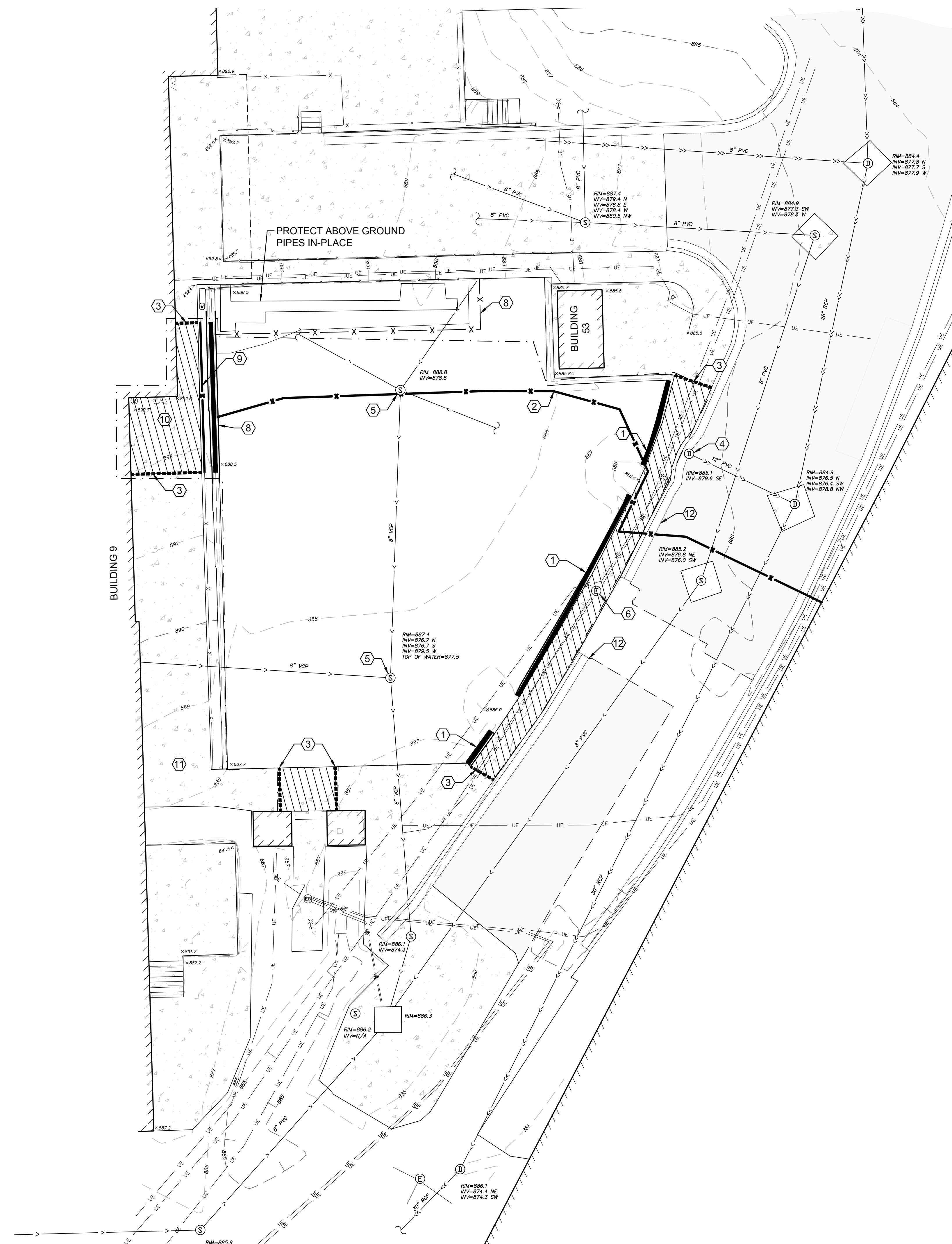
- SURVEY NOTES:**
- This survey is based on the North Dakota State Plane Coordinate System, South Zone, NAD83(2011).
 - The vertical datum is NAVD 88.
 - The location and extent of underground utilities, if shown, are based upon existing drawings provided by the VA, above ground evidence, and underground utility markings by Bloodhound Underground Utility Locators. Exclusive of excavation, there is no guarantee as to the accuracy or the completeness of this information. The size and location should be considered approximate. Additional underground utilities may be present. Verification of the existence and location of all utilities should be obtained from the utility owners prior to any planning or design. In accordance with State Statute, the location of utilities shall be confirmed prior to any demolition or construction.
 - The field work was completed May, 2024.

LEGEND	
	AUTO SPRINKLER
	ELECTRIC BOX
	ELECTRIC MANHOLE
	LIGHT POLE
	ROOF DRAIN
	SANITARY MANHOLE
	STORM MANHOLE
	WATER VALVE
	FENCE
	HANDRAIL
	SANITARY SEWER
	STORM SEWER
	UNDERGROUND ELECTRIC
	BITUMINOUS SURFACE
	CONCRETE SURFACE



BID DOCUMENT SUBMISSION

<div>Revisions:</div> <div>Date:</div>	CONSULTANT	ARCHITECT/ENGINEER OF RECORD	STAMP	Office of Construction and Facilities Management VA U.S. Department of Veterans Affairs	Drawing Title	Phase	Project Title	Project Number
					EXISTING SURVEY	BID DOCUMENTS	PERFORM SITE PREP FOR SPS EQUIPMENT	437-CSI-241
					Approved: Project Director	FULLY SPRINKLED	Location FARGO, ND	Building Number SITE
							Issue Date APRIL 30, 2024	Checked Drawn Drawing Number V-101



LEGEND

- | | |
|--|-----------------------------------|
| | PROPERTY LIMITS |
| | CONSTRUCTION LIMITS |
| | EXISTING WATERMAIN |
| | EXISTING SANITARY SEWER |
| | EXISTING STORM SEWER |
| | EXISTING FENCE |
| | EXISTING GAS MAIN |
| | EXISTING OVERHEAD WIRES |
| | EXISTING TELEPHONE |
| | EXISTING UNDERGROUND
ELECTRIC |
| | EXISTING ELECTRIC MANHOLE |
| | EXISTING HYDRANT AND GV |
| | EXISTING SANITARY MANHOLE |
| | EXISTING STORM SEWER INLET |
| | REMOVE EXISTING CONCRETE
WALK |
| | REMOVE EXISTING RETAINING
WALL |
| | FULL DEPTH SAW CUT |
| | REMOVE EXISTING FENCE |

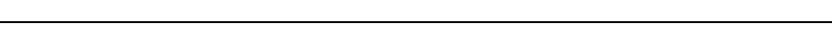
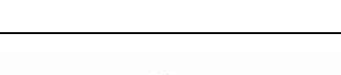
KEY NOTES

- ① REMOVE AND SALVAGE EXISTING RETAINING WALL.
- ② TEMPORARY CONSTRUCTION FENCE IN-PLACE AT TIME OF SURVEY. REMOVE IF STILL IN-PLACE.
- ③ FULL DEPTH SAW CUT TO NEAREST JOINT.
- ④ PROTECT EXISTING STORMWATER STRUCTURE IN-PLACE.
- ⑤ ADJUST RIM OF SANITARY MANHOLE TO PROPOSED FINISHED GRADE ELEVATION.
- ⑥ PROTECT EXISTING ELECTRIC MANHOLE IN-PLACE.
- ⑦ PROPOSED FENCE TO PROTECT ABOVE GROUND PIPING.
- ⑧ REMOVE AND SALVAGE EXISTING RETAINING WALL AS NECESSARY TO ACCOMMODATE COVERED WALKWAY. SECTION TO BE RESTORED AFTER TRAILER REMOVAL.
- ⑨ REMOVE EXISTING CHAIN LINK FENCE AT TOP OF RETAINING WALL TO ACCOMMODATE COVERED WALKWAY. REPLACE IN-KIND AFTER TRAILER REMOVAL.
- ⑩ REMOVE CONCRETE WALK AND STOOP FOUNDATION TO ACCOMMODATE CONCRETE PAD.
- ⑪ CONSTRUCTION SAFETY SIGNAGE. SEE DETAIL 7/C-101. CONTRACTOR TO VERIFY LOCATION IN FIELD.
- ⑫ REMOVE AND REPLACE CURB AND GUTTER AS NECESSARY TO COMPLETE WORK.

GENERAL NOTES

1. SITE UNDER CONSTRUCTION AT TIME OF SURVEY. CONTRACTOR SHALL VERIFY EXISTING CONDITIONS PRIOR TO START OF CONSTRUCTION. CONTRACTOR SHALL NOTIFY PM AND ENGINEER OF ANY DISCREPANCIES BETWEEN EXISTING CONDITIONS AND PLANS. SEE ARCHITECTURE PLANS FOR ADDITIONAL DEMO.
2. ELEVATIONS, LOCATIONS, AND EXTENTS OF UTILITIES SHOWN ON PLANS ARE DEVELOPED FROM AS-BUILT DRAWINGS PROVIDED BY THE VA AND THIRD-PARTY UTILITY LOCATE. PROVIDED INFORMATION AND SHOULD BE CONFIRMED APPROXIMATE. CONTRACTOR IS RESPONSIBLE FOR FIELD VERIFYING UNDERGROUND UTILITIES PRIOR TO START OF WORK.
3. CONTRACTOR IS RESPONSIBLE FOR MEANS AND METHODS TO PROTECT UTILITIES FROM DAMAGE DURING EXTERIOR ACTIVITIES AND CONSIDERING THE EXISTING CONDITIONS. SEE SHEET CS101 FOR CAMPUS LAYOUT AND CONTRACTOR STAGING AREA.

BID DOCUMENT SUBMISSION

		CONSULTANT	ARCHITECT/ENGINEER OF RECORD	STAMP	Office of Construction and Facilities Management	Drawing Title DEMOLITION PLAN	Phase BID DOCUMENTS	Project Title PERFORM SITE PREP FOR SPS EQUIPMENT	Project Number 437-CSI-241
						Approved: Project Director		Location FARGO, ND	Building Number SITE
			13605 1st Ave. N. #100 Plymouth, MN 55441 P 763.412.4000 F 763.412.4090 ae-mn.com Anderson Engineering of NC, PLLC Proj # 16054 Erm License No. 5-2760		VA U.S. Department of Veterans Affairs		FULLY SPRINKLED	Issue Date 1/22/2025	CD101
		Revisions:						Checked EMS	Drawn KEA
		Date:							

A

B

C

D

E

F

File Path: y:\760017638\va-mc-site-prep-sps-equipment\argo.nd\07_civil_01\sheet17638_grading.dwg | saved: 1/21/2025 12:54 PM | plot: 1/21/2025 1:30 PM

N

0

10'

20'

LEGEND

PROPERTY LIMITS

CONSTRUCTION LIMITS

EXISTING MINOR CONTOUR

EXISTING MAJOR CONTOUR

PROPOSED MINOR CONTOUR

PROPOSED MAJOR CONTOUR

DRAINAGE ARROW

SILT FENCE

INLET SEDIMENT PROTECTION

SPOT ELEVATION OF CONCRETE PAD

FLOW LINE OF CURB

HIGH/LOW POINT

RIM ELEVATION

TOP OF CURB

TOP/BOTTOM OF WALL

EXISTING WATERMAIN

EXISTING SANITARY SEWER

EXISTING STORM SEWER

PROPOSED WATERMAIN

PROPOSED SANITARY SEWER

PROPOSED STORM SEWER

PROPOSED WATERMAIN FITTING

PROPOSED SANITARY MANHOLE AND CLEANOUT

PROPOSED STORM INLETS

EROSION CONTROL BIO-ROLL

KEY NOTES

1

CORE DRILL INTO EXISTING SANITARY MANHOLE TO CONNECT SANITARY SERVICE LINE FROM TEMPORARY SPS TRAILER.

2

SEE SHEET C-101 FOR SANITARY PIPE CONNECTION.

3

UNDERGROUND ELECTRIC LINE TO REMAIN AFTER TRAILER REMOVAL.

4

ELECTRICAL COMPONENTS TO BE REMOVED AFTER TRAILER REMOVAL.

GENERAL NOTES

1.

SITE CURRENTLY UNDER CONSTRUCTION AT TIME OF SURVEY. CONTRACTOR SHALL VERIFY ELEVATION OF EXISTING CURB AND GUTTER PRIOR TO STARTING WORK. CONTRACTOR SHALL NOTIFY VA PM AND ENGINEER OF RECORD OF ANY ELEVATION DISCREPANCIES.

2.

SITE PREP AND GRADING TO BE COMPLETED PRIOR TO TRAILER DELIVERY. CONTRACTOR TO COORDINATE WITH TRAILER MANUFACTURER ON ACCEPTABLE SITE CONDITIONS.

3.

ALL UTILITIES EXCEPT SANITARY WILL BE PROVIDED BY BUILDING 1. SEE MECHANICAL, ELECTRICAL, AND PLUMBING DRAWINGS.

4.

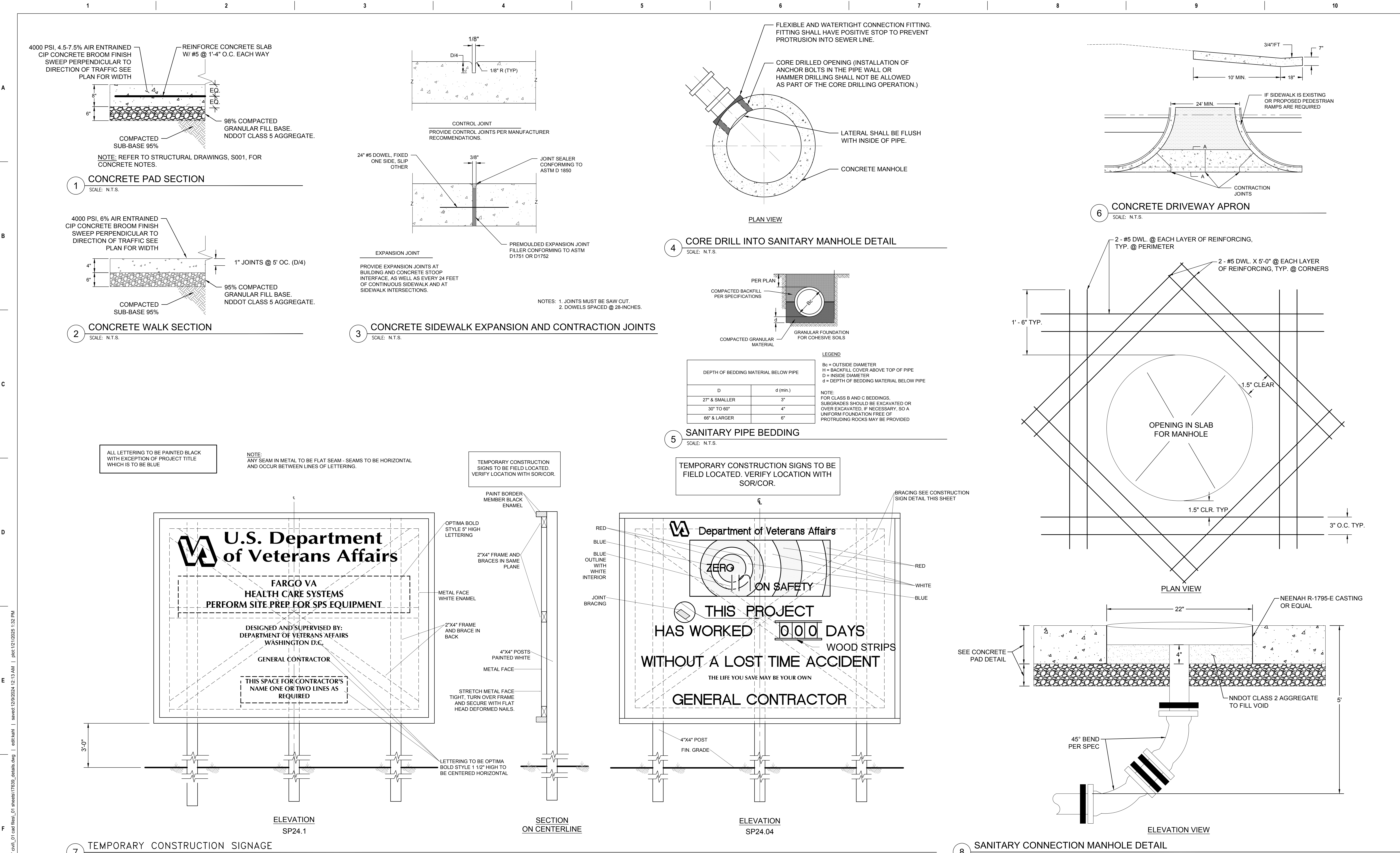
SPOT ELEVATIONS SHOWN FOR CONCRETE PAD BELOW ELEVATED WALKWAY BUILDING CONNECTION.

1 CG101 SPS TEMPORARY TRAILER GRADING PLAN

		CONSULTANT	ARCHITECT/ENGINEER OF RECORD	STAMP	Office of Construction and Facilities Management	Drawing Title GRADING, UTILITY & EROSION CONTROL PLAN	Phase BID DOCUMENTS	Project Title PERFORM SITE PREP FOR SPS EQUIPMENT	Project Number 437-CSI-241
Revisions:									
Date:			ANDERSON	LEE KOPPEY REGISTERED PROFESSIONAL ENGINEER PE#207 1-22-2025 NORTH DAKOTA	U.S. Department of Veterans Affairs	Approved: Project Director	FULLY SPRINKLED	Location FARGO, ND	Building Number SITE
			13605 1st Ave. N. #100 Plymouth, MN 55441 P 763.412.4000 F 763.412.4090 ae-mn.com Anderson Engineering of NC, PLLC Proj # 16054 Firm License No. E-2260					Issue Date 1/22/2025	Checked EMS
								Drawn KEA	Drawing Number CG101

BID DOCUMENT SUBMISSION

VA FORM 08 - 6231 1 2 3 4 5 6 7 8 9 10



BID DOCUMENT SUBMISSION

Revisions:	Date:	CONSULTANT	ARCHITECT/ENGINEER OF RECORD	STAMP	Office of Construction and Facilities Management	Drawing Title SITE DETAILS	Phase BID DOCUMENTS	Project Title PERFORM SITE PREP FOR SPS EQUIPMENT	Project Number 437-CSI-241
						Approved: Project Director			Building Number SITE
								FULLY SPRINKLED	Location FARGO, ND
									Issue Date 1/22/2025
							Checked EMS	Drawn KEA	Drawing Number C-101

VA FORM 08 - 6231

1

2

3

4

5

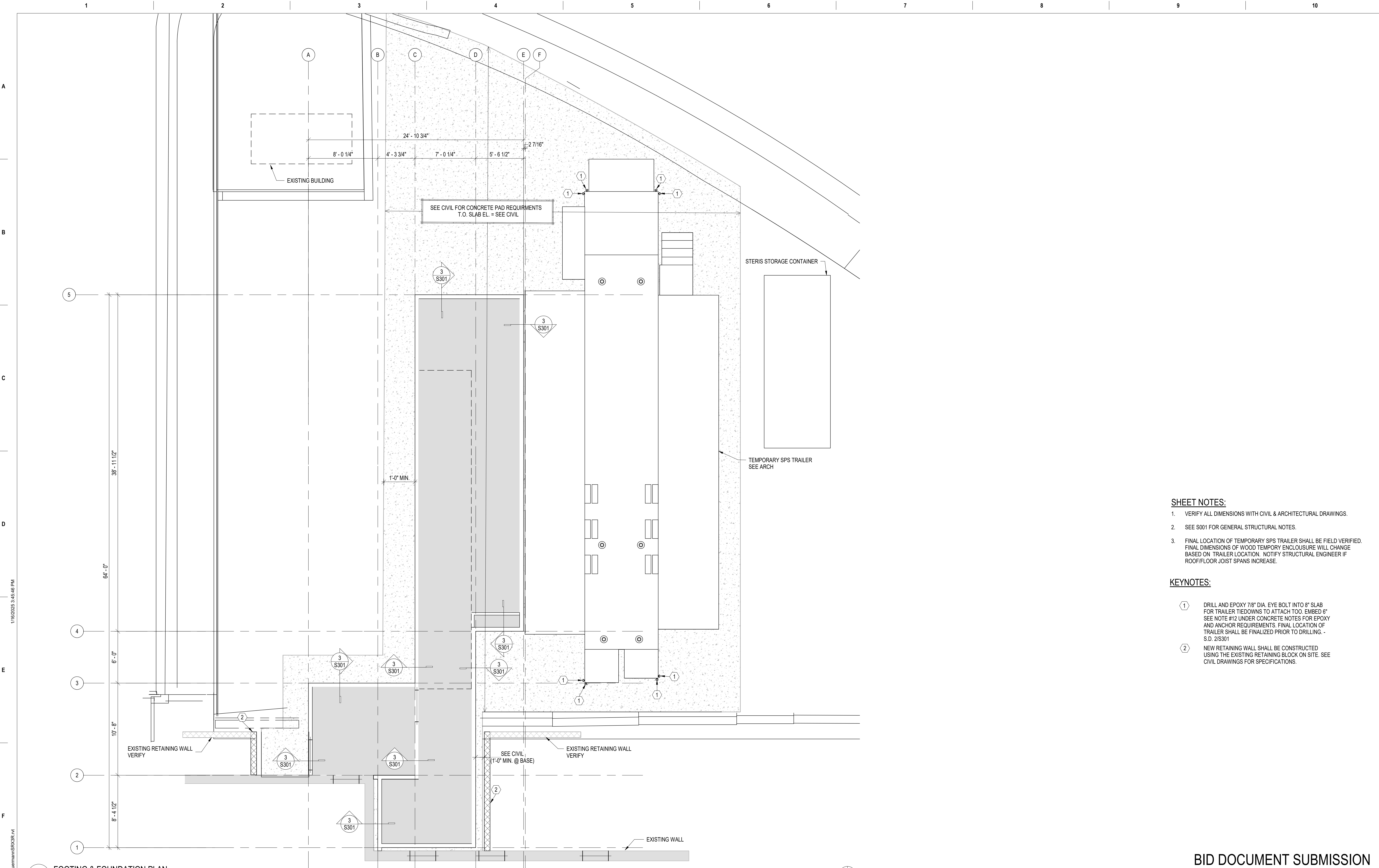
6

7

8

9

10



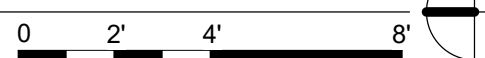
SHEET NOTES:

1. VERIFY ALL DIMENSIONS WITH CIVIL & ARCHITECTURAL DRAWINGS.
2. SEE S001 FOR GENERAL STRUCTURAL NOTES.
3. FINAL LOCATION OF TEMPORARY SPS TRAILER SHALL BE FIELD VERIFIED. FINAL DIMENSIONS OF WOOD TEMPORY ENCLOSURE WILL CHANGE BASED ON TRAILER LOCATION. NOTIFY STRUCTURE ENGINEER IF ROOF/FLOOR JOIST SPANS INCREASE.



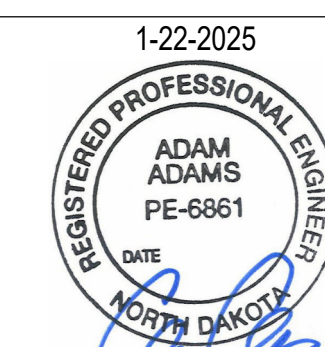

KEYNOTES:

1. DRILL AND EPOXY 7/8" DIA. EYE BOLT INTO 8" SLAB FOR TRAILER TIEDOWNS TO ATTACH TOO. EMBED 6" SEE NOTE #12 UNDER CONCRETE NOTES FOR EPOXY AND ANCHOR REQUIREMENTS. FINAL LOCATION OF TRAILER SHALL BE FINALIZED PRIOR TO DRILLING. - S.D. 2/5/301
2. NEW RETAINING WALL SHALL BE CONSTRUCTED USING THE EXISTING RETAINING BLOCK ON SITE. SEE CIVIL DRAWINGS FOR SPECIFICATIONS.

1 FOOTING & FOUNDATION PLAN
1/4" = 1'-0" T.O. SLAB EL. = SEE CIVIL



C:\Users\Bjerrum\Documents\17639_S_RVT23_Bjerrum\SPX26.rvt 1/16/2025 3:45:46 PM

		<div>CONSULTANT</div> <div></div> <div>2882 106TH STREET DES MOINES IA 50322</div>		<div>DESIGNER OF RECORD</div> <div></div> <div>13605 1st Ave. N. #100 Plymouth, MN 55441 P 763.412.4000 F 763.412.4090 ae-mn.com Anderson Engineering of Minnesota, LLC Proj # 437-CSI-241</div>		<div>STAMP</div> <div></div>		<div>Office of Construction and Facilities Management</div> <div> U.S. Department of Veterans Affairs</div>		<div>Drawing Title</div> <div>FOOTING & FOUNDATION PLAN</div> <div>Approved:</div>		<div>Phase</div> <div>BID DOCUMENTS</div> <div>FULLY SPRINKLERED</div>		<div>Project Title</div> <div>PERFORM SITE PREP FOR SPS EQUIPMENT</div> <div>Location</div> <div>FARGO, ND</div> <div>Issue Date</div> <div>1/22/2025</div> <div>Checked</div> <div>EW</div> <div>Drawn</div> <div>JB</div>			<div>Project Number</div> <div>437-CSI-241</div> <div>Building Number</div> <div>9</div> <div>Drawing Number</div> <div>S101</div>	
--	--	---	--	--	--	---	--	--	--	--	--	--	--	---	--	--	--	--

BID DOCUMENT SUBMISSION