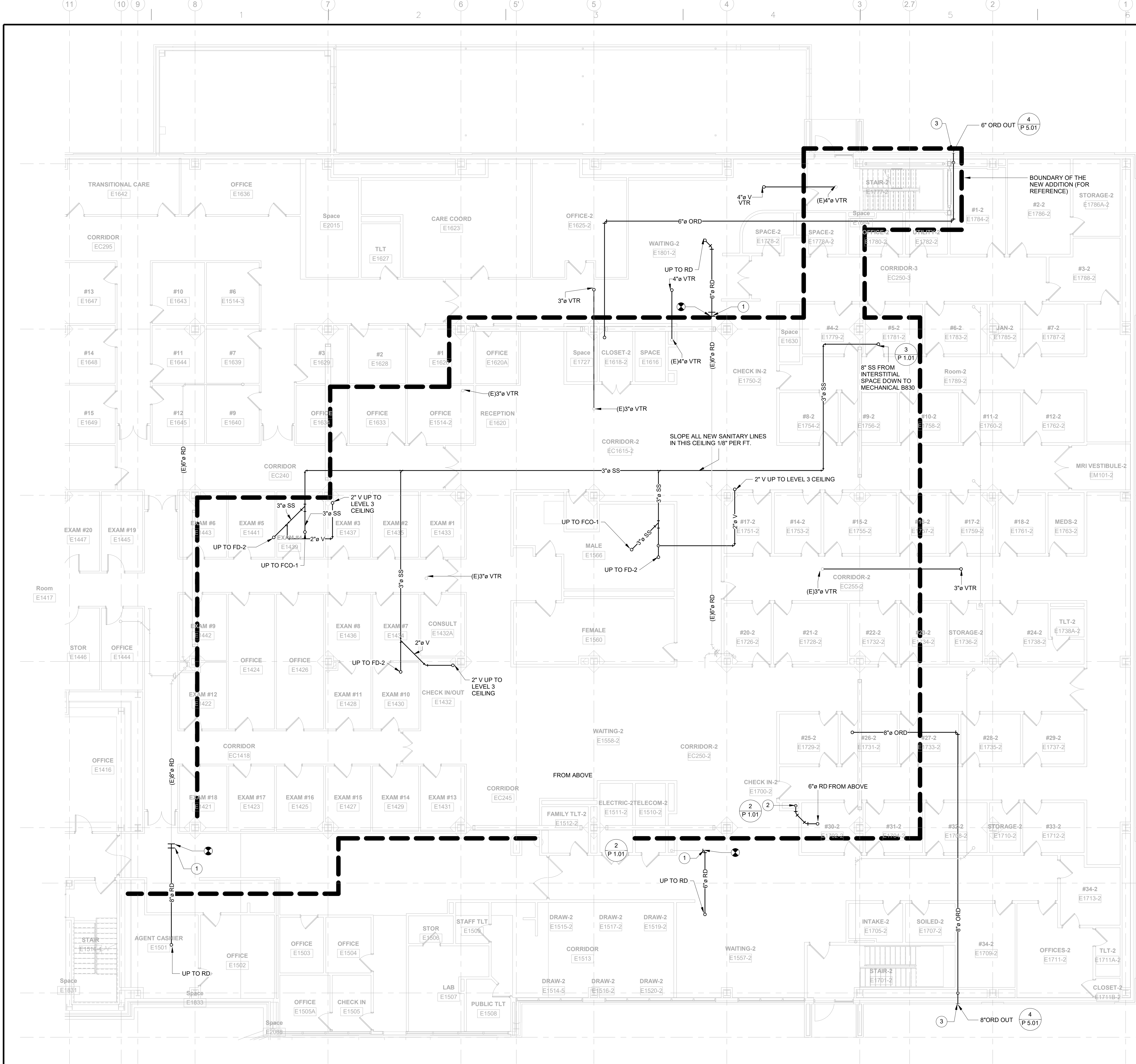
[illegible]

2/23/2024 10:48:25 AM

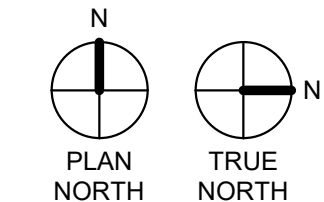
one eighth inch = one foot
one quarter inch = one foot
three eighths inch = one foot
one half inch = one foot
three quarters inch = one foot
one and one half inches = one foot
one and one half inches = one foot

one eighth inch = one foot
one quarter inch = one foot
three eighths inch = one foot
one half inch = one foot
three quarters inch = one foot
one and one half inches = one foot
one and one half inches = one foot

one eighth inch = one foot
one quarter inch = one foot
three eighths inch = one foot
one half inch = one foot
three quarters inch = one foot
one and one half inches = one foot
one and one half inches = one foot



1 LEVEL 1 DRAIN, WASTE AND VENT
P 1.01 1/8" = 1'-0"

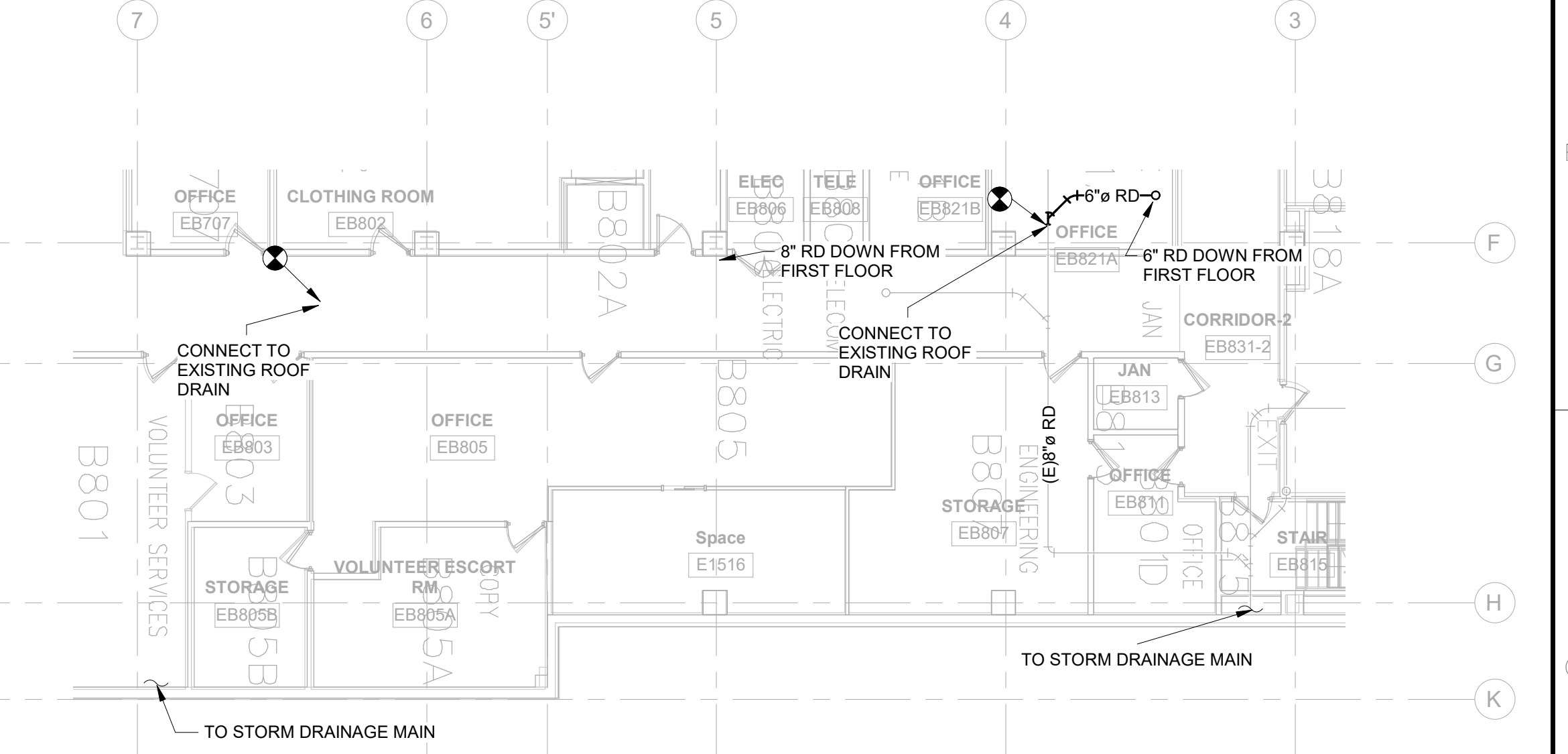


GENERAL NOTES:

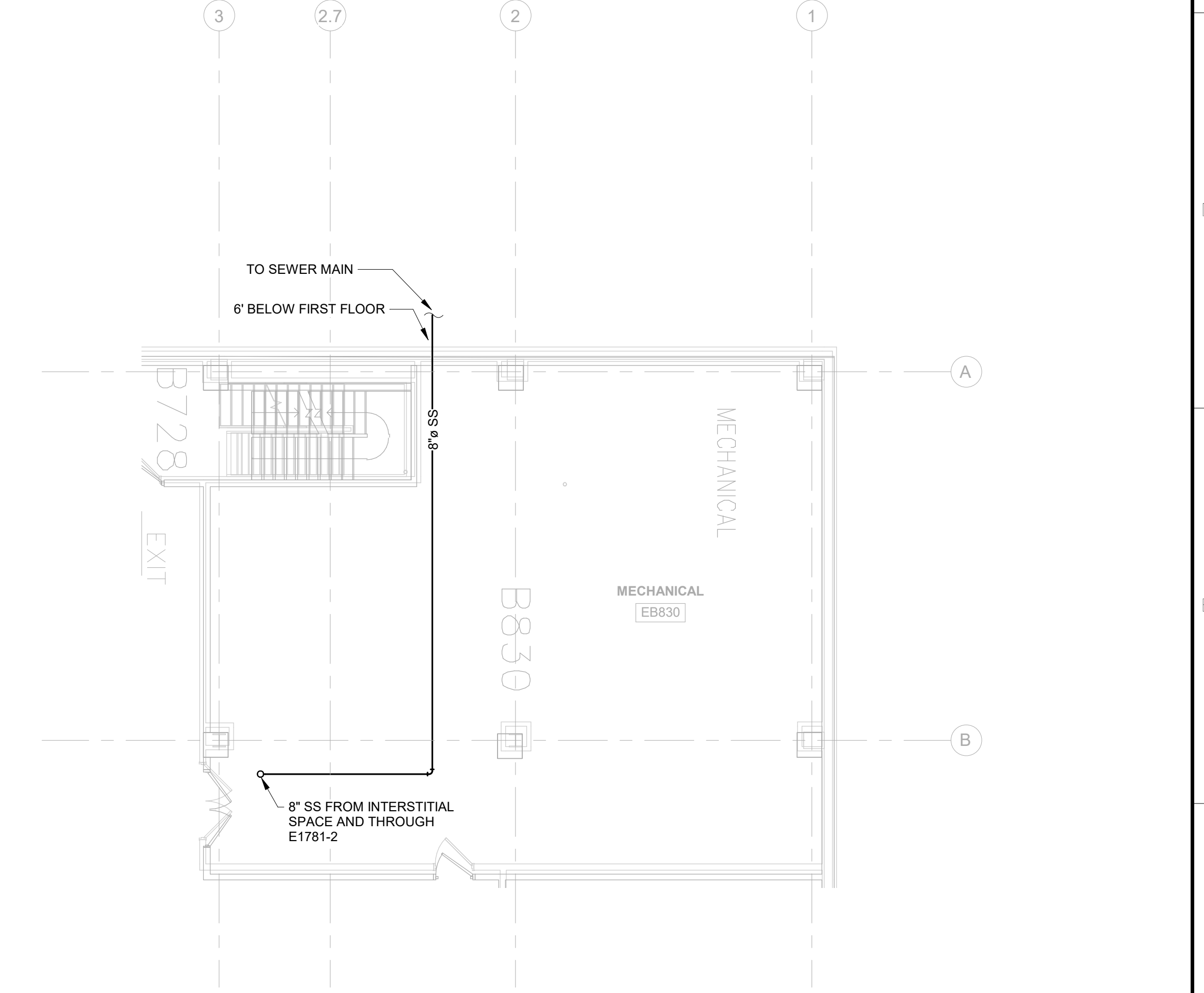
- CONTRACTOR WILL BE REQUIRED TO COREDRILL HOLES AND CREATE NEW PENETRATIONS IN EXISTING CONCRETE THROUGHOUT THIS PROJECT. SOME INSTANCES OF COREDRILLING ARE SHOWN ON PLANS, WHILE MOST ARE NOT. CONTRACTOR TO PROVIDE NEW HOLES FOR NEW PLUMBING AND ALSO CREATE RATED FIRE SEALED ASSEMBLY ONCE PIPE IS INSTALLED AT EVERY PENETRATION (WALL OR FLOOR) LOCATION.
- NEW PIPE ROUTING SHOWN IS DIAGRAMMATIC AND HAS NOT BEEN TESTED TO VERIFY THAT NEW PIPING DOES NOT CONFLICT WITH EXISTING CONDITIONS AROUND THE NEW ROUTE SHOWN. CONTRACTOR TO COORDINATE AND PROVIDE OFFSETS TO ALLOW NEW PIPING TO BE INSTALLED IN EXISTING CEILING AS REQUIRED TO COMPLETE THE INTENDED ROUTING. IF CONFLICT ARISES THAT DOES NOT ALLOW FOR OFFSET AND REROUTING, CONTRACTOR TO NOTIFY ENGINEER OF DISCREPANCY.
- NEW PIPING SHOWN IN FOR THIS PROJECT IS SHOWN OVER EXISTING FLOORPLAN (AT THE TIME OF DESIGN). CONTRACTOR TO PROVIDE SERVICES FOR THIS PROJECT AS IF THE EXISTING SPACE SHOWN IS LIVE SPACE AND A COORDINATED AND PHASED REMODEL APPROACH SHALL BE REQUIRED BY THE CONTRACTOR.

KEY NOTES:

- RECONNECT TO EXISTING STORM DRAIN PIPING AT THIS LOCATION AND EXTEND NEW PIPING TO NEW ROOF DRAIN LOCATION.
- INSTALL NEW STORM DRAIN DOWN EXISTING CHASE. GC TO PROVIDE ACCESS TO CHASE AND PATCH BACK AFTER NEW DRAIN IS INSTALLED.
- ADD HEAT TRACE INSIDE ORD PIPING AT THE TERMINALS.






2 LEVEL 0 ROOF DRAINAGE
P 1.01 3/32" = 1'-0"



3 LEVEL 0 SANITARY STUBOUT
P 1.01 1/8" = 1'-0"

CONSTRUCTION DOCUMENTS

CONSULTANTS:  TERRASITE DESIGN 1635 DEADWOOD AVENUE RAPID CITY, SOUTH DAKOTA 57702 PH: (605) 791-1736  ALBERTSON ENGINEERING, INC. 3202 WEST MAIN STREET, SUITE C RAPID CITY, SOUTH DAKOTA 57702 PH: (605) 343-9606  FARRIS ENGINEERING 12700 WEST DODGE ROAD OMAHA, NEBRASKA 68154 PH: (402) 330-5900		ARCHITECT:  FOURFRONT DESIGN, INC. 517 7TH STREET RAPID CITY, SOUTH DAKOTA 57701 PH: (605) 342-9470 FAX: (605) 342-2377 WWW.FOURFRONTDESIGN.COM		Drawing Title: FIRST FLOOR DRAIN, WASTE AND VENT PLAN Approved: Project Director Omaha VA Medical Center 16.2330.A08		Project Title: VA NWIHCS OMC CAMPUS - AE Construct Sterile Processing Service Location: 4101 Woolworth Ave #4199 Omaha, Ne 68105 Date: 11 / 23 / 2020 Checked: RD Drawn: BM		Project Number: 16.2330.A08 Building Number: 25 Drawing Number: P 1.01 Dwg. 146 of 193		Office of Construction and Facilities Management  Department of Veterans Affairs	
--	--	---	--	--	--	---	--	--	--	---	--

2/23/2024 10:43:36 AM

one eighth inch = one foot

one quarter inch = one foot

three eighths inch = one foot

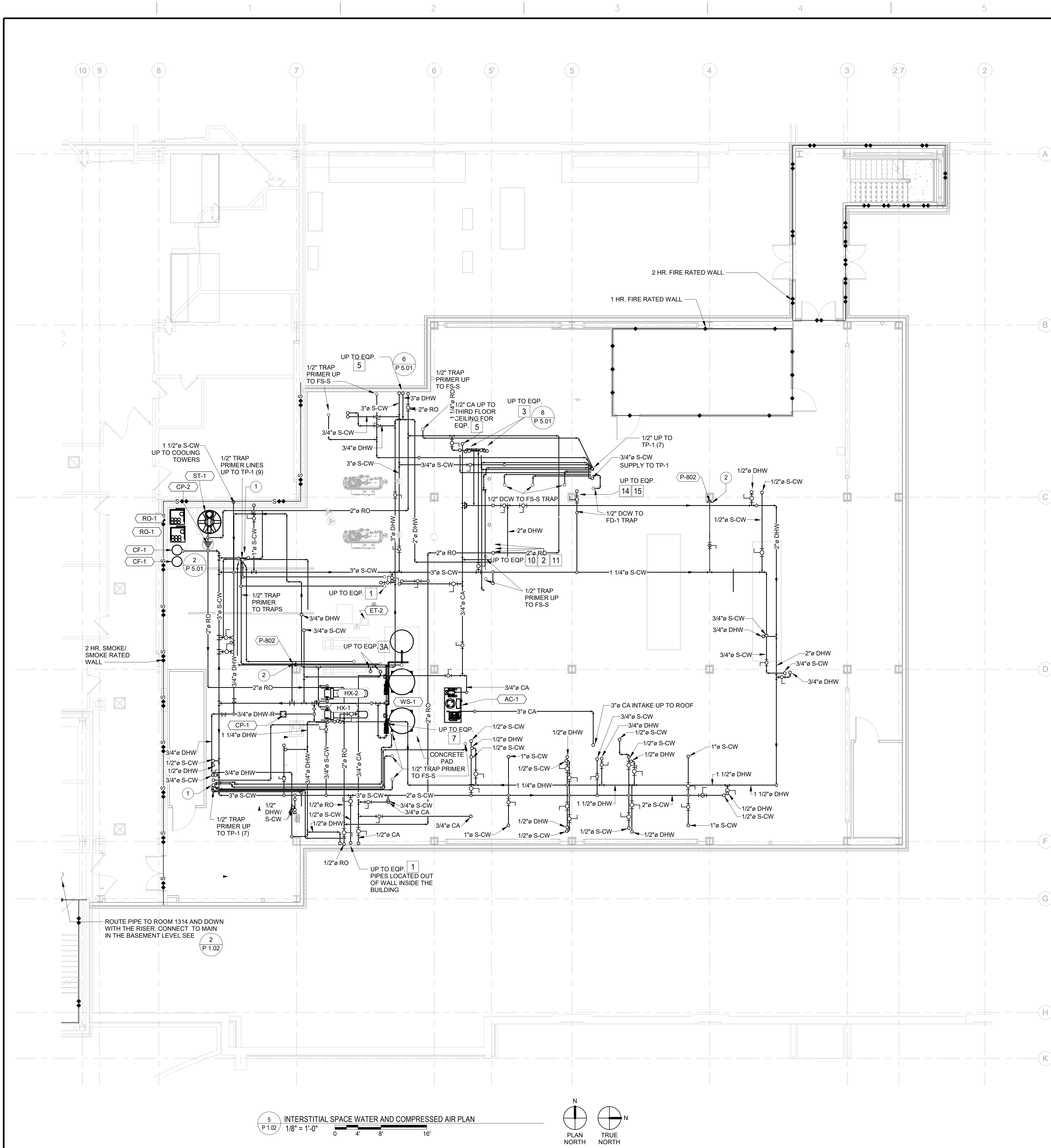
one half inch = one foot

three quarters inch = one foot

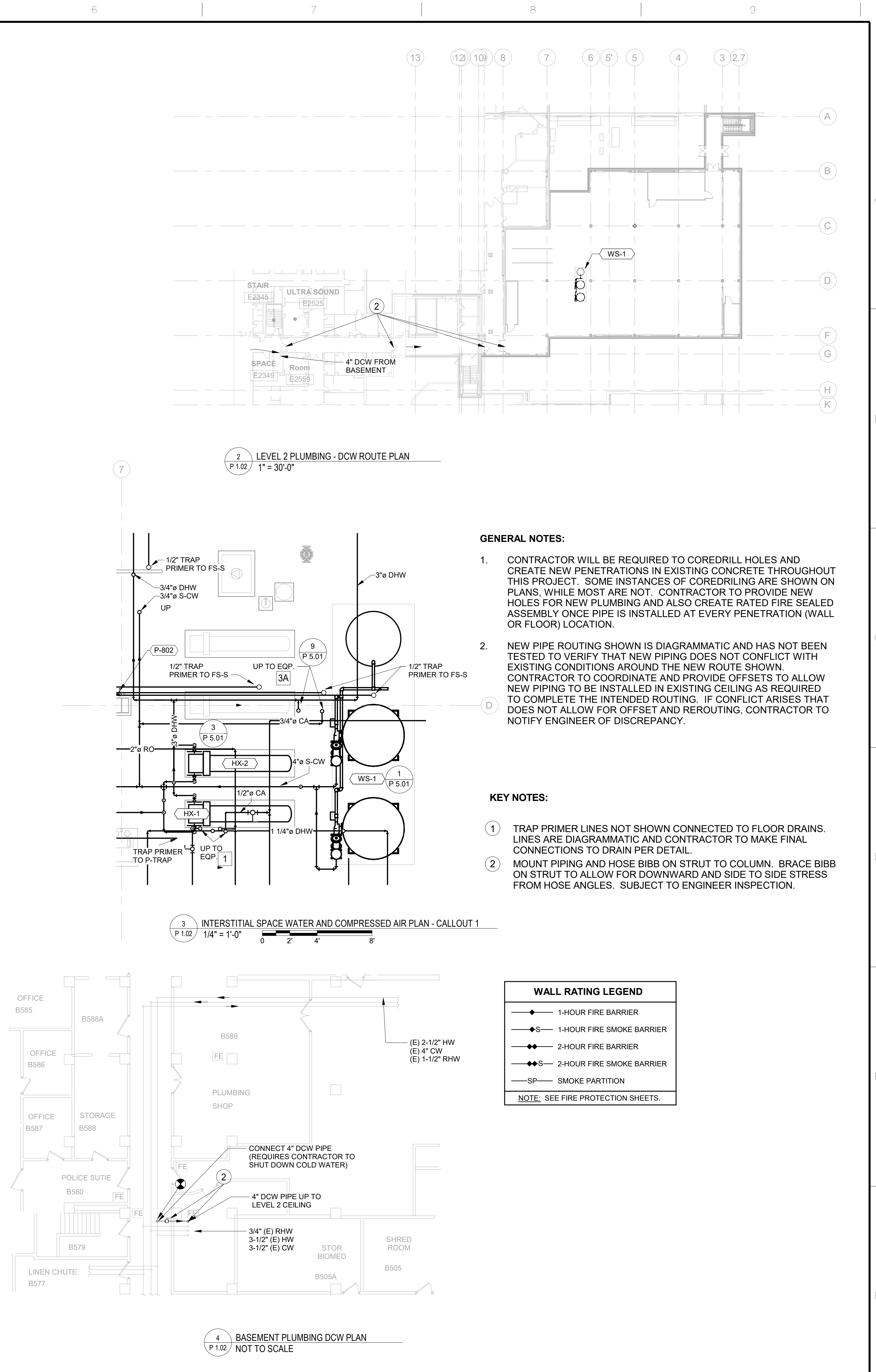
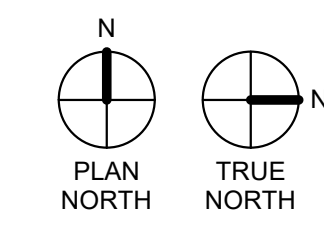
one and one half inches = one foot

one and one half inches = one foot

one and one half inches = one foot



5 INTERSTITIAL SPACE WATER AND COMPRESSED AIR PLAN
P 1.02
1/8" = 1'-0"




2 LEVEL 2 PLUMBING - DCW ROUTE PLAN
P 1.02
1" = 30'-0"

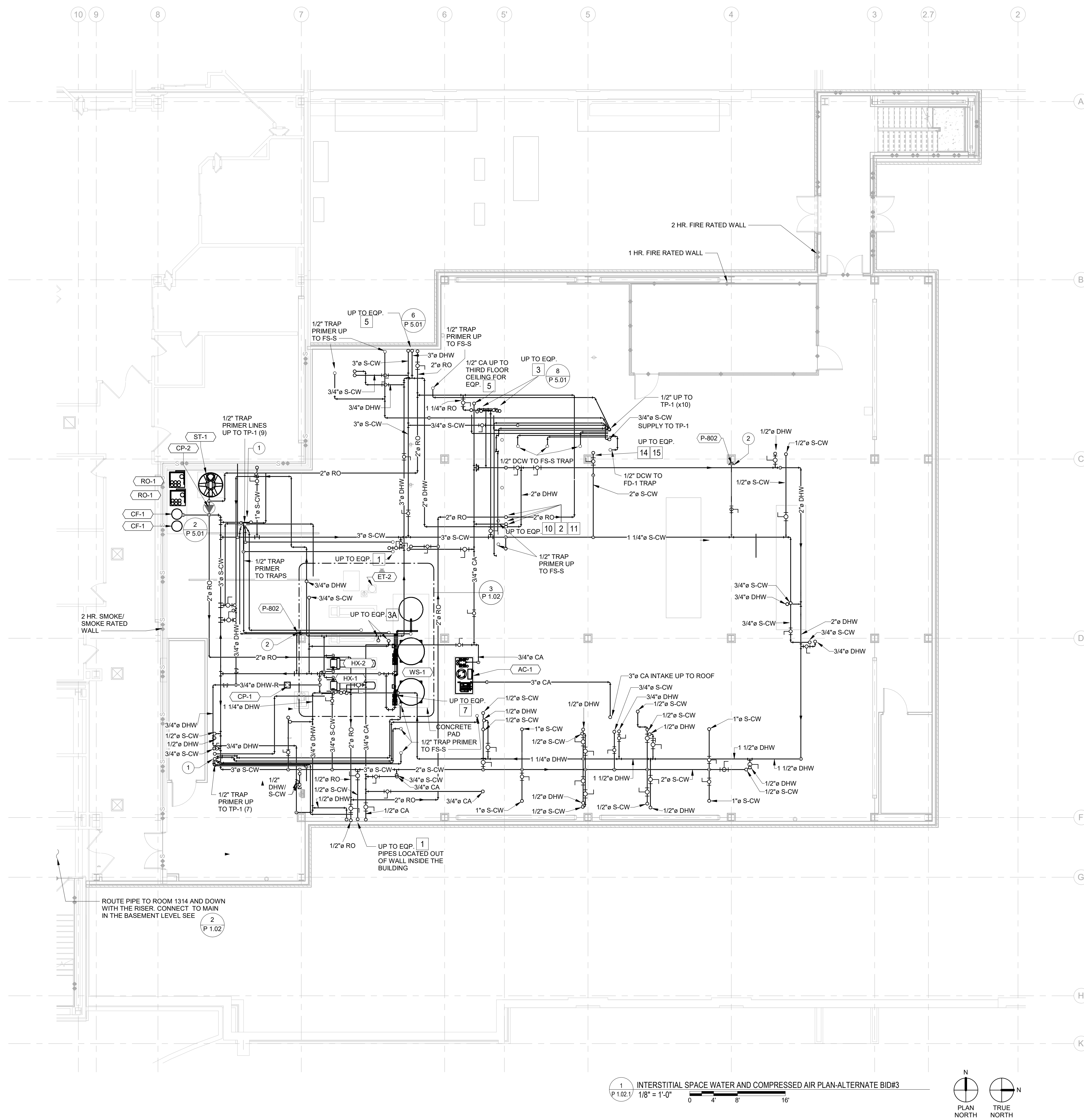
3 INTERSTITIAL SPACE WATER AND COMPRESSED AIR PLAN - CALLOUT 1
P 1.02
1/4" = 1'-0"

4 BASEMENT PLUMBING DCW PLAN
P 1.02
NOT TO SCALE

- GENERAL NOTES:**
- CONTRACTOR WILL BE REQUIRED TO COREDRILL HOLES AND CREATE NEW PENETRATIONS IN EXISTING CONCRETE THROUGHOUT THIS PROJECT. SOME INSTANCES OF COREDRILLING ARE SHOWN ON PLANS, WHILE MOST ARE NOT. CONTRACTOR TO PROVIDE NEW HOLES FOR NEW PLUMBING AND ALSO CREATE RATED FIRE SEALED ASSEMBLY ONCE PIPE IS INSTALLED AT EVERY PENETRATION (WALL OR FLOOR) LOCATION.
 - NEW PIPE ROUTING SHOWN IS DIAGRAMMATIC AND HAS NOT BEEN TESTED TO VERIFY THAT NEW PIPING DOES NOT CONFLICT WITH EXISTING CONDITIONS AROUND THE NEW ROUTE SHOWN. CONTRACTOR TO COORDINATE AND PROVIDE OFFSETS TO ALLOW NEW PIPING TO BE INSTALLED IN EXISTING CEILING AS REQUIRED TO COMPLETE THE INTENDED ROUTING. IF CONFLICT ARISES THAT DOES NOT ALLOW FOR OFFSET AND REROUTING, CONTRACTOR TO NOTIFY ENGINEER OF DISCREPANCY.
- KEY NOTES:**
- TRAP PRIMER LINES NOT SHOWN CONNECTED TO FLOOR DRAINS. LINES ARE DIAGRAMMATIC AND CONTRACTOR TO MAKE FINAL CONNECTIONS TO DRAIN PER DETAIL.
 - MOUNT PIPING AND HOSE BIBB ON STRUT TO COLUMN. BRACE BIBB ON STRUT TO ALLOW FOR DOWNWARD AND SIDE TO SIDE STRESS FROM HOSE ANGLES. SUBJECT TO ENGINEER INSPECTION.

WALL RATING LEGEND	
◆	1-HOUR FIRE BARRIER
◆S	1-HOUR FIRE SMOKE BARRIER
◆◆	2-HOUR FIRE BARRIER
◆◆S	2-HOUR FIRE SMOKE BARRIER
—SP—	SMOKE PARTITION
NOTE: SEE FIRE PROTECTION SHEETS.	

				<div>CONSULTANTS:</div> <div><div><div>TERRASITE DESIGN 1635 DEADWOOD AVENUE RAPID CITY, SOUTH DAKOTA 57702 PH: (605) 791-1736</div></div><div><div>ALBERTSON ENGINEERING, INC. 3202 WEST MAIN STREET, SUITE C RAPID CITY, SOUTH DAKOTA 57702 PH: (605) 343-9606</div></div><div><div>FARRIS ENGINEERING 12700 WEST DODGE ROAD OMAHA, NEBRASKA 68154 PH: (402) 330-5900</div></div></div>		<div>ARCHITECT</div> <div><div><div>FOURFRONT DESIGN, INC. 517 7TH STREET RAPID CITY, SOUTH DAKOTA 57701 PH: (605) 342-9470 FAX: (605) 342-2377 WWW.FOURFRONTDESIGN.COM</div></div><div></div></div>		<div>Drawing Title</div> <div>INTERSTITIAL SPACE WATER AND COMPRESSED AIR PLAN</div> <div>Approved: Project Director</div> <div>Omaha VA Medical Center</div> <div>16.2330.A08</div>		<div>Project Title</div> <div>VA NWIHCS OMC CAMPUS - AE Construct Sterile Processing Service</div> <div>Location 4101 Woolworth Ave #4199 Omaha, Ne 68105</div> <div><div>Date 11 / 23 / 2020</div><div>Checked RD</div><div>Drawn BM</div></div>		<div>Project Number</div> <div>16.2330.A08</div> <div>Building Number 25</div> <div>Drawing Number P 1.02</div> <div>Dwg. 147 of 193</div>		<div>Office of Construction and Facilities Management</div> <div>Department of Veterans Affairs</div>	
<div>COMPLIANCE REVIEW INCLUDED</div> <div>Revisions:</div>		<div>2/23/2024</div> <div>Date</div>													



- GENERAL NOTES:**

1. CONTRACTOR WILL BE REQUIRED TO COREDRILL HOLES AND CREATE NEW PENETRATIONS IN EXISTING CONCRETE THROUGHOUT THIS PROJECT. SOME INSTANCES OF COREDRILLING ARE SHOWN ON PLANS, WHILE MOST ARE NOT. CONTRACTOR TO PROVIDE NEW HOLES FOR NEW PLUMBING AND ALSO CREATE RATED FIRE SEALED ASSEMBLY ONCE PIPE IS INSTALLED AT EVERY PENETRATION (WALL OR FLOOR) LOCATION.
2. NEW PIPE ROUTING SHOWN IS DIAGRAMMATIC AND HAS NOT BEEN TESTED TO VERIFY THAT NEW PIPING DOES NOT CONFLICT WITH EXISTING CONDITIONS AROUND THE NEW ROUTE SHOWN. CONTRACTOR TO COORDINATE AND PROVIDE OFFSETS TO ALLOW NEW PIPING TO BE INSTALLED IN EXISTING CEILING AS REQUIRED TO COMPLETE THE EXTENDED ROUTING. IF CONFLICT ARISES THAT DOES NOT ALLOW FOR OFFSET AND REROUTING, CONTRACTOR TO NOTIFY ENGINEER OF DISCREPANCY.

2. NEW PIPE ROUTING SHOWN IS DIAGRAMMATIC AND HAS NOT BEEN TESTED. VERIFY THAT NEW PIPING DOES NOT CONFLICT WITH EXISTING CONDITIONS AROUND THE NEW ROUTE SHOWN. CONTRACTOR TO COORDINATE AND PROVIDE OFFSETS TO ALLOW NEW PIPING TO BE INSTALLED IN EXISTING CEILING AS REQUIRED TO COMPLETE THE INTENDED ROUTING. IF CONFLICT ARISES THAT DOES NOT ALLOW FOR OFFSET AND REROUTING, CONTRACTOR TO NOTIFY ENGINEER OF DISCREPANCY.

- KEY NOTES:**

- ① TRAP PRIMER LINES NOT SHOWN CONNECTED TO FLOOR DRAINS. LINES ARE DIAGRAMMATIC AND CONTRACTOR TO MAKE FINAL CONNECTIONS TO DRAIN PER DETAIL.
- ② MOUNT PIPING AND HOSE BIBB ON STRUT TO COLUMN. BRACE BIBB ON STRUT TO ALLOW FOR DOWNWARD AND SIDE TO SIDE STRESS FROM HOSE ANGLES. SUBJECT TO ENGINEER INSPECTION.

- ② MOUNT PIPING AND HOSE BIBB ON STRUT TO COLUMN. BRACE BIBB ON STRUT TO ALLOW FOR DOWNWARD AND SIDE TO SIDE STRESS FROM HOSE ANGLES. SUBJECT TO ENGINEER INSPECTION.

WALL RATING LEGEND	
—◆—	1-HOUR FIRE BARRIER
—◆S	1-HOUR FIRE SMOKE BARRIER
—◆◆—	2-HOUR FIRE BARRIER
—◆◆S	2-HOUR FIRE SMOKE BARRIER
—SP—	SMOKE PARTITION
NOTE: SEE FIRE PROTECTION SHEETS.	

—◆— 1-HOUR FIRE BARRIER
 —◆S— 1-HOUR FIRE SMOKE BARRIER
 —◆◆— 2-HOUR FIRE BARRIER
 —◆◆S— 2-HOUR FIRE SMOKE BARRIER
 —SP— SMOKE PARTITION

—◆S— 1-HOUR FIRE SMOKE BARRIER

—◆◆S— 2-HOUR FIRE SMOKE BARRIER

NOTE: SEE FIRE PROTECTION SHEETS.

CONSULTANTS:



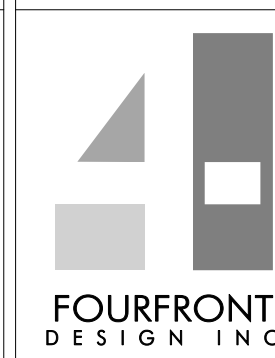
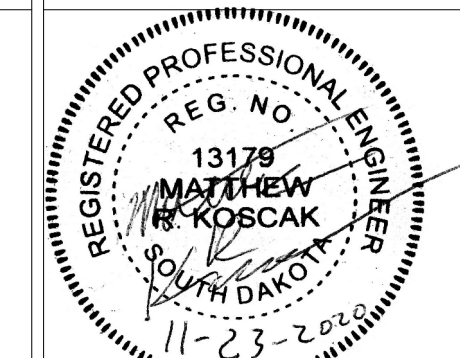
TERRASITE DESIGN
1635 DEADWOOD AVENUE
RAPID CITY, SOUTH DAKOTA 57702
PH: (605) 791-1736



Albertson Engineering Inc.

ALBERTSON ENGINEERING, INC.
3202 WEST MAIN STREET, SUITE C
RAPID CITY, SOUTH DAKOTA 57702
PH: (605) 343-9606

FARRIS ENGINEERING
12700 WEST DODGE ROAD
OMAHA, NEBRASKA 68154
PH: (402) 330-5900



FOURFRONT DESIGN, INC.
517 7TH STREET
RAPID CITY, SOUTH DAKOTA 57701
PH: (605) 342-9470
FAX: (605) 342-2377
WWW.FOURFRONTDESIGN.COM

INTERSTITIAL SPACE WATER AND
COMPRESSED AIR PLAN-ALTERNATE
BID#3

Approved: Project Director

Omaha VA Medical Center

Project Title	VA NWIHCS OMC CAMPUS - AE Construct Sterile Processing Service
---------------	--

Location	4101 Woolworth Ave #4199 Omaha, Ne 68105
----------	---

Date
11 / 23 / 2020

Checked
MK

Draw	BM
------	----

Project Number	16.2330.A08
Building Number	2

	Drawing Number
	P 1 02

Page 148 of 148

Dwa 148 of

Office of
Construction
and Facilities
Management

Department of
Veterans Affairs

GENERAL NOTES:

- CONTRACTOR WILL BE REQUIRED TO COREDRILL HOLES AND CREATE NEW PENETRATIONS IN EXISTING CONCRETE THROUGHOUT THIS PROJECT. SOME INSTANCES OF COREDRILLING ARE SHOWN ON PLANS, WHILE MOST ARE NOT. CONTRACTOR TO PROVIDE NEW HOLES FOR NEW PLUMBING AND ALSO CREATE RATED FIRE SEALED ASSEMBLY ONCE PIPE IS INSTALLED AT EVERY PENETRATION (WALL OR FLOOR) LOCATION.
- NEW PIPE ROUTING SHOWN IS DIAGRAMMATIC AND HAS NOT BEEN TESTED TO VERIFY THAT NEW PIPING DOES NOT CONFLICT WITH EXISTING CONDITIONS AROUND THE NEW ROUTE SHOWN. CONTRACTOR TO COORDINATE AND PROVIDE OFFSETS TO ALLOW NEW PIPING TO BE INSTALLED IN EXISTING CEILING AS REQUIRED TO COMPLETE THE INTENDED ROUTING. IF CONFLICT ARISING THAT DOES NOT ALLOW FOR OFFSET AND REROUTING, CONTRACTOR TO NOTIFY ENGINEER OF DISCREPANCY.

SPS EQUIPMENT UTILITY CONNECTION SCHEDULE

MANUFACTURER	MODEL/DESCRIPTION	EQUIPMENT TAG	MECHANICAL PIPE CONNECTIONS (STEAM)				PLUMBING CONNECTIONS					NOTES
			SIZE	PRESSURE	SUPPLY	CONDENSATE RETURN	WASTE	DCW SOFT	DHW	PURE WATER	COMPRESSED AIR	
STERIS	COUNTER, CLEANUP, WITH 3 SINKS	1	1-1/2"	-	-	-	1-1/2"	1-1/2"	1-1/2"	1-1/2"	1/4"	1
STERIS	WASHER, DISINFECTOR, STM, 1DO, RSCD1WLL, 26X24X24 SHAM	2	3" OD	30-80 PSIG MAX 90	1/2"	1/2"	4" FS	1/2"	1/2"	1/2"	1/8"	1
STERIS	INNOVAVE PCF SONIC IRRIGATOR	3	-	-	-	-	3/4"	3/4"	3/4"	3/4"	-	2
STERIS	INNOVAVE UNITY ULTRASONIC IRRIGATOR	3A	-	-	-	-	3/4"	3/4"	3/4"	3/4"	-	2
STERIS	RACK RETURN, LOAD/UNLOAD	4	-	-	-	-	1-1/2"	-	-	-	1/4"	-
STERIS	WASHER, CART & UTENSIL, 2 DO, PIT MNTD, RSCD 2 WLL	5	6" OD	30-80 PSIG	1-1/2"	1"	4"	1"	1"	3/4"	1/2"	1
STERIS	CART, SCOPE, TRANSPORT	6	-	-	-	-	-	-	-	-	-	-
STERIS	WASHER, FIBER SCOPE, PASS-THROUGH	7	4"	-	-	-	4" FD	1/2"	1/2"	-	1/4"	3
CANTEL	40" AUTOMATED PASS-THROUGH WINDOW	8	-	-	-	-	-	-	-	-	-	-
CANTEL	CABINET, STORAGE, HANGING SCOPES	9	-	-	-	-	-	-	-	-	1/4"	-
STERIS	RACK, STERILE WRAP	4A, 10	-	-	-	-	1-1/2"	-	-	-	1/4"	5
STERIS	CART, WASHER TRANSFER	11	-	-	-	-	-	-	-	-	-	-
STERIS	LOW TEMPERATURE STERILIZER	12	-	-	-	-	-	-	-	-	-	-
STERIS	ADJUSTABLE DELUXE WORKSTATION	13	-	-	-	-	-	-	-	-	-	-
STERIS	AMSCO 400 SERIES SMALL STEAM STERILIZER	14	-	-	1/2"	-	1-1/2"	1"	-	-	-	4
STERIS	AMSCO 600 MEDIUM STEAM STERILIZER	15	-	-	1/2"	-	1-1/2"	3/4"	-	-	1/2"	4
STERIS	LOADING CAR & TRANSFER CARRIAGE, 26.5"x26.5"x63" CHAMBER	16	-	-	-	-	-	-	-	-	-	-
STERIS	DISPENSER, DETERGENT, AUTOMATIC	17	-	-	-	-	-	-	-	-	-	-

GENERAL NOTE: ALL MEDICAL EQUIPMENT TO BE PROVIDED UNDER THIS CONTRACT BY THE GENERAL CONTRACTOR. PLUMBING AND MECHANICAL CONTRACTORS TO PROVIDE ALL PROPER UTILITY CONNECTIONS AND ACCESSORIES PER THIS SCHEDULE AND EQUIPMENT MANUFACTURER WRITTEN INSTRUCTIONS.

NOTES:

- PROVIDE WATER LINES WITH ISOLATION VALVES, UNIONS, WATER HAMMER ARRESTORS AND VACUUM BREAKERS.
- EQUIPMENT HAS INTEGRAL AIR GAP AND OVERFLOW IN WATER SUPPLY.
- EQUIPMENT WITH THERMOSTATIC MIXING VALVE, ISOLATION VALVES, PRESSURE REGULATORS, PRESSURE GAUGES, TEMPERATURE GAUGES AND BYPASS TO FLOOR DRAIN.
- PROVIDE WITH ISOLATION VALVES, UNION, TEST PORT CONNECTION, AND VACUUM BREAKER FOR WATER SUPPLY.
- PIPE DRAIN TO SAME FLOOR SINK FOR EQUIPMENT 2.

WALL RATING LEGEND

- 1-HOUR FIRE BARRIER
 - 1-HOUR FIRE SMOKE BARRIER
 - 2-HOUR FIRE BARRIER
 - 2-HOUR FIRE SMOKE BARRIER
 - S - SMOKE PARTITION
- NOTE: SEE FIRE PROTECTION SHEETS.

SPS MEDICAL EQUIPMENT LEGEND

TAG	JSN	NAME	QTY	ROOM NO.	BASIS OF DESIGN UTILITY REQUESTS
1915 DECON					
01	A1195	COUNTER, CLEANUP, WITH 3 SINKS	4	1915, 1905	STERIS 120V, 15A, LIFT SYSTEM - 120VAC, 3A, HW, CW, PW, D, A
02	S0940	WASHER, DISINFECTOR, STM, 1DO, RSCD1WLL, 26X24X24 SHAM	3	1915	STERIS 480V, 30A, 3-PH, 60HZ, S, CR, HW, CW, PW, D, A
03	-	INNOVAVE PCF SONIC IRRIGATOR	2	1915	STERIS 208V, 30A, 3-PH, 60HZ, HW, CW, PW, D
04	TRITEC 72		3	1915	STERIS 208V, 20A, 1-PH, 60HZ, HW, CW, D
05	F2410	RACK RETURN	1	1915	STERIS 120V, 15A, 1-PH, 60HZ, A
06	SCS LOAD-UNLOAD		1	1915	STERIS 120V, 15A, 1-PH, 60HZ, D, A
1917 - AUTOMATIC CARTWASH AREA (CWASH2)					
07	S3185	WASHER, CART & UTENSIL, 2 DO, PIT MNTD, RSCD 2 WLL	2	1917	STERIS 480V, 50/60HZ, PW, HW, CW, S, A, D
1905 - SCOPE PROCESSING					
08	F0540	CART, SCOPE, TRANSPORT	1	1905	
09	S2627	WASHER, FIBER SCOPE, PASS-THROUGH	3	1905	MEDVATOR 120V, 60HZ, D, A, HW, CW
10	S1905	40" AUTOMATED PASS-THROUGH WINDOW	2	1915, 1905	STERIS 230V, 60Hz, 1-PH, 15A, 208V, 60Hz, 3-PH, 15A
1906 - SCOPE STAGING ROOM (CSST1)					
11	M3160	CABINET, STORAGE, HANGING SCOPES	4	1906	MEDVATOR 100-240VAC, 50/60HZ, 15A, A
1923 - PREP ASSEMBLY					
12	S0047	SCS LOAD-UNLOAD	6	1923	STERIS 120V, 15A, 1-PH, 60HZ, D, A
13	S0048	CART, WASHER TRANSFER	3	1923	
14	-	LOW TEMPERATURE STERILIZER	3	1923	AMSCO 200-208V, 50-60HZ
15	S9610	ADJUSTABLE DELUXE WORKSTATION	8	1915, 1923	
16	-	AMSCO 400 SERIES SMALL STEAM STERILIZER	1	1923	STERIS 480V, 60HZ, 3-PH, 4A, 120V, 60HZ, 1-PH, 15A, S, CW, D, A
1920 - STERILIZATION					
17	-	AMSCO 600 MEDIUM STEAM STERILIZER	3	1920	STERIS 480V, 60HZ, 3-PH, 20A, S, CW, D, A
18	S0495	LOADING CAR & TRANSFER CARRIAGE, 26.5"x26.5"x63" CHAMBER	6	1920	STERIS
1912 - H2O					
19	K2020	DISPENSER, DETERGENT, AUTOMATIC	1	1912	STERIS
20	M4871	SYSTEM, REVERSE OSMOSIS, WATER	1	1912	CULLIGAN
21	-	TRACK MOUNTED - SUSPENDED SHELVING	2	1921	LEVpro

NOTE: SEE SHEET QH-101 FOR MORE SPS MEDICAL EQUIPMENT DETAILS.

CONSTRUCTION DOCUMENTS

CONSULTANTS:		ARCHITECT		Drawing Title		Project Title		Project Number		Office of Construction and Facilities Management	
TERRASITE DESIGN 1635 DEADWOOD AVENUE RAPID CITY, SOUTH DAKOTA 57702 PH: (605) 343-9606		FARRIS ENGINEERING 12700 WEST DODGE ROAD OMAHA, NEBRASKA 68154 PH: (402) 330-5900		FOURFRONT DESIGN, INC. 517 7TH STREET RAPID CITY, SOUTH DAKOTA 57701 PH: (605) 342-9470 FAX: (605) 342-2377 WWW.FOURFRONTDESIGN.COM		VA NWIHCS OMC CAMPUS - AE Construct Sterile Processing Service		16.2330.A08			
COMPLIANCE REVIEW INCLUDED		2/23/2024		Approved: Project Director		Location		Drawing Number		Dwg. 150 of 193	
Revisions:		Date		Omaha VA Medical Center		4101 Woolworth Ave #4199 Omaha, Ne 68105		P 1.04			
11/23/2020		RD		BM		Date		Checked			

GENERAL NOTES:

1. CONTRACTOR WILL BE REQUIRED TO COREDRILL HOLES AND CREATE NEW PENETRATIONS IN EXISTING CONCRETE THROUGHOUT THIS PROJECT. SOME INSTANCES OF COREDRILLING ARE SHOWN ON PLANS, WHILE MOST ARE NOT. CONTRACTOR TO PROVIDE NEW HOLES FOR NEW PLUMBING AND ALSO CREATE RATED FIRE SEALED ASSEMBLY ONCE PIPE IS INSTALLED AT EVERY PENETRATION (WALL OR FLOOR) LOCATION.
2. NEW PIPE ROUTING SHOWN IS DIAGRAMMATIC AND HAS NOT BEEN TESTED TO VERIFY THAT NEW PIPING DOES NOT CONFLICT WITH EXISTING CONDITIONS AROUND THE NEW ROUTE SHOWN. CONTRACTOR TO COORDINATE AND PROVIDE OFFSETS TO ALLOW NEW PIPING TO BE INSTALLED IN EXISTING CEILING AS REQUIRED TO COMPLETE THE INTENDED ROUTING. IF CONFLICT ARISES THAT DOES NOT ALLOW FOR OFFSET AND REROUTING, CONTRACTOR TO NOTIFY ENGINEER OF DISCREPANCY.

SPS EQUIPMENT UTILITY CONNECTION SCHEDULE

SPS EQUIPMENT UTILITY CONNECTION SCHEDULE												
MANUFAC TURER	MODEL/ DESCRIPTION	EQUIPMENT TAG	MECHANICAL PIPE CONNECTIONS (STEAM)				PLUMBING CONNECTIONS					NOTES
			SIZE	PRESSURE	SUPPLY SIZE	CONDENSATE RETURN	WASTE	DCW SOFT	DHW	PURE WATER	COMPRESSED AIR	
STERIS	COUNTER, CLEANUP, WITH 3 SINKS	1	-	-	-	-	1-1/2"	1/2"	1/2"	1/2"	1/4"	-
STERIS	WASHER, DISINFECTOR, STM, 1DO, RSCD1WLL, 26X24X24 SHAM	2	3" OD	30-80 PSIG MAX 90	1/2"	1/2"	4" FS	1/2"	1/2"	1/2"	1/8"	1
STERIS	INNOVAVE PCF SONIC IRRIGATOR	3	-	-	-	-	3/4"	3/4"	3/4"	3/4"	-	2
STERIS	INNOVAVE UNITY ULTRASONIC IRRIGATOR	3A	-	-	-	-	3/4"	3/4"	3/4"	-	-	2
STERIS	RACK RETURN, LOAD/UNLOAD	4	-	-	-	-	1-1/2"	-	-	-	1/4"	-
STERIS	WASHER, CART & UTENSIL, 2 DO, PIT MNTD, RSCD 2 WLL	5	6" OD	30-80 PSIG	1-1/2"	1"	4"	1"	1"	3/4"	1/2"	1
STERIS	CART, SCOPE, TRANSPORT	6	-	-	-	-	-	-	-	-	-	-
CANTEL	WASHER, FIBER SCOPE, PASS-THROUGH	7	4"	-	-	-	4" FD	1/2"	1/2"	-	1/4"	3
STERIS	40" AUTOMATED PASS-THROUGH WINDOW	8	-	-	-	-	-	-	-	-	-	-
CANTEL	CABINET, STORAGE, HANGING SCOPES	9	-	-	-	-	-	-	-	-	1/4"	-
STERIS	RACK, STERILE WRAP	4A, 10	-	-	-	-	1-1/2"	-	-	-	1/4"	5
STERIS	CART, WASHER TRANSFER	11	-	-	-	-	-	-	-	-	-	-
STERIS	LOW TEMPERATURE STERILIZER	12	-	-	-	-	-	-	-	-	-	-
STERIS	ADJUSTABLE DELUXE WORKSTATION	13	-	-	-	-	-	-	-	-	-	-
STERIS	AMSCO 400 SERIES SMALL STEAM STERILIZER	14	-	-	1/2"	-	1-1/2"	1"	-	-	-	4
STERIS	AMSCO 600 MEDIUM STEAM STERILIZER	15	-	-	1/2"	-	1-1/2"	3/4"	-	-	1/2"	4
STERIS	LOADING CAR & TRANSFER CARRIAGE, 26.5"x26.5"x63" CHAMBER	16	-	-	-	-	-	-	-	-	-	-
STERIS	DISPENSER, DETERGENT, AUTOMATIC	17	-	-	-	-	-	-	-	-	-	-
GENERAL NOTE: ALL MEDICAL EQUIPMENT TO BE PROVIDED UNDER THIS CONTRACT BY THE GENERAL CONTRACTOR. PLUMBING AND MECHANICAL CONTRACTORS TO PROVIDE ALL PROPER UTILITY CONNECTIONS AND ACCESSORIES PER THIS SCHEDULE AND EQUIPMENT MANUFACTURER WRITTEN INSTRUCTIONS.												
NOTES:												
1. PROVIDE WATER LINES WITH ISOLATION VALVES, UNIONS, WATER HAMMER ARRESTORS AND VACUUM BREAKERS.												
2. EQUIPMENT HAS INTEGRAL AIR GAP AND OVERFLOW IN WATER SUPPLY.												
3. PROVIDE WITH THERMOSTATIC MIXING VALVE, ISOLATION VALVES, PRESSURE REGULATORS, PRESSURE GAUGES, TEMPERATURE GAUGES AND BYPASS TO FLOOR DRAIN.												
4. PROVIDE WITH ISOLATION VALVES, UNION, TEST PORT CONNECTION, AND VACUUM BREAKER FOR WATER SUPPLY.												
5. PIPE DRAIN TO SAME FLOOR SINK FOR EQUIPMENT 2.												

WALL RATING LEGEND

◆	1-HOUR FIRE BARRIER
◆-S	1-HOUR FIRE SMOKE BARRIER
◆◆	2-HOUR FIRE BARRIER
◆◆-S	2-HOUR FIRE SMOKE BARRIER
SP	SMOKE PARTITION

NOTE: SEE FIRE PROTECTION SHEETS.

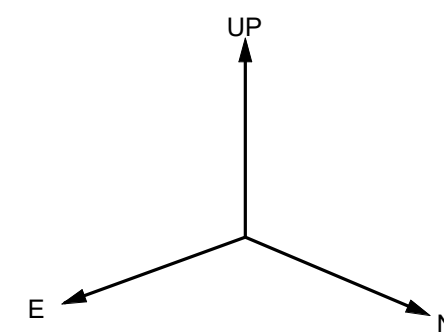
SPS MEDICAL EQUIPMENT LEGEND

TAG	JSN	NAME	QTY	ROOM NO.	BASIS OF DESIGN UTILITY REQUESTS
1915 DECON					
01	A1195	COUNTER, CLEANUP, WITH 3 SINKS	4	1915, 1905	STERIS 120V, 15A, LIFT SYSTEM - 120VAC, 3A, HW, CW, PW, D, A
02	S0940	WASHER, DISINFECTOR, STM, 1DO, RSCD1WLL, 26X24X24 SHAM	3	1915	STERIS 480V, 30A, 3-PH, 60HZ, S, CR, HW, CW, PW, D, A
03	-	INNOVAVE PCF SONIC IRRIGATOR	2	1915	STERIS 208V, 30A, 3-PH, 60HZ, HW, CW, PW, D
04	-	TRITEC 72	3	1915	STERIS 208V, 20A, 1-PH, 60HZ, HW, CW, D
05	F2410	RACK RETURN	1	1915	STERIS 120V, 15A, 1-PH, 60HZ, A
06	-	SCS LOAD-UNLOAD	1	1915	STERIS 120V, 15A, 1-PH, 60HZ, D, A
1917 - AUTOMATIC CARTWASH AREA (CWASH2)					
07	S3185	WASHER, CART & UTENSIL, 2 DO, PIT MNTD, RSCD 2 WLL	2	1917	STERIS 480V, 50/60HZ, PW, HW, CW, S, A, D
1905 - SCOPE PROCESSING					
08	F0540	CART, SCOPE, TRANSPORT	1	1905	-
09	S2627	WASHER, FIBER SCOPE, PASS-THROUGH	3	1905	MEDVATOR 120V, 60HZ, D, A, HW, CW
10	S1905	40" AUTOMATED PASS-THROUGH WINDOW	2	1915, 1905	STERIS 230V, 60Hz, 1-PH, 15A; 208V, 60Hz, 3-PH, 15A
1906 - SCOPE STAGING ROOM (CSST1)					
11	M3160	CABINET, STORAGE, HANGING SCOPES	4	1906	MEDVATOR 100-240VAC, 50/60HZ, 15A, A
1923 - PREP ASSEMBLY					
12	S0047	SCS LOAD-UNLOAD	6	1923	STERIS 120V, 15A, 1-PH, 60HZ, D, A
13	S0048	CART, WASHER TRANSFER	3	1923	-
14	-	LOW TEMPERATURE STERILIZER	3	1923	AMSCO 200-208V, 50-60HZ
15	S9610	ADJUSTABLE DELUXE WORKSTATION	8	1915, 1923	-
16	-	AMSCO 400 SERIES SMALL STEAM STERILIZER	1	1923	STERIS 480V, 60HZ, 3-PH, 4A, 120V, 60HZ, 1-PH, 15A, S, CW, D, A
1920 - STERILIZATION					
17	-	AMSCO 600 MEDIUM STEAM STERILIZER	3	1920	STERIS 480V, 60HZ, 3-PH, 20A, S, CW, D, A
1912 - H2O					
18	S0495	LOADING CAR & TRANSFER CARRIAGE, 26.5"x26.5"x63" CHAMBER	6	1920	STERIS
1912					
19	K2020	DISPENSER, DETERGENT, AUTOMATIC	1	1912	STERIS
20	M4871	SYSTEM, REVERSE OSMOSIS, WATER	1	1912	CULLIGAN
21	-	TRACK MOUNTED - SUSPENDED SHELVING	2	1921	LEVpro

NOTE: SEE SHEET QH-101 FOR MORE SPS MEDICAL EQUIPMENT DETAILS.

CONSTRUCTION DOCUMENTS

CONSULTANTS:		ARCHITECT		LEVEL 3 SPS WATER AND COMPRESSED AIR PLAN BID ALTERNATE #3		Project Title VA NWIHCS OMC CAMPUS - AE Construct Sterile Processing Service		Project Number 16.2330.A08		Office of Construction and Facilities Management	
TERRASITE DESIGN 1635 DEADWOOD AVENUE RAPID CITY, SOUTH DAKOTA 57702 PH: (605) 791-1736		ALBERTSON ENGINEERING, INC. 3202 WEST MAIN STREET, SUITE C RAPID CITY, SOUTH DAKOTA 57702 PH: (605) 343-9606		FOURFRONT DESIGN, INC. 517 7TH STREET RAPID CITY, SOUTH DAKOTA 57701 PH: (605) 342-9470 FAX: (605) 342-2377 WWW.FOURFRONTDESIGN.COM		Location 4101 Woolworth Ave #4199 Omaha, Ne 68105		Building Number 25			
FARRIS ENGINEERING 12700 WEST DODGE ROAD OMAHA, NEBRASKA 68154 PH: (402) 330-5900		REGISTERED PROFESSIONAL ENGINEER REG. NO. 13178 MATTHEW R. KOSCIK STATE OF NEBRASKA 11-03-2021		Approved: Project Director Omaha VA Medical Center		Date 11 / 23 / 2020		Checked MK		Drawn BM	
COMPLIANCE REVIEW INCLUDED Revisions:		2/23/2024 Date		16.2330.A08		P 1.04.1 Dwg. 151 of 193					





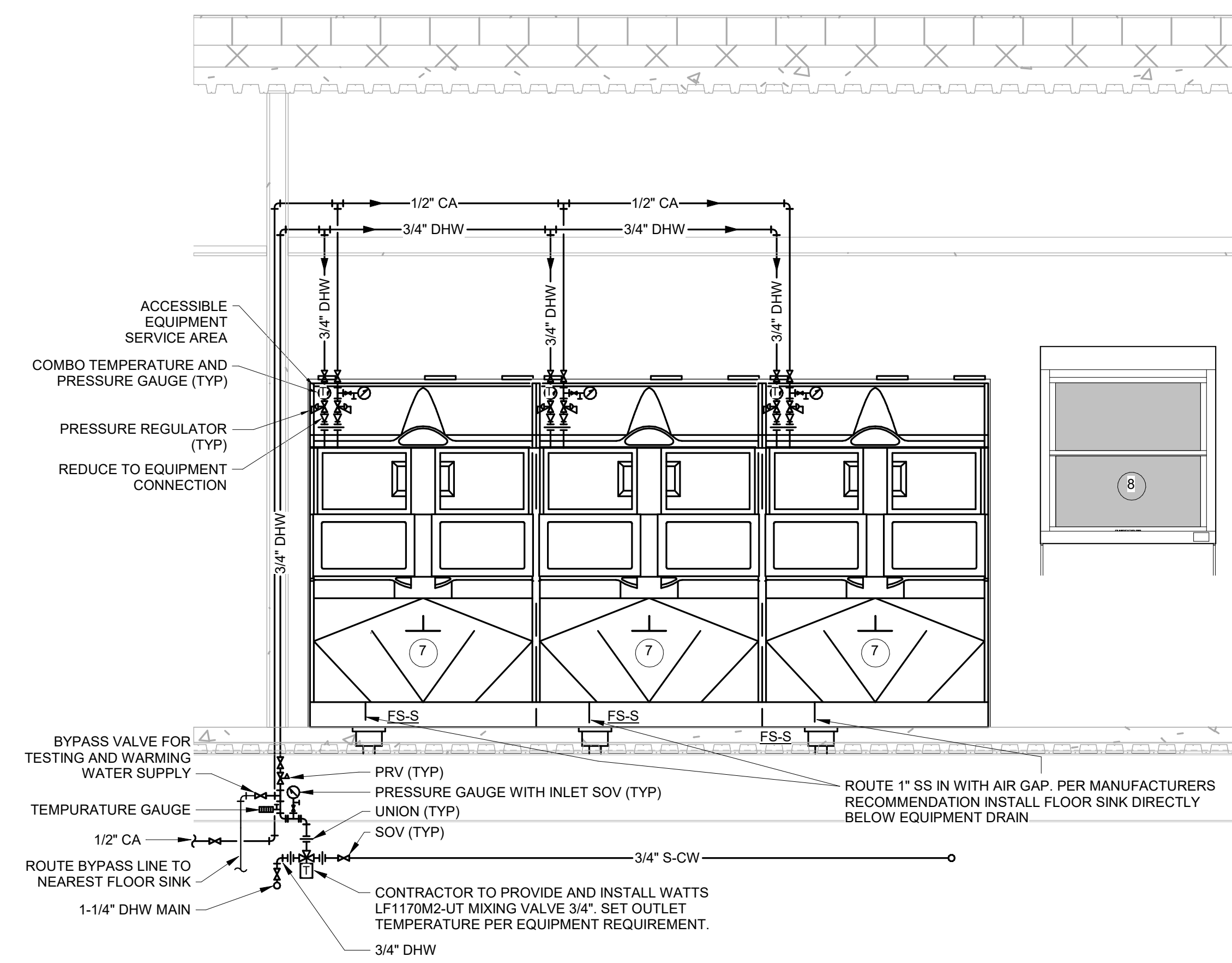
Office of
Construction
and Facilities
Management



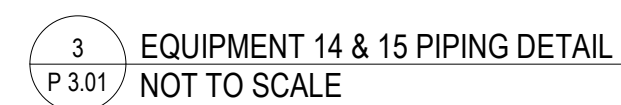
Department of
Veterans Affairs

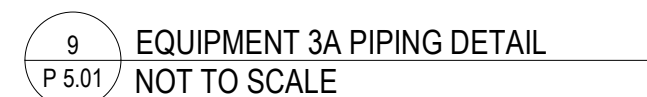
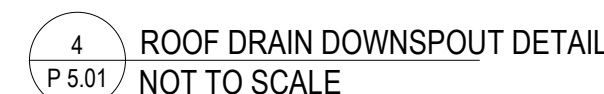
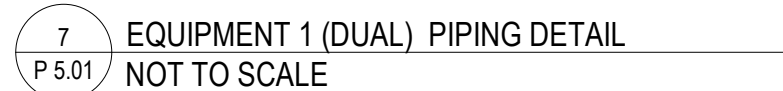
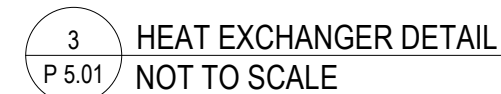
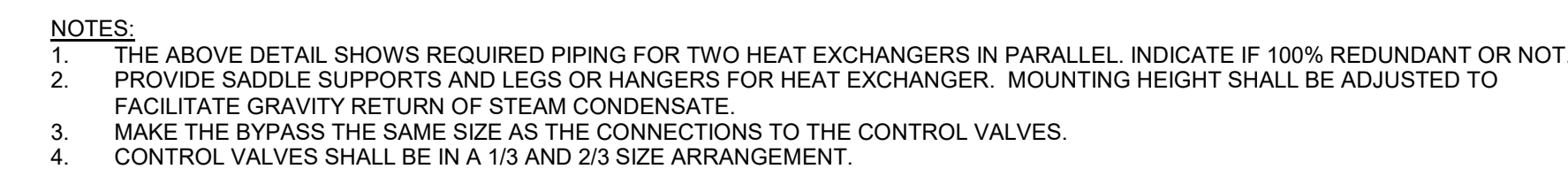
		<div>CONSULTANTS:</div> <div><div><div>TERRASITE DESIGN 1635 DEADWOOD AVENUE RAPID CITY, SOUTH DAKOTA 57702 PH: (605) 791-1736</div></div><div><div>ALBERTSON ENGINEERING, INC. 3202 WEST MAIN STREET, SUITE C RAPID CITY, SOUTH DAKOTA 57702 PH: (605) 343-9606</div></div><div><div>FARRIS ENGINEERING 12700 WEST DODGE ROAD OMAHA, NEBRASKA 68154 PH: (402) 330-5900</div></div></div> <div></div> <div><div><div>FOURFRONT DESIGN, INC. 517 7TH STREET RAPID CITY, SOUTH DAKOTA 57701 PH: (605) 342-9470 FAX: (605) 342-2377 WWW.FOURFRONTDESIGN.COM</div></div></div> <div><div>Drawing Title WATER AND COMPRESSED AIR ISOMETRIC VIEWS Bid ALTERNATE #3</div><div>Approved: Project Director Omaha VA Medical Center</div></div> <div>16.2330.A08</div> <div><div>Project Title VA NWHCS OMC CAMPUS - AE Construct Sterile Processing Service</div><div>Location 4101 Woolworth Ave #4199 Omaha, Ne 68105</div><div><div>Date 11 / 23 / 2020</div><div>Checked MK</div><div>Drawn BM</div></div><div><div>Project Number 16.2330.A08</div><div>Drawing Number P 2.01.1</div><div>Dwg. 155 of 193</div></div></div> <div><div>Office of Construction and Facilities Management</div><div> Department of Veterans Affairs</div></div>	
--	--	--	--

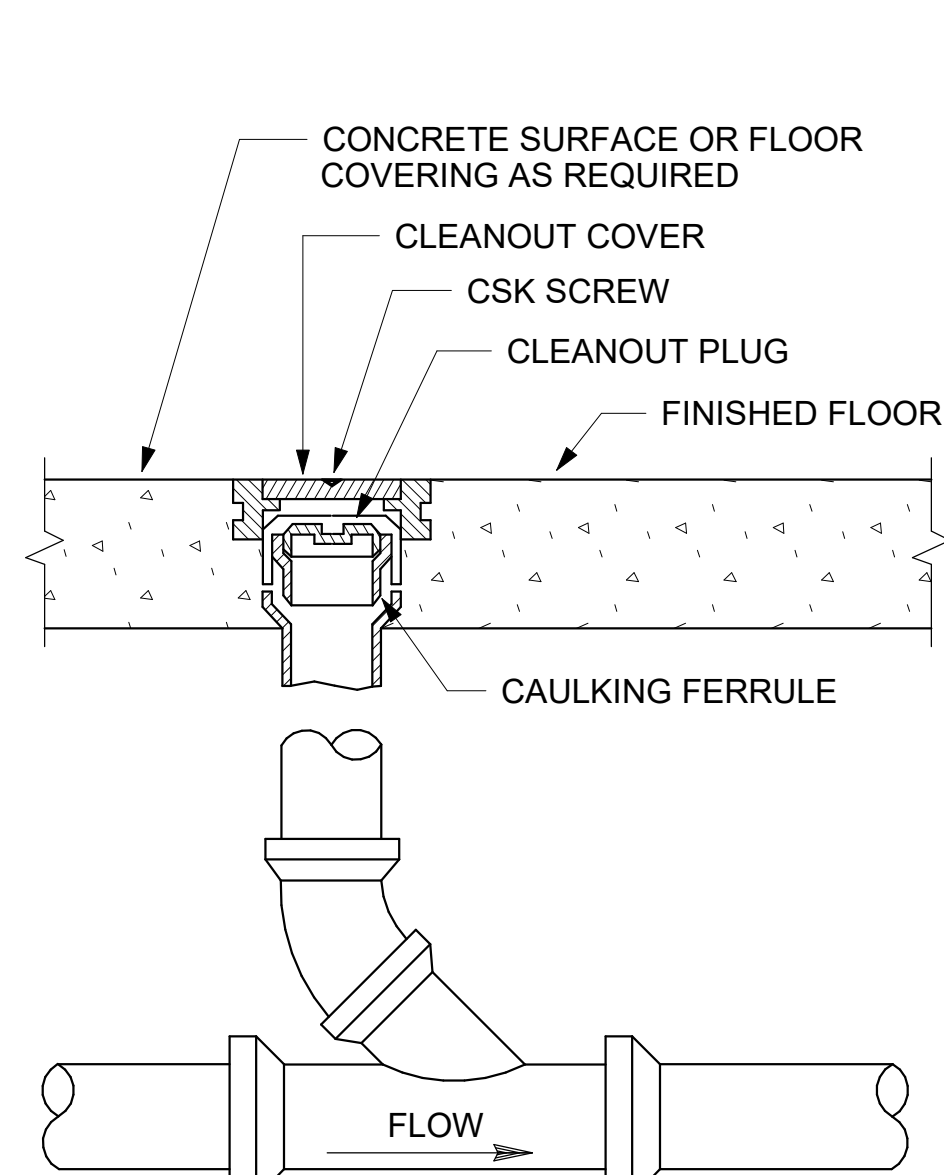
16.2330.A08



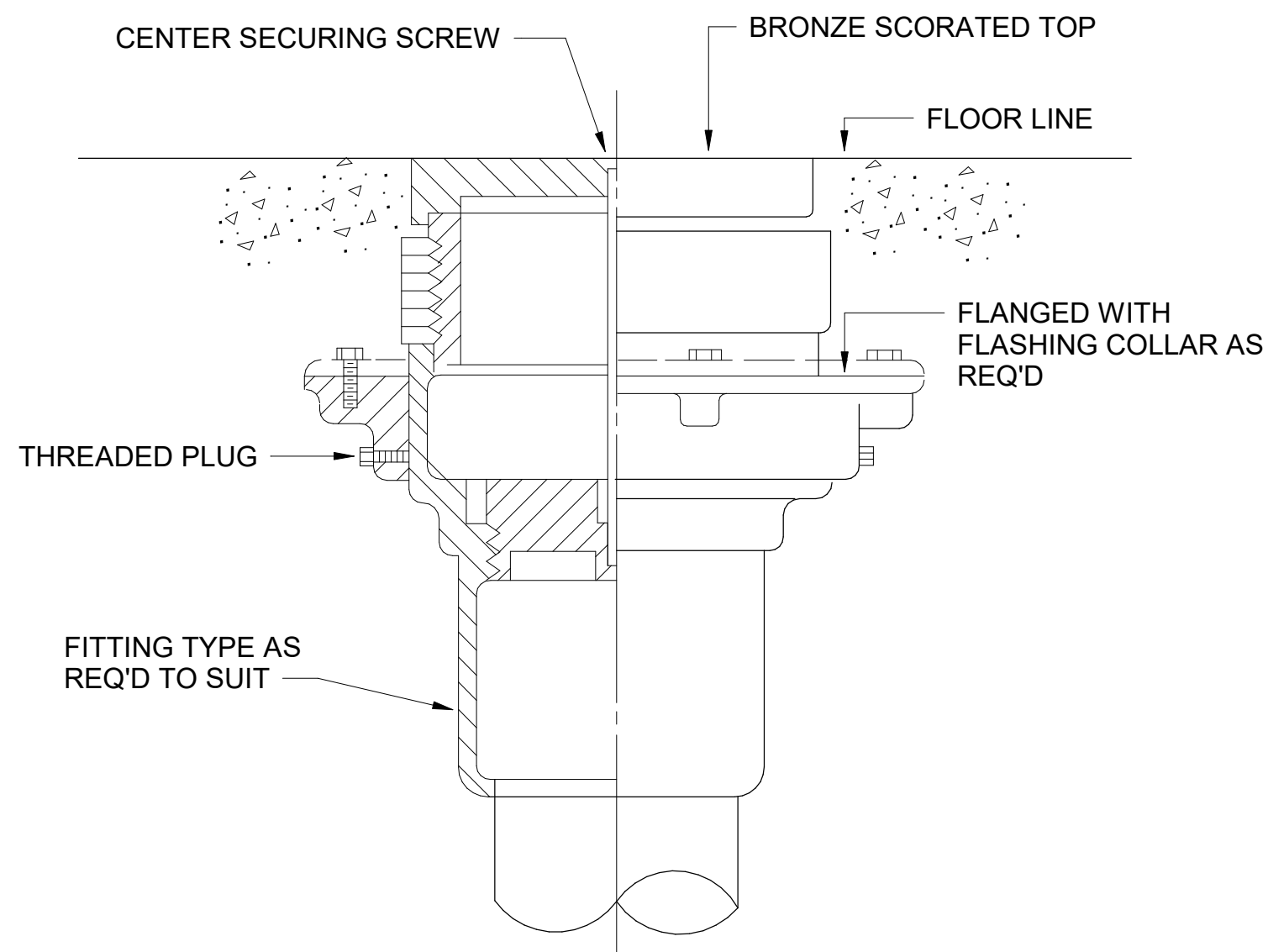
2 EQUIPMENT 7 PIPING DETAIL
P 3.01 NOT TO SCALE



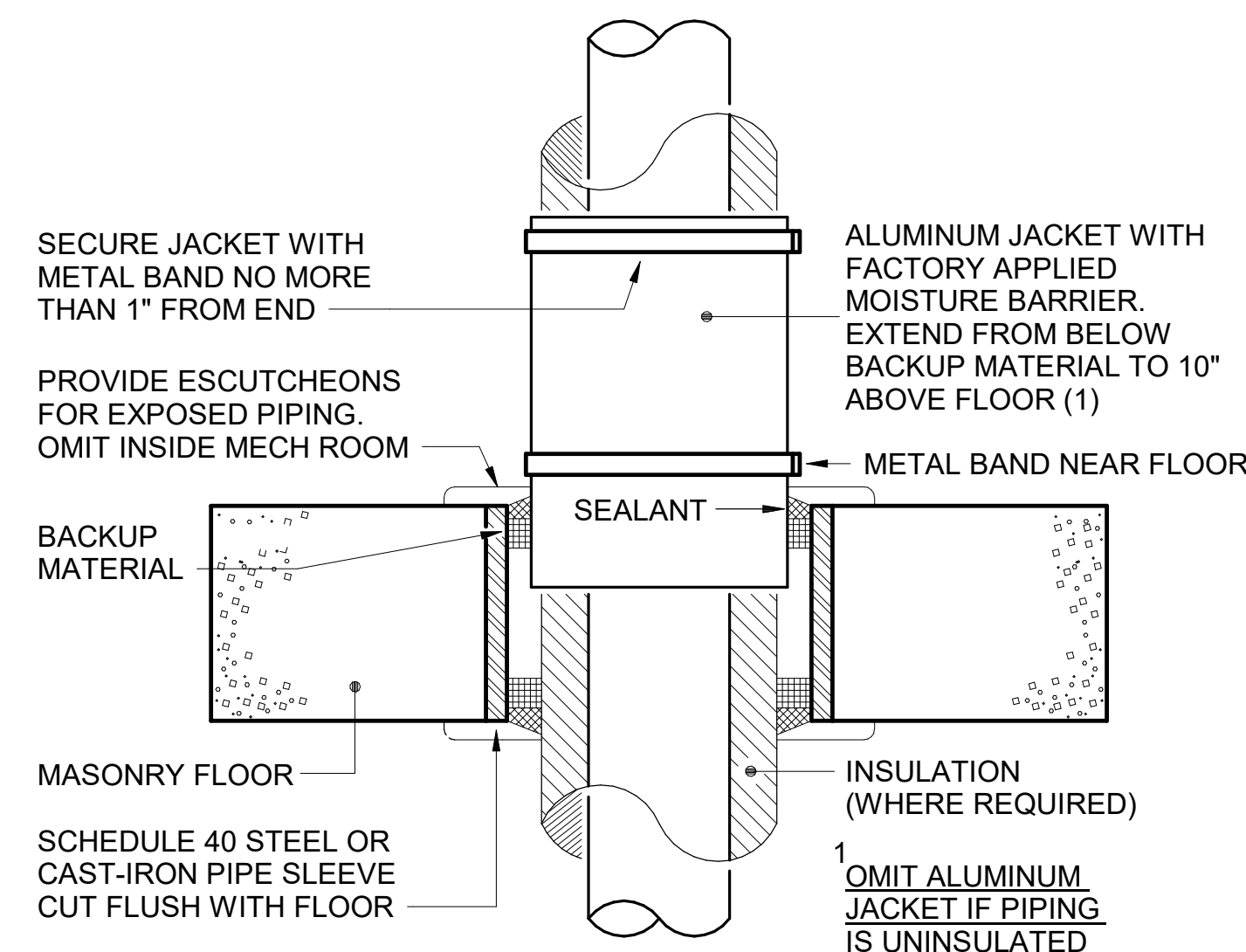
[illegible]



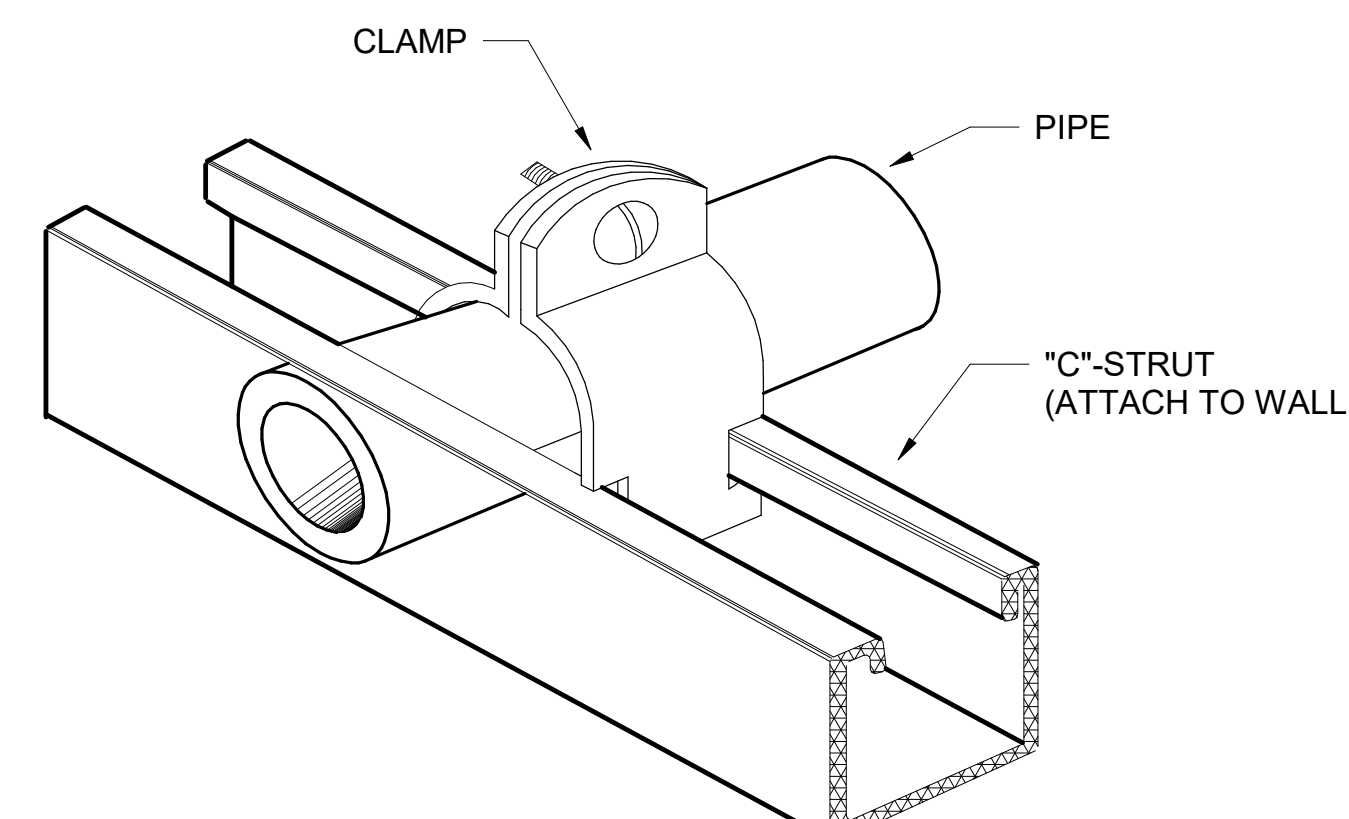
1 FINISHED ROOM FLOOR CLEANOUT
P 5.02 NOT TO SCALE



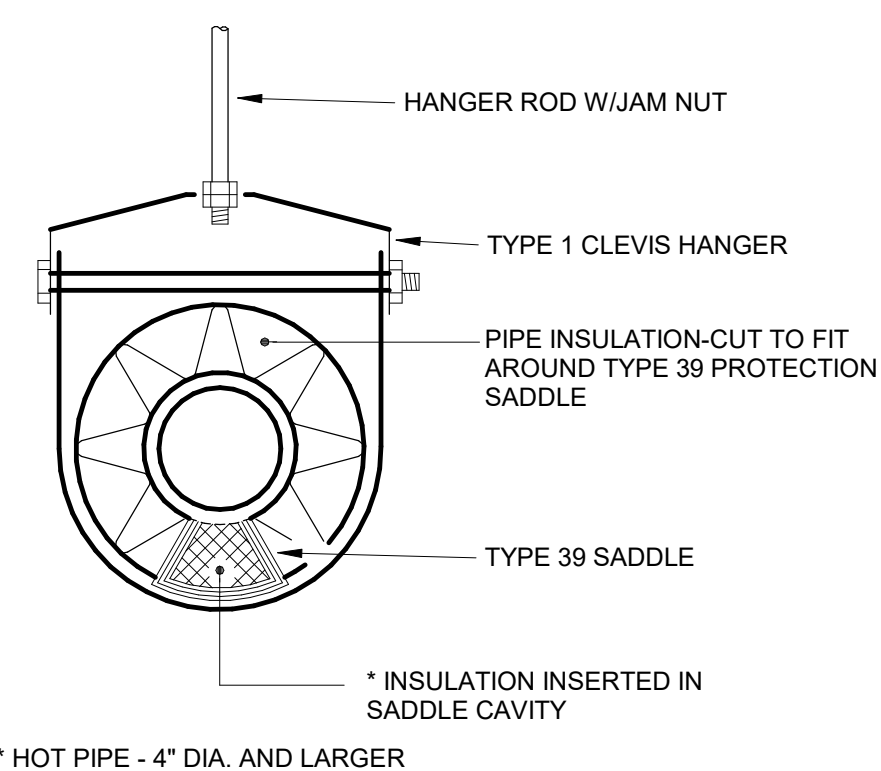
2 FLOOR CLEANOUT DETAIL
P 5.02 NOT TO SCALE



3 FLOOR PIPE PENETRATION DETAIL
P 5.02 NOT TO SCALE

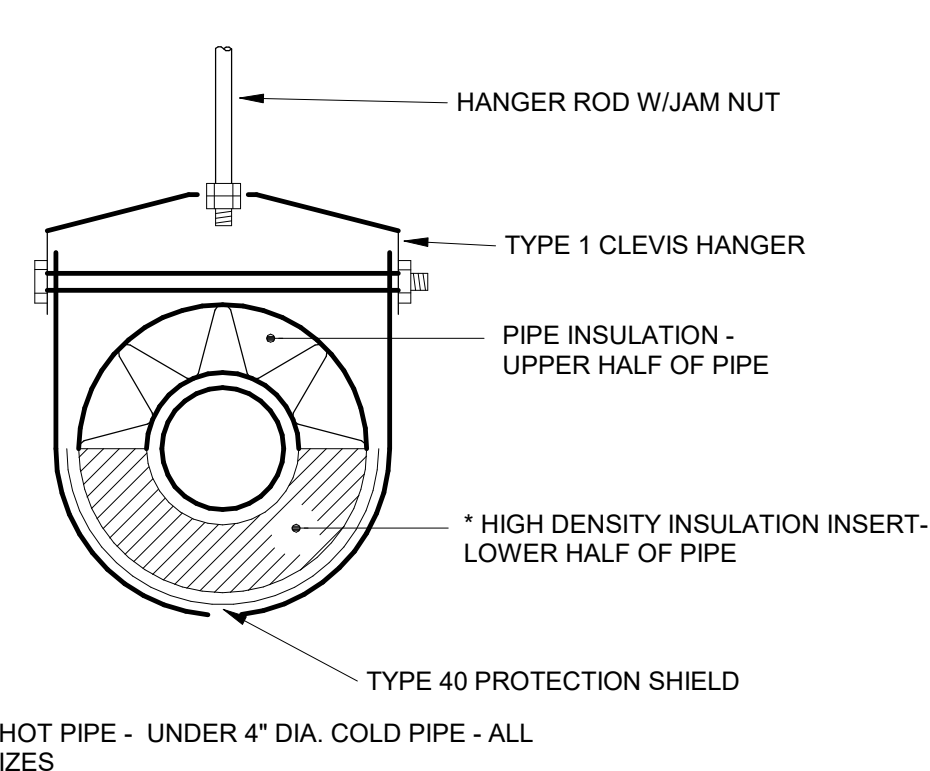


4 WALL PIPE SUPPORT DETAIL
P 5.02 NOT TO SCALE



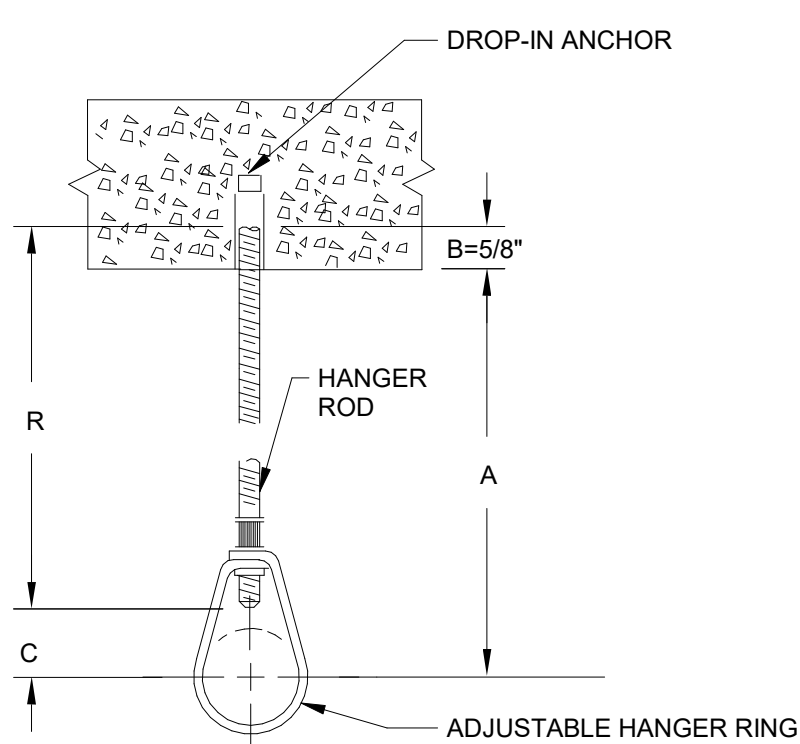
* HOT PIPE - 4" DIA. AND LARGER
(80 F & HIGHER)

INSULATED



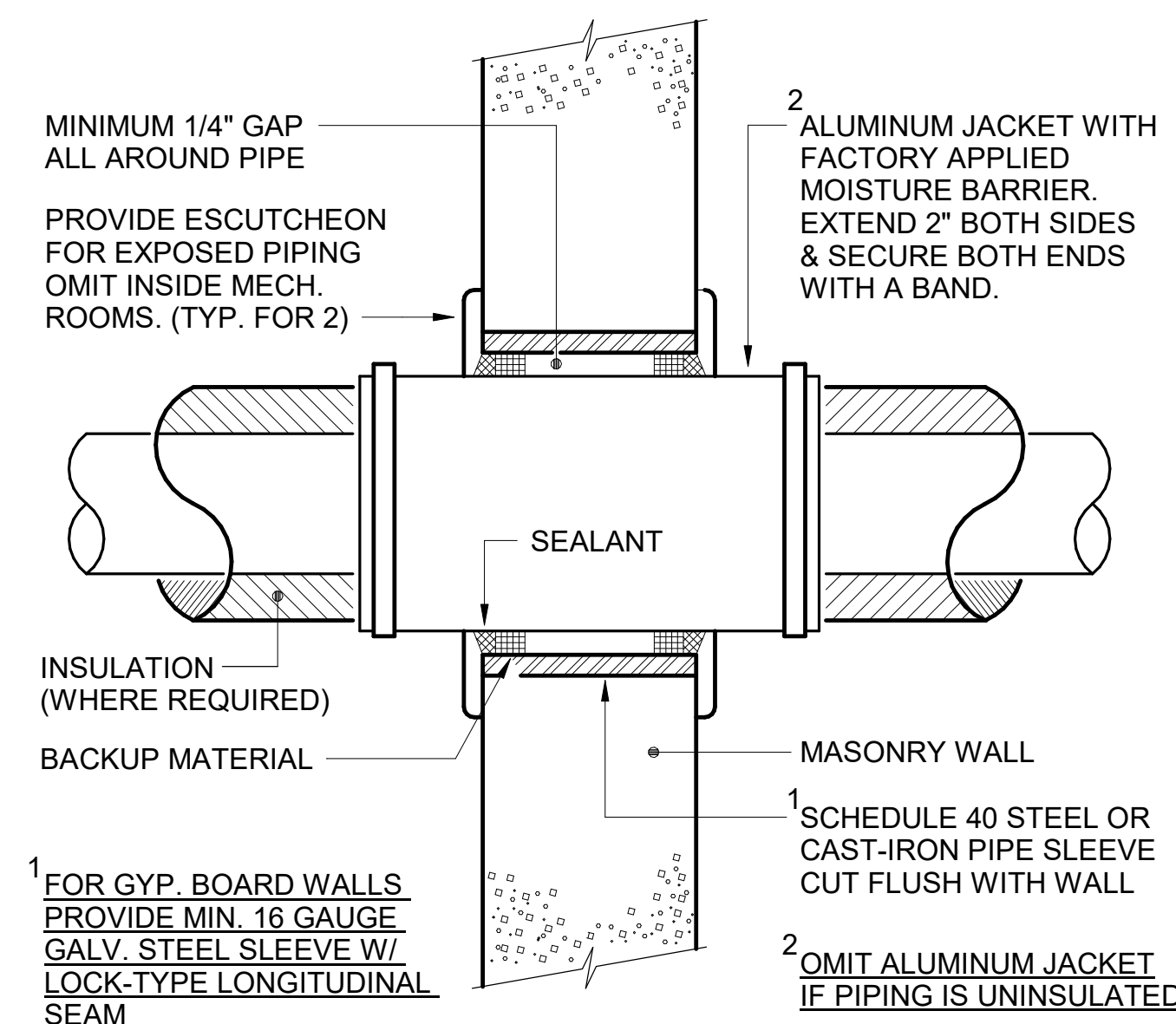
* HOT PIPE - UNDER 4" DIA. COLD PIPE - ALL SIZES

NON-INSULATED



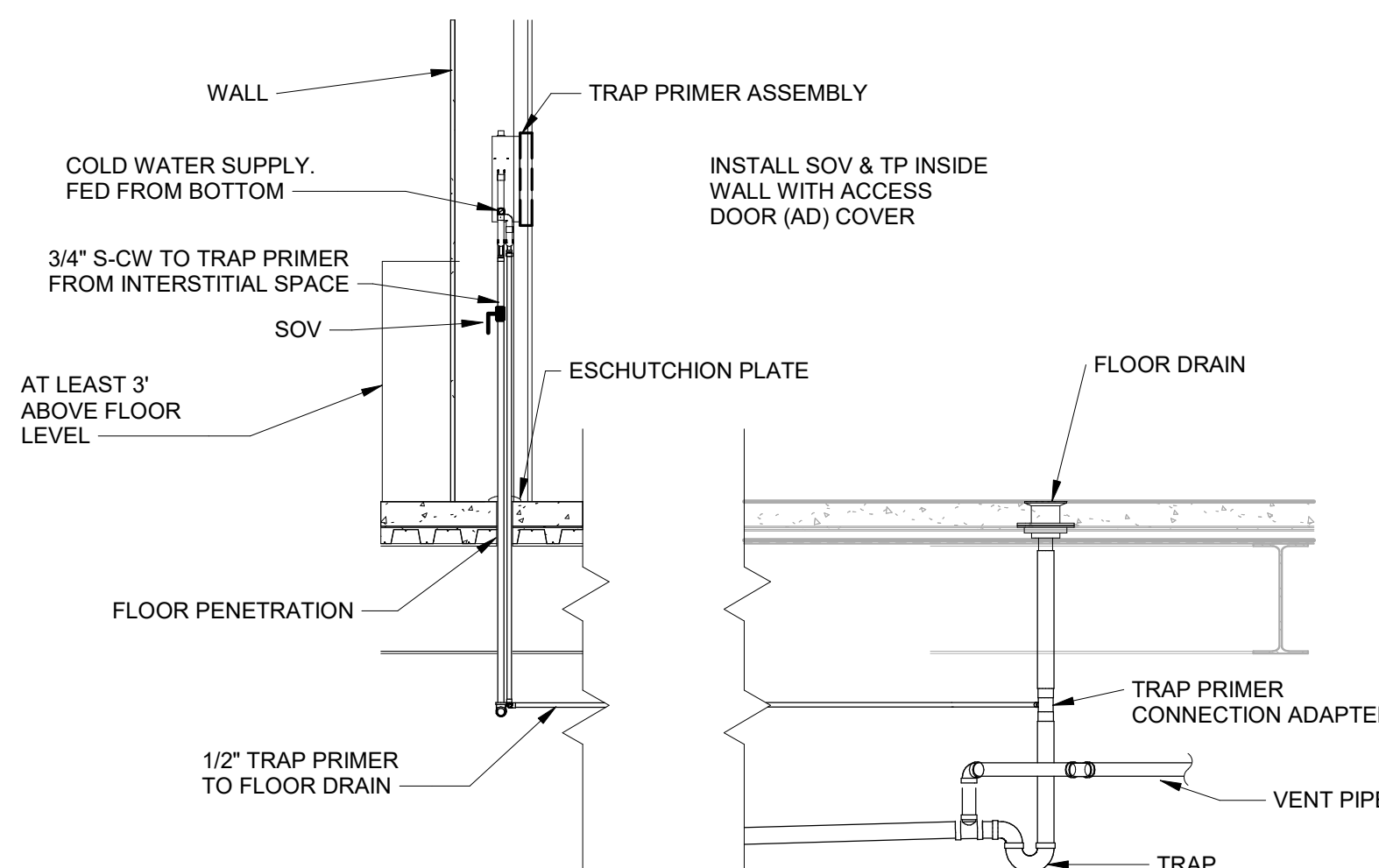
DESIGN DATA FOR CONCRETE HANGERS				
NOMINAL PIPE SIZE	MINIMUM A DIMENSION INCHES	HANGER TAKEOUT INCHES	ROD DIAMETER INCHES	FASTENERS ITEMS
1/2	3	-1/2	3/8	1-3/8" DROP-IN ANCHOR - HILTI HDI 3/8"
3/4	3	-1/2	"	"
1	3	-1/2	"	"
1 1/4	3 1/4	-3/4	"	"
1 1/2	3 1/2	-1	"	"
2	3 3/4	-1 1/4	"	"
2 1/2	4 3/4	-1 3/4	"	"
3	5	-2	"	"
4	5 3/4	-2 1/2	"	"
5	6 1/2	-3	1/2	1-1/2" DROP-IN ANCHOR - HILTI HDI 1/2"
6	7 1/2	-3 3/4	"	"
8	9	-5 1/4	"	"

* DRILL BIT SIZES REQUIRED: 1/2" FOR THE 3/8" ANCHOR AND 5/8" FOR THE 1/2" ANCHOR. A MINIMUM CONCRETE SLAB THICKNESS OF 4" IS RECOMMENDED.

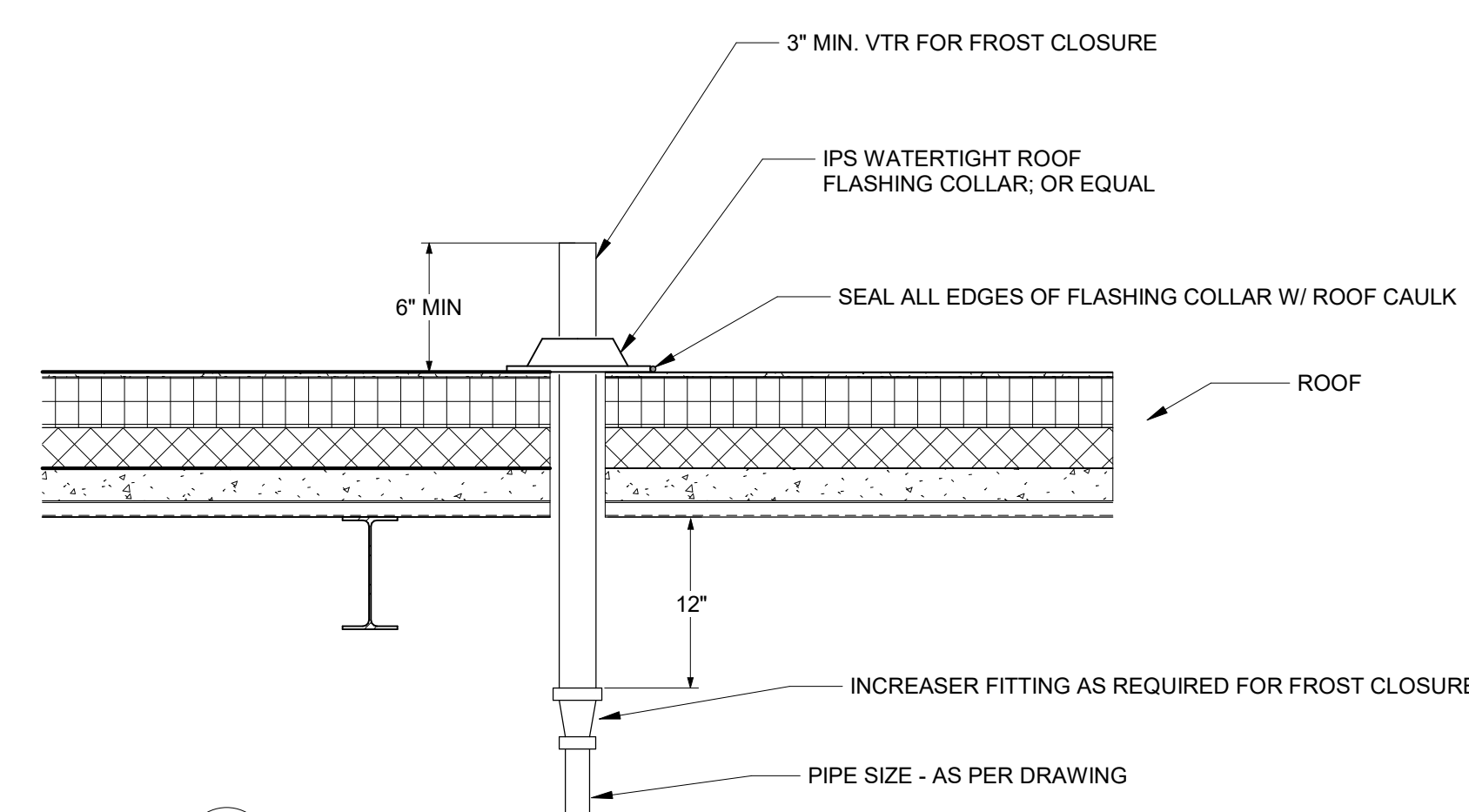


NOTE: PROVIDE FIRE SEAL AROUND ALL SMOKE PARTITIONS

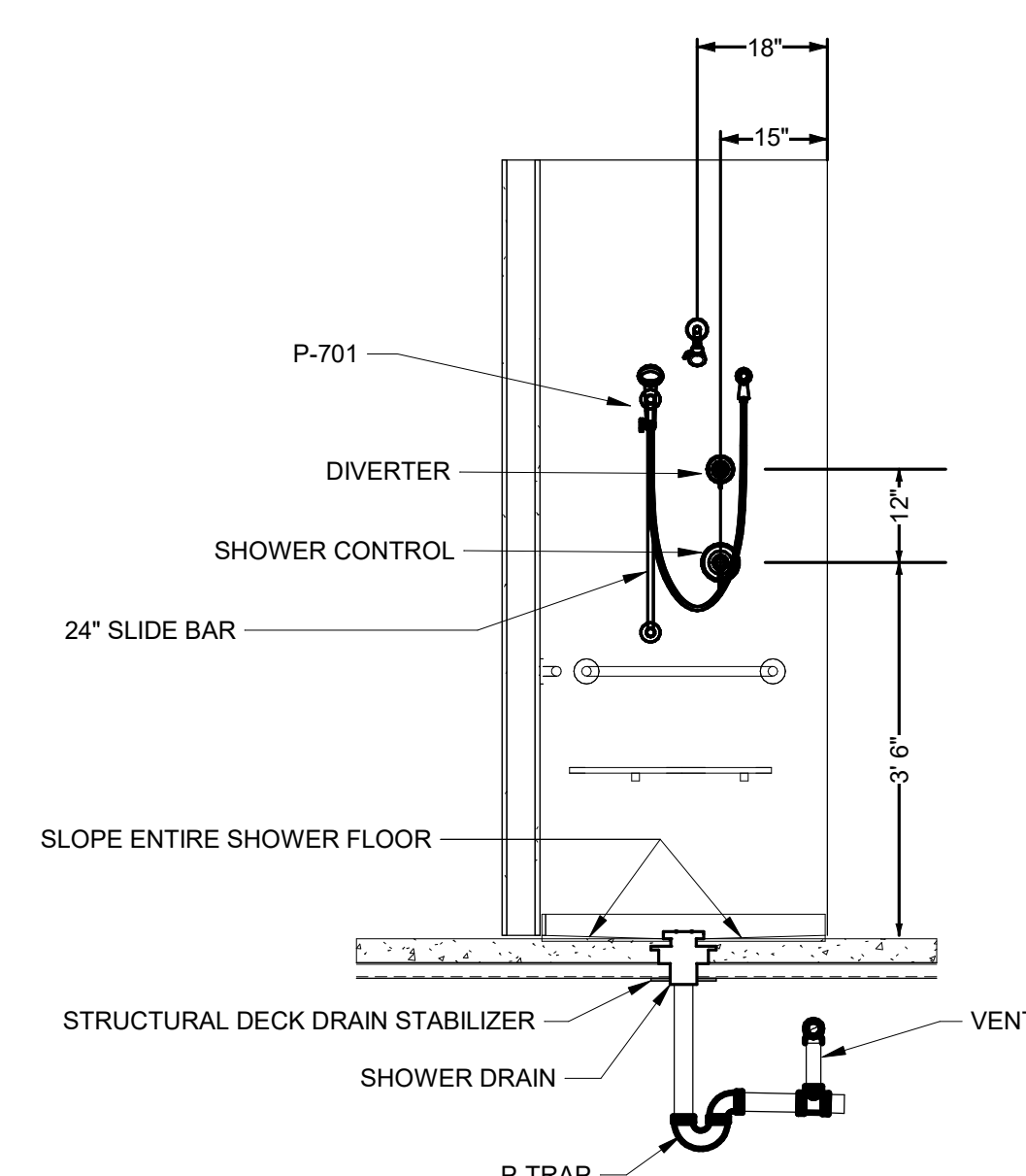
6 PIPE THROUGH WALL PENETRATION DETAIL
P 5.02 NOT TO SCALE



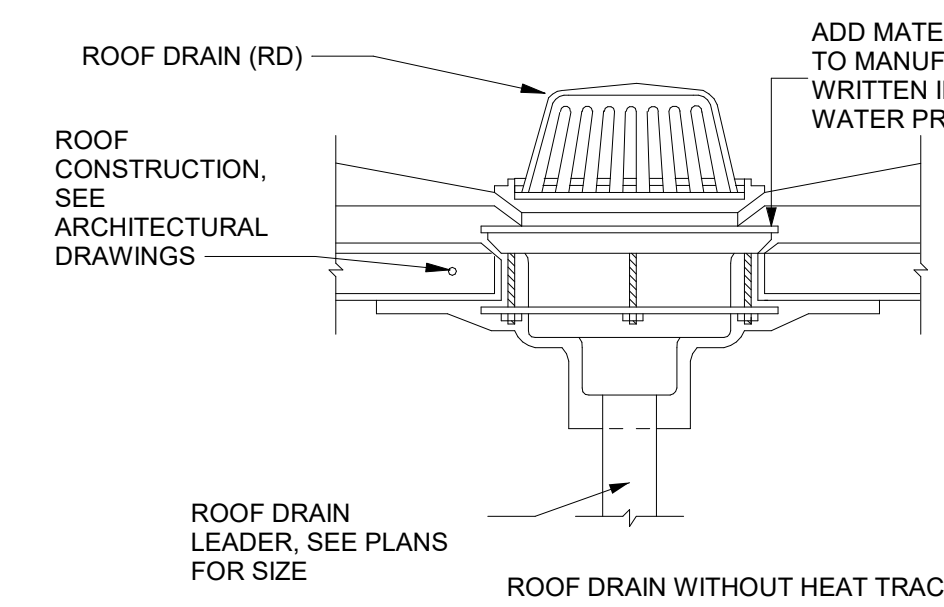
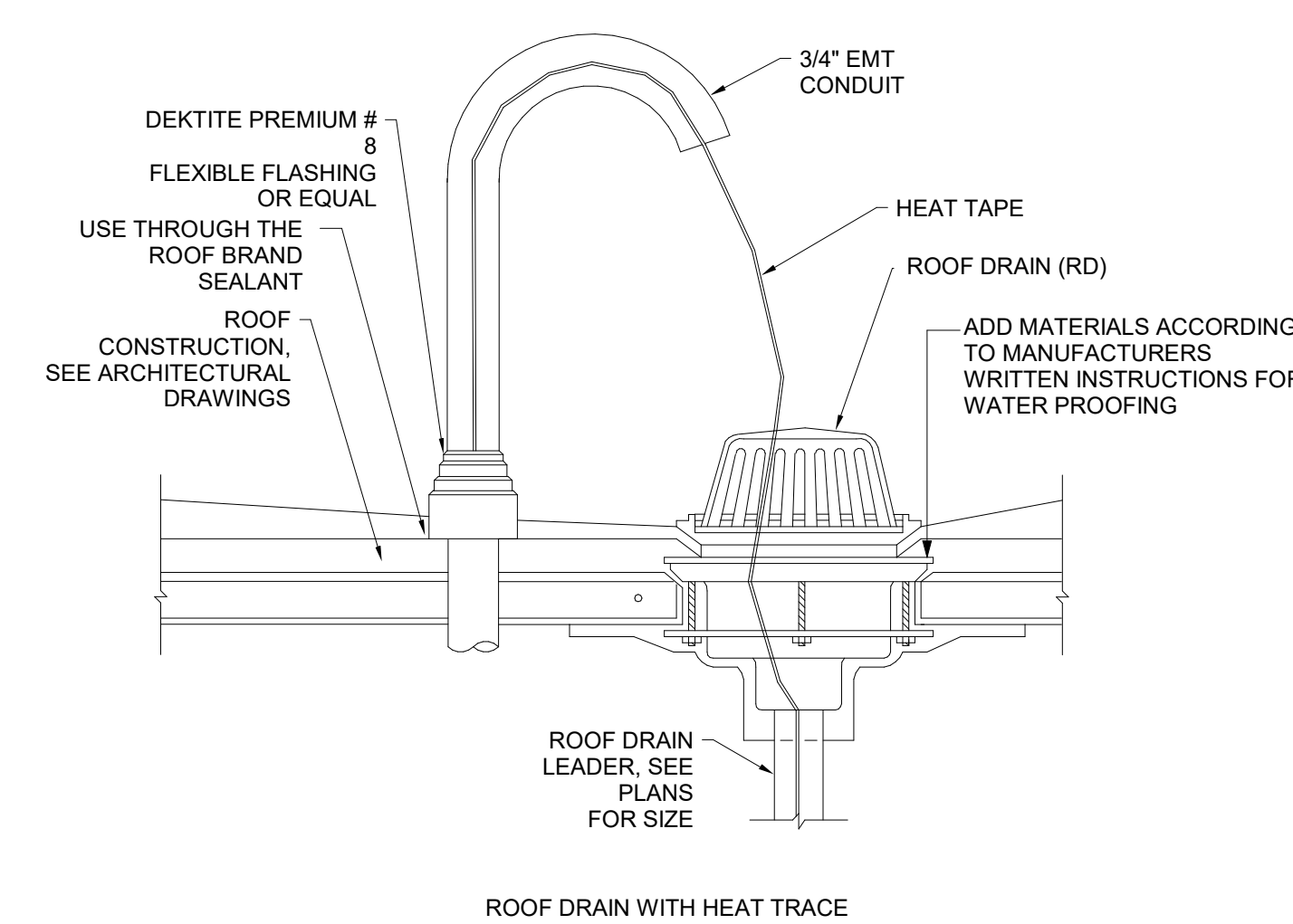
9 TRAP PRIMER DETAIL
P 5.02 NOT TO SCALE



10 SHOWER DETAIL
P 5.02 NOT TO SCALE



11 ROOF DRAIN DETAIL
P 5.02 NOT TO SCALE



- NOTES:
1. LOCATE ROOF DRAINS AT LOW POINTS OF ROOF, AS SHOWN ON PLAN.
 2. ALL ROOF FLASHING WORK AND MATERIALS ARE THE RESPONSIBILITY OF THE ROOFING CONTRACTOR. ROOFING CONTRACTOR MAY USE AN ALTERNATE FLASHING ARRANGEMENT PROVIDED IT HAS BEEN SUBMITTED TO AND APPROVED BY THE ARCHITECT.
 3. INSTALL PER MANUFACTURER'S WRITTEN INSTRUCTIONS.

CONSTRUCTION DOCUMENTS

CONSULTANTS:		ARCHITECT		Drawing Title		Project Title		Project Number		Office of Construction and Facilities Management		
 TERRASITE DESIGN 1635 DEADWOOD AVENUE RAPID CITY, SOUTH DAKOTA 57702 PH: (605) 791-1736		 ALBERTSON ENGINEERING, INC. 3202 WEST MAIN STREET, SUITE C RAPID CITY, SOUTH DAKOTA 57702 PH: (605) 343-9606		 FOURFRONT DESIGN, INC. 517 7TH STREET RAPID CITY, SOUTH DAKOTA 57701 PH: (605) 342-9470 FAX: (605) 342-2377 WWW.FOURFRONTDESIGN.COM		PLUMBING DETAILS		VA NWIHCS OMC CAMPUS - AE Construct Sterile Processing Service		16.2330.A08		25
COMPLIANCE REVIEW INCLUDED		FARRIS ENGINEERING 12700 WEST DODGE ROAD OMAHA, NEBRASKA 68154 PH: (402) 330-5900		Approved: Project Director Omaha VA Medical Center		Location 4101 Woolworth Ave #4199 Omaha, Ne 68105		Building Number		P 5.02		
Revisions:		Date		Date		Date		Checked			Dwg. 159 of 193	
								11 / 23 / 2020		RD		BM

