

**NOTE:**  
 EACH DOOR DOES NOT CONTAIN EACH DEVICE DEPICTED. SEE DOOR HARDWARE SCHEDULE AND FLOORPLANS FOR MORE INFORMATION.

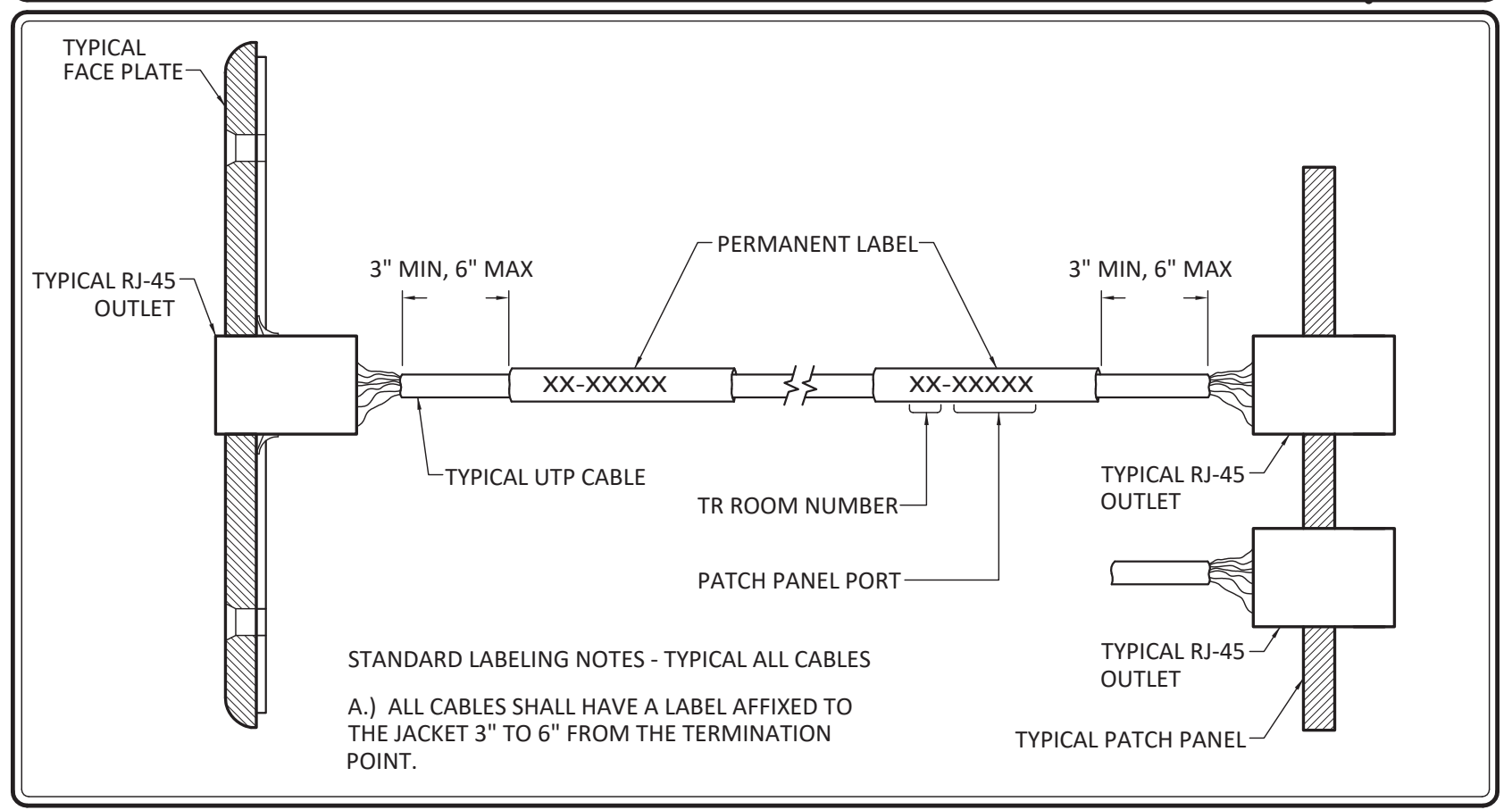
**DETAIL CODED NOTES**

- (A) SINGLE GANG MASONRY BACKBOX BY DIV 26 PROXIMITY CARD READER BY DIV. 28
- (B) DOOR CONTACT BY DIV. 28
- (C) BACKBOX AND 3/4" CONDUIT FROM BACKBOX TO ABOVE ACCESSIBLE CEILING BY DIV. 26. UTILIZE FOR DOOR CONTACT (AND MAG LOCK IF APPLICABLE)
- (D) ELECTRONIC CRASH BAR WITH OR WITHOUT REQUEST TO EXIT DEVICE BUILT-IN (IF APPLICABLE) INSTALLED BY DIV. 8 AND WIRED TO POWER SUPPLY BY DIV. 28
- (E) BACKBOX MOUNTED IN DOOR FRAME (IF ELECTRIC CRASH BAR UTILIZED) BY DIV. 26
- (F) 3/4" CONDUIT FROM BACKBOX TO ABOVE ACCESSIBLE CEILING BY DIV. 26
- (G) BACKBOX AND 3/4" CONDUIT FROM TO ABOVE ACCESSIBLE CEILING FOR DOOR STRIKE (IF APPLICABLE) BY DIV. 26
- (H) 4-SQUARE MASONRY BACKBOX BY DIV. 26, KEYPAD BY DIV. 28
- (I) ELECTRONIC CRASH BAR POWER SUPPLY INSTALLED AND WIRED TO 120V AC BY DIV. 26
- (J) REQUEST TO EXIT MOTION DETECTOR (IF APPLICABLE) BY DIV. 28. MOUNT TO CEILING CENTERED ABOVE DOORWAY WHENEVER POSSIBLE. IF CEILING MOUNT IS NOT POSSIBLE, WALL MOUNT WITH A SINGLE GANG BOX AT 108" AND EXTEND A 3/4" CONDUIT TO ABOVE ACCESSIBLE CEILING BY DIV. 26
- (K) MAGNETIC DOOR LOCK (IF APPLICABLE) BY DIV. 8 UTILIZE SAME CONDUIT AS DOOR CONTACT
- (L) SINGLE GANG MASONRY BACKBOX (IF MAG LOCK UTILIZED) BY DIV. 26 REQUEST TO EXIT BUTTON (IF MAG LOCK UTILIZED) BY DIV. 28
- (M) 3/4" CONDUIT FROM BACKBOX TO ABOVE ACCESSIBLE CEILING (IF MAG LOCK UTILIZED) BY DIV. 26
- (N) SINGLE GANG MASONRY BACKBOX BY DIV. 26 VIDEO INTERCOM BY DIV. 28
- (O) SINGLE GANG MASONRY BACKBOX AND 3/4" CONDUIT BY DIV. 26 PASS THRU KEYPAD BY DIV. 28

**DOOR OPERATOR SEQUENCE OF OPERATION:**

1) EXTERIOR DOOR OPERATOR PUSH PLATES: PUSH PLATE LOCATED ON BUILDING EXTERIOR IS TO BE WIRED THROUGH ACCESS CONTROL PANEL AND PROGRAMMED AS FOLLOWS:  
 A - WHEN ACCESS CONTROL SYSTEM IS PROGRAMMED BY TIME FUNCTION OR MANUAL OVERRIDE TO LOCK THE DOOR, THE EXTERIOR PUSH PLATE SHALL BE DEACTIVATED PREVENTING DOOR OPERATOR MOTOR FROM FUNCTIONING.  
 B - WHEN ACCESS CONTROL SYSTEM IS PROGRAMMED BY TIME FUNCTION OR MANUAL OVERRIDE TO OPEN THE DOOR, THE EXTERIOR PUSH PLATE SHALL BE ACTIVATED ALLOWING THE DOOR OPERATOR TO FUNCTION WHEN THE PLATE IS PUSHED.

2) INTERIOR DOOR OPERATOR PUSH PLATES: INTERIOR PUSH PLATES ARE TO BE WIRED THROUGH THE ACCESS CONTROL PANEL. THESE INPUTS ARE TO BE PROGRAMMED TO OPERATE SEPARATE OUTPUTS WHICH CONTROL THE LOCK RELEASE AND DOOR OPERATOR AS FOLLOWS:  
 A - WHEN ACCESS CONTROL SYSTEM IS PROGRAMMED BY TIME FUNCTION OR MANUAL OVERRIDE TO LOCK THE DOOR, PUSHING THE INTERIOR PUSH PLATE SHALL INITIATE AN INPUT TO THE ACCESS CONTROL SYSTEM WHICH SHALL THEN ACTIVATE THE APPROPRIATE OUTPUT CAUSING THE LOCK TO BE RELEASED, AND AFTER A ONE SECOND DELAY (TIME SHALL BE ADJUSTED TO MATCH LOCK RELEASE TIME PLUS 1/2 SECOND) THE OUTPUT THAT INITIATES OPERATION OF THE DOOR OPERATOR SHALL ENERGIZE.  
 B - WHEN ACCESS CONTROL SYSTEM IS PROGRAMMED BY TIME FUNCTION OR MANUAL OVERRIDE TO UNLOCK THE DOOR, PUSHING THE INTERIOR PUSH PLATE SHALL INITIATE AN INPUT TO THE ACCESS CONTROL SYSTEM WHICH SHALL THEN ACTIVATE THE APPROPRIATE OUTPUT CAUSING THE DOOR OPERATOR TO ENERGIZE.



100% CONSTRUCTION DOCUMENTS - ISSUED FOR CONSTRUCTION

FULLY SPRINKLERED

Revisions:	Date

**CONSULTANTS:**

**KJWW ENGINEERING CONSULTANTS**  
 Experience you can build on.™  
 15 Sunnen Drive, Suite 104 | St. Louis, Missouri 63143  
 314.645.1132 Fax: 314.645.1173  
 www.kjww.com

**Dynamix Engineering**  
 855 Grandview Avenue, 3rd Floor Columbus, OH 43215  
 Phone: (614) 443-1178 Fax: (614) 443-1594  
 Email: dynamix@dynamix-td.com DEL # 36076

**ARCHITECT/ENGINEERS:**

**Oculus Inc.**  
 ARCHITECTURE | STRATEGIC PLANNING | INTERIORS | MOVE MANAGEMENT  
 1 South Memorial Drive Suite 1500 Saint Louis, MO 63102  
 (p) 314.367.6100 (f) 314.367.1489 www.oculusinc.com

Drawing Title  
**TECHNOLOGY DETAILS**

Approved: Project Director

Project Title  
**FT MEADE SPS/ENDOSCOPY RENOVATION**

Location  
**113 Comanche Road Fort Meade, SD 57741**

Date  
 21 MAY 2018

Checked  
 DEL

Drawn  
 DEL

Project Number  
 568-16-101

Building Number

Drawing Number  
**T-001**

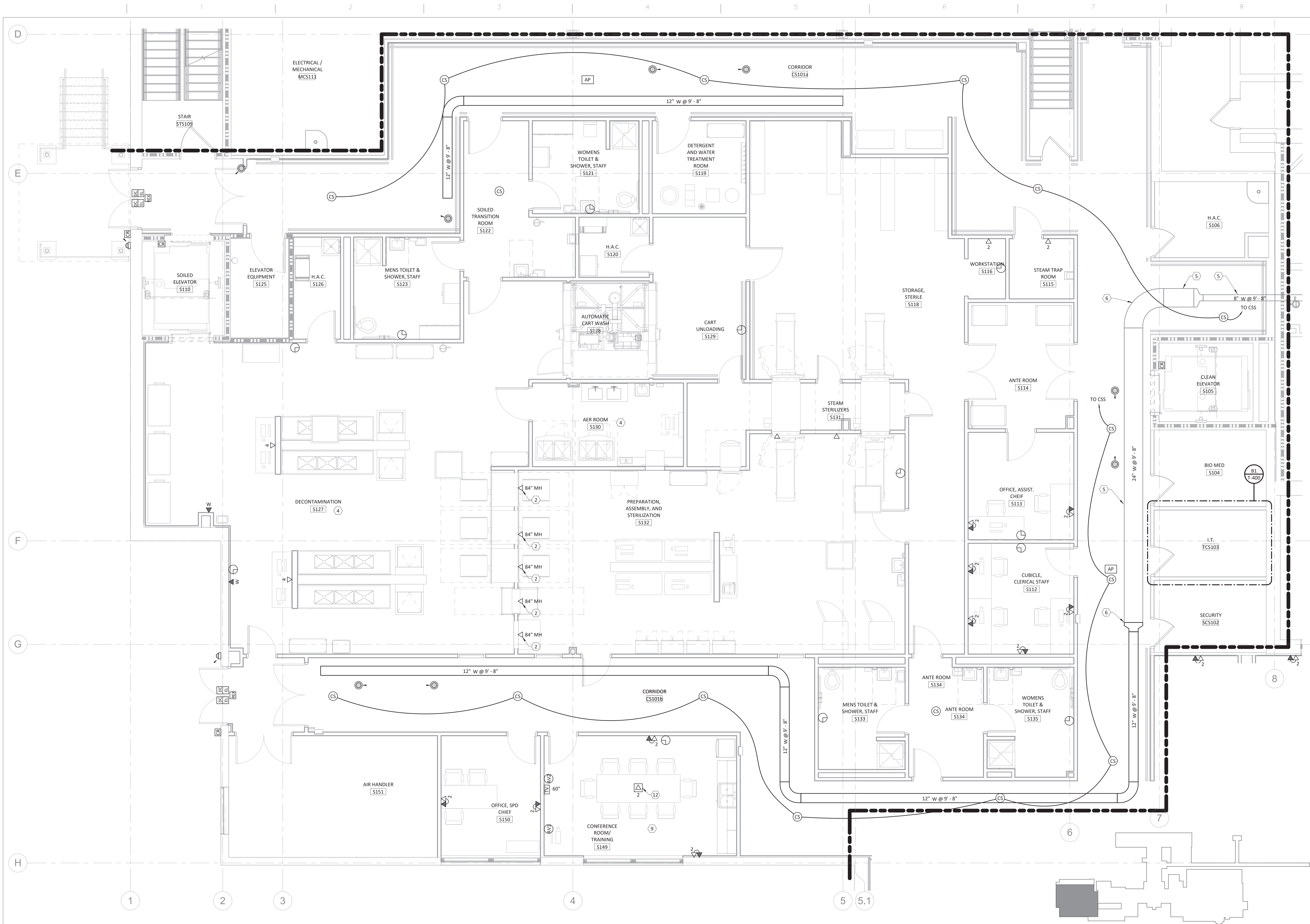
Dwg. of

**Office of Facilities Management**









- PLAN NOTES:**
- OUTLET FOR FUTURE WASHER CONNECTION.
  - THIS ROOM HAS AN INACCESSIBLE CEILING. ALL TECHNOLOGY OUTLETS/DEVICES SHALL HAVE THEIR CONDUIT PATHWAY EXTENDED TO THE CORRIDOR THAT CONTAINS THE CABLE TRAY IN A MANNER THAT KEEPS THE CABLING DISTANCE TO A MINIMUM.
  - EXISTING CABLE TRAY TO REMAIN.
  - CONNECT NEW CABLE TRAY TO EXISTING CABLE TRAY AT THIS POINT.
  - REFER TO CONFERENCE ROOM CONNECTIVITY DETAIL.
  - OUTLET MOUNTED IN A RECESSED COMBINATION POWER AND LOW VOLTAGE FLOOR BOX.

- GENERAL NOTES**
- ALL TECHNOLOGY CABLES SHALL BE HOME RUN TO ROOM TCS103.

**TECHNOLOGY LEGEND**

	CEILING MOUNTED CCTV CAMERA.
	SECURITY REQUEST TO EXIT
	SECURITY SYSTEM CARD READER.
	SECURITY ELECTRIC LOCK
	SECURITY SYSTEM DOOR CONTACT.
	SECURITY PANIC BUTTON.
	DOOR RELEASE BUTTON.
	AUDIO VISUAL INTERCOM STATION
	AUDIO VISUAL MASTER STATION
	DATA OUTLET. SUBSCRIPT = QUANTITY
	DATA/VOICE OUTLET. SUBSCRIPT = QUANTITY
	WALL PHONE OUTLET.
	DATA OUTLET (FLOOR). SUBSCRIPT = QUANTITY
	DATA OUTLET (CEILING). SUBSCRIPT = QUANTITY
	A/V WALL OUTLET FOR OWNER COMPUTER
	A/V WALL OUTLET FOR VISITOR COMPUTER
	TV OUTLET. SUBSCRIPT INDICATES VIEWING SIZE
	CEILING WIRELESS ACCESS POINT OUTLET.
	SUBSCRIPT MEANS EXISTING TO REMAIN
	CABLE TRAY SYSTEM SIZE AND MOUNTING HEIGHT.
	MULTIPLE FIRE RATED SLEEVES
	PATIENT MONITORING OUTLET
	PATIENT TRACKING BOARD OUTLET
	CENTRAL SOUND SYSTEM CEILING SPEAKER.
	CENTRAL SOUND SYSTEM WALL SPEAKER.
	ANALOG WALL CLOCK.
	NURSE CALL LAV PULL STATION
	CORRIDOR/ZONE NURSE CALL LIGHT
	NURSE CALL CODE BLUE STATION
	NURSE CALL EMERGENCY RESPONSE STATION
	NURSE CALL STAFF DUTY STATION

**100% CONSTRUCTION DOCUMENTS - ISSUED FOR CONSTRUCTION**

**FULLY SPRINKLERED**

**F1 FIRST FLOOR TECHNOLOGY PLAN - AREA A**  
1/4" = 1'-0"

**Revisions:**

Number	Date	Description

**CONSULTANTS:**

**KJWW ENGINEERING CONSULTANTS**  
Experience you can build on.<sup>SM</sup>

15 Sunnen Drive, Suite 104 | St. Louis, Missouri 63143  
314.645.1132 Fax: 314.645.1173  
www.kjww.com

**ARCHITECT/ENGINEERS:**

**Dynamix Engineering**  
855 Grandview Avenue, 3rd Floor Columbus, OH 43215  
Phone: (614) 443-1178 Fax: (614) 443-1594  
Email: dynamix@dynamix-td.com DEL # 360076

**Oculus Inc.**  
ARCHITECTURE | STRATEGIC PLANNING | INTERIORS | MOVE MANAGEMENT  
1 South Memorial Drive Suite 1500 (p) 314.367.6100 (f) 314.367.1489 Saint Louis, MO 63102 www.oculusinc.com

Drawing Title  
**FIRST FLOOR TECHNOLOGY PLAN - AREA A**

Approved: Project Director

Project Title  
**FT MEADE SPS/ENDOSCOPY RENOVATION**

Location  
**113 Comanche Road Fort Meade, SD 57741**

Date  
21 MAY 2018

Checked  
DEL

Drawn  
DEL

Drawing Number  
**T-111**

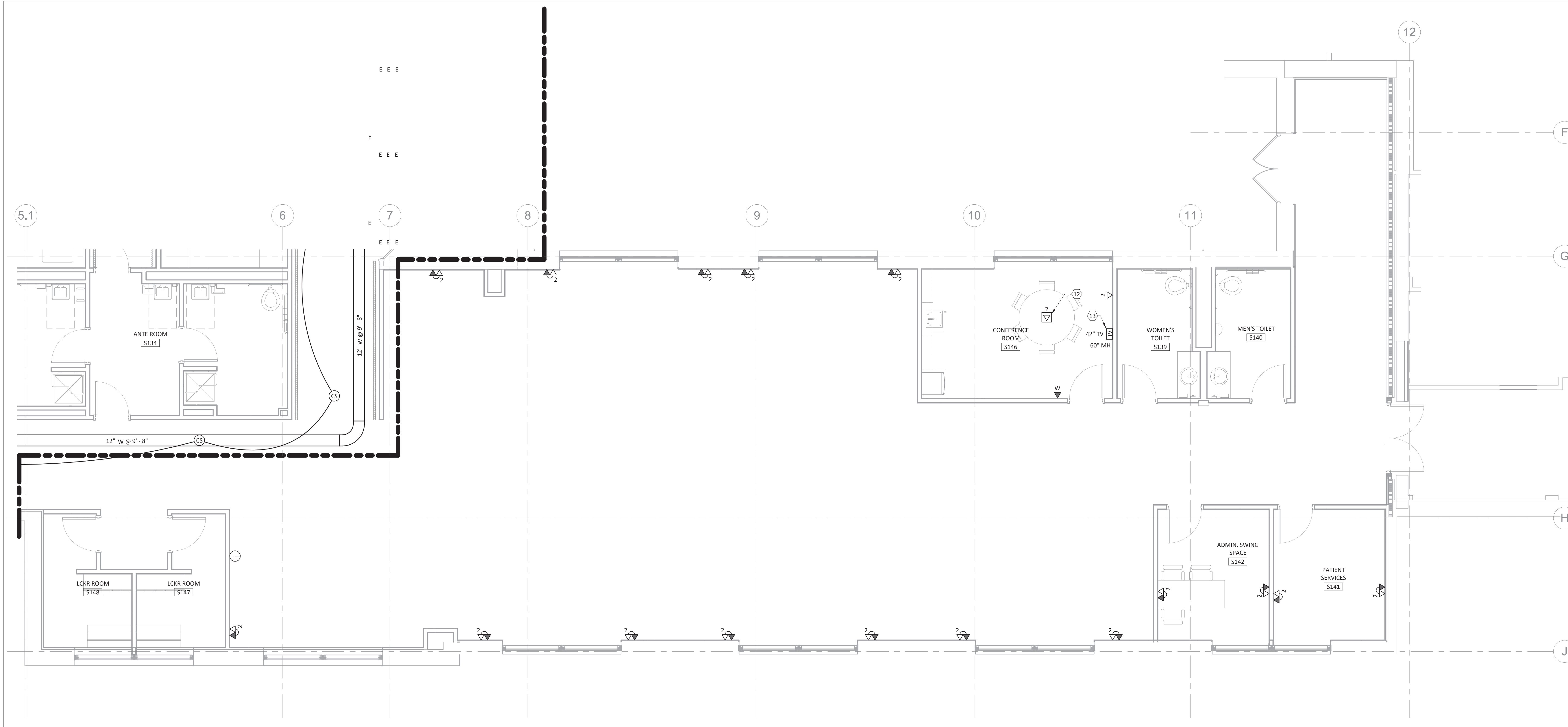
Dwg. of

Project Number  
568-16-101

Building Number

Office of Facilities Management





D1 FIRST FLOOR TECHNOLOGY PLAN - AREA B  
1/4" = 1'-0"

PLAN NOTES:	
12	OUTLET MOUNTED IN A RECESSED COMBINATION POWER AND LOW VOLTAGE FLOOR BOX.
13	REFER TO WAITING ROOM TV OUTLET DETAIL ON SHEET T-001 FOR MORE INFORMATION. HDTV AND MOUNTING BRACKET PROVIDED BY 272423 CONTRACTOR.
GENERAL NOTES	
ALL TECHNOLOGY CABLES SHALL BE HOME RUN TO ROOM TCS103.	
TECHNOLOGY LEGEND	
	CEILING MOUNTED CCTV CAMERA.
	SECURITY REQUEST TO EXIT
	SECURITY SYSTEM CARD READER.
	SECURITY ELECTRIC LOCK
	SECURITY SYSTEM DOOR CONTACT.
	SECURITY PANIC BUTTON.
	DOOR RELEASE BUTTON.
	AUDIO VISUAL INTERCOM STATION
	AUDIO VISUAL MASTER STATION
	DATA OUTLET. SUBSCRIPT = QUANTITY
	DATA/VOICE OUTLET. SUBSCRIPT = QUANTITY
	WALL PHONE OUTLET.
	DATA OUTLET (FLOOR). SUBSCRIPT = QUANTITY
	DATA OUTLET (CEILING). SUBSCRIPT = QUANTITY
	A/V WALL OUTLET FOR OWNER COMPUTER
	A/V WALL OUTLET FOR VISITOR COMPUTER
	TV OUTLET. SUBSCRIPT INDICATES VIEWING SIZE
	CEILING WIRELESS ACCESS POINT OUTLET.
	SUBSCRIPT MEANS EXISTING TO REMAIN
	CABLE TRAY SYSTEM SIZE AND MOUNTING HEIGHT.
	MULTIPLE FIRE RATED SLEEVES
	PATIENT MONITORING OUTLET
	PATIENT TRACKING BOARD OUTLET
	CENTRAL SOUND SYSTEM CEILING SPEAKER.
	CENTRAL SOUND SYSTEM WALL SPEAKER.
	ANALOG WALL CLOCK.
	NURSE CALL LAV PULL STATION
	CORRIDOR/ZONE NURSE CALL LIGHT
	NURSE CALL CODE BLUE STATION
	NURSE CALL EMERGENCY RESPONSE STATION
	NURSE CALL STAFF DUTY STATION

100% CONSTRUCTION DOCUMENTS - ISSUED FOR CONSTRUCTION

FULLY SPRINKLERED

Revisions:	Date

**CONSULTANTS:**

**KJWW**  
ENGINEERING CONSULTANTS  
Experience you can build on.™

15 Sunnen Drive, Suite 104 | St. Louis, Missouri 63143  
314.645.1132 Fax: 314.645.1173  
www.kjww.com

**Dynamix**  
Engineering

855 Grandview Avenue, 3rd Floor Columbus, OH 43215  
Phone: (614) 443-1178 Fax: (614) 443-1594  
Email: dynamix@dynamix-ltd.com  
DEL # 160076

**ARCHITECT/ENGINEERS:**

MADE E-62658  
MONTGOMERY E-68852  
GRIFFIN E-57049

**Oculus Inc.**  
ARCHITECTURE | STRATEGIC PLANNING | INTERIORS | MOVE MANAGEMENT

1 South Memorial Drive Suite 1500 Saint Louis, MO 63102 (p) 314.367.6100 (f) 314.367.1489 www.oculusinc.com

**FIRST FLOOR TECHNOLOGY PLAN - AREA B**

Approved: Project Director

**FT MEADE SPS/ENDOSCOPY RENOVATION**

Location: 113 Comanche Road Fort Meade, SD 57741

Date	Checked	Drawn
21 MAY 2018	DEL	DEL

Dwg. of

Project Number: 568-16-101  
Building Number:  
Drawing Number: **T-112**

**Office of Facilities Management**





D1 SECOND FLOOR TECHNOLOGY PLAN - AREA A  
1/4" = 1'-0"

- PLAN NOTES:**
- 3 MOUNT OUTLETS ON ROOM.
  - 10 PROVIDE NEW HDTV CEILING MOUNT WITH ISOLATION VIBRATION PAD. PROVIDE NEW HDTV. COMPLETE CONNECTION TO EXISTING VIDEO DISTRIBUTION SYSTEM. SEE SPECIFICATION 272423 FOR MORE INFORMATION.
  - 11 PROVIDE (1) RG6 CABLE AND (1) CAT6 CABLE TO NEAREST TR. COORDINATE FINAL MOUNTING HEIGHT WITH ARCHITECTURAL ELEVATIONS.

**GENERAL NOTES**

ALL TECHNOLOGY CABLES SHALL BE HOME RUN TO ROOM TCS103 UNLESS NOTED OTHERWISE.

**TECHNOLOGY LEGEND**

	CEILING MOUNTED CCTV CAMERA.
	SECURITY REQUEST TO EXIT
	SECURITY SYSTEM CARD READER.
	SECURITY ELECTRIC LOCK
	SECURITY SYSTEM DOOR CONTACT.
	SECURITY PANIC BUTTON.
	DOOR RELEASE BUTTON.
	AUDIO VISUAL INTERCOM STATION
	AUDIO VISUAL MASTER STATION
	DATA OUTLET. SUBSCRIPT = QUANTITY
	DATA/VOICE OUTLET. SUBSCRIPT = QUANTITY
	WALL PHONE OUTLET.
	DATA OUTLET (FLOOR). SUBSCRIPT = QUANTITY
	DATA OUTLET (CEILING). SUBSCRIPT = QUANTITY
	A/V WALL OUTLET FOR OWNER COMPUTER
	A/V WALL OUTLET FOR VISITOR COMPUTER
	TV OUTLET. SUBSCRIPT INDICATES VIEWING SIZE
	CEILING WIRELESS ACCESS POINT OUTLET.
	SUBSCRIPT MEANS EXISTING TO REMAIN
	CABLE TRAY SYSTEM SIZE AND MOUNTING HEIGHT.
	MULTIPLE FIRE RATED SLEEVES
	PATIENT MONITORING OUTLET
	PATIENT TRACKING BOARD OUTLET
	CENTRAL SOUND SYSTEM CEILING SPEAKER.
	CENTRAL SOUND SYSTEM WALL SPEAKER.
	ANALOG WALL CLOCK.
	NURSE CALL LAV PULL STATION
	CORRIDOR/ZONE NURSE CALL LIGHT
	NURSE CALL CODE BLUE STATION
	NURSE CALL EMERGENCY RESPONSE STATION
	NURSE CALL STAFF DUTY STATION

100% CONSTRUCTION DOCUMENTS - ISSUED FOR CONSTRUCTION

FULLY SPRINKLERED

**Revisions:**

No.	Date	Description

**CONSULTANTS:**

**KJWW**  
ENGINEERING CONSULTANTS  
Experience you can build on.™

15 Sunnen Drive, Suite 104 | St. Louis, Missouri 63143  
314.645.1132 Fax: 314.645.1173  
www.kjww.com

**Dynamix**  
Engineering

855 Grandview Avenue, 3rd Floor Columbus, OH 43215  
Phone: (614) 443-1178 Fax: (614) 443-1594  
Email: dynamix@dynamix-td.com  
DEL # 360076

**ARCHITECT/ENGINEERS:**

MADE E-22658  
MATTHEW E. GRIFFIN E-57049

**Oculus Inc.**  
ARCHITECTURE | STRATEGIC PLANNING | INTERIORS | MOVE MANAGEMENT

1 South Memorial Drive Suite 1500 Saint Louis, MO 63102 (p) 314.367.6100 (f) 314.367.1489 www.oculusinc.com

Drawing Title  
**SECOND FLOOR TECHNOLOGY PLAN - AREA A**

Approved: Project Director

Project Title  
**FT MEADE SPS/ENDOSCOPY RENOVATION**

Location  
**113 Comanche Road Fort Meade, SD 57741**

Date  
21 MAY 2018

Checked  
DEL

Drawn  
DEL

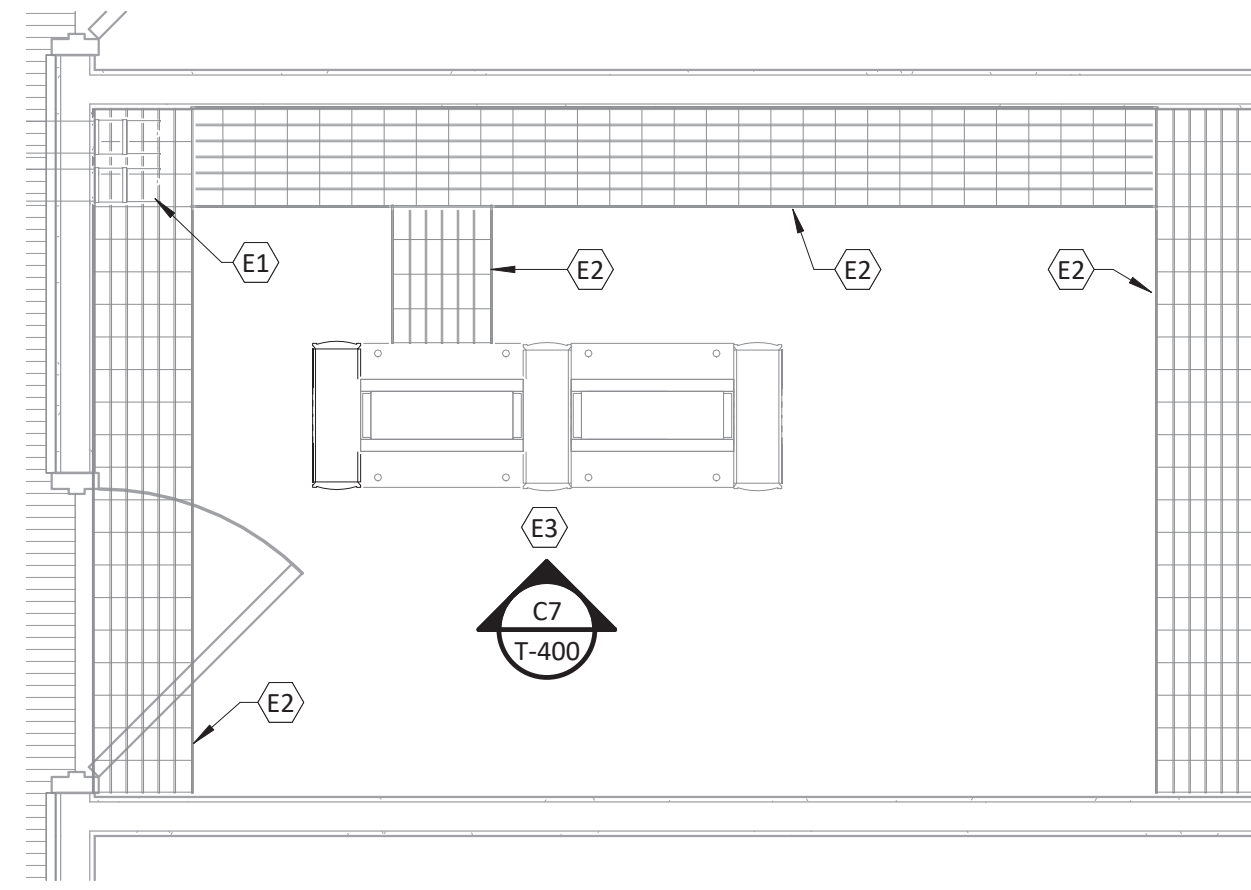
Project Number  
568-16-101

Building Number

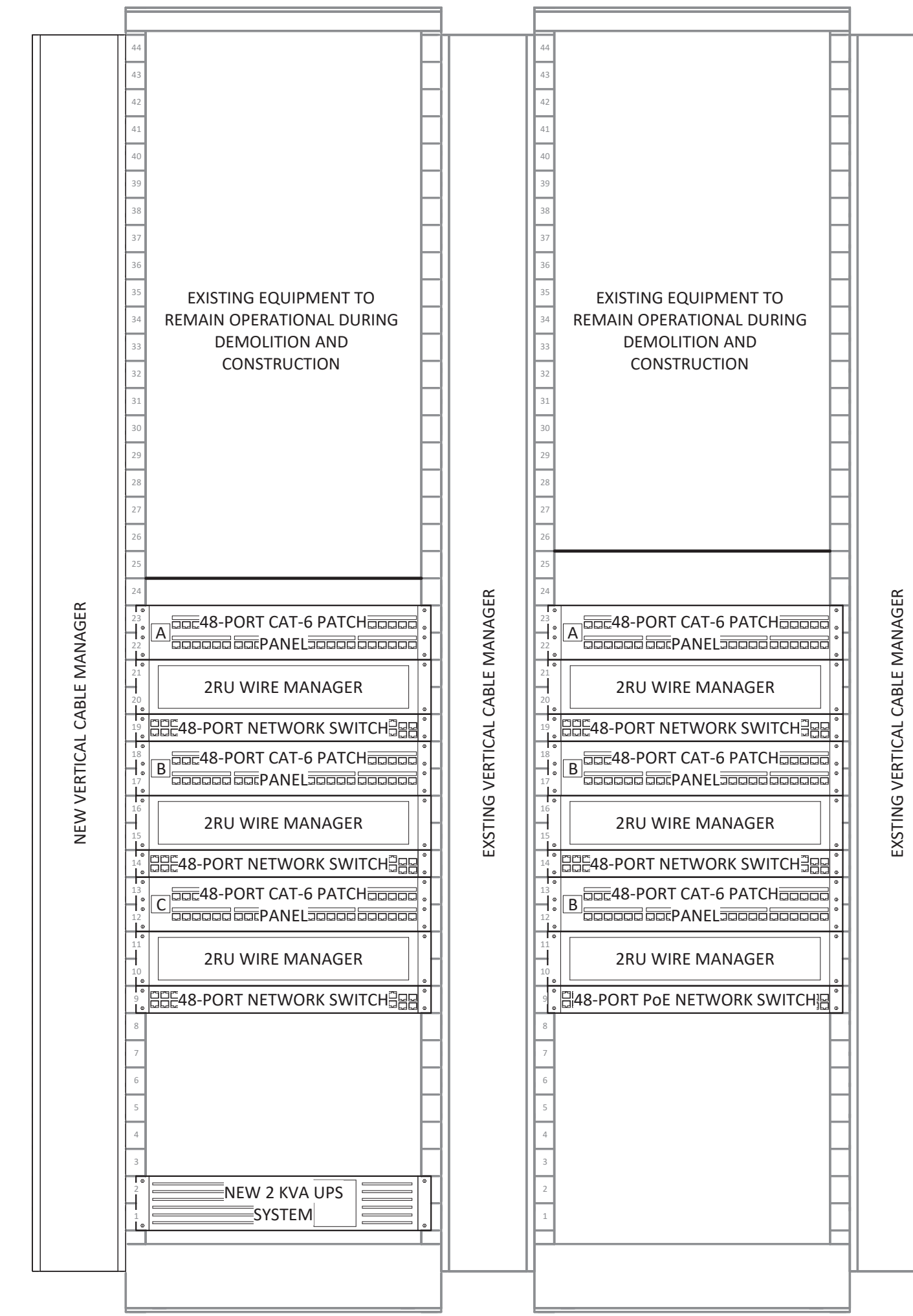
Drawing Number  
**T-121**

Dwg. of

**Office of Facilities Management**



**B1** EXISTING TECHNOLOGY ROOM TCS103 - FOR REFERENCE ONLY  
1/2" = 1'-0"



**C7** EXISTING FIRST FLOOR TECHNOLOGY RACKS  
1 1/2" = 1'-0"

**PLAN NOTES:**

- E1 EXISTING WALL SLEEVES.
- E2 EXISTING 12" WIRE MESH CABLE TRAY.
- E3 EXISTING DATA RACKS WITH VERTICAL WIRE MANAGEMENT.

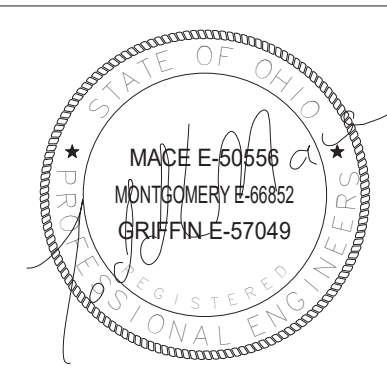
100% CONSTRUCTION DOCUMENTS - ISSUED FOR CONSTRUCTION

FULLY SPRINKLERED

**CONSULTANTS:**

**KJWW** ENGINEERING CONSULTANTS  
Experience you can build on.<sup>®</sup>  
15 Sunnen Drive, Suite 104 | St. Louis, Missouri 63143  
314.645.1132 Fax: 314.645.1173  
www.kjww.com

**Dynamix** Engineering  
855 Grandview Avenue, 3rd Floor Columbus, OH 43215  
Phone: (614) 443-1178 Fax: (614) 443-1594  
Email: dynamix@dynamix-lltd.com  
DEL # 360076



**ARCHITECT/ENGINEERS:**

**Oculus Inc.**  
ARCHITECTURE | STRATEGIC PLANNING | INTERIORS | MOVE MANAGEMENT  
1 South Memorial Drive Suite 1500 Saint Louis, MO 63102  
(p) 314.367.6100 (f) 314.367.1489 www.oculusinc.com

Drawing Title  
**TECHNOLOGY ROOM RACK ELEVATIONS**

Approved: Project Director

Project Title  
**FT MEADE SPS/ENDOSCOPY RENOVATION**

Location  
**113 Comanche Road Fort Meade, SD 57741**

Date  
21 MAY 2018

Checked  
DEL

Drawn  
DEL

Project Number  
568-16-101

Building Number

Drawing Number  
**T-400**

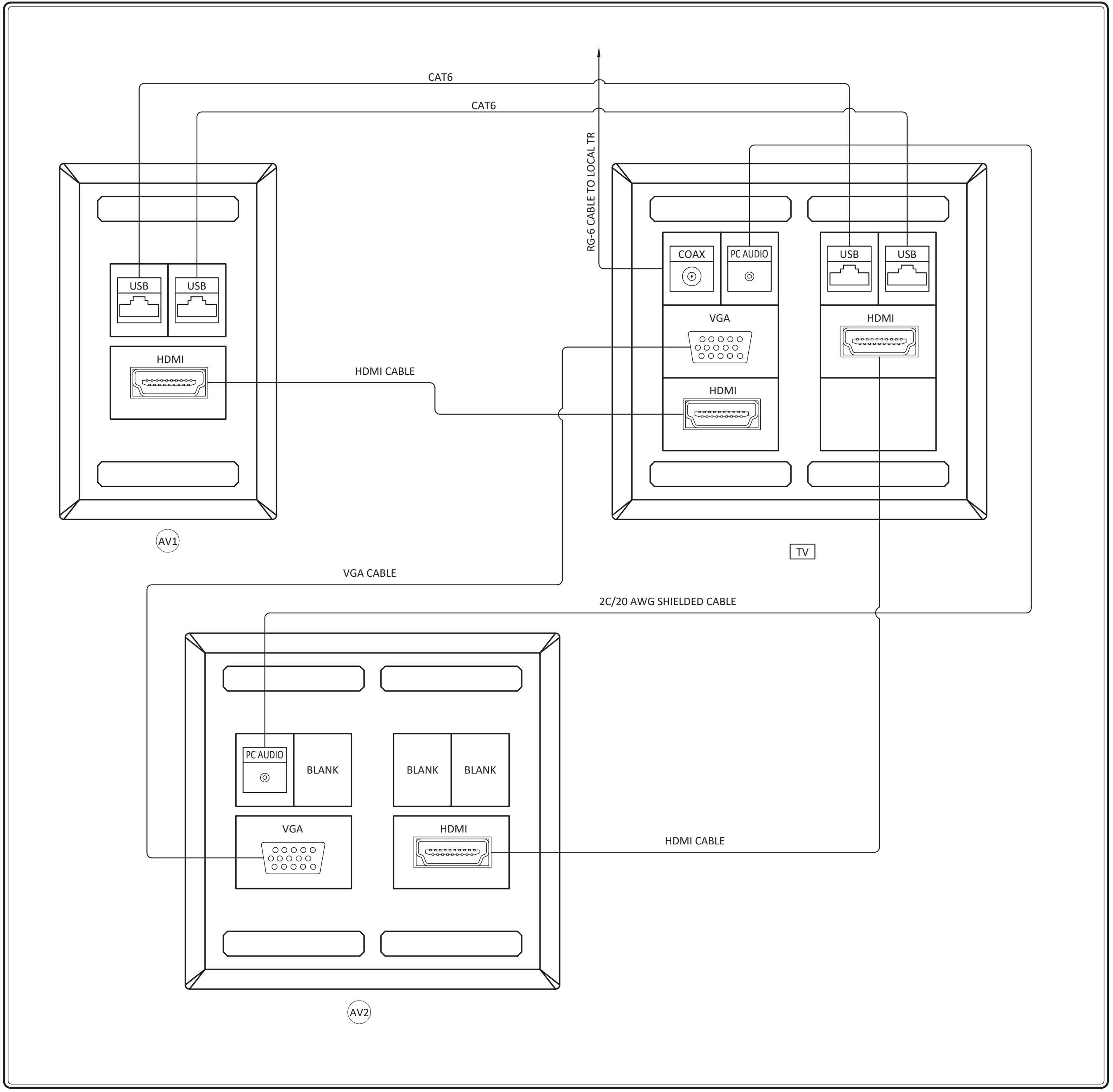
Dwg. of

**Office of Facilities Management**

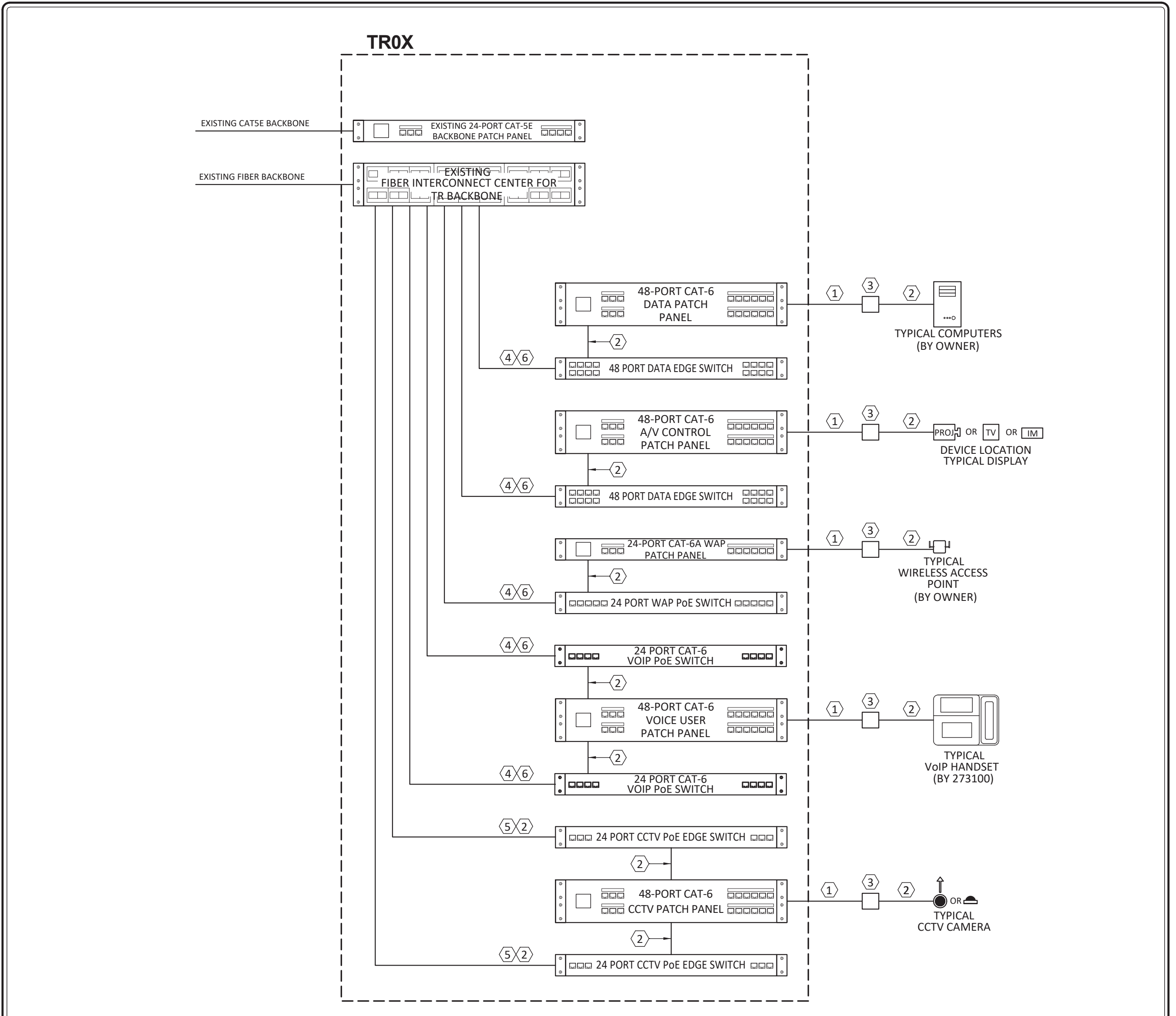




**CONFERENCE ROOM CONNECTIVITY DETAIL**



**DATA NETWORK/VoIP/WLAN/PoE CCTV ELECTRONICS SCHEMATIC**



- DETAIL CODED NOTES**
- HORIZONTAL DATA CABLING.
  - COPPER PATCH CABLE(S).
  - TYPICAL TECHNOLOGY OUTLET.
  - 1G BASE-SX CONNECTION.
  - 1G BASE-TX CONNECTION.
  - FIBER PATCH CORDS.
  - 100GBASE-TX CONNECTION.

- DETAIL GENERAL NOTES**
- A. ALL PATCH PANELS, EDGE SWITCHES, AND DEVICES ARE TYPICAL. SEE RACK ELEVATION DRAWINGS FOR QUANTITIES OF EQUIPMENT.
- B. THE CONTRACTOR IS REQUIRED TO PROVIDE ALL COPPER & FIBER PATCH CORDS.
- C. THE CONTRACTOR IS REQUIRED TO PROVIDE ALL PROGRAMMING OF NETWORK ELECTRONICS FOR A COMPLETE, FULLY-FUNCTIONAL SYSTEM. THIS SHALL INCLUDE ALL OWNER VLAN REQUIREMENTS.

- PATCH CABLE LENGTH NOTES**
- A. PROVIDE 1' LENGTH FROM PATCH PANEL TO NETWORK SWITCH PORT.
- B. PROVIDE 3' LENGTH FROM TECHNOLOGY OUTLET TO TV/PROJECTOR.
- C. PROVIDE 10' LENGTH FROM TECHNOLOGY OUTLET TO COMPUTERS AND PHONES.
- D. PROVIDE LENGTH AS NECESSARY TO WIRELESS ACCESS POINTS AND CCTV CAMERAS.
- E. PROVIDE LENGTH AS REQUIRED FOR 10GBASE-TX COPPER CONNECTIONS.
- F. PROVIDE LENGTHS AS REQUIRED FOR 10GBASE-SX FIBER CONNECTIONS.

**100% CONSTRUCTION DOCUMENTS - ISSUED FOR CONSTRUCTION**

**FULLY SPRINKLERED**

Scale indicators on the left margin:
 

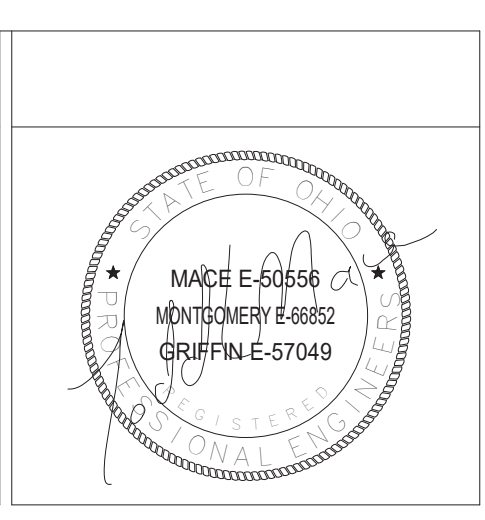
- Three inches = one foot
- One and one half inches = one foot
- One inch = one foot
- Three quarters inch = one foot
- One half inch = one foot
- Three eighths inch = one foot
- One quarter inch = one foot
- One eighth inch = one foot

Revisions:	Date

**CONSULTANTS:**

**KJWW ENGINEERING CONSULTANTS**  
Experience you can build on.™  
15 Sunnen Drive, Suite 104 | St. Louis, Missouri 63143  
314.645.1132 Fax: 314.645.1173 | www.kjww.com

**Dynamix Engineering**  
855 Grandview Avenue, 3rd Floor Columbus, OH 43215  
Phone: (614) 443-1178 Fax: (614) 443-1594  
Email: dynamix@dynamix-td.com DEL # 160076



**ARCHITECT/ENGINEERS:**

**Oculus Inc.**  
ARCHITECTURE | STRATEGIC PLANNING | INTERIORS | MOVE MANAGEMENT  
1 South Memorial Drive Suite 1500 Saint Louis, MO 63102  
(p) 314.367.6100 (f) 314.367.1489 www.oculusinc.com

Drawing Title  
**TECHNOLOGY DETAILS**

Approved: Project Director

Project Title  
**FT MEADE SPS/ENDOSCOPY RENOVATION**

Location  
**113 Comanche Road Fort Meade, SD 57741**

Date  
21 MAY 2018

Checked  
DEL

Drawn  
DEL

Project Number  
568-16-101

Building Number

Drawing Number  
**T-501**

Dwg. of

**Office of Facilities Management**

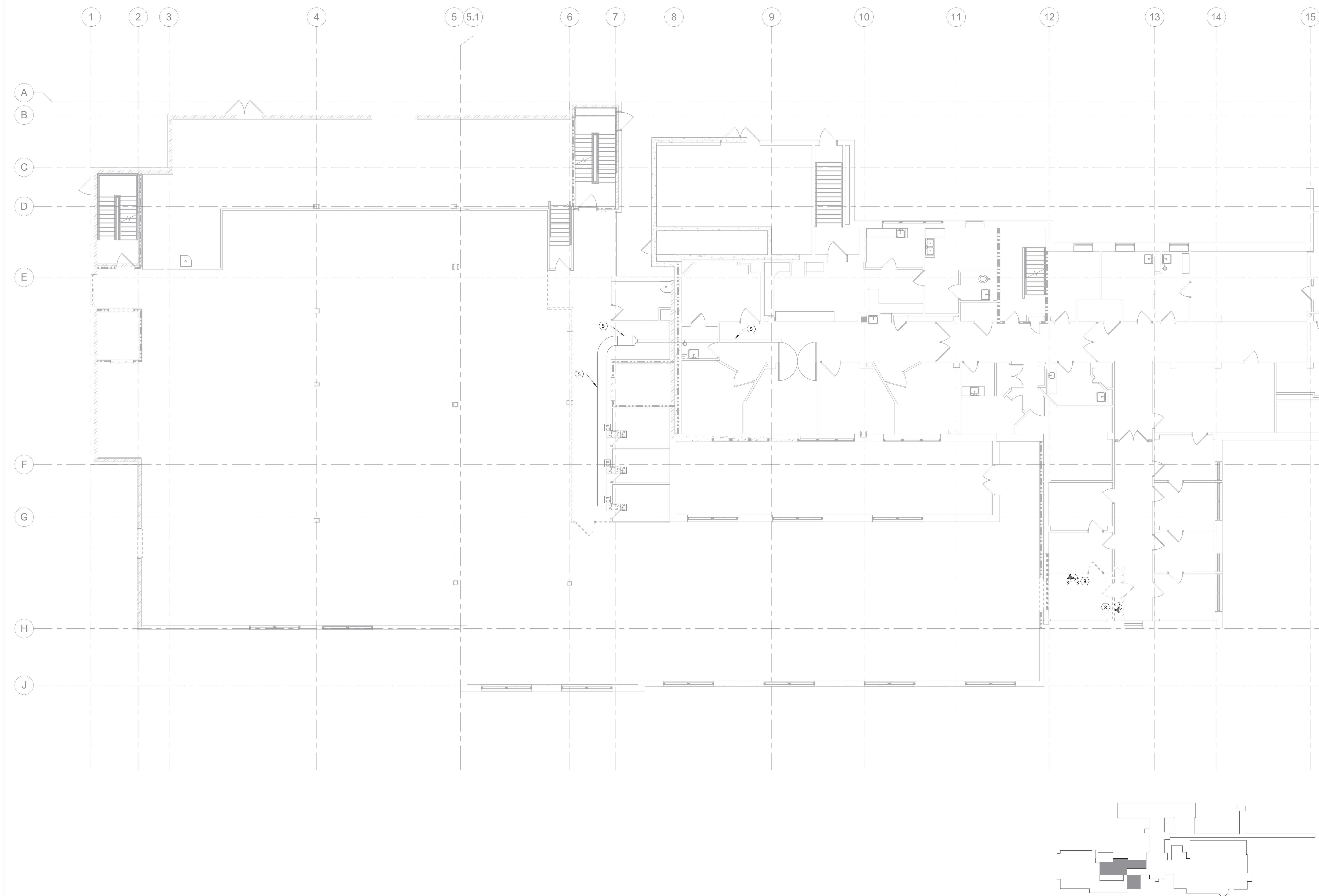


**PLAN NOTES:**  
 5 EXISTING CABLE TRAY TO REMAIN.  
 8 DEMO CABLES FROM DEVICE BACK TO SOURCE.  
 CONTRACTOR TO TONE CABLE SOURCE LOCATION PRIOR TO REMOVAL.

TECHNOLOGY LEGEND	
	CEILING MOUNTED CCTV CAMERA.
	SECURITY REQUEST TO EXIT
	SECURITY SYSTEM CARD READER.
	SECURITY ELECTRIC LOCK
	SECURITY SYSTEM DOOR CONTACT.
	SECURITY PANIC BUTTON.
	DOOR RELEASE BUTTON.
	AUDIO VISUAL INTERCOM STATION
	AUDIO VISUAL MASTER STATION
	DATA OUTLET. SUBSCRIPT = QUANTITY
	DATA/VOICE OUTLET. SUBSCRIPT = QUANTITY
	WALL PHONE OUTLET.
	DATA OUTLET (FLOOR). SUBSCRIPT = QUANTITY
	DATA OUTLET (CEILING). SUBSCRIPT = QUANTITY
	A/V WALL OUTLET FOR OWNER COMPUTER
	A/V WALL OUTLET FOR VISITOR COMPUTER
	TV OUTLET. SUBSCRIPT INDICATES VIEWING SIZE
	CEILING WIRELESS ACCESS POINT OUTLET.
	SUBSCRIPT MEANS EXISTING TO REMAIN
	CABLE TRAY SYSTEM SIZE AND MOUNTING HEIGHT.
	MULTIPLE FIRE RATED SLEEVES
	PATIENT MONITORING OUTLET
	PATIENT TRACKING BOARD OUTLET
	CENTRAL SOUND SYSTEM CEILING SPEAKER.
	CENTRAL SOUND SYSTEM WALL SPEAKER.
	ANALOG WALL CLOCK.
	NURSE CALL LAV PULL STATION
	CORRIDOR/ZONE NURSE CALL LIGHT
	NURSE CALL CODE BLUE STATION
	NURSE CALL EMERGENCY RESPONSE STATION
	NURSE CALL STAFF DUTY STATION

100% CONSTRUCTION DOCUMENTS - ISSUED FOR CONSTRUCTION

FULLY SPRINKLERED



**F1 FIRST FLOOR TECHNOLOGY DEMOLITION PLAN**  
 1/8" = 1'-0"

Revisions:	Date

**CONSULTANTS:**

**KJWW**  
ENGINEERING CONSULTANTS  
Experience you can build on.®

15 Sunnen Drive, Suite 104 | St. Louis, Missouri 63143  
314.645.1132 Fax: 314.645.1173  
www.kjww.com

**Dynamix**  
Engineering

855 Grandview Avenue, 3rd Floor Columbus, OH 43215  
Phone: (614) 443-1178 Fax: (614) 443-1594  
Email: dynamix@dynamix-ltd.com  
DEL # 160076

**ARCHITECT/ENGINEERS:**

MADE E-52658  
MONTGOMERY E-6882  
GRIFFIN E-57049

**Oculus Inc.**  
ARCHITECTURE | STRATEGIC PLANNING | INTERIORS | MOVE MANAGEMENT

1 South Memorial Drive Suite 1500 Saint Louis, MO 63102 (p) 314.367.6100 (f) 314.367.1489 www.oculusinc.com

**FIRST FLOOR TECHNOLOGY DEMOLITION PLAN**

Approved: Project Director

**PROJECT TITLE**  
**FT MEADE SPS/ENDOSCOPY RENOVATION**

Location  
**113 Comanche Road Fort Meade, SD 57741**

Date  
 21 MAY 2018

Checked  
 DEL

Drawn  
 DEL

Project Number  
 568-16-101

Building Number

Drawing Number  
**TD-101**

Dwg. of

**Office of Facilities Management**



**PLAN NOTES:**

**TECHNOLOGY LEGEND**

	CEILING MOUNTED CCTV CAMERA.
	SECURITY REQUEST TO EXIT
	SECURITY SYSTEM CARD READER.
	SECURITY ELECTRIC LOCK
	SECURITY SYSTEM DOOR CONTACT.
	SECURITY PANIC BUTTON.
	DOOR RELEASE BUTTON.
	AUDIO VISUAL INTERCOM STATION
	AUDIO VISUAL MASTER STATION
	DATA OUTLET. SUBSCRIPT = QUANTITY
	DATA/VOICE OUTLET. SUBSCRIPT = QUANTITY
	WALL PHONE OUTLET.
	DATA OUTLET (FLOOR). SUBSCRIPT = QUANTITY
	DATA OUTLET (CEILING). SUBSCRIPT = QUANTITY
	A/V WALL OUTLET FOR OWNER COMPUTER
	A/V WALL OUTLET FOR VISITOR COMPUTER
	TV OUTLET. SUBSCRIPT INDICATES VIEWING SIZE
	CEILING WIRELESS ACCESS POINT OUTLET.
	"E" SUBSCRIPT MEANS EXISTING TO REMAIN
	CABLE TRAY SYSTEM SIZE AND MOUNTING HEIGHT.
	MULTIPLE FIRE RATED SLEEVES
	PATIENT MONITORING OUTLET
	PATIENT TRACKING BOARD OUTLET
	CENTRAL SOUND SYSTEM CEILING SPEAKER.
	CENTRAL SOUND SYSTEM WALL SPEAKER.
	ANALOG WALL CLOCK.
	NURSE CALL LAV PULL STATION
	CORRIDOR/ZONE NURSE CALL LIGHT
	NURSE CALL CODE BLUE STATION
	NURSE CALL EMERGENCY RESPONSE STATION
	NURSE CALL STAFF DUTY STATION

REMOVE ALL UTP CABLES FROM OUTLET TO SOURCE.  
 REMOVE ALL NURSE CALL EQUIPMENT AND CABLES FROM DEVICE TO SOURCE.  
 REMOVE ALL HDTV MONITORS, MONITOR MOUNTS, AND TURN OVER TO OWNER FOR RE-INSTALLATION.  
 REMOVE ALL UTP CABLE FROM SURGERY EQUIPMENT TO SOURCE.  
 REMOVE ALL COAX CABLE FROM DEVICE BACK TO SOURCE.  
 REMOVE WALL CLOCKS AND TURN OVER TO OWNER.

TECHNOLOGY CLOSET

**100% CONSTRUCTION DOCUMENTS - ISSUED FOR CONSTRUCTION**

**FULLY SPRINKLERED**

**F1 SECOND FLOOR TECHNOLOGY DEMOLITION PLAN**  
 1/8" = 1'-0"

Revisions:	Date

**CONSULTANTS:**

**KJWW ENGINEERING CONSULTANTS**  
 Experience you can build on.<sup>SM</sup>

15 Sunnen Drive, Suite 104 | St. Louis, Missouri 63143  
 314.645.1132 Fax: 314.645.1173 | www.kjww.com

**Dynamix Engineering**  
 855 Grandview Avenue, 3rd Floor Columbus, OH 43215  
 Phone: (614) 443-1178 Fax: (614) 443-1594  
 Email: dynamix@dynamix-td.com DEL #160076

**ARCHITECT/ENGINEERS:**

**Oculus Inc.**  
 ARCHITECTURE | STRATEGIC PLANNING | INTERIORS | MOVE MANAGEMENT

1 South Memorial Drive Suite 1500 Saint Louis, MO 63102 (p) 314.367.6100 (f) 314.367.1489 www.oculusinc.com

Drawing Title  
**SECOND FLOOR TECHNOLOGY DEMOLITION PLAN**

Approved: Project Director

Project Title  
**FT MEADE SPS/ENDOSCOPY RENOVATION**

Location  
**113 Comanche Road Fort Meade, SD 57741**

Date  
 21 MAY 2018

Checked  
 DEL

Drawn  
 DEL

Project Number  
 568-16-101

Building Number

Drawing Number  
**TD-102**

Dwg. of

**Office of Facilities Management**