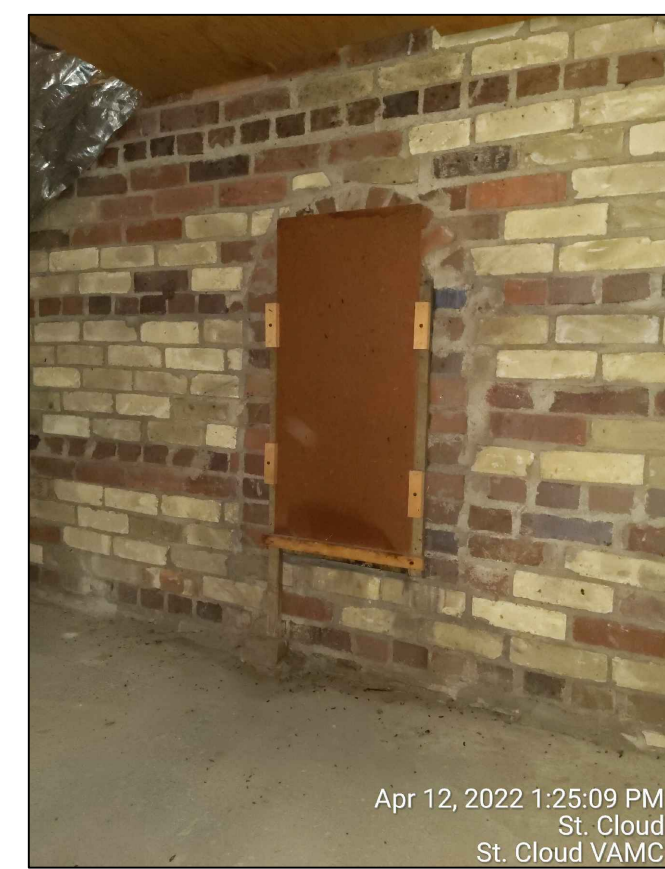


Sprinkler Pipe remains

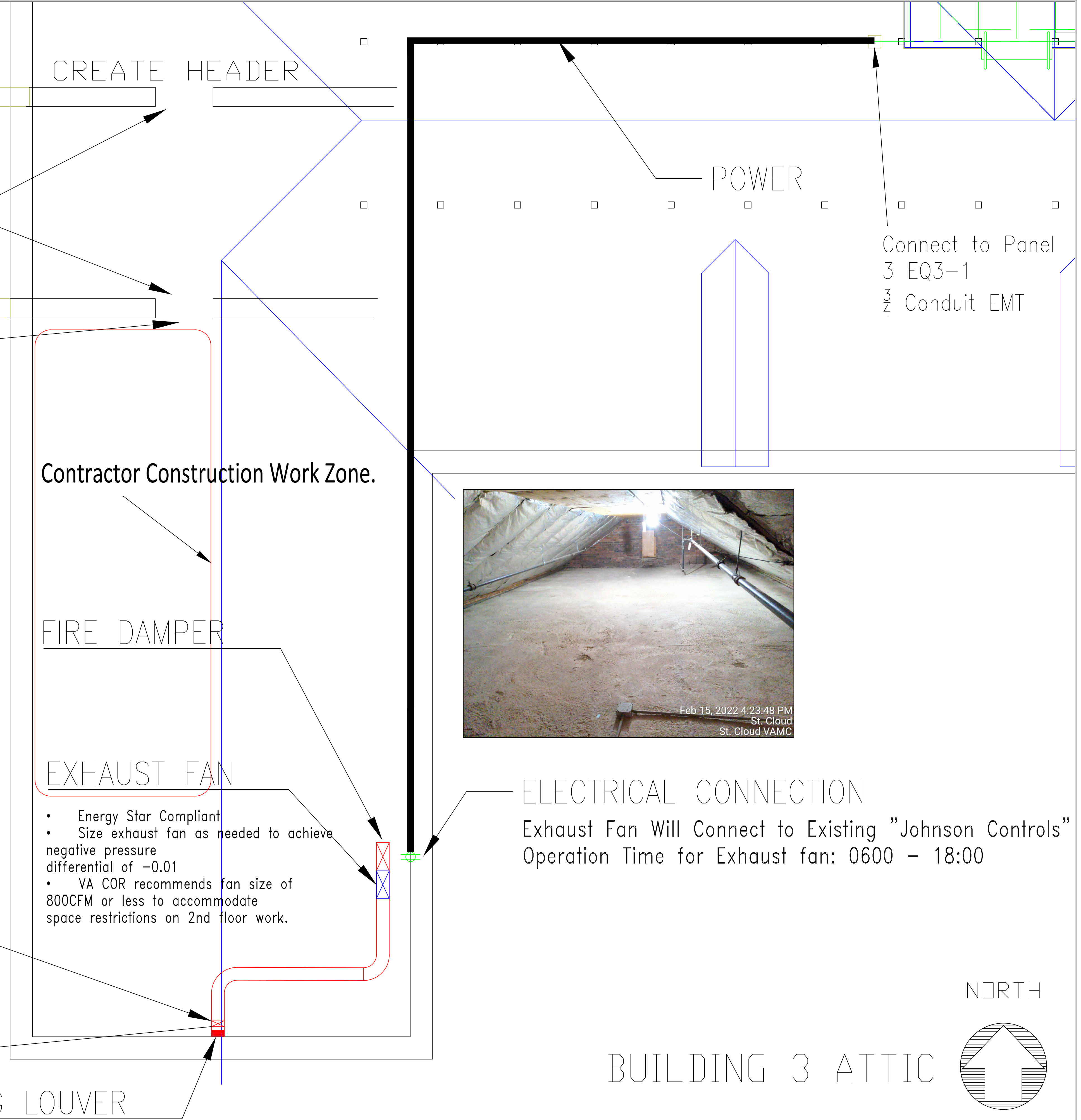


Sprinkler Pipe remains

INSTALL EXHAUST FAN DENTAL LAB PROJECT #656-22-348



CREATE EXHAUST DUCT HOUSING



CREATE HEADER

Performance Spec:

- Contractor to field coordinate and field verify, typical Header Detail.

CREATE ACCESS

Create header and 3' x 6' access way through bearing dormer

Contractor Construction Work Zone.

FIRE DAMPER

EXHAUST FAN

- Energy Star Compliant
- Size exhaust fan as needed to achieve negative pressure differential of -0.01
- VA COR recommends fan size of 800CFM or less to accommodate space restrictions on 2nd floor work.

EXISTING LOUVER

POWER

Connect to Panel 3 EQ3-1
3/4 Conduit EMT

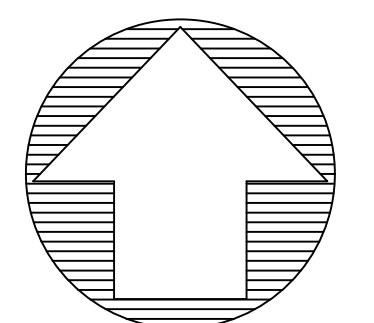


Feb 15, 2022 4:23:48 PM
St. Cloud
St. Cloud VAMC

ELECTRICAL CONNECTION

Exhaust Fan Will Connect to Existing "Johnson Controls"
Operation Time for Exhaust fan: 0600 - 18:00

NORTH



BUILDING 3 ATTIC

No	REVISION

APPROVED: SERVICE LINE DIRECTOR	DATE:	APPROVED: INFECTION CONTROL NURSE	DATE:
APPROVED: GEMS COORDINATOR	DATE:	APPROVED: PATIENT SAFETY	DATE:
APPROVED: PROJECTS SECTION MANAGER	DATE:	APPROVED: CHIEF OF POLICE	DATE:
APPROVED: DIRECTOR FMS	DATE:	APPROVED: SAFETY MANAGER	DATE:

APPROVED: SERVICE LINE DIRECTOR	DATE:	APPROVED: INFECTION CONTROL NURSE	DATE:
APPROVED: GEMS COORDINATOR	DATE:	APPROVED: PATIENT SAFETY	DATE:
APPROVED: PROJECTS SECTION MANAGER	DATE:	APPROVED: CHIEF OF POLICE	DATE:
APPROVED: DIRECTOR FMS	DATE:	APPROVED: SAFETY MANAGER	DATE:

APPROVED: SERVICE LINE DIRECTOR	DATE:	APPROVED: INFECTION CONTROL NURSE	DATE:
APPROVED: GEMS COORDINATOR	DATE:	APPROVED: PATIENT SAFETY	DATE:
APPROVED: PROJECTS SECTION MANAGER	DATE:	APPROVED: CHIEF OF POLICE	DATE:
APPROVED: DIRECTOR FMS	DATE:	APPROVED: SAFETY MANAGER	DATE:

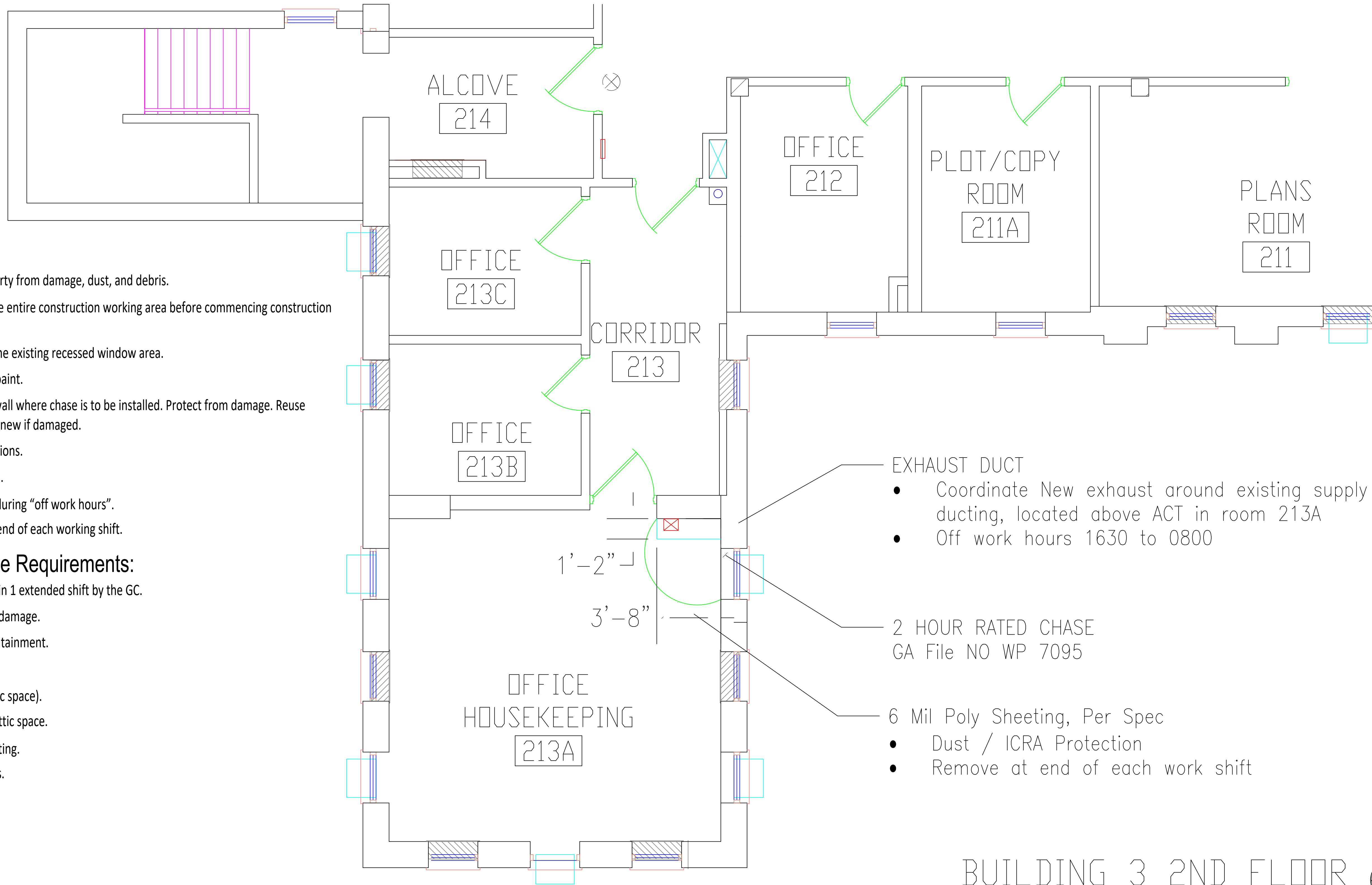
DRAWING TITLE	
GENERAL - 1	
APPROVED: ASSOCIATE HEALTH CARE SYSTEM DIRECTOR	
DATE:	
APPROVED: CHIEF OF STAFF	
DATE:	
APPROVED: HEALTH CARE SYSTEM DIRECTOR	
DATE:	

PROJECT TITLE		6-13-2022	
Install Exhaust Fan Dental Lab		PLOT SCALE 1/4"=1'	
		PROJECT NO. 656-22-348	
BUILDING No 3	CHECKED BY	DRAWN	DRAWING NO. G-102
LOCATION VA MEDICAL CENTER ST.CLOUD, MN 56303			



U.S. Department of Veterans Affairs
Veterans Health Administration
St. Cloud VA Health Care System

INSTALL EXHAUST FAN DENTAL LAB PROJECT #656-22-348



Contractor notes:

- Contractor to move/ protect existing VA property from damage, dust, and debris.
- Install dust protection/ barrier; encapsulate the entire construction working area before commencing construction work.
- Frame the Duct chase, as to not encroach on the existing recessed window area.
- Contractor to paint 2hr chase, match existing paint.
- Resilient base (existing), to be removed from wall where chase is to be installed. Protect from damage. Reuse resilient base on new chase wall. Replace with new if damaged.
- Adjust acoustical ceiling to fit new wall dimensions.
- Use WP 7095 as guidance for wall construction.
- Contractor to perform 1st and 2nd floor work during "off work hours".
- Take down dust protection poly (6mil), at the end of each working shift.

2hr Chase Assembly Sequence Requirements:

- All work described below, to be accomplished in 1 extended shift by the GC.
- Relocate VA items and furniture. Protect from damage.
- Install ICRA requirements and construction containment.
- Prep the site.
- Demo/ cut concrete flooring (2nd floor and attic space).
- Install Ducting assembly, with Fire damper in attic space.
- Construct 2hr fire barrier around 2nd floor ducting.
- Clean work area to pre-construction conditions.
- Restore 2nd floor VA property.

EXHAUST DUCT

- Coordinate New exhaust around existing supply air ducting, located above ACT in room 213A
- Off work hours 1630 to 0800

2 HOUR RATED CHASE GA File NO WP 7095

6 Mil Poly Sheeting, Per Spec

- Dust / ICRA Protection
- Remove at end of each work shift

BUILDING 3 2ND FLOOR 

No	REVISION	DATE

APPROVED: SERVICE LINE DIRECTOR
APPROVED: GEMS COORDINATOR
APPROVED: PROJECTS SECTION MANAGER
APPROVED: DIRECTOR FMS

DATE:	APPROVED: INFECTION CONTROL NURSE	DATE:
DATE:	APPROVED: PATIENT SAFETY	DATE:
DATE:	APPROVED: CHIEF OF POLICE	DATE:
DATE:	APPROVED: SAFETY MANAGER	DATE:

DRAWING TITLE	
ARCHITECTURAL - 1	
APPROVED: ASSOCIATE HEALTH CARE SYSTEM DIRECTOR	
DATE:	
APPROVED: CHIEF OF STAFF	
DATE:	
APPROVED: HEALTH CARE SYSTEM DIRECTOR	
DATE:	

PROJECT TITLE		6-13-2022	
INSTALL EXHAUST FAN DENTAL LAB		PLOT SCALE 1/4"=1'	
PROJECT NO.		656-22-348	
BUILDING No	CHECKED BY	DRAWN	DRAWING NO.
3			A-101
LOCATION VA MEDICAL CENTER ST.CLOUD, MN 56303			



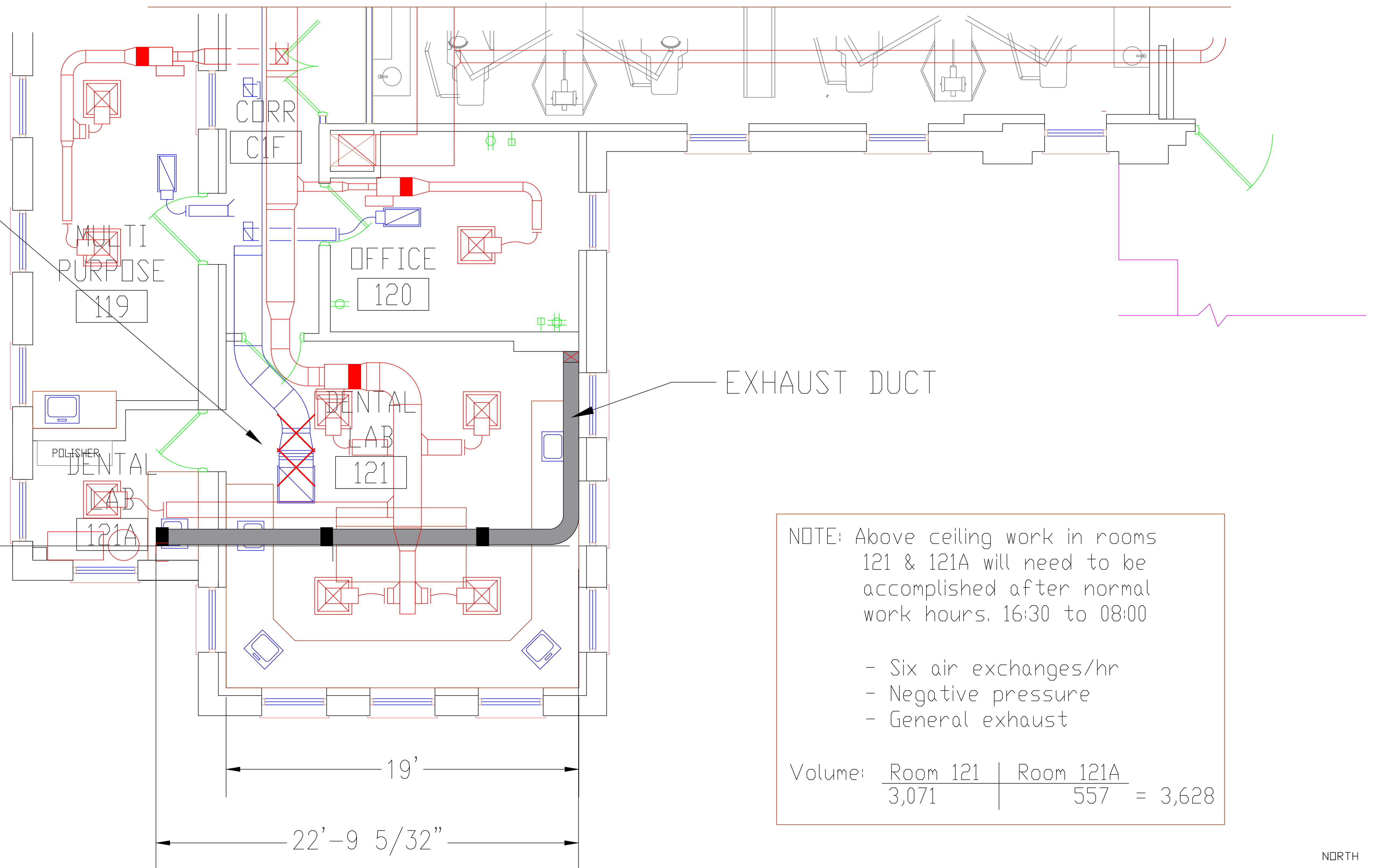
U.S. Department of Veterans Affairs
Veterans Health Administration
St. Cloud VA Health Care System

INSTALL EXHAUST FAN DENTAL LAB

PROJECT #656-22-348

Contractor Notes:

- Duct installation to be accomplished in rooms 121 and 121A has a maximum timeframe of 14 workdays.
- Room 121 has an existing plaster ceiling between the acoustical drop ceiling and concrete deck above. Assume lead based paint is present abate as necessary as outlined in the project specifications.
- Demo existing return air ducting in room 121, cap at first duct connection, after penetration in room 121.
- Contractor to provide TAB's for proper CFM balancing, and pressure differential of -0.01 inches.
- perform pre-construction TABs inspection of entire clinic, back to existing AHU, obtain baseline data; report any findings/ deficiencies to COR.
- After equipment installation, perform TABs; adjust equipment to achieve desired specifications.
- Perform a final TABs inspection, to ensure proper equipment installation; submit final TABs inspection report to project COR.



NOTE: Above ceiling work in rooms 121 & 121A will need to be accomplished after normal work hours. 16:30 to 08:00

- Six air exchanges/hr
- Negative pressure
- General exhaust

Volume: $\frac{\text{Room 121}}{3,071} \mid \frac{\text{Room 121A}}{557} = 3,628$

BUILDING 3 1st FLOOR



No	REVISION	DATE

APPROVED: SERVICE LINE DIRECTOR	DATE:	APPROVED: INFECTION CONTROL NURSE	DATE:
APPROVED: GEMS COORDINATOR	DATE:	APPROVED: PATIENT SAFETY	DATE:
APPROVED: PROJECTS SECTION MANAGER	DATE:	APPROVED: CHIEF OF POLICE	DATE:
APPROVED: DIRECTOR FMS	DATE:	APPROVED: SAFETY MANAGER	DATE:

APPROVED: ASSOCIATE HEALTH CARE SYSTEM DIRECTOR	DATE:
APPROVED: CHIEF OF STAFF	DATE:
APPROVED: HEALTH CARE SYSTEM DIRECTOR	DATE:

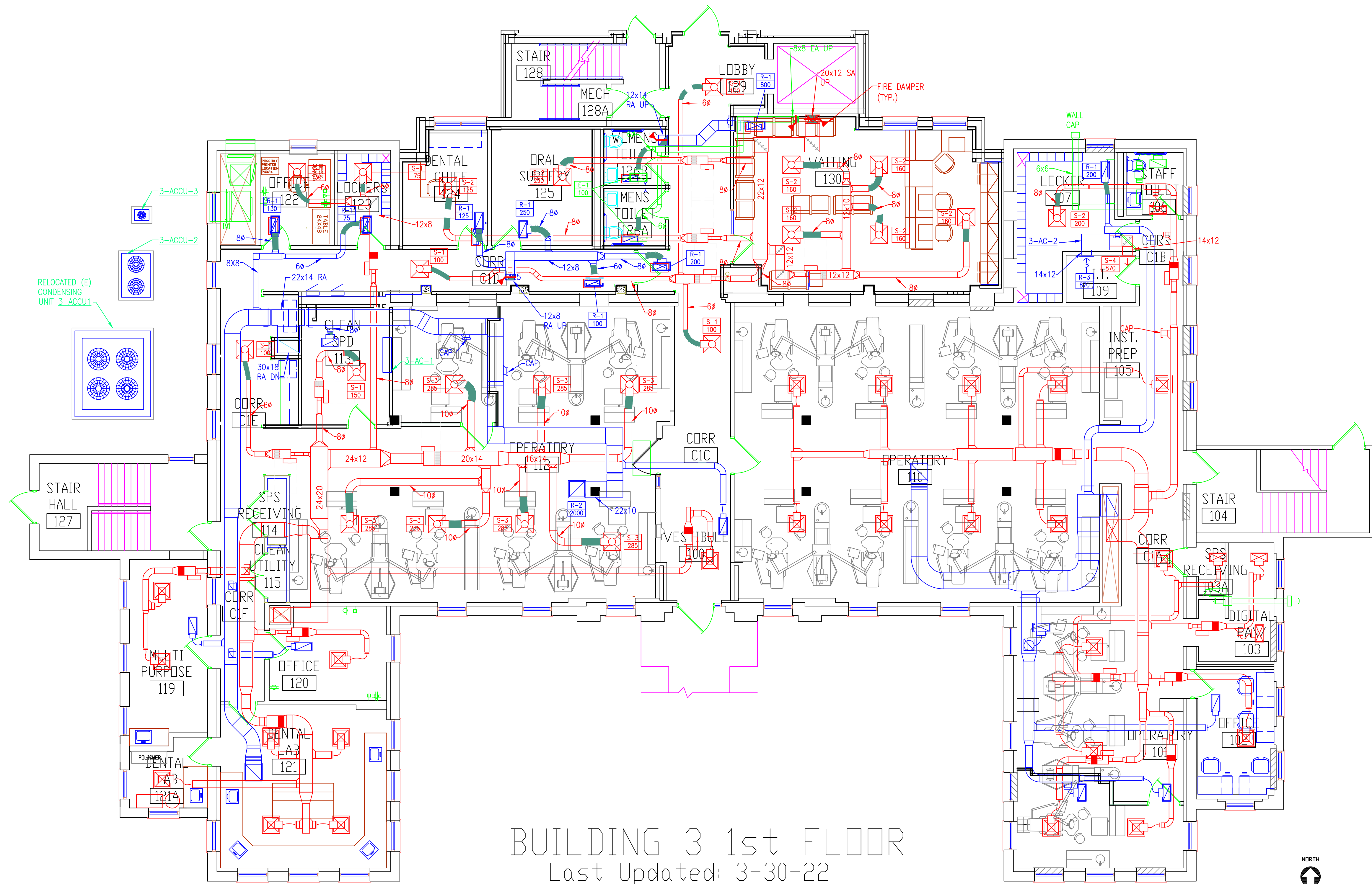
DRAWING TITLE	MECHANICAL - 1
PROJECT TITLE	INSTALL EXHAUST FAN DENTAL LAB
BUILDING No	3
CHECKED BY	
DRAWN	
DRAWING NO.	M-101
LOCATION	VA MEDICAL CENTER ST.CLOUD, MN 56303
	348-03

PROJECT TITLE	INSTALL EXHAUST FAN DENTAL LAB	DATE:	6-13-2022
PLOT SCALE	1/4"=1'	PROJECT NO.	656-22-348
BUILDING No	3	CHECKED BY	
DRAWN		DRAWING NO.	M-101
LOCATION	VA MEDICAL CENTER ST.CLOUD, MN 56303		348-03

APPROVED: SERVICE LINE DIRECTOR	DATE:	APPROVED: INFECTION CONTROL NURSE	DATE:
APPROVED: GEMS COORDINATOR	DATE:	APPROVED: PATIENT SAFETY	DATE:
APPROVED: PROJECTS SECTION MANAGER	DATE:	APPROVED: CHIEF OF POLICE	DATE:
APPROVED: DIRECTOR FMS	DATE:	APPROVED: SAFETY MANAGER	DATE:



U.S. Department of Veterans Affairs
 Veterans Health Administration
 St. Cloud VA Health Care System



BUILDING 3 1st FLOOR
 Last Updated: 3-30-22
 HVAC Last Updated: 6-9-15



No	REVISION	DATE

APPROVED PROJECTOR	DATE	APPROVED PATIENT SAFETY	DATE	APPROVED ERM MANAGER	DATE	APPROVED DIRECTOR/PM	DATE	DRAWING TITLE	MECHANICAL - 2	PROJECT TITLE	Install Exhaust Fan Dental Lab	DATE	6/27/2022
APPROVED SERVICE LINE DIRECTOR	DATE	APPROVED SAFETY MANAGER	DATE	APPROVED W/MANAGER	DATE	APPROVED ASSOCIATE DIRECTOR	DATE	APPROVED MEDICAL CENTER DIRECTOR		BUILDING NO.	3	PROJECT NO.	656-22-348
APPROVED TEAM COORDINATOR	DATE	APPROVED CHIEF OF POLICE	DATE	APPROVED PROJECTS SECTION MANAGER	DATE	APPROVED NURSE EXECUTIVE	DATE	APPROVED		OFFICE NO.		DISCIPLINE	M-102
APPROVED INSPECTOR/CONTROL NURSE	DATE	APPROVED OT MANAGER	DATE	APPROVED ASSISTANT CHIEF ENGINEER	DATE	APPROVED CHIEF OF STAFF	DATE	APPROVED		LOCATION	VA MEDICAL CENTER ST. CLOUD, MN 56309		




U.S. Department of Veterans Affairs
 Veterans Health Administration
 St. Cloud VA Health Care System

GRILLES, REGISTERS and DIFFUSERS

UNIT: 3-AHU-2

ROOM NO.	OUTLET TYPE SIZE "K" VBL CFM	REQUIRED PRELIMINARY VEL CFM VEL CFM REQ.	FINAL	% OF
TU-3-8 K=2.053				
205D	1 S-2 8"	1.0 225 215 215 230	230	102%
MAX CFM			225	215
MIN CFM			70	60
TU-3-9 K=1.886				
222	2 S-2 8"	1.0 175 175 260 260 275	275	157%
C2D	3 S-1 6"	1.0 100	PHASE II	
MAX CFM			275	275
MIN CFM			130	125
TU-3-10 K=1.886				
218	4 S-2 8"	1.0 175 175 165 165 175	175	100%
MAX CFM			175	165
MIN CFM			60	50
TU-3-11 K=				
205E	5 S-3 10"	1.0 200	PHASE II	
MAX CFM			200	
MIN CFM			60	

Technician: TM Date: 8/21/13

GRILLES, REGISTERS and DIFFUSERS

UNIT: 3-AHU-2

ROOM NO.	OUTLET TYPE SIZE "K" VBL CFM	REQUIRED PRELIMINARY VEL CFM VEL CFM REQ.	FINAL	% OF
TU-3-3 K=2.41				
130	20 S-2 8"	1.0 160 160 130 130 150	150	94%
130	21 S-2 8"	1.0 160 160 160 160 165	165	103%
130	22 S-2 8"	1.0 160 160 180 180 170	170	106%
130	23 S-2 8"	1.0 160 160 150 150 160	160	100%
130	24 S-2 8"	1.0 160 160 130 130 165	165	103%
MAX CFM			800	750
MIN CFM			240	230
TU-3-4 K=1.987				
129	25 S-1 6"	1.0 100	PHASE II	
C1C	26 S-1 6"	1.0 100	PHASE II	
C1D	27 S-1 6"	1.0 100	280	305
MAX CFM			300	305
MIN CFM			120	105

Technician: TM Date: 8/21/13

GRILLES, REGISTERS and DIFFUSERS

UNIT: EXISTING SUPPLY

ROOM NO.	OUTLET TYPE SIZE "K" VBL CFM	REQUIRED PRELIMINARY VEL CFM VEL CFM REQ.	FINAL	% OF
VAV				
123	10 S-1 6"	1.0 75	75	PHASE II
122	11 S-1 6"	1.0 130	130	PHASE II
MAX CFM			205	
MIN CFM				

Technician: TM Date: 8/21/13

GRILLES, REGISTERS and DIFFUSERS

UNIT: 3-AHU-2

ROOM NO.	OUTLET TYPE SIZE "K" VBL CFM	REQUIRED PRELIMINARY VEL CFM VEL CFM REQ.	FINAL	% OF
TU-3-12 K=				
202	6 S-2 8"	1.0 140	140	PHASE II
203	7 S-2 8"	1.0 140	140	PHASE II
204	8 S-2 8"	1.0 140	140	PHASE II
MAX CFM			420	
MIN CFM			160	
TU-3-13 K=2.753				
220	9 S-2 8"	1.0 150 150 180 180 185	185	123%
219	10 S-2 8"	1.0 150 150 175 175 180	180	120%
216	11 S-2 8"	1.0 100	PHASE II	
217	12 S-2 8"	1.0 150 150 180 180 180	180	120%
MAX CFM			550	545
MIN CFM			120	115
TU-3-14 K=				
215	13 S-2 8"	1.0 210	PHASE II	
215	14 S-2 8"	1.0 210	PHASE II	
MAX CFM			420	
MIN CFM			150	

Technician: TM Date: 8/21/13

GRILLES, REGISTERS and DIFFUSERS

UNIT: 3-AHU-2

ROOM NO.	OUTLET TYPE SIZE "K" VBL CFM	REQUIRED PRELIMINARY VEL CFM VEL CFM REQ.	FINAL	% OF
TU-3-3 K=2.41				
130	20 S-2 8"	1.0 160 160 130 130 150	150	94%
130	21 S-2 8"	1.0 160 160 160 160 165	165	103%
130	22 S-2 8"	1.0 160 160 180 180 170	170	106%
130	23 S-2 8"	1.0 160 160 150 150 160	160	100%
130	24 S-2 8"	1.0 160 160 130 130 165	165	103%
MAX CFM			800	750
MIN CFM			240	230
TU-3-4 K=1.987				
129	25 S-1 6"	1.0 100	PHASE II	
C1C	26 S-1 6"	1.0 100	PHASE II	
C1D	27 S-1 6"	1.0 100	280	305
MAX CFM			300	305
MIN CFM			120	105

Technician: TM Date: 8/21/13

GRILLES, REGISTERS and DIFFUSERS

UNIT: EXISTING RETURN

ROOM NO.	OUTLET TYPE SIZE "K" VBL CFM	REQUIRED PRELIMINARY VEL CFM VEL CFM REQ.	FINAL	% OF
122	1 R-1 24 x 12 1.0	130	130	PHASE II
123	2 R-1 24 x 12 1.0	75	75	PHASE II
113	3 R-1 24 x 12 1.0	150	150	PHASE II
112	4 R-2 24 x 24 1.0	2000	2000	PHASE II

Technician: TM Date: 8/21/13

GRILLES, REGISTERS and DIFFUSERS

UNIT: 3-AHU-2

ROOM NO.	OUTLET TYPE SIZE "K" VBL CFM	REQUIRED PRELIMINARY VEL CFM VEL CFM REQ.	FINAL	% OF
TU-3-15 K=				
215	15 S-2 8"	1.0 210	210	PHASE II
215	16 S-2 8"	1.0 210	210	PHASE II
MAX CFM			420	
MIN CFM			140	
TU-3-16 K=				
215B	17 S-2 8"	1.0 250	250	PHASE II
MAX CFM			250	
MIN CFM			80	
TU-3-1 K=				
125	18 S-2 8"	1.0 190	190	PHASE II
MAX CFM			190	
MIN CFM			70	
TU-3-2 K=				
124	19 S-2 8"	1.0 125	125	PHASE II
MAX CFM			125	
MIN CFM			50	

Technician: TM Date: 8/21/13

GRILLES, REGISTERS and DIFFUSERS

UNIT: EXISTING SUPPLY

ROOM NO.	OUTLET TYPE SIZE "K" VBL CFM	REQUIRED PRELIMINARY VEL CFM VEL CFM REQ.	FINAL	% OF
TU-3-5 K=				
112	1 S-3 10"	1.0 285	285	PHASE II
112	2 S-3 10"	1.0 285	285	PHASE II
112	3 S-3 10"	1.0 285	285	PHASE II
112	4 S-3 10"	1.0 285	285	PHASE II
112	5 S-3 10"	1.0 285	285	PHASE II
112	6 S-3 10"	1.0 285	285	PHASE II
112	7 S-3 10"	1.0 285	285	PHASE II
MAX CFM			1995	
MIN CFM			600	
TU-3-6 K=				
C1E	8 S-1 6"	1.0 100	100	PHASE II
MAX CFM			100	
MIN CFM			60	
TU-3-7 K=				
113	9 S-1 6"	1.0 150	150	PHASE II
MAX CFM			150	
MIN CFM			50	

Technician: TM Date: 8/21/13

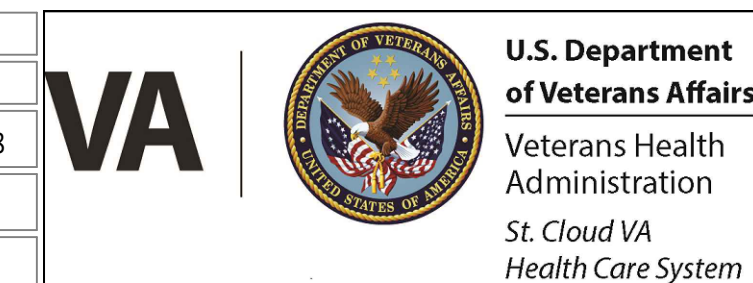
GRILLES, REGISTERS and DIFFUSERS

UNIT: EXHAUST

ROOM NO.	OUTLET TYPE SIZE "K" VBL CFM	REQUIRED PRELIMINARY VEL CFM VEL CFM REQ.	FINAL	% OF		
223	1 E-1 24 x 12 1.0	300	300	360	310	103%
224	2 E-1 24 x 12 1.0	300	300	400	315	105%
126B	3 E-1 24 x 12 1.0	100	100	125	110	110%
126A	4 E-1 24 x 12 1.0	100	100	120	110	110%
TOTAL			800	1005		845

Technician: TM Date: 8/21/13

APPROVED PROJECT GOR	DATE:	APPROVED PATIENT SAFETY	DATE:	APPROVED SW MANAGER	DATE:	APPROVED DIRECTOR RHM	DATE:	PROJECT TITLE	DATE:
APPROVED SERVICE LINE DIRECTOR	DATE:	APPROVED SAFETY MANAGER	DATE:	APPROVED MGR MANAGER	DATE:	APPROVED ASSOCIATE DIRECTOR	DATE:	MECHANICAL - 601	6/27/2022
APPROVED SEAM COORDINATOR	DATE:	APPROVED CHIEF OF POLICE	DATE:	APPROVED PROJECTS SECTION MANAGER	DATE:	APPROVED NURSE EXECUTIVE	DATE:	Install Exhaust Fan Dental Lab	6/27/2022
APPROVED INSPECTION CONTROL NURSE	DATE:	APPROVED CHIEF OF MANAGER	DATE:	APPROVED ASSISTANT CHIEF ENGINEER	DATE:	APPROVED CHIEF OF STAFF	DATE:	ISSUED BY: 3	ISSUED BY: M-601



REVISION	DATE
----------	------

INSTALL EXHAUST FAN DENTAL LAB PROJECT #656-22-348

St. Cloud VA Health Care System
Main Campus, St. Cloud, Minnesota

DENTAL CLINIC - ROOM DATA SHEET														
ROOM NAME	INDOOR TEMPERATURE				INDOOR RELATIVE HUMIDITY		MIN TOTAL ACH	MIN OA ACH	ROOM AIR		MAX NOISE LEVEL NC	ROOM AIR BALANCE	INDIVIDUAL ROOM CONTROL	
	COOLING		HEATING		% RH	% RH			RETURN EXHAUST G	EXHAUST S			TEMP	FLOW
	F	C	F	C	MAX	MIN								
Dental Suite (continued)														
DNPL1: General Purpose Laboratory	75	24	70	21	60	30	6	2	Exhaust (G)	40	(-)	Yes	VAV	
Note 1 - Exhaust from Prosthetic Dental Workstation Provide exhaust from the prosthetic dental workstation either by wall registers, installed at the table height, or by a canopy hood. Exhaust can be connected to the general exhaust system. Estimate the exhaust air volume based on the geometry of the work area. Note 2 - Heat Gain Coordinate equipment heat gain with the manufacturer. Note 3 - Boil-Out Sink and Casing Soldering Areas Provide exhaust over the boil-out sink and case-soldering area using a canopy hood, connected to a general exhaust system, and sized at 100 fpm (0.5 m/s) face velocity. Coordinate the hood size and location with the architectural drawings.														
DNPCI: Laboratory Porcelain / Ceramics	75	24	70	21	60	30	6	2	Exhaust (G)	40	(-)	Yes	VAV	
Note 1: Heat Gain Coordinate equipment heat gain with the manufacturer. Note 2 - Exhaust Air Intakes Locate exhaust registers and / or exhaust hoods at or near the technician's workbench. Coordinate with architectural and electrical drawings.														
DNTRI: Patient Prep / Recovery Room	75	24	70	21	60	30	6	2	Return	35	(+)	Yes	VAV	
Note - None														

CONTRACTOR TABS NOTES:

DESCRIPTION

A. Testing, adjusting, and balancing (TAB) of heating, ventilating and air conditioning (HVAC) systems. TAB includes the following:

1. Planning systematic TAB procedures.
2. Design Review Report.
3. Systems Inspection report.
4. Duct Air Leakage test report.
5. Systems Readiness Report.
6. Balancing air and water distribution systems; adjustment of total system to provide design performance; and testing performance of equipment and automatic controls.
7. Vibration and sound measurements.
8. Recording and reporting results.
9. Document critical paths of flow on reports.

TAB Specialist: The TAB specialist shall be either a member of AABC or TABB or an experienced technician of the Agency certified by NEBB. The certification shall be maintained for the entire duration of duties specified herein.

TAB Specialist shall be identified by the General Contractor within 60 days after the notice to proceed.

Obtain applicable contract documents and copies of approved submittals for HVAC equipment and automatic control systems.

DESIGN REVIEW REPORT:

The TAB Specialist shall review the Contract Plans and specifications and advise the COR of any design deficiencies that would prevent the HVAC systems from effectively operating in accordance with the sequence of operation specified or prevent the effective and accurate TAB of the system. The TAB Specialist shall provide a report individually listing each deficiency and the corresponding proposed corrective action necessary for proper system operation.

SYSTEM READINESS REPORT:

- A. The TAB Contractor shall measure existing air and water flow rates associated with existing systems utilized to serve renovated areas as indicated on drawings. Submit report of findings to the COR.
- B. Inspect each System to ensure that it is complete including installation and operation of controls. Submit report to COR in standard format and forms prepared and or approved by the Commissioning Agent.
- C. Verify that all items such as ductwork piping, dampers, valves, ports, terminals, connectors, etc., that is required for TAB are installed. Provide a report to the COR.

GA FILE NO. WP 7095	PROPRIETARY*	2 HOUR FIRE	45 to 49 FSTC SOUND
GYPSON WALLBOARD, STEEL C-H STUDS			
One layer 1" x 24" proprietary type X gypsum panels inserted between 2 1/2" floor and ceiling J runners with H section of 2 1/2" proprietary vented C-H steel studs between panels.			
OPPOSITE SIDE: Base layer 1/2" proprietary type X gypsum wallboard or gypsum veneer base applied parallel to studs with 1" Type S drywall screws 24" o.c. Face layer 1/2" proprietary type X gypsum wallboard or gypsum veneer base applied parallel to studs with 1 1/2" Type S drywall screws 12" o.c. Joints offset 24" o.c. from base layer joints.			
Sound tested with 1" mineral fiber insulation in cavity. (NLB)			
PROPRIETARY GYPSUM BOARD		Thickness: 3/2"	Field Sound Test: BBN 750706, 7-16-75
American Gypsum Company	-	1/2" FireBloc® Type C	
Lafarge North America Inc.	-	1/2" Firecheck® Type C	
Temple-Inland Forest Products Corporation	-	1/2" TG-C	
United States Gypsum Company	-	1/2" SHEETROCK® Brand FIRECODE® C Core Gypsum Panels	
	-	1" SHEETROCK® Brand Gypsum Liner Panels	

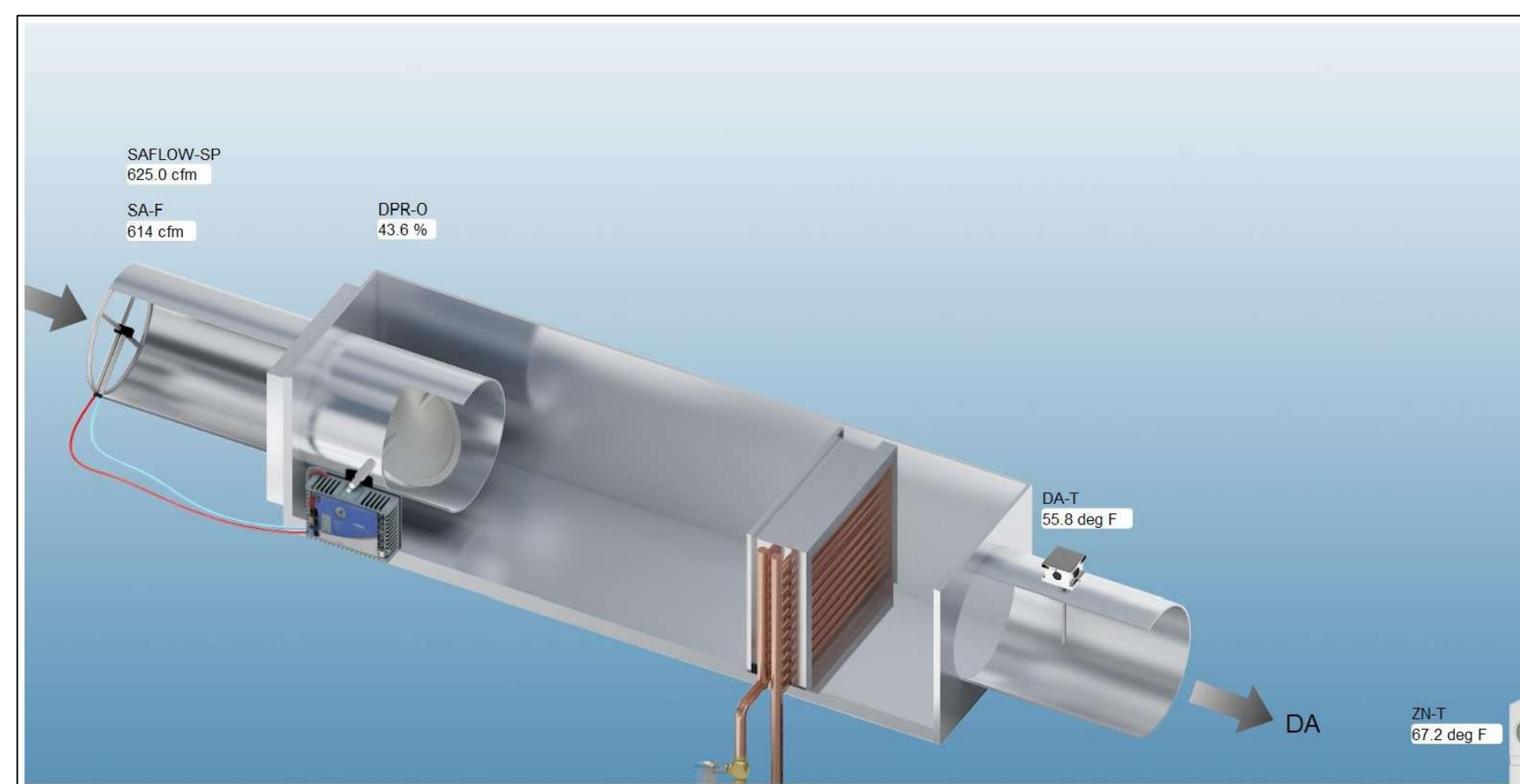
*Contact the manufacturer for more detailed information on proprietary products.



Metasys® Graphics Export

Created On: June 27, 2022 11:30 AM
Equipment Name: TU-1-1

Metasys Data is for Room 121 and Room 121A



APPROVED PROJECT COR	APPROVED PATENT SAFETY	APPROVED TAB MANAGER	APPROVED DIRECTOR/TAB	DRAWING TITLE	PROJECT TITLE	DATE
APPROVED SERVICE LINE DIRECTOR	APPROVED SAFETY MANAGER	APPROVED BID MANAGER	APPROVED ASSOCIATE DIRECTOR	MECHANICAL - 701	Install Exhaust Fan Dental Lab	8/24/2022
APPROVED GEAR COORDINATOR	APPROVED CHIEF OF POLICE	APPROVED PROJECTS SECTION MANAGER	APPROVED NURSE EXECUTIVE			
APPROVED INFECTION CONTROL NURSE	APPROVED OT MANAGER	APPROVED ASSISTANT CHIEF ENGINEER	APPROVED CHIEF OF STAFF			

VA

U.S. Department of Veterans Affairs
Veterans Health Administration
St. Cloud VA Health Care System

No	REVISION	DATE