

VICINITY MAP

NOTES:

1. THE TOPOGRAPHIC MAPPING IS BASED ON TOPOGRAPHIC SURVEY PROVIDED BY BOLTON & MENK.
2. CONTRACTOR TO PROTECT OUTFALL AREA (GRATE) IN PONDS AND STAIRS THAT SERVICE THE PUMP HOUSE DURING CONSTRUCTION.
3. CONTRACTOR TO ADJUST MANHOLE RIM AND LIDS FOR THE EXISTING MANHOLES TO NEW ROADWAY ELEVATIONS.
4. CONTRACTOR TO USE LIKE MATERIALS FOR ALL EXTENSIONS OR PATCH BACK OF SIDEWALKS, DRIVES AND CURB AND GUTTER.
5. CONTRACTOR TO PROVIDE SIGNAGE AT FACILITY ENTRANCES AND THE JOBSITE DIRECTING PEOPLE AND VEHICLES DURING CONSTRUCTION ACTIVITIES. ANY SIGNS THAT MUST BE REMOVED DURING THE DEMOLITION PHASE ARE TO BE REPLACED UPON COMPLETION OF CONSTRUCTION.
6. CONTRACTOR TO PROTECT EXISTING TREES AROUND PICNIC SHELTER.
7. CONTRACTOR TO VERIFY LOCATION OF UTILITIES PRIOR TO CONSTRUCTION.
8. FLOODWALL LIGHTS AND STREET LIGHTS ARE NUMBERED AND WIRE DIFFERENTLY (SEE ELECTRICAL PLANS).
9. ALTERNATE 2 INCLUDES THE GATE AND BOLLARDS ONLY.

LEGEND

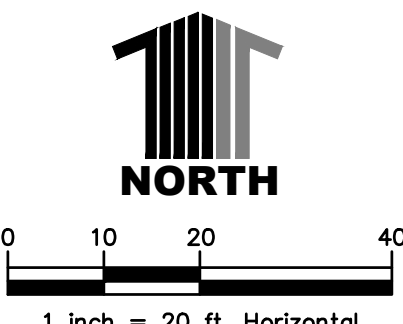
- ROW/PROPERTY LINE
- CENTERLINE
- PROPERTY BOUNDARY
- EASEMENT
- SEDIMENT CONTROL LOG
- LIMITS OF CONSTRUCTION
- NEW BUILDING BOUNDARY
- EX. WALL
- EX. ASPHALT
- NEW ASPHALT
- EX. CONCRETE
- NEW CONCRETE
- NEW HANDRAIL
- NEW STORM DRAIN
- EX. FENCE
- EX. FIRE HYDRANT
- EX. WATER SPIGOT
- EX. SANITARY SEWER
- EX. LIFT STATION
- EX. STORM DRAIN
- EX. STORM DRAIN INLET
- EX. POWER POLE
- EX. ELECTRIC TRANSFORMER
- EX. LIGHT POLE
- EX. POST
- EX. BOLLARD
- EX. CONTROL PANEL
- EX. ELECTRIC MANHOLE
- EX. DECIDUOUS TREE
- EX. CONIFEROUS TREE
- EX. CATCH BASIN
- NEW LIGHT POLE
- NEW FIRE HYDRANT
- NEW STREET SIGN
- NEW BOLLARD



A	B	C	D	E
18	.375	.625	8	1.5
24	.375	.625	11	1.5
30	.5	.75	13.5	1.875
36	.625	.875	16	2.25
48	.75	1.25	22	3

PEDESTRIAN CROSSING SIGN

MUTCD W11-2



CONSTRUCTION DOCUMENTS

Revision Number Associated with Clouded Area	
ADDENDUM #1	01/04/23
Revisions:	Date

CONSULTANTS:

**Calibre**  
9090 S RIDGELINE BLVD, SUITE 105  
HIGHLANDS RANCH, COLORADO 80129  
PHONE (303) 730-0434

**Albertson Engineering Inc.**

**SUMMIT**  
FIRE PROTECTION

ALBERTSON ENGINEERING, INC.  
315 NORTH MAIN AVENUE, SUITE 200  
SIOUX FALLS, SOUTH DAKOTA 57104  
PH: (605) 274-0880

SUMMIT FIRE CONSULTING  
575 MINNEHAHA AVE WEST  
ST. PAUL, MINNESOTA 55103  
(612) 387-7050

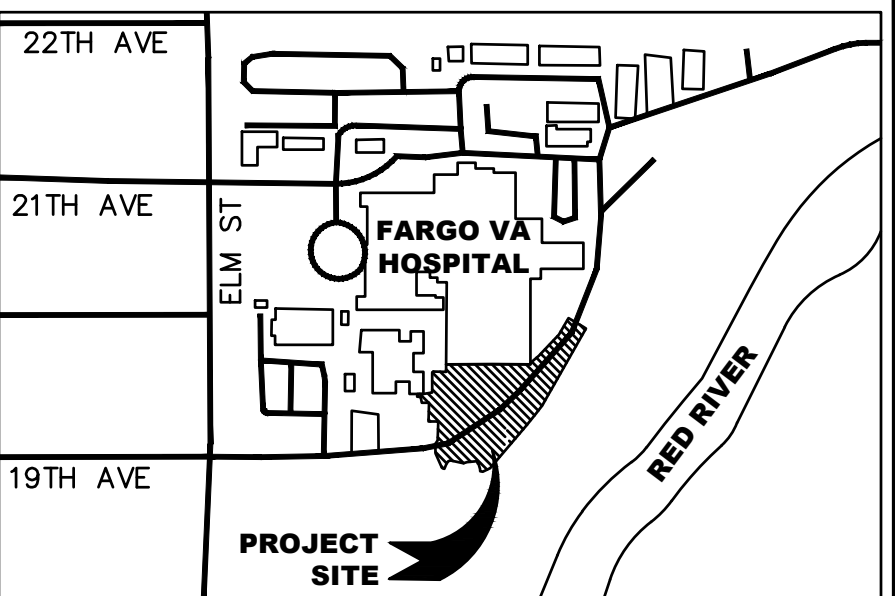
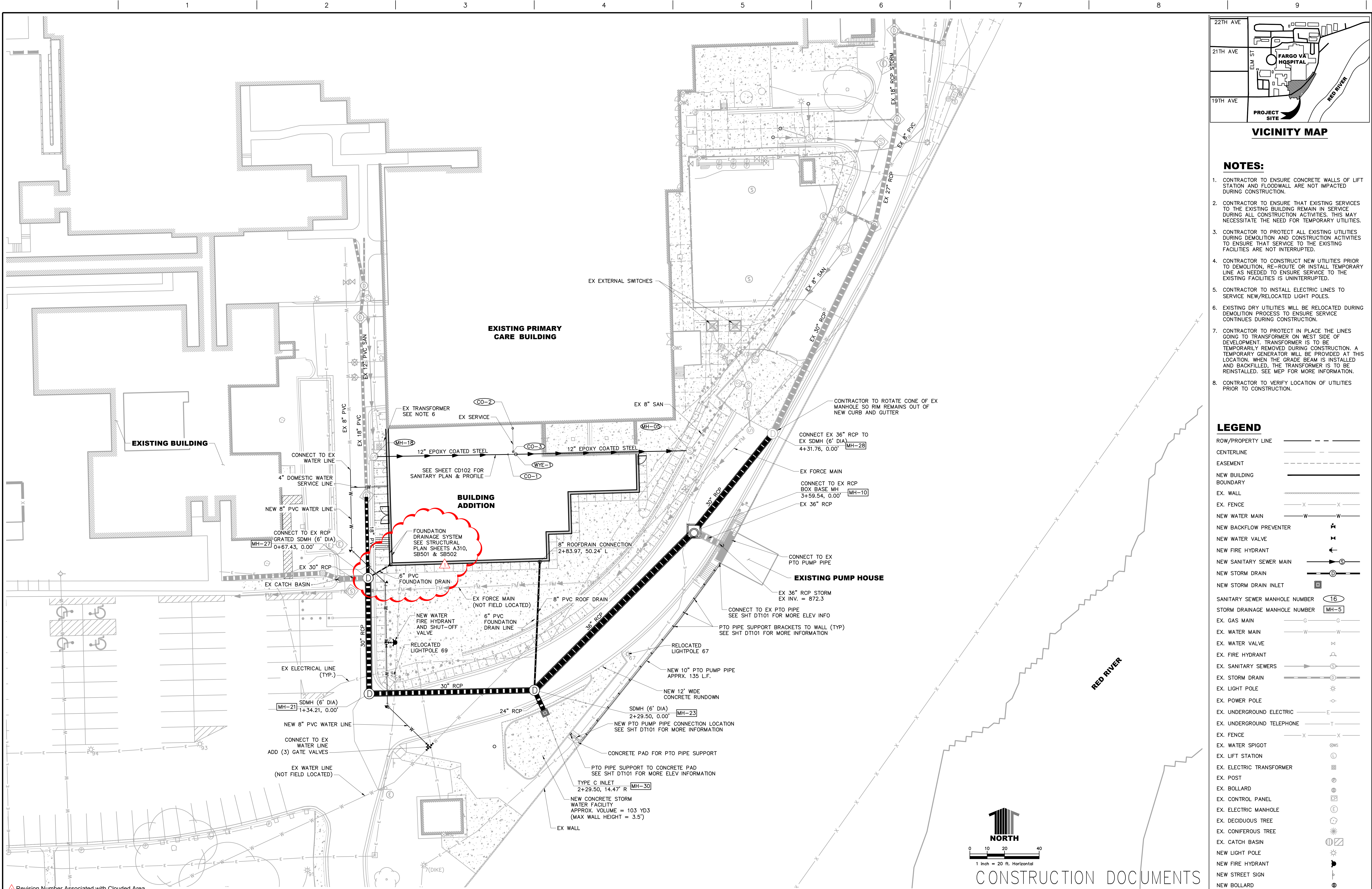
ARCHITECT

**FOURFRONT**  
DESIGN INC.

FOURFRONT DESIGN, INC.  
517 7TH STREET  
RAPID CITY, SOUTH DAKOTA 57701  
PH: (605) 342-9470  
FAX: (605) 342-2377  
WWW.FOURFRONTDESIGN.COM

Drawing Title <b>SITE PLAN</b>	Project Title <b>EXPAND BLDG. 1 FOR PRIMARY CARE</b>	Project Number 437-315	Office of Construction and Facilities Management		
Approved: Project Director <b>FARGO VAHCS</b>	Location 2101 ELM STREET FARGO, ND 58102	Building Number <b>1</b>			
	Date 11/16/2021	Checked JAG	Drawn WFP	Drawing Number <b>CS100</b>	Department of Veterans Affairs
				Dwg. 11 of 128	



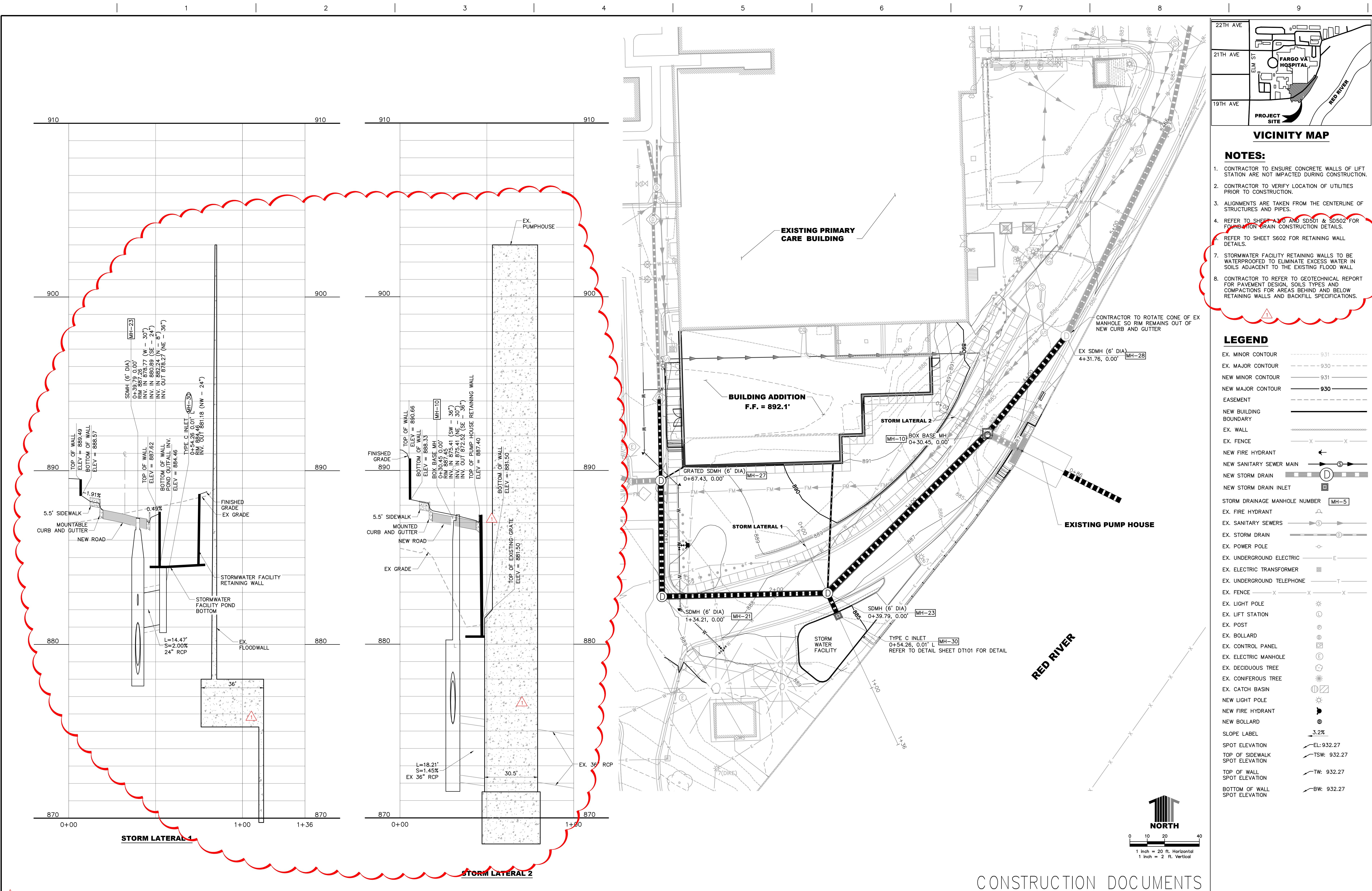


- NOTES:**
- CONTRACTOR TO ENSURE CONCRETE WALLS OF LIFT STATION AND FLOODWALL ARE NOT IMPACTED DURING CONSTRUCTION.
  - CONTRACTOR TO ENSURE THAT EXISTING SERVICES TO THE EXISTING BUILDING REMAIN IN SERVICE DURING ALL CONSTRUCTION ACTIVITIES. THIS MAY NECESSITATE THE NEED FOR TEMPORARY UTILITIES.
  - CONTRACTOR TO PROTECT ALL EXISTING UTILITIES DURING DEMOLITION AND CONSTRUCTION ACTIVITIES TO ENSURE THAT SERVICE TO THE EXISTING FACILITIES ARE NOT INTERRUPTED.
  - CONTRACTOR TO CONSTRUCT NEW UTILITIES PRIOR TO DEMOLITION, RE-ROUTE OR INSTALL TEMPORARY LINE AS NEEDED TO ENSURE SERVICE TO THE EXISTING FACILITIES IS UNINTERRUPTED.
  - CONTRACTOR TO INSTALL ELECTRIC LINES TO SERVICE NEW/RELOCATED LIGHT POLES.
  - EXISTING DRY UTILITIES WILL BE RELOCATED DURING DEMOLITION PROCESS TO ENSURE SERVICE CONTINUES DURING CONSTRUCTION.
  - CONTRACTOR TO PROTECT IN PLACE THE LINES GOING TO TRANSFORMER ON WEST SIDE OF DEVELOPMENT. TRANSFORMER IS TO BE TEMPORARILY REMOVED DURING CONSTRUCTION. A TEMPORARY GENERATOR WILL BE PROVIDED AT THIS LOCATION. WHEN THE GRADE BEAM IS INSTALLED AND BACKFILLED, THE TRANSFORMER IS TO BE REINSTALLED. SEE MEP FOR MORE INFORMATION.
  - CONTRACTOR TO VERIFY LOCATION OF UTILITIES PRIOR TO CONSTRUCTION.

LEGEND	
ROW/PROPERTY LINE	---
CENTERLINE	---
EASEMENT	---
NEW BUILDING BOUNDARY	---
EX. WALL	---
EX. FENCE	---
NEW WATER MAIN	---
NEW BACKFLOW PREVENTER	---
NEW WATER VALVE	---
NEW FIRE HYDRANT	---
NEW SANITARY SEWER MAIN	---
NEW STORM DRAIN	---
NEW STORM DRAIN INLET	---
SANITARY SEWER MANHOLE NUMBER	16
STORM DRAINAGE MANHOLE NUMBER	MH-5
EX. GAS MAIN	---
EX. WATER MAIN	---
EX. WATER VALVE	---
EX. FIRE HYDRANT	---
EX. SANITARY SEWERS	---
EX. STORM DRAIN	---
EX. LIGHT POLE	---
EX. POWER POLE	---
EX. UNDERGROUND ELECTRIC	---
EX. UNDERGROUND TELEPHONE	---
EX. FENCE	---
EX. WATER SPIGOT	---
EX. LIFT STATION	---
EX. ELECTRIC TRANSFORMER	---
EX. POST	---
EX. BOLLARD	---
EX. CONTROL PANEL	---
EX. ELECTRIC MANHOLE	---
EX. DECIDUOUS TREE	---
EX. CONIFEROUS TREE	---
EX. CATCH BASIN	---
NEW LIGHT POLE	---
NEW FIRE HYDRANT	---
NEW STREET SIGN	---
NEW BOLLARD	---

Revision Number Associated with Clouded Area		CONSULTANTS:		ARCHITECT		Drawing Title		Project Title		Project Number		Office of Construction and Facilities Management	
ADDITION #1		Calibre		Fourfront Design, Inc.		OVERALL UTILITY PLAN		EXPAND BLDG. 1 FOR PRIMARY CARE		437-315			
01/04/23		Albertson Engineering Inc.		FARGO VAHCS		Approved: Project Director		Location		Building Number		Department of Veterans Affairs	
Date		Summit Fire Protection		FARGO VAHCS		FARGO VAHCS		2101 ELM STREET		1			
								FARGO, ND 58102		Drawing Number		CU100	
								Date		Checked			
								11/16/2021		JAG		Dwg. 12 of 128	
								Drawn		WFP			





- NOTES:**
1. CONTRACTOR TO ENSURE CONCRETE WALLS OF LIFT STATION ARE NOT IMPACTED DURING CONSTRUCTION.
  2. CONTRACTOR TO VERIFY LOCATION OF UTILITIES PRIOR TO CONSTRUCTION.
  3. ALIGNMENTS ARE TAKEN FROM THE CENTERLINE OF STRUCTURES AND PIPES.
  4. REFER TO SHEET A-10 AND SD501 & SD502 FOR FOUNDATION DRAIN CONSTRUCTION DETAILS.
  5. REFER TO SHEET S602 FOR RETAINING WALL DETAILS.
  6. STORMWATER FACILITY RETAINING WALLS TO BE WATERPROOFED TO ELIMINATE EXCESS WATER IN SOILS ADJACENT TO THE EXISTING FLOOD WALL.
  7. CONTRACTOR TO REFER TO GEOTECHNICAL REPORT FOR PAVEMENT DESIGN, SOILS TYPES AND COMPACTIONS FOR AREAS BEHIND AND BELOW RETAINING WALLS AND BACKFILL SPECIFICATIONS.

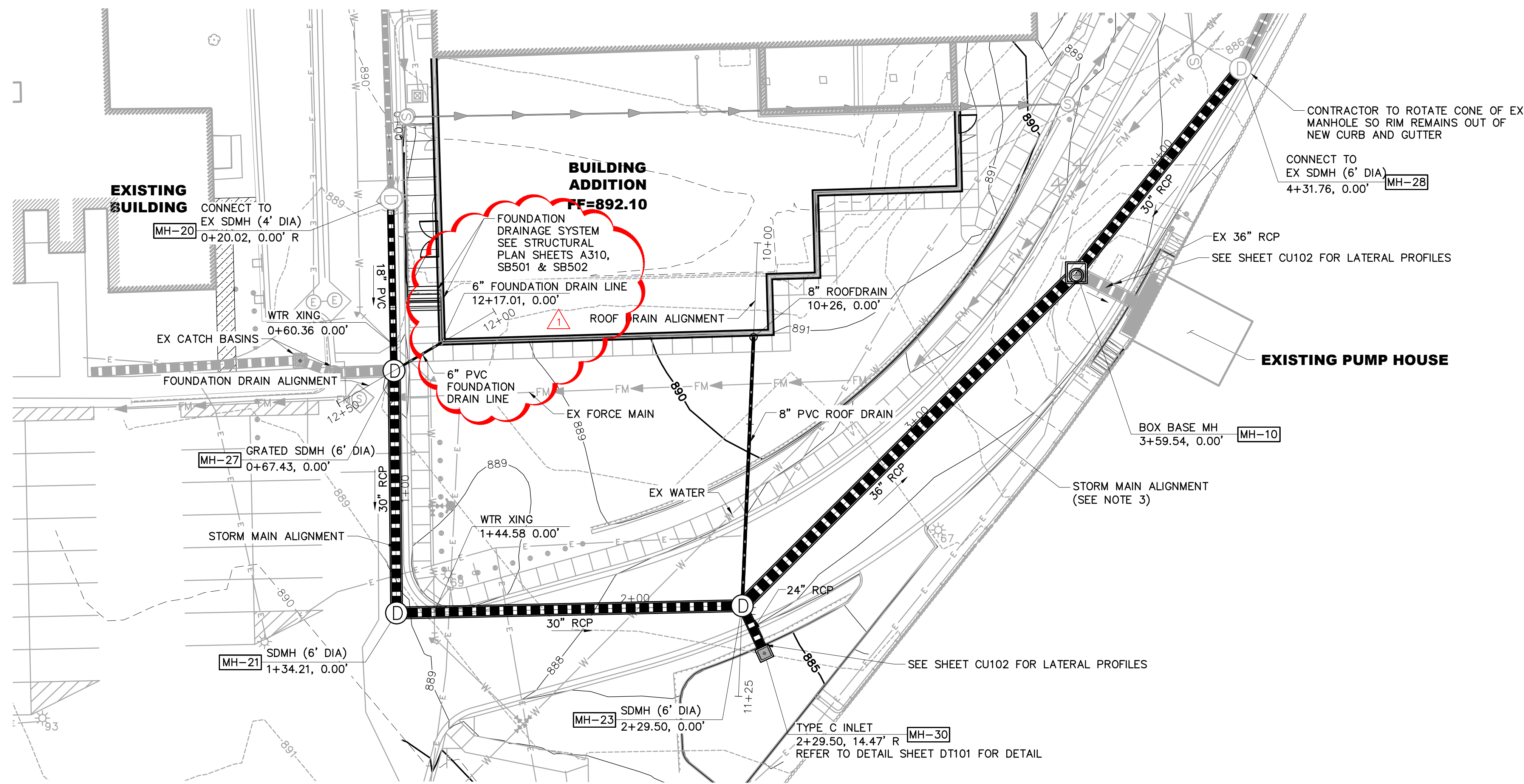
**LEGEND**

EX. MINOR CONTOUR	----- 931
EX. MAJOR CONTOUR	----- 930
NEW MINOR CONTOUR	----- 931
NEW MAJOR CONTOUR	----- 930
EASEMENT	-----
NEW BUILDING BOUNDARY	-----
EX. WALL	-----
EX. FENCE	-----
NEW FIRE HYDRANT	-----
NEW SANITARY SEWER MAIN	-----
NEW STORM DRAIN	-----
NEW STORM DRAIN INLET	-----
STORM DRAINAGE MANHOLE NUMBER	MH-5
EX. FIRE HYDRANT	-----
EX. SANITARY SEWERS	-----
EX. STORM DRAIN	-----
EX. POWER POLE	-----
EX. UNDERGROUND ELECTRIC	-----
EX. ELECTRIC TRANSFORMER	-----
EX. UNDERGROUND TELEPHONE	-----
EX. FENCE	-----
EX. LIGHT POLE	-----
EX. LIFT STATION	-----
EX. POST	-----
EX. BOLLARD	-----
EX. CONTROL PANEL	-----
EX. ELECTRIC MANHOLE	-----
EX. DECIDUOUS TREE	-----
EX. CONIFEROUS TREE	-----
EX. CATCH BASIN	-----
NEW LIGHT POLE	-----
NEW FIRE HYDRANT	-----
NEW BOLLARD	-----
SLOPE LABEL	3.2%
SPOT ELEVATION	EL: 932.27
TOP OF SIDEWALK	TSW: 932.27
TOP OF WALL	TW: 932.27
BOTTOM OF WALL	BW: 932.27

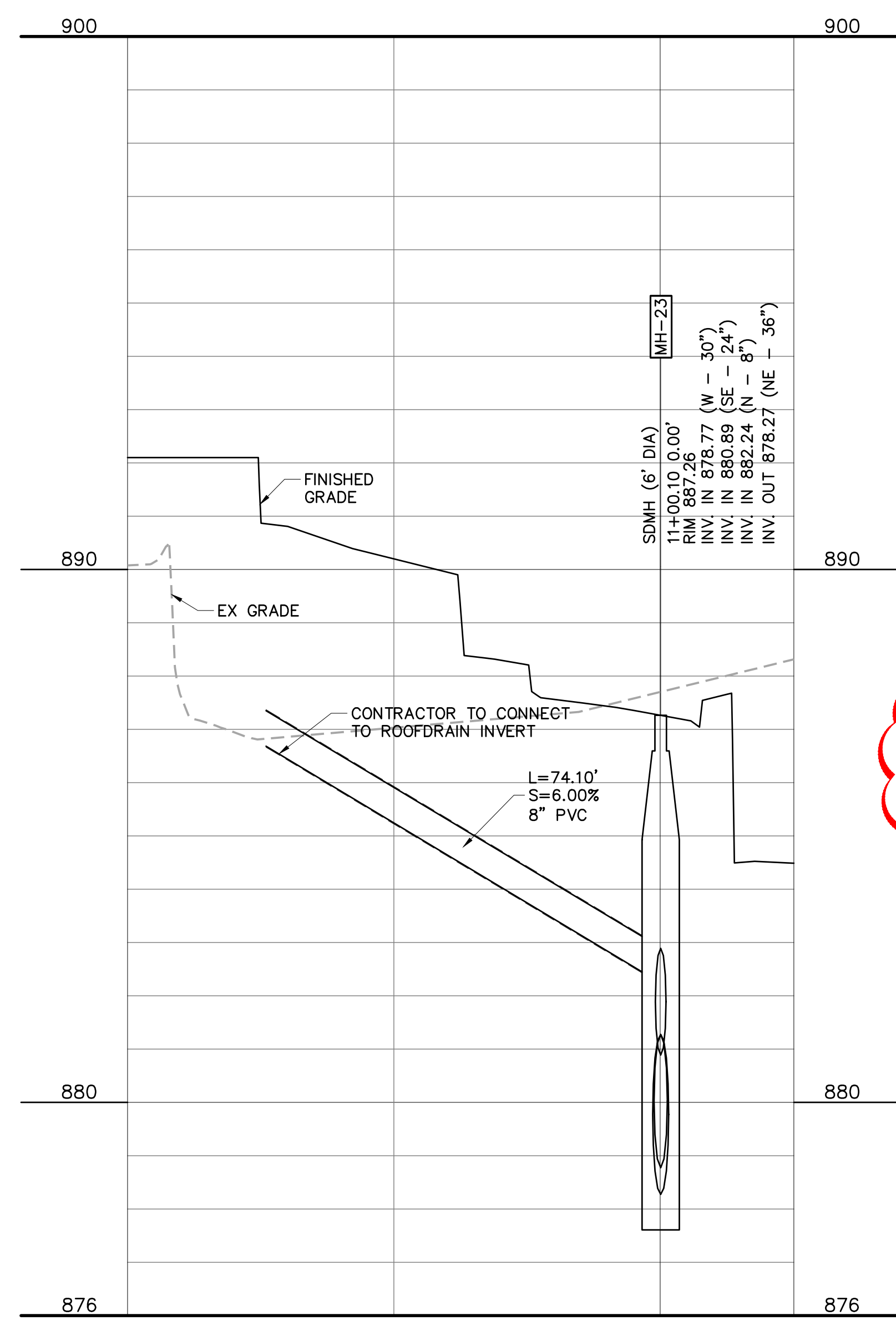
<b>Revision Number Associated with Clouded Area</b>		<b>CONSULTANTS:</b>		<b>ARCHITECT</b>		<b>Drawing Title</b>		<b>Project Title</b>		<b>Project Number</b>		<b>Office of Construction and Facilities Management</b>			
		CALIBRE 9090 S RIDGELINE BLVD, SUITE 105 HIGHLANDS RANCH, COLORADO 80129 PHONE (303) 730-0434		ALBERTSON ENGINEERING, INC. 315 NORTH MAIN AVENUE, SUITE 200 SIOUX FALLS, SOUTH DAKOTA 57104 PH: (605) 274-0880		FOURFRONT DESIGN, INC. 517 7TH STREET RAPID CITY, SOUTH DAKOTA 57701 PH: (605) 342-9470 FAX: (605) 342-2377 WWW.FOURFRONTDESIGN.COM		STORM SEWER PLAN AND PROFILE		EXPAND BLDG. 1 FOR PRIMARY CARE				437-315	
<b>ADDENDUM #1</b>		01/04/23						<b>Approved: Project Director</b>		<b>Location</b>		<b>Drawing Number</b>		<b>Department of Veterans Affairs</b>	
Revisions:		Date						FARGO VAHCS		2101 ELM STREET FARGO, ND 58102		CU102			
								Date		Checked		Drawn		Dwg. 14 of 128	
								11/16/2021		JAG		WFP			

VA FORM 08-6231

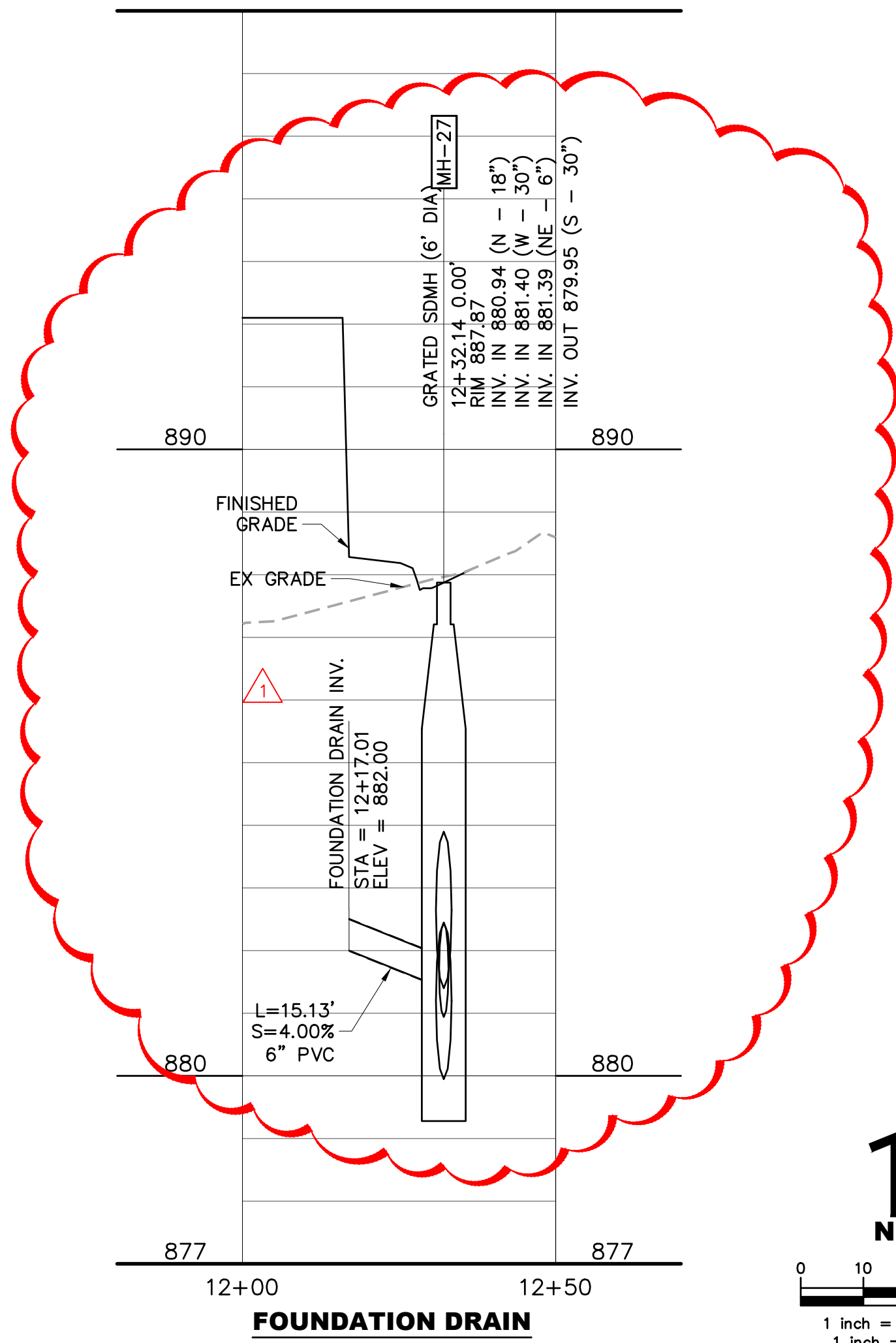




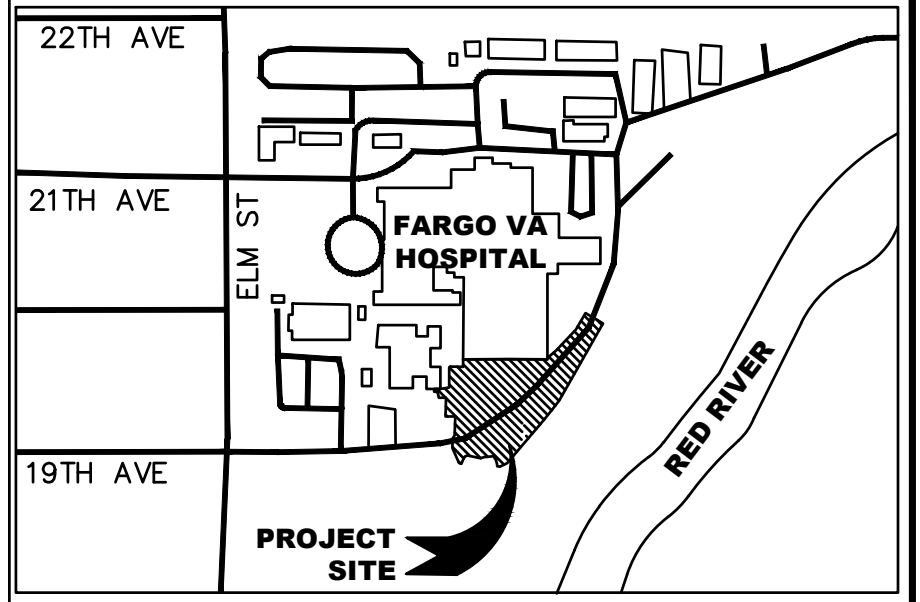
STORM MAIN



ROOF DRAIN



CONSTRUCTION DOCUMENTS

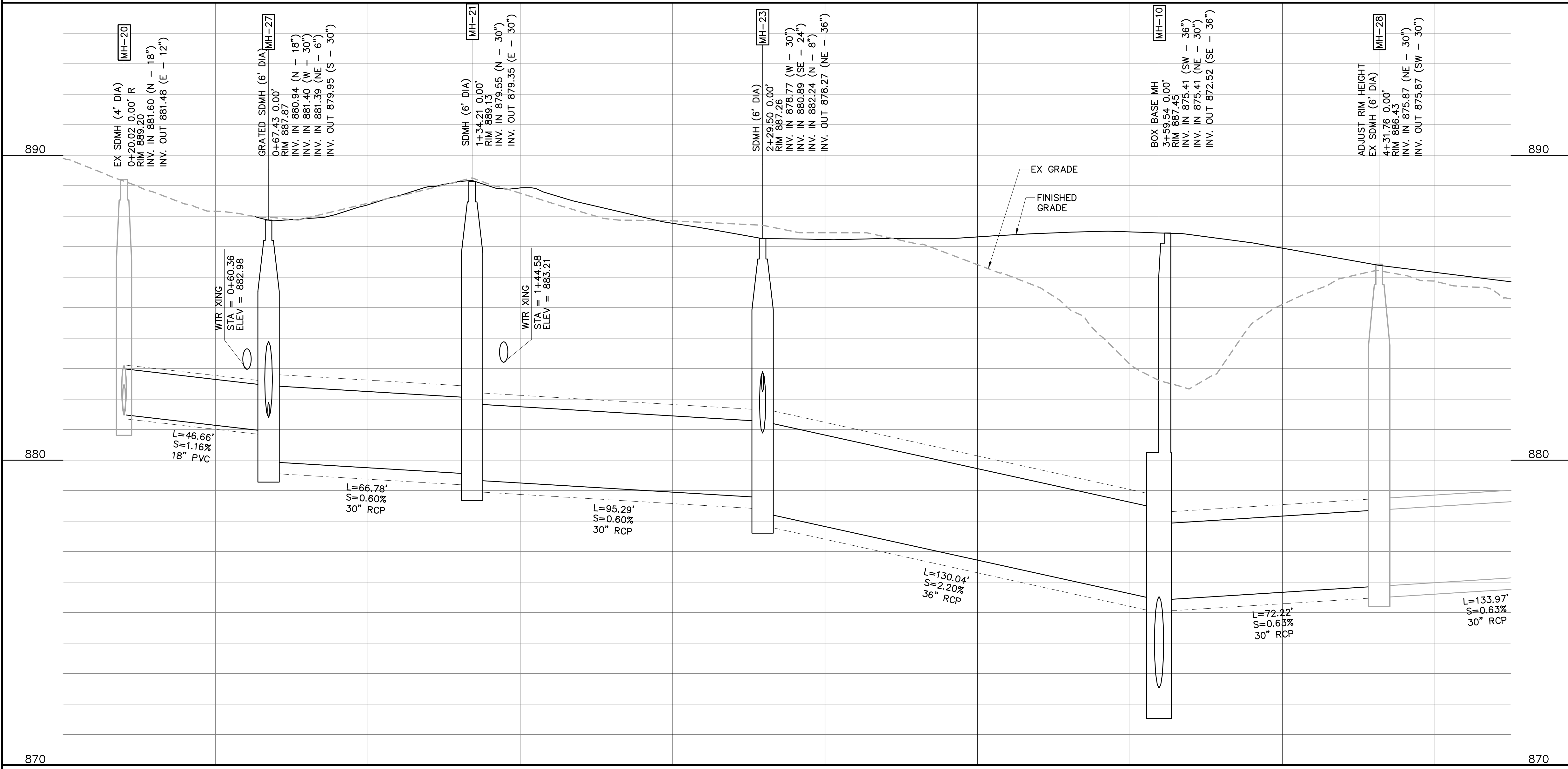


NOTES:

- CONTRACTOR TO ENSURE CONCRETE WALLS OF LIFT STATION ARE NOT IMPACTED DURING CONSTRUCTION.
- CONTRACTOR TO VERIFY LOCATION OF UTILITIES PRIOR TO CONSTRUCTION.
- ALIGNMENTS ARE TAKEN FROM THE CENTERLINE OF STRUCTURES AND PIPES.
- REFER TO SHEET A310 AND SD501 & SD502 FOR FOUNDATION DRAIN CONSTRUCTION DETAILS.
- REFER TO SHEET S602 FOR RETAINING WALL DETAILS.
- STORMWATER FACILITY RETAINING WALLS TO BE WATERPROOFED TO ELIMINATE EXCESS WATER IN SOILS ADJACENT TO THE EXISTING FLOOD WALL. NEOPRENE SEALS REQUIRED BETWEEN WALLS AND CONCRETE SLABS.
- CONTRACTOR TO REFER TO GEOTECHNICAL REPORT FOR PAVEMENT DESIGN, SOILS TYPES AND COMPACTIONS FOR AREAS BEHIND AND BELOW RETAINING WALLS AND BACKFILL SPECIFICATIONS.

LEGEND

- EX. MINOR CONTOUR
- EX. MAJOR CONTOUR
- NEW MINOR CONTOUR
- NEW MAJOR CONTOUR
- EASEMENT
- NEW BUILDING BOUNDARY
- EX. WALL
- EX. FENCE
- NEW WATER MAIN
- NEW WATER VALVE
- NEW FIRE HYDRANT
- NEW SANITARY SEWER MAIN
- NEW STORM DRAIN
- NEW STORM DRAIN INLET
- SANITARY SEWER MANHOLE NUMBER
- STORM DRAINAGE MANHOLE NUMBER
- EX. FORCE MAIN
- EX. GAS MAIN
- EX. WATER MAIN
- EX. WATER VALVE
- EX. FIRE HYDRANT
- EX. WATER SPIGOT
- EX. SANITARY SEWERS
- EX. STORM DRAIN
- EX. STORM DRAIN INLET
- EX. POWER POLE
- EX. UNDERGROUND ELECTRIC
- EX. ELECTRIC TRANSFORMER
- EX. UNDERGROUND TELEPHONE
- EX. FENCE
- EX. LIGHT POLE
- EX. LIFT STATION
- EX. POST
- EX. BOLLARD
- EX. CONTROL PANEL
- EX. ELECTRIC MANHOLE
- EX. DECIDUOUS TREE
- EX. CONIFEROUS TREE
- EX. CATCH BASIN
- NEW LIGHT POLE
- NEW FIRE HYDRANT
- NEW BOLLARD

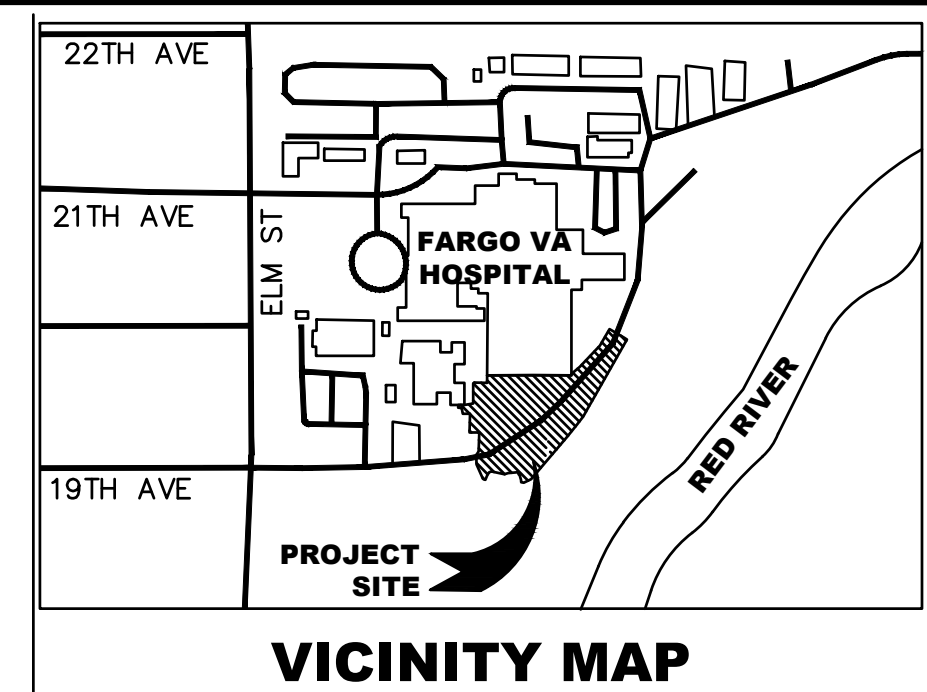
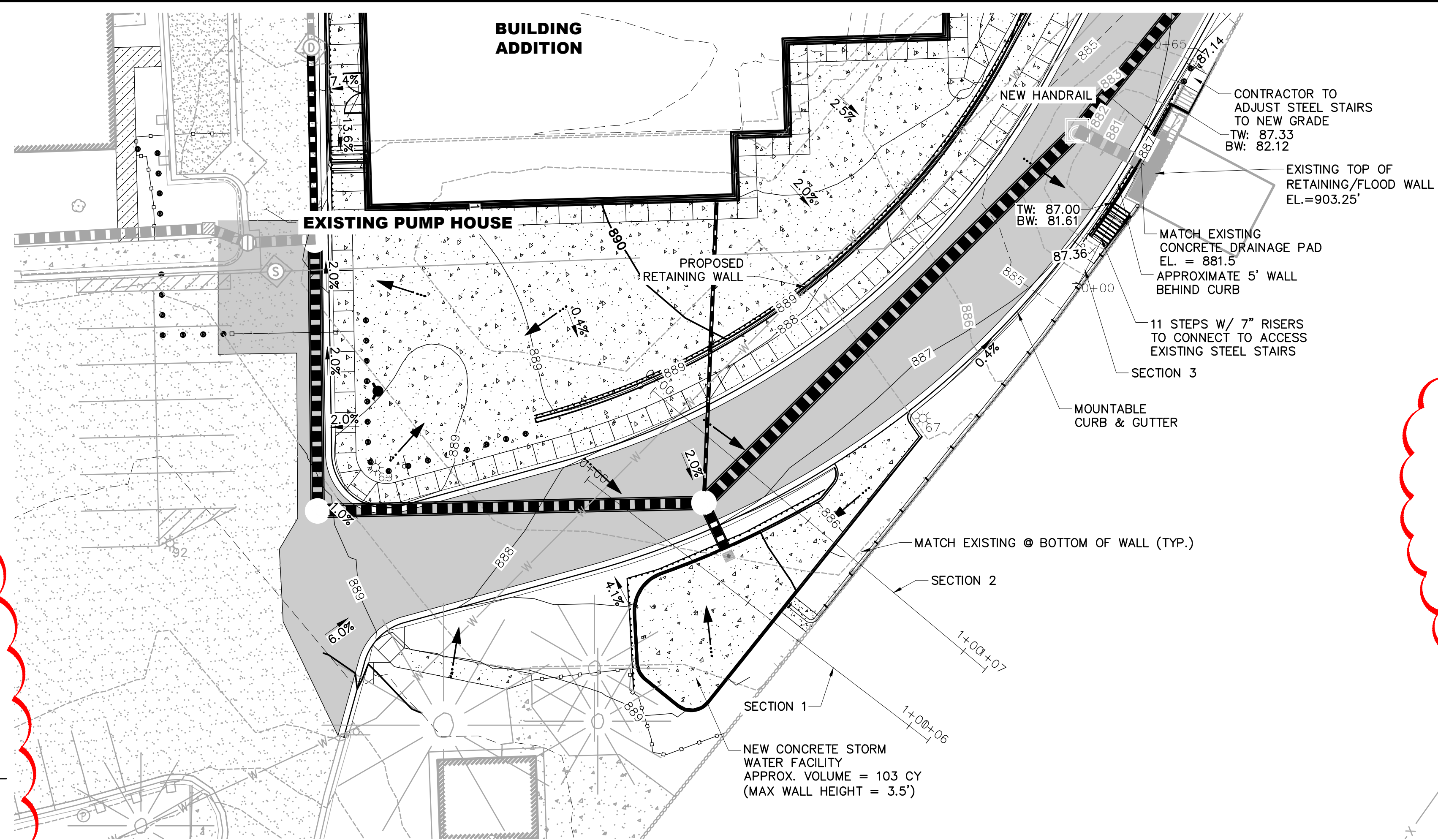


<b>Revisions:</b> Number Associated with Clouded Area		<b>CONSULTANTS:</b> <b>Calibre</b> CALIBRE 9090 S RIDGELINE BLVD, SUITE 105 HIGHLANDS RANCH, COLORADO 80129 PHONE (303) 730-0434 <b>Albertson Engineering Inc.</b> ALBERTSON ENGINEERING, INC. 315 NORTH MAIN AVENUE, SUITE 200 SIOUX FALLS, SOUTH DAKOTA 57104 PH: (605) 274-0880 <b>SUMMIT</b> FIRE PROTECTION SUMMIT FIRE CONSULTING 575 MINNEHAHA AVE WEST ST. PAUL, MINNESOTA 55103 (612) 387-7050		<b>ARCHITECT</b> <b>FOURFRONT</b> DESIGN INC. FOURFRONT DESIGN, INC. 517 7TH STREET RAPID CITY, SOUTH DAKOTA 57701 PH: (605) 342-9470 FAX: (605) 342-2377 WWW.FOURFRONTDESIGN.COM		<b>Drawing Title</b> STORM SEWER PLAN AND PROFILE <b>Approved: Project Director</b> FARGO VAHCS		<b>Project Title</b> EXPAND BLDG. 1 FOR PRIMARY CARE <b>Location</b> 2101 ELM STREET FARGO, ND 58102 <b>Date</b> 11/16/2021 <b>Checked</b> JAG <b>Drawn</b> WFP		<b>Project Number</b> 437-315 <b>Building Number</b> 1 <b>Drawing Number</b> CU101 Dwg. 13 of 128		<b>Office of Construction and Facilities Management</b> <b>Department of Veterans Affairs</b>	
--	--	---	--	--	--	--	--	--	--	---	--	--	--



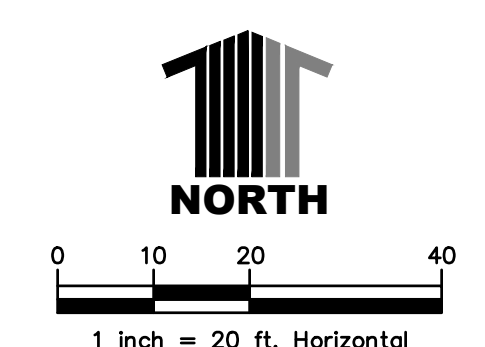
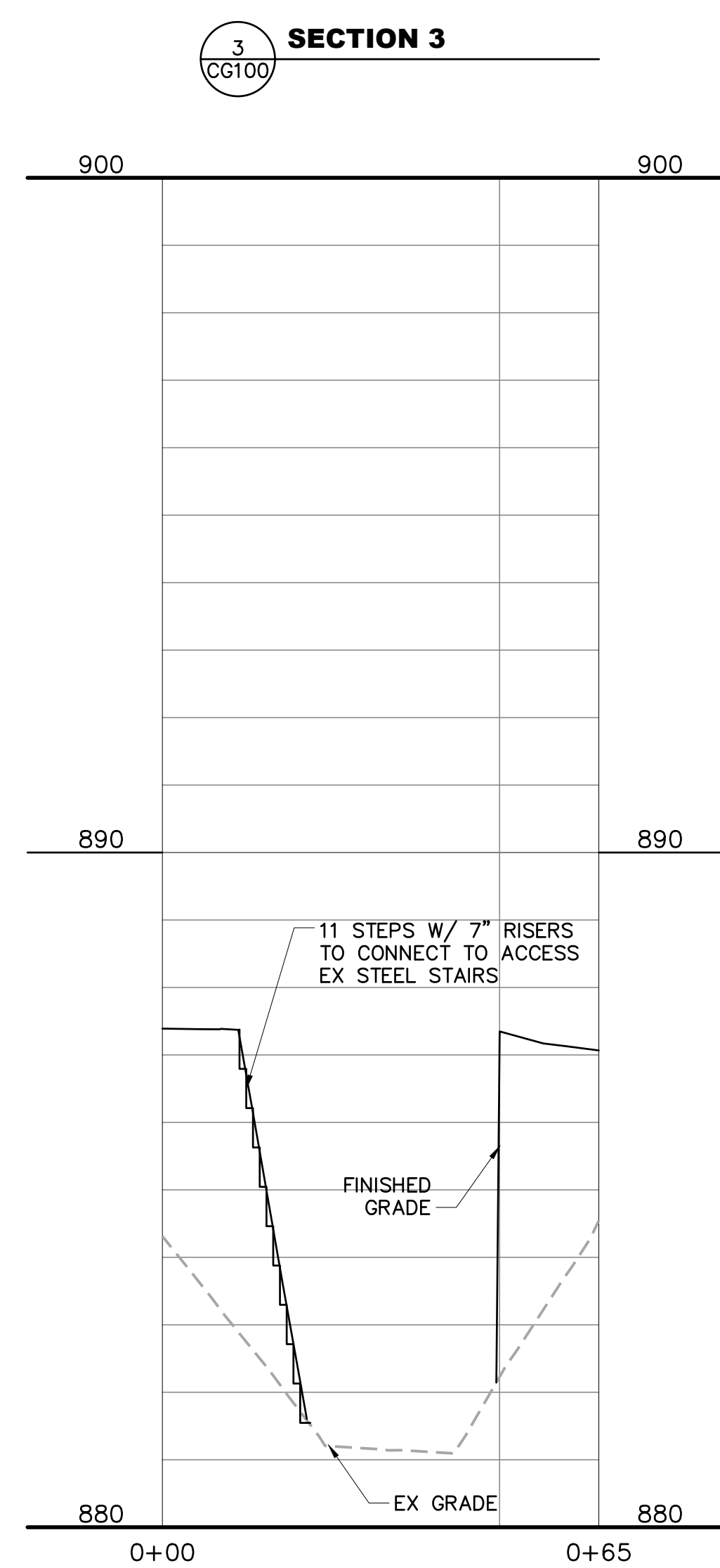
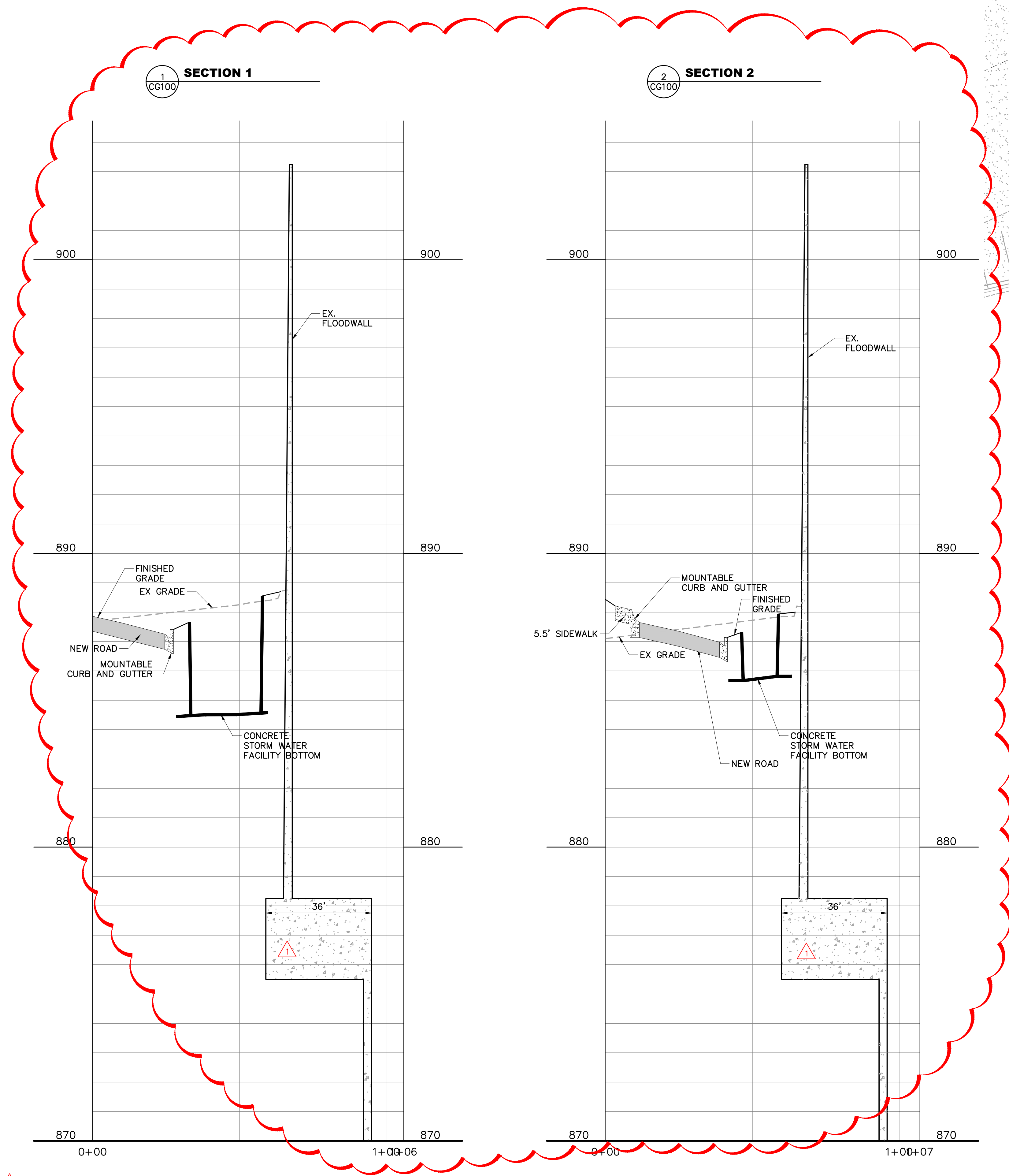






- ### NOTES
- CONTRACTOR TO PROVIDE A PEDESTRIAN ACCESS ROUTE FROM PARKING LOTS TO BUILDING ENTRANCES DURING CONSTRUCTION ACTIVITIES.
  - CONTRACTOR TO PROVIDE SIGNAGE AT THE FACILITY ENTRANCE AND JOB SITE DIRECTING PEOPLE AND VEHICLES DURING CONSTRUCTION ACTIVITIES.
  - CONTRACTOR TO VERIFY LOCATION OF UTILITIES PRIOR TO CONSTRUCTION.
  - CONTRACTOR TO DAYLIGHT STORMWATER FACILITY AND PUMPHOUSE RETAINING WALL PERIMETER DRAINS INTO ADJACENT STORM MANHOLES.
  - CONTRACTOR TO OUTFALL PERIMETER DRAINS IN LANDSCAPE RETAINING WALL THROUGH FRONT OF WALL SPACED AT 30' ON CENTER.
  - REFER TO SHEET S602 FOR RETAINING WALL DETAILS.
  - CONTRACTOR TO REFER TO GEOTECHNICAL REPORT FOR PAVEMENT DESIGN, RETAINING WALL SOIL PARAMETERS AND BACKFILL SPECIFICATIONS.

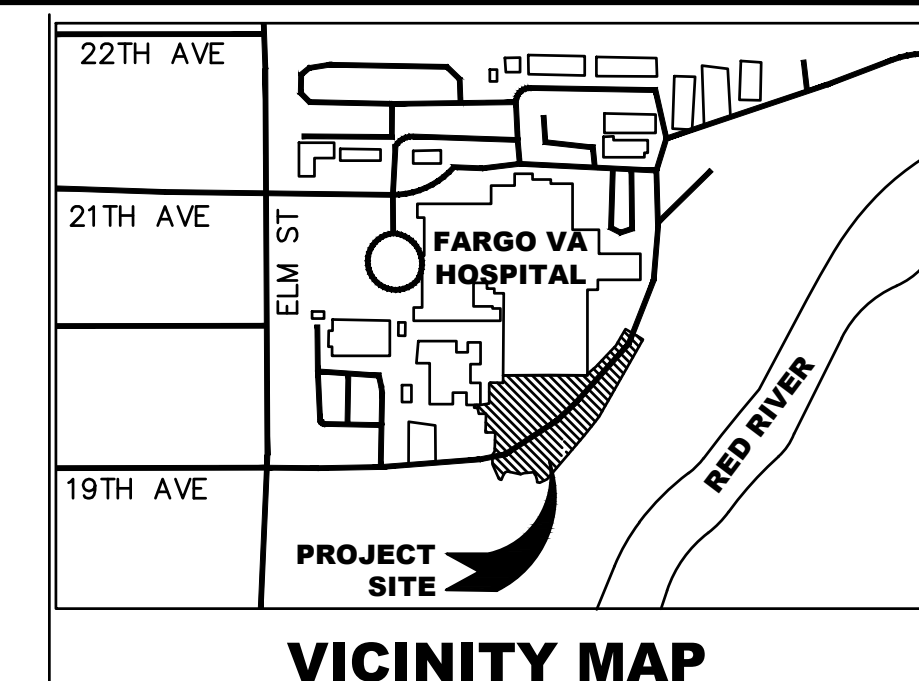
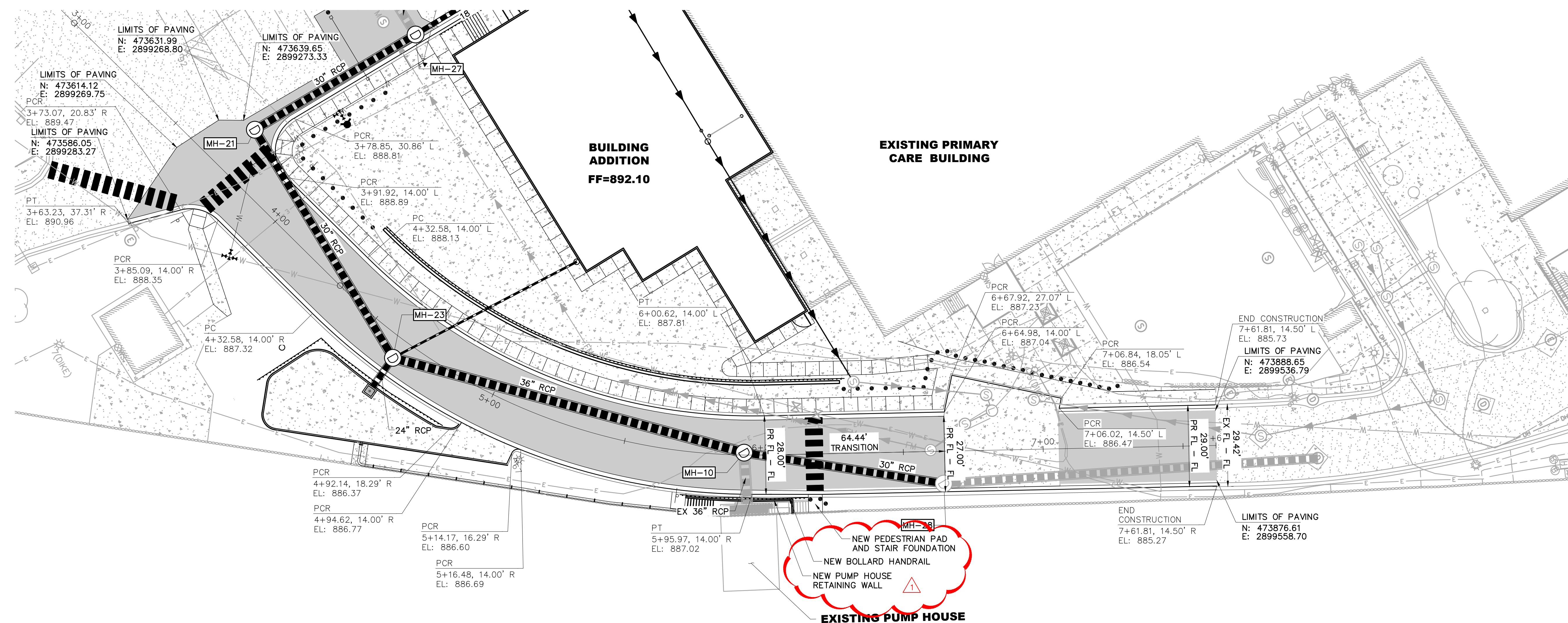
- ### LEGEND
- EX. MINOR CONTOUR ----- 9.31
  - EX. MAJOR CONTOUR ----- 9.30
  - NEW MINOR CONTOUR ----- 9.31
  - NEW MAJOR CONTOUR ----- 9.30
  - EASEMENT -----
  - NEW BUILDING BOUNDARY -----
  - EX. WALL -----
  - EX. FENCE ----- X ----- X
  - NEW FIRE HYDRANT -----
  - NEW SANITARY SEWER MAIN -----
  - NEW STORM DRAIN -----
  - NEW STORM DRAIN INLET -----
  - STORM DRAINAGE MANHOLE NUMBER [MH-5]
  - EX. FIRE HYDRANT -----
  - EX. SANITARY SEWERS -----
  - EX. STORM DRAIN -----
  - EX. POWER POLE -----
  - EX. UNDERGROUND ELECTRIC ----- E -----
  - EX. ELECTRIC TRANSFORMER -----
  - EX. UNDERGROUND TELEPHONE ----- T -----
  - EX. FENCE ----- X ----- X ----- X
  - EX. LIGHT POLE -----
  - EX. LIFT STATION -----
  - EX. POST -----
  - EX. BOLLARD -----
  - EX. CONTROL PANEL -----
  - EX. ELECTRIC MANHOLE -----
  - EX. DECIDUOUS TREE -----
  - EX. CONIFEROUS TREE -----
  - EX. CATCH BASIN -----
  - NEW LIGHT POLE -----
  - NEW FIRE HYDRANT -----
  - NEW BOLLARD -----
  - SLOPE LABEL ----- 3.2%
  - SPOT ELEVATION ----- EL: 932.27
  - TOP OF SIDEWALK SPOT ELEVATION ----- TSW: 932.27
  - TOP OF WALL SPOT ELEVATION ----- TW: 932.27
  - BOTTOM OF WALL SPOT ELEVATION ----- BW: 932.27



## CONSTRUCTION DOCUMENTS

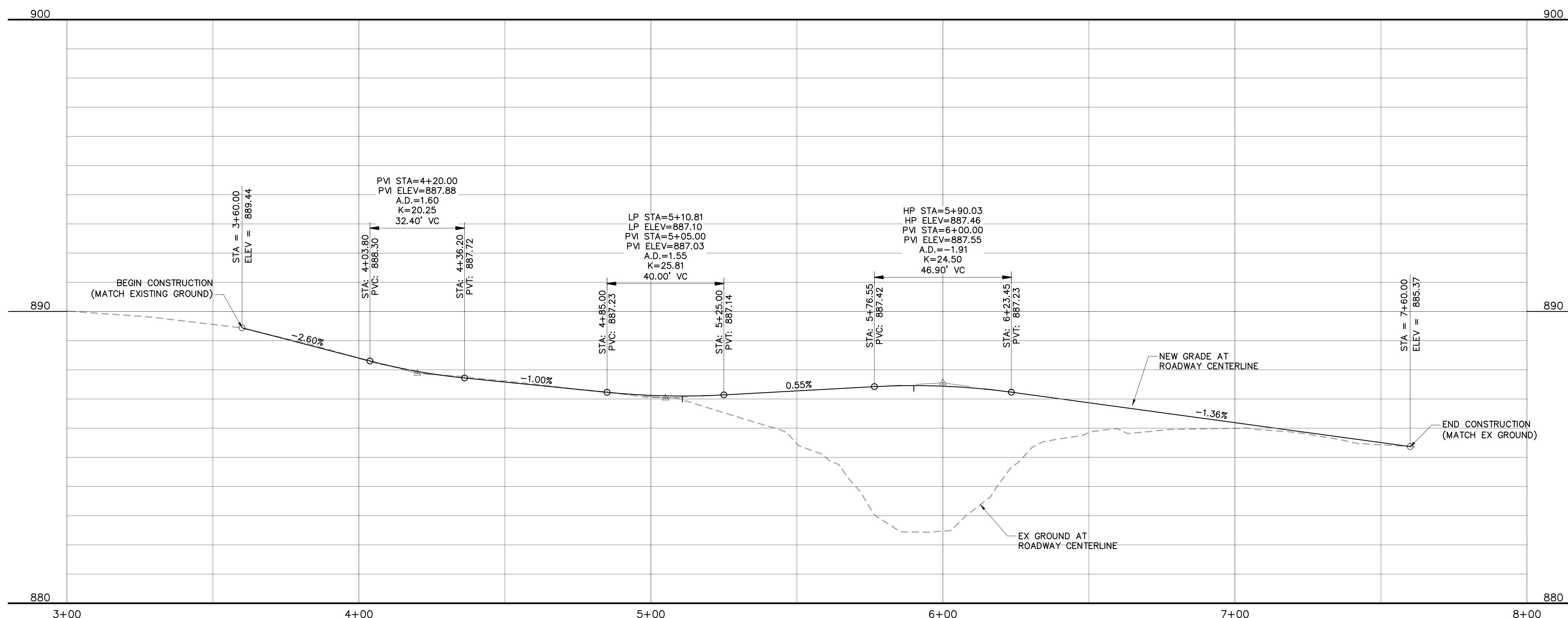
<b>Revision Number Associated with Clouded Area</b>		<b>CONSULTANTS:</b>		<b>ARCHITECT</b>		<b>Drawing Title</b>		<b>Project Title</b>		<b>Project Number</b>		<b>Office of Construction and Facilities Management</b>	
		<b>Calibre</b> CALIBRE 9090 S RIDGELINE BLVD, SUITE 105 HIGHLANDS RANCH, COLORADO 80129 PHONE (303) 730-0434		<b>Albertson Engineering Inc.</b> ALBERTSON ENGINEERING, INC. 315 NORTH MAIN AVENUE, SUITE 200 SIOUX FALLS, SOUTH DAKOTA 57104 PH: (605) 274-0880  SUMMIT FIRE CONSULTING 575 MINNEHAHA AVE WEST ST. PAUL, MINNESOTA 55103 (612) 387-7050		<b>FOURFRONT DESIGN INC.</b> FOURFRONT DESIGN, INC. 517 7TH STREET RAPID CITY, SOUTH DAKOTA 57701 PH: (605) 342-9470 FAX: (605) 342-2377 WWW.FOURFRONTDESIGN.COM		<b>GRADING CROSS SECTIONS</b>		<b>EXPAND BLDG. 1 FOR PRIMARY CARE</b>			
<b>ADDENDUM #1</b> Revisions:		01/04/23 Date				<b>Approved: Project Director</b> FARGO VAHCS		<b>Location</b> 2101 ELM STREET FARGO, ND 58102		<b>Drawing Number</b> CG101		<b>Dwg. 17 of 128</b>	
						<b>Date</b> 11/16/2021		<b>Checked</b> JAG		<b>Drawn</b> WFP			





- NOTES:**
- CONTRACTOR TO ENSURE CONCRETE WALLS OF LIFT STATION ARE NOT IMPACTED DURING CONSTRUCTION

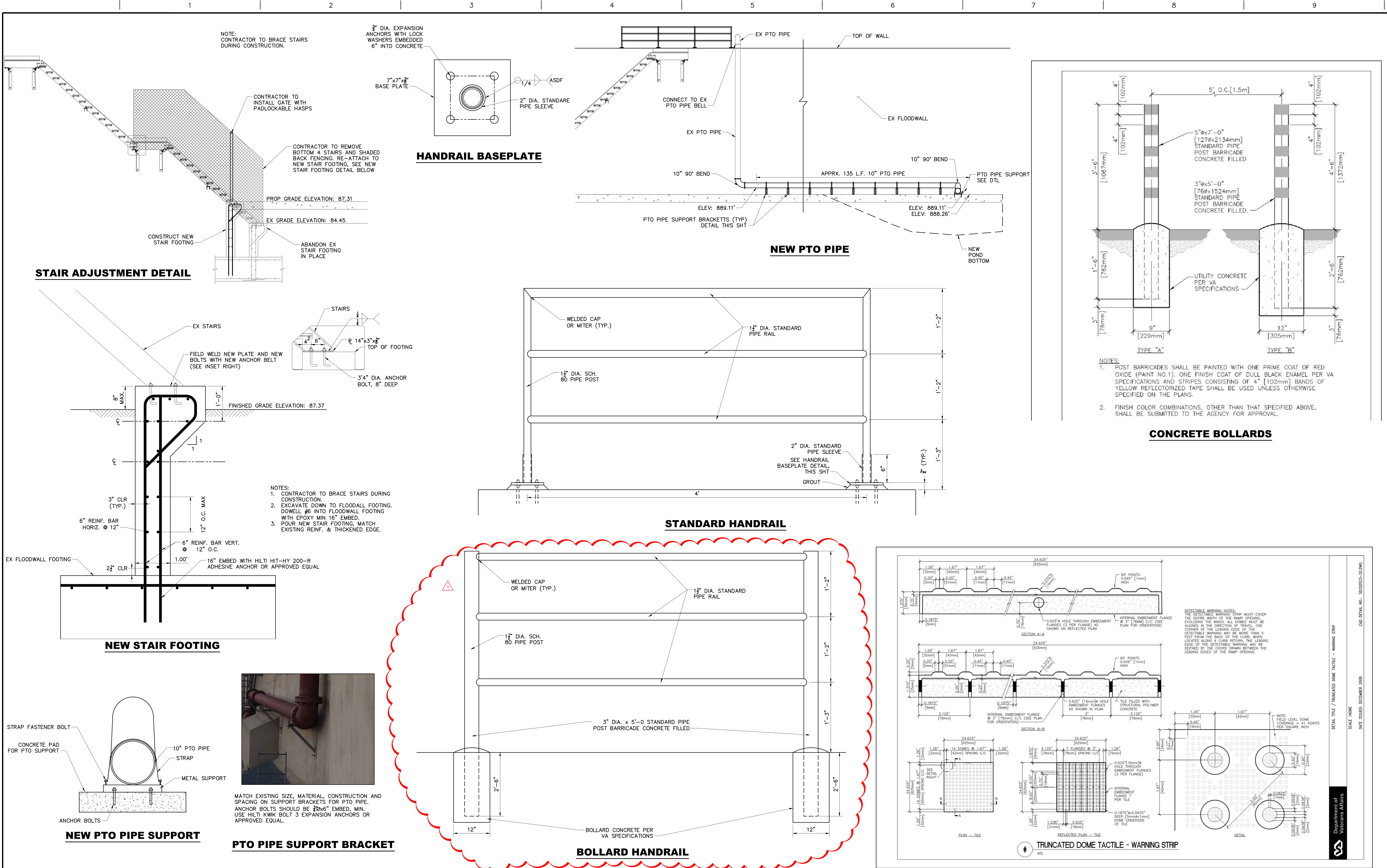
LEGEND	
EX. MINOR CONTOUR	----- 931
EX. MAJOR CONTOUR	----- 930
NEW MINOR CONTOUR	----- 931
NEW MAJOR CONTOUR	----- 930
EASEMENT	-----
NEW BUILDING BOUNDARY	-----
EX. WALL	-----
EX. FENCE	-----
NEW FIRE HYDRANT	-----
NEW SANITARY SEWER MAIN	-----
NEW STORM DRAIN	-----
NEW STORM DRAIN INLET	-----
STORM DRAINAGE MANHOLE NUMBER	MH-5
EX. FIRE HYDRANT	-----
EX. SANITARY SEWERS	-----
EX. STORM DRAIN	-----
EX. POWER POLE	-----
EX. UNDERGROUND ELECTRIC	-----
EX. ELECTRIC TRANSFORMER	-----
EX. UNDERGROUND TELEPHONE	-----
EX. FENCE	-----
EX. LIGHT POLE	-----
EX. LIFT STATION	-----
EX. BOLLARD	-----
EX. CONTROL PANEL	-----
EX. ELECTRIC MANHOLE	-----
EX. DECIDUOUS TREE	-----
EX. CONIFEROUS TREE	-----
EX. CATCH BASIN	-----
NEW LIGHT POLE	-----
NEW FIRE HYDRANT	-----
NEW BOLLARD	-----
SLOPE LABEL	3.2%
SPOT ELEVATION	EL: 932.27
TOP OF SIDEWALK	TSW: 932.27
SPOT ELEVATION	TW: 932.27
TOP OF WALL	-----
SPOT ELEVATION	BW: 932.27
BOTTOM OF WALL	-----
SPOT ELEVATION	-----



## CONSTRUCTION DOCUMENTS

<b>CONSULTANTS:</b> <b>Calibre</b> 9090 S RIDGELINE BLVD, SUITE 105 HIGHLANDS RANCH, COLORADO 80129 PHONE (303) 730-0434 <b>Albertson Engineering Inc.</b> ALBERTSON ENGINEERING, INC. 315 NORTH MAIN AVENUE, SUITE 200 SIOUX FALLS, SOUTH DAKOTA 57104 PH: (605) 274-0880 <b>Summit Fire Protection</b> SUMMIT FIRE CONSULTING 575 MINNEHAHA AVE WEST ST. PAUL, MINNESOTA 55103 (612) 387-7050		<b>ARCHITECT</b> <b>FOURFRONT DESIGN INC.</b> 517 7TH STREET RAPID CITY, SOUTH DAKOTA 57701 PH: (605) 342-9470 FAX: (605) 342-2377 WWW.FOURFRONTDESIGN.COM		<b>Drawing Title</b> ROADWAY PLAN AND PROFILE <b>Approved: Project Director</b> FARGO VAHCS		<b>Project Title</b> EXPAND BLDG. 1 FOR PRIMARY CARE <b>Location</b> 2101 ELM STREET FARGO, ND 58102 <b>Date</b> 11/16/2021 <b>Checked</b> JAG <b>Drawn</b> WFP		<b>Project Number</b> 437-315 <b>Building Number</b> 1 <b>Drawing Number</b> CG102 Dwg. 18 of 128		<b>Office of Construction and Facilities Management</b> <b>Department of Veterans Affairs</b>	
--	--	--	--	--	--	---	--	---	--	--	--





CONSTRUCTION DOCUMENTS

Revision Number Associated with Clouded Area																																																																																																																																																																																																																																																																																																																																																																																																																																																																																																																																																																																																																																																																																																																																																																																																																																																																																																																																																																																																																																																																																																																																																																																																																																																																																																	
--	--	--	--	--	--	--	--	--	--	--	--	--	--	--	--	--	--	--	--	--	--	--	--	--	--	--	--	--	--	--	--	--	--	--	--	--	--	--	--	--	--	--	--	--	--	--	--	--	--	--	--	--	--	--	--	--	--	--	--	--	--	--	--	--	--	--	--	--	--	--	--	--	--	--	--	--	--	--	--	--	--	--	--	--	--	--	--	--	--	--	--	--	--	--	--	--	--	--	--	--	--	--	--	--	--	--	--	--	--	--	--	--	--	--	--	--	--	--	--	--	--	--	--	--	--	--	--	--	--	--	--	--	--	--	--	--	--	--	--	--	--	--	--	--	--	--	--	--	--	--	--	--	--	--	--	--	--	--	--	--	--	--	--	--	--	--	--	--	--	--	--	--	--	--	--	--	--	--	--	--	--	--	--	--	--	--	--	--	--	--	--	--	--	--	--	--	--	--	--	--	--	--	--	--	--	--	--	--	--	--	--	--	--	--	--	--	--	--	--	--	--	--	--	--	--	--	--	--	--	--	--	--	--	--	--	--	--	--	--	--	--	--	--	--	--	--	--	--	--	--	--	--	--	--	--	--	--	--	--	--	--	--	--	--	--	--	--	--	--	--	--	--	--	--	--	--	--	--	--	--	--	--	--	--	--	--	--	--	--	--	--	--	--	--	--	--	--	--	--	--	--	--	--	--	--	--	--	--	--	--	--	--	--	--	--	--	--	--	--	--	--	--	--	--	--	--	--	--	--	--	--	--	--	--	--	--	--	--	--	--	--	--	--	--	--	--	--	--	--	--	--	--	--	--	--	--	--	--	--	--	--	--	--	--	--	--	--	--	--	--	--	--	--	--	--	--	--	--	--	--	--	--	--	--	--	--	--	--	--	--	--	--	--	--	--	--	--	--	--	--	--	--	--	--	--	--	--	--	--	--	--	--	--	--	--	--	--	--	--	--	--	--	--	--	--	--	--	--	--	--	--	--	--	--	--	--	--	--	--	--	--	--	--	--	--	--	--	--	--	--	--	--	--	--	--	--	--	--	--	--	--	--	--	--	--	--	--	--	--	--	--	--	--	--	--	--	--	--	--	--	--	--	--	--	--	--	--	--	--	--	--	--	--	--	--	--	--	--	--	--	--	--	--	--	--	--	--	--	--	--	--	--	--	--	--	--	--	--	--	--	--	--	--	--	--	--	--	--	--	--	--	--	--	--	--	--	--	--	--	--	--	--	--	--	--	--	--	--	--	--	--	--	--	--	--	--	--	--	--	--	--	--	--	--	--	--	--	--	--	--	--	--	--	--	--	--	--	--	--	--	--	--	--	--	--	--	--	--	--	--	--	--	--	--	--	--	--	--	--	--	--	--	--	--	--	--	--	--	--	--	--	--	--	--	--	--	--	--	--	--	--	--	--	--	--	--	--	--	--	--	--	--	--	--	--	--	--	--	--	--	--	--	--	--	--	--	--	--	--	--	--	--	--	--	--	--	--	--	--	--	--	--	--	--	--	--	--	--	--	--	--	--	--	--	--	--	--	--	--	--	--	--	--	--	--	--	--	--	--	--	--	--	--	--	--	--	--	--	--	--	--	--	--	--	--	--	--	--	--	--	--	--	--	--	--	--	--	--	--	--	--	--	--	--	--	--	--	--	--	--	--	--	--	--	--	--	--	--	--	--	--	--	--	--	--	--	--	--	--	--	--	--	--	--	--	--	--	--	--	--	--	--	--	--	--	--	--	--	--	--	--	--	--	--	--	--	--	--	--	--	--	--	--	--	--	--	--	--	--	--	--	--	--	--	--	--	--	--	--	--	--	--	--	--	--	--	--	--	--	--	--	--	--	--	--	--	--	--	--	--	--	--	--	--	--	--	--	--	--	--	--	--	--	--	--	--	--	--	--	--	--	--	--	--	--	--	--	--	--	--	--	--	--	--	--	--	--	--	--	--	--	--	--	--	--	--	--	--	--	--	--	--	--	--	--	--	--	--	--	--	--	--	--	--	--	--	--	--	--	--	--	--	--	--	--	--	--	--	--	--	--	--	--	--	--	--	--	--	--	--	--	--	--	--	--	--	--	--	--	--	--	--	--	--	--	--	--	--	--	--	--	--	--	--	--	--	--	--	--	--	--	--	--	--	--	--	--	--	--	--	--	--	--	--	--	--	--	--	--	--	--	--	--	--	--	--	--	--	--	--	--	--	--	--	--	--	--	--	--	--	--	--	--	--	--	--	--	--	--	--	--	--	--	--	--	--	--	--	--	--	--	--	--	--	--	--	--	--	--	--	--	--	--	--	--	--	--	--	--	--	--	--	--	--	--	--	--	--	--	--	--	--	--	--	--	--	--	--	--	--	--	--	--	--	--	--	--	--	--	--	--	--	--	--	--	--	--	--	--	--	--	--	--	--	--	--	--	--	--	--	--	--	--	--	--	--	--	--	--	--	--	--	--	--	--	--	--	--	--	--	--	--	--	--	--	--	--	--	--	--	--	--	--	--	--	--	--	--	--	--	--	--	--	--	--	--	--	--	--	--	--	--	--	--	--	--	--	--	--	--	--	--	--	--	--	--	--	--	--	--	--	--	--	--	--	--	--	--	--	--	--	--	--	--	--	--	--	--	--	--	--	--	--	--	--	--	--	--	--	--	--	--	--	--	--	--	--	--	--	--	--	--	--	--	--	--	--	--	--	--	--	--	--	--	--	--	--	--	--	--	--	--	--	--	--	--	--	--	--	--	--	--	--	--	--	--	--	--	--	--	--	--	--	--	--	--	--	--	--	--	--	--	--	--	--	--	--	--	--	--	--	--	--	--	--	--	--	--	--



