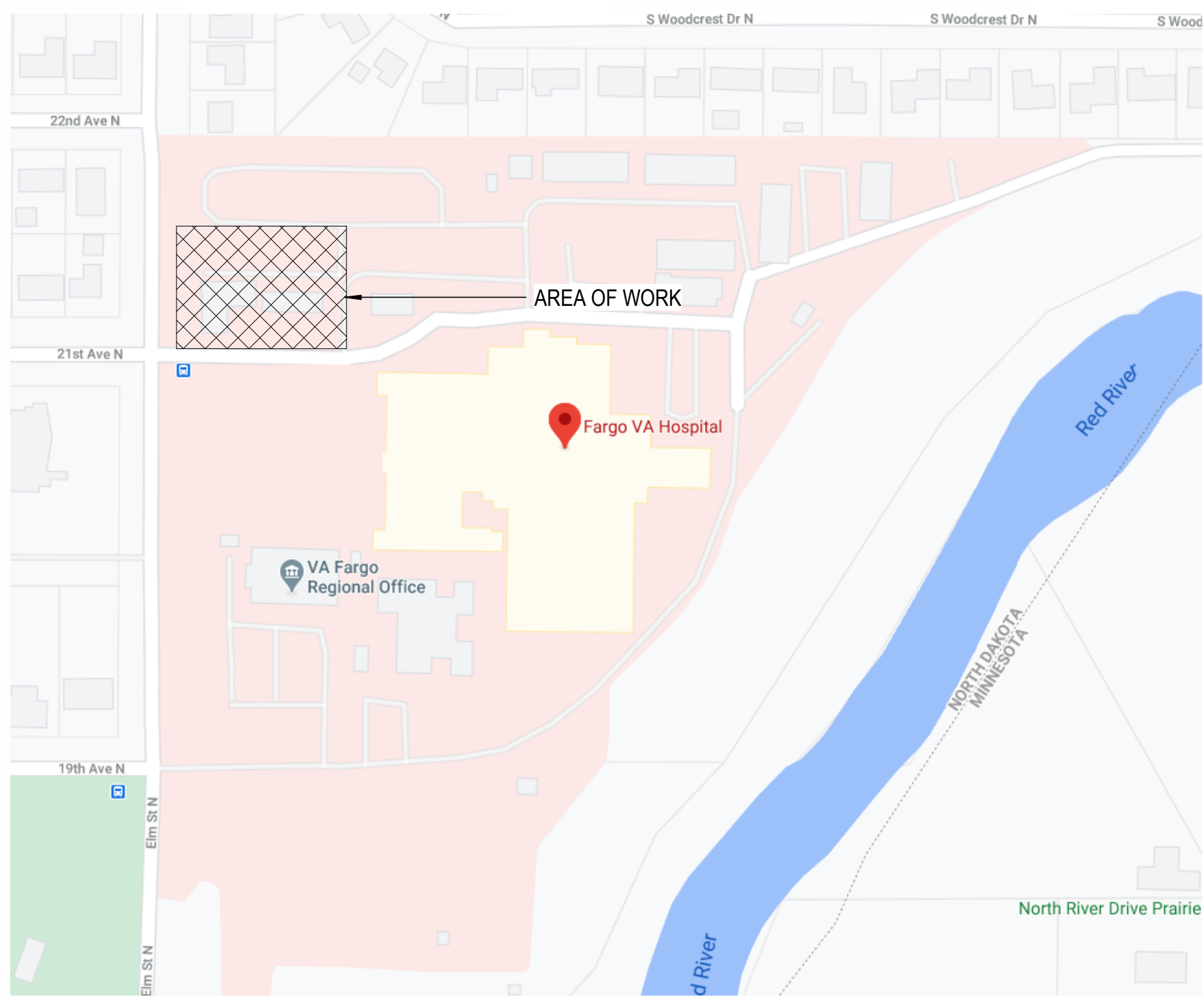


FARGO VA HEALTH CARE SYSTEM
2101 ELM STREET, FARGO, ND 58102
VA PROJECT #: 437-316
CONSTRUCT MENTAL HEALTH OUTPATIENT BLDG 52 ADDITION

AREA OF WORK



RENDERED IMAGE



SHEET INDEX

SHEET NO.	SHEET NAME	SHEET NO.	SHEET NAME	SHEET NO.	SHEET NAME
GENERAL		ARCHITECTURAL		PLUMBING	
GI001	COVER	AD111	ARCHITECTURAL DEMOLITION PLAN - LEVEL 1	P-001	PLUMBING ABBREVIATIONS, SYMBOLS, & LEGENDS
GI002	GENERAL INFORMATION AND ABBREVIATIONS	AS101	ARCHITECTURAL SITE PLAN	PQ601	EQUIPMENT & FIXTURE SCHEDULES
GI003	ACCESSIBILITY STANDARDS	AE111	ARCHITECTURAL DIMENSION FLOOR PLAN - LEVEL 1	PP111	DOMESTIC WATER PLAN - LEVEL 1
GI004	PHASING PLAN	AE111a	ARCHITECTURAL ANNOTATION FLOOR PLAN - LEVEL 1	PP112	DOMESTIC WATER PLAN - LEVEL 2
GI010	LIFE SAFETY - GENERAL	AE112	ARCHITECTURAL DIMENSION FLOOR PLAN - LEVEL 2	PP113	DOMESTIC WATER PLAN - PENTHOUSE
GI101	LIFE SAFETY PLAN - LEVEL 1	AE112a	ARCHITECTURAL ANNOTATION FLOOR PLAN - LEVEL 2	PP901	DOMESTIC WATER RISER DIAGRAM
GI102	LIFE SAFETY PLAN - LEVEL 2	AE113	ARCHITECTURAL FLOOR PLAN - PENTHOUSE	PW111	DRAIN WASTE VENT PLAN - LEVEL 1
GI103	LIFE SAFETY PLAN - PENTHOUSE	AE114	ARCHITECTURAL ROOF PLAN	PW112	DRAIN WASTE VENT PLAN - LEVEL 2
CIVIL		AE121	ARCHITECTURAL RCP - LEVEL 1	PW113	DRAIN WASTE VENT PLAN - PENTHOUSE
CD101	CIVIL EXISTING SITE CONDITIONS DEMOLITION PLAN	AE122	ARCHITECTURAL RCP - LEVEL 2	PW901	DRAIN WASTE VENT RISER DIAGRAM
CD102	CIVIL EXISTING CONDITIONS DEMOLITION UTILITY PLAN	AE123	ARCHITECTURAL RCP - PENTHOUSE	MECHANICAL	
CU101	UTILITY PLAN	AF141	ARCHITECTURAL FINISH AND SIGNAGE PLAN - LEVEL 1	M-001	MECHANICAL ABBREVIATIONS & NOTES
CG101	GRADING PLAN	AF142	ARCHITECTURAL FINISH AND SIGNAGE PLAN - LEVEL 2	M-002	MECHANICAL SYMBOLS
CG102	EROSION CONTROL PLAN	AE211	ARCHITECTURAL EXTERIOR ELEVATIONS	MQ601	EQUIPMENT SCHEDULES
CS101	SITE PLAN - PAVING	AE212	ARCHITECTURAL EXTERIOR ELEVATIONS	MQ602	EQUIPMENT SCHEDULES
CS102	SITE PLAN - DIMENSIONS AND SIGNS	AE311	ARCHITECTURAL BUILDING SECTIONS	MI111	INSTRUMENTATION PLAN - LEVEL 1
CS103	SITE DETAILS	AE312	ARCHITECTURAL BUILDING SECTIONS	MI112	INSTRUMENTATION PLAN - LEVEL 2
LANDSCAPE		AE313	ARCHITECTURAL STAIR SECTIONS	MI113	INSTRUMENTATION PLAN - PENTHOUSE
L-001	LANDSCAPE ABBREVIATIONS & NOTES	AE321	ARCHITECTURAL WALL SECTIONS	M1701	CONTROLS & INSTRUMENTATION DETAILS
LS101	SITE LAYOUT PLAN	AE322	ARCHITECTURAL WALL SECTIONS VESTIBULE	M1702	CONTROLS & INSTRUMENTATION DETAILS
LS401	ENLARGED SITE LAYOUT PLANS	AE323	ARCHITECTURAL WALL SECTIONS CANOPIES	M1703	CONTROLS & INSTRUMENTATION DETAILS
LS501	LANDSCAPE DETAILS	AE324	ARCHITECTURAL WALL SECTIONS PENTHOUSE	MH111	HVAC PLAN - LEVEL 1
LI101	IRRIGATION PLAN	AE411	ARCHITECTURAL ENLARGED PLANS & INTERIOR ELEVATIONS	MH112	HVAC PLAN - LEVEL 2
LP101	OVERALL PLANTING PLAN	AE412	ARCHITECTURAL ENLARGED PLANS & INTERIOR ELEVATIONS	MH113	HVAC PLAN - PENTHOUSE
LP401	ENLARGED PLANTING PLAN	AE413	ARCHITECTURAL ENLARGED PLANS & INTERIOR ELEVATIONS	MP111	PIPING PLAN - LEVEL 1
LP501	PLANTING DETAILS	AE414	ARCHITECTURAL ENLARGED PLANS & INTERIOR ELEVATIONS	MP112	PIPING PLAN - LEVEL 2
LK501	CONCEPTUAL RENDERINGS	AE415	ARCHITECTURAL ENLARGED PLANS & INTERIOR ELEVATIONS	MP113	PIPING PLAN - PENTHOUSE
STRUCTURAL		AE416	ARCHITECTURAL ENLARGED STAIR PLANS	MK301	MECHANICAL SECTIONS
S-001	STRUCTURAL GENERAL NOTES	AE417	ARCHITECTURAL ENLARGED ELEVATOR PLANS	MK501	TYPICAL DETAILS
S-002	STRUCTURAL GENERAL NOTES	AE421	ARCHITECTURAL WINDOW AND LOUVER TYPES	MK502	TYPICAL DETAILS
S-003	SPECIAL INSPECTIONS SCHEDULE	AE422	ARCHITECTURAL INTERIOR WINDOW TYPES AND DETAILS	MK503	TYPICAL DETAILS
SD110	STRUCTURAL DEMOLITION PLAN	AE431	ARCHITECTURAL CASEWORK SECTIONS	ELECTRICAL	
S-110	STRUCTURAL FOUNDATION PLAN LEVEL 1	AE511	ARCHITECTURAL PLAN DETAILS	E-001	ELECTRICAL ABBREVIATIONS AND GENERAL NOTES
S-120	STRUCTURAL FRAMING PLAN LEVEL 2	AE521	ARCHITECTURAL CEILING DETAILS	E-002	ELECTRICAL SYMBOLS
S-130	STRUCTURAL FRAMING PLAN PENTHOUSE	AE531	ARCHITECTURAL ROOF AND ENVELOPE DETAILS	ED101	DEMOLITION TELECOM SITE PLAN
S-140	STRUCTURAL ROOF PLAN	AE532	ARCHITECTURAL ROOF AND ENVELOPE DETAILS	ED102	DEMOLITION ELECTRICAL SITE PLAN
S-210	FIRST LEVEL SLAB DROP & CONTROL/SAW JOINT PLAN	AE533	ARCHITECTURAL ROOF AND ENVELOPE DETAILS	EL101	ELECTRICAL LIGHTING SITE PLAN
S-211	SECOND LEVEL SLAB DROP PLAN	AE534	ARCHITECTURAL ROOF AND ENVELOPE DETAILS	EL111	ELECTRICAL LIGHTING RCP - LEVEL 1
S-220	SECOND LEVEL BEAM LOADING PLAN	AE541	ARCHITECTURAL FLOOR FINISH DETAILS	EL112	ELECTRICAL LIGHTING CONTROL RCP - LEVEL 1
S-221	THIRD LEVEL BEAM LOADING PLAN	AE542	ARCHITECTURAL INTERIOR DETAILS	EL121	ELECTRICAL LIGHTING RCP - LEVEL 2
S-222	HIGH ROOF BEAM LOADING PLAN	AE551	ARCHITECTURAL STAIR DETAILS	EL122	ELECTRICAL LIGHTING CONTROLS RCP - LEVEL 2
S-310	FRAME ELEVATIONS	AE561	ARCHITECTURAL WINDOW DETAILS	EL131	ELECTRICAL LIGHTING PLAN - PENTHOUSE
S-311	FRAME ELEVATIONS	AE562	ARCHITECTURAL CURTAIN WALL DETAILS	EP101	ELECTRICAL POWER SITE PLAN
S-312	FRAME ELEVATIONS	AE563	ARCHITECTURAL CURTAIN WALL DETAILS	EP111	ELECTRICAL POWER PLAN - LEVEL 1
S-313	FRAME ELEVATIONS	AE570	ARCHITECTURAL SITE DETAILS	EP121	ELECTRICAL POWER PLAN - LEVEL 2
S-314	FRAME ELEVATIONS	AE571	ARCHITECTURAL SITE DETAILS	EP131	ELECTRICAL POWER PLAN - PENTHOUSE
S-315	FRAME ELEVATIONS	AE611	ARCHITECTURAL WALL AND ROOF TYPE SCHEDULE	ET101	ELECTRICAL TELECOM SITE PLAN
S-320	BUILDING SECTIONS	AE621	ARCHITECTURAL DOOR SCHEDULES	ET111	ELECTRICAL TELECOM PLAN - LEVEL 1
S-321	BUILDING SECTIONS	AE631	ARCHITECTURAL INTERIOR SIGNAGE TYPES & SCHEDULE	ET121	ELECTRICAL TELECOM PLAN - LEVEL 2
S-322	BUILDING SECTIONS	AE641	ARCHITECTURAL ROOM FINISH SCHEDULE	EK101	LIGHTNING PROTECTION PLANS
S-323	BUILDING SECTIONS	AF941	INTERIOR MATERIALS & FINISH BOARD	EP401	ELECTRICAL POWER ENLARGED ELEVATOR EQUIPMENT ROOM
S-324	BUILDING SECTIONS	FIRE PROTECTION		ET401	ELECTRICAL TELECOM ENLARGED PLANS
S-325	BUILDING SECTIONS	FA001	FIRE ALARM GENERAL NOTES, SYMBOLS, AND LEGENDS	E-501	ELECTRICAL DETAILS
S-326	BUILDING SECTIONS	FX001	FIRE SUPPRESSION GENERAL NOTES, SYMBOLS, AND LEGENDS	E-502	ELECTRICAL DETAILS
S-327	BUILDING SECTIONS	FA111	FIRE ALARM PLAN - LEVEL 1	E-503	ELECTRICAL DETAILS
S-328	BUILDING SECTIONS	FA112	FIRE ALARM PLAN - LEVEL 2	E-504	ELECTRICAL DETAILS
S-329	BUILDING SECTIONS	FA113	FIRE ALARM PLAN - PENTHOUSE	E-505	ELECTRICAL DETAILS
S-330	BUILDING SECTIONS	FX111	HAZARD PLAN - LEVEL 1	E-601	ELECTRICAL EQUIPMENT SCHEDULE
S-510	ENLARGED DETAILS	FX112	HAZARD PLAN - LEVEL 2	E-602	ELECTRICAL ONE-LINE DIAGRAM
S-511	ENLARGED DETAILS	FX113	HAZARD PLAN - PENTHOUSE	E-603	ELECTRICAL PANEL SCHEDULES
S-512	ENLARGED DETAILS	FX121	FIRE SUPPRESSION RCP - LEVEL 1	E-604	LIGHTING SCHEDULES
S-513	ENLARGED DETAILS	FX122	FIRE SUPPRESSION RCP - LEVEL 2	E-605	LIGHTING CONTROL SCHEDULES
S-514	ENLARGED DETAILS	FX123	FIRE SUPPRESSION RCP - PENTHOUSE	E-606	LIGHTING CONTROL WIRING DIAGRAMS
S-515	ENLARGED DETAILS				
S-516	ENLARGED DETAILS				
S-610	LINTEL, COL. FOOTING, EMBED PLATES, AND BEAM SCHED				
S-611	SHEAR WALL DETAILS				
S-710	TRUSS ELEVATIONS				

CONTRACT DOCUMENTS SUBMISSION
FULLY SPRINKLERED

0	100% BID DOCUMENTS	05/26/2023	CONSULTANTS:	ARCHITECT/ENGINEERS:	STAMP:	Drawing Title	Phase	Project Title	Project Number
				VALHALLA ENGINEERING GROUP, LLC	PAUL A. SANDERS REGISTERED ARCHITECT A-381800762	COVER	100% BID DOCUMENTS	CONSTRUCT MENTAL HEALTH OUTPATIENT BLDG 52 ADDITION	437-316
				750 W HAMPODEN AVE SUITE 300 ENGLEWOOD, CO 80110 (720) 550-6307 WWW.VALHALLAENGINEERING.COM	U.S. Department of Veterans Affairs	Approved: Project Director		Location	Building Number
								2101 ELM STREET, FARGO, ND 58102	52
								Issue Date	Drawing Number
								05/26/2023	GI001
								Checked	DWG 1 of 188
								TW	
								Drawn	
								PJS	

1

2

3

4

5

6

7

8

9

10

GENERAL ABBREVIATIONS

A

ABA

ARCHITECTURAL BARRIERS ACT

AC

AIR CONDITIONING

ACP

ACOUSTICAL CEILING PANEL

ACST

ACOUSTICAL

ACT

ACOUSTICAL CEILING TILE

AD

AREA DRAIN

ADJ

ADJUSTABLE / ADJACENT

AFF

ABOVE FINISH FLOOR

AHU

AIR HANDLING UNIT

ALT

ALTERNATE

ALUM

ALUMINUM

ANOD

ANODIZED

AP

ACCESS PANEL

APC

ARCH PRECAST CONCRETE

APPROX

APPROXIMATE

ARCH

ARCHITECT / ARCHITECTURAL

ATTEN

ATTENUATION

AUTO

AUTOMATIC

AV

AUDIO / VISUAL

AVG

AVERAGE

AWP

ACOUSTICAL WALL PANEL

B

BD

BOARD

BID

BITUMINOUS

BLDG

BUILDING

BLKG

BLOCKING

BM

BENCH MARK / BEAM

BO

BOTTOM OF

BOC

BACK OF CURB

BOT

BOTTOM

BRG

BEARING

BRK

BRICK

BRKT

BRACKET

BSMT

BASEMENT

BTWN

BETWEEN

BVL

BEVELED

C

CAB

COURSE

CAB

CABINET

CAP

CAPACITY

CB

CATCH BASIN

CCTV

CLOSED CIRCUIT TV

CF

CUBIC FEET

CFM

CUBIC FEET PER MINUTE

CG

CORNER GUARD

CI

CAST IRON

CIP

CAST-IN-PLACE

CJ

CONTROL JOINT

CL

CENTER LINE

CLG

CEILING

CLOS

CLOSET

CLR

CLEAR / CLEARANCE

CMP

CORRUGATED METAL PIPE

CMT

CERAMIC MOSAIC TILE

CMU

CONCRETE MASONRY UNIT

CO

CLEAN OUT

COL

COLUMN

COMB

COMBINATION

CONC

CONCRETE

CONN

CONNECTION / CONNECT

CONST

CONSTRUCT / CONSTRUCTION

CONT

CONTINUOUS

CONTR

CONTRACTOR

COORD

COORDINATE

COR

CONTRACTING OFFICER'S REPRESENTATIVE

CORR

CORRIDOR / CORRUGATED

CP

CONCRETE PIPE

CPT

CARPET

CS

COUNTERSINK

CSMT

CASEMENT

CT

CERAMIC TILE

CU

CUBIC

CW

COLD WATER

D

DBL

DOUBLE

DEMO

DEMOLISH / DEMOLITION

DEPT

DEPARTMENT

DF

DRINKING FOUNTAIN

DH

DOUBLE HUNG

DIA

DIAMETER

DIAG

DIAGONAL

DIM

DIMENSION

DISP

DISPENSER

DMT

DEMOUNTABLE

DN

DOWN

DR

DOOR

DS

DOWNSPOUT

DTL

DETAIL

DWG

DRAWING

E

EA

EAST

EA

EACH

EF

EXHAUST FAN

EJ

EXPANSION JOINT

EL

ELEVATION

ELAST

ELASTOMERIC

ELEC

ELECTRICAL

ELEV

ELEVATOR

EM

EMERGENCY

EP

ELECTRICAL PANELBOARD

EQ

EQUAL

EQUIP

EQUIPMENT

ESC

ESCALATOR

EST

ESTIMATE

ETR

EXISTING TO REMAIN

EW

EACH WAY

EWC

ELECTRIC WATER COOLER

EXH

EXHAUST

EXIST

EXISTING

EXP

EXPANSION / EXPOSED

EXT

EXTERIOR

F

FA

FIRE ALARM

FAB

FABRIC

FB

FACE BRICK

FBO

FURNISHED BY OWNER

FD

FLOOR DRAIN

FDC

FIRE DEPARTMENT CONNECTION

FDN

FOUNDATION

FE

FIRE EXTINGUISHER

FEC

FIRE EXTINGUISHER CABINET

FF

FINISH FLOOR

FF&E

FIXTURES, FURNITURE & EQUIPMENT

FFE

FINISH FLOOR ELEVATION

FH

FIRE HYDRANT

FHC

FIRE HOSE CABINET

FIN

FINISH / FINISHED

FIXT

FIXTURE

FLG

FLOORING

FLR

FLOOR

FLUOR

FLUORESCENT

FOC

FACE OF CONCRETE

FOF

FACE OF FINISH

FOG

FACE OF GYPSUM BOARD / WALL

FOM

FACE OF MASONRY

FOS

FACE OF STUDS

FR

FIRE RATED

FRMG

FRAMING

FRP

FIBER REINFORCED PANEL

FS

FLOOR SINK

FT

FOOT/ FEET

FTG

FOOTING

FUR

FURRING

FUT

FUTURE

G

GA

GAUGE

GALV

GALVANIZED

GB

GRAB BAR

GC

GENERAL CONTRACTOR

GFRC

GLASS FIBER REINFORCED CONCRETE

GL

GLASS / GLAZING

GOVT

GOVERNMENT

GPM

GALLON PER MINUTE

GSF

GROSS SQUARE FEET

GWB

GYPSUM WALL BOARD

GYP

GYPSUM

H

H

HIGH

HB

HOSE BIBB

HC

HOLLOW CORE

HD

HEAD

HDBD

HARDBOARD

HDR

HEADER

HDW

HARDWARE

HDWD

HARDWOOD

HK

HOOK

HM

HOLLOW METAL

HORIZ

HORIZONTAL

HR

HOUR

HS

HIGH STRENGTH

HT

HEIGHT

HTG

HEATING

HTR

HEATER

HVAC

HEATING / VENTILATING / AIR CONDITIONING

HW

HOT WATER

HWH

HOT WATER HEATER

HYD

HYDRANT

I

IBC

INTERNATIONAL BUILDING CODE

ICRA

INFECTION CONTROL RISK ASSESSMENT

ID

INSIDE DIAMETER

ILSM

INTERIM LIFE SAFETY MEASURES

IN

INCH

INCL

INCLUDE (D), (ING)

INFO

INFORMATION

INST

INSTALL / INSTALLATION

INSUL

INSULATE / INSULATION

INT

INTERIOR

INV

INVERT

J

JAN

JANITOR

JB

JUNCTION BOX

JST

JOIST

JT

JOINT

K

KIT

KITCHEN

KO

KNOCKOUT

KPL

KICK PLATE

L

LAB

LABORATORY

LAM

LAMINATE (D)

LAV

LAVATORY

LBS

POUNDS

LF

LINEAR FOOT (FEET)

LH

LEFT HAND

LLH

LONG LEG HORIZONTAL

LLV

LONG LEG VERTICAL

LPT

LOW POINT

LRG

LARGE

LT

LIGHT

LTG

LIGHTING

LVR

LOUVER

LVT

LUXURY VINYL TILE

LWC

LIGHTWEIGHT CONCRETE

M

MAS

MASONRY

MAX

MAXIMUM

MBR

MEMBER

MDF

MEDIUM DENSITY FIBERBOARD

MECH

MECHANICAL

MED

MEDIUM

MEMB

MEMBRANE

MFG

MANUFACTURING

MFR

MANUFACTURER

MH

MANHOLE

MIN

MINIMUM

MISC

MISCELLANEOUS

MO

MASONRY OPENING

MOD

MODULAR

MTD

MOUNTED

MTG

MOUNTING

MTL

METAL

MULL

MULLION

N

NA

NORTH

NA

NOT APPLICABLE

NIC

NOT IN CONTRACT

NO

NUMBER

NOM

NOMINAL

NRC

NOISE REDUCTION COEFFICIENT

NSF

NET SQUARE FEET

NTS

NOT TO SCALE

O

OA

OVERALL

OC

ON CENTER

OD

OUTSIDE DIAMETER

OH

OVERHEAD / OPPOSITE HAND

OPNG

OPENING

OPP

OPPOSITE

OPR

OPERABLE

ORD

OVERFLOW ROOF DRAIN

OZ

OUNCE

P

PB

PUBLIC ADDRESS

PB

PUSH BUTTON

PC

PRECAST CONCRETE

PCF

POUNDS PER CUBIC FOOT

PERF

PERFORATE (D)

PERM

PERMANENT

PERP

PERPENDICULAR

PL

PLATE / PROPERTY LINE

PLAM

PLASTIC LAMINATE

PLAS

PLASTER

PLUMB

PLUMBING

PLYWD

PLYWOOD

PNL

PANEL

POLY

POLYETHYLENE

PR

PAIR

PREFAB

PREFABRICATE (D)

PREFIN

PREFINISHED

PRELIM

PRELIMINARY

PREP

PREPARE (D)

PROJ

PROJECT

PSF

POUNDS PER SQUARE FOOT

PSI

POUNDS PER SQUARE INCH

PT

PAINT / PORCELAIN TILE

PTN

PARTITION

PVC

POLYVINYL CHLORIDE

PVG

PAVING

Q

QT

QUARRY TILE

QTB

QUARRY TILE BASE

QTY

QUANTITY

R

RA

RISER / RADIUS

RA

RETURN AIR

RB

RESILIENT BASE

RCP

REFLECTED CEILING PLAN

RD

ROOF DRAIN

REF

REFRIGERATOR

REINF

REINFORCE (D), (ING)

REOD

REQUIRED

REV

REVISED/ REVISION

RFG

ROOFING

RH

RIGHT HAND

RM

ROOM

RO

ROUGH OPENING

ROW

RIGHT OF WAY

RR

RESTROOM

RSF

RESILIENT SHEET FLOORING

RTU

ROOF TOP UNIT

S

S

SOUTH

SAN

SANITARY SEWER

SC

SOLID CORE

SCH

SCHEDULE

SCRN

SCREEN

SECT

SECTION

SF

SQUARE FOOT (SQFT)

SHT

SHEET

SIM

SIMILAR

SOG

SLAB ON GRADE

SPEC

SPECIFICATION (S)

SPKLR

SPRINKLE

SPKR

SPEAKER

SQ

SQUARE

SS

STAINLESS STEEL

STC

SOUND TRANSMISSION COEFFICIENT

STD

STANDARD

STL

STEEL

STOR

STORAGE

STRUCT

STRUCTURE / STRUCTURAL

SUSP

SUSPENDED

SY

SQUARE YARD (SQ YD)

SYM

SYMMETRICAL / SYMBOL

SYS

SYSTEM

T

TEL

TREAD

TEL

TELEPHONE

TEMP

TEMPORARY / TEMPERED

TG

TONGUE & GROOVE

THK

THICK (NESS)

THRU

THROUGH

TKBD

TACK BOARD

TO

TOP OF

TOC

TOP OF CURB / CONCRETE

TOD

TOP OF DECK

TOM

TOP OF MASONRY

TOP

TOP OF PARAPET

TOR

TOP OF ROOF

TOS

TOP OF STEEL

TOW

TOP OF WALL

TPO

THERMOPLASTIC POLYOLEFIN

TRANSF

TRANSFORMER

TV

TELEVISION

TYP

TYPICAL

TZ

TERRAZZO

U

UH

UNIT HEATER

UNFIN

UNFINISHED

UNO

UNLESS NOTED OTHERWISE

V

VB

VAPOR BARRIER (VPR BR)

VCT

VINYL COMPOSITION TILE

VERT

VERTICAL

VEST

VESTIBULE

VHA

VETERANS HEALTH ADMINISTRATION

VIF

VERIFY IN FIELD

VNR

VENEER

VTR

VENT THROUGH ROOF

VWC

VINYL WALLCOVERING

W

W

WEST, WIDTH, WIDE

WI

WITH

WIN

WITHIN

W/O

WITHOUT

WB

WOOD BASE

WC

WATER CLOSET

WD

WOOD

WDW

WINDOW

WH

WALL HYDRANT / WATER HEATER

WP

WATERPROOFING / WORKING POINT

WR

WEATHER RESISTANT

WSF

WELDED SEAM SHEET FLOORING

WT

WEIGHT

WWF

WELDED WIRE FABRIC

X, Y, Z, MISC

&

AND

@

AT

XPS

EXTRUDED POLYSTYRENE

YD

YARD

FLOOR PLAN SYMBOLS LEGEND

DISCIPLINE DESIGNATOR (MAY NOT BE PRESENT IF CALLOUT AND TITLE ARE ON DRAWINGS WITHIN THE SAME DISCIPLINE)

LETTER OR NUMBER DESIGNATOR

DRAWING SEQUENCE NUMBER INDICATES WHERE TITLE IS LOCATED

SECTION, DETAIL, OR ELEVATION SYMBOL IDENTIFIERS

DETAIL NUMBER ON SHEET

SHEET NUMBER

SECTION CALLOUT EXAMPLE

DETAIL NUMBER ON SHEET

SHEET NUMBER

DETAIL CALLOUT EXAMPLE

DETAIL NUMBER ON SHEET

EXTERIOR

INTERIOR

SHEET NUMBER

ELEVATION CALLOUT EXAMPLE

VIEW NAME

1/8" = 1'-0"

DETAIL NAME

DRAWING SCALE

SECTION, DETAIL, OR ELEVATION TITLE EXAMPLE

MATCH LINE

NEW LINE TYPE

EXISTING LINE TYPE

DEMO LINE TYPE

DEMO HATCH TYPE

1-HR FIRE

2-HR FIRE

3-HR FIRE

4-HR FIRE

1-HR FIRE/SMOKE

2-HR FIRE/SMOKE

3-HR FIRE/SMOKE

4-HR FIRE/SMOKE

0-HR SMOKE

0.5-HR SMOKE

ROOM NAME

1234

ROOM TAG

A

COLUMN BUBBLE

1234

DOOR NUMBER TAG

A2

WALL TYPE TAG

W3

WINDOW TYPE TAG

R1

ROOF TYPE TAG

#

KEYNOTE

#####

FIXTURE KEYNOTE

#####

MATERIAL KEYNOTE

⚠

REVISION TAG

☒

CENTER LINE

BID ALTERNATES

A. SEE SPECIFICATIONS, SECTION 010000 FOR BID ALTERNATE INFORMATION.

MATERIALS LEGEND

EARTH / COMPACT FILL

GRAVEL / GRANULAR FILL

CONCRETE

SAND / MORTAR / PLASTER / CUT STONE

BRICK

CONCRETE MASONRY UNIT

STONE (ELEVATION)

CAST STONE

STEEL / METAL

FINISH WOOD

CONT FIRE RETARDANT WOOD BLOCKING / ROUGH FRAMING

DISCONTINUOUS FIRE RETARDANT WOOD BLOCKING / SHIM

FIRE RETARDANT PLYWOOD

BATT INSULATION

ROOF INSULATION

RIGID INSULATION

MASONRY INSULATION

EIFS (SECTION)

FIREPROOFING

COVER BOARD

ACOUSTICAL TILE (SECTION)

GYPSUM BOARD

METAL / WALL PANELS

SPANDREL GLASS

PLASTIC LAMINATE

GENERAL NOTES

A. THIS BUILDING IS BLAST PROTECTED. REFER TO SPECIFICATION 080001 BLAST PERFORMANCE REQUIREMENTS AND RELATED SECTIONS LISTED THEREIN FOR FURTHER REQUIREMENTS.

B. ALL CONTRACTORS AND THEIR SUPERVISORY PERSONNEL MUST REVIEW THE GENERAL AND SUPPLEMENTARY CONDITIONS TO THE CONTRACT.

C. ALL WORK MUST CONFORM WITH APPLICABLE BUILDING CODES, REGULATIONS AND ORDINANCES, INCLUDING NATIONAL FIRE CODE (UFC) & NFPA 101.

D. CONTRACTOR MUST BECOME FULLY ACQUAINTED WITH CONDITIONS RELATED TO THE WORK.

E. CONTRACTOR MUST BE SOLELY RESPONSIBLE FOR THE MEANS, METHODS AND SEQUENCES OF CONSTRUCTION AND THE SAFETY OF ALL CONSTRUCTION PERSONNEL AND VISITORS.

F. DRAWINGS CONTAINED IN THIS SET MUST NOT BE REPRODUCED FOR SHOP DRAWINGS. COPIES OF THESE DRAWINGS SUBMITTED AS SHOP DRAWINGS WILL BE REJECTED AND RETURNED TO THE CONTRACTOR.

G. EACH INSTALLER MUST EXAMINE SUBSTRATE AND/OR CONDITIONS UNDER WHICH THE WORK WILL BE INSTALLED AND REPORT TO THE CONTRACTOR IN WRITING ANY CONDITIONS DETRIMENTAL TO THE PROPER AND TIMELY EXECUTION OF THAT INSTALLER'S WORK. DO NOT PROCEED UNTIL UNSATISFACTORY CONDITIONS ARE CORRECTED. COMMENCING WITH INSTALLATION WILL CONSTITUTE ACCEPTANCE OF THE SUBSTRATE AND/OR CONDITIONS.

H. DO NOT SCALE DRAWINGS; FOLLOW WRITTEN DIMENSIONS AND NOTES. CONTACT VHA COR FOR CLARIFICATIONS, IF REQUIRED.

I. DIMENSIONS SHOWN ON THE FLOOR PLAN ARE TO THE FACE OF GYPSUM WALL BOARD (FG), FACE OF MASONRY (FOM), FACE OF CONCRETE WALLS (FOG) AND COLUMN GRID LINES, UNLESS OTHERWISE NOTED OR INDICATED.

J. WALL THICKNESSES ARE NOMINAL DIMENSIONS, NOT ACTUAL DIMENSIONS. ALL STUD WALL THICKNESSES ARE 5", UNLESS DIMENSIONED OTHERWISE.

K. ALL MASONRY WALLS ARE 8" THICK (NOMINAL), UNLESS DIMENSIONED OR NOTED OTHERWISE.

L. "TYPICAL", AS USED IN THESE DOCUMENTS, MEANS THAT THE CONDITION OR DIMENSION IS REPRESENTATIVE OF, OR THE SAME, FOR SIMILAR CONDITIONS THROUGHOUT.

M. IF THERE IS A DISCREPANCY BETWEEN SMALL SCALE AND LARGE SCALE DRAWINGS, (PLAN, SECTION, & DETAIL DRAWINGS, AND SO FORTH), LARGER SCALE DRAWINGS SHALL GOVERN OVER SMALLER SCALE DRAWINGS. FOR BIDDING PURPOSES: THE LARGEST SCALE DRAWINGS AND/OR STRICTEST REQUIREMENTS MUST GOVERN. FOR CLARIFICATIONS DURING CONSTRUCTION, LARGER SCALE DRAWINGS AND/OR STRICTEST REQUIREMENTS, MUST GOVERN.

N. IF THERE ARE ANY DISCREPANCIES BETWEEN THE DRAWINGS AND SPECIFICATIONS, CONTACT VHA CO FOR CLARIFICATION. FOR BIDDING PURPOSES: THE MOST EXPENSIVE AND/OR STRICTEST REQUIREMENTS MUST GOVERN. FOR CLARIFICATIONS DURING CONSTRUCTION: THE MOST EXPENSIVE AND/OR STRICTEST REQUIREMENTS, AS INDICATED BY THE VHA CO, MUST GOVERN.

O. ANY DISCREPANCIES BETWEEN THE DRAWINGS AND ACTUAL CONDITIONS MUST BE REPORTED TO THE VHA COR IN WRITING FOR RESOLUTION, PRIOR TO PROCEEDING WITH THE WORK.

P. ANY AND ALL DISCREPANCIES MUST BE REPORTED TO THE VHA COR IN WRITING FOR RESOLUTION. PRIOR TO PROCEEDING WITH THE WORK, IN THESE INSTANCES, NO CHANGE ORDERS OR EXTENSIONS OF TIME WILL BE ALLOWED OR ACCEPTED FOR PROCEEDING WITH THE WORK WITHOUT THE VHA CO'S WRITTEN DIRECTION AND APPROVAL. ALSO, CONTRACTOR MUST REPAIR AND/OR REPLACE ANY UNAUTHORIZED WORK, AS INDICATED BY THE VHA CO, AT NO ADDITIONAL COST TO THE OWNER.

Q. ALL DISSIMILAR METAL MATERIALS MUST BE ISOLATED WITH AN APPROVED NONMETAL ISOLATION MATERIAL.

R. ALL EXTERIOR EXPOSED STEEL MUST BE PAINTED.

S. OPEN EXTERIOR JOINTS AROUND WINDOW AND DOOR FRAMES, BETWEEN WALLS AND FOUNDATIONS, BETWEEN WALL PANELS AND AT PENETRATIONS OF UTILITIES THROUGH THE BUILDING ENVELOPE, AND SO FORTH, MUST BE SEALED, CAULKED, FLASHED OR WEATHER-STRIPPED AS REQUIRED FOR COMPATIBILITY WITH ADJACENT MATERIALS AND TO ELIMINATE AIR LEAKAGE AND WATER ENTRY.

T. PROVIDE SEALANT AND/OR CAULKING BETWEEN DISSIMILAR ADJOINING INTERIOR MATERIALS. (I.E. WINDOW SILLS TO GWB, ACT CEILINGS TO MASONRY WALLS, AND SO FORTH.)

U. DOOR OPENINGS NOT LOCATED BY DIMENSION MUST BE CENTERED IN WALL SHOWN OR LOCATED 2" FROM FINISH WALL TO FINISH JAMB, ALWAYS ALLOWING A MINIMUM OF 18" FROM THE PULL SIDE OF THE DOOR TO THE INTERSECTING WALL.

V. CONTRACTOR MUST VERIFY THE LOCATIONS OF ALL EXISTING UNDERGROUND UTILITIES AND THEIR SERVICE CONNECTIONS WITH THE PROPER UTILITY COMPANY. CONTRACTOR MUST ALSO LOCATE ALL OTHER UTILITIES SHOWN THAT UTILITY COMPANIES WILL NOT LOCATE.

W. CONTRACTOR MUST COORDINATE SIZE, LOCATIONS AND NUMBER OF ALL ROOF OPENINGS AND ROOF ACCESSORIES WITH ALL OTHER TRADES. REFER TO THE ARCHITECTURAL, STRUCTURAL, PLUMBING, MECHANICAL AND ELECTRICAL DRAWINGS.

X. LOCATIONS AND SIZES OF ALL CONCRETE MECHANICAL AND ELECTRICAL PADS MUST BE COORDINATED BY THE MECHANICAL AND ELECTRICAL CONTRACTORS WITH THE SELECTED EQUIPMENT MANUFACTURER AND/OR SUPPLIER. LOCATIONS AND SIZES ARE TO BE APPROVED BY THE VHA COR PRIOR TO PROCEEDING WITH THE WORK.

Y. EXCEPT AT FIRE-RATED PARTITIONS, ALL WALL AND COLUMN GYPSUM BOARD FACING MUST BE HELD AT 5/8" BELOW AND ABOVE STRUCTURE, UNLESS DETAILED OR NOTED OTHERWISE.

Z. AT ALL TELECOMMUNICATION ROOMS: PROVIDE 3/4" X 8'-0" HIGH FIRE-RETARDANT-TREATED WOOD SHEATHING, BOTTOM TO BE LOCATED AT 4" AFF. VERIFY LENGTHS AND LOCATIONS WITH ELECTRICAL DRAWINGS. DO NOT PAINT OVER ONE STRIP OF FIRE-TREATED LABEL, OTHERWISE PAINT GREY ENTIRELY

AA. GLASS DOORS, ADJACENT PANELS AND ALL GLAZED OPENINGS WITHIN 1'-6" OF THE FLOOR, AND WITHIN A 24" ARC OF EITHER VERTICAL EDGE OF A DOOR, AND SO FORTH, MUST BE SAFETY GLAZING AS APPROVED FOR IMPACT BY APPLICABLE BUILDING CODES, AND MUST BE LABELED AS SUCH.

BB. ALL CEILING HEIGHTS AS SHOWN ON PLANS AND DETAILS ARE FROM SLAB OR TILE FLOOR (FINISHED FLOOR) TO FINISHED CEILING.

CC. PROVIDE INDEPENDENT FRAMING AND ATTACHMENTS TO THE STRUCTURE, ADEQUATE TO SUPPORT THE CEILING SYSTEM, LIGHT FIXTURES, DUCTS, DIFFUSERS, SPRINKLER PIPING AND BUS DUCTS.

DD. ALL CLOSETS AND ALCOVES WITHOUT A SPACE IDENTIFICATION NUMBER MUST HAVE THE SAME FINISHES AS ADJOINING SPACES.

EE. CONTRACTOR TO INSTALL METAL AS REQUIRED FOR THE MOUNTING OF ALL TOILET ACCESSORIES, MILLWORK, CASEWORK, AV EQUIPMENT, MEP ITEMS, AND SO FORTH.

FF. ALL PROPRIETARY PRODUCTS DESCRIBED AND/OR DRAWN IN THE DOCUMENTS (BUT NOT SPECIFIED) ARE TO MEET THE MANUFACTURER'S STANDARD CRITERIA WHICH IS NOT LIMITED TO THE FOLLOWING: PERFORMANCE REQUIREMENTS, QUALITY ASSURANCE REQUIREMENTS, APPLICABLE CODES AND INDUSTRY STANDARDS, FABRICATION, ASSEMBLY, HANDLING, DELIVERY, STORAGE, INSTALLATION, OPERATION, ADJUSTMENTS, AND SO FORTH. PROVIDE THE MANUFACTURER'S STANDARD WARRANTY AND STANDARD FINISH WARRANTY. PROVIDE PRODUCT DATA, SHOP DRAWINGS, SAMPLES AND MAINTENANCE DATA, AS REQUIRED. REFER TO DIVISION 01 SPECIFICATION SECTIONS WHICH ALSO APPLY, SUCH AS SUBSTITUTION PROCEDURES, SUBMITTAL PROCEDURES, QUALITY REQUIREMENTS, REFERENCES, EXECUTION AND CLOSEOUT PROCEDURES. ANY SUBSTITUTIONS MUST MEET THE DESIGN INTENT, AS WELL AS THE CRITERIA DESCRIBED ABOVE.

GG. REFER TO SPECIFICATIONS FOR ALL REQUIRED TESTING AND INSPECTIONS.

CONTRACT DOCUMENTS SUBMISSION

FULLY SPRINKLERED

0

100% BID DOCUMENTS

05/26/2023

Number:

Revisions:

Date:

CONSULTANTS:

ARCHITECT/ENGINEERS:

VALHALLA ENGINEERING GROUP, LLC

750 W HAMPODEN AVE
SUITE 300
ENGLEWOOD, CO 80110
(720) 550-6307
WWW.VALHALLAENGINEERING.COM

VEG 21.05

STAMP:

PAUL A. SANDERS

REGISTERED ARCHITECT

NO. 1018000762

U.S. Department of Veterans Affairs

Drawing Title

GENERAL INFORMATION AND ABBREVIATIONS

Approved: Project Director

Phase

100% BID DOCUMENTS

Project Title

CONSTRUCT MENTAL HEALTH OUTPATIENT BLDG 52 ADDITION

Location

2101 ELM STREET, FARGO, ND 58102

Issue Date

05/26/2023

Checked

TW

Drawn

PJS

Project Number

437-316

Building Number

52

Drawing Number

GI002

DWG 2 of 188

A

B

C

D

E

F

5/2/2023 4:01:15 PM

D:\Rev 20210210_05_GENERAL_R01_consideration.rvt

VA FORM 08 - 6231

GENERAL NOTES

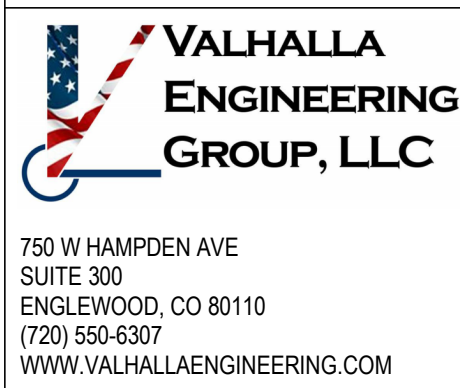
- A. ALL DIMENSIONS ARE MEASURED FROM THE FINISH FLOOR AND THE FINISH WALL, UNLESS NOTED OTHERWISE. ACCESSIBILITY GUIDELINES ARE BASED ON "PG-18-13 VA BARRIER FREE DESIGN STANDARD" AND THE "ARCHITECTURAL BARRIERS ACT ACCESSIBILITY STANDARDS (ABAAS)."
- B. ACCESSIBLE UNOBSTRUCTED REACH RANGES:
1. FORWARD REACH = 15" MIN TO 48" MAX
 2. SIDE REACH = 18" MIN TO 48" MAX
- C. DOOR HARDWARE (TO CENTER OF HARDWARE):
- STANDARD MOUNTING HEIGHTS:
1. PUSH PLATES = 42"
 2. PULL HANDLES = 42"
 3. KNOBS / LEVERS = 40"
 4. PANIC DEVICE = 42" CL OF BAR
5. KICKPLATES:
- a. WIDTH = DOOR WIDTH MINUS 2"
 - b. CENTER HEIGHT = 16" FROM BO DOOR
6. THRESHOLDS:
- a. STANDARD = 1/2" MAX
 - b. EXTERIOR SLIDING DOORS = 3/4" MAX
- D. DRINKING FOUNTAINS & ELECTRICAL WATER COOLERS (TO SPOUT):
1. STANDARD = 38" MIN TO 43" MAX
 2. ACCESSIBLE = 36" MAX (27" MIN CLEAR KNEE SPACE)
- E. COUNTERTOPS (TO SINK RIM / COUNTERTOP):
1. ACCESSIBLE = 28" MIN TO 34" MAX
- F. WATER CLOSETS (TO TOP OF SEAT):
1. STANDARD = 14" TO 15"
 2. ACCESSIBLE (TO TOP OF SEAT) = 11" TO 19"
 3. ACCESSIBLE FLUSH CONTROLS = 44" MAX
- G. URINALS (TO RIM):
1. STANDARD = 24" MAX
 2. ACCESSIBLE = 17" MAX
 3. ACCESSIBLE FLUSH CONTROLS = 44" MAX
- H. LAVATORIES (TO SINK RIM / COUNTERTOP):
1. STANDARD = 36" MAX
 2. ACCESSIBLE = 34" MAX (29" MIN CLEAR KNEE SPACE)
- I. MIRRORS:
1. TO BIO REFLECTIVE SURFACE:
 - a. STANDARD = VARIES
 - b. ACCESSIBLE = 40" MAX 2. TO TO REFLECTIVE SURFACE:
 - a. STANDARD = VARIES
 - b. ACCESSIBLE = 74" MIN
- J. GRAB BARS - ACCESSIBLE (TO TOP OF BAR):
1. WATER CLOSETS = 33" MIN TO 38" MAX
- K. TOILET PARTITIONS:
1. TO BOTTOM = 12"
 2. TO TOP = 70"
- L. URINAL PARTITIONS:
1. TO BOTTOM = 18"
 2. TO TOP = 60"
- M. TOILET PAPER DISPENSER (TO CL OF OUTLET):
1. STANDARD = 24"
 2. ACCESSIBLE = 15" MIN TO 48" MAX
- N. WALL MOUNTED SOAP DISPENSER (TO CL OF PUSH BUTTON):
1. STANDARD = 48"
 2. ACCESSIBLE = VARIES (REFER TO OBSTRUCTED AND UNOBSTRUCTED REACH RANGES)
 3. ACCESSIBLE SIDE REACH = 46" MAX ABOVE SINK IN COUNTER
- O. PAPER TOWEL DISPENSER / WASTE RECEPTACLE (TO TOWEL SLOT):
1. STANDARD = 40" MAX
 2. ACCESSIBLE FORWARD REACH = 48" MAX & 15" MIN
 3. ACCESSIBLE SIDE REACH = 48" MAX & 15" MIN
- P. WARM AIR HAND DRYER (TO PUSH SWITCH):
1. STANDARD = 40" MAX
 2. ACCESSIBLE FORWARD REACH = 48" MAX & 15" MIN
 3. ACCESSIBLE SIDE REACH = 48" MAX & 15" MIN
- Q. SANITARY NAPKIN DISPENSER (TO CL OF OPERABLE PART):
1. STANDARD = 48" MAX
 2. ACCESSIBLE FORWARD REACH = 48" MAX & 15" MIN
 3. ACCESSIBLE SIDE REACH = 48" MAX & 15" MIN
- R. SANITARY NAPKIN DISPOSAL (TO TOP OF UNIT):
1. STANDARD = 28" MAX
 2. ACCESSIBLE = 19" MIN TO 24" MAX (TO OPENING)
- S. TOILET SEAT COVER DISPENSERS (TO OPENING):
1. STANDARD = 40" MAX
 2. ACCESSIBLE FORWARD REACH = 48" MAX & 15" MIN
 3. ACCESSIBLE SIDE REACH = 48" MAX & 15" MIN
- T. SHELVES: ACCESSIBLE = 48" MAX
- U. COAT HOOKS:
1. STANDARD = 68"
 2. ACCESSIBLE = 48" MAX
- V. CHALKBOARDS, TACKBOARDS & MARKERBOARDS:
1. STANDARD = 12" TO 30" (TO BO BOARD OR CHALK TRAY)
 2. STANDARD = 80" (RECOMMENDED, TO TOP OF BOARD)
- W. THERMOSTATS & CONTROL DEVICES (TO TOP):
1. ACCESSIBLE FORWARD REACH = 48" MAX
 2. ACCESSIBLE SIDE REACH = 48" MAX
- X. LIGHT SWITCHES & CARD READERS (TO CL):
1. LOCATE 6" FROM DOOR JAMB
 2. ACCESSIBLE = 48" MAX
- Y. CONVENIENCE RECEPTACLES / ELECTRICAL / TELEPHONE / DATA (TO CL):
1. STANDARD = 48"
 2. ACCESSIBLE = 15" MIN
- Z. EXIT LIGHTS - WALL MOUNTED:
1. 2" BELOW CEILING
 2. 2" MIN ABOVE DOOR FRAME EQUAL SPACE FROM CEILING TO TOP OF FRAME
- AA. FIRE EXTINGUISHERS (TO TOP UNLESS NOTED OTHERWISE):
1. STANDARD = 48" MAX
 2. ACCESSIBLE FORWARD REACH = 48" MAX
 3. ACCESSIBLE SIDE REACH = 48" MAX
- BB. FIRE ALARM PULL STATION (TO LEVER):
1. STANDARD = 48" MAX
 2. ACCESSIBLE FORWARD REACH = 48" MAX
 3. ACCESSIBLE SIDE REACH = 48" MAX
- CC. SMOKE AND / OR HEAT DETECTORS:
1. STANDARD = CEILING HEIGHT
- DD. HORN / SPEAKER / VISUAL SIGNALS:
1. STANDARD = 80" AFF OR 6" BELOW CEILING - WHICHEVER IS LOWER
- EE. ROOM SIGNAGE:
1. STANDARD = 60" HIGH AFF (TO TOP OF SIGN) & 2" FROM DOOR FRAME TO NEAREST EDGE OF SIGN, AT LATCH SIDE OF DOOR

CONTRACT DOCUMENTS SUBMISSION
FULLY SPRINKLERED

0	100% BID DOCUMENTS	05/26/2023
Number:	Revisions:	Date:

CONSULTANTS:

ARCHITECT/ENGINEERS:



VEG 21.05

STAMP:



Drawing Title
ACCESSIBILITY STANDARDS

Approved: Project Director

Phase
100% BID DOCUMENTS

Project Title
CONSTRUCT MENTAL HEALTH
OUTPATIENT BLDG 52 ADDITION

Location
2101 ELM STREET, FARGO, ND 58102

Issue Date
05/26/2023

Checked
TW

Drawn
PJS

Project Number
437-316

Building Number
52

Drawing Number

GI003
DWG 3 of 188

CONTRACT DOCUMENTS SUBMISSION
FULLY SPRINKLERED

C. PROJECT MUST BE PHASED IN SUCH A WAY TO ELIMINATE DISRUPTION TO MAIN CAMPUS UTILITIES APART FROM SWITCHOVER TO FINAL UTILITIES OR ANY TEMPORARY UTILITIES REQUIRED TO MAINTAIN CONSISTENT OPERATION OF EXISTING BUILDING 52 AND CONNECTIONS OF MAIN CAMPUS BUILDING TO PUBLIC UTILITIES LOCATED NEAR WEST SIDE OF EXISTING BUILDING 52. REFERENCE CIVIL PLANS. COORDINATE WITH VA COR A MINIMUM OF 3 WEEKS PRIOR TO ANY SWITCHOVER. CONTRACTOR WILL BE REQUIRED TO PROVIDE A DETAILED PHASING PLAN.

D. CONTRACTOR IS REQUIRED TO MAINTAIN ONE DRIVING LANE OPEN AT ALL TIMES THROUGHOUT THE PROJECT. UTILITY WORK, TEMPORARY FENCING, AND PAVEMENT WORK MUST BE PHASED TO ENSURE CONTINUOUS ACCESS TO THE MAIN HOSPITAL ENTRY ALONG THE ADJACENT ROAD SOUTH AND EAST OF THE BUILDING.

COORDINATE UTILITY DEMO, ANY TEMPORARY UTILITIES, AND THEIR FINAL
INSTALLED LOCATIONS WITH ED101 DEMOLITION ELECTRICAL SITE PLAN,
ED102 DEMOLITION TELECOM SITE PLAN, CD101 CIVIL EXISTING CONDITIONS
DEMOLITION PLAN, CD102 CIVIL EXISTING CONDITIONS DEMOLITION UTILITY
PLAN, AND THEIR ASSOCIATED FINAL SITE PLANS SO THAT EXISTING BUILDING
52 MAY REMAIN IN USE DURING PERIOD OF CONSTRUCTION.

RELOCATE ANY TEMPORARY ELECTRIC, GAS, AND OTHER UTILITIES AS INDICATED ON CU101 CIVIL UTILITY PLAN AND OTHER ASSOCIATED SITE PLAN: (LIGHTING, TELECOM, POWER, MECHANICAL) TO THEIR FINAL LOCATION.

COMPLETE PAVING WITHIN MAIN DRIVE AISLE SOUTH AND EAST OF NEW ADDITION WHILE MAINTAINING ACCESS TO MAIN HOSPITAL ENTRANCE FROM THIS DRIVE AISLE.

PHASE 2:
BEGIN SITE PREP FOR NEW BLDG 52 ADDITION AND EXTEND UTILITIES INTO BUILDING AS INDICATED ON CIVIL UTILITY PLAN. DISRUPTIONS TO PARKING AREA NORTH OF PROJECT TO BE MINIMIZED. MAINTAIN EXISTING MEANS OF EGRESS FOR BUILDING 52 ESTABLISHED IN PHASE 1.

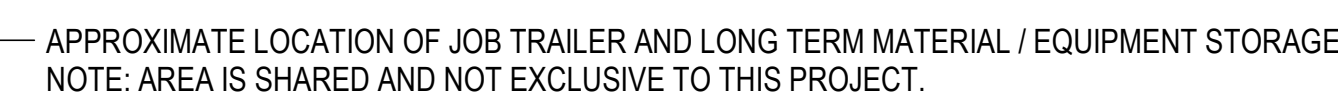
PHASE 3:
CONSTRUCT REMAINDER OF BUILDING 52 ADDITION AND COMPLETE PAVEMENT AND REMAINDER OF SITE WORK NORTH OF BUILDING. DEMOLISH TEMPORARY EGRESS AND RESTORE TO ORIGINAL CONDITION, COORDINATE WITH ARCHITECTURAL DEMOLITION PLANS.

APPROXIMATE OVERALL EXTENTS OF AREA OF WORK, REF:
CIVIL DEMOLITION PLAN FOR OVERALL EXTENTS OF
PAVEMENT DEMO AND CIVIL PLANS FOR APPROXIMATE
EXTENTS OF WORK AREA INCLUDING TEMPORARY FENCING.

COORDINATE TEMPORARY FENCING LOCATIONS WITH VHA
COR FOR EACH PHASE TO MINIMIZE TIME ANY PARKING
AREAS ARE TO REMAIN CLOSED.

NUMBERS INDICATE APPROXIMATE AREA OF EACH PHASE OF WORK. SEE PHASING GENERAL NOTES THIS SHEET.

CONTRACTOR STAGING AREA
CONTRACTOR PARKING AREA
GC TO COORDINATE ACCESS WITH COR
NOTE: AREA IS SHARED AND IS NOT
EXCLUSIVE TO THIS PROJECT.



VEG 21.05

VA FORM 08-6231	1	2
-----------------	---	---

(720) 550-6307
WWW.VALHALLAENGINEERING.COM



VEG 21.05



Approved: Project Director

1	2	3	4	5	6	7	8	9	10	11	12	13	14	15	16	17	18	19	20	21	22	23	24	25	26	27	28	29	30	31	32	33	34	35	36	37	38	39	40	41	42	43	44	45	46	47	48	49	50	51	52	53	54	55	56	57	58	59	60	61	62	63	64	65	66	67	68	69	70	71	72	73	74	75	76	77	78	79	80	81	82	83	84	85	86	87	88	89	90	91	92	93	94	95	96	97	98	99	100	101	102	103	104	105	106	107	108	109	110	111	112	113	114	115	116	117	118	119	120	121	122	123	124	125	126	127	128	129	130	131	132	133	134	135	136	137	138	139	140	141	142	143	144	145	146	147	148	149	150	151	152	153	154	155	156	157	158	159	160	161	162	163	164	165	166	167	168	169	170	171	172	173	174	175	176	177	178	179	180	181	182	183	184	185	186	187	188	189	190	191	192	193	194	195	196	197	198	199	200	201	202	203	204	205	206	207	208	209	210	211	212	213	214	215	216	217	218	219	220	221	222	223	224	225	226	227	228	229	230	231	232	233	234	235	236	237	238	239	240	241	242	243	244	245	246	247	248	249	250	251	252	253	254	255	256	257	258	259	260	261	262	263	264	265	266	267	268	269	270	271	272	273	274	275	276	277	278	279	280	281	282	283	284	285	286	287	288	289	290	291	292	293	294	295	296	297	298	299	300	301	302	303	304	305	306	307	308	309	310	311	312	313	314	315	316	317	318	319	320	321	322	323	324	325	326	327	328	329	330	331	332	333	334	335	336	337	338	339	340	341	342	343	344	345	346	347	348	349	350	351	352	353	354	355	356	357	358	359	360	361	362	363	364	365	366	367	368	369	370	371	372	373	374	375	376	377	378	379	380	381	382	383	384	385	386	387	388	389	390	391	392	393	394	395	396	397	398	399	400	401	402	403	404	405	406	407	408	409	410	411	412	413	414	415	416	417	418	419	420	421	422	423	424	425	426	427	428	429	430	431	432	433	434	435	436	437	438	439	440	441	442	443	444	445	446	447	448	449	450	451	452	453	454	455	456	457	458	459	460	461	462	463	464	465	466
---	---	---	---	---	---	---	---	---	----	----	----	----	----	----	----	----	----	----	----	----	----	----	----	----	----	----	----	----	----	----	----	----	----	----	----	----	----	----	----	----	----	----	----	----	----	----	----	----	----	----	----	----	----	----	----	----	----	----	----	----	----	----	----	----	----	----	----	----	----	----	----	----	----	----	----	----	----	----	----	----	----	----	----	----	----	----	----	----	----	----	----	----	----	----	----	----	----	----	-----	-----	-----	-----	-----	-----	-----	-----	-----	-----	-----	-----	-----	-----	-----	-----	-----	-----	-----	-----	-----	-----	-----	-----	-----	-----	-----	-----	-----	-----	-----	-----	-----	-----	-----	-----	-----	-----	-----	-----	-----	-----	-----	-----	-----	-----	-----	-----	-----	-----	-----	-----	-----	-----	-----	-----	-----	-----	-----	-----	-----	-----	-----	-----	-----	-----	-----	-----	-----	-----	-----	-----	-----	-----	-----	-----	-----	-----	-----	-----	-----	-----	-----	-----	-----	-----	-----	-----	-----	-----	-----	-----	-----	-----	-----	-----	-----	-----	-----	-----	-----	-----	-----	-----	-----	-----	-----	-----	-----	-----	-----	-----	-----	-----	-----	-----	-----	-----	-----	-----	-----	-----	-----	-----	-----	-----	-----	-----	-----	-----	-----	-----	-----	-----	-----	-----	-----	-----	-----	-----	-----	-----	-----	-----	-----	-----	-----	-----	-----	-----	-----	-----	-----	-----	-----	-----	-----	-----	-----	-----	-----	-----	-----	-----	-----	-----	-----	-----	-----	-----	-----	-----	-----	-----	-----	-----	-----	-----	-----	-----	-----	-----	-----	-----	-----	-----	-----	-----	-----	-----	-----	-----	-----	-----	-----	-----	-----	-----	-----	-----	-----	-----	-----	-----	-----	-----	-----	-----	-----	-----	-----	-----	-----	-----	-----	-----	-----	-----	-----	-----	-----	-----	-----	-----	-----	-----	-----	-----	-----	-----	-----	-----	-----	-----	-----	-----	-----	-----	-----	-----	-----	-----	-----	-----	-----	-----	-----	-----	-----	-----	-----	-----	-----	-----	-----	-----	-----	-----	-----	-----	-----	-----	-----	-----	-----	-----	-----	-----	-----	-----	-----	-----	-----	-----	-----	-----	-----	-----	-----	-----	-----	-----	-----	-----	-----	-----	-----	-----	-----	-----	-----	-----	-----	-----	-----	-----	-----	-----	-----	-----	-----	-----	-----	-----	-----	-----	-----	-----	-----	-----	-----	-----	-----	-----	-----	-----	-----	-----	-----	-----	-----	-----	-----	-----	-----	-----	-----	-----	-----	-----	-----	-----	-----	-----	-----	-----	-----	-----	-----	-----	-----	-----	-----	-----	-----	-----	-----	-----	-----	-----	-----	-----	-----	-----	-----	-----	-----	-----	-----	-----	-----	-----	-----	-----	-----	-----	-----

1	2	3	4	5	6	7	8	9	10	11	12	13	14	15	16	17	18	19	20	21	22	23	24	25	26	27	28	29	30	31	32	33	34	35	36	37	38	39	40	41	42	43	44	45	46	47	48	49	50	51	52	53	54	55	56	57	58	59	60	61	62	63	64	65	66	67	68	69	70	71	72	73	74	75	76	77	78	79	80	81	82	83	84	85	86	87	88	89	90	91	92	93	94	95	96	97	98	99	100	101	102	103	104	105	106	107	108	109	110	111	112	113	114	115	116	117	118	119	120	121	122	123	124	125	126	127	128	129	130	131	132	133	134	135	136	137	138	139	140	141	142	143	144	145	146	147	148	149	150	151	152	153	154	155	156	157	158	159	160	161	162	163	164	165	166	167	168	169	170	171	172	173	174	175	176	177	178	179	180	181	182	183	184	185	186	187	188	189	190	191	192	193	194	195	196	197	198	199	200	201	202	203	204	205	206	207	208	209	210	211	212	213	214	215	216	217	218	219	220	221	222	223	224	225	226	227	228	229	230	231	232	233	234	235	236	237	238	239	240	241	242	243	244	245	246	247	248	249	250	251	252	253	254	255	256	257	258	259	260	261	262	263	264	265	266	267	268	269	270	271	272	273	274	275	276	277	278	279	280	281	282	283	284	285	286	287	288	289	290	291	292	293	294	295	296	297	298	299	300	301	302	303	304	305	306	307	308	309	310	311	312	313	314	315	316	317	318	319	320	321	322	323	324	325	326	327	328	329	330	331	332	333	334	335	336	337	338	339	340	341	342	343	344	345	346	347	348	349	350	351	352	353	354	355	356	357	358	359	360	361	362	363	364	365	366	367	368	369	370	371	372	373	374	375	376	377	378	379	380	381	382	383	384	385	386	387	388	389	390	391	392	393	394	395	396	397	398	399	400	401	402	403	404	405	406	407	408	409	410	411	412	413	414	415	416	417	418	419	420	421	422	423	424	425	426	427	428	429	430	431	432	433	434	435	436	437	438	439	440	441	442	443	444	445	446	447	448	449	450	451	452	453	454	455	456	457	458	459	460	461	462	463	464	465	466
---	---	---	---	---	---	---	---	---	----	----	----	----	----	----	----	----	----	----	----	----	----	----	----	----	----	----	----	----	----	----	----	----	----	----	----	----	----	----	----	----	----	----	----	----	----	----	----	----	----	----	----	----	----	----	----	----	----	----	----	----	----	----	----	----	----	----	----	----	----	----	----	----	----	----	----	----	----	----	----	----	----	----	----	----	----	----	----	----	----	----	----	----	----	----	----	----	----	----	-----	-----	-----	-----	-----	-----	-----	-----	-----	-----	-----	-----	-----	-----	-----	-----	-----	-----	-----	-----	-----	-----	-----	-----	-----	-----	-----	-----	-----	-----	-----	-----	-----	-----	-----	-----	-----	-----	-----	-----	-----	-----	-----	-----	-----	-----	-----	-----	-----	-----	-----	-----	-----	-----	-----	-----	-----	-----	-----	-----	-----	-----	-----	-----	-----	-----	-----	-----	-----	-----	-----	-----	-----	-----	-----	-----	-----	-----	-----	-----	-----	-----	-----	-----	-----	-----	-----	-----	-----	-----	-----	-----	-----	-----	-----	-----	-----	-----	-----	-----	-----	-----	-----	-----	-----	-----	-----	-----	-----	-----	-----	-----	-----	-----	-----	-----	-----	-----	-----	-----	-----	-----	-----	-----	-----	-----	-----	-----	-----	-----	-----	-----	-----	-----	-----	-----	-----	-----	-----	-----	-----	-----	-----	-----	-----	-----	-----	-----	-----	-----	-----	-----	-----	-----	-----	-----	-----	-----	-----	-----	-----	-----	-----	-----	-----	-----	-----	-----	-----	-----	-----	-----	-----	-----	-----	-----	-----	-----	-----	-----	-----	-----	-----	-----	-----	-----	-----	-----	-----	-----	-----	-----	-----	-----	-----	-----	-----	-----	-----	-----	-----	-----	-----	-----	-----	-----	-----	-----	-----	-----	-----	-----	-----	-----	-----	-----	-----	-----	-----	-----	-----	-----	-----	-----	-----	-----	-----	-----	-----	-----	-----	-----	-----	-----	-----	-----	-----	-----	-----	-----	-----	-----	-----	-----	-----	-----	-----	-----	-----	-----	-----	-----	-----	-----	-----	-----	-----	-----	-----	-----	-----	-----	-----	-----	-----	-----	-----	-----	-----	-----	-----	-----	-----	-----	-----	-----	-----	-----	-----	-----	-----	-----	-----	-----	-----	-----	-----	-----	-----	-----	-----	-----	-----	-----	-----	-----	-----	-----	-----	-----	-----	-----	-----	-----	-----	-----	-----	-----	-----	-----	-----	-----	-----	-----	-----	-----	-----	-----	-----	-----	-----	-----	-----	-----	-----	-----	-----	-----	-----	-----	-----	-----	-----	-----	-----	-----	-----	-----	-----	-----	-----	-----	-----	-----	-----	-----	-----	-----	-----	-----	-----	-----	-----	-----	-----	-----	-----	-----	-----	-----	-----	-----	-----	-----	-----	-----	-----



Location	2101 ELM STREET, FARGO, ND 58102
-----------------	----------------------------------


Drawn	
-------	--

Drawing Number	
----------------	--

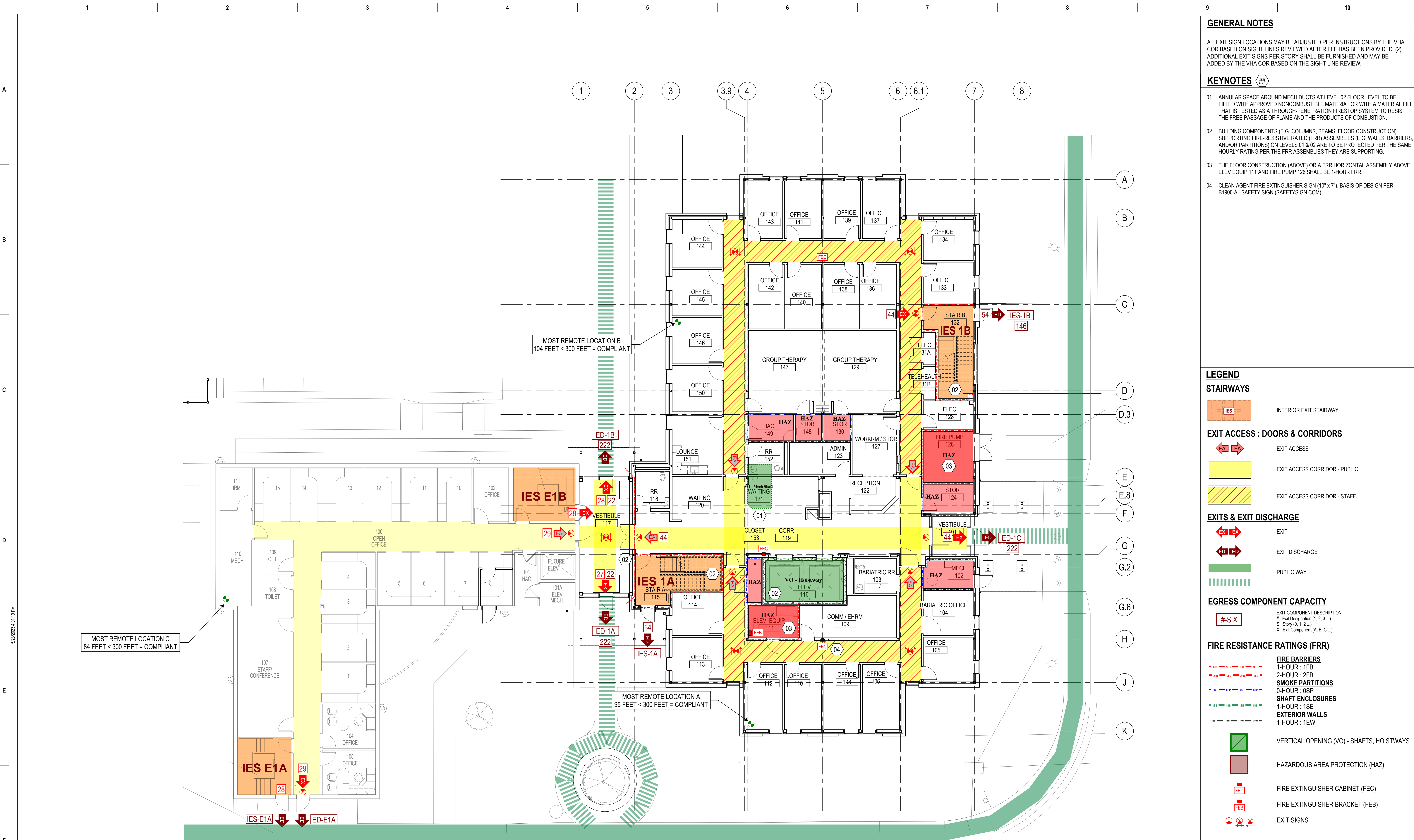
GI004
DWG 4 of 188

[illegible][illegible]

<p>ARCHITECT/ENGINEERS:</p>	<p>STAMP</p>
 <p>VALHALLA ENGINEERING GROUP, LLC</p>	
<p>750 W HAMPSIRE AVE SUITE 300 ENGLEWOOD, CO 80110 720.550.4307 WWW.VALHALLAENGINEERING.COM</p>	<p>VEG 21.05</p>

 <p>U.S. Department of Veterans Affairs</p>	<p>Drawing Title</p> <p>LIFE SAFETY - GENERAL</p>
	<p>Approved: Project Director</p>

	Phase	Project Title			Project Number	
	100% BID DOCUMENTS	CONSTRUCT MENTAL HEALTH OUTPATIENT BLDG 52 ADDITION			437-316	
		Location			Drawing Number	
		2101 ELM STREET, FARGO, ND 58102			GI010	
		Issue Date	Checked	Drawn	DWG 5 of 188	
		05/26/2023	TW	PJS		



GENERAL NOTES

A. EXIT SIGN LOCATIONS MAY BE ADJUSTED PER INSTRUCTIONS BY THE VHA COR BASED ON SIGHT LINES REVIEWED AFTER FFE HAS BEEN PROVIDED. (2) ADDITIONAL EXIT SIGNS PER STORY SHALL BE FURNISHED AND MAY BE ADDED BY THE VHA COR BASED ON THE SIGHT LINE REVIEW.

KEYNOTES

- 01 ANNULAR SPACE AROUND MECH DUCTS AT LEVEL 02 FLOOR LEVEL TO BE FILLED WITH APPROVED NONCOMBUSTIBLE MATERIAL OR WITH A MATERIAL FILL THAT IS TESTED AS A THROUGH-PENETRATION FIRESTOP SYSTEM TO RESIST THE FREE PASSAGE OF FLAME AND THE PRODUCTS OF COMBUSTION.
- 02 BUILDING COMPONENTS (E.G. COLUMNS, BEAMS, FLOOR CONSTRUCTION) SUPPORTING FIRE-RESISTIVE RATED (FRR) ASSEMBLIES (E.G. WALLS, BARRIERS, AND/OR PARTITIONS) ON LEVELS 01 & 02 ARE TO BE PROTECTED PER THE SAME HOURLY RATING PER THE FRR ASSEMBLIES THEY ARE SUPPORTING.
- 03 THE FLOOR CONSTRUCTION (ABOVE) OR A FRR HORIZONTAL ASSEMBLY ABOVE ELEV EQUIP 111 AND FIRE PUMP 126 SHALL BE 1-HOUR FRR.
- 04 CLEAN AGENT FIRE EXTINGUISHER SIGN (10" x 7"). BASIS OF DESIGN PER B1900-AL SAFETY SIGN (SAFETYSIGN.COM).

LEGEND

STAIRWAYS

IES INTERIOR EXIT STAIRWAY

EXIT ACCESS : DOORS & CORRIDORS

EA EXIT ACCESS
EXIT ACCESS CORRIDOR - PUBLIC
EXIT ACCESS CORRIDOR - STAFF

EXITS & EXIT DISCHARGE

EX EXIT
ED EXIT DISCHARGE
PUBLIC WAY

EGRESS COMPONENT CAPACITY

#S.X
EXIT COMPONENT DESCRIPTION
- Exit Designation (1, 2, 3...)
S - Story (0, 1, 2...)
X - Exit Component (A, B, C...)

FIRE RESISTANCE RATINGS (FRR)

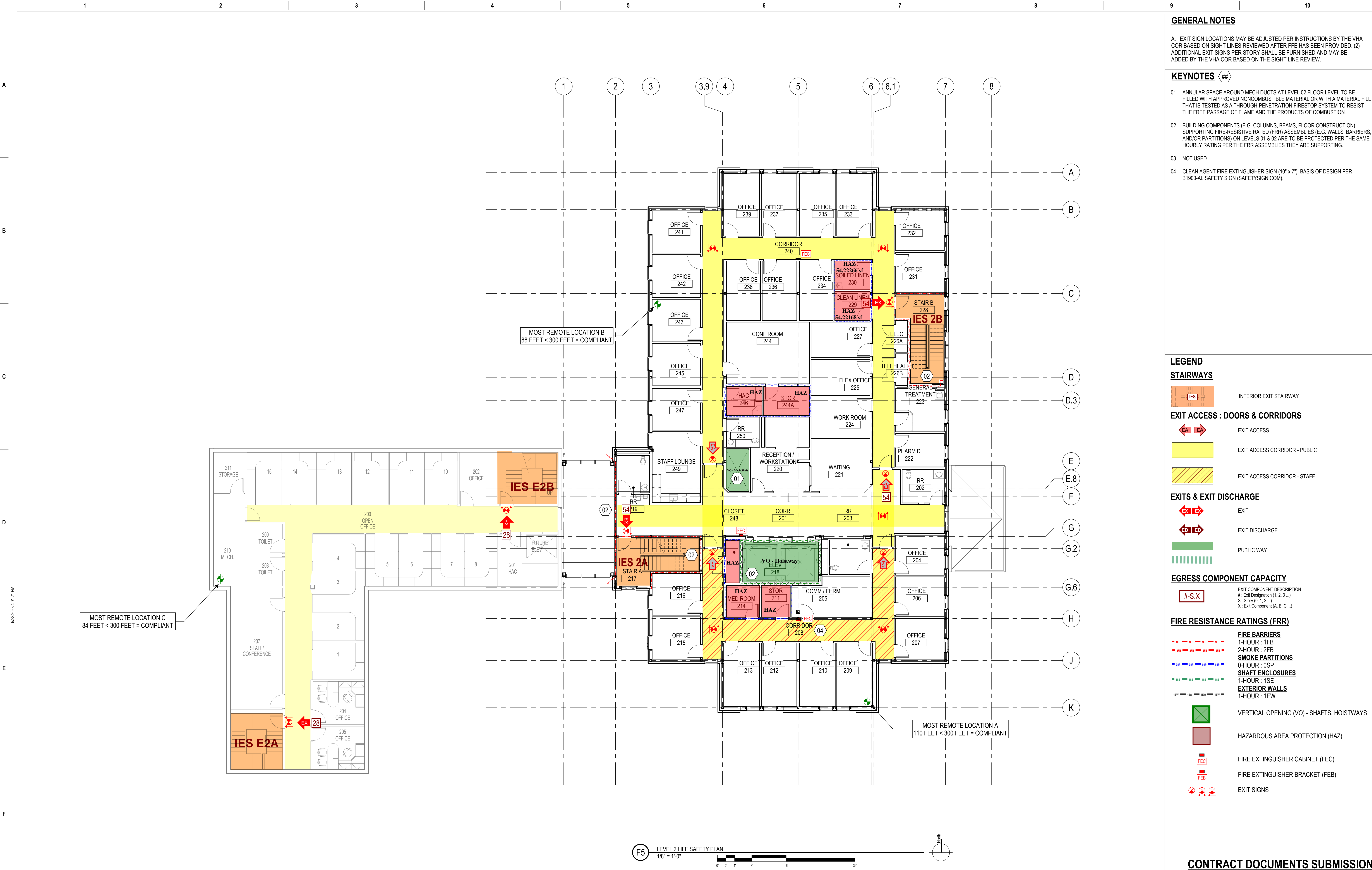
FIRE BARRIERS
1-HOUR : 1FB
2-HOUR : 2FB
SMOKE PARTITIONS
0-HOUR : 0SP
SHAFT ENCLOSURES
1-HOUR : 1SE
EXTERIOR WALLS
1-HOUR : 1EW

VERTICAL OPENING (VO) - SHAFTS, HOISTWAYS
HAZARDOUS AREA PROTECTION (HAZ)
FIRE EXTINGUISHER CABINET (FEC)
FIRE EXTINGUISHER BRACKET (FEB)
EXIT SIGNS

CONTRACT DOCUMENTS SUBMISSION FULLY SPRINKLERED

0	100% BID DOCUMENTS	05/26/2023	CONSULTANTS:	ARCHITECT/ENGINEERS:	STAMP:	Drawing Title	Phase	Project Title	Project Number
				VALHALLA ENGINEERING GROUP, LLC	PAULA SANDERS ARCHITECT	LIFE SAFETY PLAN - LEVEL 1	100% BID DOCUMENTS	CONSTRUCT MENTAL HEALTH OUTPATIENT BLDG 52 ADDITION	437-316
				750 W HAMPODEN AVE SUITE 300 ENGLEWOOD, CO 80110 (720) 590-6307 WWW.VALHALLAENGINEERING.COM	U.S. Department of Veterans Affairs	Approved: Project Director		Location 2101 ELM STREET, FARGO, ND 58102	Building Number 52
Number:	Revisions:	Date:		VEG 21.05				Issue Date 05/26/2023	Drawing Number G101
								Checked TW	DWG 6 of 188
								Drawn PJS	

D:\Rev\2023\105_GENERAL_R21_conf\plan\level1



GENERAL NOTES

A. EXIT SIGN LOCATIONS MAY BE ADJUSTED PER INSTRUCTIONS BY THE VHA COR BASED ON SIGHT LINES REVIEWED AFTER FFE HAS BEEN PROVIDED. (2) ADDITIONAL EXIT SIGNS PER STORY SHALL BE FURNISHED AND MAY BE ADDED BY THE VHA COR BASED ON THE SIGHT LINE REVIEW.

KEYNOTES ##

- 01 ANNULAR SPACE AROUND MECH DUCTS AT LEVEL 02 FLOOR LEVEL TO BE FILLED WITH APPROVED NONCOMBUSTIBLE MATERIAL OR WITH A MATERIAL FILL THAT IS TESTED AS A THROUGH-PENETRATION FIRESTOP SYSTEM TO RESIST THE FREE PASSAGE OF FLAME AND THE PRODUCTS OF COMBUSTION.
- 02 BUILDING COMPONENTS (E.G. COLUMNS, BEAMS, FLOOR CONSTRUCTION) SUPPORTING FIRE-RESISTIVE RATED (FRR) ASSEMBLIES (E.G. WALLS, BARRIERS, AND/OR PARTITIONS) ON LEVELS 01 & 02 ARE TO BE PROTECTED PER THE SAME HOURLY RATING PER THE FRR ASSEMBLIES THEY ARE SUPPORTING.
- 03 NOT USED
- 04 CLEAN AGENT FIRE EXTINGUISHER SIGN (10" x 7"). BASIS OF DESIGN PER 81900-AL SAFETY SIGN (SAFETYSIGN.COM).

LEGEND

STAIRWAYS

IES INTERIOR EXIT STAIRWAY

EXIT ACCESS : DOORS & CORRIDORS

EA ED EXIT ACCESS

EXIT ACCESS CORRIDOR - PUBLIC

EXIT ACCESS CORRIDOR - STAFF

EXITS & EXIT DISCHARGE

EX ED EXIT

EXIT DISCHARGE

PUBLIC WAY

EGRESS COMPONENT CAPACITY

#-S-X EXIT COMPONENT DESCRIPTION

: Exit Designation (1, 2, 3, ...)

S : Story (0, 1, 2, ...)

X : Exit Component (A, B, C, ...)

FIRE RESISTANCE RATINGS (FRR)

FIRE BARRIERS

1-HOUR : 1FB

2-HOUR : 2FB

SMOKE PARTITIONS

0-HOUR : OSP

SHAFT ENCLOSURES

1-HOUR : 1SE

EXTERIOR WALLS

1-HOUR : 1EW

VERTICAL OPENING (VO) - SHAFTS, HOISTWAYS

HAZARDOUS AREA PROTECTION (HAZ)

FIRE EXTINGUISHER CABINET (FEC)

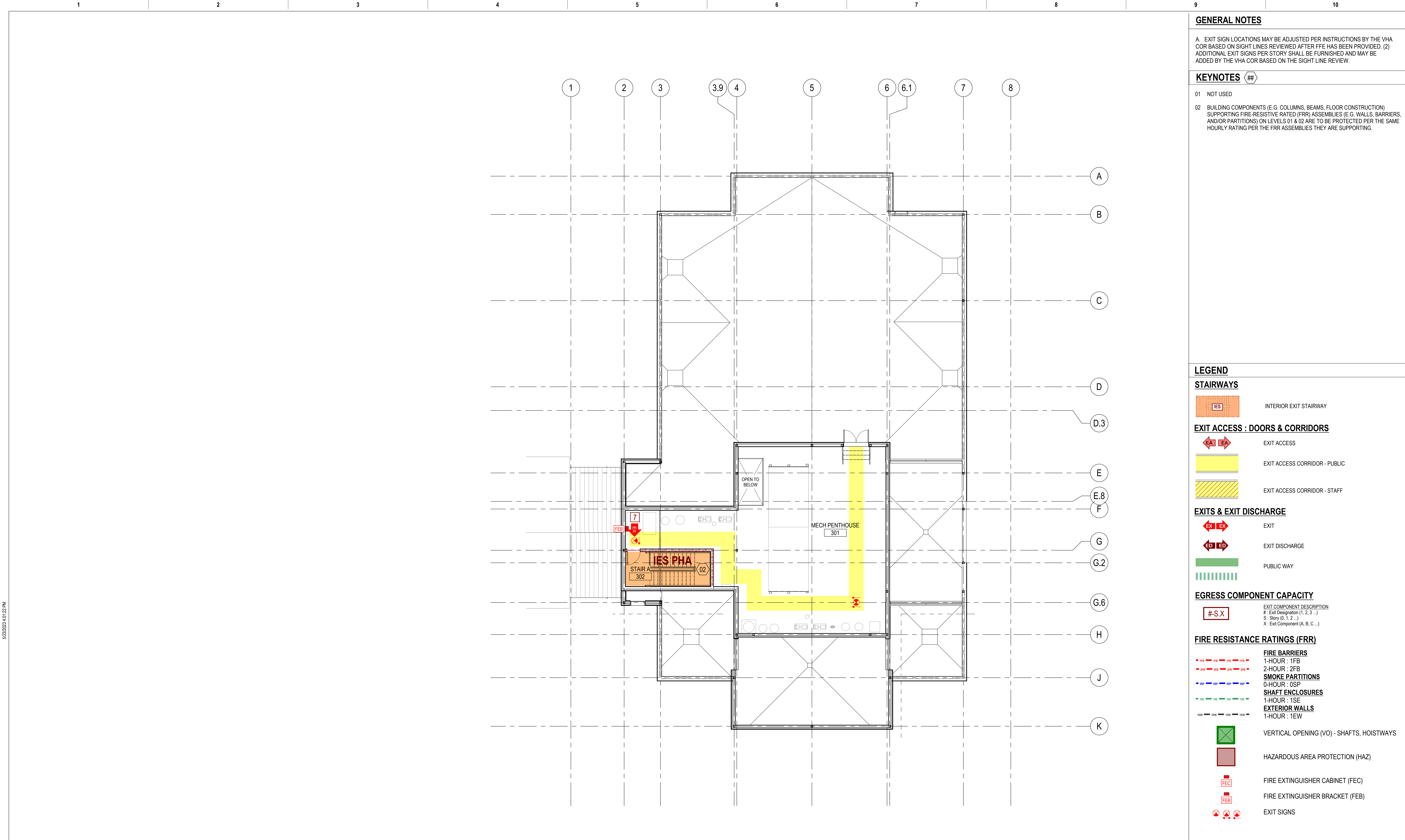
FIRE EXTINGUISHER BRACKET (FEB)

EXIT SIGNS

CONTRACT DOCUMENTS SUBMISSION

FULLY SPRINKLERED

0	100% BID DOCUMENTS	05/26/2023	CONSULTANTS:	ARCHITECT/ENGINEERS:	STAMP:	Drawing Title	Phase	Project Title	Project Number
				VALHALLA ENGINEERING GROUP, LLC	PAULA SANDERS ARCHITECT	LIFE SAFETY PLAN - LEVEL 2	100% BID DOCUMENTS	CONSTRUCT MENTAL HEALTH OUTPATIENT BLDG 52 ADDITION	437-316
				750 W HAMPODEN AVE SUITE 300 ENGLEWOOD, CO 80110 (720) 560-6307 WWW.VALHALLAENGINEERING.COM	U.S. Department of Veterans Affairs	Approved: Project Director		Location	Building Number
								2101 ELM STREET, FARGO, ND 58102	52
Number:	Revisions:	Date:						Issue Date	Drawing Number
								05/26/2023	G102
								Checked	DWG 7 of 188
								TW	
								PJS	



GENERAL NOTES

A. EXIT SIGN LOCATIONS MAY BE ADJUSTED PER INSTRUCTIONS BY THE VHA COR BASED ON SIGHT LINES REVIEWED AFTER FFE HAS BEEN PROVIDED. (2) ADDITIONAL EXIT SIGNS PER STORY SHALL BE FURNISHED AND MAY BE ADDED BY THE VHA COR BASED ON THE SIGHT LINE REVIEW.

KEYNOTES ##

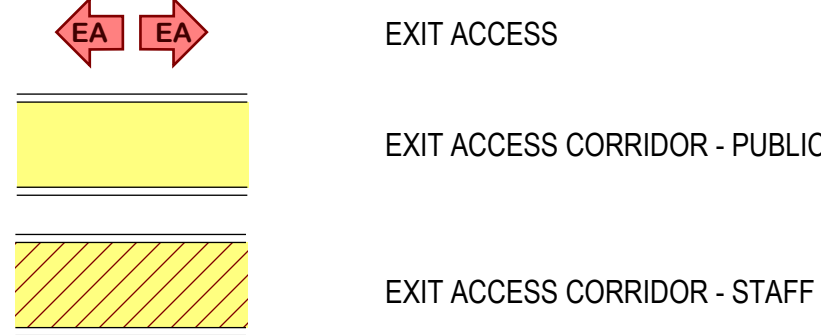
- 01 NOT USED
- 02 BUILDING COMPONENTS (E.G. COLUMNS, BEAMS, FLOOR CONSTRUCTION) SUPPORTING FIRE-RESISTIVE RATED (FRR) ASSEMBLIES (E.G. WALLS, BARRIERS, AND/OR PARTITIONS) ON LEVELS 01 & 02 ARE TO BE PROTECTED PER THE SAME HOURLY RATING PER THE FRR ASSEMBLIES THEY ARE SUPPORTING.

LEGEND

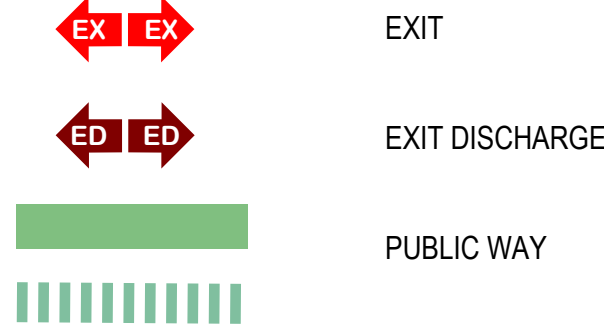
STAIRWAYS



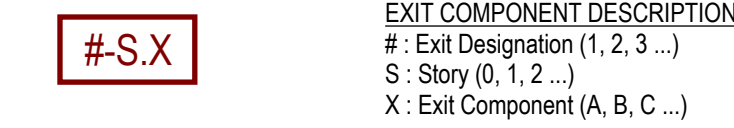
EXIT ACCESS : DOORS & CORRIDORS



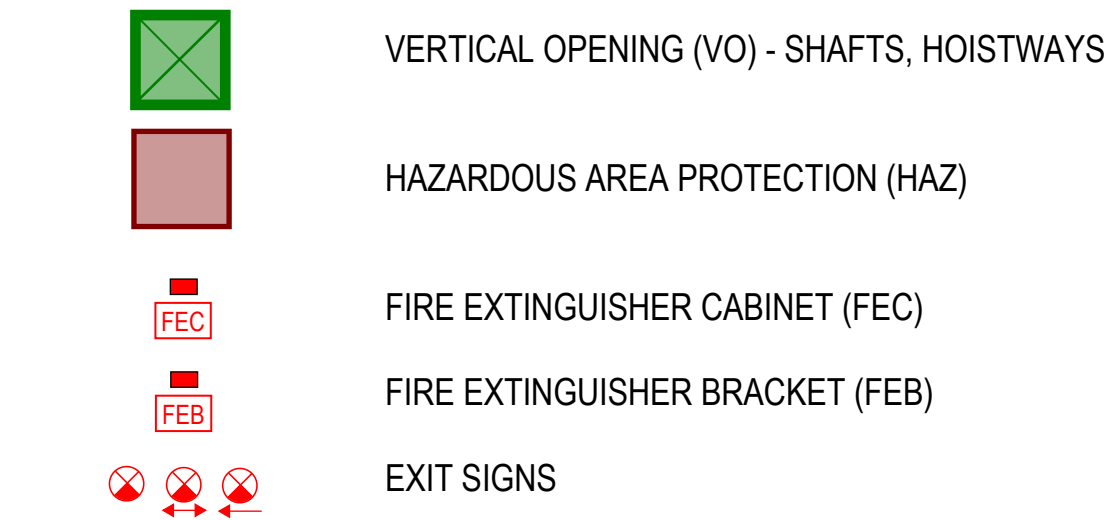
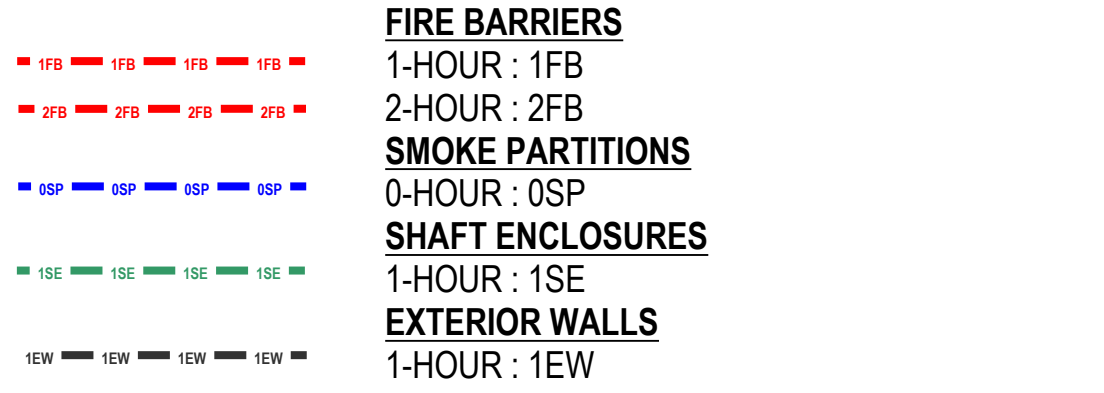
EXITS & EXIT DISCHARGE



EGRESS COMPONENT CAPACITY



FIRE RESISTANCE RATINGS (FRR)



CONTRACT DOCUMENTS SUBMISSION
FULLY SPRINKLERED

0	100% BID DOCUMENTS	05/26/2023	CONSULTANTS:	ARCHITECT/ENGINEERS:	STAMP:	Drawing Title	Phase	Project Title	Project Number
				VALHALLA ENGINEERING GROUP, LLC	PAULA A. SANDERS ARCHITECT	LIFE SAFETY PLAN - PENTHOUSE	100% BID DOCUMENTS	CONSTRUCT MENTAL HEALTH OUTPATIENT BLDG 52 ADDITION	437-316
				750 W HAMPTON AVE SUITE 300 ENGLEWOOD, CO 80110 (720) 590-6307 WWW.VALHALLAENGINEERING.COM	U.S. Department of Veterans Affairs	Approved: Project Director		Location	Building Number
								2101 ELM STREET, FARGO, ND 58102	52
								Issue Date	Drawing Number
								05/26/2023	G103
								Checked	DWG 8 of 188
								TW	
								PJS	