

A

B

C

D

E

F

A

B

C

D

E

F

GENERAL NOTES

- A. UNLESS NOTED OTHERWISE, ALL WORK SHALL CONFORM WITH THE REQUIREMENTS OF THE PROJECT SPECIFICATIONS. SPECIFICATIONS SHALL TAKE PRECEDENCE OVER GENERAL NOTES & TYPICAL DETAILS.
- B. PRIOR TO STARTING THE WORK, THE CONTRACTOR SHALL COMPARE THE INITIAL CONDITIONS SHOWN ON THE DRAWINGS WITH THE EXISTING SITE CONDITIONS. ANY DISCREPANCIES BETWEEN THE DRAWINGS AND SITE CONDITIONS SHALL BE REPORTED TO THE VHA COR AND RESOLVED BEFORE PROCEEDING WITH THE WORK.
- C. IN CASE OF CONFLICT BETWEEN REQUIREMENTS, FOLLOW THE MOST STRINGENT REQUIREMENT INDICATED OR AS DIRECTED BY THE VHA CD WITHOUT ADDITIONAL COST TO THE OWNER.
- D. CONNECTIONS SHALL BE DESIGNED UNDER THE DEFERRED SUBMITTAL PART XIII OF THE GENERAL NOTES.
- E. DESIGN CONNECTIONS FOR LOADS SHOWN ON PLANS.

KEYNOTES

03 31 00.13A	3" NW CONCRETE ON 0.6C METAL DECK REFER PART XI ITEM N, SHEET S-002
05 05 23.111	MOMENT CONNECTION
05 12 00	STRUCTURAL STEEL FRAMING, REFER PLAN, SECTION AND DETAILS FOR SIZING AND DETAILING
05 12 00.A25A	HORIZONTAL CONNECTION MEMBER DESIGNED AND PROVIDED BY PRECAST MANUFACTURER PER SECTION 03 45 00
05 12 00.A25C	CONNECTION PLATE BEAM TO CONCRETE, REFER TO DETAIL/SCHEDULE REFER DETAIL 5/S-610
05 12 00.A104A	DECK STOP ANGLE L3x3x1/4XCONT.
05 12 00.B6	C12x20.7
05 12 00.C1	C1, REF STRUCTURAL COLUMN SCHEDULE
05 12 00.L51	HSS5x5x1/4
05 12 00.M107	W16x31
05 42 00.A8	1400S350-68 @ 1'-4" O.C.
05 42 00.A9	SIMPSON STRONG-TIE 3-1/2" x 14" 18-Gauge G90 GALVANIZED TOP MOUNT JOIST HANGER OR EQUAL REF DETAIL 5/S-511
06 16 00.D12	3/4" EXTERIOR GRADE TREATED PLYWOOD
09 22 00	EXTERIOR WALL SYSTEM, REF ARCH DWGS
09 22 16	FASCIA SYSTEM, REF ARCH DWGS
09 93 00.A2	CURTAIN WALL SYSTEM REFER TO ARCH DWGS

CONTRACT DOCUMENTS SUBMISSION
FULLY SPRINKLERED

0	100% BID DOCUMENTS	05/26/2023
Number:	Revisions:	Date:

CONSULTANTS:



ARCHITECT/ENGINEERS:



VEG 21.05

STAMP:



Drawing Title

ENLARGED DETAILS

Approved: Project Director

Phase

100% BID DOCUMENTS

Project Title

CONSTRUCT MENTAL HEALTH
OUTPATIENT BLDG 52 ADDITION

Location

2101 ELM STREET, FARGO, ND 58102

Issue Date

05/26/2023

Checked

SJF

Drawn

JH

Project Number

437-316

Building Number

52

Drawing Number

S-510
DWG 56 of 188

D:\Rev 2023\12\10_57TRUC_021_Lundysourc.mxd

A

B

C

D

E

F

A

B

C

D

E

F

GENERAL NOTES

- A. UNLESS NOTED OTHERWISE, ALL WORK SHALL CONFORM WITH THE REQUIREMENTS OF THE PROJECT SPECIFICATIONS. SPECIFICATIONS SHALL TAKE PRECEDENCE OVER GENERAL NOTES & TYPICAL DETAILS.
- B. PRIOR TO STARTING THE WORK, THE CONTRACTOR SHALL COMPARE THE INITIAL CONDITIONS SHOWN ON THE DRAWINGS WITH THE EXISTING SITE CONDITIONS. ANY DISCREPANCIES BETWEEN THE DRAWINGS AND SITE CONDITIONS SHALL BE REPORTED TO THE VHA COR AND RESOLVED BEFORE PROCEEDING WITH THE WORK.
- C. IN CASE OF CONFLICT BETWEEN REQUIREMENTS, FOLLOW THE MOST STRINGENT REQUIREMENT INDICATED OR AS DIRECTED BY THE VHA CO WITHOUT ADDITIONAL COST TO THE OWNER.
- D. CONNECTIONS SHALL BE DESIGNED UNDER THE DEFERRED SUBMITTAL PART XII OF THE GENERAL NOTES.
- E. DESIGN CONNECTIONS FOR LOADS SHOWN ON PLANS.

KEYNOTES

03 31 00.13A	3" NW CONCRETE ON 0.6C METAL DECK REFER PART XI ITEM N, SHEET S-002
05 12 00	STRUCTURAL STEEL FRAMING, REFER PLAN, SECTION AND DETAILS FOR SIZING AND DETAILING
05 12 00.A25A	HORIZONTAL CONNECTION MEMBER DESIGNED AND PROVIDED BY PRECAST MANUFACTURER PER SECTION 03 45 00
05 12 00.A25C	CONNECTION PLATE BEAM TO CONCRETE, REFER TO DETAIL/SCHEDULE REFER DETAIL S/S-610
05 12 00.A57A	L5x3 1/2 x3/8 CASTSTONE SILL SUPPORT
05 12 00.A104A	DECK STOP ANGLE L3x3x1/4XCONT.
05 12 00.B6	C12x20.7
05 12 00.B26	C4x5.4
05 12 00.C1	C1, REF STRUCTURAL COLUMN SCHEDULE
05 12 00.L51	HSS5x5x1/4
05 12 00.L56	HSS4x4x3/8
05 12 00.L137	HSS10x6x5/8
05 12 00.L230	HSS6x4x3/8 WINDOW SILL FOR CAST STONE AND BLAST SUPPORT
05 12 00.L239	HSS6x2x3/8 WINDOW HEADER FOR BLAST SUPPORT
05 12 00.M48	W12x40
05 12 00.M107	W16x31
05 12 00.M118	W18x40
05 42 00.A8	1400S350-68 @ 1'-4" O.C.
05 42 00.A9	SIMPSON STRONG-TIE 3-1/2" x 14" 18-Gauge G90 GALVANIZED TOP MOUNT JOIST HANGER OR EQUAL REF DETAIL S/S-S11
06 16 00.D12	3/4" EXTERIOR GRADE TREATED PLYWOOD
09 22 00	EXTERIOR WALL SYSTEM, REF ARCH DWGS
09 22 16	FASCIA SYSTEM, REF ARCH DWGS

CONTRACT DOCUMENTS SUBMISSION
FULLY SPRINKLERED

0	100% BID DOCUMENTS	05/26/2023
Number:	Revisions:	Date:

CONSULTANTS:



ARCHITECT/ENGINEERS:



VEG 21.05

STAMP:



Drawing Title

ENLARGED DETAILS

Approved: Project Director

Phase

100% BID DOCUMENTS

Project Title

CONSTRUCT MENTAL HEALTH
OUTPATIENT BLDG 52 ADDITION

Location

2101 ELM STREET, FARGO, ND 58102

Issue Date

05/26/2023

Checked

SJF

Drawn

JH

Project Number

437-316

Building Number

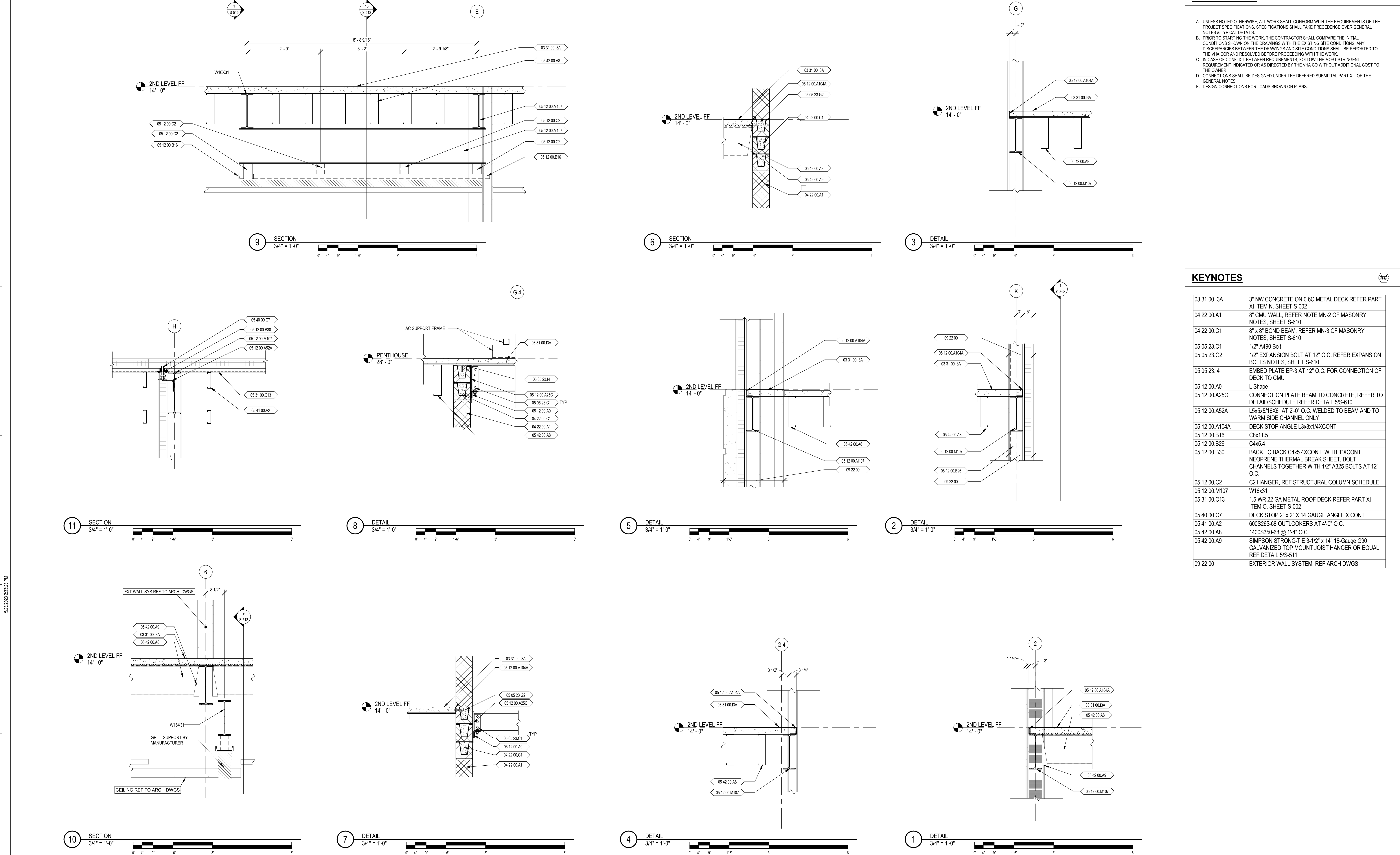
52

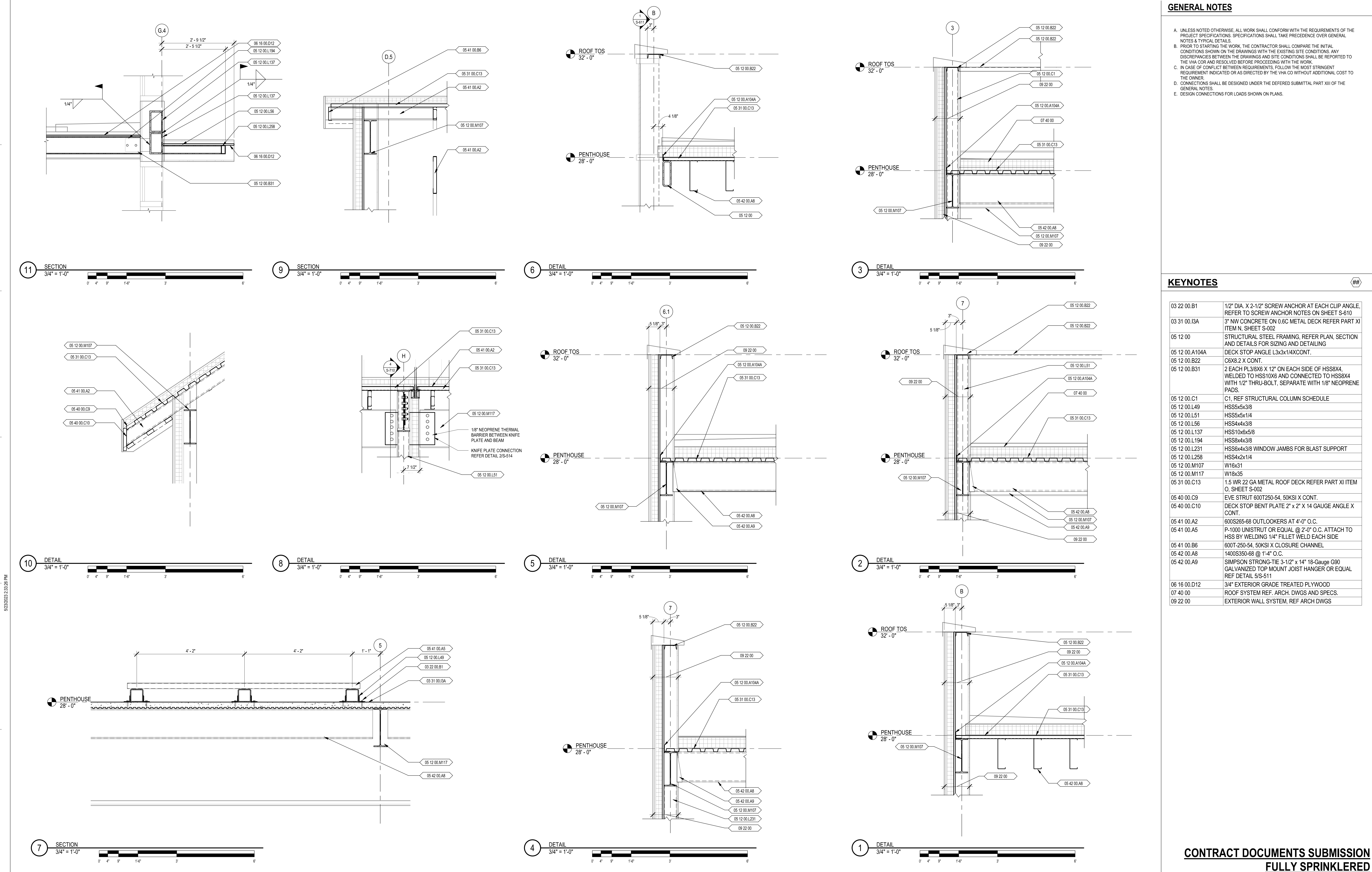
Drawing Number

S-511

DWG 57 of 188

D:\Rev 2021\2101_ELM_STREET_OC_021_Lundysmount





GENERAL NOTES

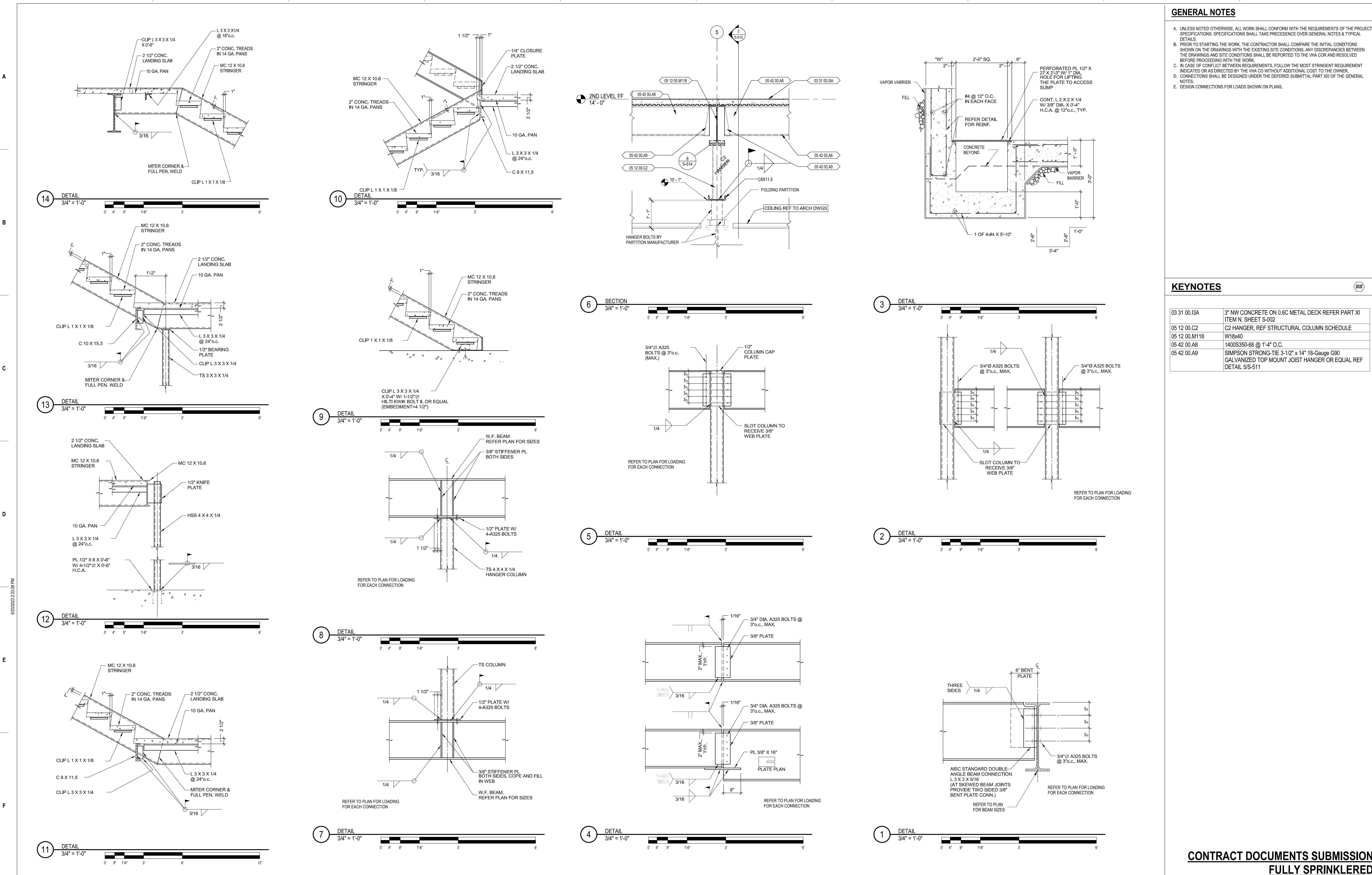
- A. UNLESS NOTED OTHERWISE, ALL WORK SHALL CONFORM WITH THE REQUIREMENTS OF THE PROJECT SPECIFICATIONS. SPECIFICATIONS SHALL TAKE PRECEDENCE OVER GENERAL NOTES & TYPICAL DETAILS.
- B. PRIOR TO STARTING THE WORK, THE CONTRACTOR SHALL COMPARE THE INITIAL CONDITIONS SHOWN ON THE DRAWINGS WITH THE EXISTING SITE CONDITIONS. ANY DISCREPANCIES BETWEEN THE DRAWINGS AND SITE CONDITIONS SHALL BE REPORTED TO THE VHA COR AND RESOLVED BEFORE PROCEEDING WITH THE WORK.
- C. IN CASE OF CONFLICT BETWEEN REQUIREMENTS, FOLLOW THE MOST STRINGENT REQUIREMENT INDICATED OR AS DIRECTED BY THE VHA CO WITHOUT ADDITIONAL COST TO THE OWNER.
- D. CONNECTIONS SHALL BE DESIGNED UNDER THE DEFERRED SUBMITTAL PART XIII OF THE GENERAL NOTES.
- E. DESIGN CONNECTIONS FOR LOADS SHOWN ON PLANS.

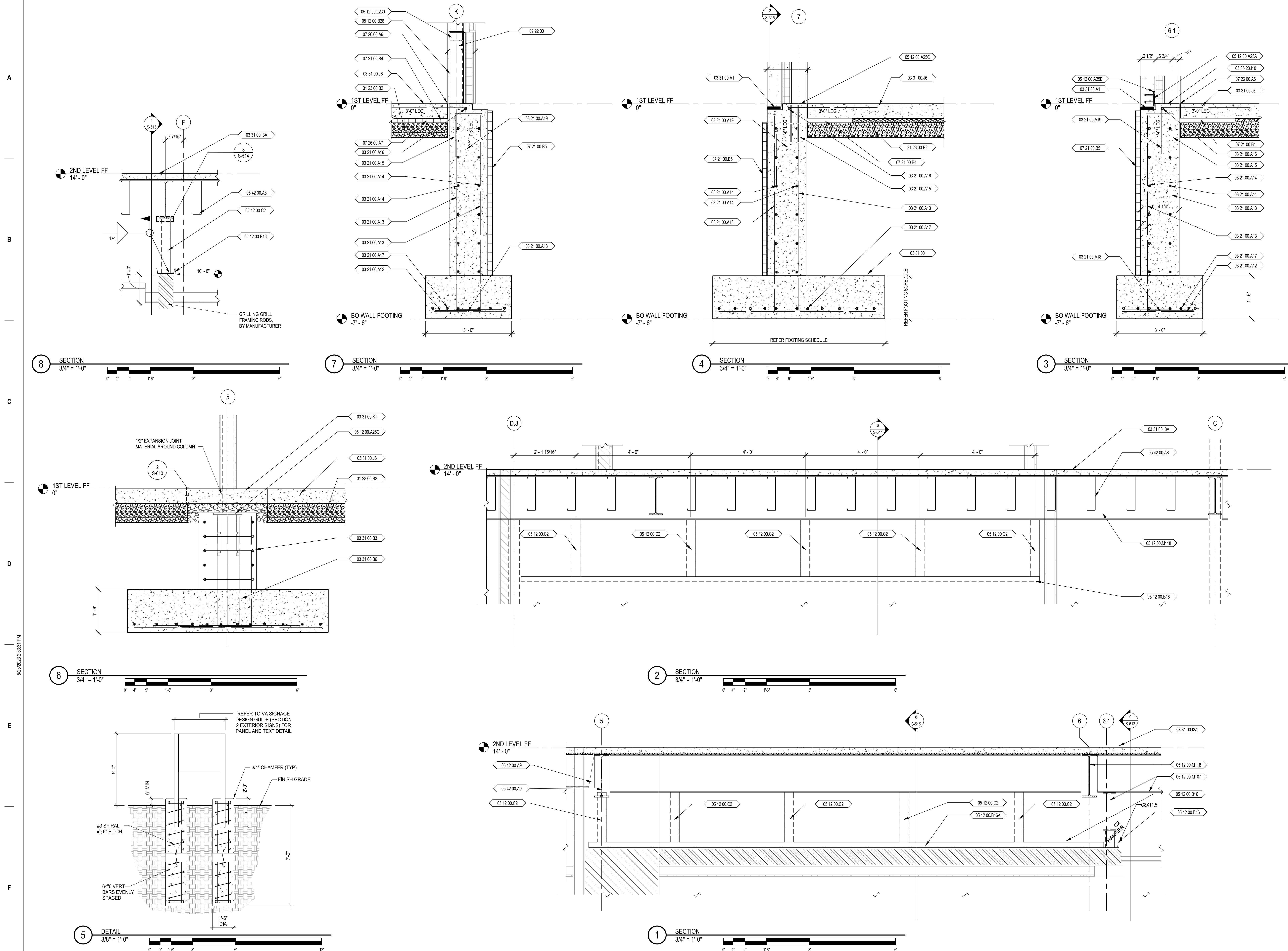
KEYNOTES

03 22 00.B1	1/2" DIA. X 2-1/2" SCREW ANCHOR AT EACH CLIP ANGLE. REFER TO SCREW ANCHOR NOTES ON SHEET S-610
03 31 00.I3A	3" NW CONCRETE ON 0.6C METAL DECK REFER PART XI ITEM N, SHEET S-002
05 12 00	STRUCTURAL STEEL FRAMING, REFER PLAN, SECTION AND DETAILS FOR SIZING AND DETAILING
05 12 00.A104A	DECK STOP ANGLE L3x3x1/4XCONT.
05 12 00.B22	05 12 00.B22
05 12 00.B31	2 EACH PL3/8X6 X 12" ON EACH SIDE OF HSS8X4, WELDED TO HSS10X6 AND CONNECTED TO HSS8X4 WITH 1/2" THRU-BOLT, SEPARATE WITH 1/8" NEOPRENE PADS.
05 12 00.C1	C1, REF STRUCTURAL COLUMN SCHEDULE
05 12 00.L49	HSS5x5x3/8
05 12 00.L51	HSS5x5x1/4
05 12 00.L56	HSS4x4x3/8
05 12 00.L137	HSS10x6x5/8
05 12 00.L194	HSS6x4x3/8
05 12 00.L231	HSS6x4x3/8 WINDOW JAMBS FOR BLAST SUPPORT
05 12 00.L258	HSS4x2x1/4
05 12 00.M107	W16x31
05 12 00.M117	W18x35
05 31 00.C13	1.5 W/ 22 GA METAL ROOF DECK REFER PART XI ITEM O, SHEET S-002
05 40 00.C9	EVE STRUT 600T250-54, 50KSI X CONT.
05 40 00.C10	DECK STOP BENT PLATE 2" x 2" X 14 GAUGE ANGLE X CONT.
05 41 00.A2	600S265-68 OUTLOOKERS AT 4'-0" O.C.
05 41 00.A5	P-1000 UNISTRUT OR EQUAL @ 2'-0" O.C. ATTACH TO HSS BY WELDING 1/4" FILLET WELD EACH SIDE
05 41 00.B6	600T-250-54, 50KSI X CLOSURE CHANNEL
05 42 00.A8	1400S350-68 @ 1'-4" O.C.
05 42 00.A9	SIMPSON STRONG-TIE 3-1/2" x 14" 18-Gauge G90 GALVANIZED TOP MOUNT JOIST HANGER OR EQUAL REF DETAIL 5/S-511
06 16 00.D12	3/4" EXTERIOR GRADE TREATED PLYWOOD
07 40 00	ROOF SYSTEM REF. ARCH. DWGS AND SPECS.
09 22 00	EXTERIOR WALL SYSTEM, REF ARCH DWGS

CONTRACT DOCUMENTS SUBMISSION
FULLY SPRINKLERED

0	100% BID DOCUMENTS	05/26/2023	CONSULTANTS:	ARCHITECT/ENGINEERS:	STAMP:	Drawing Title	Phase	Project Title	Project Number
						ENLARGED DETAILS	100% BID DOCUMENTS	CONSTRUCT MENTAL HEALTH OUTPATIENT BLDG 52 ADDITION	437-316
						Approved: Project Director		Location	Building Number
								2101 ELM STREET, FARGO, ND 58102	52
								Issue Date	Drawing Number
								05/26/2023	S-513
								Checked	DWG 59 of 188
								SJF	
								Drawn	
								JH	





GENERAL NOTES

- A. UNLESS NOTED OTHERWISE, ALL WORK SHALL CONFORM WITH THE REQUIREMENTS OF THE PROJECT SPECIFICATIONS. SPECIFICATIONS SHALL TAKE PRECEDENCE OVER GENERAL NOTES & TYPICAL DETAILS.
- B. PRIOR TO STARTING THE WORK, THE CONTRACTOR SHALL COMPARE THE INITIAL CONDITIONS SHOWN ON THE DRAWINGS WITH THE EXISTING SITE CONDITIONS. ANY DISCREPANCIES BETWEEN THE DRAWINGS AND SITE CONDITIONS SHALL BE REPORTED TO THE OWNER AND RESOLVED BEFORE PROCEEDING WITH THE WORK.
- C. IN CASE OF CONFLICT BETWEEN REQUIREMENTS, FOLLOW THE MOST STRINGENT REQUIREMENT INDICATED OR AS DIRECTED BY THE VMA CO WITHOUT ADDITIONAL COST TO THE OWNER.
- D. CONSTRUCTION SHALL BE DESIGNED UNDER THE DEFERRED SUBMITTAL PART XII OF THE GENERAL NOTES.
- E. DESIGN CONNECTIONS FOR LOADS SHOWN ON PLANS.

KEYNOTES

03 21 00.A12	#6 @ 8"o.c.
03 21 00.A13	#6 VERT. INSIDE BAR 8"o.c.
03 21 00.A14	#4 HORIZ. INSIDE BAR 12"o.c.
03 21 00.A15	#5 U-BARS @ 8"o.c.
03 21 00.A16	#4 X CONT.
03 21 00.A17	6- #5 X CONT. FROM WALL FOOTING
03 21 00.A18	HOOK VERTICAL BARS
03 21 00.A19	#5 DOWELS @ 12"o.c.
03 31 00	STRUCTURAL CONCRETE, REFER TO ASSOCIATED PLANS, DETAILS, BLOWUP SECTIONS AND SCHEDULES FOR SIZES AND REINFORCING. REFER TO PART V SHEET S-001 FOR ADDITIONAL INFORMATION.
03 31 00.A1	GROUT BELOW PRECAST PANEL, REFER PART IV ITEM C, SHEET S-001
03 31 00.B3	CONCRETE PLINTH, REFER SCHEDULE AND DETAILS ON SHEET S-610
03 31 00.B6	CONCRETE FOOTING REFER SCHEDULE AND DETAILS ON SHEET S-610
03 31 00.I3A	3" NW CONCRETE ON 0.6C METAL DECK REFER PART XI ITEM N, SHEET S-002
03 31 00.J6	6" SLAB ON GRADE, REINF. WITH #4 @ 12" O.C. IN TOP, REFER PART III, V AND VI, SHEET S-002, DETAILNOTES 1/S-620
03 31 00.K1	6" SLAB ON GRADE POUR BACK, REINF. WITH #4 @ 12" O.C. IN TOP, REFER PART III, V AND VI, SHEET S-002, DETAILNOTES 1/S-620
05 05 23.I10	EMBED PLATE EP-1
05 12 00.A25A	HORIZONTAL CONNECTION MEMBER DESIGNED AND PROVIDED BY PRECAST MANUFACTURER PER SECTION 03 45 00
05 12 00.A25B	EMBED PLATE DESIGNED AND PROVIDED BY PRECAST MANUFACTURER PER SECTION 03 45 00
05 12 00.A25C	CONNECTION PLATE BEAM TO CONCRETE, REFER TO DETAIL/SCHEDULE REFER DETAIL 5/S-610
05 12 00.B16	C8x11.5
05 12 00.B16A	DRILL HOLES IN CHANNEL ROLLING GRIL SUPPORT RODS
05 12 00.B26	C4x5.4
05 12 00.C2	C2 HANGER, REF STRUCTURAL COLUMN SCHEDULE
05 12 00.L230	HSS6x4x3/8 WINDOW SILL FOR CAST STONE AND BLAST SUPPORT
05 12 00.M107	W16x31
05 12 00.M118	W18x40
05 42 00.A8	1400S350-68 @ 1'-4" O.C.
05 42 00.A9	SIMPSON STRONG-TIE 3-1/2" x 14'-18-Gauge G90 GALVANIZED TOP MOUNT JOIST HANGER OR EQUAL REF DETAIL 5/S-511
07 21 00.B4	2" RIGID INSULATION BELOW SLAB, REFER ARCH DWGS/SPECS
07 21 00.B5	VERTICAL RIGID INSULATION AGAINST EXTERIOR WALL FOOTING, REFER ARCH DWGS/SPECS
07 26 00.A6	THERMAL BARRIER
07 26 00.A7	INSULATION
09 22 00	EXTERIOR WALL SYSTEM, REF ARCH DWGS
31 23 00.B2	8" COMPACTED GRAVEL SUB-BASE

CONTRACT DOCUMENTS SUBMISSION
FULLY SPRINKLERED

Project Title CONSTRUCT MENTAL HEALTH OUTPATIENT BLDG 52 ADDITION			Project Number 437-316	
			Building Number 52	
Location 2101 ELM STREET, FARGO, ND 58102			Drawing Number S-515	
Issue Date 05/26/2023	Checked SJF	Drawn JH	DWG 61 of 188	

A

B

C

D

E

F

A

B

C

D

E

F





GENERAL NOTES

- SHEAR WALL NOTES:
1. INSTALL SHEATHING EITHER HORIZONTALLY OR VERTICALLY.
 2. WHERE SHEATHING IS APPLIED ON BOTH SIDES OF WALL, PANEL EDGE JOINTS ON DOUBLE STUD FRAMING SHALL BE STAGGERED SO THAT JOINTS ON THE OPPOSITE SIDES ARE NOT LOCATED ON THE SAME STUDS.
 3. BLOCKING IS REQUIRED AT ALL SHEATHING EDGES. SEE SCHEDULE FOR SIZE.
 4. PROVIDE SHEAR WALL SHEATHING AND SCREWS FOR THE ENTIRE LENGTH OF THE WALLS INDICATED ON THE PLANS. ENDS OF FULL HEIGHT WALLS ARE DESIGNATED BY WINDOWS, DOORWAYS OR AS DESIGNATED ON PLANS.
 5. SHEATHING EDGE SCREWING IS REQUIRED AT ALL SHEAR WALL END POSTS. WHERE END POST IS COMPRISED OF MULTIPLE MEMBERS, STAGGER EDGE SCREWING EQUALLY TO EACH MEMBER. IN ADDITION, SISTER EACH MEMBER PER SHEAR WALL NOTE 14.
 6. SCREW SIZE TO BE #10 TEK SCREW WITH FULL PENETRATION IN STUD.
 7. STAGGER SCREWING AT SHEATHING EDGES WHEN SCREWS ARE SPACED AT 4" O/C OR LESS.
 8. INTERMEDIATE FRAMING SHALL BE DOUBLE STUD/MINIMUM MEMBERS. ATTACH SHEATHING TO INTERMEDIATE FRAMING WITH #10 TEK SCREWS @ 8" O/C WHERE STUDS ARE SPACED AT 12" O/C.
 9. BASED ON #10 TEK SCREWS USED TO ATTACH FRAMING CLIPS DIRECTLY TO FRAMING. USE #12 TEK SCREWS NAILS WHERE INSTALLED OVER SHEATHING.
 10. FRAMING CLIPS: CLARK DETTRICH CDBV OR CDMB OR APPROVED EQUIVALENT. SEE DETAILS.
 11. WHERE BOTTOM PLATE ATTACHMENT SPECIFICS (2) ROWS OF NAILS, PROVIDE DOUBLE JOIST, RIM JOIST OR EQUAL BELOW. STAGGER NAILS IN ROWS 1-1/2" APART MINIMUM.
 12. TYPICAL SCREW ANCHORS SHALL BE PROVIDED WITH STEEL PLATE WASHERS 1/4"x2"x3". LOCATE ANCHORS SUCH THAT THE EDGE OF EACH PLATE WASHER IS WITHIN 12" OF WALL SHEATHING. SLOTTED HOLES UP TO 1-3/4" LONG ARE PERMITTED IN PLATE WASHERS. EMBED ANCHOR BOLTS 3" MINIMUM INTO CONCRETE UNLESS SHOWN OTHERWISE.
 13. PRESSURE TREATED MATERIAL CAN CAUSE EXCESSIVE CORROSION IN THE FASTENERS. PROVIDE HOT-DIPPED GALVANIZED (ELECTRO-PLATING IS NOT ACCEPTABLE) SCREWS AND CONNECTOR PLATES (FRAMING ANGLES, ETC.) FOR ALL CONNECTORS IN CONTACT WITH PRESSURE TREATED FRAMING MEMBERS AND/OR WHERE EXPOSED TO MOISTURE/HUMIDITY.
 14. DO NOT APPLY WOOD SHEATHING OVER GYPSUM BOARD.
 15. AT ADJOINING SHEATHING EDGES, DOUBLE METAL STUDS SCREWED TOGETHER MAY BE USED IN PLACE OF A BUILT UP STUD. FASTEN DOUBLE METAL STUDS TOGETHER WITH #10 TEK SCREWS WITH THE SAME DIAMETER AND AT THE SAME SPACING AS THE PLATE SCREWING. ALL BUILT-UP END POSTS SHALL BE SCREWED SIMILARLY.
 16. SEE TYPICAL DETAILS FOR ANCHOR BOLT OPTIONS. SEE STRUCTURAL NOTES FOR SPECIAL INSPECTION REQUIREMENTS.
 17. PROVIDE (2) ROWS OF SCREWS WITH 1/2" ROW SPACING TO TOP TRACK WHERE BOTTOM PLATE SCREWING IS 3" O/C OR LESS.
 18. WHERE SHEATHING OCCURS ON BOTH SIDES OF WALL, PROVIDE BLOCKING IN ACCORDANCE WITH DETAILS AND ONE ROW OF PLATE SCREWING TO EACH PLY.

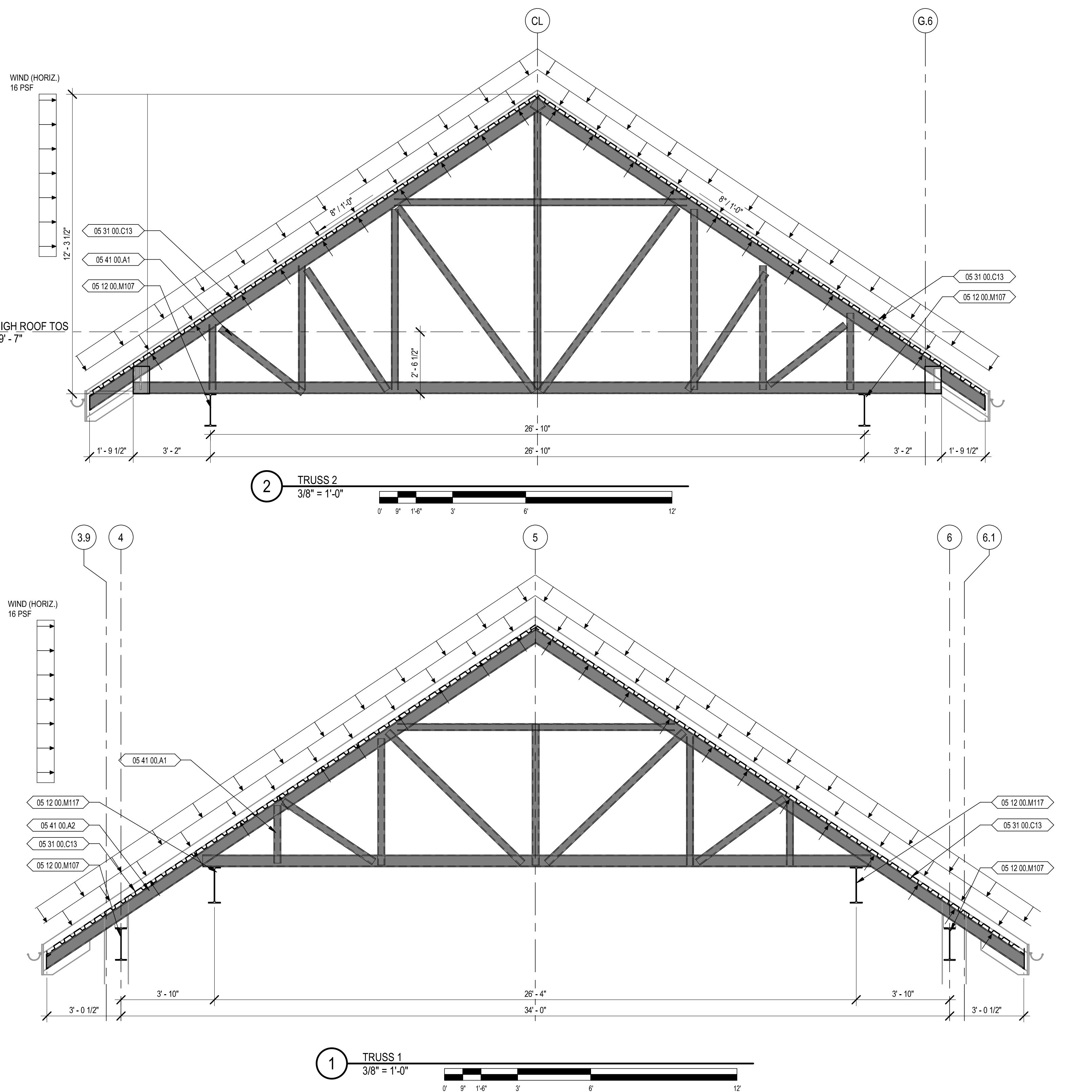
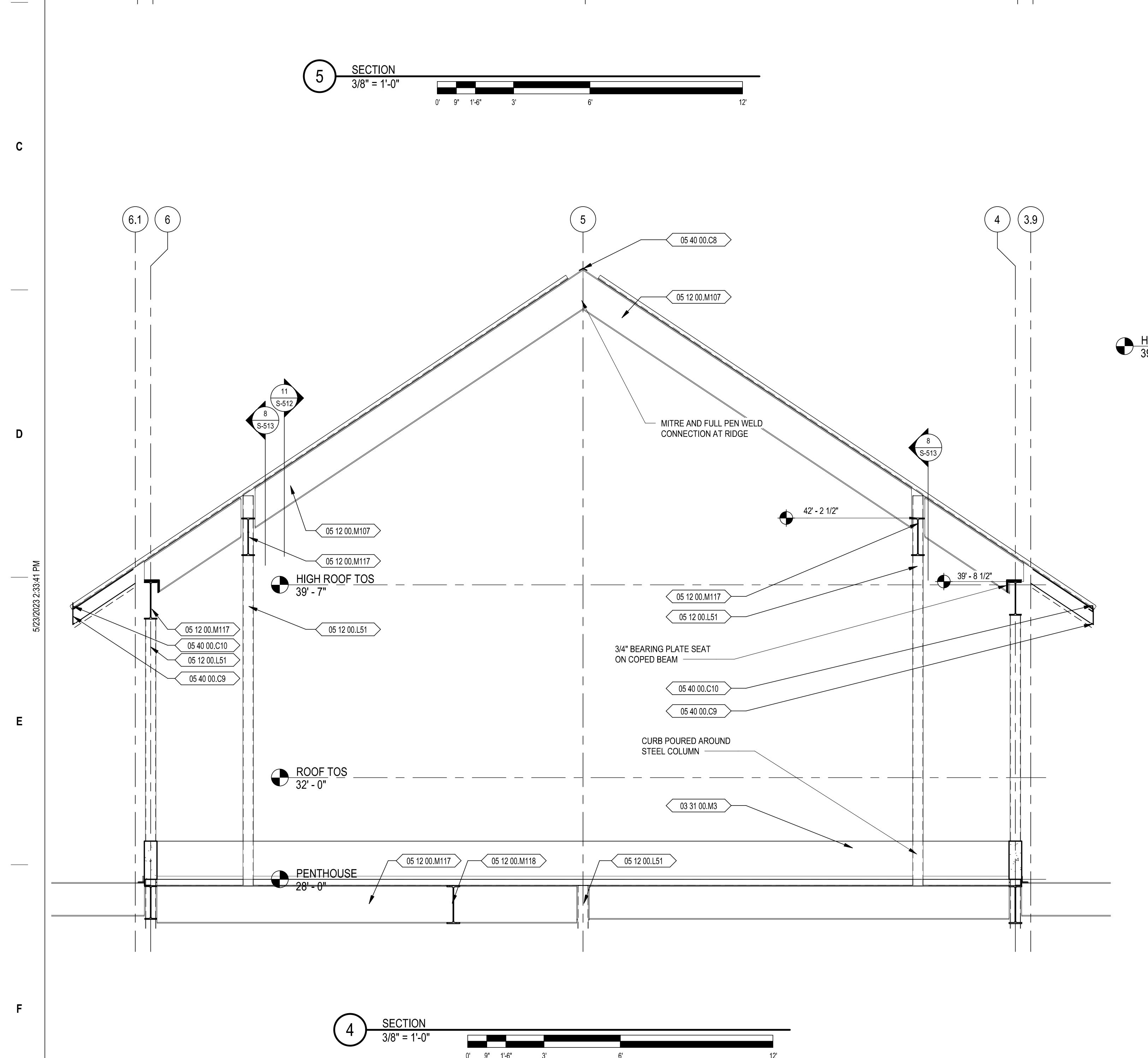
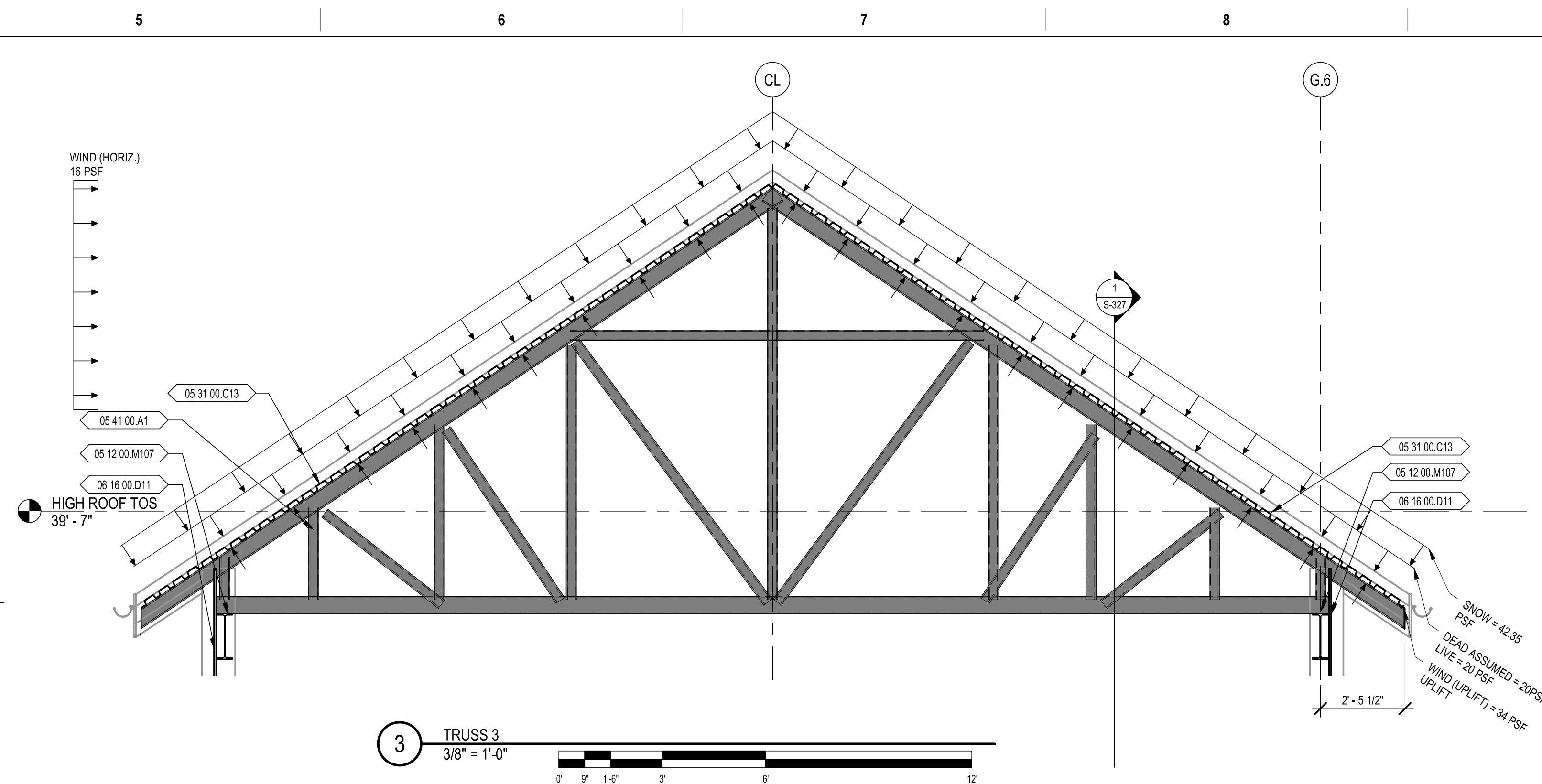
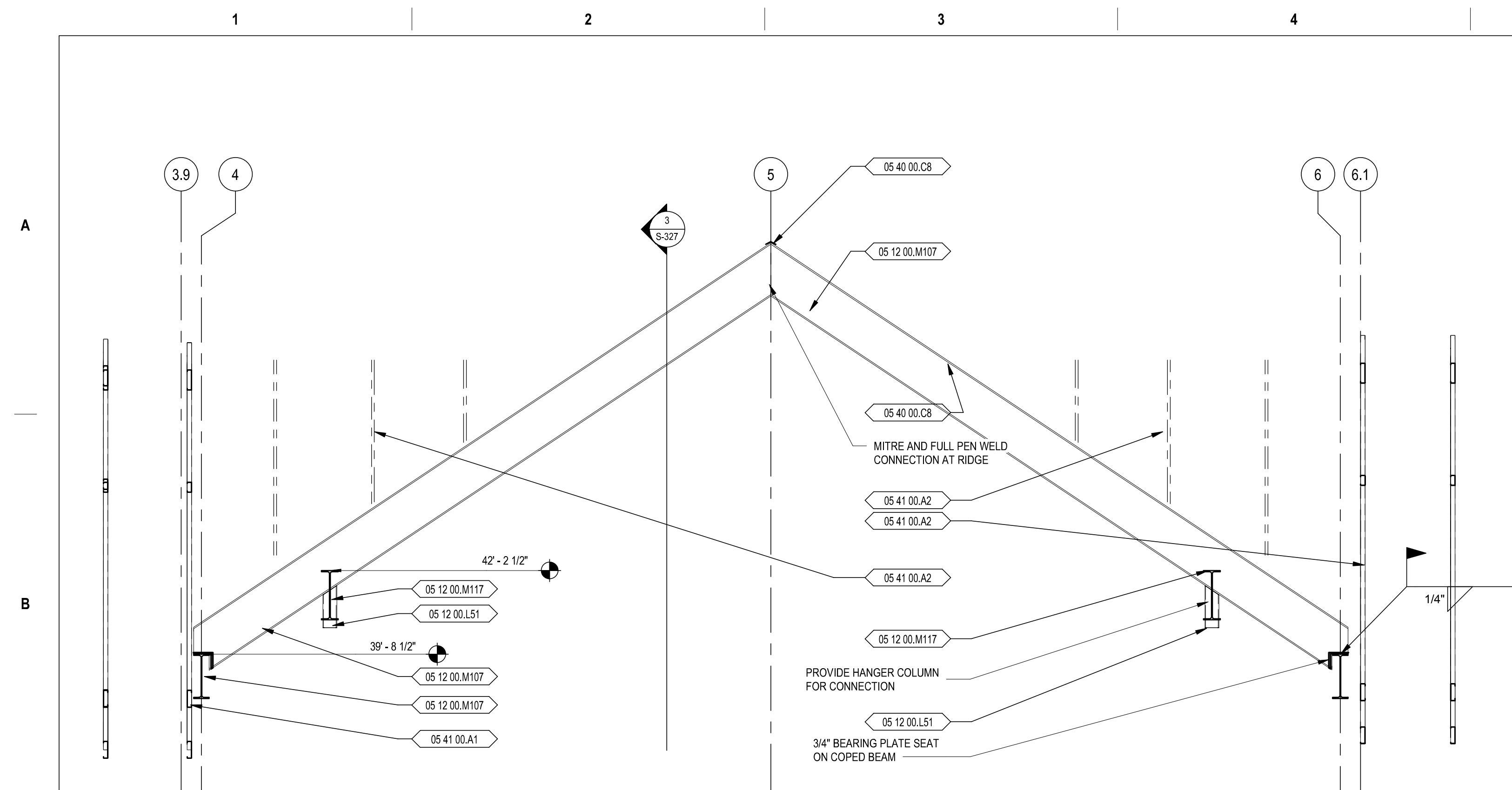
KEYNOTES

03 22 00.B1	1/2" DIA. X 2-1/2" SCREW ANCHOR AT EACH CLIP ANGLE. REFER TO SCREW ANCHOR NOTES ON SHEET S-610
03 31 00	STRUCTURAL CONCRETE, REFER TO ASSOCIATED PLANS, DETAILS, BLOWUP SECTIONS AND SCHEDULES FOR SIZES AND REINFORCING. REFER TO PART V SHEET S-001 FOR ADDITIONAL INFORMATION.
03 31 00.13A	3" NW CONCRETE ON 0.6C METAL DECK REFER PART XI ITEM N, SHEET S-002
03 31 00.J6	6" SLAB ON GRADE, REINF. WITH #4 @ 12" O.C. IN TOP. REFER PART III, V AND VI, SHEET S-002, DETAIL/NOTES 1/S-620
05 12 00.A104A	DECK STOP ANGLE L3x3x1/4XCONT.
05 12 00.B22	C6X8.2 X CONT.
05 12 00.L0	Tube Shape
05 12 00.L51	HSS5x5x1/4
05 12 00.M107	W16x31
05 31 00.C13	1.5 WR 22 GA METAL ROOF DECK REFER PART XI ITEM Q, SHEET S-002
05 40 00	COLD-FORMED METAL FRAMING REFER PART XII AND SECTION 0540000 FOR CRITERIA
06 05 23.A1	2 Penny Nail
06 16 00.D11	3/4" PLYWOOD
07 21 00.B5	VERTICAL RIGID INSULATION AGAINST EXTERIOR WALL FOOTING. REFER ARCH DWGS/SPECS
09 22 00	EXTERIOR WALL SYSTEM, REF ARCH DWGS
31 23 00.B2	8" COMPACTED GRAVEL SUB-BASE

CONTRACT DOCUMENTS SUBMISSION
FULLY SPRINKLERED

0	100% BID DOCUMENTS	05/26/2023	CONSULTANTS:	ARCHITECT/ENGINEERS:	STAMP:	Drawing Title	Phase	Project Title	Project Number
						SHEAR WALL DETAILS	100% BID DOCUMENTS	CONSTRUCT MENTAL HEALTH OUTPATIENT BLDG 52 ADDITION	437-316
						Approved: Project Director		Location	Building Number
								2101 ELM STREET, FARGO, ND 58102	52
								Issue Date	Drawing Number
								05/26/2023	S-611
								Checked	DWG 64 of 188
								SJF	
								JH	

D:\Rev 2023\105_57RUC_021_Lundysourc...
5/26/2023 2:33:37 PM



- # GENERAL NOTES
- A. COLD-FORMED STEEL (CFS) REQUIREMENTS PER THE SPECIFICATIONS. ADDITIONAL INFORMATION LISTED HERE FOR REFERENCE ONLY. ALL STRUCTURAL STEEL GAUGE FRAMING MEMBERS, JOISTS, STUDS, TRACKS, BRIDGING, ETC. SHALL BE OF THE TYPE, SIZE, AND EQUIVALENT STRUCTURAL EQUIVALENTS TO THOSE SPECIFIED OR COMPUTED IN ACCORDANCE WITH THE LATEST EDITION OF THE AISI' SPECIFICATIONS FOR THE DESIGN OF COLD FORMED STEEL STRUCTURAL MEMBERS."
- C. COLD FORMED STEEL FRAMING SHALL BE FABRICATED BY A CURRENT MEMBER OF THE STEEL STUD MANUFACTURERS ASSOCIATION (SSMA).
- D. FRAMING SPECIFIED SHALL HAVE MINIMUM PROPERTIES NOTED IN THE CURRENT SSMA PUBLICATION, COLD FORM STEEL MATERIAL CRITERIA.
- E. STUD AND TRACK PROFILES SHALL BE STANDARD SECTIONS USED BY MEMBERS OF THE STEEL STUD MANUFACTURER ASSOCIATION (SSMA). SSMA MEMBER DESIGNATIONS AS SHOWN ON THE FOLLOWING EXAMPLE:
- 606 S16-42.5 REPRESENTS A 6.00" DEEP, STUD SECTION, 1.625" WIDE FLANGE, 0.043" (43 MILS) MINIMUM STEEL THICKNESS.
 - 1. S = STUD SECTION
 - 2. T = TRACK SECTION
 - U = CHANNEL SECTION
 - F = FURRING CHANNEL
- F. UNLESS NOTED OTHERWISE ON THE DRAWINGS, MEMBERS SHALL HAVE THE FOLLOWING YIELD STRENGTHS:
- STUDS 33, 43 MIL THICKNESS FY = 33 KSI
 - STUDS 54, 60, 87, 91 MIL THICKNESS FY = 50 KSI
 - TRACKS 33, 43, 54, 60, 87, 91 MIL THICKNESS FY = 33 KSI
 - U-CHANNELS, FURRING CHANNELS FY = 33 KSI
 - ALL COLD-FORMED STEEL FRAMING MATERIALS SHALL HAVE A MINIMUM G60 GALVANIZED COATING.
- G. COLD FORM STEEL CONNECTION CRITERIA:
1. CONNECTIONS NOT FULLY DETAILD ON THE CONTRACT DOCUMENTS SHALL BE DESIGNED BY THE CONTRACTOR PER THE SPECIFICATION.
2. SCREWS, UNLESS OTHERWISE SPECIFIED, SHALL BE AS FOLLOWS:
- SHEET STEEL TO SHEET STEEL #10-16, 5/8" LONG INCH SPILL DRILLING SCREWS.
 - SHEET STEEL TO STRUCTURAL STEEL #12-24, 1-1/2" LONG INCH SPILL DRILLING SCREWS WITH NO 5 TIE STEEL.
3. POWDER ACTIVATED FASTENERS, UNLESS NOTED OTHERWISE, PAF SHALL BE AS FOLLOWS:
- SHEET STEEL TO CONCRETE: 0.145" DIAMETER, 1-1/4" LONG, SMOOTH SHANK.
 - SHEET STEEL TO TENSION-CRACKED CONCRETE: 0.145" DIAMETER, 3/4" LONG, SMOOTH SHANK.
 - SHEET STEEL TO STRUCTURAL STEEL, 0.145" DIAMETER, 3/4" LONG, UNWELDED SHANK.
- H. WELDING:
- WELDING PROCEDURES FOR SHEET STEEL TO BE IN ACCORDANCE WITH AWS D13. WELDERS SHALL BE CERTIFIED FOR SHEET STEEL IN ALL POSITIONS REQUIRED PER AWS D13.
 - SUGGESTED WELD METAL THICKNESS (T) MUST MATCH OR EXCEED THE BASE STEEL METAL THICKNESS (MINIMUM) - MIG.
 - SUGGESTED METHODS FOR FIELD WELDING: 1/8" INCH (60KX) MINIMUM ELECTRODE - SMAW-D.
 - MINIMUM WELD THROAT THICKNESS (T) MUST MATCH OR EXCEED THE BASE STEEL THICKNESS OF THE THINNEST CONNECTED STEEL, UNLESS NOTED OTHERWISE.

KEYNOTES		##
03 31 00.M3	CONCRETE CURB 6" X 1'- 6" REINF. W/ #4 VERTICALS @ 12" O.C. AND 3 #4 HORIZONTALS X CONT.	
05 12 00.L51	HSS5x5x1/4	
05 12 00.M107	W16x31	
05 12 00.M117	W18x35	
05 12 00.M118	W18x40	
05 31 00.C13	1.5 WR 22 GA METAL ROOF DECK REFER PART XII ITEM O, SHEET S-002	
05 40 00.C8	BENT PLATE 1/4" X 4 X 4 X CONT. AT RIDGE AND VALLEYS, ATTACHED TOP DECK WITH #10 TEK SCREWS AT 6" O.C.	
05 40 00.C9	EVE STRUT 60T7250-54, 50KSI X CONT.	
05 40 00.C10	COLD FORM BENT PLATE 2" X 2" X 1/4 GAUGE ANGLE X CONT.	
05 41 00.A1	COLD FORMED METAL FRAMING TRUSSES, PREFAB AND DESIGNED PER PART XII AND SUBMITTED PER PART XIII ITEM B. REFER TO SHEET S-710 AND FOR GENERAL CONFIGURATION	
05 41 00.A2	60US265-8B OUTLOOKERS AT 4'-0" O.C.	
06 14 00.D11	3/4" PLYWOOD	

CONTRACT DOCUMENTS SUBMISSION
FULLY SPRINKLERED

Project Title CONSTRUCT MENTAL HEALTH OUTPATIENT BLDG 52 ADDITION			Project Number 437-316	
			Building Number 52	
Location 2101 ELM STREET, FARGO, ND 58102			Drawing Number S-710 DWG 65 of 188	
Issue Date 05/26/2023	Checked SJF	Drawn JH		

0	100% BID DOCUMENTS	05/26/2023
Number:	Revisions:	Date:

CONSULTANTS:

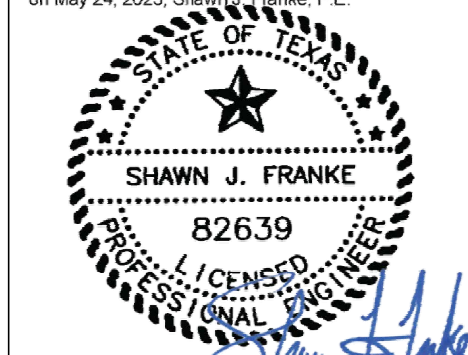


ARCHITECT/ENGINEERS:



VEG 21.05

STAMP:



U.S. Department
of Veterans Affairs

Drawing Title	TRUSS ELEVATIONS
---------------	------------------

Approved: Project Director

Phase	100% BID DOCUMENTS
-------	--------------------

Project Title
CONSTRUCT MENTAL HEALTH
OUTPATIENT BLDG 52 ADDITION

Location

Issue Date

Checked	
---------	--

Drawn	...
-------	-----

Project Number	437-316
----------------	---------

Building Number	52
-----------------	----

	Drawing Number

S-710

DWG 65 of 188