

three inches = one foot
one and one half inches = one foot
one inch = one foot
three quarters inch = one foot
one half inch = one foot
three eighths inch = one foot
one quarter inch = one foot
one eighth inch = one foot
one sixteenth inch = one foot

10/25/2021 10:30:50 AM

P:\2021\2021-2027\VA-CAD Drawings\Arch\211021 DOM BR_202.rvt

VA FORM 08 - 6231

1 BUILDING FIRST FLOOR DEMOLITION PLAN

SCALE: 3/8"=1'-0"

THE ENTIRETY OF THE PORCH FIRST FLOOR FRAMING IS TO BE DEMOLISHED AND REPLACED, CONTRACTOR TO REFER TO PORCH SPECIFIC FRAMING PLANS (SHEETS SE-111 AND SE-112) AS WELL AS PORCH ELEVATION SHEETS (SHEET SERIES SE-20x) FOR ADDL INFO

APPROX LOC OF (N) STAIRWAY SEE ARCH DWG'S FOR LOCATION AND EXTENT

CONTRACTOR TO SAWCUT AND DEMOLISH EXTENT OF 1ST FLOOR STONE WALL, THE (N) STRUCTURAL STEEL SHOWN IN THE SE-1xx SERIES SHEETS IS TO BE INSTALLED PRIOR TO THE FULL DEMOLITION OF THIS (E) STONE WALL. CONTRACTOR MAY NEED TO PROVIDE TEMPORARY SHORING FOR (E) ADJACENT FRAMING THAT BEARS ON THE (E) STONE WALL

CONTRACTOR TO DEMO (SAWCUT) EXTENT OF BSMT FLOOR STONE WALL ABOVE (E) BSMT DOOR OPNG, SEE ARCH DWG'S FOR EXTENT

TO (E) CONC
100'-0"

(N) THRU FLOOR CHASE PROVIDE ENGINEERED TEMPORARY SHORING AS REQD FOR (E) JST'S TO BE CUT

CONTRACTOR TO SAWCUT AND DEMOLISH EXTENT OF 1ST FLOOR STONE WALL, THE (N) STRUCTURAL STEEL SHOWN IN THE SE-1xx SERIES SHEETS IS TO BE INSTALLED PRIOR TO THE FULL DEMOLITION OF THIS (E) STONE WALL. CONTRACTOR MAY NEED TO PROVIDE TEMPORARY SHORING FOR (E) ADJACENT FRAMING THAT BEARS ON THE (E) STONE WALL

CONTRACTOR TO DEMO (SAWCUT) EXTENT OF BSMT FLOOR STONE WALL ABOVE (E) BSMT DOOR OPNG, SEE ARCH DWG'S FOR EXTENT

(E) 2x1 1/2" JST @ 16" C.C. TO JST (E): 99'-6" ENGINEERED TEMP SHORING REQD

(E) CAST IRON COL TO BE REMOVED AND REPLACED

(E) 115x50.0 STL BM. TOS (E): 98'-6 1/2" BM TO BE REMOVED

(E) 2x8 JST @ 16" C.C. TO (E) CONC 100'-0"

(E) 2x8 JST @ 16" C.C. TO (E) CONC 100'-0"

(E) 2x8 JST @ 16" C.C. TO (E) CONC 100'-0"

(E) 2x8 JST @ 16" C.C. TO (E) CONC 100'-0"

(E) 2x8 JST @ 16" C.C. TO (E) CONC 100'-0"

(E) 2x8 JST @ 16" C.C. TO (E) CONC 100'-0"

(E) 2x8 JST @ 16" C.C. TO (E) CONC 100'-0"

(E) 2x8 JST @ 16" C.C. TO (E) CONC 100'-0"

(E) 2x8 JST @ 16" C.C. TO (E) CONC 100'-0"

(E) 2x8 JST @ 16" C.C. TO (E) CONC 100'-0"

(E) 2x8 JST @ 16" C.C. TO (E) CONC 100'-0"

(E) 2x8 JST @ 16" C.C. TO (E) CONC 100'-0"

(E) 2x8 JST @ 16" C.C. TO (E) CONC 100'-0"

(E) 2x8 JST @ 16" C.C. TO (E) CONC 100'-0"

(E) 2x8 JST @ 16" C.C. TO (E) CONC 100'-0"

(E) 2x8 JST @ 16" C.C. TO (E) CONC 100'-0"

(E) 2x8 JST @ 16" C.C. TO (E) CONC 100'-0"

(E) 2x8 JST @ 16" C.C. TO (E) CONC 100'-0"

(E) 2x8 JST @ 16" C.C. TO (E) CONC 100'-0"

(E) 2x8 JST @ 16" C.C. TO (E) CONC 100'-0"

(E) 2x8 JST @ 16" C.C. TO (E) CONC 100'-0"

(E) 2x8 JST @ 16" C.C. TO (E) CONC 100'-0"

(E) 2x8 JST @ 16" C.C. TO (E) CONC 100'-0"

(E) 2x8 JST @ 16" C.C. TO (E) CONC 100'-0"

(E) 2x8 JST @ 16" C.C. TO (E) CONC 100'-0"

(E) 2x8 JST @ 16" C.C. TO (E) CONC 100'-0"

(E) 2x8 JST @ 16" C.C. TO (E) CONC 100'-0"

(E) 2x8 JST @ 16" C.C. TO (E) CONC 100'-0"

(E) 2x8 JST @ 16" C.C. TO (E) CONC 100'-0"

(E) 2x8 JST @ 16" C.C. TO (E) CONC 100'-0"

(E) 2x8 JST @ 16" C.C. TO (E) CONC 100'-0"

(E) 2x8 JST @ 16" C.C. TO (E) CONC 100'-0"

(E) 2x8 JST @ 16" C.C. TO (E) CONC 100'-0"

(E) 2x8 JST @ 16" C.C. TO (E) CONC 100'-0"

(E) 2x8 JST @ 16" C.C. TO (E) CONC 100'-0"

(E) 2x8 JST @ 16" C.C. TO (E) CONC 100'-0"

(E) 2x8 JST @ 16" C.C. TO (E) CONC 100'-0"

(E) 2x8 JST @ 16" C.C. TO (E) CONC 100'-0"

(E) 2x8 JST @ 16" C.C. TO (E) CONC 100'-0"

(E) 2x8 JST @ 16" C.C. TO (E) CONC 100'-0"

(E) 2x8 JST @ 16" C.C. TO (E) CONC 100'-0"

(E) 2x8 JST @ 16" C.C. TO (E) CONC 100'-0"

(E) 2x8 JST @ 16" C.C. TO (E) CONC 100'-0"

(E) 2x8 JST @ 16" C.C. TO (E) CONC 100'-0"

(E) 2x8 JST @ 16" C.C. TO (E) CONC 100'-0"

(E) 2x8 JST @ 16" C.C. TO (E) CONC 100'-0"

(E) 2x8 JST @ 16" C.C. TO (E) CONC 100'-0"

(E) 2x8 JST @ 16" C.C. TO (E) CONC 100'-0"

(E) 2x8 JST @ 16" C.C. TO (E) CONC 100'-0"

(E) 2x8 JST @ 16" C.C. TO (E) CONC 100'-0"

TOP (E) TYP @ (14) LOC'S 98'-1 1/4"

CONTRACTOR TO DEMO & REMOVE (E) JOISTS IN THE AREA SHOWN FOR THE NEW STAIRWAY DOWN TO THE BASEMENT

(E) LOWER ARCADE FLOOR FRAMING NOT REVIEWED AS PART OF THIS PROJECT

CONTRACTOR TO DEMO AND REMOVE (E) 2x8 RAMP JST FRAMING AND (E) 2x6 WALL

TO (E) CONC 96'-10 1/2"

(E) INTERMEDIATE LANDING

RAMP UP

PORTION OF (E) STONE WALL TO BE DEMOLISHED AND REMOVED, SEE ARCH DWG'S FOR EXTENTS

WIN THE LINK AREA, CONTRACTOR TO DEMOLISH (E) 2x6 WALL AND RAMP FRAMING FROM 1ST FLOOR TO UPPER ARCADE

APPROX LOC OF (N) ELEVATOR SHAFT (E) JST'S ALONG THIS LINE WILL REQ ENGINEERED TEMPORARY SHORING FOR NEW ELEVATOR SHAFT

(E) JST'S ALONG THIS LINE WILL REQ ENGINEERED TEMPORARY SHORING FOR NEW ELEVATOR SHAFT

SHEET NOTES

BUILDING FIRST FLOOR DEMOLITION PLAN NOTES

- SEE SHEET SE-001 FOR STRUCTURAL NOTES.
- VERIFY ALL DIMENSIONS, ELEVATIONS, AND EXISTING CONDITIONS WITH ARCHITECTURAL DRAWINGS BEFORE CONSTRUCTION COMMENCES.
- ELEVATIONS ON THE STRUCTURAL DRAWINGS REFER TO THE TOP OF THE MAIN (FIRST) FLOOR CONCRETE REFERENCE ELEVATION SET AT 100'-0".
- CONTRACTOR IS TO SAWCUT EXISTING STONE WALLS AS PART OF THE DEMOLITION SHOWN. THESE SAWCUTS ARE TO PENETRATE THE FULL WALL THICKNESS PRIOR TO REMOVAL OF EXISTING STONE SECTIONS.
- PRIOR TO DEMOLITION, CONTRACTOR IS TO SUBMIT A DELEGATED DESIGN FOR TEMPORARY SHORING AT THE DIFFERENT AREAS. THE ENGINEER OF RECORD FOR THE TEMPORARY SHORING IS TO HOLD A VALID SOUTH DAKOTA ENGINEERING LICENSE.

ISSUE #	DESCRIPTION	DATE
1	BID DOCUMENTS	06/03/2025

CONSULTANTS

STRUCTURAL:
ALBERTSON ENGINEERING, INC.
3202 W. MAIN ST., #C
RAPID CITY, SD 57702
605-343-9606
STEPHEN KILBER



MEP:
WEST PLAINS ENGINEERING, INC.
1750 RAND ROAD
RAPID CITY, SD 57702
605-348-7455
MIKE SIGMAN (ELEC)
MICHAEL HEINRICH (MECH)

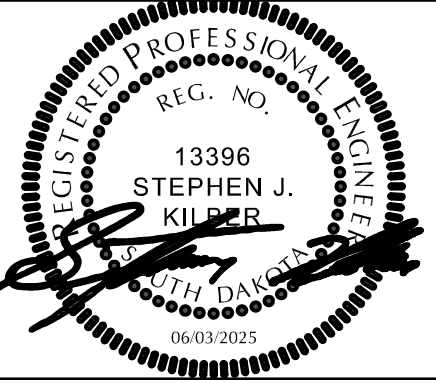
WPE WEST PLAINS ENGINEERING, INC.

DESIGNER OF RECORD

A/E:
STONE GROUP ARCHITECTS
600 EAST 7TH ST
SIOUX FALLS, SD 57103
605-271-1144
TODD STONE



STAMP



Office of
Construction
and Facilities
Management



U.S. Department
of Veterans Affairs

Drawing Title
BUILDING FIRST FLOOR DEMOLITION PLAN

Approved:
DOUG SPRINKLE

Phase
BID DOCUMENTS

FULLY SPRINKLERED

Project Title
DOM RENOVATION FOR
SEMPRIVATE ROOMS

Location
HOT SPRINGS, SOUTH DAKOTA

Issue Date
06/03/2025

Checked
MDA

Drawn
SJK

Project Number
VA #568A4-21-208
SGA 211921

Building Number
8

Drawing Number
SD-102



BUILDING SECOND FLOOR DEMOLITION PLAN NOTES

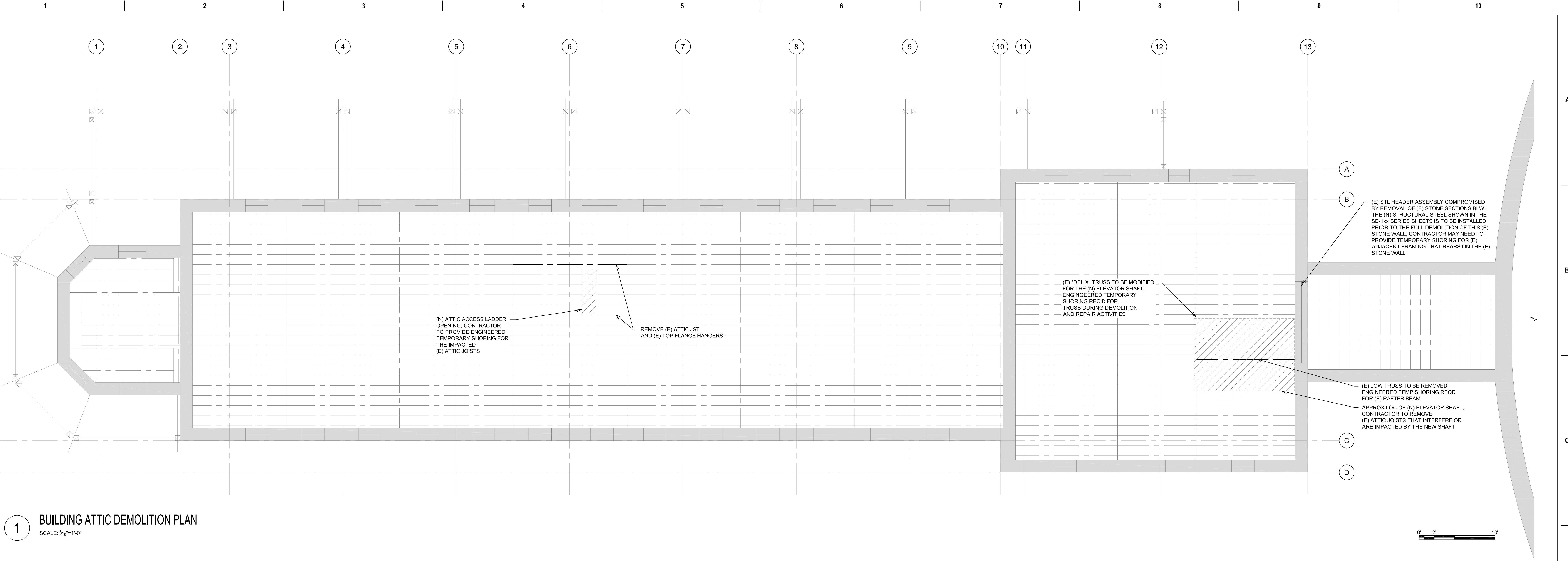
- SEE SHEET SE-001 FOR STRUCTURAL NOTES.
- VERIFY ALL DIMENSIONS, ELEVATIONS, AND EXISTING CONDITIONS WITH ARCHITECTURAL DRAWINGS BEFORE CONSTRUCTION COMMENCES.
- ELEVATIONS ON THE STRUCTURAL DRAWINGS REFER TO THE TOP OF THE MAIN (FIRST) FLOOR CONCRETE REFERENCE ELEVATION SET AT 100'-0".
- CONTRACTOR IS TO SAWCUT EXISTING STONE WALLS AS PART OF THE DEMOLITION SHOWN. THESE SAWCUTS ARE TO PENETRATE THE FULL WALL THICKNESS PRIOR TO REMOVAL OF EXISTING STONE SECTIONS.
- PRIOR TO DEMOLITION, CONTRACTOR IS TO SUBMIT A DELEGATED DESIGN FOR TEMPORARY SHORING AT THE DIFFERENT AREAS. THE ENGINEER OF RECORD FOR THE TEMPORARY SHORING IS TO HOLD A VALID SOUTH DAKOTA ENGINEERING LICENSE.

VA FORM 08-6231									
1	2	3	4	5	6	7	8	9	10

three inches = one foot
one and one half inches = one foot
one inch = one foot
three quarters inch = one foot
one half inch = one foot
three eighths inch = one foot
one quarter inch = one foot
one eighth inch = one foot

10/25/2021 10:30:50 AM

P:\2021\2021-2027\A-CAD Drawings\Arch\211921 DOM B8_A20.rvt
VA FORM 08-6231



SHEET NOTES			
BUILDING ATTIC DEMOLITION PLAN NOTES			
<ul style="list-style-type: none">SEE SHEET SE-001 FOR STRUCTURAL NOTES.VERIFY ALL DIMENSIONS, ELEVATIONS, AND EXISTING CONDITIONS WITH ARCHITECTURAL DRAWINGS BEFORE CONSTRUCTION COMMENCES.ELEVATIONS ON THE STRUCTURAL DRAWINGS REFER TO THE TOP OF THE MAIN (FIRST) FLOOR CONCRETE REFERENCE ELEVATION SET AT 100'-0".CONTRACTOR IS TO SAWCUT EXISTING STONE WALLS AS PART OF THE DEMOLITION SHOWN. THESE SAWCUTS ARE TO PENETRATE THE FULL WALL THICKNESS PRIOR TO REMOVAL OF EXISTING STONE SECTIONS.PRIOR TO DEMOLITION, CONTRACTOR IS TO SUBMIT A DELEGATED DESIGN FOR TEMPORARY SHORING AT THE DIFFERENT AREAS. THE ENGINEER OF RECORD FOR THE TEMPORARY SHORING IS TO HOLD A VALID SOUTH DAKOTA ENGINEERING LICENSE.			
Project Title		Project Number	
DOM RENOVATION FOR SEMIPRIVATE ROOMS		VA #568A4-21-208 SGA 211921	
Location		Drawing Number	
HOT SPRINGS, SOUTH DAKOTA		8	
Issue Date	Checked	Drawn	
06/03/2025	MDA	SJK	
Phase		Drawing Number	
BID DOCUMENTS		SD-104	
Fully Sprinklered			

ISSUE #	DESCRIPTION	DATE
1	BID DOCUMENTS	06/03/2025

CONSULTANTS	
STRUCTURAL: ALBERTSON ENGINEERING, INC. 3202 W. MAIN ST., #C RAPID CITY, SD 57702 605-343-9606 STEPHEN KILBER	MEP: WEST PLAINS ENGINEERING, INC. 1750 RAND ROAD RAPID CITY, SD 57702 605-348-7455 MIKE SIGMAN (ELEC) MICHAEL HEINRICH (MECH)

DESIGNER OF RECORD	STAMP
A/E: STONE GROUP ARCHITECTS 600 EAST 7TH ST SIOUX FALLS, SD 57103 605-271-1144 TODD STONE	13396 STEPHEN J. KILBER ARCHITECT SOUTH DAKOTA

Office of Construction and Facilities Management VA U.S. Department of Veterans Affairs
--

Drawing Title BUILDING ATTIC DEMOLITION PLAN
Approved: DOUG SPRINKLE

Phase BID DOCUMENTS
FULLY SPRINKLERED

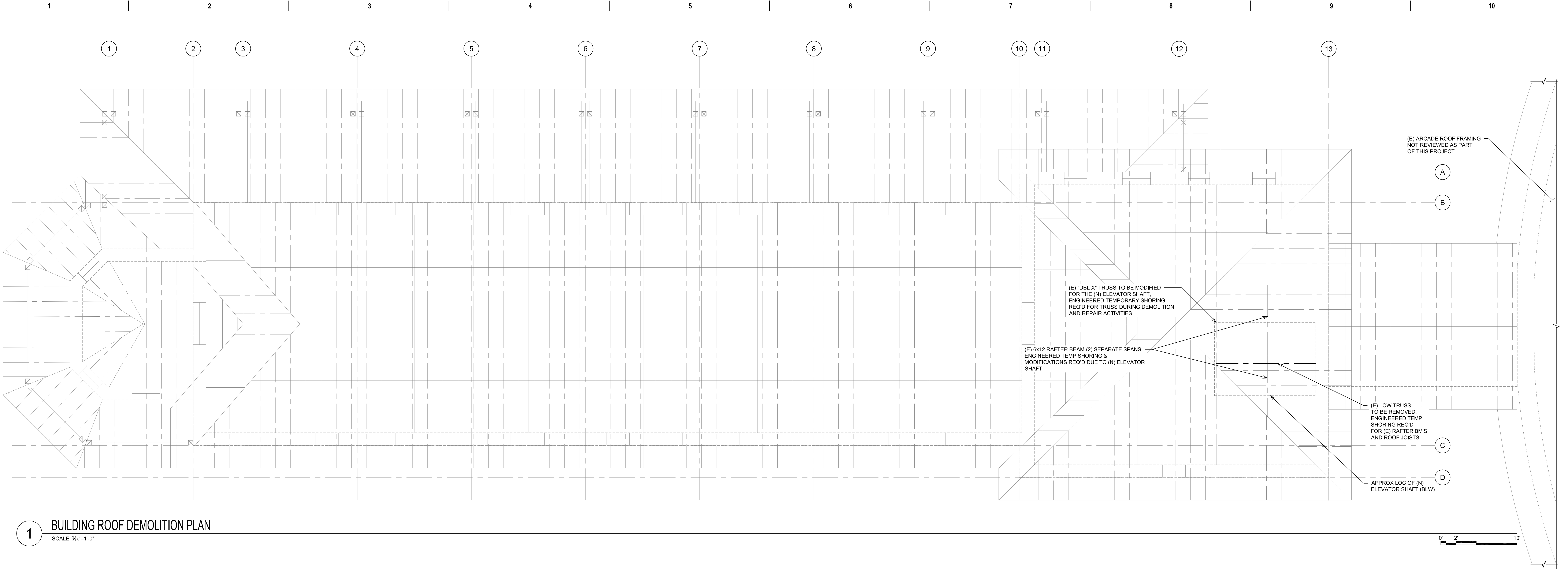
Project Title DOM RENOVATION FOR SEMIPRIVATE ROOMS
Location HOT SPRINGS, SOUTH DAKOTA
Issue Date 06/03/2025
Checked MDA
Drawn SJK

Project Number VA #568A4-21-208 SGA 211921
Building Number 8
Drawing Number SD-104

three inches = one foot
one and one half inches = one foot
one inch = one foot
three quarters inch = one foot
one half inch = one foot
three eighths inch = one foot
one quarter inch = one foot
one eighth inch = one foot

10/25/2021 10:30:50 AM

P:\2021\2021-2027\A-CAD Drawings\Arch\211921 DOM B8_A20.rvt
VA FORM 08-6231

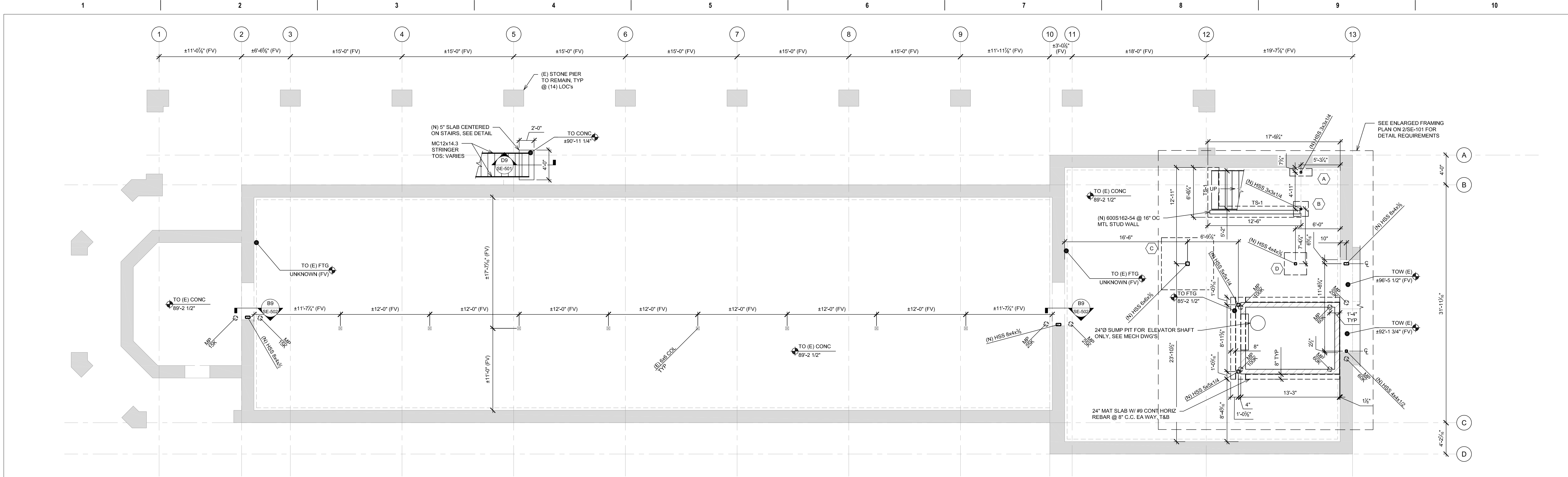


1 BUILDING ROOF DEMOLITION PLAN
SCALE: 3/8"=1'-0"

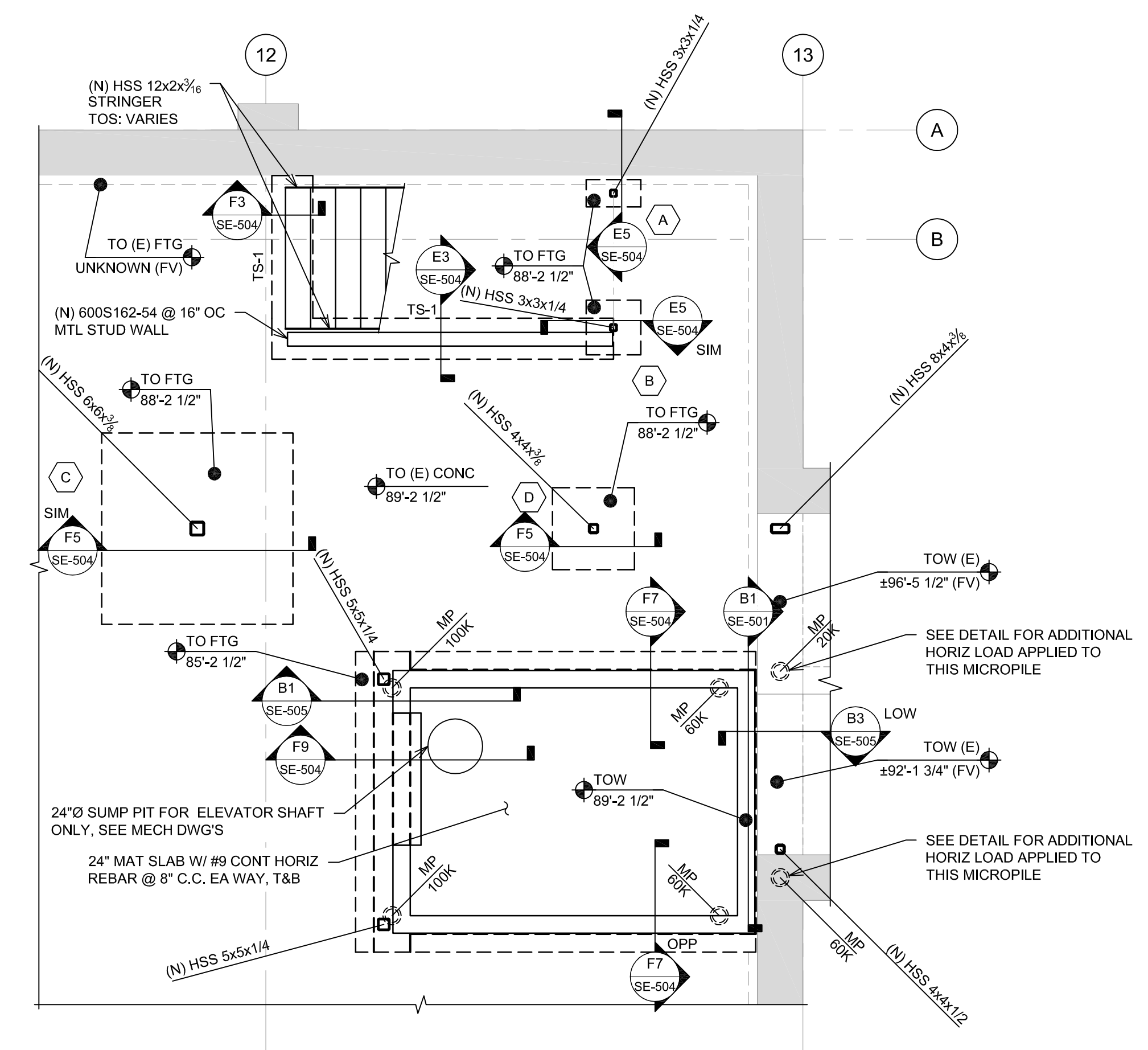
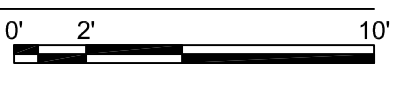
- ### SHEET NOTES
- BUILDING ROOF DEMOLITION PLAN NOTES**
- SEE SHEET SE-001 FOR STRUCTURAL NOTES.
 - VERIFY ALL DIMENSIONS, ELEVATIONS, AND EXISTING CONDITIONS WITH ARCHITECTURAL DRAWINGS BEFORE CONSTRUCTION COMMENCES.
 - ELEVATIONS ON THE STRUCTURAL DRAWINGS REFER TO THE TOP OF THE MAIN (FIRST) FLOOR CONCRETE REFERENCE ELEVATION SET AT 100'-0".
 - CONTRACTOR IS TO SAWCUT EXISTING STONE WALLS AS PART OF THE DEMOLITION SHOWN. THESE SAWCUTS ARE TO PENETRATE THE FULL WALL THICKNESS PRIOR TO REMOVAL OF EXISTING STONE SECTIONS.
 - PRIOR TO DEMOLITION, CONTRACTOR IS TO SUBMIT A DELEGATED DESIGN FOR TEMPORARY SHORING AT THE DIFFERENT AREAS. THE ENGINEER OF RECORD FOR THE TEMPORARY SHORING IS TO HOLD A VALID SOUTH DAKOTA ENGINEERING LICENSE.

																																																																																																																																																																																																																																																																																																																																																																																																																																																																																																																																																																																																																																																																																																																																																																																																																																																																																																																																																																																																																																																																																																																																																																																																																																																																																																																																																																																																																																																								</
--	--	--	--	--	--	--	--	--	--	--	--	--	--	--	--	--	--	--	--	--	--	--	--	--	--	--	--	--	--	--	--	--	--	--	--	--	--	--	--	--	--	--	--	--	--	--	--	--	--	--	--	--	--	--	--	--	--	--	--	--	--	--	--	--	--	--	--	--	--	--	--	--	--	--	--	--	--	--	--	--	--	--	--	--	--	--	--	--	--	--	--	--	--	--	--	--	--	--	--	--	--	--	--	--	--	--	--	--	--	--	--	--	--	--	--	--	--	--	--	--	--	--	--	--	--	--	--	--	--	--	--	--	--	--	--	--	--	--	--	--	--	--	--	--	--	--	--	--	--	--	--	--	--	--	--	--	--	--	--	--	--	--	--	--	--	--	--	--	--	--	--	--	--	--	--	--	--	--	--	--	--	--	--	--	--	--	--	--	--	--	--	--	--	--	--	--	--	--	--	--	--	--	--	--	--	--	--	--	--	--	--	--	--	--	--	--	--	--	--	--	--	--	--	--	--	--	--	--	--	--	--	--	--	--	--	--	--	--	--	--	--	--	--	--	--	--	--	--	--	--	--	--	--	--	--	--	--	--	--	--	--	--	--	--	--	--	--	--	--	--	--	--	--	--	--	--	--	--	--	--	--	--	--	--	--	--	--	--	--	--	--	--	--	--	--	--	--	--	--	--	--	--	--	--	--	--	--	--	--	--	--	--	--	--	--	--	--	--	--	--	--	--	--	--	--	--	--	--	--	--	--	--	--	--	--	--	--	--	--	--	--	--	--	--	--	--	--	--	--	--	--	--	--	--	--	--	--	--	--	--	--	--	--	--	--	--	--	--	--	--	--	--	--	--	--	--	--	--	--	--	--	--	--	--	--	--	--	--	--	--	--	--	--	--	--	--	--	--	--	--	--	--	--	--	--	--	--	--	--	--	--	--	--	--	--	--	--	--	--	--	--	--	--	--	--	--	--	--	--	--	--	--	--	--	--	--	--	--	--	--	--	--	--	--	--	--	--	--	--	--	--	--	--	--	--	--	--	--	--	--	--	--	--	--	--	--	--	--	--	--	--	--	--	--	--	--	--	--	--	--	--	--	--	--	--	--	--	--	--	--	--	--	--	--	--	--	--	--	--	--	--	--	--	--	--	--	--	--	--	--	--	--	--	--	--	--	--	--	--	--	--	--	--	--	--	--	--	--	--	--	--	--	--	--	--	--	--	--	--	--	--	--	--	--	--	--	--	--	--	--	--	--	--	--	--	--	--	--	--	--	--	--	--	--	--	--	--	--	--	--	--	--	--	--	--	--	--	--	--	--	--	--	--	--	--	--	--	--	--	--	--	--	--	--	--	--	--	--	--	--	--	--	--	--	--	--	--	--	--	--	--	--	--	--	--	--	--	--	--	--	--	--	--	--	--	--	--	--	--	--	--	--	--	--	--	--	--	--	--	--	--	--	--	--	--	--	--	--	--	--	--	--	--	--	--	--	--	--	--	--	--	--	--	--	--	--	--	--	--	--	--	--	--	--	--	--	--	--	--	--	--	--	--	--	--	--	--	--	--	--	--	--	--	--	--	--	--	--	--	--	--	--	--	--	--	--	--	--	--	--	--	--	--	--	--	--	--	--	--	--	--	--	--	--	--	--	--	--	--	--	--	--	--	--	--	--	--	--	--	--	--	--	--	--	--	--	--	--	--	--	--	--	--	--	--	--	--	--	--	--	--	--	--	--	--	--	--	--	--	--	--	--	--	--	--	--	--	--	--	--	--	--	--	--	--	--	--	--	--	--	--	--	--	--	--	--	--	--	--	--	--	--	--	--	--	--	--	--	--	--	--	--	--	--	--	--	--	--	--	--	--	--	--	--	--	--	--	--	--	--	--	--	--	--	--	--	--	--	--	--	--	--	--	--	--	--	--	--	--	--	--	--	--	--	--	--	--	--	--	--	--	--	--	--	--	--	--	--	--	--	--	--	--	--	--	--	--	--	--	--	--	--	--	--	--	--	--	--	--	--	--	--	--	--	--	--	--	--	--	--	--	--	--	--	--	--	--	--	--	--	--	--	--	--	--	--	--	--	--	--	--	--	--	--	--	--	--	--	--	--	--	--	--	--	--	--	--	--	--	--	--	--	--	--	--	--	--	--	--	--	--	--	--	--	--	--	--	--	--	--	--	--	--	--	--	--	--	--	--	--	--	--	--	--	--	--	--	--	--	--	--	--	--	--	--	--	--	--	--	--	--	--	--	--	--	--	--	--	--	--	--	--	--	--	--	--	--	--	--	--	--	--	--	--	--	--	--	--	--	--	--	--	--	--	--	--	--	--	--	--	--	--	--	--	--	--	--	--	--	--	--	--	--	--	--	--	--	--	--	--	--	--	--	--	--	--	--	--	--	--	--	--	--	--	--	--	--	--	--	--	--	--	--	--	--	--	--	--	--	--	--	--	--	--	--	--	--	--	--	--	--	--	--	--	--	--	--	--	--	--	--	--	--	--	--	--	--	--	--	--	--	--	--	--	--	--	--	--	--	--	--	--	--	--	--	--	--	--	--	--	--	--	--	--	--	--	--	--	--	--	--	--	--	--	--	--	--	--	--	--	--	--	--	--	--	--	--	--	--	--	--	--	--	--	--	--	--	--	--	--	--	--	--	--	--	--	--	--	--	--	--	--	--	--	--	--	--	--	--	--	--	--	--	--	--	--	--	--	--	--	--	--	--	--	--	--	--	--	--	--	--	--	--	--	--	--	--	--	--	--	--	--	--	--	--	--	--	--	--	--	--	--	--	--	--	--	--	--	--	--	--	--	--	--	--	--	--	--	--	--	--	--	--	--	--	--	--	--	--	--	--	--	--	--	--	--	--	--	--	--	--	--	--	--	--	--	--	--	--	--	--	--	--	--	--	--	--	--	--	--	--	--	--	--	--	--	--	--	--	--	--	--	--	--	--	--	--	--	--	--	--	--	--	--	--	--	--	--	--	--	--	--	--	--	--	--	--	--	--	--	--	--	--	--	--	--	--	--	--	--	--	--	--	--	--	--	--	--	--	--	--	--	--	--	--	--	--	--	--	--	--	--	--	--	--	--	--	--	--	--	--	--	--	--	--	--	--	--	--	--	--	--	--	--	--	--	--	--	--	--	--	--	--	--	--	--	--	--	--	----

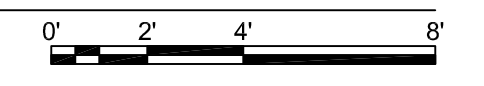
three inches = one foot
one and one half inches = one foot
one inch = one foot
three quarters inch = one foot
one half inch = one foot
three eighths inch = one foot
one quarter inch = one foot
one eighth inch = one foot



1 BUILDING BASEMENT FOUNDATION PLAN
SCALE: 3/16"=1'-0"



2 PARTIAL BASEMENT FOUNDATION PLAN
SCALE: 1/2"=1'-0"



- ### SHEET NOTES
- BUILDING BASEMENT FOUNDATION PLAN NOTES**
- SEE SHEET SE-001 FOR STRUCTURAL NOTES.
 - VERIFY ALL DIMENSIONS, ELEVATIONS, AND EXISTING CONDITIONS WITH ARCHITECTURAL DRAWINGS BEFORE CONSTRUCTION COMMENCES.
 - ELEVATIONS ON THE STRUCTURAL DRAWINGS REFER TO THE TOP OF THE MAIN (FIRST) FLOOR CONCRETE REFERENCE ELEVATION SET AT 100'-0".
 - INDICATES 8" CMU WALL GROUT SOLID - SEE PLAN AND REINFORCE WITH (1) #5 VERTICAL REBAR @ 48" C.C. (MAX) CENTERED IN GROUT FILLED REBAR AT THE EDGES OF ALL OPENINGS AND WALL IN GROUT FILLED CELLS. IN ADDITION, PROVIDE THE FOLLOWING HORIZONTAL REINFORCEMENT:
 - CONT 8" BOND BEAM W/ (2) #5 HORIZ REBAR @ 6'-0" C.C. (MAX)
 - 9 GAUGE DUROWALL @ 16" C.C.
 - DENOTES LOCATION OF MICROPILE. DESIGN OF MICROPILE AND ITS CONNECTION TO THE NEW MAT SLAB OR EXISTING CONCRETE FOOTINGS SHALL BE BY SPECIALTY ENGINEER. THE DELEGATED ANALYSIS SHALL ALSO ADDRESS PUNCHING SHEAR CAPACITY (WHERE APPLICABLE). LOADS GIVEN ARE SERVICE LOADS IN KIPS.
 - SEE FOOTING SCHEDULE ON SHEET SE-601 FOR FOOTING SIZE AND REINFORCEMENT REQUIREMENTS.

ISSUE #	BID DOCUMENTS	DATE
1	BID DOCUMENTS	06/03/2025

CONSULTANTS

STRUCTURAL:
ALBERTSON ENGINEERING, INC.
3202 W. MAIN ST., #C
RAPID CITY, SD 57702
605-343-9606
STEPHEN KILBER

MEP:
WEST PLAINS ENGINEERING, INC.
1750 RAND ROAD
RAPID CITY, SD 57702
605-348-7455
MIKE SIGMAN (ELEC)
MICHAEL HEINRICH (MECH)

DESIGNER OF RECORD

A/E:
STONE GROUP ARCHITECTS
600 EAST 7TH ST
SIOUX FALLS, SD 57103
605-271-1144
TODD STONE

STAMP

Office of Construction and Facilities Management

U.S. Department of Veterans Affairs

Drawing Title
BUILDING BASEMENT FOUNDATION PLAN

Approved:
DOUG SPRINKLE

Phase
BID DOCUMENTS

FULLY SPRINKLERED

Project Title
DOM RENOVATION FOR SEMIPRIVATE ROOMS

Location
HOT SPRINGS, SOUTH DAKOTA

Issue Date
06/03/2025

Checked
MDA

Drawn
SJK

Project Number
VA #568A4-21-208
SGA 211921

Building Number
8

Drawing Number
SE-101