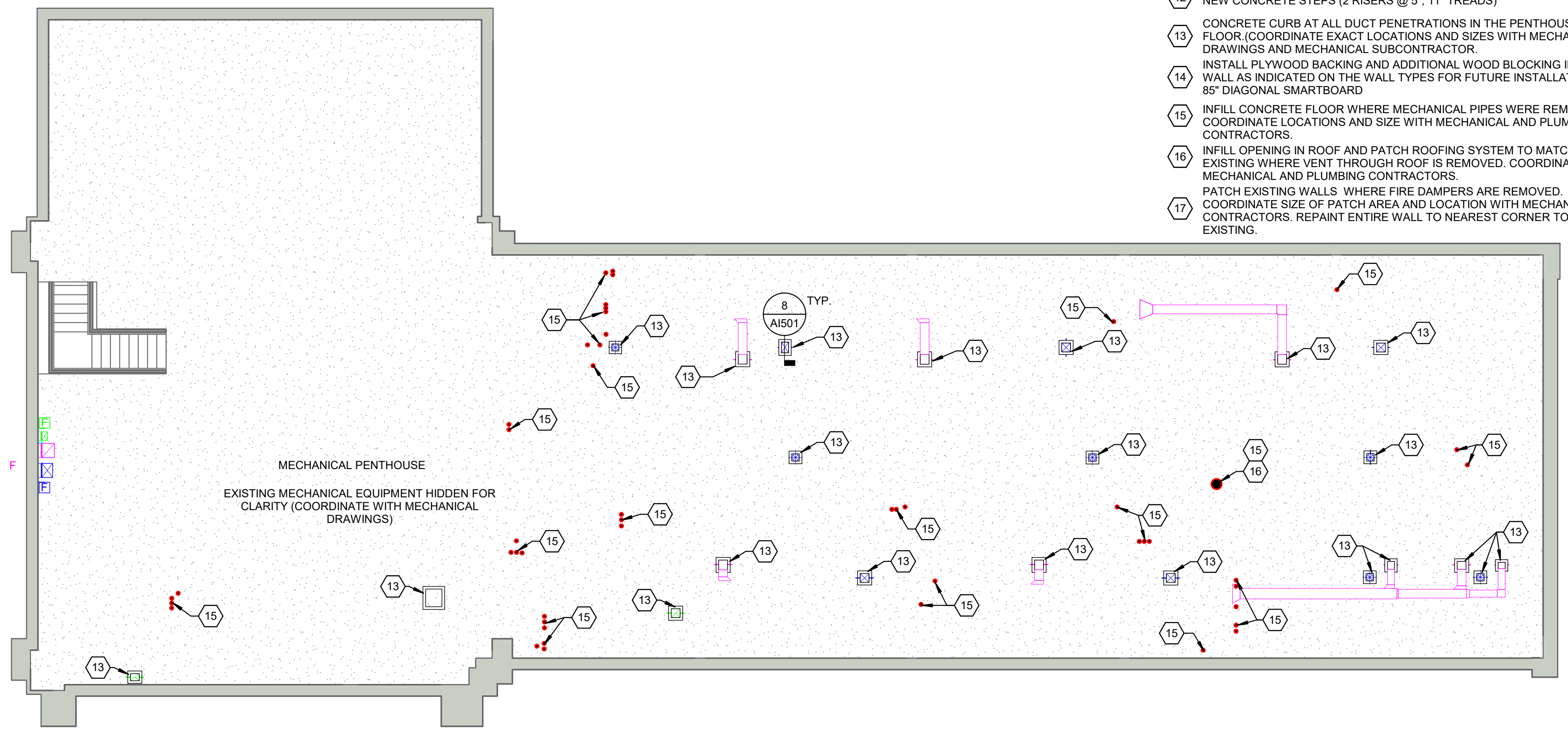


PARTIAL ROOF PLAN

SCALE: 1/8" = 1'-0"

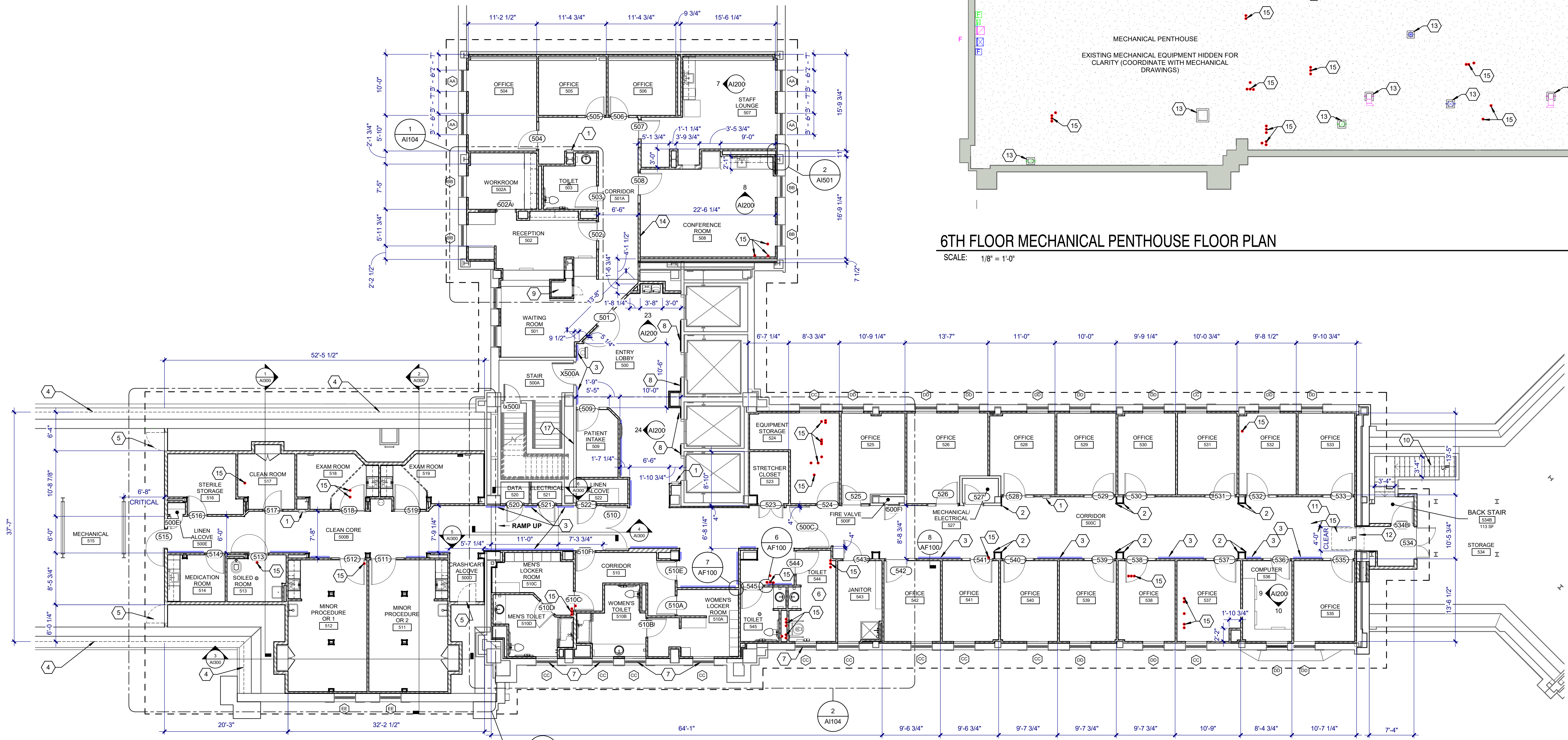


6TH FLOOR MECHANICAL PENTHOUSE FLOOR PLAN

SCALE: 1/8" = 1'-0"

KEYNOTES:

- 1 SEMI-RECESSED FIRE EXTINGUISHER CABINET
- 2 RESILIENT CORNER GUARD
- 3 HANDRAIL
- 4 EXTERIOR WALL BELOW ROOF STRUCTURE
- 5 36" x 36" ACCESS PANEL (COORDINATE RATING WITH ASSOCIATED WALL TYPE)
- 6 ALL BLOCKING AND BACKING IN THIS ROOM SHALL SUPPORT UP TO 800 LBS.
- 7 REPLACE GLAZING IN THIS WINDOW WITH NEW FROSTED OBSCURED GLAZING (SEE WINDOW TYPES ON A103) FOR SIZE
- 8 EXTEND ELEVATOR CONTROLS BOX TO ACCOUNT FOR NEW WALL FINISHES
- 9 EXISTING LAUNDRY CHUTE
- 10 VINYL TREADS (13) AND RISERS (14) INSTALLED ON EXISTING METAL TREADS
- 11 REMOVABLE RAMP
- 12 NEW CONCRETE STEPS (2 RISERS @ 5", 11" TREADS)
- 13 CONCRETE CURB AT ALL DUCT PENETRATIONS IN THE PENTHOUSE FLOOR (COORDINATE EXACT LOCATIONS AND SIZES WITH MECHANICAL DRAWINGS AND MECHANICAL SUBCONTRACTOR)
- 14 INSTALL PLYWOOD BACKING AND ADDITIONAL WOOD BLOCKING IN THIS WALL AS INDICATED ON THE WALL TYPES FOR FUTURE INSTALLATION OF 85° DIAGONAL SMARTBOARD
- 15 INFILL CONCRETE FLOOR WHERE MECHANICAL PIPES WERE REMOVED. COORDINATE LOCATIONS AND SIZE WITH MECHANICAL AND PLUMBING CONTRACTORS
- 16 INFILL OPENING IN ROOF AND PATCH ROOFING SYSTEM TO MATCH EXISTING WHERE VENT THROUGH ROOF IS REMOVED. COORDINATE WITH MECHANICAL AND PLUMBING CONTRACTORS
- 17 PATCH EXISTING WALLS WHERE FIRE DAMPERS ARE REMOVED. COORDINATE SIZE OF PATCH AREA AND LOCATION WITH MECHANICAL CONTRACTORS. REPAINT ENTIRE WALL TO NEAREST CORNER TO MATCH EXISTING.



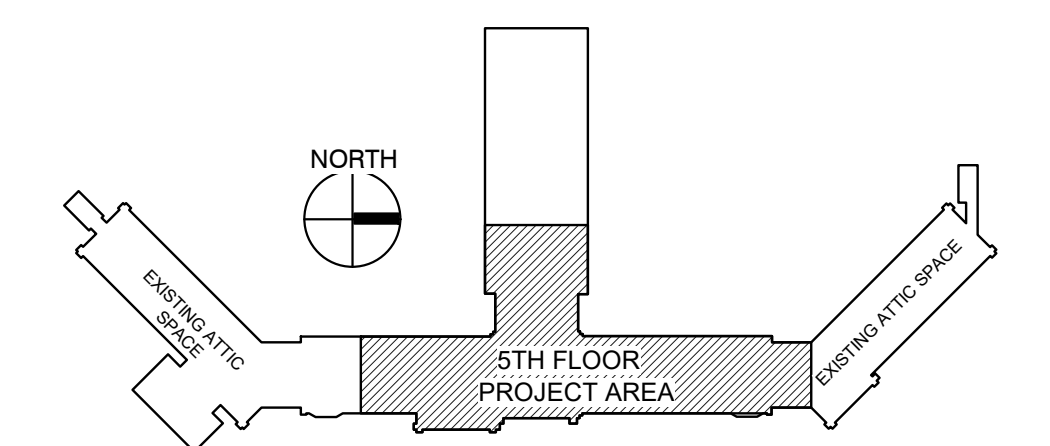
FLOOR PLAN

SCALE: 1/8" = 1'-0"

GENERAL NOTES:

- A. VERIFY ALL UTILITIES AND CONNECTION LOCATIONS.
- B. PROVIDE BLOCKING AND BACKING AS REQUIRED FOR EQUIPMENT AND ACCESSORIES.
- C. ALL SIGNAGE WILL BE FURNISHED BY OWNER AND INSTALLED BY CONTRACTOR. COORDINATE WITH OWNER.
- D. CONTRACTOR SHALL VERIFY ALL EXISTING CONDITIONS AND DIMENSIONS PRIOR TO BEGINNING CONSTRUCTION.
- E. ALL SURFACES OR FINISHES DAMAGED DURING CONSTRUCTION SHALL BE REPAIRED OR REPLACED AND SHALL MATCH ADJACENT MATERIALS.
- F. ALL WORK MUST BE COORDINATED CLOSELY WITH THE VA PROJECT ENGINEER TO NOT ADVERSELY AFFECT OPERATIONS OUTSIDE OF THE WORK AREA. TEMPORARY 1-HOUR FIRE RATED CONSTRUCTION PARTITIONS WILL BE REQUIRED WHEN THE WORK AREA EXTENDS INTO AND AFFECTS EXISTING AREAS AND OPERATIONS.
- G. REFER TO SHEET AF600 FOR FINISH MATERIALS SCHEDULE
- H. PATCH EXISTING WALLS TO REMAIN WHERE EXISTING PLUMBING AND MECHANICAL DUCTWORK ARE BEING REMOVED. COORDINATE LOCATIONS AND SIZE OF PATCH AREA WITH MECHANICAL AND PLUMBING CONTRACTORS. REPAINT ENTIRE WALL TO NEAREST CORNER TO MATCH EXISTING.

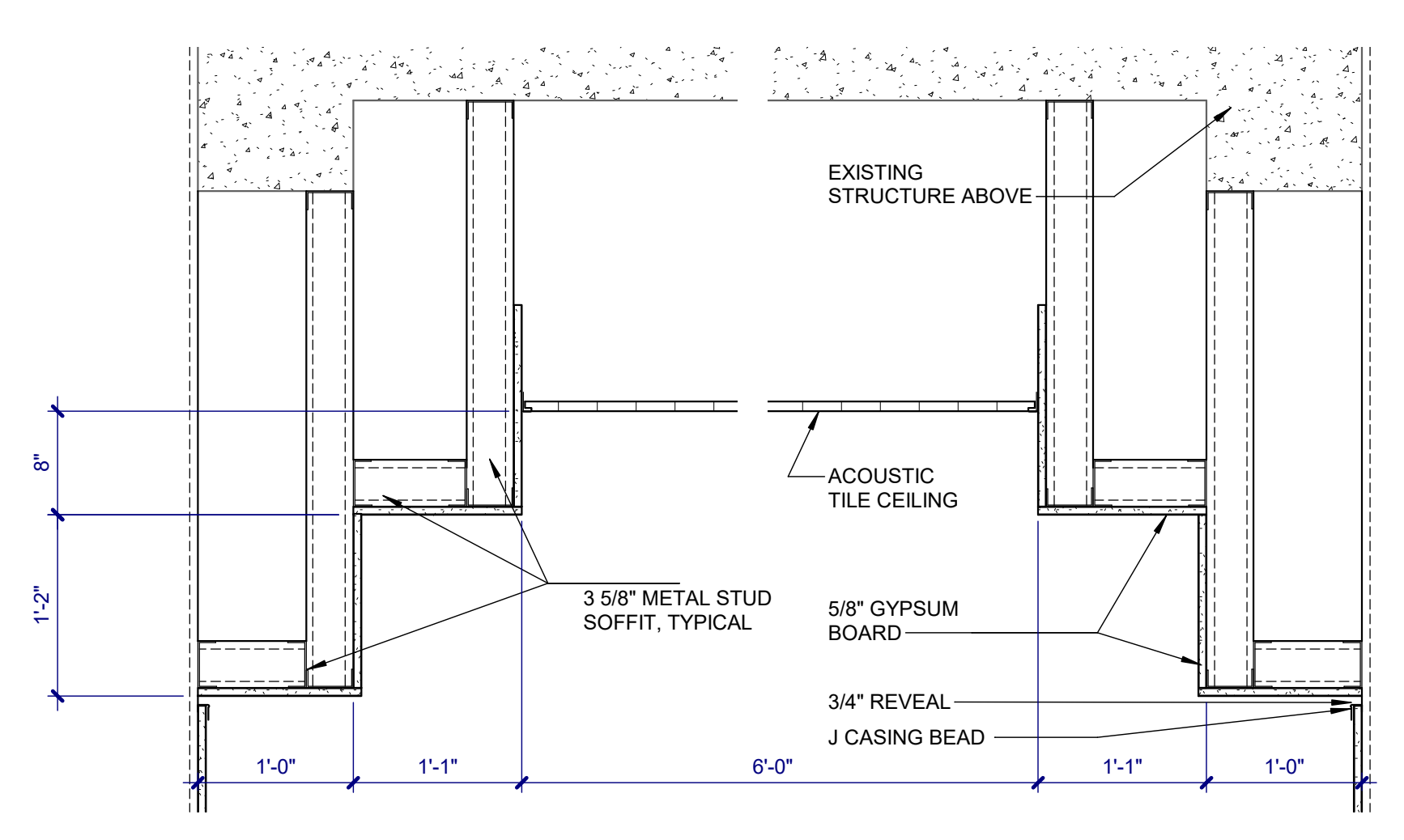
KEY PLAN:



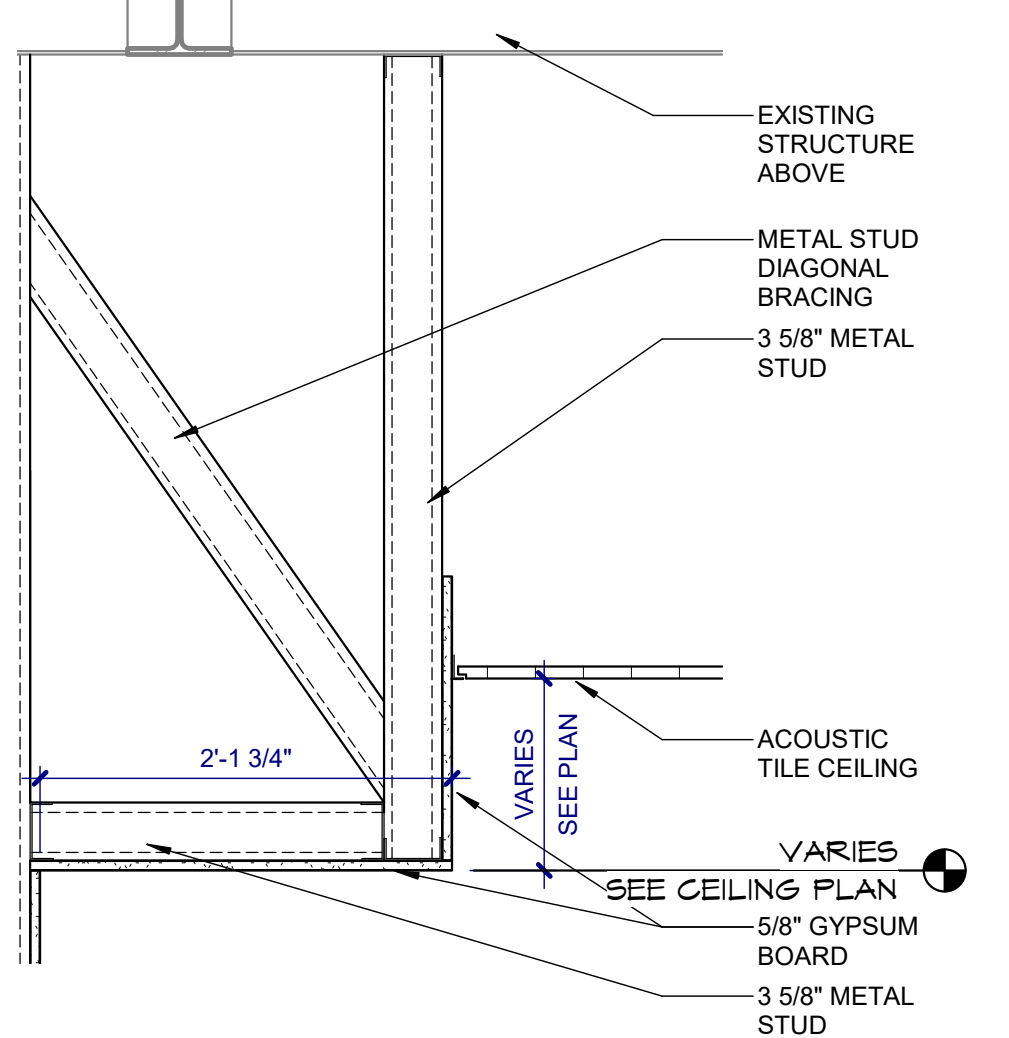
100% CONSTRUCTION DRAWINGS

CONSULTANTS: 4609 SOUTH TECHLINK CIRCLE • SIOUX FALLS, SD 57106 PHONE: (605) 362-3753 • FAX: (605) 362-3759 RAPID CITY, SD • SIOUX FALLS, SD • CASPER, WY • CEDAR RAPIDS, IA • BISMARK, ND		SEAL: 		ARCHITECT: 625 S. MINNESOTA AVENUE, SUITE 204 SIOUX FALLS, SOUTH DAKOTA 57104-4873 TELE: (605) 332-7850 FAX: (605) 332-3539		Drawing Title FIFTH FLOOR REMODEL PLAN Approved: Project Director		Project Title V.A. HEALTH CARE SYSTEM RENOVATE 5TH FLOOR SURGERY Project Number 438-15-201 Building Number 5 Drawing Number 5-A1102 Dwg. 9 of 60		Location SIOUX FALLS, SOUTH DAKOTA Date OCTOBER 11, 2017 Checked DGS Drawn AAD 		Office of Construction and Facilities Management	
--	--	------------------	--	---	--	--	--	--	--	---	--	--	--

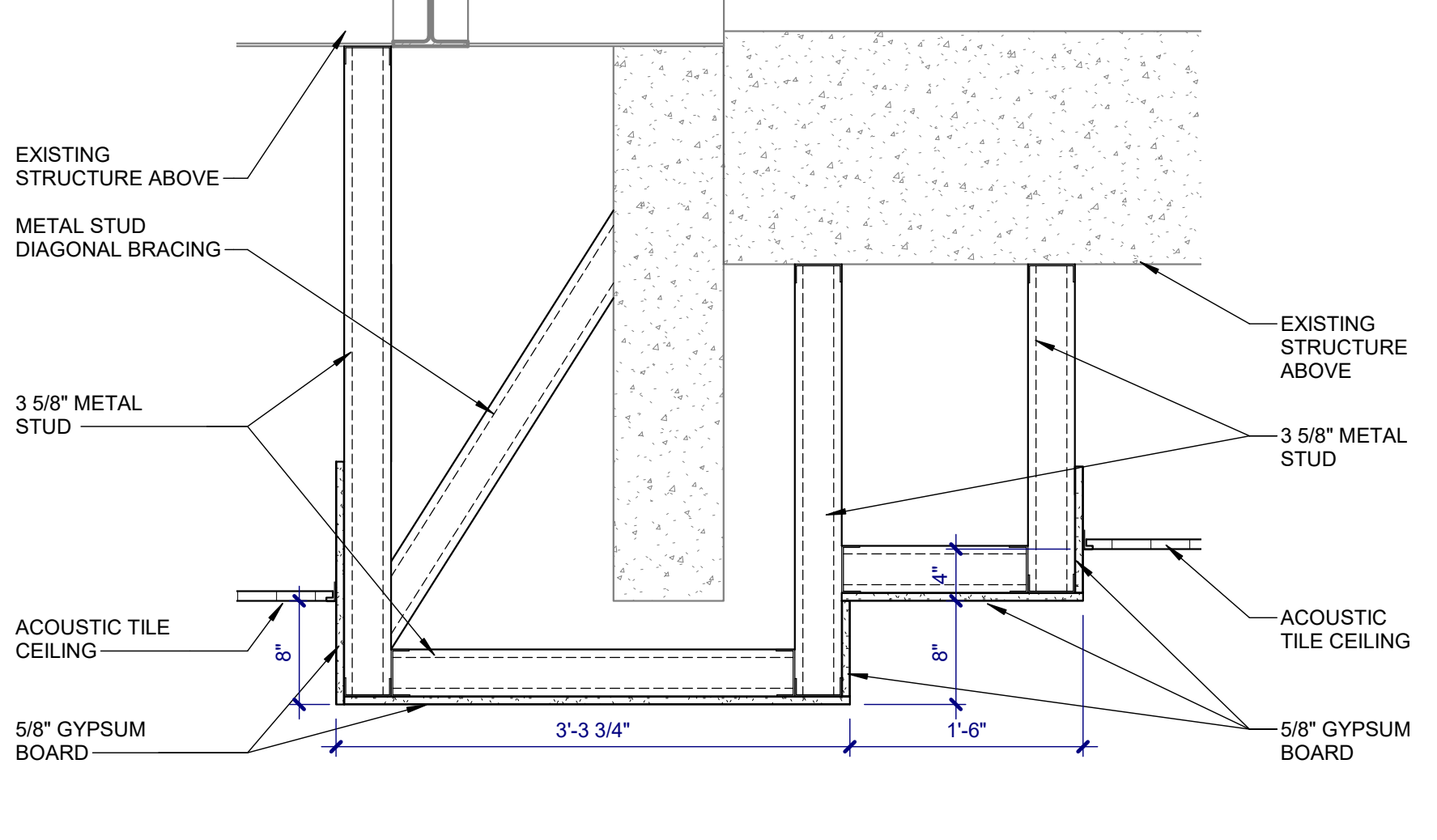
A
 three inches = one foot
 one and one half inches = one foot
 B
 one inch = one foot
 one and one half inches = one foot
 C
 one quarter inch = one foot
 one half inch = one foot
 D
 three quarters inch = one foot
 E
 one half inch = one foot
 F
 three eighths inch = one foot
 G
 one quarter inch = one foot
 H
 one eighth inch = one foot
 I
 one eighth inch = one foot
 J
 one eighth inch = one foot
 K
 one eighth inch = one foot
 L
 one eighth inch = one foot
 M
 one eighth inch = one foot
 N
 one eighth inch = one foot
 O
 one eighth inch = one foot
 P
 one eighth inch = one foot
 Q
 one eighth inch = one foot
 R
 one eighth inch = one foot
 S
 one eighth inch = one foot
 T
 one eighth inch = one foot
 U
 one eighth inch = one foot
 V
 one eighth inch = one foot
 W
 one eighth inch = one foot
 X
 one eighth inch = one foot
 Y
 one eighth inch = one foot
 Z
 one eighth inch = one foot



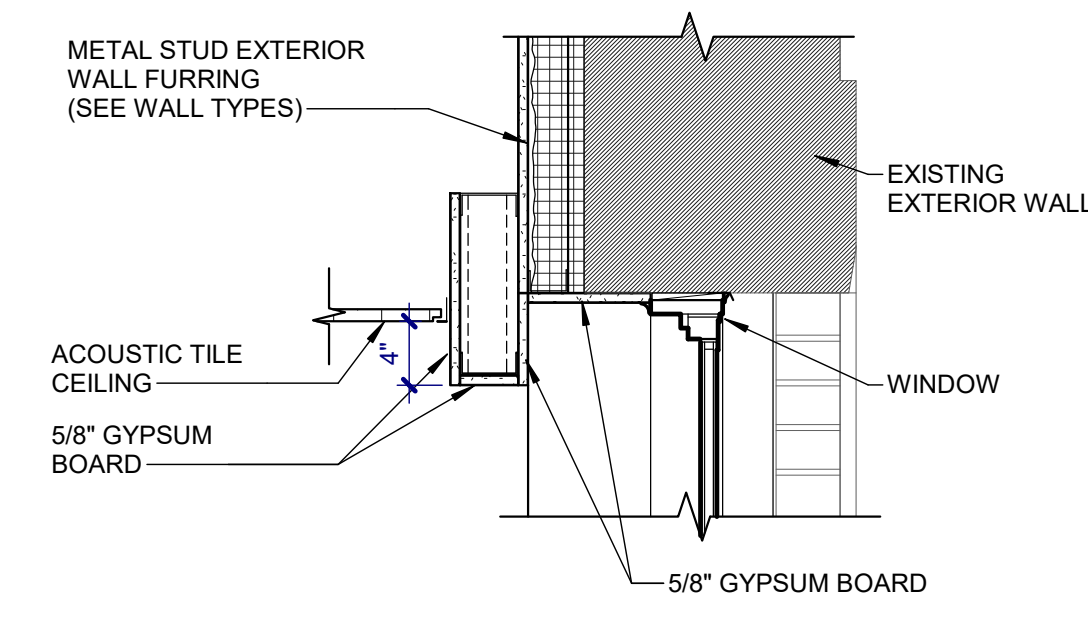
SOFFIT DETAIL
SCALE: 1" = 1'-0"



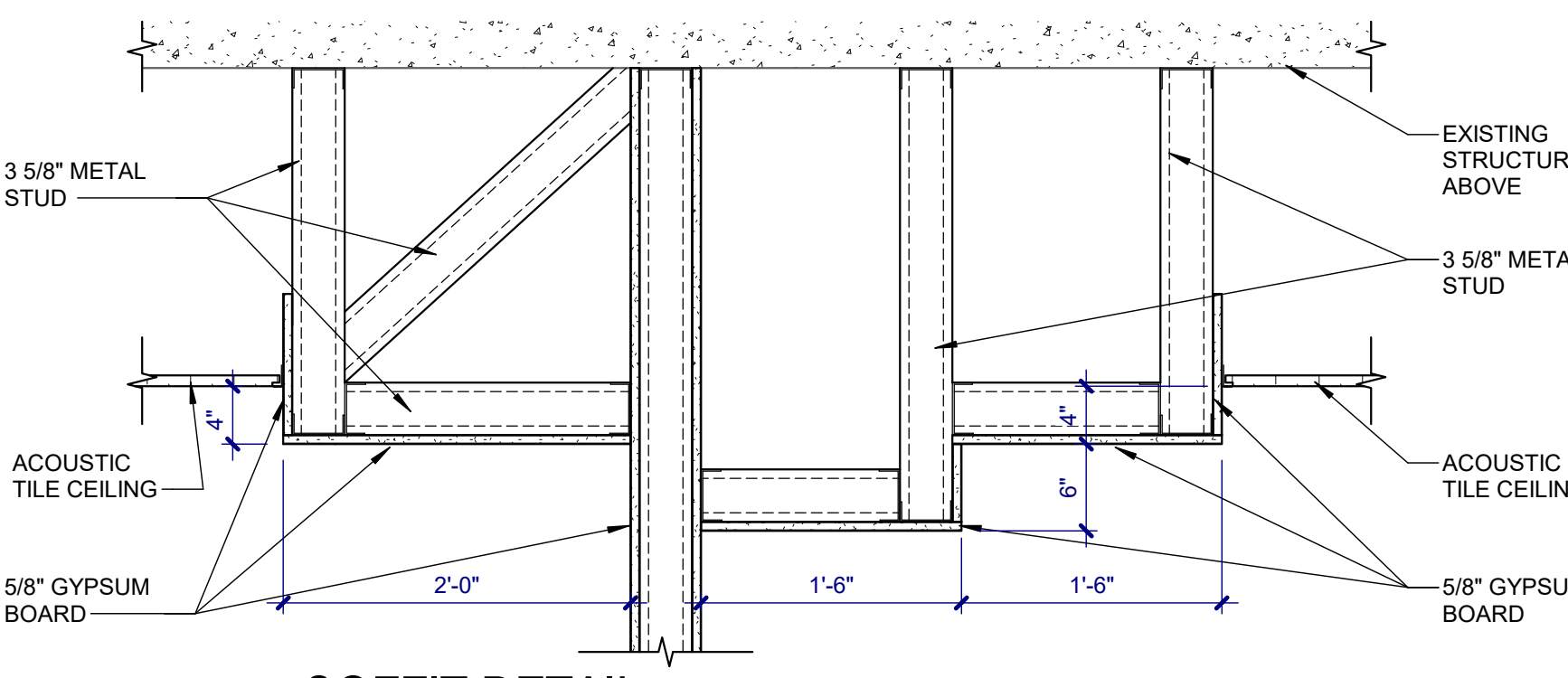
TYPICAL SOFFIT DETAIL
SCALE: 1" = 1'-0"



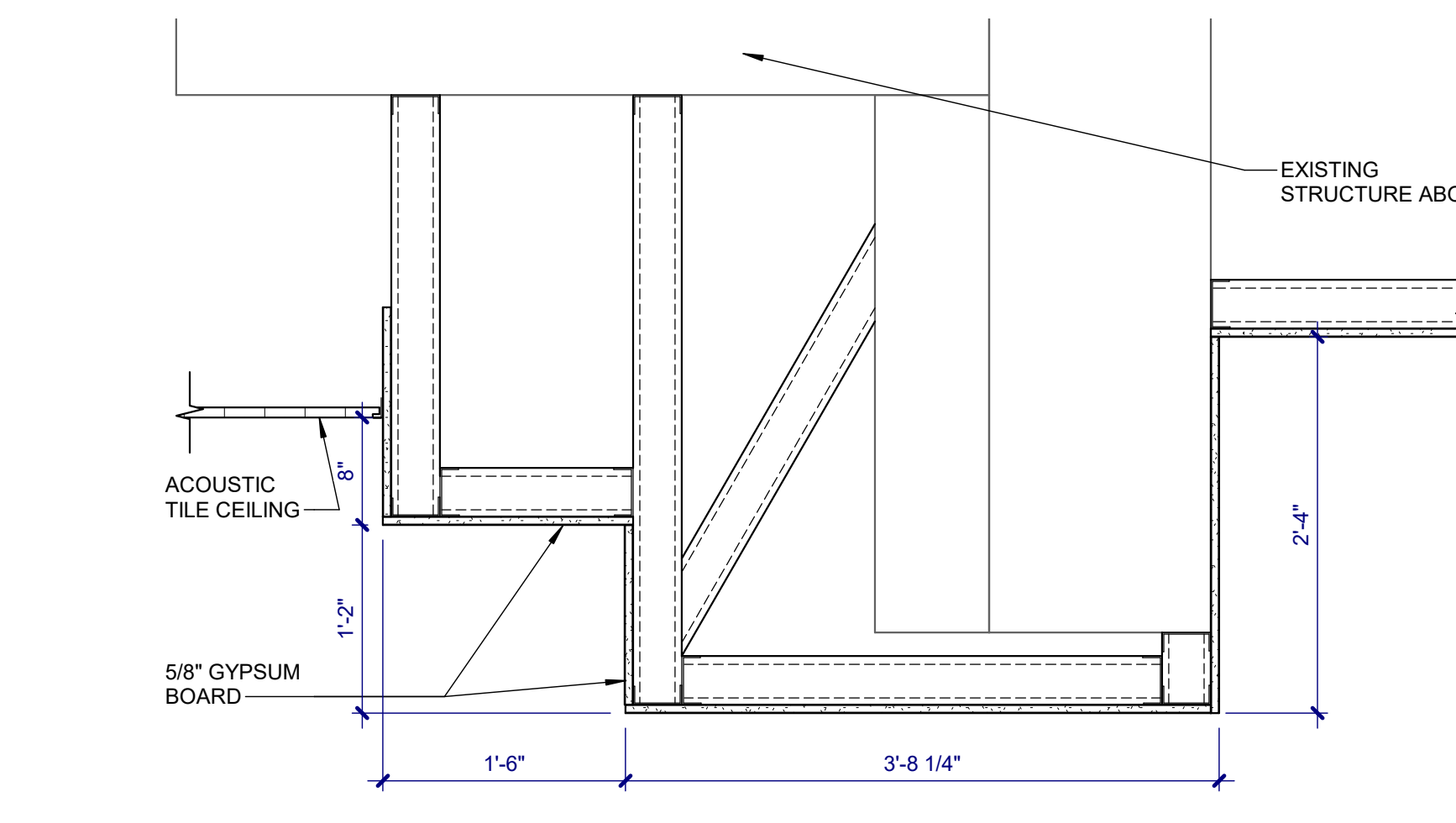
SOFFIT DETAIL
SCALE: 1" = 1'-0"



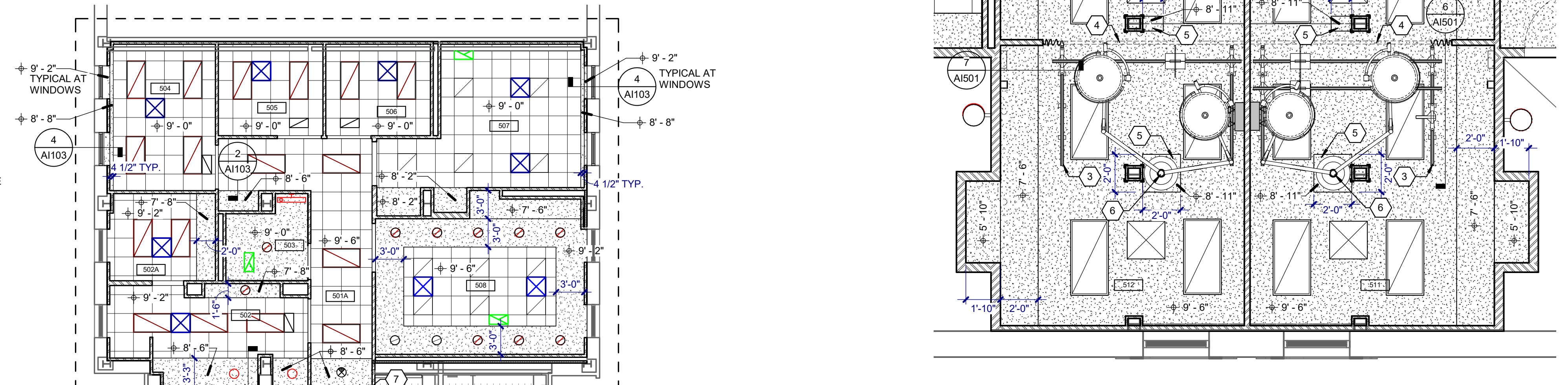
TYPICAL SOFFIT AT WINDOW
SCALE: 1" = 1'-0"



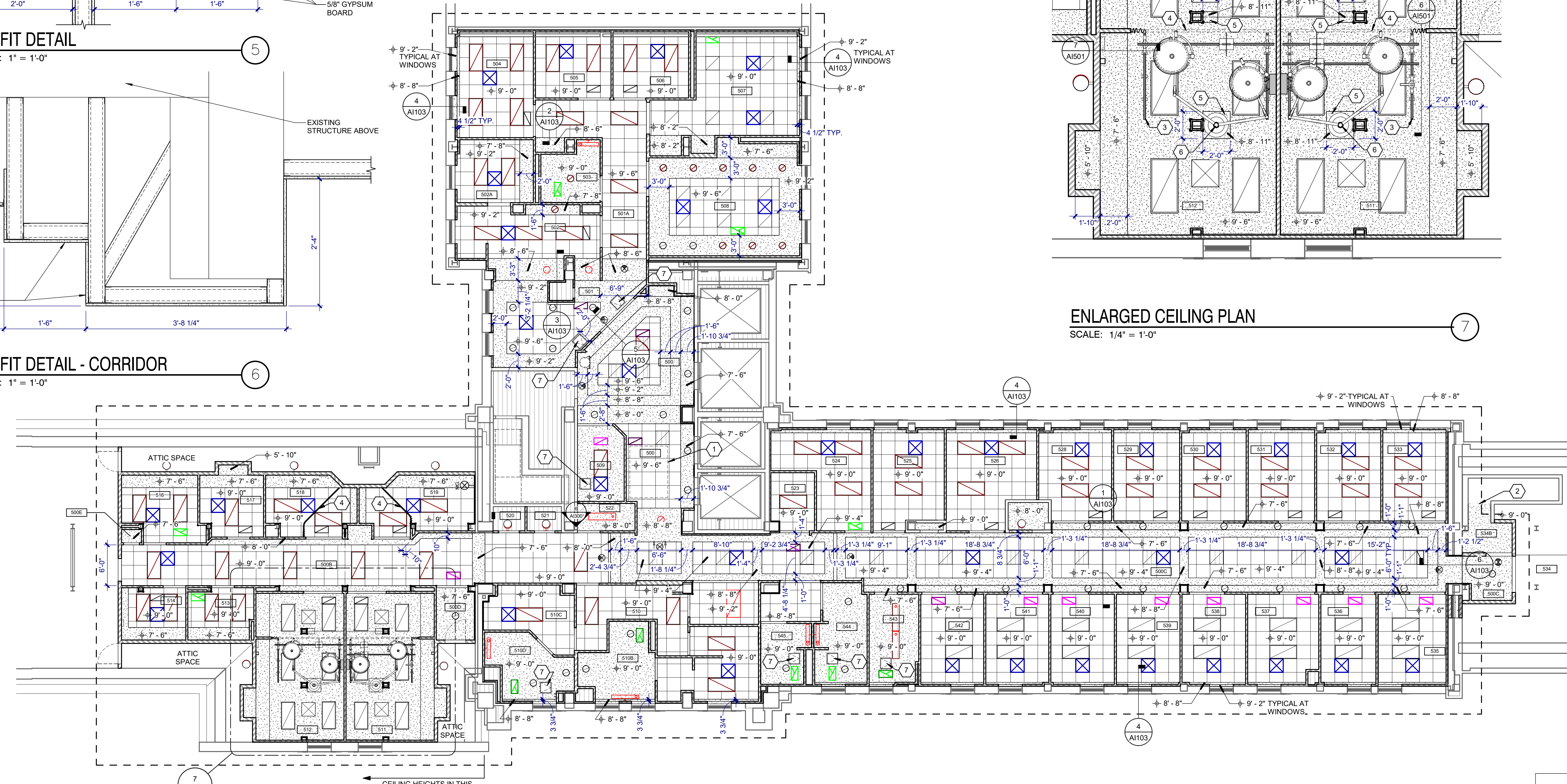
SOFFIT DETAIL
SCALE: 1" = 1'-0"



SOFFIT DETAIL - CORRIDOR
SCALE: 1" = 1'-0"



ENLARGED CEILING PLAN
SCALE: 1/4" = 1'-0"

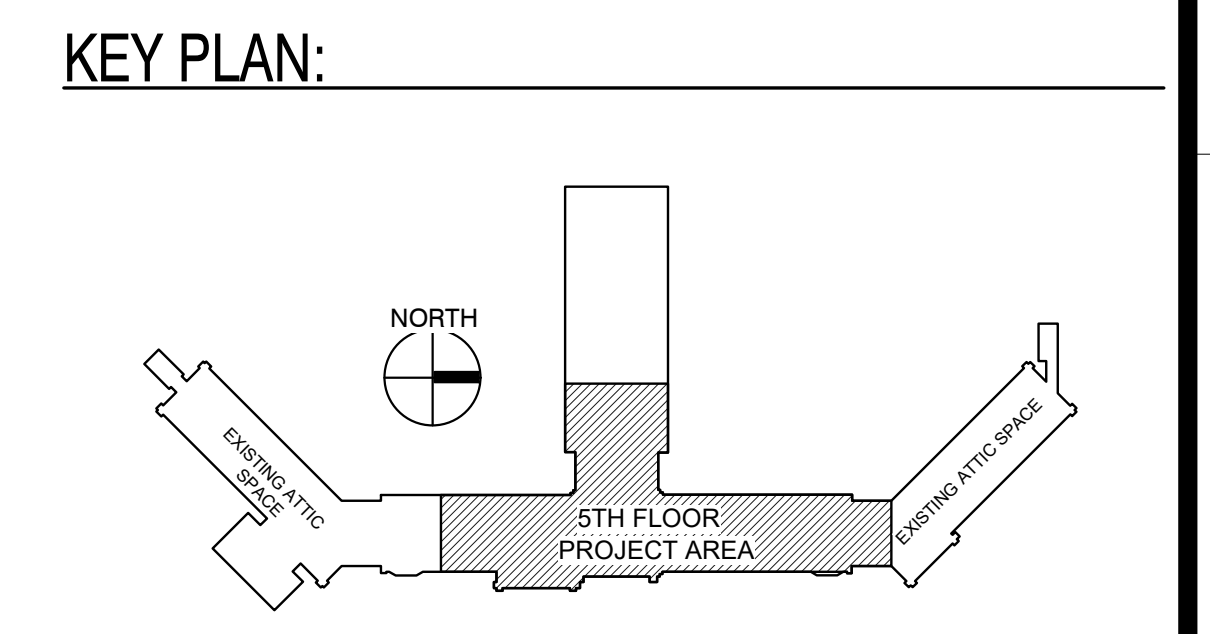


REFLECTED CEILING PLAN
SCALE: 1/8" = 1'-0"

- KEYNOTES:**
- 1 CEILING GRID AND TILES TO BE REMOVED IN THIS AREA TO ALLOW FOR CEILING ACCESS
 - 2 PATCH NEW GYPSUM BOARD CEILING INTO EXISTING CEILING IN THIS AREA AND REPAINT ENTIRE STAIR ENCLOSURE
 - 3 CEILING MOUNTED OVERHEAD PATIENT LIFT AND TRACK
 - 4 PRIVACY CURTAIN AND TRACK
 - 5 SOFFITS TO ENCLOSE STRUCTURAL BRACING MEMBERS
 - 6 OPERATING ROOM BOOM LIGHT SALVAGED FROM EXISTING OPERATING ROOMS
 - 7 18" X 18" CEILING MOUNTED ACCESS PANEL

- CEILING LEGEND**
- 2 x 2' SUSPENDED ACOUSTICAL CEILING GRID
 - GYPSUM BOARD CEILING / SOFFIT
 - DIFFUSER
 - RETURN
 - EXHAUST
 - 2x4 TROFFER LIGHT FIXTURE
 - 2x2 TROFFER LIGHT FIXTURE
 - DOWN LIGHT FIXTURE
 - SURFACE MOUNTED LIGHT FIXTURE
 - FIRE ALARM WITH VISUAL SIGNAL
 - FIRE ALARM WITH VISUAL SIGNAL AND HORN

- GENERAL NOTES:**
- VERIFY ALL UTILITIES AND CONNECTION LOCATIONS.
 - PROVIDE BLOCKING AND BACKING AS REQUIRED FOR EQUIPMENT AND ACCESSORIES.
 - CONTRACTOR SHALL VERIFY ALL EXISTING CONDITIONS AND DIMENSIONS PRIOR TO BEGINNING CONSTRUCTION.
 - ALL SURFACES OR FINISHES DAMAGED DURING CONSTRUCTION SHALL BE REPAIRED OR REPLACED AND SHALL MATCH ADJACENT MATERIALS.
 - ALL WORK MUST BE COORDINATED CLOSELY WITH THE VA PROJECT ENGINEER TO NOT ADVERSELY AFFECT OPERATIONS OUTSIDE OF THE WORK AREA. TEMPORARY 1-HOUR FIRE RATED CONSTRUCTION PARTITIONS WILL BE REQUIRED WHEN THE WORK AREA EXTENDS INTO AND AFFECTS EXISTING AREAS AND OPERATIONS.
 - REFER TO SHEET AF600 FOR FINISH MATERIALS



100% CONSTRUCTION DRAWINGS

Project Title V.A. HEALTH CARE SYSTEM RENOVATE 5TH FLOOR SURGERY		Project Number 438-15-201		Office of Construction and Facilities Management
Location SIoux FALLS, SOUTH DAKOTA		Building Number 5		
Date OCTOBER 11, 2017		Drawing Number 5-A1103		Department of Veterans Affairs
Checked DGS		Drawn AAD		

Dwg. 10 of 60

CONSULTANTS: 4609 SOUTH TECHLINK CIRCLE • SIOUX FALLS, SD 57106 PHONE: (605) 362-3753 • FAX: (605) 362-3759 RAPID CITY, SD • SIOUX FALLS, SD • CASPER, WY • CEDAR RAPIDS, IA • BISMARCK, ND	SEAL: 	ARCHITECT: 625 S. MINNESOTA AVENUE, SUITE 204 SIOUX FALLS, SOUTH DAKOTA 57104-4873 TELE: (605) 332-7850 FAX: (605) 332-3539	Drawing Title FIFTH FLOOR REFLECTED CEILING PLAN Approved: Project Director
---	------------------	---	--