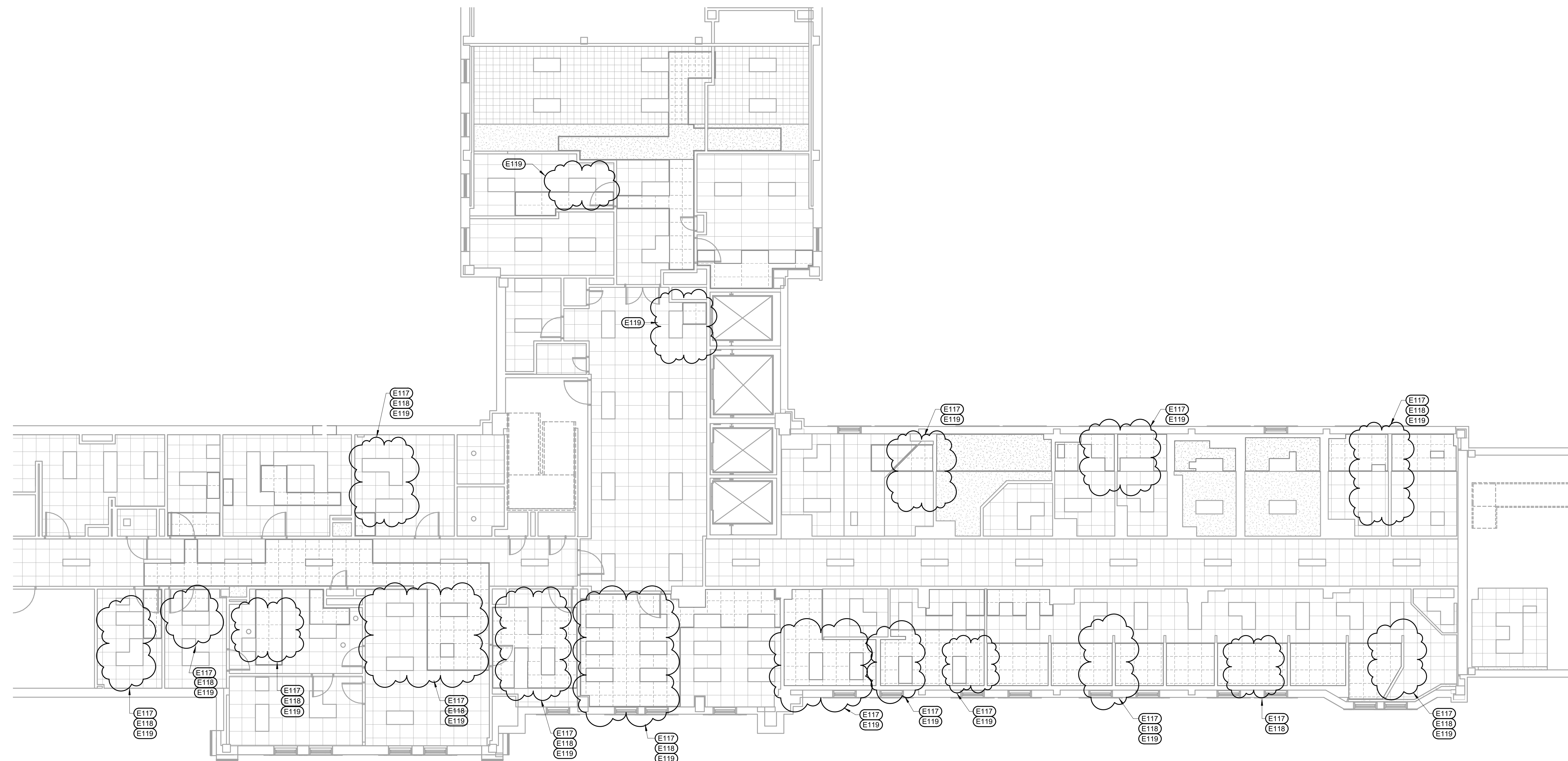


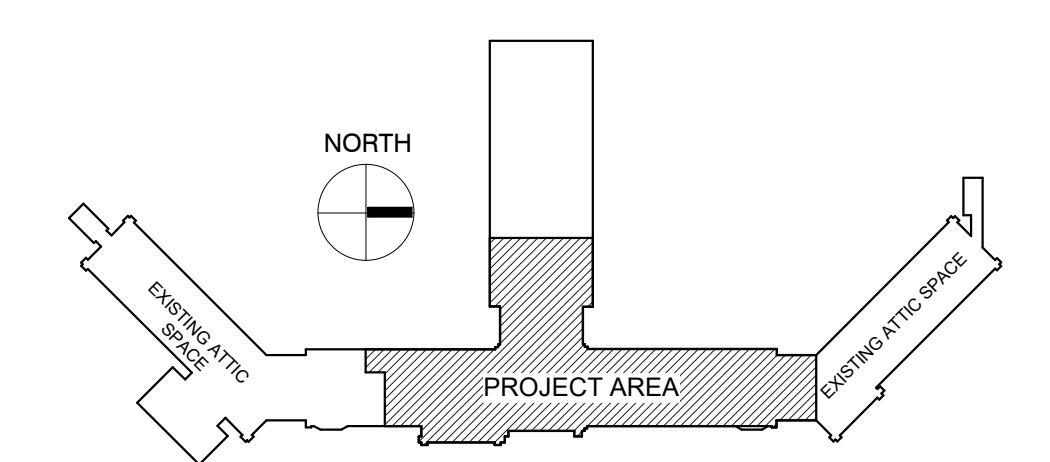
- KEYNOTES:**
- A CONTRACTOR SHALL VERIFY ALL EXISTING CONDITIONS AND DIMENSIONS PRIOR TO BEGINNING CONSTRUCTION.
 - B ALL SURFACES OR FINISHES DAMAGED DURING CONSTRUCTION SHALL BE REPAIRED OR REPLACED AT NO COST TO THE OWNER AND SHALL MATCH ADJACENT MATERIALS.
 - C ALL EXISTING CONDUIT, WIRE, CABLING, ETC. INCLUDING DATA AND PHONE ETC. NOT REQUIRED FOR SYSTEMS AND OR EQUIPMENT THAT REMAINS SHALL BE REMOVED BACK TO ITS SOURCE.
- ELECTRICAL SPECIFIC NOTES**
- E117 REMOVE "WAP" DURING DEMO AND RECONSTRUCTION WORK IN THIS AREA AND REINSTALL AT THE END OF EACH WORK PERIOD AND WHEN WORK IS COMPLETED.
 - E118 REMOVE DETECTOR DURING DEMO AND RECONSTRUCTION WORK IN THIS AREA AND REINSTALL AT THE END OF EACH WORK PERIOD AND WHEN WORK IS COMPLETED.
 - E119 REMOVE LIGHT FIXTURE DURING DEMO AND RECONSTRUCTION WORK IN THIS AREA AND REINSTALL AT THE END OF EACH WORK PERIOD AND WHEN THE WORK IS COMPLETED.



DEMOLITION CEILING PLAN - FOURTH FLOOR
SCALE: 1/8" = 1'-0"

- GENERAL NOTES:**
- A ALL WORK ON 4TH FLOOR TO BE COORDINATED WITH OWNER'S SCHEDULE AND ALL MATERIALS REMOVED MUST BE REINSTALLED, OPERATIONAL AND CLEANED FOR OWNER'S USE. AS DICTATED BY OWNER'S SCHEDULE.

KEY PLAN:



PHASING PLAN NOTE:
SEE ARCHITECTURAL PLANS FOR PHASING OF PROJECT

100% CONSTRUCTION DRAWINGS

Revisions:	Date

CONSULTANTS:

WPE WEST PLAINS ENGINEERING, INC. WPE #: BS15052
4609 SOUTH TECHLINK CIRCLE • SIOUX FALLS, SD 57106
PHONE: (605) 362-3753 • FAX: (605) 362-3759
WWW.WESTPLAINSENGINEERING.COM
RAPID CITY, SD • SIOUX FALLS, SD • CASPER, WY • CEDAR RAPIDS, IA • BISMARCK, ND

RISE STRUCTURAL ASSOCIATES, INC.
101 Railroad Ave. - PO Box 39
Harrisburg, SD 57032
(605) 743-2510
fax(605) 743-2513



ARCHITECTS/ ENGINEERS:

MSH ARCHITECTS
625 S. MINNESOTA AVENUE, SUITE 204
SIOUX FALLS, SOUTH DAKOTA 57104-4873
TELE: (605) 332-7850 FAX: (605) 332-3539

Drawing Title
DEMOLITION CEILING PLAN - FOURTH FLOOR

Approved: Project Director

Project Title
V.A. HEALTH CARE SYSTEM RENOVATE 5TH FLOOR SURGERY

Project Number
438-15-201

Building Number
5

Location
SIOUX FALLS, SOUTH DAKOTA

Date
OCTOBER 17, 2017

Checked
MF

Drawn
GL

Drawing Number
5-ED100

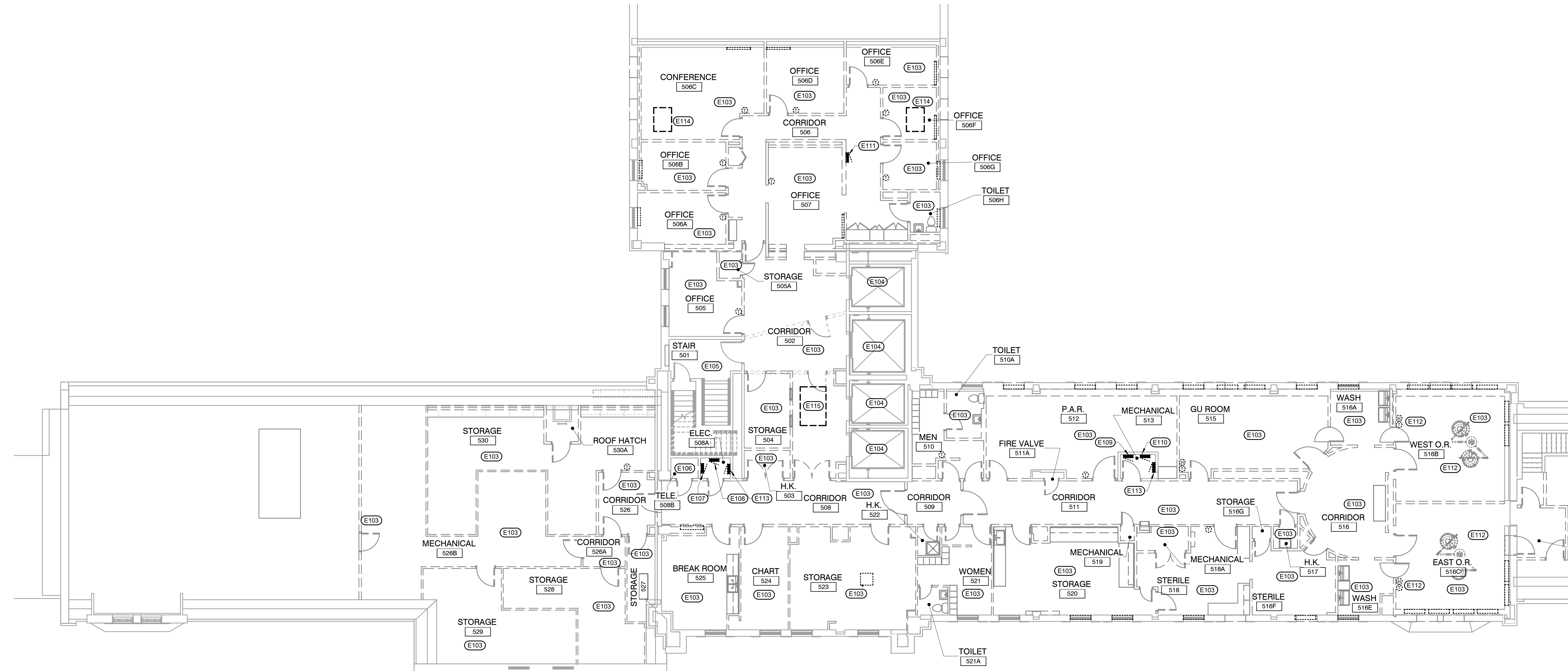
Dwg. 53 of 60

Office of Construction and Facilities Management

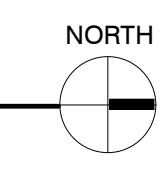
three inches = one foot
one and one half inches = one foot
one inch = one foot
three quarters inch = one foot
one half inch = one foot
three eighths inch = one foot
one quarter inch = one foot
one eighth inch = one foot

KEYNOTES:

- ELECTRICAL SPECIFIC NOTES**
- E103 DISCONNECT AND REMOVE ELECTRICAL SERVICES FROM THIS ROOM BACK TO PANEL SERVING IT.
 - E104 EXISTING ELEVATORS TO REMAIN IN OPERATION.
 - E105 NO DEMOLITION WORK IN STAIR 501.
 - E106 EXISTING TELEPHONE AND DATA ROOM. PROVIDE NEW RACKS AS NEEDED AND BACKBOARDS AND MAINTAIN EXISTING DATA CONNECTIONS NOT TERMINATED ON 5TH FLOOR AND AS NOTED ON SHEET 5-EP102. ALL EXISTING DATA AND TV CABLES THAT TERMINATE ON THE 5TH FLOOR SHALL BE REMOVED FROM THE 4TH FLOOR DATA RACK AND INSTALLED IN THE 5TH FLOOR DATA CLOSET.
 - E107 REMOVE EXISTING PANEL "O". FEEDER TO REMAIN AND RECONNECT TO THE NEW PANEL S#1 SHOWN ON SHEET 5-EP101. POWER FOR THE PANEL IS FROM THE BASEMENT ELECTRICAL ROOM E#1 SWITCHBOARD 5-2 WEST CIRCUIT #38.
 - E108 REMOVE EXISTING EMERGENCY PANEL. FEEDER TO REMAIN AND BE RECONNECTED TO THE NEW SEM PANEL SHOWN ON SHEET 5-EP101. POWER FOR THE PANEL IS FROM THE BASEMENT ELECTRICAL ROOM E#1 EMERGENCY PANEL EL CIRCUIT #19.
 - E109 REMOVE EXISTING PANEL "CP1". FEEDER TO REMAIN AND BE RECONNECTED TO THE NEW SCP1 PANEL SHOWN ON SHEET 5-EP101. POWER FOR THE PANEL IS FROM THE BASEMENT ELECTRICAL ROOM E#1 PANEL EL CIRCUIT #16.
 - E110 REMOVE EXISTING PANEL "CP2". FEEDER TO REMAIN AND BE RECONNECTED TO THE NEW SCP2 PANEL SHOWN ON SHEET 5-EP101. POWER FOR THE PANEL IS FROM THE BASEMENT ELECTRICAL ROOM E#1 PANEL EL CIRCUIT #18.
 - E111 REMOVE EXISTING PANEL "H". FEEDER TO REMAIN AND BE RECONNECTED TO THE NEW S#2 PANEL SHOWN ON SHEET 5-EP101. MODIFY FEEDER LOCATION TO BE CONCEALED IN THE NEW WALL. POWER FOR THE PANEL IS FROM THE BASEMENT ELECTRICAL ROOM E#1 SWITCHBOARD 5-2 WEST CIRCUIT #18.
 - E112 DISCONNECT AND REMOVE POWER BACK TO SERVICE FOR O. R. LIGHTS AND CONTROLS. PROVIDE NEW CIRCUIT AND RECONNECT TO THE RELOCATED O. R. LIGHTS IN THE NEW MINOR PROCEDURE ROOMS. SEE SHEET EL-101.
 - E113 DISCONNECT AND REMOVE THE POWER AND GROUNDING SYSTEM TO THE ISOLATION GROUND MONITORING SYSTEMS FOR THE OR PANELS BEING REMOVED.
 - E114 DISCONNECT THE POWER TO THE MECHANICAL EQUIPMENT LOCATED ABOVE THE CEILING STRUCTURE. (SEE MECHANICAL PLANS FOR EXACT LOCATION. RETAIN CIRCUIT AND RECONNECT TO THE NEW UNIT WHEN INSTALLED. SEE SHEET 5-EP101 FOR INFORMATION.
 - E115 EXISTING HATCH TO PENTHOUSE. ALL PERMANENTLY INSTALLED CONDUIT AND/OR EQUIPMENT/DEVICES/ETC. SHALL BE INSTALLED SO AS NOT TO CONFLICT WITH THE OWNER'S ABILITY TO USE THIS AREA AND SHALL NOT REQUIRE THE NEED TO DISCONNECT ANY ITEMS IN THE CEILING OR SPACE ABOVE IT.



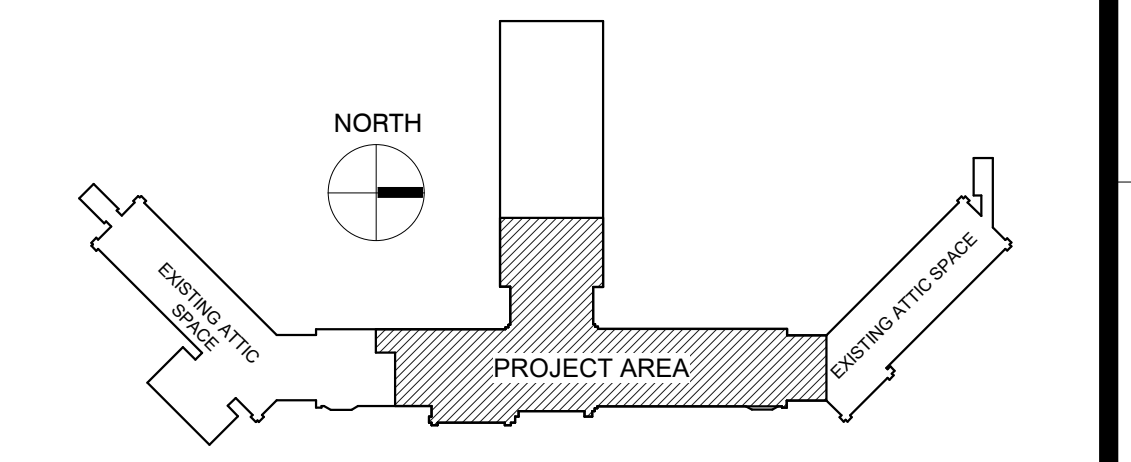
DEMOLITION ELECTRICAL PLAN - FIFTH FLOOR
 SCALE: 1/8" = 1'-0"



GENERAL NOTES:





- A CONTRACTOR SHALL VERIFY ALL EXISTING CONDITIONS AND DIMENSIONS PRIOR TO BEGINNING CONSTRUCTION.
- B ALL SURFACES OR FINISHES DAMAGED DURING CONSTRUCTION SHALL BE REPAIRED OR REPLACED AT NO COST TO THE OWNER AND SHALL MATCH ADJACENT MATERIALS.
- C ALL EXISTING CONDUIT, WIRE, CABLEING, ETC. INCLUDING DATA AND PHONE ETC. NOT REQUIRED FOR SYSTEMS AND OR EQUIPMENT THAT REMAINS SHALL BE REMOVED BACK TO ITS SOURCE.

KEY PLAN:



PHASING PLAN NOTE:
 SEE ARCHITECTURAL PLANS
 FOR PHASING OF PROJECT

100% CONSTRUCTION DRAWINGS

CONSULTANTS:  WPE # BS15052 4609 SOUTH TECHLINK CIRCLE • SIOUX FALLS, SD 57106 PHONE: (605) 362-3753 • FAX: (605) 362-3759 WWW.WESTPLAINSENGINEERING.COM RAPID CITY, SD • SIOUX FALLS, SD • CASPER, WY • CEDAR RAPIDS, IA • BISMARCK, ND		ARCHITECTS/ ENGINEERS:  STRUCTURAL ASSOCIATES INC. 101 Railroad Ave. - PO Box 39 Harrisburg, SD 57032 (605) 743-2510 fax(605) 743-2513		 MSH ARCHITECTS 625 S. MINNESOTA AVENUE, SUITE 204 SIOUX FALLS, SOUTH DAKOTA 57104-4873 TELE: (605) 332-7850 FAX: (605) 332-3539		Drawing Title DEMOLITION ELECTRICAL PLAN - FIFTH FLOOR Approved: Project Director		Project Title V.A. HEALTH CARE SYSTEM RENOVATE 5TH FLOOR SURGERY Project Number 438-15-201 Building Number 5 Drawing Number 5-ED101 Dwg. 54 of 60		Location SIOUX FALLS, SOUTH DAKOTA Date OCTOBER 17, 2017 Checked MF Drawn GL		Office of Construction and Facilities Management 	
--	--	---	--	--	--	--	--	---	--	---	--	---	--