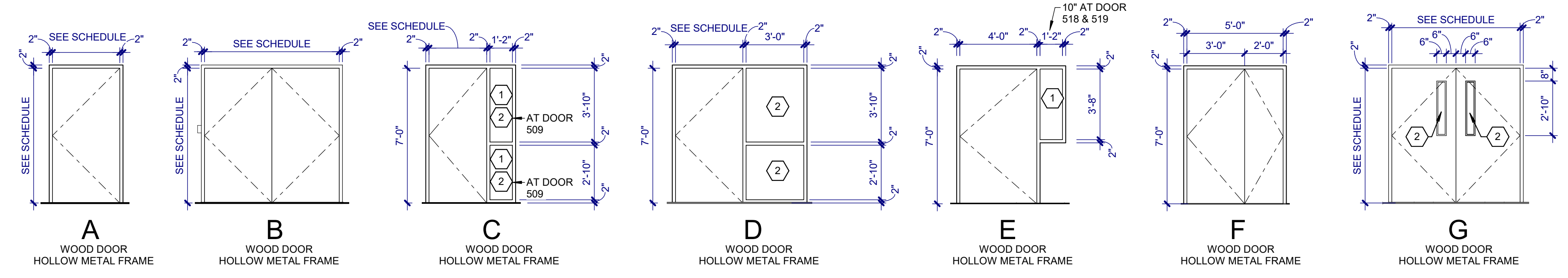


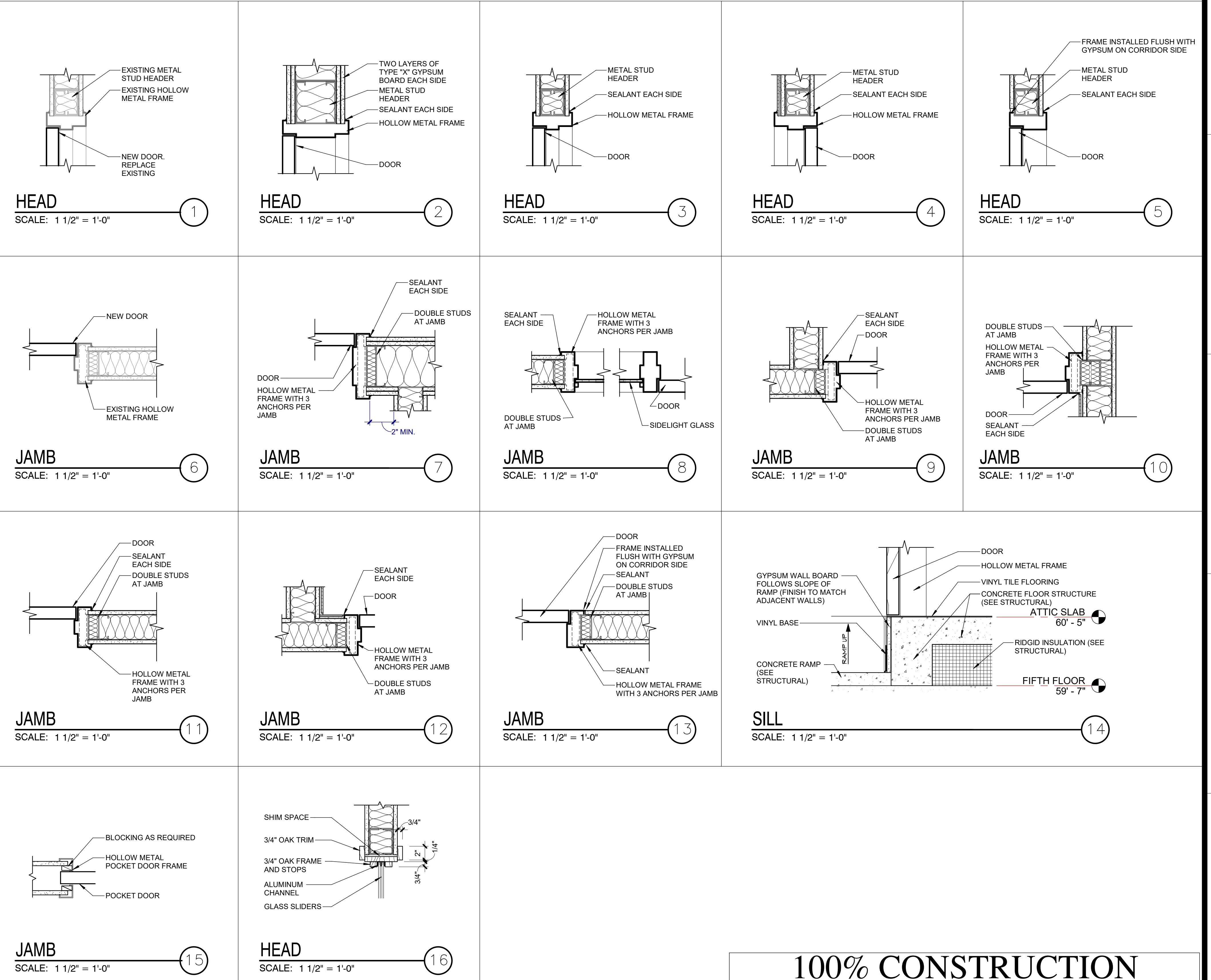
KEYNOTES:
 ① 20 MINUTE FIRE RESISTANT GLASS WHERE INDICATED ON SCHEDULE
 ② 45 MINUTE FIRE RESISTANT GLASS WHERE INDICATED ON SCHEDULE

MAR K	DOOR			DOOR GLAZING	CORE	MATERIAL	FINISH	EL	FRAME		FIRE RATING LABEL	HDW. GROUP	NOTES
	WIDTH	HEIGHT	THICK						SIDE GLAZING	HEAD JAMB			
500C	PAIR OF 3'-4"	7'-0"	1 3/4"	WOOD STAIN SOLID	45 MIN	H.M.	PAINT	G	-	3/AI502 9/AI502	45 MIN	18	DOUBLE EGRESS, SELF CLOSING, POSITIVE LATCHING, MAGNETIC HOLD OPEN
500E	2'-0"	7'-0"	1 3/4"	WOOD STAIN SOLID	-	H.M.	PAINT	A	-	3/AI502 11/AI502	20 MIN	15	SELF CLOSING, POSITIVE LATCHING
500F	2'-4"	7'-0"	1 3/4"	WOOD STAIN SOLID	-	H.M.	PAINT	A	-	1/AI502 6/AI502	20 MIN	15	REMOVE AND REPLACE DOOR PANEL ONLY, EXISTING HOLLOW METAL FRAME TO REMAIN
501	3'-6"	7'-0"	1 3/4"	WOOD STAIN SOLID	-	H.M.	PAINT	D	45 MIN	3/AI502 8/AI502	45 MIN	06	180 DEGREE SWING, 36 INCH SIDELIGHT, MAGNETIC HOLD OPEN
502	3'-0"	7'-0"	1 3/4"	WOOD STAIN SOLID	-	H.M.	PAINT	C	NR	3/AI502 8/AI502	-	20	14 INCH SIDELIGHT
502A	3'-0"	7'-0"	1 3/4"	WOOD STAIN SOLID	-	H.M.	PAINT	A	-	16/AI502 13/AI502	-	24	POCKET DOOR
503	3'-6"	7'-0"	1 3/4"	WOOD STAIN SOLID	-	H.M.	PAINT	A	-	3/AI502 12/AI502	20 MIN	03	
504	3'-0"	7'-0"	1 3/4"	WOOD STAIN SOLID	-	H.M.	PAINT	C	20 MIN	3/AI502 8/AI502	20 MIN	21	14 INCH SIDELIGHT
505	3'-0"	7'-0"	1 3/4"	WOOD STAIN SOLID	-	H.M.	PAINT	C	20 MIN	3/AI502 8/AI502	20 MIN	20	14 INCH SIDELIGHT
506	3'-0"	7'-0"	1 3/4"	WOOD STAIN SOLID	-	H.M.	PAINT	C	20 MIN	3/AI502 8/AI502	20 MIN	20	14 INCH SIDELIGHT
507	3'-0"	7'-0"	1 3/4"	WOOD STAIN SOLID	-	H.M.	PAINT	C	20 MIN	3/AI502 8/AI502	20 MIN	01	14 INCH SIDELIGHT
508	3'-6"	7'-0"	1 3/4"	WOOD STAIN SOLID	-	H.M.	PAINT	C	20 MIN	3/AI502 8/AI502	20 MIN	07	14 INCH SIDELIGHT
509	3'-6"	7'-0"	1 3/4"	WOOD STAIN SOLID	-	H.M.	PAINT	C	45 MIN	3/AI502 8/AI502	45 MIN	21	SELF CLOSING, POSITIVE LATCHING, 14" SIDELIGHT
510	PAIR OF 3'-6"	7'-0"	1 3/4"	WOOD STAIN SOLID	45 MIN	H.M.	PAINT	G	-	3/AI502 9/AI502	45 MIN	12	SELF CLOSING, POSITIVE LATCHING, AUTOMATIC DOOR OPENER, CARD READER IN BOTH DIRECTIONS
510A	3'-0"	7'-0"	1 3/4"	WOOD STAIN SOLID	-	H.M.	PAINT	A	-	3/AI502 9/AI502	-	01	
510B	3'-0"	7'-0"	1 3/4"	WOOD STAIN SOLID	-	H.M.	PAINT	A	-	4/AI502 12/AI502	-	02	
510C	3'-0"	7'-0"	1 3/4"	WOOD STAIN SOLID	-	H.M.	PAINT	A	-	3/AI502 9/AI502	-	01	
510D	3'-0"	7'-0"	1 3/4"	WOOD STAIN SOLID	-	H.M.	PAINT	A	-	4/AI502 12/AI502	-	02	
510E	3'-0"	7'-0"	1 3/4"	WOOD STAIN SOLID	-	H.M.	PAINT	A	-	3/AI502 9/AI502	45 MIN	16	SELF CLOSING, POSITIVE LATCHING, CARD READER WITH AUTOMATIC DOOR LATCH
510F	3'-0"	7'-0"	1 3/4"	WOOD STAIN SOLID	-	H.M.	PAINT	A	-	3/AI502 9/AI502	20 MIN	13	
511	4'-0"	7'-0"	1 3/4"	WOOD STAIN SOLID	-	H.M.	PAINT	E	20 MIN	3/AI502 8/AI502	20 MIN	22	
512	4'-0"	7'-0"	1 3/4"	WOOD STAIN SOLID	-	H.M.	PAINT	E	20 MIN	3/AI502 8/AI502	20 MIN	22	
513	3'-0"	7'-0"	1 3/4"	WOOD STAIN SOLID	-	H.M.	PAINT	A	-	3/AI502 9/AI502	45 MIN	23	180 DEGREE SWING, SELF CLOSING, POSITIVE LATCHING
514	3'-0"	7'-0"	1 3/4"	WOOD STAIN SOLID	-	H.M.	PAINT	A	-	3/AI502 9/AI502	20 MIN	23	
515	3'-0"	7'-0"	1 3/4"	WOOD STAIN SOLID	-	H.M.	PAINT	A	-	2/AI502 7/AI502	90 MIN	09	SELF CLOSING, SELF LATCHING
516	3'-0"	7'-0"	1 3/4"	WOOD STAIN SOLID	-	H.M.	PAINT	A	-	3/AI502 9/AI502	20 MIN	23	
517	3'-0"	7'-0"	1 3/4"	WOOD STAIN SOLID	-	H.M.	PAINT	A	-	3/AI502 11/AI502	20 MIN	23	
518	4'-0"	7'-0"	1 3/4"	WOOD STAIN SOLID	-	H.M.	PAINT	E	20 MIN	3/AI502 9/AI502	20 MIN	19	10 INCH SIDELIGHT
519	4'-0"	7'-0"	1 3/4"	WOOD STAIN SOLID	-	H.M.	PAINT	E	20 MIN	3/AI502 9/AI502	20 MIN	19	10 INCH SIDELIGHT
520	2'-8"	7'-0"	1 3/4"	WOOD STAIN SOLID	-	H.M.	PAINT	A	-	5/AI502 13/AI502	20 MIN	25	CARD READER WITH AUTOMATIC DOOR LATCH, SILL DETAIL 14/AI502
521	2'-8"	7'-0"	1 3/4"	WOOD STAIN SOLID	-	H.M.	PAINT	A	-	5/AI502 13/AI502	20 MIN	25	CARD READER WITH AUTOMATIC DOOR LATCH, SILL DETAIL 14/AI502
522	3'-0"	7'-0"	1 3/4"	WOOD STAIN SOLID	-	H.M.	PAINT	A	-	3/AI502 9/AI502	45 MIN	05	SELF CLOSING, POSITIVE LATCHING
523	PAIR OF 2'-0"	7'-0"	1 3/4"	WOOD STAIN SOLID	-	H.M.	PAINT	B	-	3/AI502 11/AI502	45 MIN	10	SELF CLOSING, POSITIVE LATCHING
524	3'-6"	7'-0"	1 3/4"	WOOD STAIN SOLID	-	H.M.	PAINT	A	-	3/AI502 11/AI502	45 MIN	08	SELF CLOSING, POSITIVE LATCHING
525	3'-0"	7'-0"	1 3/4"	WOOD STAIN SOLID	-	H.M.	PAINT	C	20 MIN	3/AI502 8/AI502	20 MIN	20	14 INCH SIDELIGHT
526	3'-6"	7'-0"	1 3/4"	WOOD STAIN SOLID	-	H.M.	PAINT	C	20 MIN	3/AI502 8/AI502	20 MIN	21	14 INCH SIDELIGHT
527	3'-0"	7'-0"	1 3/4"	WOOD STAIN SOLID	-	H.M.	PAINT	A	-	1/AI502 6/AI502	20 MIN	14	REMOVE AND REPLACE DOOR PANEL ONLY, EXISTING HOLLOW METAL FRAME TO REMAIN
528	3'-6"	7'-0"	1 3/4"	WOOD STAIN SOLID	-	H.M.	PAINT	C	20 MIN	3/AI502 8/AI502	20 MIN	20	14 INCH SIDELIGHT
529	3'-6"	7'-0"	1 3/4"	WOOD STAIN SOLID	-	H.M.	PAINT	C	20 MIN	3/AI502 8/AI502	20 MIN	20	14 INCH SIDELIGHT
530	3'-6"	7'-0"	1 3/4"	WOOD STAIN SOLID	-	H.M.	PAINT	C	20 MIN	3/AI502 8/AI502	20 MIN	20	14 INCH SIDELIGHT
531	3'-6"	7'-0"	1 3/4"	WOOD STAIN SOLID	-	H.M.	PAINT	C	20 MIN	3/AI502 8/AI502	20 MIN	20	14 INCH SIDELIGHT
532	3'-6"	7'-0"	1 3/4"	WOOD STAIN SOLID	-	H.M.	PAINT	C	20 MIN	3/AI502 8/AI502	20 MIN	20	14 INCH SIDELIGHT
533	3'-6"	7'-0"	1 3/4"	WOOD STAIN SOLID	-	H.M.	PAINT	C	20 MIN	3/AI502 8/AI502	20 MIN	20	14 INCH SIDELIGHT
534	1'-3/4" x 3'-4" x 1'-2'-0"	7'-0"	1 3/4"	WOOD STAIN SOLID	-	H.M.	PAINT	F	-	3/AI502 9/AI502	45 MIN	11	SELF CLOSING, POSITIVE LATCHING, DOUBLE UNEVEN
534B	3'-6"	7'-0"	1 3/4"	WOOD STAIN SOLID	-	H.M.	PAINT	A	-	2/AI502 7/AI502	90 MIN	17	SELF CLOSING, SELF LATCHING
535	3'-6"	7'-0"	1 3/4"	WOOD STAIN SOLID	-	H.M.	PAINT	C	20 MIN	3/AI502 8/AI502	20 MIN	20	14 INCH SIDELIGHT
536	3'-0"	7'-0"	1 3/4"	WOOD STAIN SOLID	-	H.M.	PAINT	C	20 MIN	3/AI502 8/AI502	20 MIN	04	14 INCH SIDELIGHT
537	3'-6"	7'-0"	1 3/4"	WOOD STAIN SOLID	-	H.M.	PAINT	C	20 MIN	3/AI502 8/AI502	20 MIN	20	14 INCH SIDELIGHT
538	3'-6"	7'-0"	1 3/4"	WOOD STAIN SOLID	-	H.M.	PAINT	C	20 MIN	3/AI502 8/AI502	20 MIN	20	14 INCH SIDELIGHT
539	3'-6"	7'-0"	1 3/4"	WOOD STAIN SOLID	-	H.M.	PAINT	C	20 MIN	3/AI502 8/AI502	20 MIN	20	14 INCH SIDELIGHT
540	3'-6"	7'-0"	1 3/4"	WOOD STAIN SOLID	-	H.M.	PAINT	C	20 MIN	3/AI502 8/AI502	20 MIN	20	14 INCH SIDELIGHT
541	3'-6"	7'-0"	1 3/4"	WOOD STAIN SOLID	-	H.M.	PAINT	C	20 MIN	3/AI502 8/AI502	20 MIN	20	14 INCH SIDELIGHT
542	3'-6"	7'-0"	1 3/4"	WOOD STAIN SOLID	-	H.M.	PAINT	C	20 MIN	3/AI502 8/AI502	20 MIN	20	14 INCH SIDELIGHT
543	3'-0"	7'-0"	1 3/4"	WOOD STAIN SOLID	-	H.M.	PAINT	A	-	3/AI502 11/AI502	45 MIN	08	SELF CLOSING, POSITIVE LATCHING
544	3'-8"	7'-0"	1 3/4"	WOOD STAIN SOLID	-	H.M.	PAINT	A	-	3/AI502 10/AI502	45 MIN	03	SELF CLOSING, POSITIVE LATCHING
545	3'-6"	7'-0"	1 3/4"	WOOD STAIN SOLID	-	H.M.	PAINT	A	-	3/AI502 10/AI502	45 MIN	03	SELF CLOSING, POSITIVE LATCHING

NOTE: ALL DOORS AND FRAMES SHALL HAVE AN ACOUSTIC RATING OF STC 38 MINIMUM.



DOOR AND FRAME TYPES
SCALE: 1/4" = 1'-0"



100% CONSTRUCTION DRAWINGS

Project Title V.A. HEALTH CARE SYSTEM RENOVATE 5TH FLOOR SURGERY		Project Number 438-15-201	
Location SIoux FALLS, SOUTH DAKOTA		Building Number 5	
Date OCTOBER 11, 2017	Checked DGS	Drawn AAD	Drawing Number 5-AI502
Office of Construction and Facilities Management		Department of Veterans Affairs	

Dwg. 17 of 60

Revisions:	Date:

CONSULTANTS:

WPE WEST PLAINS ENGINEERING
4609 SOUTH TECHLINK CIRCLE • SIOUX FALLS, SD 57106
PHONE: (605) 362-3753 • FAX: (605) 362-3759
RAPID CITY, SD • SIOUX FALLS, SD • CASPER, WY • CEDAR RAPIDS, IA • BISMARK, ND

RISE STRUCTURAL ASSOCIATES INC.
101 Railroad Ave., PO Box 39
Harrisburg, SD 57132
(605) 743-2510
fax (605) 743-2513

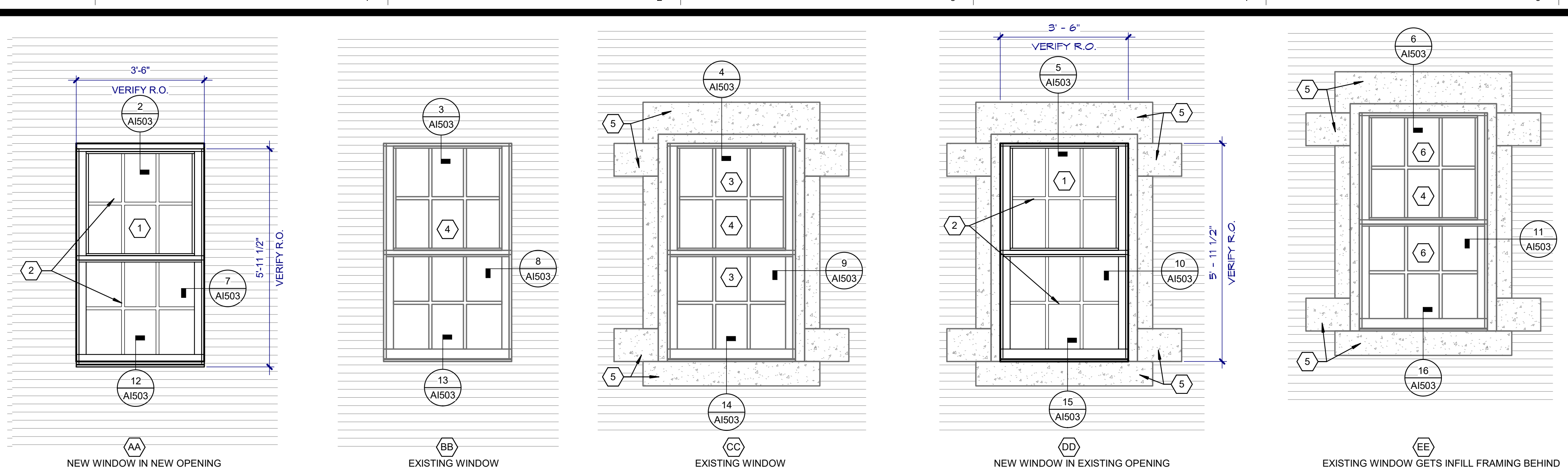
SEAL:

REGISTERED ARCHITECT
REG. NO. 3907
ROBIN J. ROHLER
SOUTH DAKOTA

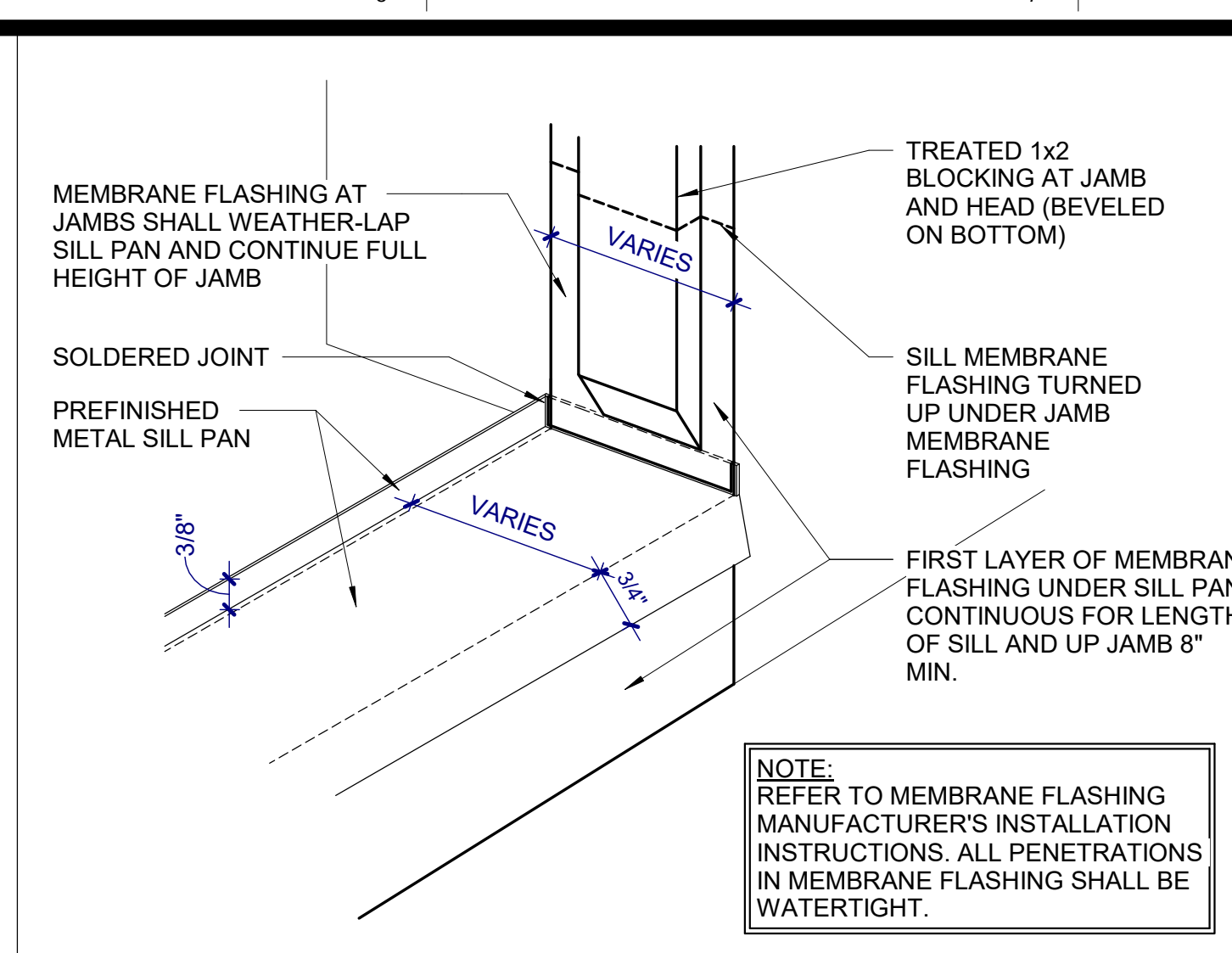
ARCHITECT:

MSH ARCHITECTS
625 S. MINNESOTA AVENUE, SUITE 204
SIOUX FALLS, SOUTH DAKOTA 57104-4873
TELE: (605) 332-7850 FAX: (605) 332-3539

Drawing Title
DOOR SCHEDULE, DOOR AND WINDOW FRAMES AND DETAILS

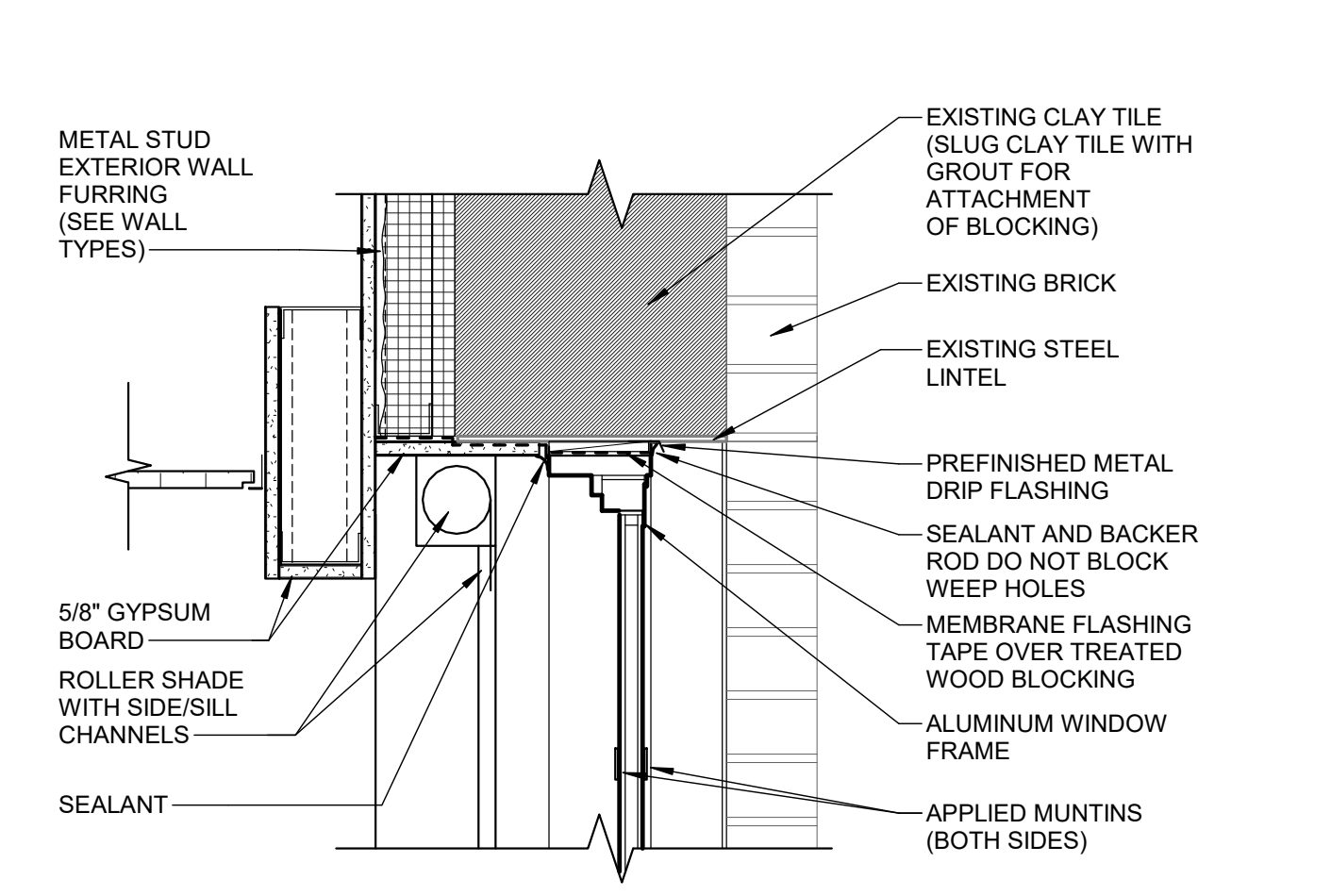


WINDOW TYPES
SCALE: 1/2" = 1'-0"

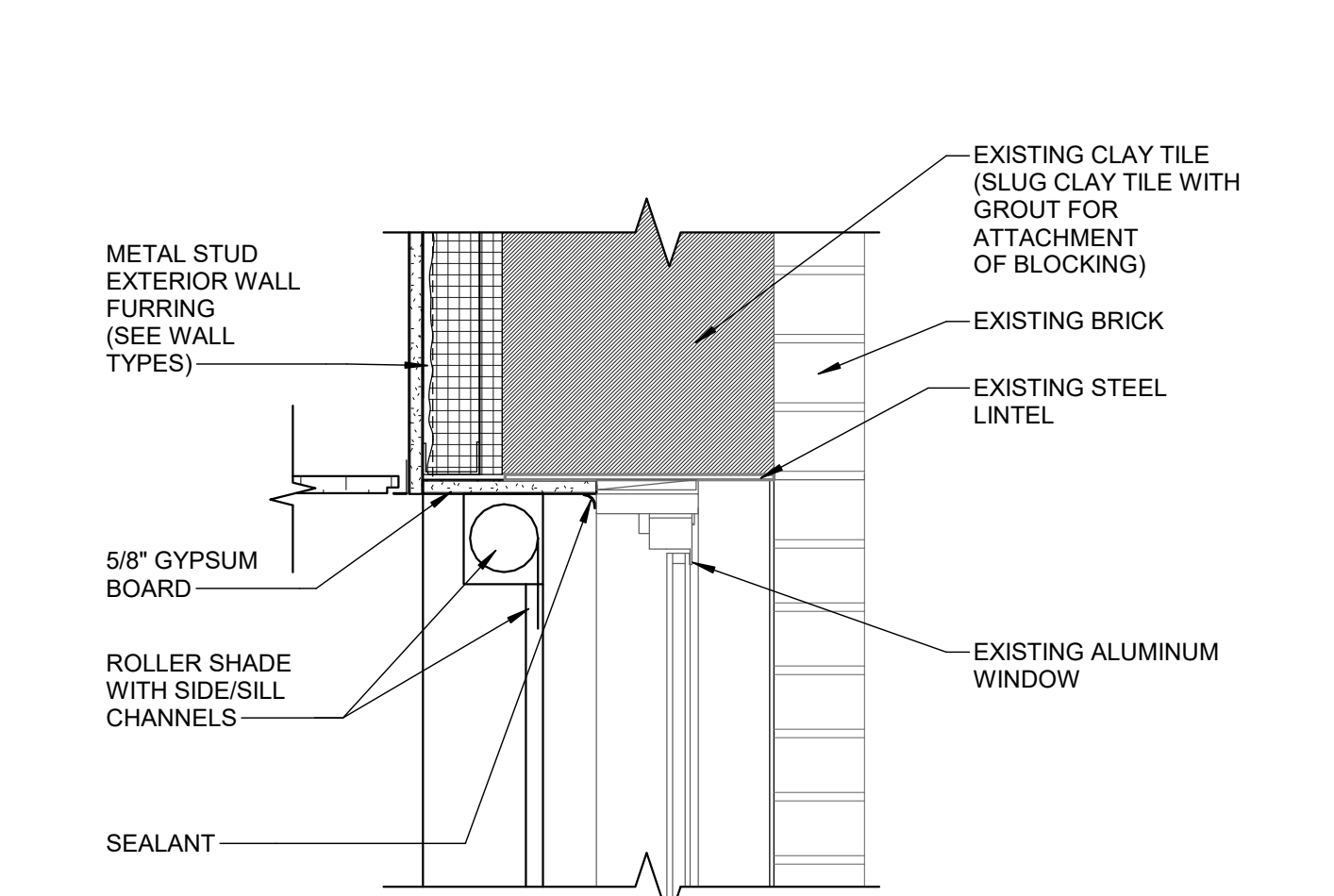


TYPICAL SILL FLASHING DETAIL
SCALE: 6" = 1'-0"

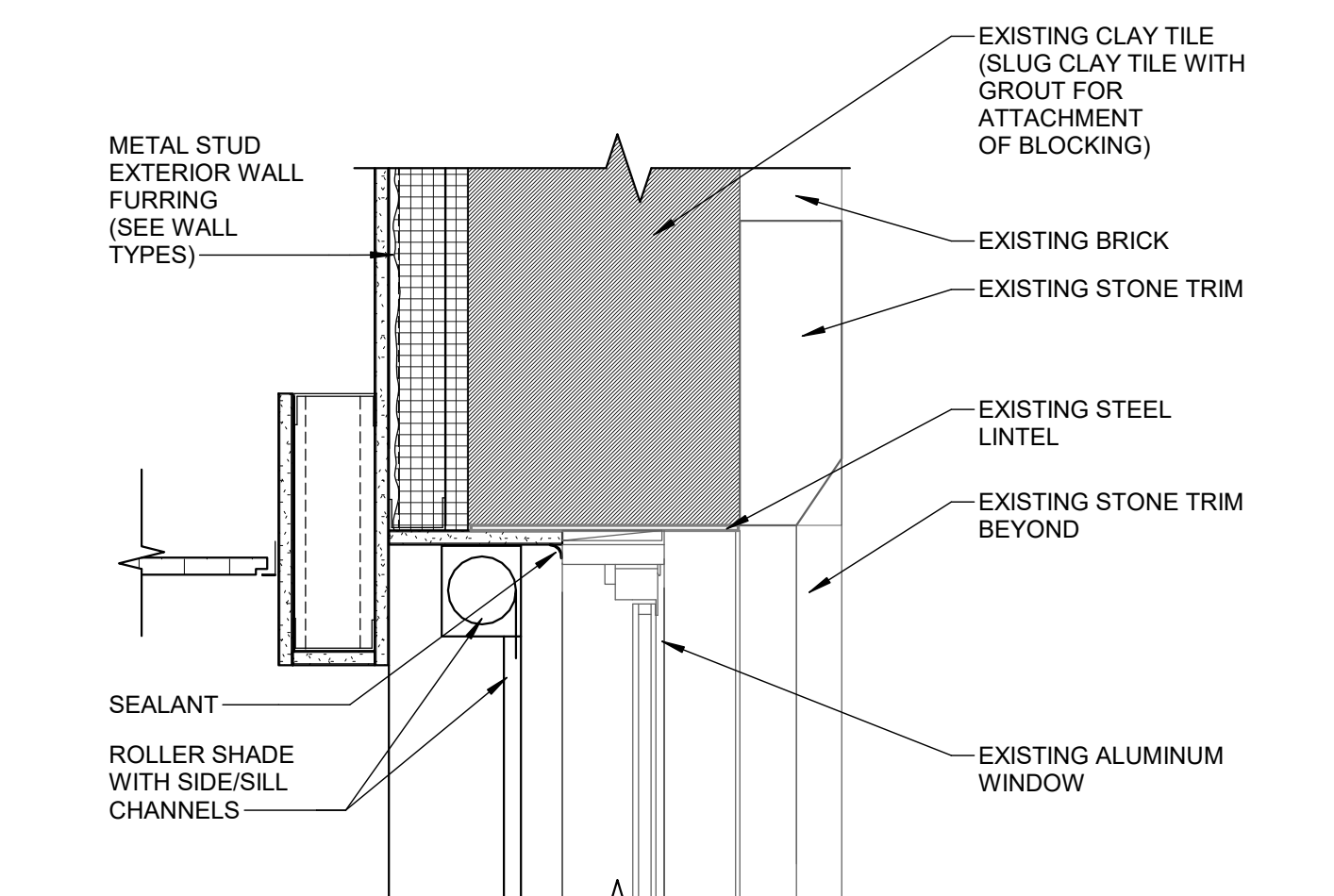
- KEYNOTES:**
- 1" TINTED LOW-E INSULATED GLASS
 - FACTORY APPLIED FLAT MUNTIN BARS ON #1 AND #4 SURFACE OF INSULATED GLASS UNIT (MATCH EXISTING WINDOWS)
 - REPLACE GLAZING IN EXISTING WINDOW WITH FROSTED, OBTURATED 1" TINTED LOW-E INSULATED GLASS UNIT IN ROOMS 544, 510A, 510A, 510B X 2, AND 510D
 - EXISTING ALUMINUM WINDOW
 - EXISTING STONE TRIM
 - ADD WHITE WHITEOUT FILM ON INSIDE FACE OF GLAZING



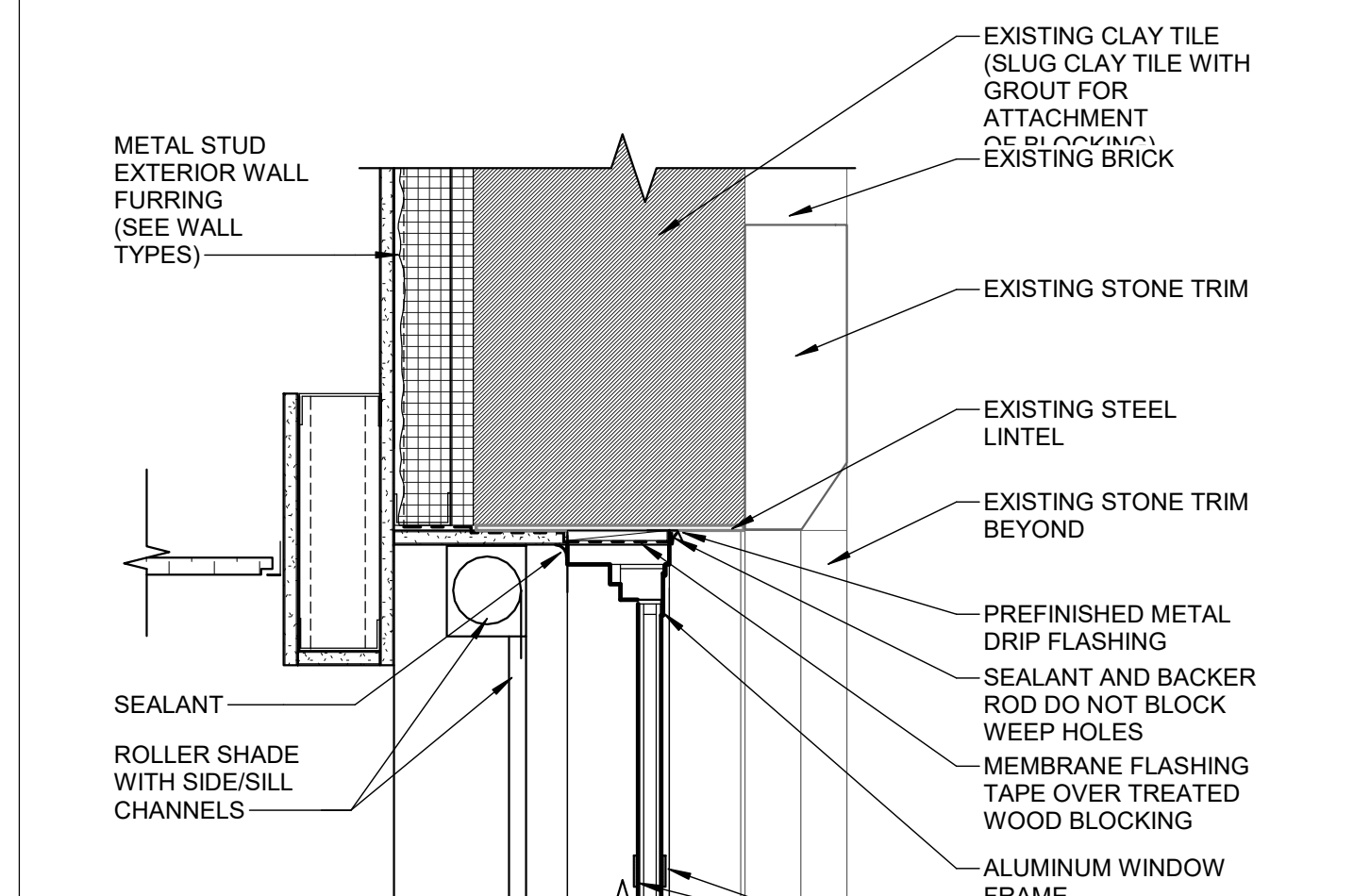
HEAD
SCALE: 1 1/2" = 1'-0"



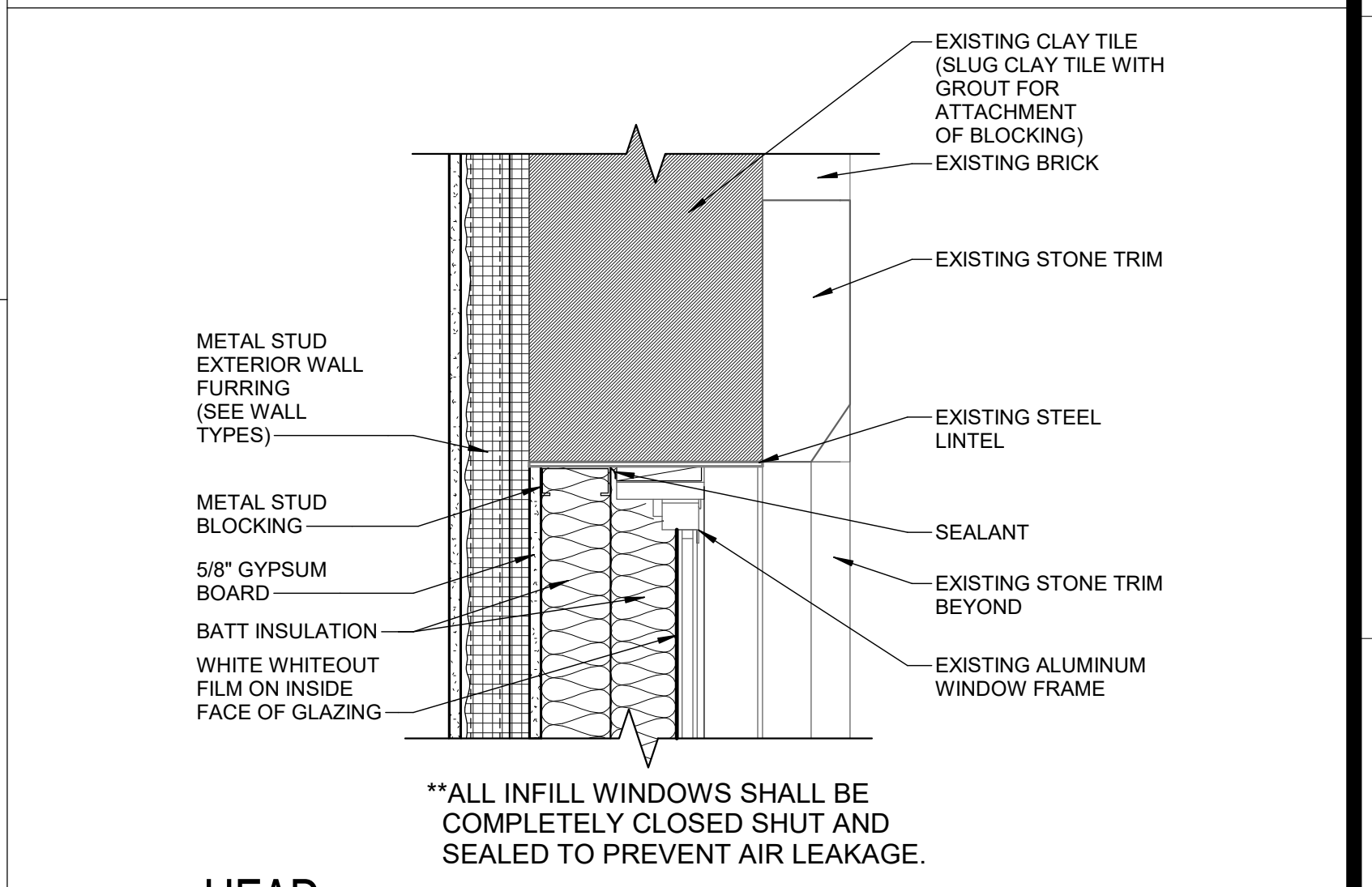
HEAD
SCALE: 1 1/2" = 1'-0"



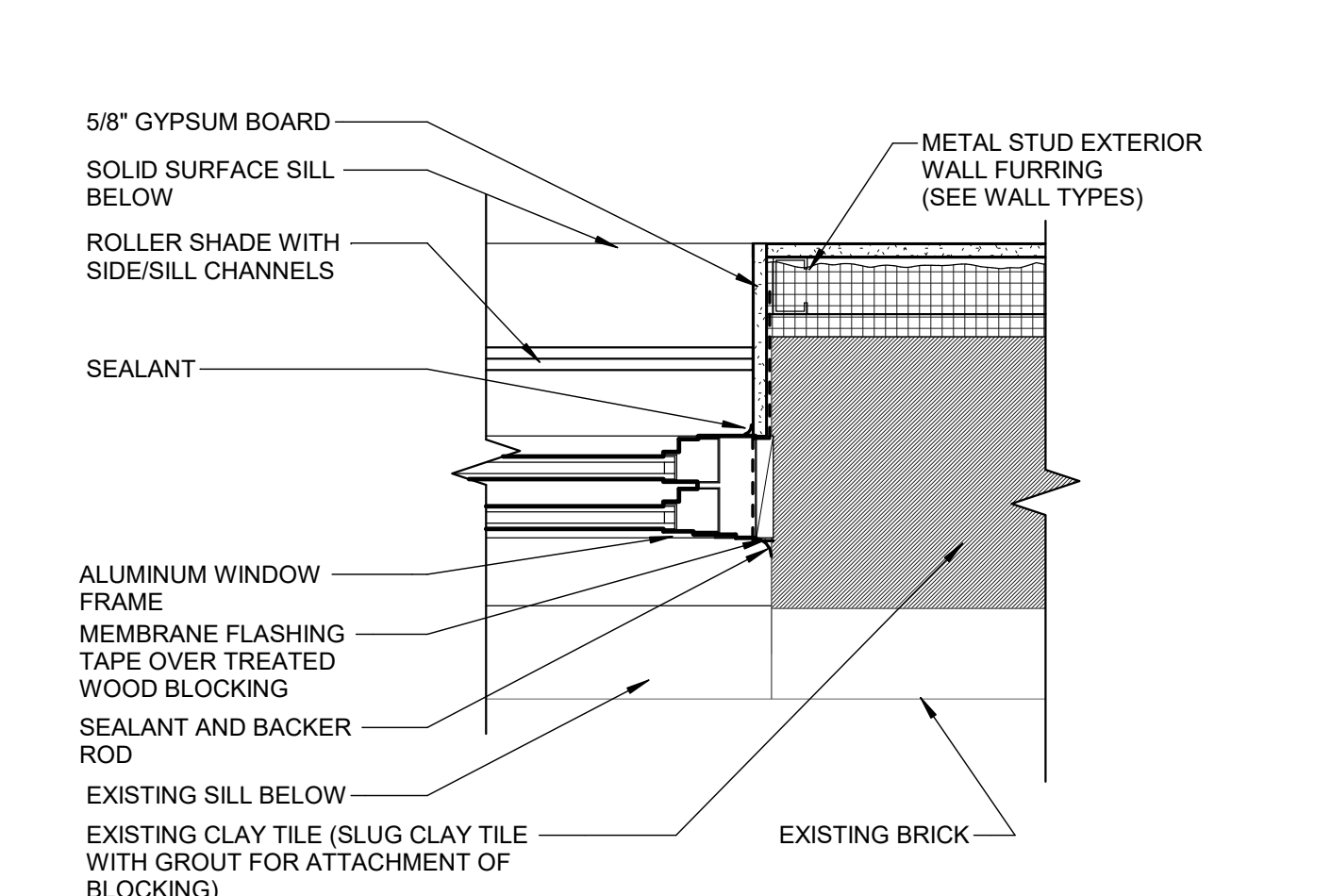
HEAD
SCALE: 1 1/2" = 1'-0"



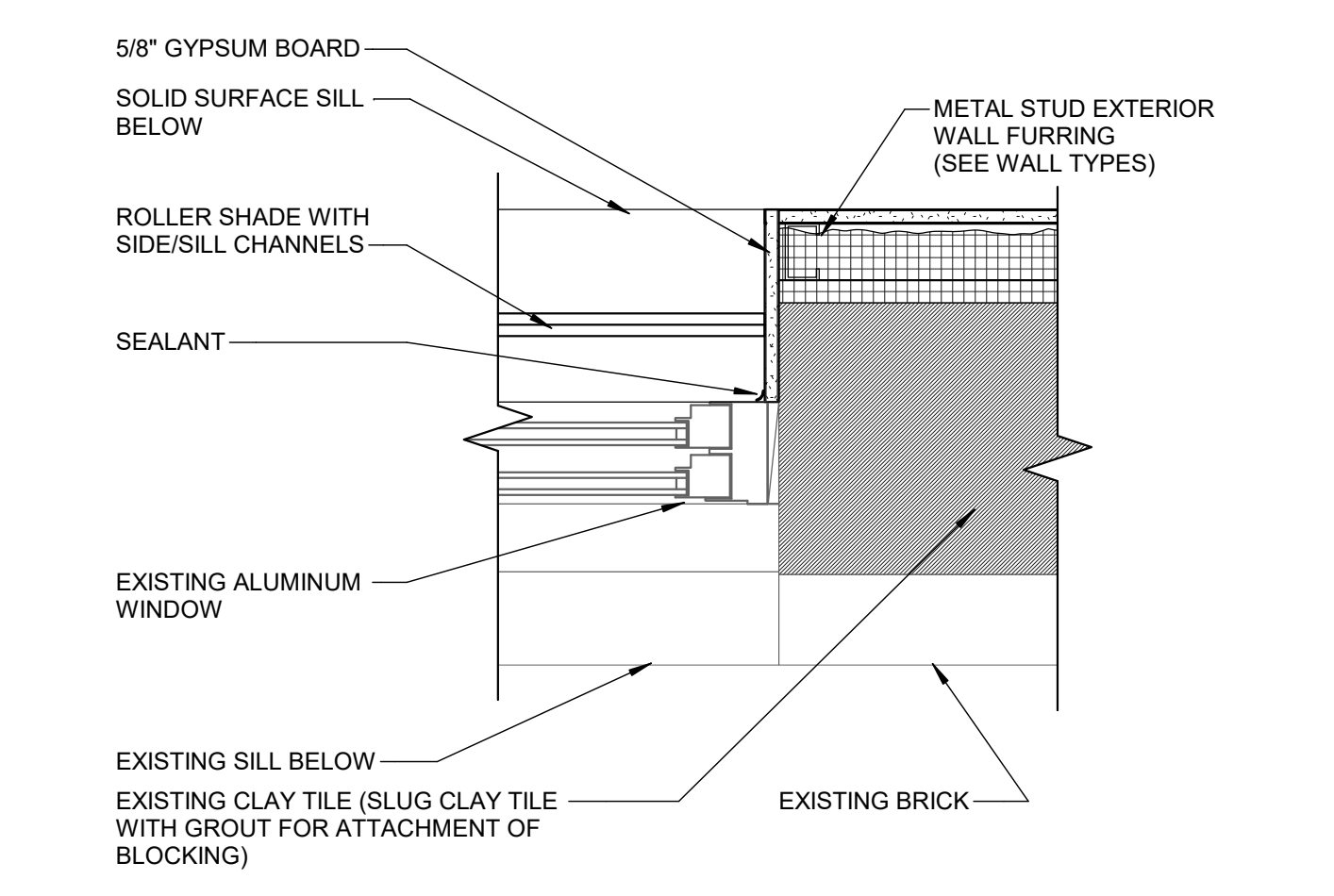
HEAD
SCALE: 1 1/2" = 1'-0"



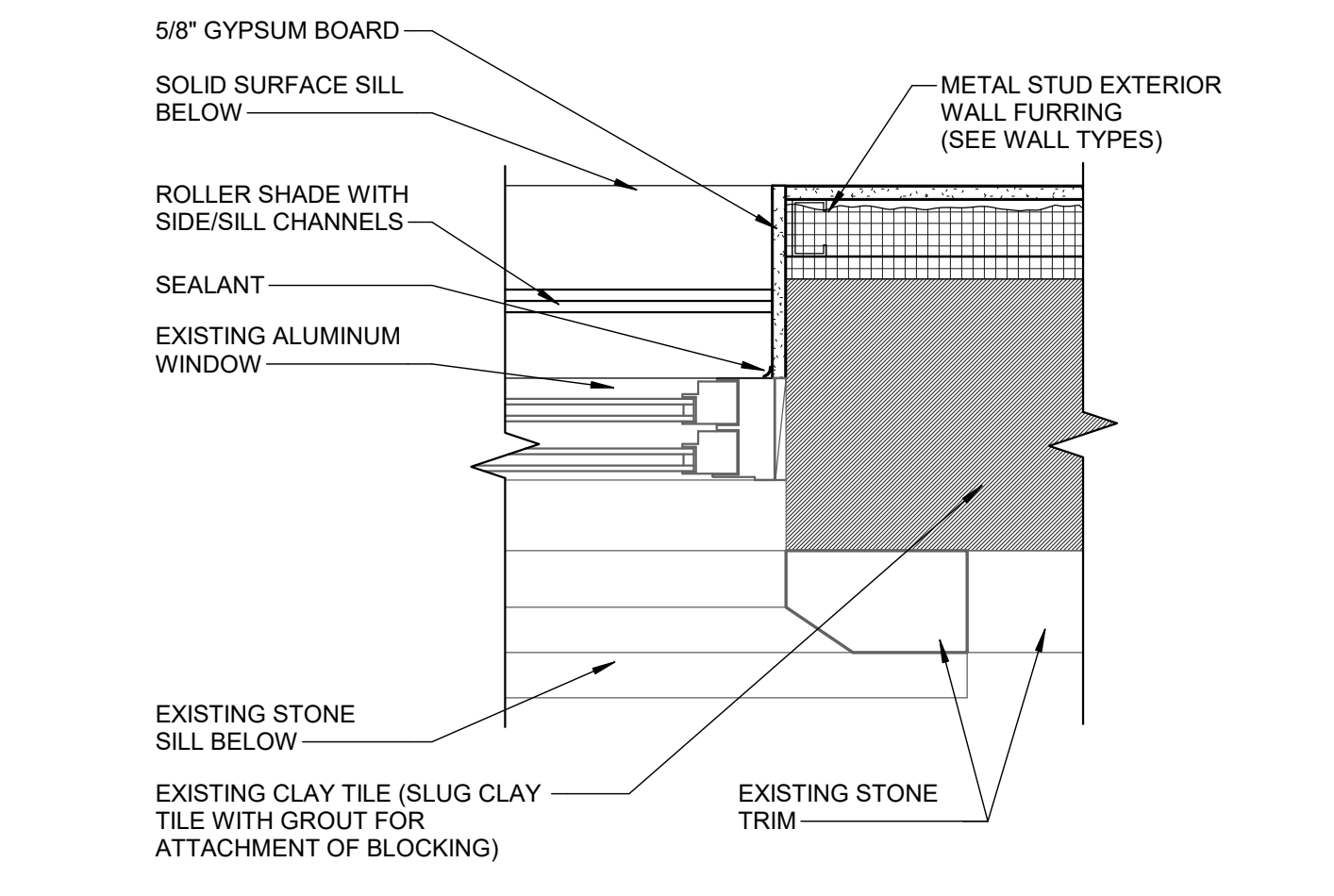
HEAD
SCALE: 1 1/2" = 1'-0"



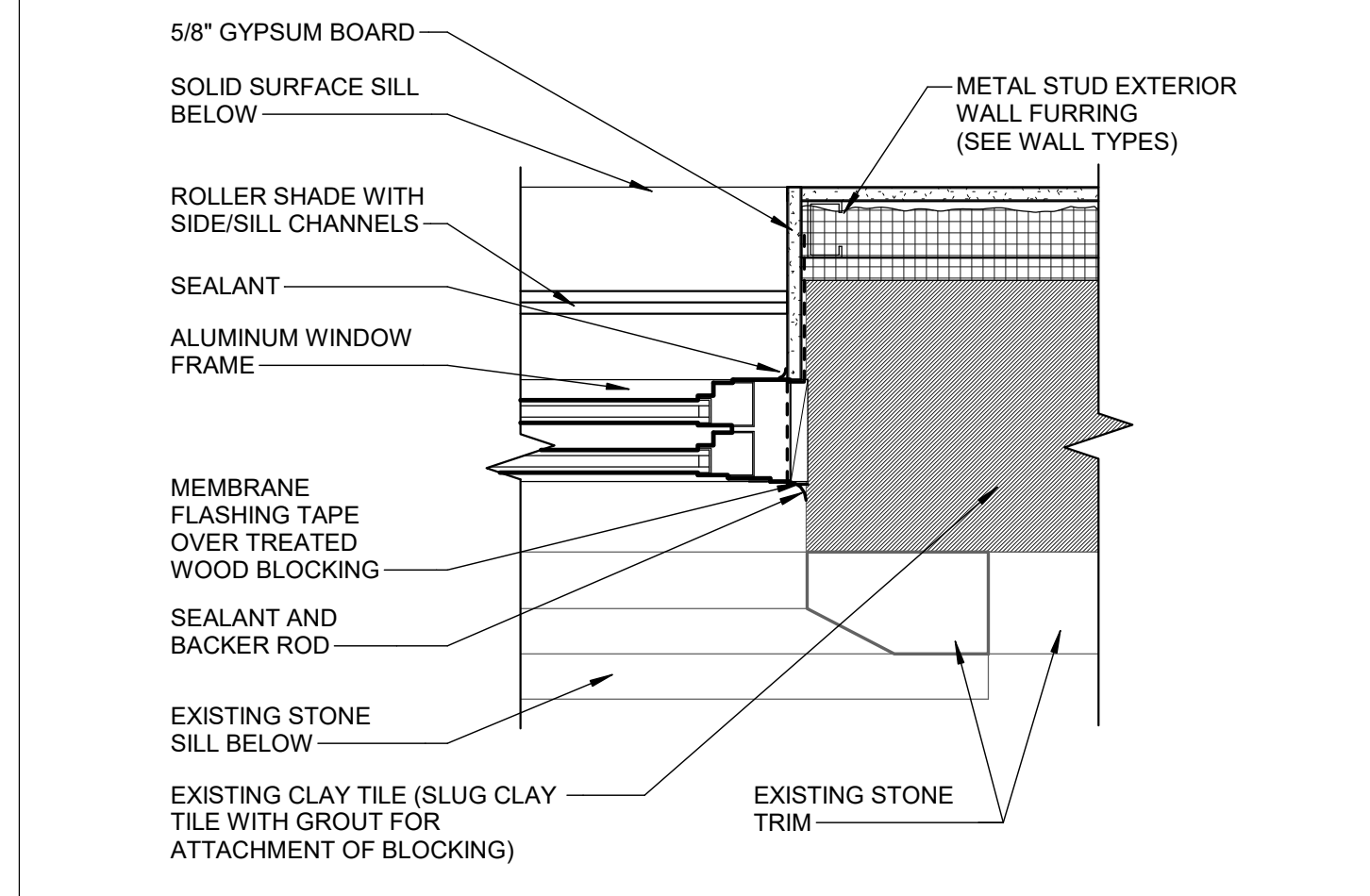
JAMB
SCALE: 1 1/2" = 1'-0"



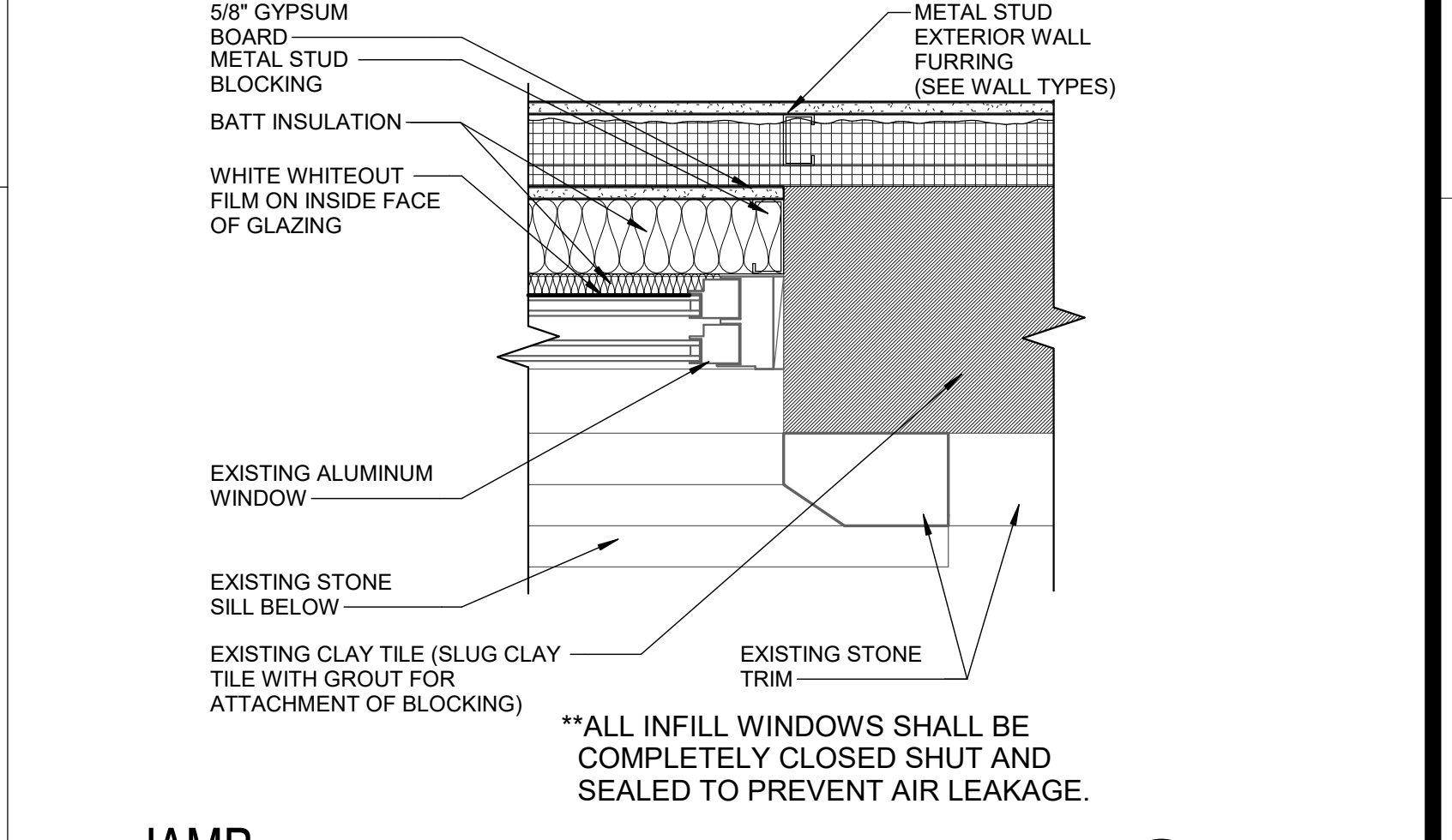
JAMB
SCALE: 1 1/2" = 1'-0"



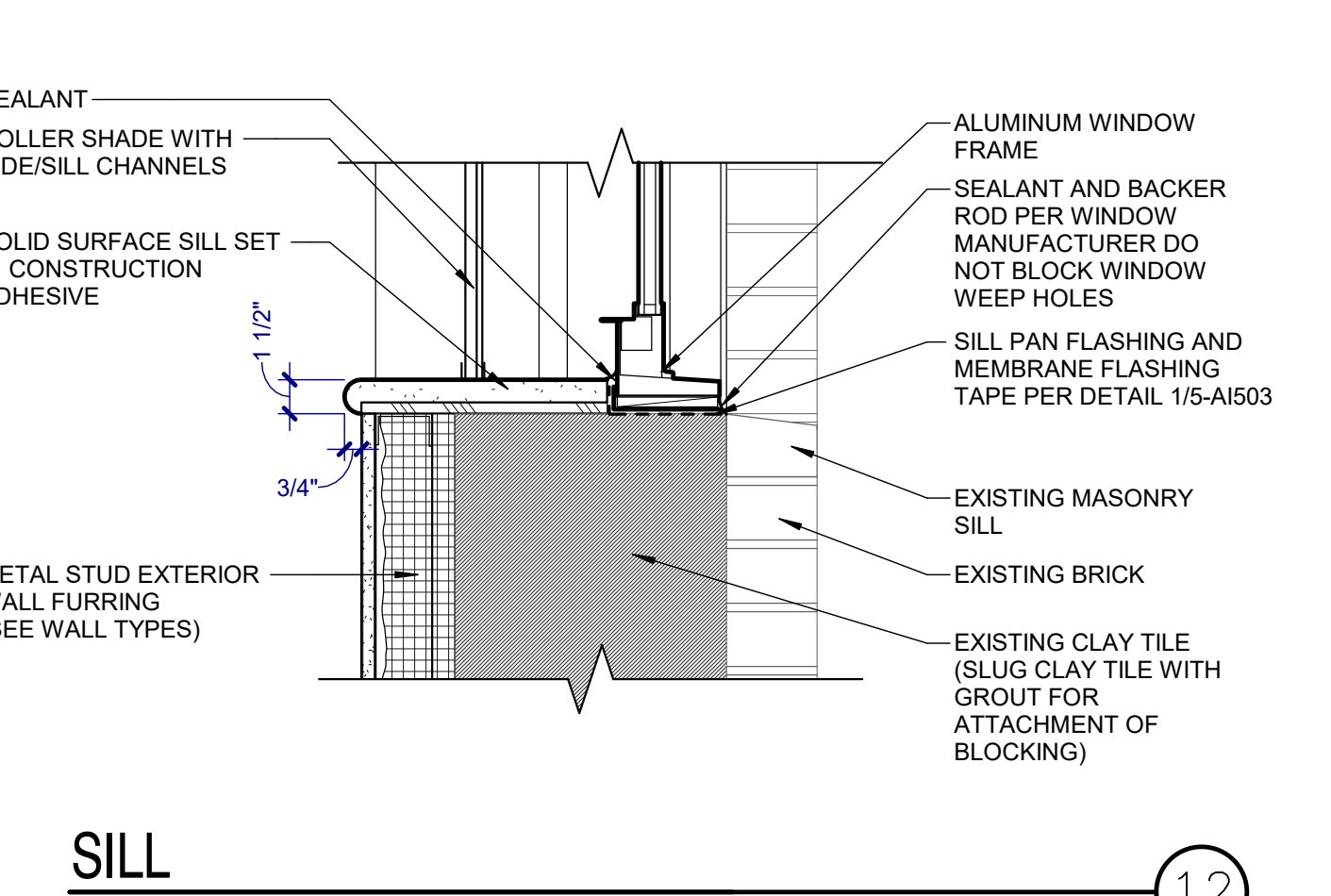
JAMB
SCALE: 1 1/2" = 1'-0"



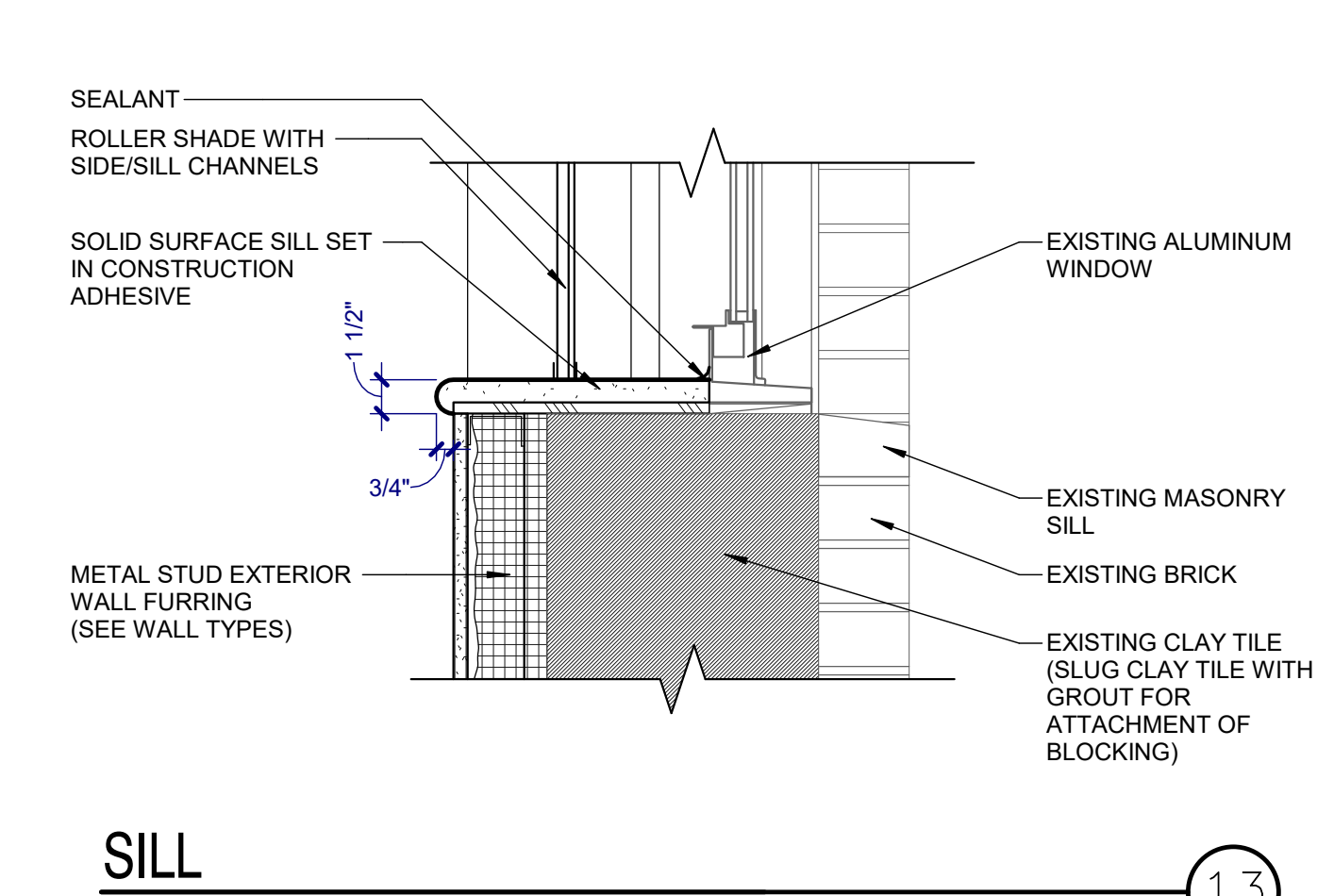
JAMB
SCALE: 1 1/2" = 1'-0"



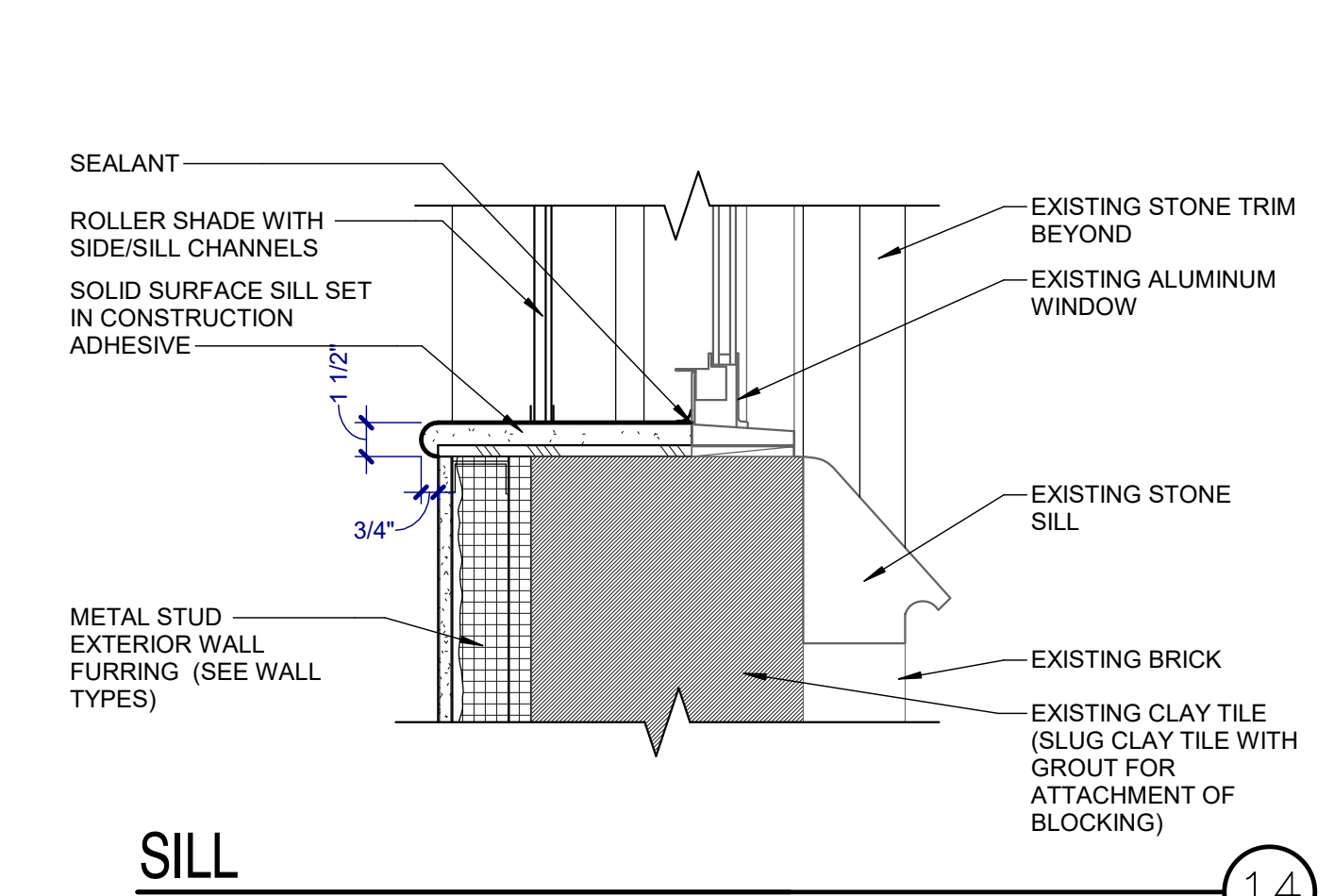
JAMB
SCALE: 1 1/2" = 1'-0"



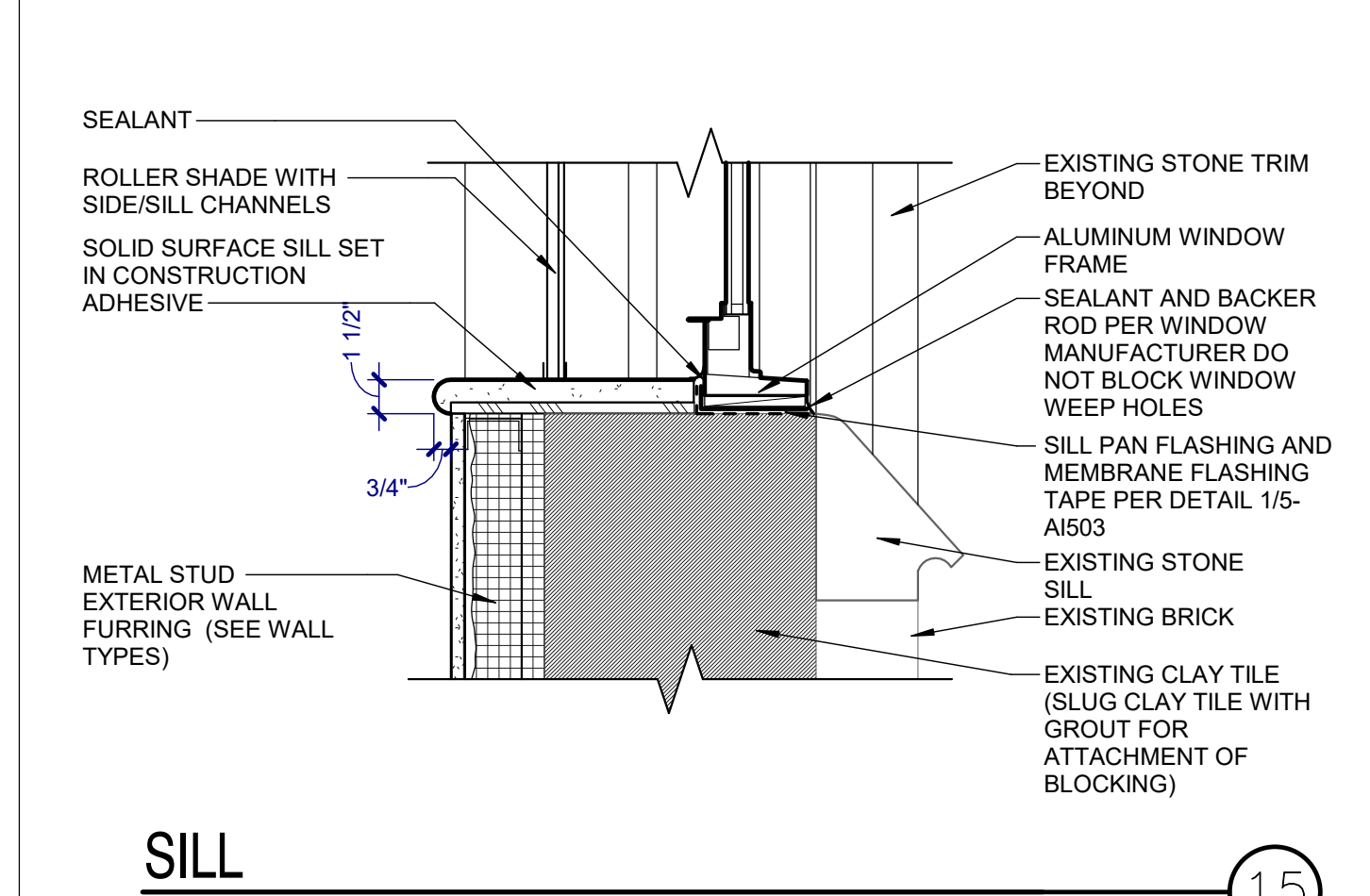
SILL
SCALE: 1 1/2" = 1'-0"



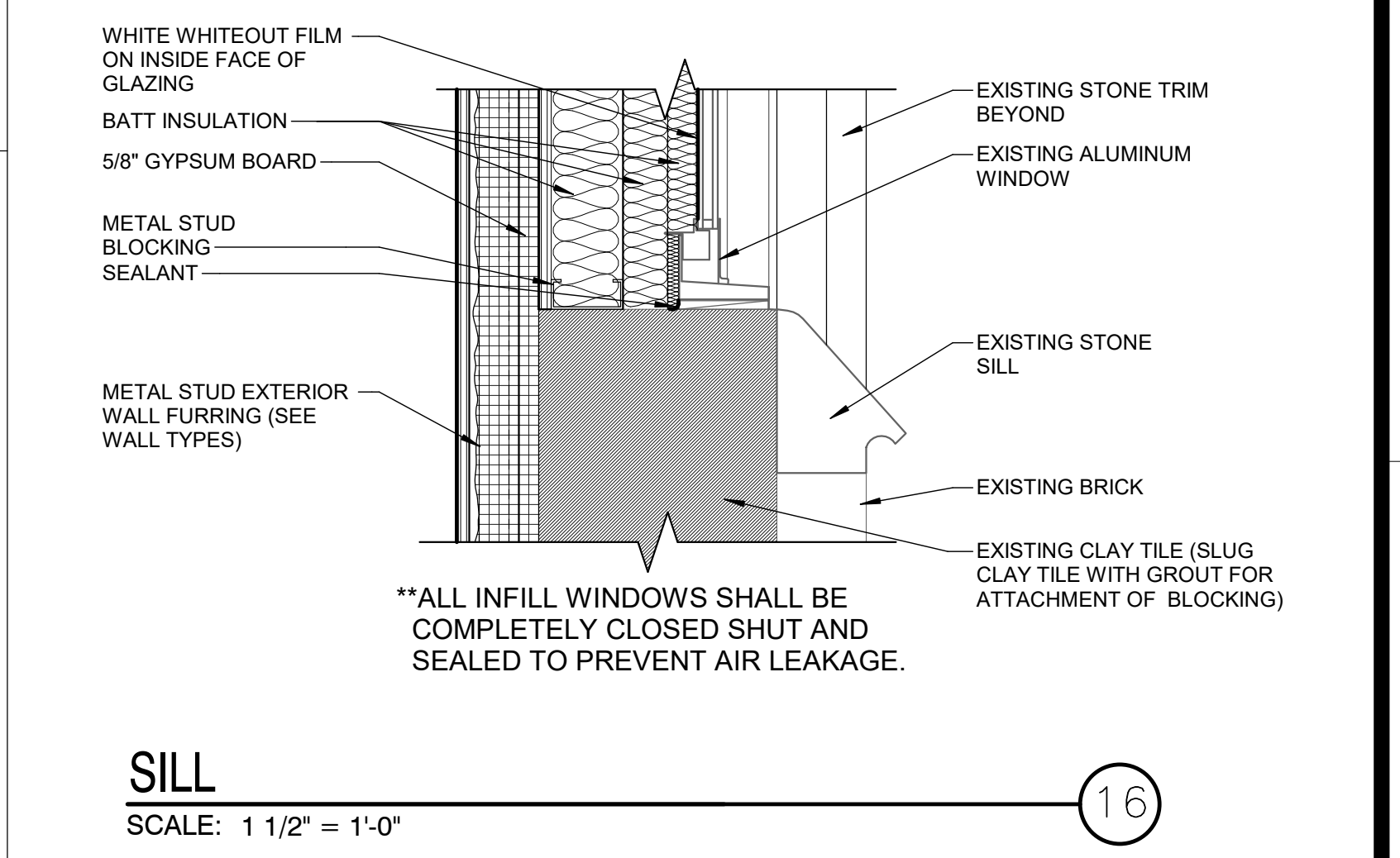
SILL
SCALE: 1 1/2" = 1'-0"



SILL
SCALE: 1 1/2" = 1'-0"



SILL
SCALE: 1 1/2" = 1'-0"



SILL
SCALE: 1 1/2" = 1'-0"

100% CONSTRUCTION DRAWINGS

Project Title V.A. HEALTH CARE SYSTEM RENOVATE 5TH FLOOR SURGERY	Project Number 438-15-201	Office of Construction and Facilities Management
Building Number 5	Drawing Number 5-AI503	
Location SIoux FALLS, SOUTH DAKOTA	Date OCTOBER 11, 2017	Department of Veterans Affairs
Checked DGS	Drawn RTG	Dwg. 18 of 60

CONSULTANTS:

WPE WEST PLAINS ENGINEERING
4609 SOUTH TECHLINK CIRCLE • SIOUX FALLS, SD 57106
PHONE: (605) 362-3753 • FAX: (605) 362-3759
RAPID CITY, SD • SIOUX FALLS, SD • CASPER, WY • CEDAR RAPIDS, IA • BISMARCK, ND

RISE STRUCTURAL ASSOCIATES INC.
101 Railroad Ave., PO Box 39
Harrisburg, SD 57032
(605) 743-2510
fax: (605) 743-2513

SEAL:

REGISTERED ARCHITECT
REG. NO. 3907
ROBIN J. MCLELLAN
SOUTH DAKOTA

ARCHITECT:

MSH ARCHITECTS
625 S. MINNESOTA AVENUE, SUITE 204
SIOUX FALLS, SOUTH DAKOTA 57104-4873
TELE: (605) 332-7850 FAX: (605) 332-3539

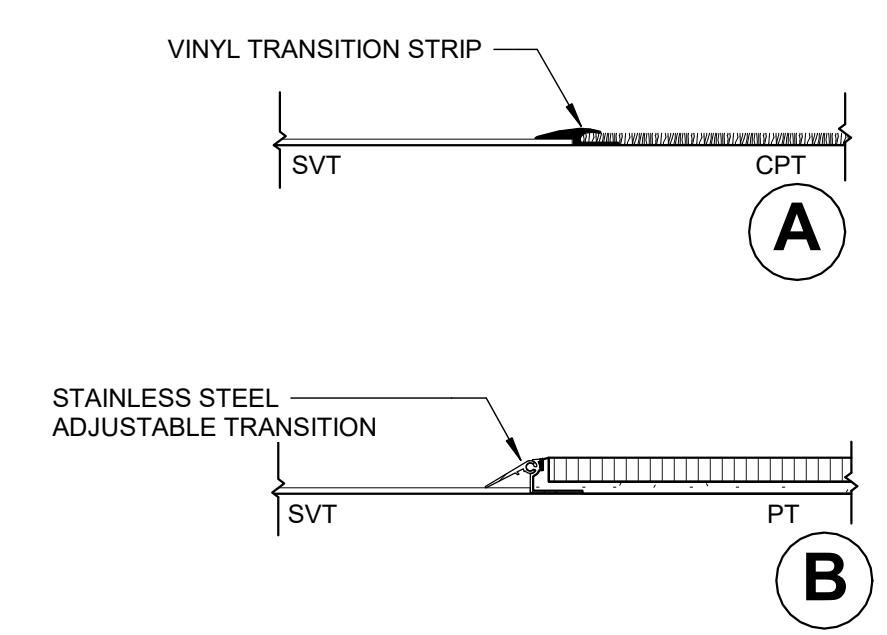
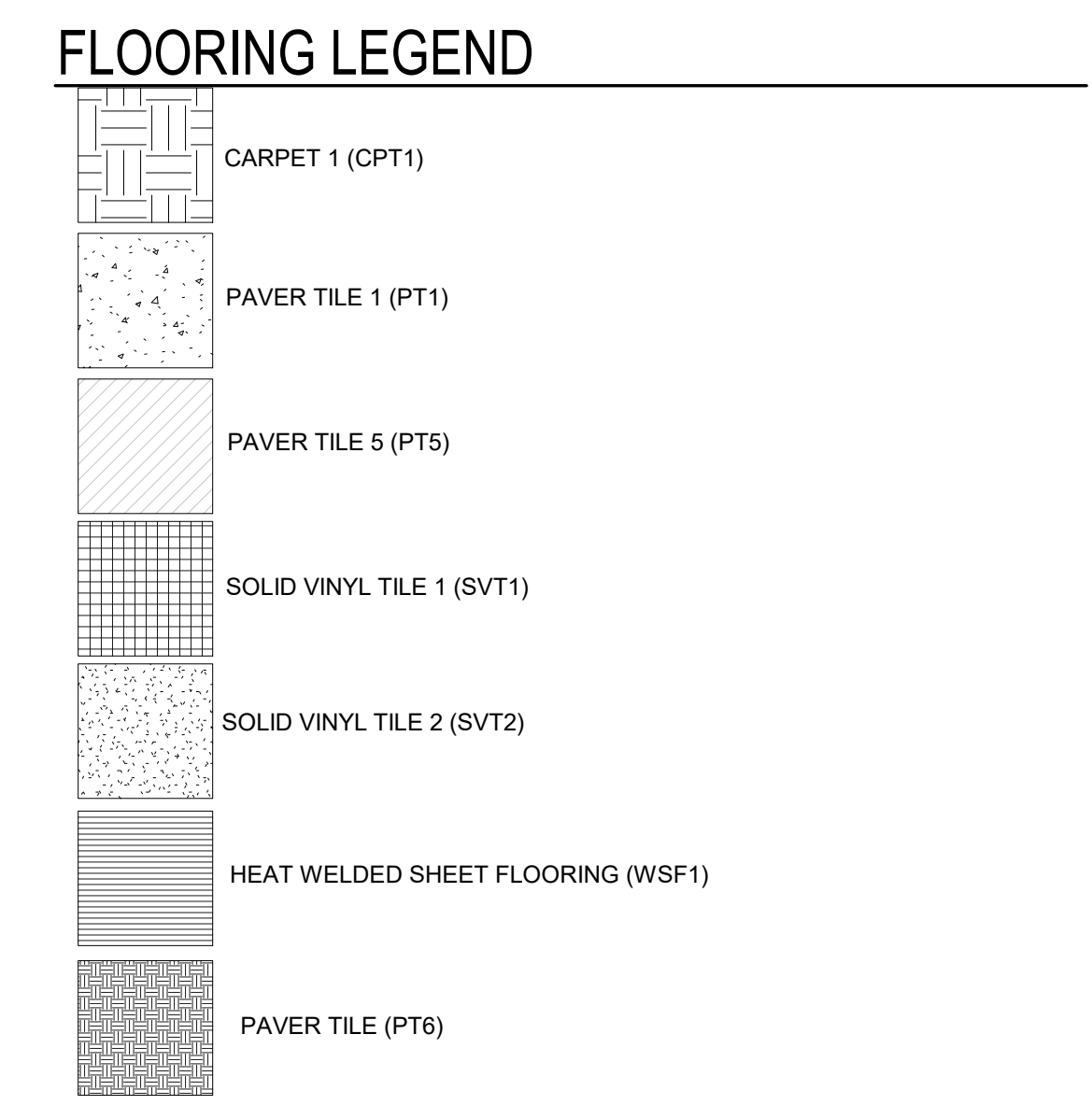
Drawing Title
WINDOW FRAME ELEVATIONS AND DETAILS

Approved: Project Director

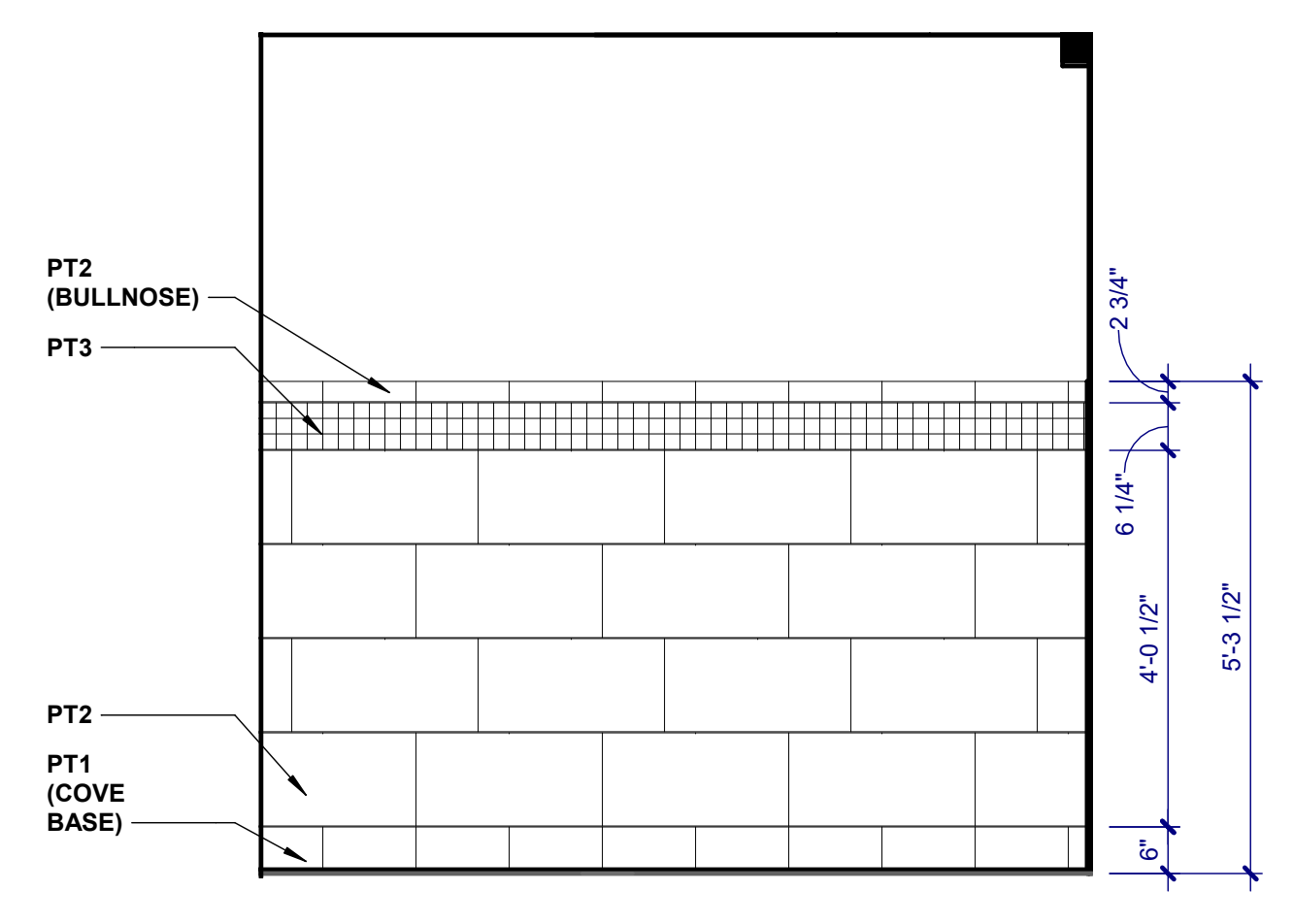
Scale bars for various units: 1/2" = 1'-0", 1" = 1'-0", 1/4" = 1'-0", 1/8" = 1'-0", 1/16" = 1'-0", 1/32" = 1'-0", 1/64" = 1'-0", 1/128" = 1'-0", 1/256" = 1'-0", 1/512" = 1'-0", 1/1024" = 1'-0", 1/2048" = 1'-0", 1/4096" = 1'-0", 1/8192" = 1'-0", 1/16384" = 1'-0", 1/32768" = 1'-0", 1/65536" = 1'-0", 1/131072" = 1'-0", 1/262144" = 1'-0", 1/524288" = 1'-0", 1/1048576" = 1'-0", 1/2097152" = 1'-0", 1/4194304" = 1'-0", 1/8388608" = 1'-0", 1/16777216" = 1'-0", 1/33554432" = 1'-0", 1/67108864" = 1'-0", 1/134217728" = 1'-0", 1/268435456" = 1'-0", 1/536870912" = 1'-0", 1/1073741824" = 1'-0", 1/2147483648" = 1'-0", 1/4294967296" = 1'-0", 1/8589934592" = 1'-0", 1/17179869184" = 1'-0", 1/34359738368" = 1'-0", 1/68719476736" = 1'-0", 1/137438953472" = 1'-0", 1/274877906944" = 1'-0", 1/549755813888" = 1'-0", 1/1099511627776" = 1'-0", 1/2199023255552" = 1'-0", 1/4398046511104" = 1'-0", 1/8796093022208" = 1'-0", 1/17592186044416" = 1'-0", 1/35184372088832" = 1'-0", 1/70368744177664" = 1'-0", 1/140737488355328" = 1'-0", 1/281474976710656" = 1'-0", 1/562949953421312" = 1'-0", 1/1125899906842624" = 1'-0", 1/2251799813685248" = 1'-0", 1/4503599627370496" = 1'-0", 1/9007199254740992" = 1'-0", 1/18014398509481984" = 1'-0", 1/36028797018963968" = 1'-0", 1/72057594037927936" = 1'-0", 1/144115188075855872" = 1'-0", 1/288230376151711744" = 1'-0", 1/576460752303423488" = 1'-0", 1/1152921504606846976" = 1'-0", 1/2305843009213693952" = 1'-0", 1/4611686018427387904" = 1'-0", 1/9223372036854775808" = 1'-0", 1/18446744073709551616" = 1'-0", 1/36893488147419103232" = 1'-0", 1/73786976294838206464" = 1'-0", 1/147573952589676412928" = 1'-0", 1/295147905179352825856" = 1'-0", 1/590295810358705651712" = 1'-0", 1/1180591620717411303424" = 1'-0", 1/2361183241434822606848" = 1'-0", 1/4722366482869645213696" = 1'-0", 1/9444732965739290427392" = 1'-0", 1/18889465931478580854784" = 1'-0", 1/37778931862957161709568" = 1'-0", 1/75557863725914323419136" = 1'-0", 1/151115727451828646838272" = 1'-0", 1/302231454903657293676544" = 1'-0", 1/604462909807314587353088" = 1'-0", 1/1208925819614629174706176" = 1'-0", 1/2417851639229258349412352" = 1'-0", 1/4835703278458516698824704" = 1'-0", 1/9671406556917033397649408" = 1'-0", 1/19342813113834066795298816" = 1'-0", 1/38685626227668133590597632" = 1'-0", 1/77371252455336267181195264" = 1'-0", 1/154742504910672534362390528" = 1'-0", 1/309485009821345068724781056" = 1'-0", 1/618970019642690137449562112" = 1'-0", 1/1237940039285380274899124224" = 1'-0", 1/2475880078570760549798248448" = 1'-0", 1/4951760157141521099596496896" = 1'-0", 1/9903520314283042199192993792" = 1'-0", 1/19807040628566084398385987584" = 1'-0", 1/39614081257132168796771975168" = 1'-0", 1/79228162514264337593543950336" = 1'-0", 1/158456325028528675187087900672" = 1'-0", 1/316912650057057350374175801344" = 1'-0", 1/633825300114114700748351602688" = 1'-0", 1/1267650600228229401496703205376" = 1'-0", 1/2535301200456458802993406410752" = 1'-0", 1/5070602400912917605986812821504" = 1'-0", 1/10141204801825835211973625643008" = 1'-0", 1/20282409603651670423947251286016" = 1'-0", 1/40564819207303340847894502572032" = 1'-0", 1/81129638414606681695789005144064" = 1'-0", 1/162259276829213363391578010288128" = 1'-0", 1/324518553658426726783156020576256" = 1'-0", 1/649037107316853453566312041152512" = 1'-0", 1/1298074214633706907132624082305024" = 1'-0", 1/2596148429267413814265248164610048" = 1'-0", 1/5192296858534827628530496329220096" = 1'-0", 1/10384593717069655257060992658440192" = 1'-0", 1/20769187434139310514121985316880384" = 1'-0", 1/41538374868278621028243970633760768" = 1'-0", 1/83076749736557242056487941267521536" = 1'-0", 1/166153499473114484112975882535042672" = 1'-0", 1/332306998946228968225951751070085344" = 1'-0", 1/664613997892457936451903502140170688" = 1'-0", 1/132922799578491587290380700428341376" = 1'-0", 1/265845599156983174580761400856682752" = 1'-0", 1/531691198313966349161522801713365504" = 1'-0", 1/1063382396627932698323045603426731008" = 1'-0", 1/2126764793255865396646091206853462016" = 1'-0", 1/4253529586511730793292182413706924032" = 1'-0", 1/8507059173023461586584364827413848064" = 1'-0", 1/17014118346046923173168729654827696128" = 1'-0", 1/34028236692093846346337459309655392256" = 1'-0", 1/68056473384187692692674918619310784512" = 1'-0", 1/1361129467683753853853498372386215681024" = 1'-0", 1/272225893536750770770699674477243124224" = 1'-0", 1/544451787073501541541399348954486248448" = 1'-0", 1/1088903574147003083082798697908972496896" = 1'-0", 1/2177807148294006166165597395817944993792" = 1'-0", 1/4355614296588012332331194791635889987584" = 1'-0", 1/8711228593176024664662389583271779975168" = 1'-0", 1/1742245718635204932932477916653559950336" = 1'-0", 1/3484491437270409865864955833307119900672" = 1'-0", 1/6968982874540819731729911666614238401344" = 1'-0", 1/13937965749081639463459823333228482688" = 1'-0", 1/27875931498163278926919646666456965376" = 1'-0", 1/55751862996326557853839293332913930752" = 1'-0", 1/111503725992653115707678586665827861504" = 1'-0", 1/223007451985306231415357173331655723008" = 1'-0", 1/44601490397061246283071434666331146016" = 1'-0", 1/89202980794122492566142869332662292032" = 1'-0", 1/178405961588244985132285738665324584064" = 1'-0", 1/356811923176489970264571477330649168128" = 1'-0", 1/713623846352979940529142954661292336256" = 1'-0", 1/1427247692705959881058285909322584672512" = 1'-0", 1/2854495385411919762116571818645169345024" = 1'-0", 1/5708990770823839524233143637290338690048" = 1'-0", 1/1141798154164767904846628727458067380096" = 1'-0", 1/2283596308329535809693257454916134760192" = 1'-0", 1/4567192616659071619386514909832269520384" = 1'-0", 1/9134385233318143238773029819664539040768" = 1'-0", 1/18268770466636286477546058639329078081536" = 1'-0", 1/3653754093327257295509211727865815615072" = 1'-0", 1/7307508186654514591018423455731631230144" = 1'-0", 1/14615016373309029182036846911463262460288" = 1'-0", 1/29230032746618058364073693822926524920576" = 1'-0", 1/58460065493236116728147387645853049841152" = 1'-0", 1/116920130986472233456294775291706099682304" = 1'-0", 1/233840261972944466912589550583412199364608" = 1'-0", 1/467680523945888933825179101166824398729216" = 1'-0", 1/935361047891777867650358202333648797458432" = 1'-0", 1/18707220957835557353007164046673749949168" = 1'-0", 1/37414441915671114706014328093347499898336" = 1'-0", 1/74828883831342229412028656186694999796672" = 1'-0", 1/149657767662684458824057313773389999593344" = 1'-0", 1/299315535325368917648114627556779999186688" = 1'-0", 1/598631070650737835296229255113559998373376" = 1'-0", 1/1197262141301475670592458510227199996746752" = 1'-0", 1/2394524282602951341184917020454399993493504" = 1'-0", 1/4789048565205902682369834040908799986987008" = 1'-0", 1/9578097130411805364739668081817599973974016" = 1'-0", 1/1915619426082361072947933676363519987794832" = 1'-0", 1/3831238852164722145895867352727039975589664" = 1'-0", 1/7662477704329444291791734705454079951179328" = 1'-0", 1/1532495540865888858358346941088815990235856" = 1'-0", 1/3064991081731777716716693882177631980471712" = 1'-0", 1/6129982163463555433433387764355263960943424" = 1'-0", 1/12259964326927110866866775328710527921886848" = 1'-0", 1/2451992865385422173373355065742105584377376" = 1'-0", 1/4903985730770844346746710131484211168754752" = 1'-0", 1/980797146154168869349342026296842233750944" = 1'-0", 1/1961594292288337738698684052593684475401888" = 1'-0", 1/3923188584576675477397368105187368950803776" = 1'-0", 1/7846377169153350954794736210374737901607552" = 1'-0", 1/1569275433830670190958947242074947580321504" = 1'-0", 1/3138550867661340381917894484149895160643008" = 1'-0", 1/6277101735322680763835788968299790321281016" = 1'-0", 1/12554203470645361527671577936599580642562032" = 1'-0", 1/25108406941290723055343155873199161285124064" = 1'-0", 1/50216813882581446110686311746398322560248128" = 1'-0", 1/10043362776516289222137262349278645120485152" = 1'-0", 1/2008672555303257844427452469855729024097024" = 1'-0", 1/4017345110606515688854904939711458048194048" = 1'-0", 1/8034690221213031377709809879422916096088096" = 1'-0", 1/16069380442426062755419619758845832192177152" = 1'-0", 1/3213876088485212551083923951769166438435424" = 1'-0", 1/642775217697042510216784790353833287680848" = 1'-0", 1/1285550435394085020433569580707666575361696" = 1'-0", 1/2571100870788170040867139161415333150723392" = 1'-0", 1/5142201741576340081734278322830666301446784" = 1'-0", 1/1028440348315268016346855644566133260289568" = 1'-0", 1/2056880696630536032693711289132266520579136" = 1'-0", 1/4113761393261072065387422578264533041158272" = 1'-0", 1/8227522786522144130774845156529066082316448" = 1'-0", 1/1645504557304428826154969031305813216463296" = 1'-0", 1/3291009114608857652309938062611626432926592" = 1'-0", 1/6582018229217715304619876125223252865531184" = 1'-0", 1/1316403645843543060923975225044650573106272" = 1'-0", 1/2632807291687086121847950450089301146212544" = 1'-0", 1/5265614583374172243695900900178602292425088" = 1'-0", 1/10531229166743544487391801800357204584850176" = 1'-0", 1/2106245833348708897478360360071440916970032" = 1'-0", 1/4212491666697417794956720720142881839940064

three inches = one foot
 one and one half inches = one foot
 one inch = one foot
 three quarters inch = one foot
 one half inch = one foot
 three eighths inch = one foot
 one quarter inch = one foot
 one eighth inch = one foot
 one sixteenth inch = one foot

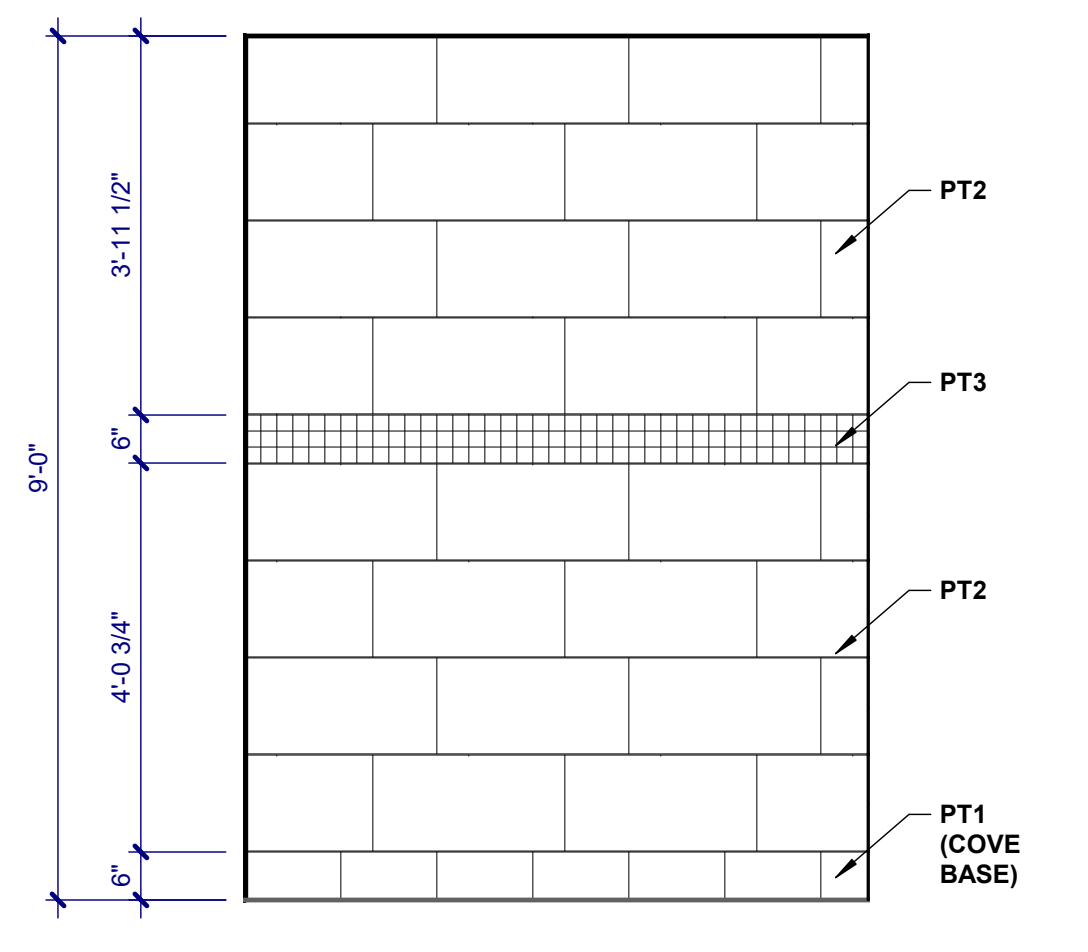
- KEYNOTES:**
- 1 FLOORING TRANSITION (SEE TYPICAL DETAILS)
 - 2 VINYL TREADS (13) AND RISERS (14) INSTALLED ON EXISTING METAL TREADS.
 - 3 VINYL NOSING



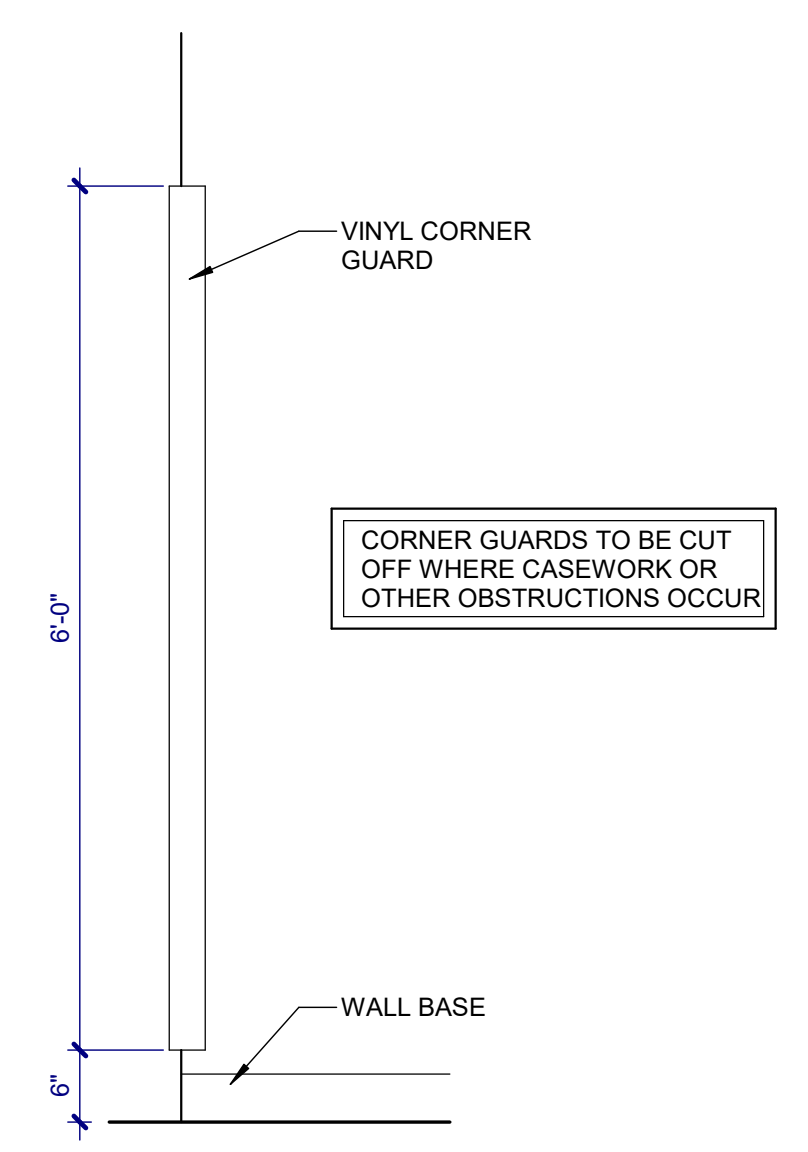
TYPICAL FLOORING TRANSITIONS
 SCALE: 3" = 1'-0"



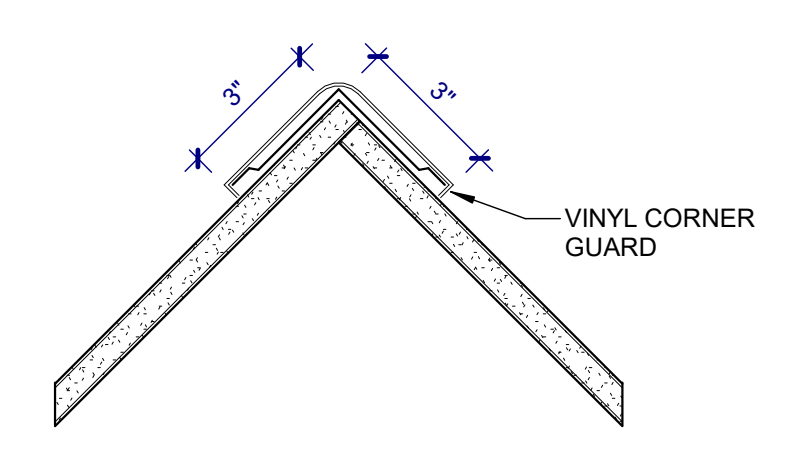
TYPICAL TOILET ROOM WALL TILE
 SCALE: 1/2" = 1'-0"



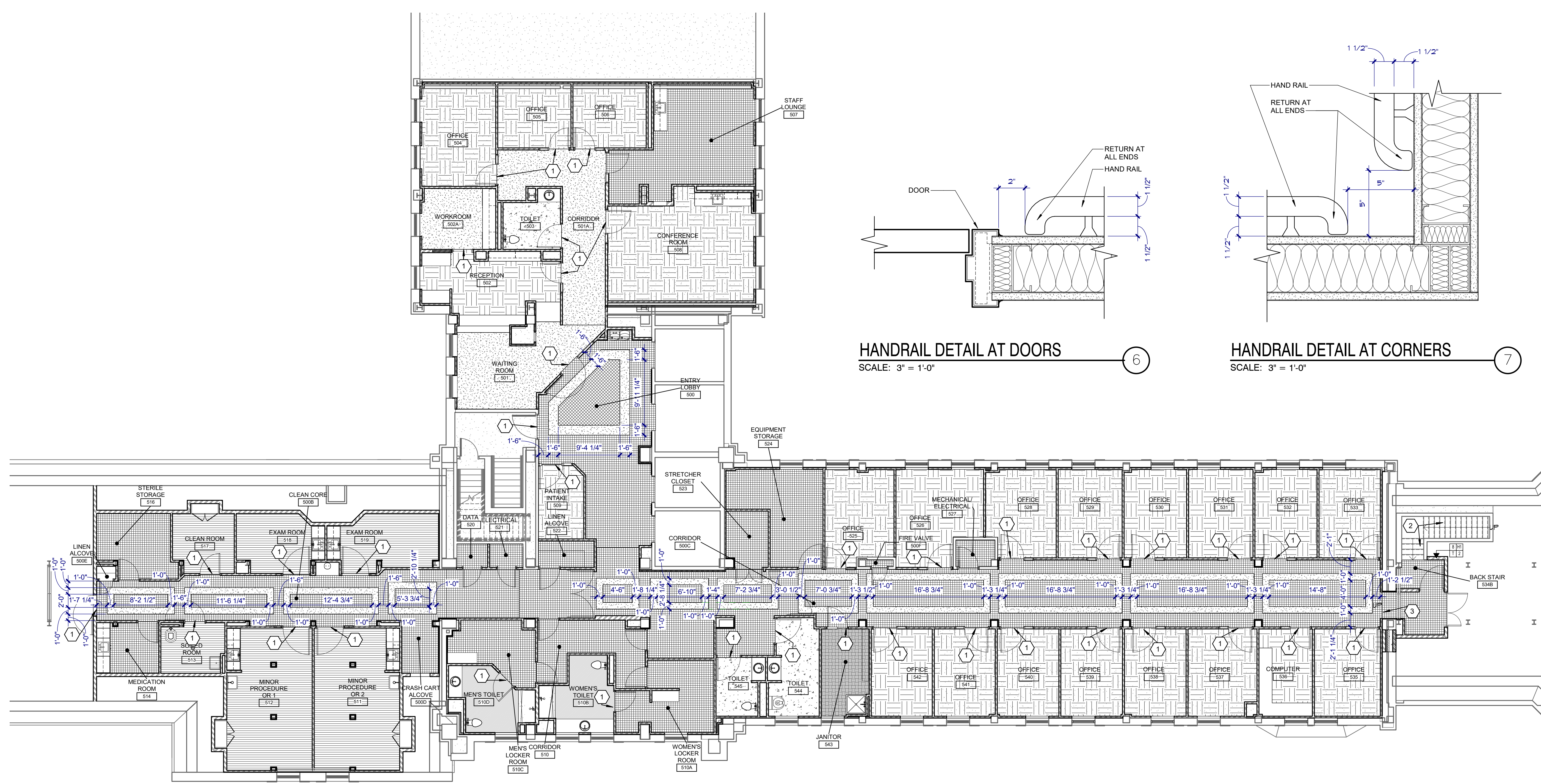
TYPICAL WALL TILE
 SCALE: 1/2" = 1'-0"



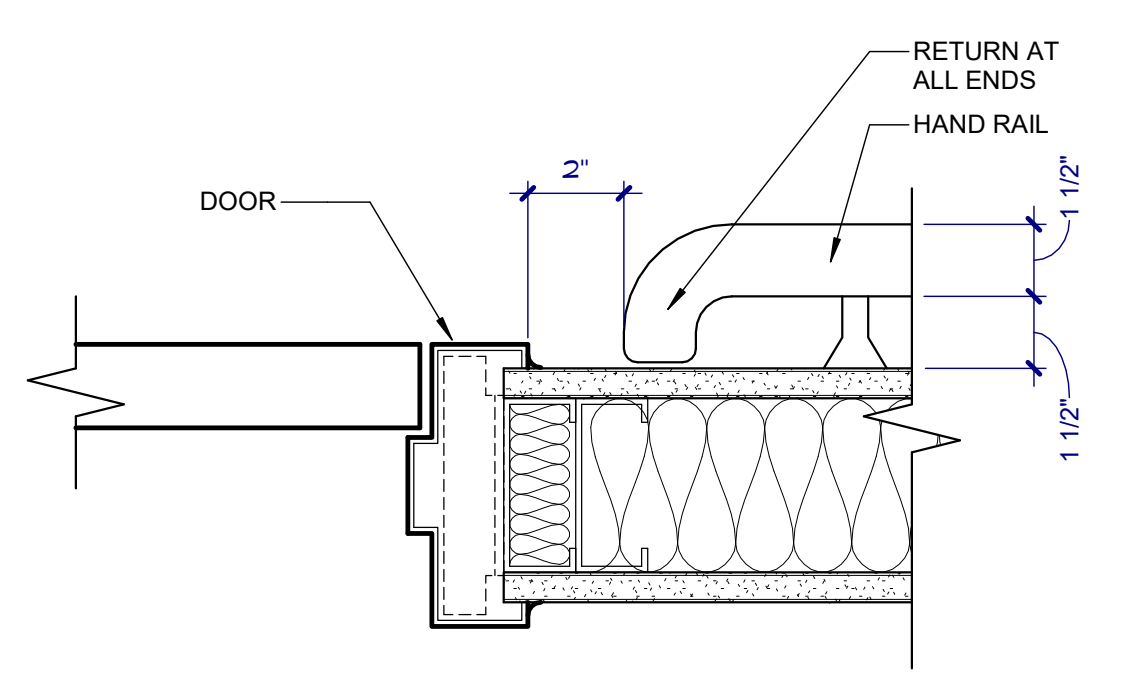
TYPICAL CORNER GUARD ELEVATION
 SCALE: 3/4" = 1'-0"



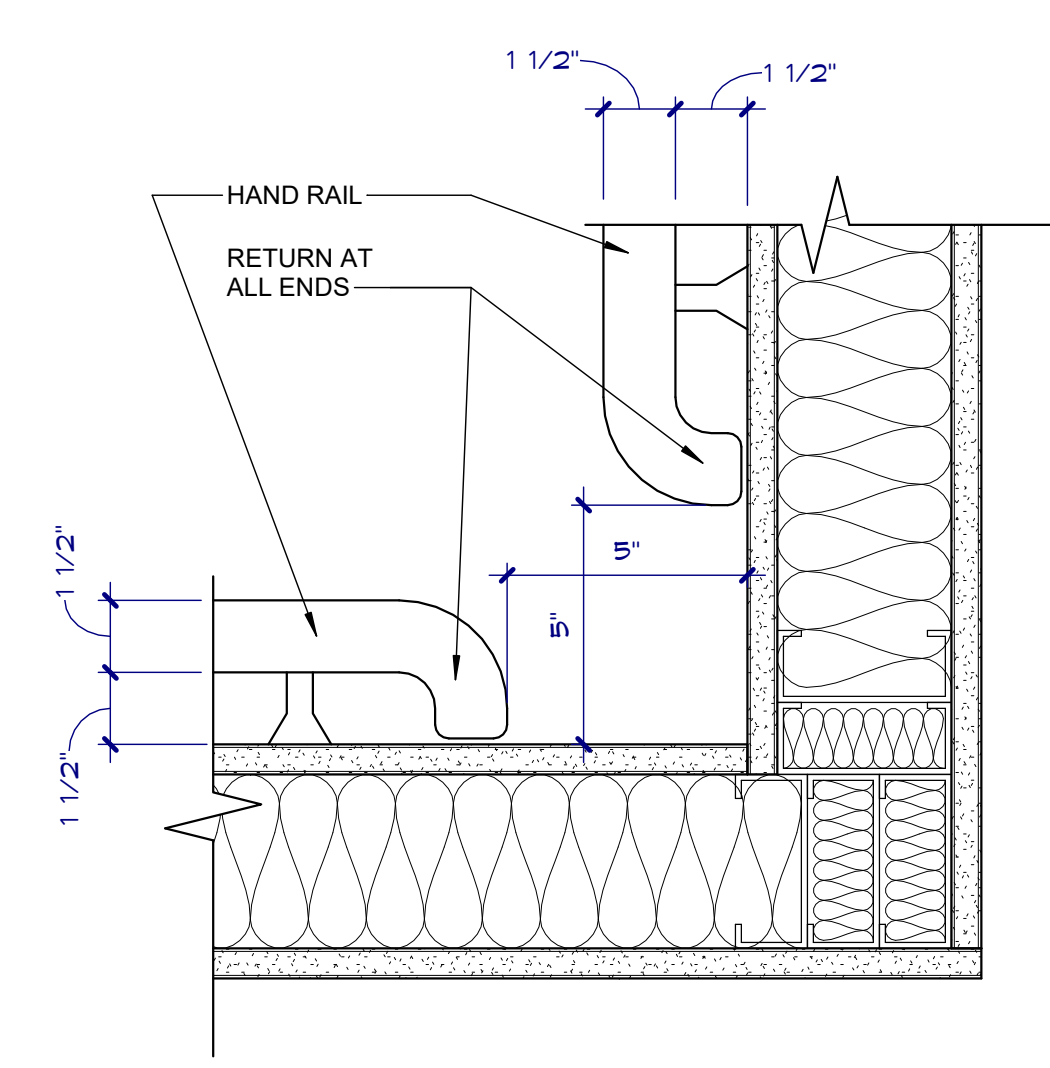
TYPICAL CORNER GUARD DETAIL
 SCALE: 3" = 1'-0"



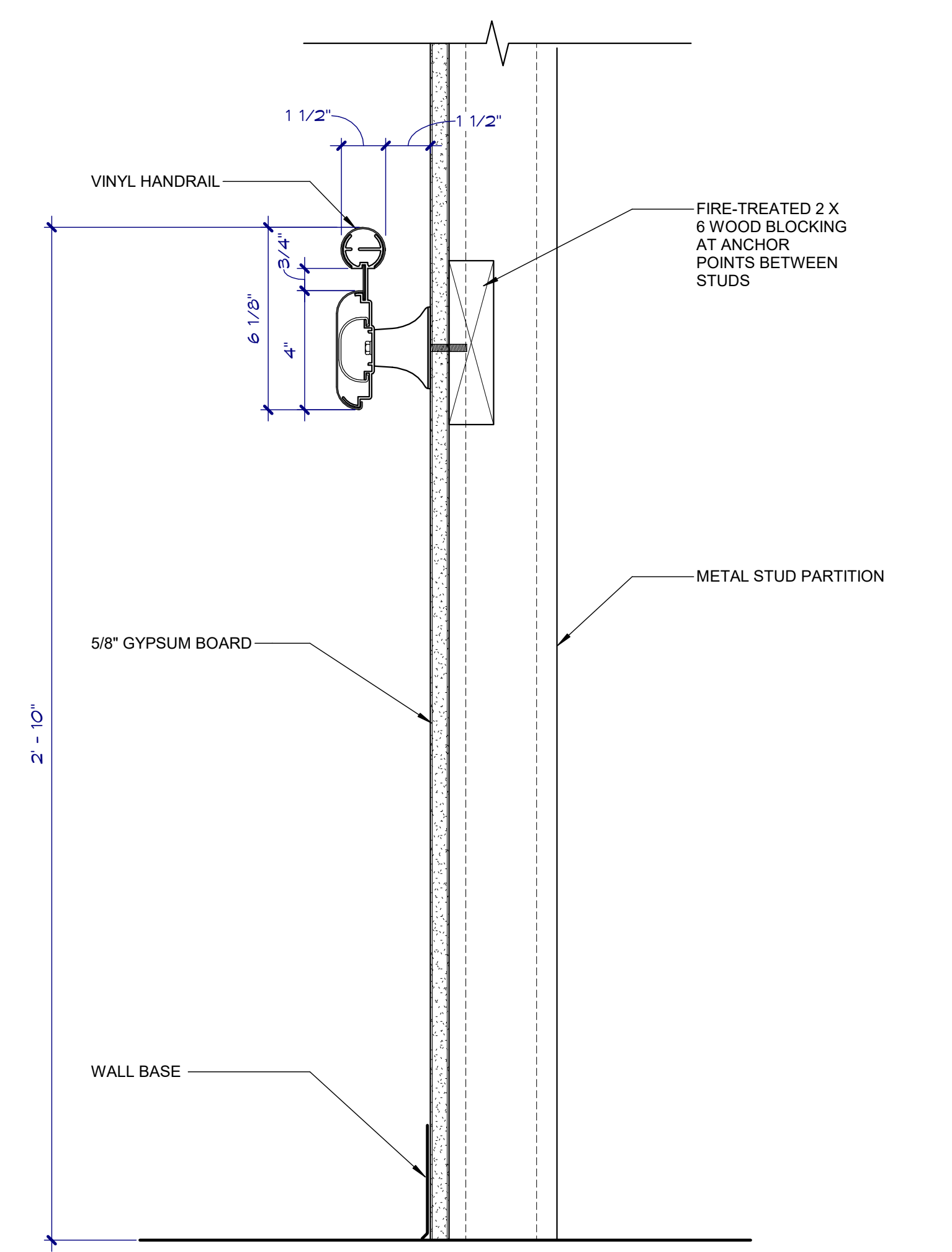
FINISH FLOOR PLAN
 SCALE: 1/8" = 1'-0"



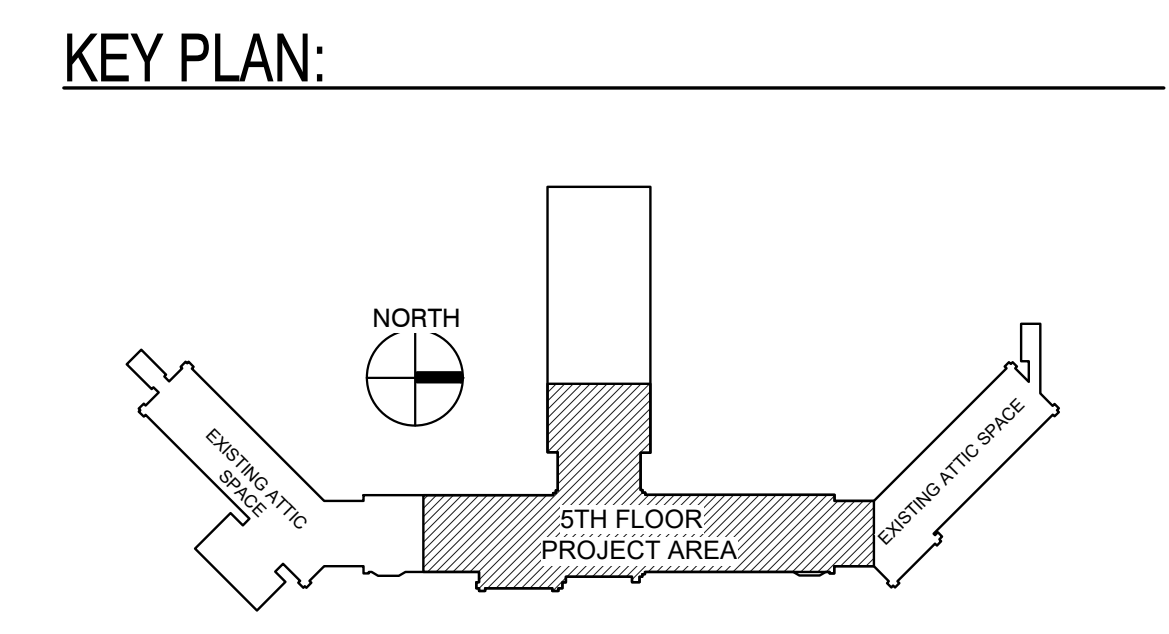
HANDRAIL DETAIL AT DOORS
 SCALE: 3" = 1'-0"



HANDRAIL DETAIL AT CORNERS
 SCALE: 3" = 1'-0"



TYPICAL HANDRAIL DETAIL
 SCALE: 3" = 1'-0"



100% CONSTRUCTION DRAWINGS

Project Title V.A. HEALTH CARE SYSTEM RENOVATE 5TH FLOOR SURGERY		Project Number 438-15-201		Office of Construction and Facilities Management
Location SIoux FALLS, SOUTH DAKOTA		Building Number 5		
Date OCTOBER 11, 2017		Checked DGS	Drawn RTG	Department of Veterans Affairs
Drawing Title FIFTH FLOOR FINISH PLAN		Drawing Number 5-AF100		

Dwg. 19 of 60

CONSULTANTS: 4609 SOUTH TECHLINK CIRCLE • SIOUX FALLS, SD 57106 PHONE: (605) 362-3753 • FAX: (605) 362-3759 RAPID CITY, SD • SIOUX FALLS, SD • CASPER, WY • CEDAR RAPIDS, IA • BISMARCK, ND	SEAL: 	ARCHITECT: 625 S. MINNESOTA AVENUE, SUITE 204 SIOUX FALLS, SOUTH DAKOTA 57104-4873 TELE: (605) 332-7850 FAX: (605) 332-3539	Drawing Title FIFTH FLOOR FINISH PLAN	Project Director Approved: Project Director
--	-----------	--	---	--

FINISH MATERIAL SCHEDULE

MARK	MATERIAL	COMPONENT	MANUFACTURER	PRODUCT NAME	PRODUCT NO.	SIZE	FINISH	PATTERN	COLOR	COLOR NO.	REMARKS
AT1	ACOUSTICAL CEILING	PANELS	ARMSTRONG	CORTEGA	704A	2'x2'x5/8"		ANGLED TEGULAR	WHITE		
AT1	ACOUSTICAL CEILING	EXPOSED SUSPENSION SYSTEM	ARMSTRONG	PRELUDE		15/16"			WHITE		
AT2	ACOUSTICAL CEILING	PANELS	ARMSTRONG	ULTIMA HEALTH ZONE	1447	2'X2'X1"		BEVELED TEGULAR	WHITE		
AT2	ACOUSTICAL CEILING	EXPOSED SUSPENSION SYSTEM	ARMSTRONG	PRELUDE PLUS XL ALUMINUM		15/16"			WHITE		
CPT1	CARPET TILE		SHAW	PRAIRIE TILE 59525	23201	24" x 24"		BRICK	CHICORY 23201		
CG1	CORNER GUARD		INPRO	STYLE 150BN	0351		3", INSTALL AS INDICATED ON DRAWINGS		RIVER ROCK, VELVET FINISH		
CC1	CUBICLE CURTAIN		INPRO / ARC-COM	JULEP	AC-32886		RAILROADED, INSTALL AT 8" AFF.	WHISPER CUBE TRACK	BEACH #7		FLUSH GRID CLIP AND ALL ACCESSORIES, CE9038 CARRIER
EP1	EPOXY PAINT	MAIN	DIAMOND VOGEL		0232		SATIN/EGGSHELL		FROND		
EP2	EPOXY PAINT	CEILINGS	DIAMOND VOGEL		0023		FLAT		SHELL TINT		
FRP	FIBERGLASS REINFORCED PLASTIC	MOP SINK SURROUND	KEMILITE/GLASBOARD			4' HIGH	TOP CAP, INSIDE/OUTSIDE CORNERS		WHITE		
HR1	HANDRAIL		INPRO	STYLE 3055	0351		THUMB GRIP INSERT 5037 BRUSHED ALUMINUM		RIVER ROCK, VELVET FINISH		
L1	LOCKER	PLASTIC Z LOCKERS	SCRANTON PRODUCT	Z LOCKERS		18" X 18" X 72"	DOUBLE TIER	SLOPED TOP	TO BE SELECTED		
P1	PAINT	MAIN COLOR	DIAMOND VOGEL		0232		SATIN/EGGSHELL		FROND		
P2	PAINT	ACCENT, CONFERENCE, STAFF	DIAMOND VOGEL		0478		SATIN/EGGSHELL		SINGING IN THE SUN		
P3	PAINT	METAL DOORS AND FRAMES	DIAMOND VOGEL		0213		SATIN/EGGSHELL		COASTAL FOG		
P4	PAINT	EXAM ROOMS	DIAMOND VOGEL		0380		SATIN/EGGSHELL		MIRRORED WILLOW		
P5	PAINT	CEILINGS	DIAMOND VOGEL		0023		FLAT		SHELL TINT		
P6	PAINT	SOFFITS / BULKHEADS	DIAMOND VOGEL		0231		FLAT		DESERT MIRAGE		
PLAM1	PLASTIC LAMINATE	VERTICAL SURFACES	WILSONART		7935-07				SHAKER CHERRY		
PLAM1A	PLASTIC LAMINATE	VERTICAL SURFACES ACCENT	WILSONART		7953-38				HARVEST MAPLE		
PLAM2	PLASTIC LAMINATE	COUNTERTOPS	WILSONART		4872-60				WESTERN STORM		
PT1	PORCELAIN TILE	FLOOR TILE	CERAMIC TILE WORKS: IRIS	MATRIX		12 X 24 X 1/8" JT.	GROUT: EPOXY, TEC SABLE	1/3 ASHLAR BRICK	TAUPE BLEND		RUN TILE SAME DIRECTION, BASE: 6" X 12" COVE
PT2	PORCELAIN TILE	WALL TILE	CERAMIC TILE WORKS: IRIS	MATRIX		12 X 24 X 1/8" JT.	GROUT: EPOXY, TEC LIGHT SMOKE	1/3 ASHLAR BRICK	CLASSIC TAN		RUN TILE SAME DIRECTION, 3" X 24" BULLNOSE TILE AT WAINSCOT
PT3	PORCELAIN TILE	WALL TILE ACCENT STRIP	CERAMIC TILE WORKS: IRIS	MATRIX		2" X 2" X 1/8" JT.	GROUT: EPOXY, TEC LIGHT SMOKE	GRID	TAUPE BLEND		RUN TILE SAME DIRECTION, SEE ELEVATIONS
PT4	PORCELAIN TILE	ACCENT WALL AT ELEVATOR LOBBY	RAGNO	CALIBRIA		MOSAIC	GROUT: EPOXY, TEC SABLE	RANDOM STRIP	AK35		
PT5	PORCELAIN TILE	SHOWER ROOM FLOOR TILE	CERAMIC TILE WORKS: IRIS	MATRIX		2" X 2" X 1/8" JT.	GROUT: EPOXY, TEC SABLE	GRID	TAUPE BLEND		RUN TILE SAME DIRECTION, BASE: 6" X 12" COVE
PT6	PORCELAIN TILE	JANITOR FLOOR	FLORIM USA	ISTONE		6" X 6" X 1/8" JT.	GROUT: EPOXY, TEC SABLE	GRID	GREY		BULLNOSE BASE 3" X 12"
RS1	ROLLER SHADE	ROLLER SHADE	HUNTER DOUGLAS	FR PREMIUM	SHEERWEAVE	1% OPENNESS	MANUAL, INSIDE MOUNT, FASCIA, TOP, BOTTOM	SHEERWEAVE	TAUPE		
RS1	ROLLER SHADE						COVERS, BLOCKOUT, FABRIC WRAPPED HEM				
RS1	ROLLER SHADE						BAR, SUN CONTROL FABRIC				
S1	SOLID SURFACE	COUNTERTOP	LG HI MACS	VENUS	T001				VENUS		
S2	SOLID SURFACE	INTEGRAL BOWL TOILET ROOMS	LG HI MACS	IVORY WHITE	S29	#1612			IVORY WHITE		
SVT1	SOLID VINYL TILE	MAIN COLOR	TANDUS CENTIVA		CMS 0618 FR	12" X 36" X 3MM	SQUARE EDGE, FROST	STAGGERED	VOLGA		
SVT2	SOLID VINYL TILE	ACCENT COLOR	TANDUS CENTIVA		CMS 0608 FR	12" X 36" X 3MM	SQUARE EDGE, FROST	STAGGERED	MOCHA		
STA	STAINLESS STEEL ACCESSORY	OUTSIDE CORNERS AT ALL TILE	SCHLUTER	ECK-E	ECK-E		STAINLESS STEEL	ALL OUTSIDE CORNERS			
TR1	TRANSITION		JOHNSONITE				VINYL		FAWN		
TRP1	TRANSLUCENT RESIN PANEL	SCREEN WALL PANEL	3 FORM	VARIA		3/8" THICK	PATINA (BOTH SIDES)	FOSSIL LEAF RANDOM			
RB1	VINYL BASE	WALL BASE	JOHNSONITE	COVE BASE	80	4", 1/8" GAUGE	VINYL		FAWN		
RTR	VINYL TREADS AND RISERS	VINYL TREADS AND RISERS	JOHNSONITE	HD SQUARE NOSE	HD	TO FIT	VINYL		FAWN		
W1	VINYL WALLCOVERING		DL COUCH, LANARK	BOARDWALK	R2-BK-13		TYPE 2, 20 OUNCE LINEAR YARD		SKEE-BALL		
WSF1	WELDED SHEET FLOORING	HEAT WELDED	MANNINGTON	BIOSPEC MD	15203	6' ROLL	2.03 MM, WELD ROD: COLOR TO MATCH		SANDRIFT LC		V95 ADHESIVE
WSFB1	WELDED SHEET FLOORING BASE	6" INTEGRAL FLASH COVERED BASE	MANNINGTON	BIOSPEC MD	15203	6' ROLL	TAPERED VINYL TRIM CAP, HEAT WELDED		SANDRIFT LC		V95 ADHESIVE
ST1	WOOD STAIN		OLD MASTERS				SEMI TRANSPARENT		CEDAR		

FIFTH FLOOR ROOM FINISH SCHEDULE

NO.	NAME	FLOOR		WALL				CEILING FINISH	REMARKS
		FINISH	BASE	NORTH	EAST	SOUTH	WEST		
500	ENTRY LOBBY	SVT1.2	RB1	PT4	P1	P1	P1	AT1 / P6	4,6
500B	CLEAN CORE	SVT1.2	RB1	P1	P1	P1	P1	AT1/P6	4,6
500D	CRASH CART ALCOVE	SVT1	RB1	P1	P1	P1	P1	AT1/P6	4,6
500E	LINEN ALCOVE	SVT1	RB1	P1	P1	P1	P1	P5	
500F	FIRE VALVE	SVT1	RB1	P1	P1	P1	P1	P5	
501	WAITING ROOM	SVT2	RB1	W1	W1	W1	W1	AT1 / P6	1,9
502	RECEPTION	CPT1	RB1	P1	P1	P1	P1	AT1 / P6	1,9
502A	WORKROOM	SVT2	RB1	P1	P1	P1	P1	AT1 / P5	1
503	TOILET	PT1	PT1	PT2.3 / EP1	PT2.3 / EP1	PT2.3 / EP1	PT2.3 / EP1	EP2	2, 8, 10
504	OFFICE	CPT1	RB1	P1	P1	P1	P1	AT1	1,9
505	OFFICE	CPT1	RB1	P1	P1	P1	P1	AT1	1,9
506	OFFICE	CPT1	RB1	P1	P1	P1	P1	AT1	1,9
507	STAFF LOUNGE	SVT1	RB1	P1	P1	P2	P2	AT1/P5	1,9
508	CONFERENCE ROOM	CPT1	RB1	P1	P2	P1	P1	AT1/P6	1,9
509	PATIENT INTAKE	CPT1	RB1	P1	P1	P2	P1	P5	9
510A	WOMEN'S LOCKER ROOM	SVT1	RB1	EP1	EP1	EP1	EP1	AT2	
510B	WOMEN'S TOILET	PT5	PT1	PT2.3	PT2.3	PT2.3	PT2.3	EP2	1, 2, 8, 11
510C	MEN'S LOCKER ROOM	SVT1	RB1	EP1	EP1	EP1	EP1	AT2	
510D	MEN'S TOILET	PT5	PT1	PT2.3	PT2.3	PT2.3	PT2.3	EP2	1, 2, 8, 11
511	MINOR PROCEDURE OR 2	WSF1	WSFB1	EP1	EP1	EP1	EP1	EP2	5, 9
512	MINOR PROCEDURE OR 1	WSF1	WSFB1	EP1	EP1	EP1	EP1	EP2	5, 9
513	SOILED ROOM	WSF1	WSFB1	EP1	EP1	EP1 / FRP	EP1 / FRP	AT2 / EP2	3
514	MEDICATION ROOM	SVT1	RB1	P1	P1	P1	P1	AT1	
516	STERILE STORAGE	SVT1	RB1	P1	P1	P1	P1	AT1 / P5	
517	CLEAN ROOM	WSF1	WSFB1	EP1	EP1	EP1	EP1	AT2 / EP2	
518	EXAM ROOM	WSF1	RB1	P1	P1	P4	P4	AT1 / P6	5
519	EXAM ROOM	WSF1	RB1	P1	P1	P4	P4	AT1 / P6	5
520	DATA	SVT1	RB1	P1	P1	P1	P1	-	
521	ELECTRICAL	SVT1	RB1	P1	P1	P1	P1	-	
522	LINEN ALCOVE	SVT1	RB1	P1	P1	P1	P1	P5	
523	STRETCHER CLOSET	SVT1	RB1	P1	P1	P1	P1	AT1	
524	EQUIPMENT STORAGE	SVT1	RB1	P1	P1	P1	P1	AT1	
525	OFFICE	CPT1	RB1	P1	P1	P1	P1	AT1	1,9
526	OFFICE	CPT1	RB1	P1	P1	P1	P1	AT1	1,9
528	OFFICE	CPT1	RB1	P1	P1	P1	P1	AT1	1,9
529	OFFICE	CPT1	RB1	P1	P1	P1	P1	AT1	1,9
530	OFFICE	CPT1	RB1	P1	P1	P1	P1	AT1	1,9
531	OFFICE	CPT1	RB1	P1	P1	P1	P1	AT1	1,9
532	OFFICE	CPT1	RB1	P1	P1	P1	P1	AT1	1,9
533	OFFICE	CPT1	RB1	P1	P1	P1	P1	AT1	1,9
534	STORAGE	SVT1	RB1	P1	P1	P1	P1	P5	
534B	BACK STAIR	SVT1, RTR	RB1	P1	P1	P1	P1	P5	
535	OFFICE	CPT1	RB1	P1	P1	P1	P1	AT1	1,9
536	COMPUTER	CPT1	RB1	P1	P1	P1	P1	AT1	1,9
537	OFFICE	CPT1	RB1	P1	P1	P1	P1	AT1	1,9
538	OFFICE	CPT1	RB1	P1	P1	P1	P1	AT1	1,9
539	OFFICE	CPT1	RB1	P1	P1	P1	P1	AT1	1,9
540	OFFICE	CPT1	RB1	P1	P1	P1	P1	AT1	1,9
541	OFFICE	CPT1	RB1	P1	P1	P1	P1	AT1	1,9
542	OFFICE	CPT1	RB1	P1	P1	P1	P1	AT1	1,9
543	JANITOR	PT6	PT6	P1 / FRP	P1 / FRP	P1	P1	P5	3
544	TOILET	PT1	PT1	PT2.3 / EP1	PT2.3 / EP1	PT2.3 / EP1	PT2.3 / EP1	EP2	2, 8, 10
545	TOILET	PT1	PT1	PT2.3 / EP1	PT2.3 / EP1	PT2.3 / EP1	PT2.3 / EP1	EP2	2, 8, 10

FOURTH FLOOR ROOM FINISH SCHEDULE

NO.	NAME	WALL				CEILING FINISH	REMARKS
		NORTH	EAST	SOUTH	WEST		
401	CHECK-IN						
402	OFFICE						
403	WAITING ROOM						
404	VISION						
404A	VISION						
405	EXAM						
406	EXAM						
408	AUDIOLOGY						
435	EXAM						
435A	EXAM						
436	RESTROOM						
437	EXAM						
438	EXAM						
439	AUDIOLOGY LAB						
439A	AUDIO BOOTH						
439B	AUDIO BOOTH						
441	STAIR						
443	AUDITORIUM						
443A	OFFICE						
443AA	STORAGE						
443B	OFFICE						
443D	OFFICE						
443K	STORAGE	EXIST.	PAINT MATCH EXIST.	EXIST.	EXIST.	EXIST.	7
443O	OFFICE						
443V	MULTIPURPOSE						
443W	STORAGE						
443X	OFFICE						
443Y	OFFICE						
443Z	STORAGE						
445	WAITING ROOM						
446	OFFICE						
446A	MECHANICAL						
447	EXAM						
447A	EXAM						
448	WOMENS						
449	MENS						
450	EXAM						
451	EXAM						
477	SAME DAY SURGERY						
477A	RECOVERY SPACE						
477B	RECOVERY SPACE						
477C	RECOVERY SPACE						

FOURTH FLOOR ROOM FINISH SCHEDULE

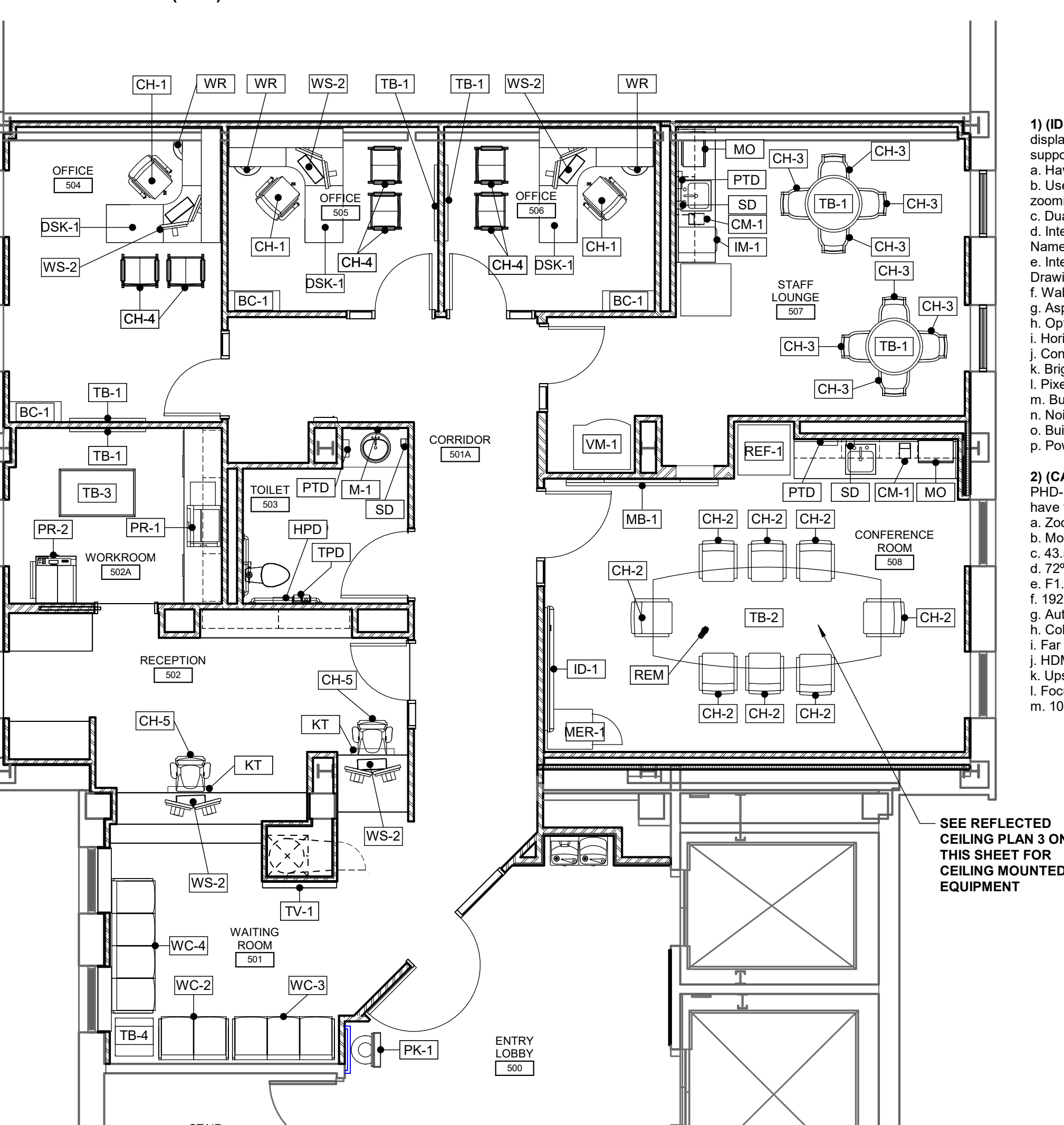
NO.	NAME	WALL				CEILING FINISH	REMARKS
		NORTH	EAST	SOUTH	WEST		
477D	RECOVERY SPACE						
477E	RECOVERY SPACE						
477F	RECOVERY SPACE						

TYPE	DESCRIPTION	MANUFACTURER	MODEL NUMBER	OWNER FURNISHED CODE	COMMENTS
AUD	OVERHEAD AUDIENCE MICROPHONE SYSTEM	TO BE SELECTED	XXX-XXX-XXX	VV	SEE REQUIRED SALIENT CHARACTERISTICS FOR MIC ON THIS PAGE
CAM-1	VEFL SYSTEM CAMERA	CISCO	CTS-PHD-1080P12 X	VV	SEE REQUIRED SALIENT CHARACTERISTICS FOR CAM-1 ON THIS PAGE
CC-1	CRASH CART	TO BE SELECTED	XXX-XXX-XXX	VV	
CM-1	10 CUP COFFEE MAKER	TO BE SELECTED	XXX-XXX-XXX	VV	
ES-1	BLOOD PRESSURE AND EXAM EQUIPMENT	TO BE SELECTED	XXX-XXX-XXX	VV	
ET-1	EXAM TABLE	TO BE SELECTED	XXX-XXX-XXX	VV	
GC-1	STRETCHER	TO BE SELECTED	XXX-XXX-XXX	VV	
GD	GAS CYLINDER STORAGE	TO BE SELECTED	XXX-XXX-XXX	VV	
GS	GLOVE DISPENSER	TO BE SELECTED	XXX-XXX-XXX	VV	
HC-1	MOBILE HOUSEKEEPING CART	TO BE SELECTED	XXX-XXX-XXX	VV	
HPD	HYGIENE PRODUCT DISPOSAL	TO BE SELECTED	XXX-XXX-XXX	VV	
ID-1	85" DIAGONAL INTERACTIVE DISPLAY	SMART TECHNOLOGIES	8085I	VV	SEE REQUIRED SALIENT CHARACTERISTICS FOR ID-1 ON THIS PAGE
IM-1	ICE MACHINE / DISPENSER	SCOTSMAN	HID312 MERIDIAN	VV	SEE PLUMBING DRAWINGS FOR CONNECTIONS
KT	KEYBOARD TRAY	TO BE SELECTED	XXX-XXX-XXX	VC	
L-1	LOCKER	PER SPECIFICATIONS	PER SPECIFICATIONS	CC	SEE INTERIOR ELEVATIONS FOR SIZE
M-1	MIRROR	PER SPECIFICATIONS	PER SPECIFICATIONS	CC	SEE INTERIOR ELEVATIONS FOR SIZE AND MOUNTING HEIGHTS
M-2	MIRROR	PER SPECIFICATIONS	PER SPECIFICATIONS	CC	SEE INTERIOR ELEVATIONS FOR SIZE AND MOUNTING HEIGHTS
MB-1	MARKERBOARD WITH SLIDING PANELS	TO BE SELECTED	XXX-XXX-XXX	VC	
MC-1	MOBILE CART	TO BE SELECTED	XXX-XXX-XXX	VV	
MC-2	MOBILE CART	TO BE SELECTED	XXX-XXX-XXX	VV	
MC-3	MOBILE WIRE SHELVING	TO BE SELECTED	XXX-XXX-XXX	VV	
MCM	MOBILE CARDIAC MONITOR ON CART	TO BE SELECTED	XXX-XXX-XXX	VV	
MED-1	MEDICATION DISPENSING SYSTEM	TO BE SELECTED	XXX-XXX-XXX	VV	
MED-2	SECURE MEDICATION STORAGE/DISPENSING "OMNICELL"	TO BE SELECTED	XXX-XXX-XXX	VV	
MER-1	MOBILE AUDIO VISUAL EQUIPMENT RACK	TO BE SELECTED	XXX-XXX-XXX	VV	SEE REQUIRED SALIENT CHARACTERISTICS FOR MER-1 ON THIS PAGE
MH-1	MOP AND BROOM HOLDER	PER SPECIFICATIONS	PER SPECIFICATIONS	CC	SEE INTERIOR ELEVATIONS FOR SIZE AND MOUNTING HEIGHTS
MH-2	MOP AND BROOM HOLDER	PER SPECIFICATIONS	PER SPECIFICATIONS	CC	SEE INTERIOR ELEVATIONS FOR SIZE AND MOUNTING HEIGHTS
MIC	MEDICAL INSTRUMENT CART	TO BE SELECTED	XXX-XXX-XXX	VV	
MO	MICROWAVE OVEN	TO BE SELECTED	XXX-XXX-XXX	VV	
MPTT	MINOR PROCEDURE TREATMENT TABLE	TO BE SELECTED	XXX-XXX-XXX	VV	
ORL-1	OPERATING ROOM BOOM LIGHT	SKYTRON	SALVAGED FROM EXISTING OPERATING ROOM	VC	SALVAGED FROM EXISTING OPERATING ROOMS SEE REFLECTED CEILING PLAN AND ELECTRICAL DRAWINGS FOR LOCATION
PK-1	PATIENT CHECK-IN KIOSK	VECNIA	MFG-10201	VV	
PLS-1	CEILING MOUNTED LIFT SYSTEM	HILLROM LKORALL	SINGLE OVERHEAD LIFT	CC	550 LB CAPACITY TRAVERSE RAIL LIFT SYSTEM
PLS-2	CEILING MOUNTED LIFT SYSTEM	HILLROM LKORALL	TWIN OVERHEAD LIFT	CC	1100 LB CAPACITY TRAVERSE RAIL LIFT SYSTEM
PR-1	COLOR LASER PRINTER	TO BE SELECTED	XXX-XXX-XXX	VV	
PR-2	COPY/PRINT/LASER/FAX MACHINE	TO BE SELECTED	XXX-XXX-XXX	VV	
PTD	PAPER TOWEL DISPENSER	TO BE SELECTED	XXX-XXX-XXX	VC	
REF-1	REFRIGERATOR	TO BE SELECTED	XXX-XXX-XXX	VV	
REM	AUDIO VISUAL REMOTE CONTROL	TO BE SELECTED	XXX-XXX-XXX	VV	SEE REQUIRED SALIENT CHARACTERISTICS FOR REM ON THIS PAGE
RMP-1	PORTABLE RAMP	TO BE SELECTED	PER SPECIFICATIONS	CC	10" HIGH X 42" WIDE X 60" LONG
SC	SHARPS DISPOSAL CONTAINER	TO BE SELECTED	XXX-XXX-XXX	VV	
SC-1	SHOWER ROD AND CURTAIN	PER SPECIFICATIONS	PER SPECIFICATIONS	CC	SHOWER CURTAIN SUPPLIED BY VA. SHOWER ROD BY CONTRACTOR
SCA	PATIENT MEDICAL SCALE	TO BE SELECTED	XXX-XXX-XXX	VV	
SD	SOAP DISPENSER	TO BE SELECTED	XXX-XXX-XXX	VC	
SR-1	WIRE STORAGE RACK 60" X 18"	TO BE SELECTED	XXX-XXX-XXX	VV	
SR-2	WIRE STORAGE RACK 48" X 18"	TO BE SELECTED	XXX-XXX-XXX	VV	
SS	ADA SHOWER SEAT	PER SPECIFICATIONS	PER SPECIFICATIONS	CC	SEE DETAILS FOR MOUNTING HEIGHT
TB-1	BULLETIN TACK BOARD	TO BE SELECTED	XXX-XXX-XXX	VV	
TPD	TOILET PAPER DISPENSER	TO BE SELECTED	XXX-XXX-XXX	VC	
TV-1	43" WALL MOUNTED TELEVISION	TO BE SELECTED	XXX-XXX-XXX	VV	
UC-1	UTILITY CART	TO BE SELECTED	XXX-XXX-XXX	VV	
VM-1	VENDING MACHINE	TO BE SELECTED	XXX-XXX-XXX	VV	
WC	WALL CLOCK	TO BE SELECTED	XXX-XXX-XXX	VC	
XRV	X-RAY VIEWER	TO BE SELECTED	XXX-XXX-XXX	VV	

** COORDINATE ALL QUANTITIES WITH DRAWINGS AND AS DIRECTED BY THE VA CONTRACTING OFFICERS REPRESENTATIVE (COR)

TYPE	DESCRIPTION	MANUFACTURER	MODEL NUMBER	OWNER FURNISHED CODE	COMMENTS
ART-1	HISTORICAL CARTOUCHE ARTWORK	NA	SALVAGED	VC	HEAVY CONCRETE CARTOUCHE WILL REQUIRE ADDITIONAL BLOCKING FOR SUPPORT
BC-1	BOOKCASE	TO BE SELECTED	XXX-XXX-XXX	VV	
CH-1	OFFICE CHAIR	TO BE SELECTED	XXX-XXX-XXX	VV	
CH-2	CONFERENCE CHAIR	TO BE SELECTED	XXX-XXX-XXX	VV	
CH-3	DINING CHAIR	TO BE SELECTED	XXX-XXX-XXX	VV	
CH-4	OFFICE SIDE CHAIR	TO BE SELECTED	XXX-XXX-XXX	VV	
CH-5	RECEPTION DESK CHAIR	TO BE SELECTED	XXX-XXX-XXX	VV	
DSK-1	MODULAR WORK STATION OFFICE	TO BE SELECTED	XXX-XXX-XXX	VV	
DSK-2	INTAKE DESK	TO BE SELECTED	XXX-XXX-XXX	VV	
DSK-3	MODULAR WORK STATION EXAM	TO BE SELECTED	XXX-XXX-XXX	VV	

** COORDINATE ALL QUANTITIES WITH DRAWINGS AND AS DIRECTED BY THE VA CONTRACTING OFFICERS REPRESENTATIVE (COR)



EQUIPMENT FLOOR PLAN SCALE: 3/16" = 1'-0"

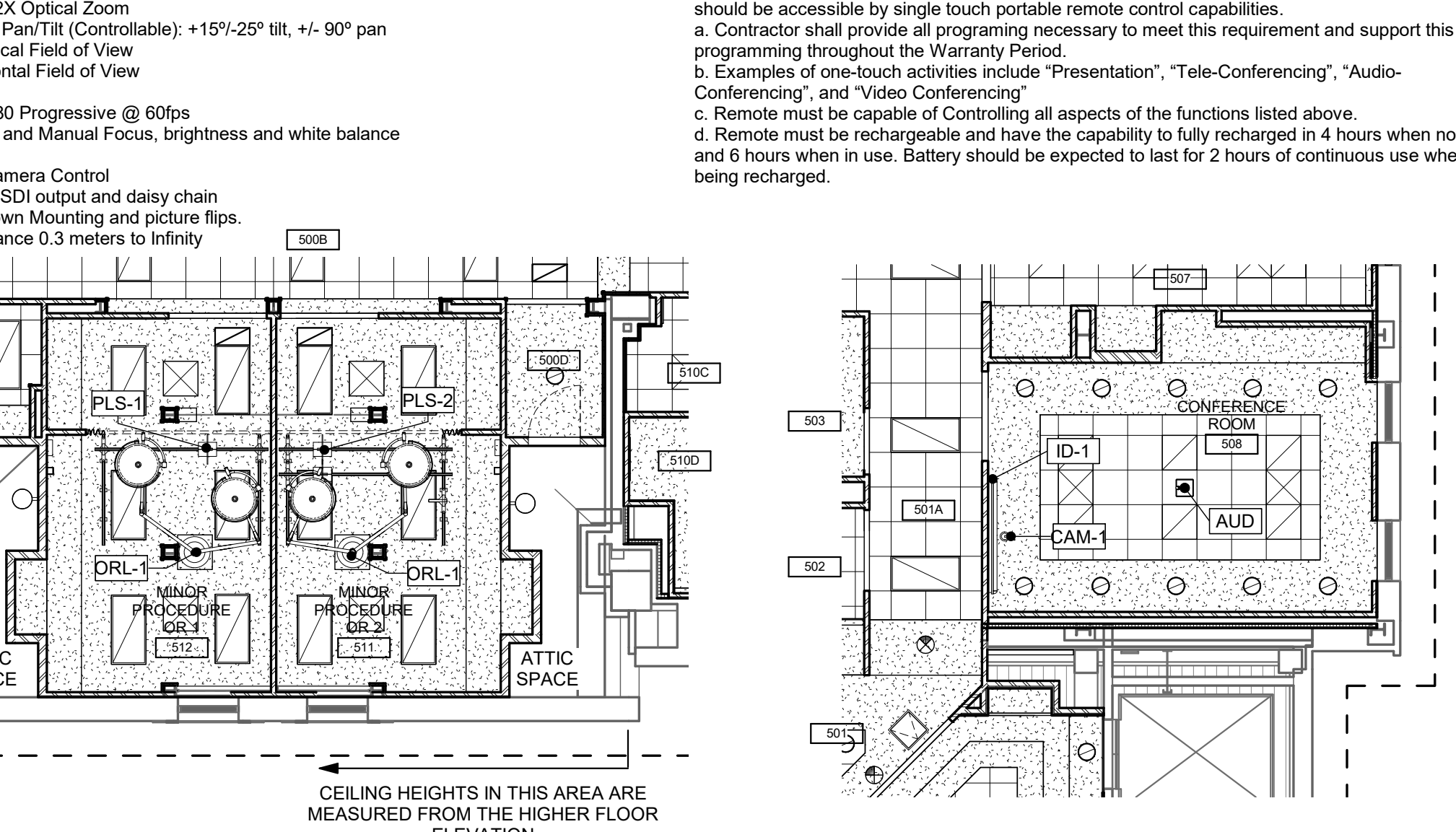
TYPE	DESCRIPTION	MANUFACTURER	MODEL NUMBER	OWNER FURNISHED CODE	COMMENTS
LH-1	MOBILE LINEN HAMPER	TO BE SELECTED	XXX-XXX-XXX	VV	
ST	EXAM STOOL	TO BE SELECTED	XXX-XXX-XXX	VV	
TB-1	36" ROUND TABLE	TO BE SELECTED	XXX-XXX-XXX	VV	
TB-2	CONFERENCE TABLE	TO BE SELECTED	XXX-XXX-XXX	VV	
TB-3	30" X 48" TABLE	TO BE SELECTED	XXX-XXX-XXX	VV	
TB-4	WAITING ROOM SIDE TABLE	TO BE SELECTED	XXX-XXX-XXX	VV	
WC	FOLD-UP WHEEL CHAIR	TO BE SELECTED	XXX-XXX-XXX	VV	
WC-2	WAITING ROOM CHAIR DOUBLE	TO BE SELECTED	XXX-XXX-XXX	VV	
WC-3	WAITING ROOM CHAIR TRIPLE	TO BE SELECTED	XXX-XXX-XXX	VV	
WC-4	WAITING ROOM CHAIR QUAD	TO BE SELECTED	XXX-XXX-XXX	VV	
WR	WASTEBASKET	TO BE SELECTED	XXX-XXX-XXX	VV	
WS-2	COMPUTER WORKSTATION	TO BE SELECTED	XXX-XXX-XXX	VV	

SALIENT CHARACTERISTICS FOR AUDIO VISUAL IN CONFERENCE ROOM 508:

CONTRACTOR TO REMOVE, AND SALVAGE EXISTING TECHNOLOGY EQUIPMENT IN CONFERENCE ROOM 506C FOR REINSTALLATION BY THE VA IN CONFERENCE ROOM 508. (COORDINATE ANY SPECIAL HOOKUP REQUIREMENTS WITH THE VA TO ALLOW FOR A COMPLETE FUNCTIONING SYSTEM)

- ID-1 DISPLAY** - Interactive presentation and instruction technologies (wall-mounted displays, boards, etc.) and shall be a minimum of 85" diagonal viewing measurement and support both high definition and standard audio and video technologies.
 - Have touch-enabled interactivity
 - Use of an array of gestures within applications, including panning, scaling, rotating, and zooming
 - Dual User Support
 - Interactive Software with appropriate licensing (Smart Meeting Pro Software - Brand Name or Equal)
 - Interactive ability to use as an electronic drawing board (White Board with Multi-color Drawing Capability including licensing)
 - Wall Mounted
 - Aspect Ratio 16:9
 - Optimal Resolution 3840x2160 @ 30 Hz
 - Horizontal Frequency Range 244-280kHz (analog and digital)
 - Contract Ratio: 1800:1
 - Brightness: 250-300cd/m²
 - Pixel Pitch: 0.48mm
 - Built in Audio - 10 Watt minimum
 - Noise Level: 55 db
 - Built in Audio - 10 Watt Minimum
 - Power: 100V - 240V AC, 50 Hz to 60 Hz
- CAM-1 CAMERA** - Contractor shall provide a VTEL system that matches Cisco CTS-PHD-1080P12X and CISCO Telepresence Codec C60 - brand name or equal. Camera must have the following minimum requirements:
 - Zoom - 12X Optical Zoom
 - Motorized Pan/Tilt (Controllable) - +15/-25° tilt, +/- 90° pan
 - 43.8" Vertical Field of View
 - 7.2" Horizontal Field of View
 - F1.7
 - 1920 X 1280 Progressive @ 60fps
 - Automatic and Manual Focus, brightness and white balance
 - Color
 - Far End Camera Control
 - HDMI, HD-SDI output and daisy chain
 - Upside Down Mounting and picture flips
 - Focus distance 0.3 meters to Infinity
 - 1080P
- MER EQUIPMENT RACK** - Contractor shall provide a secure component rack for all media equipment components proposed. Rack shall be moveable and not exceed 50" in height (Floor to Top of Rack, 24" in width, and 36" in depth). Rack shall have a minimum of 4 castors for mobility. Rack shall be ventilated and have installed cooling fans. Rack shall incorporate components that provide the following additional minimal number of input jacks for the connection of additional components as necessary:
 - 4 HDMI
 - 2 VGA
 - 2 DVI
 - 2 USB
 - 2 1/8" Stereo Jacks
 - 2 Composite Jack Sets
 - 2 Component Jack Sets (Red/Green/Blue)
 - 1 Cable TV Jack
 Rack shall incorporate the following minimal number of output jacks in addition to outputs required for operation of all proposed equipment:
 - 1 HDMI
 - 1 1/8" Stereo Jacks
 - 1 Composite Jack Sets
 - 2 Component Jack Sets (Red/Green/Blue)
 - 1 Cable TV Jack
- REM REMOTE** - Room shall have full automation of all technologies and functionality. All functions should be accessible by single touch portable remote control capabilities.
 - Contractor shall provide all programming necessary to meet this requirement and support this programming throughout the Warranty Period
 - Examples of one-touch activities include "Presentation", "Tele-Conferencing", "Audio-Conferencing", and "Video Conferencing"
 - Remote must be capable of Controlling all aspects of the functions listed above
 - Remote must be rechargeable and have the capability to fully recharge in 4 hours when not in use and 6 hours when in use. Battery should be expected to last for 2 hours of continuous use when not being recharged.

SEE REFLECTED CEILING PLAN 3 ON THIS SHEET FOR CEILING MOUNTED EQUIPMENT

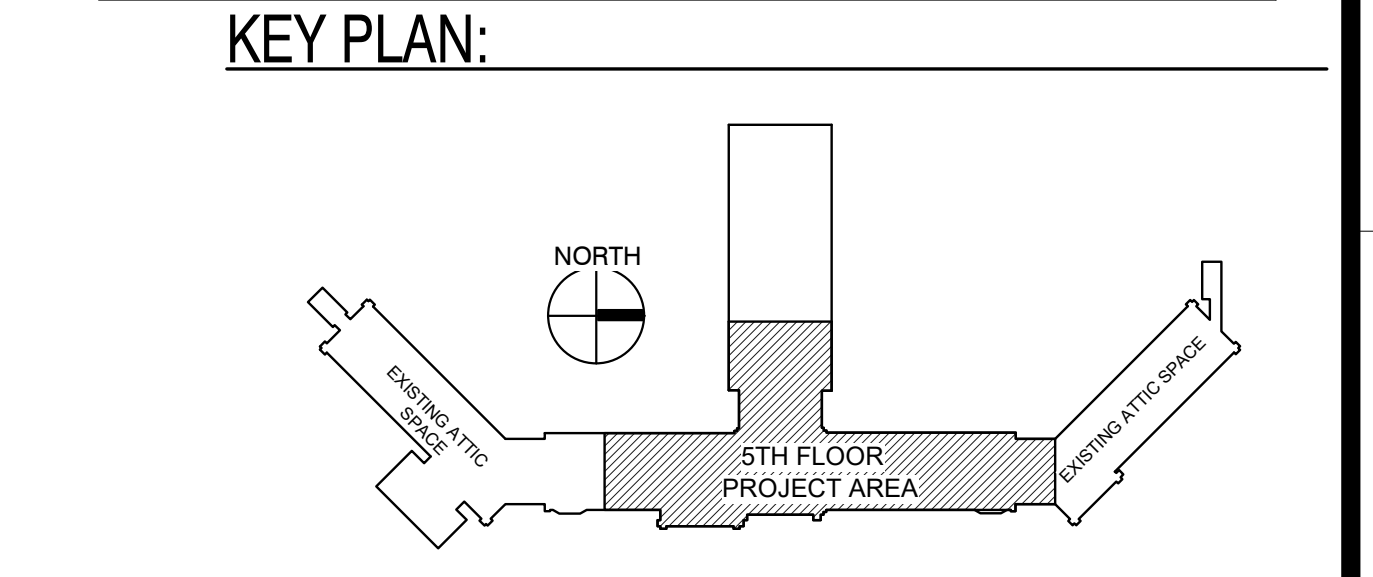


REFLECTED CEILING PLAN SCALE: 1/8" = 1'-0"

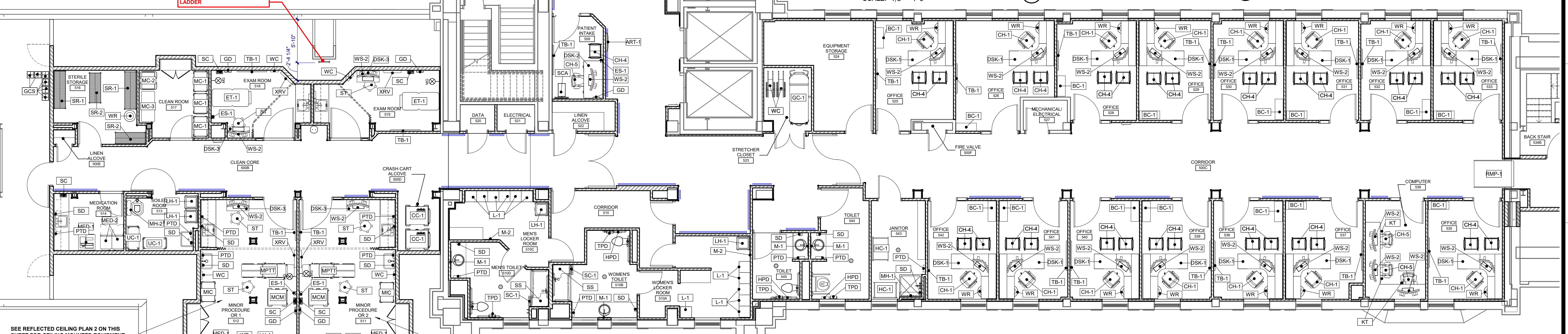
GENERAL NOTES:

- ALL FURNITURE AND EQUIPMENT SHOWN ON THIS SHEET IS FOR CONTRACTORS GENERAL INFORMATION.
- PROVIDE BLOCKING AND BACKING AS REQUIRED FOR ALL FURNITURE AND EQUIPMENT SHOWN. SOME LOCATIONS MAY NOT BE INDICATED ON THE DRAWINGS. CONTRACTOR TO COORDINATE WITH ALL TRADES AND WITH VA CONTRACTING OFFICERS REPRESENTATIVE (COR) REGARDING ALL LOCATIONS FOR INSTALLATION OF BACKING.
- COORDINATE ALL UTILITIES AND CONNECTION LOCATIONS WITH EQUIPMENT MANUFACTURER.
- CONTRACTOR TO COORDINATE ALL QUANTITIES WITH THE DRAWINGS AND WITH THE VA CONTRACTING OFFICERS REPRESENTATIVE (COR).

OWNER FURNISHED ITEMS ABBREVIATION REFERENCE	
VV	= VA SUPPLIED AND VA INSTALLED.
VC	= VA SUPPLIED AND CONTRACTOR INSTALLED.
CC	= CONTRACTOR SUPPLIED AND CONTRACTOR INSTALLED.
*	WHERE NO ABBREVIATION IS INDICATED THE CONTRACTOR IS TO SUPPLY AND INSTALL THE EQUIPMENT



KEY PLAN:



EQUIPMENT FLOOR PLAN SCALE: 3/16" = 1'-0"

CONSULTANTS: WPE WEST PLAINS ENGINEERING 4609 SOUTH TECHLINK CIRCLE • SIOUX FALLS, SD 57106 PHONE: (605) 362-3753 • FAX: (605) 362-3759 RAPID CITY, SD • SIOUX FALLS, SD • CASPER, WY • CEDAR RAPIDS, IA • BISMARCK, ND		SEAL: 		ARCHITECT: MSH ARCHITECTS 625 S. MINNESOTA AVENUE, SUITE 204 SIOUX FALLS, SOUTH DAKOTA 57104-4873 TELE: (605) 332-7850 FAX: (605) 332-3539		Drawing Title EQUIPMENT PLAN Approved: Project Director		Project Title V.A. HEALTH CARE SYSTEM RENOVATE 5TH FLOOR SURGERY Project Number 438-15-201 Building Number 5 Drawing Number 5-IF101 Dwg. 21 of 60		Office of Construction and Facilities Management Department of Veterans Affairs	
---	--	------------------	--	--	--	--	--	---	--	--	--