

- A FLOOR-MOUNTED HIC WATER CLOSET WITH FLUSH VALVE
- B 1 1/2" DIAMETER GRAB BAR, SEE STRUCTURAL FOR MOUNTING DETAIL.
- C TOILET PAPER DISPENSER
- D HYGIENE PRODUCT DISPOSAL
- E INTEGRAL LAVATORY (SINGLE LEVER HANDLE FAUCET)
- F VANITY COUNTERTOP AND SKIRT
- G MIRROR WITH BOTTOM OF REFLECTING SURFACE NO HIGHER THAN 40"
- H SHOWER ENCLOSURE
- I SHOWER CONTROL AREA
- J ADJUSTABLE SHOWER HEAD WITH 60" HOSE
- K FIRE EXTINGUISHER CABINET
- L PAPER TOWEL DISPENSER
- M SOAP DISPENSER
- N MEDICAL GAS OUTLETS (SEE FLOOR PLAN FOR ROOM LOCATION AND OUTLET ORDER)
- O SHOWER BENCH

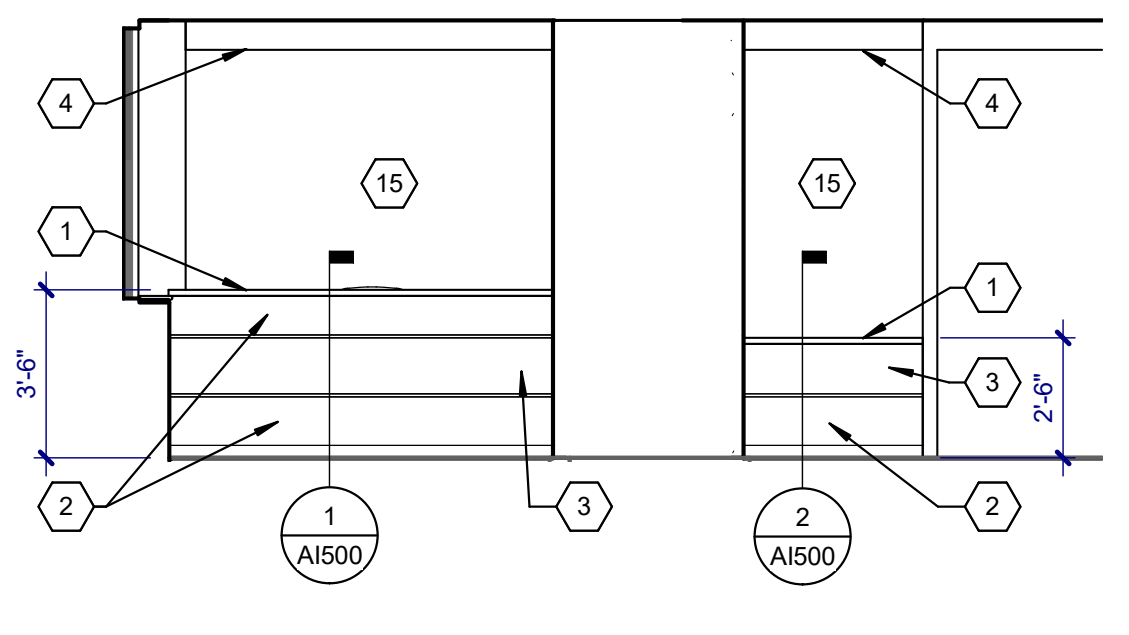
* PROVIDE BLOCKING FOR ALL GRAB BARS AND RESTROOM ACCESSORIES.
 * COORDINATE WITH V.A. CONTRACTING OFFICER'S REPRESENTATIVE FOR PLACEMENT OF V.A. FURNISHED ACCESSORIES TO BE INSTALLED BY CONTRACTOR

TYPICAL ACCESSIBLE ELEMENTS

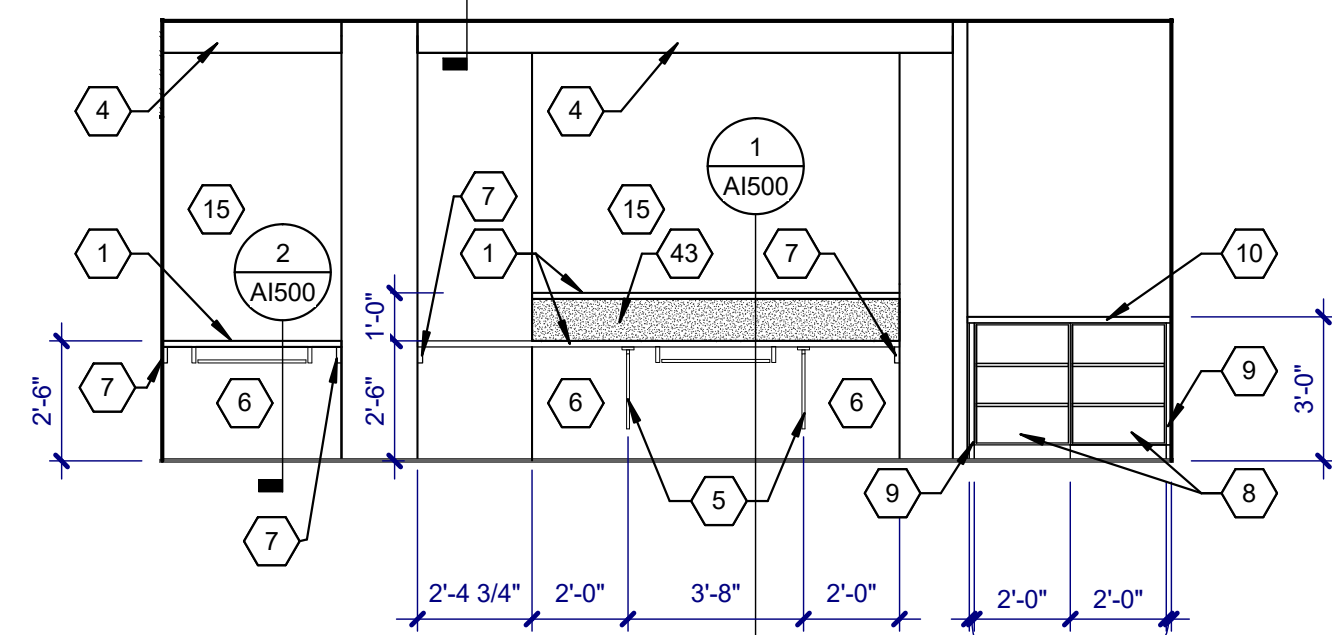
SCALE: 1/4" = 1'-0"

KEYNOTES:

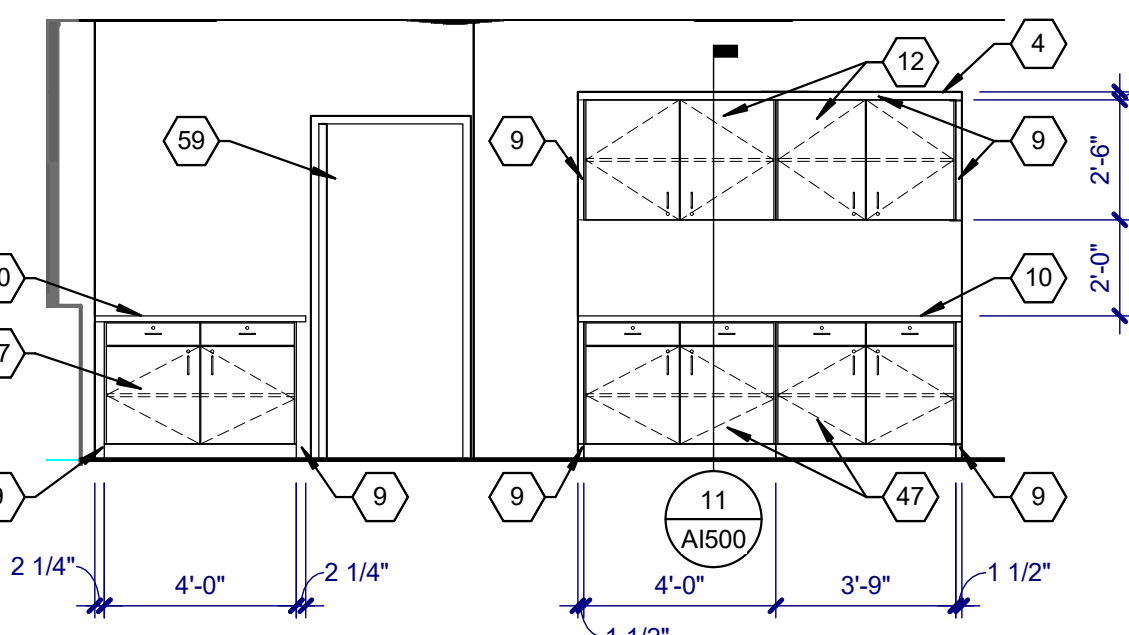
- 1 SOLID SURFACE COUNTERTOP, SCRIBE TO WALL
- 2 PLASTIC LAMINATE PANEL ON PLYWOOD
- 3 TRANSLUCENT RESIN PANEL
- 4 GYPSUM BOARD SOFFIT
- 5 METAL COUNTERTOP BRACE
- 6 OPEN BELOW, PAINTED GYPSUM BOARD BEYOND
- 7 PLASTIC LAMINATE COUNTERTOP CLEAT
- 8 24" DEEP PLASTIC LAMINATE OPEN BASE CABINET WITH ADJUSTABLE SHELVES
- 9 PLASTIC LAMINATE FILLER PANEL, SCRIBE TO WALL
- 10 PLASTIC LAMINATE COUNTERTOP, SCRIBE TO WALL
- 11 24" DEEP PLASTIC LAMINATE BASE CABINET WITH WIRE PULLS, KEYED LOCKS, ADJUSTABLE SHELVING AND/OR DRAWERS
- 12 12" DEEP PLASTIC LAMINATE UPPER CABINET WITH WIRE PULLS, KEYED LOCKS, AND ADJUSTABLE SHELVING
- 13 12" DEEP PLASTIC LAMINATE UPPER CABINET WITH WIRE PULLS, KEYED LOCKS, ADJUSTABLE SHELVING, AND PLASTIC LAMINATE SLOPED TOP
- 14 24" DEEP PLASTIC LAMINATE BASE CABINET WITH WIRE PULLS AND FILE DRAWERS
- 15 OPEN BEYOND
- 16 PLASTIC LAMINATE FINISH PANEL
- 17 24" DEEP PLASTIC LAMINATE SINK BASE CABINET WITH WIRE PULLS, KEYED LOCKS, AND ADJUSTABLE SHELVING
- 18 PLASTIC LAMINATE COUNTERTOP WITH BACKSPLASH AND SIDESPLASH, SCRIBE TO WALL
- 19 HANDSINK, SEE PLUMBING
- 20 REFRIGERATOR, FURNISHED AND INSTALLED BY OWNER.
- 21 SOAP DISPENSER, FURNISHED BY OWNER, INSTALLED BY CONTRACTOR
- 22 PAPER TOWEL DISPENSER, FURNISHED BY OWNER, INSTALLED BY CONTRACTOR
- 23 FLOOR MOUNTED FLUSH VALVE WATER CLOSET, SEE PLUMBING
- 24 1 1/2" DIAMETER GRAB BAR, SEE STRUCTURAL FOR MOUNTING DETAIL, PROVIDE BACKING AS REQUIRED
- 25 TOILET PAPER DISPENSER, FURNISHED BY OWNER, INSTALLED BY CONTRACTOR
- 26 HYGIENE PRODUCT DISPOSAL, FURNISHED BY OWNER, INSTALLED BY CONTRACTOR
- 27 SOLID SURFACE VANITY WITH INTEGRAL LAVATORY SINK
- 28 30" WIDE X 42" MIRROR WITH TRIM
- 29 20" WIDE X 42" MIRROR WITH TRIM
- 30 24" WIDE X 72" MIRROR WITH TRIM
- 31 12" DEEP ADJUSTABLE PLASTIC LAMINATE SHELVING ON STANDARD WALL BRACKETS
- 32 MOP SINK, SEE PLUMBING
- 33 FAUCET, SEE PLUMBING
- 34 MOP AND BROOM HOLDER WITH INTEGRAL STAINLESS STEEL SHELF
- 35 FIBERGLASS REINFORCED PLASTIC PANEL
- 36 18" WIDE X 18" DEEP X 72" HIGH DOUBLE TIER "Z" CONFIGURATION PLASTIC LOCKER WITH INTEGRAL BASE AND SLOPED TOP
- 37 PREFINISHED METAL LOCKER FILLER PANEL, SCRIBE TO WALL
- 38 PREFINISHED METAL LOCKER FINISHED END
- 39 ADA HANDHELD ADJUSTABLE SHOWER HEAD, SEE PLUMBING
- 40 SHOWER TILE FLOORING AND MEMBRANE, SLOPE FLOOR TO PROVIDE PROPER SLOPE TO DRAIN
- 41 ADA WALL-MOUNTED FOLDING SHOWER SEAT, PROVIDE BACKING AS REQUIRED
- 42 DUAL-HEIGHT ACCESSIBLE DRINKING FONTAIN WITH BOTTLE FILLER
- 43 FABRIC COVERED CORK TACK SURFACE
- 44 4 1/2" DIMENSIONAL LETTER SIGNAGE
- 45 HANDRAIL
- 46 ARTWORK FURNISHED AND INSTALLED BY OWNER
- 47 18" DEEP PLASTIC LAMINATE BASE CABINET WITH WIRE PULLS, KEYED LOCKS, ADJUSTABLE SHELVING AND/OR DRAWERS
- 48 SHOWER ROD, CURTAIN AND HOOKS
- 49 COUNTER MICROWAVE, FURNISHED AND INSTALLED BY OWNER.
- 50 COFFEE MAKER, FURNISHED AND INSTALLED BY OWNER.
- 51 LEDGE STONE TILE VENEER
- 52 PLASTIC LAMINATE COUNTERTOP WITH SUPPORT BRACKET AND WIRE MANAGEMENT
- 53 TILE WALL - SEE 2/AF100
- 54 TILE WALL - SEE 3/AF100
- 55 FLOOR MOUNTED, 600 LB CAPACITY, FLUSH VALVE, ADA COMPLIANT, ANTIMICROBIAL ENAMEL COATED STAINLESS STEEL BARIATRIC WATER CLOSET, SEE PLUMBING
- 56 600 LB CAPACITY, HEAVY DUTY STAINLESS STEEL SWING UP STYLE GRAB BAR
- 57 CUBICLE CURTAIN, TRACK AND HOOKS
- 58 MEDICAL GAS STATION (SEE MECHANICAL DRAWINGS)
- 59 POCKET DOOR
- 60 REPLACE GLAZING IN THIS WINDOW WITH NEW FROSTED OBSCURED GLAZING (SEE WINDOW TYPES ON A1503) FOR SIZE
- 61 ICE MACHINE FURNISHED AND INSTALLED BY OWNER (SEE PLUMBING DRAWINGS FOR CONNECTIONS TO BE INSTALLED BY CONTRACTOR)



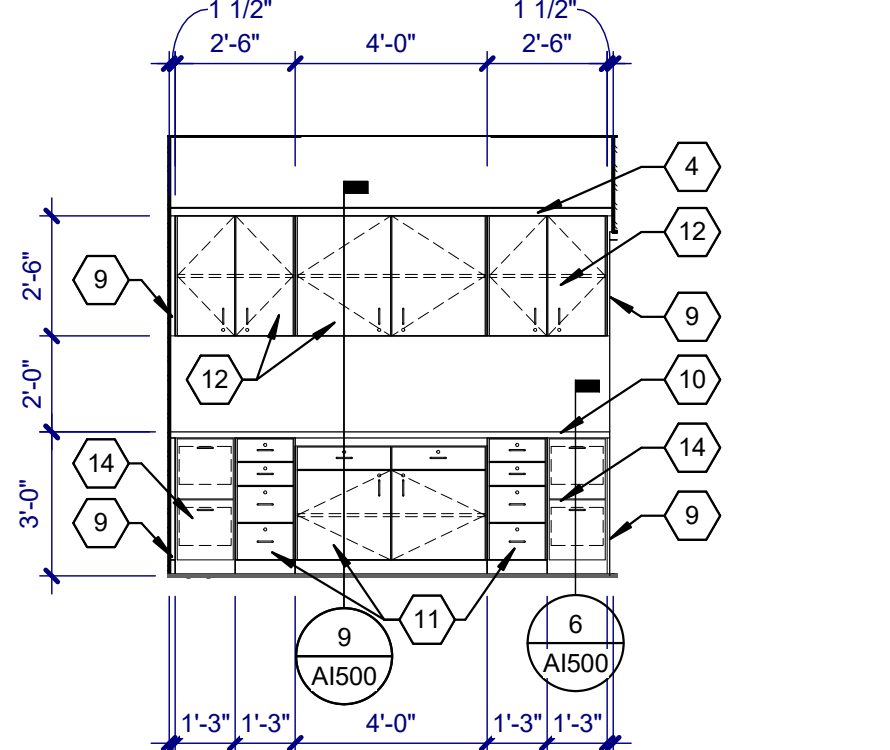
WAITING ROOM 501 WEST
SCALE: 1/4" = 1'-0"



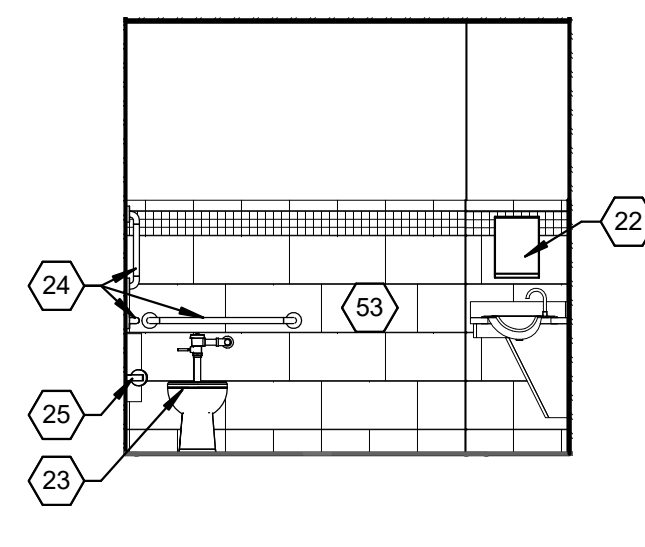
RECEPTION 502 EAST
SCALE: 1/4" = 1'-0"



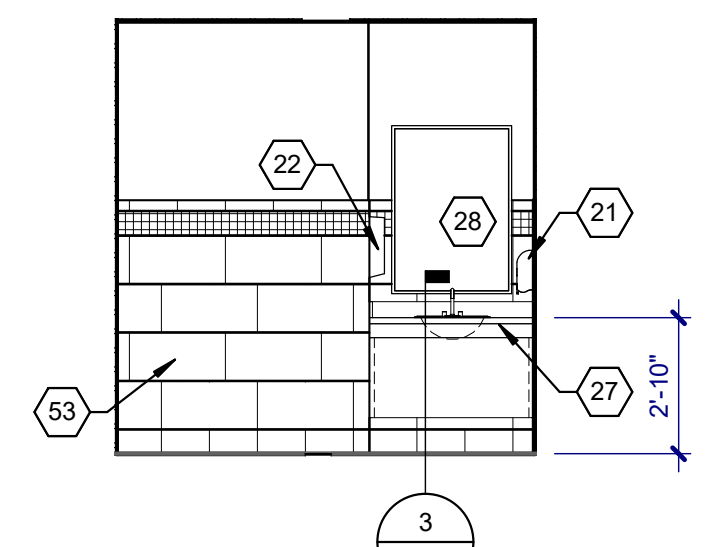
RECEPTION 502 WEST
SCALE: 1/4" = 1'-0"



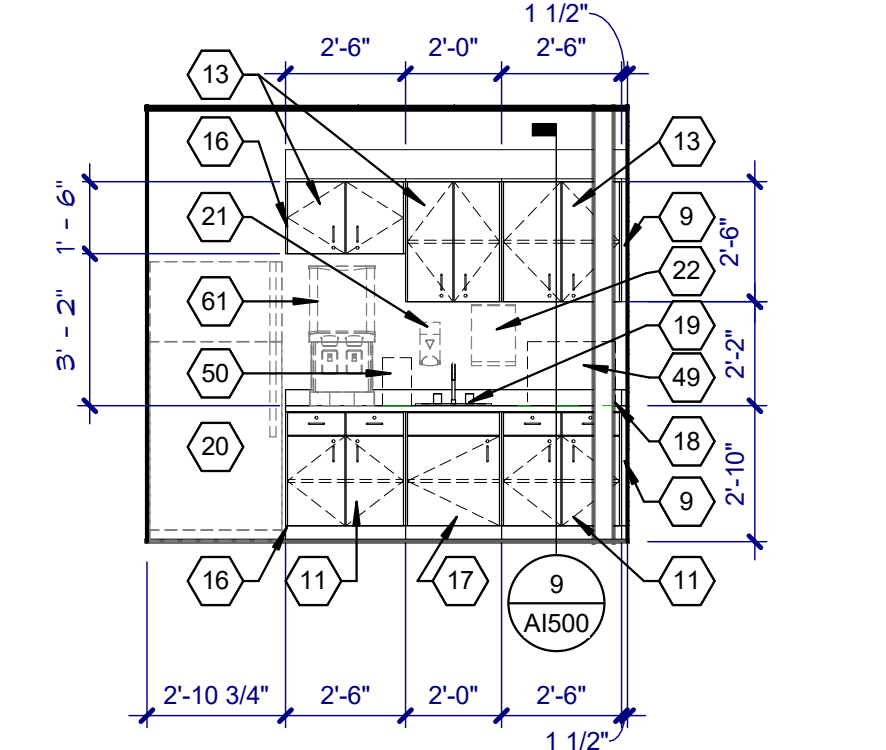
WORK ROOM 502A NORTH
SCALE: 1/4" = 1'-0"



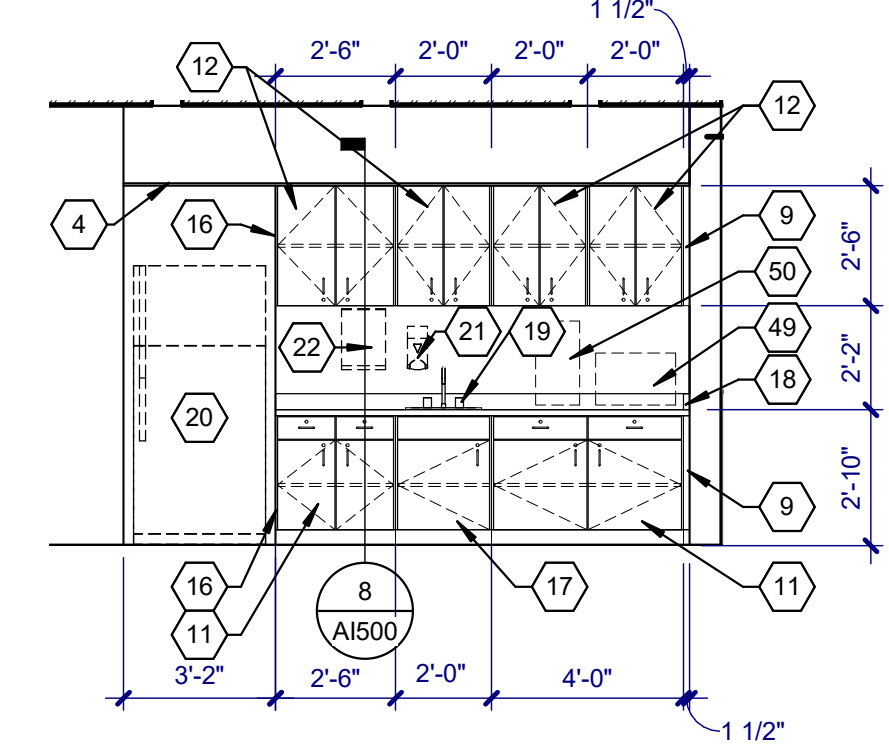
TOILET 503 SOUTH
SCALE: 1/4" = 1'-0"



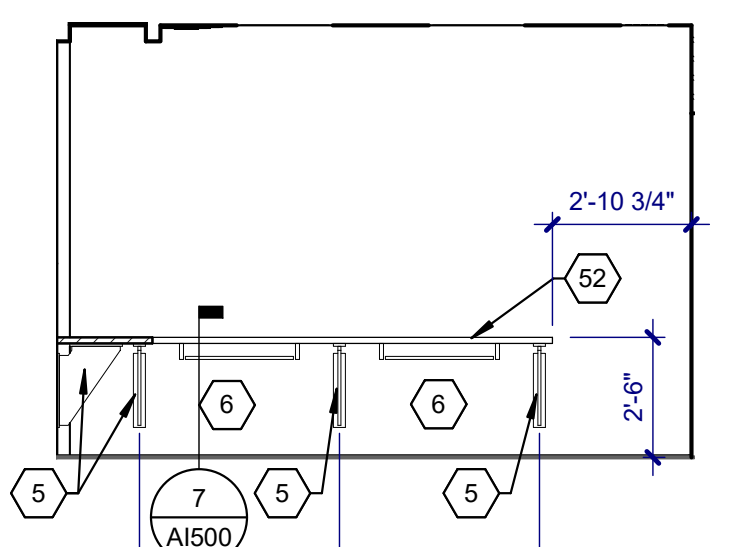
TOILET 503 WEST
SCALE: 1/4" = 1'-0"



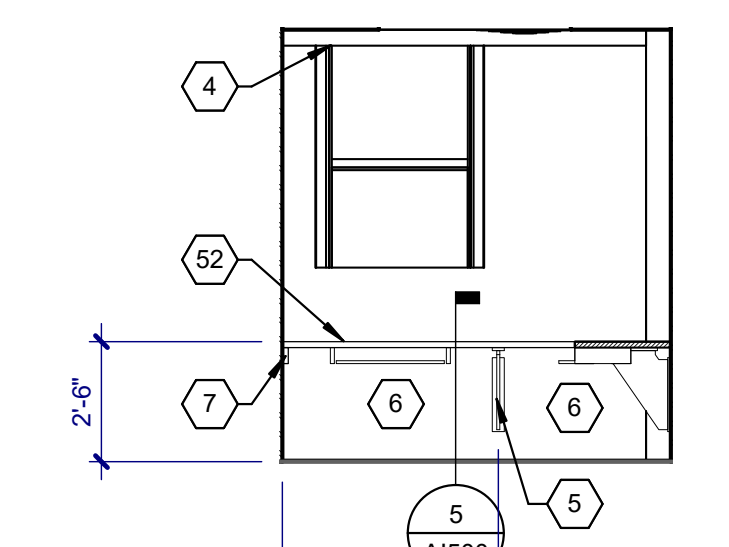
STAFF LOUNGE 507 SOUTH
SCALE: 1/4" = 1'-0"



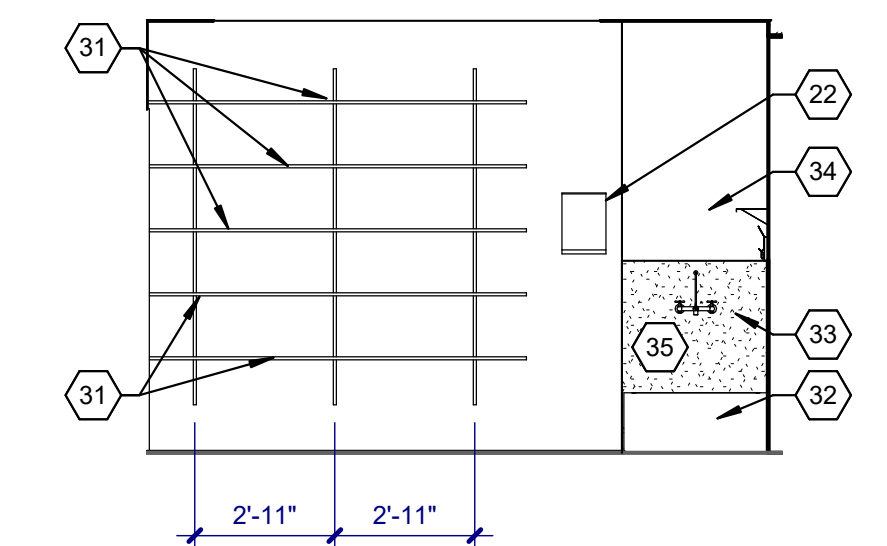
CONFERENCE ROOM 508 WEST
SCALE: 1/4" = 1'-0"



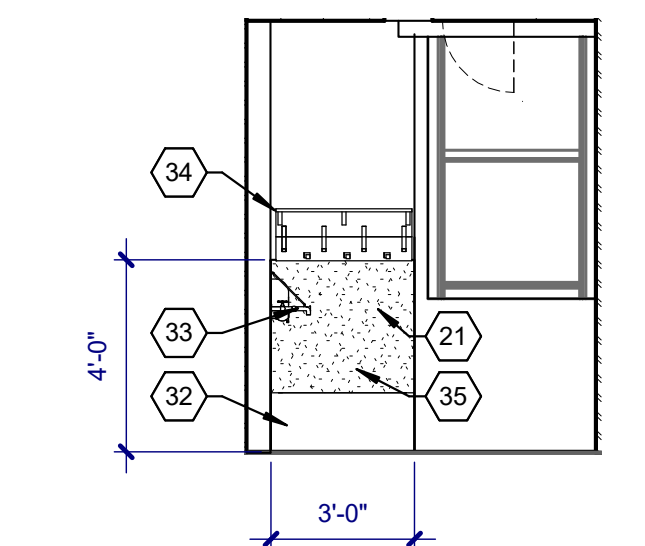
COMPUTER 536 SOUTH
SCALE: 1/4" = 1'-0"



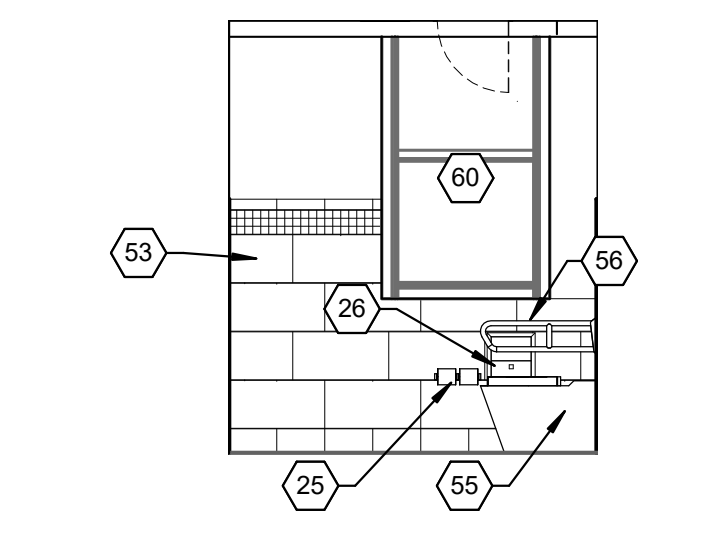
COMPUTER 536 EAST
SCALE: 1/4" = 1'-0"



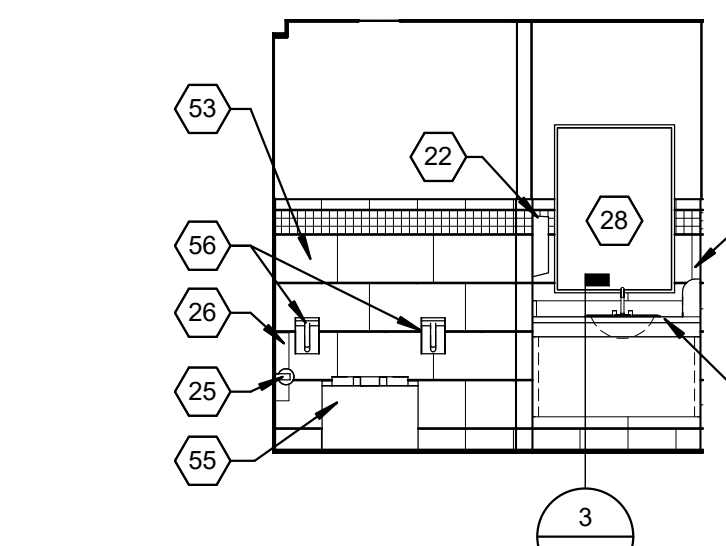
JANITOR 543 NORTH
SCALE: 1/4" = 1'-0"



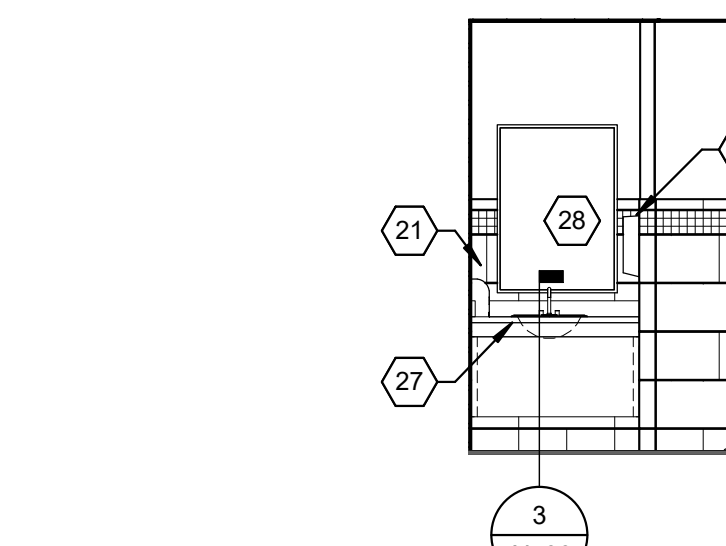
JANITOR 543 EAST
SCALE: 1/4" = 1'-0"



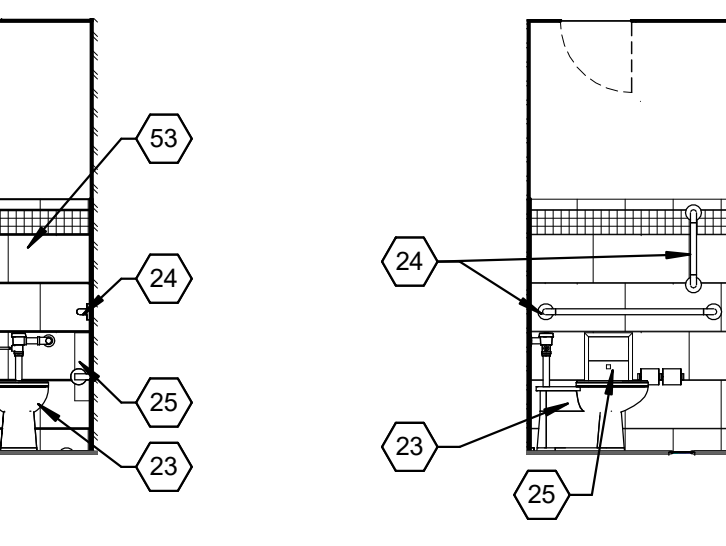
WOMEN'S TOILET 544 EAST
SCALE: 1/4" = 1'-0"



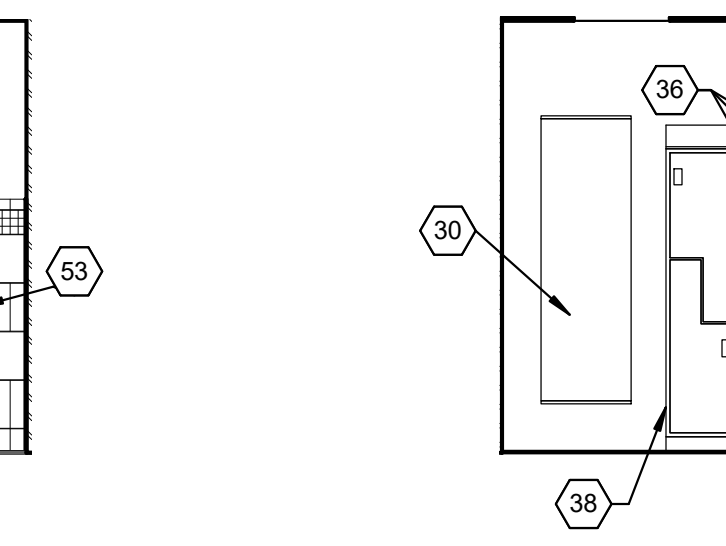
WOMEN'S TOILET 544 SOUTH
SCALE: 1/4" = 1'-0"



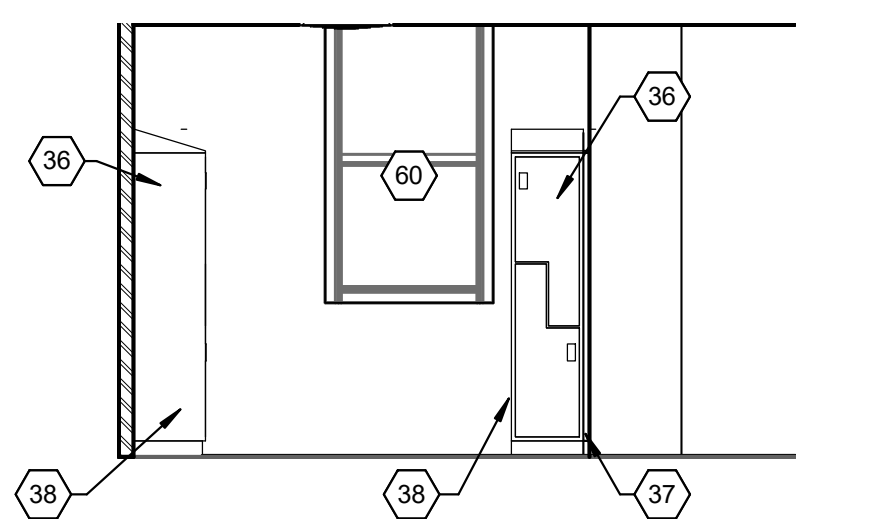
MEN'S TOILET 545 NORTH
SCALE: 1/4" = 1'-0"



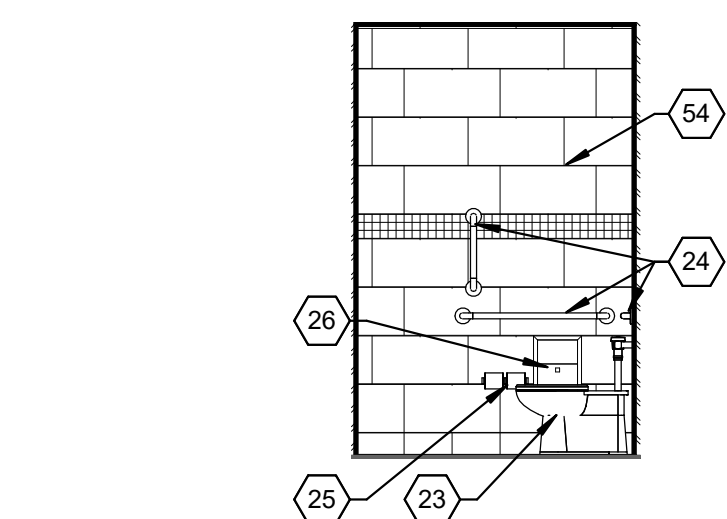
MEN'S TOILET 545 EAST
SCALE: 1/4" = 1'-0"



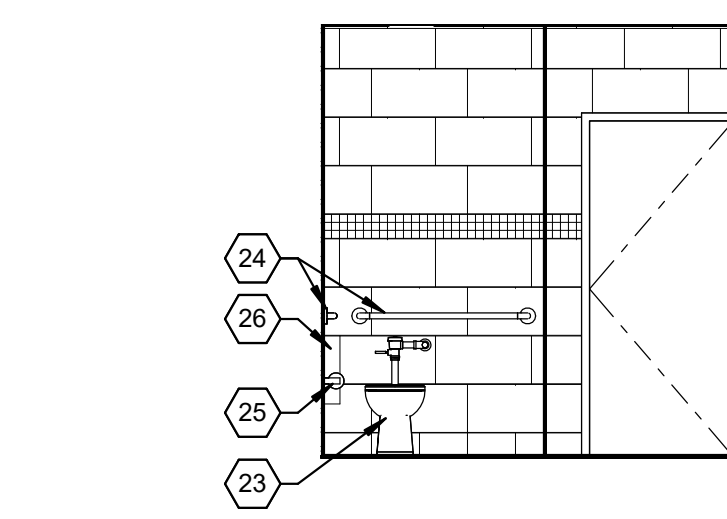
WOMEN'S LOCKER ROOM 510A NORTH
SCALE: 1/4" = 1'-0"



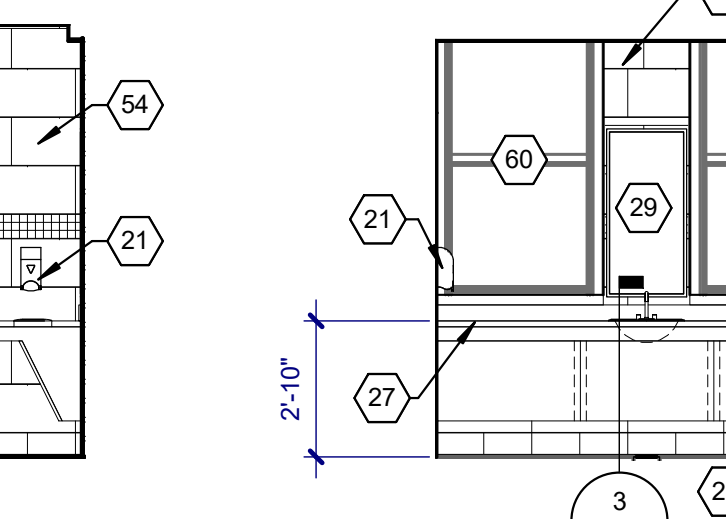
WOMEN'S LOCKER ROOM 510A EAST
SCALE: 1/4" = 1'-0"



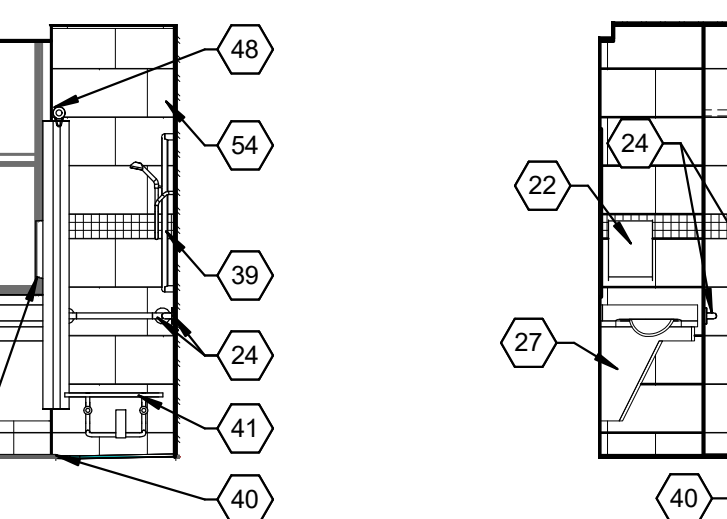
WOMEN'S TOILET 510B WEST
SCALE: 1/4" = 1'-0"



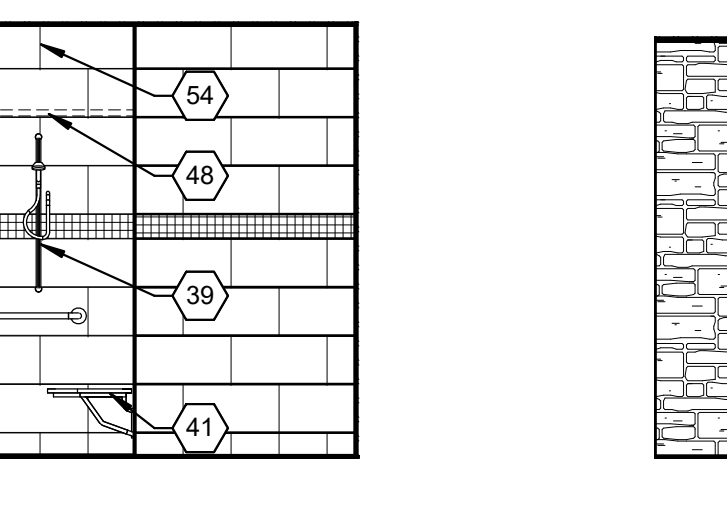
WOMEN'S TOILET 510B NORTH
SCALE: 1/4" = 1'-0"



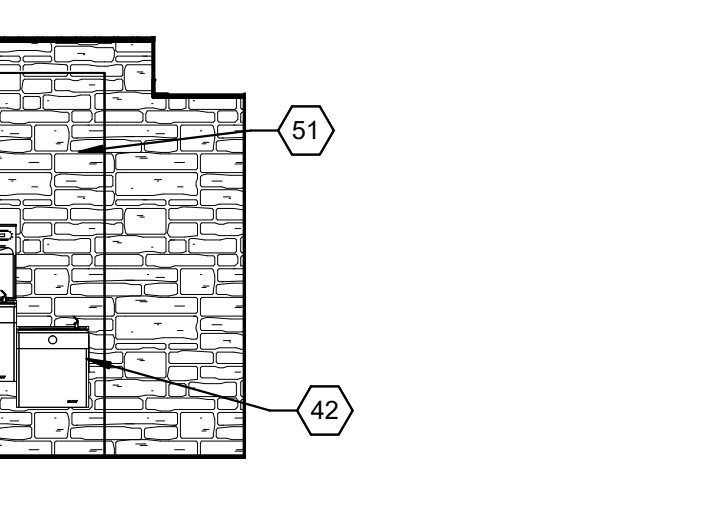
WOMEN'S TOILET 510B EAST
SCALE: 1/4" = 1'-0"



WOMEN'S TOILET 510B SOUTH
SCALE: 1/4" = 1'-0"



ENTRY LOBBY 500 WEST
SCALE: 1/4" = 1'-0"



ENTRY LOBBY 500 SOUTH
SCALE: 1/4" = 1'-0"

GENERAL NOTES:

1. PROVIDE PLASTIC LAMINATE FINISHED END PANELS AND FACES ON ALL EXPOSED CABINETS.
2. INSTALL A WATERPROOF MEMBRANE UNDER TILE AT SHOWER FLOORS AND WALLS.

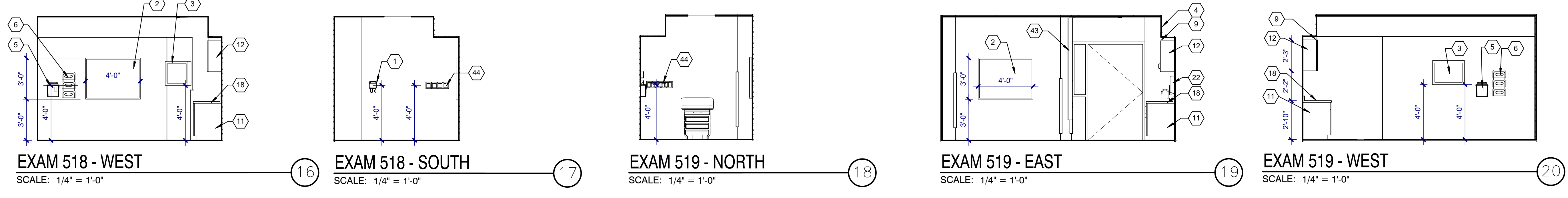
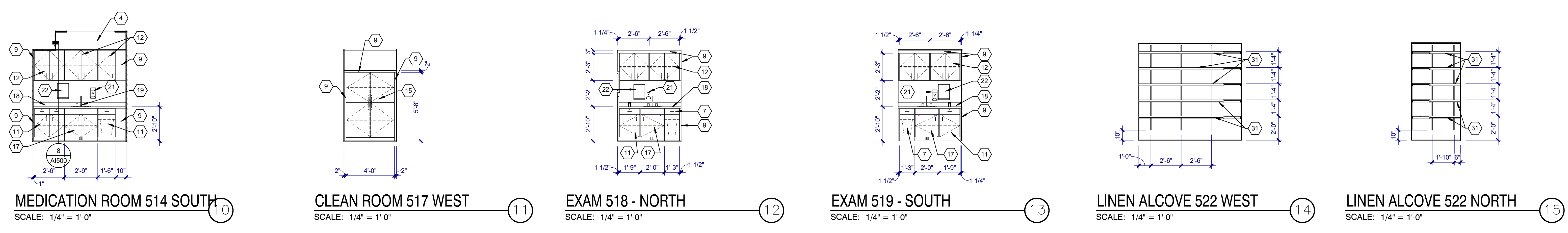
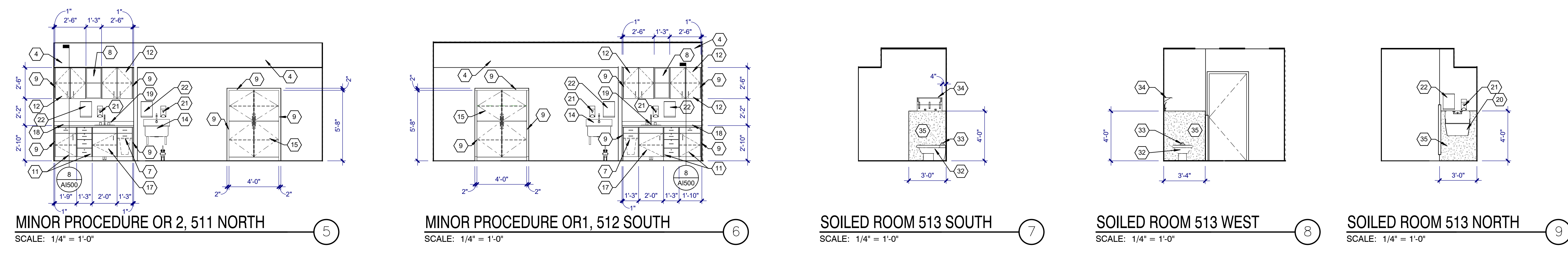
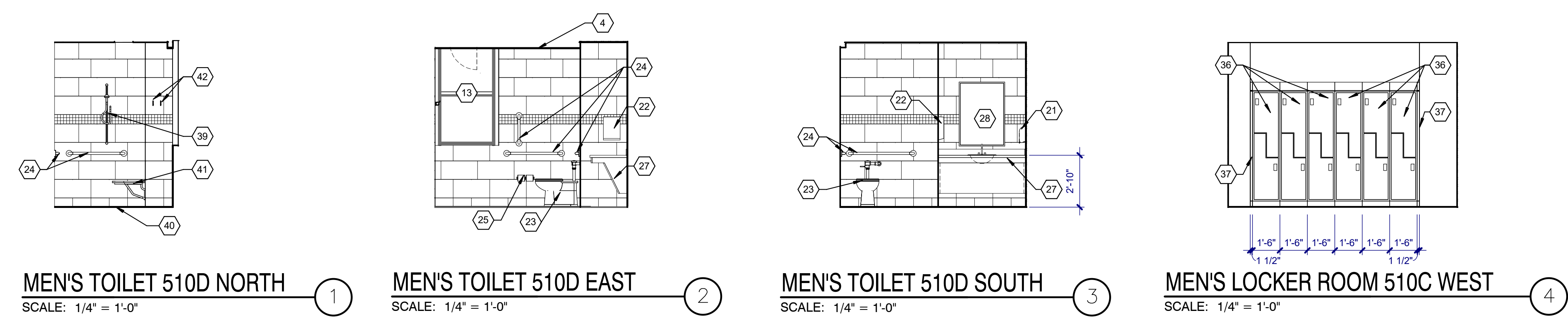
100% CONSTRUCTION DRAWINGS

CONSULTANTS: WPE WEST PLAINS ENGINEERING 4609 SOUTH TECHLINK CIRCLE • SIOUX FALLS, SD 57106 PHONE: (605) 362-3753 • FAX: (605) 362-3759 RAPID CITY, SD • SIOUX FALLS, SD • CASPER, WY • CEDAR RAPIDS, IA • BISMARCK, ND	SEAL: 	ARCHITECT: MSH ARCHITECTS 625 S. MINNESOTA AVENUE, SUITE 204 SIOUX FALLS, SOUTH DAKOTA 57104-4873 TELE: (605) 332-7850 FAX: (605) 332-3539	Drawing Title INTERIOR ELEVATIONS	Project Title V.A. HEALTH CARE SYSTEM RENOVATE 5TH FLOOR SURGERY	Project Number 438-15-201	Office of Construction and Facilities Management 	
			Approved: Project Director	Location SIOUX FALLS, SOUTH DAKOTA	Building Number 5		Drawing Number 5-AI200
Revisions: _____ Date _____				Date OCTOBER 11, 2017	Checked DGS	Drawn AAD	Dwg. 12 of 60

three inches = one foot
 one and one half inches = one foot
 one inch = one foot
 one quarter inch = one foot
 three quarters inch = one foot
 one half inch = one foot
 one quarter inch = one foot
 three eighths inch = one foot
 one eighth inch = one foot
 one quarter inch = one foot
 one eighth inch = one foot

- KEYNOTES:**
- 1 BLOOD PRESSURE
 - 2 FABRIC COVERED CORK TACK SURFACE
 - 3 X-RAY
 - 4 GYPSUM BOARD SOFFIT
 - 5 SHARPS CONTAINER
 - 6 GLOVE HOLDERS
 - 7 24" DEEP PLASTIC LAMINATE BASE CABINET WITH WIRE PULLS, KEYED LOCKS, AND GARBAGE DRAWER
 - 8 12" DEEP PLASTIC LAMINATE OPEN UPPER CABINET WITH ADJUSTABLE SHELVES
 - 9 PLASTIC LAMINATE FILLER PANEL. SCRIBE TO WALL
 - 10 GLOVE HOLDERS
 - 11 24" DEEP PLASTIC LAMINATE BASE CABINET WITH WIRE PULLS, KEYED LOCKS, AND ADJUSTABLE SHELVING AND/OR DRAWERS
 - 12 12" DEEP PLASTIC LAMINATE UPPER CABINET WITH WIRE PULLS, KEYED LOCKS, ADJUSTABLE SHELVING AND/OR DRAWERS
 - 13 REPLACE GLAZING IN THIS WINDOW WITH NEW FROSTED OBSCURED GLAZING (SEE WINDOW TYPES ON A1033) FOR SIZE.
 - 14 STAINLESS STEEL WALL MOUNTED SCRUBHANDWASH SINK WITH FOOT CONTROL VALVE (SEE PLUMBING DRAWINGS)
 - 15 68" TALL X 48" WIDE X 22" DEEP DOUBLE DOOR PLASTIC LAMINATE CABINET WITH WIRE PULLS, KEYED LOCKS, AND ADJUSTABLE SHELVING
 - 16 NOT USED THIS SHEET
 - 17 24" DEEP PLASTIC LAMINATE SINK BASE CABINET WITH FOOT PEDAL MIXING VALVE, WIRE PULLS, KEYED LOCKS, AND ADJUSTABLE SHELVING
 - 18 PLASTIC LAMINATE COUNTERTOP WITH BACKSPLASH. SCRIBE TO WALL
 - 19 HANDSINK. SEE PLUMBING
 - 20 SERVICE SINK. SEE PLUMBING
 - 21 SOAP DISPENSER. FURNISHED BY OWNER, INSTALLED BY CONTRACTOR
 - 22 PAPER TOWEL DISPENSER. FURNISHED BY OWNER, INSTALLED BY CONTRACTOR
 - 23 FLOOR MOUNTED FLUSH VALVE WATER CLOSET. SEE PLUMBING
 - 24 1 1/2" DIAMETER GRAB BAR. SEE STRUCTURAL FOR MOUNTING DETAIL. PROVIDE BACKING AS REQUIRED
 - 25 TOILET PAPER DISPENSER. FURNISHED BY OWNER, INSTALLED BY CONTRACTOR
 - 26 NOT USED THIS SHEET
 - 27 SOLID SURFACE VANITY WITH INTEGRAL LAVATORY SINK.
 - 28 30" WIDE X 42" HIGH MIRROR
 - 29 NOT USED THIS SHEET
 - 30 NOT USED THIS SHEET
 - 31 18" DEEP ADJUSTABLE PLASTIC LAMINATE SHELVING ON STANDARD WALL BRACKETS
 - 32 MOP SINK. SEE PLUMBING
 - 33 FAUCET. SEE PLUMBING
 - 34 MOP AND BROOM HOLDER WITH INTEGRAL SHELF
 - 35 FIBERGLASS REINFORCED PLASTIC PANEL
 - 36 18" WIDE X 18" DEEP X 72" HIGH DOUBLE TIER 2" CONFIGURATION. PLASTIC LOCKER WITH INTEGRAL BASE AND SLOPED TOP
 - 37 PREFINISHED METAL LOCKER FILLER PANEL
 - 38 NOT USED THIS SHEET
 - 39 ADA HANDHELD ADJUSTABLE SHOWER HEAD. SEE PLUMBING
 - 40 SHOWER TILE FLOORING AND MEMBRANE. SLOPE FLOOR TO PROVIDE PROPER SLOPE TO DRAIN
 - 41 ADA WALL-MOUNTED FOLDING SHOWER SEAT. PROVIDE BACKING AS REQUIRED
 - 42 COAT/TOWEL HOOK
 - 43 CUBICLE CURTAIN, TRACK AND HOOKS
 - 44 MEDICAL GAS STATION (SEE MECHANICAL DRAWINGS)

- GENERAL NOTES:**
1. PROVIDE PLASTIC LAMINATE FINISHED END PANELS AND FACES ON ALL EXPOSED CABINETS.
 2. INSTALL A WATERPROOF MEMBRANE UNDER TILE AT SHOWER FLOORS AND WALLS.



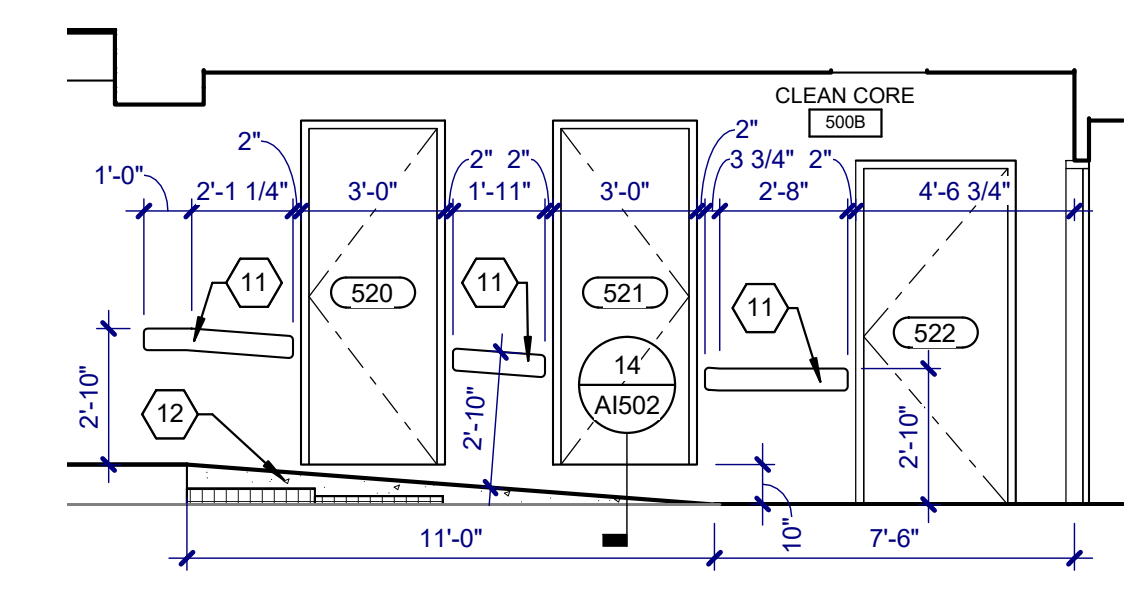
100% CONSTRUCTION DRAWINGS

Drawing Title INTERIOR ELEVATIONS		Project Title V.A. HEALTH CARE SYSTEM RENOVATE 5TH FLOOR SURGERY		Project Number 438-15-201	
Approved: Project Director		Location SIoux FALLS, SOUTH DAKOTA		Building Number 5	
Date OCTOBER 11, 2017		Checked DGS		Drawn AAD	
		Drawing Number 5-A1201		Dwg. 13 of 60	

Office of Construction and Facilities Management
 Department of Veterans Affairs

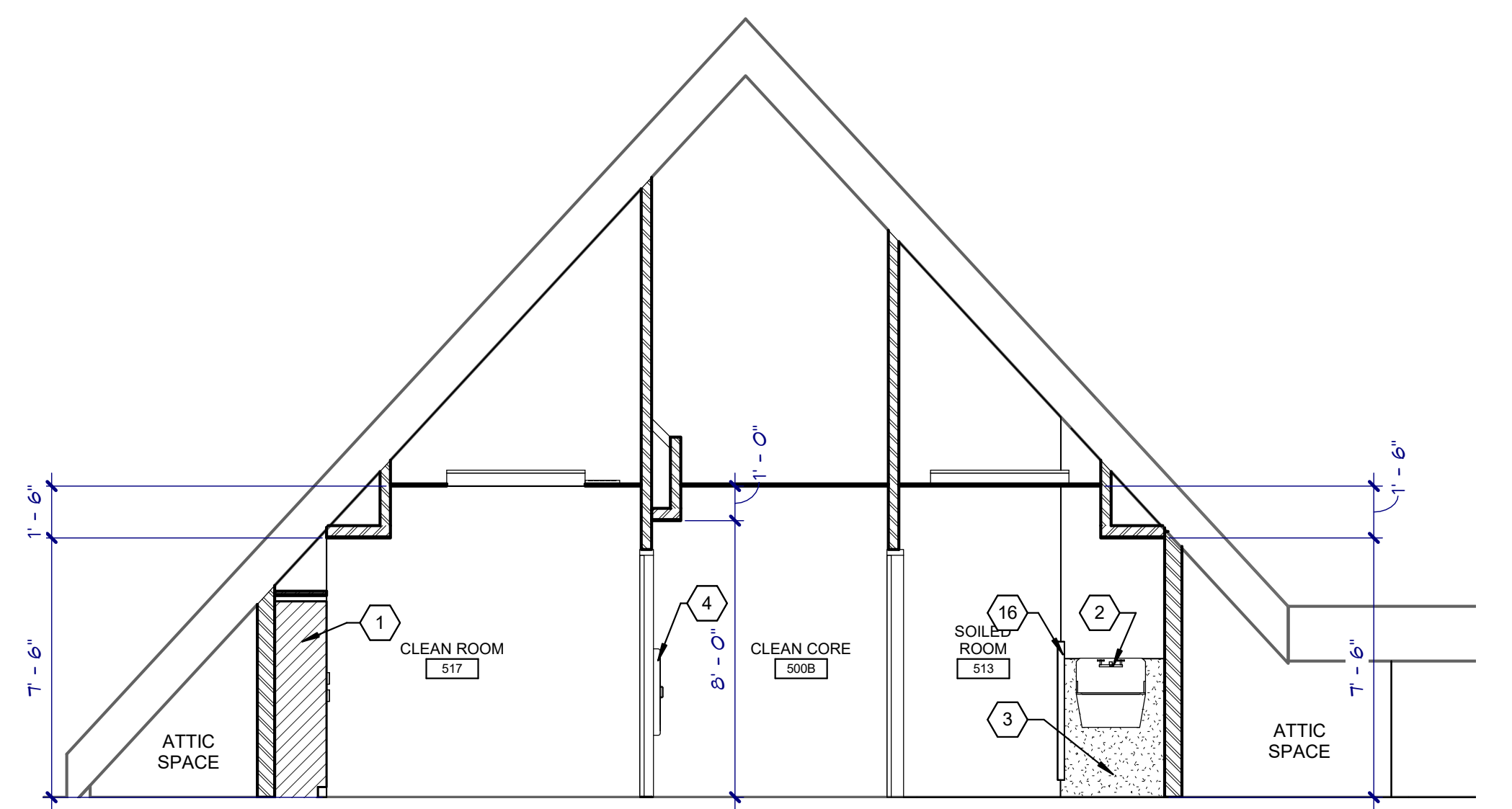
CONSULTANTS: 4609 SOUTH TECHLINK CIRCLE • SIOUX FALLS, SD 57106 PHONE: (605) 362-3753 • FAX: (605) 362-3759 RAPID CITY, SD • SIOUX FALLS, SD • CASPER, WY • CEDAR RAPIDS, IA • BISMARCK, ND	 101 Railroad Ave. • PO Box 39 Harrisburg, SD 57032 (605) 743-2510 fax (605) 743-2513	SEAL: 	ARCHITECT: 625 S. MINNESOTA AVENUE, SUITE 204 SIOUX FALLS, SOUTH DAKOTA 57104-4873 TELE: (605) 332-7850 FAX: (605) 332-3539	Revisions: _____ Date _____
--	---	-----------	--	-----------------------------

three inches = one foot
 one and one half inches = one foot
 one inch = one foot
 three quarters inch = one foot
 one half inch = one foot
 three eighths inch = one foot
 one quarter inch = one foot
 one eighth inch = one foot
 one eighth inch = one foot

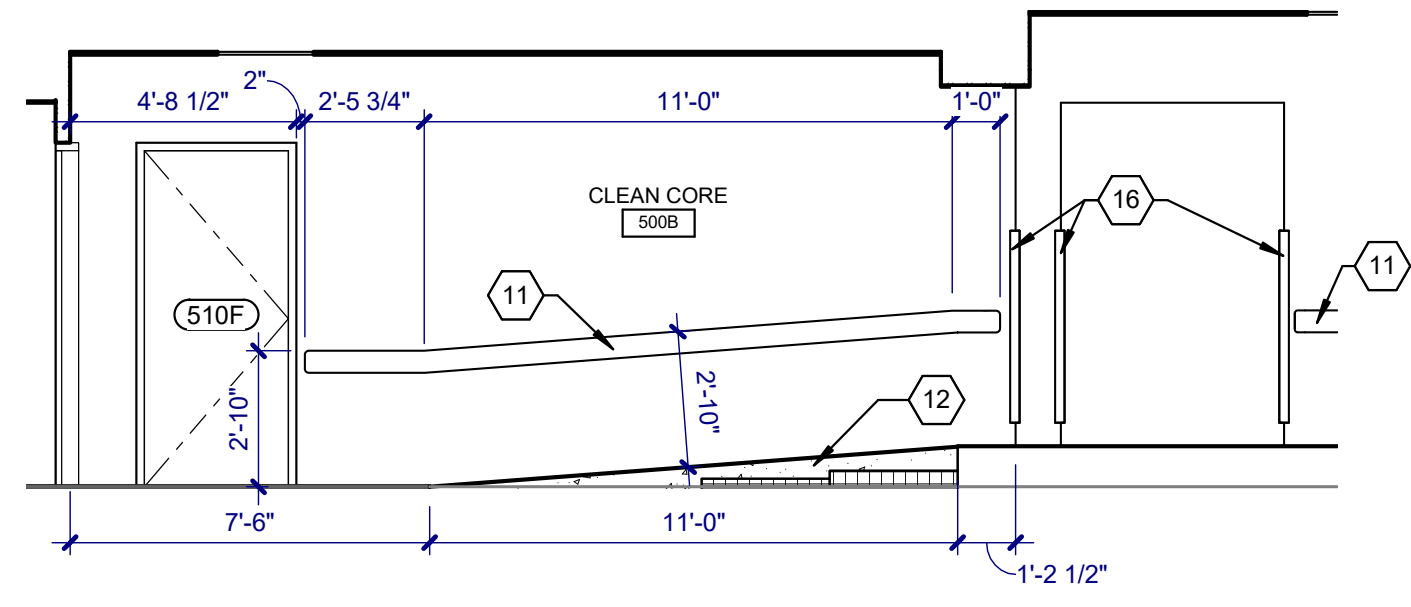


NOTE: THIS RAMP DOES NOT COMPLY WITH CODE REQUIREMENTS FOR CONTINUITY OF HANDRAILS ON BOTH SIDES NFPA 101 - 7.2.2.4.2. HANDRAILS ON THIS SIDE ARE INTERRUPTED BY DOORS TO DATA AND ELECTRICAL ROOMS. THE VA HAS INDICATED THAT THIS NON-COMPLIANT CODE CONDITION IS ACCEPTABLE.

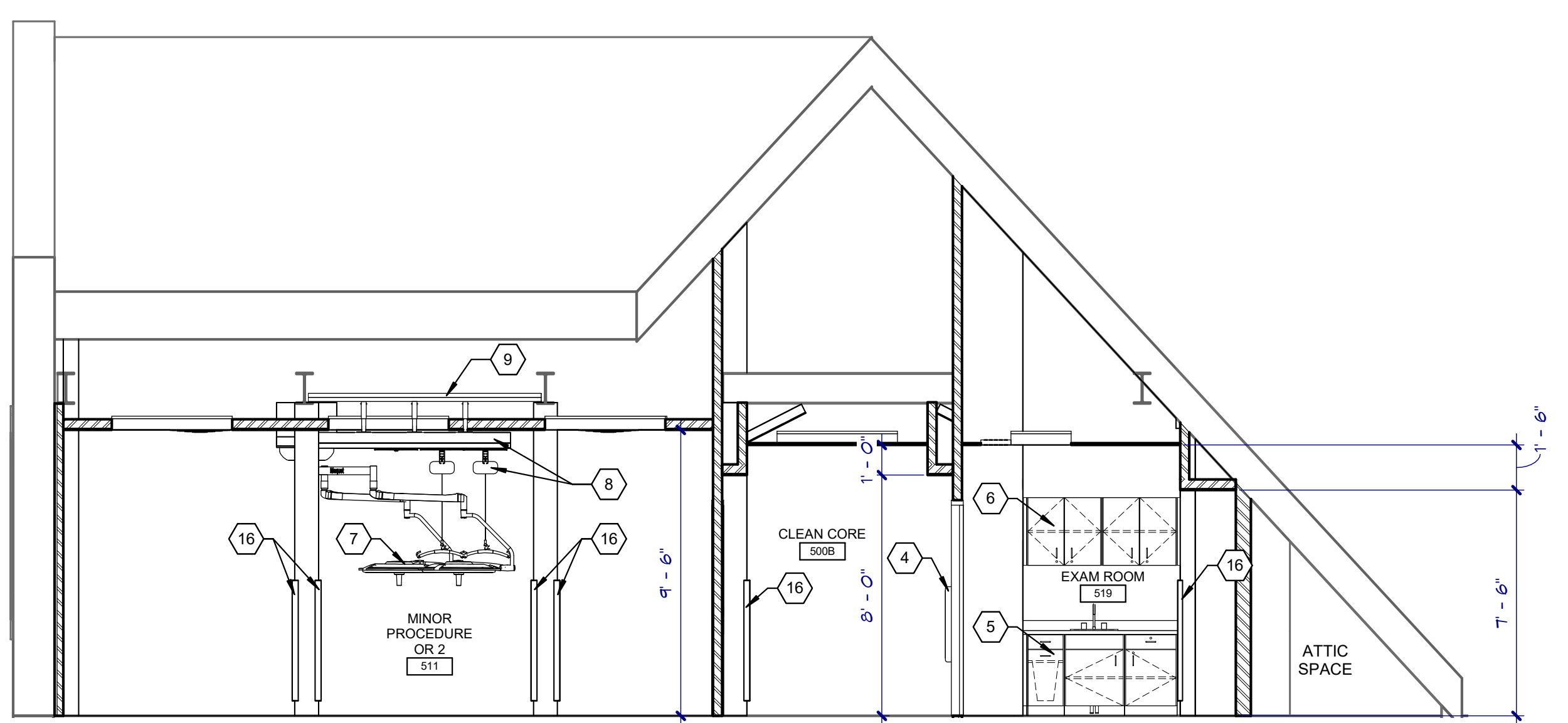
BUILDING SECTION - FLOOR LEVEL CHANGE
 SCALE: 1/4" = 1'-0"



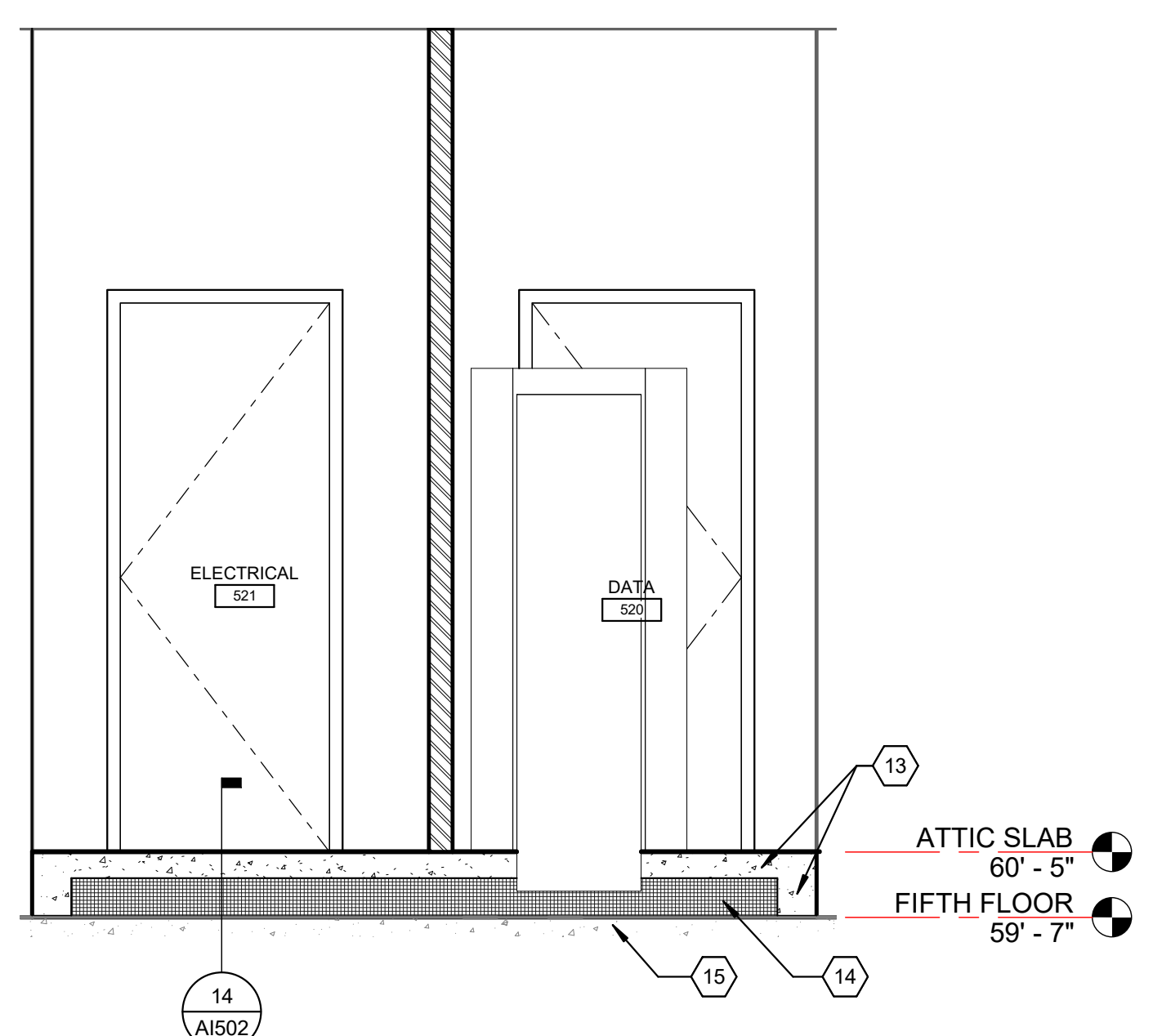
BUILDING SECTION
 SCALE: 1/4" = 1'-0"



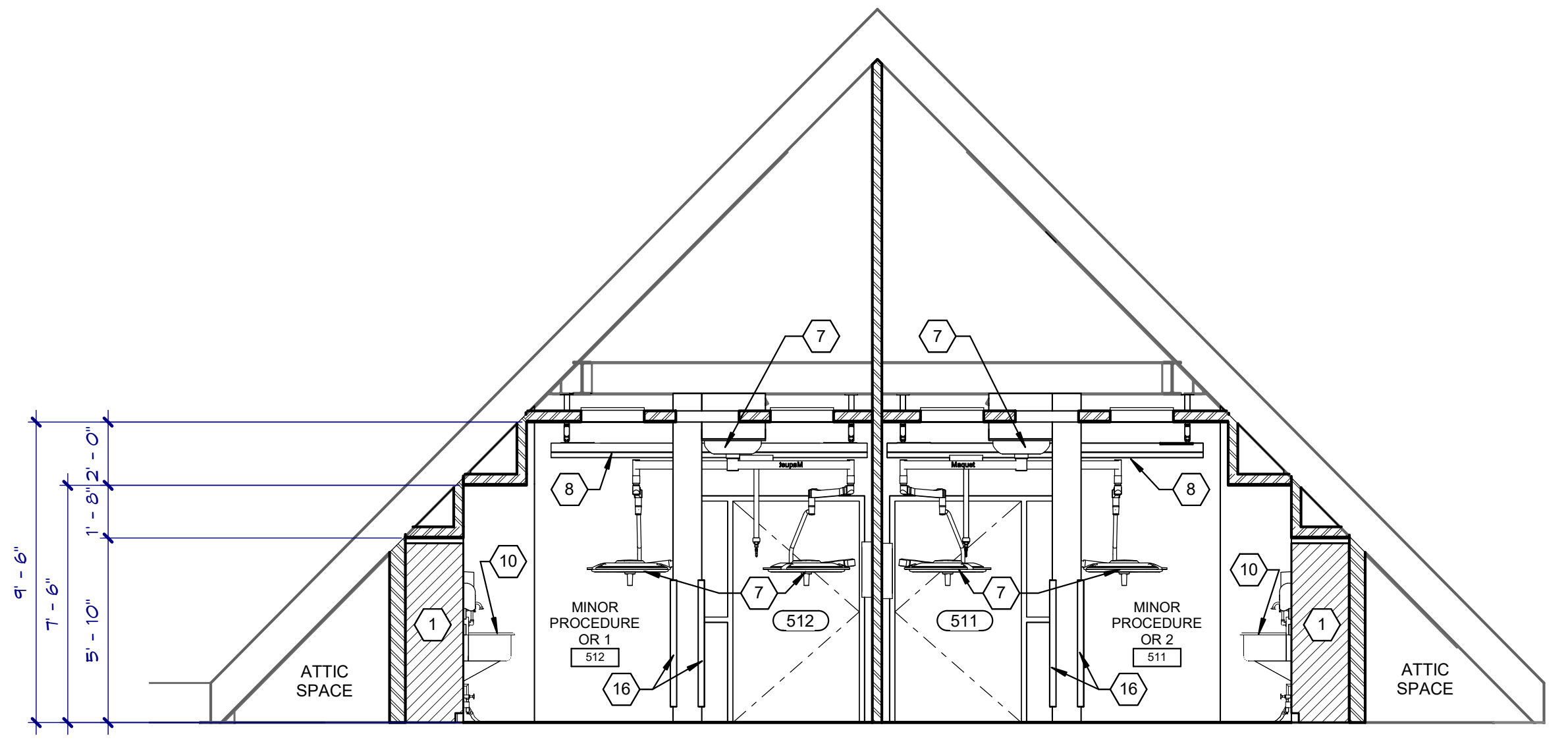
BUILDING SECTION - FLOOR LEVEL CHANGE
 SCALE: 1/4" = 1'-0"



BUILDING SECTION
 SCALE: 1/4" = 1'-0"



BUILDING SECTION
 SCALE: 1/2" = 1'-0"



BUILDING SECTION
 SCALE: 1/4" = 1'-0"

- KEYNOTES:**
- 1 68" TALL X 48" WIDE X 22" DEEP DOUBLE DOOR PLASTIC LAMINATE CABINET WITH WIRE PULLS, KEYPED LOCKS, AND ADJUSTABLE SHELVING
 - 2 SERVICE SINK (SEE PLUMBING)
 - 3 FIBERGLASS REINFORCED PLASTIC PANEL
 - 4 SEMI-RECESSED FIRE EXTINGUISHER CABINET
 - 5 24" DEEP PLASTIC LAMINATE BASE CABINETS
 - 6 12" DEEP PLASTIC LAMINATE UPPER CABINETS
 - 7 OPERATING ROOM BOOM LIGHT SALVAGED FROM EXISTING OPERATING ROOMS
 - 8 CEILING MOUNTED OVERHEAD PATIENT LIFT AND TRACK
 - 9 P1001 UNISTRUT (SEE STRUCTURAL)
 - 10 STAINLESS STEEL WALL MOUNTED SCRUB/HANDWASH SINK WITH FOOT CONTROL VALVE (SEE PLUMBING)
 - 11 HANDRAIL
 - 12 CONCRETE RAMP (SEE STRUCTURAL)
 - 13 CAST IN PLACE CONCRETE FLOOR (SEE STRUCTURAL)
 - 14 RIGID INSULATION (SEE STRUCTURAL)
 - 15 EXISTING CONCRETE FLOOR
 - 16 RESILIENT CORNER GUARD

100% CONSTRUCTION DRAWINGS

Project Title V.A. HEALTH CARE SYSTEM RENOVATE 5TH FLOOR SURGERY		Project Number 438-15-201	
Location SIoux FALLS, SOUTH DAKOTA		Building Number 5	
Date OCTOBER 11, 2017	Checked DGS	Drawn AAD	Drawing Number 5-AI300
Approved: Project Director		Dwg. 14 of 60	

Office of Construction and Facilities Management
 Department of Veterans Affairs

CONSULTANTS:

WPE WEST PLAINS ENGINEERING
 4609 SOUTH TECHLINK CIRCLE • SIOUX FALLS, SD 57106
 PHONE: (605) 362-3753 • FAX: (605) 362-3759
 RAPID CITY, SD • SIOUX FALLS, SD • CASPER, WY • CEDAR RAPIDS, IA • BISMARK, ND

RISE STRUCTURAL ASSOCIATES INC.
 101 Railroad Ave. - PO Box 39
 Harrisburg, SD 57032
 (605) 743-2510 fax (605) 743-2513

SEAL:

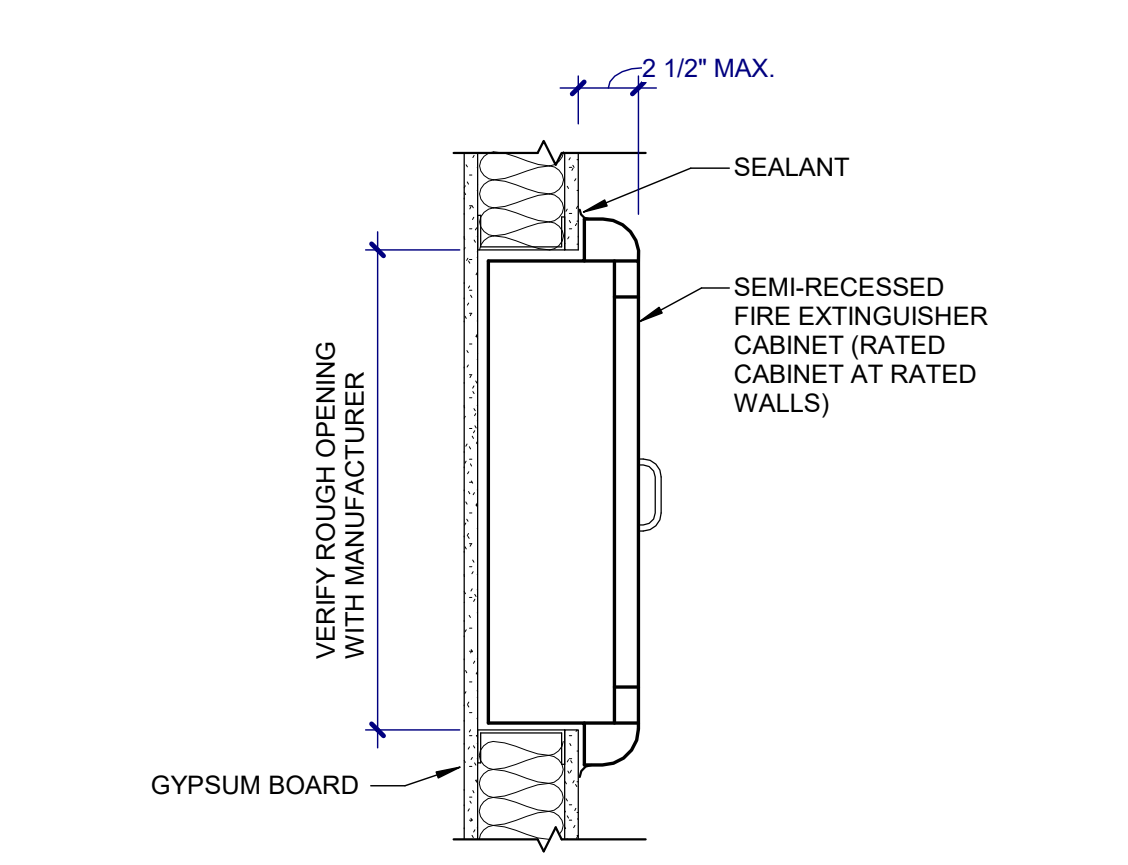
REGISTERED ARCHITECT
 REG. NO. 3907
 ROBIN J. MILLER
 SOUTH DAKOTA

ARCHITECT:

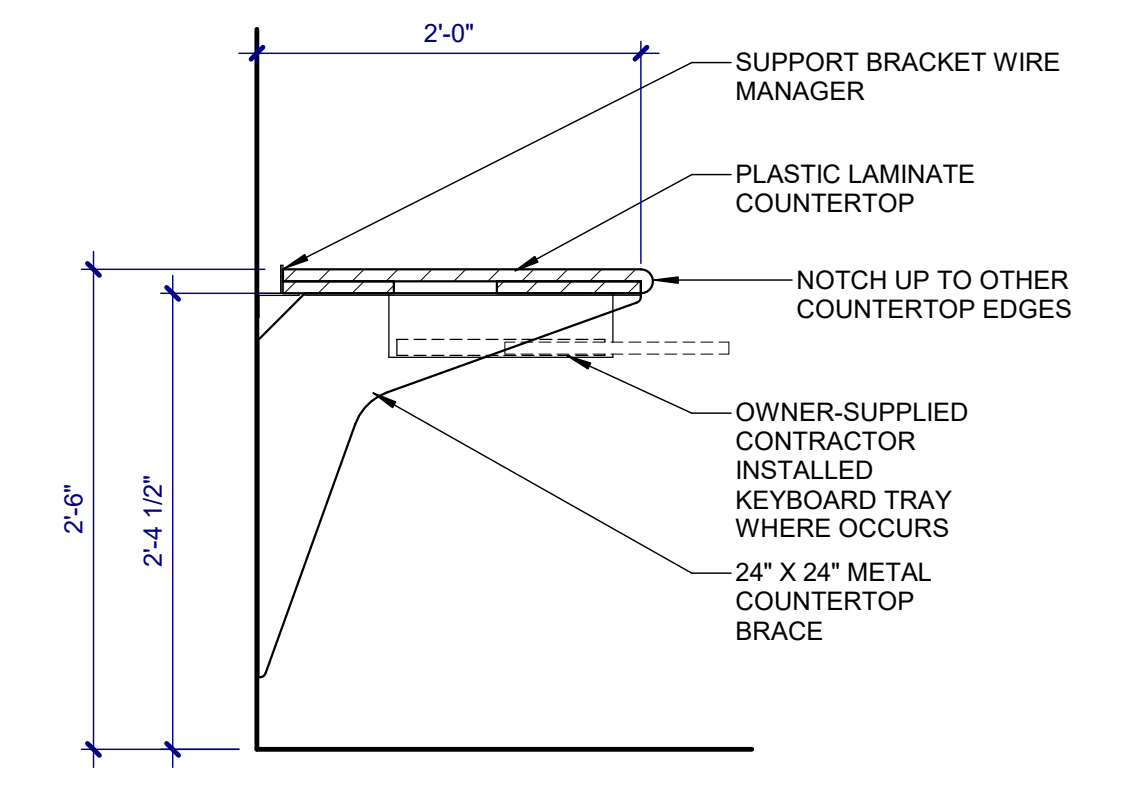
MSH ARCHITECTS
 625 S. MINNESOTA AVENUE, SUITE 204
 SIOUX FALLS, SOUTH DAKOTA 57104-4873
 TELE: (605) 332-7850 FAX: (605) 332-3539

Drawing Title
BUILDING SECTIONS

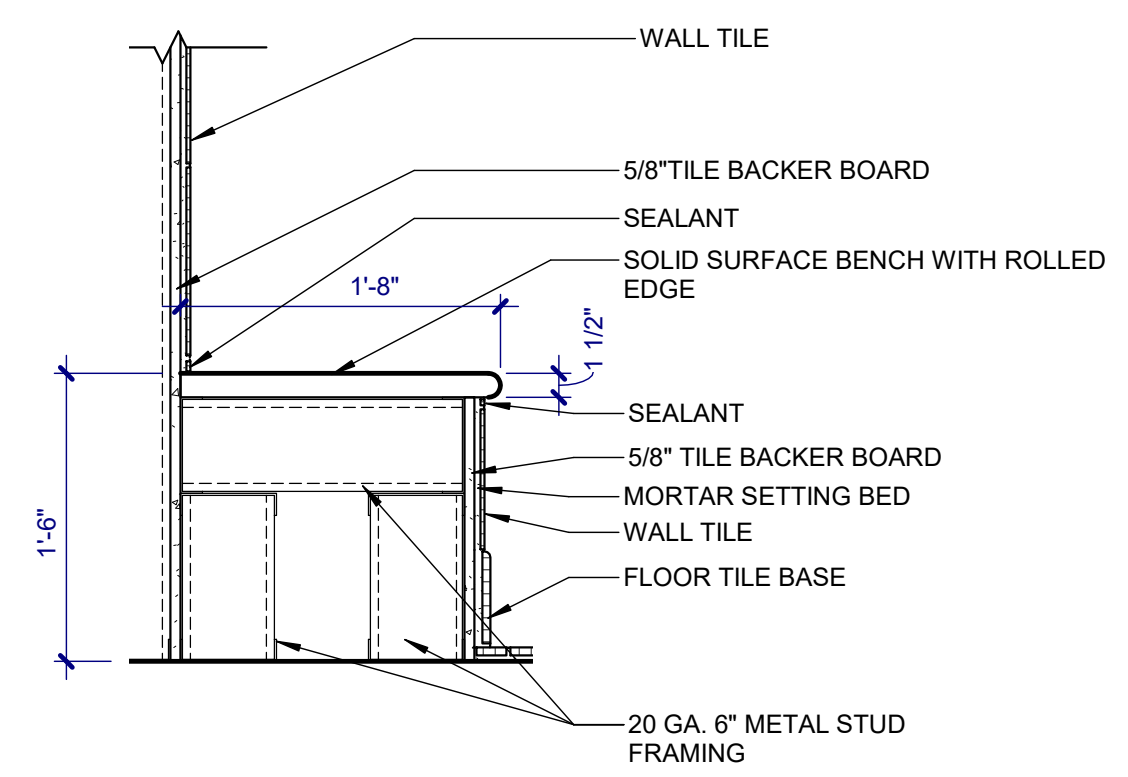
A
 three inches = one foot
 B
 one and one half inches = one foot
 C
 one inch = one foot
 D
 three quarters inch = one foot
 E
 one half inch = one foot
 F
 three eighths inch = one foot
 G
 one quarter inch = one foot
 H
 one eighth inch = one foot
 I
 one eighth inch = one foot
 J
 one eighth inch = one foot
 K
 one eighth inch = one foot
 L
 one eighth inch = one foot
 M
 one eighth inch = one foot
 N
 one eighth inch = one foot
 O
 one eighth inch = one foot
 P
 one eighth inch = one foot
 Q
 one eighth inch = one foot
 R
 one eighth inch = one foot
 S
 one eighth inch = one foot
 T
 one eighth inch = one foot
 U
 one eighth inch = one foot
 V
 one eighth inch = one foot
 W
 one eighth inch = one foot
 X
 one eighth inch = one foot
 Y
 one eighth inch = one foot
 Z
 one eighth inch = one foot



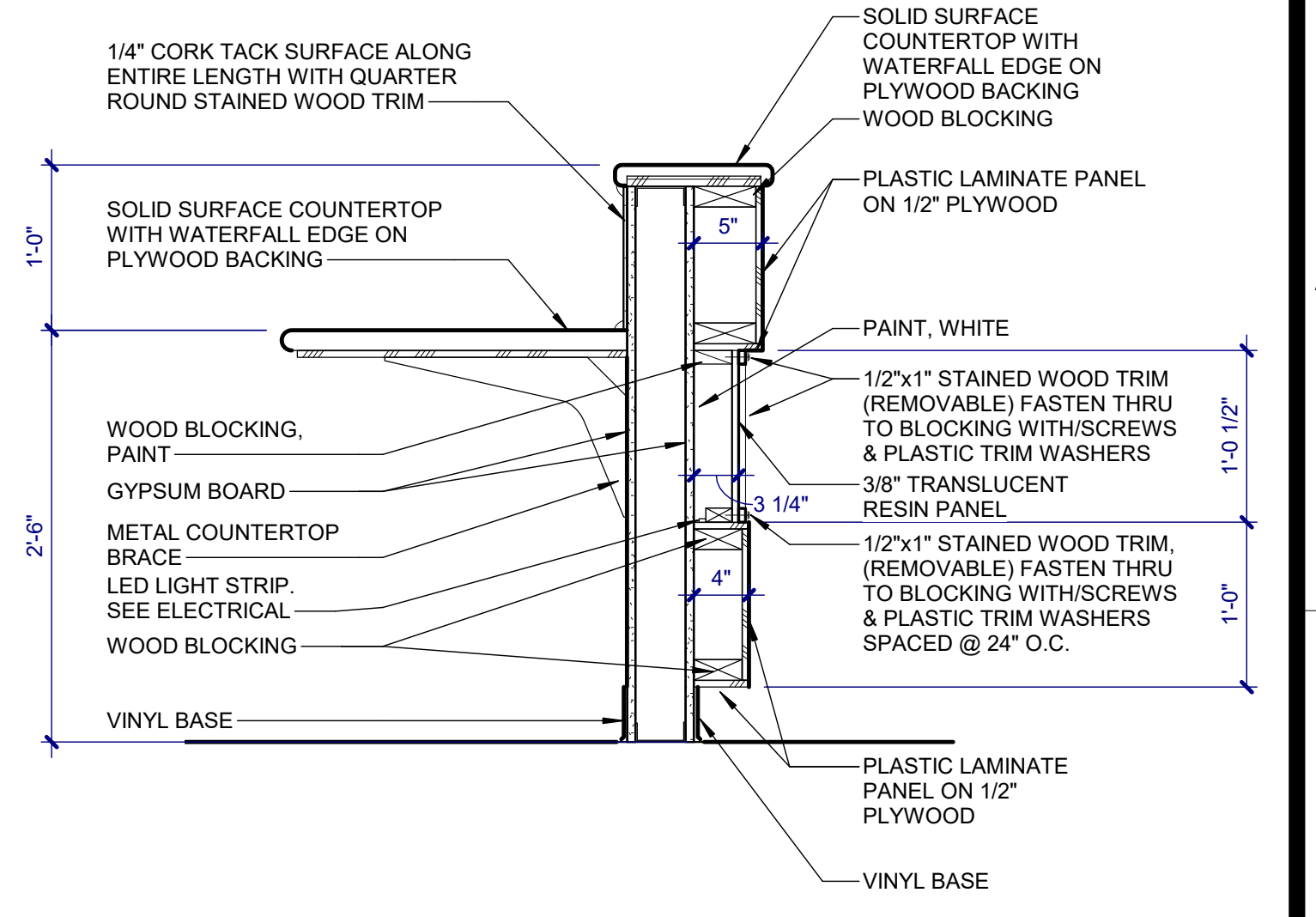
FIRE EXTINGUISHER
SCALE: 1 1/2" = 1'-0"



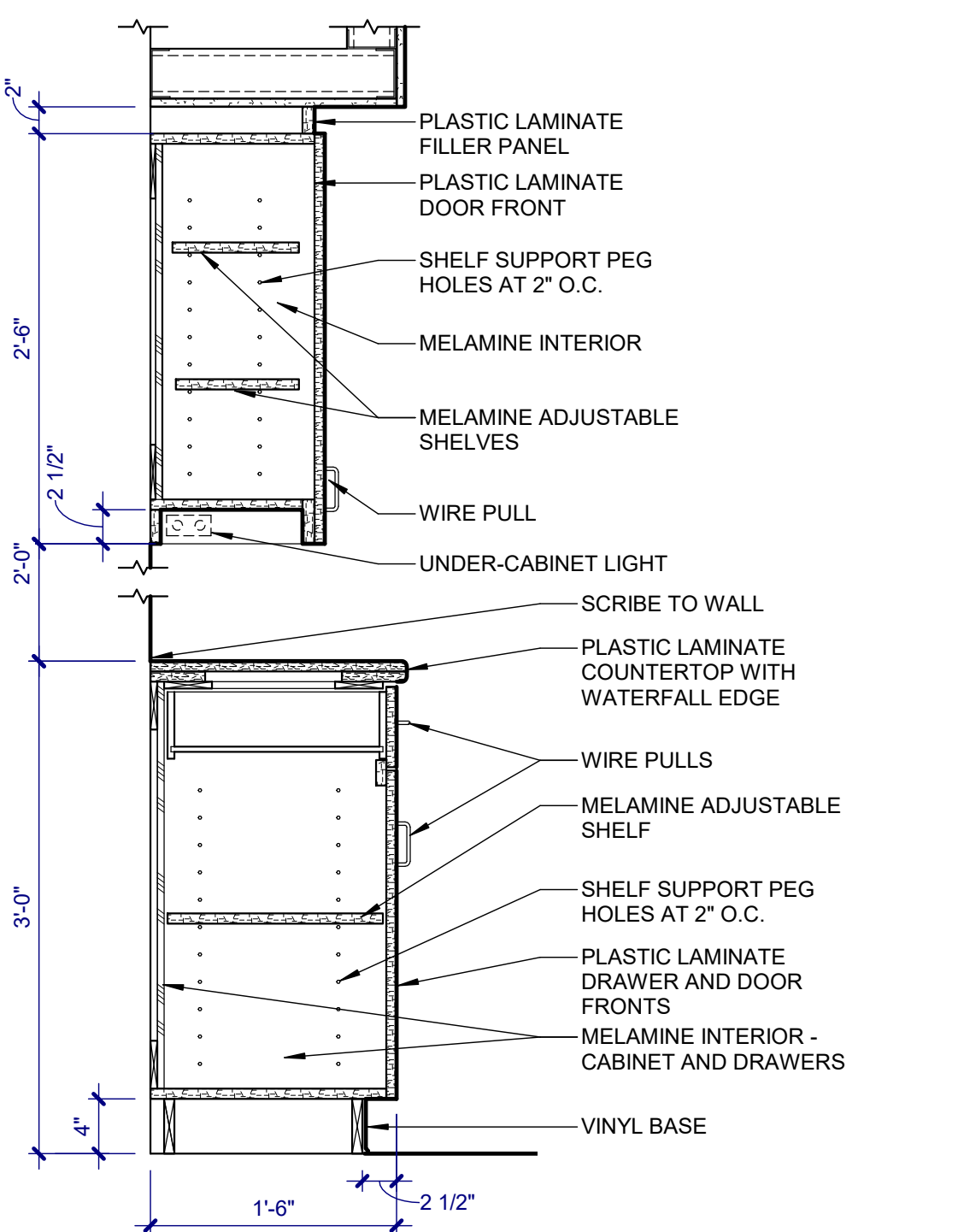
DETAIL
SCALE: 1" = 1'-0"



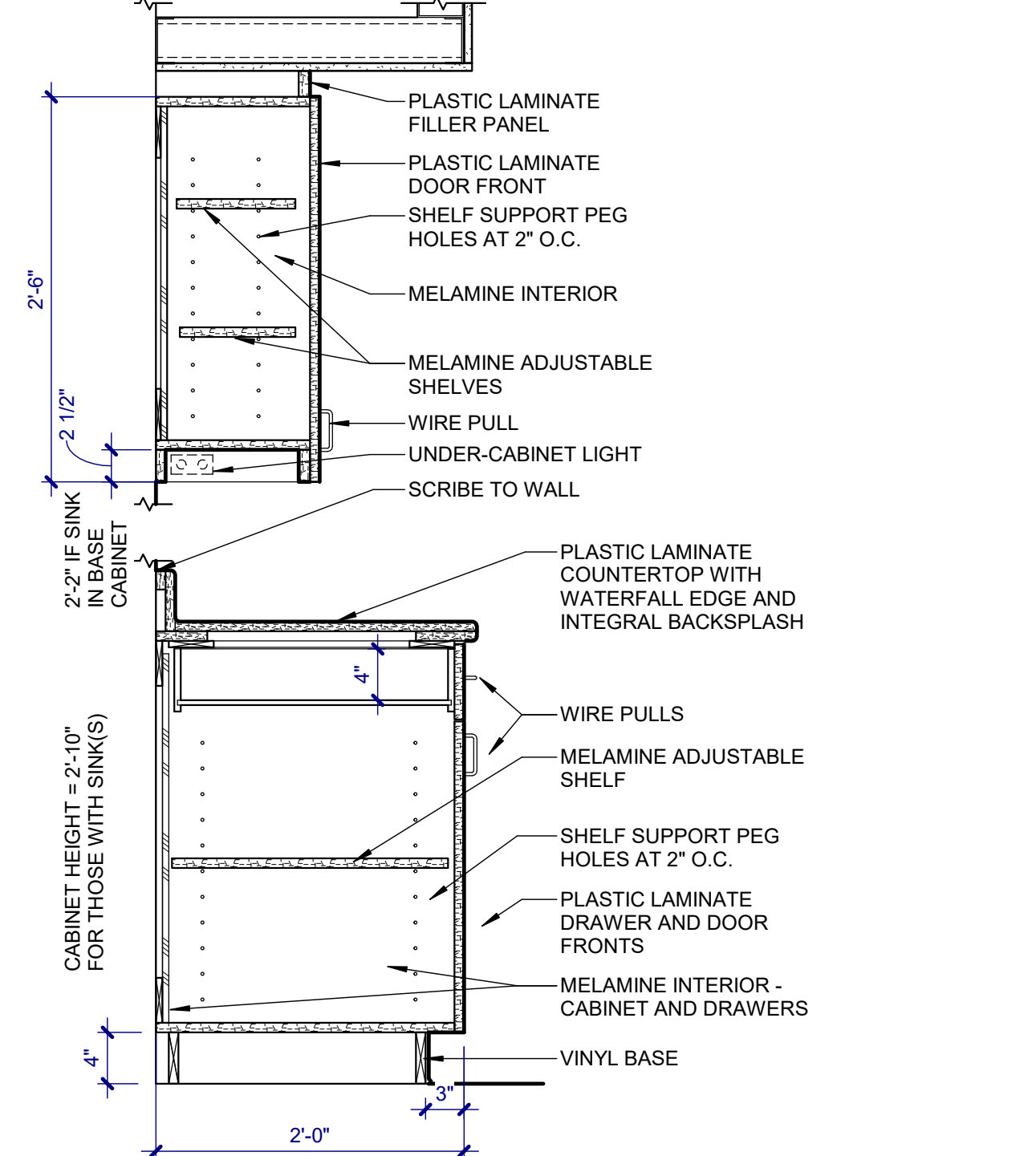
DETAIL
SCALE: 1" = 1'-0"



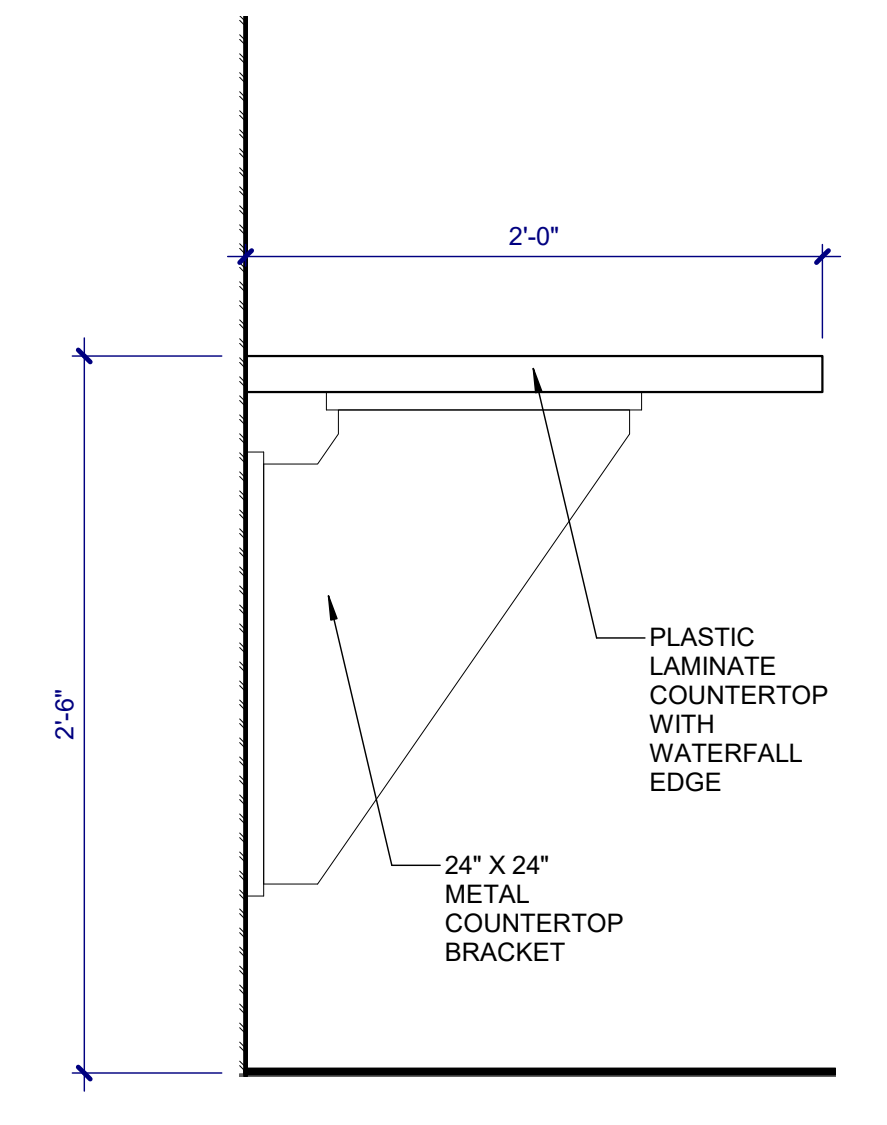
DETAIL
SCALE: 1" = 1'-0"



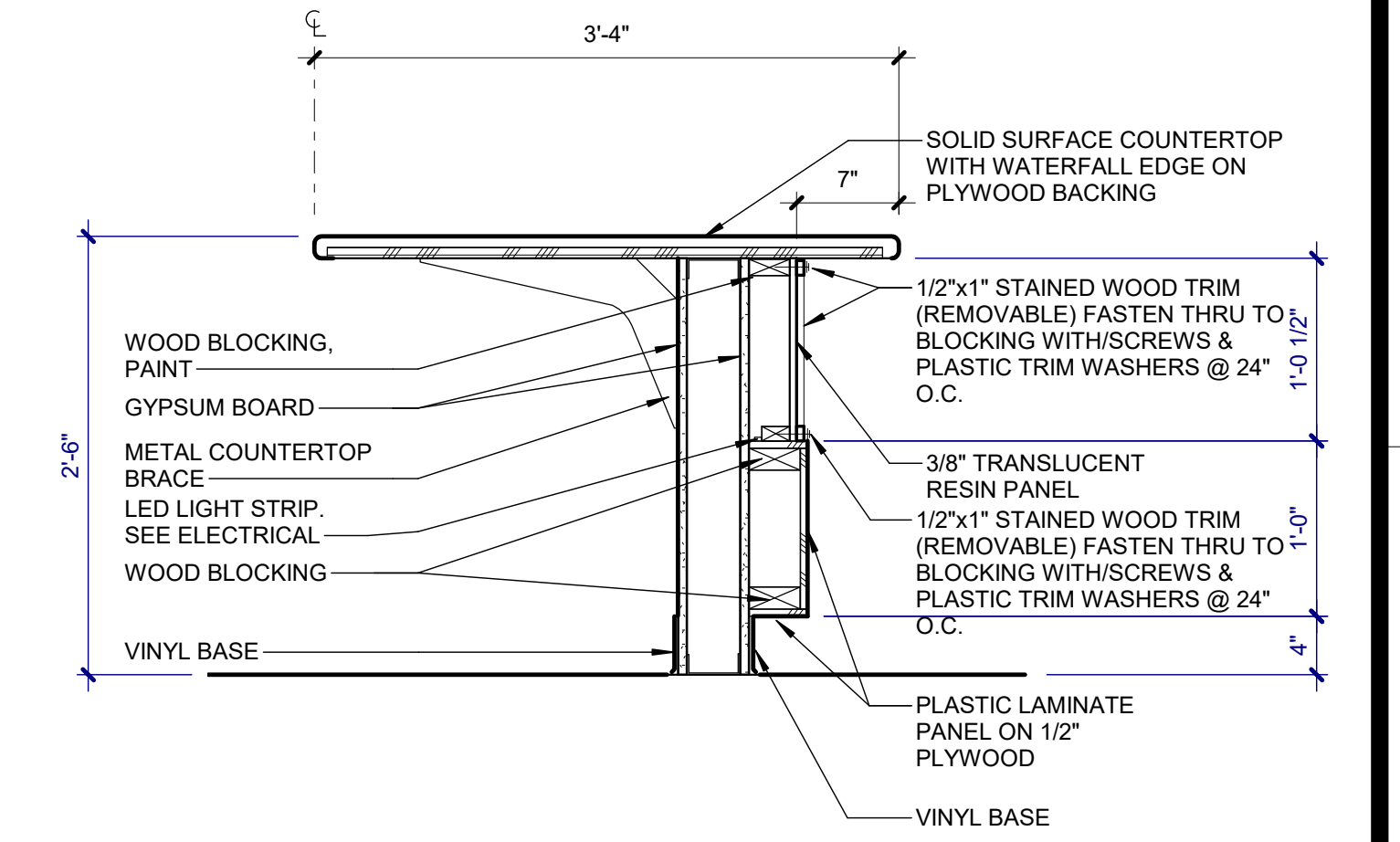
DETAIL
SCALE: 1" = 1'-0"



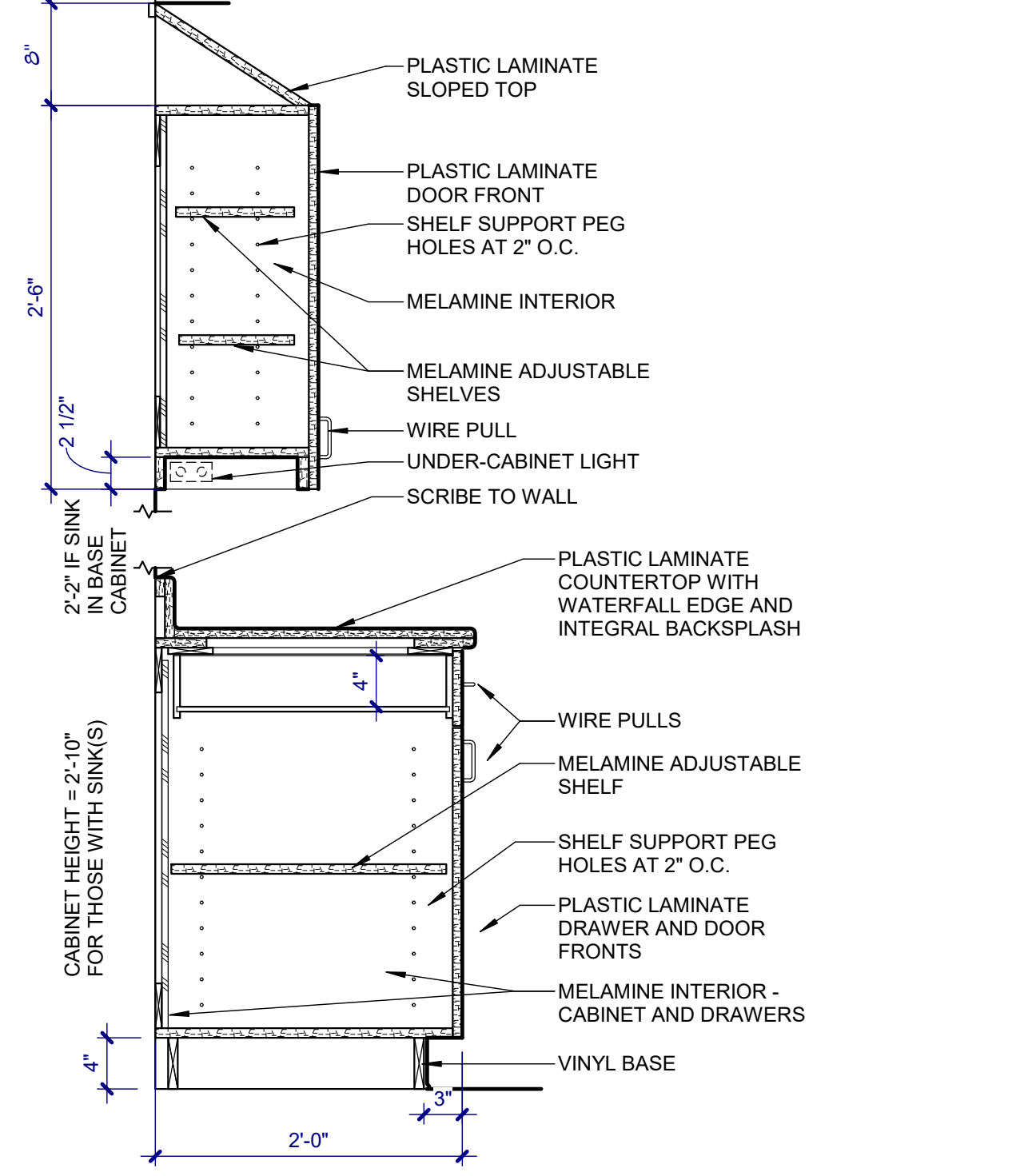
TYPICAL UPPERS AND BASE CABINET 2'-0\"/>



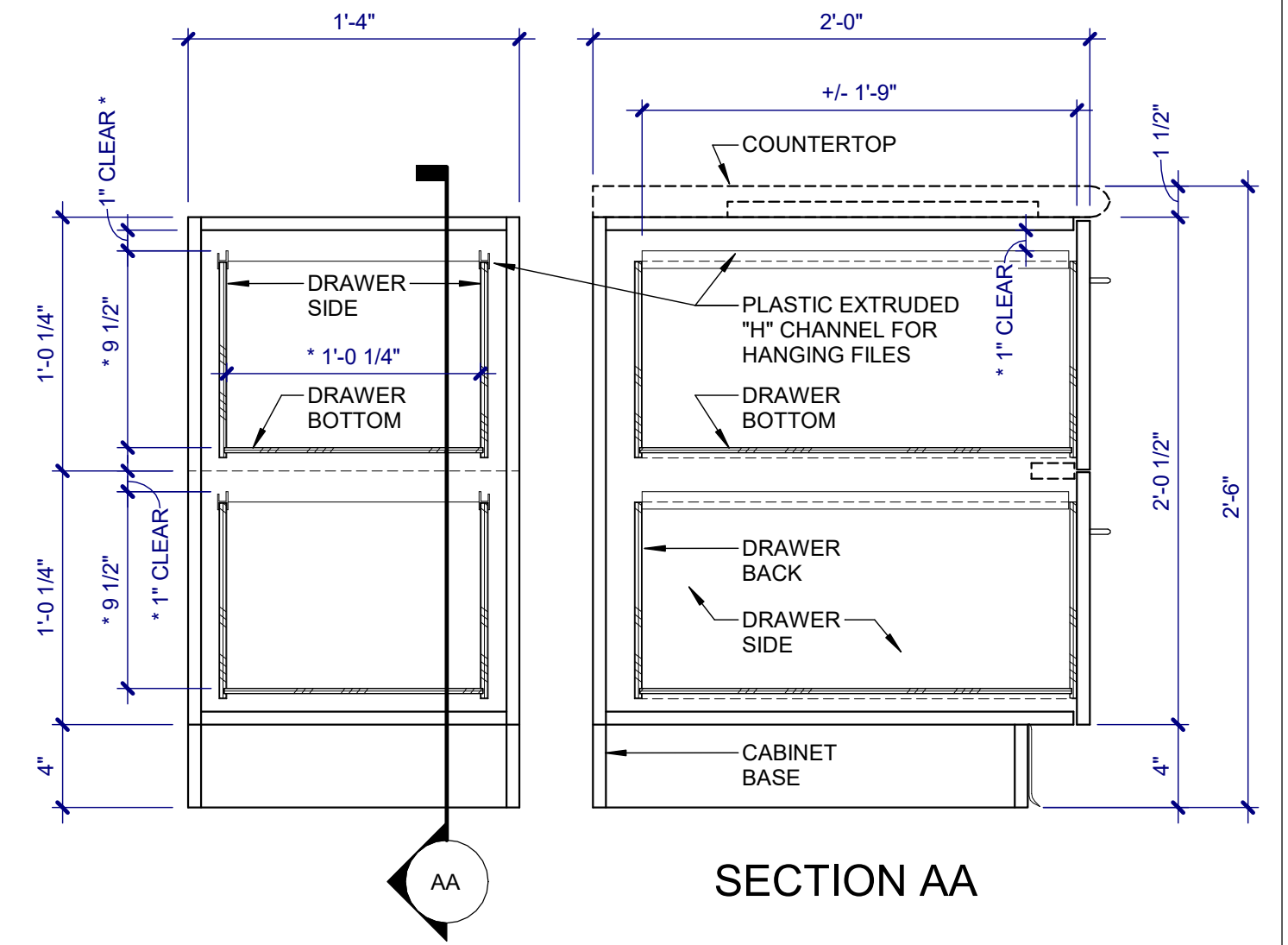
COMPUTER DESK
SCALE: 1 1/2" = 1'-0"



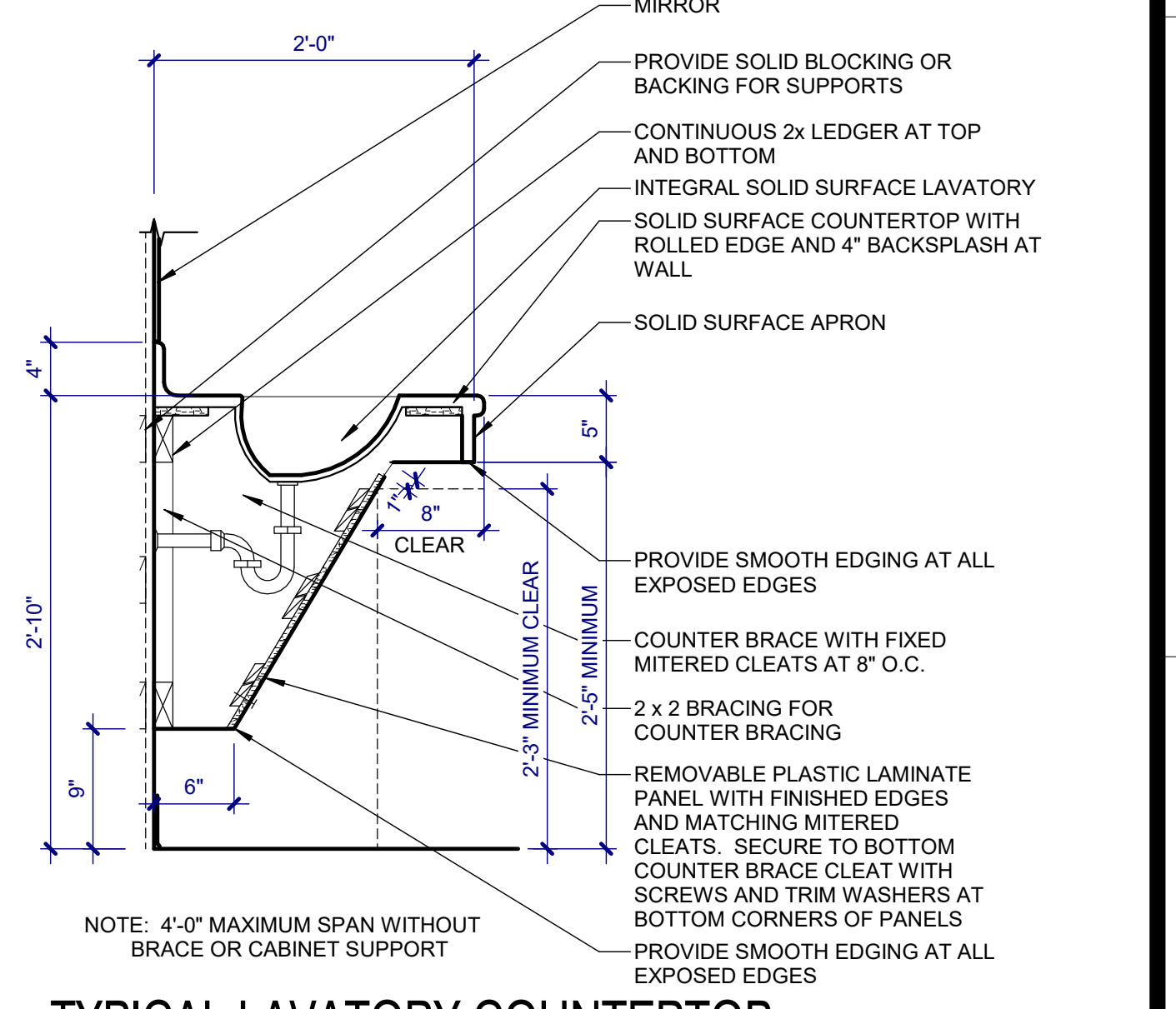
DETAIL
SCALE: 1" = 1'-0"



TYPICAL UPPERS AND BASE CABINET 2'-0\"/>



TYPICAL FILE DRAWER SECTION
SCALE: 1 1/2" = 1'-0"



TYPICAL LAVATORY COUNTERTOP
SCALE: 1" = 1'-0"

CONSULTANTS:

WPE WEST PLAINS ENGINEERING
4609 SOUTH TECHLINK CIRCLE • SIOUX FALLS, SD 57106
PHONE: (605) 362-3753 • FAX: (605) 362-3759
RAPID CITY, SD • SIOUX FALLS, SD • CASPER, WY • CEDAR RAPIDS, IA • BISMARK, ND

RISE STRUCTURAL ASSOCIATES INC.
101 Railroad Ave. - PO Box 39
Harrisburg, SD 57032
(605) 743-2510
fax (605) 743-2513

SEAL:

REGISTERED ARCHITECT
REG. NO. 3907
ROBIN J. MCLELLAN
SOUTH DAKOTA

ARCHITECT:

MSH ARCHITECTS
625 S. MINNESOTA AVENUE, SUITE 204
SIOUX FALLS, SOUTH DAKOTA 57104-4873
TELE: (605) 332-7850 FAX: (605) 332-3539

Drawing Title
CASEWORK DETAILS

Approved: Project Director

Project Title
V.A. HEALTH CARE SYSTEM RENOVATE 5TH FLOOR SURGERY

Project Number
438-15-201

Building Number
5

Drawing Number
5-AI500

Date
OCTOBER 11, 2017

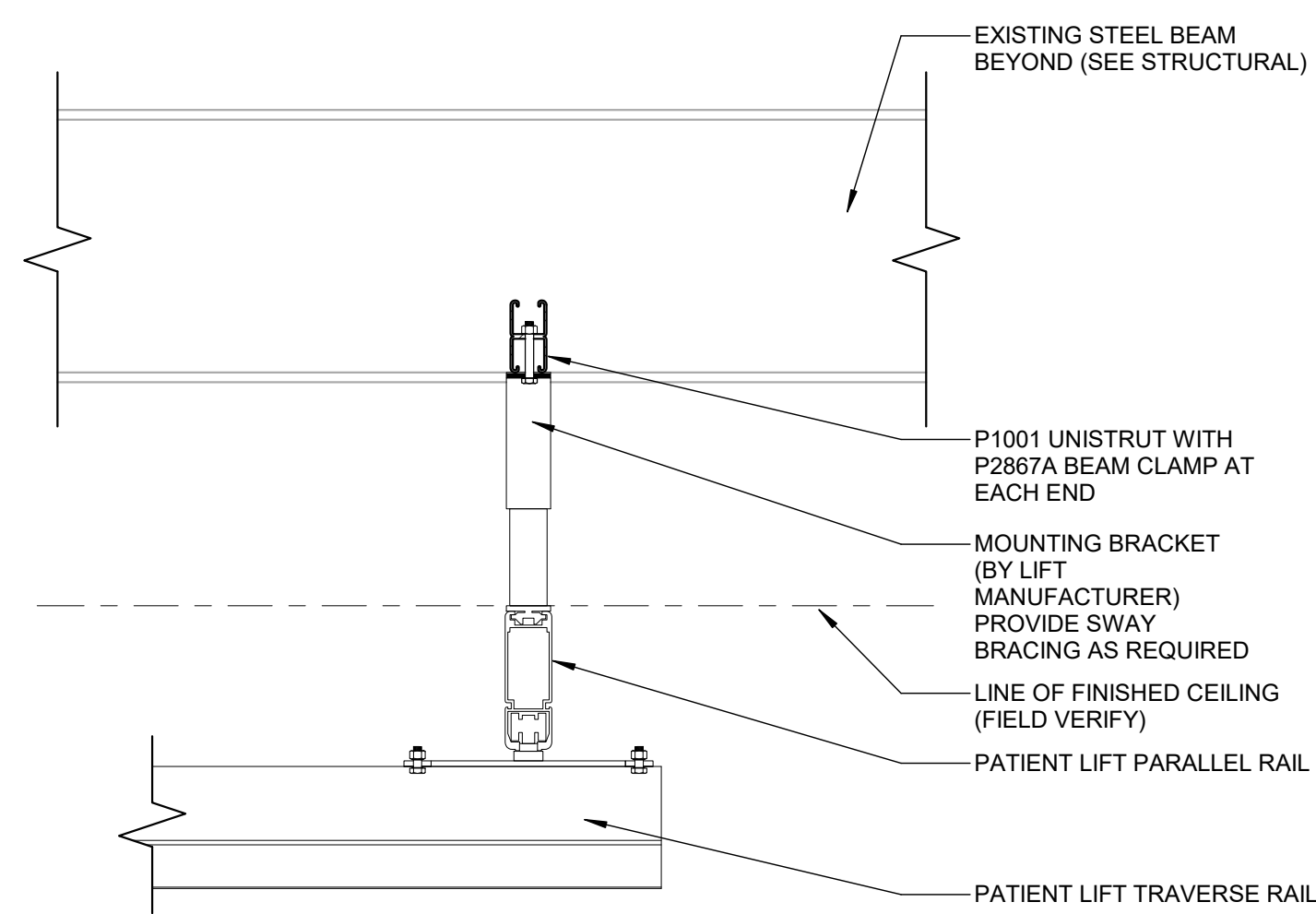
Checked
DGS

Drawn
RTG

Dwg. 15 of 60

Office of Construction and Facilities Management

Department of Veterans Affairs



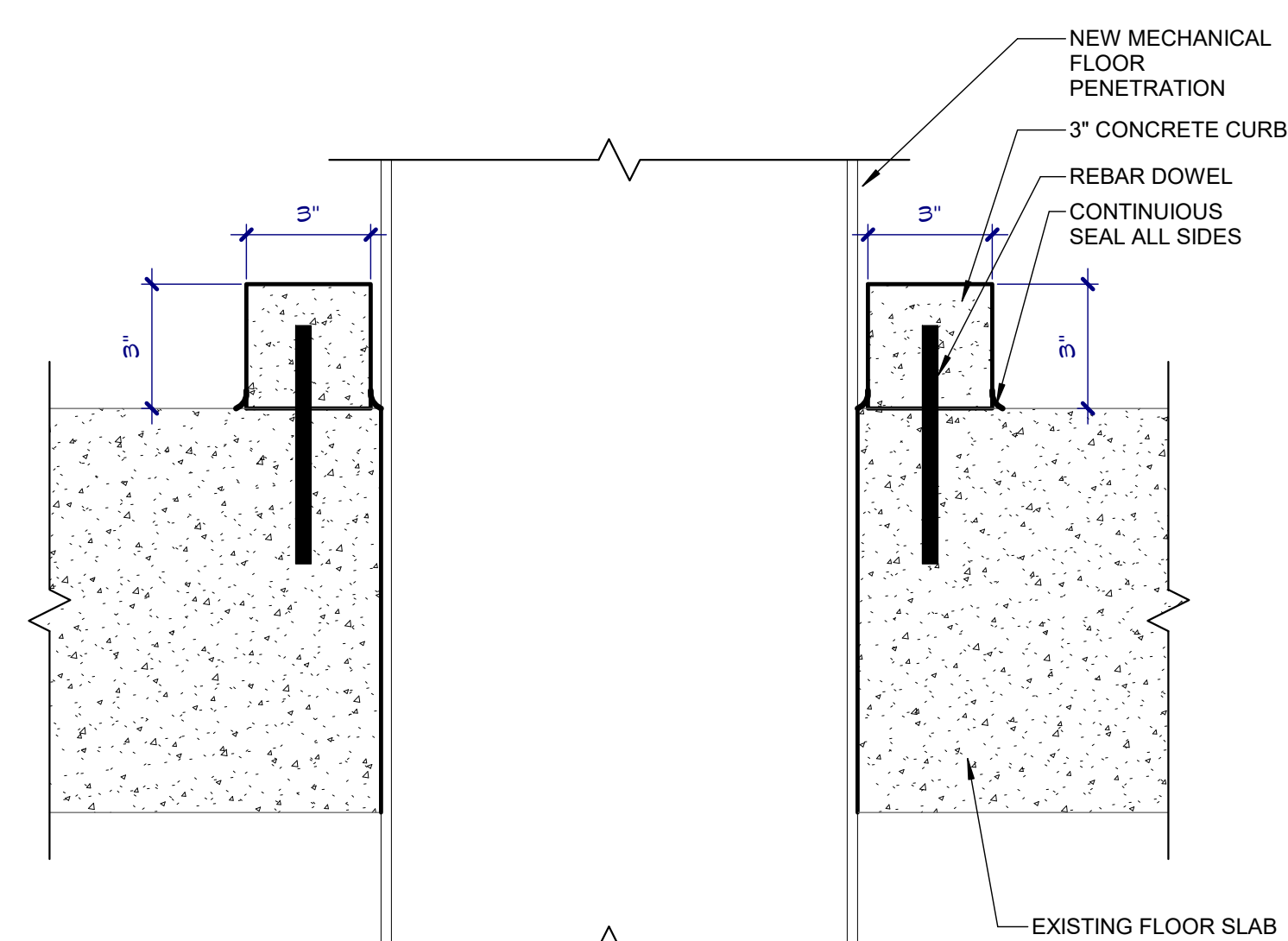
* LIFT SUPPLIER TO COORDINATE AND REVIEW EXISTING PROJECT CONDITIONS FOR INSTALLATION OF NEW COMPONENTS TO TIE INTO EXISTING SALVAGED COMPONENTS. LIFT SUPPLIER TO INSTALL ENTIRE SYSTEM.

* LIFT SYSTEM CONTRACTOR SHALL BE RESPONSIBLE FOR THE INSTALLATION OR THEIR LIFT SYSTEM AND SUPPORTS

PATIENT LIFT SUPPORT

SCALE: 1 1/2" = 1'-0"

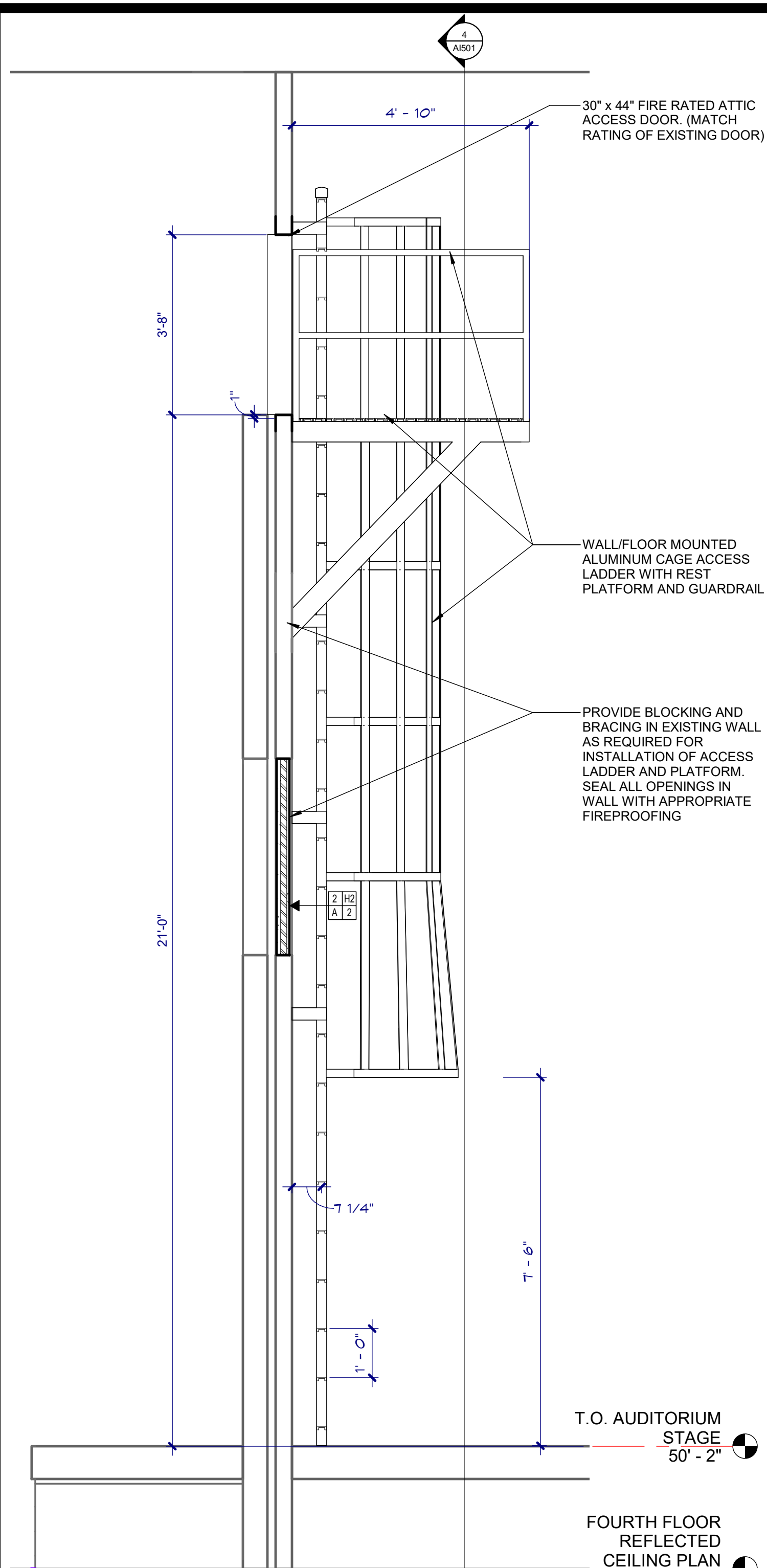
7



CONCRETE MECHANICAL CURB

SCALE: 3" = 1'-0"

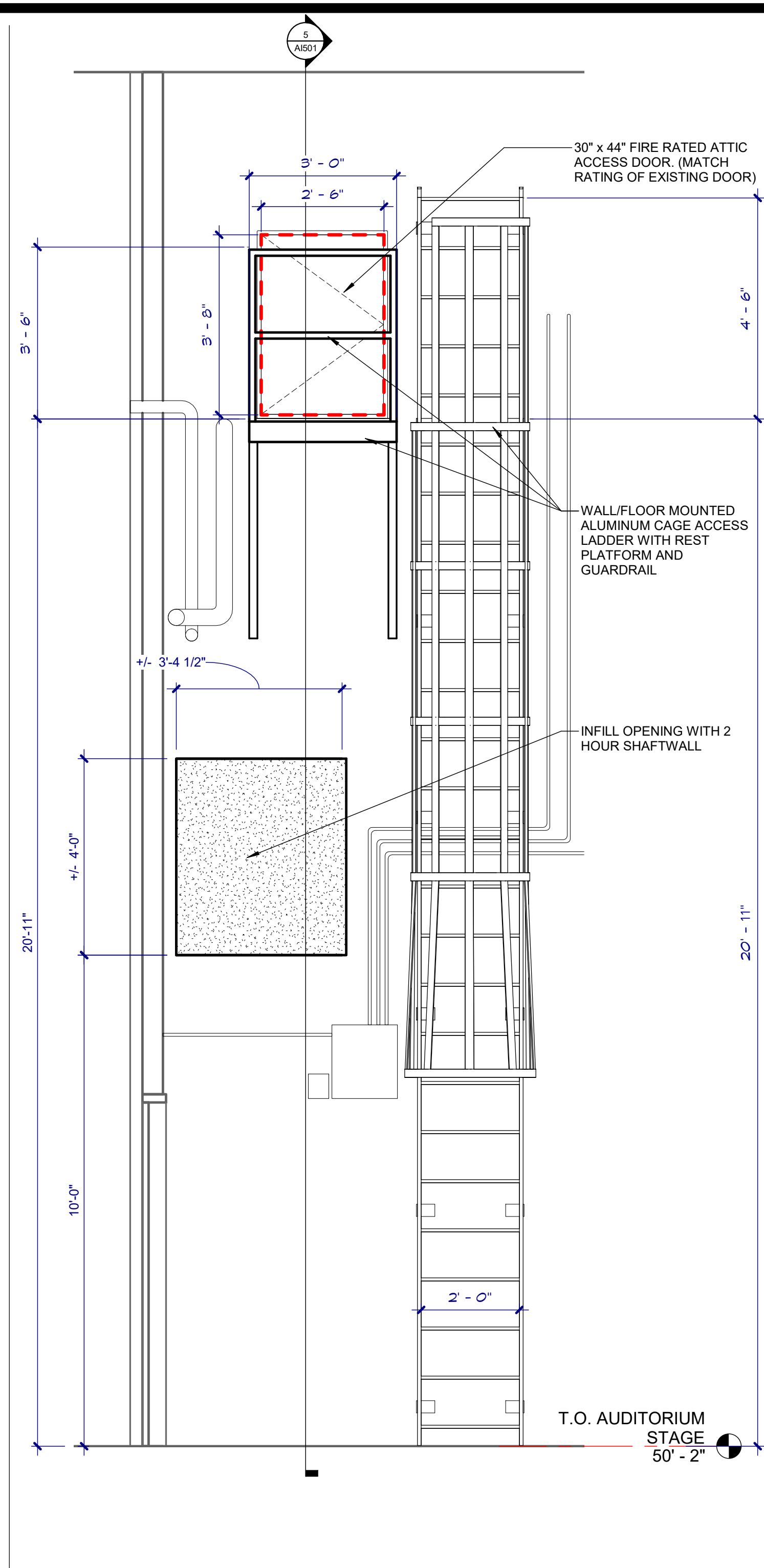
8



WALL LADDER DETAIL

SCALE: 1/2" = 1'-0"

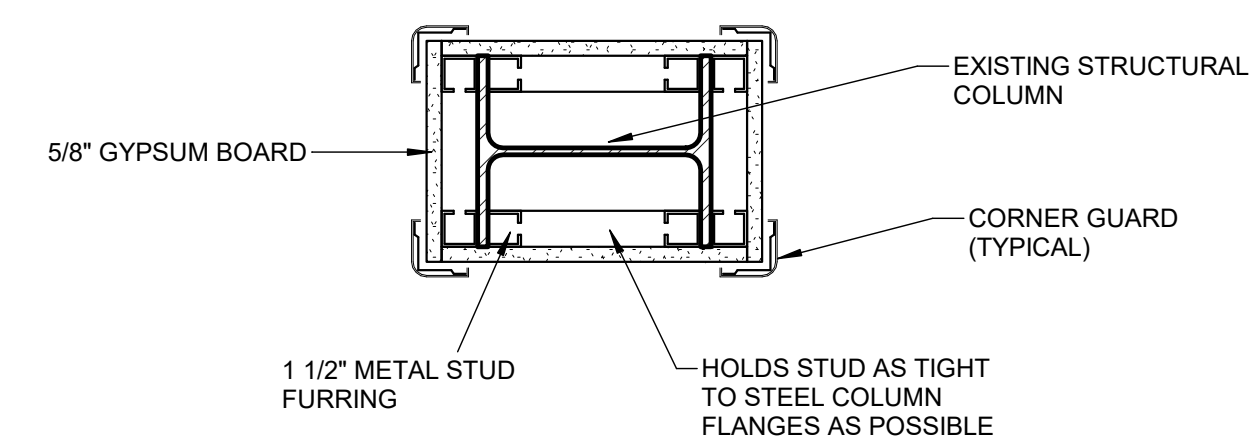
5



WALL LADDER DETAIL

SCALE: 1/2" = 1'-0"

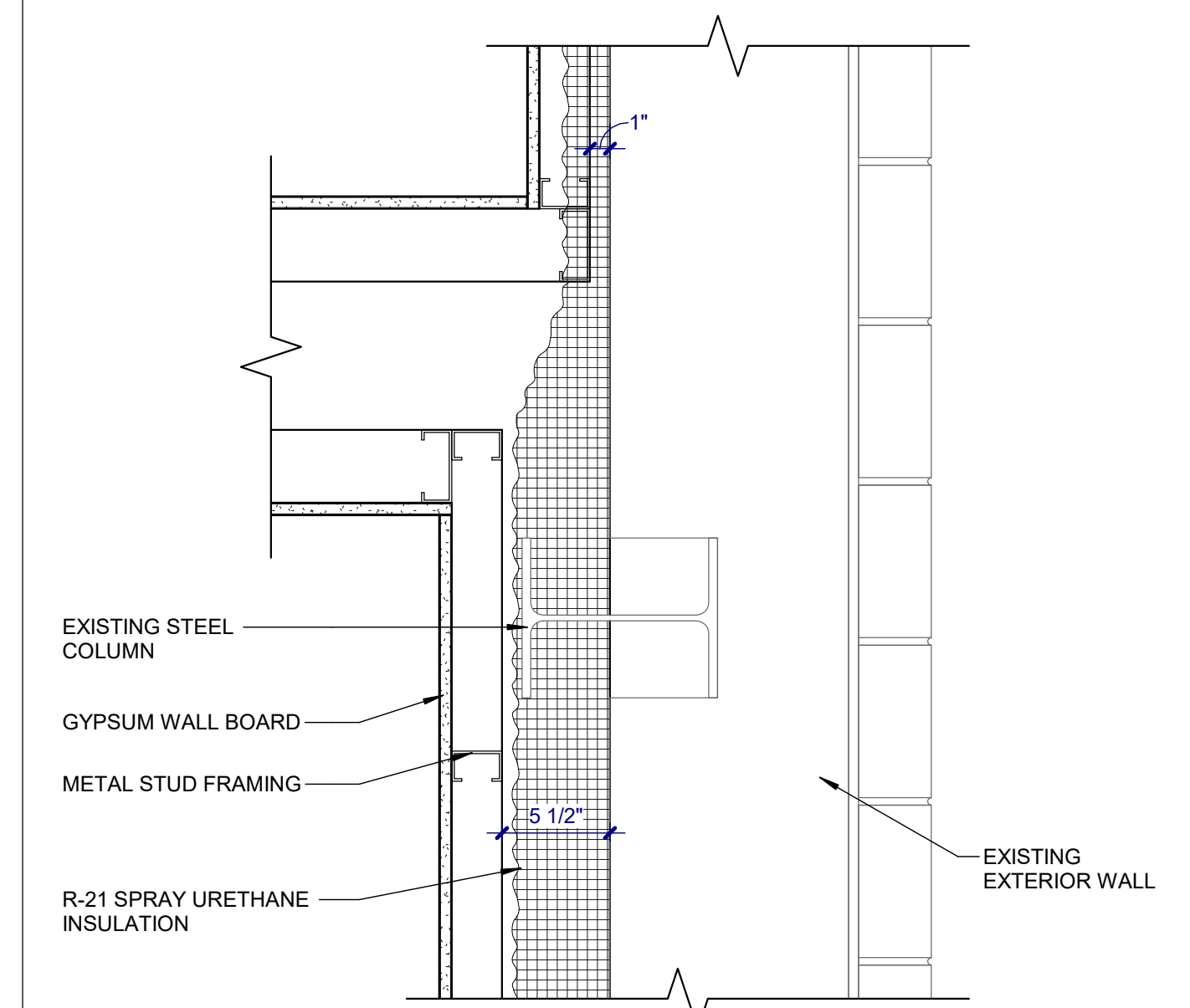
4



TYP. EXISTING COLUMN DETAIL

SCALE: 1 1/2" = 1'-0"

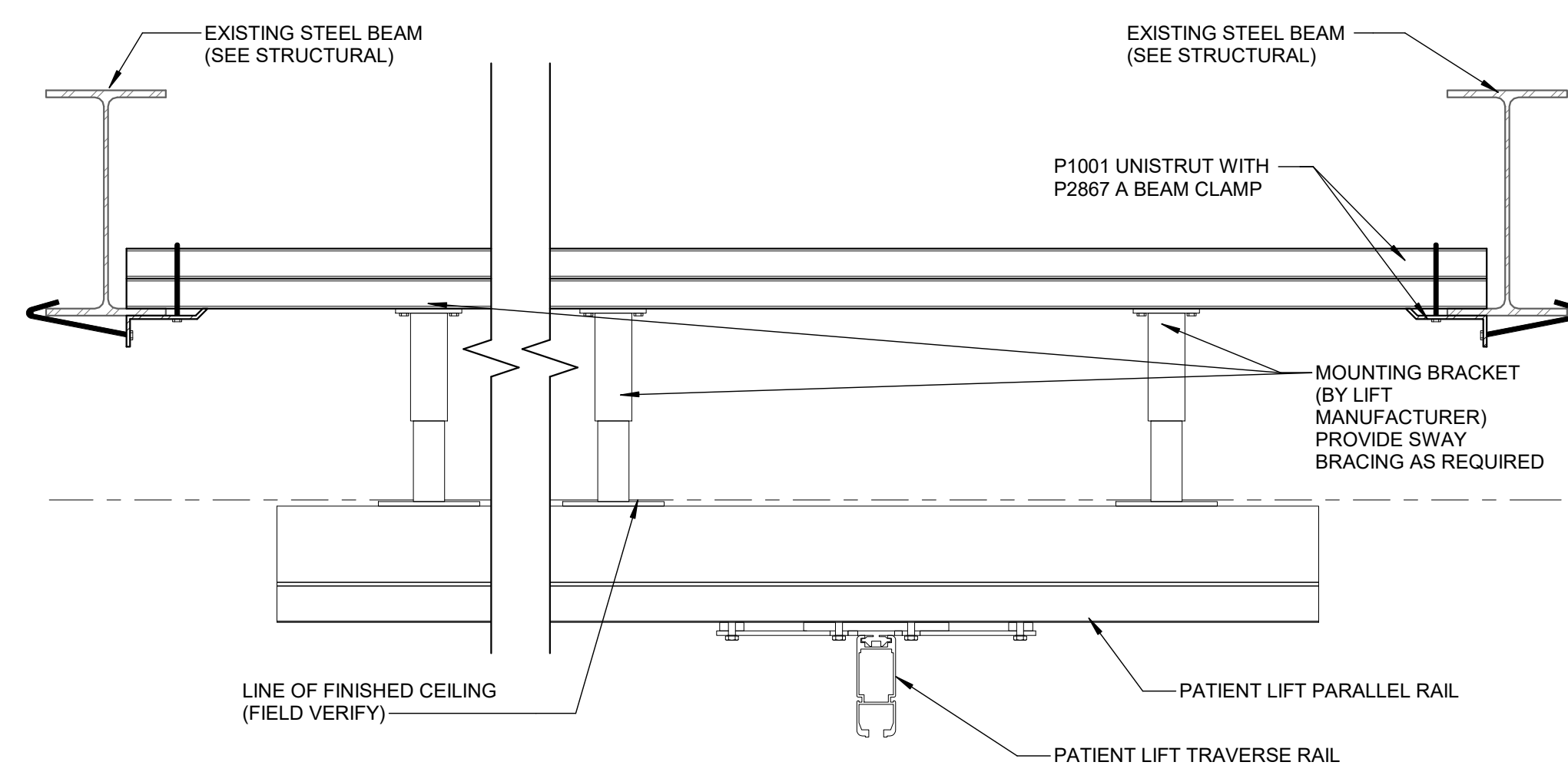
1



TYPICAL EXTERIOR COLUMN DETAIL

SCALE: 1 1/2" = 1'-0"

2

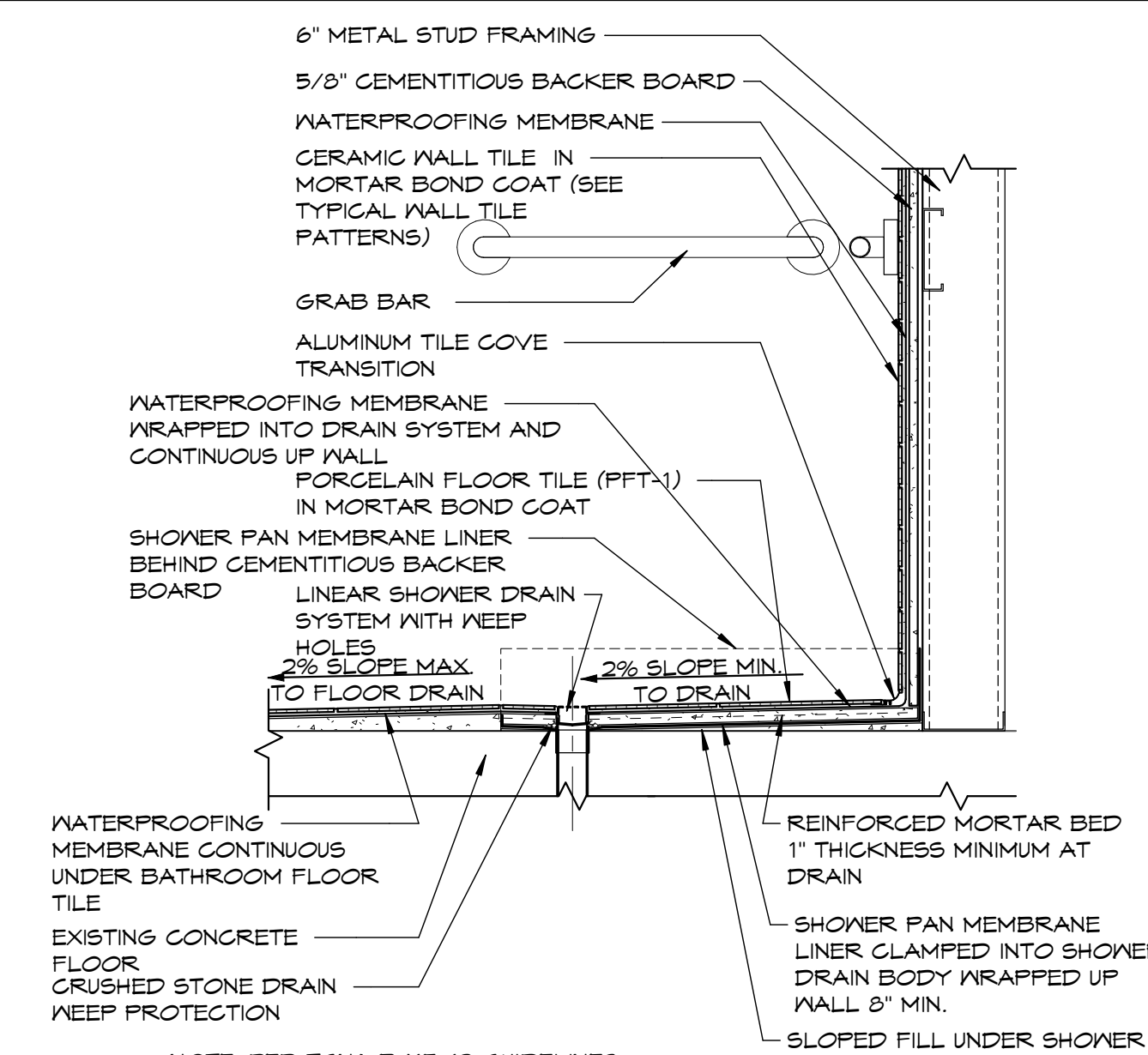


* LIFT SYSTEM CONTRACTOR SHALL BE RESPONSIBLE FOR THE INSTALLATION OR THEIR LIFT SYSTEM AND SUPPORTS

PATIENT LIFT SUPPORT

SCALE: 1 1/2" = 1'-0"

6



SHOWER DRAIN DETAIL

SCALE: 1" = 1'-0"

3

100% CONSTRUCTION DRAWINGS

CONSULTANTS:

WPE WEST PLAINS ENGINEERING
 4609 SOUTH TECHLINK CIRCLE • SIOUX FALLS, SD 57106
 PHONE: (605) 362-3753 • FAX: (605) 362-3759
 RAPID CITY, SD • SIOUX FALLS, SD • CASPER, WY • CEDAR RAPIDS, IA • BISMARK, ND

RISE STRUCTURAL ASSOCIATES INC.
 101 Railroad Ave. - PO Box 39
 Harrisburg, SD 57022
 (605) 743-2510
 fax: (605) 743-2513

SEAL:

REGISTERED ARCHITECT
 REG. NO. 3907
 ROBIN J. MILLER
 SIOUX FALLS, SOUTH DAKOTA

ARCHITECT:

MSH ARCHITECTS
 625 S. MINNESOTA AVENUE, SUITE 204
 SIOUX FALLS, SOUTH DAKOTA 57104-4873
 TELE: (605) 332-7850 FAX: (605) 332-3539

Drawing Title
MISCELLANEOUS DETAILS

Approved: Project Director

Project Title
**V.A. HEALTH CARE SYSTEM
 RENOVATE 5TH FLOOR SURGERY**

Project Number
438-15-201
 Building Number
5

Location
SIOUX FALLS, SOUTH DAKOTA
 Date
OCTOBER 11, 2017
 Checked
DGS
 Drawn
AAD
 Drawing Number
5-AI501
 Dwg. 16 of 60

Office of
 Construction
 and Facilities
 Management

Department of
 Veterans Affairs