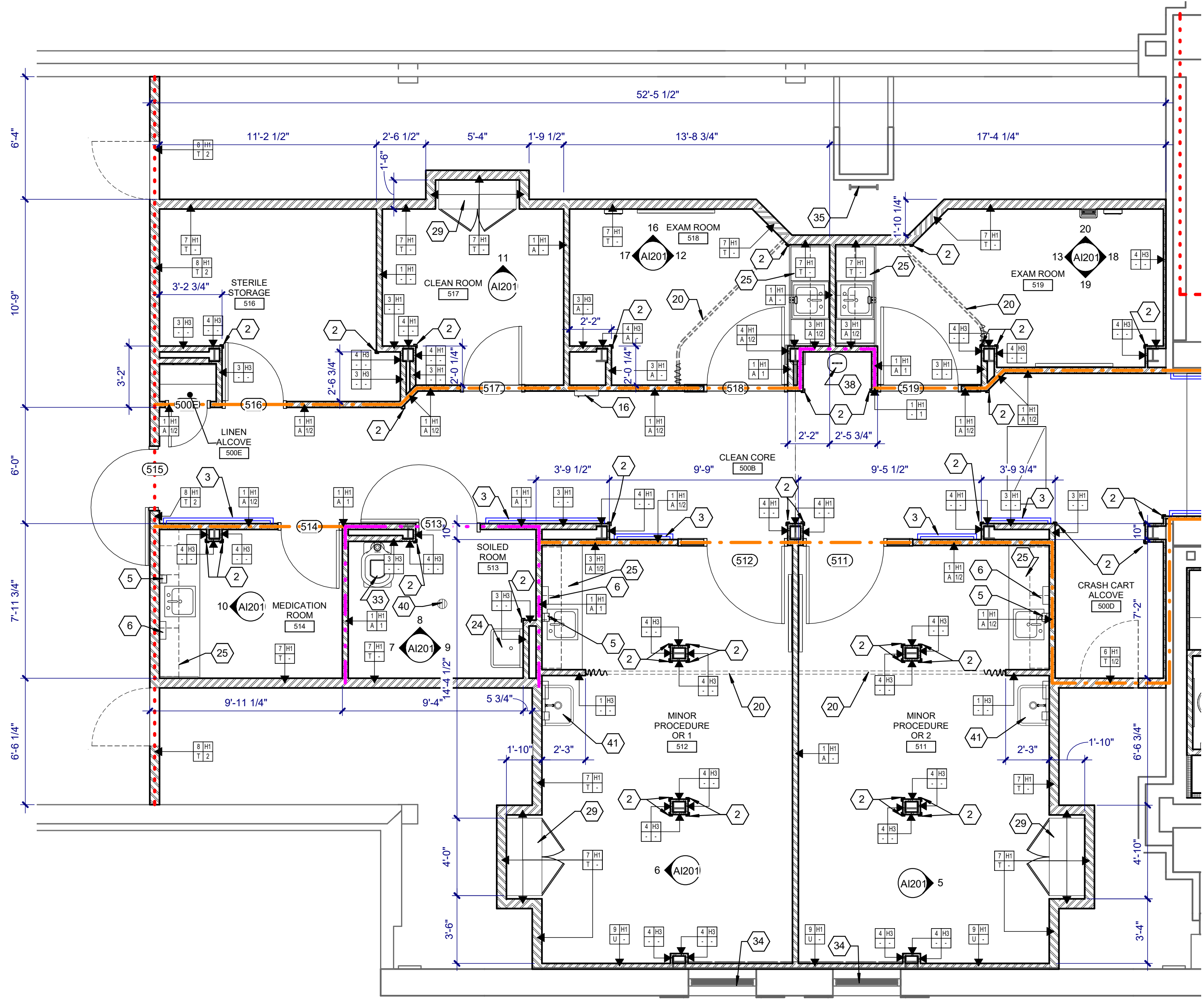


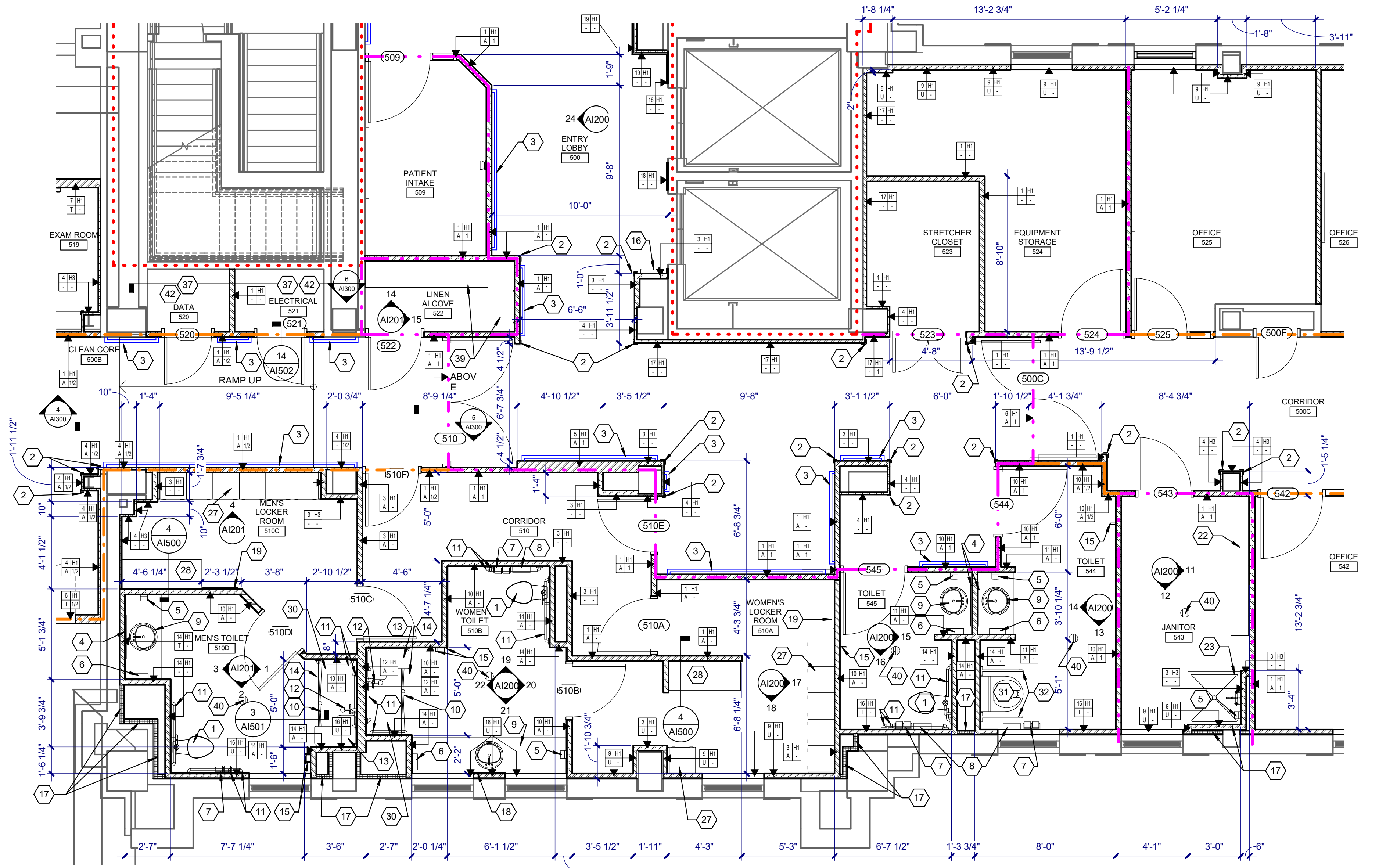
ENLARGED RECEPTION AND TOILET PLAN
SCALE: 1/4" = 1'-0"

KEYNOTES:

- 1 FLOOR MOUNTED FLUSH VALVE WATER CLOSET. SEE PLUMBING
- 2 CORNER GUARD
- 3 HANDRAIL
- 4 30" X 42" MIRROR
- 5 SOAP DISPENSER, FURNISHED BY OWNER, INSTALLED BY GENERAL CONTRACTOR
- 6 PAPER TOWEL DISPENSER, FURNISHED BY OWNER, INSTALLED BY GENERAL CONTRACTOR
- 7 TOILET PAPER DISPENSER, FURNISHED BY OWNER, INSTALLED BY GENERAL CONTRACTOR
- 8 HYGIENE PRODUCT DISPOSAL, FURNISHED BY OWNER, INSTALLED BY GENERAL CONTRACTOR
- 9 SOLID SURFACE VANITY WITH INTEGRAL LAVATORY SINK. SEE PLUMBING
- 10 SHOWER TILE FLOORING AND MEMBRANE. GRIND FLOOR TO PROVIDE PROPER SLOPE TO DRAIN
- 11 1 1/2" DIAMETER GRAB BAR. SEE STRUCTURAL FOR MOUNTING DETAIL. PROVIDE BACKING AS REQUIRED
- 12 ADA HANDHELD ADJUSTABLE SHOWER HEAD. SEE PLUMBING
- 13 ADA WALL-MOUNTED FOLDING SHOWER SEAT. PROVIDE BACKING AS REQUIRED
- 14 SHOWER ROD, CURTAIN AND HOOKS
- 15 COAT/TOWEL HOOK
- 16 SEMI RECESSED FIRE EXTINGUISHER CABINET AND EXTINGUISHER
- 17 CONTINUE R21 URETHANE INSULATION INSIDE CHASE ON EXTERIOR WALL AND AROUND STRUCTURAL COLUMNS.
- 18 20" X 42" MIRROR
- 19 24" X 72" MIRROR
- 20 PRIVACY CURTAIN AND TRACK
- 21 EXISTING LINEN CHUTE TO REMAIN
- 22 12" DEEP ADJUSTABLE PLASTIC LAMINATE SHELVING ON STANDARD WALL BRACKETS
- 23 MOP SINK. SEE PLUMBING
- 24 SERVICE SINK. SEE PLUMBING
- 25 CABINETS AND COUNTERTOP
- 26 COUNTERTOP
- 27 18" WIDE X 18" DEEP X 72" HIGH DOUBLE TIER PREFINISHED METAL LOCKER WITH INTEGRAL BASE AND SLOPED TOP
- 28 BENCH
- 29 CABINET
- 30 WATERPROOF MEMBRANE UNDER TILE AT SHOWER FLOORS AND WALLS
- 31 FLOOR MOUNTED, 600 LB CAPACITY, FLUSH VALVE, ADA COMPLIANT, ANTIMICROBIAL ENAMEL COATED STAINLESS STEEL BARIATRIC WATER CLOSET
- 32 600 LB CAPACITY, HEAVY DUTY STAINLESS STEEL, SWING UP STYLE GRAB BAR
- 33 FLOOR MOUNTED CLINICAL FLUSHING RIM SINK (SEE PLUMBING)
- 34 INSTALL WHITE OUT FILM TO GLASS (INTERIOR SIDE). FILL CAVITY WITH BATT INSULATION.
- 35 EXISTING ROOF ACCESS LADDER
- 36 REPLACE EXISTING LINEN CHUTE DOOR AND FRAME (FIELD VERIFY SIZE)
- 37 RAISED WOOD FLOORING
- 38 EMERGENCY EYEWASH SINK (SEE PLUMBING DRAWINGS)
- 39 18" DEEP ADJUSTABLE PLASTIC LAMINATE SHELVING ON STANDARD WALL BRACKETS
- 40 FLOOR DRAIN (SEE PLUMBING DRAWINGS)
- 41 STAINLESS STEEL WALL MOUNTED SCRUB/HANDWASH SINK WITH FOOT CONTROL VALVE (SEE PLUMBING DRAWINGS)
- 42 GYPSUM WALL BOARD SHALL EXTEND FROM FLOOR TO BOTTOM OF 6TH FLOOR SLAB IN THESE ROOMS. PROVIDE ADDITIONAL 5/8" GYPSUM BOARD AT TOP OF EXISTING WALLS WHERE NEEDED TO MEET THIS REQUIREMENT.



ENLARGED MINOR PROCEDURE OR PLAN
SCALE: 1/4" = 1'-0"



ENLARGED TOILET AND LOCKER ROOM PLANS
SCALE: 1/4" = 1'-0"

100% CONSTRUCTION DRAWINGS

Project Title V.A. HEALTH CARE SYSTEM RENOVATE 5TH FLOOR SURGERY		Project Number 438-15-201		Office of Construction and Facilities Management
Location SIOUX FALLS, SOUTH DAKOTA		Building Number 5		
Date OCTOBER 11, 2017		Drawing Number 5-A1104		Department of Veterans Affairs
Checked DGS		Drawn AAD		

Dwg. 11 of 60

CONSULTANTS:	SEAL:
 4609 SOUTH TECHLINK CIRCLE • SIOUX FALLS, SD 57106 PHONE: (605) 362-3753 • FAX: (605) 362-3759 RAPID CITY, SD • SIOUX FALLS, SD • CASPER, WY • CEDAR RAPIDS, IA • BISMARCK, ND	
 101 Railroad Ave. - PO Box 39 Harrisburg, SD 57032 (605) 743-2510 fax (605) 743-2513	ARCHITECT: 625 S. MINNESOTA AVENUE, SUITE 204 SIOUX FALLS, SOUTH DAKOTA 57104-4873 TELE: (605) 332-7850 FAX: (605) 332-3539

Drawing Title ENLARGED FLOOR PLANS	
Approved: Project Director	