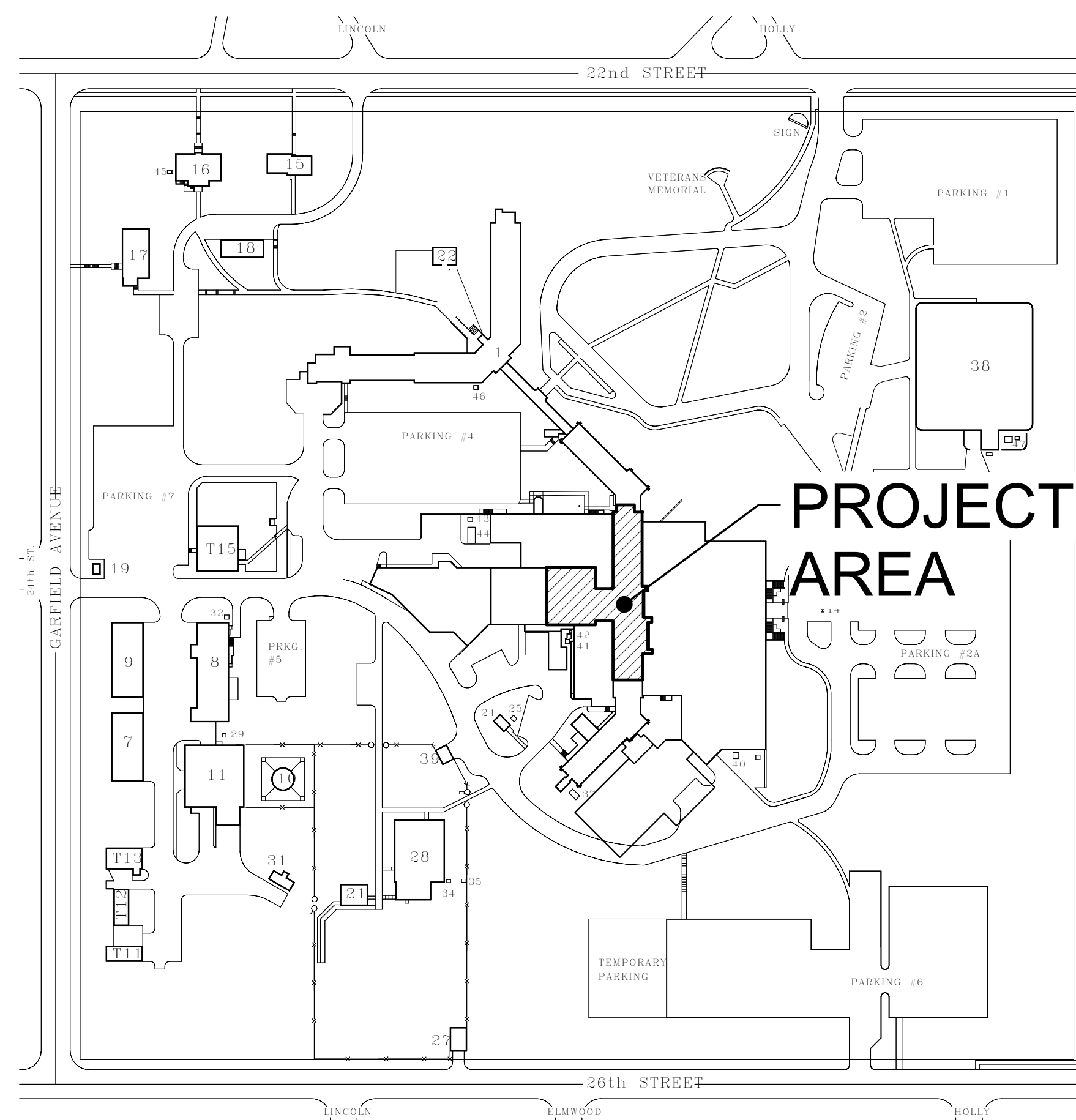


V.A. HEALTH CARE SYSTEM SIOUX FALLS, SOUTH DAKOTA 438-15-201 RENOVATE 5TH FLOOR SURGERY



PROJECT LOCATION



BUILDING SCHEDULE

No	Buildings
1	N.H.C.U.
5	HOSPITAL BUILDING
7	UTILITY SHOPS
8	LAUNDRY
9	STATION GARAGE
10	WATER TANK
11	BOILER PLANT
14	FLAGPOLE
15	HOTEL BUILDING
16	MENTAL HEALTH & BLDG. MGMT.
17	ENGINEERING and A & MM
18	GARAGE
19	GAS METER HOUSE
21	RECREATION SHELTER - HOSPITAL
22	RECREATION SHELTER - N.H.C.U.
24	AUXILIARY POWER UNIT
25	PAD MOUNT TRANSFORMER
27	ELECTRICAL SWITCHGEAR
28	RESEARCH BUILDING
29	PAD MOUNT TRANSFORMER
31	SALT STORAGE BASIN
32	PAD MOUNT TRANSFORMER
34	PAD MOUNT TRANSFORMER
35	PAD MOUNT TRANSFORMER
37	A/C PAD - L.C.U.
38	REGIONAL OFFICE BUILDING
39	OXYGEN STORAGE PAD
40,41	PAD MOUNT TRANSFORMER
42,43	PAD MOUNT TRANSFORMER
45,46	PAD MOUNT TRANSFORMER
47	PAD MOUNT TRANSFORMER
44	COOLING TOWER PAD
T11	STORAGE BUILDING
T12	STORAGE BUILDING
T13	STORAGE BUILDING
T15	CHILD DAYCARE

V.A.M.R.O.C. SITE PLAN
SIOUX FALLS, SOUTH DAKOTA
Scale: 1" = 50' feet

SEPT. 2001

DRAWING SHEET INDEX

SHEET NUMBER	SHEET NAME	PAGE NUMBER	OF
GENERAL			
5-GI000	COVER SHEET	1	60
5-GI001	PHASING PLANS	2	60
STRUCTURAL			
5-S1	EXISTING ROOF FRAMING PLAN AT FIFTH FLOOR	3	60
ARCHITECTURAL			
5-AD100	FOURTH FLOOR DEMOLITION PLANS	4	60
5-AD101	FIFTH FLOOR DEMOLITION PLANS	5	60
5-AD102	FIFTH FLOOR REFLECTED CEILING DEMOLITION PLAN	6	60
5-AI100	FIFTH FLOOR CODE PLAN	7	60
5-AI101	FOURTH FLOOR PLANS	8	60
5-AI102	FIFTH FLOOR REMODEL PLAN	9	60
5-AI103	FIFTH FLOOR REFLECTED CEILING PLAN	10	60
5-AI104	ENLARGED FLOOR PLANS	11	60
5-AI200	INTERIOR ELEVATIONS	12	60
5-AI201	INTERIOR ELEVATIONS	13	60
5-AI300	BUILDING SECTIONS	14	60
5-AI500	CASEWORK DETAILS	15	60
5-AI501	MISCELLANEOUS DETAILS	16	60
5-AI502	DOOR SCHEDULE, DOOR AND WINDOW FRAMES AND DETAILS	17	60
5-AI503	WINDOW FRAME ELEVATIONS AND DETAILS	18	60
5-AF100	FIFTH FLOOR FINISH PLAN	19	60
5-AF600	FINISH SCHEDULE	20	60
5-IF101	EQUIPMENT PLAN	21	60
FIRE PROTECTION			
5-FD101	DEMOLITION FIRE PROTECTION PLAN - FIFTH FLOOR	22	60
5-FA101	FIRE PROTECTION LEGEND AND DETAILS	23	60
5-FA102	FIRE PROTECTION PLAN - FIFTH FLOOR	24	60
PLUMBING			
5-PD101	DEMOLITION PLUMBING PLAN - FOURTH FLOOR	25	60
5-PD102	DEMOLITION PLUMBING PLAN - FIFTH FLOOR	26	60
5-PD103	DEMOLITION PLUMBING PLAN - PENTHOUSE	27	60
5-PD104	DEMOLITION MEDICAL GAS PLAN - FIFTH FLOOR	28	60
5-PD105	DEMOLITION MEDICAL GAS PLAN - PENTHOUSE	29	60
5-PL001	MECHANICAL PLUMBING SYMBOLS AND ABBREVIATIONS	30	60
5-PL101	PLUMBING PLAN - FOURTH FLOOR	31	60
5-PL102	PLUMBING PLAN - FIFTH FLOOR	32	60
5-PL103	MEDICAL GAS PLAN - FIFTH FLOOR	33	60
5-PL501	PLUMBING DETAILS	34	60
5-PL601	PLUMBING SCHEDULES	35	60

SHEET NUMBER	SHEET NAME	PAGE NUMBER	OF
MECHANICAL			
5-MD101	DEMOLITION HVAC VENTILATION PLAN - FOURTH FLOOR	36	60
5-MD102	DEMOLITION HVAC VENTILATION PLAN - FIFTH FLOOR	37	60
5-MD103	DEMOLITION HVAC VENTILATION PLAN - PENTHOUSE	38	60
5-MD104	DEMOLITION HVAC PIPING PLAN - FIFTH FLOOR	39	60
5-MD105	DEMOLITION HVAC PIPING PLAN - PENTHOUSE	40	60
5-MH001	MECHANICAL SYMBOLS SHEET	41	60
5-MH002	MECHANICAL ABBREVIATIONS AND GENERAL NOTES	42	60
5-MH101	HVAC VENTILATION PLAN - FOURTH FLOOR	43	60
5-MH102	HVAC VENTILATION PLAN - FIFTH FLOOR	44	60
5-MH103	HVAC VENTILATION PLAN - PENTHOUSE	45	60
5-MH501	MECHANICAL DETAILS	46	60
5-MH502	MECHANICAL DETAILS	47	60
5-MH503	HVAC SCHEDULES	48	60
5-MP101	HVAC PIPING PLAN - FOURTH FLOOR	49	60
5-MP102	HVAC PIPING PLAN - FIFTH FLOOR	50	60
5-MP103	HVAC PIPING PLAN - PENTHOUSE	51	60
5-MP501	HVAC PIPING DETAILS	52	60
ELECTRICAL			
5-ED100	DEMOLITION CEILING PLAN - FOURTH FLOOR	53	60
5-ED101	DEMOLITION ELECTRICAL PLAN - FIFTH FLOOR	54	60
5-EL101	LIGHTING PLAN - FIFTH FLOOR	55	60
5-ELE500	LIGHTING DETAILS AND SCHEDULES	56	60
5-EP101	POWER PLAN - FIFTH FLOOR	57	60
5-EP102	COMMUNICATIONS PLAN - FIFTH FLOOR	58	60
5-EP500	POWER AND COMMUNICATIONS DETAILS	59	60
5-EP601	POWER AND COMMUNICATIONS SCHEDULES	60	60



COORDINATING
DRAWING
30-12A-44 p 45

**100% CONSTRUCTION
DRAWINGS**

Revisions: _____ Date	CONSULTANTS: 4609 SOUTH TECHLINK CIRCLE • SIOUX FALLS, SD 57106 PHONE: (605) 362-3753 • FAX: (605) 362-3759 RAPID CITY, SD • SIOUX FALLS, SD • CASPER, WY • CEDAR RAPIDS, IA • BISMARCK, ND	ARCHITECT: 101 Railroad Ave. - PO Box 39 Harrisburg, SD 57032 (605) 743-2510 fax: (605) 743-2513	ARCHITECT: 625 S. MINNESOTA AVENUE, SUITE 204 SIOUX FALLS, SOUTH DAKOTA 57104-4873 TELE: (605) 332-7850 FAX: (605) 332-3539	Drawing Title COVER SHEET	Project Title V.A. HEALTH CARE SYSTEM RENOVATE 5TH FLOOR SURGERY	Project Number 438-15-201	Office of Construction and Facilities Management	
	Approved: Project Director	Location SIOUX FALLS, SOUTH DAKOTA	Building Number 5	Drawing Number 5-GI000	Date October 11, 2017	Checked DGS	Drawn AAD	Dwg. 1 of 60
					Department of Veterans Affairs			

PHASING NOTES:

The Medical Center must maintain its operation 24 hours a day 7 days a week. Therefore, any interruption in service must be scheduled and coordinated with the COR to ensure that no lapses in operation occur. It is the CONTRACTOR'S responsibility to develop a work plan and schedule detailing, at a minimum, the procedures to be employed, the equipment and materials to be used, the interim life safety measure to be used during the work, and a schedule defining the duration of the work with milestone subtasks. The work to be outlined shall include, but not be limited to:

RENOVATE 5TH FLOOR SURGERY - PHASING SCHEDULE
Standard work hours for the medical center are Monday-Friday, 7:00 a.m. to 4:30 p.m. After hours work may be required by the contractor pending noise, vibration or other construction impacts that would limit care to patients.

- Phase I:**
- This Project is divided into THREE SEPARATE PHASES. Phase 1 work shall be completed prior to commencing Phase 2 work. Phase 2 work shall be completed prior to commencing Phase 3 work. The contractor shall provide adequate work forces to complete all work in each Phase within the contracted time frame.
 - Coordinate with Contracting Officers Representative (COR) to assure that all items to be removed or relocated from the spaces by the VA have been so removed.
 - Construct required construction barriers. Construct 1 hour fire barrier and temporary fire door as indicated prior to beginning demolition and asbestos abatement.
 - Perform Phase 1 asbestos and demolition activities. After hours work may be required by the contractor pending noise, vibration or other construction impacts that limits care to patients.
 - After demolition and asbestos abatement activities are completed for Phase 1, convene a meeting with Contracting Officers Representative (COR) and Architect/Engineer to review conflicts.
 - Install new walls, doors, ceilings, casework, and equipment in an order most workable to the General Contractor for Phase 1 Area.
 - Coordinate installation of plumbing, electrical and mechanical equipment for Phase 1 Area.
 - Complete wall and floor finishes within individual work areas for Phase 1 Area.
 - Remove temporary construction barriers and doors at completion of Phase 1 work.
 - For each Phase and Area, complete final cleanup for final inspection by Contracting Officers Representative (COR) and Architect/Engineer.
 - After Phase 1 activities are completed convene a meeting with Contracting Officers Representative (COR) and Architect/Engineer to review conflicts.

- Phase II:**
- Provide 14 calendar day window between final completion of Phase 1 and the beginning of Phase 2 for the VA to move out of the Phase 2 Area.
 - Coordinate with Contracting Officers Representative (COR) to assure that all items to be removed or relocated from the spaces by the VA have been so removed.
 - Construct required construction barriers. Construct 1 hour fire barrier and temporary fire door as indicated on Sheet G1001 Phasing Plans prior to beginning demolition and asbestos abatement.
 - Perform Phase 2 asbestos abatement and demolition activities. After hours work may be required by the contractor pending noise, vibration or other construction impacts that limits care to patients.
 - After demolition and asbestos abatement activities are completed for Phase 2, convene a meeting with Contracting Officers Representative (COR) and Architect/Engineer to review conflicts.
 - Install new walls, doors, ceilings, casework, and equipment in an order most workable to the General Contractor for Phase 2 Area.
 - Coordinate installation of plumbing, electrical and mechanical equipment for Phase 2 Area.
 - Complete wall and floor finishes within individual work areas for Phase 2 Area.
 - Remove temporary construction barriers and doors at completion of Phase 2 work.
 - For each Phase and Area, complete final cleanup for final inspection by Contracting Officers Representative (COR) and Architect/Engineer.
 - After Phase 2 activities are completed, convene a meeting with Contracting Officers Representatives (COR) and Architect/Engineer to review conflicts.

- Phase III:**
- Demolition may proceed in Phase 3 in an order most suitable to the General Contractor, however Phase 1 and 2 shall be 100% complete prior to any work on Phase 3.
 - Work for Phase 3 will need to occur in conjunction with continued hospital operations. The contractor shall coordinate work during this phase closely with the VA and provide protection for VA employees and patients during this phase. After hours work may be required by the contractor pending noise, vibration or other construction impacts that limits care to patients.
 - After demolition activities are completed for Phase 3, convene a meeting with Contracting Officers Representative (COR) and Architect/Engineer to review conflicts.
 - Install new walls, doors, ceilings, casework, and equipment in an order most workable to the General Contractor, for Phase 3 Area.
 - Coordinate installation of plumbing, electrical and mechanical equipment for Phase 3 items.
 - Complete wall and floor finishes within individual work areas for Phase 3 items.
 - For each Phase and Area, complete final cleanup for final inspection by Contracting Officers Representative (COR) and Architect/Engineer.

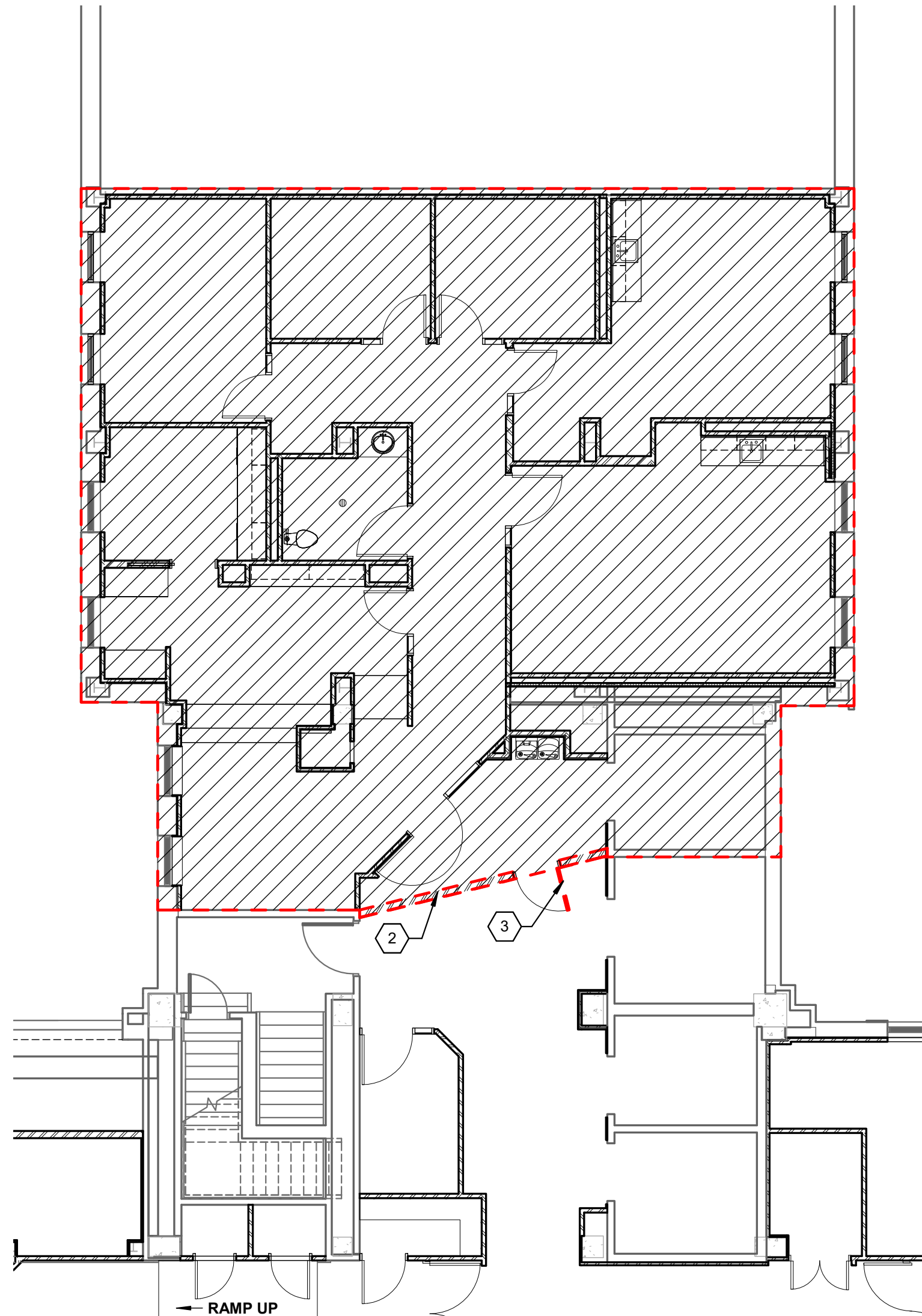
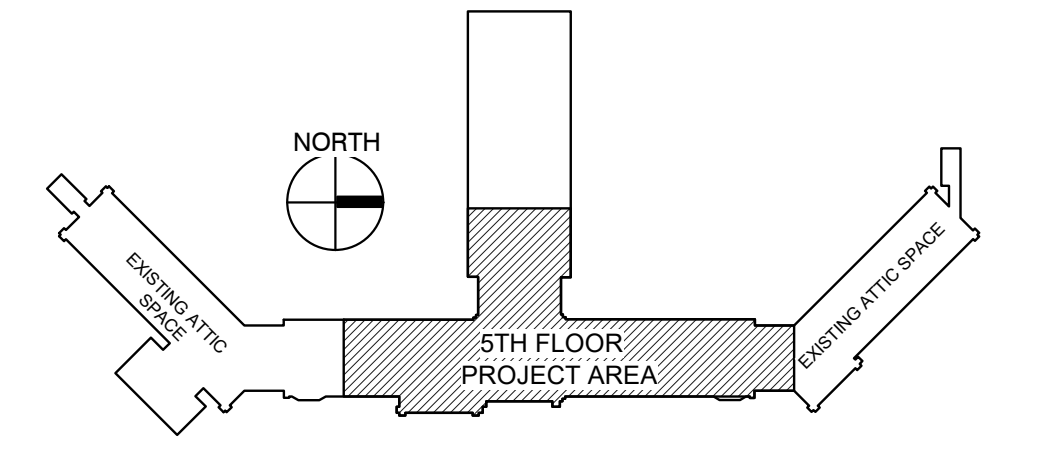
KEYNOTES:

- TEMPORARY 1 HOUR FIRE RATED CONSTRUCTION PARTITION. REMOVE PARTITION AT COMPLETION OF PHASE 1
- TEMPORARY 1 HOUR FIRE RATED CONSTRUCTION PARTITION. REMOVE PARTITION AT COMPLETION OF PHASE 2
- TEMPORARY 1 HOUR FIRE RATED DOOR

GENERAL NOTES:

- CONTRACTOR SHALL BE ABLE TO ACCESS THE PROJECT VIA ONLY ONE ELEVATOR. COORDINATE WITH THE VA REGARDING WHICH ELEVATOR WILL BE ALLOWED ACCESS TO THE 5TH FLOOR DURING CONSTRUCTION. THREE OF THE FOUR ELEVATORS WILL HAVE 5TH FLOOR ACCESS ELIMINATED DURING CONSTRUCTION.
- DAMAGE TO THE ELEVATOR USED FOR CONSTRUCTION SHALL BE REPAIRED BY THE CONTRACTOR PRIOR TO SUBSTANTIAL COMPLETION.
- PROVIDE TEMPORARY COOLING IN THE ELEVATOR LOBBY DURING BOTH PHASE 1 AND PHASE 2 CONSTRUCTION.

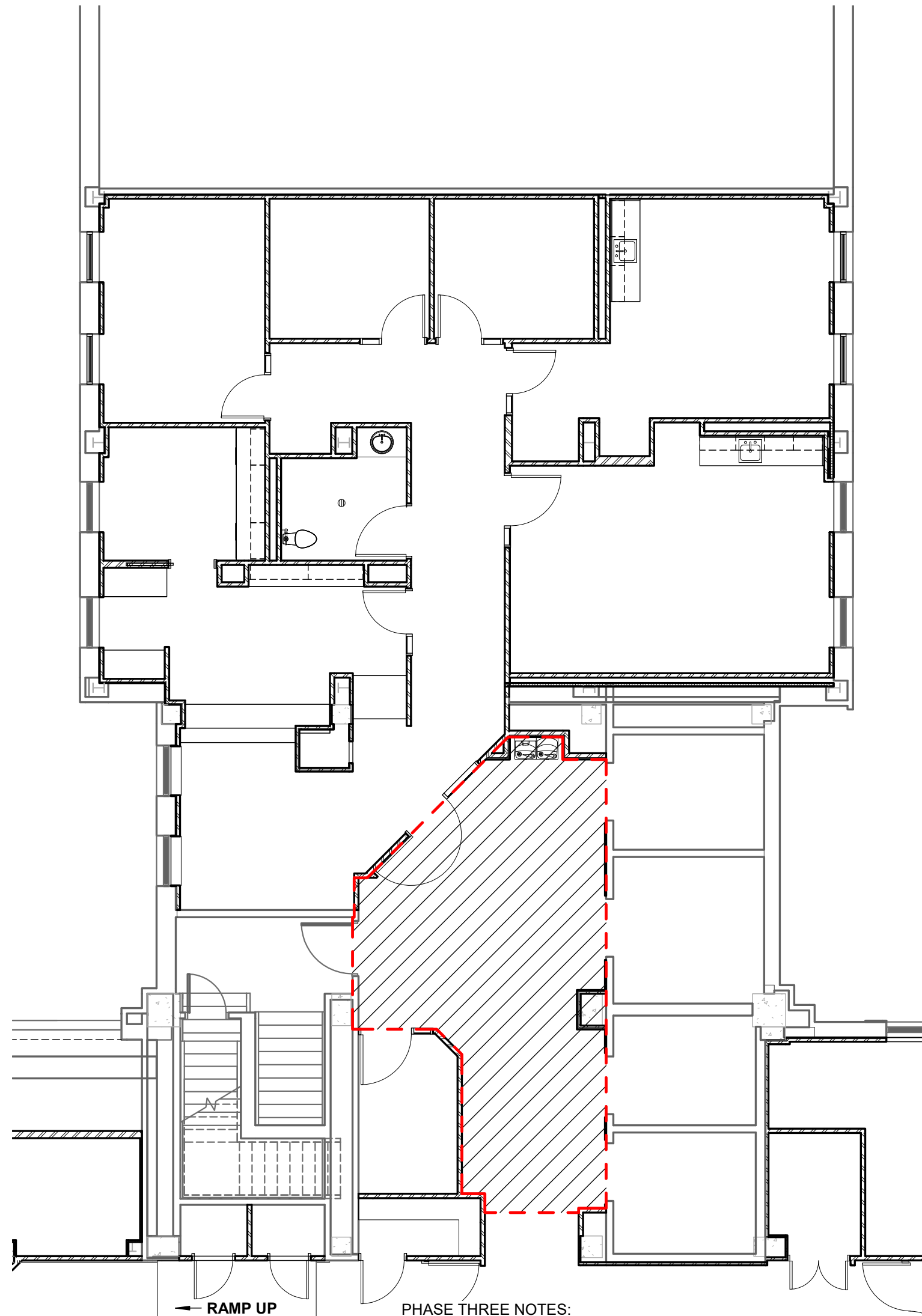
KEY PLAN:



PHASE 2 NOTES:

- BEGIN CONSTRUCTION ON THIS AREA 14 CALENDAR DAYS AFTER FINAL COMPLETION OF PHASE 1.
- MAINTAIN HVAC, POWER, PLUMBING, AND FIRE SPRINKLER SYSTEMS TO ALL OTHER PORTIONS OF THE HOSPITAL THROUGHOUT THE WORK OF THIS PHASE.
- PROVIDE TEMPORARY COOLING IN THE ELEVATOR LOBBY AREA DURING THE WORK OF THIS PHASE.
- MAINTAIN TEMPORARY PARTITION AND TEMPORARY DOOR THROUGHOUT THIS PHASE OF CONSTRUCTION.

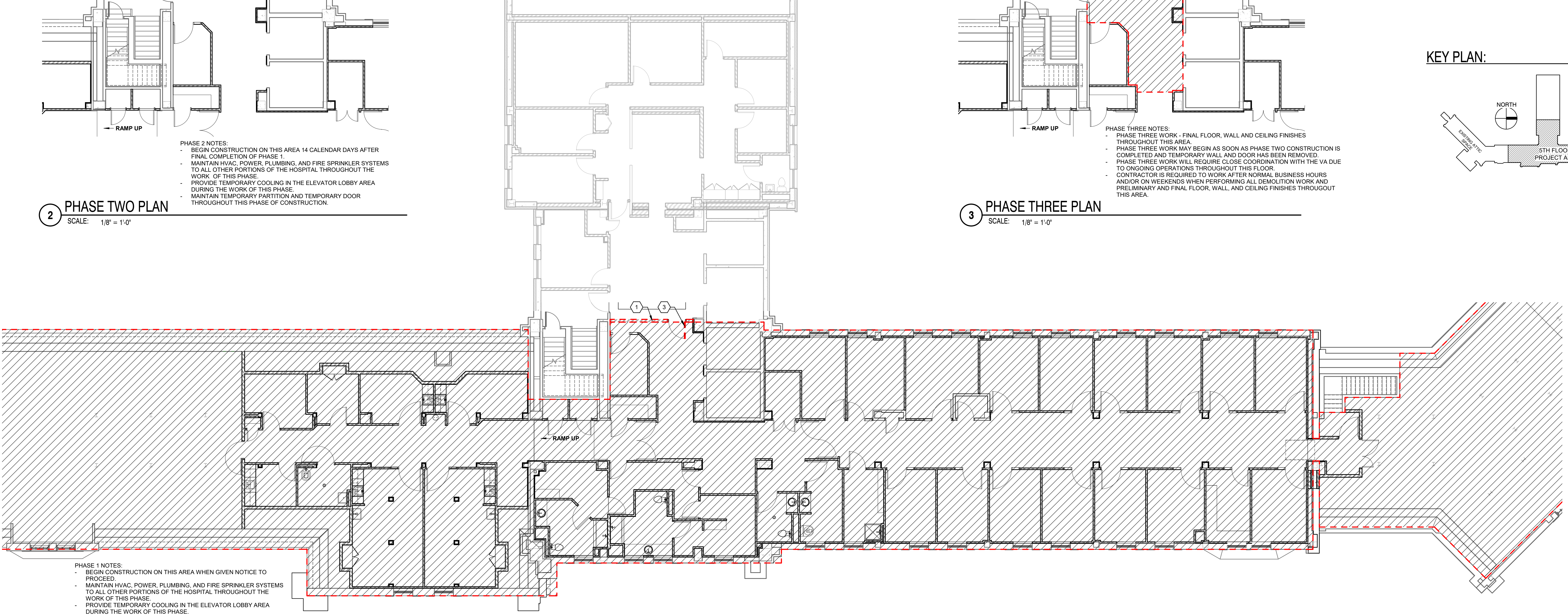
2 PHASE TWO PLAN
SCALE: 1/8" = 1'-0"



PHASE THREE NOTES:

- PHASE THREE WORK - FINAL FLOOR, WALL AND CEILING FINISHES THROUGHOUT THIS AREA.
- PHASE THREE WORK MAY BEGIN AS SOON AS PHASE TWO CONSTRUCTION IS COMPLETED AND TEMPORARY WALL AND DOOR HAS BEEN REMOVED.
- PHASE THREE WORK WILL REQUIRE CLOSE COORDINATION WITH THE VA DUE TO ONGOING OPERATIONS THROUGHOUT THIS FLOOR.
- CONTRACTOR IS REQUIRED TO WORK AFTER NORMAL BUSINESS HOURS AND/OR ON WEEKENDS WHEN PERFORMING ALL DEMOLITION WORK AND PRELIMINARY AND FINAL FLOOR, WALL, AND CEILING FINISHES THROUGHOUT THIS AREA.

3 PHASE THREE PLAN
SCALE: 1/8" = 1'-0"



PHASE 1 NOTES:

- BEGIN CONSTRUCTION ON THIS AREA WHEN GIVEN NOTICE TO PROCEED.
- MAINTAIN HVAC, POWER, PLUMBING, AND FIRE SPRINKLER SYSTEMS TO ALL OTHER PORTIONS OF THE HOSPITAL THROUGHOUT THE WORK OF THIS PHASE.
- PROVIDE TEMPORARY COOLING IN THE ELEVATOR LOBBY AREA DURING THE WORK OF THIS PHASE.
- MAINTAIN TEMPORARY PARTITION AND TEMPORARY DOOR THROUGHOUT THIS PHASE OF CONSTRUCTION.

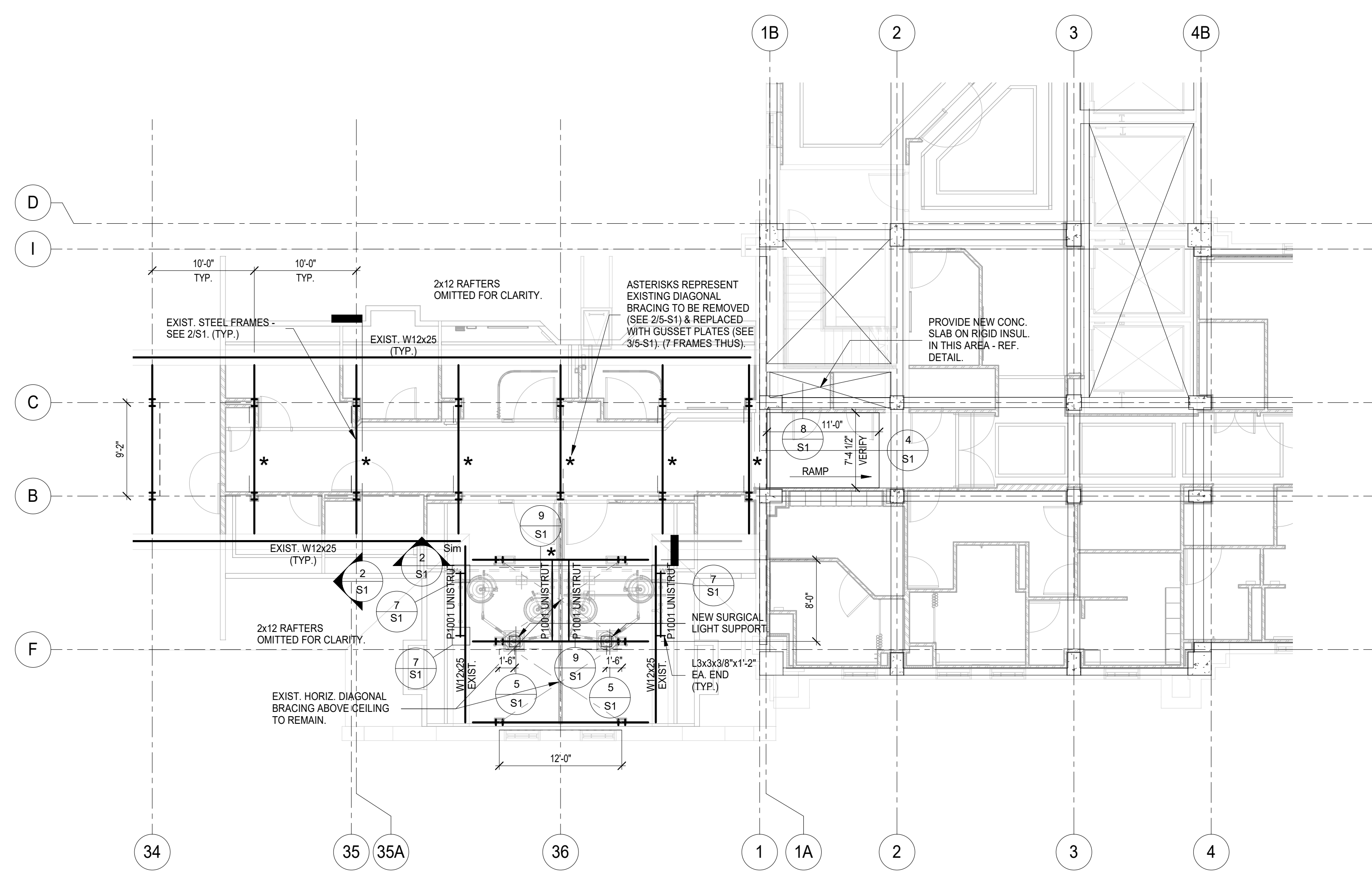
1 PHASE ONE PLAN
SCALE: 1/8" = 1'-0"

one foot = three inches
one foot = one and one half inches
one foot = one inch
one foot = three quarters inch
one foot = three eighths inch
one foot = one quarter inch
one foot = one eighth inch

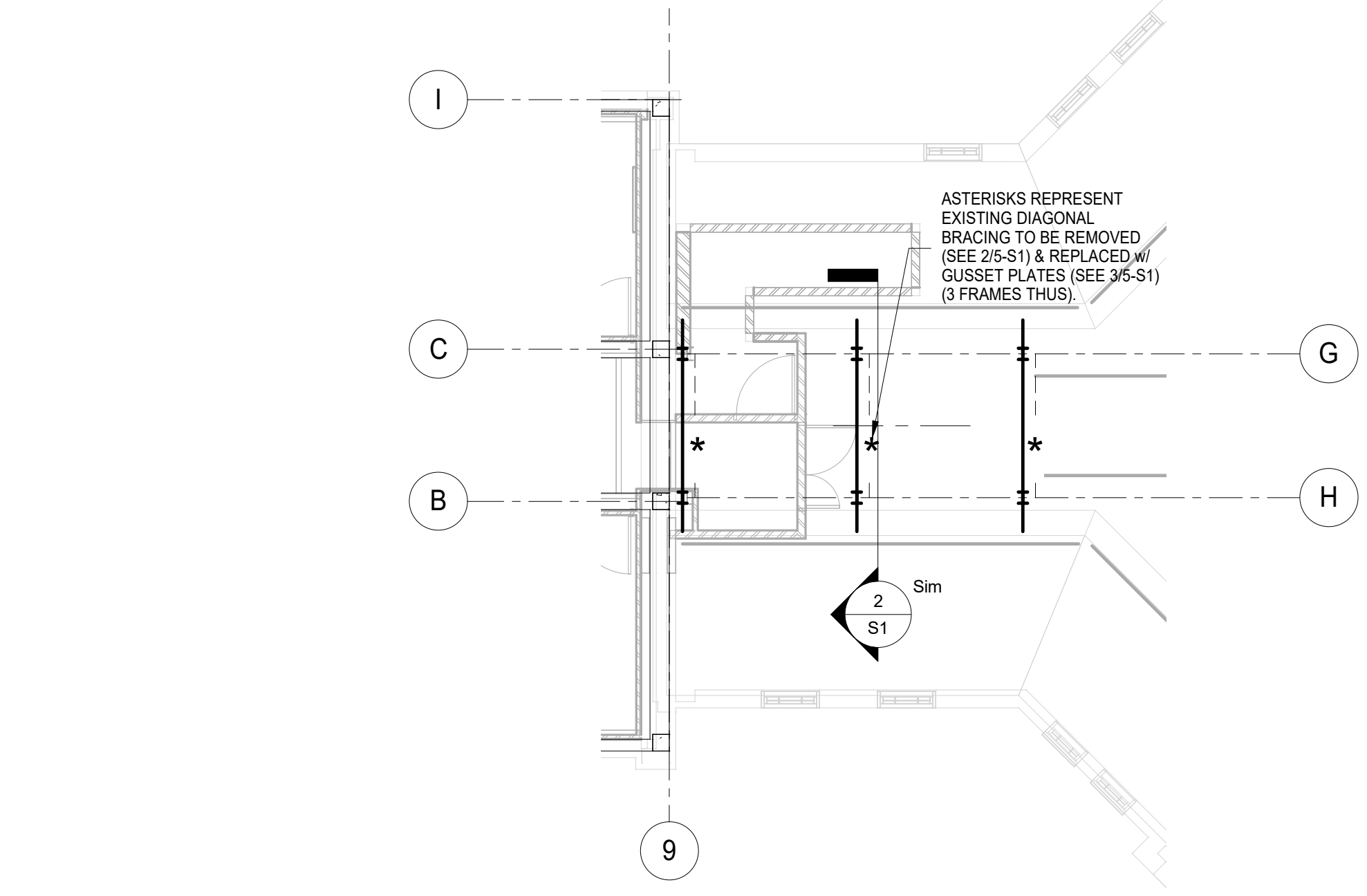
100% CONSTRUCTION DRAWINGS	
Project Title V.A. HEALTH CARE SYSTEM RENOVATE 5TH FLOOR SURGERY	Project Number 438-15-201
Location SIoux FALLS, SOUTH DAKOTA	Building Number 5
Date OCTOBER 11, 2017	Drawing Number 5-G1001
Checked Checker	Drawn Author
Dwg. 2 of 60	

Office of Construction and Facilities Management

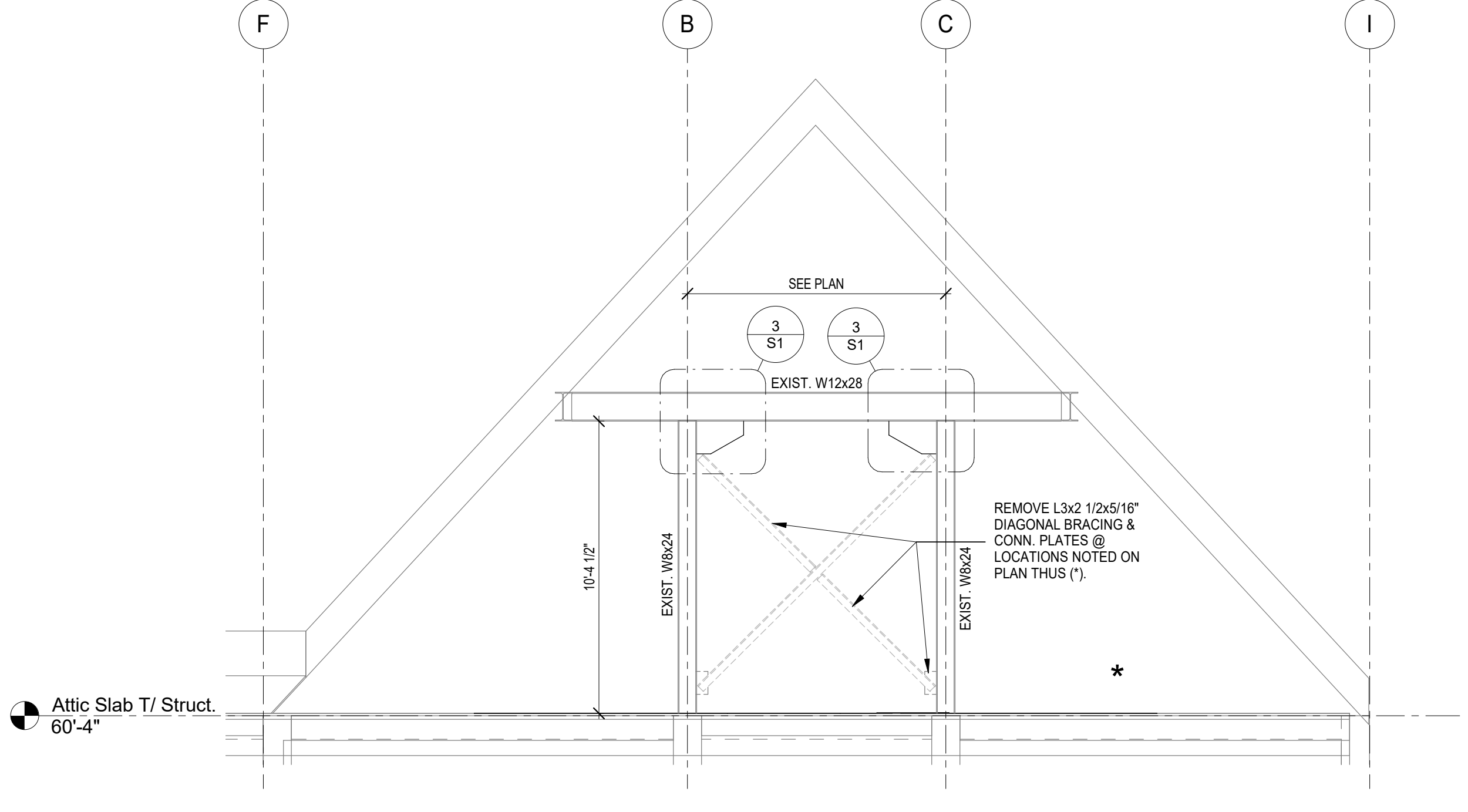
Revisions: _____ Date: _____	CONSULTANTS: 4609 SOUTH TECHLINK CIRCLE • SIOUX FALLS, SD 57106 PHONE: (605) 362-3753 • FAX: (605) 362-3759 RAPID CITY, SD • SIOUX FALLS, SD • CASPER, WY • CEDAR RAPIDS, IA • BISMARCK, ND	SEAL: RISE STRUCTURAL ASSOCIATES INC. 101 Railroad Ave. - PO Box 39 Harrisburg, SD 57032 (605)743-2510 fax:(605)743-2513	ARCHITECT: MSH ARCHITECTS 625 S. MINNESOTA AVENUE, SUITE 204 SIOUX FALLS, SOUTH DAKOTA 57104-4873 TELE: (605) 332-7850 FAX: (605) 332-3539	Drawing Title PHASING PLANS Approved: Project Director
------------------------------	---	--	--	---



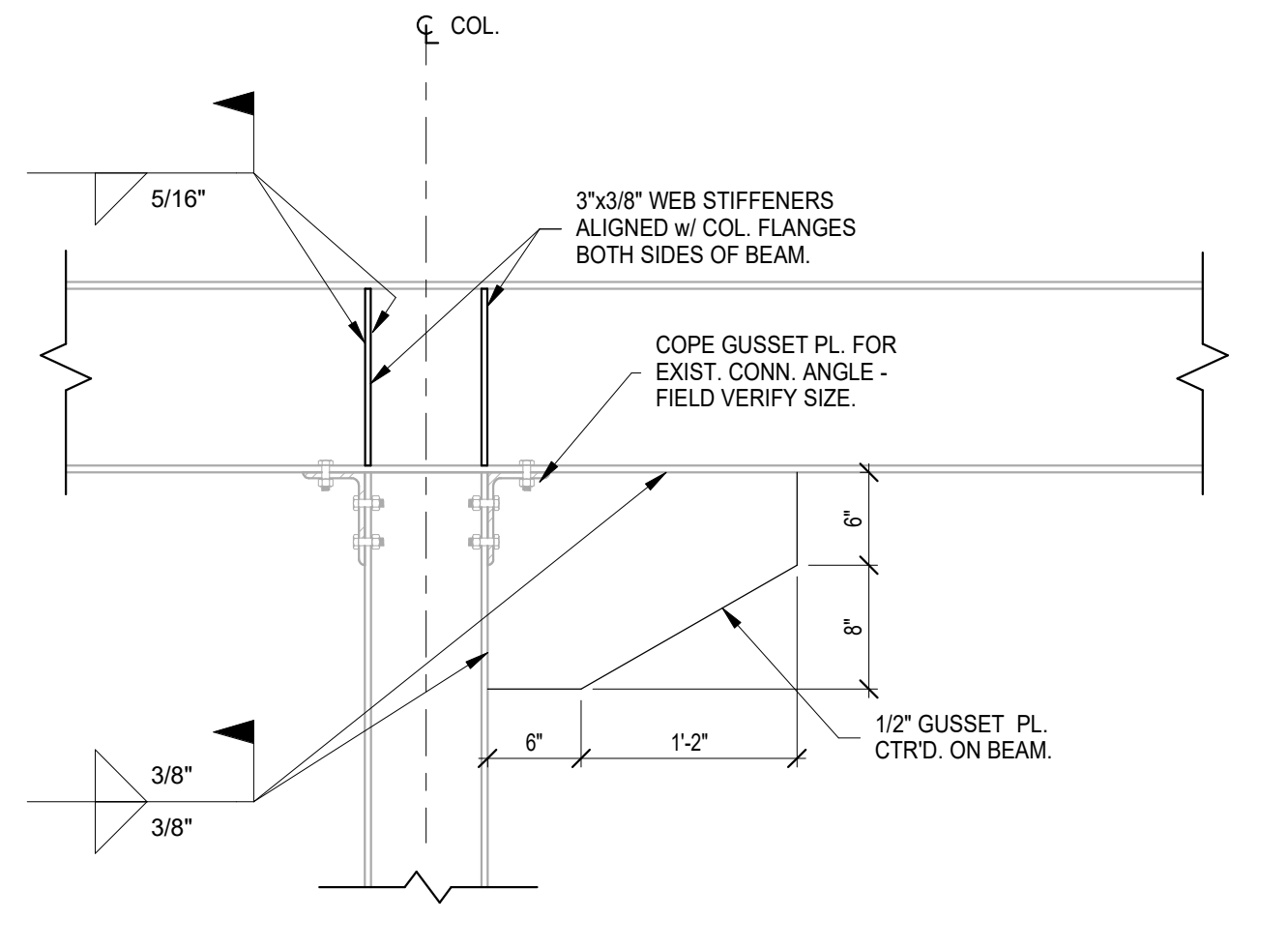
1 EXISTING ROOF FRAMING PLAN AT FIFTH FLOOR - SOUTH END
1/8" = 1'-0"



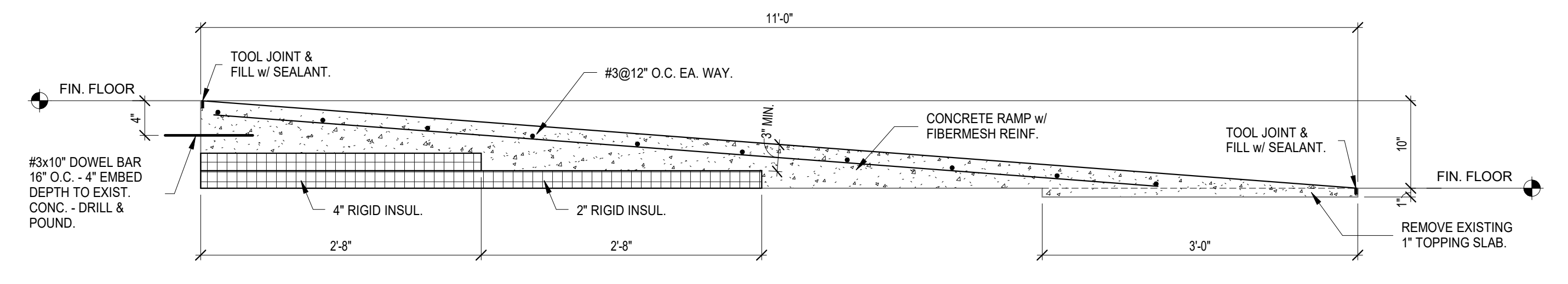
6 EXISTING ROOF FRAMING PLAN AT FIFTH FLOOR - NORTH END
1/8" = 1'-0"



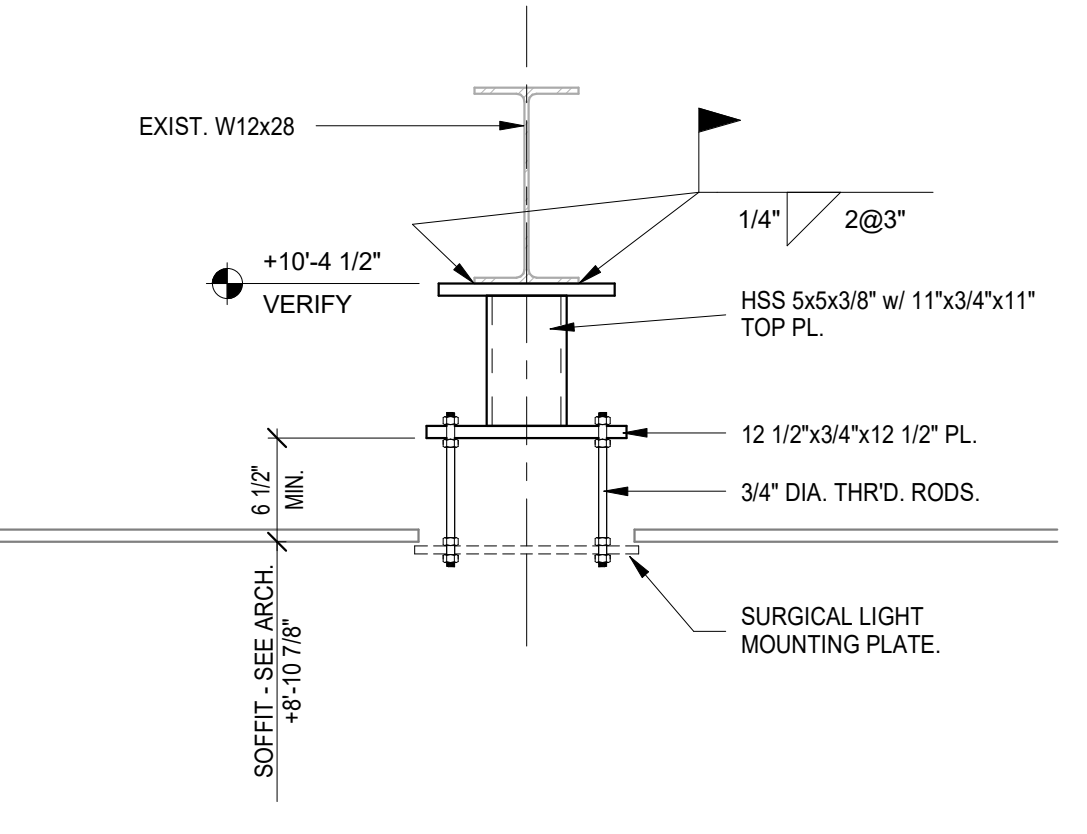
2 EXISTING ATTIC FRAMING SECTION
1/4" = 1'-0"



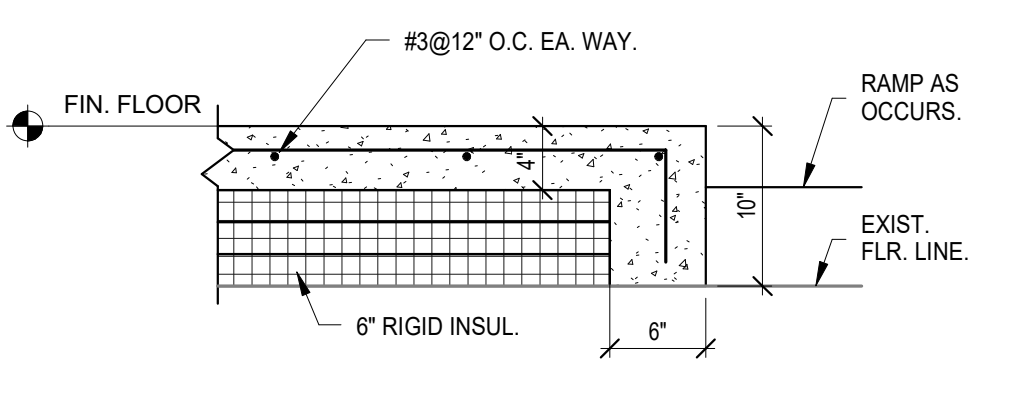
3 BRACE DETAIL
1" = 1'-0"



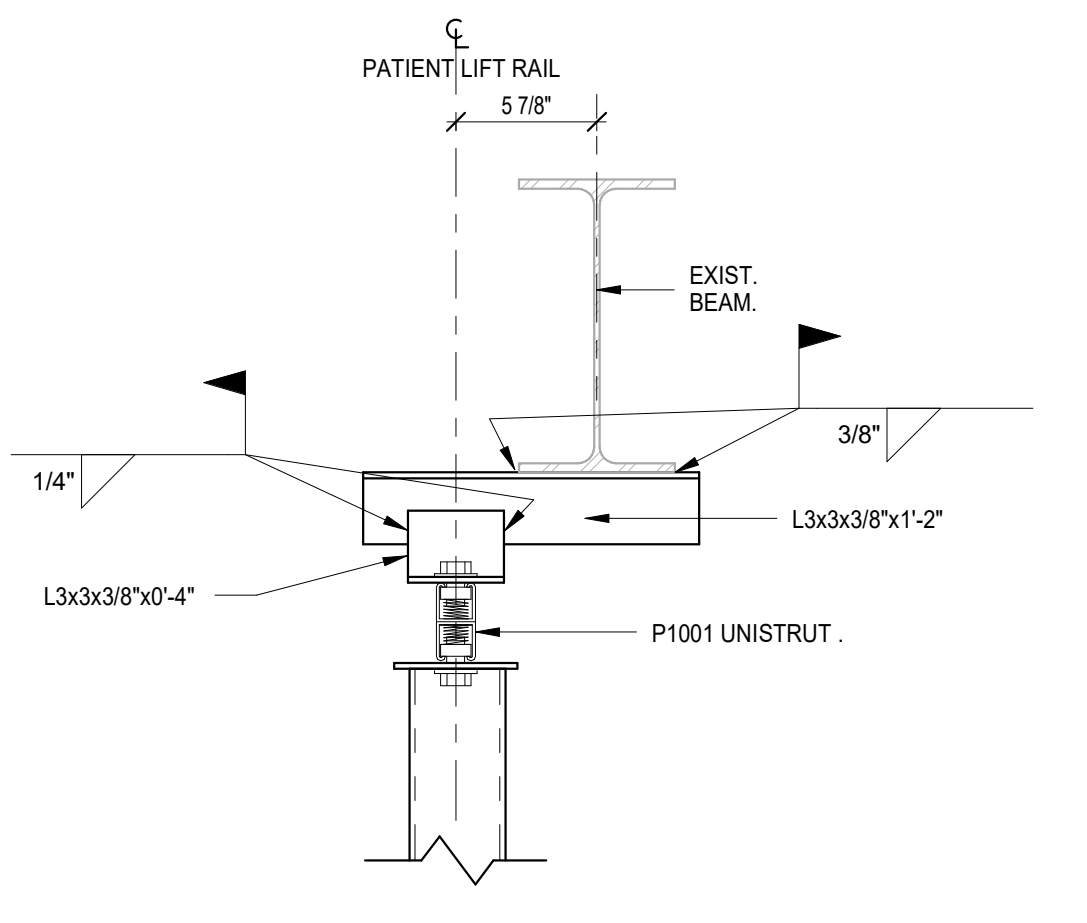
4 RAMP SECTION
1" = 1'-0"



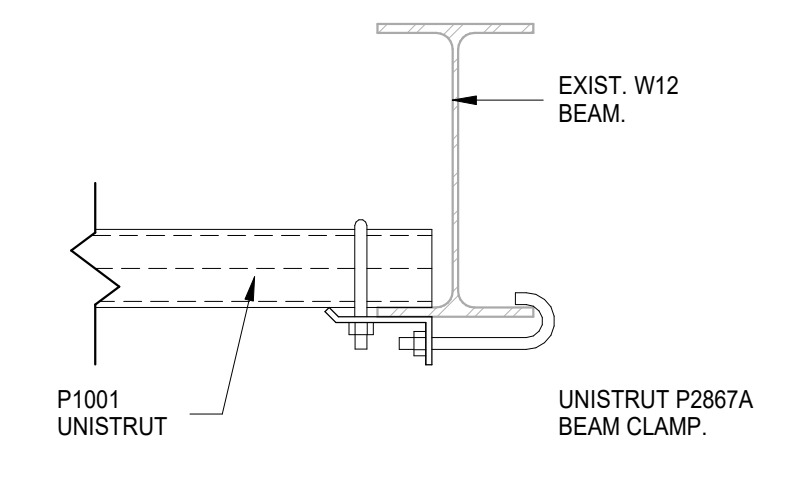
5 SURGICAL LIGHT SUPPORT
1" = 1'-0"



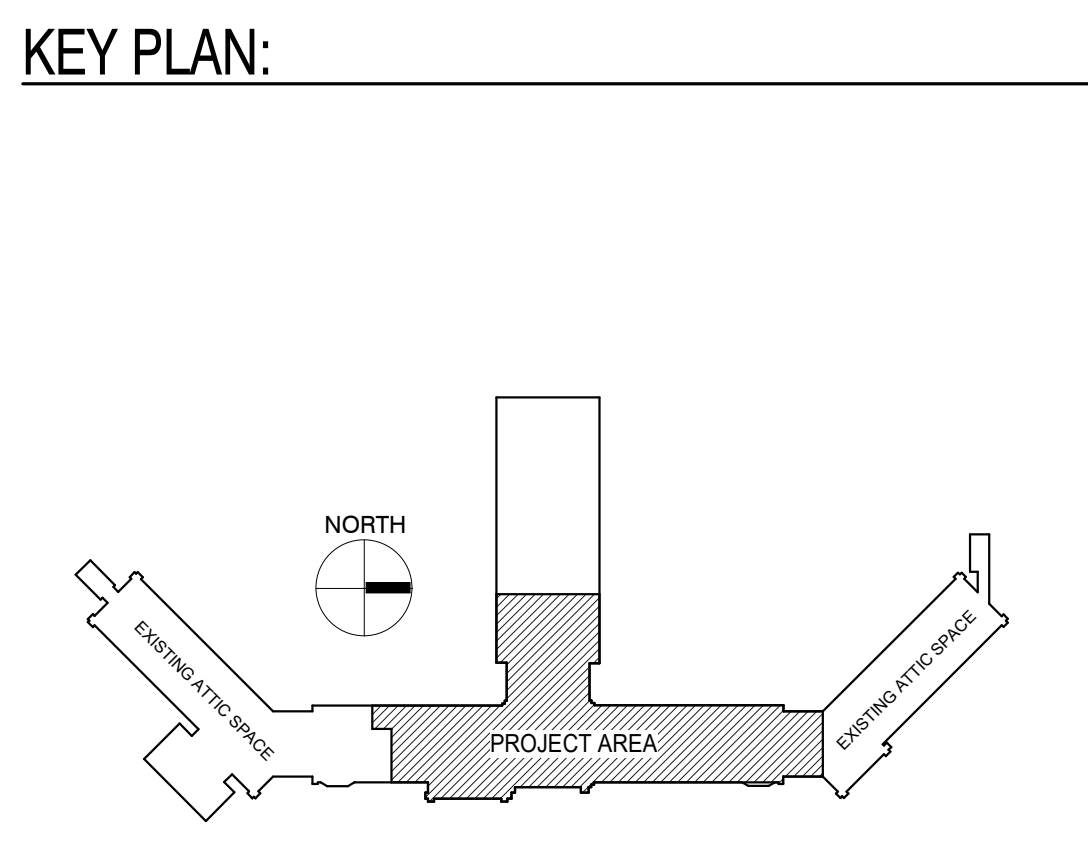
8 RAISED FLOOR DETAIL
1" = 1'-0"



7 CONN. DETAIL w/ ANGLE
1 1/2" = 1'-0"



9 CONN. DETAIL @ BEAM
1 1/2" = 1'-0"



KEY PLAN:

GENERAL CONTRACTOR SHALL VERIFY EXISTING DIMENSIONS & ELEVATIONS NOTED ON STRUCTURAL PLAN. NOTIFY A/E IMMEDIATELY OF ANY DISCREPANCIES.

100% CONSTRUCTION DRAWINGS

Project Title V.A. HEALTH CARE SYSTEM RENOVATE 5TH FLOOR SURGERY		Project Number 438-15-201	
Location SIoux FALLS, SOUTH DAKOTA		Building Number 5	
Date OCTOBER 17, 2017	Checked KAQ	Drawn KMS	Drawing Number 5-S1
Approved: Project Director		Dwg. 3 of 60	

Office of Construction and Facilities Management
Department of Veterans Affairs

CONSULTANTS:

WPE WEST PLAINS ENGINEERING, INC.
4609 SOUTH TECHLINK CIRCLE • SIOUX FALLS, SD 57106
PHONE: (605) 362-3753 • FAX: (605) 362-3759
WWW.WESTPLAINSENGINEERING.COM
RAPID CITY, SD • SIOUX FALLS, SD • CASPER, WY • CEDAR RAPIDS, IA • BISMARCK, ND

RISE STRUCTURAL ASSOCIATES INC.
101 Railroad Ave. - PO Box 39
Harrisburg, SD 57032
(605) 743-2510
fax (605) 743-2513

SEAL:

REGISTERED PROFESSIONAL ENGINEER
REG. NO. 11152
JUSTIN CHRISTENSEN
SOUTH DAKOTA
1/18/2017

ARCHITECT:

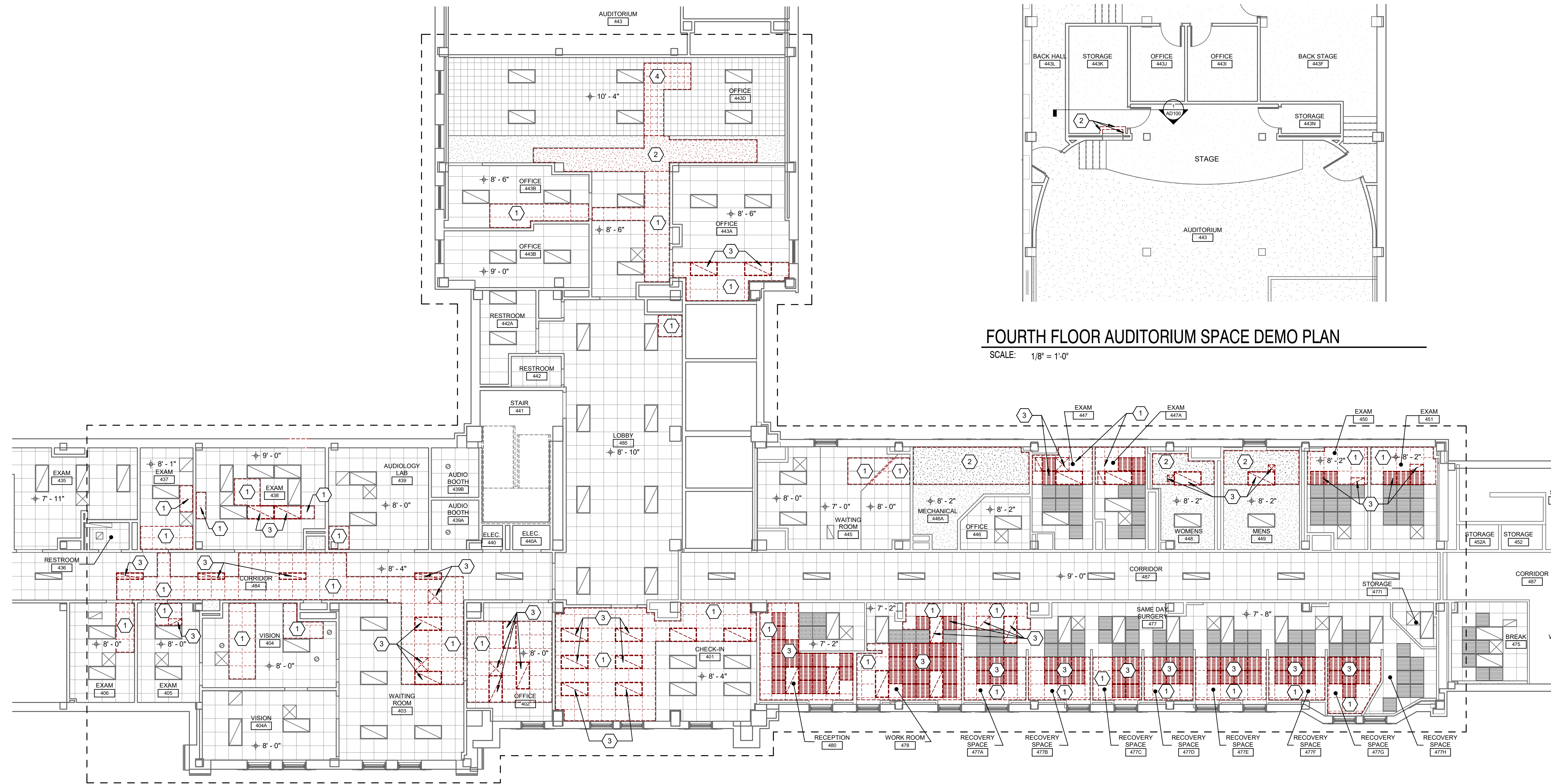
MSH ARCHITECTS
625 S. MINNESOTA AVENUE, SUITE 204
SIOUX FALLS, SOUTH DAKOTA 57104-4873
TELE: (605) 332-7850 FAX: (605) 332-3539

Drawing Title
EXISTING ROOF FRAMING PLAN AT FIFTH FLOOR

three inches = one foot
one and one half inches = one foot
one inch = one foot
three quarters inch = one foot
one half inch = one foot
three eighths inch = one foot
one quarter inch = one foot
one eighth inch = one foot

one foot = one foot
 three inches = one foot
 one and one half inches = one foot
 one inch = one foot
 one half inch = one foot
 three quarters inch = one foot
 three eighths inch = one foot
 one quarter inch = one foot
 one eighth inch = one foot
 one sixteenth inch = one foot

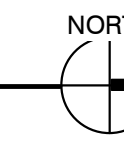
A
 B
 C
 D
 E
 F



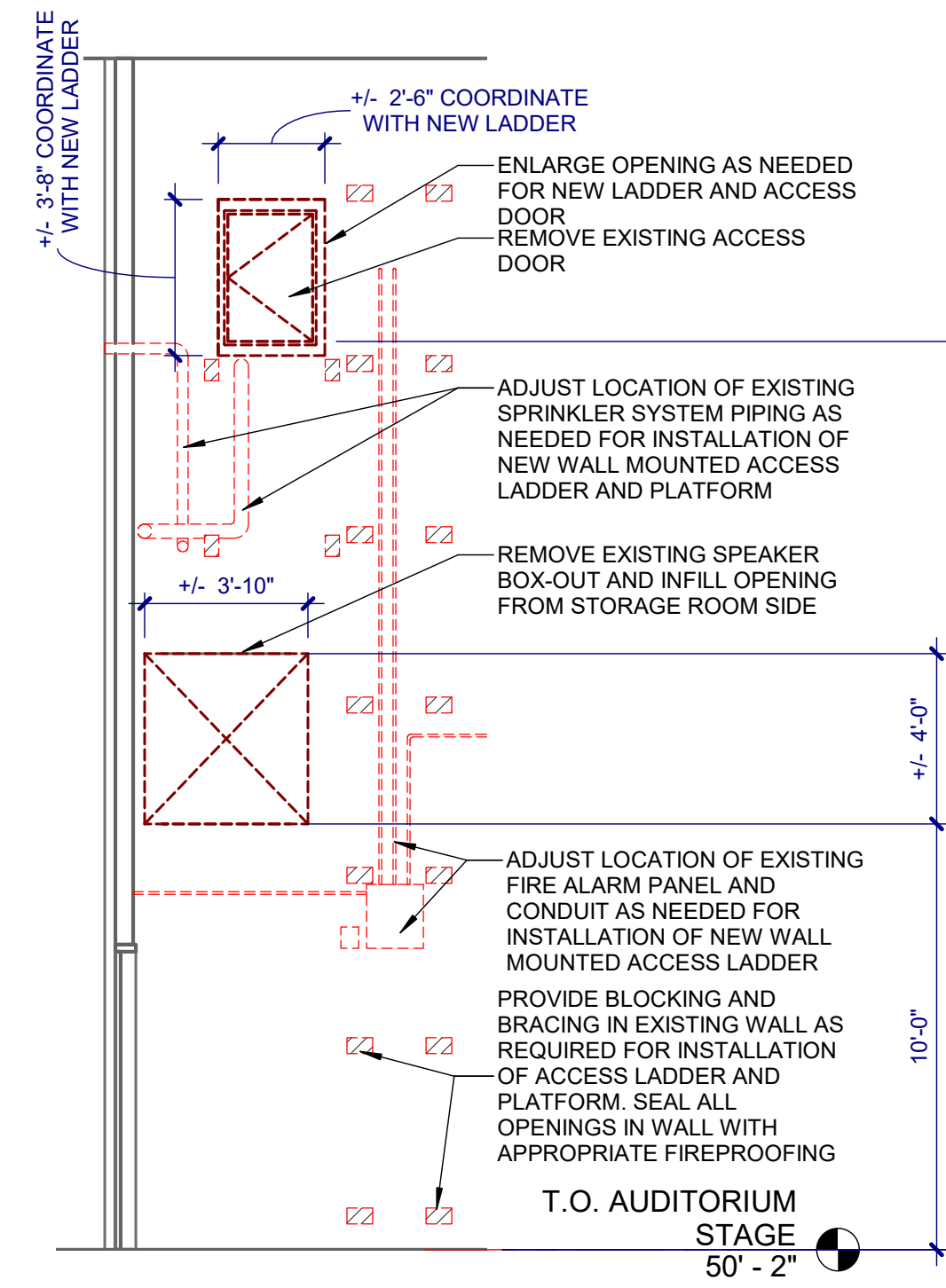
FOURTH FLOOR AUDITORIUM SPACE DEMO PLAN
 SCALE: 1/8" = 1'-0"

FOURTH FLOOR CEILING DEMOLITION PLAN
 SCALE: 1/8" = 1'-0"

PHASING NOTE:
 WORK ON THIS FLOOR MUST BE CLOSELY COORDINATED WITH THE VA TO ALLOW FOR CONTINUED OPERATIONS ON THIS FLOOR. (AFTER HOURS WORK MAY BE REQUIRED)



--- DENOTES PROJECT LIMITS LINE



1 WALL LADDER DETAIL
 SCALE: 1/4" = 1'-0"

DEMOLITION KEYNOTES:

- 1 REMOVE AND SALVAGE ACOUSTIC TILE CEILING IN THIS AREA FOR REINSTALLATION AFTER ABOVE CEILING WORK IS COMPLETE. COORDINATE WITH MECHANICAL DRAWINGS FOR EXACT LOCATIONS.
- 2 REMOVE PORTION OF GYPSUM BOARD CEILING FOR ABOVE CEILING WORK IN THIS AREA. COORDINATE WITH MECHANICAL DRAWINGS FOR EXACT LOCATIONS.
- 3 INDEPENDENTLY SUSPEND EXISTING LIGHTS, DIFFUSERS AND OTHER HVAC AND ELECTRICAL EQUIPMENT WHILE CEILING SYSTEM IS REMOVED FOR ABOVE CEILING WORK. RESET IN CEILING GRID WHEN ABOVE CEILING WORK IS COMPLETE. FIELD VERIFY EXISTING CONDITIONS FOR OTHER CEILING HUNG EQUIPMENT.
- 4 REMOVE AND SALVAGE ADHEARED 12" X 12" CEILING TILE IN THIS AREA FOR REINSTALLATION AFTER ABOVE CEILING WORK IS COMPLETE. COORDINATE WITH MECHANICAL DRAWINGS FOR EXACT LOCATIONS.

DEMOLITION GENERAL NOTES:

- A. CONTRACTOR SHALL VERIFY ALL EXISTING CONDITIONS AND DIMENSIONS PRIOR TO BEGINNING CONSTRUCTION.
- B. ALL SURFACES OR FINISHES DAMAGED DURING CONSTRUCTION SHALL BE REPAIRED OR REPLACED AT NO COST TO THE OWNER AND SHALL MATCH ADJACENT MATERIALS.
- C. REFER TO MECHANICAL AND ELECTRICAL DRAWINGS FOR ADDITIONAL DEMOLITION NOTES.
- D. CUT EXISTING CONCRETE FLOOR AS NECESSARY TO ACCOMMODATE NEW PIPING, CONDUIT, OR OTHER WORK. PATCH BACK TO MATCH.
- E. SAW CUT AND REMOVE MASONRY TO ACCOMMODATE NEW OPENINGS. BRACE OPENING UNTIL NEW LINTELS ARE INSTALLED.
- F. WORK ON THIS FLOOR MUST BE CLOSELY COORDINATED WITH THE VA TO ALLOW FOR CONTINUED OPERATIONS ON THIS FLOOR. (AFTER HOURS WORK MAY BE REQUIRED)
- G. CONTRACTOR SHALL TAKE ALL MEASURES AND PROVIDE ALL MATERIAL NECESSARY FOR PROTECTING EXISTING EQUIPMENT AND PROPERTY IN AFFECTED AREAS OF CONSTRUCTION AGAINST DUST AND DEBRIS. SO THAT EQUIPMENT AND AFFECTED AREAS TO BE USED IN THE MEDICAL CENTERS OPERATIONS WILL NOT BE HINDERED. CONTRACTOR SHALL PERMIT ACCESS TO DEPARTMENT OF VETERANS AFFAIRS PERSONNEL AND PATIENTS THROUGH OTHER CONSTRUCTION AREAS WHICH SERVE AS ROUTES OF ACCESS TO SUCH AFFECTED AREAS AND EQUIPMENT. THESE ROUTES WHETHER ACCESS OR EGRESS SHALL BE ISOLATED FROM THE CONSTRUCTION AREA BY TEMPORARY PARTITIONS AND HAVE WALKING SURFACES, LIGHTING ETC TO FACILITATE PATIENT AND STAFF ACCESS. COORDINATE ALTERATION WORK IN AREAS OCCUPIED BY DEPARTMENT OF VETERANS AFFAIRS SO THAT MEDICAL CENTER OPERATIONS WILL CONTINUE DURING THE CONSTRUCTION PERIOD. COORDINATE WITH SPECIFICATIONS SECTION 01 0000 - GENERAL REQUIREMENTS AND 01 0100 - MEDICAL CENTER REQUIREMENTS FOR WORK ON THIS FLOOR.

ASBESTOS CONTAINING MATERIAL

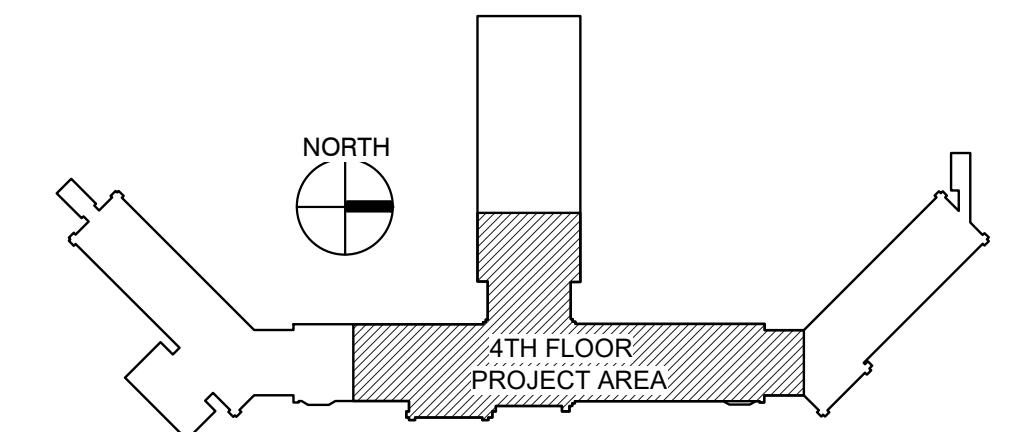
THE FOLLOWING AREAS ARE KNOWN TO BE ACM AND MUST BE ABATED IF ACM MATERIALS ARE DISTURBED OR ENCOUNTERED:

- RADIATOR TRANSIT AND PIPE INSULATION AT ALL EXISTING RADIATORS AND OTHER PIPE AND PIPE FITTING LOCATIONS.
- WALL/CEILING TEXTURE IN ROOM 443.

CONFIRM THESE WITH THE ASBESTOS REPORT INCLUDED IN THE PROJECT MANUAL.

REMOVAL OF ASBESTOS CONTAINING MATERIAL (ACM) SHALL COMPLY WITH ALL CITY, STATE, AND FEDERAL REGULATIONS. REMOVAL OF ACM SHALL CONFORM TO THE LATEST EDITION OF ALL APPLICABLE OSHA AND AHERA REGULATIONS. ALSO COMPLY WITH SOUTH DAKOTA ENVIRONMENTAL AND NATURAL RESOURCES AND NESHAPS (40 CFR 60 & 62). WORK PRACTICES SHALL CONFORM TO NIOSH GUIDANCE WORK PRACTICES FOR THE REMOVAL OF ASBESTOS. IF ANY ADDITIONAL ACM OR POTENTIAL ACM IS IDENTIFIED DURING DEMOLITION OR CONSTRUCTION, THE CONTRACTOR SHALL NOTIFY THE CONTRACTING OFFICER IMMEDIATELY. ANY CONFIRMED ACM SHALL BE ABATED BY THE CONTRACTOR PER THE ABOVE REQUIREMENTS.

KEY PLAN:



100% CONSTRUCTION DRAWINGS

Project Title V.A. HEALTH CARE SYSTEM RENOVATE 5TH FLOOR SURGERY		Project Number 438-15-201		Office of Construction and Facilities Management
Building Number 5		Drawing Number 5-AD100		
Location SIoux FALLS, SOUTH DAKOTA		Date OCTOBER 17, 2017	Checked DGS	Drawn RTG
		Dwg. 4 of 60		Department of Veterans Affairs

CONSULTANTS:

WPE WEST PLAINS ENGINEERING
 4609 SOUTH TECHLINK CIRCLE • SIOUX FALLS, SD 57106
 PHONE: (605) 362-3753 • FAX: (605) 362-3759
 RAPID CITY, SD • SIOUX FALLS, SD • CASPER, WY • CEDAR RAPIDS, IA • BISMARK, ND

RISE STRUCTURAL ASSOCIATES INC.
 101 Railroad Ave. - PO Box 39
 Harrisburg, SD 57032
 (605) 743-2510
 fax: (605) 743-2513

SEAL:

REGISTERED ARCHITECT
 REG. NO. 3907
 ROBIN J. WICKLER
 SOUTH DAKOTA

ARCHITECT:

MSH ARCHITECTS
 625 S. MINNESOTA AVENUE, SUITE 204
 SIOUX FALLS, SOUTH DAKOTA 57104-4873
 TELE: (605) 332-7850 FAX: (605) 332-3539

Drawing Title
FOURTH FLOOR DEMOLITION PLANS

Approved: Project Director