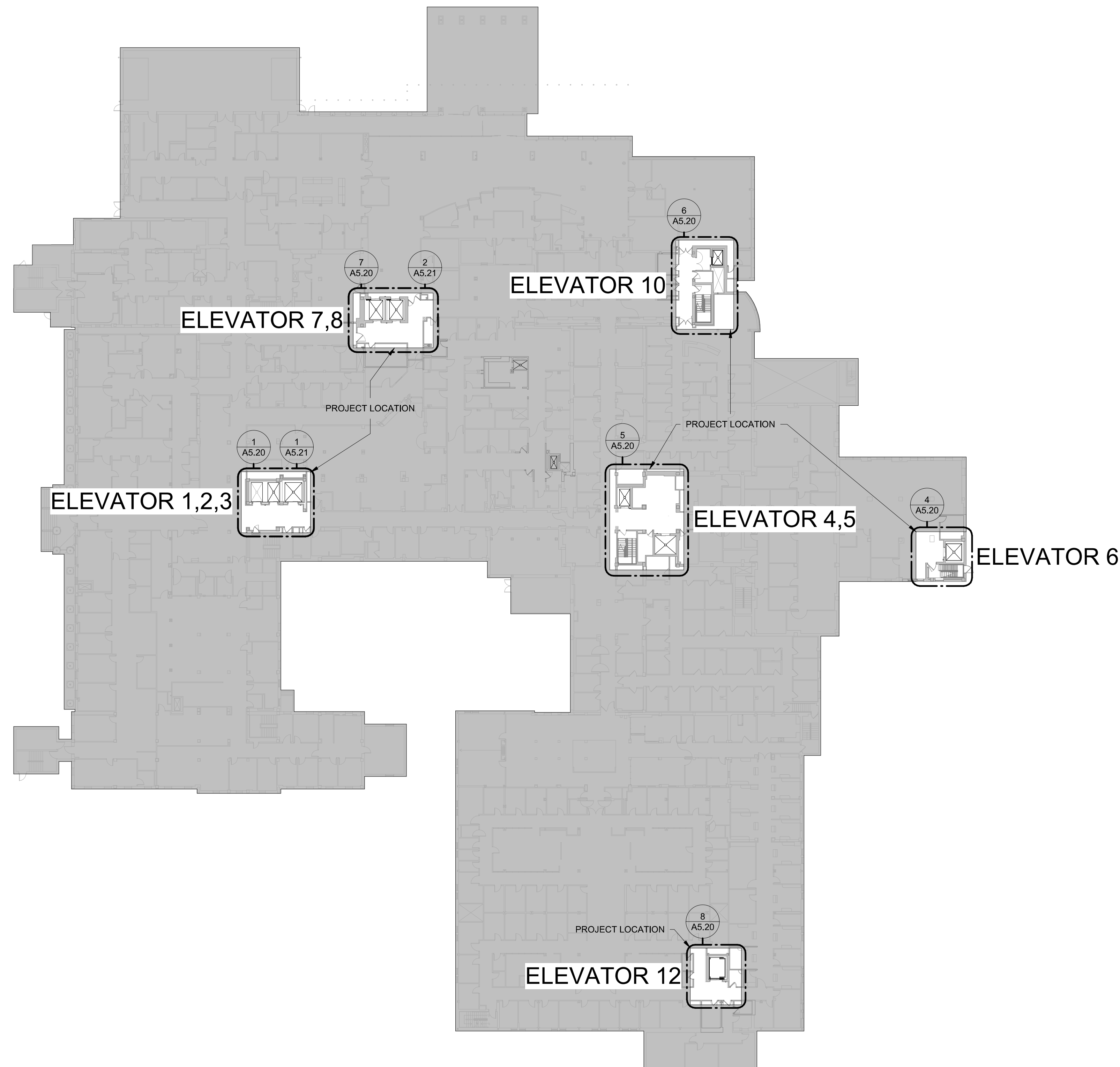


**GENERAL NOTES:**

1. THIS PROJECT INCLUDES THE DESIGN, INSTALLATION, AND REMODEL OF AN EXISTING ADDRESSABLE FIRE ALARM SYSTEM FOR THE REMODELED AREAS FOR THE ELEVATOR REHAB PROJECT OF THE EXISTING BUILDING AS SHOWN ON THESE PLANS PER NFPA 72 (2019 ed.), LOCAL BUILDING CODES, AND THE VA FIRE PROTECTION DESIGN MANUAL (SEVENTH ed.). ALL DEMOLITION AND DISPOSAL OF EXISTING SYSTEM COMPONENTS SHALL BE PERFORMED AS REQUIRED.
2. FINAL DEVICE LOCATION AND CIRCUIT ROUTING IS TO BE DETERMINED BY THE FIRE ALARM CONTRACTOR AND IS SUBJECT TO APPROVAL BY THE ENGINEER OF RECORD.
3. REFER TO SPECIFICATION SECTION 28 31 00 FOR ADDITIONAL FIRE ALARM SYSTEM INFORMATION.
4. ALL DEVICES SHALL BE UL LISTED AND FM APPROVED PER THE VA FIRE PROTECTION DESIGN MANUAL.
5. DEVICES ARE REQUIRED TO BE PROTECTED DURING PAINTING. EXISTING SMOKE DETECTORS TO REMAIN IN AREAS ADJACENT TO THE WORK AREA SHALL BE PROTECTED AGAINST CONTAMINATION DURING CONSTRUCTION.
6. CEILING MOUNTED DEVICES SHALL BE LOCATED IN THE CENTER POINT OF SQUARE CEILING TILES AND ALLOWED TO BE IN THE QUARTER AND/OR CENTER POINTS OF RECTANGULAR CEILING TILES.
7. NOT ALL REQUIRED DEVICES AND WIRING ARE SHOWN. CONSIDERATION OF ADDITIONAL DEVICES AND WIRING DUE TO INTERFERENCE WITH OTHER TRADES, OBSTRUCTIONS, IMPROVED AESTHETICS, OR OWNER/AHJ REQUESTS SHALL BE MADE PRIOR TO BID BY THE FIRE ALARM CONTRACTOR.
8. FIRE ALARM CONTRACTOR TO PROVIDE ALL NECESSARY MATERIAL TO PROVIDE COMPLETE SYSTEM(S) TO COMPLY WITH NFPA 72, LOCAL BUILDING CODES, AND THE VA FIRE PROTECTION DESIGN MANUAL. ANY AND ALL CLARIFICATIONS TO BID DOCUMENTS SHALL BE MADE PRIOR TO BID.
9. THE FIRE ALARM CONTRACTOR SHALL INSPECT THE SITE PRIOR TO BID. NO ALLOWANCES FOR EXTRA DEVICES ETC. WILL BE ALLOWED AFTER AWARD OF CONTRACT DUE TO MISUNDERSTANDING OF WORK INVOLVED OR LACK OF KNOWLEDGE OF ANY PROJECT SITE CONDITIONS.
10. CONTROL PANEL AND DEVICE LOCATIONS SHOWN ON THESE PLANS IS CONCEPTUAL BUT IS TO BE CLOSELY FOLLOWED BY THE FIRE ALARM CONTRACTOR. ANY MAJOR CHANGES TO WHAT IS BEING INDICATED ON THESE PLANS SHALL FIRST BE APPROVED BY THE ARCHITECT AND ENGINEER OF RECORD.
11. ALL ARCHITECTURAL, STRUCTURAL, MECHANICAL, & ELECTRICAL FEATURES INDICATED ON THE FA SHEETS SHALL BE VERIFIED BY CONSULTING THE A/S/M&E SHEETS.
12. ALL CALCULATIONS ARE THE RESPONSIBILITY OF THE FIRE ALARM CONTRACTOR. ANY AND ALL CLARIFICATION TO BID DOCUMENTS SHALL BE MADE PRIOR TO BID.
13. SHOULD ANY EXISTING SYSTEM DEFICIENCIES NOT INDICATED ON THESE PLANS BE DISCOVERED AS PART OF CONDUCTING THE WORK INCLUDED IN THIS SCOPE, THEY SHALL BE BROUGHT TO THE ATTENTION OF THE ENGINEER OF RECORD IMMEDIATELY.
14. THESE PLANS SHALL BE USED AS A GENERAL GUIDE IN THE GENERATION OF THE FIRE ALARM CONTRACTOR'S BID AND ARE NOT INTENDED TO INDICATE THE ENTIRE EXTENT OF ALARM PROTECTION REQUIRED. ANY AERAS REQUIRED TO BE PROTECTED PER NFPA 72 THAT MAY OR MAY NOT BE SHOWN WITH PROTECTION ON THESE PLANS SHALL BE INCLUDED IN THE CONTRACTOR'S BID.
15. FIRE ALARM CONTRACTOR SHALL BE RESPONSIBLE FOR THE REMOVAL AND RE-INSTALLING OF EXISTING CEILING TILE AND WALLS NOT REMOVED BY THE GENERAL CONTRACTOR FOR THE DEMOLITION OF EXISTING FIRE ALARM DEVICES, WIRING, ETC. ANY CEILING OR WALL COMPONENTS DAMAGED SHALL BE REPLACED OR PATCHED WITH NEW BY THIS CONTRACTOR.

INPUT DEVICE ↓	OUTPUT →										
Duct Smoke Detector*											
Area Smoke Detector*	X	X	X								X
Door Release Smoke Detector*	X	X	X			X	X				X
Elevator Smoke Detector*	X	X	X					X			
Manual Pull Station	X	X	X			X					X
Elevator Machine Room Heat Detector	X	X	X						X		
Generator Room Heat Detector	X	X	X							X	
Sprinkler Waterflow / Pressure Switch	X	X	X			X				X	
Water Control Valve Tamper				X							
Fire Pump (Any alarm condition required by NFPA 20)				X							
High/Low Pressure Dry-Pipe Sprinkler System				X							
Kitchen Hood Suppression System	X	X	X			X				X	X
Gas Extinguishing Systems	X	X	X			X				X	
Dry-Pipe Valve Room Temperature Alarm				X							
Dedicated Fire Water Storage Tank Low Level				X							
Dedicated Fire Water Storage Tank Low Temperature				X							

A - Do not provide duct detectors in dedicated (100%) exhaust fans, they should continue to run.  
 B - The facility is permitted to sound the general alarm or notify necessary staff in lieu of initiating a supervisory signal to be consistent with the operation of existing systems.



1 FLOOR PLAN - LEVEL 1 - OVERALL REFERENCE PLAN  
 1/32" = 1'-0"

**CONSULTANTS:**

**SUMMIT**  
 FIRE PROTECTION  
 SUMMIT FIRE CONSULTING  
 575 MINNEHAHA AVE WEST  
 ST. PAUL, MINNESOTA 55103  
 (612) 387-7050



**ARCHITECT/ENGINEERS**

**FOURFRONT**  
 DESIGN INC.  
 FOURFRONT DESIGN, INC.  
 517 7TH STREET  
 RAPID CITY, SOUTH DAKOTA 57701  
 PH: (605) 342-9470  
 FAX: (605) 342-2377  
 WWW.FOURFRONTDESIGN.COM

Drawing Title  
**FIRE ALARM -  
 GENERAL NOTES**

Approved: Project Director  
 Owner

Project Title  
**REFURBISH ELEVATORS AND  
 REPLACE CONTROLS**

Location  
 2101 ELM STREET  
 FARGO, ND 58102

Project Number  
 437-22-101

Building Number  
 Drawing Number  
**FA1.00**

Office of  
 Construction  
 and Facilities  
 Management

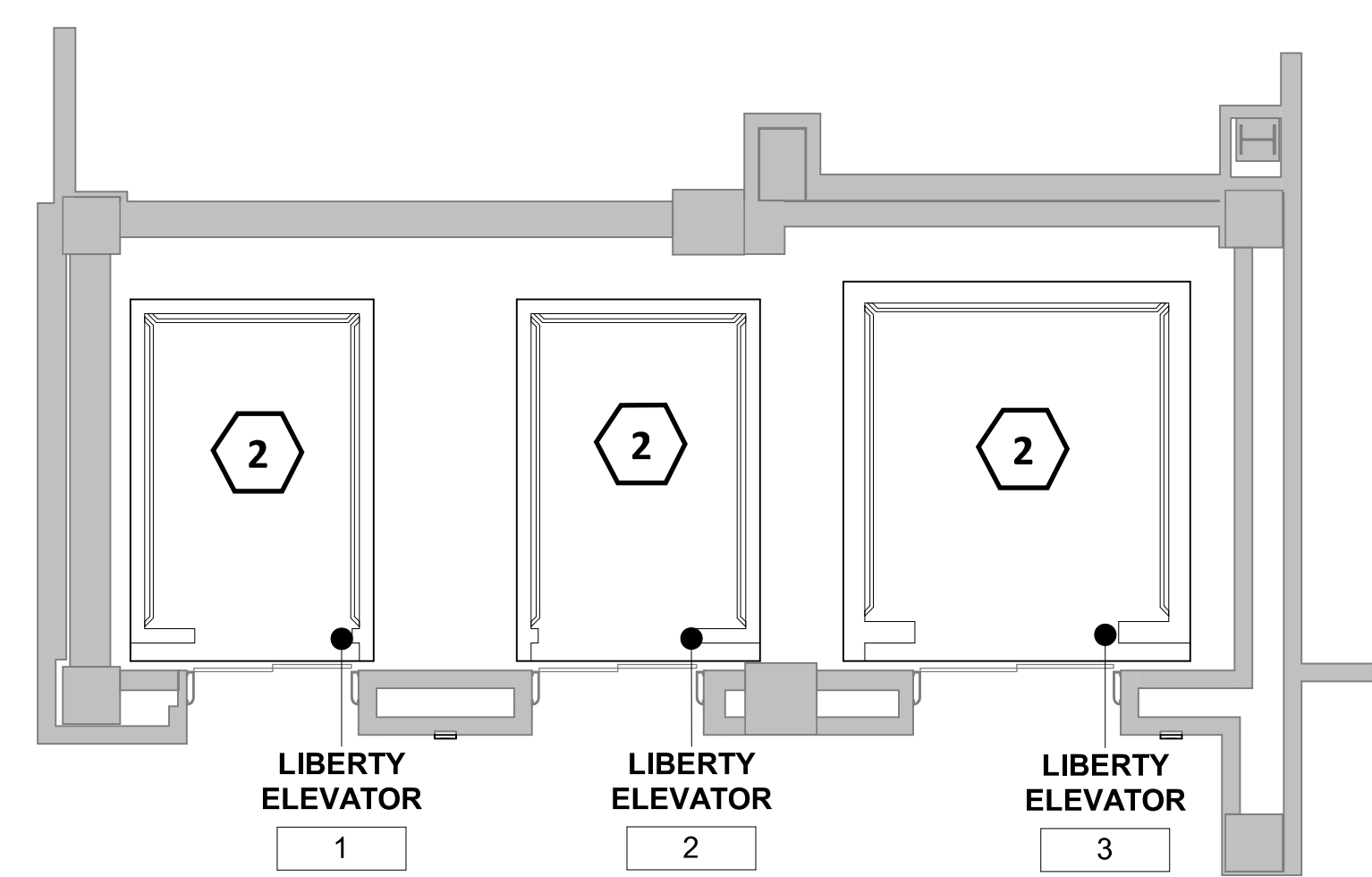


# GENERAL NOTES

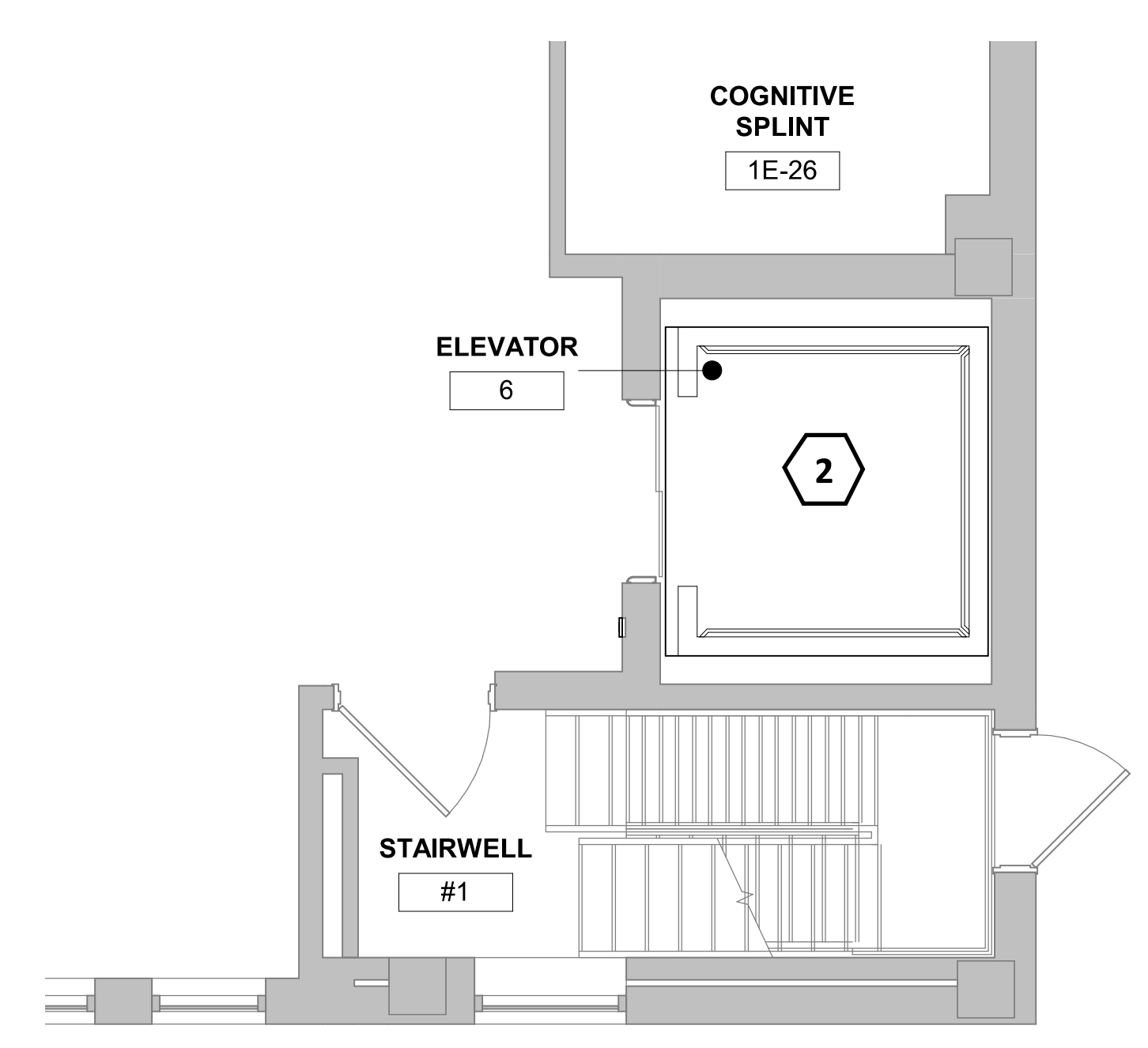
1. REMOVE EXISTING DEVICES AS NOTED.
2. MAKE MODIFICATIONS TO PROGRAMMING DURING CONSTRUCTION AND FOR DEMOLITION OF DEVICES.
3. COORDINATE ALL SHUT DOWNS WITH THE GENERAL CONTRACTOR AND OWNER'S REPRESENTATIVE.
4. MACHINE ROOMS FOR HYDRAULIC ELEVATORS (10 + 12) TO REMAIN PROTECTED AS IS.

# KEYNOTES #

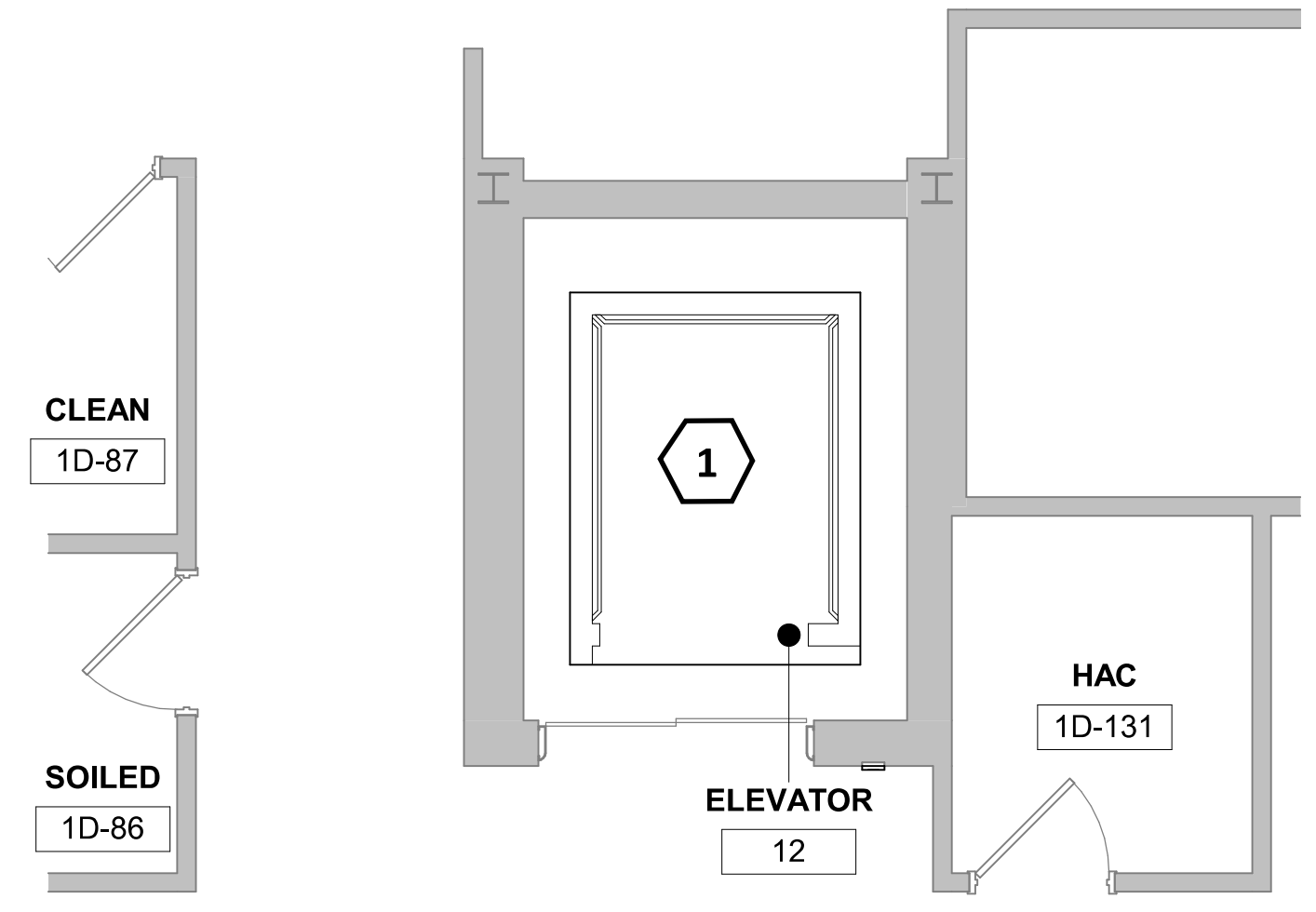
- 1 REMOVE EXISTING HEAT AND SMOKE DETECTOR WITHIN PIT. ONE DETECTOR PER PIT.
- 2 REMOVE EXISTING HEAT AND SMOKE DETECTOR AT TOP OF SHAFT/MACHINE ROOM WHERE PROVIDED. REMOVE PROGRAMMING FOR SHUNT TRIP FROM FIRE ALARM SEQUENCE. ONE DETECTOR PER SHAFT.



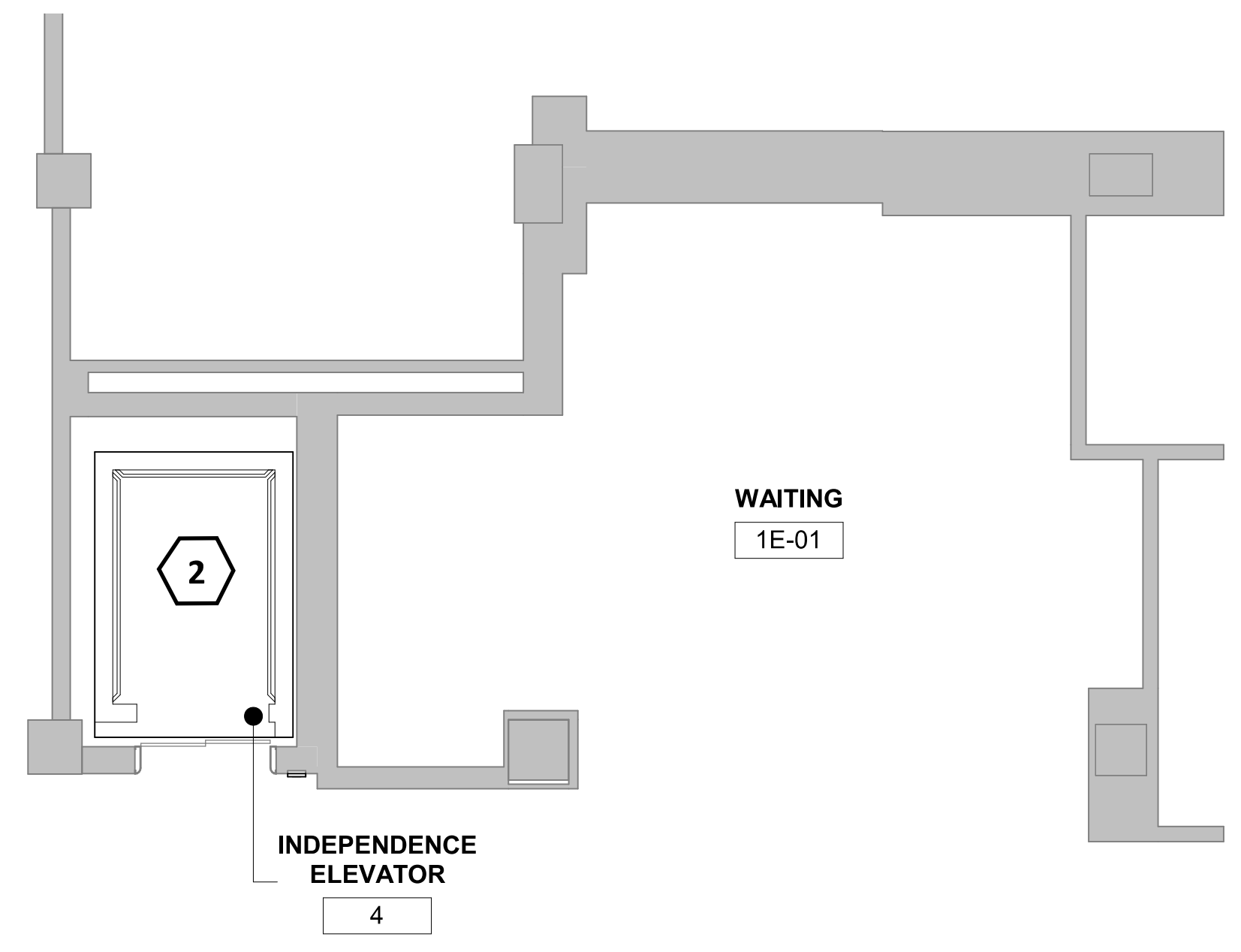
1 FLOOR PLAN - LIBERTY 1,2,3 - TYPICAL  
1/4" = 1'-0"



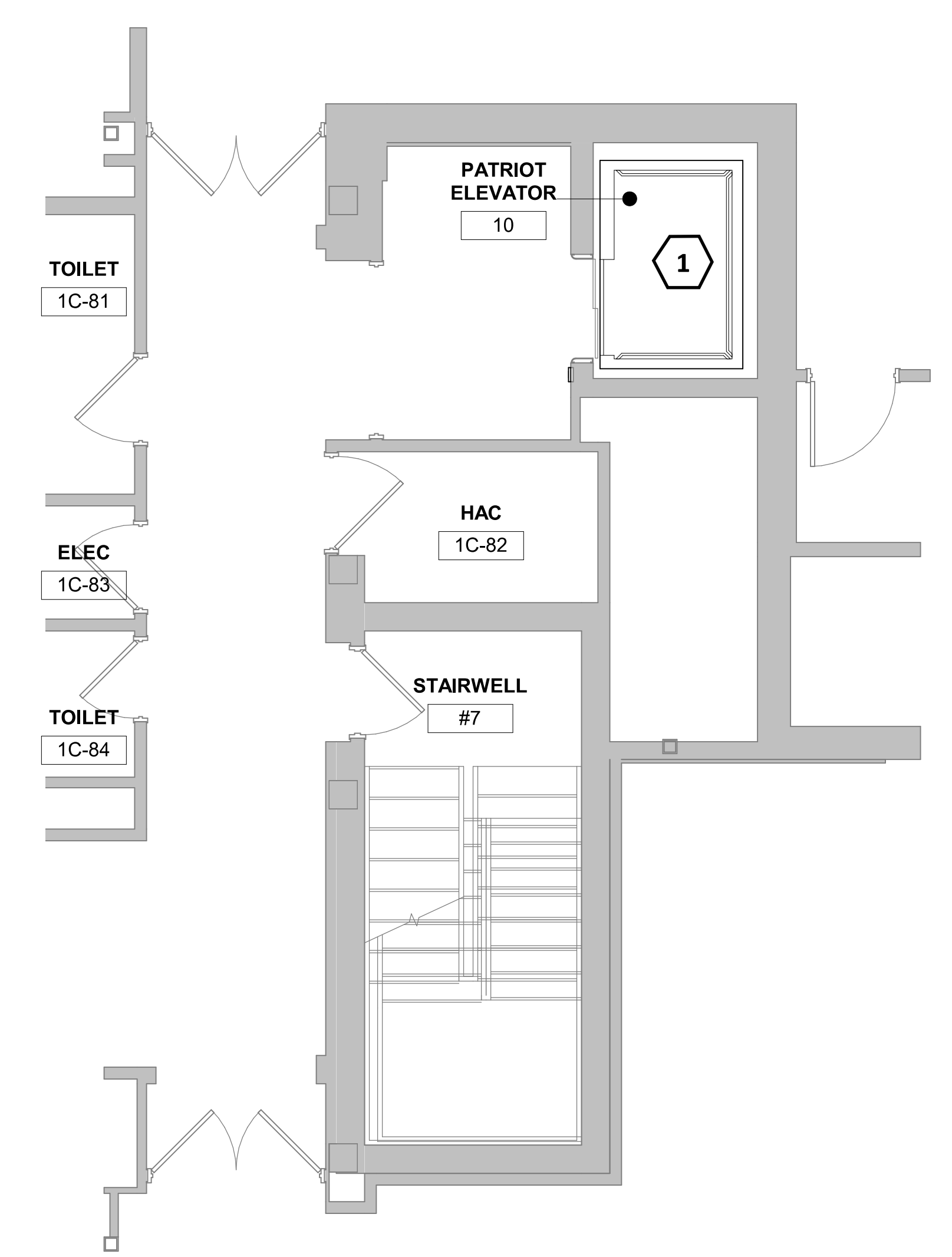
4 FLOOR PLAN - ELEVATOR 6 - TYPICAL  
1/4" = 1'-0"



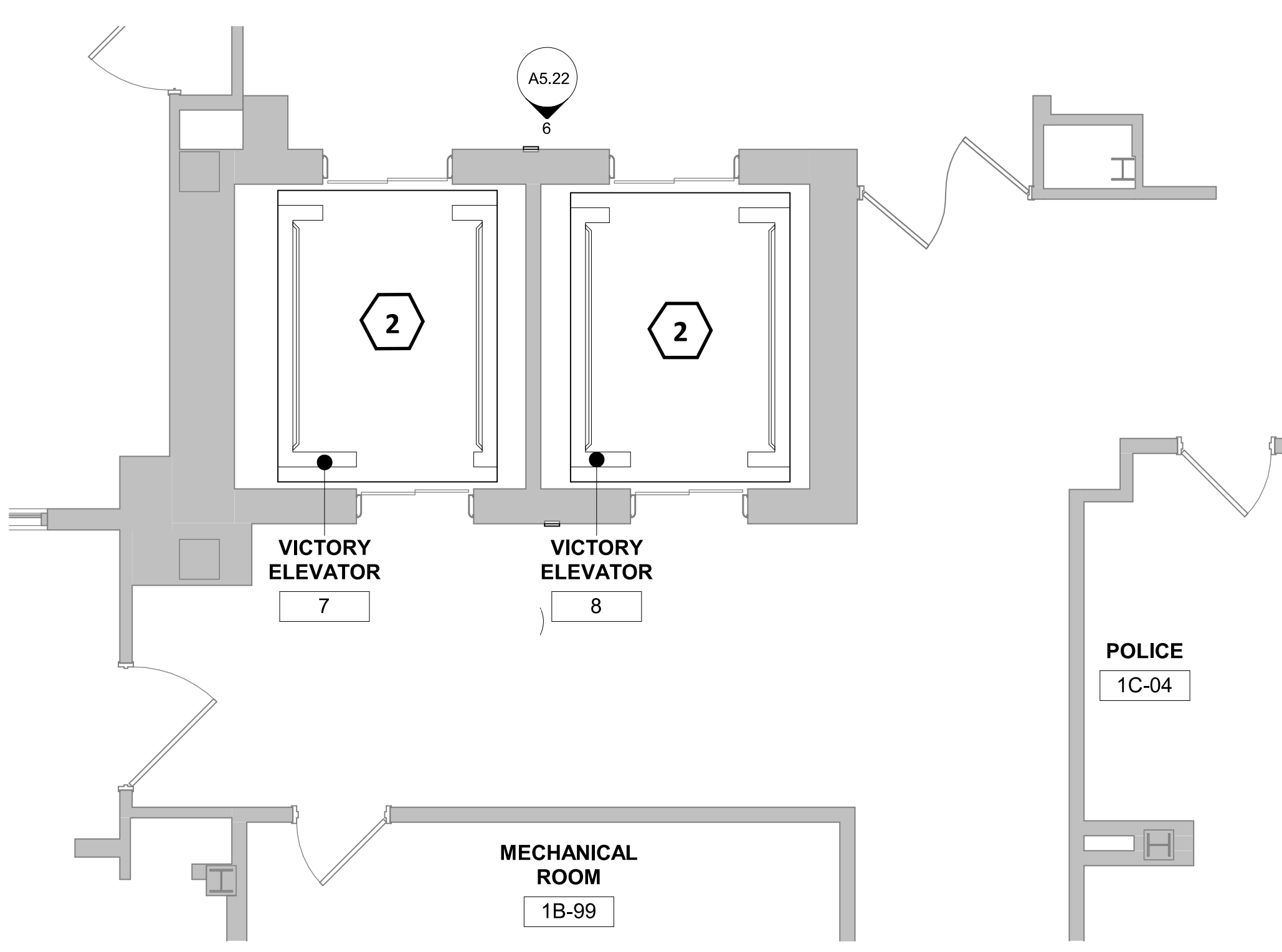
8 FLOOR PLAN - ELEVATOR 12 - TYPICAL  
1/4" = 1'-0"



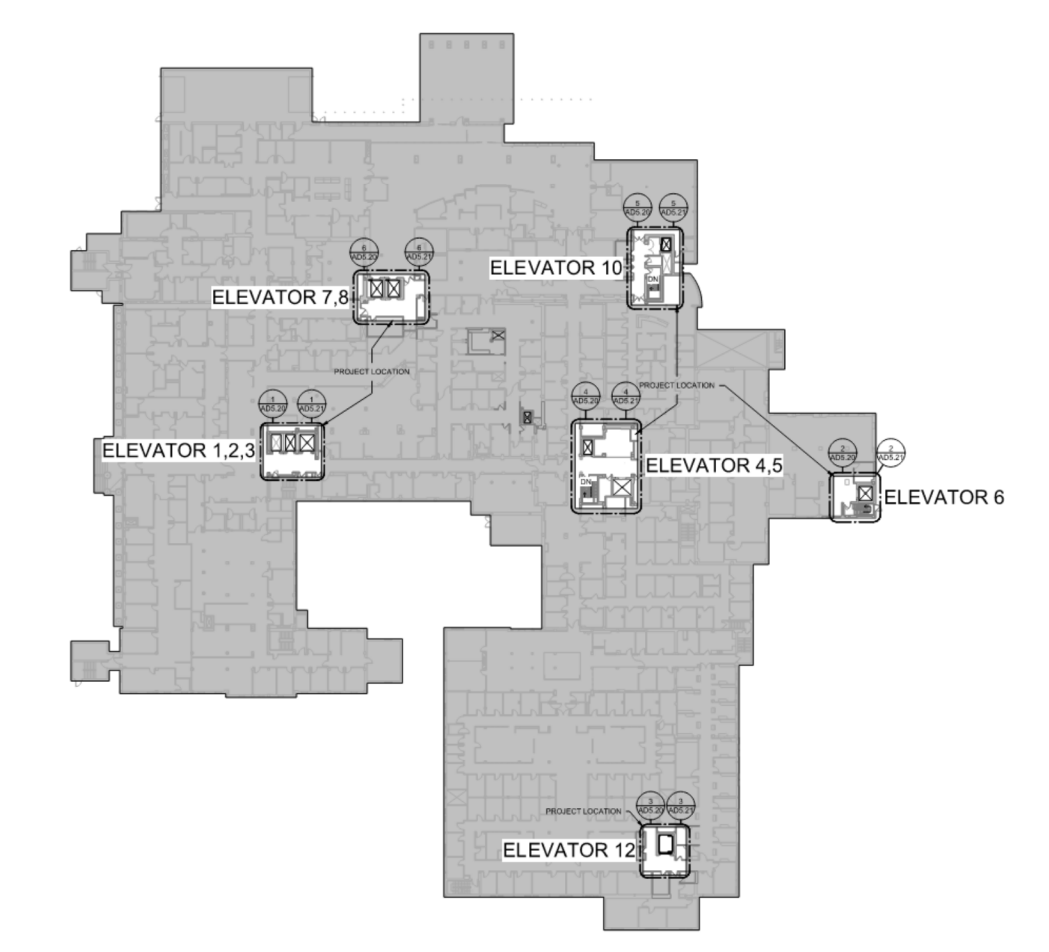
5 FLOOR PLAN - INDEPENDENCE 4,5 - TYPICAL  
1/4" = 1'-0"



6 FLOOR PLAN - PATRIOT ELEVATOR 10 - TYPICAL  
1/4" = 1'-0"



7 FLOOR PLAN - VICTORY ELEVATOR 7,8 - TYPICAL  
1/4" = 1'-0"



KEYPLAN

### CONSULTANTS:

**SUMMIT**  
FIRE PROTECTION

SUMMIT FIRE CONSULTING  
575 MINNEHAHA AVE WEST  
ST. PAUL, MINNESOTA 55103  
(612) 387-7050



### ARCHITECT/ENGINEERS

**FOURFRONT**  
DESIGN INC.

FOURFRONT DESIGN, INC.  
517 7TH STREET  
RAPID CITY, SOUTH DAKOTA 57701  
PH: (605) 342-9470  
FAX: (605) 342-2377  
WWW.FOURFRONTDESIGN.COM

Drawing Title  
**FIRE ALARM - DEMO 1**

Approved: Project Director  
**Owner**

Project Title  
**REFURBISH ELEVATORS AND REPLACE CONTROLS**

Location  
**2101 ELM STREET  
FARGO, ND 58102**

Date  
12.20.22

Project Number  
437-22-101

Building Number

Drawing Number  
**FAD5.20**

Office of  
Construction  
and Facilities  
Management



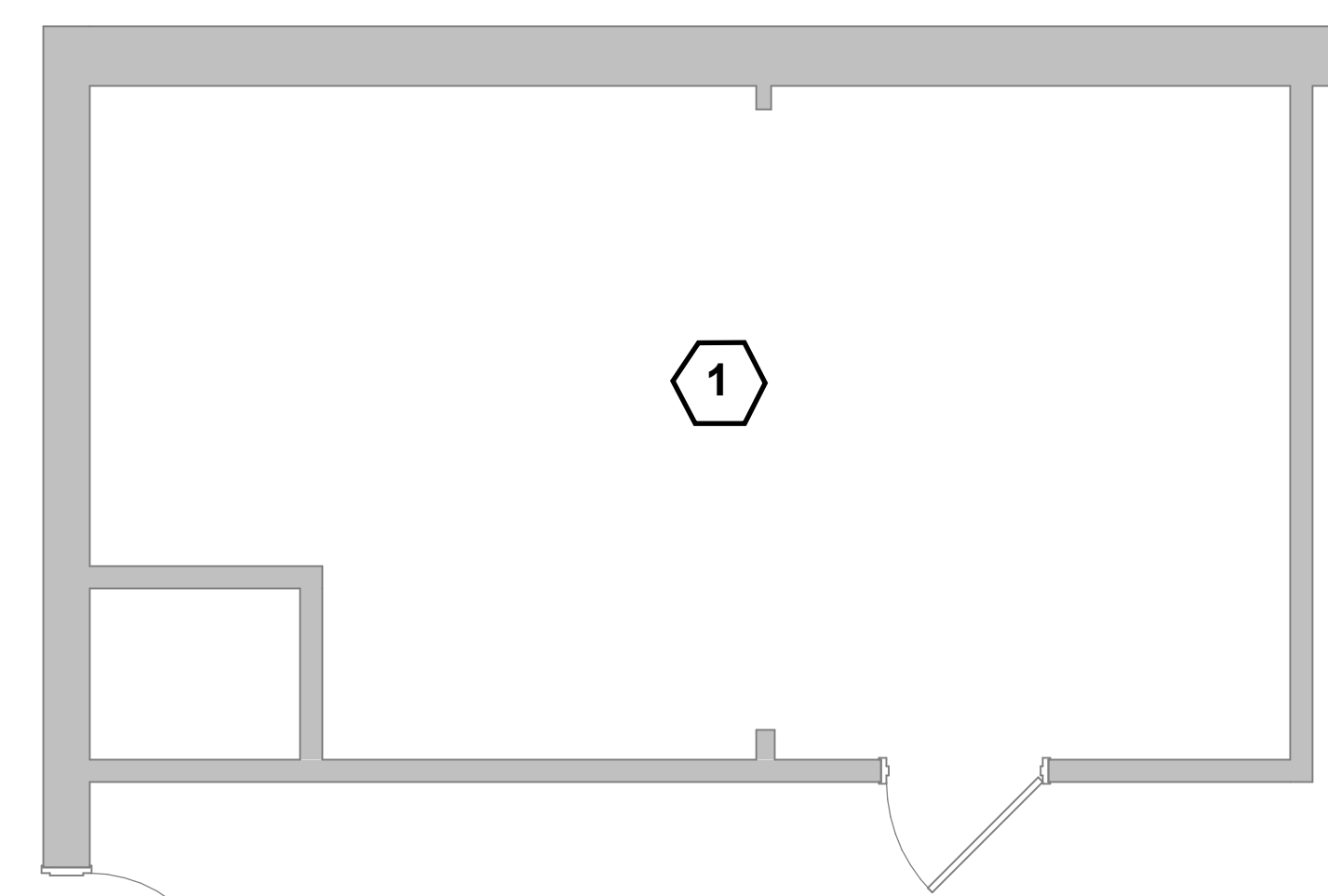
one and one half inches = one foot  
three quarters inch = one foot  
one half inch = one foot  
three eighths inch = one foot  
one quarter inch = one foot  
one eighth inch = one foot

# GENERAL NOTES

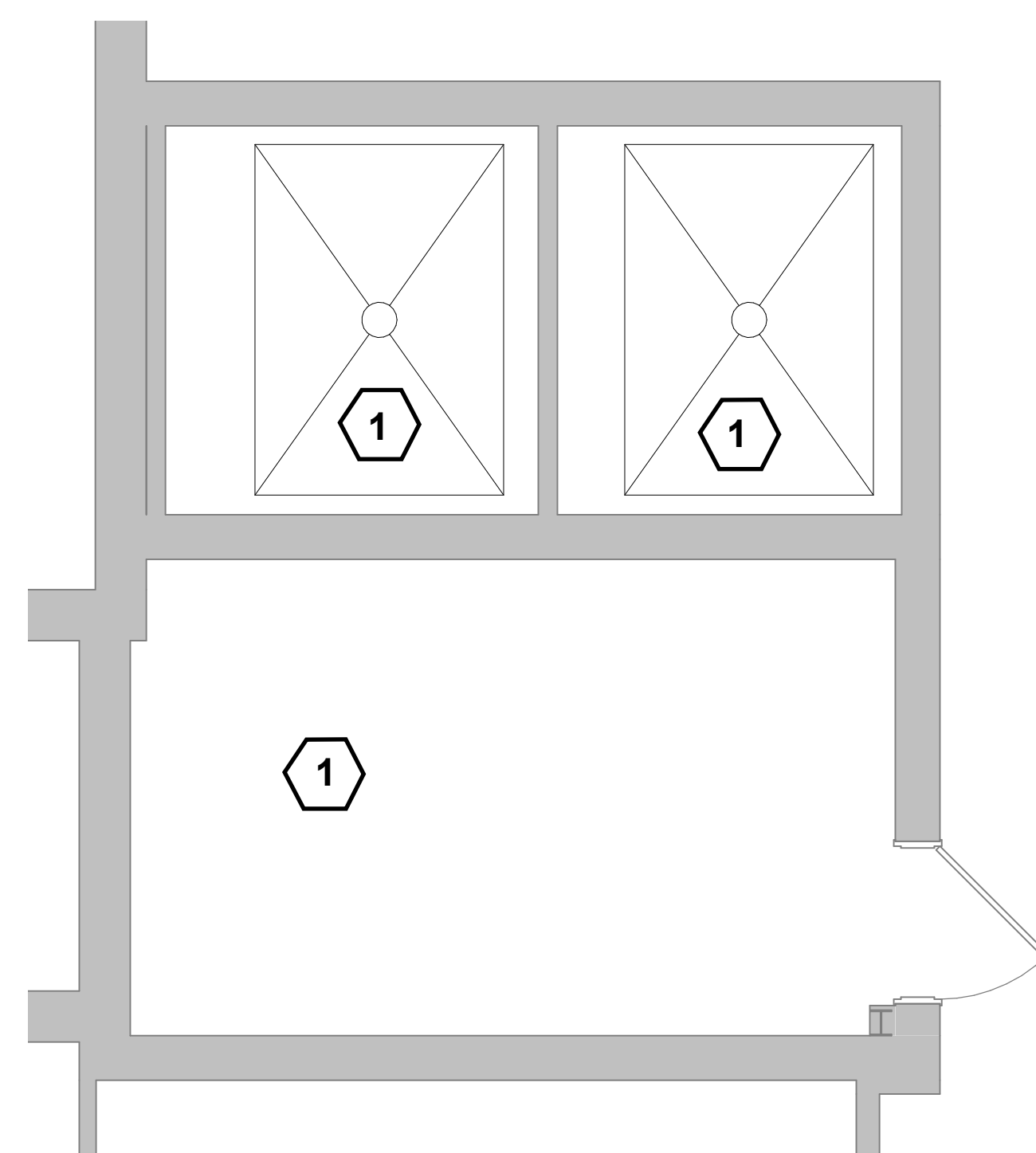
1. REMOVE EXISTING DEVICES AT TOP OF ELEVATOR SHAFT/PENTHOUSE.
2. MODIFY PROGRAMMING AS NOTED FOR MODIFICATIONS

# KEYNOTES #

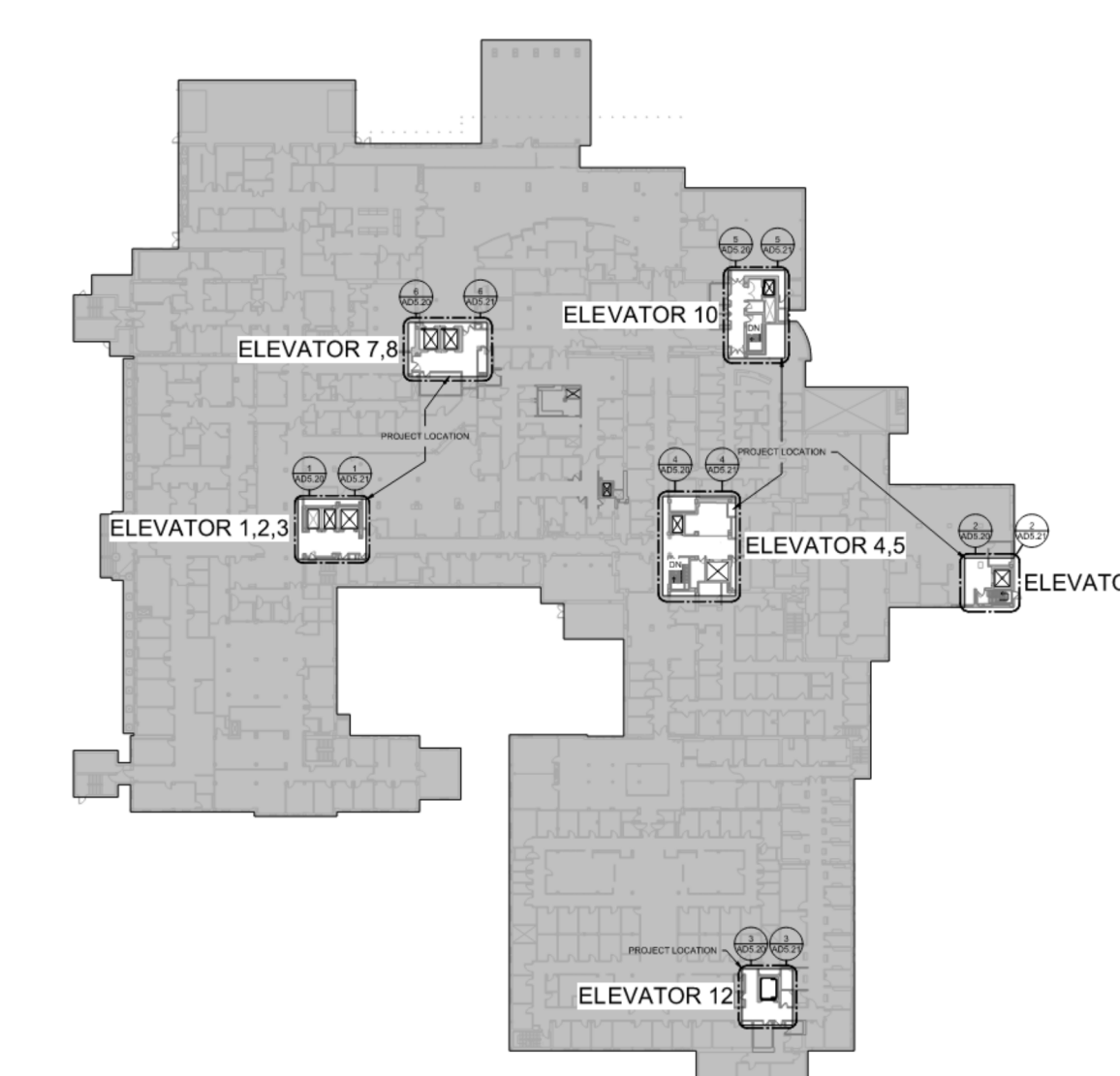
- 1 REMOVE EXISTING HEAT AND SMOKE DETECTOR AT TOP OF SHAFT/MACHINE ROOM WHERE PROVIDED. REMOVE PROGRAMMING FOR SHUNT TRIP FROM FIRE ALARM SEQUENCE. ONE DETECTOR PER SHAFT.



1 FLOOR PLAN - LIBERTY 1,2,3 PENTHOUSE - TYPICAL  
1/4" = 1'-0"



2 FLOOR PLAN - VICTORY ELEVATOR 7,8 PENTHOUSE - TYPICAL  
1/4" = 1'-0"

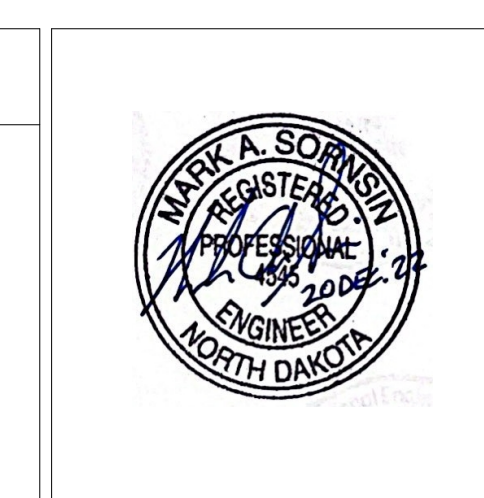



KEYPLAN

one eighth inch = one foot  
 one quarter inch = one foot  
 three eighths inch = one foot  
 one half inch = one foot  
 three quarters inch = one foot  
 one inch = one foot  
 one and one half inches = one foot  
 one and three quarters inches = one foot  
 two inches = one foot

Revisions:	Date

CONSULTANTS:	
 SUMMIT FIRE CONSULTING 575 MINNEHAHA AVE WEST ST. PAUL, MINNESOTA 55103 (612) 387-7050	



ARCHITECT/ENGINEERS	
 FOURFRONT DESIGN, INC. 517 7TH STREET RAPID CITY, SOUTH DAKOTA 57701 PH: (605) 342-9470 FAX: (605) 342-2377 WWW.FOURFRONTDESIGN.COM	

Drawing Title	
FIRE ALARM - DEMO 2	
Approved: Project Director	
Owner	

Project Title		
REFURBISH ELEVATORS AND REPLACE CONTROLS		
Location 2101 ELM STREET FARGO, ND 58102		
Date	Checked	Drawn
12.20.22	MAS	NB

Project Number	
437-22-101	
Building Number	
Drawing Number	
FAD5.21	
Dwg.	of

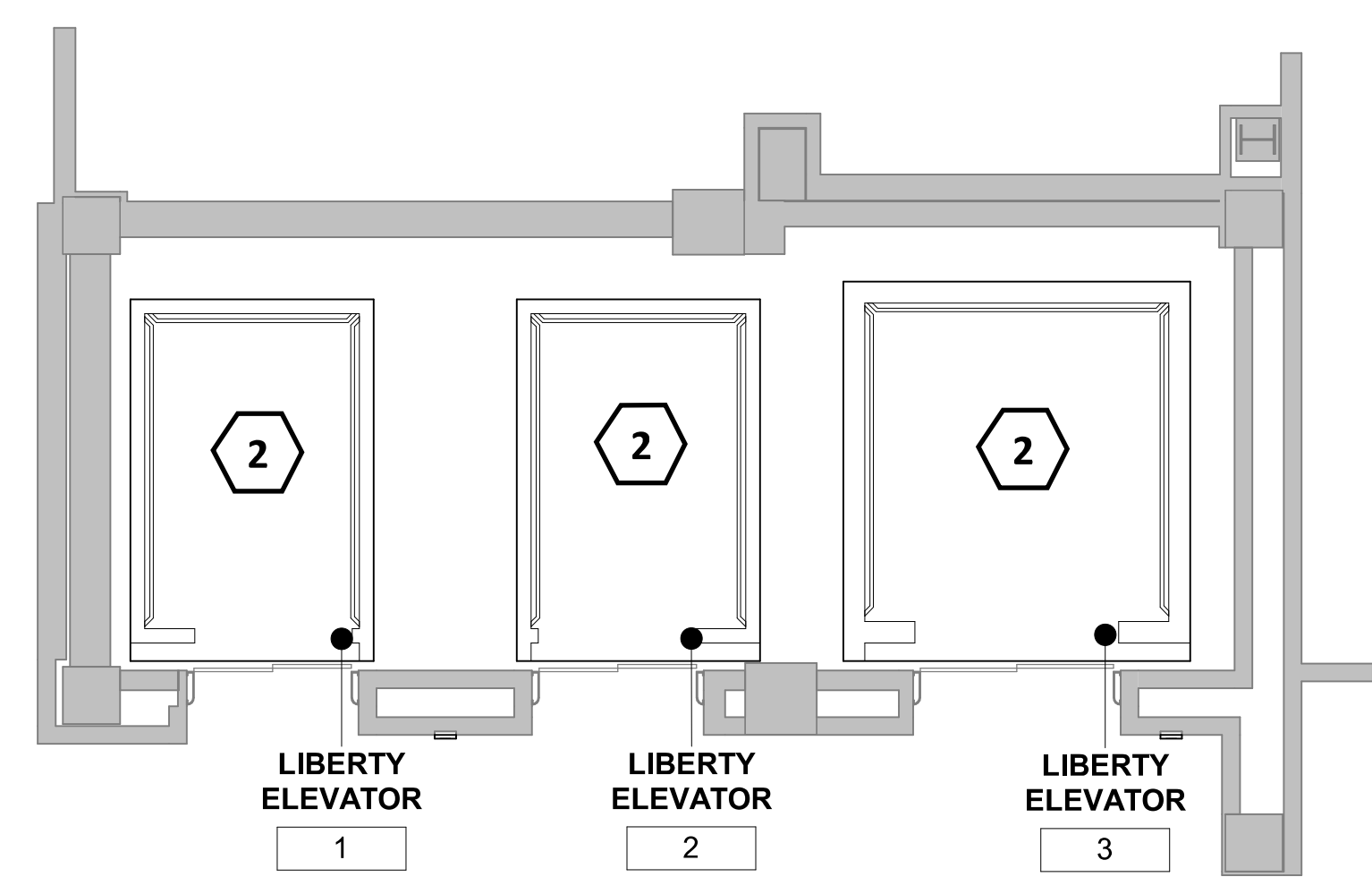
Office of Construction and Facilities Management  
 Department of Veterans Affairs

### GENERAL NOTES

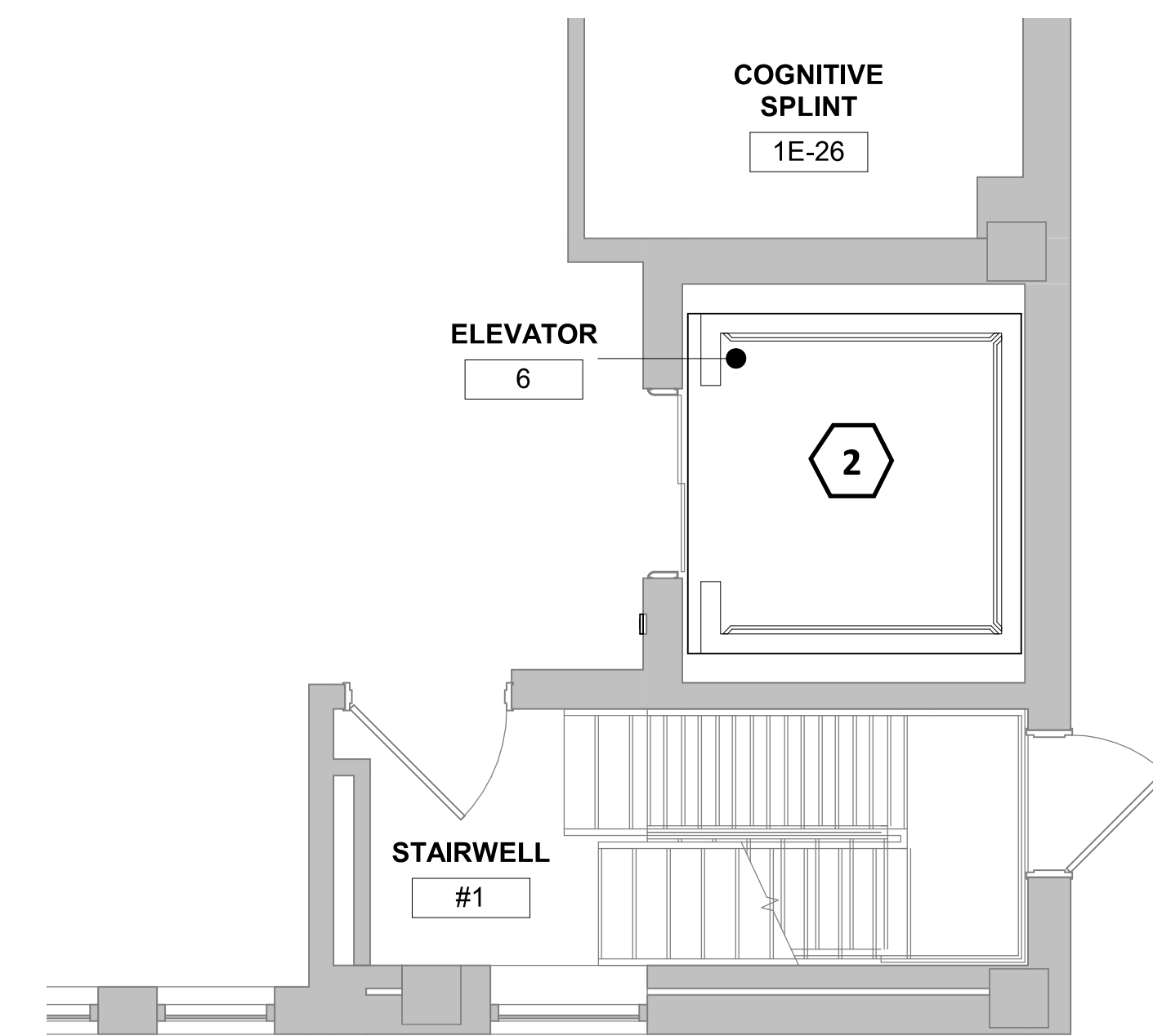
1. CONNECT NEW HEAT DETECTOR TO EXISTING WIRING AND ZONE.
2. COORDINATE ALL WORK AND SHUT DOWNS WITH THE GENERAL CONTRACTOR AND OWNER'S REPRESENTATIVE
3. SMOKE DETECTION IN EXISTING LOBBIES TO REMAIN AS IS.

### KEYNOTES #

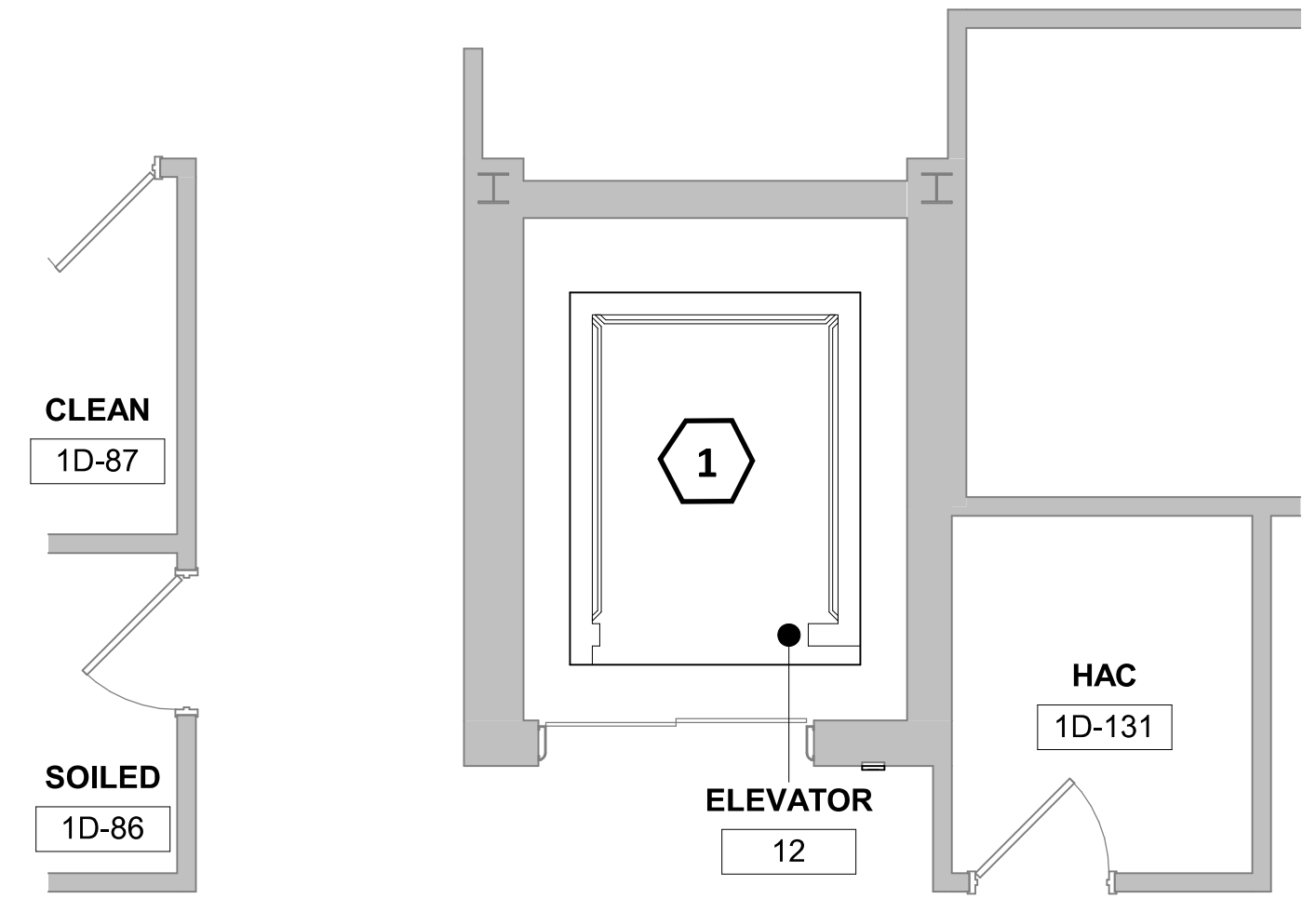
- 1 PROVIDE NEW HEAT + SMOKE DETECTOR IN PIT AND MACHINE ROOM CONNECTED TO EXISTING WIRING. ONE DETECTOR PER PIT/MACHINE ROOM.
- 2 NO HEAT + SMOKE DETECTION REQUIRED AT TRACTION ELEVATOR SHAFT



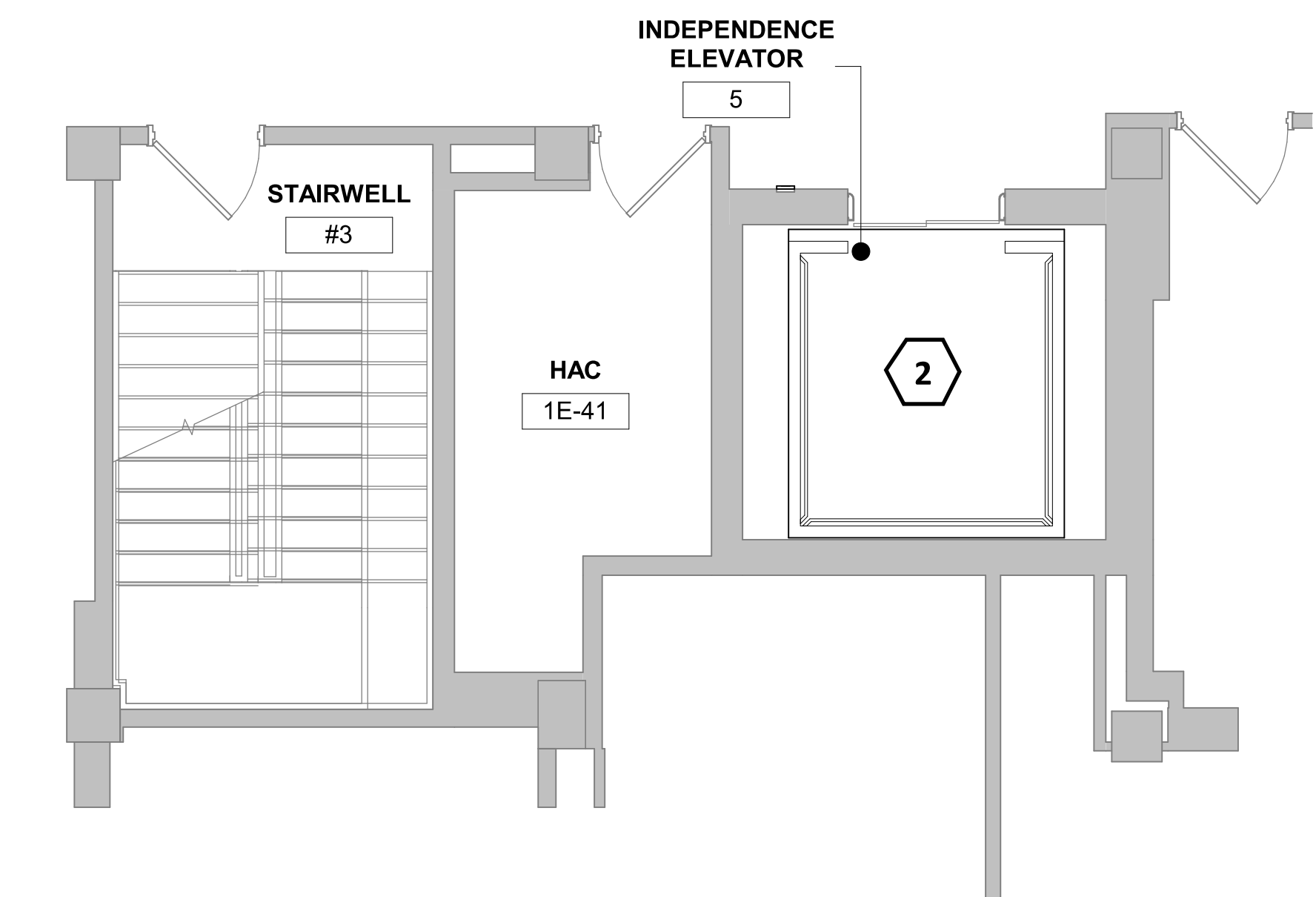
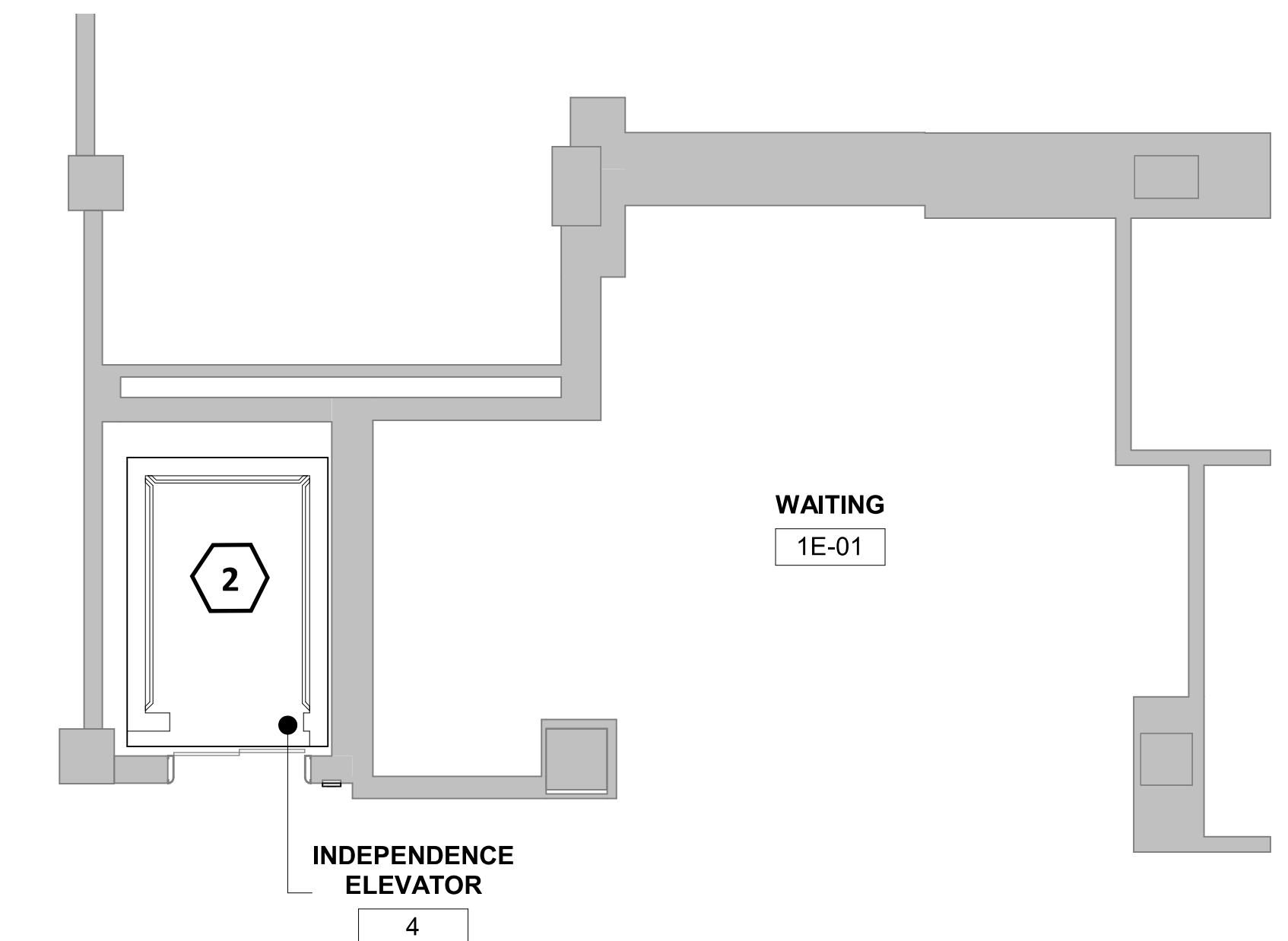
1 FLOOR PLAN - LIBERTY 1,2,3 - TYPICAL  
1/4" = 1'-0"



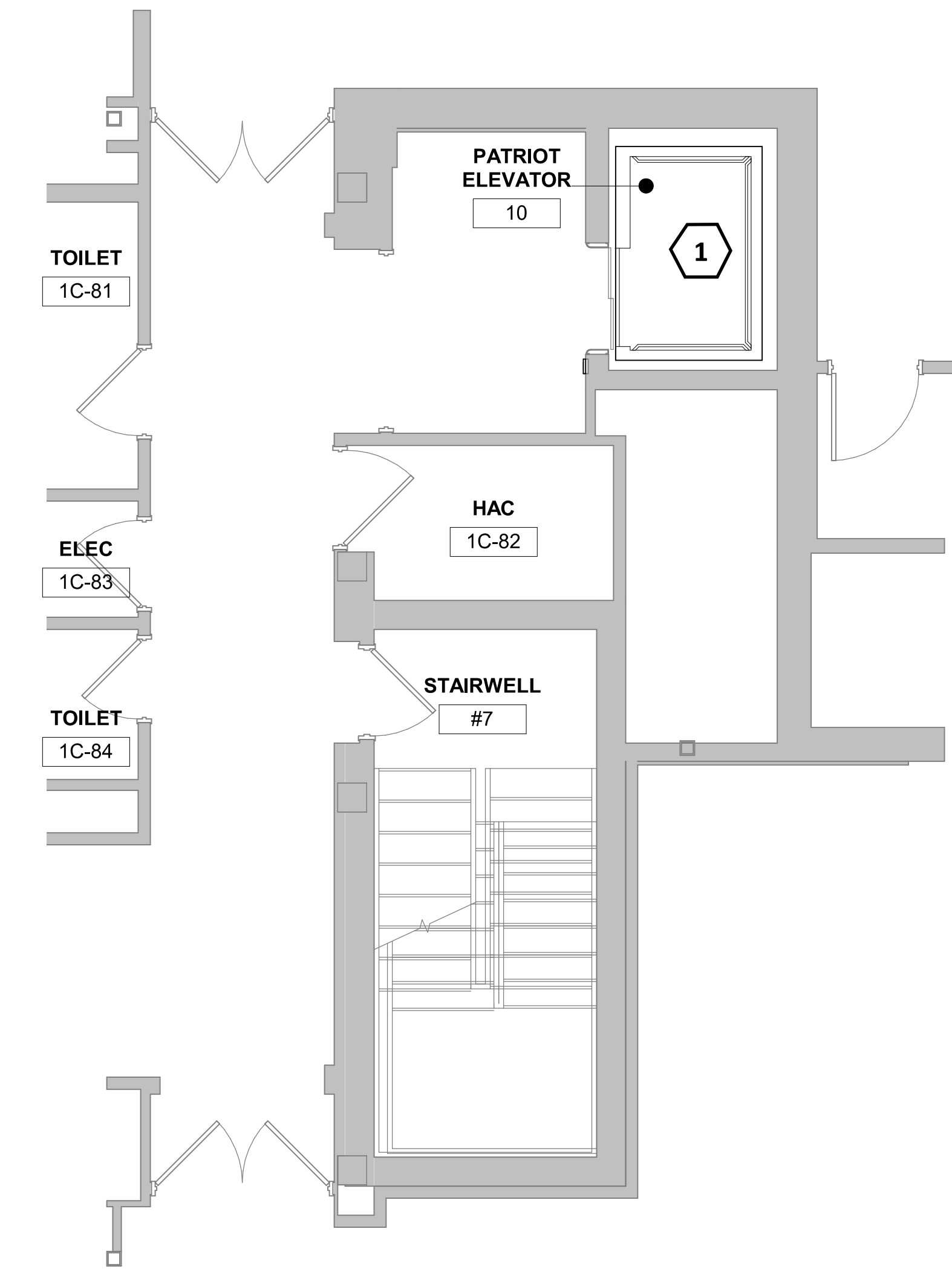
4 FLOOR PLAN - ELEVATOR 6 - TYPICAL  
1/4" = 1'-0"



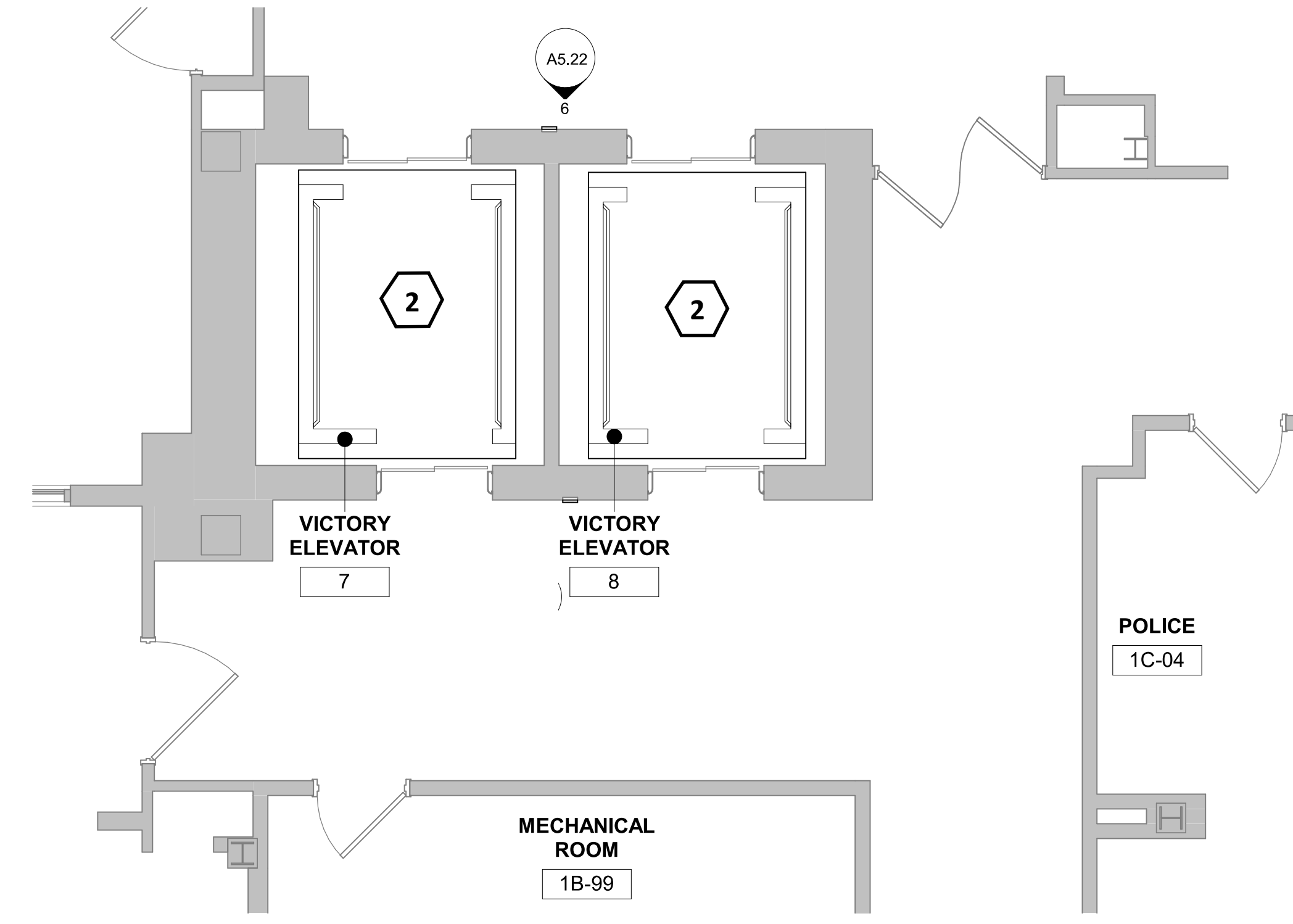
8 FLOOR PLAN - ELEVATOR 12 - TYPICAL  
1/4" = 1'-0"



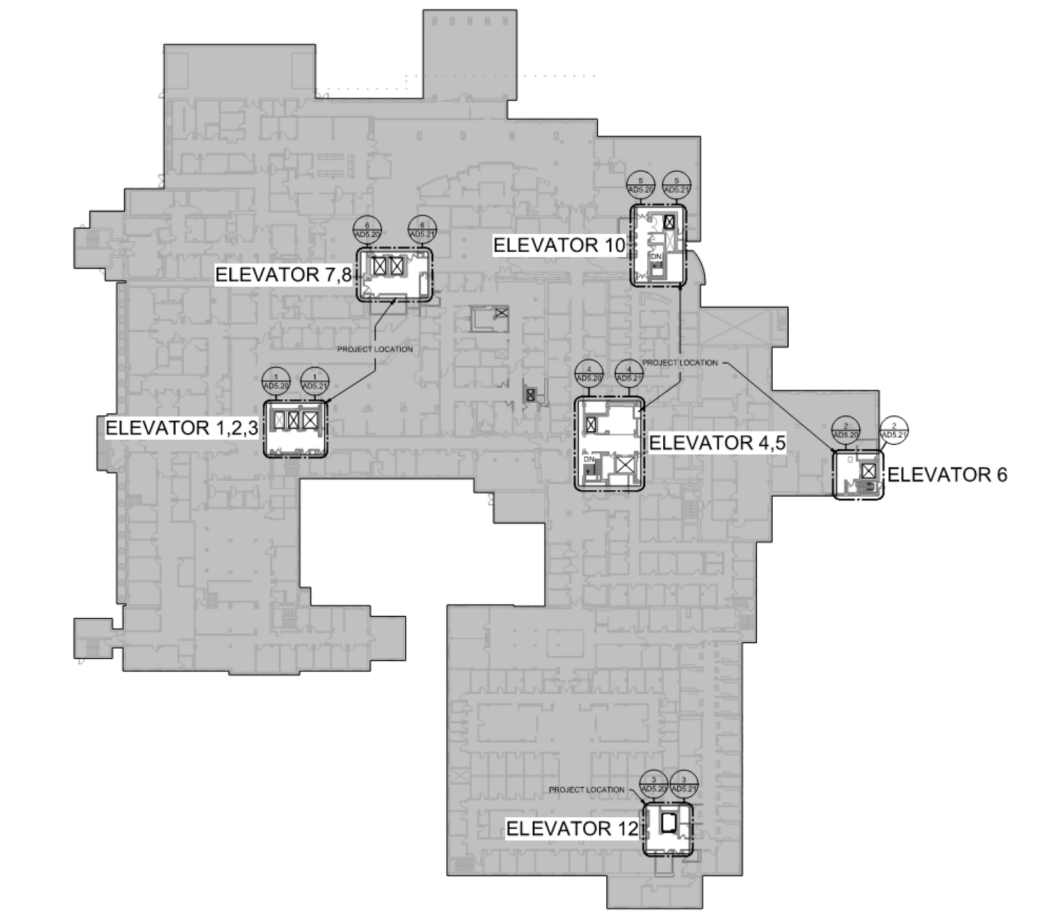
5 FLOOR PLAN - INDEPENDENCE 4,5 - TYPICAL  
1/4" = 1'-0"



6 FLOOR PLAN - PATRIOT ELEVATOR 10 - TYPICAL  
1/4" = 1'-0"



7 FLOOR PLAN - VICTORY ELEVATOR 7,8 - TYPICAL  
1/4" = 1'-0"



KEYPLAN

Revisions:	Date

CONSULTANTS:

**SUMMIT FIRE PROTECTION**  
SUMMIT FIRE CONSULTING  
575 MINNEHAHA AVE WEST  
ST. PAUL, MINNESOTA 55103  
(612) 387-7050



ARCHITECT/ENGINEERS

**FOURFRONT DESIGN, INC.**  
517 7TH STREET  
RAPID CITY, SOUTH DAKOTA 57701  
PH: (605) 342-9470  
FAX: (605) 342-2377  
WWW.FOURFRONTDESIGN.COM

Drawing Title  
**FIRE ALARM 1**

Approved: Project Director  
Owner

Project Title  
**REFURBISH ELEVATORS AND REPLACE CONTROLS**

Location  
2101 ELM STREET  
FARGO, ND 58102

Date  
12.20.22

Checked  
MAS

Drawn  
NB

Project Number  
437-22-101

Building Number

Drawing Number  
**FA5.20**

Dwg. of

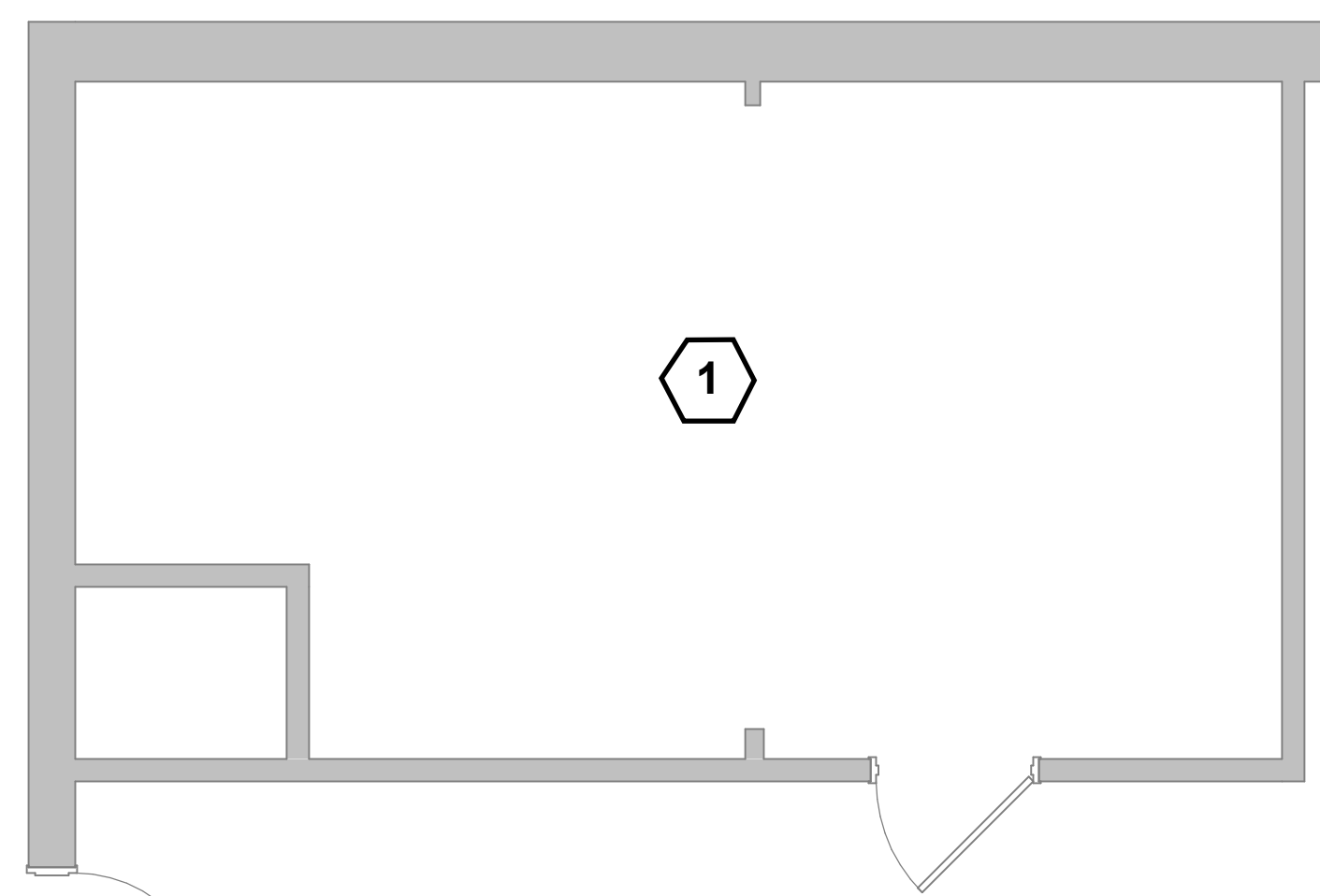


# GENERAL NOTES

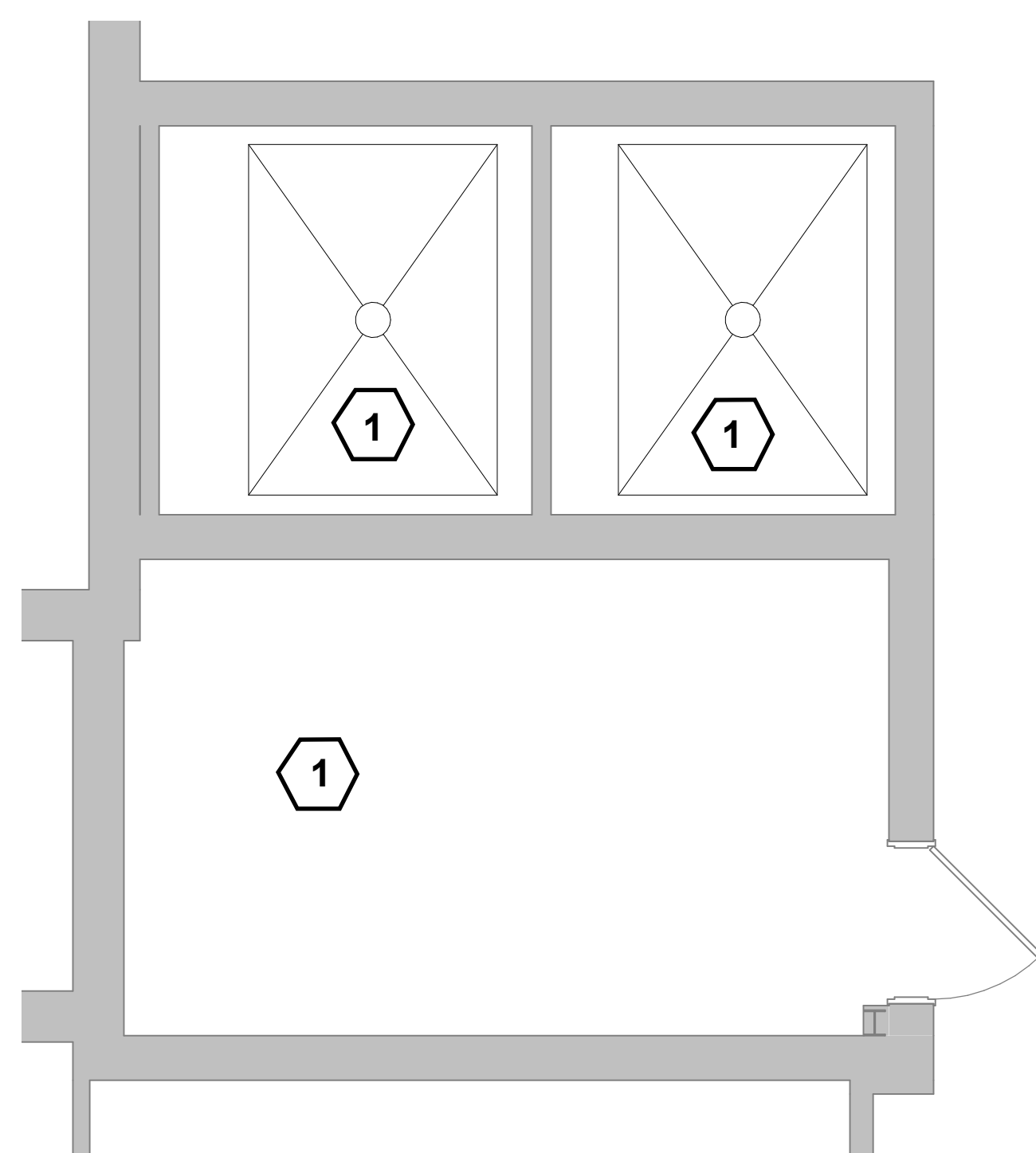
1. NO WORK IN PENTHOUSE OR TOP OF ELEVATOR SHAFT.

## KEYNOTES #

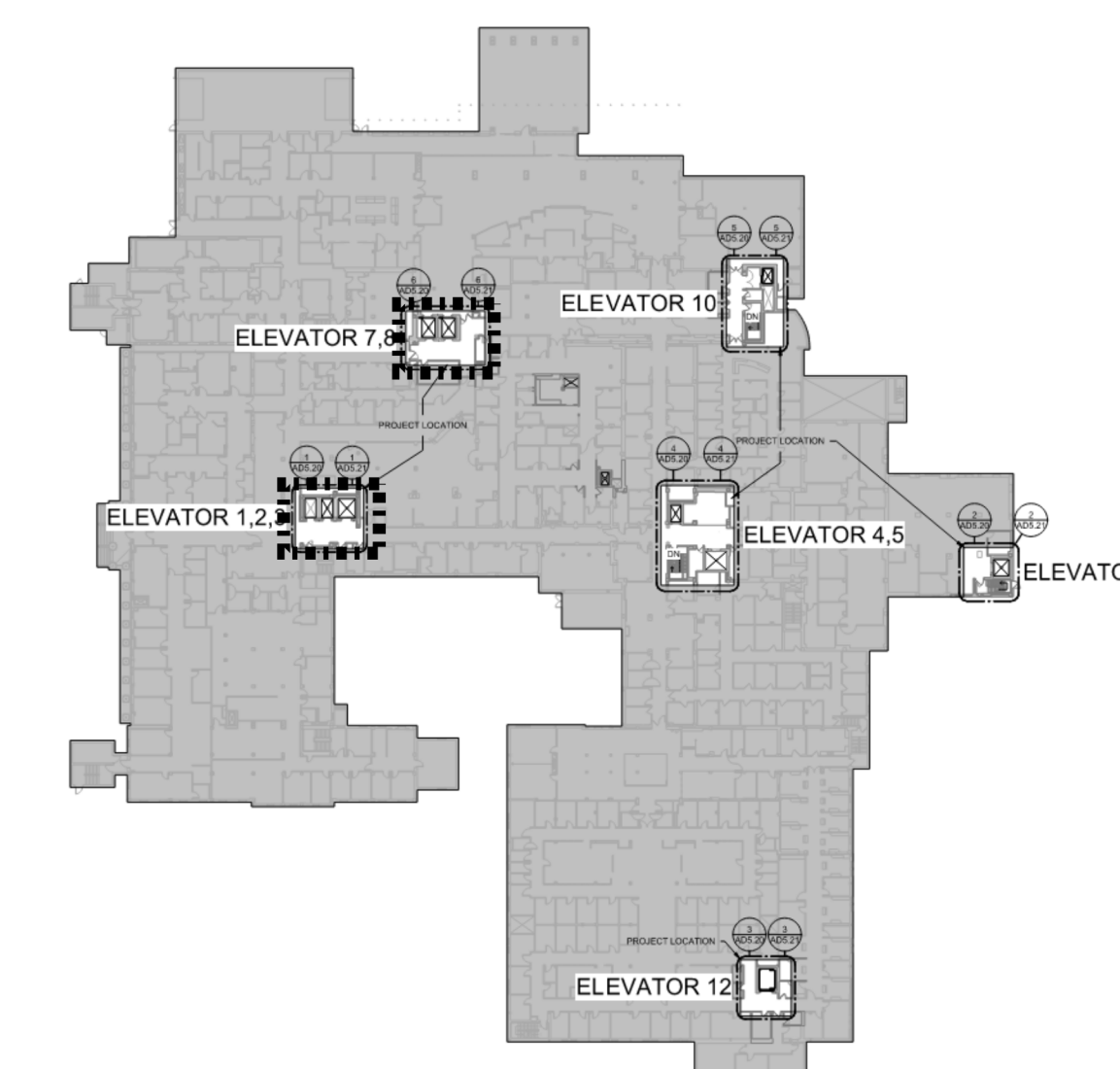
**1** NO HEAT + SMOKE DETECTION REQUIRED AT TRACTION ELEVATOR SHAFT



1 FLOOR PLAN - LIBERTY 1,2,3 PENTHOUSE - TYPICAL  
1/4" = 1'-0"



2 FLOOR PLAN - VICTORY ELEVATOR 7,8 PENTHOUSE - TYPICAL  
1/4" = 1'-0"



## KEYPLAN

### CONSULTANTS:

**SUMMIT**  
FIRE PROTECTION  
SUMMIT FIRE CONSULTING  
575 MINNEHAHA AVE WEST  
ST. PAUL, MINNESOTA 55103  
(612) 387-7050



### ARCHITECT/ENGINEERS

**FOURFRONT**  
DESIGN INC.  
FOURFRONT DESIGN, INC.  
517 7TH STREET  
RAPID CITY, SOUTH DAKOTA 57701  
PH: (605) 342-9470  
FAX: (605) 342-2377  
WWW.FOURFRONTDESIGN.COM

Drawing Title

FIRE ALARM 2

Approved: Project Director  
Owner

Project Title  
REFURBISH ELEVATORS AND  
REPLACE CONTROLS

Location 2101 ELM STREET  
FARGO, ND 58102

Date 12.20.22

Project Number  
437-22-101

Building Number

Drawing Number  
FA5.21

Office of  
Construction  
and Facilities  
Management

