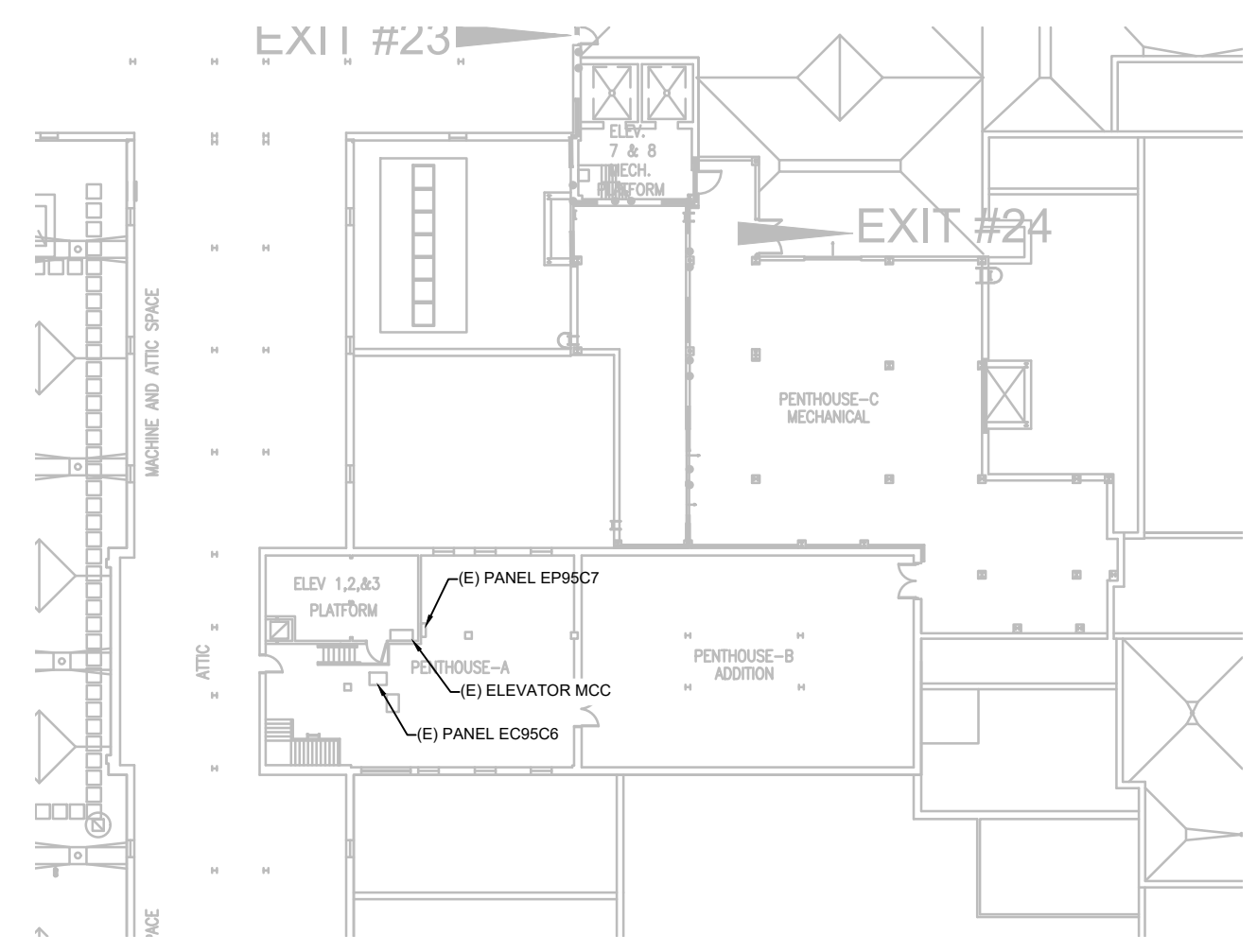


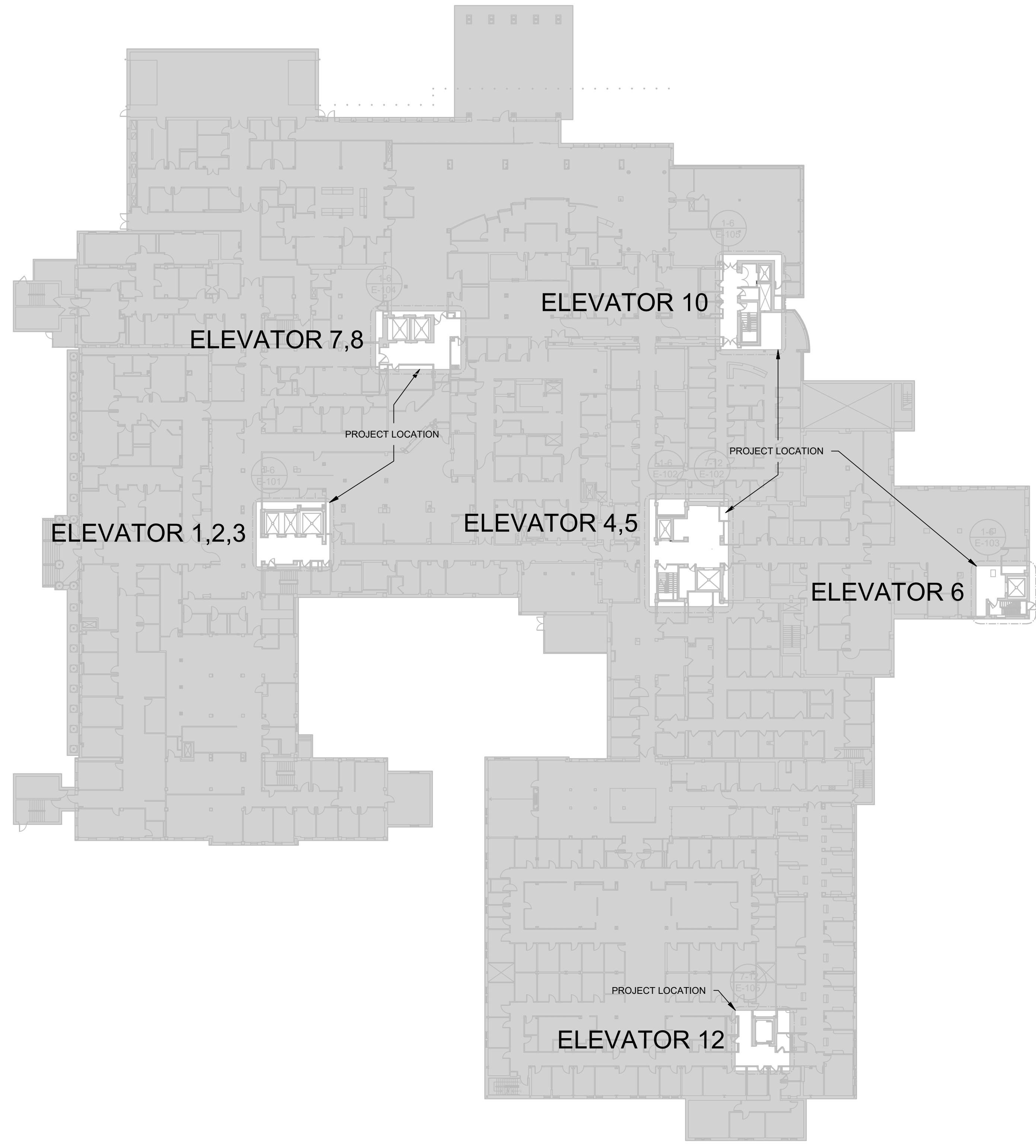
one eighth inch = one foot
 one quarter inch = one foot
 three eighths inch = one foot
 one half inch = one foot
 three quarters inch = one foot
 one inch = one foot
 one and one half inches = one foot
 two inches = one foot
 three inches = one foot
 four inches = one foot
 five inches = one foot
 six inches = one foot
 seven inches = one foot
 eight inches = one foot
 nine inches = one foot
 ten inches = one foot
 eleven inches = one foot
 twelve inches = one foot



1
E-100 LEVEL 5 ELECTRICAL PANEL LOCATION REFERENCE PLAN
 SCALE: 1/8" = 1'-0"



2
E-100 BASEMENT ELECTRICAL PANEL LOCATION REFERENCE PLAN
 SCALE: 1/32" = 1'-0"



3
E100 ELEVATOR LOCATION REFERENCE PLAN
 SCALE: 1/32" = 1'-0"

Revisions:	Date

CONSULTANTS:

SUMMIT FIRE PROTECTION
 SUMMIT FIRE CONSULTING
 575 MINNEHAHA AVE WEST
 ST. PAUL, MINNESOTA 55103
 (612) 387-7050



ARCHITECT/ENGINEERS:

FOURFRONT DESIGN INC.
 517 7th street
 rapid city sd 57701
 p 605.342.9470
 f 605.342.2377
 www.4front.biz

Drawing Title
 ELEVATOR & ELECTRICAL PANEL LOCATION REFERENCE PLANS

Approved: Project Director
 TODD DALZELL

Project Title
 REFURBISH FARGO ELEVATORS AND REPLACE CONTROLS

Location
 FARGO, NORTH DAKOTA

Date
 12/20/2022

Checked
 WW

Drawn
 JS

Project Number
 436-20-126

Building Number
 154

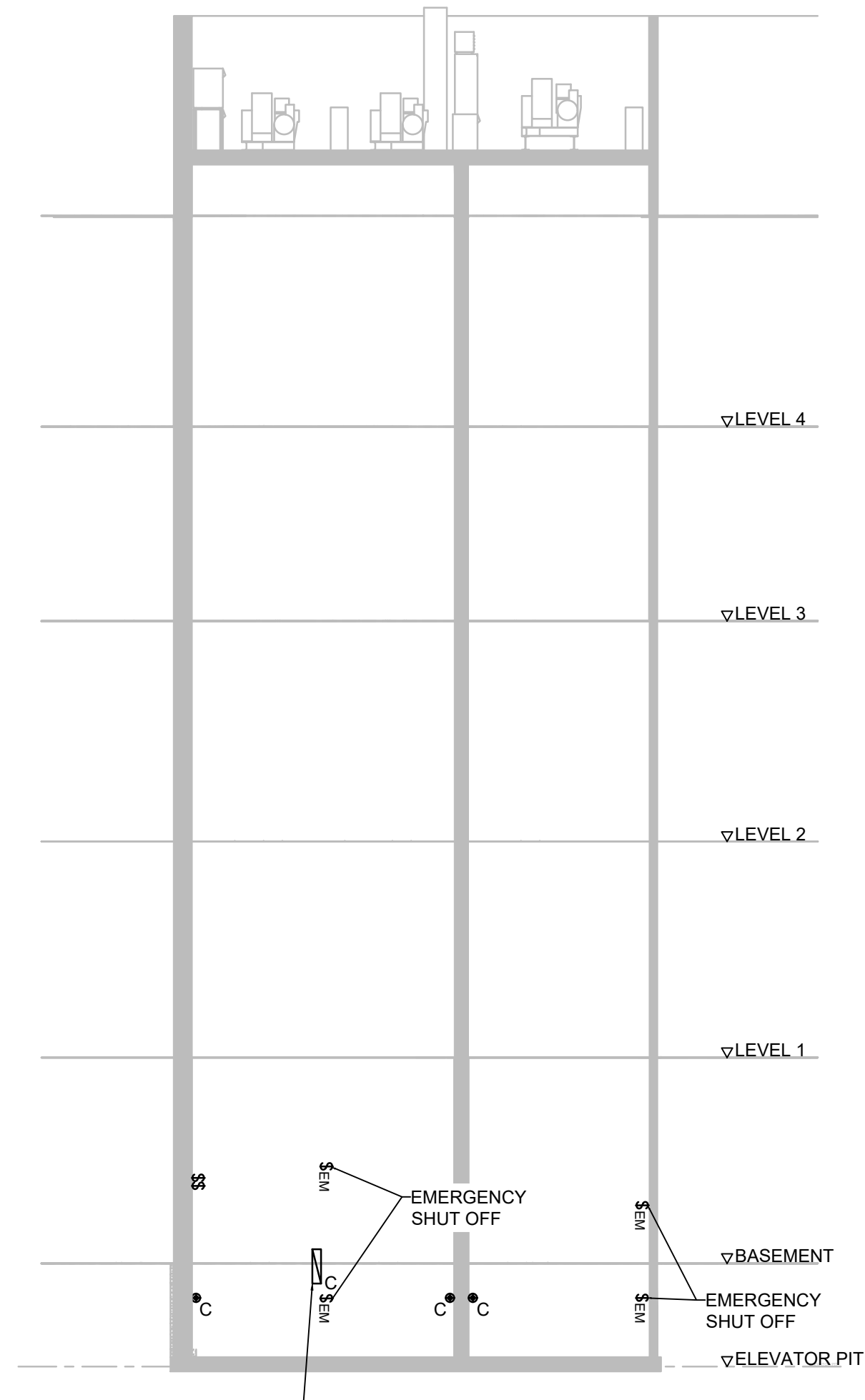
Drawing Number
 E-100

Dwg. 26 of 41

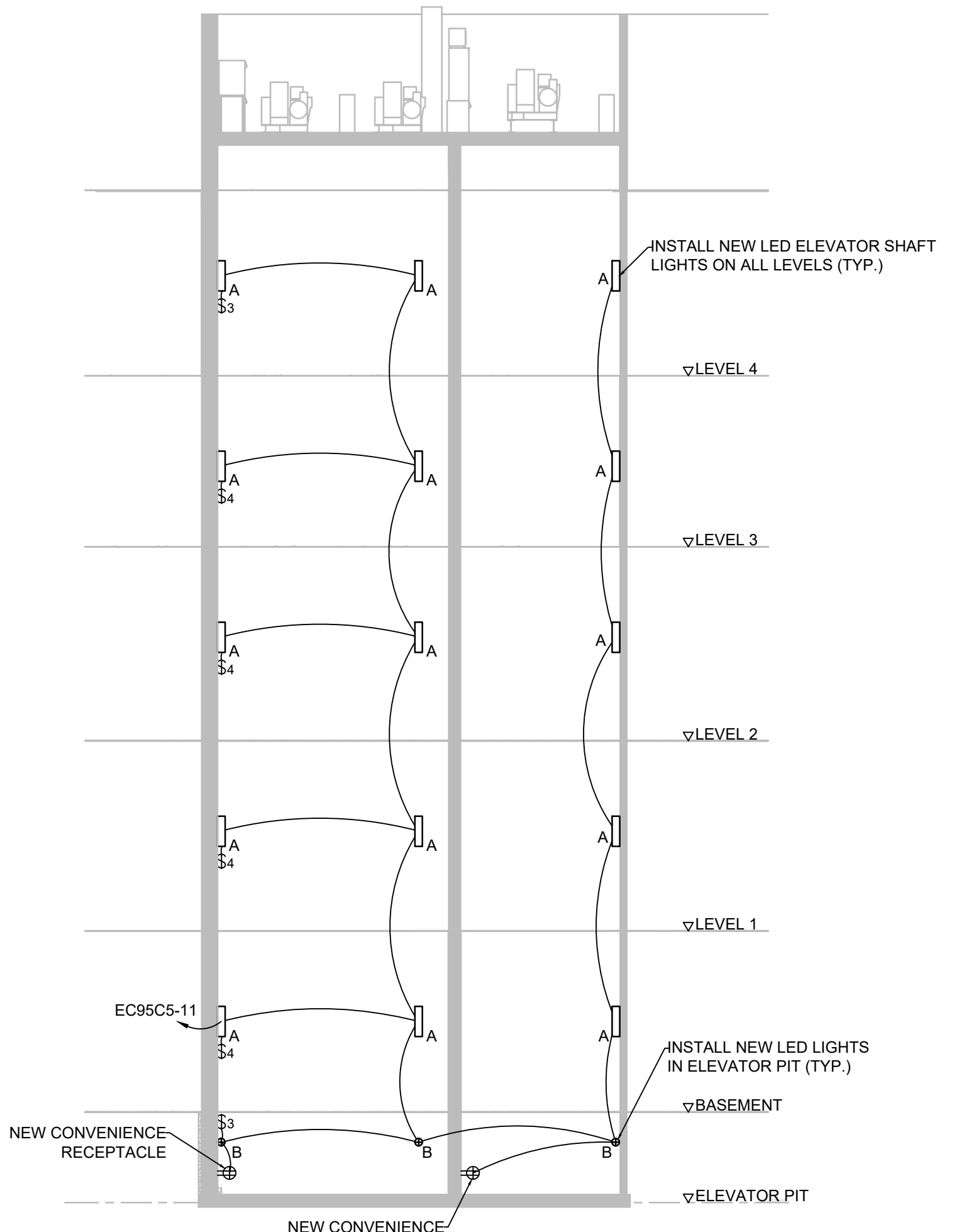
Office of Construction and Facilities Management

Department of Veterans Affairs

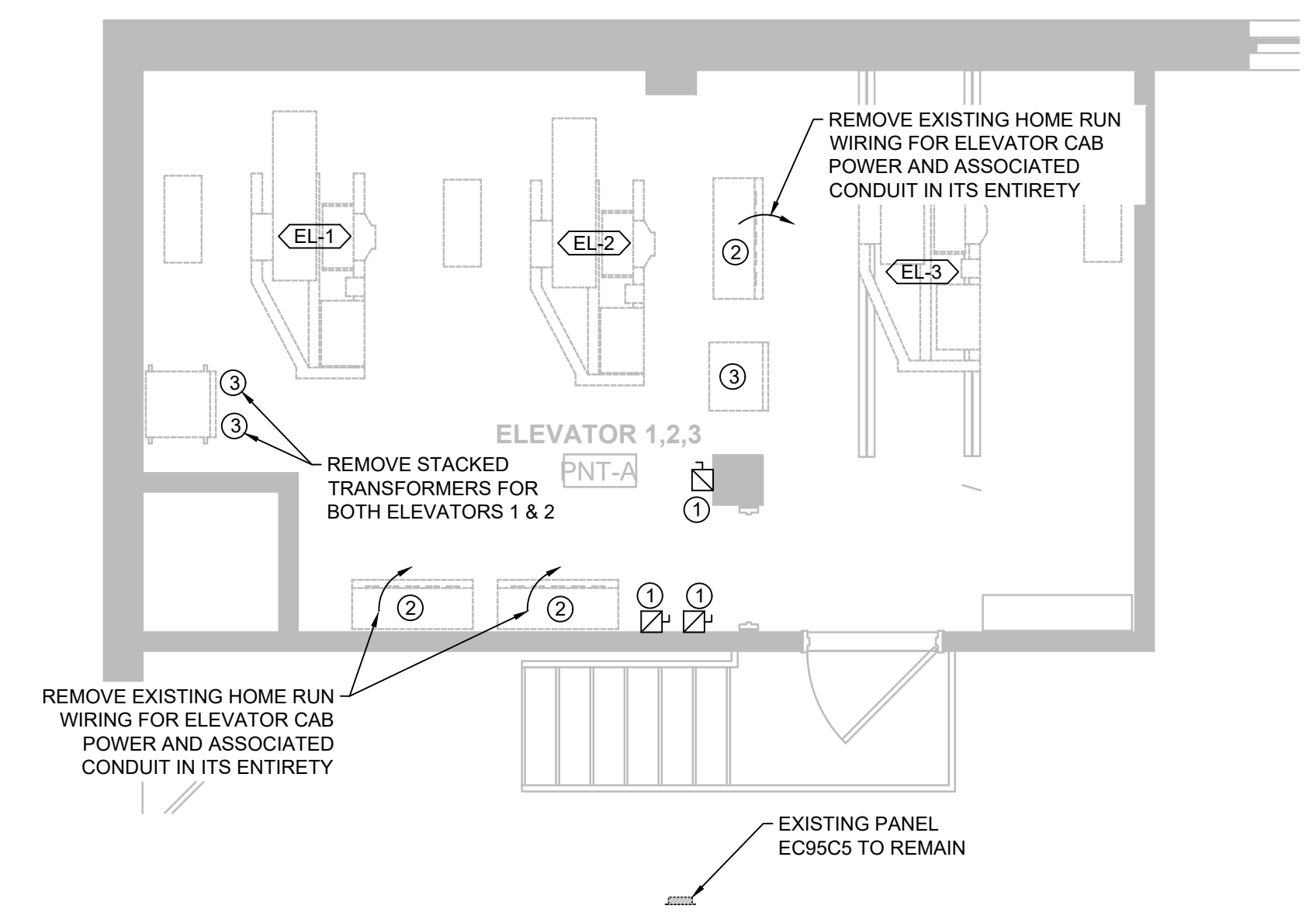
- KEYED ELECTRICAL NOTES**
- ① REMOVE AND DISPOSE OF EXISTING SHUNT TRIP DISCONNECT.
 - ② REMOVE AND DISPOSE OF EXISTING ELEVATOR CONTROLLER AND ASSOCIATED RACEWAY.
 - ③ REMOVE AND DISPOSE OF EXISTING ELECTRICAL ISOLATION TRANSFORMER.
 - ④ INSTALL NEW BUSSMANN MODEL PS-1-T48-R2-K-N1-B-F1-T COMBINATION SHUNT TRIP DISCONNECT PANEL WITH FIRE ALARM INTERLOCK RELAYS.
 - ⑤ INSTALL NEW VARIABLE FREQUENCY/VARIABLE DRIVE CONTROLLER. SEE SPECIFICATION.
 - ⑥ INSTALL NEW ELECTRICAL ISOLATION TRANSFORMER.



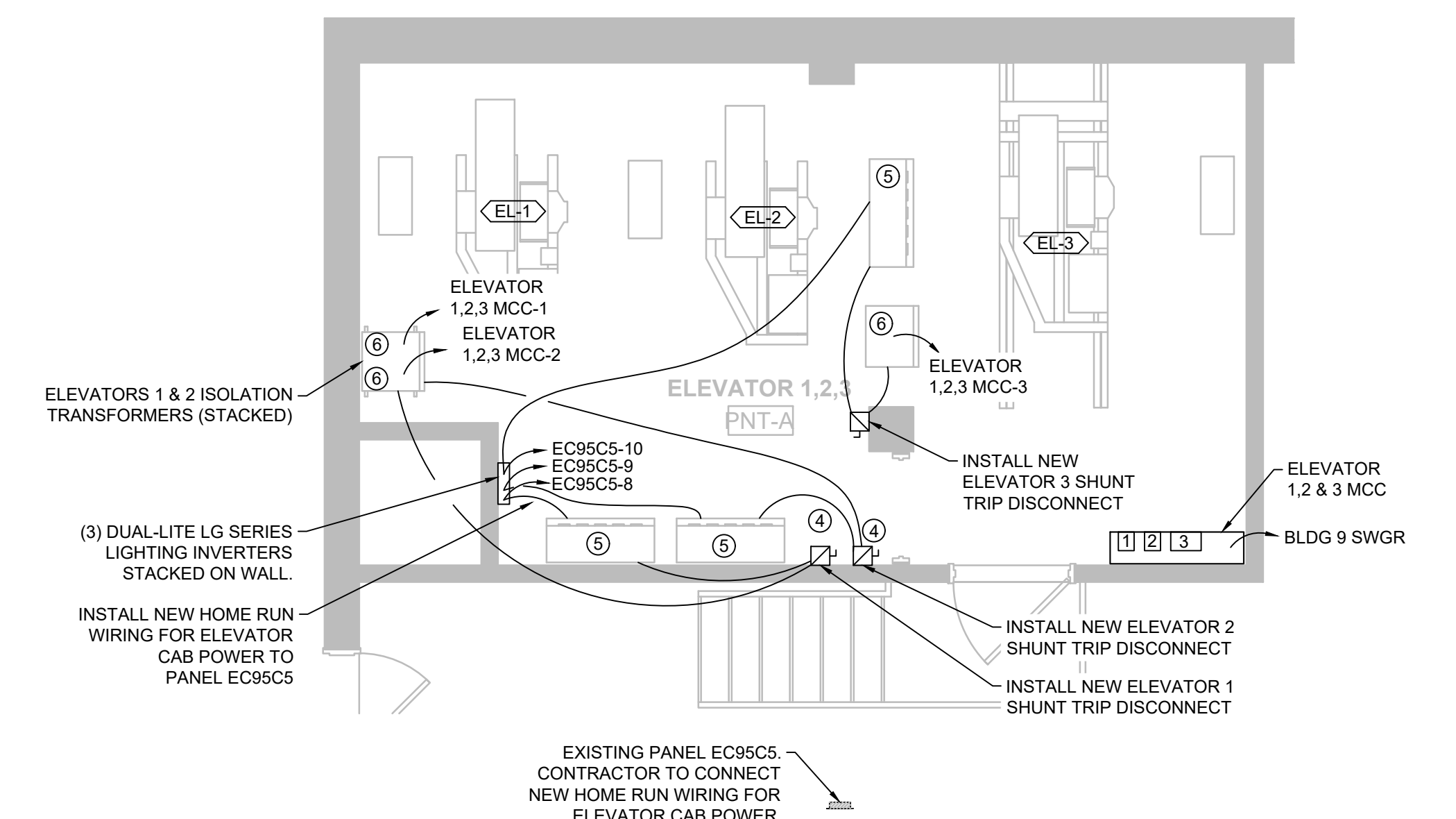
1 ELEVATORS 1, 2, & 3 - SHAFT LIGHTING DEMOLITION PLAN
E-101 SCALE: NTS



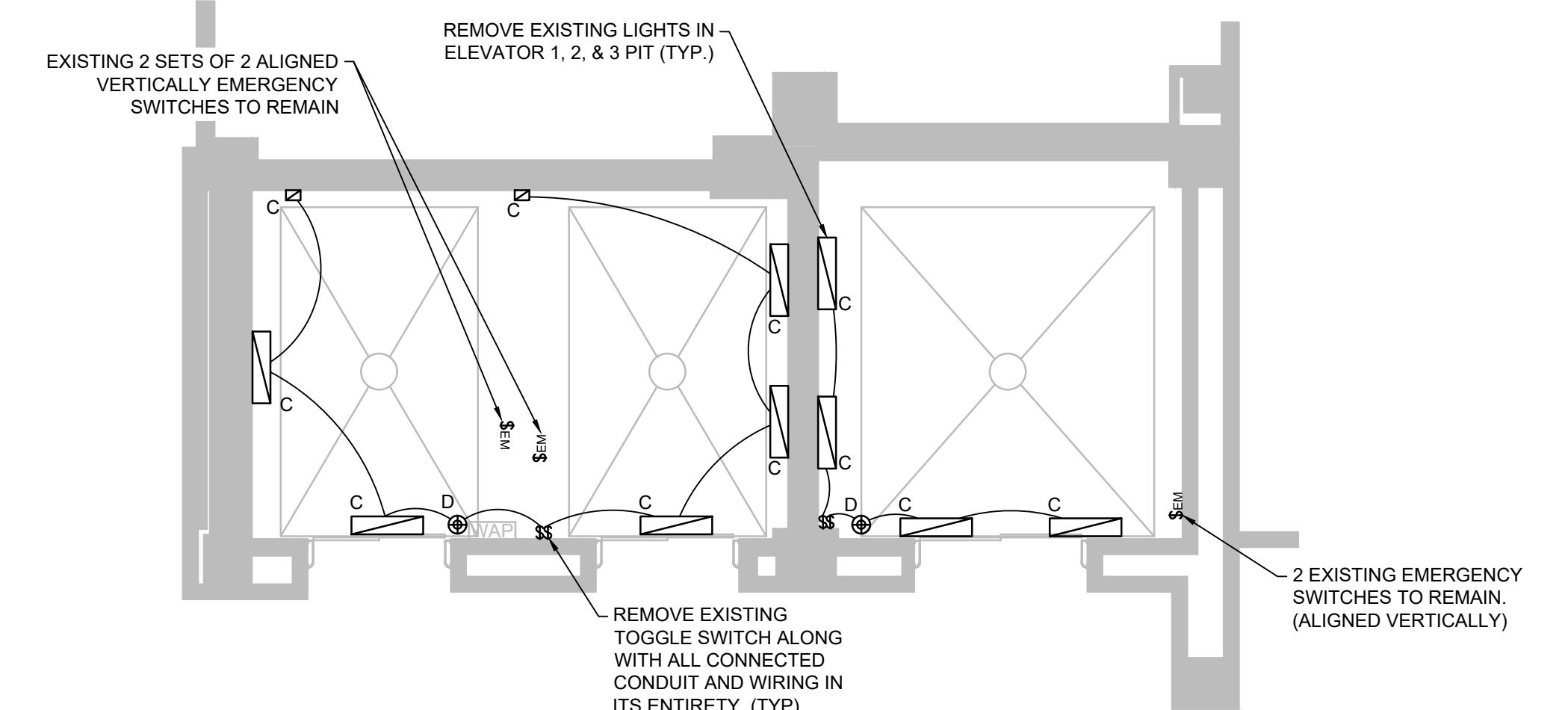
2 ELEVATORS 1, 2, & 3 - NEW SHAFT LIGHTING PLAN
E-101 SCALE: NTS



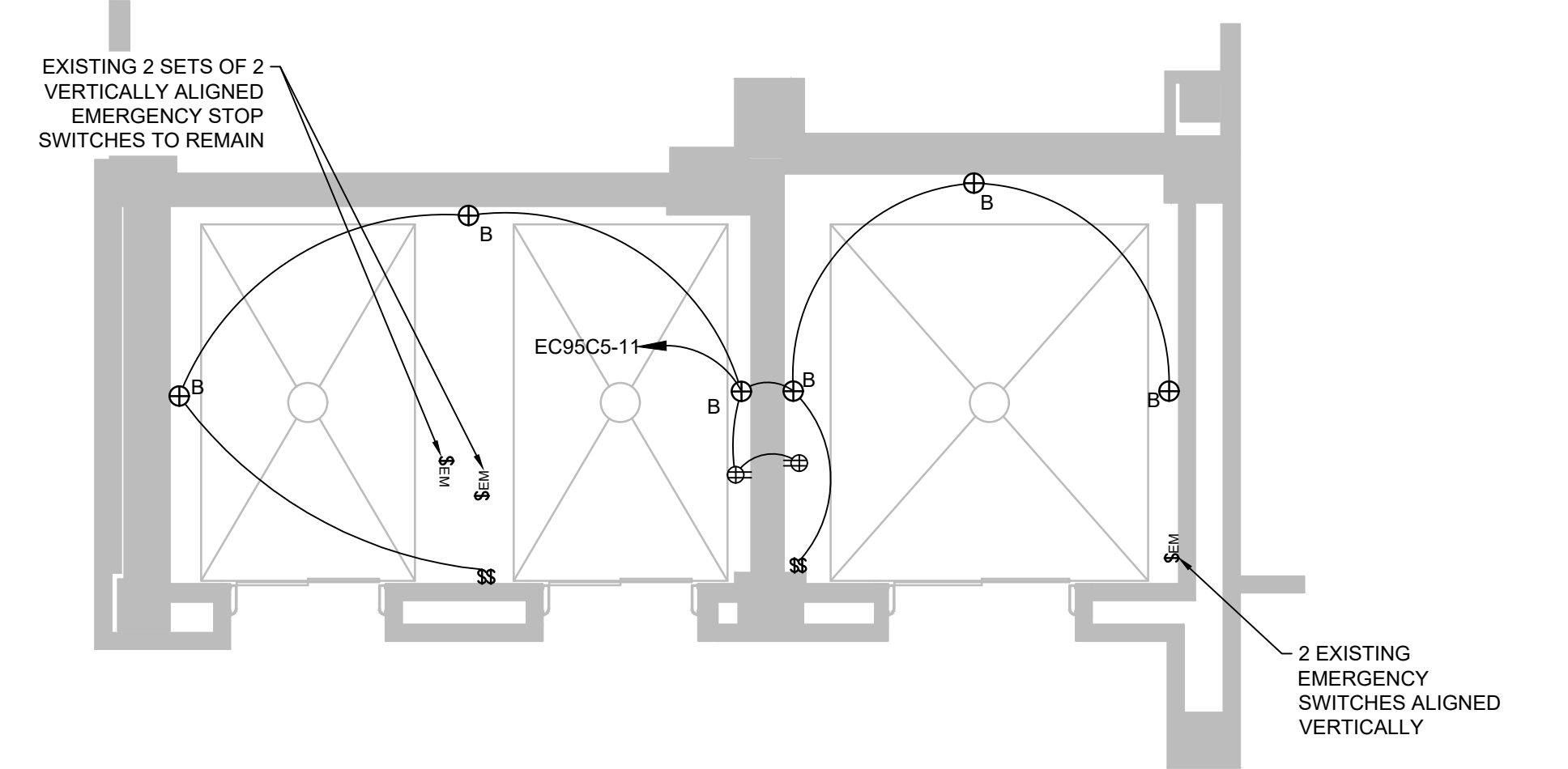
3 ELEVATORS 1, 2, & 3 - MACHINE ROOM POWER DEMOLITION PLAN
E-101 SCALE: 1/4" = 1'



4 ELEVATORS 1, 2, & 3 - NEW MACHINE ROOM POWER PLAN
E-101 SCALE: 1/4" = 1'



5 ELEVATOR 1, 2, & 3 - PIT ELECTRICAL DEMOLITION PLAN
E-101 SCALE: 1/4" = 1'



6 ELEVATORS 1, 2, & 3 - NEW PIT ELECTRICAL PLAN
E-105 SCALE: 1/4" = 1'

Revisions:	Date:

CONSULTANTS:

SUMMIT FIRE PROTECTION
SUMMIT FIRE CONSULTING
575 MINNEHAHA AVE WEST
ST. PAUL, MINNESOTA 55103
(612) 387-7050



ARCHITECT/ENGINEERS:

FOURFRONT DESIGN INC.
517 7th street
rapid city sd 57701
p 605.342.9470
f 605.342.2377
www.4front.biz

Drawing Title
ELEVATOR 1, ELEVATOR 2 & ELEVATOR 3 ELECTRICAL PLANS

Approved: Project Director
TODD DALZELL

Project Title
REFURBISH FARGO ELEVATORS AND REPLACE CONTROLS

Location
FARGO, NORTH DAKOTA

Date
12/20/2022

Checked
WW

Drawn
JS

Project Number
436-20-126

Building Number
154

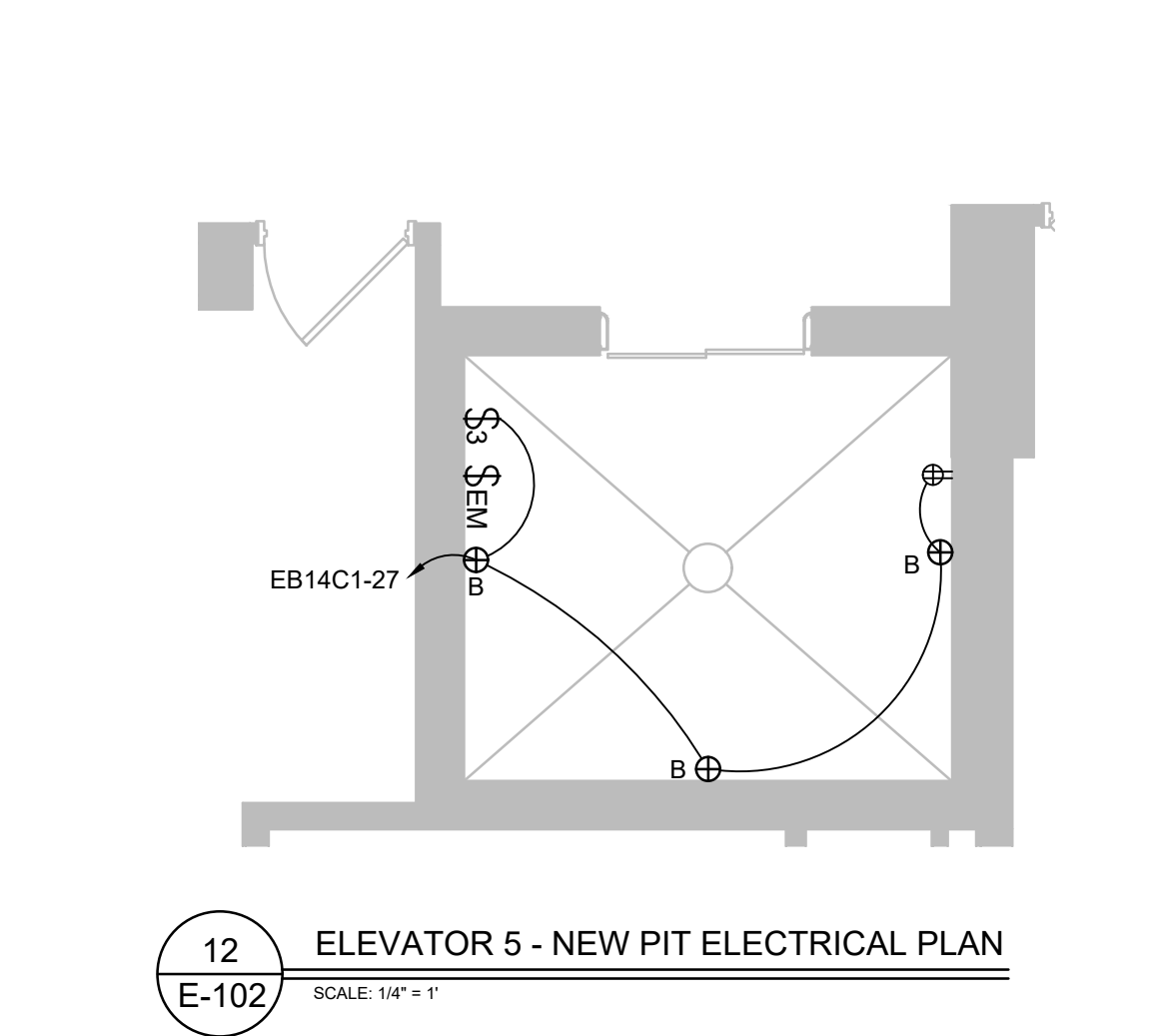
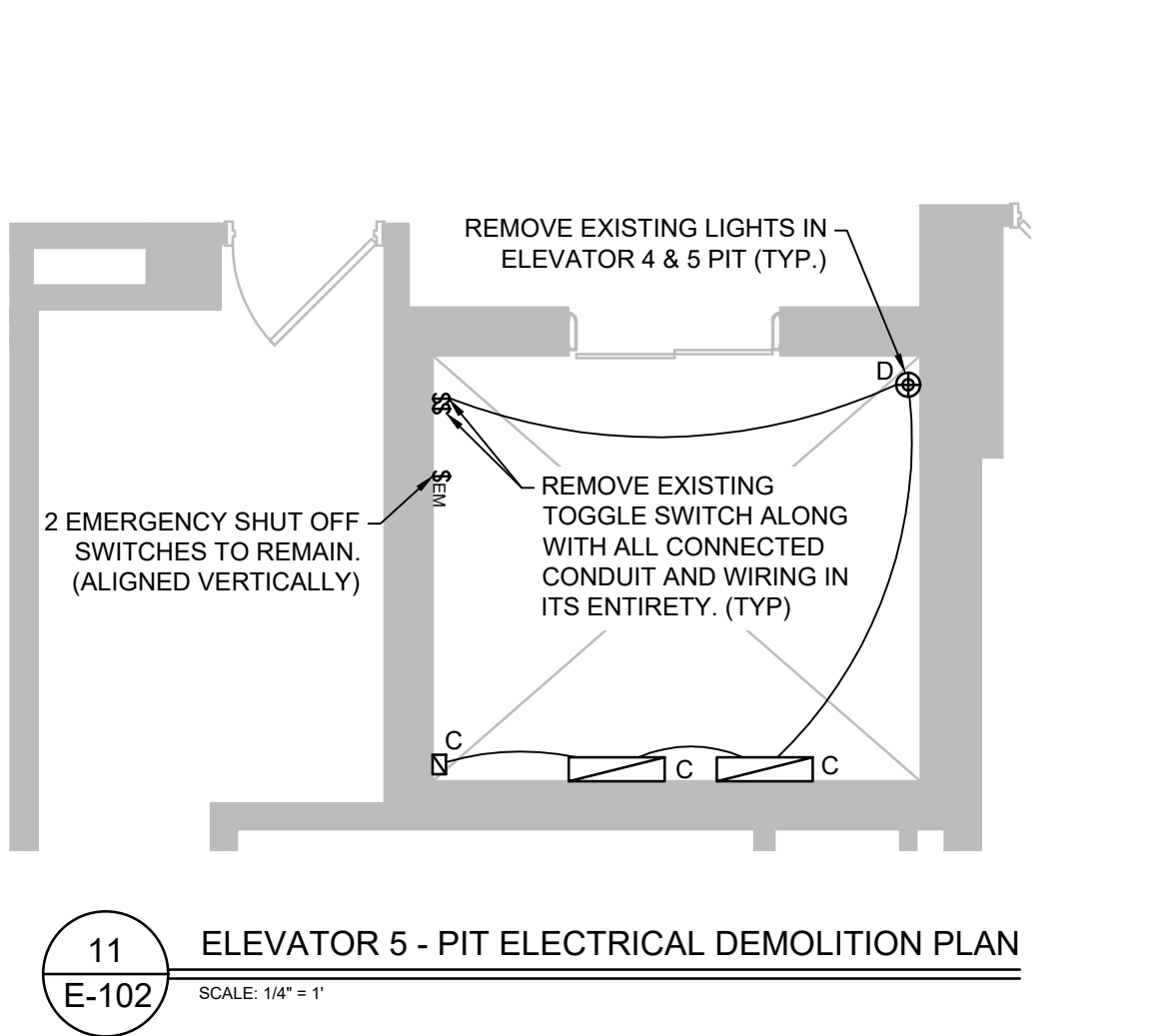
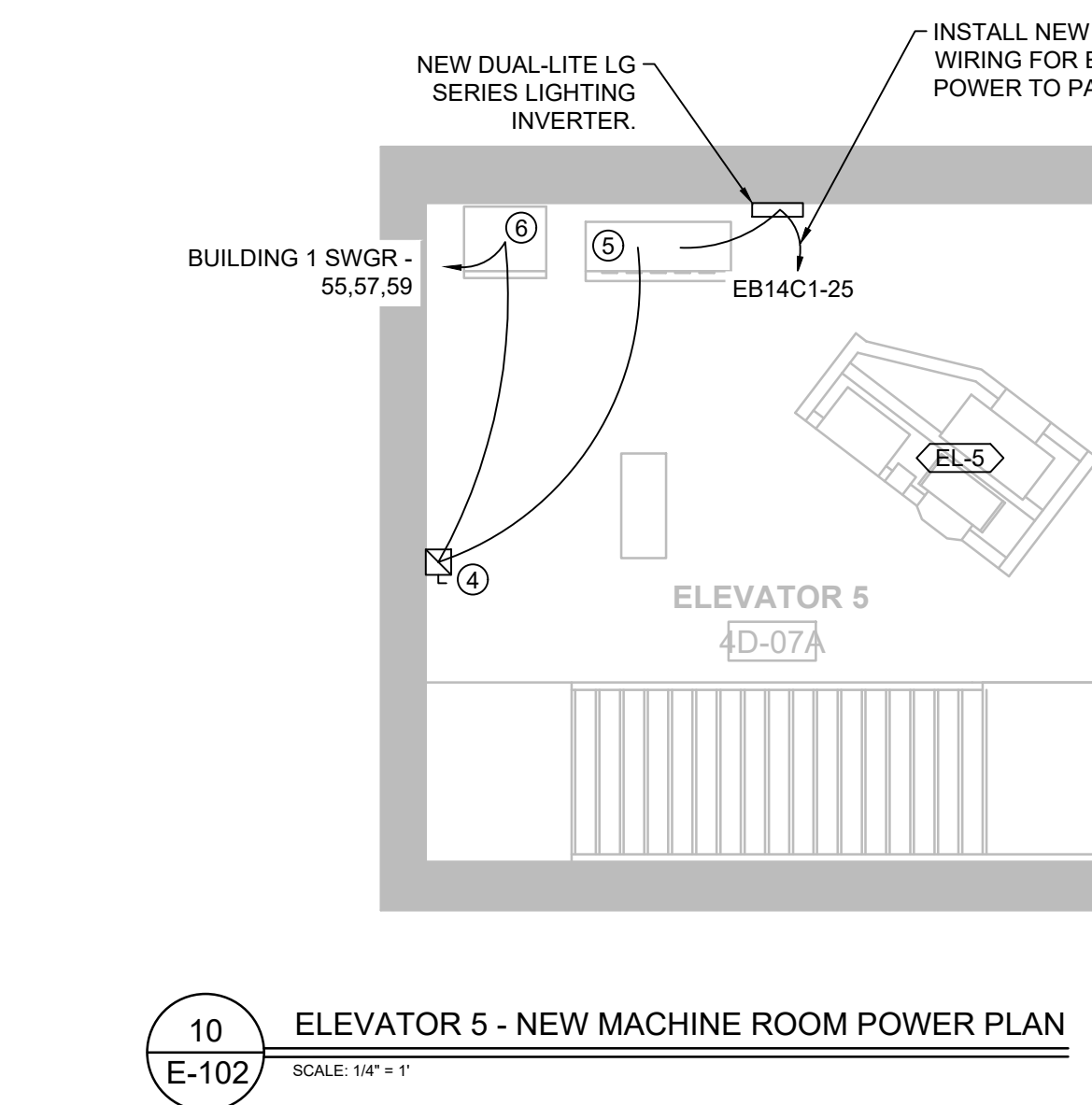
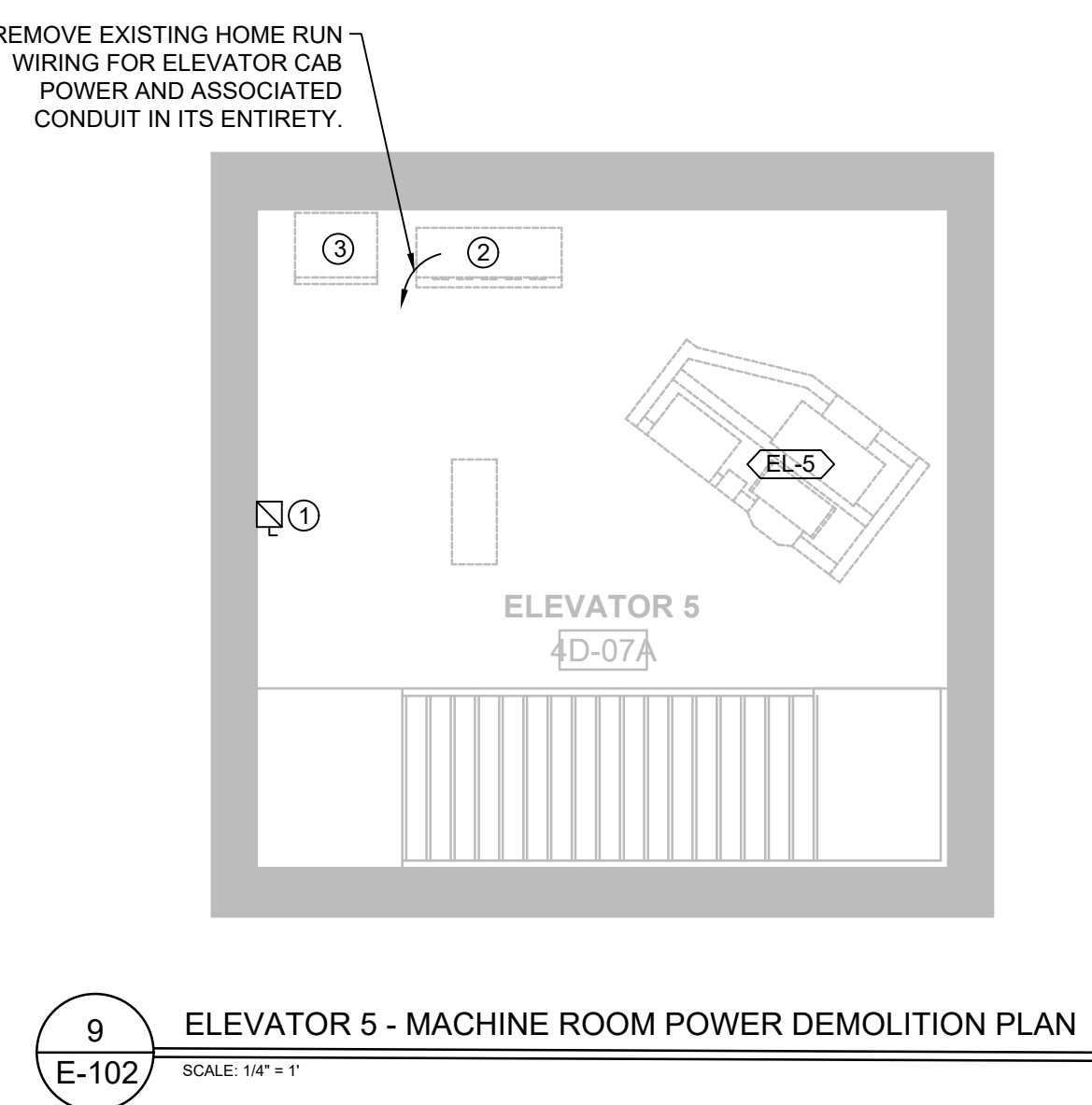
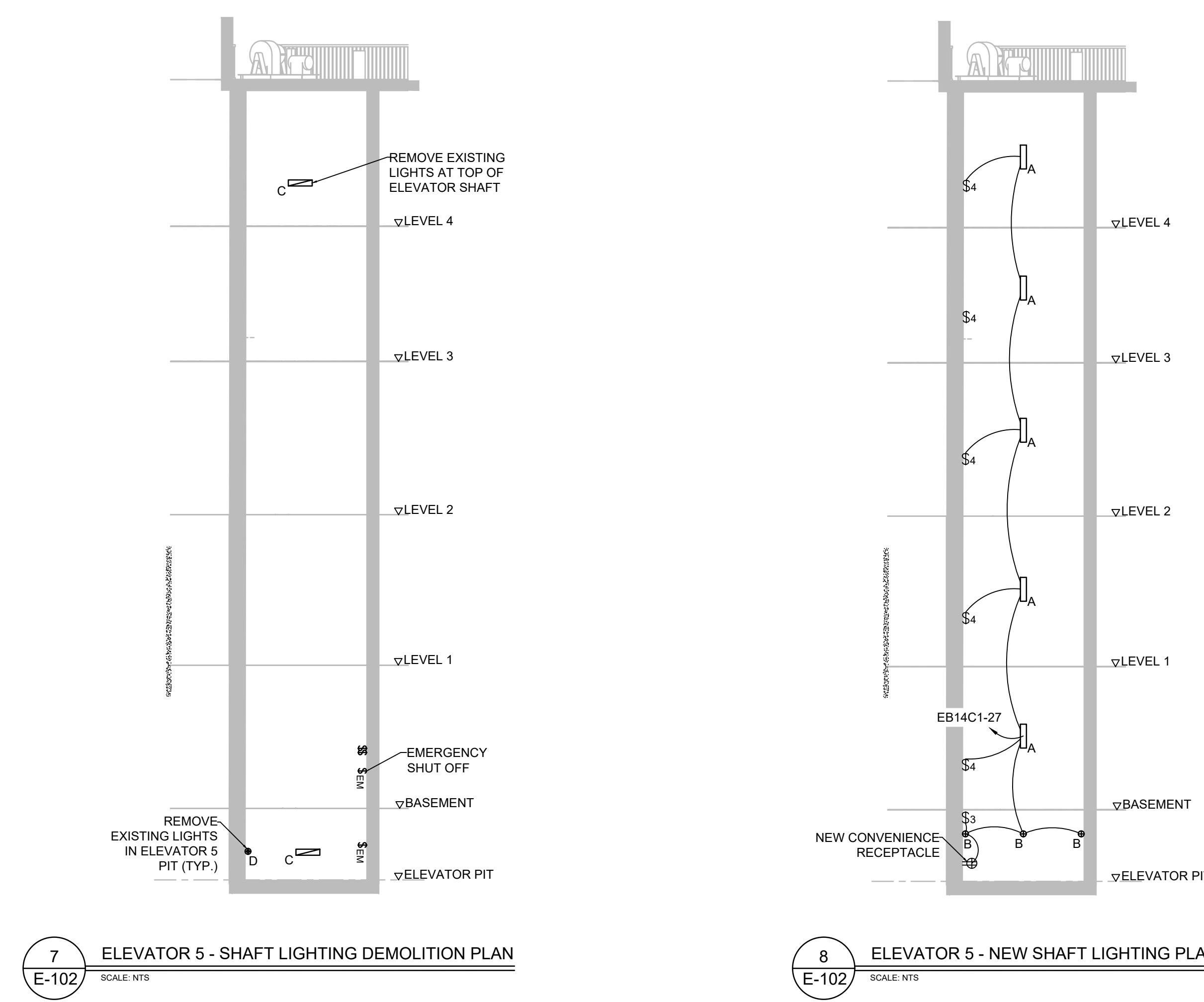
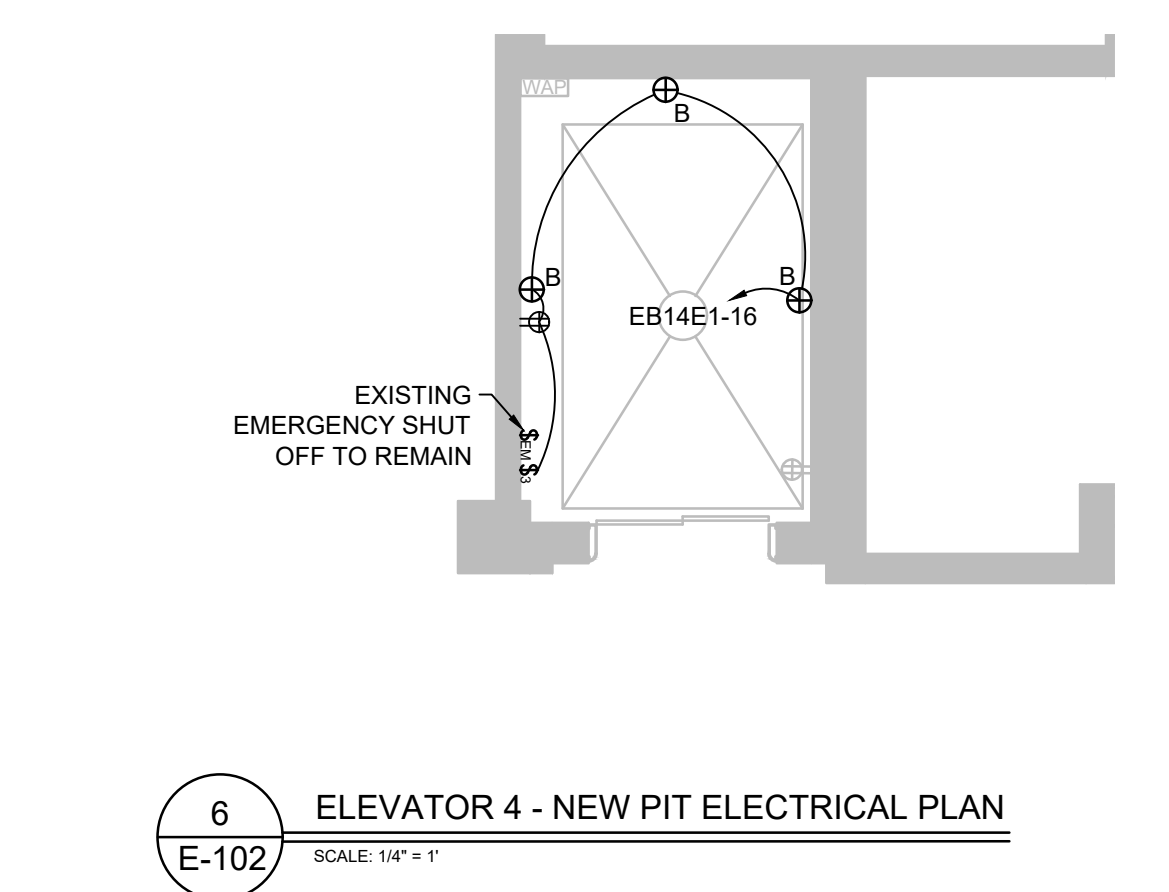
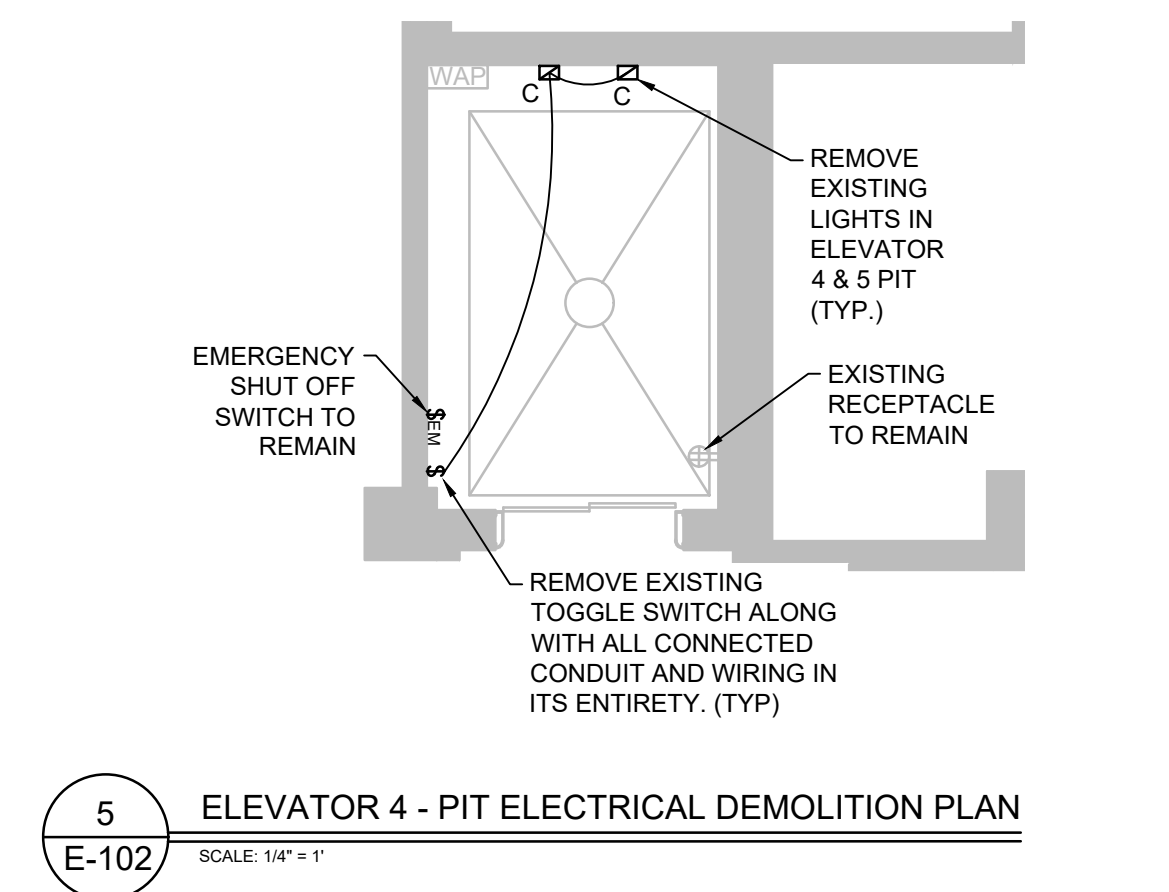
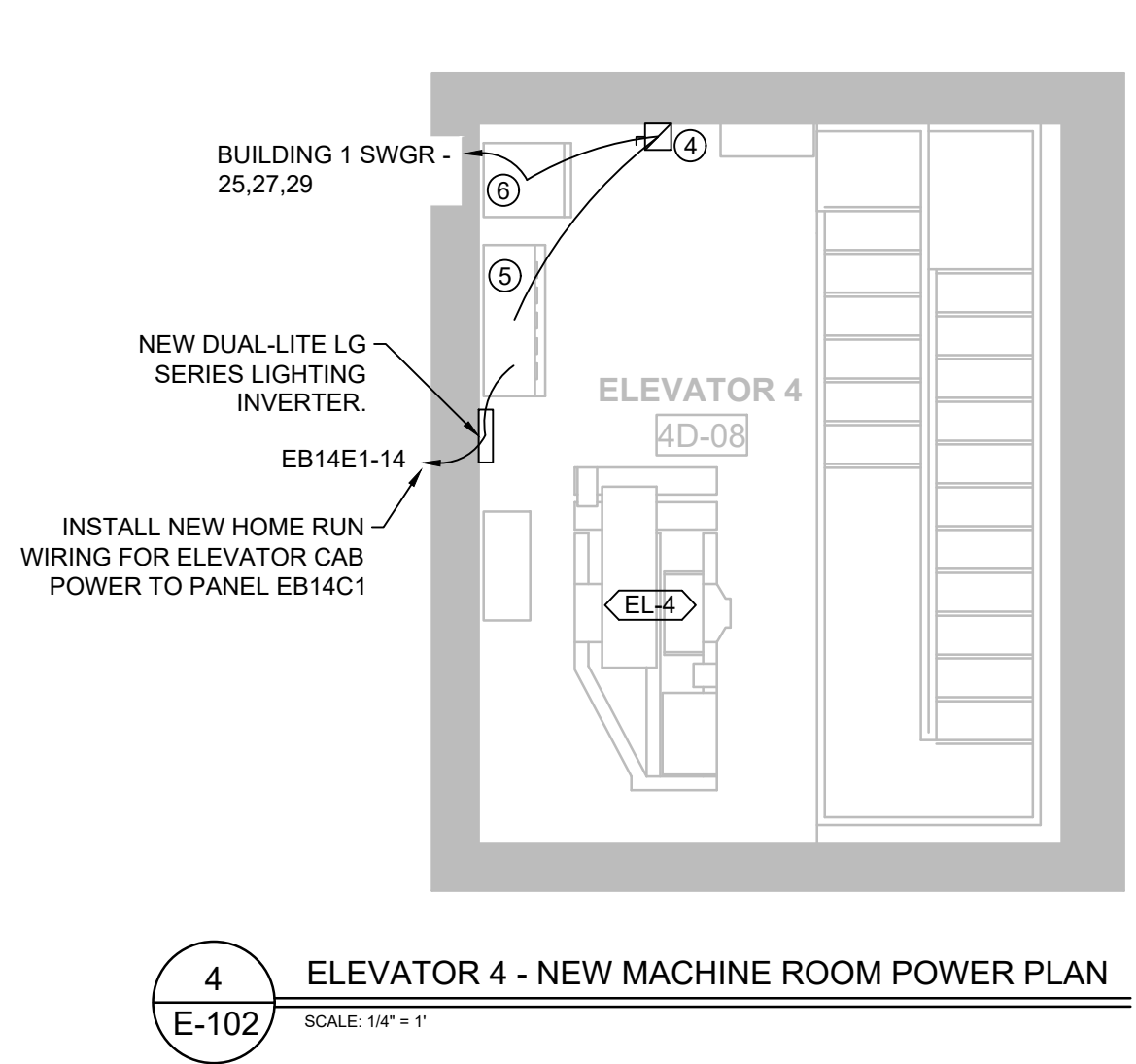
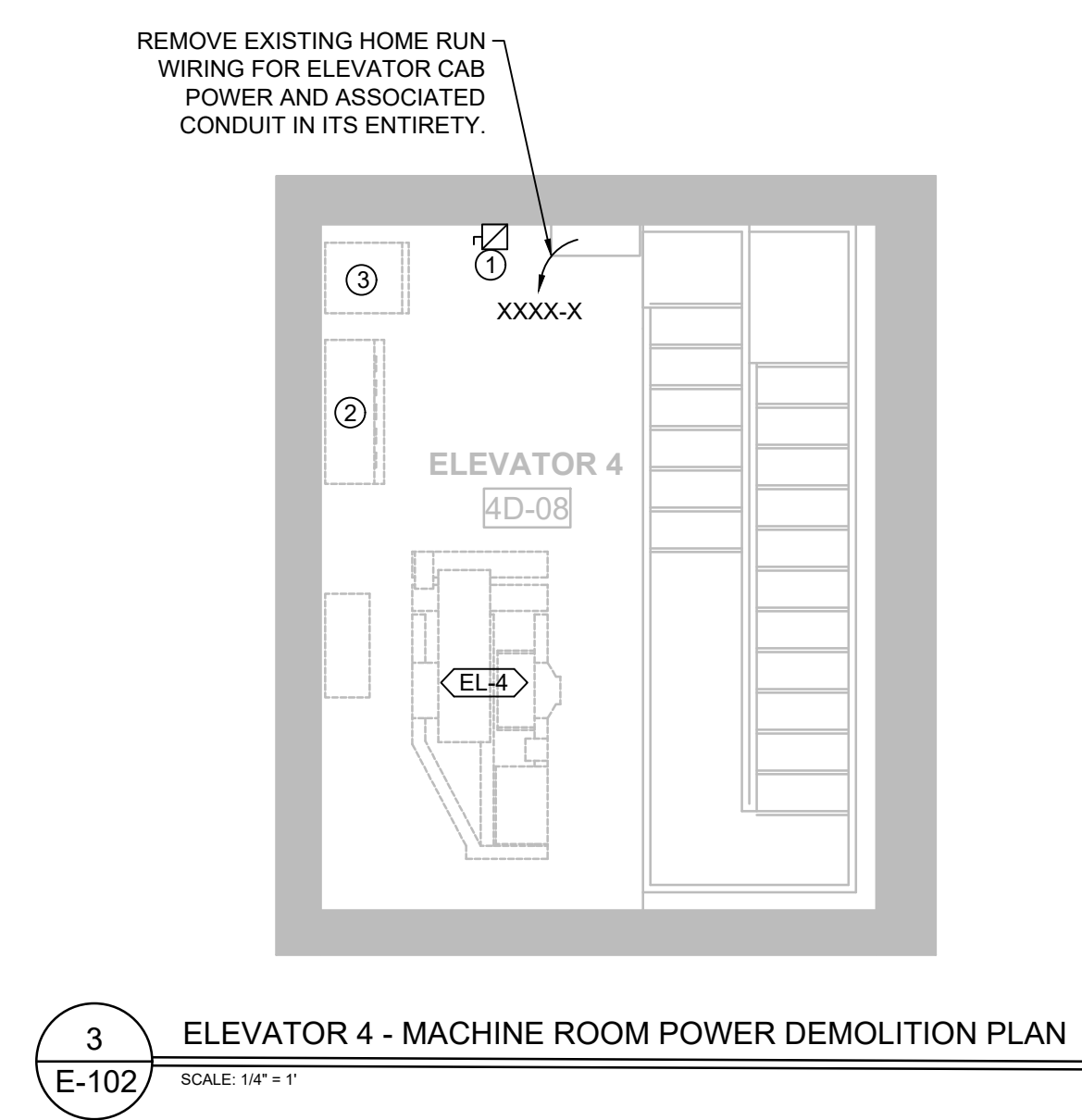
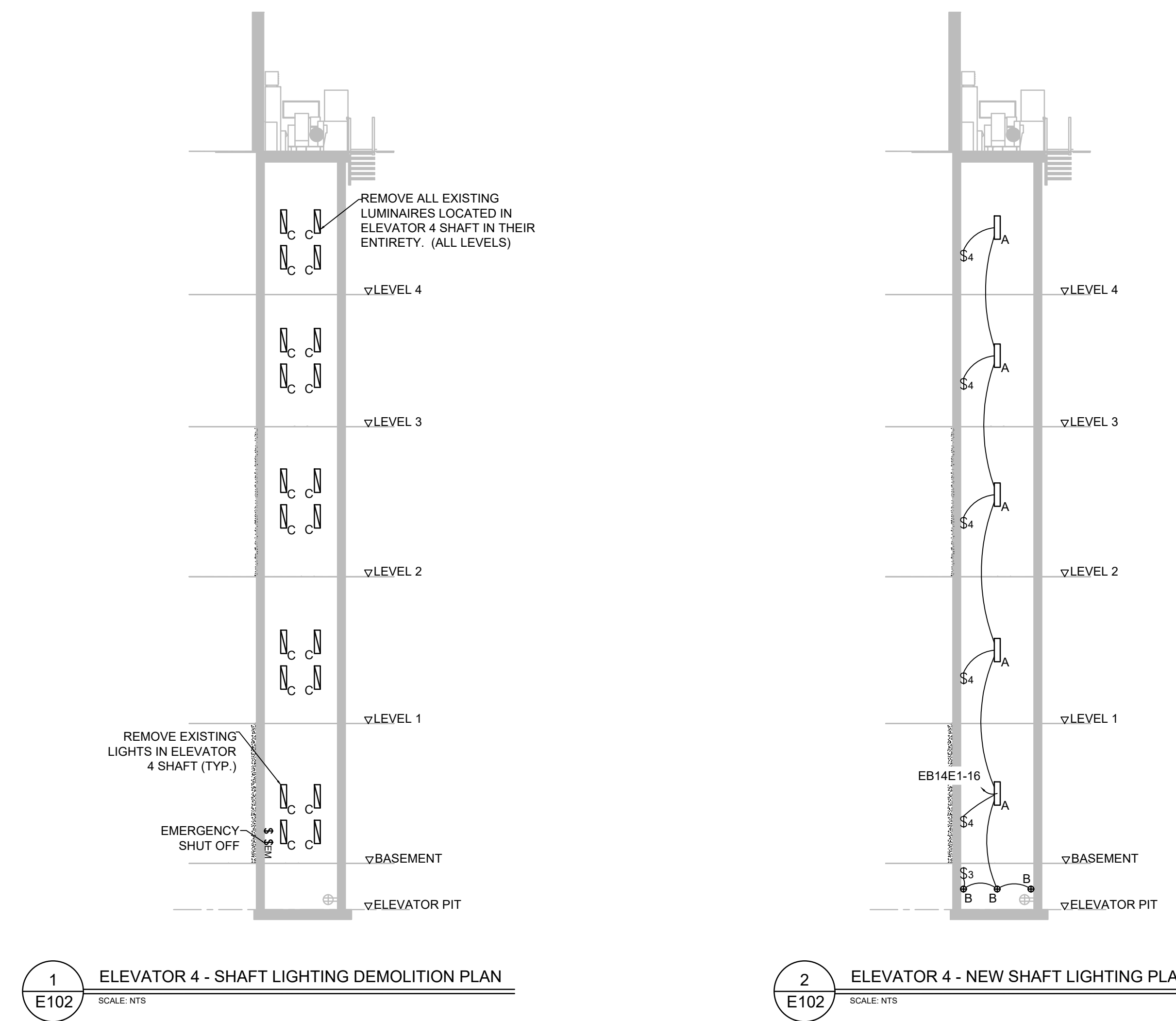
Drawing Number
E-101

Dwg. 27 of 41



one and one half inches = one foot
 one inch = one foot
 three quarters inch = one foot
 one half inch = one foot
 three eighths inch = one foot
 one quarter inch = one foot
 one eighth inch = one foot

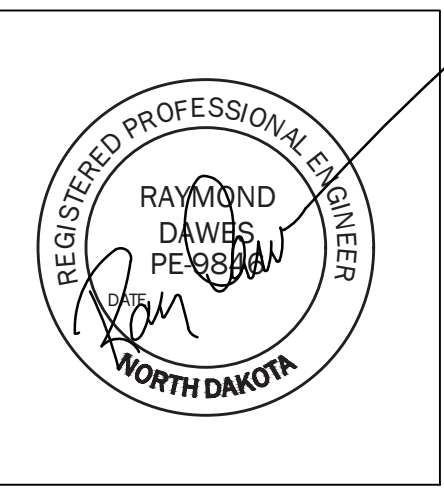
- KEYED ELECTRICAL NOTES**
- REMOVE AND DISPOSE OF EXISTING SHUNT TRIP DISCONNECT.
 - REMOVE AND DISPOSE OF EXISTING ELEVATOR CONTROLLER AND ASSOCIATED RACEWAY.
 - REMOVE AND DISPOSE OF EXISTING ELECTRICAL ISOLATION TRANSFORMER.
 - INSTALL NEW BUSSMANN MODEL PS-1-T48-R2-K-N1-B-F1-T COMBINATION SHUNT TRIP DISCONNECT PANEL WITH FIRE ALARM INTERLOCK RELAYS.
 - INSTALL NEW VARIABLE FREQUENCY/VARIABLE DRIVE CONTROLLER. SEE SPECIFICATION.
 - INSTALL NEW ELECTRICAL ISOLATION TRANSFORMER.



Revisions:	Date:

CONSULTANTS:

SUMMIT FIRE PROTECTION
 SUMMIT FIRE CONSULTING
 575 MINNEHAHA AVE WEST
 ST. PAUL, MINNESOTA 55103
 (612) 387-7050



ARCHITECT/ENGINEERS:

FOURFRONT DESIGN INC.
 517 7th street
 rapid city sd 57701
 p 605.342.9470
 f 605.342.2377
 www.4front.biz

Drawing Title
ELEVATOR 4 & ELEVATOR 5 ELECTRICAL PLANS

Approved: Project Director
TODD DALZELL

Project Title
REFURBISH FARGO ELEVATORS AND REPLACE CONTROLS

Location
FARGO, NORTH DAKOTA

Date
 12/20/2022

Checked
 WW

Drawn
 JS

Project Number
 436-20-126

Building Number
 154

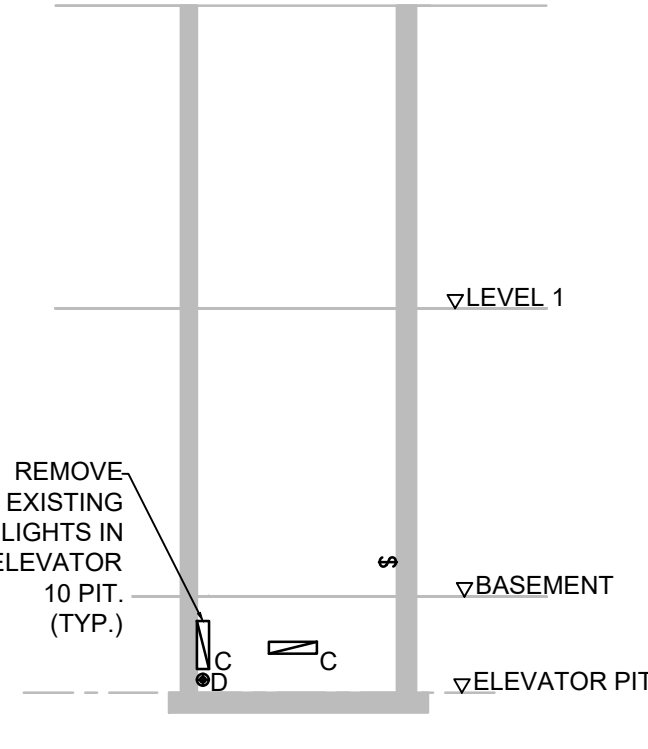
Drawing Number
E-102

Dwg. 28 of 41

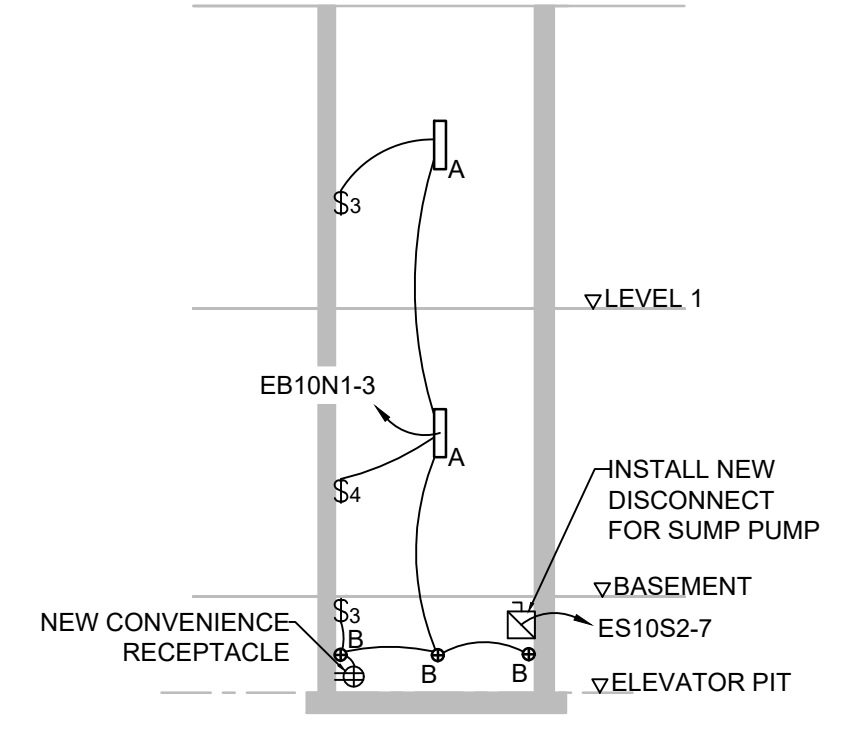
Office of Construction and Facilities Management

Department of Veterans Affairs

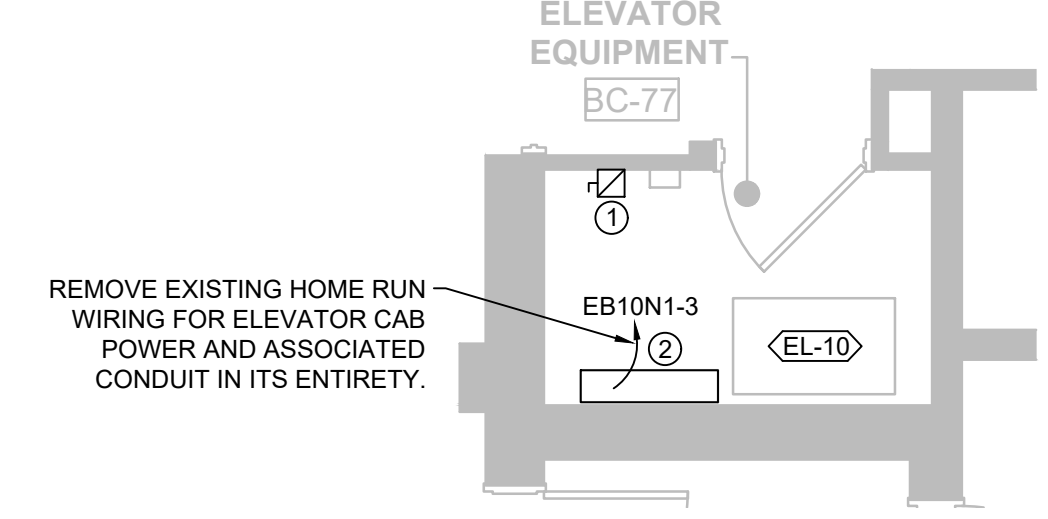
- KEYED ELECTRICAL NOTES**
- ① REMOVE AND DISPOSE OF EXISTING SHUNT TRIP DISCONNECT.
 - ② REMOVE AND DISPOSE OF EXISTING ELEVATOR CONTROLLER AND ASSOCIATED RACEWAY.
 - ③ REMOVE AND DISPOSE OF EXISTING ELECTRICAL ISOLATION TRANSFORMER.
 - ④ INSTALL NEW BUSSMANN MODEL PS-1-T48-R2-K-N1-B-F1-T COMBINATION SHUNT TRIP DISCONNECT PANEL WITH FIRE ALARM INTERLOCK RELAYS.
 - ⑤ INSTALL NEW VARIABLE FREQUENCY/VARIABLE DRIVE CONTROLLER. SEE SPECIFICATION.
 - ⑥ INSTALL NEW ELECTRICAL ISOLATION TRANSFORMER.



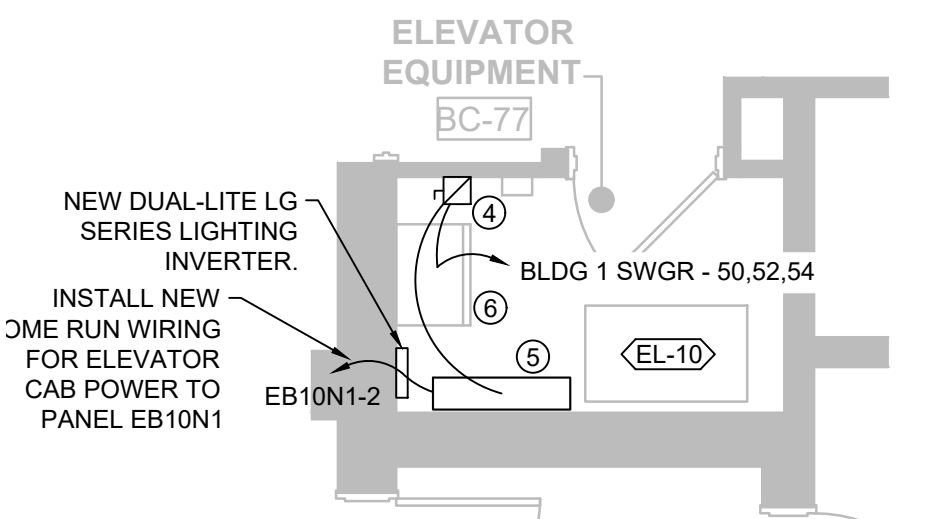
1 ELEVATOR 10 SHAFT - LIGHTING DEMOLITION PLAN
SCALE: NTS
E-105



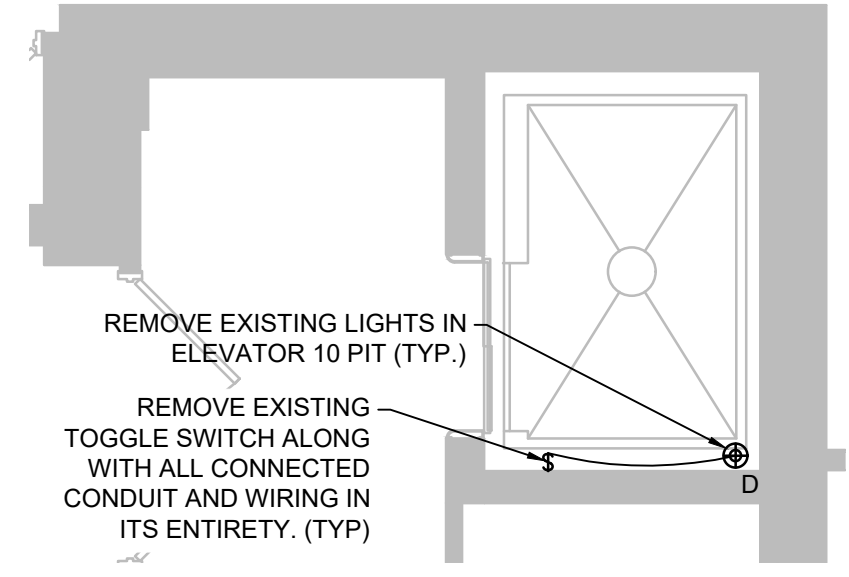
2 ELEVATOR 10 SHAFT - NEW LIGHTING PLAN
SCALE: NTS
E-105



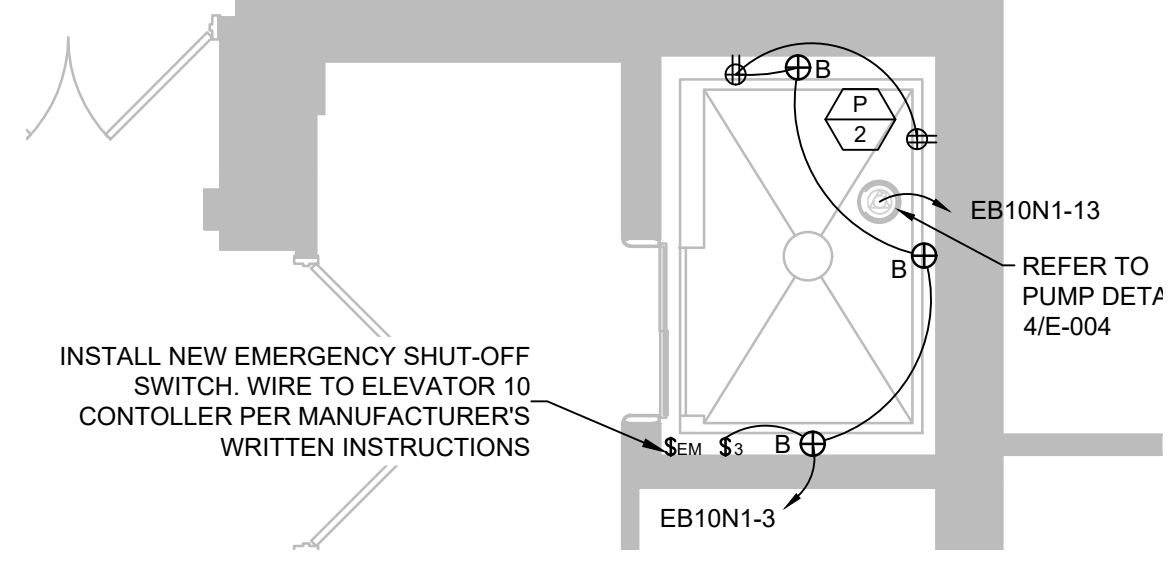
3 ELEVATOR 10 MACHINE ROOM - POWER DEMOLITION PLAN
SCALE: 1/4" = 1'
E-105



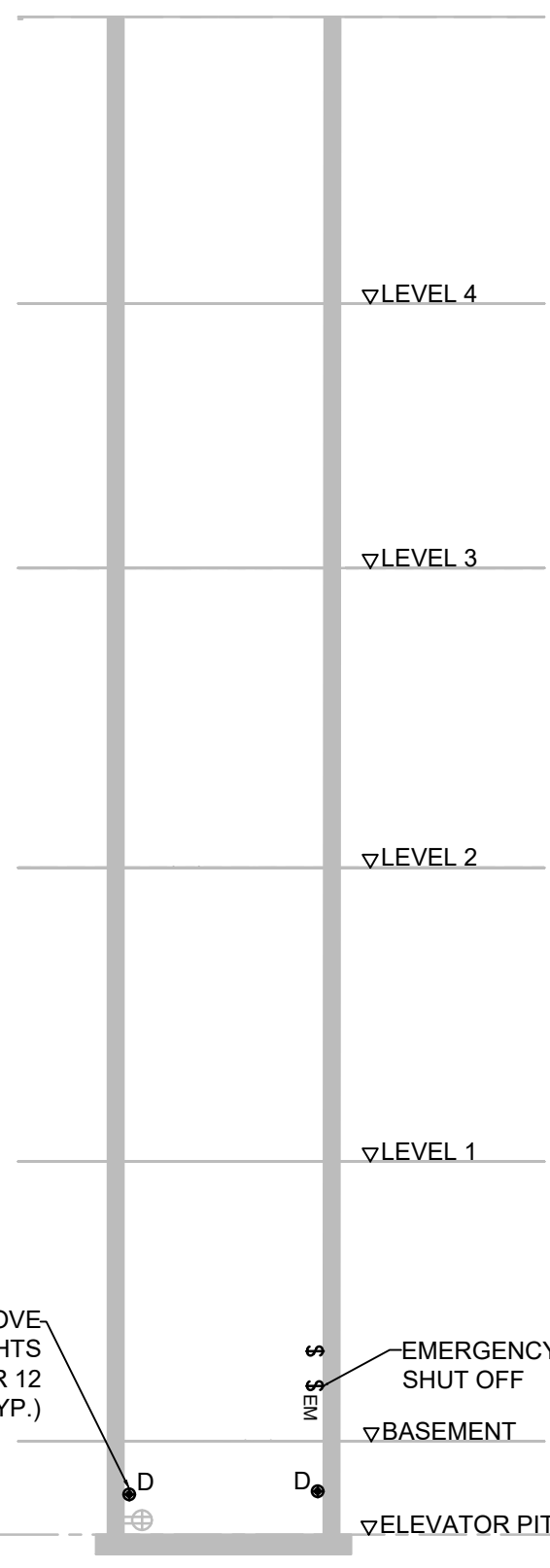
4 ELEVATOR 10 MACHINE ROOM - NEW POWER PLAN
SCALE: 1/4" = 1'
E-105



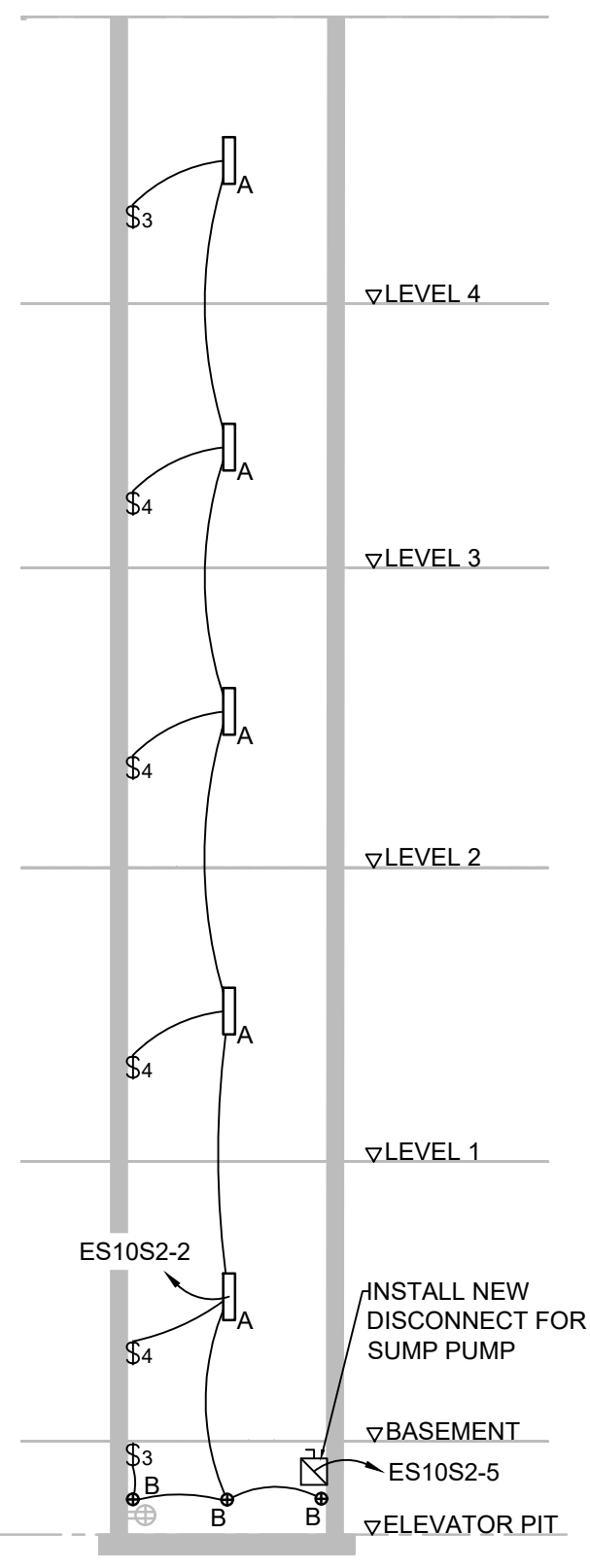
5 ELEVATOR 10 SHAFT - POWER DEMOLITION PLAN
SCALE: 1/4" = 1'
E-105



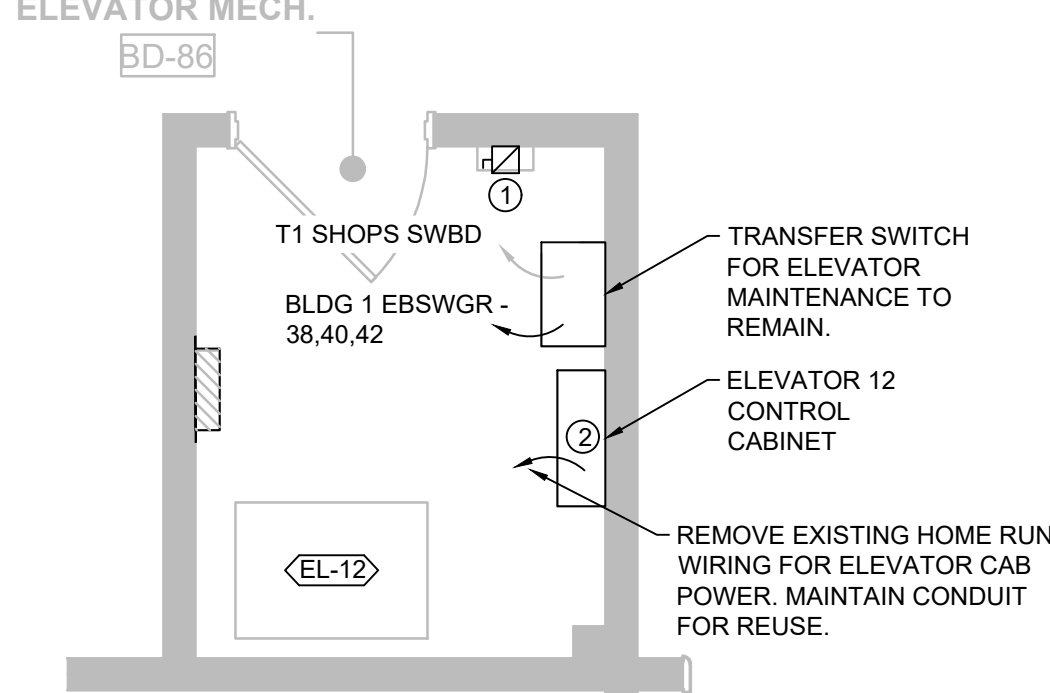
6 ELEVATOR SHAFT 10 - NEW POWER PLAN
SCALE: 1/4" = 1'
E-105



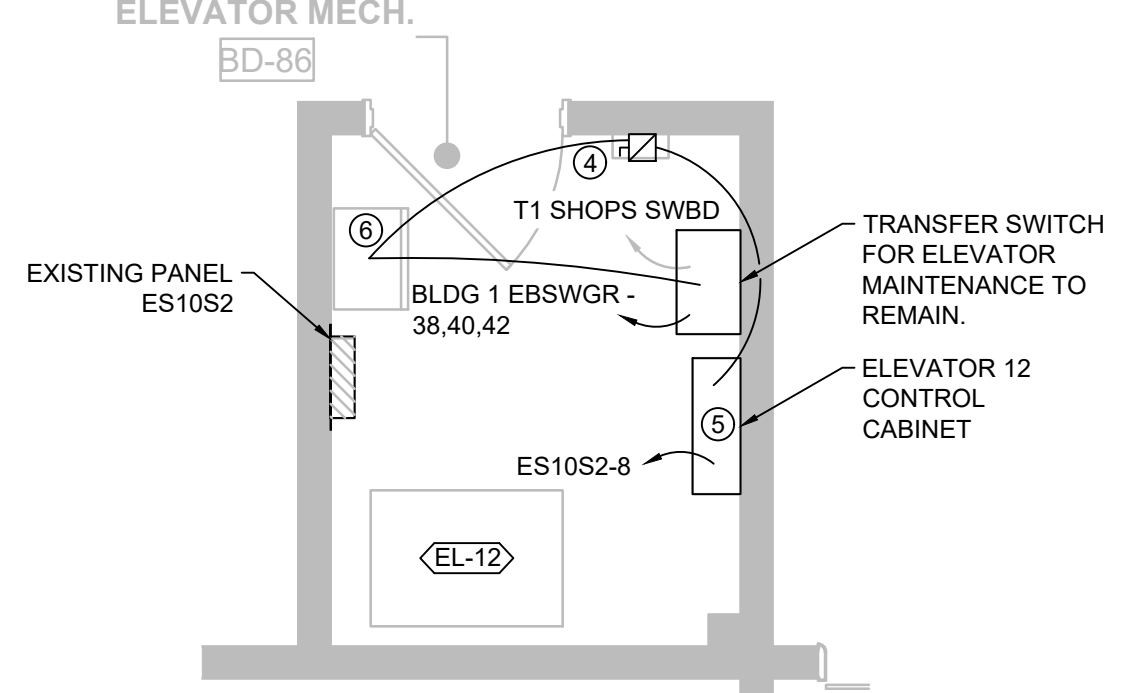
7 ELEVATOR 12 - SHAFT LIGHTING DEMOLITION PLAN
SCALE: NTS
E-105



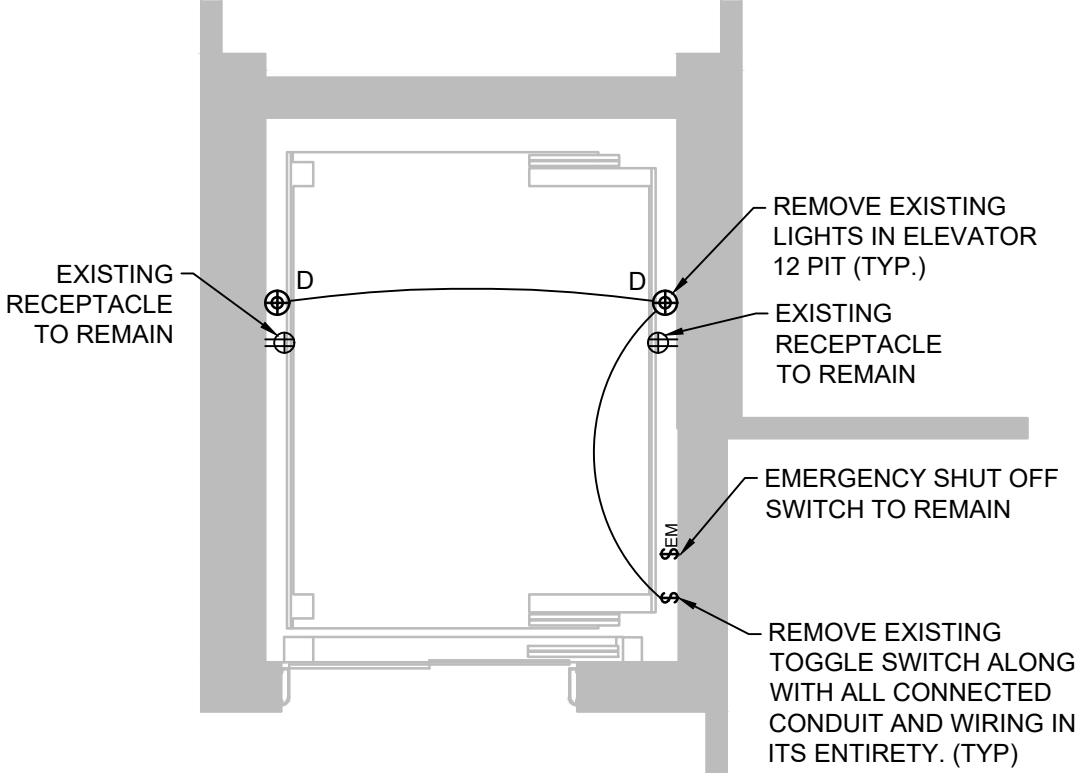
8 ELEVATOR 12 - NEW SHAFT LIGHTING PLAN
SCALE: NTS
E-105



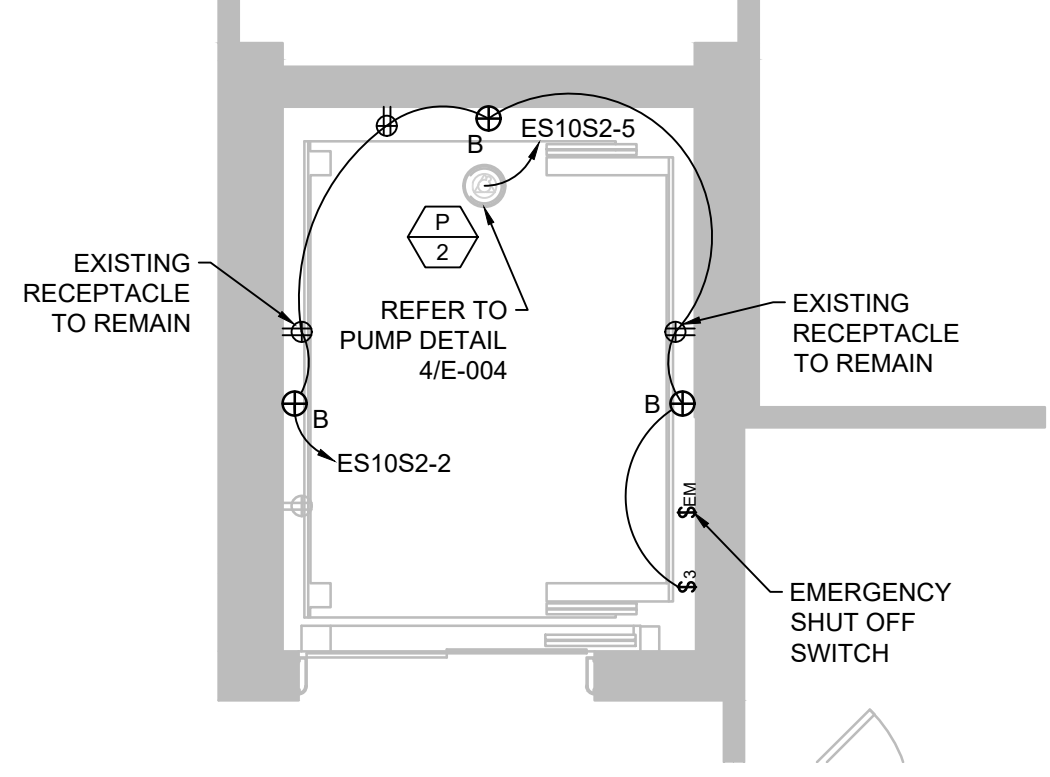
9 ELEVATOR 12 - MACHINE ROOM POWER DEMOLITION PLAN
SCALE: 1/4" = 1'
E-105



10 ELEVATOR 12 - NEW MACHINE ROOM POWER PLAN
SCALE: 1/4" = 1'
E-105



11 ELEVATOR 12 - PIT ELECTRICAL DEMOLITION PLAN
SCALE: 1/4" = 1'
E-105



12 ELEVATOR 12 - NEW PIT ELECTRICAL PLAN
SCALE: 1/4" = 1'
E-105

Revisions:	Date:

CONSULTANTS:

SUMMIT FIRE PROTECTION
SUMMIT FIRE CONSULTING
575 MINNEHAHA AVE WEST
ST. PAUL, MINNESOTA 55103
(612) 387-7050



ARCHITECT/ENGINEERS:

FOURFRONT DESIGN INC.
517 7th street
rapid city sd 57701
p 605.342.9470
f 605.342.2377
www.4front.biz

Drawing Title
ELEVATOR 10 & ELEVATOR 12 ELECTRICAL PLANS

Approved: Project Director
TODD DALZELL

Project Title
REFURBISH FARGO ELEVATORS AND REPLACE CONTROLS

Location
FARGO, NORTH DAKOTA

Date
12/20/2022

Checked
WW

Drawn
JS

Project Number
436-20-126

Building Number
154

Drawing Number
E-105

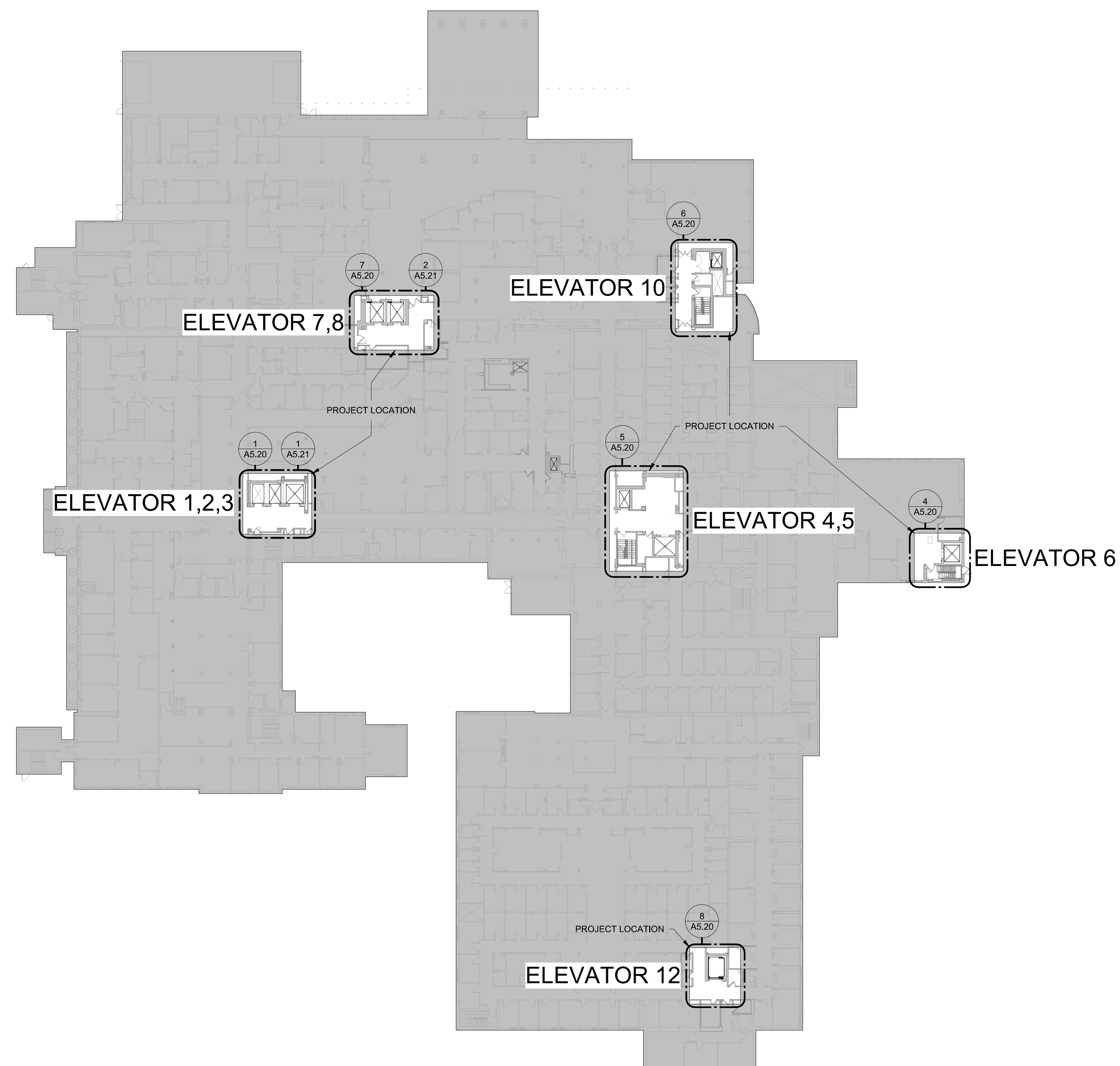
Dwg. 31 of 41

Office of Construction and Facilities Management

Department of Veterans Affairs

GENERAL NOTES:

1. THIS PROJECT INCLUDES THE DESIGN, INSTALLATION, AND REMODEL OF AN EXISTING WET FIRE SPRINKLER SYSTEMS FOR THE ELEVATOR REHAB PROJECT FOR THE EXISTING BUILDING AS SHOWN ON THESE PLANS PER NFPA 13 - 13, LOCAL BUILDING CODES, AND THE VA FIRE PROTECTION DESIGN MANUAL.
2. FINAL PIPE SIZING AND LOCATION IS TO BE DETERMINED BY THE FIRE SPRINKLER CONTRACTOR.
3. REFER TO SPECIFICATION SECTIONS 21 00 60 & 21 13 13 FOR ADDITIONAL FIRE SPRINKLER SYSTEM INFORMATION.
4. ALL SPRINKLERS SHALL BE SIDEWALL TYPE.
5. ALL SPRINKLER SHALL BE UL LISTED AND FM APPROVED PER THE VA FIRE PROTECTION DESIGN MANUAL.
6. SPRINKLERS ARE REQUIRED TO BE PROTECTED DURING ANY PAINTING.
7. ALL SPRINKLER, FITTINGS AND PIPING SHALL MEET THE REQUIREMENTS OF NFPA 13.
8. NOT ALL REQUIRED SPRINKLERS AND PIPING ARE SHOWN. CONSIDERATION FOR ADDITIONAL SPRINKLERS, PIPING, AND FITTINGS DUE TO INTERFERENCE WITH OTHER TRADES, OBSTRUCTIONS, IMPROVED AESTHETICS, OR OWNER/AHJ REQUESTS SHALL BE MADE PRIOR TO BID BY THE FIRE SPRINKLER CONTRACTOR.
9. FIRE SPRINKLER CONTRACTOR TO PROVIDE ALL NECESSARY MATERIAL, INCLUDING BUT NOT LIMITED TO, SPRINKLERS, PIPING, VALVES, AND LABOR TO PROVIDE COMPLETE SYSTEM(S) TO COMPLY WITH NFPA 13, LOCAL BUILDING CODES, AND THE VA FIRE PROTECTION DESIGN MANUAL. ALL HYDRAULIC CALCULATIONS AND PIPE SIZING ARE THE RESPONSIBILITY OF THE FIRE SPRINKLER CONTRACTOR. ANY AND ALL CLARIFICATIONS TO BID DOCUMENTS SHALL BE MAKE PRIOR TO BID.
10. ALL SPRINKLERS LOCATED NEAR HEAT PRODUCING DEVICES SHALL BE PROVIDED WITH THE APPROPRIATE TEMPERATURE RATING PER THE REQUIREMENTS OF NFPA 13.
11. ALL PIPING 2-1/2" AND LARGER SHALL BE GROOVED SCHEDULE 10 STEEL PIPING WITH ROLLGROOVES ONLY UNLESS NOTED OTHERWISE.
12. ALL PIPING 2" AND SMALLER SHALL BE THREADED SCHEDULE 40 BLACK STEEL PIPING UNLESS NOTED OTHERWISE.
13. ALL THREADED FITTINGS SHALL BE DUCTILE IRON.
14. NO CPVC EXCEPT FOR DRAIN PIPING
15. ALL MATERIAL BEING INSTALLED MUST BE NEW AND LISTED FOR USE.
16. THE FIRE SPRINKLER CONTRACTOR SHALL VERIFY LOCATIONS AND ROUTING OF PIPE PRIOR TO BID. NO ALLOWANCES FOR EXTRA FITTINGS, PIPING, SPRINKLERS, ETC. WILL BE ALLOWED AFTER AWARD OF CONTRACT. PIPING SHOWN ON THESE PLANS IS SCHEMATIC IN NATURE. FINAL ROUTING AND SPRINKLER LOCATIONS TO BE DETERMINED BY THE FIRE PROTECTION CONTRACTOR DURING THE DESIGN AND COORDINATION PHASES OF THE PROJECT.
17. ALL ARCHITECTURAL, STRUCTURAL, MECHANICAL, & ELECTRICAL FEATURES INDICATED ON THE PF SHEETS SHALL BE VERIFIED BY CONSULTING THE A/S/M&E SHEETS.
18. REQUIRED SYSTEM TESTING IS THE RESPONSIBILITY OF THE FIRE SPRINKLER CONTRACTOR PER NFPA 13.
19. THE FIRE SPRINKLER CONTRACTOR SHALL BE RESPONSIBLE FOR VERIFYING ALL EXISTING SPRINKLER SYSTEM COMPONENTS SHOWN ON THESE PLANS PRIOR TO BID.
20. SHOULD ANY EXISTING SYSTEM DEFICIENCIES NOT INDICATED ON THESE PLANS BE DISCOVERED AS PART OF CONDUCTING THE WORK INCLUDED IN THIS SCOPE, THEY SHALL BE BROUGHT TO THE ATTENTION OF THE ENGINEER OF RECORD IMMEDIATELY.
21. THESE PLANS SHALL BE USED AS A GENERAL GUIDE IN THE GENERATION OF THE FIRE SPRINKLER CONTRACTOR'S BID AND ARE NOT INTENDED TO INDICATE THE ENTIRE EXTENT OF SPRINKLER PROTECTION REQUIRED. ANY AREAS REQUIRED TO BE PROTECTED PER NFPA 13 THAT MAY OR MAY NOT BE SHOWN WITH PROTECTION ON THESE PLANS SHALL BE INCLUDED IN THE CONTRACTOR'S BID.
22. NO ALLOWANCES FOR EXTRAS WILL BE ALLOWED AFTER AWARD OF CONTRACT.
23. FIRE SPRINKLER CONTRACTOR IS RESPONSIBLE FOR TRACING BACK TO FIRE RISER FOR THE CREATION AND DOCUMENTATION FOR ANY NECESSARY HYDRAULIC CALCULATIONS. THIS INFORMATION SHALL BE INCLUDED ON CONTRACTOR'S SHOP DRAWINGS SO CALCULATIONS MAY BE PROPERLY REVIEWED.



1 FLOOR PLAN - LEVEL 1 - OVERALL REFERENCE PLAN
1/32" = 1'-0"

CONSULTANTS:

SUMMIT
FIRE PROTECTION
SUMMIT FIRE CONSULTING
575 MINNEHAHA AVE WEST
ST. PAUL, MINNESOTA 55103
(612) 387-7050



ARCHITECT/ENGINEERS

FOURFRONT
DESIGN INC.
FOURFRONT DESIGN, INC.
517 7TH STREET
RAPID CITY, SOUTH DAKOTA 57701
PH: (605) 342-9470
FAX: (605) 342-2377
WWW.FOURFRONTDESIGN.COM

Drawing Title
**FIRE PROTECTION -
GENERAL NOTES**

Approved: Project Director
Owner

Project Title
**REFURBISH ELEVATORS AND
REPLACE CONTROLS**

Location
2101 ELM STREET
FARGO, ND 58102

Project Number
437-22-101

Drawing Number
F1.00
Dwg. of

Office of
Construction
and Facilities
Management

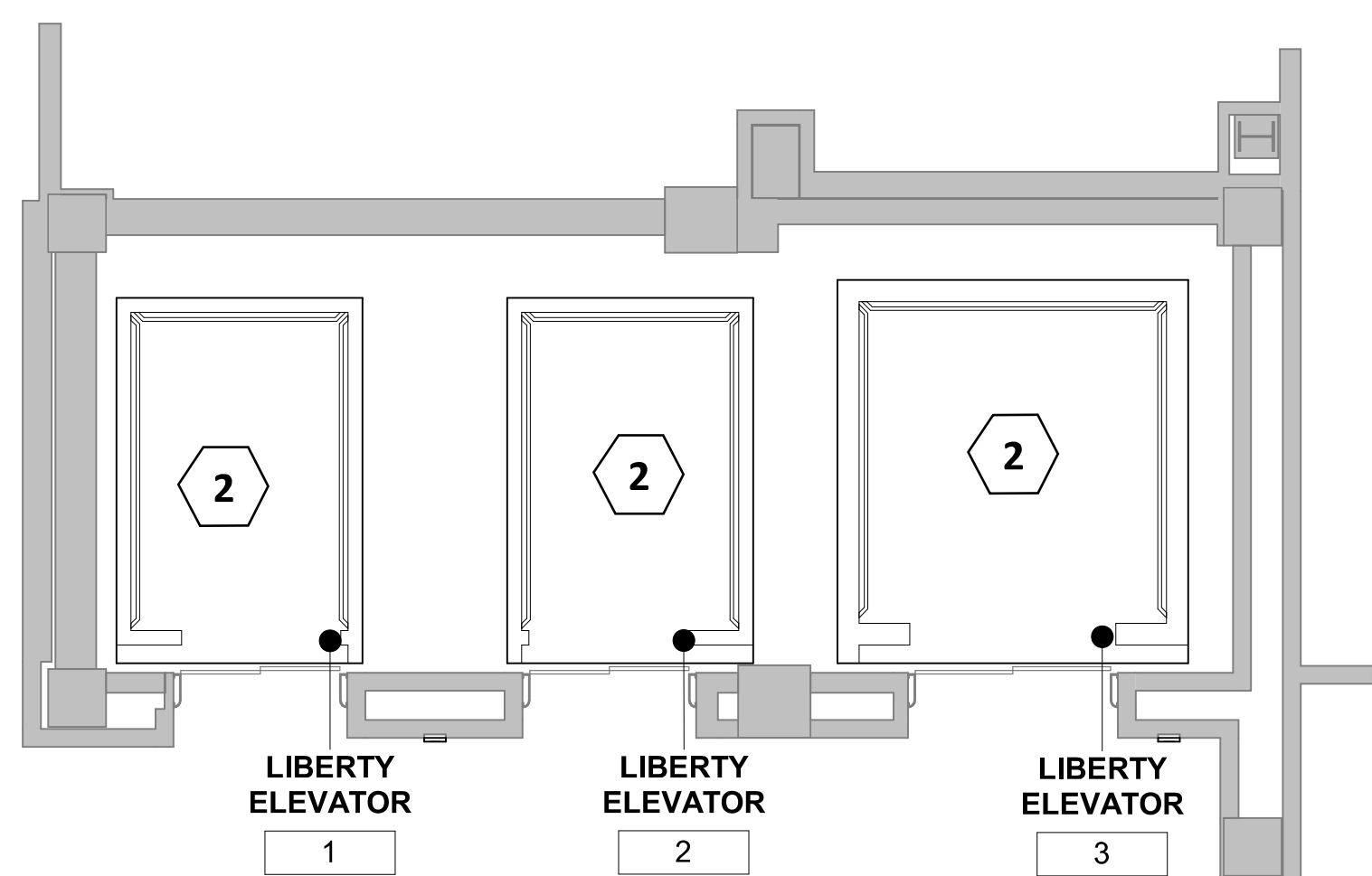


GENERAL NOTES

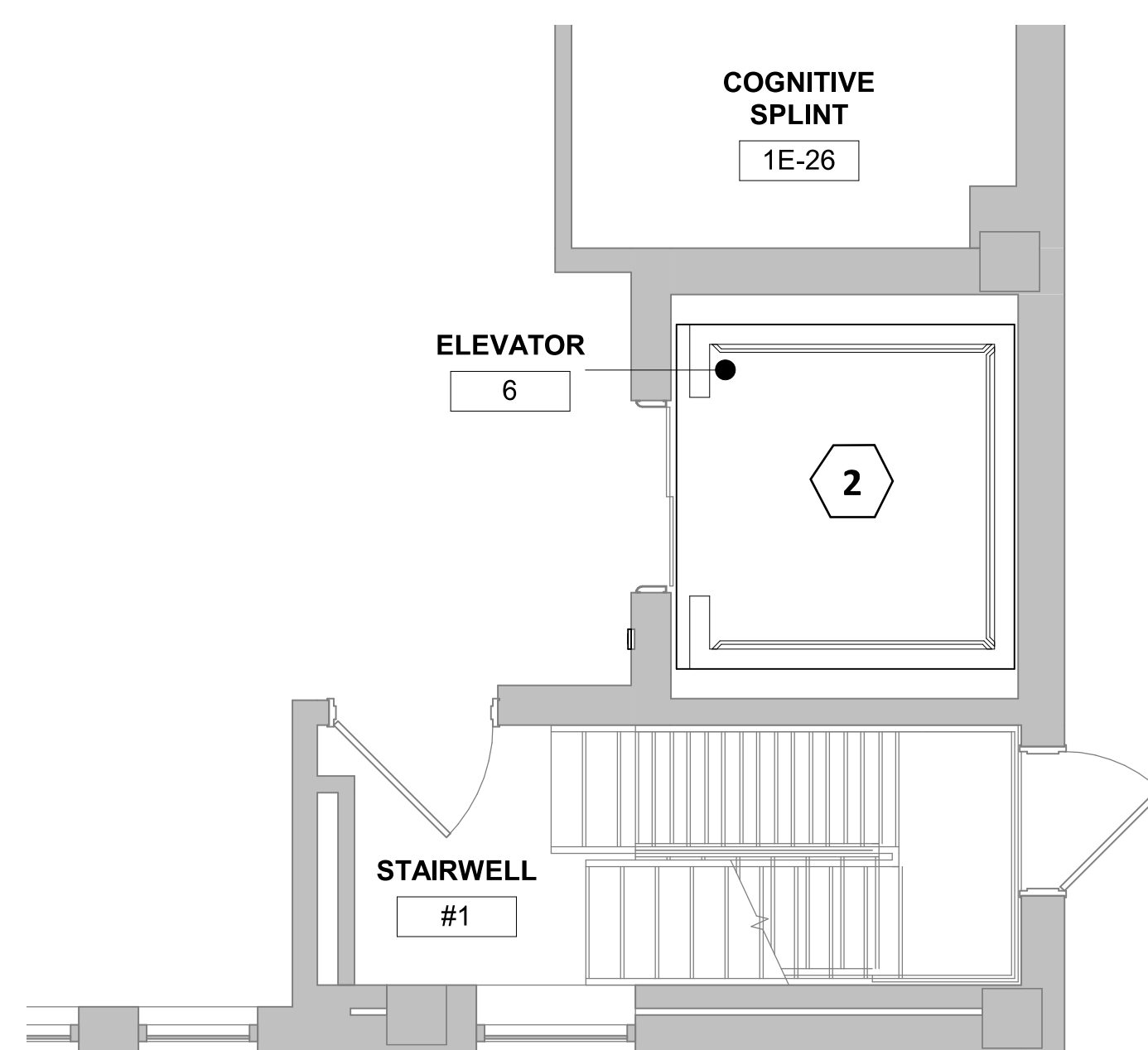
1. REMOVE CAP/PLUG AS NECESSARY AND CONNECT NEW SPRINKLER TO EXISTING SUPPLY PIPING.
2. WHEN REQUIRED SPRINKLER TO BE WITHIN 2FT OF BOTTOM OF PIT PER NFPA 13 (ELEVATORS 10 + 12 ARE HYDRALUIC ELEVATORS).
3. COORDINATE ALL SHUT DOWNS WITH GENERAL CONTRACTOR AND OWNER'S REPRESENTATIVE.

KEYNOTES

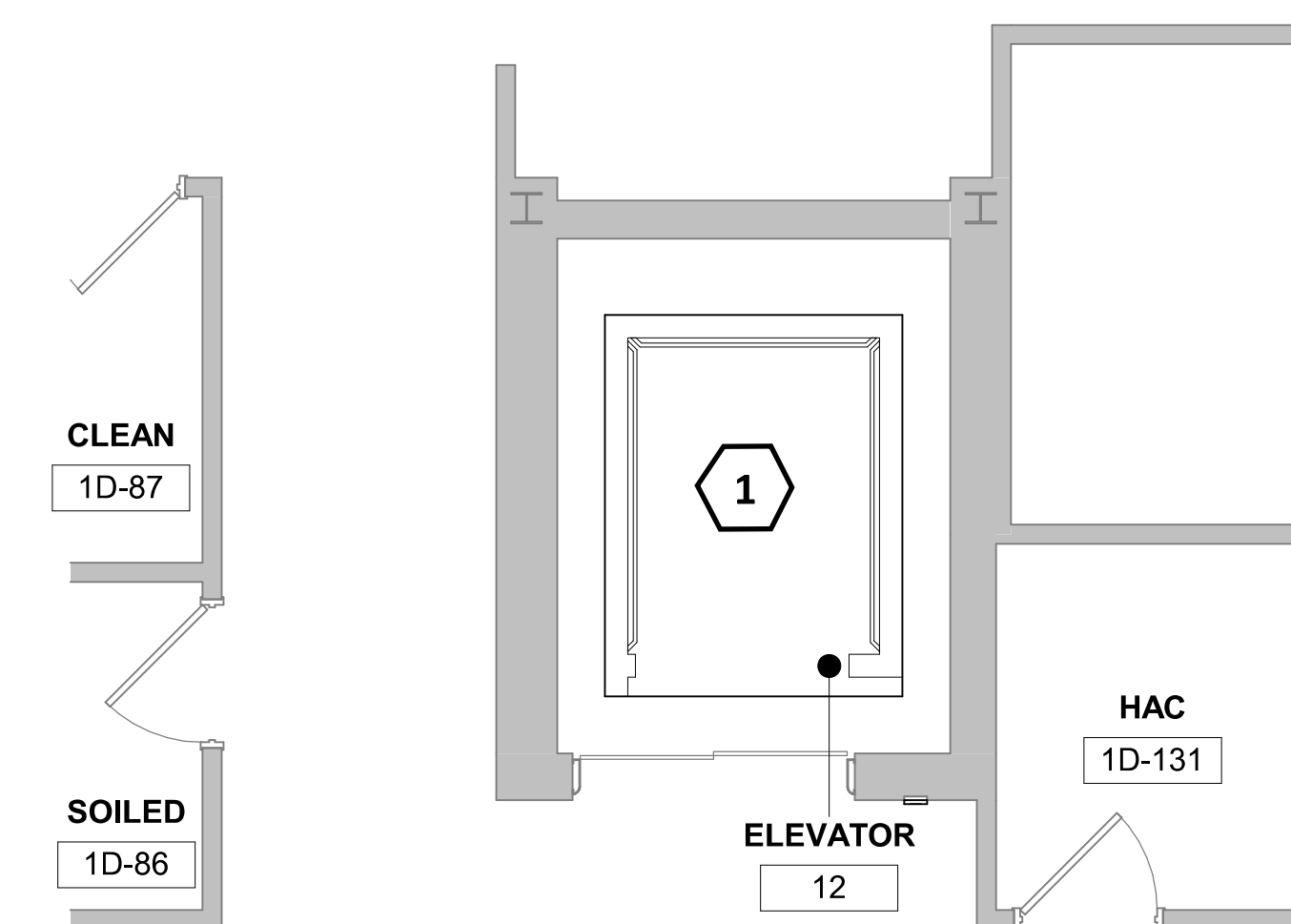
- 1 PROVIDE NEW SIDEWALL SPRINKLER IN ELEVATOR PIT. CONNECT TO EXISTING SUPPLY PIPING. ONE SPRINKLER PER PIT.
- 2 NO SPRINKLER PROTECTION REQUIRED AT TOP OF TRACTION ELEVATOR SHAFT/MACHINE ROOM



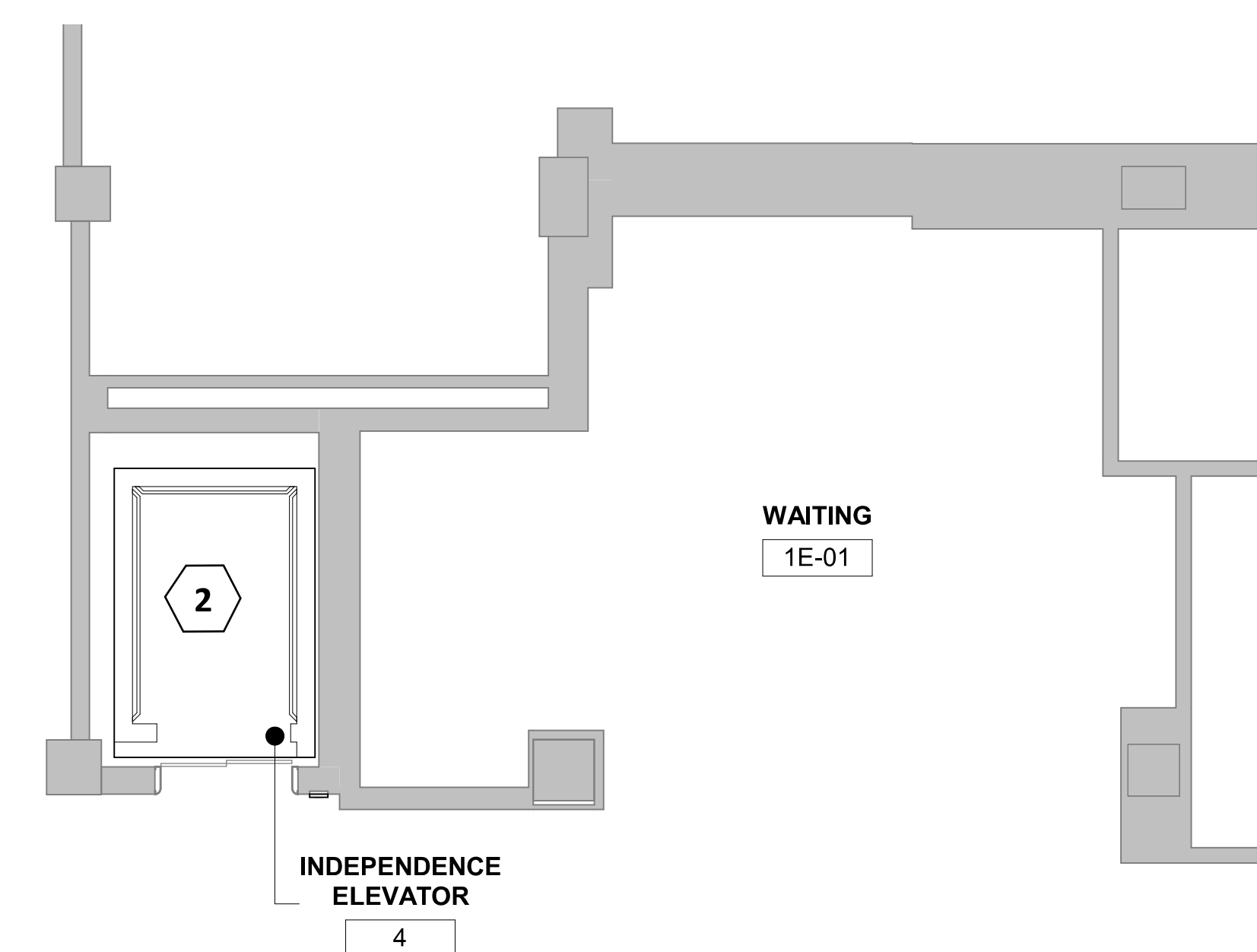
1 FLOOR PLAN - LIBERTY 1,2,3 - TYPICAL
1/4" = 1'-0"



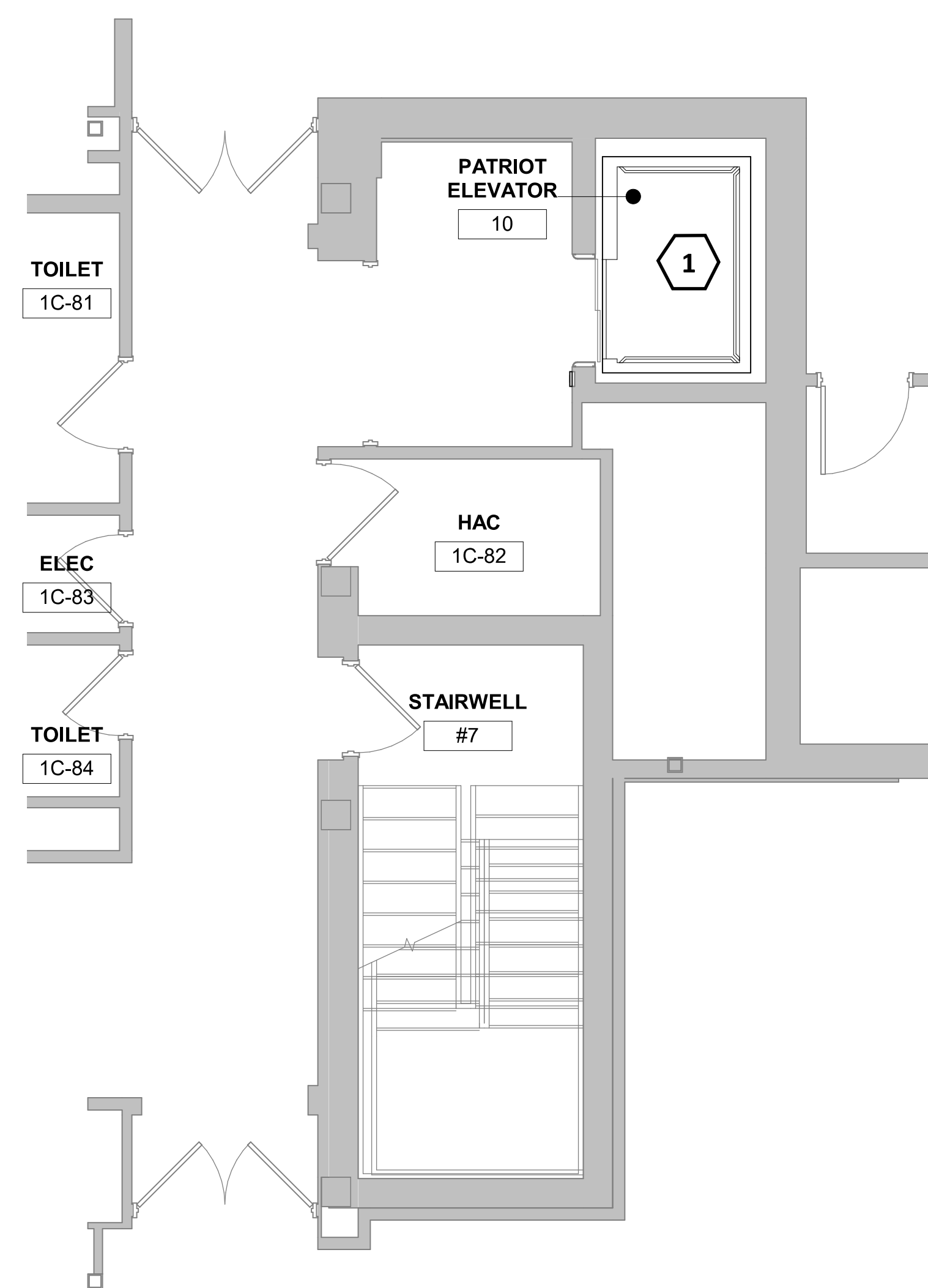
4 FLOOR PLAN - ELEVATOR 6 - TYPICAL
1/4" = 1'-0"



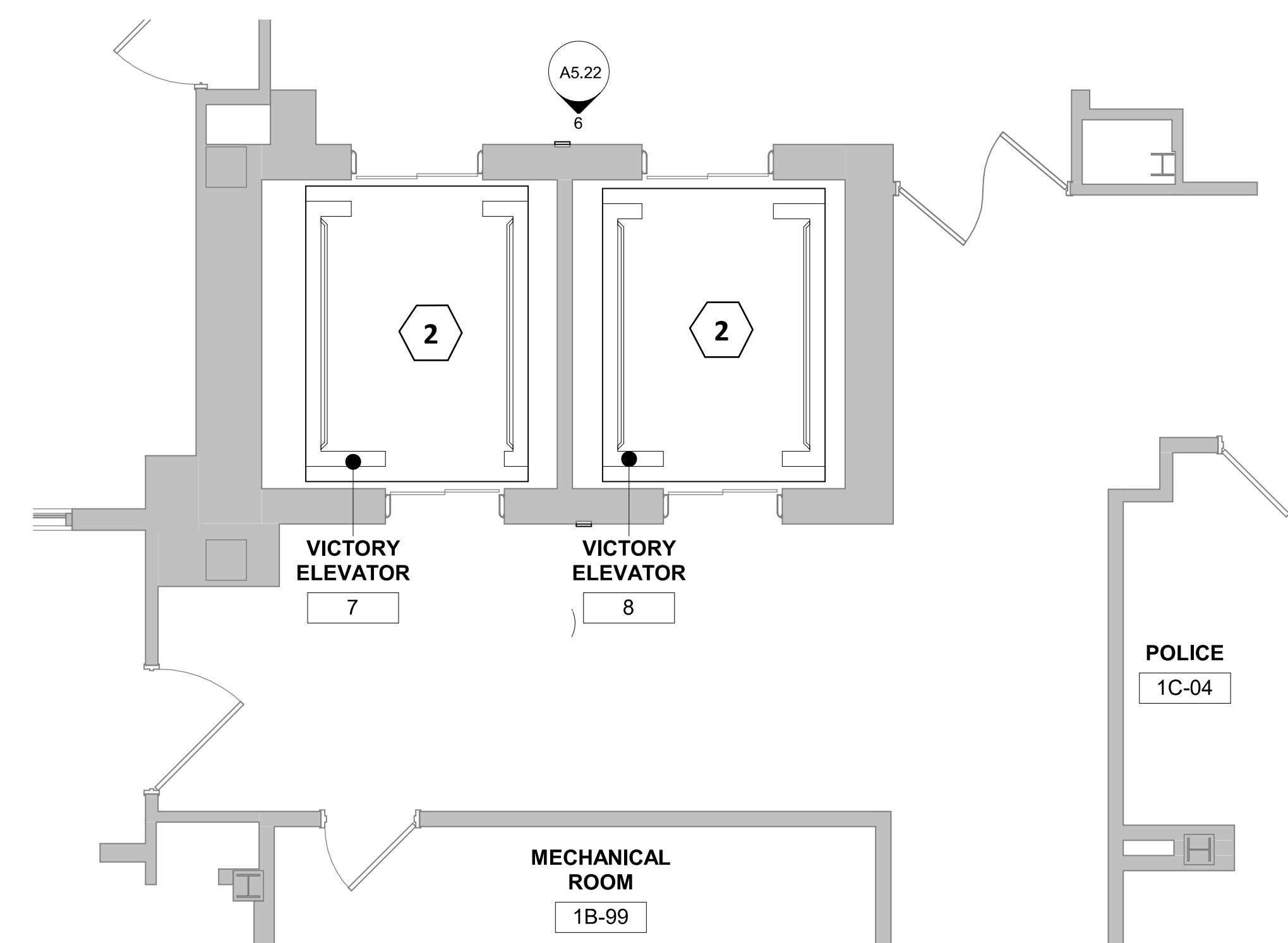
8 FLOOR PLAN - ELEVATOR 12 - TYPICAL
1/4" = 1'-0"



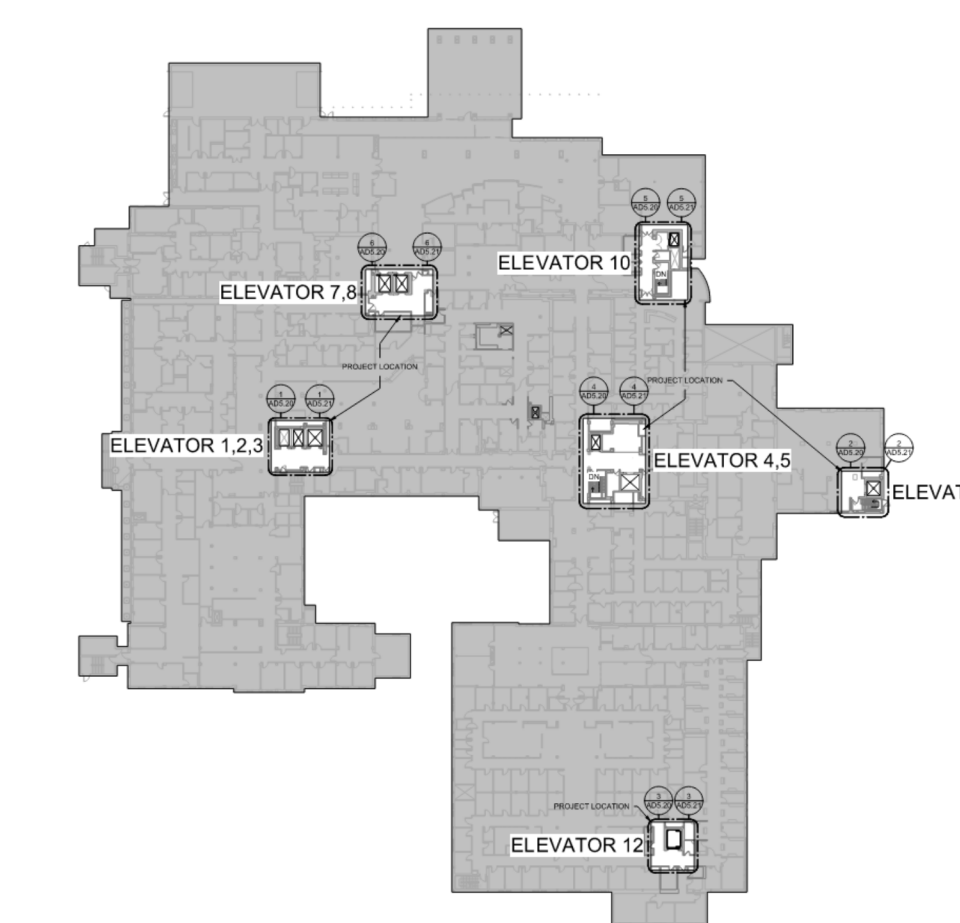
5 FLOOR PLAN - INDEPENDENCE 4,5 - TYPICAL
1/4" = 1'-0"



6 FLOOR PLAN - PATRIOT ELEVATOR 10 - TYPICAL
1/4" = 1'-0"



7 FLOOR PLAN - VICTORY ELEVATOR 7,8 - TYPICAL
1/4" = 1'-0"



KEYPLAN

CONSULTANTS:

SUMMIT
FIRE PROTECTION
SUMMIT FIRE CONSULTING
575 MINNEHAHA AVE WEST
ST. PAUL, MINNESOTA 55103
(612) 387-7050



ARCHITECT/ENGINEERS

FOURFRONT
DESIGN INC.
FOURFRONT DESIGN, INC.
517 7TH STREET
RAPID CITY, SOUTH DAKOTA 57701
PH: (605) 342-9470
FAX: (605) 342-2377
WWW.FOURFRONTDESIGN.COM

Drawing Title
FIRE PROTECTION 1

Approved: Project Director
Owner

Project Title
REFURBISH ELEVATORS AND REPLACE CONTROLS

Location
**2101 ELM STREET
FARGO, ND 58102**

Date
12.20.22

Checked
MAS

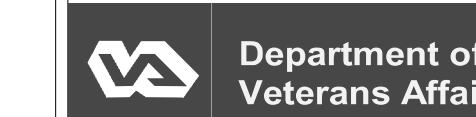
Drawn
NB

Project Number
437-22-101
Building Number

Drawing Number
F5.20

Dwg. of

Office of
Construction
and Facilities
Management

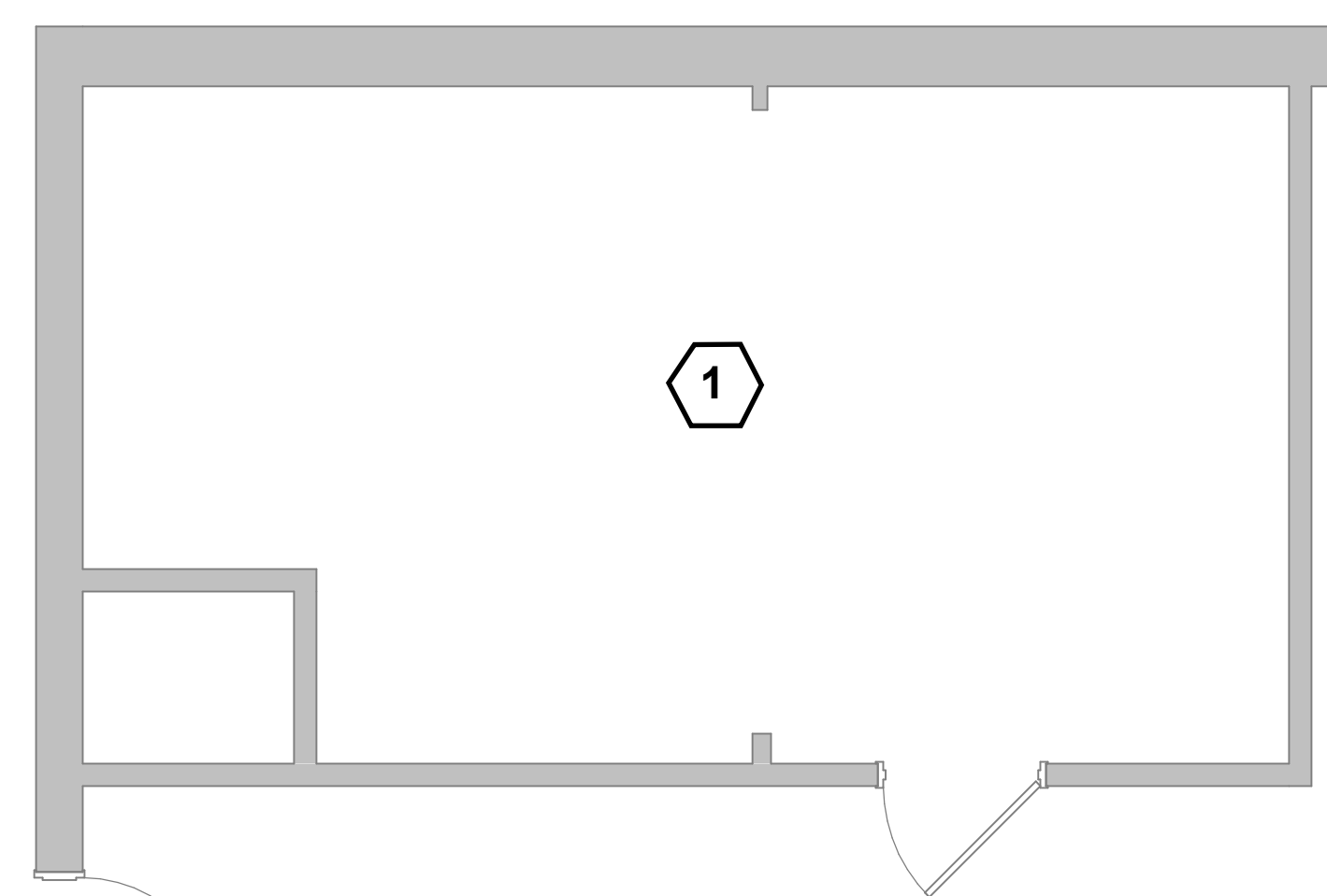


GENERAL NOTES

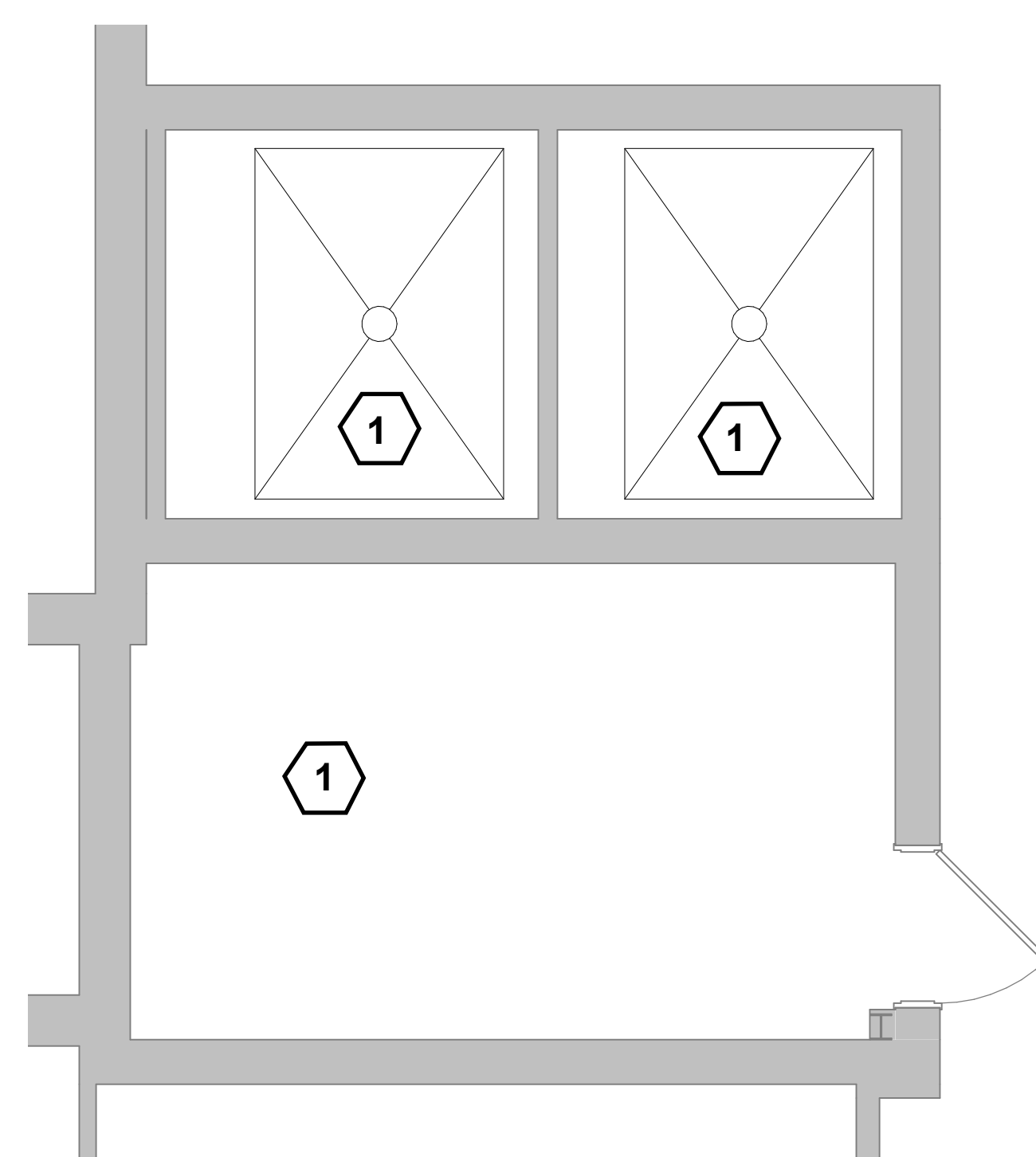
1. NO WORK IN PENTHOUSE OR TOP OF ELEVATOR SHAFT

KEYNOTES

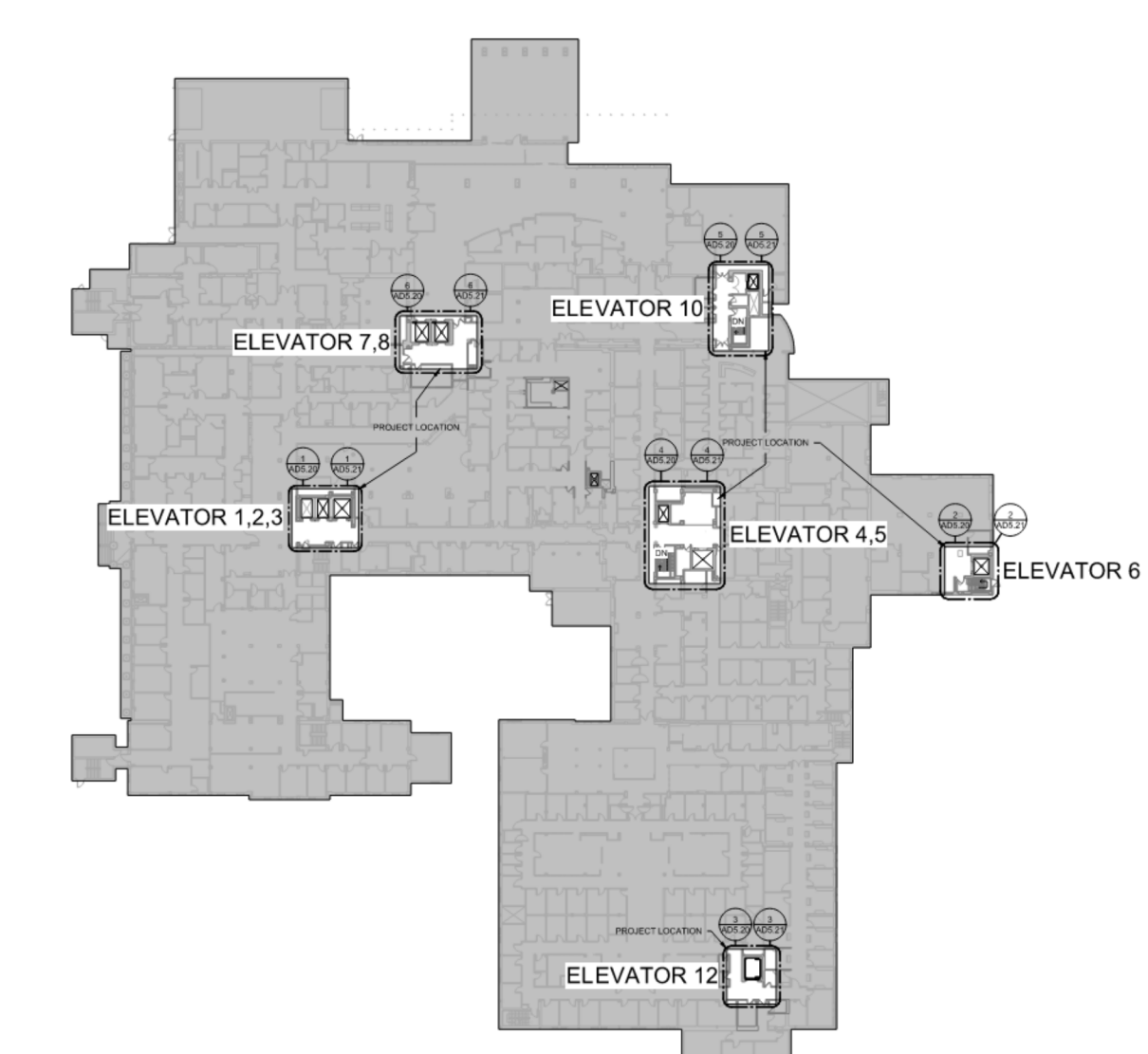
1 NO SPRINKLER PROTECTION REQUIRED AT TOP OF TRACTION ELEVATOR SHAFT/MACHINE ROOM



1 FLOOR PLAN - LIBERTY 1,2,3 PENTHOUSE - TYPICAL
1/4" = 1'-0"

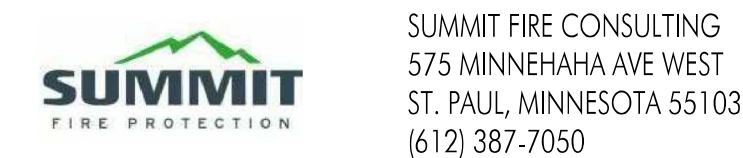


2 FLOOR PLAN - VICTORY ELEVATOR 7,8 PENTHOUSE - TYPICAL
1/4" = 1'-0"



KEYPLAN

CONSULTANTS:



ARCHITECT/ENGINEERS



Drawing Title
FIRE PROTECTION 2

Approved: Project Director
Owner

Project Title
REFURBISH ELEVATORS AND REPLACE CONTROLS

Location
**2101 ELM STREET
FARGO, ND 58102**

Date
12.20.22

Checked
MAS

Drawn
NB

Project Number
437-22-101

Drawing Number
F5.21

Dwg. of

Office of
Construction
and Facilities
Management

