

Royal C. Johnson Veterans Memorial Hospital

Sioux Falls VA Health Care System



INTERIOR FINISH MATERIALS

BASIS OF DESIGN

DOCUMENT

NOTE: These selections are not mandatory.  
Approved equals are available for all selections.  
VA approval for substitutions is required.

---

Last Revision July 27, 2022

### CPT-1 CARPET TILE

#### ICU waiting room, 328-5

Manufacturer: Philadelphia Commercial (or approved equal)

Size: 24" x 24" Modular

Install: Boxed In Style:

Shifting Gears 54811

Color: Wedge 00400

Fiber: Eco Solution Q® Nylon Dye Method: 100% Solution Dyed Backing:

EcoWorx® tile

Tufted Weight: 13

<http://www.phillyqueencommercial.com/ProductSpec/ShowFullSpec/54811/00400>



### LVT- 1 Luxury Vinyl Tile

#### For use in elevator corridor 394A-5

Manufacturer: Tandus Centiva / Tarkett - commercial luxury vinyl tile

(or approved equal)

Item #: VS 7214-U

Style: Venue Stone UVS

Color: Luna 7214

Dimensions: 18"x18"

Installation: Unidirectional (same direction)

Square Edge

Standard Emboss

Wear Layer: 20 mil

Product thickness: 3.0mm (.120")

[https://commercial.tarkett.com/en\\_US/collection-C000756-venue/venue-stone-uv-s-luna-7214](https://commercial.tarkett.com/en_US/collection-C000756-venue/venue-stone-uv-s-luna-7214)



### WSF-1 RESILIENT SHEET

#### ENDO—entire space

Manufacturer: Mannington Commercial (or approved equal)

Product: biospec MD Homogenous Sheet Color: Ecu 15362 Size: 6' 6" (2 meter) width

Installation method: Heat welding, integral base 6" up wall with s/s trim cap Welds: For Ecu—Camouflage weld rod #415162

Warranty: Limited 12 year commercial warranty

<https://www.manningtoncommercial.com/products/hard-surface/homogeneous/biospec-md/>



Ecu  
15362

### WSF-2 Welded Seam Sheet Flooring

ICU, patient rooms (except toilet areas) and corridors/nurse's station Manufacturer: Ecore (or approved equal)

Product: Cosmos Rx Color: Halo

9841

Roll dimensions: 6' wide

Product thickness: 5.0mm-7.0mm Rubber

back sheet vinyl <http://www.ecorecommercial.com/Products/Rx>

[/Cosmos-Rx](#)



**RB-1 RESILIENT BASE**

**ICU**

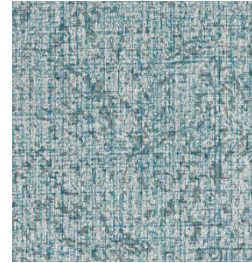
Manufacturer: Johnsonite (or approved equal) Color: # 32  
Pebble Material: 700 series - thermoplastic rubber/vinyl blend  
Product: 4" High - Coved Base  
Thicknesses: 1/8" (3.2mm)  
Use premanufactured inside and outside corners



**VWC-1 Vinyl Wallcovering**

**ICU waiting room—above Rigid Vinyl Wall protection**

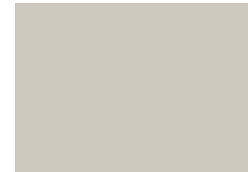
Manufacturer: J Josephson (or approved equal)  
Collection: Tower Pattern  
Name: Batiste  
Color: Crystal Waters  
Pattern #: T2-BA-16 Type: Type II Weight: 20 oz per linearyard Backing: Fire  
Rating: ASTM E84 - Class A Installation: Reverse Hang / Random Match



**P-1 Interior Paint General**

**wall paint (semi-gloss finish) Manufacturer:**

Diamond Vogel (or approved equal)  
Color: Hidden Cove # 0210  
Formula: Zero Plus 0 VOC Interior Latex Semi-Gloss Application:  
Rolled



**P-2 Interior Paint**

**Door Frames, metal steam vent covers (semi-gloss finish) Manufacturer:**

Sherwin Williams (or approved equal)  
Color: DV Drifting Sand # 0218  
Formula: Pro Industrial semi-gloss B66W 651



**P-7 Interior Paint**

**ICU Patient Rooms (semi-gloss finish)**

Manufacturer: Diamond Vogel (approved equal)  
Color: Restful Retreat 0497  
Formula: Zero Plus 0 VOC Interior Latex Semi-Gloss Application: Rolled



## **S-1 SOLID SURFACE**

### **Window sills**

Manufacturer: LG HI-MACS® (or approved equal)

Material: Acrylic Solid Surface

Color / Pattern: Pantheon M 322 Thickness: 5/8" or 16 mm Sills: Router edge on front and no overhang on length or depth



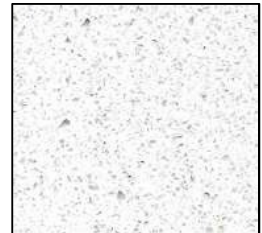
## **S-2 SOLID SURFACE**

### **Counter tops—work station shall have grommets for electrical cords**

Manufacturer: LG HI-MACS® (or approved equal)

Material: Acrylic Solid Surface

Color / Pattern: Milky Way T 009 Thickness: 1.25" or 32 mm



## **CORNER GUARDS**

### **For most all corners**

Manufacturer: Pawling (or approved equal)

Material: Stainless Steel, #4 Satin

Type: CG-51-8 (8' high for full corners); CG-51-4 (4' length for arched areas on 1<sup>st</sup> floor)

Measurement: 2" wide x 0.059" thickness Type: Includes Adhesive

Install Height: Floor—above wall base to ceiling (verify ceiling height to provide size avail)

[https://www.grainger.com/product/PAWLING-CORP-Corner-Grd- 34AR47?searchBar=true&searchQuery=34AR4](https://www.grainger.com/product/PAWLING-CORP-Corner-Grd-34AR47?searchBar=true&searchQuery=34AR4)



## **CRASH GUARD**

### **For corridors**

Manufacturer: InPro (or approved equal)

Material: Nu Tree Heavy Duty Wall Guard Color: Weather Wood Product: NT-140

Height: 8" Thickness: 1/2"

Installation: Install 6" above finished floor; Mechanically fasten to walls per installation guide; cap hc matching weather wood to cover fasteners



<https://inprocorp.com/ipc-door-wall-protection/wall-guards/nutree-series>

## HANDRAILS

### Corridors

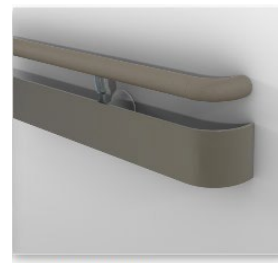
Manufacturer: Inpro (or approved equal)

Series: 3510VV Top Vinyl: Barrel Oak (5E048)

Bottom Vinyl: Barrel Oak (5E048)

Corner returns on handrail: Stainless steel Corner returns  
on bumper: Barrel Oak Texture: Velvet

Installation: Top of handrail 36" from floor



3510 Round Handrail



**Equivalent: CS PRAAN in Chameleon wood grain CS Fossil Teak for both components (wood grain end caps)**

## RWPI RIGID VINYL WALL PROTECTION

### ENDO

Manufacturer: Inpro (or approved equal)

Material: Aspex Printed Rigid PETG Wall Protection

Style#: Standard Pattern-Prairie

Color: Blue Grey A0 23

Thickness: .040

Texture: Velvet

Dimensions: 4' x 8' sheets Install

Height: From finished floor to ceiling

Wall Installation: From floor to 48" high; Trim top of RWP with vinyl top cap (style 407), use vertical dividers (style 408) and inside corners (style 409) in color recommended by manufacturer for best match. Color Match Caulk color to be manufacturer recommended for best match.

Paint above the wall protection: to match SW Hidden Cove



## RWP2 PRINTED WALL PROTECTION

For ICU corridor beginning at double-doors from Med/Surg to double doors at ICU unit (Reeds & Wetlands) & from double doors inside unit to end of corridor(Haybale at Sunset)

Manufacturer: InPro (or approved equal)

Material: Aspex Printed Wall Protection—Custom

Installation: from floor to ceiling

Note: VA to provide images through Getty Images for production of custom digital wall protection Reeds & Wetlands at

Sunrise: 1013751608

Hay Bale at the Sunset: 1163094083



## RWP3 RIGID VINYL WALL PROTECTION

Wall protection in ICU patient rooms & waiting room

Manufacturer: Inpro (or approved equal)

Material: Palladium Rigid Vinyl Wall Protection

Style#: 406 Color: #02 52 Bur lap Thickness: .060 Texture:

Velvet Dimensions: 4' x 8' sheets

Install Height: ~39" AFF; top trim to be 40" from finished floor CS Acrovyn

equivalent is Beige #103

Column Installation: Butt joints 1/16" then use color match caulk on seams; trim top with Horizontal Top Cap Boards.

<https://easternus.azureedge.net/~media/Inpro/TDM%20Files/Documents/P/a/1/1/a/Palladium%20SRV%20Brailinstall461REV18pdf.ashx?modified=20171207161550>



## RWP4 RIGID VINYL WALL PROTECTION

### OR elevator corridor 394A-5

Manufacturer: Inpro (or approved equal)

Material: Palladium Rigid Vinyl Wall Protection

Style#: 406      Color: #0237 Slate Thickness: .060 Texture:

Velvet      Dimensions: 4' x 8' sheets

Install Height: 48" AFF

Installation: Butt joints 1/16" then use color match caulk on seams; trim top of RWP with top cap 407 color to match; inside corners to use piece 409 color to match. Vertical seams caulk to match.



407  
TOP CAP



409  
INSIDE  
CORNER

## HORIZONTAL TOP CAP BOARD 1

### Top edge trim board at Rigid Vinyl Wall Protection for

Manufacturer: Inpro (or approved equal)

Material: Palladium 3-D Horizontal Top Cap Board Part: P-3DHTC2

Color: Burlap #0252      Dimensions: 1/2" thick x 2" H (wide) x 8' length

<https://inprocorp.com/ipc-door-wall-protection/wall-panels/3d-wall-panels#color-samples>



## INTERIOR DOORS

Manufacturer: Acrovyn – impact resistant doors (or approved equal)

Model Number: SCL5-NR

Match existing size to current frame; use existing hardware

Color: Fossil Teak #1352 for ENDO (4<sup>th</sup> floor)

Amber Cherry #373 for ICU (3<sup>rd</sup> floor)



## **PRIVACY CURTAINS**

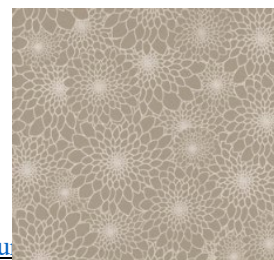
For privacy curtains for patient rooms

Manufacturer: InPro/Clickze (or approved equal)

Style: EZE-Swap Color: Driftwood

Pattern: Daisy Size: 66"x 66" Snap Panel Qty: 420

<https://inprocorp.com/clickeze-privacy-systems/cubicle-curtains/eze-swap-curtains/eze-swap-cubicle-curtains>



## **PRIVACY CURTAIN MESH PANELS**

For privacy curtains for patient rooms

Manufacturer: InPro/Clickze (or approved equal)

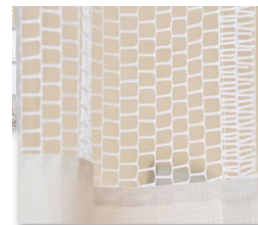
Dimensions: 20" high Sizes: Varying lengths to fit installed tracks (66", 124", 184", 224")

Color: White

Specifications: 50# mesh (.50" mesh size)

NOTE: To meet Fire Safety compliance the track and hooks add 3" to mesh (20") and meet both the 18" and 21" compliance measures.

<https://inprocorp.com/clickeze-privacy-systems/cubicle-curtains/accessories/cubicle-curtain-mesh>



Cubicle Curtain Mesh

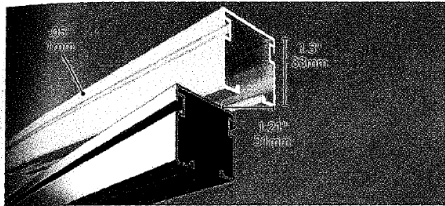


## PRIVACY CURTAIN TRACKS

For use in patient rooms

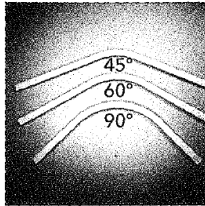
Manufacturer: InPro (or approved equal) Style:

Our Ultra Cube® Cubicle Curtain Track comes with a variety of patented accessories, making it extremely versatile and IV compatible. Ultra Cube is manufactured from extruded aluminum to provide heavy duty strength and a long-lasting cubicle track system.



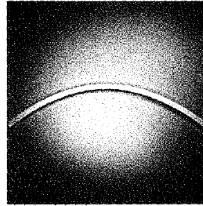
**Ultra Cube® Track**

CE800007(-AN)\* - 7ft. (2.13m)  
CE800008(-AN)\* - 8ft. (2.44m)  
CE800009(-AN)\* - 9ft. (2.74m)  
CE800012(-AN)\* - 12ft. (3.66m)  
CE800016(-AN)\* - 16ft. (4.88m)



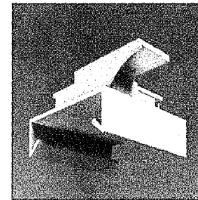
**Factory Bends**

Available bends: 45°, 60° & 90°.  
Custom angles available.  
CE8042(-AN)\* - 45°, 2x2' (610mmx610mm)  
CE8043(-AN)\* - 45°, 3x3' (914mmx914mm)  
CE8062(-AN)\* - 60°, 2x2' (610mmx610mm)  
CE8092(-AN)\* - 90°, 2x2' (610mmx610mm)  
CE8093(-AN)\* - 90°, 3x3' (914mmx914mm)  
CE8094(-AN)\* - 90°, 4x4' (122mx122m)



**Radius Bend**

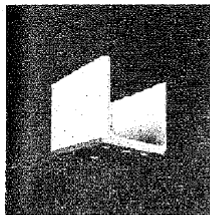
CE80954(-AN)\* 54" (1.37m)  
Radius Bend (shown)  
Size: 7' (2.13m) L  
Custom bends available.



**Regular Grid Clips**

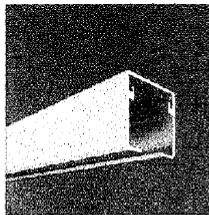
CE9271 - Regular Grid Clip (Shown)  
Allows for quick and easy installation of track to T-bar grid without hardware. For use with 15/16" grid. U.S. Patent 6,409,415 B1

CE9273 - Regular Swivel Clip  
Used on bends only. (1 swivel clip per bend) For use with 15/16" grid. U.S. Patent 6,409,415 B1



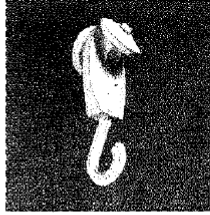
**End Caps**

CE9080(-AN)\* - Plastic End Cap (shown)  
CE9100(-AN)\* - Plastic End Cap with hook option  
CE9080M(-AN)\* Metal End Cap  
Available in white or gray.



**Aluminum Splice**

CE8051(-AN)\*  
Connects two sections of track together for a smooth transition. Available in white or gray.



**Solid Hook Carrier**

CE9025  
Peak load, lb(f): 52.3 (24.2kg(f))  
Carrier Height: 2 3/8" (60.33mm)  
Wheel Height: 9/8" (15.88mm)



**Ball + Chain Carrier**

CE9038  
Peak load, lb(f): 52.3 (23.7kg(f))  
Carrier Height: 4" (102mm)  
Wheel Height: 5/8" (15.88mm)

## WINDOW COVERING 1 (BLACK OUT SHADES)

For use in patient rooms

Manufacturer: Inpro (or approved equal)

Item: Custom Printed Shades

Style: Blackout Fabric, no side rails or fascia Color: Flower

Field Sun 54113

Type: Clutch shade with bead loop, open roll



Flower Field Sun 54113.jpg

## **WINDOW COVERING 2 (SOLAR SHADES)**

**For use in waiting rooms, nurse's stations**

Manufacturer: Insolroll (or approved equal)

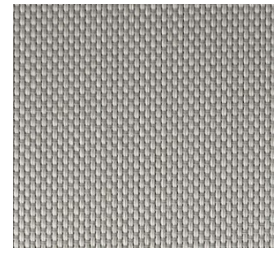
Material: 24% Polyester, 76% PVC

Style: Sierra Solar Screen Fabric Color:

Beige/Grey

Density: 1%

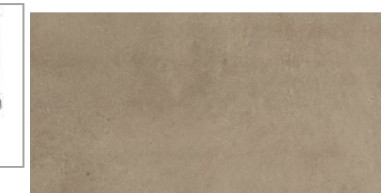
Type: Clutch shade with bead loop



## **BRONZE UNIVERSAL CHAIN GUIDE FOR SHADES**



## **BRONZE BEAD LOOP FOR SHADES**



## **PT-1 Porcelain Tile Floor and Base**

**For toilet room floors**

Manufacturer: Daltile/US (or approved equal)

Product: Porcelain

Tile Pattern: Portfolio

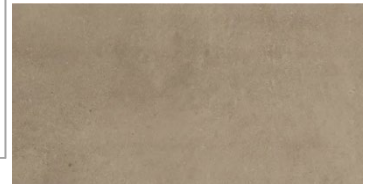
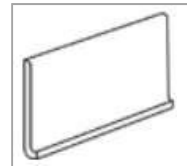
Color: Noce PF11

Floor Tile Size: 12" x 24" Matte, straight joint

Trim: 6" high coved base / overall size 6" x 12" Grout

Grout Color: to match TEC 925 Sable Max Grout

joint: 3/16"



## **PT-2 Porcelain Tile Wall**

**For toilet room walls---floor to ceiling**

Manufacturer: Daltile/US (or approved equal)

Product: Colorbody porcelain

Pattern: Articulo

Color: AR-09 Column Grey

Wall Tile Size: 6" x 18" Matte rectangle- installed with horizontal orientation

Grout Color: to match TEC 939 Mist Max Grout

joint: 3/16"

Installation: PT-2 above cove base to about 42" from floor tile, PT-3 Museo 12x24's installed vertically to finish about 65" from floor, continue with PT-2 to ceiling.



### PT-3 Porcelain Tile Wall Accent

For toilet room walls-Install PT-3 approximately 36" AFF

Manufacturer: Daltile/US (or approved equal)

Product: Colorbody Porcelain

Pattern: Museo

Color: Grey Mix MU37

Finish: Matte Size: 12"x24"

Grout Color: to match TEC 939 Mist

Installation: Vertically; PT-2 above cove base to about 42" from floor tile, PT-2 Museo 12x24's installed vertically to finish about 65" from floor, continue with PT-2 to ceiling.



### PLASTIC LAMINATE 1

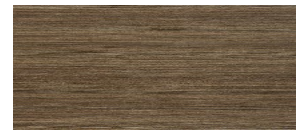
Vertical casework

Manufacturer: Wilsonart (or approved equal)

Item: 7960K-18

Color: Studio Teak

Finish: Linearity Finish w/ Aeon



Matches OFS Carolina Pecan, Acrovyn Fossil Teak, Inpro Barrel Oak, Midmark Storm

### PLASTIC LAMINATE 2

Vertical casework

Manufacturer: Formica (or approved equal)

Item: 8826

Color: Neutral Twill

Finish: Matte



### AT-1 ACOUSTICAL CEILING TILES

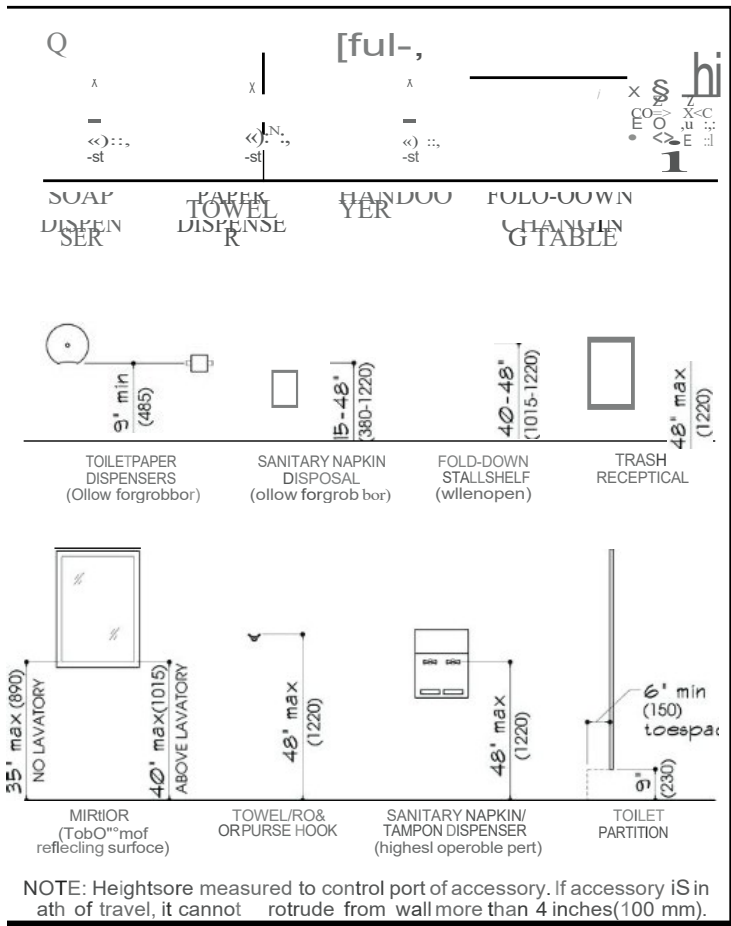
Manufacturer: Armstrong (or approved equal)

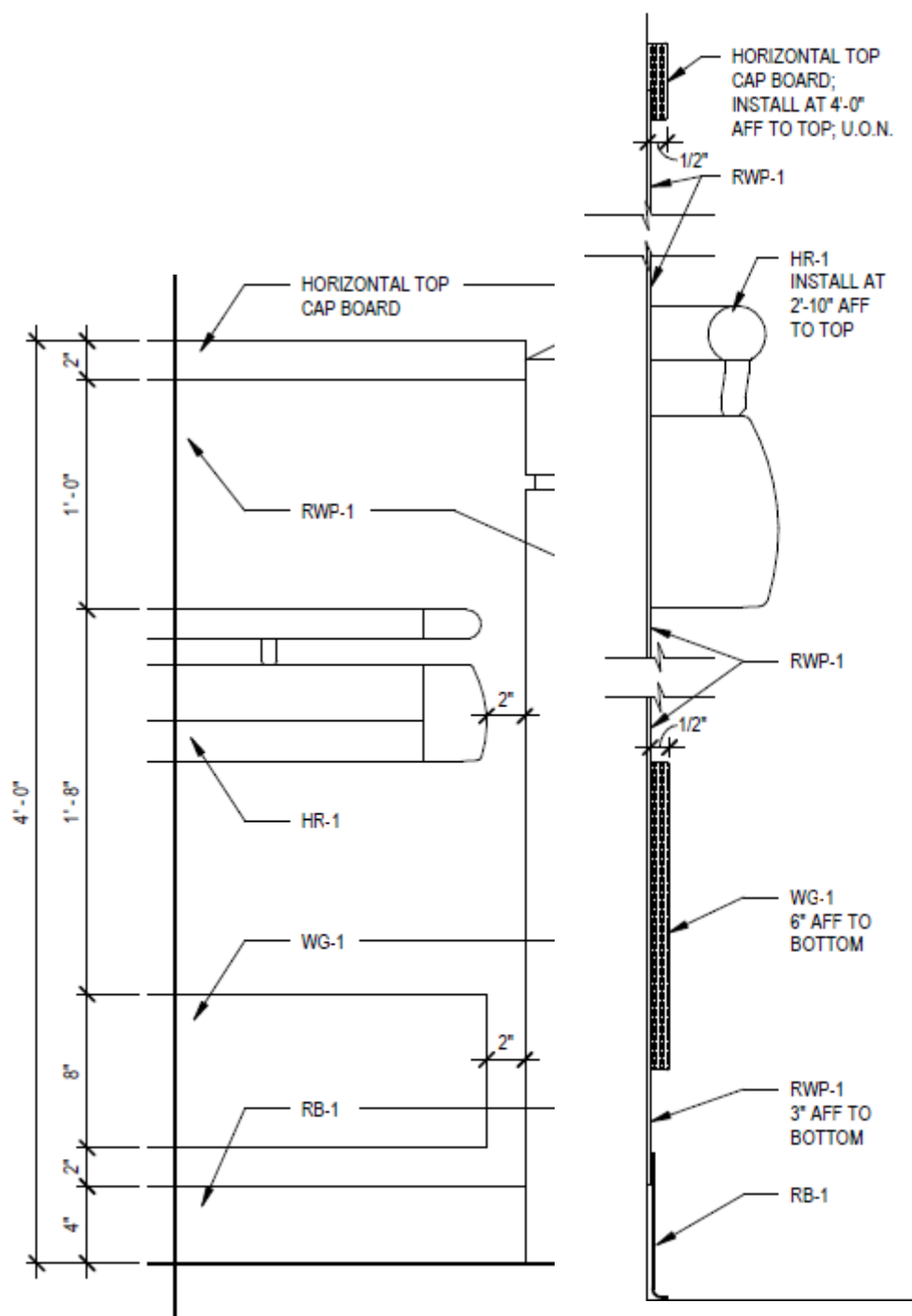
Style: Cortega - Angled Tegalur Item: 704

Size: 2'x 2' x 5/8" Color: White Rating: Class A



<https://www.armstrongceilings.com/commercial/en-us/commercial-ceilings-walls/cortega-lay-in-ceiling-tiles/item/704.html>





Detail rubber base, crash rail, wall protection, handrail, and top cap.