[illegible]

CONSULTANTS

STRUCTURAL:

Professional
Engineers
and
Architects

Albertson Engineering Inc.

Albertson Engineering, Inc.
3302 W. Main St. #C
Rapid City, South Dakota 57702
Phone: 605-343-9606

**MECHANICAL / ELECTRICAL /
PLUMBING:**

Professional
Engineers
and
Architects

WPE
WEST PLAINS
ENGINEERING, INC.

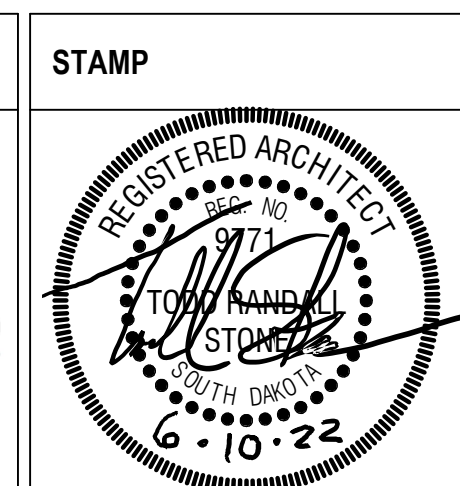
West Plains Engineering, Inc.
1750 Rand Road
Rapid City, South Dakota 57702
Phone: 605-348-7455

ARCHITECT OF RECORD

A/E:

STONE GROUP ARCHITECTS, INC.
 600 EAST 7TH ST
 SIOUX FALLS, SD 57104
 605.271.1144
 TODD STONE, AIA





Office of
Construction
and Facilities
Management

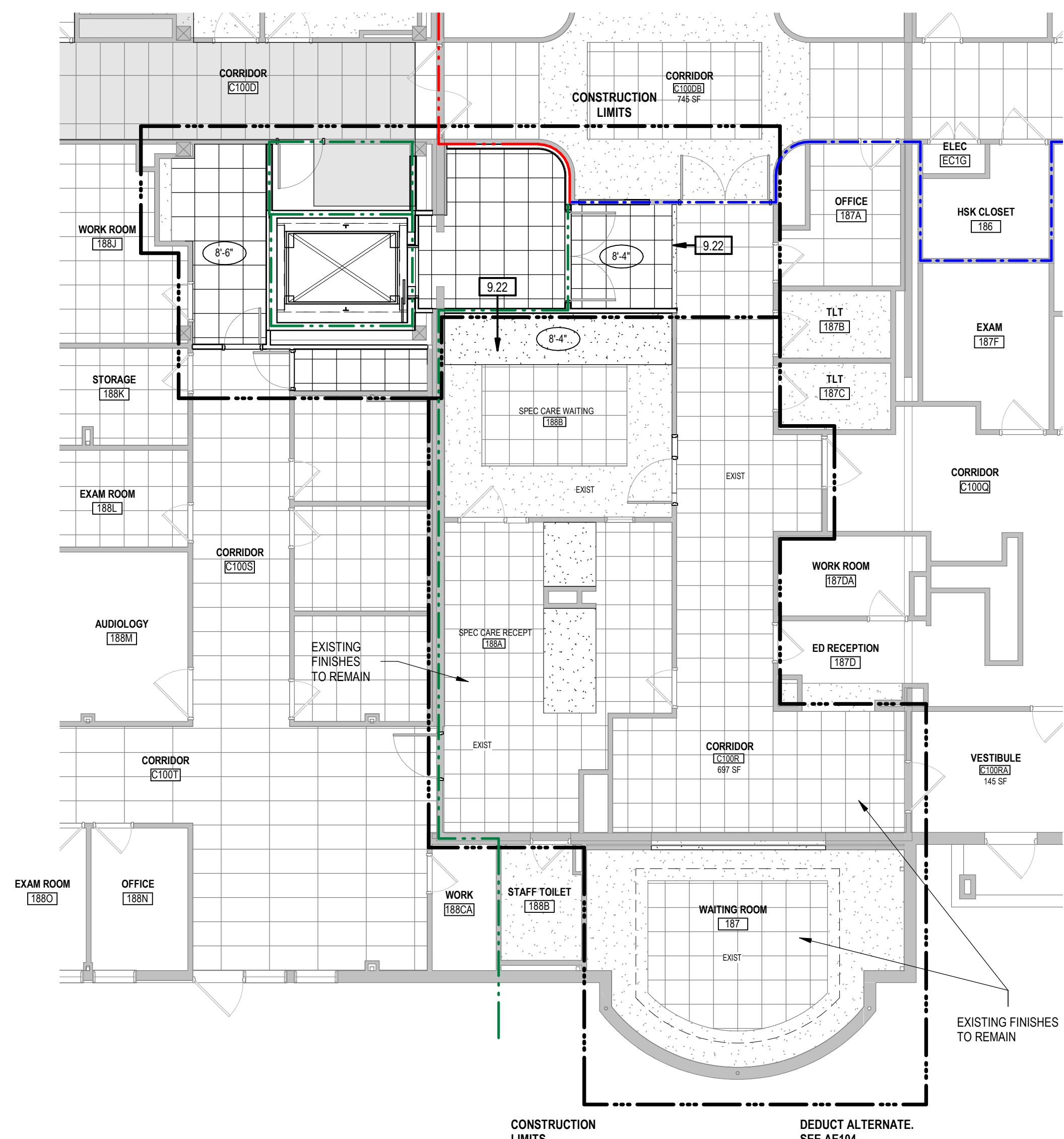
VA | U.S. Department
of Veterans Affairs

Drawing Title	OVERALL FLOOR PLANS
Approved:	

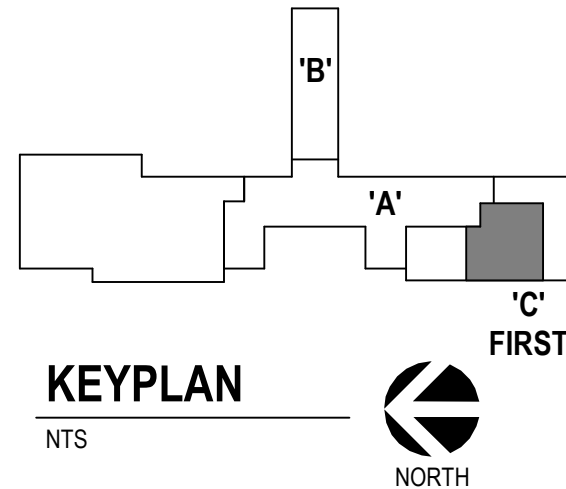
Phase	CONSTRUCTION DOCUMENTS
	FULLY SPRINKLERED

Project Title		
RENOVATE AND CONSOLIDATE INPATIENT FUNCTIONS		
Location		
FORT MEADE, SOUTH DAKOTA		
Issue Date	Checked	Drawn
06/10/2022	TS	JN/JH

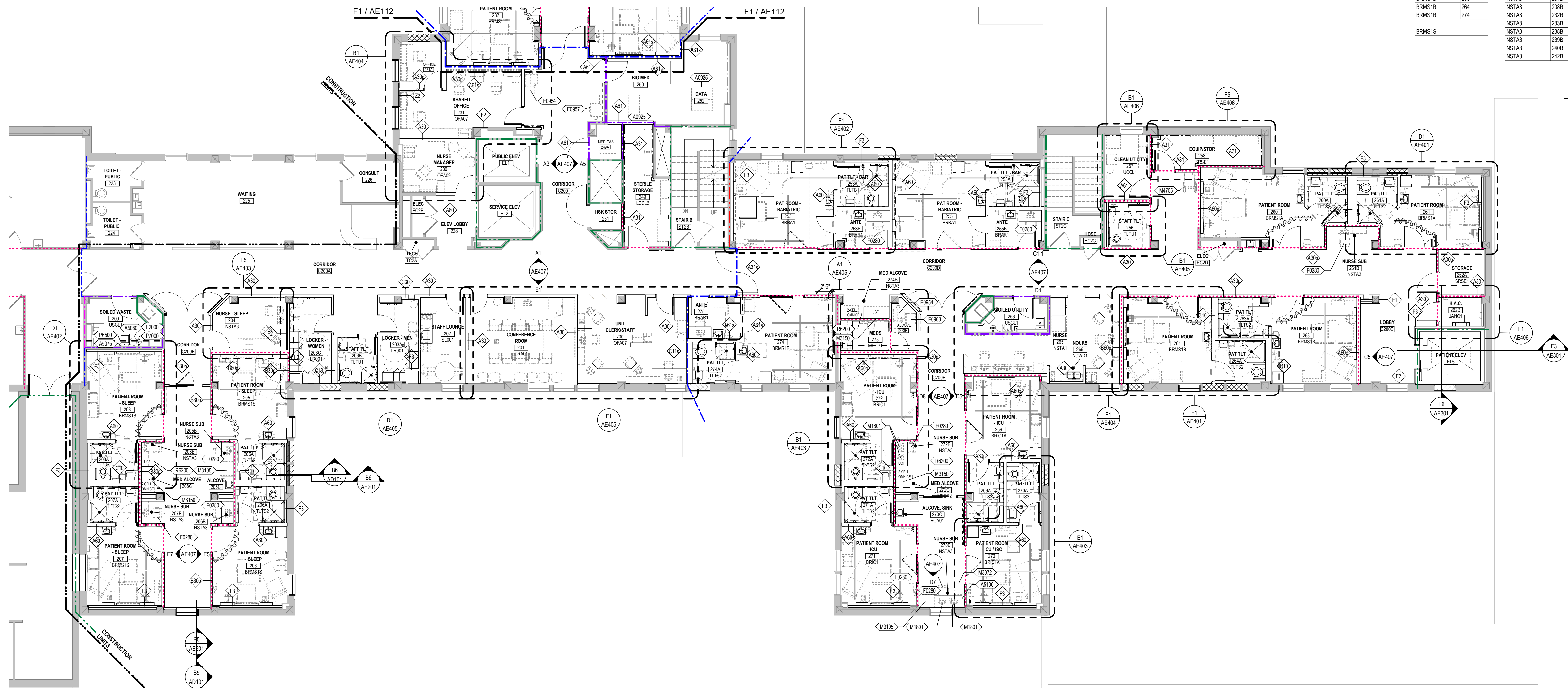
Project Number VA #568-14-110 SGA #1677
Building Number 113
Drawing Number AE100



F7 1ST LEVEL REFLECTED CEILING PLAN - AREA C (ALT #4)
1/8" = 1'-0"



Project Number VA #568-14-110 SGA #1677
Building Number 113
Drawing Number AE104






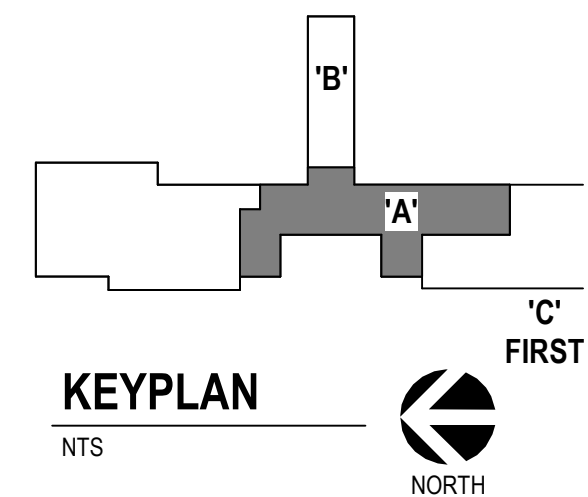
ROOM TYPES...		ROOM TYPES...		ROOM TYPES...		ROOM TYPES...	
BRAR1		BRMS1S	205	NSTA3	245B	TLTS1	232A
BRAR1	238B	BRMS1S	206	NSTA3	246B	TLTS1	233A
BRAR1	240C	BRMS1S	207	NSTA3	247B	TLTS1	238A
BRAR1	242C	BRMS1S	208	NSTA3	247B	TLTS1	239A
BRAR1	247C			NSTA3	248B	TLTS1	245A
BRAR1	253B	CRA01		NSTA3	248B	TLTS1	246A
BRAR1	255B	CRA01	201	NSTA3	253B	TLTS1	247A
BRAR1	275			NSTA3	261B	TLTS1	248A
		JANC1		NSTA3	270B		
BRBA1		JANC1	262B	NSTA3	272B	TLTS2	
BRBA1	253			NSTA3	274B	TLTS2	205A
BRBA1	255					TLTS2	206A
		LCOL2		OFA07		TLTS2	207A
		LCOL2	249	OFA07	200	TLTS2	208A
BRIC1				OFA07	231	TLTS2	240A
BRIC1	271	LR001				TLTS2	242A
BRIC1	272	LR001	203A	OFA09		TLTS2	260A
		LR001	203C	OFA09	230	TLTS2	261A
BRIC1A						TLTS2	263A
BRIC1A	269	MEDP1		RCAD1		TLTS2	264A
BRIC1A	270	MEDP1	236	RCAD1	254A	TLTS2	271A
		MEDP1	273	RCAD1	270C	TLTS2	272A
						TLTS2	274A
BRIT1		MEDP2		SL001			
BRIT1	239	MEDP2	220C	SL001	202	TLTS3	
BRIT1	240	MEDP2	220C			TLTS3	269A
BRIT1	242	MEDP2	224D			TLTS3	270A
		MEDP2	272C				
BRMS1		MEDP2	C245C	SRLW1		TLTU1	
BRMS1	232			SRLW1	254C	TLTU1	203B
BRMS1	233	NCWD1				TLTU1	256
BRMS1	238	NCWD1	235	SRSE1			
BRMS1	245	NCWD1	266	SRSE1	258	UCOL1	
BRMS1	246			SRSE1	262A	UCOL1	237
BRMS1	247	NSTA1				UCOL1	257
BRMS1	248	NSTA1	234	TLTB1			
		NSTA1	265	TLTB1	253A	USCL1	
				TLTB1	255A	USCL1	209
BRMS1A						USCL1	241
BRMS1A	260	NSTA3		TLST1		USCL1	268
BRMS1A	261	NSTA3	204				
		NSTA3	205B				
BRMS1B		NSTA3	206B				
BRMS1B	263	NSTA3	207B				
BRMS1B	264	NSTA3	208B				
BRMS1B	274	NSTA3	232B				
		NSTA3	233B				
		NSTA3	238B				
BRMS1S		NSTA3	239B				
		NSTA3	240B				
		NSTA3	242B				

GENERAL NOTES - EQUIPMENT PLANS

- A. ANY DISCREPANCIES OR CONFLICTS FOUND IN THE VARIOUS PARTS OF THE CONSTRUCTION DOCUMENTS SHALL BE BROUGHT TO THE ATTENTION OF THE COR BEFORE PROCEEDING WITH THE WORK.
 - B. ALL PENETRATIONS THROUGH FIRE RATED WALLS AND FLOORS SHALL BE FIRE CAULKED TO COMPLY WITH THE BUILDING CODE AND NFPA.
 - C. PROVIDE BLOCKING AT PARTITIONS AS REQUIRED FOR MOUNTING OF FURNISHED AND NON-FURNISHED WALL MOUNTED ITEMS.
 - D. ALIGN FINISHED FACE OF CONTINUOUS PARTITIONS THAT CHANGE PARTITION TYPES ALONG A STRAIGHT RUN.
 - E. INTERIOR DOOR FRAMES TO BE FRAMED 5' FROM ADJACENT WALL TO HINGE, UNLESS NOTED OTHERWISE.
 - F. ALL INTERIOR WALL DIMENSIONS ARE TO FACE OF GYPSUM BOARD, BRICK, OR CONCRETE, UNLESS NOTED OTHERWISE.
 - G. ALL PARTITIONS ARE TO BE TYPE A30' UNLESS NOTED OTHERWISE. REFER TO SHEET A602 FOR PARTITION TYPES.
 - H. SEE ENLARGED FLOOR PLANS FOR UNIT WALL TYPES AND DIMENSIONS.
 - I. PROVIDE CONTROL JOINTS IN DRYWALL EVERY 30'-0"
- FOR ALL GOVERNMENT PROVIDED FURNISHINGS, PLANS LIST TO BE FURNISHED WITH STAFF A REFINISHED WITH DESIGNER FOR A DEQUATE STAFF/PATIENT NEEDS IN SEPERATE FEEL PACKAGE.

EQUIPMENT LEGEND

- | | |
|---|---|
|  | EQUIPMENT - SEE SHEETS AE400 AND AE501 |
|  | WALL RATINGS - SEE SHEET G1101 |
|  | GOVERNMENT FURNISHED AND INSTALLED OR
EXISTING EQUIPMENT RELOCATED. REF
EQUIPMENT SCHEDULES ON AE400. |



F1 2ND LEVEL EQUIPMENT PLAN - AREA A
1/8" = 1'-0"

[illegible]

CONSULTANTS

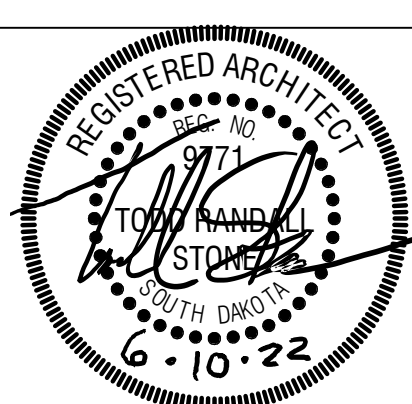
<p>STRUCTURAL:</p>  <p>Albertson Engineering Inc. Albertson Engineering, Inc. 3202 W. Main St., #C Rapid City, South Dakota 57702 Phone: 605-343-9606</p>	<p>MECHANICAL / ELECTRICAL / PLUMBING:</p>  <p>West Plains Engineering, Inc. 1750 Rand Road Rapid City, South Dakota 57702 Phone: 605-348-7455</p>
--	--

ARCHITECT OF RECORD

A/E:
STONE GROUP ARCHITECTS, INC
600 EAST 7TH ST
SIOUX FALLS, SD 57104
605.271.1144
TODD STONE, AIA



STAMI



Office of
Construction
and Facilities
Management



U.S. Department
of Veterans Affairs

Drawing Title
EQUIPMENT PLAN - 2ND LEVEL AREA A AND
ROOM TYPE SCHEDULE

Approved:

Phase	CONSTRUCTION DOCUMENTS
-------	------------------------

FULLY SPRINKLERED

Project Title	RENOVATE AND CONSOLIDATE INPATIENT FUNCTIONS
---------------	---

Location	FORT MEADE, SOUTH DAKOTA
----------	--------------------------

Issue Date	06/10/2022
------------	------------

Checked
TS

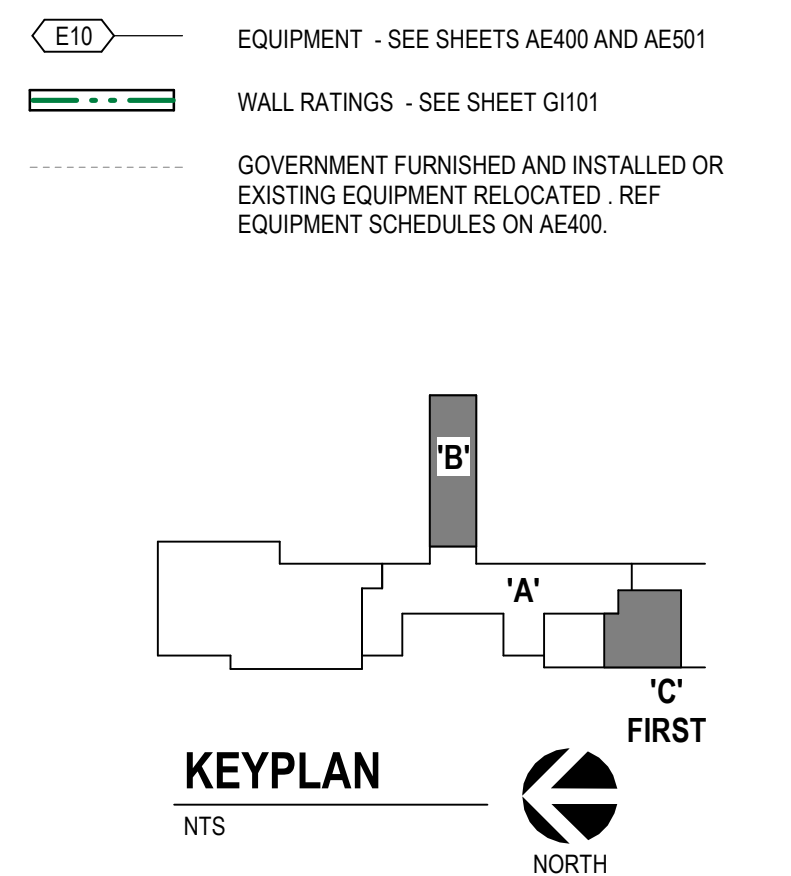
Project Number VA #568-14-110 SGA #1677
Building Number 113

Drawing Number	AE111
----------------	-------



GENERAL NOTES - EQUIPMENT PLANS

- ## EQUIPMENT LEGEND



CONSULTANTS

<p>STRUCTURAL:</p>  <p>Albertson Engineering Inc. Albertson Engineering, Inc. 3202 W. Main St. #C Rapid City, South Dakota 57702 Phone: 605-343-9606</p>	<p>MECHANICAL / ELECTRICAL / PLUMBING:</p>  <p>West Plains Engineering, Inc. 1750 Rand Road Rapid City, South Dakota 57702 Phone: 605-348-7455</p>
---	--

ARCHITECT OF RECORD

A/E:
STONE GROUP ARCHITECTS, INC
600 EAST 7TH ST
SIOUX FALLS, SD 57104
605.271.1144
TODD STONE, AIA



STAMP



Office of
Construction
and Facilities
Management

U.S. Department
of Veterans Affairs

Drawing Title	EQUIPMENT PLAN - 2ND LEVEL AREA B & 1ST LEVEL
---------------	--

Approved:

Phase	CONSTRUCTION DOCUMENTS
-------	------------------------

FULLY SPRINKLERED

Project Title	RENOVATE AND CONSOLIDATE INPATIENT FUNCTIONS
---------------	---

Location	FORT MEADE, SOUTH DAKOTA
----------	--------------------------

Issue Date
06/10/2025

Checked	
TO	

Drawn	IN/LL
-------	-------

Project Number VA #568-14-110 SGA #1677
Building Number 113

Drawing Number
AE11

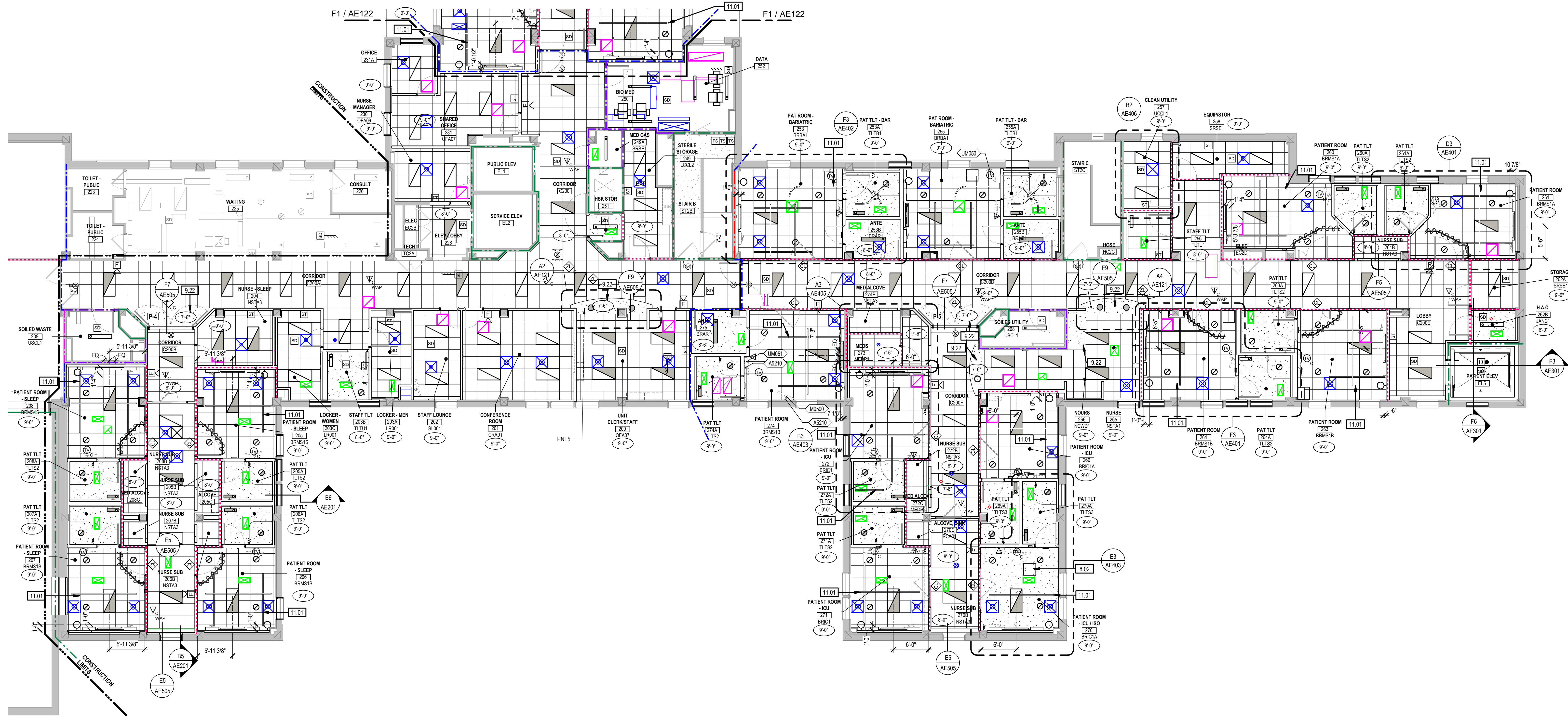
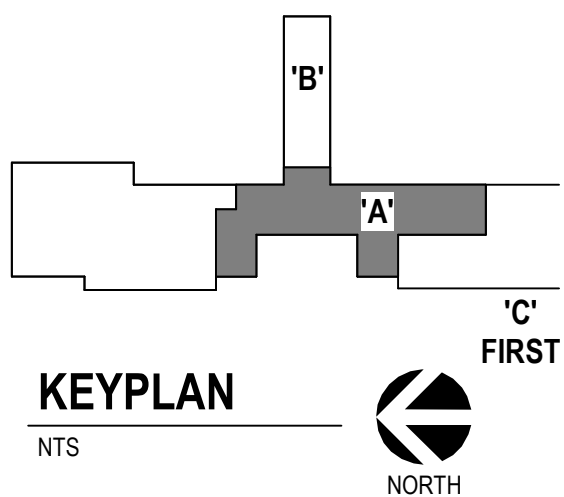
- | | |
|----|---|
| A. | ALL SURFACES DAMAGED DURING DEMOLITION SHALL BE REPAIRED FOR APPLICATION OF NEW FINISHES OR PATCHED TO MATCH EXISTING. |
| B. | CONTRACTOR SHALL FIELD VERIFY ALL EXISTING CONDITIONS AND DIMENSIONS WHICH ARE TO MATCH EXISTING CONSTRUCTION. CONTACT COR WITH DISCREPANCIES. |
| C. | ALL CEILINGS TO BE 9" 4" AFF, UNLESS NOTED OTHERWISE. |
| D. | ALL ACT CEILINGS TO BE ACT1, UNLESS NOTED OTHERWISE. |
| E. | GENERAL CONTRACTOR TO COORDINATE ALL CEILING MOUNTED EQUIPMENT SUPPORT REQUIREMENTS, LOCATIONS, DIMENSIONS, AND EQUIPMENT SUPPLIER AND OWNER, PRIOR TO INSTALLATION. |
| F. | ALL CEILING MOUNTED ITEMS SUCH AS LIGHT FIXTURES, GRILLES, DIFFUSERS, SPEAKERS, EXIST LIGHTS ETC. SHALL BE LOCATED IN THE CENTER OF PANELS, GYP BD SOFFITS AND/OR PLASTER SOFFIT. SEE EQUIPMENT SCHEDULE OTHERWISE. COORDINATE WITH MECHANICAL AND ELECTRICAL DRAWINGS. |
| G. | SEE MECHANICAL DRAWINGS FOR SPRINKLER HEAD TYPES AND LOCATIONS. CENTER ALL HEADS IN ACT, UNLESS NOTED OTHERWISE. |
| H. | WHERE SURFACE MOUNTED CUBICLE CURTAIN AND/OR IV TRACKS CROSS REVEAL, EDGE ACT PROVIDE SPACERS AT CEILING TIES FOR TRACK ALIGNMENT. COLOR TO MATCH SUSPENSION SYSTEM. |
| I. | PAINT HORIZONTAL AND VERTICAL FACES OF THE SOFFITS P1, UNLESS NOTED OTHERWISE. |
| J. | ALL BULKHEAD HORIZONTAL AND VERTICAL FACES TO BE PAINTED P1. |
| K. | ACCESS PANELS TO RECEIVE PAINT TO MATCH ADJACENT CEILING SURFACE. |

SHEET KEYNOTES

- 8.02 ACCESS PANEL.
9.22 GYPSUM BOARD SOFFIT.
11.01 PATIENT LIFT TRACK. SEE DETAIL F3/AE50.

CEILING PLAN LEGEND

- | | |
|--|--|
| | RECESSED OR SEMI-RECESSED LIGHT FIXTURE |
| | SURFACE MOUNT LIGHT FIXTURE |
| | PENDANT MOUNT LIGHT FIXTURE |
| | CEILING EXIT SIGN, SINGLE OR DOUBLE FACE, REF. ELEV. |
| | CEILING OUTLET, REF. ELEV. |
| | SPEAKER RECESSED IN CEILING |
| | CEILING TV CABLE LOCATION, REF. ELEV. |
| | NURSE CALL LIGHT, REF. ELECTRICAL |
| | SUPPLY REGISTER OR DIFFUSER |
| | EXHAUST OR RETURN REGISTER |
| | SMOKE DETECTOR |
| | RADIANT HEATING PANEL |
| | ACCESS PANEL |
| | CEILING TRACK |
| | GYPSUM BOARD CEILING - SEE SCHEDULE ON IN601 |
| | LAY-IN CEILING SYSTEM - SEE SCHEDULE ON IN601 |
| | CEILING HEIGHT ELEVATION TAG |
| | SPOT ELEVATION TAG |
| | EXPOSED STRUCTURE |
| | WALL RATINGS - SEE SHEET G1101 |
| | GOVERNMENT FURNISHED AND INSTALLED OR EXISTING EQUIPMENT RELOCATED. REF. EQUIPMENT SCHEDULES ON AE601. |
| | EQUIPMENT TAG |



F1 2ND LEVEL REFLECTED CEILING PLAN - AREA A
1/8" = 1'-0"

[illegible]

CONSULTANTS

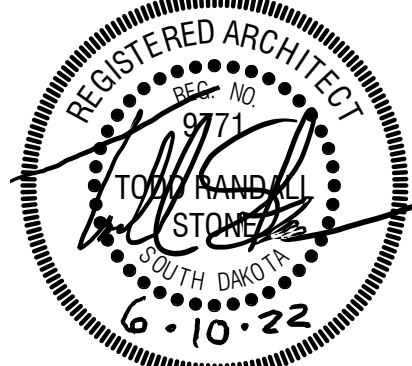
<p>STRUCTURAL:</p>  <p>Albertson Engineering Inc.</p> <p>Albertson Engineering, Inc. 3202 W. Main St, #C Rapid City, South Dakota 57702 Phone: 605-343-9606</p>	<p>MECHANICAL / ELECTRICAL / PLUMBING:</p>  <p>West Plains Engineering, Inc. 1750 Rand Road Rapid City, South Dakota 57702 Phone: 605-348-7455</p>
---	--

ARCHITECT OF RECORD

A/E:
STONE GROUP ARCHITECTS, INC
600 EAST 7TH ST
SIOUX FALLS, SD 57104
605.271.1144
TODD STONE, AIA



STAMP



Office of
Construction
and Facilities
Management

U.S. Department
of Veterans Affairs

Drawing Title	REFLECTED CEILING PLAN - 2ND LEVEL AREA A
---------------	--

Approved:

Phase	CONSTRUCTION DOCUMENTS
-------	------------------------

FULLY SPRINKLERED

Project Title	RENOVATE AND CONSOLIDATE INPATIENT FUNCTIONS
---------------	---

Location	FORT MEADE, SOUTH DAKOTA
----------	--------------------------

Checked

Drawn

Project Number
VA #568-14-110
SGA #1677

Building Number
113

Drawing Number

AE12:

- A. APPLY SEALANT AND BACKER ROD TO ALL JOINTS BETWEEN DISSIMILAR MATERIALS.
- B. ALL SURFACES DAMAGED DURING DEMOLITION SHALL BE REPAIRED FOR APPLICATION OF NEW FINISHES OR PATCHED TO MATCH EXISTING.
- C. CONTRACTOR SHALL FIELD VERIFY ALL EXISTING CONDITIONS AND DIMENSIONS WHICH ARE TO MATCH EXISTING CONSTRUCTION. CONTACT COR WITH DISCREPANCIES.

4.01 CAREFULLY REMOVE BRICK COURSING FOR INSTALLATION OF STEEL LINTEL. REPLACE EXISTING BRICK AFTER LINTEL IN PLACE. MATCH EXISTING MORTAR.

4.40 NEW CUT STONE SILL TO MATCH EXISTING.

7.10 EXTERIOR INSULATION AND FINISH SYSTEM (EIFS).

7.40 COMPOSITE METAL PANEL TO MATCH EXISTING. FACE TO ALIGN WITH EXISTING EXTERIOR FINISH. CUT STONE. IN LOCATION THIS DOES NOT APPLY. MATCH DEPTH OF REVEAL.

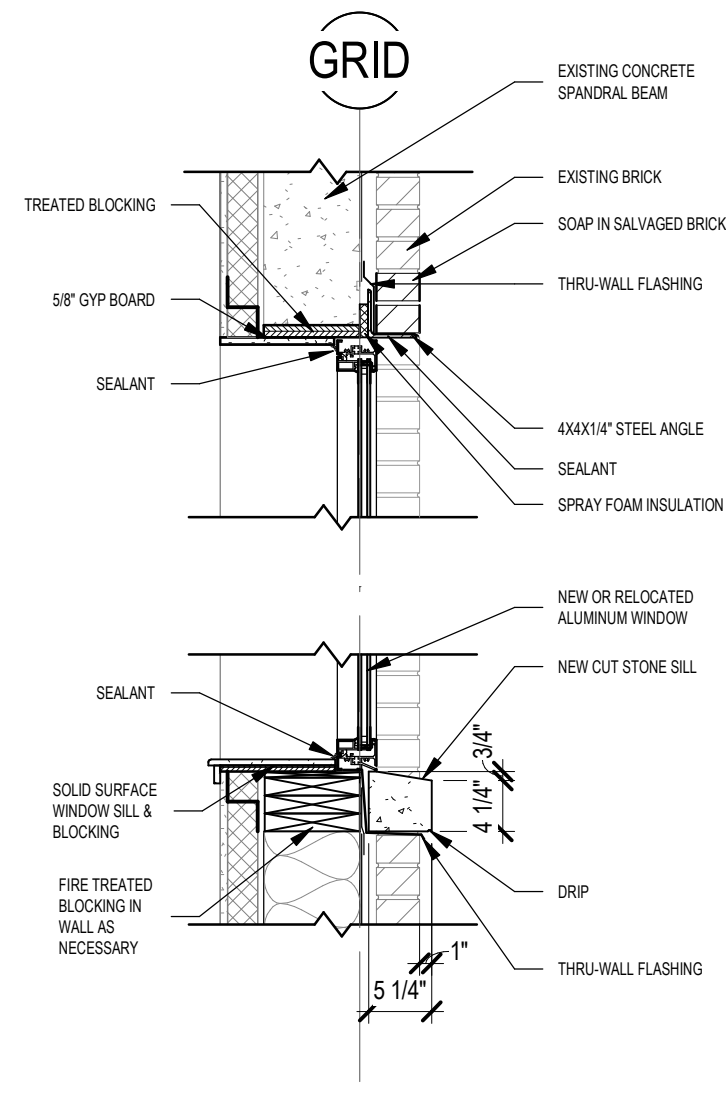
7.43 PREFINISHED METAL GRAVEL STOP. FACE DEPTH AND COLOR TO MATCH EXISTING.

7.58 SCUPPER BOX (PREFINISHED).

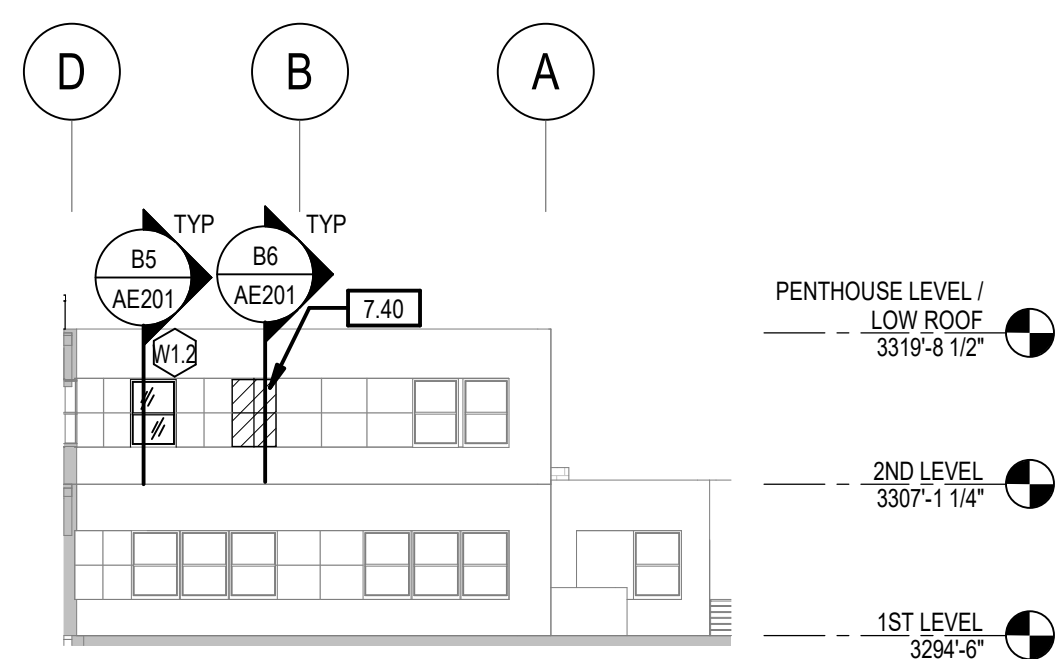
7.60 OPEN-FAÇED DOWNSPOUT (PREFINISHED).

23.02 LOUVER - REF. MECH. COLOR TO MATCH EXISTING LOUVERS.

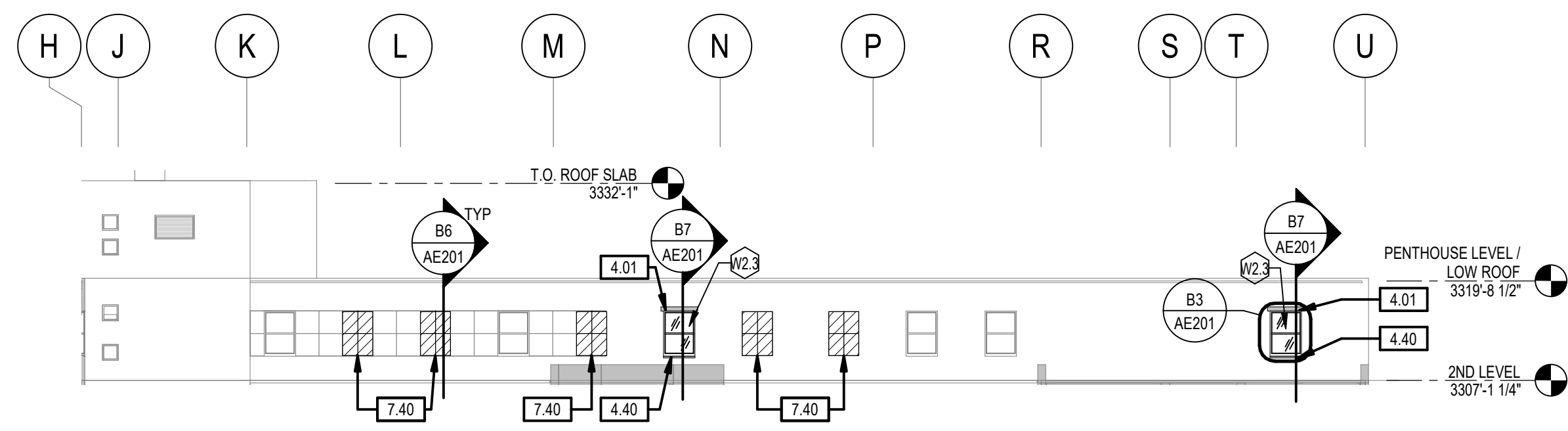
7.58 SCUPPER BOX (PREFINISHED).
7.60 OPEN-FACED DOWNSPOUT (PREFINISHED).
23.02 LOUVER - REF MECH. COLOR TO MATCH EXISTING LOUVERS



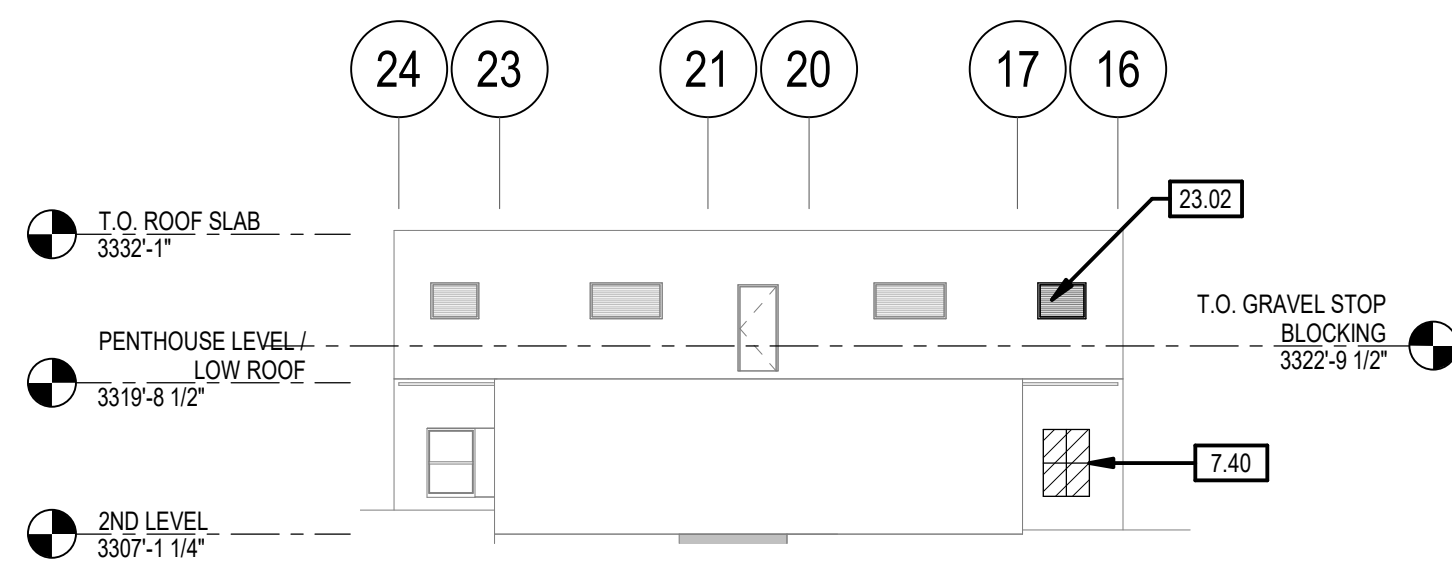
B7 **NEW WDW / DEMO WALL**
3/4" = 1'-0"



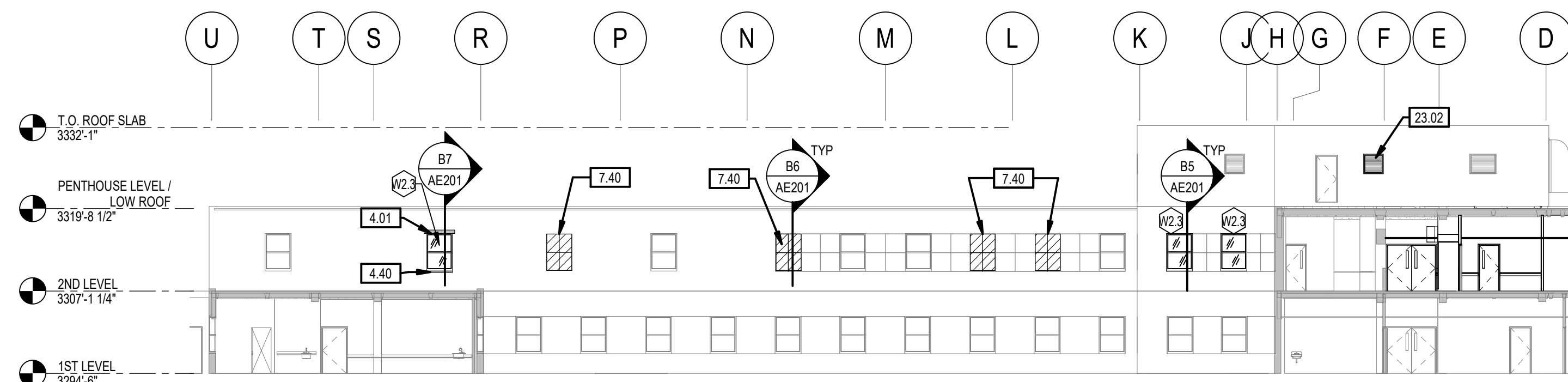
D7 NORTH ELEVATION - PARTIAL
1/16" = 1'-0"



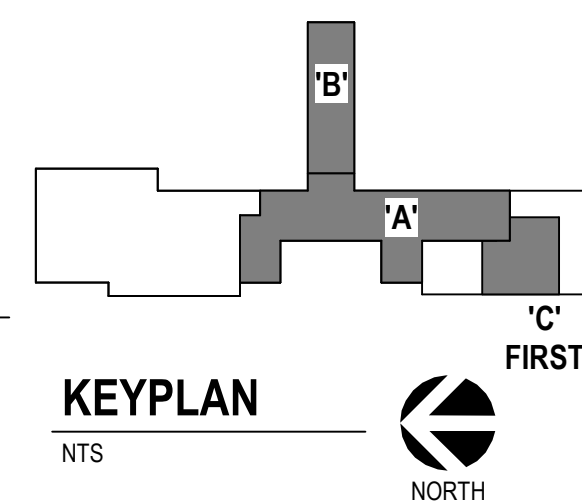
E3 SOUTH ELEVATION 2
1/16" = 1'-0"



F4 EAST ELEVATION 2
1/16" = 1'-0"

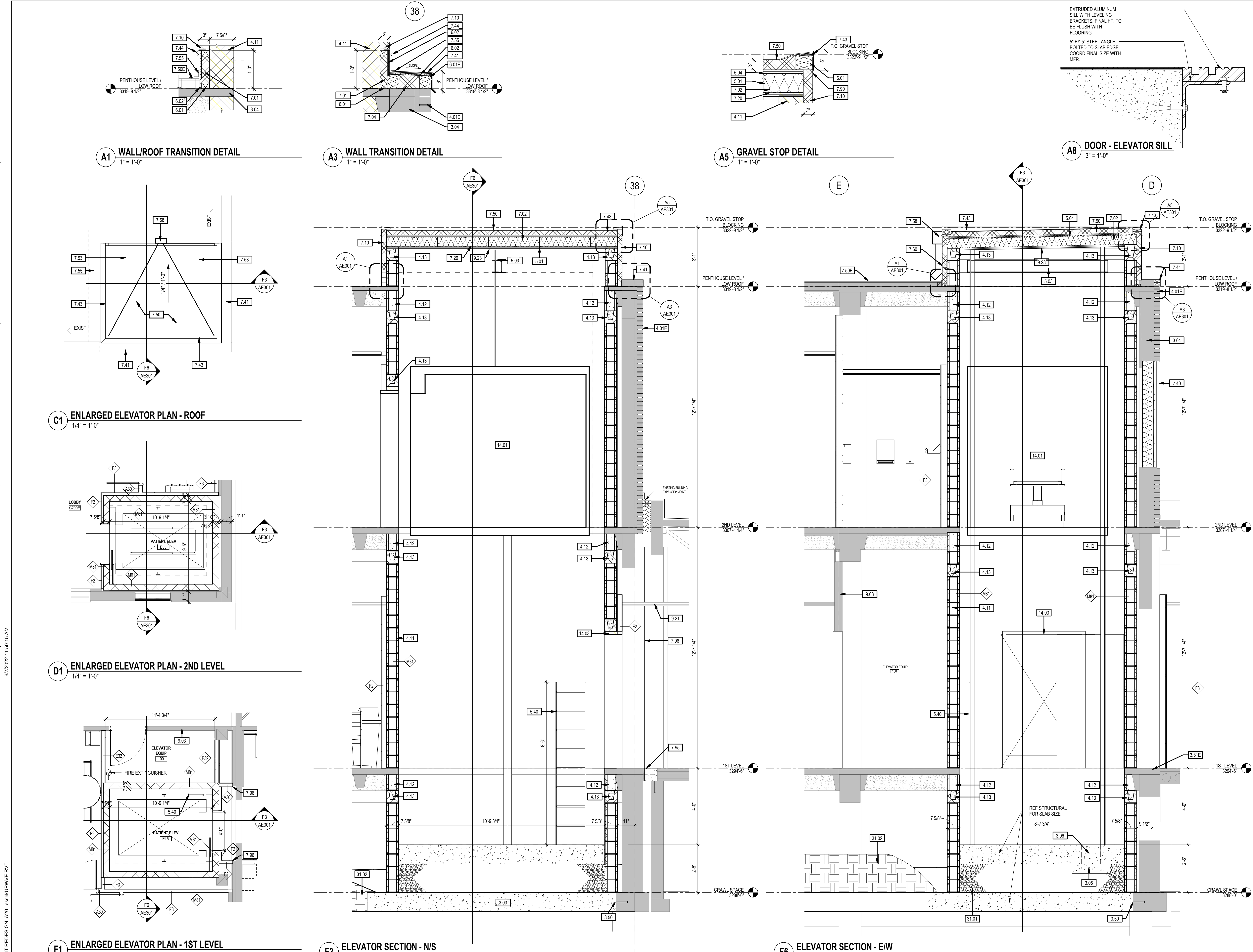


F6 NORTH ELEVATION 1
1/16" = 1'-0"



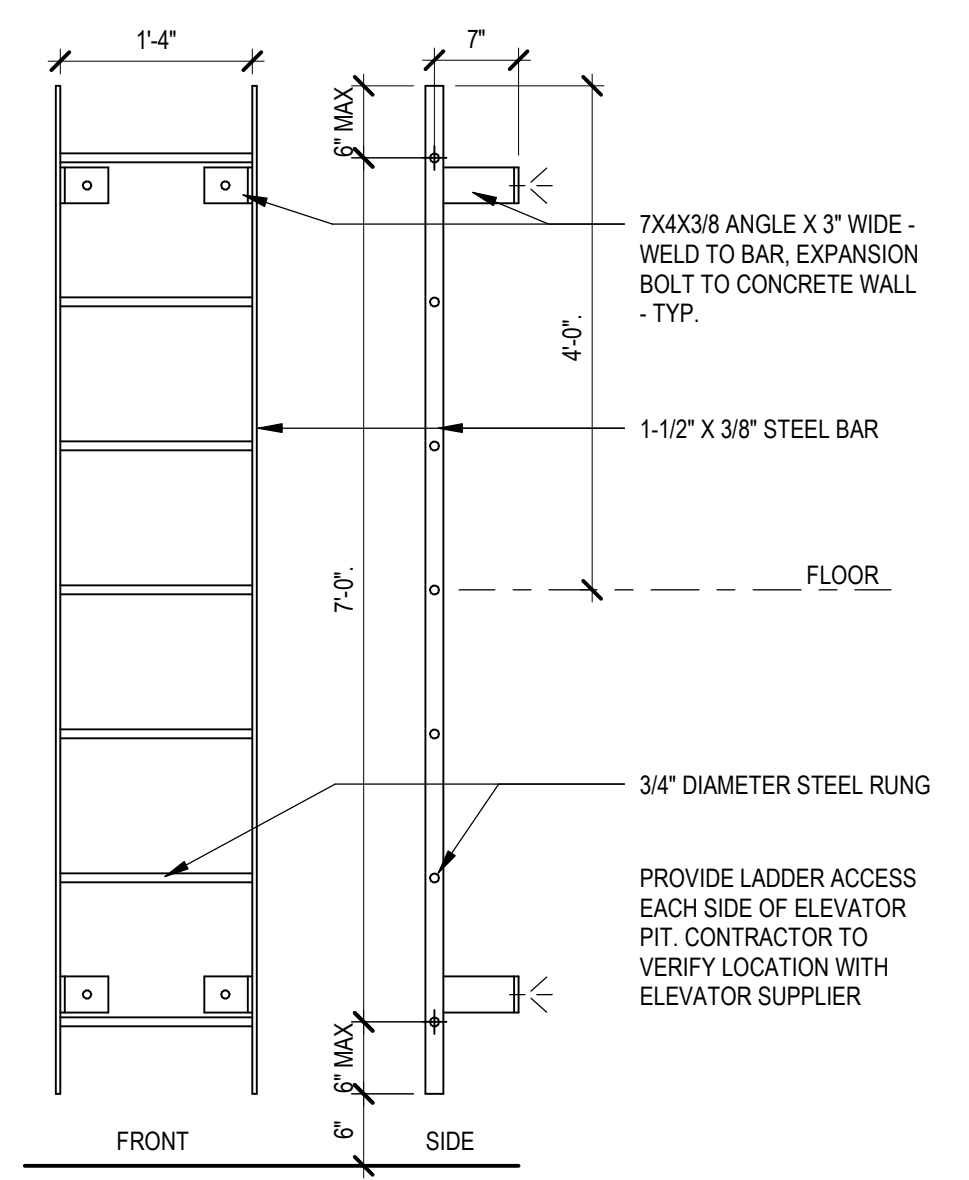
Project Number VA #568-14-110 SGA #1677
Building Number 113
Drawing Number AE201

Three inches = one foot
one and one half inches = one foot
one inch = one foot
one quarter inch = one foot
one half inch = one foot
three eighths inch = one foot
one eighth inch = one foot
one eighth inch = one foot



- GENERAL NOTES**
- A. ANY DISCREPANCIES OR CONFLICTS FOUND IN THE VARIOUS PARTS OF THE CONSTRUCTION DOCUMENTS SHALL BE BROUGHT TO THE ATTENTION OF THE COR BEFORE PROCEEDING WITH THE WORK.
 - B. FURNITURE IS PROVIDED AND INSTALLED BY OTHERS.
 - C. WRITTEN DIMENSIONS TAKE PRECEDENCE OVER SCALED DIMENSIONS. DO NOT SCALE THE DRAWINGS.
 - D. CONTRACTOR & SUBCONTRACTORS TO VERIFY ALL EXISTING CONDITIONS AT THE PROJECT SITE.
 - E. ALL MATERIALS & EQUIPMENT SHALL BE INSTALLED PER MANUFACTURERS INSTRUCTIONS.
 - F. DETAILS SHOWN ARE TYPICAL UNLESS OTHERWISE NOTED. SIMILAR DETAILS APPLY IN SIMILAR CONDITIONS.
 - G. PROVIDE WOOD BACKING FOR ALL BATH ACCESSORIES, HANDRAILS, OR OTHER ITEMS ATTACHED TO BUILDING WALLS.
 - H. GYPSUM USED IN RESTROOMS SHALL BE WATER RESISTANT GYPSUM BOARD. USE DURAROCK @ ALL PORCELAIN & CERAMIC TILE LOCATIONS.
 - J. PROVIDE ADA COMPLIANT SIGNAGE FOR ALL REQUIRED AREAS, ROOMS, & ACCESSIBLE PATHS.
 - K. HEIGHT OF OPERATIONAL OR DISPENSING PORTION OF ACCESSORIES & FIXTURES NOT TO EXCEED 48" A.F.F.

- SHEET KEYNOTES**
- 3.03 CONCRETE SLAB. REF STRUCTURAL.
 - 3.04 EXISTING CONCRETE SPANDREL BEAM / FLOOR SLAB.
 - 3.05 CONCRETE SUMP BASE. REF STRUCTURAL.
 - 3.06 SUMP PIT. REF STRUCTURAL.
 - 3.31E EXIST 1 1/2" CONCRETE TOPPING.
 - 3.50 DOWEL TO EXISTING CONCRETE FOOTING. REF STRUCTURAL.
 - 4.01E EXISTING FACE BRICK.
 - 4.11 8" CMU - REF STRUCT.
 - 4.12 SOAP CMU AT OPENING. REF STRUCTURAL DETAILS.
 - 4.13 BOND BEAM - REF STRUCT.
 - 5.01 STEEL JOIST - REF STRUCT.
 - 5.03 HOISTWAY BEAM. VERIFY WITH MFR.
 - 5.04 STEEL DECKING - REF STRUCT.
 - 5.40 PIT LADDER - BY ELEVATOR MANUF. SEE DETAIL F9AE301.
 - 6.01 FIRE TREATED WOOD BLOCKING.
 - 6.01E EXISTING WOOD BLOCKING.
 - 6.02 FIRE TREATED PLYWOOD.
 - 7.01 RIGID INSULATION (2 1/2").
 - 7.02 FULL DEPTH BATT INSULATION.
 - 7.04 SPRAY FOAM INSULATION.
 - 7.10 EXTERIOR INSULATION AND FINISH SYSTEM (EIFS).
 - 7.20 VAPOR BARRIER.
 - 7.40 COMPOSITE METAL PANEL TO MATCH EXISTING. FACE TO ALIGN WITH ADJACENT EXISTING PANELS AND CUT STONE. IN LOCATIONS THIS DOES NOT APPLY MATCH DEPTH OF REVEAL.
 - 7.41 PREFINISHED METAL FLASHING.
 - 7.43 PREFINISHED METAL GRAVEL STOP. FACE DEPTH AND COLOR TO MATCH EXISTING.
 - 7.44 REGLET AND COUNTER FLASHING.
 - 7.50 EPDM ROOF SYSTEM W/ 3" RIGID ROOFING INSULATION.
 - 7.50E EXISTING EPDM ROOF SYSTEM.
 - 7.53 RIGID INSULATION CRICKET (TAPERED 1/4" PER 12" MIN.).
 - 7.55 TIE-IN ROOF MEMBRANE FLASHING TO EXISTING EPDM ROOF TO MAINTAIN WARRANTY PER MANUFACTURERS RECOMMENDATIONS.
 - 7.58 SCUPPER BOX (PREFINISHED).
 - 7.60 OPEN FACED DOWNSPOUT (PREFINISHED).
 - 7.90 SEALANT.
 - 7.95 FLOOR EXPANSION JOINT REPLACEMENT COVER.
 - 7.96 WALL TO WALL EXPANSION JOINT ASSEMBLY.
 - 9.03 UPDATE CYP BD & METAL STUD WALL TO DECK AND ANY PENETRATIONS TO 2 HR RATING.
 - 9.21 ACOUSTICAL CEILING TILE. REF ROOM FINISH SCHEDULE.
 - 9.23 (2) LAYERS 5/8" TYPE 'X' GYPSUM BOARD TO MAINTAIN 2-HR RATING.
 - 14.01 ELEVATOR CAB.
 - 14.03 ELEVATOR DOOR FRAME. VERIFY W/ MANUFACTURER.
 - 31.01 FILL CAVITY BETWEEN FOUNDATION AND ELEVATOR FLOOR WITH 3/4" CLEAN ROCK.
 - 31.02 EXCAVATE, COMPACT AND RESHAPE CRAWL SPACE GRADE AS NECESSARY.



			CONSULTANTS		ARCHITECT OF RECORD		STAMP		<div>Office of Construction and Facilities Management</div>		<div>Drawing Title ELEVATOR PLANS AND SECTIONS</div>		<div>Phase CONSTRUCTION DOCUMENTS</div>		<div>Project Title RENOVATE AND CONSOLIDATE INPATIENT FUNCTIONS</div>		<div>Project Number VA #568-14-110 SGA #1677</div>			
			<div>STRUCTURAL: <div>Albertson Engineering, Inc. 3202 W. Main St. #C Rapid City, South Dakota 57702 Phone: 605-343-9606</div></div>		<div>MECHANICAL / ELECTRICAL / PLUMBING: <div>WEST PLAINS ENGINEERING, INC. 1750 Rand Road Rapid City, South Dakota 57702 Phone: 605-348-7455</div></div>		<div>A/E: STONE GROUP ARCHITECTS, INC. 600 EAST 7TH ST SIOUX FALLS, SD 57104 605.271.1144 TODD STONE, AIA</div>		<div><div>REGISTERED ARCHITECT TODD STONE SOUTH DAKOTA 6-10-22</div></div>		<div>VA U.S. Department of Veterans Affairs</div>		<div>Approved:</div>		<div>FULLY SPRINKLERED</div>		<div>Location FORT MEADE, SOUTH DAKOTA</div>		<div>Drawing Number 113</div>	
<div>Revision#</div>			<div>Description</div>									<div>Issue Date 06/10/2022</div>		<div>Checked TS</div>		<div>Drawn JN/JH</div>		<div>AE301</div>		
<div>Date:</div>																				

EQUIPMENT SCHEDULE - GOVERNMENT FURNISHED						
JSN	Nomenclature	Acqins	Count	Description	Other Notes	
A0025	Cabinet, Computer, Server, Blade	W	4	Full Featured Hospital Bed Rack enclosure cabinet for blade servers and other data center components. Rack is designed to support equipment, efficient cooling and flexible cable management. Front and rear doors will aid cooling and simplify component installations. Numerous sizes and configurations are available.		
A1011	Telephone, Desk, 1 Line	W	25	Telephone, Desk, 1 Line		
A1015	Telephone, Desk, Multiple Line	W	9	Telephone, Desk, Multiple Line		
A5025	Bench, Locker Room, Portable	W	25	Bench, Locker Room, Portable		
A5035	Dispenser, Soap, Disposable	VC	63	Disposable soap dispenser. One-handed dispensing operation. Designed to accommodate disposable soap cartridge and valve.		
A5077	Hand Sanitizer, Wall Mount	VC	42	A touch free wall-mounted hand sanitizer dispenser. For use throughout a healthcare facility. Unit does not include the sanitizing liquid. Units are battery operated.		
A5080	Dispenser, Paper Towel, SS, Surface Mounted	VC	22	A surface mounted, satin finish stainless steel, single-fold, paper towel dispenser. Dispenser features: tumblers lock; front hinged at bottom; and refill indicator slot. Minimum capacity 400 single-fold paper towels. For general purpose use throughout the facility.		
A5082	Dispenser, Paper Towel, Sensor, Hands Free	VC	45	A surface mounted, sensor activated, automatic, roll paper towel dispenser. The unit dispenses a paper towel automatically only when hands are placed in position below the dispenser for maximum sanitation and hygiene. May include adjustable settings for sheet length, time delay, and sensor range. Unit is battery operated or with optional AC power adapter.		
A5090	Disposal, Sanitary Napkin, SS, Surface Mounted	VC	2	A surface mounted, satin finish stainless steel, sanitary napkin disposal. Disposal features a flip-up cover, secured to the container by a heavy duty stainless steel piano hinge. Disposal must be secured to wall or toilet partition. For general purpose use in female toilet stalls or rooms and unisex toilet stalls.		
A5106	Waste Disposal Unit, Sharps w/Glove Dispenser	VC	34	The unit is designed for the disposal of sharps and complies with OSHA guidelines for the handling of sharps. It shall house a 5 quart container and be capable of being mounted on a wall. It shall have a glove dispenser attached. May be secured by a locked enclosure.		
A5107	Dispenser, Glove, Surgical/Examination, Wall Mntd	W	3	Examination glove dispenser box for wall mounting. Fabricated of either cold rolled steel with a white baked enamel finish, plastic or acrylic. Provided with wall bracket to facilitate mounting and demounting.		
A5108	Waste Disposal Unit, Sharps	VC	2	A container for collecting and transporting syringes and other sharps for decontamination and disposal. Available in 2 gallon and 5 gallon with locking ether. Complies with OSHA regulations for handling sharps.		
A5200	Dispenser, Toilet Tissue, SS, 2-Roll, Surface Mntd	VC	2	A concealed surface mounted, double roll, satin finish stainless steel, toilet tissue dispenser. Unit accommodates two standard-core toilet tissue rolls of 5 1/2 inch diameter. Spindles are chrome plated plastic with a heavy-duty internal spring and turn freely for non-controlled delivery. For general purpose use in restrooms.		
A5220	Bracket, Television, Wall Backing	VC	11	Wall mounted television bracket with adjustable arm. Consists of movable arm with minimum 120 degree swivel. Designed for holding wall mounted, flat panel television units in patient rooms.		
A5220	Bracket, Television, Wall Backing	VC	11	Bracket, Television, Wall Backing		
A6003	Machine, Vending	D	2	Machine, Vending		
A6046	Network, Decorative, With Frame	W	11	This JSN is to be used for determining and defining location of decorative artwork.		
E0051	Workstation, Corner Work Surface, Wall Mtd, 72x48	W	1	This TYPICAL INCLUDES: 4 Vertical Hanging Strips 2 Lockable Flipout Units 2 Shelf, Storage/Display 2 Light 1 Tabboard 2 Top Rail 2 Paper Tray 1 Diagonal Tray 1 Cantilevered Work Surface 1 Cantilevered Corner Tray 1 Mobile Pedestal, Box/File 1 1-Cou Hider		
E1023	Workstation, Straight, Free Standing, 72" W	W	4	This JSN will provide a whole work station topology to quickly plan work areas in clinical or administrative spaces. There will be a piece increase if physical work stations are used with vertical hanging strips instead of panels. THIS TYPICAL INCLUDES: 4 Standard Solid Panels 2 Panel Connectors, 2-Way Corner 1 Panel-to-Panel Connector 1 Spliced End Hardware 1 Cantilevered, Work Surface 2 Lockable Flipout Units 2 Shelf, Storage/Display 2 Lights 1 Tab board 1 Tool Rail 1 Tray Tray 1 Diagonal Tray 1 Adjustable Keyboard Tray 1 Mobile Pedestal, Box/File		
E0903	Locker, Supply, w/Shelves, Wall Mtd, 23W x 20D	VC	2	THIS TYPICAL INCLUDES: 1 Wall Mounted Rail, 1 Supply Locker, 1 Drawer, 91 (22mm), 4 Drawer/Shelves, Drawer Organizer Bins. Consider the need for an ER02 to transport the locker from floor to place.		
E0906	Locker, Supply, General, Wall Mtd, 23W x 20D	VC	2	THIS TYPICAL INCLUDES: 1 Wall Mounted Rail, 1 Locker Storage Container, 2 Tray/Shelves, 1 Drawer, 91 (22mm), 3 Drawers, 61 (50mm), 2 Drawers, 91 (22mm), 1 Tray/Shel/Drawer, Drawer Organizer Bins. Consider the need for an ER02 to transport the locker from floor to place.		
E0912	Locker, Supply, Med Surg, Wall Mtd	VC	2	Medical/Surgical Supply Locker, Wall Mounted, approximately 23W x 20D. THIS TYPICAL INCLUDES: 1 Wall Mounted Rail, 1 Locker Storage Container, 4 Tray/Shelves, 5 Drawers, 91 (76mm), 2 Drawers, 61 (50mm), 2 Tray/Shel/Drawer, Drawer Organizer Bins. Consider the need for an ER02 to transport the locker from floor to place.		
E0948	Cart, General Storage, Mobile, 42W x 32W x 22D	W	4	THIS TYPICAL INCLUDES: 1 Cart Body, Style-A Narrow, w/Raised Edge Top, 2 Drawers, 31 1/4 (15mm), 6 H 1 Accessory Rail, Side Drawer Organizer Bins		
E0954	Cart, Emergency, Mobile, 66W x 52W x 22D	W	2	THIS TYPICAL INCLUDES: 1 Cart body, style-A narrow, w/raised edge top, 1 Accessory rail, 2 1 Accessory rail, 1 Defibrillator Tray, 1 IV pole, 1 Breakaway bar, 1 Flip-up shelf, 1 Waste/bedside, 1 Oxygen tank holder, 1 Electrical box 4-outlet, 1 Cord wrap, 4 Drawer, 31 1/4, 3 Drawer, 61 Drawer Organizer		
E0957	Cart, Medication, Mobile, 66W x 54W x 22D	W	2	THIS TYPICAL INCLUDES: 1 cart body, style-A narrow, w/raised edge top, 1 lock bar, 2 accessory rails, side, 1 waste/bedside, 1 sharps container holder, flip-up shelf, 1 flashlight holder, 1 wall lock, 2 drawers, 31 1/4, 1 locked drawer, 3 1 w/locked flip, 3 8-in cassette assembly and drawer organizer bins		
E0963	Cart, General Storage, Mobile	W	3	Mobile General Storage Cart, approximately 72W x 23W x 22D. THIS TYPICAL INCLUDES: 1 Locker Storage Container on wheels, w/Isold Door, 3 Tray/Shelves		
F0115	Bookcase, Open, 5 Shelf	W	1	Freestanding open bookcase, approximately 72 inch high x 36 inch wide x 18 inch deep with 5 (five) adjustable shelves. Unit can be separate or part of a system with available add-on shelving.		
F0205	Chair, Side With Arms	W	10	Upholstered side chair, 32" high x 21" wide x 23" deep with arms, padded seats and padded backs. Seat height is a minimum of 17". Available with or without seat base.		
F0215	Chair, Childs	EX	2	Children play area chair, existing here have been discarded. VA interiors will provide if needed.		
F0220	Chair, Dining Room	W	13	Conference chair designed to complement the executive furniture package selected. Foam rubber cushioned seats and backs covered with either woven fabric or vinyl. Base with 5 (five) swivel casters.		
F0225	Chair, Dining Room	W	5	Dining room chair with glides. Chair has straight legs with cushioned back and vinyl seat.		
F0280	Chair, Swivel, Low Back	W	39	Low back conference chair, 37" high x 23" wide x 31" deep with 5 casters swivel base, arms and foam padded seat and back upholstered with either woven textile fabric or vinyl.		
F0295	Chair, Stacking	W	12	Chair, Stacking		
F0305	Chair, Waiting Room, Single	W	36	Single seat waiting room chair with foam padded seat and back. Upholstered with either woven fabric textile or vinyl. Arms and floor glides included.		
F0310	Chair, Waiting Room, Tandem	W	3	Upholstered side chair. Double width with arms, padded seats and padded backs. Seat height is a minimum of 17". Available with or without seat base.		
F0311	Chair, Waiting Room, Triple	W	1	Upholstered side chair. Triple width with arms, padded seats and padded backs. Seat height is a minimum of 17". Available with or without seat base.		
F0315	Chair, Steeper	W	23	Sleeper chair, 36" high x 36" wide x 74" deep (as a bed). Chair designed to convert (either fold-out or reclining) into a temporary bed used by either hospital staff or a patient's immediate family.		
F0315B	Chair, Steeper, Bariatric	W	2	Bariatric Steeper chair, 36" high x 44" wide x 74" deep (as a bed). Chair designed to convert (either fold-out or reclining) into a temporary bed used by either hospital staff or a patient's immediate family.		
F0378	Lowest, Upholstered	W	13	Lowest, Upholstered		
F0378B	Lowest, Upholstered, Bariatric	W	2	Lowest, Upholstered, Bariatric		
F0400	Cabinet, Bedside, Door, Drawer	W	25	Bedside cabinet for storage of both the patient's personal items and small patient support items. Approximately 31" high x 21" wide x 18" deep with one (1) drawer and one (1) closed storage compartment. Drawer is removable so interior can be sanitized. May come in a 3 drawer version.		
F0410	Cabinet, Filing, Half Height, 2 Drawer	W	1	Half height two (2) or three (3) drawer lateral filing cabinet, 26" high x 26" wide x 18" deep with recessed handles, locking device and drawer label holders. Drawers are adaptable to either letter size materials.		
F0420	Cabinet, Filing, Full Height	W	3	Half height two (2) or three (3) drawer lateral filing cabinet, 26" high x 26" wide x 18" deep with recessed handles, locking device and drawer label holders. Drawers are adaptable to either letter or legal size materials.		
F0465	Cabinet, Storage, 2 Door, 5 Shelf	W	1	Storage cabinet, 76" high x 48" wide x 24" deep with two (2) doors and five (5) adjustable shelves.		
F0515	Cart, Lines	W	4	Closed linear supply cart. Equipped with four (4) non-marking rubber feet, casters, and waistcates and heavy duty cover. May be used for the delivery and user storage of clean linen as well as the return of soiled linen.		
F0535	Cart, Utility	W	1	Utility cart, 32-39" high x 36" wide x 24" deep, with 4 (four) heavy duty casters.		
F0600	Crendesa, Executive, Wood	W	1	Crendesa, Executive, Wood		
F0600	Workstation, Computer, Enclosed, With Lock	W	1	Computer executive workstation approximately 59" high x 26" wide x 22" deep. A fully enclosed workstation for a computer, monitor, printer and supplies. Cabinet has two lockable doors.		
F0725	Table, Occasional, Executive, Wood, 18"x18"	W	22	Executive chairside table, approximately 21" high x 26" wide x 20" deep. Used as an occasional table in an executive suite.		
F0765	Table, Conference, Wood	W	1	Executive conference table. Dimensions are approximately 30" high, 48" wide with lengths varying from 74" to 96". These tables add traditional elegance to any conference room.		
F0765	Table, Childs	EX	1	Childrens play area table		
F0765	Table, Dining	W	2	Dining table. Round 42" diameter or square 42" X 42". Used in dining facilities and can comfortably seat up to four (4) persons.		
F2000	Basket, Wastepaper, Round, Metal	W	12	Round wastepaper basket, approximately 18" high x 18" x 16" diameter. This metal unit is used to collect and temporarily store small quantities of paper refuse in patient rooms, administrative areas and nursing stations.		
F2010	Basket, Wastepaper, Step-On	W	58	Metal receptacle for soiled paper or towels. Equipped with a removable topboard with two independently operating self-closing, spring hinged doors. Used in public restrooms for the collection and temporary storage of refuse. Metal receptacle for soiled / used towels or waste. Equipped with a removable topboard with two independently operating self-closing, spring hinged doors. Used with public facilities for the collection and temporary storage of refuse.		
F2015	Basket, Wastepaper, Metal/Plastic, 2 Springing Doors	W	2	Free standing wastepaper unit. Used to display publications in office buildings, and waiting areas and heavy duty cover. May be used for the delivery and user storage of clean linen as well as the return of soiled linen.		
F2305	Rack, Magazine, F-6	W	5	Shredder shall be able to process a minimum of 25 sheets of paper per paper at a minimum rate of 20 feet per minute. The unit shall have a 16 inch slot to accept a paper. Paper shall be shredded into 14 inch strips.		
F2550	Shredder, Paper Heavy Duty	W	1	Shredder shall be able to process a minimum of 25 sheets of paper per paper at a minimum rate of 20 feet per minute. The unit shall have a 16 inch slot to accept a paper. Paper shall be shredded into 14 inch strips.		
F3050	Whiteboard, Dry Erase	W	34	Whiteboard unit, approximately 36" h x 36" w consisting of a white porcelain enamel writing surface with an attached chalk tray. Magnetic surface available. Image can be easily removed with a standard chalkboard eraser. For use with water color pens. Unit is ready to hang.		
K1552	Brewer, Coffee, Auto, Elect, 3 Burner, Front/Back	W	4	Space saving front to back automatic coffee maker. This unit includes a heating tank, connection for a cold water supply, decanter service with three burners, funnel and a water flow controller. The unit is used for semi-automatic coffee brewing in cafeterias and commercial institutions. The unit automatically shuts off the water flow when enough has passed through to fill the pot. The unit is normally prepped plumbed with a hot water faucet to be the place for making other hot drinks (like, tea, coffee, cocoa, etc.). The decorative height dimension does not include the decanter for coffee		

JSN	Nomenclature	AcqIns	Count	Description	Other Notes
K4665	Oven, Microwave, Consumer	VV	3	Counter mounted microwave oven for average duty use. The exterior cabinet can be made of heavy duty impact resistant plastic. The oven delivers instant energy for rapid heating, defrosting or prime cooking. The oven has touch pad controls, digital timer, power level selector and preprogrammed selections for commonly cooked items. This oven is commonly found in staff lounges.	
M5002	Television, HDTV, Large Screen, 40"	VC	30	Television, color, 43" Diagonal	Wall mounted
M5010	Television, HDTV, Large Screen, 60"	VC	1	A high definition (HDTV) multimedia, slim design, 60W to 65W color television. The TV will have a 16:9 wide screen aspect ratio with full HD 1080p resolution and HDMI connections. TV may be LED, Plasma or LCD. TV will include a stand.	
M1100	Resuscitator, Bag/Mask, Hand Operated 4"x 4"	VV	1	Hand operated bag mask resuscitator. Consists of face mask, non-rebreathing valve, compression bag and tidal bag. Used for resuscitation in life saving situations.	
M1801	Computer, Microprocessing, w/Flat Panel Monitor	VV	43	Computer, Microprocessing, w/Flat Panel Monitor	
M1803	Work Station, Computer, Retractable, Wall Mounted	VC	25	Work Station, Computer, Retractable, Wall Mounted	
M1810	Copier, Floor Standing, Digital	VV	1	Four station copier. Unit features automatic paper size selection, automatic document feeder and sort. The system also has zoom capabilities and automatic two-sided copying. For use where medium volume reproduction is required in the range of 30 to 40 copies per minute.	
M1840	Printer/Copier/Fax Combination	VV	7	Multifunctional printer, fax, scanner and copier (PAC) all-in-one machine.	
M2025	Rack, Storage, Cylinder, Gas	VV	1	Mobile Gas cylinder storage rack. Unit is a modular cage frame for holding various sizes of gas cylinders. Nylon or fabric securing straps can be attached to the frame bars to stabilize gas cylinders. Add additional units or specify size as required when ordering. This item is one locally fabricated.	
M2055	Shelving, Storage, Wire, CRS, w Adjustable Shelves	EV	6	Standard wire shelving unit. Unit has fully adjustable shelves constructed of stainless steel. For use in general purpose storage areas. Shelving is provided in various sizes and configurations. Price provided for 1 set for unit approximately 74" x 18" x 48" with four shelves.	
M2070	Shelving, Storage, 77x36xw18d	EV	4	Storage shelving unit approximately 77" H X 36" W X 18" D. Corrosion resistant baked enamel, galvanized or stainless steel open unit with adjustable shelves. The closed version is also available. For use in the storage room.	
M3070	Hemping, Linen, Mobile, w/Lid	EV	31	Mobile linen hamper with hard or foot operated lid. Made of heavy tubular stainless steel with heavy gauge welded steel platform. Holds 25" hamper bags. Mounted on ball bearing casters. For linen carting in hospitals and clinics.	
M3072	Frame, Infectious Waste Bag w/Lid	VV	7	Frame for infectious waste collection bags. Made of heavy tubular stainless steel with heavy gauge welded steel platform. Adjusts to hold 16" or 25" trash bags. Mounted on ball bearing casters and includes permanently mounted handle lid. Provides means for bagging infectious waste at point of waste generation.	
M3073	Container, Biohazard Waste, Step-on, Fire Safe	VV	12	A biohazard waste container with a step-on lid. The container will have a capacity of approximately 12 gallons and be made of a fire safe material.	
M3105	Cabinet, Warming, F-S, 1 Heated Compartment,Elect	VV	4	Frostless, single or double door warming cabinet with 1 compartment. Compartment and exterior walls are made of stainless steel. Thick fiberglass insulation maintains the interior temperature and prevents the exterior surface from becoming too hot. Sealed door, thermostatic temperature control, status display, heat indicating light, over temperature protection, alarms and an air circulating fan. Unit may have an optional temperature recorder. Manufacturer recommends using a fused disconnect switch in the electrical power circuit. Cabinet may also be installed in a recess. Designed for heating and storing of solutions and blankets used in patient care areas.	
M3110	Cabinet, Warming, F/S, 2 Heated Compartment, Elect	VV	2	Frostless, single or double door warming cabinet with 2 heated compartments. Compartment and exterior walls are made from stainless steel. Thick fiberglass insulation maintains the interior temperature and keeps the exterior from becoming too hot. Equipped with a sealing door, thermostatic temperature control, status display, heat indicating light, over temperature protection, alarms and an air circulating fan. Unit may have an optional temperature recorder. Manufacturer recommends using a fused disconnect switch in the electrical power circuit. Cabinet may also be installed in a recess. Designed for heating and storing solutions and blankets used in patient care areas.	
M3150	Distribution System, Medication, Automatic, 2 Cell	VV	5	An automated dispensing system that provides controlled dispensing, inventory and security. Size and cost will vary dependent on number of modules selected.	
M4255	Work Station, Computer, Retractable, Wall Mounted Stand, iV, Adjustable	VV	22	Monitor, Vitalis, Retractable, Head Wall Mounted	
M4266	Pump, Volumetric, Infusion, Multiple Line	VV	28	Adjustable IV stand with 4-hook arrangement. Stand has stainless steel construction with heavy weight base. It adjusts from 66 inches to 100 inches and is mounted on conductive rubber, ball bearing, swivel casters. Stand is used for administering intravenous solutions.	
M4266	Pump, Volumetric, Infusion, Multiple Line	VV	31	Volumetric infusion pump. Pump is self-regulating with automatic sensor and adjustable rate. Equipped with visual and audible alarms and up to 10 hour capacity battery. For the administration of a wide variety of therapeutic agents where precise control is required. Unit provides individual control to IV lines simultaneously.	
M4655	Stretcher, Mobile, CRS, 9 Position	VV	1	Mobile hydraulic. All corrosion resistant stainless steel construction. It consists of a tubular frame with side rails, a 9-position hydrolic base with pneumatic footw adjustment, and a 2" pad. Unit is mounted on 8" conductive casters. Designed for patient transport as well as for minor surgical procedures.	
M4705	Wheelchair, Patient Transport, Folding	VV	3	Folding patient transport wheelchair. Constructed of chrome plated steel with detachable armrest and footrests. Unit has heavy duty foot casters with sealed radial high precision ball bearing assembly. Unit is used for patient transport.	
M4710	Wheelchair, Patient, Bariatric, Transport, Folding	VV	1	Folding bariatric patient transport wheelchair with a capacity of at least 500 lbs. Constructed with a heavy duty steel frame and double cross brace, with detachable armrest and swing away footrests. Unit has heavy duty foot casters and rear wheels with precision wheel bearings in front and rear assembly. Unit is used for patient movement.	
M4816	Warming Unit, Patient, Automatic Manual, Air	VV	21	Automatic/manual patient warming unit. Unit delivers a flow of warmed air through a perforated plastic blanket. Used primarily for postoperative patients to speed recovery of normal body temperature.	
M7007	Bed, Patient, Electric, Special Care	VV	21	Electric patient bed for special care areas. Unit features a control panel for the patients operation, IV rod locations and a full range of positions. Includes safety sides, thermal overhead protection in the motor, provisions for chest x-rays and fluorography. Bed deck is x-ray transparent.	
M7010	Bed, Patient, Electric	VV	2	Electric patient bed. Includes safety side rails, IV rod insertion slots and patient control panel for a full range of positions. Four wheel locking brakes. Overall bed height adjustable between 16.5 and 31 inches.	
M7040	Table, Overbed	VV	25	Overbed table. Adjustable height table constructed of heavy gauge steel. Mounted on 2" diameter twin swivel casters with bumper caps. Table top is constructed with a high pressure plastic laminated surface that resists chipping, scratching, and staining. It includes a vanity tray and a mirror. Table is designed for use over bed, wheelchair or large chair.	
M7680	Defibrillator/Monitor/Recorder, Portable	VV	1	Portable defibrillator-monitor-recorder. Integral unit system operable from self-contained rechargeable batteries. ECG may be viewed through paddles or patient cable. Options include external pacing and T22-lead.	
M7905	Oximeter, Pulse	VV	1	Pulse oximeter for continuous surveillance of patient pulse and oxygen saturation rates. Instrument features LED display and visual alarms, automatic calibration and battery operation in case of power failure. Other applications include sleep studies, exercise testing and monitoring certain patients in the home (e.g. infants or patients requiring respiratory therapy).	
M8770	Aspirator/Vacuum/Pressure Unit, General Purpose	VV	1	General purpose suction/pressure apparatus. Double stainless steel console unit with a 118 HP motor, stand-mounted. Stands include 2 1/2" casters with chemical resistant top. Pumps suction capacity 22 LPM. Unit includes collection bottle, bacteria filter and suction regulating valve. Used for on/in/out, inched suctioning and other emergency purposes.	
R6200	Refrigerator, UVC or F/S, 5 Cu Ft	VV	5	Utility refrigerator approximately 35" H x 24" W x 26" D. The unit has a two tray ice cube cooling system. The refrigerator fits standard architectural dimensions for undercabinet installation. The unit is perfect for use in nurses' station, wards, and laboratories, pharmacies or wherever space is limited.	
R7250	Refrigerator/Freezer, 20 Cubic Feet	VV	4	Refrigerator/freezer unit. This type unit includes a food saver system that helps keep food fresher. It also includes roll out wheels and is equipped for an optional automatic ice maker. This unit is of commercial or residential design and use.	
UJ001	Kiosk Check-In	EX	1	Retrospect patient check-in center	
UM051	Cabinet, Medicine, Wall Mounted (2)	VC	26	Provides (2) Wall-mounted lockable cabinet for patient medicine storage. Verify local regulations of existing with owner.	
UM050	Tele Monitor	VV	10	Tele Monitor, Wall Mounted	
UM051	Tele Monitor CPU	VV	7	Computer Workstation for Tele Monitor system. Wall mounted behind Tele Monitor. Include speaker and camera in ceiling.	

EQUIPMENT SCHEDULE - CONTRACTOR FURNISHED					
JSN	Nomenclature	Acq/Ins	Count	Description	Other Notes
A1014	Telephone, Wall Mounted, 1 Line, With Speaker	CC	2	Telephone, Wall Mounted, 1 Line, With Speaker	
A1030	Locker, 2 Person, Over-Under	CC	20	Two person locker, double tier, 72in (20in) ID. This unit includes hooks for coats and hats. Door equipped with safety guard handles. Designed for storage of coats, hats, and other personal belongings. Other width and depths are available.	Manual provide base and sloped top.
A1066	Mirror, Float Glass, With SS Frame	CC	3	A high quality 1/4" polished float glass mirror 36X18, framed in a one-piece, bright polished, stainless steel channel frame with 90° interlock corners. All edges of the mirror are protected by abrasion free filler strips. Mirror has a galvanized steel back with integral horizontal hanging brackets and wall hanger for concealed mounting. For mounting above single wall-mounted lavatories located in toilet stalls. Doctor's examination offices, etc. May also be used above double lavatories, either wall or counter/mounted, found in restroom areas.	
A1080	Mirror, Posture, Wall Mounted	CC	3	24" X 36" Wall mounted posture mirror. Consists of a 1/4" tempered glass in a sturdy corrosion resistant frame with water proof back. For educational and therapy programs.	
A1090	Mirror, Float Glass, With SS Frame & Shelf	CC	25	A high quality 1/4" polished float glass mirror, approximately 36" H X 18" W framed in a one-piece, bright polished, stainless steel channel frame with 90° interlock corners and an integral stainless steel, satin finish, shelf. All edges of the mirror are protected by abrasion filler strips. Mirror has a galvanized steel back with integral horizontal hanging brackets and wall hanger for concealed mounting. For mounting above single wall mounted lavatories located in restroom areas, Doctor examination areas, offices, etc. May also be used above double lavatories, either wall or counter/mounted.	
A1110	Headwall, Prefabricated, General, On-wall double unit	CC	25	On-wall double vertical unit prefabricated headwall. Unit consists of a patient service module for general care, single bed type. It contains lighting, medical gases, electrical outlets, nurse call and intercommed bed locator. Basis of design is Witlock-Blaiss system.	
A1200	Lift System, Overhead, Patient Room	CC	23	An overhead rail system specifically designed for patient lifting and movement for a single bed patient room. The system will consist of recessed or ceiling mounted primary and secondary rails, lift motor with rolling carriage, patient harness or seat, and a hand controller or control box with charger. System will facilitate lifting and movement of patient to and from bed to gurney, chair or other requirement. Minimum lift capability is 550 pounds. Custom design of track layout by manufacturer is essential to meet individual facility requirements.	Recessed or ceiling mounted primary and secondary rails
A1200A	Patient Lift Charging Station	CC	24	This is a part of the Patient Lift system. Show separate for coordination only.	
A1200B	Lift System, Bariatric, Overhead, Patient Room	CC	2	An overhead rail system specifically designed for patient lifting and movement for a single bed patient room. The system will consist of recessed or ceiling mounted primary and secondary rails, lift motor with rolling carriage, patient harness or seat, and a hand controller or control box with charger. System will facilitate lifting and movement of patient to and from bed to gurney, chair or other requirement. Minimum lift capability is 1000 pounds. Custom design of track layout by manufacturer is essential to meet individual facility requirements.	Recessed or ceiling mounted primary and secondary rails
A1205	Lift System, Overhead, Patient Room to Bath	CC	4	An overhead rail system specifically designed for patient lifting and movement for a single bed patient room. The system will consist of recessed or ceiling mounted primary and secondary rails, lift motor with rolling carriage, patient harness or seat, and a hand controller or control box with charger. System will facilitate lifting and movement of patient to and from bed to gurney, chair or other requirement. Minimum lift capability is 550 pounds. Custom design of track layout by manufacturer is essential to meet individual facility requirements.	
A5109-18	Grab Bar - 18", 1-1/4" Dia., SS	CC	2	A 1-1/4" diameter, satin finish stainless steel, peened gripping surface, 2 wall toilet stall/ room, grab bar with concealed mounting flanges. Snap over flanges are provided to conceal mounting screws. A selection of mounting kits and concealed anchor devices are available from the manufacturers for different types of installations. Grab bar shall comply with barrier-free accessibility guidelines for structural strength. For typical water closet applications in toilet stalls and rooms where ADA (American's With Disabilities Act) requirements must be met.	
A5109-36	Grab Bar - 36", 1-1/4" Dia., SS	CC	1	A 1-1/4" diameter, satin finish stainless steel, peened gripping surface, 2 wall toilet stall/ room, grab bar with concealed mounting flanges. Snap over flanges are provided to conceal mounting screws. A selection of mounting kits and concealed anchor devices are available from the manufacturers for different types of installations. Grab bar shall comply with barrier-free accessibility guidelines for structural strength. For typical water closet applications in toilet stalls and rooms where ADA (American's With Disabilities Act) requirements must be met.	
A5109-42	Grab Bar - 42", 1-1/4" Dia., SS	CC	2	A 1-1/4" diameter, satin finish stainless steel, peened gripping surface, 2 wall toilet stall/ room, grab bar with concealed mounting flanges. Snap over flanges are provided to conceal mounting screws. A selection of mounting kits and concealed anchor devices are available from the manufacturers for different types of installations. Grab bar shall comply with barrier-free accessibility guidelines for structural strength. For typical water closet applications in toilet stalls and rooms where ADA (American's With Disabilities Act) requirements must be met.	
A5109-DB	Double fold down grab bar w Toilet Tissue Roll	CC	25	Double fold down grab bar w Toilet Tissue Roll	
A5110-18	Grab Bar - 18", 1-1/4" Dia., SS, Shower Use	CC	50	A 1-1/4" diameter, satin finish stainless steel, peened gripping surface, shower grab bar with concealed mounting flanges. Snap over flanges are provided to conceal mounting screws. A selection of mounting kits and concealed anchor devices are available from the manufacturers for different types of installations. Grab bar shall comply with barrier-free accessibility guidelines for structural strength. For typical applications in shower stalls where ADA (American's With Disabilities Act) requirements must be met.	
A5110-24	Grab Bar - 24", 1-1/4" Dia., SS, Shower Use	CC	2	A 1-1/4" diameter, satin finish stainless steel, peened gripping surface, shower grab bar with concealed mounting flanges. Snap over flanges are provided to conceal mounting screws. A selection of mounting kits and concealed anchor devices are available from the manufacturers for different types of installations. Grab bar shall comply with barrier-free accessibility guidelines for structural strength. For typical applications in shower stalls where ADA (American's With Disabilities Act) requirements must be met.	
A5110-30	Grab Bar - 30", 1-1/4" Dia., SS, Shower Use	CC	5	A 1-1/4" diameter, satin finish stainless steel, peened gripping surface, shower grab bar with concealed mounting flanges. Snap over flanges are provided to conceal mounting screws. A selection of mounting kits and concealed anchor devices are available from the manufacturers for different types of installations. Grab bar shall comply with barrier-free accessibility guidelines for structural strength. For typical applications in shower stalls where ADA (American's With Disabilities Act) requirements must be met.	
A5110-36	Grab Bar - 36", 1-1/4" Dia., SS, Shower Use	CC	46	A 1-1/4" diameter, satin finish stainless steel, peened gripping surface, shower grab bar with concealed mounting flanges. Snap over flanges are provided to conceal mounting screws. A selection of mounting kits and concealed anchor devices are available from the manufacturers for different types of installations. Grab bar shall comply with barrier-free accessibility guidelines for structural strength. For typical applications in shower stalls where ADA (American's With Disabilities Act) requirements must be met.	
A5135	Shelf, Utility W/Map/Broom/Room Hooks, SS, Surf Mntd	CC	1	Utility Shelf w/3 Hooks 4 Holders & 1 Drying Rod - 36" W	
A5145	Hook, Garment, Double, SS, Surface Mounted	CC	30	A surface mounted, satin finish stainless steel, double garment hook. Equipped with a concealed mounting bracket that is secured to a concealed wall plate. For general purpose use throughout the facility to hang various items of apparel.	
A5165	Shelf, 5in Depth, SS, Surface Mounted	CC	2	A surface mounted, satin finish stainless steel, shelf with a maximum depth of 5". Mounting brackets are welded to shelf. Shelf is available in various widths. For general purpose use in scrub areas/rooms or other areas of the facility where a SS shelf is required. Pricing based upon a 48" width.	
A5171	Rod, Shower Curtain, 1"Diameter, W/Curtain & Hooks	CC	26	A concealed, mounted, 1" outside diameter, satin finish stainless steel, shower curtain rod with white vinyl shower curtain (72" H) and SS shower curtain hooks. Rod and curtain available in various widths. For general purpose use of shower stall or bathtub	
A5175	Soap Dish, With Bar, SS, Recessed	CC	26	Soap Dish With Bar SS, Recessed	
A5180	Track, Cubicle, Surface Mounted, With Curtain	CC	127	Surface mounted cubicle track, with curtain. Track constructed of thick extruded aluminum. Equipped with self lubricating carriages, beaded drop chain hooks, and frame resistant curtain. To include removable ends and caps. Designed to be suspended around patient areas where privacy is needed. Price listed is a per foot of the track, curtains to be priced per code.	
A5205	Bar, Towel, 1" Diameter, SS, Surface Mounted	CC	26	A surface mounted, satin finish stainless steel, 1" diameter, towel bar. Support posts and flanges are one piece, chrome-plated, cast heavy brass with satin finish. Towel bar shall not extend within support posts. Available in 18", 24" and 30" widths. For general purpose use in shower or bathtub rooms. Pricing based upon a suggested standard width of 18".	
F3000	Clock, 12" Diameter, Synchronized	CC	31	Clock, 12" diameter. Round surface, easy to read numbers with sweep second hand. Wall mounted unit for use when impractical to install a fully synchronized clock system. Battery operated, (batteries not included).	
M435	Light, Overhead, Direct and Indirect	CC	24	Light, Overhead, Direct and Indirect	Wall Mount
R4650	Ice Maker, Flaked, With Dispenser	CC	2	Ice maker dispenser approximately 71" H x 19D x 24W. This unit provides flaked ice and cooled water automatically. The unit has a daily capacity up to 600 pounds and a 100 pound capacity stainless steel storage compartment with water station. It is a freestanding, automatic load ice dispenser for food service and healthcare use. The unit is used in healthcare institutions and various commercial food service operations for dispensing ice.	Floor Drain
EQUIPMENT LEGEND					

EQUIPMENT LEGEND

<u>JSN</u>	<u>CATEGORY</u>
A	ARCHITECTURE
C	FIXED CASEWORK
E	MODULAR CASEWORK
F	FURNITURE AND FURNISHINGS
G	PHYSICAL SERVICE / GYM
K	FOOD SERVICE EQUIPMENT
M	MISCELLANEOUS
P	PLUMBING FIXTURES
R	REFRIGERATION
T	SHOP EQUIPMENT / TOOLS
U	USER SPECIFIC ITEMS

ACQUISITION CODE LEGEND: (Acq/Ins)

CC - CONTRACTOR FURNISHED AND INSTALLED
VC - GOVERNMENT FURNISHED, CONTRACTOR INSTALLED
VV - GOVERNMENT FURNISHED AND INSTALLED
D - EQUIPMENT LEASED BY GOVERNMENT, INSTALLED BY LESSOR
EX - EXISTING EQUIPMENT RELOCATED

[illegible]

CONSULTANTS

<p>STRUCTURAL:</p>  <p>Albertson Engineering Inc.</p> <p>Albertson Engineering, Inc. 3202 W. Main St., #C Rapid City, South Dakota 57702 Phone: 605-343-9606</p>	<p>MECHANICAL / ELECTRICAL / PLUMBING:</p>  <p>West Plains Engineering, Inc. 1750 Rand Road Rapid City, South Dakota 57702 Phone: 605-348-7455</p>
---	---

ARCHITECT OF RECORD

A/E:
STONE GROUP ARCHITECTS, INC
600 EAST 7TH ST
SIOUX FALLS, SD 57104
605.271.1144
TODD STONE, AIA



STAMM



Office of
Construction
and Facilities
Management

U.S. Department
of Veterans Affairs

Drawing Title EQUIPMENT SCHEDULE	Phase CONSTRUCTION DOCUMENTS	Project Title RENOVATE AND CONSOLIDATE INPATIENT FUNCTIONS			Project Number VA #568-14-110 SGA #1677
Approved:	FULLY SPRINKLERED	Location FORT MEADE, SOUTH DAKOTA			Building Number 113
		Issue Date 06/10/2022	Checked TS	Drawn JN/JH	Drawing Number AE400

GENERAL NOTES - ENLARGED

- PROVIDE BLOCKING AT PARTITIONS AS REQUIRED FOR MOUNTING OF FURNISHED AND NON-FURNISHED WALL MOUNTED ITEMS.
- INTERIOR DOOR FRAMES TO BE FRAMED 4" FROM ADJACENT WALL TO HINGE, UNLESS NOTED OTHERWISE.
- ALL INTERIOR WALL DIMENSIONS ARE TO FACE OF GYPSUM BOARD, CMU, BRICK, OR CONCRETE, UNLESS NOTED OTHERWISE.
- ALL PARTITIONS ARE TO BE TYPE "A30" UNLESS NOTED OTHERWISE.
- PROVIDE COUNTERTOP SUPPORTS AT ALL OPEN SPACES. BRACKETS TO BE PAINTED TO MATCH SPECIFIED WALL FINISH.
- PROVIDE FINISHED END PANELS AT ALL EXPOSED MILLWORK SURFACES. ALL PLAM CABINETS TO HAVE PVC EDGES. MATCH PVC EDGE TO PLAM.
- PROVIDE FILLER PANELS & SCRIBE STRIPS WHERE NEEDED FOR COMPLETE INSTALLATION.
- CABINETS OVER 30" WIDE SHALL HAVE 1" THICK PARTICLE BOARD CORE.
- DO NOT PROVIDE ENDSPLASH UNLESS OTHERWISE NOTED.
- VERIFY ALL GROMMET LOCATIONS AND COUNT WITH OWNER.
- ALL WALL CABINETS AND TALL CABINETS WILL HAVE SLOPED TOPS UNLESS NOTED OTHERWISE.
- COORDINATE GROMMET LOCATION WITH OWNER. CABINET DEPTH (NOT INCLUDING DOORS) U.N.O. = 14" = 24" = 34"
- FOR ALL GOVERNMENT PROVIDED ROOM FURNISHINGS, PLANS/LIST TO BE REVIEWED WITH STAFF AND REFINED WITH DESIGNER FOR ADEQUATE STAFF/PATIENT NEEDS.

SHEET KEYNOTES

- EXISTING CONCRETE COLUMN.
- ON A5505.
- ACCESS PANEL.
- HOLLOW METAL TO CEILING 2" WIDE OPENING TO ALLOW PATIENT TRACK.
- HOLLOW METAL W/O WINDOW SYSTEM.
- VISION CONTROL GLASS IN FRAME WITH LOUVERS BETWEEN GLASS.
- PATIENT LIFT TRACK. SEE DETAIL F3AE504.
- SYSTEMS FURNITURE BY OTHERS.
- WINDOW TREATMENT.
- WATER CLOSET. REF. PLUMBING.
- WALL HUNG LAV. REF. PLUMBING.
- SHOWER - REF. PLUMBING.
- MED GAS ALARM PANELS. REF. PLUMBING.
- LIGHT FIXTURE - REF. ELEC.
- NURSE CALL PULL STATION. REF. ELEC.

ENLARGED PLAN / ELEV LEGEND

- PARTITION TYPES - SEE SHEET A502
- EQUIPMENT - SEE SHEETS A5400 AND A501
- WALL RATINGS - SEE SHEET G101
- GOVERNMENT FURNISHED AND INSTALLED OR EXISTING EQUIPMENT RELOCATED. REF. EQUIPMENT SCHEDULES ON A5400.

M/E OUTLET ABBREVIATIONS

- | | | | |
|----|-----------------------------|----|-------------|
| CB | CODE BLUE | A | MEDICAL AIR |
| DO | DATA OUTLET | OV | OXYGEN |
| EO | ELECTRICAL OUTLET | BL | BLEND |
| EO | EMERGENCY ELECTRICAL OUTLET | V | VACUUM |
| NC | NURSE CALL | | |

CABINET KEY (SEE DETAILS ON A504)

- INDICATES UNIT TYPE → WC → INDICATES UNIT WIDTH
INDICATES UNIT DEPTH (OTHER THAN STANDARD) → 1'-6" →

WALL CABINETS

- | | | | |
|---|---|--|----------------------------|
| | | | |
| WALL CABINET W/ HINGED DOORS AND ADJUSTABLE SHELF | WALL CABINET W/ HINGED DOORS AND ADJUSTABLE SHELF | BLIND CORNER WALL CABINET W/ HINGED DOORS AND ADJUSTABLE SHELF | WALL CABINET W/ OPEN SHELF |
| | | | |
| MICROWAVE CABINET W/ HINGED DOORS | WALL CABINET W/ CURTAIN AND ADJUSTABLE SHELF | | |

BASE CABINETS (SEE DETAILS ON A505)

- | | | | |
|---|---|--|--------------------------------------|
| | | | |
| BASE CABINET W/ HINGED DOORS AND ADJUSTABLE SHELF | BASE CABINET W/ DRAWER AND HINGED DOORS | BLIND CORNER BASE CABINET W/ HINGED DOORS AND ADJUSTABLE SHELF | BASE CABINET W/ LATERAL FILE DRAWERS |
| | | | |
| BASE CABINET W/ HINGED DOORS AND ADJUSTABLE SHELF | BASE CABINET W/ HINGED DOORS AND ADJUSTABLE SHELF | BASE CABINET W/ HINGED DOORS AND ADJUSTABLE SHELF | |

MISC.

- FULL DEPTH PLAM SUPPORT PANELS
COUNTERTOP TO WALL
- SP CB

